

GENERAL INDEX

FOR DETAILED INDEX OF PLANS SEE SHEET NO. 2

DESCRIPTION	NUMBER OF SHEETS
TITLE SHEET	1
DETAILED INDEX	4
GENERAL NOTES	1
TYPICAL SECTIONS	17
QUANTITIES	27
PLAN AND PROFILES	66
SPECIAL DESIGN - ROADWAY ITEMS	207
BRIDGE DRAWINGS	25
SPECIAL DESIGN - BRIDGES	26
CROSS-SECTIONS	220
<b>TOTAL SHEETS</b>	<b>594</b>

BRIDGE STRUCTURES REQ'D.

① 01-02-07

U.S. 84 OVER HOOKER HOLLOW CREEK  
 STA. 2+881.502 @ RT. LANE (IN PLACE)  
 SPANS: 1 @ 17.752, 1 @ 18, 1 @ 17.752  
 SKEW=30° LT. FWD.  
 54.796 ALONG @ SURVEY (RT. LANE)

U.S. 84 OVER DRY CREEK  
 STA. 5+890.255 @ LT. LANE REQ'D  
 STA. 5+891.755 @ RT. LANE (IN PLACE)  
 SPANS: 1 @ 11.820, 1 @ 12, 1 @ 11.820  
 SKEW=0°  
 36.490 ALONG @ SURVEY (RT. LANE)

U.S. 84 OVER M.S. 13  
 STA. 13+519.400 @ CONSTRUCTION (RT. LANE) (IN PLACE)  
 STA. 13+523.586 @ CONSTRUCTION (LT. LANE) (IN PLACE)  
 SPANS: 1 @ 17.282, 1 @ 38.500, 1 @ 16.032  
 SKEW=8°52'35" LT. FWD.  
 72.948 ALONG @ (RT. OR LT. LANE)

U.S. 84 OVER WHITE SAND CREEK  
 STA. 14+112.255 @ CONSTRUCTION RT & LT LANES (IN PLACE)  
 SPANS: 1 @ 11.820, 4 @ 12,  
 1 @ 30.6 @ 12, 1 @ 11.820  
 SKEW=0°  
 174.490 ALONG @ CONSTRUCTION

BOX BRIDGES REQ'D.

ACCESS CONTROL

NOTES:

- ACCESS TO AND EXIT FROM THIS HIGHWAY WILL BE PERMITTED ONLY THROUGH INTERCHANGE OR SUCH OTHER POINTS AS MAY BE ESTABLISHED BY PUBLIC AUTHORITY AND AS SHOWN ON THE PLANS.
- THIS NOTE APPLIES TO THE FOLLOWING STATION LIMITS:  
 STA. 8+150 TO STA. 12+245  
 THIS PROJECT IS DECLARED BY THE TRANSPORTATION COMMISSION TO BE A TYPE 2B CONTROLLED ACCESS FACILITY WITHIN THE MEANING OF CHAPTER 313, MISSISSIPPI LAWS OF 1956, AND IS SUBJECT TO ALL RESTRICTIONS AS SHOWN BY ORDER OF SAID COMMISSION DATED 10th DAY OF AUGUST, 1999 IN MINUTE BOOK 7 AT PAGE 2039 & 2040 AND AUTHORIZED UNDER SECTION 65-1-10(1) MCA (1972 AS AMENDED).
- THIS NOTE APPLIES TO THE FOLLOWING STATION LIMITS:  
 STA. 12+245 TO STA. 14+750  
 THIS PROJECT IS DECLARED BY THE TRANSPORTATION COMMISSION TO BE A TYPE 1 CONTROLLED ACCESS FACILITY WITHIN THE MEANING OF CHAPTER 313, MISSISSIPPI LAWS OF 1956, AND IS SUBJECT TO ALL RESTRICTIONS AS SHOWN BY ORDER OF SAID COMMISSION DATED 10th DAY OF AUGUST, 1999 IN MINUTE BOOK 7 AT PAGE 2039 & 2040 AND AUTHORIZED UNDER SECTION 65-1-10(1) MCA (1972 AS AMENDED).

STATE OF MISSISSIPPI

MISSISSIPPI DEPARTMENT OF TRANSPORTATION

# PLAN AND PROFILE OF PROPOSED STATE HIGHWAY

## FEDERAL AID PROJECT NO. NH-0015-02(085) PH2 N

US 84 FROM LAWRENCE COUNTY LINE TO  
 EAST OF PRENTISS

F.M.S. NO: 102062/302000 (JEFFERSON DAVIS)  
 F.M.S. NO: 102062/303000 (LAWRENCE)

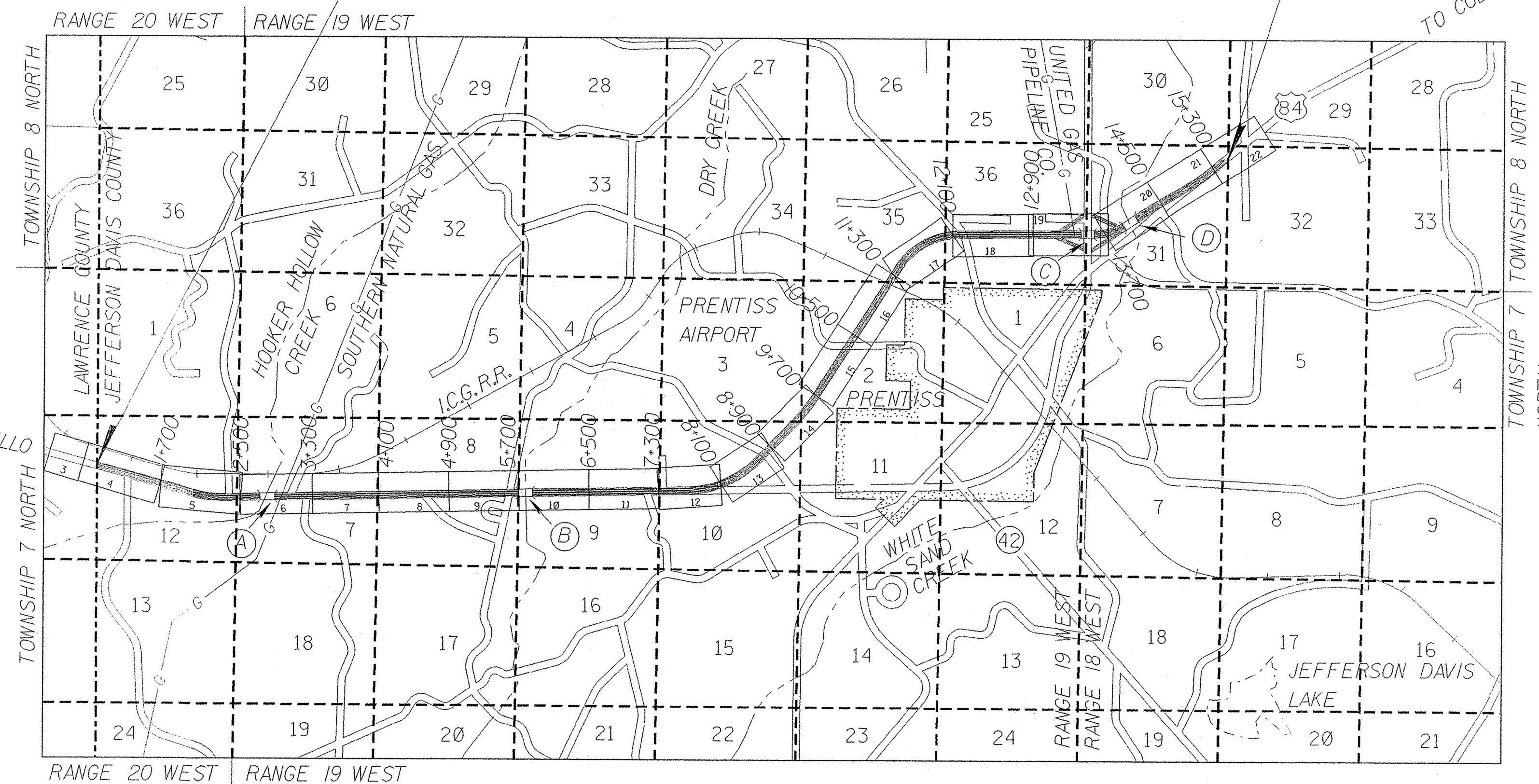
BEGINNING OF PROJECT  
 STA. 0+986.082

JEFFERSON DAVIS & LAWRENCE COUNTIES

END OF PROJECT  
 STA. 15+400.000

**RATIOS / SCALES**

PLAN	HOR.	1:1000
PROFILE	VERT.	1:100
LAYOUT		1:40 000



EQUATIONS

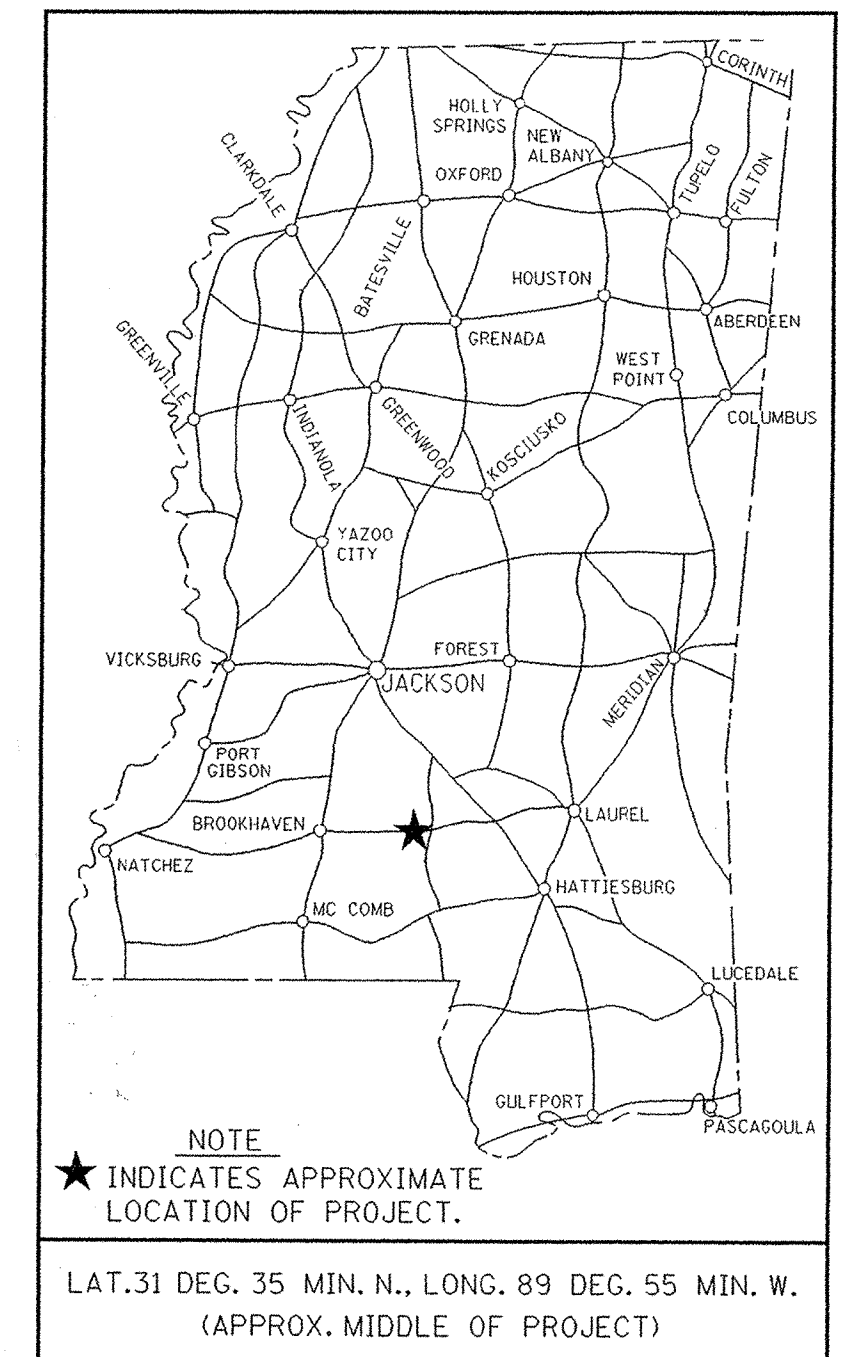
EXCEPTIONS

LENGTH DATA

LENGTH OF ROADWAY	14 075.194 m	14.075 km
LENGTH OF BRIDGES	338.724 m	0.339 km
LENGTH OF PROJECT (NET)	14 413.918 m	14.414 km
LENGTH OF EXCEPTIONS	0.000 m	0.000 km
LENGTH OF PROJECT (GROSS)	14 413.918 m	14.414 km



FED. ROAD REG. NO.	STATE	PROJECT NO.	SHEET NO.
4	MISS.	NH-0015-02(085) PH2	1



**DESIGN CONTROL**

100 km/h = V (SPEED DESIGN)

ADT (2007) = 4800 : ADT (2027) = 5800  
 DHV = 640 : D = 60% TDHV = 36%

**PERMITS ACQUIRED BY MDOT**

WETLANDS AND WATERS PERMITS (NECESSARY FOR ULTIMATE IMPROVEMENTS ONLY):

	WATERS	WETLANDS
NATIONWIDE #14	<input checked="" type="checkbox"/>	<input type="checkbox"/>
NATIONWIDE (OTHER)*	<input type="checkbox"/>	<input type="checkbox"/>
GENERAL*	<input type="checkbox"/>	<input checked="" type="checkbox"/>
INDIVIDUAL (404)*	<input type="checkbox"/>	<input type="checkbox"/>

\* ACQUISITION OF PERMITS FOR TEMPORARY IMPACTS DURING CONSTRUCTION ARE THE RESPONSIBILITY OF THE CONTRACTOR

STORMWATER PERMIT

Y REQUIRED CMO SUBMITTED BY MDOT (DISTRIBUTED AREA = 5 ACRES + INTB 840M)  
 S REQUIRED SCMO TO BE SUBMITTED BY CONTRACTOR (1 TO 4.9 ACRES/INTB 830M)  
 N NO STORMWATER PERMIT REQUIRED (<1 ACRE)

APPROVED BY: CKP DATE: 1/2/07

CONVENTIONAL SYMBOLS

- COUNTY LINE
- TOWN CORPORATION LINE
- SECTION LINE
- ROAD OR TRAVELED WAY
- RAILROAD
- SURVEY LINE
- BRIDGES

APPROVED: *Larry Lee James* 1-02-07  
 CHIEF ENGINEER DATE

APPROVED: *Tommy L. Brown* 1-02-07  
 EXECUTIVE DIRECTOR DATE

MISSISSIPPI DEPARTMENT OF TRANSPORTATION

APPROVED: \_\_\_\_\_ DATE \_\_\_\_\_  
 DIVISION ADMINISTRATOR

FEDERAL HIGHWAY ADMINISTRATION  
 DEPARTMENT OF TRANSPORTATION



DESCRIPTION OF SHEET

WKG. SH.  
NO. NO.

DESCRIPTION OF SHEET

WKG. SH.  
NO. NO.

TITLE SHEET (1)

DETAILED INDEX SHEETS (5)

- DETAILED INDEX
DETAILED INDEX
DETAILED INDEX
DETAILED INDEX (BRIDGE)
GENERAL NOTES

- DI-1 2
DI-2 3
DI-3 4
DI-5 5
GN-1 6

TYPICAL SECTION SHEETS (17)

- TYPICAL SECTION (RECONSTRUCTION)
TYPICAL SECTION (3R CONSTRUCTION)
TYPICAL SECTION (NEW CONSTRUCTION)
TYPICAL SECTION (REMOVAL AND USE OF HIGH VOLUME CHANGE SOIL)
TYPICAL SECTION (REMOVAL AND USE OF HIGH VOLUME CHANGE SOIL)
TYPICAL SECTION (RAMPS)
TYPICAL SECTION (OVERLAY SECTIONS)
TYPICAL SECTION (TEMPORARY CONNECTIONS)
TYPICAL SECTION (LOCAL ROADS - NEW CONSTRUCTION)
TYPICAL SECTION (LOCAL ROADS - NEW CONSTRUCTION)
TYPICAL SECTION (US 84 CONNECTOR)
TYPICAL SECTION (MS-13)
TYPICAL SECTION (LOCAL ROADS - CHANNELIZED INTERSECTIONS & OVERLAY SECTIONS)
TYPICAL SECTION (GUARDRAIL & BRIDGE END PAVEMENT)
TYPICAL SECTION (CROSSOVER & CONC. ISLAND DETAILS)
TYPICAL SECTION (DRIVEWAYS & RAMPS)
TYPICAL SECTION (MS-13 CONSTRUCTION PHASING)

- TS-1 7
TS-2 8
TS-3 9
TS-4 10
TS-5 11
TS-6 12
TS-7 13
TS-8 14
TS-9 15
TS-10 16
TS-11 17
TS-12 18
TS-13 19
TS-14 20
TS-15 21
TS-16 22
TS-17 23

QUANTITY SHEETS (27)

- SUMMARY OF QUANTITIES (ROADWAY)
SUMMARY OF QUANTITIES (ROADWAY)
SUMMARY OF QUANTITIES (ROADWAY)
SUMMARY OF QUANTITIES (ROADWAY)
SUMMARY OF QUANTITIES (BRIDGE)
SUMMARY OF CULVERT HYDRAULIC DESIGN
SUMMARY OF REMOVAL ITEMS
SUMMARY OF REMOVAL ITEMS
SUMMARY OF DRAINAGE STRUCTURES
SUMMARY OF TRAFFIC CONTROL ITEMS
ESTIMATED QUANTITIES (EARTHWORK)
ESTIMATED QUANTITIES (DRIVEWAYS & RAMPS)
ESTIMATED QUANTITIES (DRIVEWAYS & RAMPS)
ESTIMATED QUANTITIES (SIDEDRAINS)
ESTIMATED QUANTITIES (GUARDRAIL & BRIDGE END PAVEMENT)
ESTIMATED QUANTITIES (EROSION CONTROL)
ESTIMATED QUANTITIES FOR TRAFFIC CONTROL SIGNS
ESTIMATED QUANTITIES FOR PAVEMENT MARKINGS
ESTIMATED QUANTITIES (BOX CULVERT)
ESTIMATED QUANTITIES (BRIDGE)
BOX CULVERT BENDING DETAIL
VERTICAL BOX CULVERT BENDING DETAIL
STANDARD ROADSIDE SIGN QUANTITIES
STANDARD ROADSIDE SIGN QUANTITIES
STANDARD ROADSIDE SIGN QUANTITIES
STANDARD ROADSIDE SIGN QUANTITIES
DIRECTIONAL SIGN QUANTITIES

- SQ-1 24
SQ-2 25
SQ-3 26
SQ-4 27
SQ-5 28
SCHD-1 29
SRI-1 30
SRI-2 31
SDS-1 32
STCI-1 33
EQ-1 34
EQ-2 35
EQ-3 36
EQ-4 37
EQ-5 38
EQ-6 39
EQ-7 40
EQ-8 41
EQ-9 42
EQ-10 43
BCB-1 44
VBCB-1 45
SRS-1A 46
SRS-1B 47
SRS-1C 48
SRS-2 49
DSQ-1 50

PLAN AND PROFILE SHEETS (66)

- STA. 45+900 TO STA. 46+255.135
STA. 45+900 TO STA. 46+255.135
STA. 0+000.00 TO STA. 0+482.212 (EXISTING TEMP. CONN.)
STA. 0+000.00 TO STA. 0+414.471 (TEMP. CONN.)
B.O.P. TO STA. 1+700
B.O.P. TO STA. 1+700
LOCAL ROAD @ 1+346.617 STA. 9+961.848 TO STA. 10+200
STA. 1+700 TO STA. 2+500
STA. 1+700 TO STA. 2+500
STA. 2+500 TO STA. 3+300
STA. 2+500 TO STA. 3+300
LOCAL ROAD @ 2+553.764 STA. 10+000.00 TO STA. 10+055.000
LOCAL ROAD @ 3+072.550 STA. 9+961.900 TO STA. 10+056.239
STA. 3+300 TO STA. 4+100
STA. 3+300 TO STA. 4+100
LOCAL ROAD @ 3+408.000 STA. 10+000.000 TO STA. 10+080.000

- 3 RT. 51
3 LT. 52
3A 53
3B 54
4 RT. 55
4 LT. 56
4A 57
5 RT. 58
5 LT. 59
6 RT. 60
6 LT. 61
6A 62
6B 63
7 RT. 64
7 LT. 65
7A 66

- LOCAL ROAD @ 3+405.993 STA. 10+000.000 TO STA. 10+400.000
STA. 4+100 TO STA. 4+900
STA. 4+100 TO STA. 4+900
LOCAL ROAD @ 4+668.585 STA. 9+956.006 TO STA. 10+150
STA. 4+900 TO STA. 5+700
STA. 4+900 TO STA. 5+700
LOCAL ROAD @ 5+056.598 STA. 10+000.000 TO STA. 10+150
LOCAL ROAD @ 5+688.000 STA. 9+961.049 TO STA. 10+140
STA. 5+700 TO STA. 6+500
STA. 5+700 TO STA. 6+500
STA. 6+500 TO STA. 7+300
STA. 6+500 TO STA. 7+300
LOCAL ROAD @ 7+250 STA. 9+961.900 TO STA. 10+150
STA. 7+300 TO STA. 8+100
STA. 7+300 TO STA. 8+100
LOCAL ROAD @ 7+493.392 STA. 10+000.000 TO STA. 10+125
STA. 0+000.00 TO STA. 0+552.701 (TEMP. CONN.)
STA. 0+000.00 TO STA. 0+379.006 (TEMP. CONN.)
STA. 0+000.00 TO STA. 0+419.581 (TEMP. CONN.)
STA. 8+100 TO STA. 8+900
STA. 8+100 TO STA. 8+900
LOCAL ROAD @ 8+250.000 STA. 10+000.000 TO STA. 10+225
LOCAL ROAD @ 8+711.497 STA. 9+630.000 TO STA. 10+200
STA. 0+000 TO STA. 0+291.996 (DETOUR 7)
STA. 0+000 TO STA. 0+291.597 (DETOUR 8)
STA. 8+900 TO STA. 9+700
STA. 9+700 TO STA. 10+500
LOCAL ROAD @ 10+425.000 STA. 9+560.250 TO STA. 10+275
STA. 10+500 TO STA. 11+300
STA. 11+300 TO STA. 12+100
STA. 12+100 TO STA. 12+900
LOCAL ROAD @ 12+245.000 STA. 9+700.000 TO STA. 10+275.000
LOCAL ROAD @ 12+245.000 STA. 9+325.000 TO STA. 9+700.000
STA. 15+000 TO STA. 15+298.896 (TEMP. CONN.)
STA. 12+900 TO STA. 13+700
DETAIL OF INTERCHANGE U.S. 84 & M.S. 13
N.W. RAMP STA. 10+330.066 TO STA. 10+959.695
S.W. RAMP STA. 10+137.392 TO STA. 10+652.432
LOCAL ROAD @ 13+558.592 STA. 19+545 TO STA. 20+100
LOCAL ROAD @ 13+558.592 STA. 20+100 TO STA. 20+446.950
STA. 13+700 TO STA. 14+500
N.E. RAMP STA. 10+959.695 TO STA. 11+404.005
S.E. RAMP STA. 10+652.432 TO STA. 11+256.119
STA. 0+000.00 TO STA. 0+610 (TEMP. CONN.)
STA. 0+000.00 TO STA. 0+243.557 (TEMP. CONN.)
STA. 14+500 TO STA. 15+300
STA. 14+500 TO STA. 15+300
STA. 0+000.00 TO STA. 0+428.213 (TEMP. CONN.)
STA. 15+300 TO E.O.P.
STA. 15+300 TO E.O.P.

- 7B 67
8 RT. 68
8 LT. 69
8A 70
9 RT. 71
9 LT. 72
9A 73
9B 74
10 RT. 75
10 LT. 76
11 RT. 77
11 LT. 78
11A 79
12 RT. 80
12 LT. 81
12A 82
12B 83
12C 84
12D 85
13 86
13A 87
13B 88
13C 89
13D 90
13E 91
14 92
15 93
15A 94
16 95
17 96
18 97
18A 98
18B 99
18C 100
19 100.01
19A 100.02
19B 100.03
19C 100.04
19D 100.05
19E 100.06
20 100.07
20A 100.08
20B 100.09
20C 100.10
20D 100.11
21 RT. 100.12
21 LT. 100.13
21 A 100.14
22 RT. 100.15
22 LT. 100.16

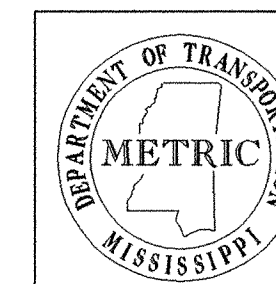
SPECIAL DESIGN - ROADWAY ITEMS (51)

- INTERSECTION DETAIL @ STA. 1+346.617
INTERSECTION DETAIL @ STA. 2+553.764
INTERSECTION DETAIL @ STA. 3+072.550
INTERSECTION DETAIL @ STA. 3+408.000
INTERSECTION DETAIL @ STA. 4+668.585
INTERSECTION DETAIL @ STA. 5+056.598
INTERSECTION DETAIL @ STA. 5+688.000

- ID-1 100.17
ID-2 100.18
ID-3 100.19
ID-4 100.20
ID-5 100.21
ID-6 100.22
ID-7 100.23

Table with columns: DATE, SHEET NO., BY. Includes revision history for PS & E PLANS-DATE 01/22/07 and FMS CON. # 102062/302000.

MISSISSIPPI DEPARTMENT OF TRANSPORTATION
DETAILED INDEX
PROJECT NO. NH-0015-02(085) PH2
COUNTY: JEFFERSON DAVIS
FILENAME: DI.DGN
DESIGN TEAM: VOLKERT CHECKED: DATE



ROADWAY DESIGN MISSISSIPPI DEPARTMENT OF TRANSPORTATION METRIC PLAN SHEET

07/30/03







ROADWAY DESIGN  
MISSISSIPPI DEPARTMENT OF TRANSPORTATION  
METRIC PLAN SHEET

07/30/03

DESCRIPTION OF SHEET

REVISION DATE WKG. NO. SH. NO.

STANDARD DRAWINGS - ROADWAY SHEETS (69)

BRIDGE END PAVEMENT	12-01-99	BE-1	107
PAVEMENT MARKING DETAILS FOR 2 & 4-LANE DIVIDED ROADWAY	12-01-99	PM-1	120
PAVEMENT MARKING DETAILS FOR INTERCHANGE ENTRANCE RAMP (PARALLEL & TAPER)	12-01-99	PM-3	122
PAVEMENT MARKING DETAILS FOR INTERCHANGE EXIT RAMP (PARALLEL & TAPER)	12-01-99	PM-4	123
PAVEMENT MARKING LEGEND DETAILS		PM-5	124
PAVEMENT MARKING LEGEND DETAILS		PM-6	125
EROSION CONTROL		EC-1	140
TYPICAL TEMPORARY EROSION CONTROL MEASURES (SILT FENCE, HAY BALES & BRUSH BARRIER)		TEC-1	142
TYPICAL TEMPORARY EROSION CONTROL MEASURES (SLOPE DRAIN AND TYPE A SILT BASIN)		TEC-2	143
DETAILS OF DITCH TREATMENTS		DT-1	145
GUARD RAIL: "W" BEAM (WOOD POSTS)		GR-1	180
GUARD RAIL: THRIE BEAM (WOOD POSTS)		GR-1A	181
GUARD RAIL: "W" BEAM (STEEL POSTS)		GR-1B	182
GUARD RAIL: MODIFIED THRIE BEAM (STEEL POSTS)		GR-1C	183
GUARD RAIL: BRIDGE END SECTION-TYPE D MODIFIED		GR-2B	186
GUARD RAIL: TYPICAL INSTALLATION AT BRIDGE APPROACHES FOR DIVIDED HIGHWAY	12-01-99	GR-4	194
GUARD RAIL: (TEMPORARY): TYPICAL INSTALLATION AT BRIDGE END DURING CONSTRUCTION PHASES	12-01-99	TGR-2	200
STANDARD DIRECTIONAL (GUIDE) SIGNS		SN-1	220
ROUTE SHIELDS AND "EXIT ONLY" PANELS		SN-2	221
STANDARD ROADSIDE SIGNS		SN-3	222
STANDARD ROADSIDE SIGNS		SN-3A	223
STANDARD ROADSIDE SIGNS		SN-3B	224
STANDARD ROADSIDE SIGNS ASSEMBLY AND INSTALLATION		SN-4	225
STANDARD ROADSIDE SIGNS ASSEMBLY AND INSTALLATION		SN-4A	226
STANDARD ROADSIDE SIGNS ASSEMBLY AND INSTALLATION		SN-4B	227
TYPICAL INSTALLATION OF GROUND MOUNTED DIRECTIONAL SIGNS		SN-5	228
BREAK-AWAY SIGN SUPPORTS		SN-6	229
BREAK-AWAY SIGN SUPPORTS		SN-6A	230
BREAK-AWAY SIGN SUPPORTS		SN-6B	231
SIGN FACE CONSTRUCTION & ATTACHMENT OF GROUND MOUNTED DIRECTIONAL SIGNS TO STEEL BEAMS (EXTRUDED ALUMINUM PANELS)	12-01-99	SN-7	232
TYPICAL INSTALLATION AND DETAILS OF DELINEATORS AND DISTANCE REFERENCE SIGNS		SN-8	233
TYPICAL CROSSOVER DELINEATION	12-01-99	SN-8B	235
TYPICAL GUARD RAIL DELINEATION		SN-8C	236
TRAFFIC CONTROL PLAN FOR POSTED SPEED LIMIT LESS THAN 65 MPH (4-LANE: MEDIAN LANE OR OUTSIDE LANE CLOSURE) (WORK DAY ONLY)		TCP-1	250
		TCP-2	251
TRAFFIC CONTROL PLAN FOR POSTED SPEED LIMIT LESS THAN 65 MPH (4-LANE: MEDIAN LANE OR OUTSIDE LANE CLOSURE) (EXTENDED PERIOD)		TCP-3	252
4-LANE TO 2-LANE TRANSITION	12-01-99	TCP-6	255
2-LANE TO 4-LANE TRANSITION	12-01-99	TCP-7	256
HIGHWAY SIGN AND BARRICADE DETAILS FOR CONSTRUCTION PROJECTS		TCP-10	259
TRAFFIC CONTROL PLAN MOBILE OPERATIONS MULTILANE ROADS AND TWO-LANE ROADS	12-01-99	TCP-11	260
		TCP-14	263
TRAFFIC CONTROL PLAN: UNEVEN PAVEMENT DETAILS		TCP-15	264
TEMPORARY STRIPING FOR TRAFFIC CONTROL 2-LANE AND 4-LANE DIVIDED HIGHWAY			
RURAL DRIVEWAYS		RD-1	271
TYPICAL GRADING BETWEEN CUTS AND FILLS		GT-1	272
SIGHT FLARES	12-01-99	SF-1	273
SUPERELEVATION TRANSITION CASE I (2% NORMAL SUBGRADE)		SE-2A	276
SUPERELEVATION TRANSITION CASE II (2% NORMAL SUBGRADE)		SE-2C	278
DRIVEWAYS, CURB & GUTTER, & SIDEWALK		SD-1	287
DRIVEWAYS, INTEGRAL CURB, & SIDEWALK		SD-2	288
MISCELLANEOUS DETAIL SHEET (1. WRAPPED PIPE JOINTS 2. DRAINAGE BLANKET FOR BRIDGE EMBANKMENT 3. EXCAVATION AT GRADE POINTS 4. EMBANKMENT BENCHING ON STEEP SLOPES)		MDS-1	290
DETAILS OF PAVED FLUMES		PF-1	291
PIPE CULVERT INSTALLATION		PI-1	300
CONCRETE PIPE COLLAR		PC-1	301
JUNCTION BOX FOR PIPE CULVERTS		JB-1	302
JUNCTION BOX FOR BOX CULVERTS TO CONCRETE ARCH PIPE		JB-1A	303
BRANCH CONNECTIONS		BC-1	305
TYPE I MEDIAN INLET (600-mm PIPE & UNDER)		MI-1	306
TYPE I MEDIAN INLET (725-mm TO 1300-mm PIPE)		MI-1A	307
TYPE I MEDIAN INLET (OVER 1300-mm PIPE)		MI-1B	308

STATE PROJECT NO.  
MISS. NH-0015-02(085) PH2

DESCRIPTION OF SHEET

WKG. NO. SH. NO.

TYPE II MEDIAN INLET (1300-mm & UNDER)	MI-2	309
TYPE II MEDIAN INLET (OVER 1300-mm PIPE)	MI-2A	310
MEDIAN INLETS FOR BOX CULVERTS (TYPE I & II)	MI-3	311
DETAILS OF GRATES FOR MEDIAN INLETS	IG-1	314
PAVED INLET APRON AND MEDIAN DITCH PLUG	PA-1	318
SMALL ANIMAL GUARD AND UNDERDRAIN MARKER	SAG-1	327
FLARED END SECTION FOR CONCRETE PIPE	FE-1	328
FLARED END SECTION FOR CONCRETE ARCH PIPE	FE-1A	329
DETAILS OF NORMAL UNDERDRAIN AND STORM DRAIN USED AS UNDERDRAIN	UD-1	331
NORMAL UNDERDRAIN TYPE II	UD-2	332
<b>BRIDGE DESIGN STANDARD DRAWING (25)</b>		
BASIC CULVERT DRAWING - BARREL JOINT LOCATIONS - NORMAL AND SKEWED CULVERTS GROUP I DIAGRAMS	M-IBJL-1	366.1
BASIC CULVERT DRAWING - BARREL JOINT LOCATIONS - NORMAL AND SKEWED CULVERTS GROUP II DIAGRAMS	M-IBJL-1	366.2
BASIC CULVERT DRAWING - BARREL JOINT LOCATIONS - NORMAL AND SKEWED CULVERTS GROUP III DIAGRAMS	M-IBJL-1	366.3
COLLAR DETAILS FOR BOX STRUCTURES	M-ICJ-1	367
SKEWED COLLAR DETAILS FOR BOX STRUCTURES	M-ICJS-1	368
BASIC CULVERT DRAWING - SINGLE CELL, HEIGHT- 1800 mm, SPANS - 1800 -6000 mm	M-IBS-1800-2W	370.1
BASIC CULVERT DRAWING - SINGLE CELL, HEIGHT- 1800 mm, SPANS - 1800 -6000 mm	M-IBS-1800-2W	370.2
BASIC CULVERT DRAWING - SINGLE CELL, HEIGHT- 3000 mm, SPANS - 3000 -6600 mm	M-IBS-3000-2W	372.1
BASIC CULVERT DRAWING - SINGLE CELL, HEIGHT- 3000 mm, SPANS - 3000 -6600 mm	M-IBS-3000-2W	372.2
WINGS WITH 1:3 SLOPE FOR BASIC CULVERT DRAWING - SINGLE CELL HEIGHTS 1800-3600 mm, SPANS 1800-7200 mm	M-IWS-3	374
WINGS WITH 1:3 SLOPE FOR BASIC CULVERT DRAWING - SINGLE CELL HEIGHTS 1800-3600 mm, SPANS 1800-7200 mm	M-IWS-3	375.1
WINGS WITH 1:3 SLOPE FOR BASIC CULVERT DRAWING - SINGLE CELL HEIGHTS 1800-3600 mm, SPANS 1800-7200 mm	M-IWS-3	375.2
BASIC CULVERT DRAWING - M-IBS CULVERTS MODIFIED FOR HIGH COVER - WINGS WITH 1:3 SLOPE	M-IBSM-3W	380
BASIC CULVERT DRAWING - M-IBS CULVERTS MODIFIED FOR HIGH COVER - WINGS WITH 1:3 SLOPE	M-IBSM-3W	381
BASIC CULVERT DRAWING - DOUBLE CELL, HEIGHT- 1800 mm, SPANS - 3600 -9600 mm	M-IBD-1800-2W	383.1
BASIC CULVERT DRAWING - DOUBLE CELL, HEIGHT- 1800 mm, SPANS - 3600 -9600 mm	M-IBD-1800-2W	383.2
WINGS WITH 1:3 SLOPE FOR BASIC CULVERT DRAWING - DOUBLE CELL HEIGHTS 1800-3600 mm, SPANS 3600-12 000 mm	M-IWD-3	387
WINGS WITH 1:3 SLOPE FOR BASIC CULVERT DRAWING - DOUBLE CELL HEIGHTS 1800-3600 mm, SPANS 3600-12 000 mm	M-IWD-3	388.1
WINGS WITH 1:3 SLOPE FOR BASIC CULVERT DRAWING - DOUBLE CELL HEIGHTS 1800-3600 mm, SPANS 3600-12 000 mm	M-IWD-3	388.2
BASIC CULVERT DRAWING - 15° SKEW DETAILS - WINGS WITH 1:3 SLOPE, - SINGLE & DOUBLE CELL CULVERTS	M-ISK-15-3W	397.1
BASIC CULVERT DRAWING - 15° SKEW DETAILS - WINGS WITH 1:3 SLOPE, - SINGLE & DOUBLE CELL CULVERTS	M-ISK-15-3W	397.2
BASIC CULVERT DRAWING - 30° SKEW DETAILS - WINGS WITH 1:3 SLOPE, - SINGLE & DOUBLE CELL CULVERTS	M-ISK-30-3W	400.1
BASIC CULVERT DRAWING - 30° SKEW DETAILS - WINGS WITH 1:3 SLOPE, - SINGLE & DOUBLE CELL CULVERTS	M-ISK-30-3W	400.2
BASIC CULVERT DRAWING - 45° SKEW DETAILS - WINGS WITH 1:3 SLOPE, - SINGLE & DOUBLE CELL CULVERTS	M-ISK-45-3W	403.1
BASIC CULVERT DRAWING - 45° SKEW DETAILS - WINGS WITH 1:3 SLOPE, - SINGLE & DOUBLE CELL CULVERTS	M-ISK-45-3W	403.2

SPECIAL DESIGN SHEETS - BRIDGE DRAWINGS (26)

CROSS SECTIONS (220)

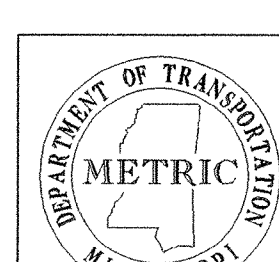
TOTAL NO. OF SHEETS

466-491

901-1120

594

117

MISSISSIPPI DEPARTMENT OF TRANSPORTATION	
<b>DETAILED INDEX</b>	
	
PROJECT NO. NH-0015-02(085) PH2	
COUNTY: JEFFERSON DAVIS	
DATE	FILENAME: D1.DGN
DESIGN TEAM	VOLKERT
CHECKED	
DATE	
WORKING NUMBER	D1-3
SHEET NUMBER	4

