

1st O. REV.

GENERAL INDEX

FOR DETAILED INDEX OF PLANS SEE SHEET NO. 2

DESCRIPTION	NUMBER OF SHEETS
TITLE SHEET	1
DETAILED INDEX	2
GENERAL NOTES	1
TYPICAL SECTIONS	13
QUANTITIES	22
PLAN AND PROFILES	40
SPECIAL DESIGN - ROADWAY ITEMS	135
BRIDGE DRAWINGS	0
SPECIAL DESIGN - BRIDGES	0
STANDARD DRAWINGS	26
TOTAL SHEETS	240

STATE OF MISSISSIPPI

MISSISSIPPI DEPARTMENT OF TRANSPORTATION

PLAN AND PROFILE OF PROPOSED STATE HIGHWAY

FEDERAL AID PROJECT NO. HSIP-6098-00(003)

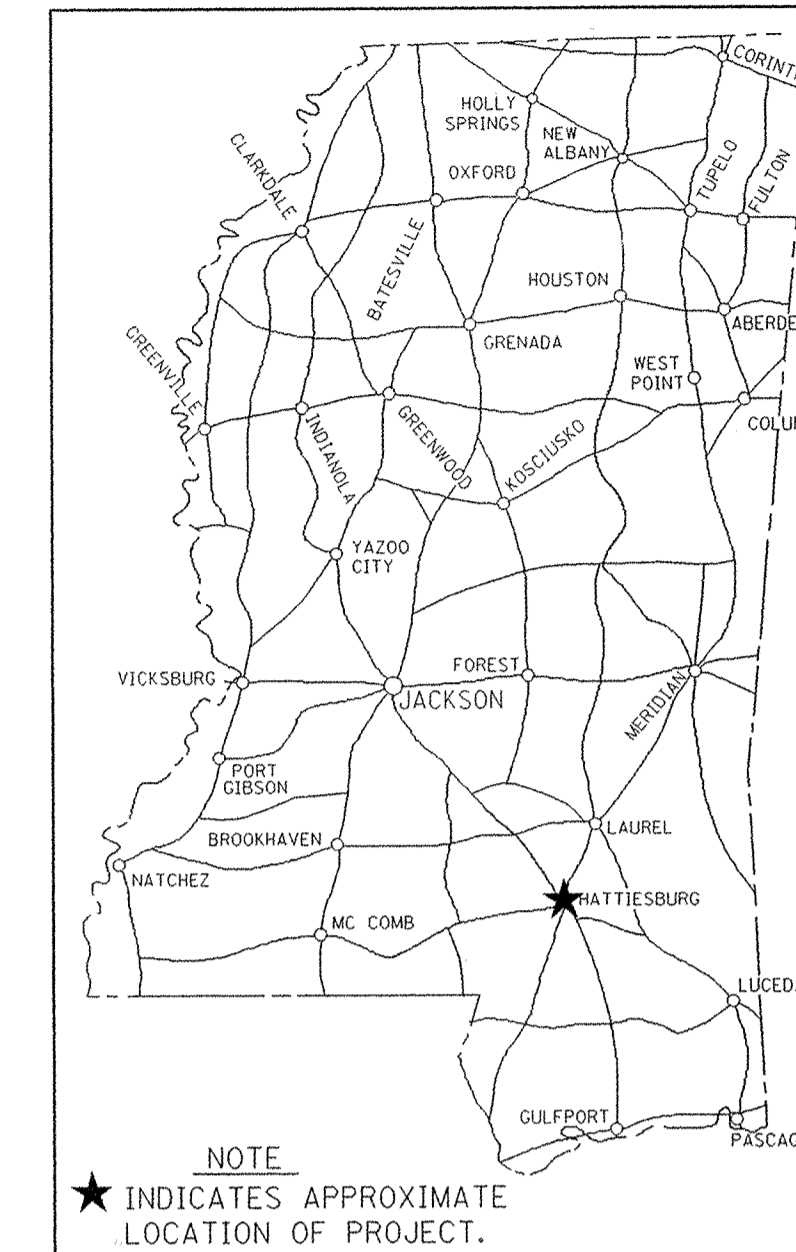
SR 198 (Hardy Street) From I-59 to US-49
FORREST COUNTY

FMS CONST. 102252/301000

001-12-07

RATIOS / SCALES
 PLAN 1:250
 PROFILE { HOR. 1:250
 VERT. 1:5
 LAYOUT

FED. ROAD REG. NO.	STATE	PROJECT NO.	SHEET NO.
4	MISS.	HSIP-6098-00(003)	1



DESIGN CONTROL

60 km/h = V (SPEED DESIGN)

ADT () = : ADT () =
 DHV = : D = % T = %

PERMITS ACQUIRED BY MDOT

WETLANDS AND WATERS PERMITS (NECESSARY FOR ULTIMATE IMPROVEMENTS ONLY):

	WATERS	WETLANDS
NATIONWIDE #14	<input type="checkbox"/>	<input type="checkbox"/>
NATIONWIDE (OTHER)*	<input type="checkbox"/>	<input type="checkbox"/>
GENERAL*	<input type="checkbox"/>	<input type="checkbox"/>
INDIVIDUAL (404)*	<input type="checkbox"/>	<input type="checkbox"/>

* ACQUISITION OF PERMITS FOR TEMPORARY IMPACTS DURING CONSTRUCTION ARE THE RESPONSIBILITY OF THE CONTRACTOR

STORMWATER PERMIT

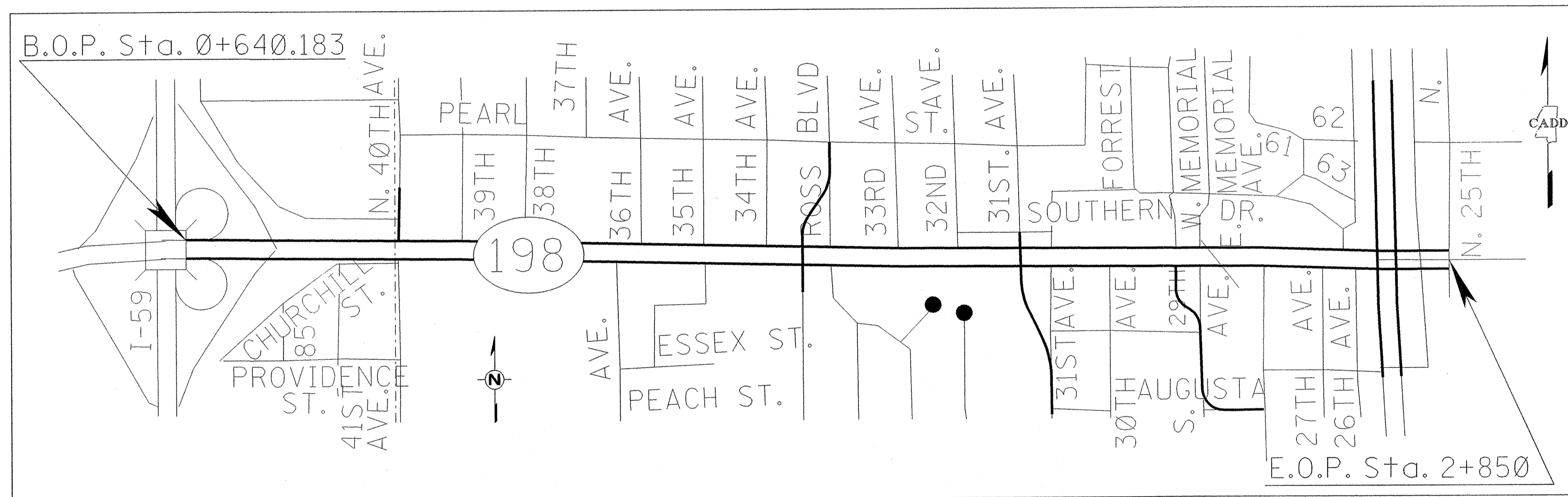
Y REQUIRED, CNOI SUBMITTED BY MDOT (DISTRIBUTED AREA = 5 ACRES +) (INTB 840M)

S REQUIRED, SCNOI TO BE SUBMITTED BY CONTRACTOR (1 TO 4.99 ACRES) (INTB 838M)

N NO STORMWATER PERMIT REQUIRED (<1 ACRE)

APPROVED BY: ATM DATE: 11-3-06

BRIDGE STRUCTURES REQ'D.



BOX BRIDGES REQ'D.

CONVENTIONAL SYMBOLS

- COUNTY LINE -----
- TOWN CORPORATION LINE -----
- SECTION LINE -----
- EXISTING ROAD OR TRAVELED WAY -----
- PROPOSED ROAD OR TRAVELED WAY -----
- RAILROAD -----
- SURVEY LINE -----
- BRIDGES -----

EQUATIONS

EXCEPTIONS

LENGTH DATA

LENGTH OF ROADWAY	2,210 m
LENGTH OF BRIDGES	0.0 m
LENGTH OF PROJECT (NET)	2,210 m
LENGTH OF EXCEPTIONS	0.0 m
LENGTH OF PROJECT (GROSS)	2,210 m



APPROVED: *Harry Lee James* 11/2/06
 CHIEF ENGINEER DATE

Samuel R. Brown 11/2/06
 EXECUTIVE DIRECTOR DATE

MISSISSIPPI DEPARTMENT OF TRANSPORTATION

APPROVED: _____ DATE _____

DIVISION ADMINISTRATOR DATE

FEDERAL HIGHWAY ADMINISTRATION
 DEPARTMENT OF TRANSPORTATION

ROADWAY DESIGN MISSISSIPPI DEPARTMENT OF TRANSPORTATION LAYOUT SHEET

GENERAL NOTES

- UTILITIES ON THE DRAWINGS ARE SHOWN IN THEIR ORIGINAL LOCATION BASED UPON THE BEST INFORMATION AVAILABLE TO THE ENGINEER. ALL KNOWN UTILITY CONFLICTS WITH CONSTRUCTION HAVE BEEN RELOCATED AS CERTIFIED BY THE CITY OF HATTIESBURG. THE ENGINEER CANNOT AND DOES NOT WARRANT THAT THIS INFORMATION IS COMPLETE OR ACCURATE. THE CONTRACTOR MUST COORDINATE DIRECTLY WITH THE INVOLVED UTILITY OWNERS TO HAVE UNDERGROUND UTILITY LINES FIELD LOCATED IN ADVANCE OF CONSTRUCTION. RETIRED IN PLACE UTILITIES SHOULD BE VERIFIED WITH AFFECTED UTILITY COMPANIES.
- IT SHALL BE THE RESPONSIBILITY OF THE CONTRACTOR TO PROTECT EXISTING STRUCTURES SUCH AS PIPES, INLETS, APRONS, BRIDGES, ETC. FROM DAMAGE WHICH MIGHT OCCUR DURING CONSTRUCTION. EXTREME CARE SHALL BE EXERCISED IN UNDERCUT AREAS AND THE UNDERCUT DEPTH MAY BE ADJUSTED AT CROSS DRAINS, AS DIRECTED BY THE ENGINEER. THE CONTRACTOR SHALL REPLACE OR REPAIR, AS DIRECTED BY THE ENGINEER, ANY STRUCTURES DAMAGED DURING THE LIFE OF THE CONTRACT. NO PAYMENT WILL BE MADE FOR REPLACEMENT OR REPAIR OF DAMAGED ITEMS.
- THE ENDS OF EXISTING PIPES TO BE ABANDONED IN PLACE SHALL BE PLUGGED WITH CONCRETE (NOT A SEPARATE PAY ITEM).
- THE CONTRACTOR IS RESPONSIBLE FOR PROVIDING BRACING, SHORING, OR ANY GROUND SUPPORT SYSTEM REQUIRED TO PREVENT A FAILURE FROM OCCURRING DURING EXCAVATION. PROTECTIVE MEASURES INCLUDING THE MATERIALS AND LABOR FOR DESIGNING AND CONSTRUCTING THE FACILITY ARE NOT CONSIDERED A SEPARATE PAY ITEM.
- REMOVAL OF RAISED PAVEMENT MARKERS IS NOT CONSIDERED A SEPARATE PAY ITEM.
- CONES SHALL BE NARROW PROFILE WITH A MINIMUM HEIGHT OF 700mm AND A MINIMUM WEIGHT OF 4.5kg. CONES USED IN SPEED ZONES EQUAL TO OR GREATER THAN 45 MPH SHALL BE NARROW PROFILE WITH A MINIMUM HEIGHT OF 100mm AND A MINIMUM WEIGHT OF 6.8kg. ALL CONES SHALL BE APPROVED BY THE ENGINEER PRIOR TO USE.
- TEMPORARY STRIPING SHALL CONFORM TO FINISHED STRIPE SPECIFICATIONS FOR ALIGNMENT, NEATNESS AND STRAIGHTNESS.
- FLUORESCENT ORANGE SHEETING SHALL BE USED ON ALL CONSTRUCTION AND TRAFFIC CONTROL SIGNS EXCEPT FOR THOSE DESIGNATED IN PLANS TO BE BLACK LEGEND AND BORDER ON WHITE BACKGROUND.
- THE CONTRACTOR IS TO REMOVE AND RESET ANY SIGNS WHICH CONFLICT WITH CONSTRUCTION (NOT A SEPARATE PAY ITEM).
- THE LOCATION AND SPACING OF SIGNS SHOWN ON THE TRAFFIC CONTROL PLAN ARE APPROXIMATE AND MAY BE ADJUSTED AS NECESSARY TO FIT FIELD CONDITIONS.
- PRIOR TO POURING PAVED ISLANDS, THE TRAFFIC ENGINEERING DIVISION SHOULD BE NOTIFIED SO THAT SIGNS REQUIRED IN ISLANDS CAN BE LOCATED.
- SOME WORK MAY BE REQUIRED OUTSIDE THE PROJECT LIMITS BEYOND THE B.O.P. AND E.O.P. NO ADDITIONAL COMPENSATION WILL BE MADE FOR SUCH WORK EXCEPT AS PROVIDED BY SPECIFIC PAY ITEMS SHOWN ON THE PLANS.
- THE EROSION CONTROL DEVICES REFERENCED IN THESE PLANS ARE A MINIMUM RESPONSIBILITY. IT IS THE RESPONSIBILITY OF THE CONTRACTOR TO INSURE THAT SILT DOES NOT LEAVE THE RIGHT OF WAY OR CONTAMINATE WATERS OF THE U.S. DURING CONSTRUCTION. THE CONTRACTOR SHALL SUBMIT AN EROSION CONTROL PLAN PRIOR TO COMMENCEMENT OF WORK AND MAINTAIN THE PLAN DURING CONSTRUCTION.
- ALL PIPE JOINTS ARE TO BE WRAPPED IN TYPE V GEOTEXTILE FABRIC, 600mm WIDTH. ALL PICKUP HOLES ARE TO BE PLUGGED AND COVERED WITH TYPE V GEOTEXTILE FABRIC TO THE SATISFACTION OF THE ENGINEER. (NOT A SEPARATE PAY ITEM).
- WHERE MILLING OF THE ROADWAY LANES IS REQUIRED, THE CONTRACTOR SHALL PROVIDE OUTLETS IN THE EXISTING SHOULDERS AT SUFFICIENT INTERVALS TO PREVENT POOLING OR STANDING WATER ON THE MILLED SURFACE (ABSORBED ITEM).
- △ ANYWHERE IN THESE PLANS, WHEN REFERENCE IS MADE TO PROJECT NUMBER STP-6098-00(003), IT IS UNDERSTOOD THAT THE CORRECT PROJECT NUMBER IS HSIP-6098-00(003).

UTILITY CONTACTS:

MS ONE CALL: 1-800-227-6477
 BELLSOUTH: Mr. Steve Craig (601) 545-6432
 CITY OF HATTIESBURG WATER & SEWER: Mr. Bennie Sellers (601) 545-4640
 Mr. Dennis Gilmore (601) 545-4640
 COMCAST CABLE: Mr. Mike Bonner (601) 579-3967
 MISSISSIPPI POWER: Mr. Sam Lee (601) 426-4824
 WILMUT GAS: Mr. Bobby Brooks (601) 544-6001

PS & E PLANS-DATE 1/12/07		
FMS CON. # 102252-301000		
REVISIONS		
DATE	SHEET NO.	BY
1/31/07	1, 2, 18-20, & 100.012	ATM
2/6/07	19	ATM
2/13/07	16-20, 34	PAB
2/23/07	20	JMA
2/27/07	18 & 20	ATM
3/14/07	19,20,100.004-100.017	PAB

MISSISSIPPI DEPARTMENT OF TRANSPORTATION			
GENERAL NOTES			
PROJECT NO. HSIP-6098-00(003) △			
COUNTY : FORREST			
DATE: _____		FILENAME: GENNOTES.DGN	
DESIGN TEAM: _____		CHECKED: _____ DATE: _____	
WORKING NUMBER GN-1		SHEET NUMBER 2	

METRIC PLAN AND DESIGNATION MISSISSIPPI DEPARTMENT OF TRANSPORTATION



DESCRIPTION OF SHEET

REVISION DATE WKG. NO. SH. NO.


TITLE SHEET (1)		1	1
GENERAL NOTES		GN-1	2
DETAILED INDEX (2)			
DETAILED INDEX		DI-1	3
DETAILED INDEX		DI-2	4
TYPICAL SECTION SHEETS (12)			
TYPICAL SECTION MAIN FACILITY (HARDY STREET) STA. 1+014.504 TO STA. 2+737.02		TS-1	5
TYPICAL SECTION MAIN FACILITY (HARDY STREET) STA. 2+855.000 TO 2+917.240 (EOP)		TS-1A	6
TYPICAL SECTION HARDY STREET @+640.183 (BOP) TO @+881.694		TS-2	7
TYPICAL SECTION HARDY STREET @+881.694 TO 1+014.504		TS-3	8
TYPICAL SECTION - RIGHT TURN LANE CONSTRUCTION (HARDY STREET)		TS-4	9
TYPICAL SECTION - LEFT TURN LANE CONSTRUCTION & CLOSURE OF TURN LANES AND MED OPENINGS (HARDY ST.)		TS-5	10
TYPICAL SECTION NORTH 40TH AVENUE		TS-6	11
TYPICAL SECTION - NEW CONSTRUCTION S. 29th AVE., S. 31st AVE., ROSS BLVD., RELOCATED ROSS BLVD.		TS-7	12
TYPICAL SECTION - EAST AND WEST FRONTAGE ROADS US-49		TS-8	13
TYPICAL SECTION - WIDENING AND OVERLAY NORTH 31st STREET & SOUTH 34th AVE.		TS-9	14
TYPICAL SECTION - WIDENING AND OVERLAY SOUTH 29th AVE.		TS-10	15
TYPICAL SECTION - US-49 STA. 48+267.240 - STA. 48+460.037		TS-11	16
TYPICAL SECTION US-49 48+460.037 TO 48+800.454		TS-12	17
SUMMARY OF QUANTITY SHEETS (3)			
SUMMARY OF QUANTITIES		SQ1	18
SUMMARY OF QUANTITIES		SQ2	19
SUMMARY OF QUANTITIES (TRAFFIC SIGNALS)		TSQ	20
ESTIMATED QUANTITY SHEETS (19)			
ESTIMATED QUANTITIES - CURB REQUIRED MEDIAN AREAS HARDY ST. AND US-49		EQ-1	21
ESTIMATED QUANTITIES - CURB REQ'D. LT. AND RT. CL HARDY & 49 AND SIDE STREETS		EQ-2	22
ESTIMATED QUANTITIES - CURB REQ'D. LT. AND RT. CL HARDY & 49 AND SIDE STREETS		EQ-2a	23
ESTIMATED QUANTITIES - CURB REQ'D. LT. AND RT. CL HARDY & 49 AND SIDE STREETS		EQ-2b	24
ESTIMATED QUANTITIES - CURB REQ'D. LT. AND RT. CL HARDY & 49 AND SIDE STREETS		EQ-2c	25
ESTIMATED QUANTITIES - CURB REMOVAL REQUIRED		EQ-3	26
ESTIMATED QUANTITIES - PIPE CULVERTS AND DRAINAGE STRUCTURES		EQ-4	27
ESTIMATED QUANTITIES - PIPE CULVERTS AND DRAINAGE STRUCTURES		EQ-4a	28
ESTIMATED QUANTITIES - PIPE CULVERTS AND DRAINAGE STRUCTURES		EQ-4b	29
ESTIMATED QUANTITIES - PIPE CULVERTS AND DRAINAGE STRUCTURES		EQ-4c	30
ESTIMATED QUANTITIES - JUNCTION BOXES		EQ-5	31
ESTIMATED QUANTITIES - 225mm (9") RCP REPAIRS REQUIRED		EQ-6	32
ESTIMATED QUANTITIES - (STANDARD ROADSIDE SIGN)		EQ-7	33
ESTIMATED QUANTITIES - (STANDARD ROADSIDE SIGN ASSEMBLY)		EQ-8	34
ESTIMATED QUANTITIES - (TRAFFIC CONTROL ITEMS)		EQ-9	35
ESTIMATED QUANTITIES - (TRAFFIC CONTROL ITEMS)		EQ-10	36
ESTIMATED QUANTITIES - (TRAFFIC CONTROL ITEMS)		EQ-11	37
ESTIMATED QUANTITIES - (TEMPORARY SIGNS)		EQ-12	38
ESTIMATED QUANTITIES - SIDEWALK REQUIRED		EQ-13	39
PLAN AND PROFILE SHEETS (40)			
PLAN AND PROFILE - HARDY ST. STA. @+640.183 (BOP) TO STA. @+725.000		2	40
PLAN AND PROFILE - HARDY ST. STA. @+725.000 TO STA. @.952.000		2A	41
PLAN AND PROFILE - HARDY ST. STA. @+975 (BOP) TO STA. 1+125.000		3	42
PLAN AND PROFILE - NORTH 40th AVENUE		3a	43
PLAN AND PROFILE - HARDY ST. STA. 1+125.000 TO STA. 1+325.000		4	44
PLAN AND PROFILE - HARDY ST. STA. 1+325.000 TO STA. 1+525.000		5	45
PLAN AND PROFILE - HARDY ST. STA. 1+525.000 TO STA. 1+725.000		6	46
PLAN AND PROFILE - HARDY ST. STA. 1+725.000 TO STA. 1+925.000		7	47
PLAN AND PROFILE - S. 34th AVE. AND ROSS BLVD. RELOCATION STA. @+900.000 TO STA. 1+100.000		7a	48
PLAN AND PROFILE - DRAINAGE DETAILS ROSS BLVD. RELOCATION CONN. "F", CONN "G", AND CONN. "H"		7a1	49
PLAN AND PROFILE - S 34th AVE. AND ROSS BLVD. RELOCATION - ROW STA. @+900 TO STA. 1+100		7a2	50
PLAN AND PROFILE - ROSS BLVD. RELOCATION - ROW STA. 1+100 TO STA. 1+150 - ROSS TIE - ROW STA. 1+020 TO STA. 1+100		7a3	51
PLAN AND PROFILE - ROSS BLVD. STA. 1+100.000 TO STA. 1+225.000		7b	52
PLAN AND PROFILE - DRAINAGE DET. ROSS BLVD. - CONNECTION TO EXIST. @ SS-2-14		7b1	53
PLAN AND PROFILE - ROSS TIE - STA. 1+000.000 TO STA. 1+100.000		7c	54

DESCRIPTION OF SHEET

REVISION DATE WKG. NO. SH. NO.

PLAN AND PROFILE - HARDY ST. STA. 1+925.000 TO STA. 2+125.000		8	55
PLAN AND PROFILE - HARDY ST. STA. 2+125.000 TO STA. 2+325.000		9	56
PLAN AND PROFILE - RELOC. S. 31st AVE. STA. @+800.000 TO STA. @+925.000		9a	57
PLAN AND PROFILE - DRAINAGE DETAILS S. 31st AVE. - IAT "U", CONN. "V", CONN. "S", CONN. "T", AND CONN. "T-1"		9a1	58
PLAN AND PROFILE - S. 31st AVE. RELOCATION - ROW STA. @+800.000 TO STA. @+925.000		9a2	59
PLAN AND PROFILE - RELOC. S. 31st AVE. STA. @+925.000 TO STA. 1+100.000		9b	60
PLAN AND PROFILE - S. 31st AVE. RELOCATION - ROW STA. @+925.000 TO STA. 1+063.430		9b1	61
PLAN AND PROFILE - HARDY ST. STA. 2+325.000 TO STA. 2+525.000		10	62
PLAN AND PROFILE - RELOC. S. 29th AVE. STA. 10+000.000 TO STA. 10+150.000		10a	63
PLAN AND PROFILE - RELOC. S. 29th AVE. ROW STA. 10+000.000 TO STA. 10+150.000		10a1	64
PLAN AND PROFILE - S. 29th AVE. RELOC. STA. 10+150.000 TO STA. 10+325.000		10b	65
PLAN AND PROFILE - RELOC. S. 29th AVE. ROW STA. 10+150.000 TO STA. 10+325.000		10b1	66
PLAN AND PROFILE - AUGUSTA ST. STA. +000.000 ITO STA. 1+115.000		10c	67
PLAN AND PROFILE - AUGUSTA STREET ROW		10c1	68
PLAN AND PROFILE - HARDY ST. STA. 2+525.000 TO STA. 2+725.000		11	69
PLAN AND PROFILE - HARDY ST. STA. 2+725.000 TO STA. 2+850.000 (EOP)		12	70
PLAN AND PROFILE - US-49 STA. 48+200.000 TO STA. 48+400.000		13	71
PLAN AND PROFILE - US-49 DRAINAGE DETAILS SBL STA. 48+200.000 TO STA. 48+400.000		13a	72
PLAN AND PROFILE - US-49 DRAINAGE DETAILS NBL STA. 48+200.000 TO STA. 48+400.000		13b	73
PLAN AND PROFILE - US-49 STA. 48+400.000 TO STA. 48+600.000		14	74
PLAN AND PROFILE - US-49 DRAINAGE DETAILS SBL STA. 48+400.000 TO STA. 48+600.000		14a	75
PLAN AND PROFILE - US-49 DRAINAGE DETAILS NBL STA. 48+400.000 TO STA. 48+600.000		14b	76
PLAN AND PROFILE - US-49 STA. 48+600.000 TO STA. 48+800.000		15	77
PLAN AND PROFILE - US-49 DRAINAGE DETAILS SBL STA. 48+600.000 TO STA. 48+800.000		15a	78
PLAN AND PROFILE - US-49 STA. 48+600.000 TO STA. 48+825.000		16	79
SPECIAL DESIGN SHEETS (135)			
ROADWAY DETAILS - NORTH 40th AVENUE		RD-1	80
ROADWAY DETAILS - RELOCATION OF S. 34th AVE. AND ROSS BLVD.		RD-2	81
ROADWAY DETAILS - RELOCATION OF S. 34th AVE. AND ROSS BLVD.		RD-3	82
ROADWAY DETAILS - RELOCATION OF S. 31st AVE.		RD-4	83
ROADWAY DETAILS - RELOCATION OF S. 31st AVENUE		RD-5	84
ROADWAY DETAILS - US-49 STA. 48+200 TO STA. 48+375		RD-6	85
ROADWAY DETAILS - US-49 STA. 48+375 TO STA. 48+550		RD-7	86
ROADWAY DETAILS - US-49 STA. 48+550 TO STA. 48+700		RD-8	87
ROADWAY DETAILS - DET. OF MEDIAN ISLANDS ON HARDY ST. AND SPECIAL DESIGN SLOTTED CURB		RD-9	88
ROADWAY DETAILS - RELOCATION OF S 29th AVE. STA. 10+000 TO STA. 10+200		RD-10	89
ROADWAY DETAILS - RELOCATION OF S 29th AVE. STA. 10+200 TO STA. 10+425		RD-11	90
DRAINAGE DETAIL - SS-2 CAPPING DETAIL		DD-1	91
MISCELLANEOUS CONSTRUCTION DETAILS		MCD-1	92
STRIPING DETAILS - 40th AVENUE		STD-1	93
STRIPING DETAILS - NORTH AND SOUTH 38th AVE.		STD-2	94
STRIPING DETAILS - RELOCATED ROSS BLVD.		STD-3	95
STRIPING DETAILS - RELOCATED ROSS BLVD.		STD-3A	96
STRIPING DETAILS - ROSS BLVD. CONNECTION (OLD ROSS BLVD)		STD-3B	97
STRIPING DETAILS - RELOCATED SOUTH 31st AVENUE		STD-4	98
STRIPING DETAILS - NORTH 34th AVENUE		STD-4A	99
STRIPING DETAILS - NORTH 29th STREET		STD-5	100
STRIPING DETAILS - SOUTH 29th AVENUE		STD-5a	100.001
STRIPING DETAILS - SOUTH 29th AVENUE		STD-5b	100.002
STRIPING DETAILS - INTERSECTION AT SOUTH 28TH AVE.		STD-6	100.003
STRIPING DETAILS - HARDY STREET STA. @+975 (BOP) TO STA. 1+100		STD-8	100.004
STRIPING DETAILS - HARDY STREET STA. 1+100 TO STA. 1+300		STD-9	100.005
STRIPING DETAILS - HARDY STREET STA. 1+300 TO STA. 1+500		STD-10	100.006
STRIPING DETAILS - HARDY STREET STA. 1+500 TO STA. 1+700		STD-11	100.007
STRIPING DETAILS - HARDY STREET STA. 1+700 TO STA. 1+900		STD-12	100.008
STRIPING DETAILS - HARDY STREET STA. 1+900 TO STA. 2+100		STD-13	100.009
STRIPING DETAILS - HARDY STREET STA. 2+100 TO STA. 2+300		STD-14	100.010

METRIC PLAN MISSISSIPPI DEPARTMENT OF TRANSPORTATION

MISSISSIPPI DEPARTMENT OF TRANSPORTATION	
DETAILED INDEX	
	
PROJECT NO.	STP-6098-00(003)
COUNTY :	FORREST
WORKING NUMBER	DI-1
FILENAME:	
DESIGN TEAM	CHECKED
DATE	DATE
SHEET NUMBER	3

STATE	PROJECT NO.
MISS.	STP-6098-00(003)

DESCRIPTION OF SHEET

WKG. NO. SH. NO.

DESCRIPTION OF SHEET

WKG. NO. SH. NO.

DESCRIPTION OF SHEET	WKG. NO.	SH. NO.
SPECIAL DESIGN SHEETS (CONT)		
STRIPING DETAILS - HARDY STREET STA. 2+300 TO STA. 2+500	STD-15	100.011
STRIPING DETAILS - HARDY STREET STA. 2+500 TO STA. 2+700	STD-16	100.012
STRIPING DETAILS - HARDY STREET STA. 2+700 TO STA. 2+900	STD-17	100.013
STRIPING DETAILS - HARDY STREET STA. 2+900 TO STA. 2+917.240	STD-18	100.014
STRIPING DETAILS - US-49 STA. 48+250 TO STA. 48+425	STD-19	100.015
STRIPING DETAILS - US-49 STA. 48+525 TO STA. 48+710	STD-20	100.016
STRIPING DETAILS - US-49 STA. 47+710 TO STA. 48+805	STD-21	100.017
STRIPING DETAILS - HARDY STREET STA. 0+640.183 TO STA. 0+835.000	STD-22	100.018
STRIPING DETAILS - HARDY STREET STA. 835.0000+ TO STA. 0+998.975	STD-23	100.019
DETAIL OF CONSTRUCTION SIGNING	DCS-1	100.020
TRAFFIC CONTROL PLANS	TC-1 THRU TC-44	100.021-100.064
PERMANENT SIGNING PLANS	PSP-1 THRU PSP-4	100.065-100.068
TRAFFIC SIGNAL INSTALLATION HARDY STREET AT INTERSTATE 59	TSI-1	100.069
TRAFFIC SIGNAL INSTALLATION HARDY STREET AT I-59 EAST RAMP	TSI-2	100.070
TRAFFIC SIGNAL INSTALLATION HARDY STREET AT 40th AVENUE	TSI-3	100.071
TRAFFIC SIGNAL INSTALLATION HARDY STREET AT 38th AVENUE	TSI-4	100.072
TRAFFIC SIGNAL INSTALLATION HARDY STREET AT 37th - 35th AVENUE	TSI-5	100.073
TRAFFIC SIGNAL INSTALLATION HARDY STREET AT 34th AVENUE/ROSS BLVD.	TSI-6	100.074
TRAFFIC SIGNAL INSTALLATION HARDY STREET AT 33rd and 32nd AVENUE	TSI-7	100.075
TRAFFIC SIGNAL INSTALLATION HARDY STREET AT 31st AVENUE	TSI-8	100.076
TRAFFIC SIGNAL INSTALLATION HARDY STREET AT 29th AVENUE	TSI-9	100.077
TRAFFIC SIGNAL INSTALLATION HARDY STREET AT 28th AVENUE	TSI-10	100.078
TRAFFIC SIGNAL INSTALLATION HARDY STREET AT U.S.HWY.49	TSI-11	100.079
TRAFFIC SIGNAL INSTALLATION HARDY STREET AT U.S.HWY.49	TSI-12	100.080
TRAFFIC SIGNAL INTERCONNECT PLAN U.S. HIGHWAY 49 HARDY STREET TO U.S.M.	TSIP-1	100.081
TRAFFIC SIGNAL INTERCONNECT PLAN U.S. HIGHWAY 49 W. 4th STREET TO W. 7th STREET	TSIP-2	100.082
TRAFFIC SIGNAL INTERCONNECT PLAN U.S. HIGHWAY 49 M.D.O.T. HQ TO EAST DRIVE	TSIP-3	100.083
TRAFFIC SIGNAL INTERCONNECT PLAN U.S. HIGHWAY 49 MS. HWY. 42 TO N. 31st STREET	TSIP-4	100.084
TRAFFIC SIGNAL INTERCONNECT PLAN U.S. HIGHWAY 49 N. 31st STREET TO McCAFFEY RD.	TSIP-5	100.085
TRAFFIC SIGNAL INTERCONNECT PLAN U.S. HIGHWAY 49 CONVENTION CENTER TO I-59	TSIP-6	100.086
TRAFFIC SIGNAL INTERCONNECT PLAN U.S. HIGHWAY 49 I-59 NORTH RAMP TO CLASSIC DRIVE	TSIP-7	100.087
TRAFFIC SIGNAL INTERCONNECT PLAN U.S. HIGHWAY 49 I-59 WEST RAMP	TSIP-8	100.088
TRAFFIC SIGNAL INTERCONNECT PLAN MDOT DISTRICT OFFICE SITE PLAN	DOSP-1	100.089
TRAFFIC SIGNAL INTERCONNECT PLAN MDOT DISTRICT OFFICE FIRST FLOOR PLAN POWER/COMMUNICATIONS	DOFP-1	100.090
TRAFFIC SIGNAL INTERCONNECT PLAN MDOT DISTRICT OFFICE SECOND FLOOR PLAN POWER/COMMUNICATIONS	DOFP-2	100.091
DETAIL OF TRAFFIC SIGNAL HEADS, TRAFFIC SIGNAL SIGNS AND GENERAL NOTES	TSD-1	100.092
LOOP DETECTOR DETAILS FOR TRAFFIC SIGNAL INSTALLATION	TSD-2	100.093
PULLBOX AND CONDUIT TRENCHING DETAILS FOR TRAFFIC SIGNAL INSTALLATION	TSD-3	100.094
SPAN WIRE AND STEEL STRAIN POLE DETAILS FOR TRAFFIC SIGNAL INSTALLATION	TSD-4	100.095
TYPICAL DETAILS OF CONTROLLER CABINET MOUNTINGS, TYPE I POLE ATTACHMENTS AND MISC. DETAILS	TSD-5	100.096
MAST ARM AND PEDESTAL POLE DETAILS FOR TRAFFIC SIGNAL INSTALLATION	TSD-6	100.097
TRAFFIC CONTROL PLAN (TYPICAL SIGNAL INSTALLATION)	TSD-7	100.098
FIBER OPTIC GENERAL NOTES AND MISCELLANEOUS DETAILS	FO-1	100.099
UNDERGROUND FIBER OPTIC ENTRANCE DETAILS	FO-2	100.100
CAMERA MOUNTING EXTENSION DETAILS AND GENERAL NOTES	FO-3	100.101
DETAIL OF EXISTING 9" (225mm) REINF. CONCRETE PAVEMENT JOINT REPAIR	TPR-1	100.102
DETAIL OF EXISTING 9" (225mm) REINF. CONCRETE PAVEMENT JOINT REPAIR	TPR-2	100.103
JOINT LAYOUT - US-49/HARDY STREET	JD-1	100.104
JOINT DETAILS - LAYOUT INSTRUCTIONS	JD-2	100.105
JOINT DETAILS - LAYOUT INSTRUCTIONS	JD-3	100.106
JOINT DETAILS FOR BEGINNING AND ENDING CONC. OVERLAY	JD-4	100.107
TRAFFIC CONTROL DETAILS-DRUM PLACEMENT AND SHOULDER CLOSURE	TCP-SC	100.108
PAVEMENT REMOVAL DETAIL - ROSS BLVD. RELOCATION	PR-1	100.109
PAVEMENT REMOVAL DETAIL - ROSS BLVD. RELOCATION	PR-2	100.110
PAVEMENT REMOVAL DETAIL - SOUTH 28th AVE. RELOCATION	PR-3	100.111
PAVEMENT REMOVAL DETAIL - SOUTH 28th AVE. RELOCATION	PR-4	100.112
PAVEMENT REMOVAL DETAIL - 40th AVE.	PR-6	100.113
RIGHT OF WAY MARKER	RW-1	100.114

DESCRIPTION OF SHEET	WKG. NO.	SH. NO.
STANDARD DRAWINGS (METRIC) (26)		
CONCRETE PAVEMENT JOINTS	10/01/98	PJ-1 104
PAVEMENT MARKING DETAILS FOR 2-LANE AND 4-LANE DIVIDED HIGHWAYS	12/01/99	PM-1 120
PAVEMENT MARKING DETAILS FOR 4-LANE AND 5-LANE UNDIVIDED ROADWAYS	12/01/99	PM-2 121
PAVEMENT MARKING LEGEND DETAILS	10/01/98	PM-5 124
PAVEMENT MARKING LEGEND DETAILS	10/01/98	PM-6 125
TYPICAL TEMPORARY EROSION CONTROL MEASURES (SILT FENCE, HAY BALES & BRUSH BARRIER)		TEC-1 142
TRAFFIC CONTROL PLAN WITH FLAGGER (ONE LANE CLOSURE OF TWO-WAY TRAFFIC)		TCP-1 250
TRAFFIC CONTROL PLAN FOR POSTED SPEED LIMIT LESS THAN 65 MPH (4 LANE; MEDIAN LANE OR OUTSIDE LANE CLOSURE)(WORK DAY ONLY)		TCP-2 251
TRAFFIC CONTROL PLAN FOR POSTED SPEED LIMIT LESS THAN 65 MPH (4 LANE; MEDIAN LANE OR OUTSIDE LANE CLOSURE)(EXTENDED PERIOD)		TCP-3 252
HIGHWAY SIGN AND BARRICADE DETAILS FOR CONSTRUCTION PROJECTS		TCP-10 259
TEMPORARY STRIPING FOR TRAFFIC CONTROL 2-LANE AND 4-LANE DIVIDED HIGHWAYS		TCP-15 264
TEMPORARY STRIPING FOR TRAFFIC CONTROL 4-LANE AND 5-LANE UNDIVIDED ROADWAYS		TCP-16 265
DRIVEWAYS, CURB & GUTTER & SIDEWALK	10/01/98	SD-1 287
DRIVEWAYS, INTEGRAL CURB & SIDEWALK	10/01/98	SD-2 288
CURB - CUT RAMP	10/01/98	CCR-1 289
PIPE CULVERT INSTALLATION	10/01/98	PI-1 300
CONCRETE PIPE COLLAR	10/01/98	PC-1 301
JUNCTION BOX FOR PIPE CULVERTS	10/01/98	JB-1 302
JUNCTION BOX CULVERT TO CONCRETE ARCH PIPE	10/01/98	JB-1A 303
DETAILS OF GRATES FOR GUTTER INLETS	10/01/98	IG-2 315
GUTTER INLET FOR TYPE 2 CURB (OUTLET 90° TO ROADWAY)	10/01/98	GI-1 316
GUTTER INLET FOR TYPE 2 CURB STORM SEWER ALONG ROADWAY	10/01/98	GI-1A 317
STORM SEWER STRUCTURE TYPE SS-2	10/01/98	SS-2 322
STORM SEWER INLET TYPE SS-3	10/01/98	SS-3 323
STORM SEWER STRUCTURE, TYPE SS-4 HEADER CURB	10/01/98	SS-4 324
FLARED END SECTION FOR CONCRETE PIPE	10/01/98	FE-1 328

METRIC PLAN
ROADWAY DESIGN DIVISION
MISSISSIPPI DEPARTMENT OF TRANSPORTATION

BY		MISSISSIPPI DEPARTMENT OF TRANSPORTATION	
REVISION		DETAILED INDEX	
DATE		PROJECT NO. STP-6098-00(003)	
DESIGN TEAM		COUNTY : FORREST	
CHECKED		WORKING NUMBER	
DATE		DI-2	
		SHEET NUMBER	
		4	

