

FED. ROAD REG. NO.	STATE	PROJECT NO.	SHEET NO.
4	MISS.	104892 301000	1

STATE OF MISSISSIPPI
MISSISSIPPI DEPARTMENT OF TRANSPORTATION
INTERSECTION IMPROVEMENTS
FEDERAL AID PROJECT NO. HSIP-0014-03(061)

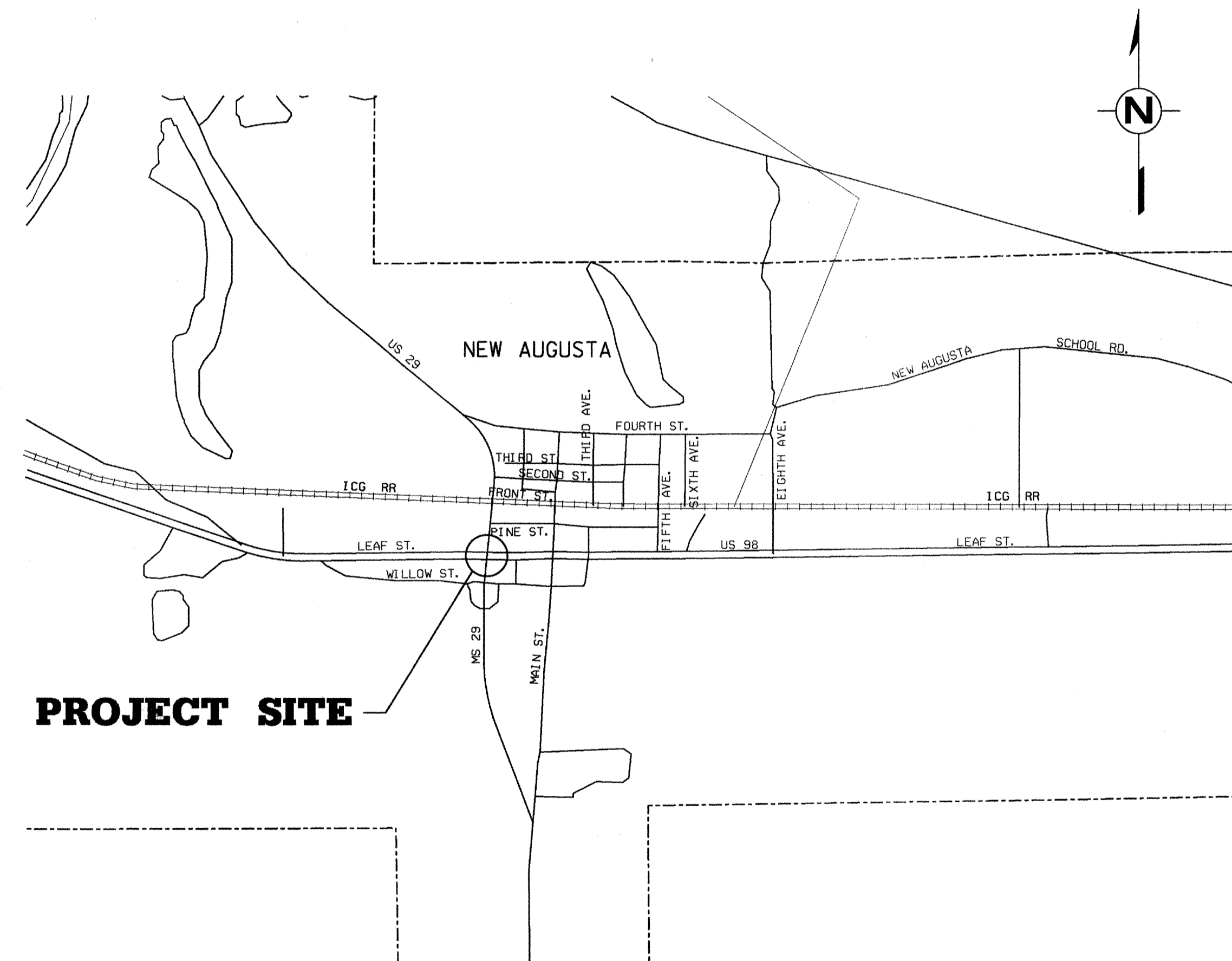
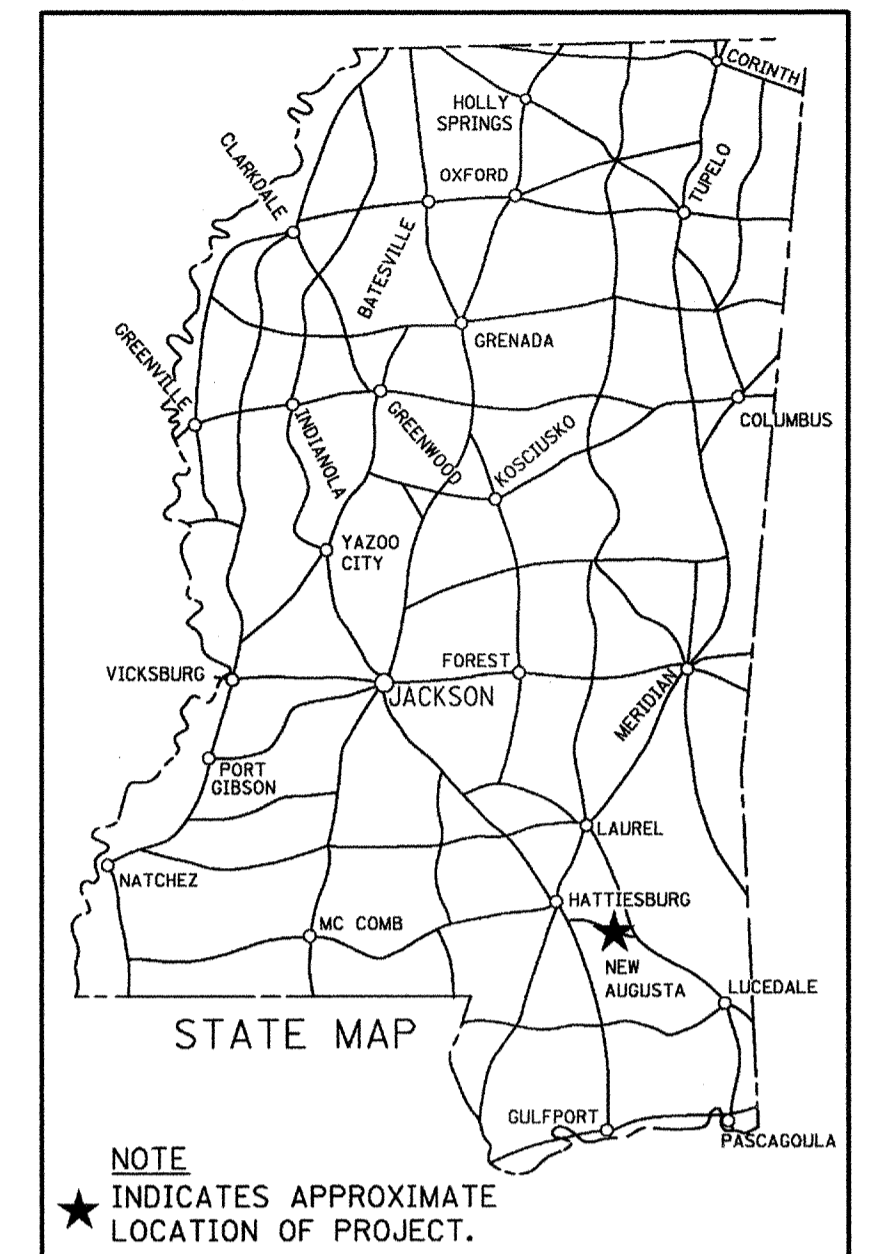
104892 /301000

U.S. 98 AT MS 29 - TRAFFIC SIGNAL

PERRY COUNTY

①12-19-07

SCALES
PLAN 1 IN. = 50 FT.
LAYOUT 1 IN. = 20 FT.



PROJECT SITE

CONVENTIONAL SYMBOLS

- COUNTY LINE
- TOWN CORPORATION LINE
- SECTION LINE
- EXISTING ROAD OR TRAVELED WAY
- PROPOSED ROAD OR TRAVELED WAY
- RAILROAD
- SURVEY LINE
- BRIDGES

DESIGN CONTROL

55 MPH = V (SPEED DESIGN)

ADT (2006) = 13,000 ; ADT (2011) = 14,000

DHV = 1100 ; D = 70 % T = 15 %

PERMITS ACQUIRED BY MDT

(NECESSARY FOR ULTIMATE IMPROVEMENTS ONLY):

	WATERS	WETLANDS
NATIONWIDE #14	N	N
NATIONWIDE (OTHER)*	N	N
GENERAL*	N	N
INDIVIDUAL (404)*	N	N

* ACQUISITION OF PERMITS FOR TEMPORARY IMPACTS DURING CONSTRUCTION ARE THE RESPONSIBILITY OF THE CONTRACTOR

STORMWATER PERMIT S

Y REQUIRED, CNDI SUBMITTED BY MDT (DISTRIBUTED AREA = 5 ACRES + INTB 6484)

S REQUIRED, SCNOI TO BE SUBMITTED BY CONTRACTOR (1 TO 4.99 ACRES) (INTB 6483)

N NO STORMWATER PERMIT REQUIRED (<1 ACRE)

APPROVED BY: *ATM* DATE: 12-19-07

12/11/2007 18:19:50 COVER, DGN

REVISIONS	DATE	BY	APPROVED:	DATE
			APPROVED: <i>Kamy Lee James</i> CHIEF ENGINEER DATE: 12/19/07	
			EXECUTIVE DIRECTOR DATE: 12-19-07	
			MISSISSIPPI DEPARTMENT OF TRANSPORTATION APPROVED: DIVISION ADMINISTRATOR DATE:	
			FEDERAL HIGHWAY ADMINISTRATION DEPARTMENT OF TRANSPORTATION	

1st O. REV.

STATE	PROJECT NO.
MISS.	HSIP-0014-03(061)

DESCRIPTION OF SHEET

WKG. NO. SH. NO.

DESCRIPTION OF SHEET	REVISION DATE	WKG. NO.	SH. NO.
TITLE SHEET		1	1
DETAILED INDEX (2)			
DETAILED INDEX		DI-1	2
GENERAL NOTES		GN-1	3
TYPICAL SECTION SHEETS (1)			
TYPICAL SECTIONS		TS-1	4
QUANTITY SHEETS (3)			
SUMMARY OF QUANTITIES		SQS-1	5
SUMMARY OF QUANTITIES		SQS-2	6
ESTIMATED QUANTITIES FOR TRAFFIC CONTROL SIGNS		TCP-Q	7
SPECIAL DESIGN SHEETS (20)			
ROADWAY PLAN		WK-1	8
ROADWAY PLAN		WK-2	9
SIGNAL PLAN		TSI-1	10
SIGNAL DETAILS		TSI-2	11
SIGNING AND MARKING PLAN		PMD-1	12
SIGNING AND MARKING PLAN		PMD-2	13
FORM GRADE PLAN		FG-1	14
FORM GRADE PLAN		FG-2	15
VEGETATION SCHEDULE		VS-1	16
BOX CULVERT AND JUNCTION BOX LAYOUT		A1 ØF 4	17
BOX CULVERT AND JUNCTION BOX DETAILS		A2 ØF 4	18
BOX CULVERT AND JUNCTION BOX DETAILS		A3 ØF 4	19
BOX CULVERT AND JUNCTION BOX DETAILS		A4 ØF 4	20
DETAIL OF TRAFFIC SIGNAL HEADS, TRAFFIC SIGNAL SIGNS, AND GENERAL NOTES		TSD-1	21
LOOP DETECTOR DETAILS FOR TRAFFIC SIGNAL INSTALLATION		TSD-2	22
PULL BOX AND CONDUIT TRENCHING DETAILS FOR TRAFFIC SIGNAL INSTALLATION		TSD-3	23
SPAN WIRE AND STEEL STRAIN POLE DETAIL FOR TRAFFIC SIGNAL INSTALLATION		TSD-4	24
TYPICAL DETAILS OF CONTROLLER CABINET MOUNTINGS, TYPE 1 POLE ATTACHMENTS AND MISCELLANEOUS DETAILS		TSD-5	25
MAST ARM AND PEDESTAL DETAILS FOR TRAFFIC SIGNAL INSTALLATION		TSD-6	26
TRAFFIC CONTROL PLAN (TRAFFIC SIGNAL INSTALLATION)		TSD-7	27
TRAFFIC CONTROL PLAN FOR POSTED SPEED LIMIT LESS THAN 65 MPH (EXTENDED PERIOD)		SDTCP-3	28

DESCRIPTION OF SHEET

WKG. NO. SH. NO.

DESCRIPTION OF SHEET	REVISION DATE	WKG. NO.	SH. NO.
STANDARD DRAWINGS (23)			
PAVEMENT MARKING DETAILS 2-LANE AND 4-LANE DIVIDED HIGHWAYS	12-01-99	PM-1	120
PAVEMENT MARKING LEGEND DETAILS		PM-6	125
EROSION CONTROL		EC-1	140
TYPICAL TEMPORARY EROSION CONTROL MEASURES		TEC-1	142
TYPICAL TEMPORARY EROSION CONTROL MEASURES		TEC-2	143
DETAILS OF DITCH TREATMENT		DT-1	145
STANDARD ROADSIDE SIGNS		SN-3A	223
STANDARD ROADSIDE SIGNS	3-01-02	SN-3B	224
STANDARD ROADSIDE SIGN ASSEMBLY AND INSTALLATION		SN-4	225
STANDARD ROADSIDE SIGN ASSEMBLY AND INSTALLATION		SN-4A	226
STANDARD ROADSIDE SIGN ASSEMBLY AND INSTALLATION		SN-4B	227
TRAFFIC CONTROL PLAN FOR POSTED SPEED LIMIT LESS THAN 65 MPH (WORK DAY ONLY)		TCP-2	251
HIGHWAY SIGN AND BARRICADE DETAILS FOR CONSTRUCTION PROJECTS		TCP-10	259
TRAFFIC CONTROL PLAN : UNEVEN PAVEMENT DETAILS		TCP-14	263
SUPERELEVATION TRANSITION CASE I (ROTATION ABOUT CENTERLINE)	3-01-02	SE-2A	276
DRIVEWAYS, CURB & GUTTER, & SIDEWALK		SD-1	287
PIPE CULVERT INSTALLATION		PI-1	300
TYPE 1 MEDIAN INLET (24" PIPE AND UNDER)	3-01-02	MI-1	306
DETAILS OF GRATES FOR MEDIAN INLETS		IG-1	314
PAVED INLET APRON AND MEDIAN DITCH PLUG		PA-1	318
STORM SEWER STRUCTURE TYPE SS-2		SS-2	322
STORM SEWER STRUCTURE, MANHOLE (PRECAST)		MH-1	326
TOTAL SHEETS (48)			

PLAN DIVISION MISSISSIPPI DEPARTMENT OF TRANSPORTATION

12/12/2007 08:32:25 I INDEX.DGN

SMALL BLUES PLANS - DATE 12/19/07		
FMS CON. = FMS 104892 301000		
REVISIONS		
DATE	SHEET NO.	BY
1-16-08	6	ATM

MISSISSIPPI DEPARTMENT OF TRANSPORTATION	
DETAILED INDEX	
PROJECT NO. HSIP-0014-03(061)	WORKING NUMBER DI-1
COUNTY : PERRY	SHEET NUMBER 2
FILENAME: INDEX.DGN	
DESIGN TEAM PTG	CHECKED REM DATE 11/20/07

GENERAL NOTES

- ① EXISTING UNDERGROUND UTILITY LINES ARE SHOWN ON THE DRAWINGS BASED UPON THE BEST INFORMATION AVAILABLE TO THE ENGINEER. THE ENGINEER CANNOT AND DOES NOT WARRANT THAT THIS INFORMATION IS COMPLETE OR ACCURATE. THE CONTRACTOR MUST COORDINATE DIRECTLY WITH THE INVOLVED UTILITY OWNERS TO HAVE UNDERGROUND UTILITY LINES FIELD LOCATED IN ADVANCE OF CONSTRUCTION.
- ② IT SHALL BE THE RESPONSIBILITY OF THE CONTRACTOR TO PROTECT EXISTING STRUCTURES SUCH AS PIPES, INLETS, APRONS, BRIDGES, ETC. FROM DAMAGE WHICH MIGHT OCCUR DURING CONSTRUCTION. EXTREME CARE SHALL BE EXERCISED IN UNDERCUT AREAS AND THE UNDERCUT DEPTH MAY BE ADJUSTED AT CROSS DRAINS, AS DIRECTED BY THE ENGINEER. THE CONTRACTOR SHALL REPLACE OR REPAIR, AS DIRECTED BY THE ENGINEER, ANY STRUCTURES DAMAGED DURING THE LIFE OF THE CONTRACT. NO PAYMENT WILL BE MADE FOR REPLACEMENT OR REPAIR OF DAMAGED ITEMS.
- ③ ALL PIPE JOINTS ARE TO BE WRAPPED IN TYPE V GEOTEXTILE FABRIC, 24" WIDTH. ALL PICKUP HOLES ARE TO BE PLUGGED AND COVERED WITH TYPE V GEOTEXTILE FABRIC TO THE SATISFACTION OF THE ENGINEER (NOT A SEPARATE PAY ITEM).
- ④ ALL BOX CULVERT JOINTS ARE TO BE WRAPPED IN TYPE V GEOTEXTILE FABRIC 6' WIDTH. (NOT A SEPARATE PAY ITEM).
- ⑤ FULL COLLARS ARE TO BE USED AT ALL BOX CULVERT EXTENSIONS AND AT ALL BOX CULVERT CONSTRUCTION JOINTS. (SEE ICJS-1 FOR DETAILS.)
- ⑥ WHERE MILLING OF THE ROADWAY LANES IS REQUIRED, THE CONTRACTOR SHALL PROVIDE OUTLETS IN THE EXISTING SHOULDERS AT SUFFICIENT INTERVALS TO PREVENT POOLING OR STANDING WATER ON THE MILLED SURFACE (NOT A SEPARATE PAY ITEM).
- ⑦ ALL TRAFFIC CONTROL DEVICES ON THIS PROJECT SHOULD COMPLY WITH PART VI OF THE MUTCD (LATEST EDITION).
- ⑧ ALL PLASTIC DRUMS SHALL HAVE A BALLASTING COLLAR MADE FROM RECYCLED TRUCK TIRES OR OTHER SUITABLE MATERIAL.
- ⑨ FLUORESCENT ORANGE SHEETING SHALL BE USED ON ALL CONSTRUCTION AND TRAFFIC CONTROL SIGNS EXCEPT FOR THOSE DESIGNATED IN PLANS TO BE BLACK LEGEND AND BORDER ON WHITE BACKGROUND.
- ⑩ THE CONTRACTOR IS TO REMOVE AND RESET ANY SIGNS WHICH CONFLICT WITH CONSTRUCTION (NOT A SEPARATE PAY ITEM).
- ⑪ THE LOCATION AND SPACING OF SIGNS SHOWN ON THE TRAFFIC CONTROL PLAN ARE APPROXIMATE AND MAY BE ADJUSTED AS NECESSARY TO FIT FIELD CONDITIONS.
- ⑪ ALL POST LENGTHS FOR SIGNS SHALL BE VERIFIED IN THE FIELD PRIOR TO FABRICATION.
- ⑫ THE EROSION CONTROL DEVICES REFERENCED IN THESE PLANS ARE A MINIMUM RESPONSIBILITY. IT IS THE RESPONSIBILITY OF THE CONTRACTOR TO INSURE THAT SILT DOES NOT LEAVE THE RIGHT OF WAY OR CONTAMINATE WATERS OF THE U.S. DURING CONSTRUCTION. THE CONTRACTOR SHALL SUBMIT AN EROSION CONTROL PLAN PRIOR TO COMMENCEMENT OF WORK AND MAINTAIN THE PLAN DURING CONSTRUCTION.
- ⑬ SEE SHEETS TSI-2 AND TSD-1 FOR TRAFFIC SIGNALIZATION NOTES.

PLAN 11/2007 18:20:59 GEN_NOTES.DGN MISSISSIPPI DEPARTMENT OF TRANSPORTATION

12/11/2007 18:20:59 GEN_NOTES.DGN

		MISSISSIPPI DEPARTMENT OF TRANSPORTATION	
		GENERAL NOTES	
		PROJECT NO. HSIP-0014-03(061)	WORKING NUMBER
		COUNTY: PERRY	GN-1
		FILENAME: GEN_NOTES.DGN	SHEET NUMBER
		DESIGN TEAM PTG CHECKED MJB DATE 11/20/07	3