

SECTION 905 -- PROPOSAL (CONTINUED)

I (We) further propose to execute the attached contract agreement (Section 902) as soon as the work is awarded to me (us), and to begin and complete the work within the time limit(s) provided for in the Specifications and Advertisement. I (We) also propose to execute the attached contract bond (Section 903) in an amount not less than one hundred (100) percent of the total of my (our) part, but also to guarantee the excellence of both workmanship and materials until the work is finally accepted.

I (We) enclose a certified check, cashier's check or bid bond for **five percent (5%) of total bid** and hereby agree that in case of my (our) failure to execute the contract and furnish bond within Ten (10) days after notice of award, the amount of this check (bid bond) will be forfeited to the State of Mississippi as liquidated damages arising out of my (our) failure to execute the contract as proposed. It is understood that in case I am (we are) not awarded the work, the check will be returned as provided in the Specifications.

Bidder acknowledges receipt of and has added to and made a part of the proposal and contract documents the following addendum (addenda):

ADDENDUM NO. 1 DATED 4/16/2014 ADDENDUM NO. DATED
 ADDENDUM NO. DATED ADDENDUM NO. DATED

Number	Description
1	Revise Table of Contents; Revise NTB No. 4773; Add NTB No. 5021; Revise Bid Items; Add or Revise Plan Sheet Nos. 8001, 8032; Amendment EBS Download Required.

TOTAL ADDENDA: 1
 (Must agree with total addenda issued prior to opening of bids)

Respectfully Submitted,

DATE _____

 Contractor

BY _____
 Signature

TITLE _____

ADDRESS _____

CITY, STATE, ZIP _____

PHONE _____

FAX _____

E-MAIL _____

(To be filled in if a corporation)

Our corporation is chartered under the Laws of the State of _____ and the names, titles and business addresses of the executives are as follows:

_____ President	_____ Address
_____ Secretary	_____ Address
_____ Treasurer	_____ Address

The following is my (our) itemized proposal.

Revised 09/21/2005

BR-0014-02(068) / 106437301

Marion County(ies)

MISSISSIPPI DEPARTMENT OF TRANSPORTATION

TABLE OF CONTENTS

PROJECT: BR-0014-02(068) / 106437301 – Marion County

901--Advertisement

904--Notice to Bidders: Governing Specifications - # 1
 Final Cleanup - # 3
 Quantity for Fillet Concrete - # 6
 Gopher Tortoises - # 151
 Fiber Reinforced Concrete - # 640
 Errata & Modifications to 2004 Standard Specifications - # 1405
 Railway-Highway Provision, w/ Supplement - # 1727
 Federal Bridge Formula - # 1928
 Status of ROW w/ attachments - # 2382
 Non-Quality Control / Quality Assurance Concrete - # 2818
 Reduced Speed Limit Signs - # 2937
 Alternate Asphalt Mixture Bid Items - # 3039
 Storm Water Discharge Associated With Construction Activities (≥ 1
 and ≤ 5 Acres) - # 3067
 Temporary Traffic Paint - # 3131
 Safety Edge - #3585
 Additional Erosion Control Requirements - #3612
 Type III Barricade Rails - #3655
 Petroleum Products Base Price - # 3893
 Questions Regarding Bidding - # 3980
 Stay-In-Place Metal Forms - # 4084
 Temporary Steel Bracing - # 4085
 Disadvantaged Business Enterprise, w/ Supplement - # 4103
 Rumble Stripe - # 4189
 Safety Apparel - # 4214
 Exposure to Moderate Sulfate Areas Below Ground Level - # 4301
 Terminal End Sections - # 4308
 Alternate Crushed Stone Base Bid Items - # 4473
 DBE Forms, Participation and Payment - # 4488
 Warm Mix Asphalt (WMA) - # 4524
 Electronic Addendum Process - # 4526
 Manual on Uniform Traffic Control Devices (MUTCD) - # 4565
 DUNS Requirement for Federal Funded Projects - # 4566
 Adjustments for Bituminous Materials - # 4612
 Payroll Requirement - # 4661
 Illinois Central Construction Requirements - # 4740
 Contract Time - # 4772
 Specialty Items - # 4773
 Placement of Fill Material in Federally Regulated Areas - # 4781
 Intermediate Diaphragms - # 4891
 Cooperation Between Contractors - # 4958
 Railroad Submittals - # 4959
 Pay Item Correction - # 5021

906- : Required Federal Contract Provisions -- FHWA 1273, w/ Supplements

907-101-4: Definitions

- CONTINUED ON NEXT PAGE -

Page 2 - PROJECT: BR-0014-02(068) / 106437301 – Marion County

- 907-102-10: Bidding Requirements and Conditions
- 907-103-8: Award and Execution of Contract
- 907-104-1: Partnering Process
- 907-104-5: Scope of Work
- 907-105-7: Control of Work
- 907-107-13: Legal Relations & Responsibility to Public, w/ Supplement
- 907-107-14: Contractor's Protection Plan, w/ Supplement
- 907-108-30: Prosecution and Progress
- 907-109-6: Measurement and Payment, w/ Supplement
- 907-110-2: Wage Rates
- 907-216-1: Solid Sodding
- 907-225-3: Grassing
- 907-226-2: Temporary Grassing
- 907-227-10: Hydroseeding
- 907-234-5: Siltation Barriers
- 907-237-4: Wattles
- 907-246-3: Sandbags & Rockbags
- 907-304-13: Granular Courses
- 907-401-2: Hot Mix Asphalt (HMA), w/ Supplement
- 907-401-6: Warm Mix Asphalt (WMA)
- 907-403-4: Hot Mix Asphalt (HMA), w/ Supplement
- 907-403-12: Warm Mix Asphalt (WMA)
- 907-407-1: Tack Coat
- 907-413-5: Sawing & Sealing Transverse Joints in Asphalt Pavement
- 907-603-8: Culverts & Storm Drains
- 907-618-9: Placement of Temporary Traffic Stripe
- 907-626-25: Thermoplastic Traffic Markings
- 907-699-5: Construction Stakes
- 907-701-4: Hydraulic Cement
- 907-702-3: Polyphosphoric Acid (PPA) Modification of Petroleum Asphalt Cement
- 907-703-11: Aggregates
- 907-707-4: Rubber Type Gaskets
- 907-707-5: Joint Material
- 907-708-6: Non-Metal Drainage Structures
- 907-709-1: Metal Pipe
- 907-710-1: Fast Dry Solvent Traffic Paint
- 907-711-4: Synthetic Structural Fiber Reinforcement
- 907-713-3: Admixtures for Concrete
- 907-714-8: Miscellaneous Materials
- 907-715-4: Roadside Development Materials
- 907-720-2: Pavement Marking Materials
- 907-803-5: Deep Foundations
- 907-804-13: Concrete Bridges and Structures, w/ Supplement
- 907-899-2: Railway-Highway Provisions, w/ Attachments

SECTION 905 - PROPOSAL, PROPOSAL BID ITEMS

COMBINATION BID PROPOSAL

CERTIFICATION OF PERFORMANCE - PRIOR FEDERAL-AID CONTRACTS

CERTIFICATION REGARDING NON-COLLUSION, DEBARMENT AND SUSPENSION

SECTION 902- CONTRACT FORM, AND SECTION 903 - CONTRACT BOND FORMS

PILE DRIVING FORM

FORM -- OCR-485

(REVISIONS TO THE ABOVE WILL BE INDICATED ON THE SECOND SHEET
OF SECTION 905 AS ADDENDA)

MISSISSIPPI DEPARTMENT OF TRANSPORTATION

SECTION 904 - NOTICE TO BIDDERS NO. 4773

DATE: 04/16/2014

SUBJECT: Specialty Items

PROJECT: BR-0014-02(068) / 106437301 - Marion County

Pursuant to the provisions of Section 108, the following work items are hereby designated as "Specialty Items" for this contract. Bidders are reminded that these items must be subcontracted in order to be considered as specialty items.

CATEGORY: EROSION CONTROL

Line No	Pay Item	Description
0120	213-C001	Superphosphate
0130	217-A001	Ditch Liner
0140	219-A001	Watering
0150	220-A001	Insect Pest Control
0160	221-A001	Portland Cement Concrete Paved Ditch
0170	223-A001	Mowing
0180	234-A001	Temporary Silt Fence
0190	236-A001	Silt Basin, Type A
0670	907-216-A001	Solid Sodding
0680	907-225-A001	Grassing
0690	907-225-B001	Agricultural Limestone
0700	907-225-C001	Mulch, Vegetative Mulch
0710	907-226-A001	Temporary Grassing
0720	907-234-D001	Inlet Siltation Guard
0730	907-237-A003	Wattles, 20"
0740	907-246-A001	Sandbags

CATEGORY: FENCE, GATES

Line No	Pay Item	Description
0980	607-B025	120" Type I Chain Link Fence, Class I

CATEGORY: GUARDRAIL, GUIDERAIL

Line No	Pay Item	Description
0270	606-B005	Guard Rail, Class A, Type 1, 'W' Beam
0280	606-B008	Guard Rail, Class A, Type 1, Thrie Beam
0290	606-B016	Guard Rail, Class A, Type 1, Thrie Beam, Transition Section, Steel Posts, Wood Blockouts
0300	606-D012	Guard Rail, Bridge End Section, Type I
0310	606-D020	Guard Rail, Bridge End Section, Type C Modified
0320	606-E002	Guard Rail, Terminal End Section, Flared
0330	606-E003	Guard Rail, Terminal End Section, Non-Flared

CATEGORY: PAVEMENT STRIPING AND MARKING

Line No	Pay Item	Description
0560	627-K001	Red-Clear Reflective High Performance Raised Markers
0790	907-626-A003	6" Thermoplastic Traffic Stripe, Skip White
0800	907-626-C003	6" Thermoplastic Double Drop Edge Stripe, Continuous White
0810	907-626-F003	6" Thermoplastic Double Drop Edge Stripe, Continuous Yellow
0820	907-626-G004	Thermoplastic Detail Stripe, White
0830	907-626-G005	Thermoplastic Detail Stripe, Yellow
0840	907-626-H004	Thermoplastic Legend, White
0850	907-626-H005	Thermoplastic Legend, White

CATEGORY: SURVEY AND STAKING

Line No	Pay Item	Description
0860	907-699-A002	Roadway Construction Stakes

CATEGORY: TRAFFIC CONTROL - PERMANENT

Line No	Pay Item	Description
0580	630-A001	Standard Roadside Signs, Sheet Aluminum, 0.080" Thickness
0582	630-A002	Standard Roadside Signs, Sheet Aluminum, 0.125" Thickness
0590	630-C004	Steel U-Section Posts, 3.0 to 3.5 lb/ft
0600	630-F005	Delineators, Flexible Post Mounted, Crossover, Type II
0610	630-G001	Type 3 Object Markers, OM-3R, Post Mounted
0620	630-G003	Type 3 Object Markers, OM-3L, Post Mounted
0630	635-A001	Vehicle Loop Assemblies

CATEGORY: TRAFFIC CONTROL - TEMPORARY

Line No	Pay Item	Description
0370	619-A2004	Temporary Traffic Stripe, Continuous Yellow, Paint
0380	619-A3006	Temporary Traffic Stripe, Skip White
0390	619-A5002	Temporary Traffic Stripe, Detail, Paint
0400	619-A5005	Temporary Traffic Stripe, Detail, Type 2 Tape
0410	619-A6002	Temporary Traffic Stripe, Legend
0420	619-C7001	Two-Way Yellow Reflective High Performance Raised Marker
0430	619-D1001	Standard Roadside Construction Signs, Less than 10 Square Feet
0450	619-E1001	Flashing Arrow Panel, Type C
0460	619-F1001	Concrete Median Barrier, Precast
0470	619-F1002	Portable Median Barrier
0480	619-F3003	Delineators, Guard Rail, Yellow
0490	619-F3004	Delineators, Guard Rail, White
0500	619-G4001	Barricades, Type III, Single Faced
0502	619-G4004	Barricades, Type III, Single Faced, Permanent, Red/White
0510	619-G4005	Barricades, Type III, Double Faced
0520	619-G8001	Warning Lights, Type "C"
0530	619-J1002	Impact Attenuator, 50 MPH

CATEGORY: TRAFFIC CONTROL - TEMPORARY

Line No	Pay Item	Description
0540	619-J2004	Impact Attenuator, 50 MPH, Replacement Package

MISSISSIPPI DEPARTMENT OF TRANSPORTATION

SECTION 904 - NOTICE TO BIDDERS NO. 5021

CODE: (SP)

DATE: 4/14/2014

SUBJECT: Pay Item Correction

PROJECT: BR-0014-02(068) / 106437301 – Marion County

The Bidder's attention is called to the Summary of Quantities in the Contract Plans. Pay Item 629-A002, Vehicle Impact Attenuator, 60 MPH, is in error. The correct Pay Item is 630-A002, Standard Roadside Signs, Sheet Aluminum, 0.125" Thickness. The Bid Sheets have been corrected to reflect this change.

Also, The Bidder is hereby advised that the pay item number and description for 619-D2002 (Standard Roadside Construction Signs, 10 Square Feet or More, Permanent) as shown in the plans is incorrect. The correct pay item number and description to be used on the project is 619-D2001 (Standard Roadside Construction Signs, 10 Square Feet or More) and has been corrected in the Proposal bid items.

The bidder is further advised that pay item 619-G4004 (Barricades, Type III, Single Faced, Permanent, Red/White) is not included in the plan summary of quantities but has been added to the Proposal bid items.

Bridge Replacement on US 98 over Silver Creek, known as Federal Aid Project No. BR-0014-02(068) / 106437301 in Marion County.

Line No.	Item Code	Adj Code	Quantity	Units	Description [Fixed Unit Price]
Roadway Items					
0010	201-B001		2	Acre	Clearing and Grubbing
0020	202-B005		12,397	Square Yard	Removal of Asphalt Pavement, All Depths
0030	202-B009		2	Each	Removal of Bridge
0040	202-B025		604	Square Yard	Removal of Concrete Paved Ditch
0050	202-B070		20	Each	Removal of Sign Including Post & Footing
0060	202-B076		5,845	Linear Feet	Removal of Traffic Stripe
0070	202-B087		1,800	Linear Feet	Removal of Guard Rail, Including Rails, Posts and Terminal Ends
0080	202-B097		267	Square Yard	Removal of Concrete Overlaid w/ Asphalt Pavement, All Depths
0090	202-B150		8	Each	Removal of Object Markers
0100	203-EX035	(E)	25,811	Cubic Yard	Borrow Excavation, AH, FME, Class B9-6
0110	211-A001		12,100	Square Yard	Topsoil for Slope Treatment, From Right-of-Way
0120	213-C001		2	Ton	Superphosphate
0130	217-A001		2,378	Square Yard	Ditch Liner
0140	219-A001		265	Thousand Gallon	Watering [\$20.00]
0150	220-A001		4	Acre	Insect Pest Control [\$30.00]
0160	221-A001	(S)	152	Cubic Yard	Portland Cement Concrete Paved Ditch
0170	223-A001		4	Acre	Mowing [\$50.00]
0180	234-A001		8,406	Linear Feet	Temporary Silt Fence
0190	236-A001		4	Each	Silt Basin, Type A
0200	406-A001		1,867	Square Yard	Cold Milling of Bituminous Pavement, All Depths
0210	423-A001		4	Mile	Rumble Strips, Ground In
0220	501-E001		94	Linear Feet	Expansion Joints, Without Dowels
0230	502-A001	(C)	184	Square Yard	Reinforced Cement Concrete Bridge End Pavement
0240	503-C007		48	Linear Feet	Saw Cut, Full Depth
0250	603-CA088	(S)	880	Linear Feet	18" Reinforced Concrete Pipe, Class III, Rubber Type Gaskets
0260	605-AA005	(S)	13,933	Square Yard	Geotextile for Subsurface Drainage, Type V, Non-Woven
0270	606-B005		1,338	Linear Feet	Guard Rail, Class A, Type 1, 'W' Beam
0280	606-B008		100	Linear Feet	Guard Rail, Class A, Type 1, Thrie Beam
0290	606-B016		4	Linear Feet	Guard Rail, Class A, Type 1, Thrie Beam, Transition Section, Steel Posts, Wood Blockouts
0300	606-D012		5	Each	Guard Rail, Bridge End Section, Type I
0310	606-D020		2	Each	Guard Rail, Bridge End Section, Type C Modified
0320	606-E002		7	Each	Guard Rail, Terminal End Section, Flared

Line No.	Item Code	Adj Code	Quantity	Units	Description [Fixed Unit Price]
0330	606-E003		4	Each	Guard Rail, Terminal End Section, Non-Flared
0340	615-A015	(S)	40	Linear Feet	Concrete Bridge End Barrier, 32"
0350	618-A001		1	Lump Sum	Maintenance of Traffic
0360	619-A1004		4	Mile	Temporary Traffic Stripe, Continuous White, Paint
0370	619-A2004		3	Mile	Temporary Traffic Stripe, Continuous Yellow, Paint
0380	619-A3006		4	Mile	Temporary Traffic Stripe, Skip White
0390	619-A5002		24,204	Linear Feet	Temporary Traffic Stripe, Detail, Paint
0400	619-A5005		5,778	Linear Feet	Temporary Traffic Stripe, Detail, Type 2 Tape
0410	619-A6002		263	Square Feet	Temporary Traffic Stripe, Legend
0420	619-C7001		96	Each	Two-Way Yellow Reflective High Performance Raised Marker
0430	619-D1001		223	Square Feet	Standard Roadside Construction Signs, Less than 10 Square Feet
0432	619-D2001		1,928	Square Feet	Standard Roadside Construction Signs, 10 Square Feet or More
	Added 04/16/0014				
0440	619-D2002				Deleted 04/16/0014
	Deleted 04/16/0014				
0450	619-E1001		4	Each	Flashing Arrow Panel, Type C
0460	619-F1001		560	Linear Feet	Concrete Median Barrier, Precast
0470	619-F1002		8,221	Linear Feet	Portable Median Barrier
0480	619-F3003		35	Each	Delineators, Guard Rail, Yellow
0490	619-F3004		24	Each	Delineators, Guard Rail, White
0500	619-G4001		216	Linear Feet	Barricades, Type III, Single Faced
0502	619-G4004		48	Linear Feet	Barricades, Type III, Single Faced, Permanent, Red/White
	Added 04/16/0014				
0510	619-G4005		102	Linear Feet	Barricades, Type III, Double Faced
0520	619-G8001		38	Each	Warning Lights, Type "C"
0530	619-J1002		5	Unit	Impact Attenuator, 50 MPH
0540	619-J2004		1	Unit	Impact Attenuator, 50 MPH, Replacement Package
0550	620-A001		1	Lump Sum	Mobilization
0560	627-K001		461	Each	Red-Clear Reflective High Performance Raised Markers
0570	629-A002				Deleted 04/16/0014
	Deleted 04/16/0014				
0580	630-A001		89	Square Feet	Standard Roadside Signs, Sheet Aluminum, 0.080" Thickness
0582	630-A002		153	Square Feet	Standard Roadside Signs, Sheet Aluminum, 0.125" Thickness
	Added 04/16/0014				
0590	630-C004		302	Linear Feet	Steel U-Section Posts, 3.0 to 3.5 lb/ft

Line No.	Item Code	Adj Code	Quantity	Units	Description [Fixed Unit Price]
0600	630-F005		20	Each	Delineators, Flexible Post Mounted, Crossover, Type II
0610	630-G001		4	Each	Type 3 Object Markers, OM-3R, Post Mounted
0620	630-G003		4	Each	Type 3 Object Markers, OM-3L, Post Mounted
0630	635-A001		956	Linear Feet	Vehicle Loop Assemblies
0640	809-A003	(S)	10,236	Square Feet	Retaining Wall System
0650	815-A009	(S)	5	Ton	Loose Riprap, Size 300
0660	815-F002	(S)	2	Ton	Sediment Control Stone
0670	907-216-A001		13,251	Square Yard	Solid Sodding
0680	907-225-A001		4	Acre	Grassing
0690	907-225-B001		8	Ton	Agricultural Limestone
0700	907-225-C001		8	Ton	Mulch, Vegetative Mulch
0710	907-226-A001		4	Acre	Temporary Grassing
0720	907-234-D001		2	Each	Inlet Siltation Guard
0730	907-237-A003		312	Linear Feet	Wattles, 20"
0740	907-246-A001		30	Linear Feet	Sandbags
0750	907-304-A004	(GY)	4,794	Cubic Yard	Granular Material, LVM, Class 6, Group C
0760	907-407-A001	(A2)	4,655	Gallon	Asphalt for Tack Coat
0770	907-413-E001		2,472	Linear Feet	Sawing and Sealing Transverse Joints in Asphalt Pavement
0780	907-603-ALT01	(S)	80	Linear Feet	18" Type A Alternate Pipe
0790	907-626-A003		4	Mile	6" Thermoplastic Traffic Stripe, Skip White
0800	907-626-C003		3	Mile	6" Thermoplastic Double Drop Edge Stripe, Continuous White
0810	907-626-F003		2	Mile	6" Thermoplastic Double Drop Edge Stripe, Continuous Yellow
0820	907-626-G004		9,639	Linear Feet	Thermoplastic Detail Stripe, White
0830	907-626-G005		6,339	Linear Feet	Thermoplastic Detail Stripe, Yellow
0840	907-626-H004		1,895	Linear Feet	Thermoplastic Legend, White
0850	907-626-H005		263	Square Feet	Thermoplastic Legend, White
0860	907-699-A002		1	Lump Sum	Roadway Construction Stakes
0870	907-899-A001		1	Lump Sum	Railway-Highway Provisions
ALTERNATE GROUP AA NUMBER 1					
0880	907-304-F002	(GT)	2,831	Ton	Size 610 Crushed Stone Base
ALTERNATE GROUP AA NUMBER 2					
0890	907-304-F003	(GT)	2,831	Ton	3/4" and Down Crushed Stone Base
ALTERNATE GROUP AA NUMBER 3					
0900	907-304-F004	(GT)	2,831	Ton	Size 825B Crushed Stone Base
ALTERNATE GROUP BB NUMBER 1					

Line No.	Item Code	Adj Code	Quantity	Units	Description [Fixed Unit Price]
0910	907-403-A002	(BA1)	5,113	Ton	Hot Mix Asphalt, HT, 19-mm mixture ALTERNATE GROUP BB NUMBER 2
0920	907-403-M011	(BA1)	5,113	Ton	Warm Mix Asphalt, HT, 19-mm mixture ALTERNATE GROUP CC NUMBER 1
0930	907-403-A005	(BA1)	6,353	Ton	Hot Mix Asphalt, HT, 9.5-mm mixture ALTERNATE GROUP CC NUMBER 2
0940	907-403-M009	(BA1)	6,353	Ton	Warm Mix Asphalt, HT, 9.5-mm mixture ALTERNATE GROUP DD NUMBER 1
0950	907-403-A015	(BA1)	1,315	Ton	Hot Mix Asphalt, ST, 9.5-mm mixture ALTERNATE GROUP DD NUMBER 2
0960	907-403-M001	(BA1)	1,315	Ton	Warm Mix Asphalt, ST, 9.5-mm mixture Bridge Items
0970	501-K001		2,112	Square Yard	Transverse Grooving
0980	607-B025		220	Linear Feet	120" Type I Chain Link Fence, Class I
0990	803-C003	(S)	2,210	Linear Feet	16" x 16" Prestressed Concrete Piling
1000	803-I001	(S)	2	Each	PDA Test Pile
1010	803-J001	(S)	2	Each	Pile Restrike
1020	803-N001	(S)	75	Linear Feet	Exploration
1030	803-O009	(S)	540	Linear Feet	Temporary Casing, 54" Diameter
1040	805-A001	(S)	250,147	Pounds	Reinforcement
1050	813-A002	(S)	1,061	Linear Feet	Concrete Railing, 32"
1060	815-A009	(S)	615	Ton	Loose Riprap, Size 300
1070	815-D001	(S)	97	Cubic Yard	Concrete Slope Paving
1080	815-E001	(S)	973	Square Yard	Geotextile under Riprap
1090	907-803-K003	(S)	900	Linear Feet	Drilled Shaft, 54" Diameter
1100	907-803-L005	(S)	1	Each	Test Shaft, 54" Diameter
1110	907-803-M003	(S)	75	Linear Feet	Trial Shaft, 54" Diameter
1120	907-804-A001	(S)	1,095	Cubic Yard	Bridge Concrete, Class AA
1130	907-804-C259	(S)	535	Linear Feet	90' Prestressed Concrete Beam, Type BT-54
1140	907-804-C260	(S)	1,302	Linear Feet	109' Prestressed Concrete Beam, Type BT-54
1150	907-804-C261	(S)	1,310	Linear Feet	110' Prestressed Concrete Beam, Type BT-54

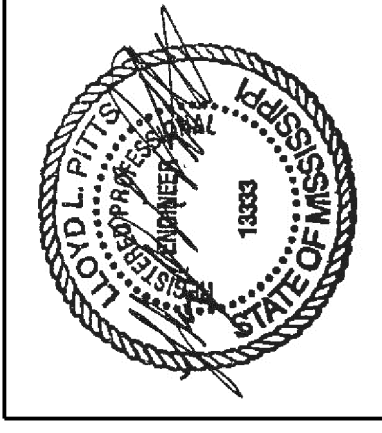
ADDENDUM

STATE PROJECT NO.
MISS. BR-0014-02(068)

DESCRIPTION OF SHEETS SPECIAL DESIGN SHEETS ~ BRIDGE DRAWINGS	WORKING NUMBER	SHEET NUMBER
DETAILED INDEX (BRIDGE)	DI-BR	8001
SUMMARY OF QUANTITIES (BRIDGE)	SO-BR	8002
ESTIMATED QUANTITIES (BRIDGE)	EO-BR	8003
OVERPASS AT STATION 947+69.88		
U.S. 98 OVER SILVER CREEK & ICRC R/R (GENERAL NOTES)	1 OF 32	8004
U.S. 98 OVER SILVER CREEK & ICRC R/R (LAYOUT)	2 OF 32	8005
U.S. 98 OVER SILVER CREEK & ICRC R/R (FOUNDATION)	3 OF 32	8006
GENERALIZED SOIL PROFILE	4 OF 32	8007
END BENT NO. 1 DETAILS (SHEET 1 OF 2)	5 OF 32	8008
END BENT NO. 1 DETAILS (SHEET 2 OF 2)	6 OF 32	8009
END BENT NO. 6 DETAILS (SHEET 1 OF 2)	7 OF 32	8010
END BENT NO. 6 DETAILS (SHEET 2 OF 2)	8 OF 32	8011
INTERMEDIATE BENT NOS. 2, 3, 4 & 5 DETAILS	9 OF 32	8012
INTERMEDIATE BENT DETAILS	10 OF 32	8013
109 FT. SPAN NO. 1 DETAILS (SHEET 1 OF 2)	11 OF 32	8014
109 FT. SPAN NO. 1 DETAILS (SHEET 2 OF 2)	12 OF 32	8015
90 FT. SPAN NO. 2 DETAILS (SHEET 1 OF 2)	13 OF 32	8016
90 FT. SPAN NO. 2 DETAILS (SHEET 2 OF 2)	14 OF 32	8017
110 FT. SPAN NO. 3 DETAILS (SHEET 1 OF 2)	15 OF 32	8018
110 FT. SPAN NO. 3 DETAILS (SHEET 2 OF 2)	16 OF 32	8019
110 FT. SPAN NO. 4 DETAILS (SHEET 1 OF 2)	17 OF 32	8020
110 FT. SPAN NO. 4 DETAILS (SHEET 2 OF 2)	18 OF 32	8021
109 FT. SPAN NO. 5 DETAILS (SHEET 1 OF 2)	19 OF 32	8022
109 FT. SPAN NO. 5 DETAILS (SHEET 2 OF 2)	20 OF 32	8023
SPAN DETAILS (SHEET 1 OF 2)	21 OF 32	8024
SPAN DETAILS (SHEET 2 OF 2)	22 OF 32	8025
MISCELLANEOUS SPAN DETAILS	23 OF 32	8026
RAILING DETAILS	24 OF 32	8027
90 FT. BEAM DETAILS (TYPE BT-5A)	25 OF 32	8028
109 FT. BEAM "A" DETAILS (TYPE BT-5A)	26 OF 32	8029
109 FT. BEAM "B" DETAILS (TYPE BT-5A)	27 OF 32	8030
110 FT. BEAM DETAILS (TYPE BT-5A)	28 OF 32	8031
PAD DETAILS	29 OF 32	8032
PRESTRESSED CONCRETE PILE DETAILS	30 OF 32	8033
SAFETY FENCE	31 OF 32	8034
TRIAL SHAFT AND LOAD TEST DETAIL	32 OF 32	8035
EROSION CONTROL PLAN	ECP-BR1	8036
EROSION CONTROL PLAN	ECP-BR2	8037

INFORMATION DRAWINGS	WORKING NUMBER	SHEET NUMBER
EXISTING BRIDGE AT STA. 947+66.25	F.A.G.H.-92 A (6)	8038

BRIDGE DIVISION		
REVISIONS		
DATE	SHEET NO.	BY
4/9/14	8032	L.M.O.



MISSISSIPPI DEPARTMENT OF TRANSPORTATION
OVERPASS AT STA. 947+69.88

DETAILED INDEX
(BRIDGE)

PROJECT 106437/301000
BR-0014-02(068)

MARION COUNTY

DESIGNER: F.F.T. SM.S. / F.F.T. SM.S. / F.F.T. SM.S.
CHECKER: F.F.T. SM.S. / F.F.T. SM.S. / F.F.T. SM.S.
DATE: F.F.T. SM.S. / F.F.T. SM.S. / F.F.T. SM.S.

DEPARTMENT OF STRUCTURES, STATE BRIDGE ENGINEER: JUSTIN WALKER, P.E.
DEPARTMENT OF STRUCTURES, ASSIST. STATE BRIDGE ENGINEER: JUSTIN WALKER, P.E.

WORKING NUMBER: DI-BR
SHEET NUMBER: 8001

ADDENDUM

STATE PROJECT NO.
MISS. BR-0014-02(068)

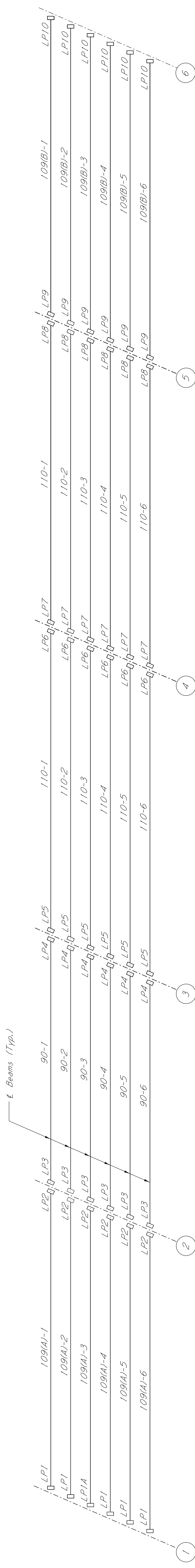
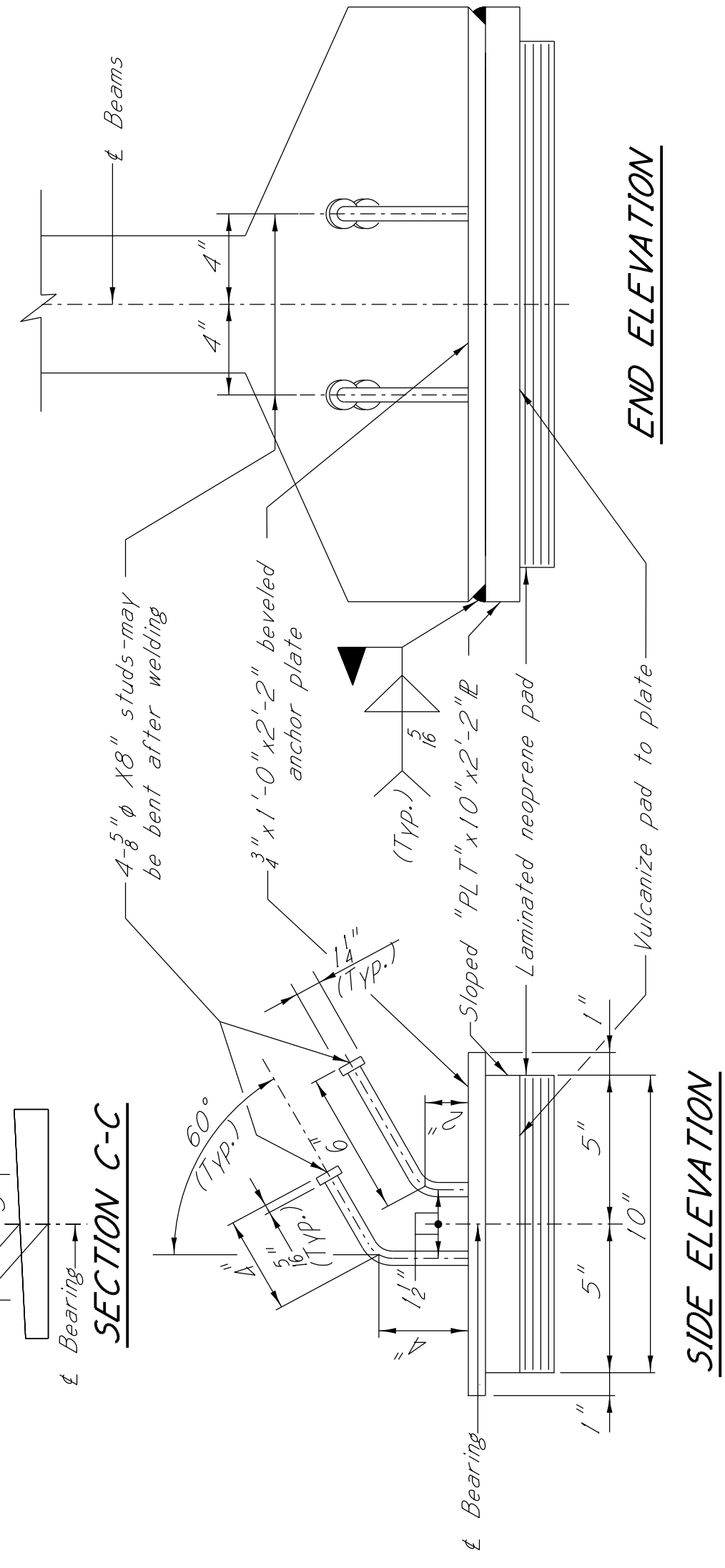
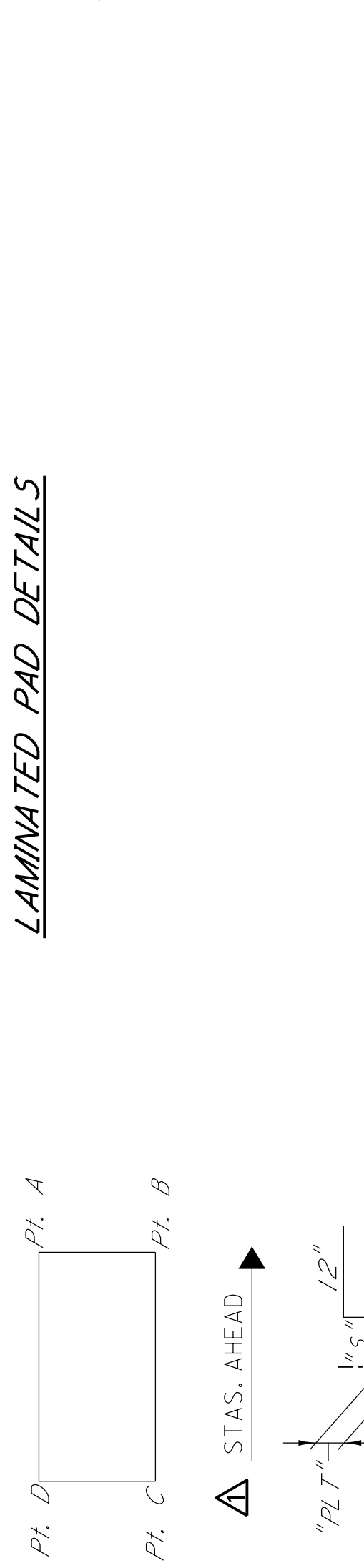


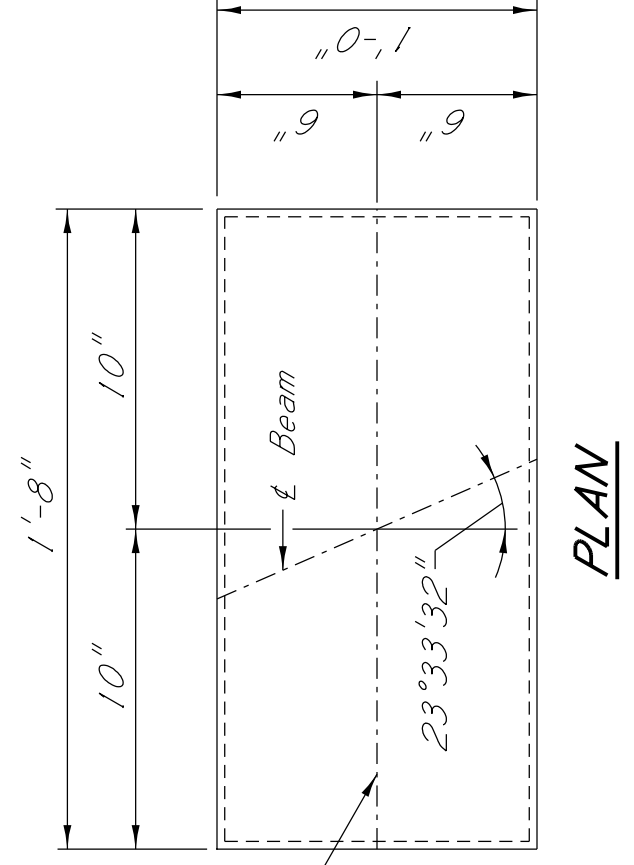
PLATE THICKNESS & SLOPE TABLE

Pad No.	Thickness "PLT"	Slope "S"	Number Of Each	Thickness Point A	Thickness Point B	Thickness Point C	Thickness Point D
LP1	1"	+3/8"	5	1 1/8"	1 1/8"	5/8"	1 1/8"
LP1A	1 1/8"	+3/8"	1	1 1/4"	1 1/4"	1 1/8"	1 1/8"
LP2	1"	+3/8"	6	1 3/8"	1"	1 3/8"	1"
LP3	1 1/8"	0	6	1 5/8"	1 5/8"	1 1/8"	1 5/8"
LP4	1"	0	6	1"	1"	1"	1"
LP5	1"	0	6	1"	1"	1"	1"
LP6	1 1/8"	0	6	1 3/8"	1 3/8"	1 3/8"	1 1/8"
LP7	1"	-1/8"	6	1 1/8"	1"	7/8"	1"
LP8	1 1/2"	-1/8"	6	1 5/8"	1 1/2"	1 3/8"	1 1/2"
LP9	1"	-1/4"	6	1 1/4"	1"	3/4"	1"
LP10	1"	-1/4"	6	1 1/8"	1 1/8"	7/8"	1"

LAMINATED PAD DETAILS



BEARING ASSEMBLY (BAI) DETAILS ~ LP1, LP1A & LP10

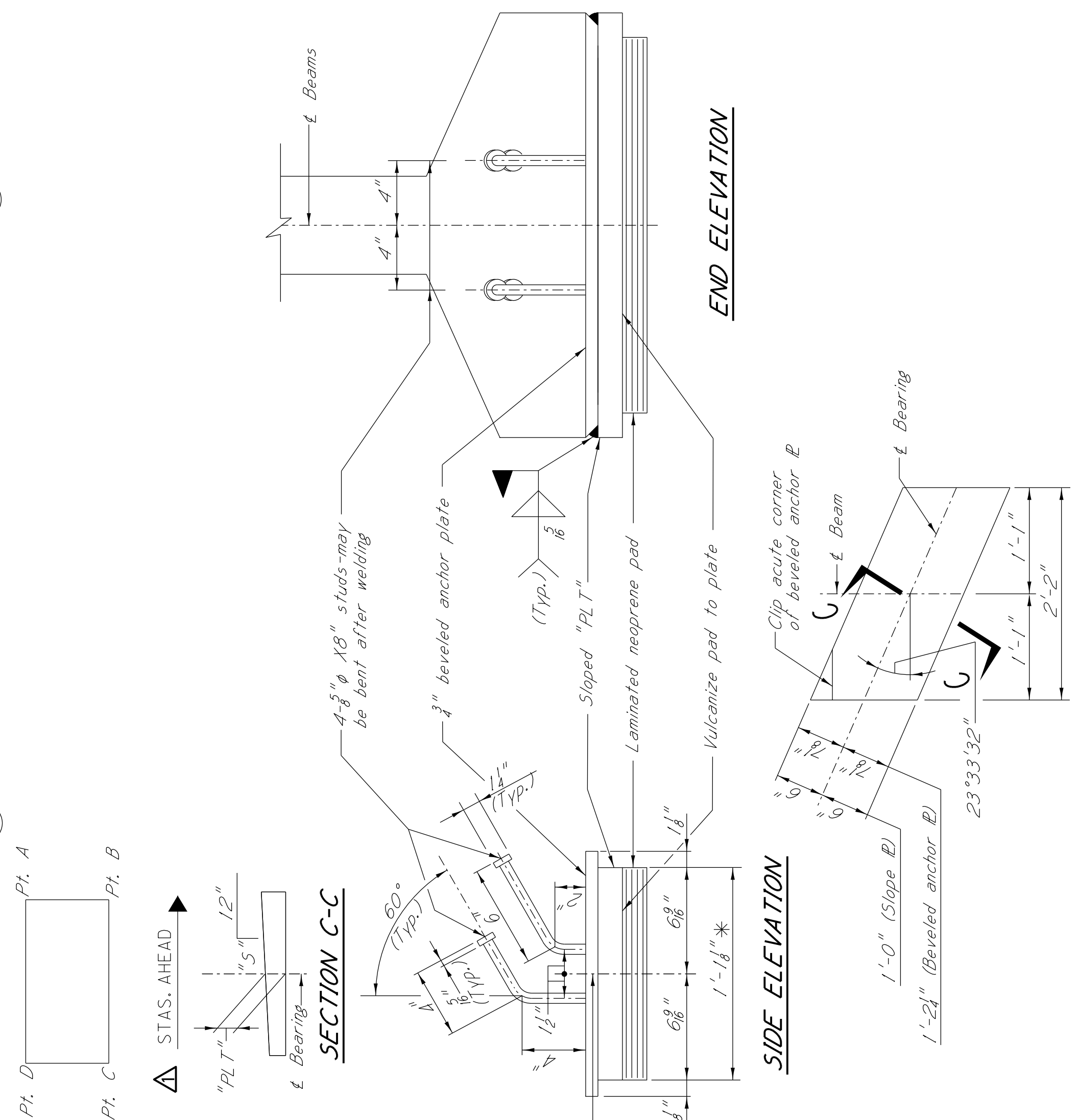


LAMINATED PAD DETAILS ~ LP2 THRU LP9

Testing acceptance procedure shall be in accordance with Section 714.10.6 of the specifications. Elastomer shall have a hardness of 50 durometer with a minimum shear modulus at 73° F of 0.095 k.s.i. and a maximum shear modulus at 73° F of 0.130 k.s.i. Bearing area on top of cap shall be cast smooth and true to grade.

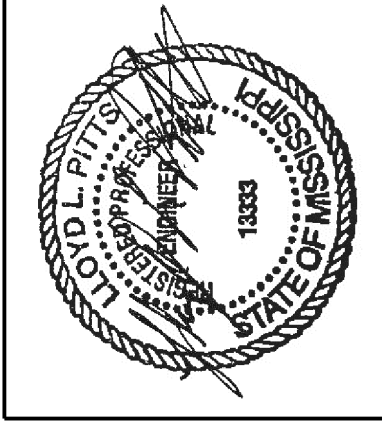
LAMINATED PAD DETAILS ~ LP1, LP1A & LP10

Testing acceptance procedure shall be in accordance with Section 714.10.6 of the specifications. Elastomer shall have a hardness of 50 durometer with a minimum shear modulus at 73° F of 0.095 k.s.i. and a maximum shear modulus at 73° F of 0.130 k.s.i. Bearing area on top of cap shall be cast smooth and true to grade.



SLOPE & BEVELED ANCHOR PLATE BEARING ASSEMBLY (BAI) DETAILS ~ LP2 THRU LP9

* Dimensions are along beam



MISSISSIPPI DEPARTMENT OF TRANSPORTATION
OVERPASS AT STA. 947+69.88

PROJECT 106437/301000
BR-0014-02(068)

MARION COUNTY

PAD DETAILS

WORKING NUMBER 29 of 32
SHEET NUMBER 8032

DESIGNER: J. WALKER
CHECKER: J. WALKER
DATE: 4/9/14
ISSUE DATE: 11/13/13
STATE BRIDGE ENGINEER: JUSTIN WALKER, P.E.
DEP. DIRECTOR OF STRUCTURES, ASSIST. STATE BRIDGE ENGINEER