

SECTION 905 -- PROPOSAL (CONTINUED)

I (We) further propose to execute the attached contract agreement (Section 902) as soon as the work is awarded to me (us), and to begin and complete the work within the time limit(s) provided for in the Specifications and Advertisement. I (We) also propose to execute the attached contract bond (Section 903) in an amount not less than one hundred (100) percent of the total of my (our) part, but also to guarantee the excellence of both workmanship and materials until the work is finally accepted.

I (We) enclose a certified check, cashier's check or bid bond for **five percent (5%) of total bid** and hereby agree that in case of my (our) failure to execute the contract and furnish bond within Ten (10) days after notice of award, the amount of this check (bid bond) will be forfeited to the State of Mississippi as liquidated damages arising out of my (our) failure to execute the contract as proposed. It is understood that in case I am (we are) not awarded the work, the check will be returned as provided in the Specifications.

Bidder acknowledges receipt of and has added to and made a part of the proposal and contract documents the following addendum (addenda):

ADDENDUM NO. 1 DATED 4/2/2014 ADDENDUM NO. DATED
 ADDENDUM NO. 2 DATED 4/16/2014 ADDENDUM NO. DATED

Number	Description
1	Revise Bid Items; Amendment EBS Download Required.
2	Revise Table of Contents; Revise NTB No. 4955; Add NTB Nos. 5025, 5027, & 5028; Revise Bid Items; Revise or Added Plan Sheet Nos. 2-3, 10, 15, 65, 6300-6301, 6329; Amendment EBS Download Required.

TOTAL ADDENDA: 2
 (Must agree with total addenda issued prior to opening of bids)

Respectfully Submitted,

DATE _____

_____ Contractor

BY _____ Signature

TITLE _____

ADDRESS _____

CITY, STATE, ZIP _____

PHONE _____

FAX _____

E-MAIL _____

(To be filled in if a corporation)

Our corporation is chartered under the Laws of the State of _____ and the names, titles and business addresses of the executives are as follows:

_____	President	Address
_____	Secretary	Address
_____	Treasurer	Address

The following is my (our) itemized proposal.

IM-0020-01(212) / 106651301 & 302 Hinds County(ies)

MISSISSIPPI DEPARTMENT OF TRANSPORTATION

TABLE OF CONTENTS

PROJECT: IM-0020-01(212) / 106651301& 302 – Hinds County

901--Advertisement

904--Notice to Bidders:

- Governing Specifications - # 1
- Final Cleanup - # 3
- Fiber Reinforced Concrete - # 640
- Errata & Modifications to 2004 Standard Specifications - # 1405
- Federal Bridge Formula - # 1928
- Status of ROW w/ attachments - # 2382
- Non-Quality Control / Quality Assurance Concrete - # 2818
- Reduced Speed Limit Signs - # 2937
- Alternate Asphalt Mixture Bid Items - # 3039
- Storm Water Discharge Associated With Construction Activities (≥ 1 and ≤ 5 Acres) - # 3067
- Temporary Traffic Paint - # 3131
- Additional Erosion Control Requirements - #3612
- Type III Barricade Rails - #3655
- Petroleum Products Base Price - # 3893
- Questions Regarding Bidding - # 3980
- Disadvantaged Business Enterprise, w/ Supplement - # 4103
- Rumble Stripe - # 4189
- Safety Apparel - # 4214
- Terminal End Sections - # 4308
- Alternate Crushed Stone Base Bid Items - # 4473
- DBE Forms, Participation and Payment - # 4488
- Warm Mix Asphalt (WMA) - # 4524
- Electronic Addendum Process - # 4526
- Manual on Uniform Traffic Control Devices (MUTCD) - # 4565
- DUNS Requirement for Federal Funded Projects - # 4566
- Adjustments for Bituminous Materials - # 4612
- Payroll Requirement - # 4661
- Contract Time - # 4934
- Specialty Items - # 4935
- Lane Closure Restrictions - # 4955
- Portable Construction Lighting - # 4969
- Emergency Support System - # 4970
- Restoration of Channels - # 4971
- Solid Sodding - # 4972
- Pay Item Correction - # 4974
- Restrictions on Replacement of Concrete Pavement - # 5025
- Plan General Note Correction - # 5027
- Pay Item Correction - # 5028

906- : Required Federal Contract Provisions -- FHWA 1273, w/ Supplements

907-101-4: Definitions

907-102-10: Bidding Requirements and Conditions

907-103-8: Award and Execution of Contract

907-104-1: Partnering Process

907-104-5: Scope of Work

907-105-7: Control of Work

907-107-13: Legal Relations & Responsibility to Public

- CONTINUED ON NEXT PAGE -

Page 2 - PROJECT: IM-0020-01(212) / 106651301& 302 – Hinds County

- 907-107-14: Contractor's Protection Plan, w/ Supplement
- 907-108-30: Prosecution and Progress
- 907-109-6: Measurement and Payment, w/ Supplement
- 907-110-2: Wage Rates
- 907-216-1: Solid Sodding
- 907-225-3: Grassing
- 907-226-2: Temporary Grassing
- 907-227-10: Hydroseeding
- 907-230-10: Tree and Shrub Planting
- 907-233-1: Tree Bark Mulch
- 907-237-4: Wattles
- 907-245-2: Triangular Silt Dikes
- 907-246-3: Sandbags & Rockbags
- 907-249-1: Riprap for Erosion Control
- 907-282-11: Irrigation System
- 907-304-13: Granular Courses
- 907-401-2: Hot Mix Asphalt (HMA), w/Supplement
- 907-401-6: Warm Mix Asphalt (WMA)
- 907-403-4: Hot Mix Asphalt (HMA), w/Supplement
- 907-403-12: Warm Mix Asphalt (WMA)
- 907-407-1: Tack Coat
- 907-503-2: Replacement of Concrete Pavement
- 907-512-4: Grout Mix
- 907-618-9: Placement of Temporary Traffic Stripe
- 907-619-5: Changeable Message Signs
- 907-619-6: Impact Attenuators
- 907-626-25: Thermoplastic Traffic Markings
- 907-680-1: Portable Construction Lighting
- 907-699-5: Construction Stakes
- 907-701-4: Hydraulic Cement
- 907-702-3: Polyphosphoric Acid (PPA) Modification of Petroleum Asphalt Cement
- 907-703-11: Aggregates
- 907-708-6: Non-Metal Drainage Structures
- 907-710-1: Fast Dry Solvent Traffic Paint
- 907-711-4: Synthetic Structural Fiber Reinforcement
- 907-713-3: Admixtures for Concrete
- 907-714-8: Miscellaneous Materials
- 907-715-4: Roadside Development Materials
- 907-720-2: Pavement Marking Materials
- 907-803-5: Deep Foundations
- 907-804-12: Concrete Bridge Decks, w/ Supplement
- 907-804-13: Concrete Bridges and Structures, w/Supplement

906-7: Training Special Provision

SECTION 905 - PROPOSAL, PROPOSAL BID ITEMS

COMBINATION BID PROPOSAL

CERTIFICATION OF PERFORMANCE - PRIOR FEDERAL-AID CONTRACTS

CERTIFICATION REGARDING NON-COLLUSION, DEBARMENT AND SUSPENSION

SECTION 902- CONTRACT FORM, AND SECTION 903 - CONTRACT BOND FORMS

PILE DRIVING FORM

FORM -- OCR-485

(REVISIONS TO THE ABOVE WILL BE INDICATED ON THE SECOND SHEET
OF SECTION 905 AS ADDENDA)

MISSISSIPPI DEPARTMENT OF TRANSPORTATION

SECTION 904 - NOTICE TO BIDDERS NO. 4955

CODE: (SP)

DATE: 4/14/2014

SUBJECT: Lane Closure Restrictions

PROJECT: IM-0020-01(212) 106651 Hinds County

Bidders are hereby advised that lane closure restrictions on the above captioned project shall be as follows:

Monday through Saturday: -- Lane closures will NOT be allowed between the hours of 7:00 AM to 7:00 PM on I-20.

Sunday: -- Lane closures will NOT be allowed between the hours of 12:00 PM to 7:00 PM on I-20.

Exception: -- Only for full depth concrete punchout operations a lane closure will be allowed to remain in place from 7:00 PM Friday to 7:00 AM Monday.

No further exceptions to the above restrictions will be allowed unless specifically approved by the Project Engineer.

Also, no lane closures will be permitted on the following holidays or the day preceding them: New Year's Day, Independence Day, Labor Day, Thanksgiving Day or Christmas Day. In the event that one of the above mentioned holidays falls during the weekend or on a Monday, no lane closures will be allowed during that weekend or the Friday immediately preceding that holiday.

If the lane closure restriction listed above is violated, no excuses will be accepted by the Department and the Contractor will be charged a fee of \$2,500.00 for each full or partial five minute period until the roadway is back in compliance with the lane closure restriction requirement.

For the purposes of this contract, official time shall be the announced time available at the Jackson area telephone number (601) 355-9311.

MISSISSIPPI DEPARTMENT OF TRANSPORTATION

SECTION 904 - NOTICE TO BIDDERS NO. 5025

CODE: (SP)

DATE: 4/14/2014

SUBJECT: Restrictions on Replacement of Concrete Pavement

PROJECT: IM-0020-01(212) / 106651301 & 302 -- Hinds County

Bidders are hereby advised that all concrete punchout work shall be done on weekends. Since it is critical that all lanes of traffic be opened by 7:00 AM on Monday morning, the Contractor shall schedule their operations to ensure that all repairs are completed and the minimum compressive strength of 2,500 psi has been obtained by 7:00 AM on Monday. The work area shall be cleared of equipment and materials before opening the lanes to traffic.

The contractor shall make an adequate number of cylinders to verify the strength requirements have been met prior to opening.

If it becomes necessary to open the lanes back to traffic to comply with the lane closure restriction requirements prior to the concrete obtaining the minimum compressive strength of 2,500 psi, or any part of the repair work fails for any reason, the Contractor shall remove and replace the failed area or areas at no additional cost to the Department and revise their operations in order to comply with the lane closure restriction requirements.

MISSISSIPPI DEPARTMENT OF TRANSPORTATION

SECTION 904 - NOTICE TO BIDDERS NO. 5027

CODE: (SP)

DATE: 4/16/2014

SUBJECT: Plan General Note Correction

PROJECT: IM-0020-01(212) / 106651301 – Hinds County

Bidders are hereby advised that General Note No. 20 shown on Plan Sheet No. 5, Working Sheet No. GN-2 is hereby revised as follows:

(20) RANDOM CLEARING WILL BE REQUIRED ON THE PROJECT, THE LIMITS OF THE RANDOM CLEARING WILL CONFORM TO THE DRAWINGS AND GUIDELINES SET FORTH IN THE PLANS. PROPER EROSION CONTROL MEASURES SHALL BE TAKEN TO PREVENT SILTATION OF EXISTING STRUCTURES AND LOSS OF MATERIALS FROM THE RIGHT-OF-WAY. (SEE SECTION 107.22.2) BURNING OF WASTE VEGETATION, DEBRIS, ETC. RESULTING FROM THE RANDOM CLEARING OPERATION WILL NOT BE ALLOWED ON THE INTERSTATE RIGHT-OF-WAY. BURNING ON ADJACENT PRIVATE PROPERTY THAT MIGHT RESULT IN A TRAFFIC HAZARD WILL LIKEWISE NOT BE PERMITTED. ALL DEAD OR DYING TREES WITHIN THE ROW LIMITS (STANDING OR FALLING) SHALL BE CUT AS DIRECTED BY THE ENGINEER THROUGHOUT THE LIFE OF THE PROJECT UNTIL THE FINAL MAINTENANCE RELEASE IS ISSUED. PRICE FOR CUTTING AND/OR REMOVAL OF DEAD OR DYING TREES IS TO BE INCLUDED IN OTHER ITEMS BID.

MISSISSIPPI DEPARTMENT OF TRANSPORTATION

SECTION 904 - NOTICE TO BIDDERS NO. 5028

CODE: (SP)

DATE: 4/16/2014

SUBJECT: Pay Item Correction

PROJECT: IM-0020-01(212) / 106651301 – Hinds County

The Contractor is hereby advised that the following pay items have changed from what is shown in the plan sheets but have been revised/added in the bid sheets:

1. 202-B030 Removal of Concrete Pavement, All Depths (Changed quantity to 1089 SY)
Revised
2. 907-403-A002 Hot Mix Asphalt, HT, 19-mm mixture (565 Tons) or 907-403-M011
Warm Mix Asphalt, HT, 19-mm mixture (565 Tons) **Added**

Mill & Overlay, Bridge Repair,& Landscaping approximately 7 miles of I-20 from Natchez Trace to SR 18, known as Federal Aid Project No. IM-0020-01(212) / 106651301 & 302 in Hinds County.

Line No.	Item Code	Adj Code	Quantity	Units	Description [Fixed Unit Price]
					Roadway Items
0010	201-D001		408	Station	Random Clearing
0020	202-B005		7,769	Square Yard	Removal of Asphalt Pavement, All Depths
0030	202-B021		6	Each	Removal of Concrete Lug Anchor
0040	202-B022		3,758	Linear Feet	Removal of Concrete Median Barrier
0050	202-B025		26	Square Yard	Removal of Concrete Paved Ditch
0060	202-B030		1,089	Square Yard	Removal of Concrete Pavement, All Depths
	Changed 04/16/2014				
0070	202-B041		622	Linear Feet	Removal of Fence, All Types
0080	202-B064		1,000	Linear Feet	Removal of Pipe, 8" And Above
0090	202-B069		4	Each	Removal of Sign
0100	202-B076		4,920	Linear Feet	Removal of Traffic Stripe
0110	202-B087		3,038	Linear Feet	Removal of Guard Rail, Including Rails, Posts and Terminal Ends
0120	202-B114		14	Each	Removal of Tree Less Than 10"
0130	203-EX040	(E)	5,925	Cubic Yard	Borrow Excavation, AH, LVM, Class B9-6
0140	203-G003	(E)	24,039	Cubic Yard	Excess Excavation, FM, AH
0150	204-A003		16,000	Square Yard	Geogrid, Type II, Biaxial
0160	209-A004		3,091	Square Yard	Geotextile Stabilization, Type V, Non-Woven
0170	209-A007		22,245	Square Yard	Geotextile Stabilization, Type VII, Non-Woven
0180	211-C001	(E)	263	Cubic Yard	Topsoil for Plant Holes, Contractor Furnished
0190	213-B001		1	Ton	Combination Fertilizer, 13-13-13
0200	213-B002		1	Ton	Combination Fertilizer, 8-8-8
0210	213-C001		2	Ton	Superphosphate
0220	220-A001		2	Acre	Insect Pest Control [\$30.00]
0230	221-A001	(S)	8	Cubic Yard	Portland Cement Concrete Paved Ditch
0240	223-A001		4	Acre	Mowing [\$50.00]
0250	232-A002		2	Thousand	Fertilizer for Woody Plant Material, Tablet, 21 gram
0260	232-A003		8	Thousand	Fertilizer for Woody Plant Material, Tablet, 10 gram
0270	234-A001		3,037	Linear Feet	Temporary Silt Fence
0280	406-A001		3,637	Square Yard	Cold Milling of Bituminous Pavement, All Depths
0290	406-A003		29,890	Ton	Cold Milling of Bituminous Pavement, All Depths
0300	423-A001		25	Mile	Rumble Strips, Ground In
0310	501-E001		111	Linear Feet	Expansion Joints, Without Dowels

Line No.	Item Code	Adj Code	Quantity	Units	Description [Fixed Unit Price]
0320	501-F001		80	Linear Feet	Concrete Lug Anchors
0330	501-K001		216	Square Yard	Transverse Grooving
0340	503-B001		604	Linear Feet	Saw Cut, Longitudinal Joints
0350	503-C002		474	Linear Feet	Saw Cut, 3-inch
0360	503-C007		630	Linear Feet	Saw Cut, Full Depth
0370	503-D001		39	Cubic Yard	Concrete for Base Repair
0380	503-E002		151	Each	Tie Bars, No. 5 Deformed Drilled and Epoxied or Grouted
0390	512-A001		966	Each	Holes
0400	603-A006	(S)	605	Linear Feet	6" Steel Pipe, Jacked or Bored, Wall Thickness 0.250"
0410	603-CE003	(S)	240	Linear Feet	36" x 23" Concrete Arch Pipe, Class A III
0420	603-CF003	(S)	1	Each	36" x 23" Concrete Arch Pipe End Section
0430	606-B001		3,438	Linear Feet	Guard Rail, Class A, Type 1
0440	606-C003		8	Each	Guard Rail, Cable Anchor, Type 1
0450	606-D003		6	Each	Guard Rail, Bridge End Section, Type D Modified
0460	606-D004		4	Each	Guard Rail, Bridge End Section, Type E
0470	606-D012		1	Each	Guard Rail, Bridge End Section, Type I
0480	606-E001		18	Each	Guard Rail, Terminal End Section
0490	607-B002		622	Linear Feet	60" Type II Chain Link Fence, Class I
0500	607-G132		1	Each	Gate, 3' x 60" Chain Link
0510	607-P1007		63	Each	Line Post, 7' x 1 1/2" Galvanized Steel
0520	607-P2008		9	Each	Brace Post, 7 1/2' x 2" Galvanized Steel
0530	607-P2017		1	Each	Brace Post, 5' x 2 1/2" Galvanized Steel
0540	607-P3003		2	Each	Gate Post, 8' x 2 1/2" Galvanized Steel
0550	618-A001		1	Lump Sum	Maintenance of Traffic
0560	619-A1002		45	Mile	Temporary Traffic Stripe, Continuous White
0570	619-A2002		46	Mile	Temporary Traffic Stripe, Continuous Yellow
0580	619-A3006		17	Mile	Temporary Traffic Stripe, Skip White
0590	619-A5002		3,845	Linear Feet	Temporary Traffic Stripe, Detail, Paint
0600	619-A6003		1,348	Linear Feet	Temporary Traffic Stripe, Legend, Paint
0610	619-C6001		2,254	Each	Red-Clear Reflective High Performance Raised Marker
0620	619-C7001		118	Each	Two-Way Yellow Reflective High Performance Raised Marker
0630	619-D1001		230	Square Feet	Standard Roadside Construction Signs, Less than 10 Square Feet
0640	619-D2001		719	Square Feet	Standard Roadside Construction Signs, 10 Square Feet or More
0650	619-F1001		9,700	Linear Feet	Concrete Median Barrier, Precast
0660	619-F2001		12,100	Linear Feet	Remove and Reset Concrete Median Barrier, Precast

Line No.	Item Code	Adj Code	Quantity	Units	Description [Fixed Unit Price]
0670	619-G4001		66	Linear Feet	Barricades, Type III, Single Faced
0680	619-G4005		72	Linear Feet	Barricades, Type III, Double Faced
0690	619-G5001		138	Each	Free Standing Plastic Drums
0700	619-G7001		10	Each	Warning Lights, Type "B"
0710	619-J1003		3	Unit	Impact Attenuator, 60 MPH
0720	619-J2002		1	Unit	Impact Attenuator, 60 MPH, Replacement Package
0730	620-A001		1	Lump Sum	Mobilization
0740	627-K001		2,884	Each	Red-Clear Reflective High Performance Raised Markers
0750	627-L001		206	Each	Two-Way Yellow Reflective High Performance Raised Markers
0760	630-F001		79	Each	Delineators, Guard Rail, White
0770	630-F002		82	Each	Delineators, Guard Rail, Yellow
0780	635-A001		786	Linear Feet	Vehicle Loop Assemblies
0790	815-A007	(S)	46	Ton	Loose Riprap, Size 150
0800	815-A009	(S)	141	Ton	Loose Riprap, Size 300
0810	907-216-B004		1,000	Square Yard	Solid Sodding, Bermuda
0820	907-225-A001		4	Acre	Grassing
0830	907-225-B001		12	Ton	Agricultural Limestone
0840	907-225-C001		8	Ton	Mulch, Vegetative Mulch
0850	907-226-A001		4	Acre	Temporary Grassing
0860	907-230-A135		620	Each	Shrub Planting, Elaeagnus
0870	907-230-A136		1,380	Each	Shrub Planting, Pfitzer Juniper
0880	907-230-B026		40	Each	Tree Planting, Nutall Oak
0890	907-230-B044		350	Each	Tree Planting, Crape Myrtle 'Natchez'
0900	907-230-B050		150	Each	Tree Planting, Bracken's Southern Magnolia
0910	907-230-B102		180	Each	Tree Planting, Columnar Tulip Poplar
0920	907-230-B103		52	Each	Tree Planting, Green Giant Western Cedar
0930	907-233-A001		164	Cubic Yard	Tree Bark Mulch, Type III
0940	907-233-A002		1,619	Cubic Yard	Tree Bark Mulch, Type V
0950	907-237-A003		4,000	Linear Feet	Wattles, 20"
0960	907-245-A001		945	Linear Feet	Triangular Silt Dike
0970	907-246-A001		945	Linear Feet	Sandbags
0980	907-249-A001		189	Ton	Riprap for Erosion Control
0990	907-282-A004		14	Each	Sprinkler Head, 1812-PRS-15EST
1000	907-282-A006		343	Each	Sprinkler Head, 1812-PRS-15CST
1010	907-282-A065		26	Each	Sprinkler Head, 1812-PRS-R-Van 1724

Line No.	Item Code	Adj Code	Quantity	Units	Description [Fixed Unit Price]
1020	907-282-A066		93	Each	Sprinkler Head, 5012-PL-FC-R
1030	907-282-A067		68	Each	Sprinkler Head, 5012-PL-PC-R
1040	907-282-B001		2,484	Linear Feet	Piping, 1/2" Diameter
1050	907-282-B002		3,264	Linear Feet	Piping, 3/4" Diameter
1060	907-282-B003		3,600	Linear Feet	Piping, 1" Diameter
1070	907-282-B004		1,825	Linear Feet	Piping, 1 1/4" Diameter
1080	907-282-B005		356	Linear Feet	Piping, 1 1/2" Diameter
1090	907-282-B006		334	Linear Feet	Piping, 2" Diameter
1100	907-282-B008		7,137	Linear Feet	Piping, 3" Diameter
1110	907-282-D001		55,517	Linear Feet	Valve Control Wire
1120	907-282-E001		18,450	Linear Feet	Trench Excavation and Backfill
1130	907-282-F001		1	Each	Meter with Meter Box, 2"
1140	907-282-G002		1	Each	Electric Controller, 24 Station
1150	907-282-H001		3	Each	Electric Control Valve, 1"
1160	907-282-H002		10	Each	Electric Control Valve, 1 1/2"
1170	907-282-H003		10	Each	Electric Control Valve, 2"
1180	907-282-I004		1	Each	Backflow Preventer, 3"
1190	907-282-J002		8	Each	Isolation Valve, 3"
1200	907-282-K001		4	Each	Quick Coupler Key with Hose and Swivel
1210	907-304-B005	(GT)	484	Ton	Granular Material, Class 9, Group C
1220	907-304-B007	(GT)	22,649	Ton	Granular Material, Class 5, Group E
1230	907-403-S004		25	Mile	Joint Sealant
1240	907-407-A001	(A2)	26,500	Gallon	Asphalt for Tack Coat
1250	907-503-A002	(C)	468	Square Yard	8" and Variable Continuously Reinforced Concrete Pavement, Broom Finish
1260	907-512-B001		96,600	Pounds	Portland Cement Pressure Grout Slurry, Type 1
1270	907-619-E3001		4	Each	Changeable Message Sign
1272	907-601-B003	(S)	1	Cubic Yard	Class "B" Structural Concrete, Minor Structures
	Added 04/16/2014				
1280	907-619-J3001		5	Each	Remove and Reset Impact Attenuator
1290	907-626-A006		80,225	Linear Feet	6" Thermoplastic Double Drop Traffic Stripe, Skip White
1300	907-626-C007		81,327	Linear Feet	6" Thermoplastic Double Drop Edge Stripe, Continuous White
1310	907-626-E005		4,060	Linear Feet	6" Thermoplastic Double Drop Traffic Stripe, Continuous Yellow
1320	907-626-F005		78,799	Linear Feet	6" Thermoplastic Double Drop Edge Stripe, Continuous Yellow
1330	907-626-G006		39,351	Linear Feet	Thermoplastic Double Drop Detail Stripe, White
1340	907-626-G007		363	Linear Feet	Thermoplastic Double Drop Detail Stripe, Yellow

Line No.	Item Code	Adj Code	Quantity	Units	Description [Fixed Unit Price]
1350	907-626-H009		684	Linear Feet	Thermoplastic Double Drop Legend, White
1360	907-626-H010		608	Square Feet	Thermoplastic Double Drop Legend, White
1370	907-699-A002		1	Lump Sum	Roadway Construction Stakes
1380	907-906001		1,040	Hours	Trainees [\$5.00]
ALTERNATE GROUP AA NUMBER 1					
1390	907-304-F002	(GT)	26,132	Ton	Size 610 Crushed Stone Base
ALTERNATE GROUP AA NUMBER 2					
1400	907-304-F003	(GT)	26,132	Ton	3/4" and Down Crushed Stone Base
ALTERNATE GROUP AA NUMBER 3					
1410	907-304-F004	(GT)	26,132	Ton	Size 825B Crushed Stone Base
ALTERNATE GROUP BB NUMBER 1					
1420	907-403-B007	(BA1)	5,898	Ton	Hot Mix Asphalt, ST, 12.5-mm mixture, Leveling
ALTERNATE GROUP BB NUMBER 2					
1430	907-403-N002	(BA1)	5,898	Ton	Warm Mix Asphalt, ST, 12.5-mm mixture, Leveling
ALTERNATE GROUP CC NUMBER 1					
1440	907-403-E001	(BA1)	18,333	Ton	Hot Mix Asphalt, HT, 12.5-mm mixture, Polymer Modified, Leveling
ALTERNATE GROUP CC NUMBER 2					
1450	907-403-Q002	(BA1)	18,333	Ton	Warm Mix Asphalt, HT, 12.5-mm mixture, Polymer Modified, Leveling
ALTERNATE GROUP DD NUMBER 1					
1460	907-403-E002	(BA1)	206	Ton	Hot Mix Asphalt, HT, 19-mm mixture, Polymer Modified, Leveling
ALTERNATE GROUP DD NUMBER 2					
1470	907-403-Q003	(BA1)	206	Ton	Warm Mix Asphalt, HT, 19-mm mixture, Polymer Modified, Leveling
ALTERNATE GROUP EE NUMBER 1					
1480	907-403-A011	(BA1)	12,296	Ton	Hot Mix Asphalt, ST, 12.5-mm mixture
ALTERNATE GROUP EE NUMBER 2					
1490	907-403-M003	(BA1)	12,296	Ton	Warm Mix Asphalt, ST, 12.5-mm mixture
ALTERNATE GROUP FF NUMBER 1					
1500	907-403-A012	(BA1)	2,336	Ton	Hot Mix Asphalt, ST, 19-mm mixture
ALTERNATE GROUP FF NUMBER 2					
1510	907-403-M004	(BA1)	2,336	Ton	Warm Mix Asphalt, ST, 19-mm mixture
ALTERNATE GROUP GG NUMBER 1					
1520	907-403-A015	(BA1)	6,491	Ton	Hot Mix Asphalt, ST, 9.5-mm mixture
ALTERNATE GROUP GG NUMBER 2					
1530	907-403-M001	(BA1)	6,491	Ton	Warm Mix Asphalt, ST, 9.5-mm mixture
ALTERNATE GROUP HH NUMBER 1					

Line No.	Item Code	Adj Code	Quantity	Units	Description [Fixed Unit Price]
1540	907-403-D004	(BA1)	25,335	Ton	Hot Mix Asphalt, HT, 9.5-mm mixture, Polymer Modified ALTERNATE GROUP HH NUMBER 2
1550	907-403-P001	(BA1)	25,335	Ton	Warm Mix Asphalt, HT, 9.5-mm mixture, Polymer Modified ALTERNATE GROUP II NUMBER 1
1560	907-403-D001	(BA1)	22,640	Ton	Hot Mix Asphalt, HT, 12.5-mm mixture, Polymer Modified ALTERNATE GROUP II NUMBER 2
1570	907-403-P002	(BA1)	22,640	Ton	Warm Mix Asphalt, HT, 12.5-mm mixture, Polymer Modified ALTERNATE GROUP JJ NUMBER 1
1572	907-403-A002	(BA1)	565	Ton	Hot Mix Asphalt, HT, 19-mm mixture Added 04/16/2014 ALTERNATE GROUP JJ NUMBER 2
1574	907-403-M011	(BA1)	565	Ton	Warm Mix Asphalt, HT, 19-mm mixture Added 04/16/2014
Bridge Items					
1580	202-B010		369	Square Yard	Removal of Bridge End Pavement
1590	202-B036		241	Square Yard	Removal of Concrete Slope Paving
1600	202-B307		15	Square Yard	Removal of Bridge Deck
1610	502-A001	(C)	433	Square Yard	Reinforced Cement Concrete Bridge End Pavement
1620	801-A001	(S)	308	Cubic Yard	Foundation Excavation for Bridges
1630	803-B002	(S)	2	Each	Conventional Static Pile Load Test [\$5,000.00]
1640	803-D007	(S)	13,875	Linear Feet	HP 14 x 89 Steel Piling
1650	803-I001	(S)	3	Each	PDA Test Pile
1660	803-J001	(S)	1	Each	Pile Restrike
1670	803-N001	(S)	180	Linear Feet	Exploration
1680	803-O007	(S)	180	Linear Feet	Temporary Casing, 42" Diameter
1690	805-A001	(S)	107,982	Pounds	Reinforcement
1700	813-A002	(S)	290	Linear Feet	Concrete Railing, 32"
1710	815-A009	(S)	2,816	Ton	Loose Riprap, Size 300
1720	815-D001	(S)	17	Cubic Yard	Concrete Slope Paving
1730	907-803-K007	(S)	510	Linear Feet	Drilled Shaft, 42" Diameter
1740	907-803-M006	(S)	85	Linear Feet	Trial Shaft, 42" Diameter
1750	907-804-A001	(S)	578	Cubic Yard	Bridge Concrete, Class AA
1760	907-809-PP001	(S)	1	Lump Sum	Support Wall System
1770	907-813-PP001	(S)	14	Linear Feet	Concrete Railing, 32", Per Plans
1780	907-824-PP038		14	Each	Neoprene Bearing Pads

Line No.	Item Code	Adj Code	Quantity	Units	Description [Fixed Unit Price]
1790	907-824-PP095		2	Each	Bridge Repair, Emergency Support System Installation
1800	907-824-PP095		2	Each	Bridge Repair, Emergency Support System Materials

ADDENDUM

DESCRIPTION OF SHEET

TITLE SHEET (1)
 DETAILED INDEX & GENERAL NOTES (4)
 DETAILED INDEX
 DETAILED INDEX
 GENERAL NOTES
 GENERAL NOTES
 TYPICAL SECTION SHEETS (8)
 TYPICAL SECTION EASTBOUND & WESTBOUND OVERLAY - BOP TO STA. 114+75
 TYPICAL SECTION I-20 EASTBOUND & WESTBOUND MILL & OVERLAY
 TYPICAL SECTION SHOULDER FAILURE REPAIR
 TYPICAL SECTION FAILED JOINTS AND FAILED AREAS
 TYPICAL SECTION SPRINGRIDGE INTERCHANGE RAMPS AND LOOP
 TYPICAL SECTION EASTBOUND DETOUR
 TYPICAL SECTION I-20 NEW CONSTRUCTION AT MCRAVEN ROAD
 TYPICAL SECTION SPRINGRIDGE ROAD OVERLAY

QUANTITY SHEETS (13)

SUMMARY OF QUANTITIES
 SUMMARY OF QUANTITIES
 SUMMARY OF QUANTITIES
 ESTIMATED QUANTITIES - SUMMARY OF TRAFFIC CONTROL ITEMS
 ESTIMATED QUANTITIES - PAVEMENT MARKINGS
 ESTIMATED QUANTITIES - EARTH WORK
 ESTIMATED QUANTITIES - BRIDGE END PAVEMENT AND GUARDRAIL
 ESTIMATED QUANTITIES FOR TRAFFIC CONTROL SIGNS

LOCATION TABLES - SHOULDER REPAIR
 LOCATION TABLES - PUNCHOUT REPAIR
 LOCATION TABLES - PRESSURE GROUT
 LOCATION TABLES - CLEARING LIMITS
 LOCATION TABLES - MAINLINE SPOT MILLING & LEVELING FOR PROFILE CORRECTION

PLAN/PROFILE SHEETS (47)

I-20 WEST BOUND BOP STATION 9+85.00 - STATION 22+00.00
 I-20 EAST BOUND BOP STATION 9+85.00 - STATION 22+00.00
 I-20 WEST BOUND STATION 22+00.00 - STATION 38+00.00
 I-20 EAST BOUND STATION 22+00.00 - STATION 38+00.00
 I-20 WEST BOUND STATION 38+00.00 - STATION 54+00.00
 I-20 EAST BOUND STATION 38+00.00 - STATION 54+00.00
 I-20 WEST BOUND STATION 54+00.00 - STATION 69+00.00
 I-20 EAST BOUND STATION 54+00.00 - STATION 69+00.00
 I-20 WEST BOUND STATION 69+00.00 - STATION 85+00.00
 I-20 EAST BOUND STATION 69+00.00 - STATION 85+00.00
 I-20 WEST BOUND STATION 85+00.00 - STATION 101+00.00
 I-20 EAST BOUND STATION 85+00.00 - STATION 101+00.00
 I-20 WEST BOUND STATION 101+00.00 - STATION 117+00.00
 I-20 EAST BOUND STATION 101+00.00 - STATION 117+00.00
 I-20 WEST BOUND STATION 117+00.00 - STATION 133+00.00
 I-20 EAST BOUND STATION 117+00.00 - STATION 133+00.00
 I-20 WEST BOUND STATION 133+00.00 - STATION 149+00.00
 I-20 EAST BOUND STATION 133+00.00 - STATION 149+00.00
 I-20 WEST BOUND STATION 149+00.00 - STATION 165+00.00
 I-20 EAST BOUND STATION 149+00.00 - STATION 165+00.00
 I-20 WEST BOUND STATION 165+00.00 - STATION 181+00.00
 I-20 EAST BOUND STATION 165+00.00 - STATION 181+00.00
 I-20 WEST BOUND STATION 181+00.00 - STATION 197+00.00
 I-20 EAST BOUND STATION 181+00.00 - STATION 197+00.00
 I-20 WEST BOUND STATION 197+00.00 - STATION 213+00.00
 I-20 EAST BOUND STATION 197+00.00 - STATION 213+00.00
 I-20 WEST BOUND STATION 213+00.00 - STATION 229+00.00
 I-20 EAST BOUND STATION 213+00.00 - STATION 229+00.00

WKG. NO. SH. NO.

1
 2
 3
 4
 5
 6
 7
 8
 9
 10
 11
 12
 13

SQ-1
 SQ-2
 SQ-3
 EQ-1
 EQ-2
 EQ-3
 EQ-4
 TCP-Q
 EQ-5
 EQ-6
 EQ-7
 EQ-8
 EQ-9

WK-3LT
 WK-3RT
 WK-4LT
 WK-4RT
 WK-5LT
 WK-5RT
 WK-6LT
 WK-6RT
 WK-7LT
 WK-7RT
 WK-8LT
 WK-8RT
 WK-9LT
 WK-9RT
 WK-10LT
 WK-10RT
 WK-11LT
 WK-11RT
 WK-12LT
 WK-12RT
 WK-13LT
 WK-13RT
 WK-14LT
 WK-14RT
 WK-15LT
 WK-15RT
 WK-16LT
 WK-16RT

DESCRIPTION OF SHEET

PLAN/PROFILE SHEETS (CONTINUED)

I-20 WEST BOUND STATION 229+00.00 - STATION 245+00.00
 I-20 EAST BOUND STATION 229+00.00 - STATION 245+00.00
 I-20 WEST BOUND STATION 245+00.00 - STATION 261+00.00
 I-20 EAST BOUND STATION 245+00.00 - STATION 261+00.00
 I-20 WEST BOUND STATION 261+00.00 - STATION 277+00.00
 I-20 EAST BOUND STATION 261+00.00 - STATION 277+00.00
 I-20 WEST BOUND STATION 277+00.00 - STATION 293+00.00
 I-20 EAST BOUND STATION 277+00.00 - STATION 293+00.00
 I-20 WEST BOUND STATION 293+00.00 - STATION 309+00.00
 I-20 EAST BOUND STATION 293+00.00 - STATION 309+00.00
 I-20 WEST BOUND STATION 309+00.00 - STATION 325+00.00
 I-20 EAST BOUND STATION 309+00.00 - STATION 325+00.00
 I-20 WEST BOUND STATION 325+00.00 - STATION 341+00.00
 I-20 EAST BOUND STATION 325+00.00 - STATION 341+00.00
 I-20 WEST BOUND STATION 341+00.00 - STATION 352+50.00
 I-20 EAST BOUND STATION 341+00.00 - STATION 352+50.00
 I-20 WESTBOUND PLAN FOR CLEARING (FOR INFORMATION ONLY)

SPECIAL DESIGN SHEETS (76)

VEGETATION SCHEDULE

PAVEMENT MARKING DETAILS I-20 NATCHEZ TRACE TO SR18 STA 9+85 TO STA 20+00
 PAVEMENT MARKING DETAILS I-20 NATCHEZ TRACE TO SR18 STA 20+00 TO STA 30+00
 PAVEMENT MARKING DETAILS I-20 NATCHEZ TRACE TO SR18 STA 30+00 TO STA 47+00
 PAVEMENT MARKING DETAILS I-20 NATCHEZ TRACE TO SR18 STA 47+00 TO STA 60+00
 PAVEMENT MARKING DETAILS I-20 NATCHEZ TRACE TO SR18 STA 60+00 TO STA 71+00
 PAVEMENT MARKING DETAILS I-20 NATCHEZ TRACE TO SR18 STA 71+00 TO STA 88+00
 PAVEMENT MARKING DETAILS I-20 NATCHEZ TRACE TO SR18 STA 88+00 TO STA 99+00
 PAVEMENT MARKING DETAILS I-20 NATCHEZ TRACE TO SR18 STA 99+00 TO STA 110+00
 PAVEMENT MARKING DETAILS I-20 NATCHEZ TRACE TO SR18 STA 110+00 TO STA 119+00
 PAVEMENT MARKING DETAILS SPRINGRIDGE ROAD (SOUTH OF I-20)
 PAVEMENT MARKING DETAILS SPRINGRIDGE ROAD (NORTH OF I-20)
 PAVEMENT MARKING DETAILS I-20 NATCHEZ TRACE TO SR18 STA 125+00 TO STA 133+00
 PAVEMENT MARKING DETAILS I-20 NATCHEZ TRACE TO SR18 STA 133+00 TO STA 140+00
 PAVEMENT MARKING DETAILS I-20 NATCHEZ TRACE TO SR18 STA 140+00 TO STA 150+00
 PAVEMENT MARKING DETAILS I-20 NATCHEZ TRACE TO SR18 STA 150+00 TO STA 336+00
 PAVEMENT MARKING DETAILS I-20 NATCHEZ TRACE TO SR18 STA 324+00 TO STA 354+00
 PAVEMENT MARKING DETAILS I-20 NATCHEZ TRACE TO SR18 STA 354+00 TO STA 365+00

CONSTRUCTION SIGNING WB LANES I-20 NATCHEZ TRACE TO SR18 STA 9+85 TO STA 375+00
 CONSTRUCTION SIGNING EB LANES I-20 NATCHEZ TRACE TO SR18 STA 9+85 TO STA 375+00
 I-220 INTERCHANGE
 TRAFFIC CONTROL DETAIL -EXISTING DETOUR- WESTBOUND LANES I-20
 TRAFFIC CONTROL DETAIL - PHASE II - EASTBOUND LANES I-20
 TRAFFIC CONTROL DETAIL - FINAL PHASE - I-20
 TRAFFIC CONTROL DETAIL - TYPICAL TRAFFIC - LANE SHIFTS - I-20
 TRAFFIC CONTROL DETAIL - SLIDE REPAIR - I-20
 TRAFFIC CONTROL PLAN FOR POSTED SPEED LIMIT OF LESS THAN 65 MPH
 TRAFFIC CONTROL PLAN FOR POSTED SPEED LIMIT OF 65 OR 70 MPH
 HIGHWAY SIGN AND BARRICADE DETAILS FOR CONSTRUCTION PROJECTS
 LOCATION OF R16-3 SIGNS
 PAVEMENT MARKING DETAILS FOR 2-LANE AND 4-LANE DIVIDED HIGHWAYS
 PAVEMENT MARKING DETAILS FOR 4-LANE AND 5-LANE UNDIVIDED ROADWAYS
 PAVEMENT MARKING DETAILS FOR INTERCHANGE ENTRANCE RAMPS (PARALLEL AND TAPER)
 PAVEMENT MARKING DETAILS FOR INTERCHANGE ENTRANCE RAMPS (PARALLEL AND TAPER)
 PAVEMENT MARKING DETAILS FOR INTERCHANGE WITH LANE DROPS

CONSTRUCTION SIGNING WB LANES I-20 NATCHEZ TRACE TO SR18 STA 9+85 TO STA 375+00
 CONSTRUCTION SIGNING EB LANES I-20 NATCHEZ TRACE TO SR18 STA 9+85 TO STA 375+00
 I-220 INTERCHANGE
 TRAFFIC CONTROL DETAIL -EXISTING DETOUR- WESTBOUND LANES I-20
 TRAFFIC CONTROL DETAIL - PHASE II - EASTBOUND LANES I-20
 TRAFFIC CONTROL DETAIL - FINAL PHASE - I-20
 TRAFFIC CONTROL DETAIL - TYPICAL TRAFFIC - LANE SHIFTS - I-20
 TRAFFIC CONTROL DETAIL - SLIDE REPAIR - I-20
 TRAFFIC CONTROL PLAN FOR POSTED SPEED LIMIT OF LESS THAN 65 MPH
 TRAFFIC CONTROL PLAN FOR POSTED SPEED LIMIT OF 65 OR 70 MPH
 HIGHWAY SIGN AND BARRICADE DETAILS FOR CONSTRUCTION PROJECTS
 LOCATION OF R16-3 SIGNS
 PAVEMENT MARKING DETAILS FOR 2-LANE AND 4-LANE DIVIDED HIGHWAYS
 PAVEMENT MARKING DETAILS FOR 4-LANE AND 5-LANE UNDIVIDED ROADWAYS
 PAVEMENT MARKING DETAILS FOR INTERCHANGE ENTRANCE RAMPS (PARALLEL AND TAPER)
 PAVEMENT MARKING DETAILS FOR INTERCHANGE ENTRANCE RAMPS (PARALLEL AND TAPER)
 PAVEMENT MARKING DETAILS FOR INTERCHANGE WITH LANE DROPS

STATE PROJECT NO.
 MISS. IM-0020-01(212)

WKG. NO. SH. NO.

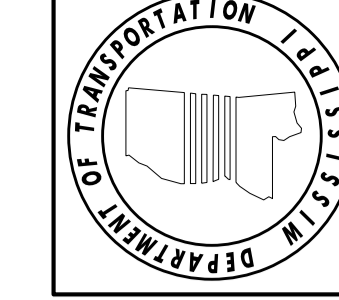
WK-17LT 55
 WK-17RT 56
 WK-18LT 57
 WK-18RT 58
 WK-19LT 59
 WK-19RT 60
 WK-20LT 61
 WK-20RT 62
 WK-21LT 63
 WK-21RT 64
 WK-22LT 65
 WK-22RT 66
 WK-22A 67
 WK-22B 68
 WK-23LT 69
 WK-23RT 70
 WK-24LT 71
 WK-24RT 72
 WK-3C 73

VS-1 74
 PMD-1 75
 PMD-2 76
 PMD-3 77
 PMD-4 78
 PMD-5 79
 PMD-6 80
 PMD-7 81
 PMD-8 82
 PMD-8A 83
 PMD-8B 84
 PMD-9 85
 PMD-10 86
 PMD-11 87
 PMD-12 88
 PMD-13 89
 PMD-14 90
 DCS-1 91
 DCS-2 92
 DCS-3 93
 TCP-1 94
 TCP-2 95
 TCP-3 96
 TCP-4 97
 TCP-5 98
 SDTCP-3 99
 SDTCP-4 100
 SDTCP-10 101
 SSD-1 102
 SDPM-1 103
 SDPM-2 104
 SDPM-3 105
 SDPM-4 106
 PMLD-1 107

3-14-20	DATE	TERRY	CHECKED	DATE
REVISION	BY			
REVISED SHEET TOTAL	NT			

TERRY			
PS & E PLANS-DATE 2-25-2014			
FMS CON. # 106651/3010008302000			
REVISIONS			
DATE	SHEET NO.	BY	
3-14-20	42,3,6,12,14-16,20,23	NT	
	35-38,49,50,61-66		
	72,108,154,161,169,		
	6168		
4-10-20	143,101,151,65,6300,6301	NT	
	6329		

MISSISSIPPI DEPARTMENT OF TRANSPORTATION	
DETAILED INDEX	
PROJECT NO. IM-0020-01(212) COUNTY : HINDS	
WORKING NUMBER	DI-1
SHEET NUMBER	2



ADDENDUM

DESCRIPTION OF SHEET

EMERGENCY / OFFICIAL USE MEDIAN CROSS OVERS
SPECIAL DESIGN SHEETS (CONTINUED)
SUPERELEVATION CASE 1 ROTATION ABOUT CENTERLINE (2% NORMAL SUBGRADE)
SUPERELEVATION RUNOFF CASE 1 ROTATION ABOUT CENTERLINE
RUMBLE STRIPES (GROUND-IN) 4 LANE WITH FULL WIDTH PAVED SHOULDER OVERLAY
TYPICAL INSTALLATION AND DETAILS OF DELINEATORS AND DISTANCE REFERENCE SIGNS
LANE CLOSURE DETAILS FOR FULL DEPTH CONCRETE PAVEMENT REPAIR
TRAFFIC CONTROL DETAILS DRUM PLACEMENT AND SHOULDER CLOSURE
DETAIL CONCRETE PAVEMENT ANCHOR
TRAFFIC SIGNAL INSTALLATION I-20 EB RAMPS @ SPRINGRIDGE ROAD (FOR INFO ONLY)
TRAFFIC SIGNAL INSTALLATION I-20 WB RAMP AT SPRINGRIDGE ROAD (FOR INFO ONLY)
TYPICAL CRC PAVEMENT REPAIR
TYPICAL CRC PAVEMENT REPAIR (WELDED WIRE METHOD)
TYP. TEMP. EROSION CONTROL MEASURES (SLOPE DRAIN AND TYPE A SILT BASIN)
DETAILS OF TYPICAL DITCH TREATMENTS
DITCH TREATMENT INSTALLATION DETAIL FOR SOIL REINFORCEMENT MAT
EROSION CONTROL
TYPICAL TEMPORARY EROSION SEDIMENT CONTROL APPLICATIONS
DETAILS OF SEDIMENT BARRIER APPLICATIONS
DETAILS OF SILT FENCE INSTALLATION
DITCH CHECK STRUCTURES TYPICAL APPLICATIONS AND DETAILS
TEMPORARY EROSION, SEDIMENT AND WATER POLLUTION CONTROL MEASURES, SILT FENCE
AND HAY BALE DITCH CHECKS
DETAILS OF EROSION CONTROL WATTLE DITCH CHECK
DETAILS OF EROSION CONTROL SILT DIKE DITCH CHECK
ROCK DITCH CHECK
ROCK DITCH CHECK WITHSUMP EXCAVATION
INLET PROTECTION TYPICAL APPLICATIONS AND DETAILS
INLET PROTECTION DETAILS FOR COURSE AGGREGATE ON GRADES AND SAGS
INLET PROTECTION DETAILS OF WATTLES
INLET PROTECTION DETAILS OF MANUFACTURED INLET PROTECTION DEVICE
INLET PROTECTION DETAILS OF SAND BAG
STABILIZED CONSTRUCTION ENTRANCE
TEMPORARY CULVERT STREAM CROSSING
TEMPORARY STREAM DIVERSION
TEMPORARY STREAM DIVERSION (BOX EXTENSIONS)
FLOATING TURBIDITY CURTAIN
DETAILS OF EROSION CONTROL SANDBAG DITCH CHECK
TYPE 1 BR. END SECT (WOOD)
TYPE 1 BR. END SECT (STEEL)
GUARDRAIL (RUB RAIL HARDWARE)
DETAILS OF RUMBLE STRIPS (GROUND-IN)

LANDSLIDE REPAIR (5)
LANDSLIDE REPAIR SEQUENCE OF CONSTRUCTION
TYPICAL SECTION SLIDE PHASE 1
TYPICAL SECTION SLIDE PHASE 2
SLIDE REPAIR PLAN PHASE 1
SLIDE REPAIR PLAN PHASE 2

LANDSCAPING (15)

EXISTING CONDITION AND DEMOLITION PLAN
OVERALL LANDSCAPING PLAN
EXISTING CONDITION AND DEMOLITION PLAN
OVERALL LANDSCAPING PLAN
LANDSCAPING PLAN NW QUADRANT
LANDSCAPE PLAN SW QUADRANT
LANDSCAPE PLAN SE QUADRANT
LANDSCAPE PLAN NE QUADRANT
OVERALL IRRIGATION PLAN
IRRIGATION PLAN NW QUADRANT
IRRIGATION PLAN SW QUADRANT
IRRIGATION PLAN SE QUADRANT
IRRIGATION PLAN NE QUADRANT
VEGETATION SCHEDULE
LANDSCAPE AND IRRIGATION DETAILS

FENCE: TYPICAL INSTALLATION AT BRIDGES
PRESSURE GROUTING

WKG. NO. SH. NO.

SDEXO-1 108

SDSE-2A 109
SDRO-1 110
RS-ALB 111
SDSN-8 112
LCD-1 113
TCP-SC 114
CPA-1 115
TSI-1 116
TSI-1 117
PR-1A 118
PR-1B 119
TEC-2 120
DT-1 121
DT-1A 122
EC-1 123
ECD-1 124
ECD-2 125
ECD-3 126
ECD-4 127
ECD-5 128
ECD-6 129
ECD-7 130
ECD-8 131
ECD-9 132
ECD-10 133
ECD-11 134
ECD-12 135
ECD-13 136
ECD-14 137
ECD-15 138
ECD-16 139
ECD-17 140
ECD-18 141
ECD-19 142
ECD-20 143
GR-2F 144
GR-2G 145
GR-RR 146
SDRS-1 147

PLT-1 148
PLT-2 149
PLT-3 150
PLT-4 151
PLT-5 152

GN1 153
SQ1 154
EXI 155
LA1 156
LA2 157
LA3 158
LA4 159
LA5 160
IR1 161
IR2 162
IR3 163
IR4 164
IR5 165
VS 166
D1 167

SDFI-1 168
PG-1 169

DESCRIPTION OF SHEET

STANDARD DRAWINGS (29)

CONTINUOUSLY REINFORCED CONCRETE PAVEMENT 20'-0" WIDE
PAVEMENT MARKING DETAILS FOR 2-LANE AND 4-LANE DIVIDED HIGHWAYS
PAVEMENT MARKING DETAILS FOR 4-LANE AND 5-LANE UNDIVIDED ROADWAYS
PAVEMENT MARKING LEGEND DETAILS
EROSION CONTROL
FENCE: CHAIN LINK CLASS I
GUARDRAIL: "W" BEAM (BEAM POSTS)
GUARDRAIL: "W" BEAM (STEEL POSTS)
GUARDRAIL: BRIDGE END SECTION TYPE "A" AND "C"
GUARDRAIL: BRIDGE END SECTIONS TYPE "E", "F" AND "G"
GUARDRAIL: BRIDGE END SECTION TYPE "D" MODIFIED
GUARDRAIL: TYPE 1 CABLE ANCHORAGE (FOUNDATION TUBE)
GUARDRAIL: TYPE 1 CABLE ANCHORAGE (CONCRETE FOOTING)
GUARDRAIL: TYPICAL INSTALLATION AT BRIDGE APPROACHES FOR DIVIDED HIGHWAYS
GUARDRAIL: MISCELLANEOUS HARDWARE
MEDIAN BARRIER: CONCRETE (PRECAST)
TYPICAL GUARDRAIL DELINEATION
TRAFFIC CONTROL PLAN FOR POSTED SPEED LIMIT OF 65 OR 70 MPH (INTERSTATES AND OTHER 4-LANE DIVIDED HIGHWAYS)
SHORT DURATION CLOSING OF DIVIDED HIGHWAYS
TRAFFIC CONTROL PLAN MOBILE OPERATIONS MULTILANE ROADS & 2-LN ROADS
DETAILS OF OUTSIDE LANE CLOSURE AT EXIT AND ENTRANCE RAMPS
TRAFFIC CONTROL PLAN FOR TEMPORARY CONSTRUCTION CROSSOVER (WORK DAY ONLY)
TRAFFIC CONTROL PLAN: UNEVEN PAVEMENT DETAILS
TEMPORARY STRIPING FOR TRAFFIC CONTROL 2-LN & 4-LN DIVIDED HIGHWAYS
TEMPORARY STRIPING FOR TRAFFIC CONTROL 4-LN & 5-LN UNDIVIDED HIGHWAYS
PIPE CULVERT INSTALLATION
CONCRETE PIPE COLLAR
FLARED END SECTION FOR CONCRETE ARCH PIPE

SPECIAL DESIGN BRIDGE SHEETS - SEE BRIDGE SHEETS BEGINNING ON 8001

CROSS SECTIONS (10)

TOTAL SHEETS (NOT INCLUDING BRIDGE SHEETS) (208)

STATE PROJECT NO.
MISS. IM-0020-01(212)

WKG. NO. SH. NO.

CRP-1A 6102
PM-1 6120
PM-2 6121
PM-6 6125
EC-1 6140
CLG-1 6162
GR-1 6168
GR-1B 6180
GR-2 6184
GR-2A 6185
GR-2B 6186
GR-3 6192
GR-3A 6193
GR-4 6194
GR-HW 6202
MB-2A 6205
SN-8C 6236
TCP-5 6254
TCP-9 6258
TCP-11 6260
TCP-12 6261
TCP-13 6262
TCP-14 6263
TCP-15 6264
TCP-16 6265
PI-1 6300
PC-1 6301
FE-1A 6329

BY	DATE	REVISION
NT	8/10/2014	ADDED SHEET
NT	8/14/2014	ADDED SHEET
NT	8/14/2014	REVISED INDEX TEXT
NT	8/14/2014	ADDED SHEET

MISSISSIPPI DEPARTMENT OF TRANSPORTATION

DETAILED INDEX

PROJECT NO. IM-0020-01(212)
COUNTY: HINDS

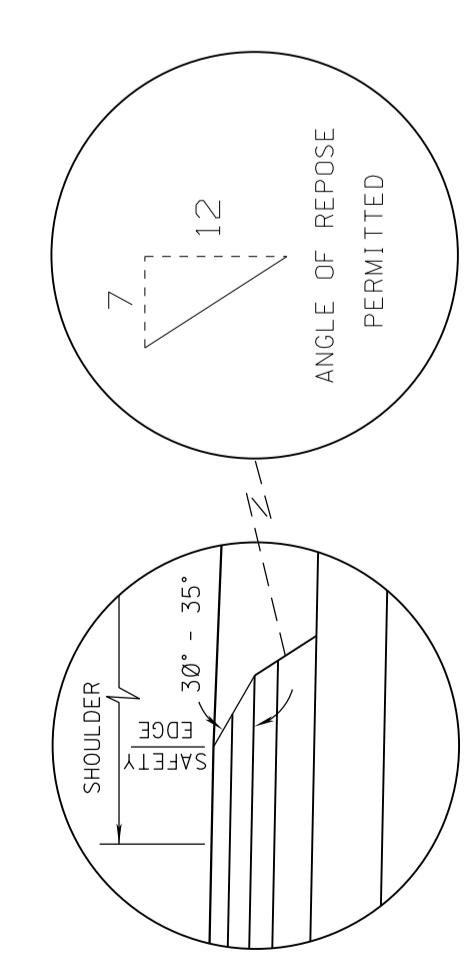
WORKING NUMBER
DI-2

SHEET NUMBER
3

FILENAME: INDEX.DGN
DESIGN TEAM TERRY
CHECKED
DATE

ADDENDUM

STATE	PROJECT NO.
MISS.	IM-0020-01(212)



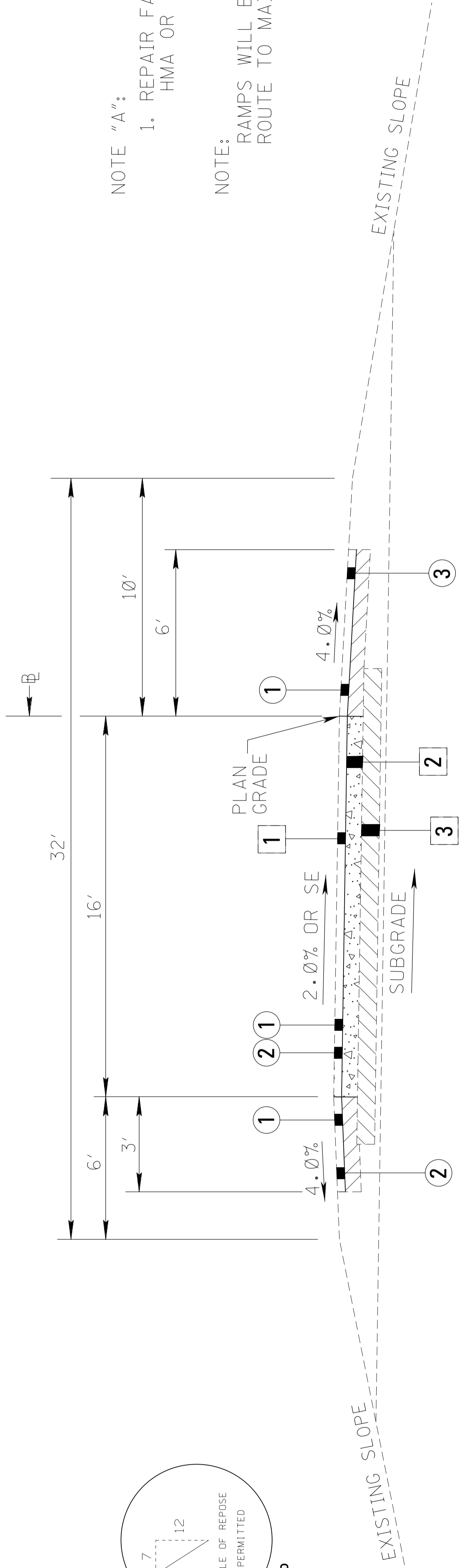
SAFETY EDGE REQ'D
TOP 2 LIFTS ONLY
(NOT A PAY ITEM)

NOTE "A":

- REPAIR FAILED AREAS WITH FULL DEPTH HMA OR WMA, ST (19mm MIXTURE)

NOTE:

RAMPS WILL BE PAVED FROM CROSSING ROUTE TO MAINLINE.



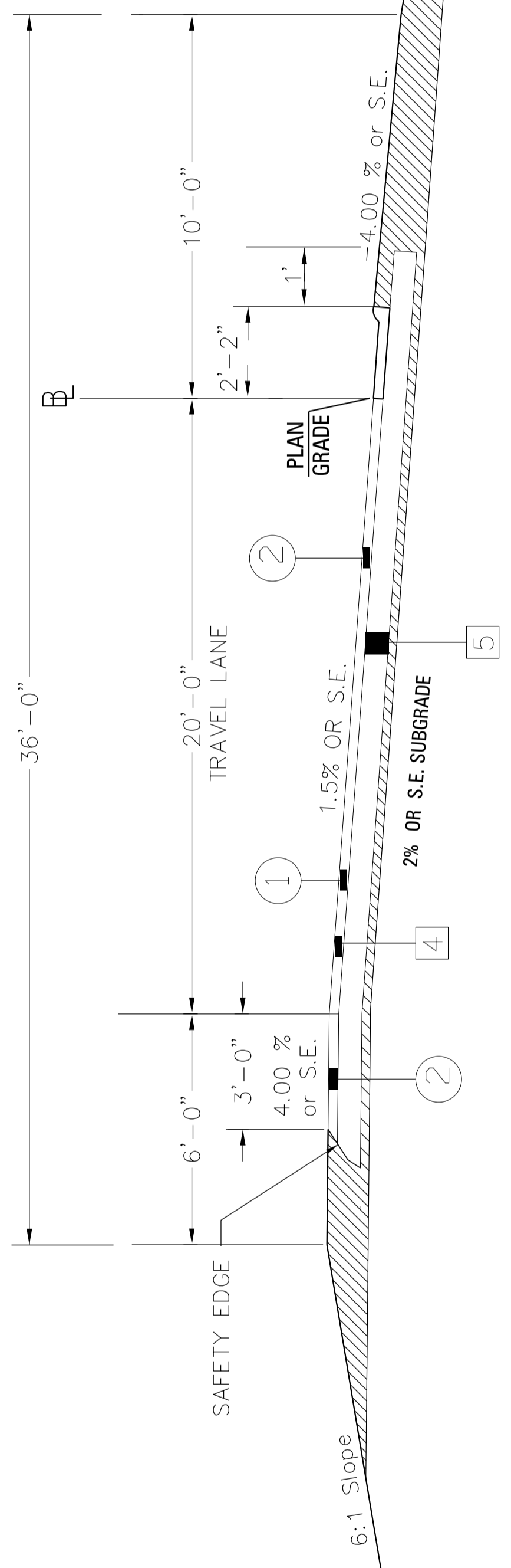
TYPICAL SECTION (SEE NOTE "A")
I-20 AT SPRINGRIDGE ROAD INTERCHANGE RAMPS
▲ WESTBOUND ENTRANCE (NW) AND WESTBOUND EXIT (NE) RAMPS
▲ EASTBOUND ENTRANCE (SE) AND EASTBOUND EXIT (SW) RAMPS

PROPOSED PAVEMENT

- 1.5" COLD MILLING
- 1.5" HMA OR WMA, HT (9.5 mm MIXTURE) POLYMER MODIFIED (1 @ 1.5")
- 1.5" HMA OR WMA, ST (9.5 mm MIXTURE)(1 @ 1.5")

EXISTING PAVEMENT

- 4.5" TO 11" HMA OVERLAY
- 8" CONTINUOUSLY REINFORCED OR JOINTED CEMENT CONCRETE PAVEMENT
- 6" CEMENT TREATED BASE
- 6" HOT BITUMINOUS PAVEMENT
- 8" BITUMINOUS BASE COURSE



TYPICAL SECTION
INTERCHANGE LOOP
SPRINGRIDGE ROAD

NOT TO SCALE

DATE	BY	REVISION
4/10/14	NT	REVISED TYPICAL LIMITS

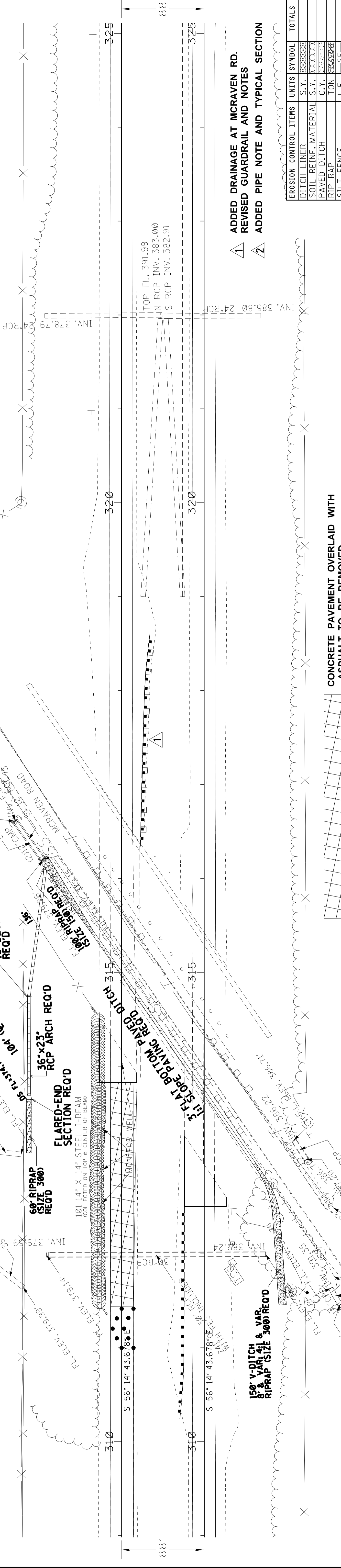
MISSISSIPPI DEPARTMENT OF TRANSPORTATION
TYPICAL SECTION
SPRINGRIDGE INTERCHANGE RAMPS AND LOOP
MILL AND OVERLAY
PROJ NO: IM-0020-01(212)
COUNTY: HINDS
FILENAME: TS.DGN
DESIGN TEAM: TERRY
CHECKED: KJC
DATE: 2013

WORKING NUMBER
TS-5
SHEET NUMBER
10



PROJECT NO.	IM-0020-01(212)
STATE	MISS.

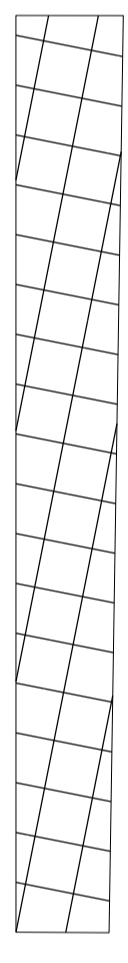
FLAT BOTTOM SECTION ALONG WEST SIDE OF MCRAVEN RD.



- 1 ADDED DRAINAGE AT MCRAVEN RD.
- 2 REVISED GUARDRAIL AND NOTES
- 3 ADDED PIPE NOTE AND TYPICAL SECTION

EROSION CONTROL ITEMS	UNITS	SYMBOL	TOTALS
DITCH LINER	S.Y.	XXXXXX	
SOIL REINF. MATERIAL	S.Y.	OOOOO	
PAVED DITCH	C.Y.	XXXXXX	
RIP RAP	TON	XXXXXX	
SILT FENCE	L.F.	XXXXXX	
GEOTEXTILE	S.Y.	XXXXXX	
SOLID SOD	S.Y.	XXXXXX	
EROSION CHECKS	BALE	XXXXXX	

CONCRETE PAVEMENT OVERLAID WITH ASPHALT TO BE REMOVED



STATION	DESCRIPTION	STATION	DESCRIPTION	STATION	DESCRIPTION	STATION	DESCRIPTION	STATION	DESCRIPTION
410		400		390		380		400.29	400.62
								400.91	401.24
								401.52	401.84
								402.14	402.46
								402.73	403.08
								403.32	403.68
								403.92	404.27
								404.53	404.88
								405.15	405.47
								405.74	406.07
								406.22	406.55
								406.56	406.85
								406.79	407.13
								407.04	407.40
								407.29	407.61
								407.47	407.80
								407.63	407.97
								407.80	408.09
								407.93	408.18
								408.00	408.22
								407.96	408.22
								407.94	408.18
								407.89	408.09
								407.77	407.95
								407.63	407.81
								407.54	407.63
								401.82	401.82
								387.89	387.89
								381.45	381.45
								383.73	383.73
								383.39	383.39
								382.06	382.06
								381.78	381.78
								384.22	384.22
								386.74	386.74
								404.21	404.21
								403.89	403.93
								403.44	403.62
								403.02	403.22
								402.63	402.81
								402.21	402.41
								401.81	402.01
								401.30	401.57
								400.79	401.13
								400.34	400.69
								399.93	400.25
								399.50	399.81
								399.03	399.36
								398.65	399.03
								398.30	398.70
								398.03	398.42
								397.82	398.18
								397.63	398.03
								397.54	397.96
								397.52	397.93
								397.56	397.95
								397.67	397.98
								397.78	398.02
								397.84	398.09
								397.91	398.20
								398.00	398.34
								398.14	398.50
								398.32	398.68
								398.37	398.73
								398.42	398.88
								398.47	399.03
								398.52	399.18
								398.57	399.33
								398.62	399.48
								398.67	399.63
								398.72	399.78
								398.77	399.93
								398.82	400.08
								398.87	400.23
								398.92	400.38
								398.97	400.53
								399.02	400.68
								399.07	400.83
								399.12	400.98
								399.17	401.13
								399.22	401.28
								399.27	401.43
								399.32	401.58
								399.37	401.73
								399.42	401.88
								399.47	402.03
								399.52	402.18
								399.57	402.33
								399.62	402.48
								399.67	402.63
								399.72	402.78
								399.77	402.93
								399.82	403.08
								399.87	403.23
								399.92	403.38
								399.97	403.53
								400.02	403.68
								400.07	403.83
								400.12	403.98
								400.17	404.13
								400.22	404.28
								400.27	404.43
								400.32	404.58
								400.37	404.73
								400.42	404.88
								400.47	405.03
								400.52	405.18
								400.57	405.33
								400.62	405.48
								400.67	405.63
								400.72	405.78
								400.77	405.93
								400.82	406.08
								400.87	406.23
								400.92	406.38
								400.97	406.53
								401.02	406.68
								401.07	406.83
								401.12	406.98
								401.17	407.13
								401.22	407.28
								401.27	407.43
								401.32	407.58
								401.37	407.73
								401.42	407.88
								401.47	408.03
								401.52	408.18
								401.57	408.33
								401.62	408.48
								401.67	408.63
								401.72	408.78
								401.77	408.93
								401.82	409.08
								401.87	409.23
								401.92	409.38
								401.97	409.53
								402.02	409.68
								402.07	409.83
								402.12	409.98
								402.17	410.13
								402.22	410.28
								402.27	410.43
								402.32	410.58
								402.37	410.73
								402.42	410.88
								402.47	411.03
								402.52	411.18
								402.57	411.33
								402.62	411.48
								402.67	411.63
								402.72	411.78
								402.77	411.93
								402.82	412.08
								402.87	412.23
								402.92	412.38
								402.97	412.53
								403.02	412.68
								403.07	412.83
								403.12	412.98
								403	

CORRUGATED STEEL AND ALUMINUM PIPE (ROUND) H-2Ø LOADING		MAXIMUM FILL HEIGHT ABOVE TOP OF PIPE (ft)			
PIPE DIAMETER (in)	MINIMUM COVER FROM TOP OF PIPE TO TOP OF SUBGRADE (in)	STEEL THICKNESS (in)		ALUMINUM THICKNESS (in)	
		Ø.079 STEEL Ø.075 ALUM. 14 GAGE	Ø.138 STEEL Ø.135 ALUM. 10 GAGE	Ø.168 STEEL Ø.164 ALUM. 8 GAGE	Ø.168 STEEL Ø.164 ALUM. 8 GAGE
12"	2 1/2" x 1/2"	Ø.064	Ø.109	Ø.138	Ø.168
15"	2 1/2" x 1/2"	Ø.064	Ø.109	Ø.138	Ø.168
18"	2 1/2" x 1/2"	Ø.064	Ø.109	Ø.138	Ø.168
24"	2 1/2" x 1/2"	Ø.064	Ø.109	Ø.138	Ø.168
30"	2 1/2" x 1/2"	Ø.064	Ø.109	Ø.138	Ø.168
36"	2 1/2" x 1/2"	Ø.064	Ø.109	Ø.138	Ø.168
42"	2 1/2" x 1/2"	Ø.064	Ø.109	Ø.138	Ø.168
48"	2 1/2" x 1/2"	Ø.064	Ø.109	Ø.138	Ø.168
54"	2 1/2" x 1/2"	Ø.064	Ø.109	Ø.138	Ø.168
60"	2 1/2" x 1/2"	Ø.064	Ø.109	Ø.138	Ø.168
66"	2 1/2" x 1/2"	Ø.064	Ø.109	Ø.138	Ø.168
72"	2 1/2" x 1/2"	Ø.064	Ø.109	Ø.138	Ø.168
78"	2 1/2" x 1/2"	Ø.064	Ø.109	Ø.138	Ø.168
84"	2 1/2" x 1/2"	Ø.064	Ø.109	Ø.138	Ø.168
90"	2 1/2" x 1/2"	Ø.064	Ø.109	Ø.138	Ø.168
96"	2 1/2" x 1/2"	Ø.064	Ø.109	Ø.138	Ø.168
102"	2 1/2" x 1/2"	Ø.064	Ø.109	Ø.138	Ø.168
108"	2 1/2" x 1/2"	Ø.064	Ø.109	Ø.138	Ø.168
114"	2 1/2" x 1/2"	Ø.064	Ø.109	Ø.138	Ø.168
120"	2 1/2" x 1/2"	Ø.064	Ø.109	Ø.138	Ø.168

NOTE: THE AVERAGE INSIDE DIAMETER SHALL NOT VARY MORE THAN ONE (1) PERCENT OR 1/2", WHICHEVER IS GREATER, FROM THE NOMINAL DIAMETER WHEN MEASURED ON THE INSIDE CREST OF THE CORRUGATIONS (AASHTO M 36/M 36 & AASHTO M 196/M 196).

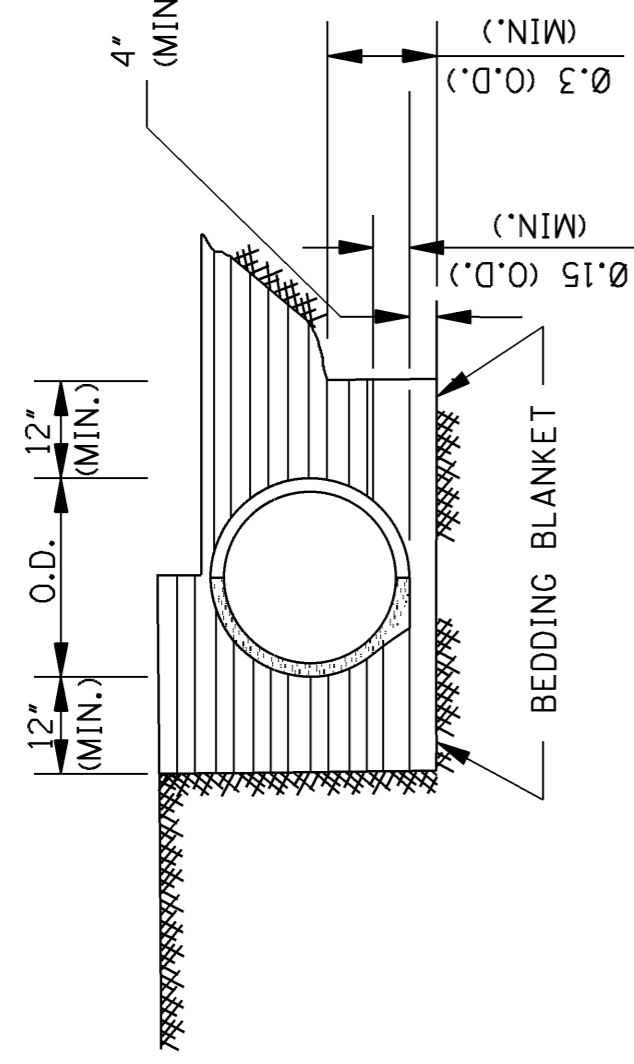
CORRUGATED METAL PIPE ARCHES H-2Ø LOADING

EQUIV. DIAMETER (in)	PIPE DIMENSION (SPAN X RISE) (in)	MINIMUM CORNER RADIUS (in)	MINIMUM COVER FROM TOP OF PIPE TO TOP OF SUBGRADE FOR 2 TONS/FT ² (in)	STEEL		ALUMINUM		
				MINIMUM THICKNESS REQUIRED (in)	MAXIMUM FILL HEIGHT ABOVE TOP OF PIPE (ft) FOR THE FOLLOWING CORNER BEARING PRESSURE (tons/ft ²)	MINIMUM THICKNESS REQUIRED (in)	MAXIMUM FILL HEIGHT ABOVE TOP OF PIPE (ft) FOR THE FOLLOWING CORNER BEARING PRESSURE (tons/ft ²)	
15"	17" X 13"	3"	Ø.064	2 1/2" X 1/2" CORRUGATION RIVETED, WELDED OR HELICAL	15'	2 TONS/FT ² + 3 TONS/FT ²	15'	2 TONS/FT ² + 3 TONS/FT ²
18"	21" X 15"	3"	Ø.064	Ø.064	15'	2 1/2" X 1/2" CORRUGATION RIVETED OR HELICAL	15'	2 1/2" X 1/2" CORRUGATION RIVETED OR HELICAL
24"	28" X 20"	3"	Ø.079	Ø.064	15'	Ø.060	14'	Ø.060
30"	35" X 24"	3"	Ø.079	Ø.079	14'	Ø.060	9'	Ø.060
36"	42" X 29"	3 1/2"	Ø.079	Ø.079	13'	Ø.075	9'	Ø.075
42"	49" X 33"	4"	Ø.079	Ø.079	12'	Ø.105	8'	Ø.105
48"	57" X 38"	5"	Ø.109	Ø.109	12'	Ø.135	8'	Ø.135
54"	64" X 43"	6"	Ø.109	Ø.109	12'	Ø.135	8'	Ø.135
60"	71" X 47"	7"	Ø.138	Ø.138	12'	Ø.164	8'	Ø.164
66"	77" X 52"	8"	Ø.168	Ø.168	12'	Ø.164	8'	Ø.164
72"	83" X 57"	9"	Ø.168	Ø.168	13'	Ø.164	8'	Ø.164
36"	40" X 31"	5"	Ø.079	Ø.079	12'	Ø.079	15'	Ø.079
42"	46" X 36"	6"	Ø.079	Ø.079	12'	Ø.079	15'	Ø.079
48"	53" X 41"	7"	Ø.079	Ø.079	12'	Ø.079	15'	Ø.079
54"	60" X 46"	8"	Ø.079	Ø.079	12'	Ø.079	15'	Ø.079
60"	66" X 51"	9"	Ø.079	Ø.079	12'	Ø.079	15'	Ø.079
66"	73" X 55"	12"	Ø.079	Ø.079	15'	Ø.079	15'	Ø.079
72"	81" X 59"	14"	Ø.079	Ø.079	15'	Ø.079	15'	Ø.079
78"	87" X 63"	14"	Ø.109	Ø.109	14'	Ø.109	15'	Ø.109
84"	95" X 67"	16"	Ø.109	Ø.109	13'	Ø.109	15'	Ø.109
90"	103" X 71"	16"	Ø.109	Ø.109	12'	Ø.109	15'	Ø.109
96"	112" X 75"	18"	Ø.109	Ø.109	11'	Ø.109	15'	Ø.109

NOTE: 1. THE AVERAGE INSIDE DIAMETER SHALL NOT VARY MORE THAN ONE (1) PERCENT OR 1/2", WHICHEVER IS GREATER, FROM THE NOMINAL DIAMETER WHEN MEASURED ON THE INSIDE CREST OF THE CORRUGATIONS. (AASHTO M 36/M 36 & AASHTO M 196/M 196).

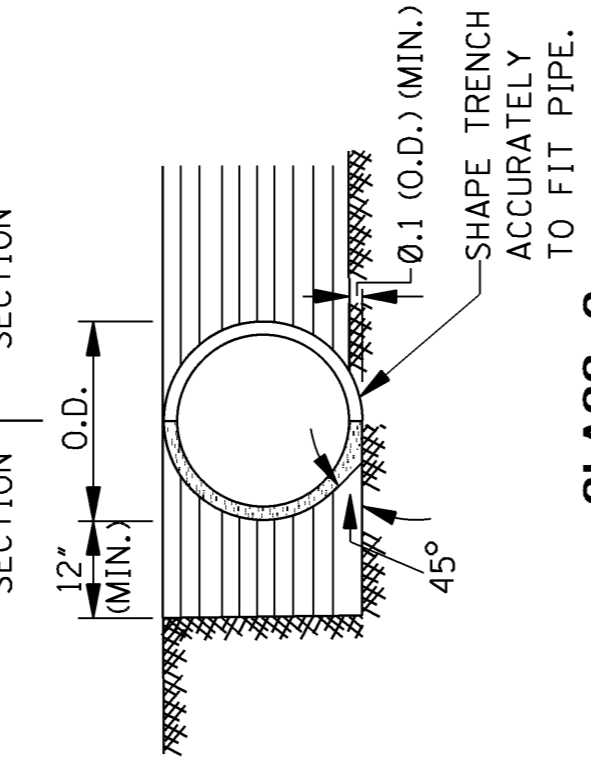
† 2. BEARING PRESSURES EXCEEDING 2 TONS/FT² REQUIRED FOR GIVEN FILL HEIGHT SHALL HAVE FOUNDATION MATERIALS INVESTIGATED TO DETERMINE BEARING CAPACITY.

TRENCH SECTION



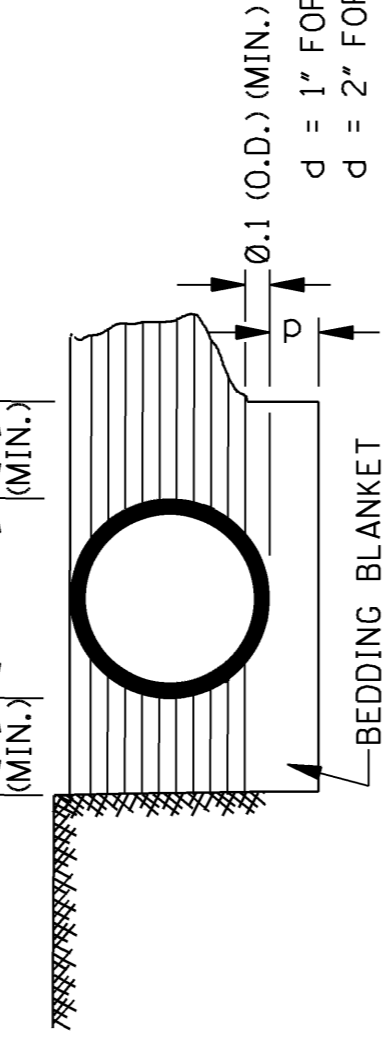
CLASS B

EMBANKMENT SECTION



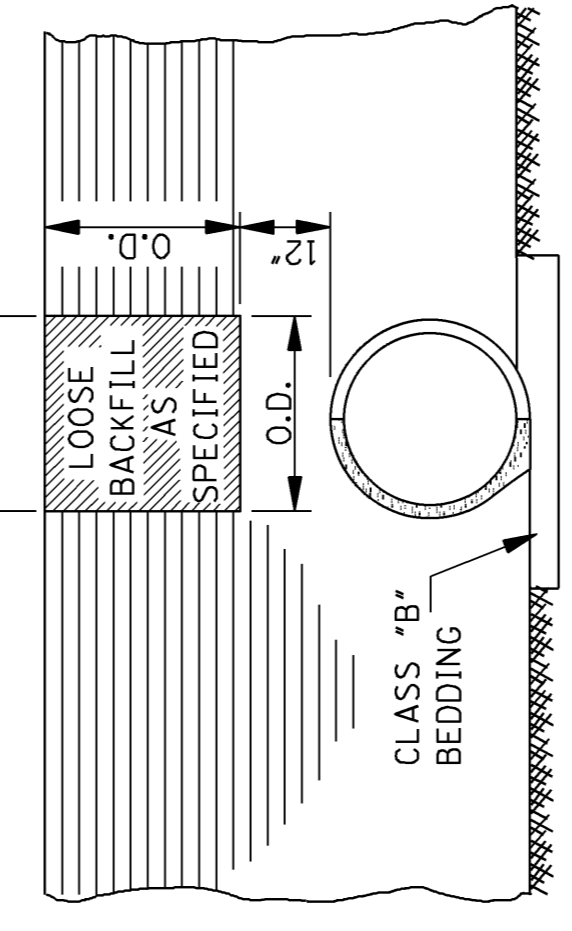
CLASS C

EMBANKMENT SECTION

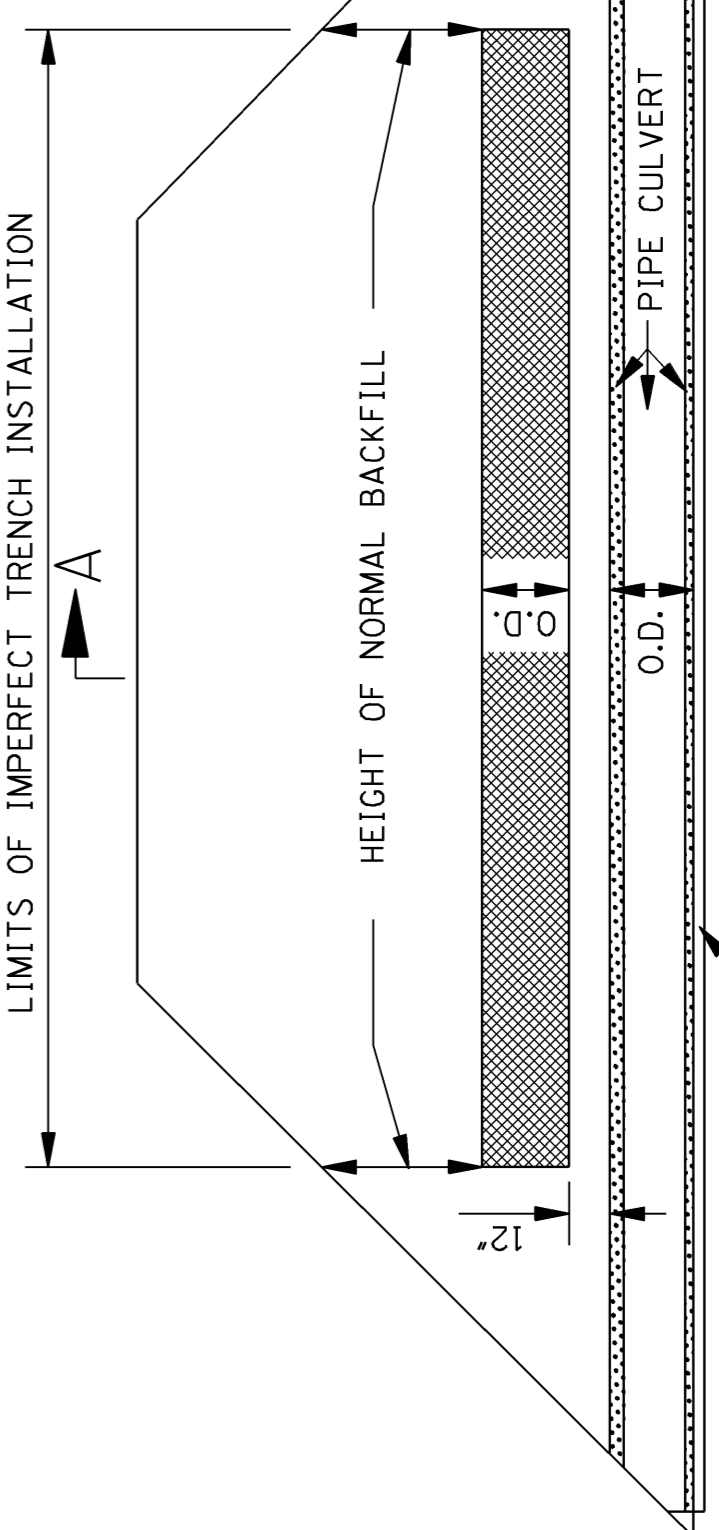


CLASS C MODIFIED

TRENCH SECTION



SECTION A-A



CLASS 'B' BEDDING

IMPERFECT TRENCH INSTALLATION

CLASS OF PIPE	TYPE OF BACKFILL	MAXIMUM HEIGHT OF FILL OVER REINFORCED CONCRETE PIPE	
		CLASS 'C' BEDDING	CLASS 'B' BEDDING
III	NORMAL	16'	-
IV	NORMAL	23'	28'
V	NORMAL	30'	36'
IV	IMPERFECT	-	90'
V	IMPERFECT	-	115'

NOTE: CLASS OF PIPE AND BEDDING TO BE CONSISTENT THROUGHOUT THE PIPE LENGTH.

PIPE SIZE (in)	MAXIMUM COVER (ft)		
	BEDDING CLASS 'C'/CLASS 'B'	TRENCH	PROJECTING
4"	SAND & GRAVEL	DAMP CLAY	POSITIVE
6"	2.00'	*	34'/42'
8"	2.25'	*	25'/30'
10"	2.50'	*	19'/24'
12"	2.75'	*	16'/19'
14"	2.75'	*	14'/17'

MAXIMUM HEIGHT OF FILL OVER CLASS 2 NONREINFORCED CONCRETE PIPE, PERFORATED AND/OR PLAIN, FOR UNDERDRAINS

- NOTES:
- INDICATES NO LIMIT OF FILL HEIGHT (130 lbs/ft³).
 - TRENCH WIDTH (B_d) NO GREATER THAN 16" PLUS O.D.
 - FACTOR OF SAFETY IS 1.25 ON MINIMUM ULTIMATE STRENGTH.
 - MINIMUM COVER FOR HIGHWAY LOADS IS 18".
 - PERFORATED PIPE SHALL BE TYPE 1.

GENERAL NOTES:

- MINIMUM SPACING BETWEEN MULTIPLE LINES OF PARALLEL PIPE SHALL BE THE DISTANCE REQUIRED FOR INSTALLING THE ADJACENT FLARED END SECTIONS OR AS SHOWN ON THE HEADWALL DRAWINGS FOR CONDUITS REQUIRING HEADWALLS.
- UNLESS OTHERWISE INDICATED, THE TOP OF THE PIPE SHALL BE BELOW THE TOP OF THE SUBGRADE, AND A MINIMUM OF 12" OF COVER OVER THE TOP OF THE PIPE SHALL BE MAINTAINED BETWEEN THE SHOULDER LINES.
- WHERE PRE-BED PIPE IS INSTALLED, FLARED END SECTIONS FROM OTHER MANUFACTURERS MAY BE JOINED TO PRE-BED PIPE PROVIDED A CONCRETE COLLAR IS PLACED AT THE CONTRACTORS EXPENSE AND A DEFORMATION TO THE PIPE'S FLOWLINE IS NOT EVIDENT ON FINAL PLACEMENT.

MISSISSIPPI DEPARTMENT OF TRANSPORTATION
ROADWAY DESIGN DIVISION
STANDARD PLAN

PIPE CULVERT INSTALLATION

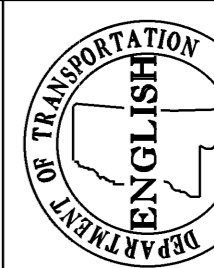
REVISION

DATE

ISSUE DATE: OCTOBER 1, 1998

WORKING NUMBER PI-1

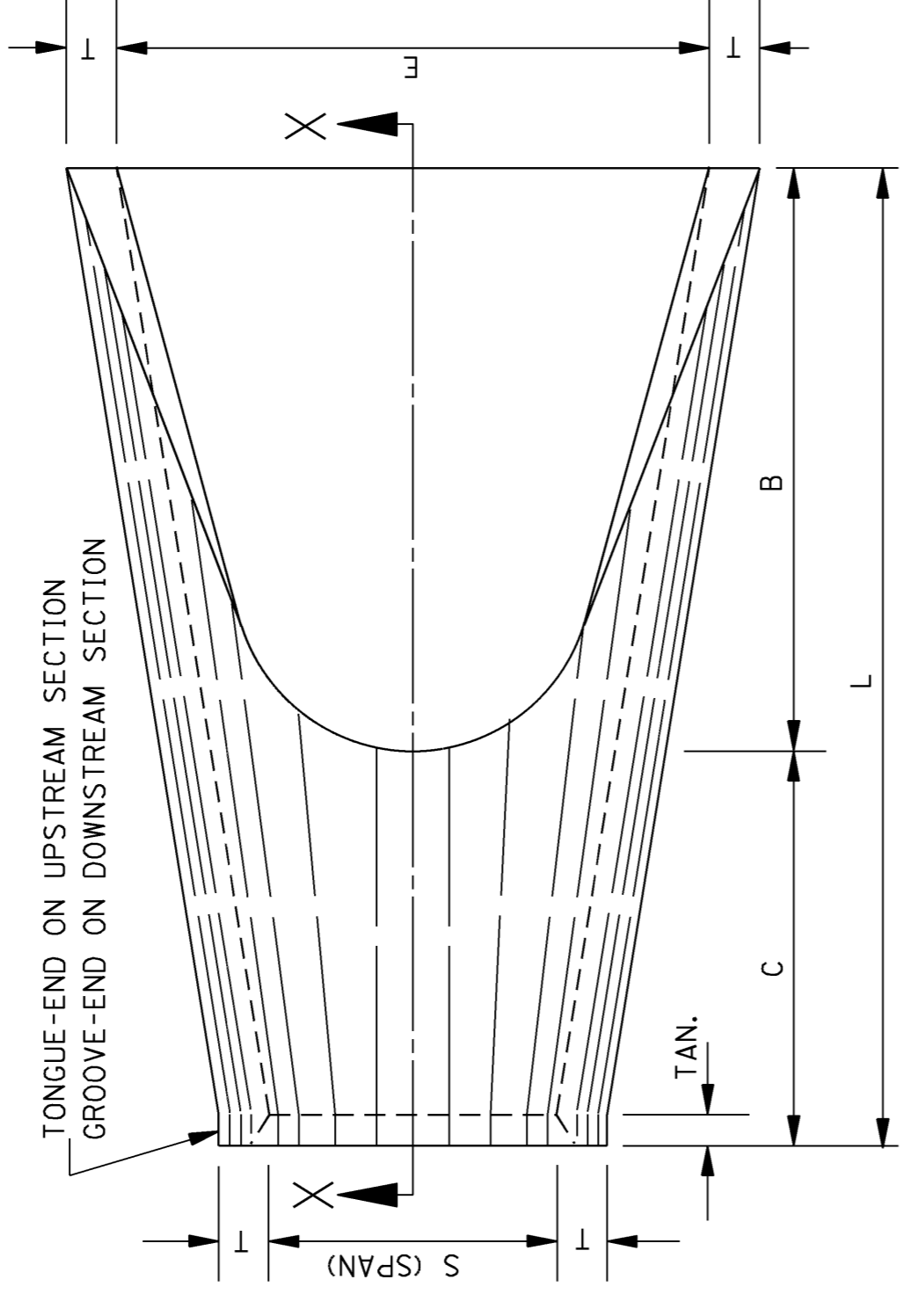
SHEET NUMBER 6300



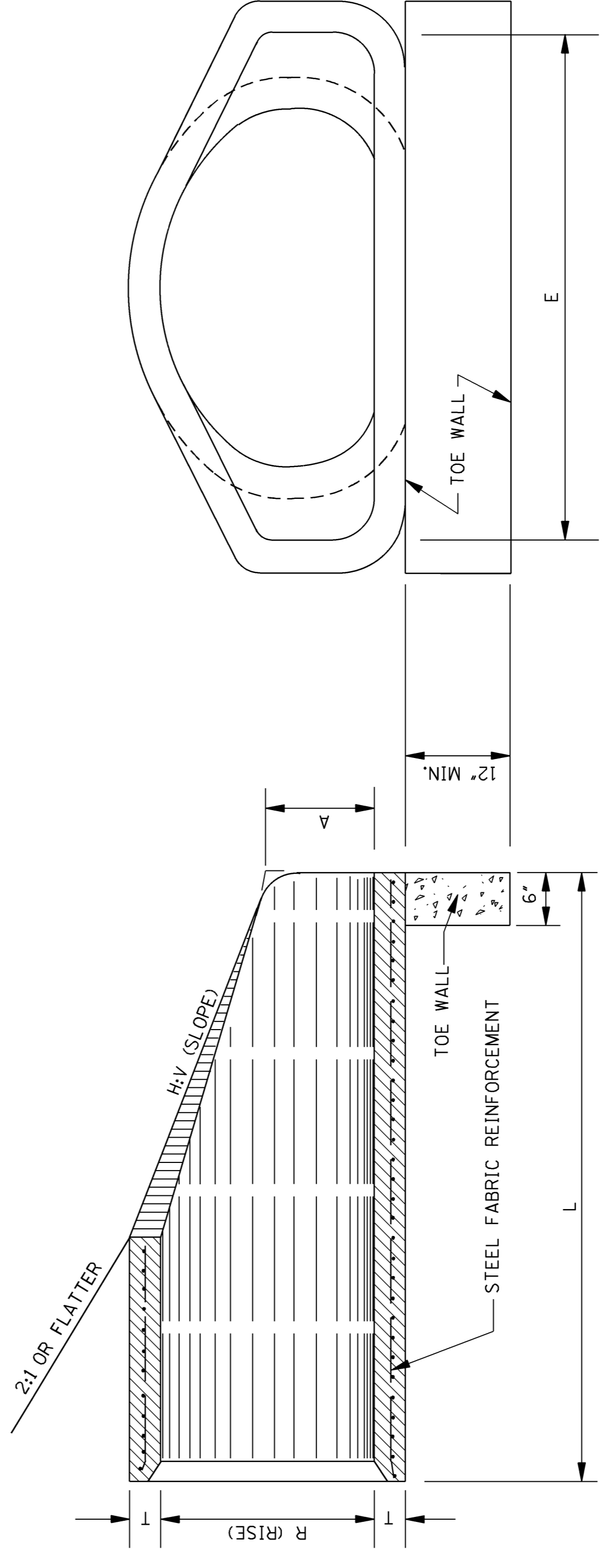
BELL AND SPIGOT END OPTION TYPE I

NOTE: BELL-END ON DOWNSTREAM SECTION
SPIGOT-END ON UPSTREAM SECTION.

FLARED END SECTION FOR CONCRETE ARCH PIPE										
EQUIV. SIZE	R	S	T	H:V	A	B	C	E	L	TOE WALL CONC. QUANTITY (yd ³)
18"	13 1/2"	22"	2 1/2"	3:1	7"	2'-3"	3'-9"	3'-0"	6'-0"	0.063
24"	18"	28 1/2"	3"	3:1	8"	3'-3"	2'-9"	4'-0"	6'-0"	0.083
30"	22 1/2"	36 1/4"	3 1/2"	3:1	10"	4'-0"	2'-0"	5'-0"	6'-0"	0.102
36"	26 5/8"	43 3/4"	4"	3:1	10 5/8"	5'-0"	3'-0"	6'-0"	8'-0"	0.123
42"	31 3/8"	51 1/8"	4 1/2"	3:1	1'-3 3/8"	5'-0"	3'-0"	6'-6"	8'-0"	0.134
48"	36"	58 1/2"	5"	3:1	1'-9"	5'-0"	3'-0"	7'-0"	8'-0"	0.145
54"	40"	65"	5 1/2"	3:1	2'-1 1/2"	5'-0"	3'-0"	7'-6"	8'-0"	0.156
60"	45"	73"	6"	3:1	2'-2"	6'-3"	1'-9"	8'-0"	8'-0"	0.167
72"	54"	88"	7"	3:1	2'-11"	6'-6"	1'-10"	10'-0"	8'-4"	0.207



PLAN OF DOWNSTREAM END



SECTION X-X

FRONT ELEVATION

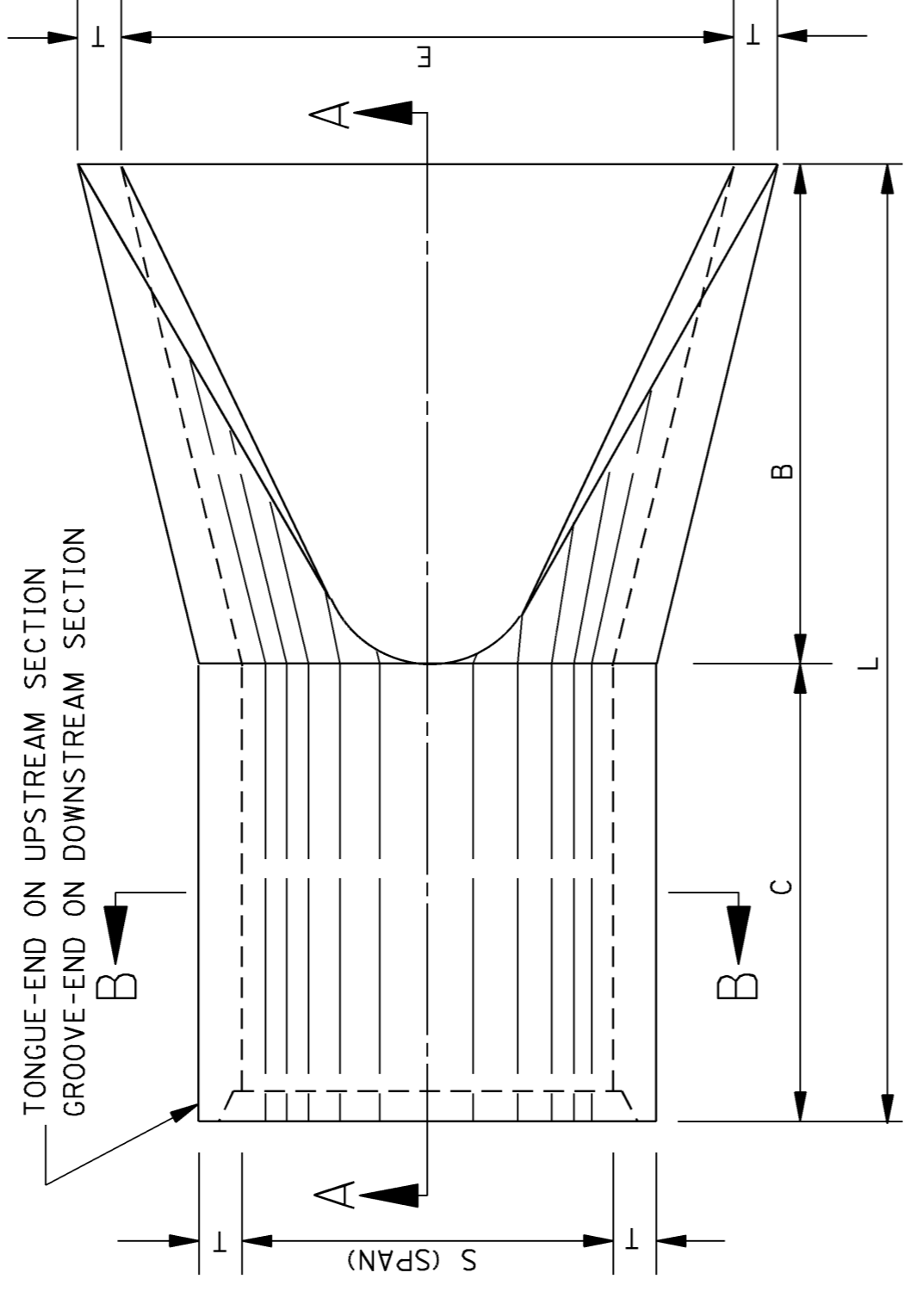
- GENERAL NOTES:
1. FLARED END SECTIONS ARE NOT TO BE USED INSIDE THE CLEAR ZONE.
 2. UNLESS OTHERWISE DESIGNATED, EITHER TYPE I OR TYPE II MAY BE USED, PROVIDED THE SELECTED TYPE IS COMPATIBLE WITH THE CONFIGURATION OF THE PIPE TO WHICH IT IS TO BE ATTACHED.
 3. ALL SIZES OF TYPE I AND TYPE II FLARED END SECTIONS FOR CONCRETE ARCH PIPE MAY BE FURNISHED WITH EITHER BELL AND SPIGOT OR TONGUE AND GROOVE ENDS.

BELL AND SPIGOT END OPTION TYPE II

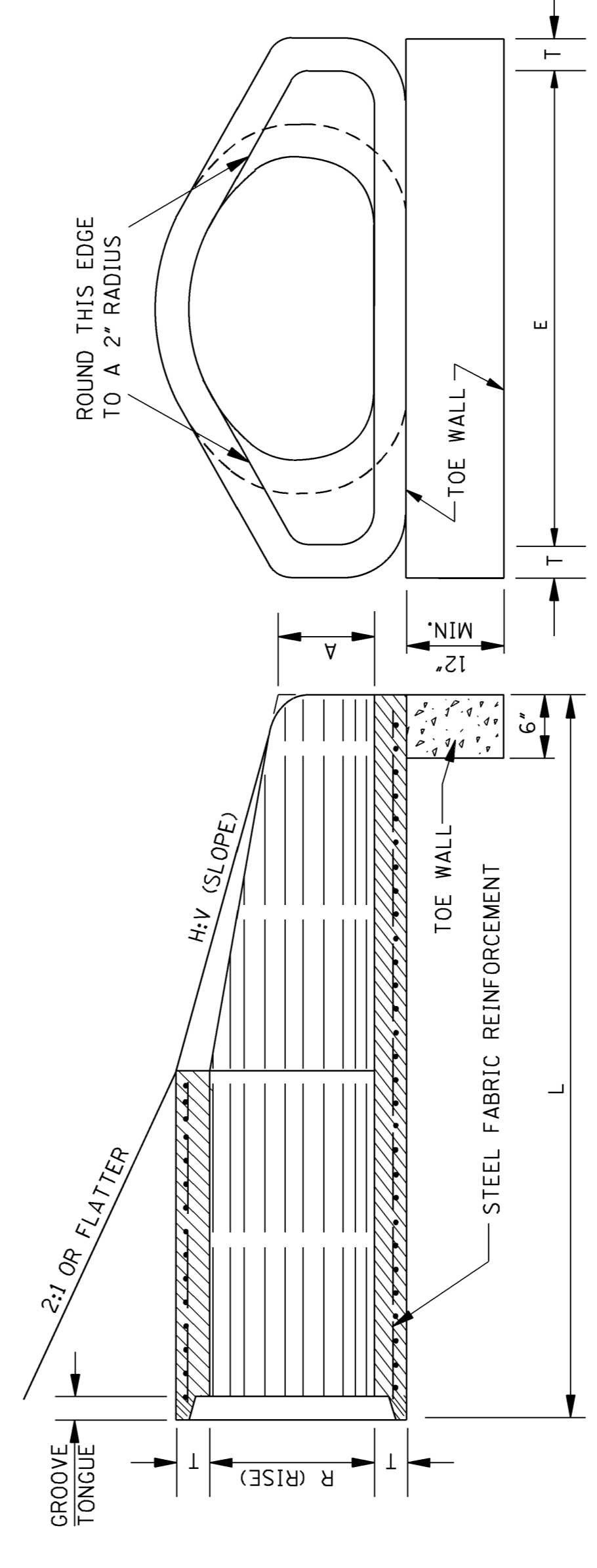
NOTE: BELL-END ON DOWNSTREAM SECTION
SPIGOT-END ON UPSTREAM SECTION.

FLARED END SECTION FOR CONC. ARCH PIPE-SHORT FLARE										
EQUIV. SIZE	R	S	T	H:V	A	B	C	E	L	TOE WALL CONC. QUANTITY (yd ³)
18"	13 1/2"	22"	2 1/2"	3:1	7"	2'-3"	3'-9"	3'-0"	6'-0"	0.063
24"	18"	28 1/2"	3 1/2"	3:12:1	9"	3'-3"	2'-9 1/2"	4'-0"	6'-0 1/2"	0.083
30"	22 1/2"	36 1/4"	4"	2.94:1	9 1/2"	4'-2"	3'-10 1/2"	5'-0"	8'-0 1/2"	0.102
36"	26 5/8"	43 3/4"	4 1/2"	3.08:1	11 5/8"	5'-0"	3'-0 1/2"	6'-0"	8'-0 1/2"	0.123
42"	31 3/8"	51 1/8"	4 1/2"	3.08:1	1'-4 3/8"	5'-0"	3'-0 1/2"	6'-6"	8'-0 1/2"	0.134
48"	36"	58 1/2"	5"	3.16:1	1'-10"	5'-0"	3'-0 1/2"	7'-0"	8'-0 1/2"	0.145
54"	40"	65"	5 1/2"	3.24:1	2'-3"	5'-0"	3'-0 5/8"	7'-6"	8'-0 5/8"	0.156
60"	45"	73"	6"	3.33:1	2'-9"	5'-0"	3'-0 5/8"	8'-0"	8'-0 5/8"	0.167

NOTES: *1. EQUIVALENT 18" FLARED END SECTION SIMILAR TO TYPE I.
2. DIMENSIONS A, B, C, E AND L MAY VARY 1"±.

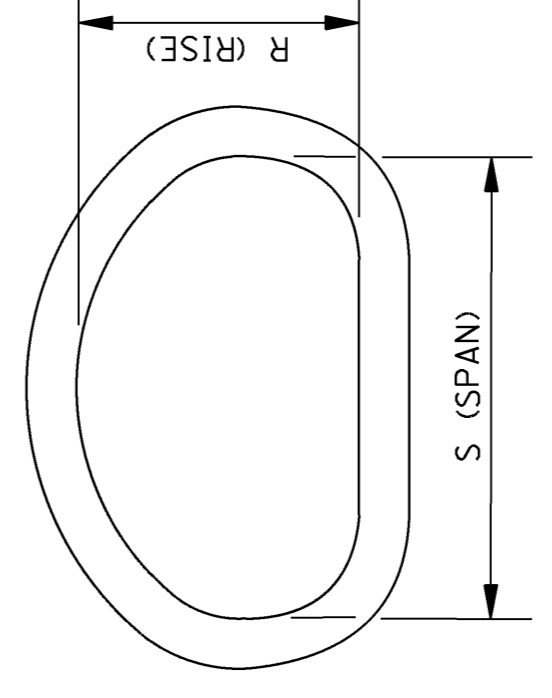


PLAN OF DOWNSTREAM END



SECTION A-A

FRONT ELEVATION



SECTION B-B

MISSISSIPPI DEPARTMENT OF TRANSPORTATION
ROADWAY DESIGN DIVISION
STANDARD PLAN

FLARED END SECTION FOR CONCRETE ARCH PIPE

WORKING NUMBER FE-1A
SHEET NUMBER 6329

ISSUE DATE: OCTOBER 1, 1998

STATE PROJECT NO.
MISS.