

SECTION 905 -- PROPOSAL (CONTINUED)

I (We) further propose to execute the attached contract agreement (Section 902) as soon as the work is awarded to me (us), and to begin and complete the work within the time limit(s) provided for in the Specifications and Advertisement. I (We) also propose to execute the attached contract bond (Section 903) in an amount not less than one hundred (100) percent of the total of my (our) part, but also to guarantee the excellence of both workmanship and materials until the work is finally accepted.

I (We) enclose a certified check, cashier's check or bid bond for **five percent (5%) of total bid** and hereby agree that in case of my (our) failure to execute the contract and furnish bond within Ten (10) days after notice of award, the amount of this check (bid bond) will be forfeited to the State of Mississippi as liquidated damages arising out of my (our) failure to execute the contract as proposed. It is understood that in case I am (we are) not awarded the work, the check will be returned as provided in the Specifications.

Bidder acknowledges receipt of and has added to and made a part of the proposal and contract documents the following addendum (addenda):

ADDENDUM NO. 1 DATED 7/7/2014 ADDENDUM NO. DATED
ADDENDUM NO. DATED ADDENDUM NO. DATED

Number	Description
1	Revised BidItems; Revised or Added Plan Sheet Nos. 2, 4, 12, 18, 19, 22, 25, 26, 35, 130, 131, 133, 134, 137, 138, 140, & 141; Amendment EBS Download Required.

TOTAL ADDENDA: 1
(Must agree with total addenda issued prior to opening of bids)

Respectfully Submitted,

DATE _____

Contractor

BY _____
Signature

TITLE _____

ADDRESS _____

CITY, STATE, ZIP _____

PHONE _____

FAX _____

E-MAIL _____

(To be filled in if a corporation)

Our corporation is chartered under the Laws of the State of _____ and the names, titles and business addresses of the executives are as follows:

_____ President	_____ Address
_____ Secretary	_____ Address
_____ Treasurer	_____ Address

The following is my (our) itemized proposal.

HSIP-0020-01(191) / 105536301 SP-0020-01(063) / 105536302 Rankin County(ies)

Revised 09/21/2005

Work necessary for Interchange Improvements on I-20 at the West Brandon Interchange, known as Federal Aid Project No. HSIP-0020-01(191) / 105536301 and State Project No. SP-0020-01(063) / 105536302 in Rankin County.

Line No.	Item Code	Adj Code	Quantity	Units	Description [Fixed Unit Price]
					Roadway Items
0010	201-A001		1	Lump Sum	Clearing and Grubbing
0020	202-B005		3,424	Square Yard	Removal of Asphalt Pavement, All Depths
0030	202-B025		308	Square Yard	Removal of Concrete Paved Ditch
0040	202-B030		387	Square Yard	Removal of Concrete Pavement, All Depths
0050	202-B033		245	Square Yard	Removal of Concrete Pavement w/ Variable Depth Overlay
0060	202-B036		2,130	Square Yard	Removal of Concrete Slope Paving
0070	202-B038		3,900	Linear Feet	Removal of Curb, All Types
0080	202-B039		35	Each	Removal of Delineator, All Types
0090	202-B041		1,826	Linear Feet	Removal of Fence, All Types
0100	202-B042		1	Each	Removal of Flared End Section, All Sizes
0110	202-B059		154	Square Feet	Removal of Legend, All Types
0120	202-B061		1	Each	Removal of Low Mast Lighting Foundation
0130	202-B064		224	Linear Feet	Removal of Pipe, 8" And Above
0140	202-B070		38	Each	Removal of Sign Including Post & Footing
0150	202-B072		4,002	Square Yard	Removal of Soil Cement Treated Base, All Depths
0160	202-B076		2,598	Linear Feet	Removal of Traffic Stripe
0170	202-B079		1	Each	Removal of Headwall
0180	202-B102		680	Linear Feet	Removal of Guard Rail
0190	202-B138		150	Square Yard	Removal of Riprap
0200	202-B141		495	Linear Feet	Removal of Edge Drain
0210	202-B215		6	Each	Removal of Curb Inlet
0220	202-B216		1,388	Square Yard	Removal of Island Pavement, All Types
0230	202-B252		375	Linear Feet	Removal of Electrical Conductors
0240	203-A003	(E)	2,258	Cubic Yard	Unclassified Excavation, FM, AH
0250	203-EX029	(E)	61,594	Cubic Yard	Borrow Excavation, AH, FME, Class B15
0260	203-G003	(E)	36,804	Cubic Yard	Excess Excavation, FM, AH
0270	206-A001	(S)	112	Cubic Yard	Structure Excavation
0280	209-A004		1,523	Square Yard	Geotextile Stabilization, Type V, Non-Woven
0290	213-C001		7	Ton	Superphosphate
0300	217-A001		23	Square Yard	Ditch Liner
0310	219-A001		24	Thousand Gallon	Watering [\$20.00]
0320	220-A001		7	Acre	Insect Pest Control [\$30.00]

Line No.	Item Code	Adj Code	Quantity	Units	Description [Fixed Unit Price]
0330	221-A001	(S)	151	Cubic Yard	Portland Cement Concrete Paved Ditch
0340	223-A001		1	Acre	Mowing [\$50.00]
0350	234-A001		1,556	Linear Feet	Temporary Silt Fence
0360	236-A004		5	Each	Silt Basin, Type D
0370	239-A001		1,000	Linear Feet	Temporary Slope Drains
0380	406-A001		9,153	Square Yard	Cold Milling of Bituminous Pavement, All Depths
0390	413-B001		404	Linear Feet	Cleaning and Sealing Joints
0400	423-A001		1	Mile	Rumble Strips, Ground In
0410	501-E001		86	Linear Feet	Expansion Joints, Without Dowels
0420	502-A001	(C)	187	Square Yard	Reinforced Cement Concrete Bridge End Pavement
0430	503-C007		2,040	Linear Feet	Saw Cut, Full Depth
0440	602-A001	(S)	1,008	Pounds	Reinforcing Steel
	Changed 07/07/2014				
0450	603-CA002	(S)	170	Linear Feet	18" Reinforced Concrete Pipe, Class III
0455	603-CA003	(S)	84	Linear Feet	24" Reinforced Concrete Pipe, Class III
	Added 07/07/2014				
0460	603-CA004	(S)	8	Linear Feet	30" Reinforced Concrete Pipe, Class III
0470	603-CA005	(S)	212	Linear Feet	36" Reinforced Concrete Pipe, Class III
0480	603-CA107	(S)	248	Linear Feet	24" Reinforced Concrete Pipe, Class V, Jacked or Bored
0490	603-CB001	(S)	5	Each	18" Reinforced Concrete End Section
0500	603-CB002	(S)	5	Each	24" Reinforced Concrete End Section
	Changed 07/07/2014				
0510	603-CB003	(S)	1	Each	30" Reinforced Concrete End Section
0520	603-CB004	(S)	3	Each	36" Reinforced Concrete End Section
0530	604-B001		250	Pounds	Gratings
0540	605-AA003	(S)	66	Square Yard	Geotextile for Subsurface Drainage, Type III
0550	605-AA004	(S)	2,425	Square Yard	Geotextile for Subsurface Drainage, Type V
0560	605-W001	(GY)	224	Cubic Yard	Filter Material for Combination Storm Drain and/or Underdrains, Type A, FM
0570	605-W002	(GY)	120	Cubic Yard	Filter Material for Combination Storm Drain and/or Underdrains, Type B, FM
0580	606-B001		300	Linear Feet	Guard Rail, Class A, Type 1
0590	606-D012		4	Each	Guard Rail, Bridge End Section, Type I
0600	606-E001		4	Each	Guard Rail, Terminal End Section
0610	607-B001		1,768	Linear Feet	60" Type I Chain Link Fence, Class I
0620	607-G132		2	Each	Gate, 3' x 60" Chain Link
0630	607-P1007		171	Each	Line Post, 7' x 1 1/2" Galvanized Steel

Line No.	Item Code	Adj Code	Quantity	Units	Description [Fixed Unit Price]
0640	607-P2008		15	Each	Brace Post, 7 1/2' x 2" Galvanized Steel
0650	607-P2017		2	Each	Brace Post, 5' x 2 1/2" Galvanized Steel
0660	607-P3003		4	Each	Gate Post, 8' x 2 1/2" Galvanized Steel
0670	609-B001	(S)	1,075	Linear Feet	Concrete Curb, Header
0680	609-B004	(S)	944	Linear Feet	Concrete Curb, Special Design Header
0690	609-D002	(S)	443	Linear Feet	Combination Concrete Curb and Gutter Type 2
0700	609-D008	(S)	493	Linear Feet	Combination Concrete Curb and Gutter Type 3A
0710	615-A012	(S)	548	Linear Feet	Concrete Type IV Modified, 42" Height, Cast-in-Place Median Barrier
0720	615-A018	(S)	40	Linear Feet	Concrete Bridge End Barrier, 33.5"
0730	615-A020	(S)	269	Linear Feet	Concrete Type III Modified Cast-in-Place Median Barrier, 42" High
0740	615-A022	(S)	190	Linear Feet	Concrete Pier Protection Barrier, 54"
0750	619-A1001		2,818	Linear Feet	Temporary Traffic Stripe, Continuous White
0760	619-A2001		3,835	Linear Feet	Temporary Traffic Stripe, Continuous Yellow
0770	619-A3001		120	Linear Feet	Temporary Traffic Stripe, Skip White
0780	619-A5001		10,932	Linear Feet	Temporary Traffic Stripe, Detail
0790	619-A6001		1,963	Linear Feet	Temporary Traffic Stripe, Legend
0800	619-A6002		1,444	Square Feet	Temporary Traffic Stripe, Legend
0810	619-D1001		97	Square Feet	Standard Roadside Construction Signs, Less than 10 Square Feet
0820	619-D2001		962	Square Feet	Standard Roadside Construction Signs, 10 Square Feet or More
0830	619-E1001		3	Each	Flashing Arrow Panel, Type C
0840	619-F1001		3,645	Linear Feet	Concrete Median Barrier, Precast
0850	619-F2001		109	Linear Feet	Remove and Reset Concrete Median Barrier, Precast
0860	619-G4001		186	Linear Feet	Barricades, Type III, Single Faced
0870	619-G5001		183	Each	Free Standing Plastic Drums
0880	619-G7001		12	Each	Warning Lights, Type "B"
0890	619-J1001		1	Unit	Impact Attenuator, 40 MPH
0900	619-J2005		1	Unit	Impact Attenuator, 40 MPH, Replacement Package
0910	620-A001		1	Lump Sum	Mobilization
0920	621-A001		1	Each	Field Laboratory
0930	627-K001		380	Each	Red-Clear Reflective High Performance Raised Markers
0940	627-L001		53	Each	Two-Way Yellow Reflective High Performance Raised Markers
0950	627-M001		41	Each	One-Way Clear Reflective High Performance Raised Markers
0960	627-N001		9	Each	One-Way Yellow Reflective High Performance Raised Markers
0970	629-A001		2	Each	Vehicular Impact Attenuator, 50 MPH
0980	629-B001		2	Each	Median Barrier End Section

Line No.	Item Code	Adj Code	Quantity	Units	Description [Fixed Unit Price]
0990	630-A001		162	Square Feet	Standard Roadside Signs, Sheet Aluminum, 0.080" Thickness
1000	630-A002		233	Square Feet	Standard Roadside Signs, Sheet Aluminum, 0.125" Thickness
1010	630-B001		210	Square Feet	Interstate Directional Signs, Bolted Extruded Aluminum Panels, Ground Mounted
1020	630-C001		36	Linear Feet	Steel U-Section Posts, 2.0 lb/ft
1030	630-C003		189	Linear Feet	Steel U-Section Posts, 3.0 lb/ft
1040	630-D003		195	Linear Feet	Structural Steel Beams, W6 x 9
1050	630-E001		192	Pounds	Structural Steel Angles & Bars, 3" x 3" x 1/4" Angles
1060	630-E004		337	Pounds	Structural Steel Angles & Bars, 7/16" x 2 1/2" Flat Bar
1070	630-F001		11	Each	Delineators, Guard Rail, White
1080	630-F006		2	Each	Delineators, Post Mounted, Single White
1090	630-F007		6	Each	Delineators, Post Mounted, Single Yellow
1100	630-F008		39	Each	Delineators, Post Mounted, Double White
1110	630-F009		5	Each	Delineators, Post Mounted, Double Yellow
1120	630-G002		10	Each	Type 3 Object Markers, OM-3R or OM-3L, Post Mounted
1130	630-K001		98	Linear Feet	Welded & Seamless Steel Pipe Posts, 3"
1140	630-K002		145	Linear Feet	Welded & Seamless Steel Pipe Posts, 3 1/2"
1150	630-K003		71	Linear Feet	Welded & Seamless Steel Pipe Posts, 4"
1160	635-A001		24	Linear Feet	Vehicle Loop Assemblies
1170	636-A005		800	Linear Feet	Shielded Cable, AWG #14, 2 Conductor
1180	638-A005		2	Each	Loop Detector Amplifier, Card Rack Mounted, 4 Channel
1190	640-A003		2	Each	Traffic Signal Heads, Type 1A
1200	640-A016		16	Each	Traffic Signal Heads, Type 1 LED
1210	640-A017		3	Each	Traffic Signal Heads, Type 2 LED
1220	640-A018		3	Each	Traffic Signal Heads, Type 3 LED
1230	640-A056		4	Each	Traffic Signal Heads, Type 2 FYA LED
1240	646-A001		1	Lump Sum	Removal of Existing Traffic Signal Equipment
1250	647-A001		2	Each	Pullbox, Type 1
1260	647-A002		3	Each	Pullbox, Type 3
1270	647-A003		7	Each	Pullbox, Type 4
1280	647-A004		8	Each	Pullbox, Type 5
1290	647-A005		15	Each	Pullbox, Type 2
1300	648-A001		3	Each	Radio Interconnect, Installed in New Controller Cabinet
1310	653-B001		106	Square Feet	Street Name Sign, Encapsulated Lens
1320	666-B022		347	Linear Feet	Electric Cable, Underground in Conduit, IMSA 20-1, AWG 8, 2 Conductor
1330	666-B037		740	Linear Feet	Electric Cable, Underground in Conduit, THHN, AWG 1/0, 4 Conductor

Line No.	Item Code	Adj Code	Quantity	Units	Description [Fixed Unit Price]
1340	666-B040		305	Linear Feet	Electric Cable, Underground in Conduit, THHN, AWG #8, 3 Conductor
1350	666-B054		1,832	Linear Feet	Electric Cable, Underground in Conduit, IMSA 20-1, AWG 14, 8 Conductor
1360	668-A018		1,346	Linear Feet	Traffic Signal Conduit, Underground, Type 4, 2"
1370	668-A020		132	Linear Feet	Traffic Signal Conduit, Underground, Type 4, 3"
1380	668-A026		931	Linear Feet	Traffic Signal Conduit, Underground, Rolled Pipe, 3"
1390	682-A031		175	Linear Feet	Underground Branch Circuit, AWG 6, 3 Conductor
1400	682-B031		200	Linear Feet	Underground Branch Circuit, Jacked or Bored, AWG 6, 3 Conductor
1410	686-A001		1	Each	Relocation of Existing Lighting Assemblies
1420	808-A001	(S)	1,392	Linear Feet	Joint Preparation
1430	815-A007	(S)	165	Ton	Loose Riprap, Size 150
	Changed 07/07/2014				
1440	815-A009	(S)	1,366	Ton	Loose Riprap, Size 300
1450	815-E001	(S)	875	Square Yard	Geotextile under Riprap
1460	907-216-A001		250	Square Yard	Solid Sodding
1470	907-225-A001		14	Acre	Grassing
1480	907-225-B001		28	Ton	Agricultural Limestone
1490	907-225-C001		28	Ton	Mulch, Vegetative Mulch
1500	907-226-A001		14	Acre	Temporary Grassing
1510	907-237-A003		8,000	Linear Feet	Wattles, 20"
1520	907-246-B002		250	Each	Rockbags
1530	907-249-A001		1,651	Ton	Riprap for Erosion Control
1540	907-249-B001		980	Cubic Yard	Remove and Reset Riprap
1550	907-304-A005	(GY)	7,977	Cubic Yard	Granular Material, LVM, Class 9, Group C
1560	907-304-A010	(GY)	1,345	Cubic Yard	Granular Material, LVM, Class 5, Group E
1570	907-307-C003	(M)	3,570	Square Yard	6" Soil-Lime-Water Mixing, Class C
1580	907-307-D001		49	Ton	Lime
1590	907-307-S001	(A3)	893	Gallon	Bituminous Curing Seal
1600	907-407-A001	(A2)	1,043	Gallon	Asphalt for Tack Coat
1610	907-413-E001		72	Linear Feet	Sawing and Sealing Transverse Joints in Asphalt Pavement
1620	907-601-B003	(S)	16	Cubic Yard	Class "B" Structural Concrete, Minor Structures
	Changed 07/07/2014				
1630	907-605-O001	(S)	400	Linear Feet	6" Perforated Sewer Pipe for Underdrains, SDR 23.5
1640	907-605-O006	(S)	400	Linear Feet	12" Perforated Sewer Pipe for Underdrains, SDR 35
1650	907-605-P001	(S)	500	Linear Feet	6" Non-perforated Sewer Pipe for Underdrains, SDR 23.5
1660	907-605-P007	(S)	500	Linear Feet	12" Non-Perforated Sewer Pipe for Underdrains, SDR 35

Line No.	Item Code	Adj Code	Quantity	Units	Description [Fixed Unit Price]
1670	907-616-C002	(S)	6,000	Square Feet	Colored and Imprinted Concrete Median and Island Pavement, 6-inch Thickness
1680	907-616-C003	(S)	238	Square Feet	Colored and Imprinted Concrete Median and Island Pavement, 10-inch Thickness
1690	907-616-C004	(S)	1,290	Square Feet	Colored and Imprinted Concrete Median and Island Pavement, 4-inch Thickness
1700	907-617-A001		14	Each	Right-of-Way Marker
1710	907-618-A001		1	Lump Sum	Maintenance of Traffic
1720	907-618-B001		1	Square Feet	Additional Construction Signs [\$10.00]
1730	907-619-E3001		5	Each	Changeable Message Sign
1740	907-619-J3001		4	Each	Remove and Reset Impact Attenuator
1750	907-626-A006		9,440	Linear Feet	6" Thermoplastic Double Drop Traffic Stripe, Skip White
1760	907-626-B005		2,668	Linear Feet	6" Thermoplastic Double Drop Traffic Stripe, Continuous White
1770	907-626-C007		3,383	Linear Feet	6" Thermoplastic Double Drop Edge Stripe, Continuous White
1780	907-626-D005		1,657	Linear Feet	6" Thermoplastic Double Drop Traffic Stripe, Skip Yellow
1790	907-626-E005		1,657	Linear Feet	6" Thermoplastic Double Drop Traffic Stripe, Continuous Yellow
1800	907-626-F005		6,156	Linear Feet	6" Thermoplastic Double Drop Edge Stripe, Continuous Yellow
1810	907-626-G006		9,437	Linear Feet	Thermoplastic Double Drop Detail Stripe, White
1820	907-626-G007		2,215	Linear Feet	Thermoplastic Double Drop Detail Stripe, Yellow
1830	907-626-H009		1,963	Linear Feet	Thermoplastic Double Drop Legend, White
1840	907-626-H010		1,444	Square Feet	Thermoplastic Double Drop Legend, White
1850	907-637-A001		1	Each	Equipment Cabinet, Type B
1860	907-637-A002		1	Each	Equipment Cabinet, Type C
1870	907-639-A002		1	Each	Traffic Signal Equipment Pole, Type II, 17' Shaft, 50' Arm
1880	907-639-A007		1	Each	Traffic Signal Equipment Pole, Type II, 17' Shaft, 40' Arm
1890	907-639-A008		1	Each	Traffic Signal Equipment Pole, Type II, 17' Shaft, 55' Arm
1900	907-639-A011		3	Each	Traffic Signal Equipment Pole, Type II, 17' Shaft, 35' Arm
1910	907-639-A012		1	Each	Traffic Signal Equipment Pole, Type II, 17' Shaft, 45' Arm
1920	907-639-A087		1	Each	Traffic Signal Equipment Pole, Type III, 17' Shaft, 30' & 35' Arms
1930	907-639-A120		1	Each	Traffic Signal Equipment Pole, Type III, 17' Shaft, 30' & 30' Arms
1940	907-639-C002		6	Cubic Yard	Pole Foundations, 36" Diameter
1950	907-639-C004		13	Cubic Yard	Pole Foundations, 30" Diameter
1960	907-639-E001		3	Each	Camera Pole with Foundation, 50' Pole
1970	907-641-C001		3	Each	Signal Radar Detection System
1980	907-641-D001		1	Lump Sum	Signal Radar Detection Training
1990	907-642-A003		3	Each	Solid State Traffic Actuated Controllers, Type 8A
2000	907-644-C002		3	Each	Phase Selector, 4 Channel
2010	907-650-A002		8	Each	On Street Video Equipment, Fixed Type

Line No.	Item Code	Adj Code	Quantity	Units	Description [Fixed Unit Price]
2020	907-650-A003		3	Each	On Street Video Equipment, PTZ Type
2030	907-657-A001		3,890	Linear Feet	Fiber Optic Cable, 72 SM
2040	907-657-B001		85	Linear Feet	Fiber Optic Drop Cable, 12 SM
2050	907-658-A005		3	Each	Network Switch, Type A
2060	907-658-A006		1	Each	Network Switch, Type B
2070	907-668-E001		1,180	Linear Feet	Traffic Signal Conduit Bank, Underground, Rolled Pipe, 2"
2080	907-668-E002		2,005	Linear Feet	Traffic Signal Conduit Bank, Underground, Rolled Pipe, 2 @ 2"
2090	907-668-E003		165	Linear Feet	Traffic Signal Conduit Bank, Underground, Rolled Pipe, 3 @ 2"
2100	907-668-F002		320	Linear Feet	Traffic Signal Conduit Bank, Underground, Drilled or Jacked,Rolled Pipe, 2 @ 2"
2110	907-668-F003		390	Linear Feet	Traffic Signal Conduit Bank, Underground, Drilled or Jacked,Rolled Pipe, 3 @ 2"
2120	907-668-G002		455	Linear Feet	Traffic Signal Conduit Bank, Aerial Supported, Type I, 2 @ 2"
2130	907-699-A002		1	Lump Sum	Roadway Construction Stakes
2140	907-815-F001	(S)	239	Ton	Sediment Control Stone
2150	907-823-A001		696	Linear Feet	Preformed Joint Seal, Type I
2160	907-823-B001		1,392	Linear Feet	Saw Cut, Type I
2170	907-825-A001	(S)	6,560	Square Feet	Soil Nail Retaining Walls
Changed 07/07/2014					
2180	907-825-B001	(S)	5	Each	Soil Nail Verification Tests
2190	907-825-C001	(S)	35	Each	Soil Nail Proof Tests
2200	907-899-A001		1	Lump Sum	Railway-Highway Provisions
ALTERNATE GROUP AA NUMBER 1					
2210	907-304-F002	(GT)	305	Ton	Size 610 Crushed Stone Base
ALTERNATE GROUP AA NUMBER 2					
2220	907-304-F003	(GT)	305	Ton	3/4" and Down Crushed Stone Base
ALTERNATE GROUP AA NUMBER 3					
2230	907-304-F004	(GT)	305	Ton	Size 825B Crushed Stone Base
ALTERNATE GROUP BB NUMBER 1					
2240	907-308-A001		198	Ton	Portland Cement
2250	907-308-B001	(M)	16,745	Square Yard	Soil-Cement-Water Mixing, Optional Mixers, Base
2260	907-308-S001	(A3)	4,187	Gallon	Bituminous Curing Seal
ALTERNATE GROUP BB NUMBER 2					
2270	907-311-A003	(M)	16,745	Square Yard	Processing Lime and Fly Ash Treated Course, 6" Thick
2280	907-311-B001		81	Ton	Lime
2290	907-311-C001		453	Ton	Fly Ash, Class C
2300	907-311-S001	(A3)	4,187	Gallon	Bituminous Curing Seal
ALTERNATE GROUP CC NUMBER 1					

Line No.	Item Code	Adj Code	Quantity	Units	Description [Fixed Unit Price]
2310	907-403-N008	(BA1)	12	Ton	Warm Mix Asphalt, HT, 9.5-mm mixture, Leveling ALTERNATE GROUP CC NUMBER 2
2320	907-403-B003	(BA1)	12	Ton	Hot Mix Asphalt, HT, 9.5-mm mixture, Leveling ALTERNATE GROUP DD NUMBER 1
2330	907-403-A002	(BA1)	976	Ton	Hot Mix Asphalt, HT, 19-mm mixture ALTERNATE GROUP DD NUMBER 2
2340	907-403-M011	(BA1)	976	Ton	Warm Mix Asphalt, HT, 19-mm mixture ALTERNATE GROUP EE NUMBER 1
2350	907-403-A006	(BA1)	202	Ton	Hot Mix Asphalt, MT, 12.5-mm mixture ALTERNATE GROUP EE NUMBER 2
2360	907-403-M002	(BA1)	202	Ton	Warm Mix Asphalt, MT, 12.5-mm mixture ALTERNATE GROUP FF NUMBER 1
2370	907-403-A007	(BA1)	302	Ton	Hot Mix Asphalt, MT, 19-mm mixture ALTERNATE GROUP FF NUMBER 2
2380	907-403-M007 Changed 07/07/2014	(BA1)	302	Ton	Warm Mix Asphalt, MT, 19-mm mixture ALTERNATE GROUP GG NUMBER 1
2390	907-403-A010	(BA1)	857	Ton	Hot Mix Asphalt, MT, 9.5-mm mixture ALTERNATE GROUP GG NUMBER 2
2400	907-403-M006	(BA1)	857	Ton	Warm Mix Asphalt, MT, 9.5-mm mixture ALTERNATE GROUP HH NUMBER 1
2410	907-403-A011	(BA1)	155	Ton	Hot Mix Asphalt, ST, 12.5-mm mixture ALTERNATE GROUP HH NUMBER 2
2420	907-403-M003	(BA1)	155	Ton	Warm Mix Asphalt, ST, 12.5-mm mixture ALTERNATE GROUP II NUMBER 1
2430	907-403-A012	(BA1)	1,545	Ton	Hot Mix Asphalt, ST, 19-mm mixture ALTERNATE GROUP II NUMBER 2
2440	907-403-M004	(BA1)	1,545	Ton	Warm Mix Asphalt, ST, 19-mm mixture ALTERNATE GROUP JJ NUMBER 1
2450	907-403-A015	(BA1)	214	Ton	Hot Mix Asphalt, ST, 9.5-mm mixture ALTERNATE GROUP JJ NUMBER 2
2460	907-403-M001	(BA1)	214	Ton	Warm Mix Asphalt, ST, 9.5-mm mixture ALTERNATE GROUP KK NUMBER 1
2470	907-403-D001	(BA1)	787	Ton	Hot Mix Asphalt, HT, 12.5-mm mixture, Polymer Modified ALTERNATE GROUP KK NUMBER 2

Line No.	Item Code	Adj Code	Quantity	Units	Description [Fixed Unit Price]
2480	907-403-P002	(BA1)	787	Ton	Warm Mix Asphalt, HT, 12.5-mm mixture, Polymer Modified ALTERNATE GROUP LL NUMBER 1
2490	907-403-D004	(BA1)	590	Ton	Hot Mix Asphalt, HT, 9.5-mm mixture, Polymer Modified ALTERNATE GROUP LL NUMBER 2
2500	907-403-P001	(BA1)	590	Ton	Warm Mix Asphalt, HT, 9.5-mm mixture, Polymer Modified Bridge Items
2510	501-K001		2,700	Square Yard	Transverse Grooving
2520	803-B002	(S)	1	Each	Conventional Static Pile Load Test [\$5,000.00]
2530	803-D006	(S)	1,290	Linear Feet	HP 14 x 117 Steel Piling
2540	803-I001	(S)	2	Each	PDA Test Pile
2550	803-J001	(S)	1	Each	Pile Restrike
2560	803-N001	(S)	190	Linear Feet	Exploration
2570	803-O009	(S)	75	Linear Feet	Temporary Casing, 54" Diameter
2580	803-O010	(S)	118	Linear Feet	Temporary Casing, 60" Diameter
2590	803-O020	(S)	125	Linear Feet	Permanent Casing, 54" Diameter
2600	805-A001	(S)	293,556	Pounds	Reinforcement
2610	813-A002	(S)	1,354	Linear Feet	Concrete Railing, 32"
2620	815-D001	(S)	143	Cubic Yard	Concrete Slope Paving
2630	907-607-PP019		270	Linear Feet	Safety Fence, Per Plans
2640	907-803-K003	(S)	495	Linear Feet	Drilled Shaft, 54" Diameter
2650	907-803-K006	(S)	436	Linear Feet	Drilled Shaft, 60" Diameter
2660	907-803-L005	(S)	1	Each	Test Shaft, 54" Diameter (Multi-Level Load Cell Test)
2670	907-803-L005	(S)	1	Each	Test Shaft, 54" Diameter (Single-Level Load Cell Test)
2680	907-803-M005	(S)	66	Linear Feet	Trial Shaft, 60" Diameter
2690	907-804-A001	(S)	1,450	Cubic Yard	Bridge Concrete, Class AA
2700	907-804-C012	(S)	1,077	Linear Feet	135' Prestressed Concrete Beam, Type BT-72
2710	907-804-C030	(S)	2,885	Linear Feet	80' Prestressed Concrete Beam, Type III
2720	907-804-C231	(S)	411	Linear Feet	60' Prestressed Concrete Beam, Type IV
2730	907-824-PP093		1	Lump Sum	Bridge Repair, Remove & Repair Damaged Concrete PileEncasements, Per Plans

ADDENDUM

STATE PROJECT NO.
MISS. HSIP-0020-01(191)

DESCRIPTION OF SHEET

WKG. NO. SH. NO.

TITLE SHEET (1)		1
DETAILED INDEX & GENERAL NOTES (4)		
DETAILED INDEX	DI-1	2
DETAILED INDEX	DI-2	3
DETAILED INDEX	DI-3	4
GENERAL NOTES	GN-1	5
TYPICAL SECTION SHEETS (11)		
TYPICAL SECTION - I-20 WB ON-RAMP	TS-1	6
TYPICAL SECTION - I-20 WB ON-RAMP CONT.	TS-2	7
TYPICAL SECTION - CHANNELIZED INTERSECTION (I-20 WB ON-RAMP)	TS-3	8
TYPICAL SECTION - MARQUETTE ROAD- I-20 WB ON-RAMP PIER PROTECTION	TS-4	9
TYPICAL SECTION - TURN LANE EXTENTION & MARQUETTE/VALUE RD. INTERSECT	TS-5	10
TYPICAL SECTION - HWY 80 STA. 25+20 - 28+59	TS-6	11
TYPICAL SECTION - OVERLAY & WIDENING HWY 80 @ I-20 UNDERPASS	TS-7	12
TYPICAL SECTION - HWY 80 STA. 31+28- 35+68	TS-8	13
TYPICAL SECTION - I-20 EB EXIT RAMP STA. 48+60 - 54+42	TS-9	14
TYPICAL SECTION - I-20 WB ON-RAMP & GUARDRAIL DETAIL	TS-10	15
TYPICAL SECTION - CHANNELIZED ISLAND & CURB DETAIL	TS-11	16
QUANTITY SHEETS (17)		
SUMMARY OF QUANTITIES	SQ-1	17
SUMMARY OF QUANTITIES	SQ-2	18
SUMMARY OF QUANTITIES	SQ-3	19
SUMMARY OF QUANTITIES	SQ-4	20
SUMMARY OF QUANTITIES	SQ-5	21
SUMMARY OF QUANTITIES	SQ-6	22
ESTIMATED QUANTITIES - REMOVAL ITEMS	EQ-1	23
ESTIMATED QUANTITIES - EARTHWORK	EQ-2	24
ESTIMATED QUANTITIES - GUARDRAIL, BRIDGE END PAVEMENT, SILT BASINS, AND EROSION CONTROL	EQ-3	25
ESTIMATED QUANTITIES - DRAINAGE STRUCTURES	EQ-4	26
ESTIMATED QUANTITIES - TRAFFIC CONTROL SIGNS	EQ-5	27
ESTIMATED QUANTITIES - SUMMARY OF TRAFFIC CONTROL ITEMS	EQ-6	28
ESTIMATED QUANTITIES - SUMMARY OF TRAFFIC SIGNAL ITEMS	EQ-7	29
ESTIMATED QUANTITIES - SUMMARY OF I.T.S. ITEMS	EQ-8	30
ESTIMATED QUANTITIES - STANDARD ROADSIDE SIGNS	SRS-1	31
ESTIMATED QUANTITIES - STANDARD ROADSIDE SIGNS ASSEMBLIES REQUIRED	SRS-2	32
ESTIMATED QUANTITIES - DIRECTIONAL SIGNS	DS-1	33
PLAN & PROFILE SHEETS (13)		
STA. 206+00 TO STA. 234+00 - NW RAMP	3	34
STA. 235+00 TO STA. 249+00 - NW RAMP	4	35
STA. 12+00.00 TO 17+00.00 - HWY 80	5	36
STA. 17+00.00 TO 24+00.00 - HWY 80 AT MARQUETTE RD.	6	37
STA. 24+60.360 TO 30+00.00 - HWY 80 EB CONSTRUCTION & DRAINAGE	7LT	38
STA. 24+60.360 TO 30+00.00 - HWY 80 WB CONSTRUCTION & DRAINAGE	7RT	39
STA. 29+00.00 TO 33+60.98 - HWY 80 WB CONSTRUCTION & DRAINAGE	8LT	40
STA. 28+00.00 TO 33+90.648 - HWY 80 EB CONSTRUCTION & DRAINAGE	8RT	41
STA. 39+50.00 TO 55+03.132 - SW RAMP	9	42
RAILROAD - TRACK 1 NORTH	RR-1N	43
RAILROAD - TRACK 1 SOUTH	RR-1S	44
RAILROAD - TRACK 2 NORTH	RR-2N	45
RAILROAD - TRACK 2 SOUTH	RR-2S	46
SPECIAL DESIGN SHEETS (94)		
PRELIMINARY EROSION CONTROL PLAN - MAINLINE	ECP-3	47
PRELIMINARY EROSION CONTROL PLAN - MAINLINE	ECP-4	48
PRELIMINARY EROSION CONTROL PLAN - HWY 80	ECP-5	49
PRELIMINARY EROSION CONTROL PLAN - HWY 80 AT MARQUETTE RD.	ECP-6	50
PRELIMINARY EROSION CONTROL PLAN - HWY 80 AT I-20 OVERPASS	ECP-7	51
PRELIMINARY EROSION CONTROL PLAN - HWY 80 AT I-20 OVERPASS	ECP-8	52
PRELIMINARY EROSION CONTROL PLAN - SW RAMP	ECP-9	53

DESCRIPTION OF SHEET

WKG. NO. SH. NO.

SPECIAL DESIGN SHEETS (CONTINUED)		
TYPICAL TEMPORARY EROSION / SEDIMENT CONTROL APPLICATIONS	ECD-1	54
DETAILS OF SEDIMENT BARRIER APPLICATIONS	ECD-2	55
DETAILS OF SILT FENCE INSTALLATION	ECD-3	56
DITCH CHECK STRUCTURES, TYPICAL APPLICATIONS AND DETAILS	ECD-4	57
TEMPORARY EROSION, SEDIMENT AND WATER POLLUTION CONTROL MEASURES, SILT FENCE AND HAY BALE DITCH CHECKS	ECD-5	58
DETAILS OF EROSION CONTROL WATTLE DITCH CHECK	ECD-6	59
DETAILS OF EROSION CONTROL SILT DIKE DITCH CHECK	ECD-7	60
ROCK DITCH CHECK	ECD-8	61
ROCK DITCH CHECK WITH SUMP EXCAVATION	ECD-9	62
INLET PROTECTION TYPICAL APPLICATIONS AND DETAILS	ECD-10	63
INLET PROTECTION DETAILS FOR COARSE AGGREGATE ON GRADES & SAGS	ECD-11	64
INLET PROTECTION DETAILS OF WATTLES	ECD-12	65
INLET PROTECTION DETAILS OF MANUFACTURED INLET PROTECTION DEVICE	ECD-13	66
INLET PROTECTION DETAILS OF SAND BAG	ECD-14	67
STABILIZED CONSTRUCTION ENTRANCE	ECD-15	68
TEMPORARY CULVERT STREAM CROSSING	ECD-16	69
TEMPORARY STREAM DIVERSION	ECD-17	70
TEMPORARY STREAM DIVERSION (BOX EXTENSIONS)	ECD-18	71
FLOATING TURBIDITY CURTAIN	ECD-19	72
DETAILS OF EROSION CONTROL SANDBAG DITCH CHECK	ECD-20	73
TYPICAL TEMPORARY EROSION CONTROL MEASURES (SLOPE DRAIN AND TYPE A SILT BASIN)	TEC-2	74
TYPICAL TEMPORARY EROSION CONTROL MEASURES (TYPE "D" SILT BASIN)		
(RIPRAP DIKE SILT BASIN)	TEC-D	75
DETAILS OF DITCH TREATMENT	DT-1	76
DITCH TREATMENT INSTALLATION DETAIL FOR SOIL REINFORCING MAT	DT-1A	77
TYPICAL TEMPORARY EROSION CONTROL MEASURES (TYPE "C1" SILT BASIN) (UPSTREAM OF ROADWAY PRIMARILY CAN BE USED DOWNSTREAM)	TEC-C1	78
TYPICAL TEMPORARY EROSION CONTROL MEASURES (TYPE "C2" SILT BASIN) (DOWNSTREAM OF ROADWAY WITH BAFFLE)	TEC-C2	79
ROW COORDINATE SHEET	ROW-1	80
DETAIL OF CONSTRUCTION SIGNING	DCS-1	81
TRAFFIC CONTROL PLAN - POSTED SPEED LIMIT OF 65 OR 70 MPH		
I-20 WB EXTENDED LANE CLOSURE (PHASE I, NWRAMP)	TC-1	82
TRAFFIC CONTROL DETAIL - TYPICAL TRAFFIC LANE SHIFTS (PHASE I, NWRAMP)	TC-2	83
TRAFFIC CONTROL DETAIL - HWY 80 AT MARQUETTE RD. (PHASE I, HWY 80)	TC-3	84
TRAFFIC CONTROL DETAIL- I-20 WB ENTRANCE AT HWY 80 (PHASE I, HWY 80)	TC-4	85
TRAFFIC CONTROL DETAIL- HWY 80 WB (PHASE I, HWY 80)	TC-5	86
TRAFFIC CONTROL DETAIL - HWY 80 AT MARQUETTE RD. (PHASE II, HWY 80)	TC-6	87
TRAFFIC CONTROL DETAIL - I-20 WB ENTRANCE AT HWY 80 (PHASE II, HWY 80)	TC-7	88
TRAFFIC CONTROL DETAIL- HWY 80 WB (PHASE II, HWY 80)	TC-8	89
PAVEMENT MARKINGS - HWY 80 AT MARQUETTE RD	PM-1	90
PAVEMENT MARKINGS - I-20 WESTBOUND ENTRANCE AT HWY 80 & I-20 EB EXIT RAMP	PM-2	91
PAVEMENT MARKINGS - NW RAMP STA. 612+50 (MAINLINE) TO 237+00 (NWRAMP)	PM-3	92
PAVEMENT MARKINGS - NW RAMP STA. 237+00 TO 249+50	PM-4	93
INTERSECTION DETAIL - STATION WB 80 @ STA. 18+39.752/MARQUETTE TO VALUE ROAD	ID-1	94
INTERSECTION DETAIL - NW RAMP TO HWY 80	ID-2	95
INTERSECTION DETAIL - SW RAMP & HWY 80	ID-3	96

LEHMAN

PS & E PLANS-DATE: 05/28/2014

FMS CON. # 105536/301000

REVISIONS		
DATE	SHEET NO.	BY
6/30/14	4,12,18-19,22,25-26,35,	
	130-131,133-134,137-138,	
	140-141	IBL



MISSISSIPPI DEPARTMENT OF TRANSPORTATION

DETAILED INDEX

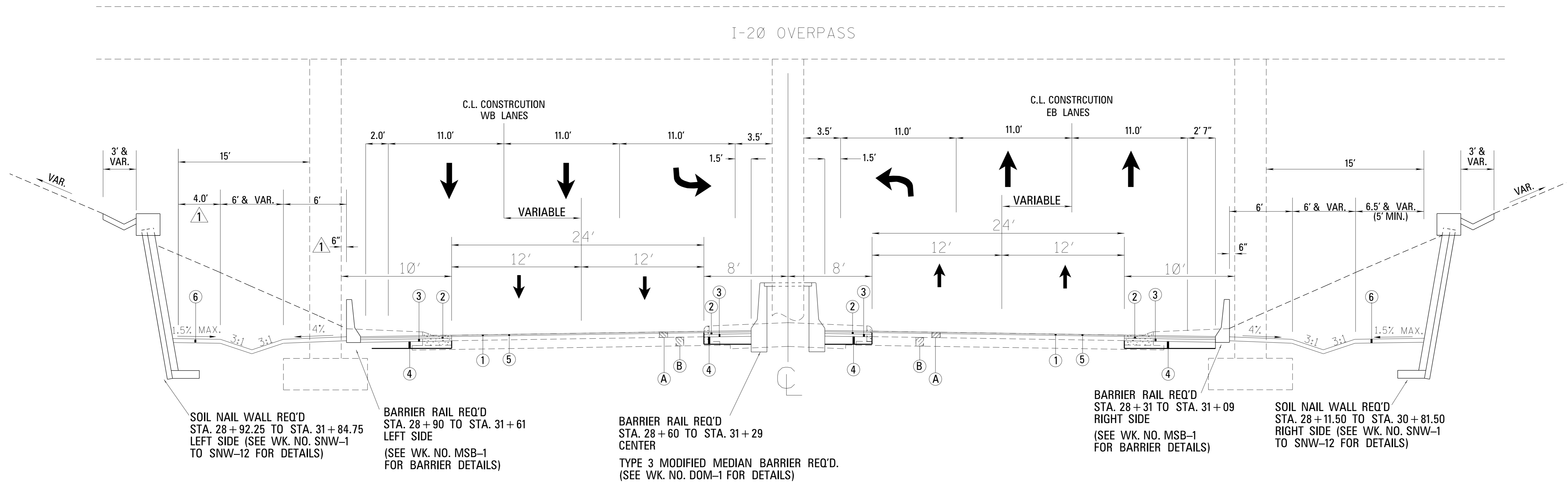
PROJECT NO. HSIP-0020-01(191)
COUNTY : RANKIN

WORKING NUMBER
DI-1

FILENAME: DETAIL INDEX.DGN
SHEET NUMBER
2

DESIGN TEAM LEHMAN CHECKED DATE 1/30/2014

7/1/2014 3:44 PM DETAILED INDEX.DGN



SOIL NAIL WALL REQ'D
STA. 28+92.25 TO STA. 31+84.75
LEFT SIDE (SEE WK. NO. SNW-1
TO SNW-12 FOR DETAILS)

BARRIER RAIL REQ'D
STA. 28+90 TO STA. 31+31
LEFT SIDE
(SEE WK. NO. MSB-1
FOR BARRIER DETAILS)

BARRIER RAIL REQ'D
STA. 28+60 TO STA. 31+29
CENTER
TYPE 3 MODIFIED MEDIAN BARRIER REQ'D.
(SEE WK. NO. DOM-1 FOR DETAILS)

BARRIER RAIL REQ'D
STA. 28+31 TO STA. 31+09
RIGHT SIDE
(SEE WK. NO. MSB-1
FOR BARRIER DETAILS)

SOIL NAIL WALL REQ'D
STA. 28+11.50 TO STA. 30+81.50
RIGHT SIDE (SEE WK. NO. SNW-1
TO SNW-12 FOR DETAILS)

TYPICAL SECTION

HWY 80 AT I-20 UNDERPASS
STA. 28+59 TO 31+28

EXISTING MATERIALS

- (A) 6.25" HMA
- (B) 10" GRANULAR MATERIAL (3C)

PROPOSED MATERIALS

- (1) 1.50" HMA OR WMA, MT (9.5 mm MIXTURE) (1@1.5)
- (2) 2.00" HMA OR WMA, MT (12.5 mm MIXTURE) (1@2)
- (3) 3.00" HMA OR WMA, MT (19 mm MIXTURE) (1@3)
- (4) 6" CRUSHED STONE W/GEOTEXTILE FABRIC (NON-WOVEN)
- (5) 1.5" MILLING REQ'D.
- (6) 4" CONCRETE PAVING REQUIRED (TO BE PAID FOR UNDER PAY ITEM NUMBER 221-A001)

NOTE:
SHOULDER BARRIER PER STANDARD SHEET MSB-1.
WHERE BASE OF BARRIER IS ABOVE THE EXISTING BRIDGE PIER FOOTINGS AND BARRIER FOOTING WILL NOT FIT, EACH BAR U SHALL BE REPLACED WITH TWO (2) VERTICAL #5 BARS DOWELED AND EPOXY SET INTO THE BRIDGE PIER FOOTING. THESE BARS SHALL HAVE A MINIMUM EMBEDMENT OF 8" INTO THE FOOTING AND A MINIMUM PROJECTION OF 10" INTO THE BARRIER.

MISSISSIPPI DEPARTMENT OF TRANSPORTATION	
TYPICAL SECTION	
OVERLAY AND WIDENING	
HWY 80 AT I-20 UNDERPASS	
PROJ. NO.: HSIP-0020-01(191)	
COUNTY: RANKIN	
FILENAME: TYPICAL_SECTIONS.DGN	
DESIGN TEAM	LEHMAN
CHECKED	DATE

WORKING NUMBER	TS-7
SHEET NUMBER	12


SUMMARY OF QUANTITIES (SHEET 2)

PAY ITEM NO.	PAY ITEM	UNIT	PRELIMINARY	FINAL
OR				
907-304-F004	SIZE 825B CRUSHED STONE BASE	TON	305	
907-307-C003	6" SOIL-LIME-WATER MIXING, CLASS C	SY	3570	
907-307-D001	LIME	TON	49	
907-307-S001	BITUMINOUS CURING SEAL	GAL	893	
OR				
907-308-A001	PORTLAND CEMENT	TON	198	
907-308-B001	SOIL-CEMENT-WATER MIXING, OPTIONAL MIXERS, BASE	SY	16745	
907-308-S001	BITUMINOUS CURING SEAL	GAL	4187	
OR				
907-311-A003	PROCESSING LIME AND FLY ASH TREATED COURSE, 6" THICK	SY	16,745	
907-311-B001	LIME	TON	81	
907-311-C001	FLY ASH, CLASS C	TON	453	
907-311-S001	BITUMINOUS CURING SEAL	GAL	4,187	
907-403-B003	HOT MIX ASPHALT, HT, 9.5-MM MIXTURE, LEVELING	TON	12	
OR				
907-403-N008	WARM MIX ASPHALT, HT, 9.5-MM MIXTURE, LEVELING	TON	12	
907-403-A002	HOT MIX ASPHALT, HT, 19-MM MIXTURE	TON	976	
OR				
907-403-M011	WARM MIX ASPHALT, HT, 19-MM MIXTURE	TON	976	
907-403-A006	HOT MIX ASPHALT, MT, 12.5-MM MIXTURE	TON	202	
OR				
907-403-M002	WARM MIX ASPHALT, MT, 12.5-MM MIXTURE	TON	202	
907-403-A007	HOT MIX ASPHALT, MT, 19-MM MIXTURE	TON	302	
OR				
907-403-M007	WARM MIX ASPHALT, MT, 19-MM MIXTURE	TON	302	
907-403-A010	HOT MIX ASPHALT, MT, 9.5-MM MIXTURE	TON	857	
OR				
907-403-M006	WARM MIX ASPHALT, MT, 9.5-MM MIXTURE	TON	857	
907-403-A011	HOT MIX ASPHALT, ST, 12.5-MM MIXTURE	TON	155	
OR				
907-403-M003	WARM MIX ASPHALT, ST, 12.5-MM MIXTURE	TON	155	
907-403-A012	HOT MIX ASPHALT, ST, 19-MM MIXTURE	TON	1545	
OR				
907-403-M004	WARM MIX ASPHALT, ST, 19-MM MIXTURE	TON	1545	
907-403-A015	HOT MIX ASPHALT, ST, 9.5-MM MIXTURE	TON	214	
OR				
907-403-M001	WARM MIX ASPHALT, ST, 9.5-MM MIXTURE	TON	214	
907-403-D001	HOT MIX ASPHALT, HT, 12.5-MM MIXTURE, POLYMER MODIFIED	TON	787	
OR				
907-403-P002	WARM MIX ASPHALT, HT, 12.5-MM MIXTURE, POLYMER MODIFIED	TON	787	
907-403-D004	HOT MIX ASPHALT, HT, 9.5-MM MIXTURE, POLYMER MODIFIED	TON	590	
OR				
907-403-P001	WARM MIX ASPHALT, HT, 9.5-MM MIXTURE, POLYMER MODIFIED	TON	590	
406-A001	COLD MILLING OF BITUMINOUS PAVEMENT, ALL DEPTHS	SY	9153	

①
②
③
④
⑤
⑥
④
△

- ① INCLUDES 20% INCREASE FROM CALCULATED QUANTITY.
- ② INCLUDES 76 TONS FOR CHEMICALLY TREATED GRANULAR MATERIAL AND 122 TONS FOR CHEMICALLY TREATED SUBGRADE.
- ③ INCLUDES 8415 S.Y. FOR CHEMICALLY TREATED GRANULAR MATERIAL AND 8330 S.Y. FOR CHEMICALLY TREATED SUBGRADE.
- ④ INCLUDES 2104 GAL. FOR CHEMICALLY TREATED GRANULAR MATERIAL AND 2083 GAL. FOR CHEMICALLY TREATED SUBGRADE.
- ⑤ INCLUDES 24 TONS FOR CHEMICALLY TREATED GRANULAR MATERIAL AND 57 TONS FOR CHEMICALLY TREATED SUBGRADE.
- ⑥ INCLUDES 228 TONS FOR CHEMICALLY TREATED GRANULAR MATERIAL AND 225 TONS FOR CHEMICALLY TREATED SUBGRADE.

7/1/2014 2:16 PM SQS-SH.DGN

<table border="1"> <tr> <td>6/20/14</td> <td>ADDED</td> <td>PAYITEM</td> <td>ALTERNATE</td> <td>IBL</td> <td>BY</td> </tr> <tr> <td></td> <td></td> <td></td> <td></td> <td></td> <td></td> </tr> <tr> <td></td> <td></td> <td></td> <td></td> <td></td> <td></td> </tr> <tr> <td></td> <td></td> <td></td> <td></td> <td></td> <td></td> </tr> </table>	6/20/14	ADDED	PAYITEM	ALTERNATE	IBL	BY																			MISSISSIPPI DEPARTMENT OF TRANSPORTATION SUMMARY OF QUANTITIES PROJECT NO.: HSIP-0020-01(191) RANKIN COUNTY FILENAME: SQS-SH.DGN DESIGN TEAM: LEHMAN CHECKED: DATE:	 WORKING NUMBER SQ-2 SHEET NUMBER 18
6/20/14	ADDED	PAYITEM	ALTERNATE	IBL	BY																					

SUMMARY OF QUANTITIES (SHEET 3)


PAY ITEM NO.	PAY ITEM	UNIT	PRELIMINARY	FINAL
907-407-A001	ASPHALT FOR TACK COAT	GAL	1043	
413-B001	CLEANING AND SEALING JOINTS	LF	404	
907-413-E001	SAWING AND SEALING TRANSVERSE JOINTS IN ASPHALT PAVEMENT	LF	72	
423-A001	RUMBLE STRIPS, GROUND IN	MI	1	
501-E001	EXPANSION JOINTS, WITHOUT DOWELS	LF	86	
502-A001	REINFORCED CEMENT CONCRETE BRIDGE END PAVEMENT	SY	187	
503-C007	SAW CUT, FULL DEPTH	LF	2040	
907-601-B003	CLASS "B" STRUCTURAL CONCRETE, MINOR STRUCTURES	CY	16	
602-A001	REINFORCING STEEL	LBS	1008	
603-CA107	24" REINFORCED CONCRETE PIPE, CLASS V, JACKED OR BORED	LF	248	
603-CA002	18" REINFORCED CONCRETE PIPE, CLASS III	LF	170	
603-CA003	24" REINFORCED CONCRETE PIPE, CLASS III	LF	84	
603-CA004	30" REINFORCED CONCRETE PIPE, CLASS III	LF	8	
603-CA005	36" REINFORCED CONCRETE PIPE, CLASS III	LF	212	
603-CB001	18" REINFORCED CONCRETE END SECTION	EA	5	
603-CB002	24" REINFORCED CONCRETE END SECTION	EA	5	
603-CB003	30" REINFORCED CONCRETE END SECTION	EA	1	
603-CB004	36" REINFORCED CONCRETE END SECTION	EA	3	
604-B001	GRATINGS	LBS	250	
605-AA003	GEOTEXTILE FOR SUBSURFACE DRAINAGE, TYPE III	SY	66	
605-AA004	GEOTEXTILE FOR SUBSURFACE DRAINAGE, TYPE V	SY	2425	
907-605-O001	6" PERFORATED SEWER PIPE FOR UNDERDRAINS, SDR 23.5	LF	400	
907-605-P001	6" NON-PERFORATED SEWER PIPE FOR UNDERDRAINS, SDR 23.5	LF	500	
907-605-O006	12" PERFORATED SEWER PIPE FOR UNDERDRAINS, SDR 35	LF	400	
907-605-P007	12" NON-PERFORATED SEWER PIPE FOR UNDERDRAINS, SDR 35	LF	500	
605-W001	FILTER MATERIAL FOR COMBINATION STORM DRAIN AND/OR UNDERDRAINS, TYPE A, FM	CY	224	
605-W002	FILTER MATERIAL FOR COMBINATION STORM DRAIN AND/OR UNDERDRAINS, TYPE B, FM	CY	120	
606-B001	GUARD RAIL, CLASS A, TYPE 1	LF	300	
606-D012	GUARD RAIL, BRIDGE END SECTION, TYPE I	EA	4	
606-E001	GUARD RAIL, TERMINAL END SECTION	EA	4	
607-B001	60" TYPE I CHAIN LINK FENCE, CLASS I	LF	1768	
607-G132	GATE, 3' X 60" CHAIN LINK	EA	2	
607-P1007	LINE POST, 7' X 1 1/2" GALVANIZED STEEL	EA	171	
607-P2008	BRACE POST, 7 1/2' X 2" GALVANIZED STEEL	EA	15	
607-P2017	BRACE POST, 5' X 2 1/2" GALVANIZED STEEL	EA	2	
607-P3003	GATE POST, 8' X 2 1/2" GALVANIZED STEEL	EA	4	
609-B001	CONCRETE CURB, HEADER	LF	1075	
609-B004	CONCRETE CURB, SPECIAL DESIGN HEADER	LF	944	
609-D002	COMBINATION CONCRETE CURB AND GUTTER TYPE 2	LF	443	
609-D008	COMBINATION CONCRETE CURB AND GUTTER TYPE 3A	LF	493	
615-A012	CONCRETE TYPE IV MODIFIED, 42" HEIGHT, CAST-IN-PLACE MEDIAN BARRIER	LF	548	
615-A018	CONCRETE BRIDGE END BARRIER, 33.5"	LF	40	
615-A020	CONCRETE TYPE III MODIFIED CAST-IN-PLACE MEDIAN BARRIER, 42" HIGH	LF	269	
615-A022	CONCRETE PIER PROTECTION BARRIER, 54"	LF	190	
907-616-C002	COLORLED AND IMPRINTED CONCRETE MEDIAN AND ISLAND PAVEMENT, 6-INCH THICKNESS	SF	6000	
907-616-C003	COLORLED AND IMPRINTED CONCRETE MEDIAN AND ISLAND PAVEMENT, 10-INCH THICKNESS	SF	238	
907-616-C004	COLORLED AND IMPRINTED CONCRETE MEDIAN AND ISLAND PAVEMENT, 4-INCH THICKNESS	SF	1290	
907-617-A001	RIGHT-OF-WAY MARKER	EA	14	
907-618-A001	MAINTENANCE OF TRAFFIC	LS	100%	
619-A1001	TEMPORARY TRAFFIC STRIPE, CONTINUOUS WHITE	LF	2818	
619-A2001	TEMPORARY TRAFFIC STRIPE, CONTINUOUS YELLOW	LF	3835	
619-A3001	TEMPORARY TRAFFIC STRIPE, SKIP WHITE	LF	120	

①
②
③
④
⑤
⑥
⑦
⑧
⑨
⑩
⑪
⑫
⑬
⑭
⑮
⑯
⑰
⑱
⑲
⑳
㉑
㉒
㉓
㉔
㉕
㉖
㉗
㉘
㉙
㉚
㉛
㉜
㉝
㉞
㉟
㊱
㊲
㊳
㊴
㊵
㊶
㊷
㊸
㊹
㊺
㊻
㊼
㊽
㊾
㊿

- ① ESTIMATED QUANTITY, ACTUAL QUANTITY MAY VARY AS DIRECTED BY THE ENGINEER
- ② THESE QUANTITIES ARE TO BE USED AS DIRECTED BY THE ENGINEER TO REPLACE THE SPRING FILTERS BETWEEN STATIONS 615+00 AND 625+00.
- ③ LENGTH OF GUARDRAIL REQUIRED IS BASED ON A TERMINAL SECTION OF 37.5 FEET BEING USED. FOR ANY OTHER LENGTH TERMINAL SECTION, THE LENGTH OF NORMAL GUARDRAIL WILL BE ADJUSTED.
- ④ FLEAT-350, REGENT, SRT-350, ROSS-350 OR APPROVED FLARED EQUAL TO BE INSTALLED FOLLOWING MANUFACTURER'S RECOMMENDATIONS. CONTRACTOR SHALL PROVIDE TWO COPIES OF MANUFACTURER'S INSTALLATION DETAILS TO THE PROJECT ENGINEER. THE ENGINEER SHALL KEEP ONE COPY IN PROJECT FILE AND PROVIDE ONE COPY TO DISTRICT MAINTENANCE ENGINEER. THE INSTALLATION DETAILS SHALL BE ENGINEERING DRAWINGS, A MINIMUM OF 11" x 17" IN SIZE. REFLECTIVE ADHESIVE SHEETING WITH ALTERNATING BLACK AND YELLOW STRIPES (SLOPING DOWNWARD AT AN ANGLE OF 45 DEGREES IN THE DIRECTION TRAFFIC IS TO PASS) IS REQUIRED ON THE END OF THE TERMINAL SECTION. THE TYPE OF TERMINAL ERECTED SHALL BE WRITTEN ON THE BACK OF THE TERMINAL WITH A SANFORD MEANSTREAK WATERPROOF FORMULA PERMANENT MARKING STICK OR SOME OTHER MEANS OF PERMANENT IDENTIFICATION.
- ⑤ QUANTITY INCLUDES 3 CY FOR SIGN FOOTINGS.
- ⑥ QUANTITY INCLUDES 505 LBS FOR SIGN FOOTINGS.

7/1/2014 2:16 PM SQS-SH.DGN

6/20/14	ADDED PAY ITEM, UPDATED QUANTITY, AND ADDED & EDITED FOOTNOTE	IBL	BY	MISSISSIPPI DEPARTMENT OF TRANSPORTATION
				SUMMARY OF QUANTITIES
				PROJECT NO.: HSIP-0020-01(191)
				RANKIN COUNTY
				FILENAME: SQS-SH.DGN
				DESIGN TEAM LEHMAN CHECKED DATE



WORKING NUMBER
SQ-3

SHEET NUMBER
19

SUMMARY OF QUANTITIES (SHEET 6)

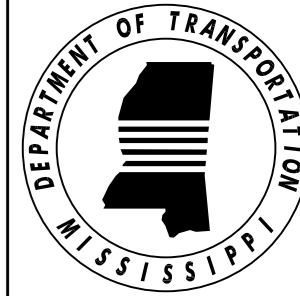
PAY ITEM NO.	PAY ITEM	UNIT	PRELIMINARY	FINAL
686-A001	RELOCATION OF EXISTING LIGHTING ASSEMBLIES	EA	1	
907-699-A002	ROADWAY CONSTRUCTION STAKES	LS	100%	
815-A007	LOOSE RIPRAP, SIZE 150	TON	165	
815-A009	LOOSE RIPRAP, SIZE 300	TON	1366	
815-E001	GEOTEXTILE UNDER RIPRAP	SY	875	
907-815-F001	SEDIMENT CONTROL STONE	TON	239	
907-899-A001	RAILWAY-HIGHWAY PROVISIONS	LS	100%	
907-825-A001	SOIL NAIL RETAINING WALLS	SF	6560	
907-825-B001	SOIL NAIL VERIFICATION TESTS	EA	5	
907-825-C001	SOIL NAIL PROOF TESTS	EA	35	

① THE CONCRETE FACE OF THE SOIL NAIL WALL SHALL BE CONTRACTOR DESIGNED ACCORDING TO SPECIAL PROVISION NO. 907-825-1. A TWO (2) INCH CLEARANCE IS REQUIRED BETWEEN THE FORM LINER AND REINFORCING.

⚠

① ⚠

7/1/2014 2:16 PM SQS.SH.DGN

CHANGED	QUANTITY	BY	REVISION	MISSISSIPPI DEPARTMENT OF TRANSPORTATION SUMMARY OF QUANTITIES PROJ. NO.: HSIP-0020-01(191) COUNTY: RANKIN FILENAME: SQS_SH.DGN DESIGN TEAM: LEHMAN CHECKED: _____ DATE: _____
6/30/14	DATE			MISSISSIPPI DEPARTMENT OF TRANSPORTATION  WORKING NUMBER: SQ-6 SHEET NUMBER: 22

BRIDGE END PAVEMENT REQUIRED

WORK NO.	BRIDGE ABUT. STATION	W ₁	W ₂	W _B	W	A	B	ANGLE "Z"	PAV'MT.	JOINT	33.5" RAIL	42" RAIL	TRANSVERSE GROOVING	REMARKS
4	237 + 40	30	10	40	42.83	20	20	0	93.15	42.83	20			
4	244 + 10	30	10	40	42.83	20	20	0	93.15	42.83	20			

ESTIMATED EROSION CONTROL ITEMS

WK. SH. NO.	STATION	DITCH LINER	CONCRETE PAVED DITCH	SOLID SOD	EROSION CHECKS	SILT FENCE	RIPRAP (150 LB/SF)	REMARKS
4		100'						
4	237 + 31.19 LT		3.23	27.56				PAVED FLUME
4	242 + 50.00 RT						46.07	
4	244 + 08.71 LT		3.50	29.78				PAVED FLUME
4	249 + 51.52 RT		1.71	83.56				
4	248 + 50.00 RT		11.50	97.77				
7LT	28 + 55.00 LT		1.32	12.00				
7LT	28 + 65.00 LT						18.75	
7RT	27 + 90.00 RT						11.25	
8LT	31 + 85.00 LT						15.00	
8LT	32 + 00.00 LT						7.50	
8RT	31 + 60.00 RT						9.00	
8RT	32 + 00.00 RT						11.25	
9	49 + 25.00 RT						46.23	
ECP-4						556		
TOTAL			21.26	250.67		556	165.05	
UNIT			CU.YD.	SQ.YD.		LIN. FT.	TON	

SILT BASINS REQUIRED

WORK NO.	STATION	TYPE "D" SILT BASIN	LENGTH	HEIGHT	RIPRAP (SIZE 300)	SEDIMENT CONTROL STONE	GEOTEXTILE UNDER RIPRAP	REMARKS
3	615 + 00.00	1	75'	6'	486.00	70.31	250.00	REQUIRED LEFT
3	232 + 25.00	1	40'	6'	259.20	37.50	133.33	REQUIRED LEFT
3	234 + 00.00	1	75'	6'	486.00	70.31	250.00	REQUIRED LEFT
4	242 + 00.00	1	75'	3'	135.00	28.13	125.00	REQUIRED LEFT
UNIT	EA.	LIN. FT.	LIN. FT.	TONS	TONS	SQ.YD.		
TOTAL	6	330'	31'	1,366.20	239.07	875.00		

GUARD RAIL REQUIRED

WORK NO.	STATION	STATE STD. (INSTAL.)	GUARD RAIL LENGTHS				CABLE ANCHOR. TYPE "1"	TERMINAL SECTION	BR. END SECTION TYPE "1"	WHITE DELIN.	YELLOW DELIN.	REMARKS
			DIST. 5	DIST. B	DIST. C	DIST. D						
4	244 + 06.00		275'				2	2	11			
7RT	38 + 32.00		12.5'				1	1				
8LT	31 + 61.00		12.5'				1	1				
TOTALS			300'				4	4				

NOTE (I): LENGTH OF GUARDRAIL REQUIRED IS BASED ON A TERMINAL SECTION LENGTH OF 37.5 FT. THE LENGTH OF GUARDRAIL REQUIRED SHALL BE ADJUSTED WHENEVER A TERMINAL SECTION WITH A LENGTH OTHER THAN 37.5 FT. IS USED. (EX.-TERMINAL LENGTH OF 50 FT. WILL REQUIRE 12.5 FT. TO BE DEDUCTED FROM THE LENGTH OF GUARDRAIL.)

NOTE (II): THE "A" AND "C" DIMENSIONS FOR THE INSTALLATION OF GUARDRAIL ARE 205.6458 FT. AND 105.6458 FT.

6/28/24 DATE	CHANGED QUANTITY AND TOTAL	REVISION	MISSISSIPPI DEPARTMENT OF TRANSPORTATION	
			ESTIMATED QUANTITIES BRIDGE END PAVEMENT, SILT BASINS GUARD RAIL, & EROSION CONTROL ITEMS	
RANKIN COUNTY			PROJECT NO.: HSIP-0020-01(191)	
FILENAME: equan.dgn			WORKING NUMBER	EQ-3
DESIGN TEAM: LEHMAN			CHECKED: _____	SHEET NUMBER
			DATE: _____	25

7/1/2024 2:17 PM EQUAN.DGN MISSISSIPPI DEPARTMENT OF TRANSPORTATION

SUMMARY OF DRAINAGE STRUCTURES REQUIRED

Main summary table with columns for Work Sheet No., Station, Pipe Collar, Circular Pipes, Circular Flared End Section, Arch Pipes, Arch Flared End Section, Size of Inlet, No. & Size of Pipe Openings, Drawing Req'd., Class B Struct. Cong., Reinf. Steel, Paved Apron, Gratings, Castings, Cover Over Pipe, Class, Struct. Excav., Filter Material, and Remarks. Includes data for sheets 3, 4, 7LT, 8LT, and 9.

Summary row with columns for Units (Each), L.F., EA., CU. YD., LBS., and a triangle symbol. Totals: 2, 3, 1, 1, 170, 332, 8, 212, 5, 5, 1, 3, 170, 332, 8, 212, 5, 5, 1, 3, 170, 332, 8, 212, 5, 5, 1, 3, 12.38, 1008, 250, 227.77.

7/1/2014 2:17 PM EQUAN.DGN

MISSISSIPPI DEPARTMENT OF TRANSPORTATION SUMMARY OF DRAINAGE STRUCTURES. COUNTY: RANKIN. PROJ. NO.: HSIP-0020-01(191). WORKING NUMBER EQ-4. SHEET NUMBER 26. Includes logo and revision table.

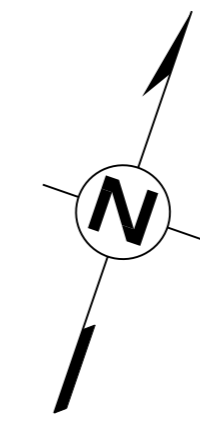
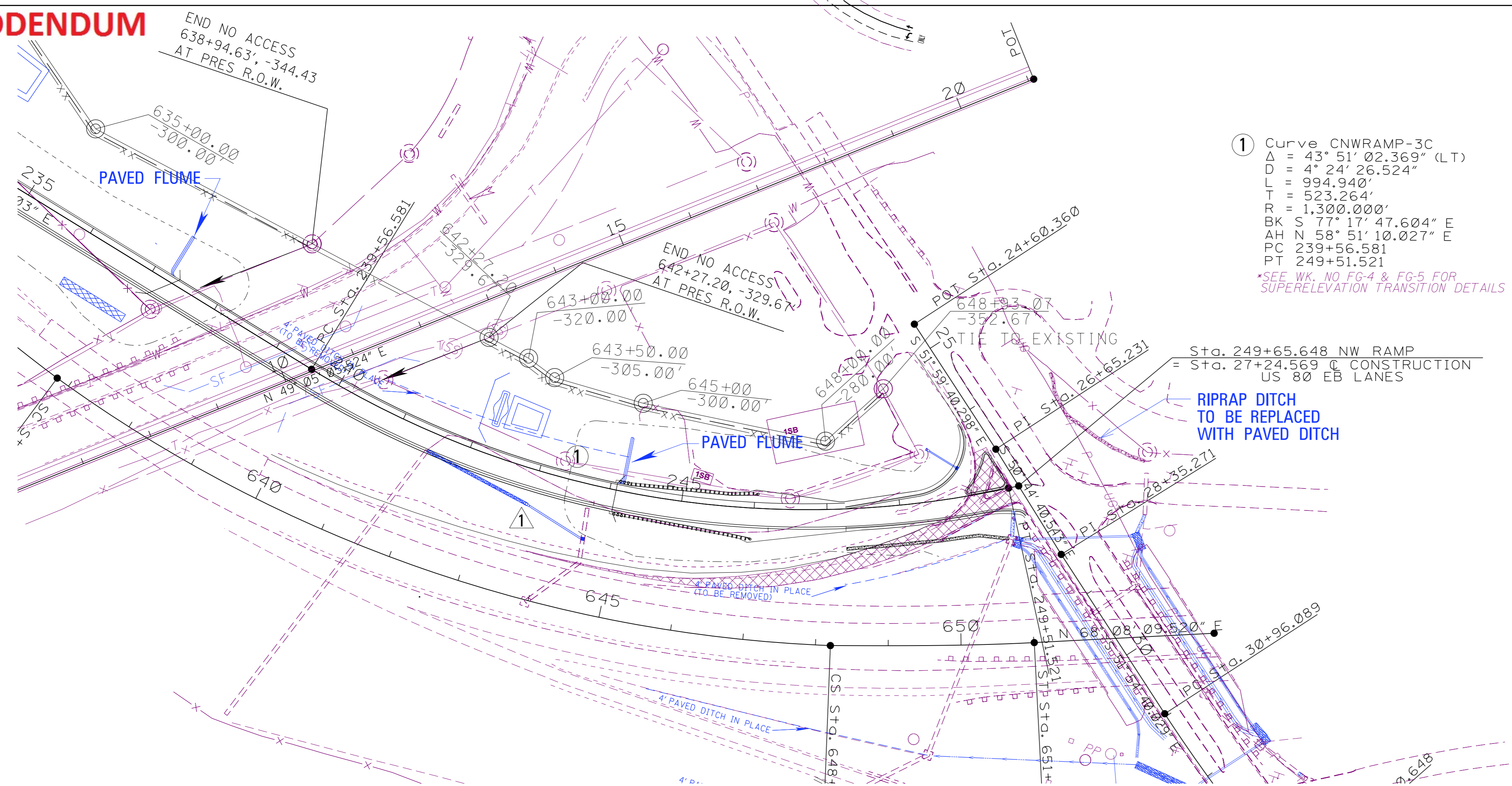
ADDENDUM

STATE	PROJECT NO.
MISS.	HSIP-0020-01(191)

REVISIONS	
DATE	BY
6/30/14	TBL

▲ ADDED DRAINAGE PIPE NOTE, REVISED DITCH STATION LIMITS, INCLUDED PROPOSED ROW

① Curve CNWRAMP-3C
 $\Delta = 43^\circ 51' 02.369''$ (LT)
 $D = 4^\circ 24' 26.524''$
 $L = 994.940'$
 $T = 523.264'$
 $R = 1,300.000'$
 BK S $77^\circ 17' 47.604''$ E
 AH N $58^\circ 51' 10.027''$ E
 PC 239+56.581
 PT 249+51.521
 *SEE WK. NO. FG-4 & FG-5 FOR SUPERELEVATION TRANSITION DETAILS

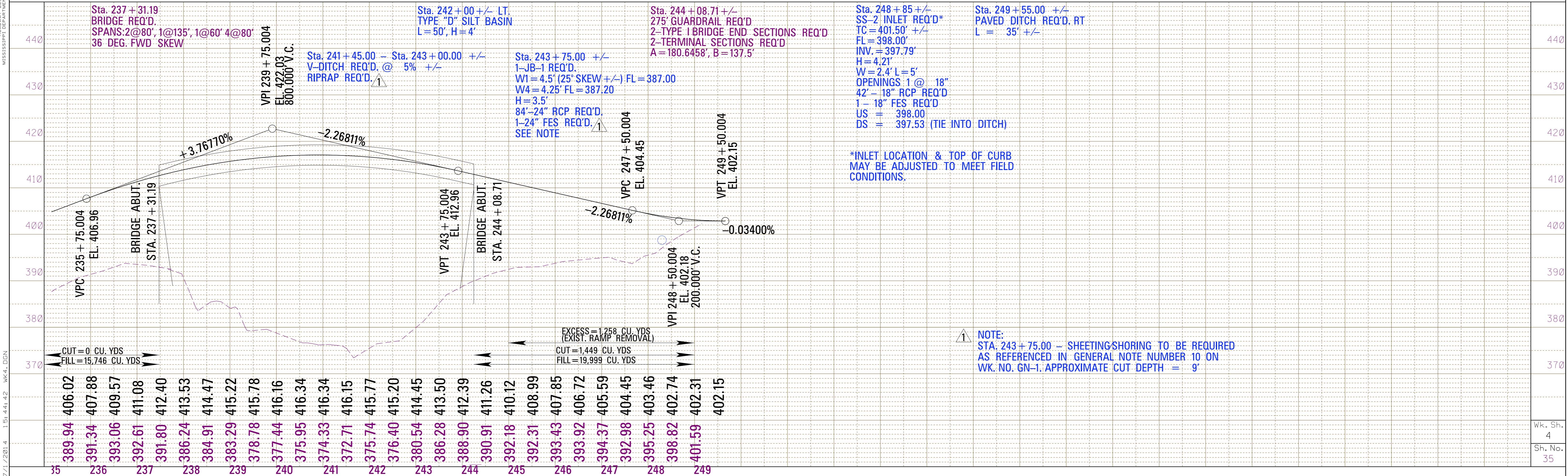


INDICATES REMOVAL OF CONCRETE/ASPHALT PAVEMENT

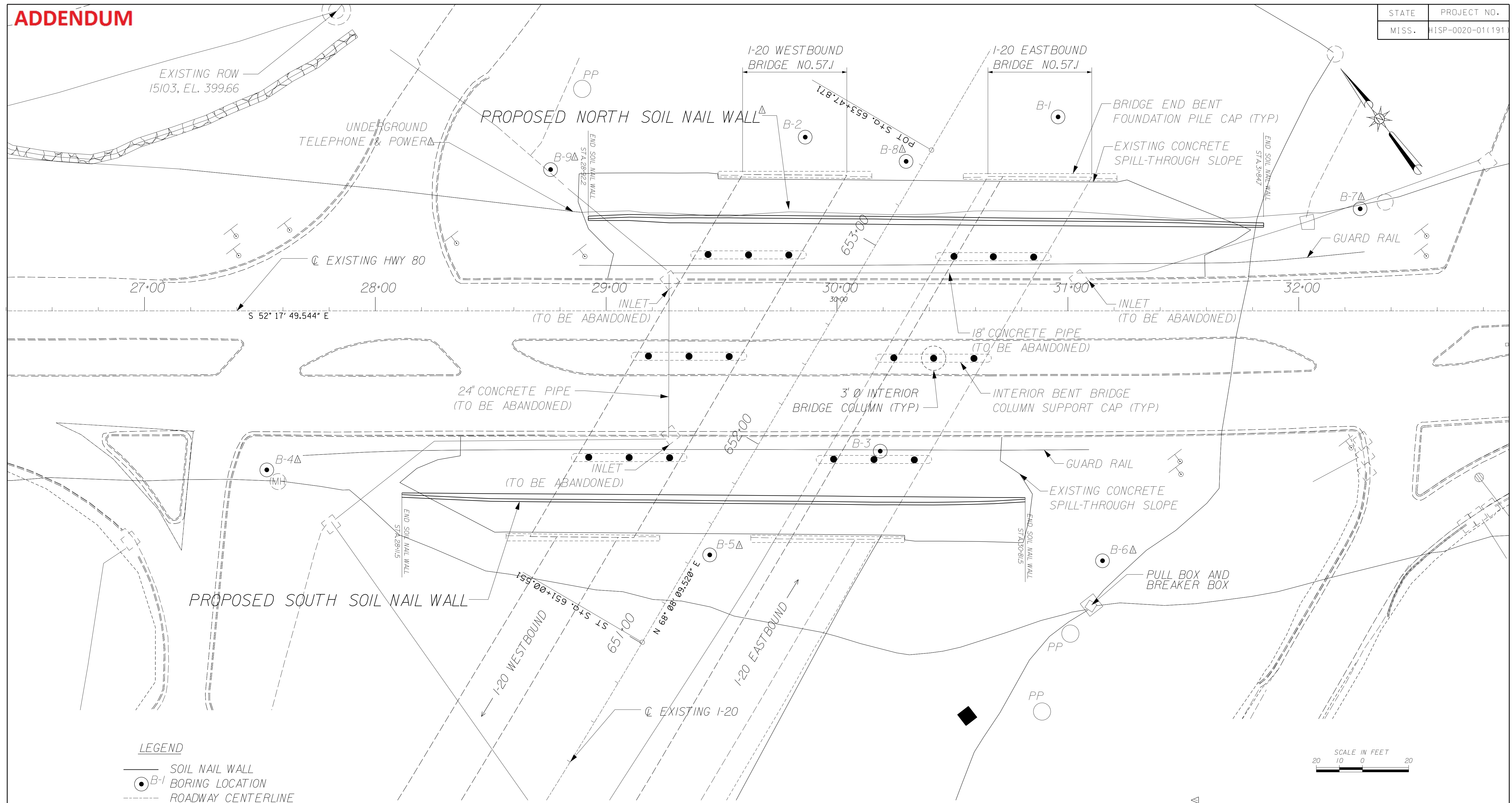
EROSION CONTROL ITEMS	UNITS	SYMBOL	TOTALS
DITCH LINER	S.Y.		
SOIL REINF. MATERIAL	S.Y.		
PAVED DITCH	C.Y.		20
RIP RAP	TON		46
SILT FENCE	L.F.		556
SUPER SILT FENCE	L.F.		
GEOTEXTILE	S.Y.		
SOLID SOD	S.Y.		172
EROSION CHECKS	BALE		

EARTHWORK TOTAL THIS SHEET		
Cut	1,449	Cu.Yds
Fill	35,745	Cu.Yds
Excess	1,258	Cu.Yds
Surplus	0	Cu.Yds
Borrow (B-15)	0	Cu.Yds

L. W. KENNEL
ROADWAY DESIGN DIVISION
MISSISSIPPI DEPARTMENT OF TRANSPORTATION



7.1.2201.4 1.5x.44x.42 WK-4.DGN



LEGEND

- SOIL NAIL WALL
- B-1 BORING LOCATION
- - - ROADWAY CENTERLINE
- CONCRETE SLOPE PAVING
- BRIDGE COLUMN SUPPORT
- - - BRIDGE SUPPORT STRUCTURE
- - - EDGE OF PAVEMENT
- STORM SEWER
- - - DRAINAGE CHANNEL
- UNDERGROUND POWER AND TELEPHONE
- PP POWER POLE
- GUARD RAIL
- ⊥ ROADWAY SIGN

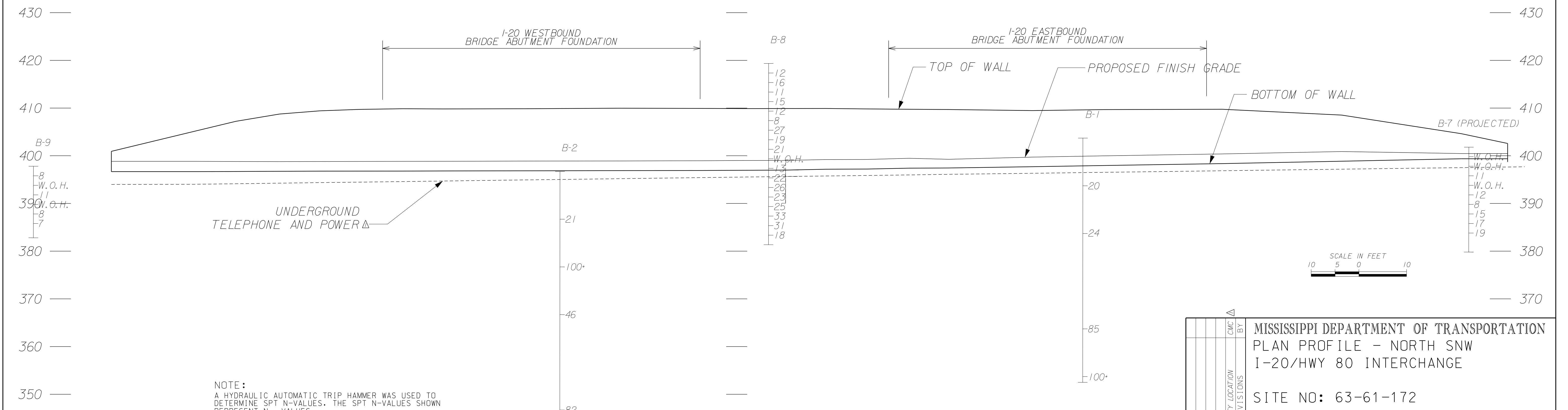
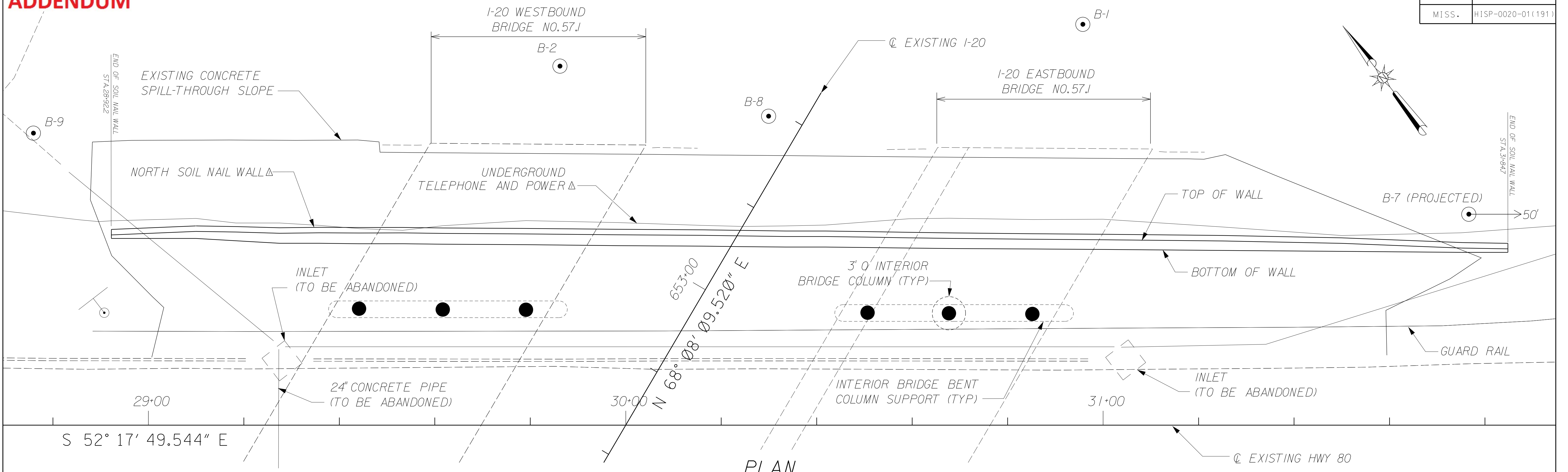
PLAN



6-30-14 NORTH SNW UTILITY LOC. BORINGS C/MC BY DATE REVISIONS	MISSISSIPPI DEPARTMENT OF TRANSPORTATION PLAN - SOIL NAIL WALLS I-20/HWY 80 INTERCHANGE	
	SITE NO: 63-61-172 105536/301000	
	PROJECT NO: HISP-0020-01(191) COUNTY: RANKIN	
	DESIGNED: C.M.C. DATE: _____ CHECKED: M.L.S. DATE: 06-19-14	DETAILED: C.M.C. DRAWN: CADD ISSUED: R.S.F. DATE: 06-19-14
WORKING NUMBER SNW-1		SHEET NUMBER 130

ADDENDUM

STATE	PROJECT NO.
MISS.	HISP-0020-01(191)



NOTE:
A HYDRAULIC AUTOMATIC TRIP HAMMER WAS USED TO DETERMINE SPT N-VALUES. THE SPT N-VALUES SHOWN REPRESENT N₆₀ VALUES

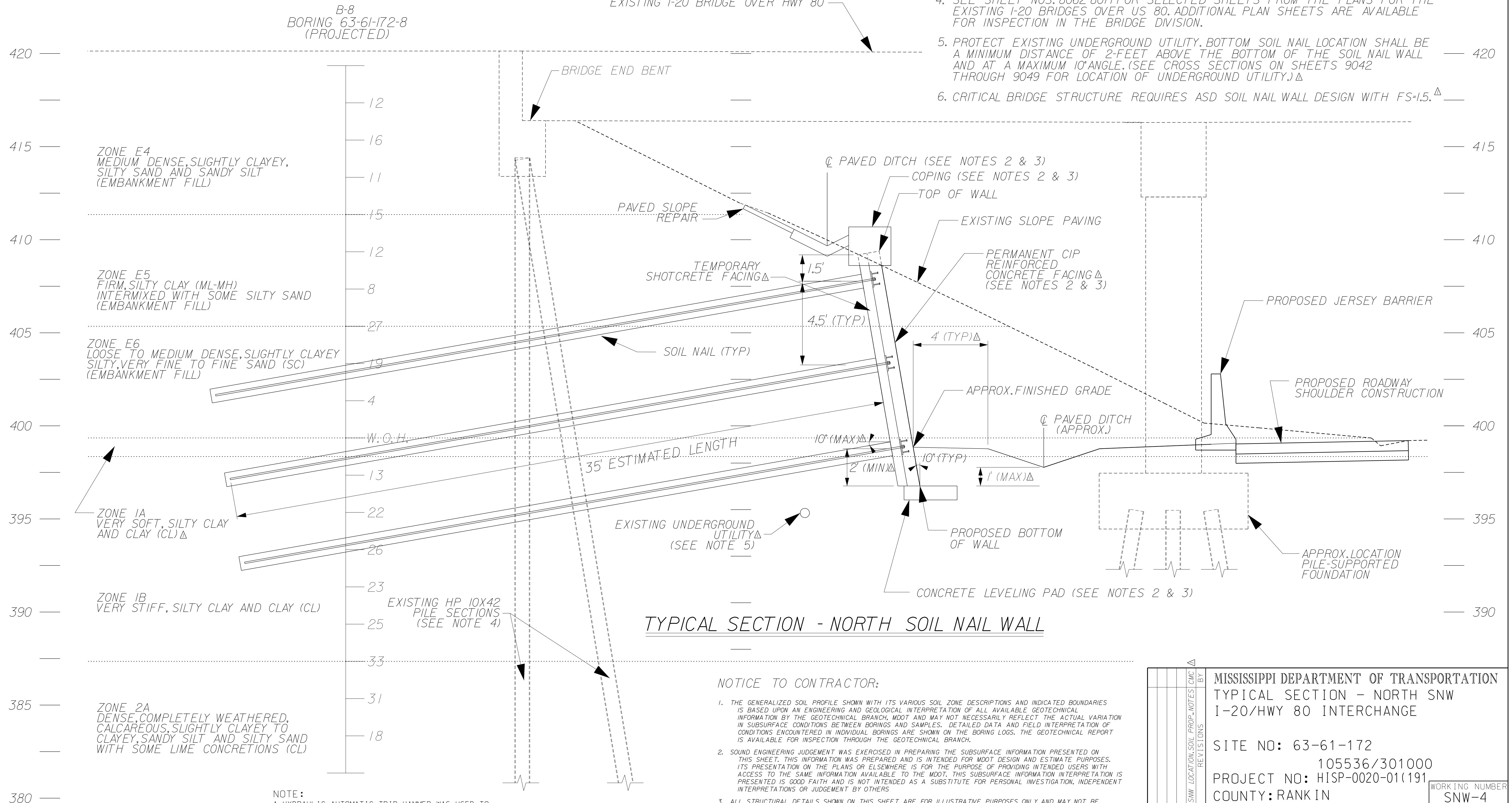
MISSISSIPPI DEPARTMENT OF TRANSPORTATION	
PLAN PROFILE - NORTH SNW	
I-20/HWY 80 INTERCHANGE	
SITE NO: 63-61-172	
105536/301000	
PROJECT NO: HISP-0020-01(191)	
COUNTY: RANKIN	
DESIGNED: C.M.C.	DATE: 06-19-14
DETAILED: C.M.C.	ISSUED: R.S.F.
DRAWN: CADD	DATE: 06-19-14
CHECKED: R.S.F.	DATE: 06-19-14
DATE: 06-19-14	DATE: 06-19-14
WORKING NUMBER	SHEET NUMBER
SNW-2	131

ADDENDUM

ZONE	C' (psf)	ϕ '	γ (pcf)
E4	0	29°	120
E5	0	29°	120
E6	0	29°	120
1A	0	20°	124
1B	0	27°	124
2A	0	30°	124

NOTES:

- BRIDGE DETAILS FOR INFORMATION ONLY.
- PAY ITEM NO. 907-825-A001 INCLUDES PERMANENT WALL FACING, CONCRETE LEVELING PAD, WALL COPING, AND PAVED DITCH.
- PERMANENT WALL FACING, CONCRETE LEVELING PAD, WALL COPING, AND PAVED DITCH DESIGN AND SUBMITTALS TO BE PROVIDED WITH SOIL NAIL WALL DESIGN SUBMITTALS IN ACCORDANCE WITH SPECIAL PROVISION SP-907-825-1 "SOIL NAIL RETAINING WALLS".
- SEE SHEET NOS. 8062-8071 FOR SELECTED SHEETS FROM THE PLANS FOR THE EXISTING I-20 BRIDGES OVER US 80. ADDITIONAL PLAN SHEETS ARE AVAILABLE FOR INSPECTION IN THE BRIDGE DIVISION.
- PROTECT EXISTING UNDERGROUND UTILITY. BOTTOM SOIL NAIL LOCATION SHALL BE A MINIMUM DISTANCE OF 2-FEET ABOVE THE BOTTOM OF THE SOIL NAIL WALL AND AT A MAXIMUM 10° ANGLE. (SEE CROSS SECTIONS ON SHEETS 9042 THROUGH 9049 FOR LOCATION OF UNDERGROUND UTILITY.) Δ
- CRITICAL BRIDGE STRUCTURE REQUIRES ASD SOIL NAIL WALL DESIGN WITH $FS=1.5$. Δ



NOTE:
A HYDRAULIC AUTOMATIC TRIP HAMMER WAS USED TO DETERMINE SPT N-VALUES. THE SPT N-VALUES SHOWN REPRESENT N_{60} VALUES

NOTICE TO CONTRACTOR:

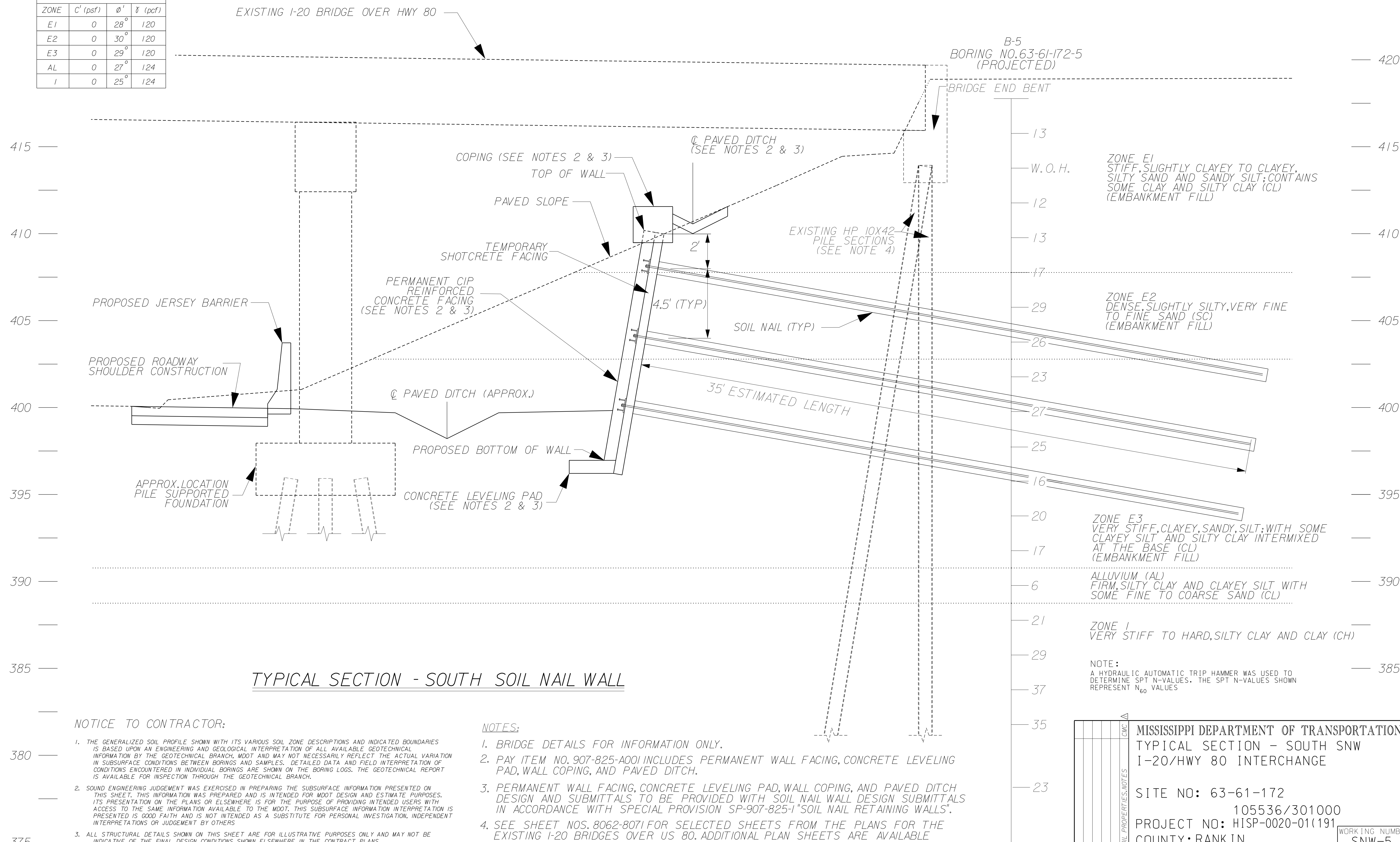
- THE GENERALIZED SOIL PROFILE SHOWN WITH ITS VARIOUS SOIL ZONE DESCRIPTIONS AND INDICATED BOUNDARIES IS BASED UPON AN ENGINEERING AND GEOLOGICAL INTERPRETATION OF ALL AVAILABLE GEOTECHNICAL INFORMATION BY THE GEOTECHNICAL BRANCH, MDT AND MAY NOT NECESSARILY REFLECT THE ACTUAL VARIATION IN SUBSURFACE CONDITIONS BETWEEN BORINGS AND SAMPLES. DETAILED DATA AND FIELD INTERPRETATION OF CONDITIONS ENCOUNTERED IN INDIVIDUAL BORINGS ARE SHOWN ON THE BORING LOGS. THE GEOTECHNICAL REPORT IS AVAILABLE FOR INSPECTION THROUGH THE GEOTECHNICAL BRANCH.
- SOUND ENGINEERING JUDGEMENT WAS EXERCISED IN PREPARING THE SUBSURFACE INFORMATION PRESENTED ON THIS SHEET. THIS INFORMATION WAS PREPARED AND IS INTENDED FOR MDT DESIGN AND ESTIMATE PURPOSES. ITS PRESENTATION ON THE PLANS OR ELSEWHERE IS FOR THE PURPOSE OF PROVIDING INTENDED USERS WITH ACCESS TO THE SAME INFORMATION AVAILABLE TO THE MDT. THIS SUBSURFACE INFORMATION INTERPRETATION IS PRESENTED IN GOOD FAITH AND IS NOT INTENDED AS A SUBSTITUTE FOR PERSONAL INVESTIGATION, INDEPENDENT INTERPRETATIONS OR JUDGEMENT BY OTHERS.
- ALL STRUCTURAL DETAILS SHOWN ON THIS SHEET ARE FOR ILLUSTRATIVE PURPOSES ONLY AND MAY NOT BE INDICATIVE OF THE FINAL DESIGN CONDITIONS SHOWN ELSEWHERE IN THE CONTRACT PLANS.
- BRIDGE PLAN PROFILE STATIONING MAY NOT BE THE FINAL DESIGN (SEE NOTICE TO CONTRACTOR NOTE 3).

DATE	BY	REVISIONS		MISSISSIPPI DEPARTMENT OF TRANSPORTATION TYPICAL SECTION - NORTH SNW I-20/HWY 80 INTERCHANGE SITE NO: 63-61-172 105536/301000 PROJECT NO: HISP-0020-01(191) COUNTY: RANKIN
		6-30-14	SWW	
DESIGNED:	C.M.C.	DATE:		SHEET NUMBER 133
DRAWN:	CADD	ISSUED:	R.S.F.	DATE: 06-19-14

ADDENDUM

STATE	PROJECT NO.
MISS.	HISP-0020-01(191)

ESTIMATED SOIL STRENGTHS Δ			
ZONE	C' (psf)	ϕ'	γ (pcf)
E1	0	28°	120
E2	0	30°	120
E3	0	29°	120
AL	0	27°	124
I	0	25°	124



TYPICAL SECTION - SOUTH SOIL NAIL WALL

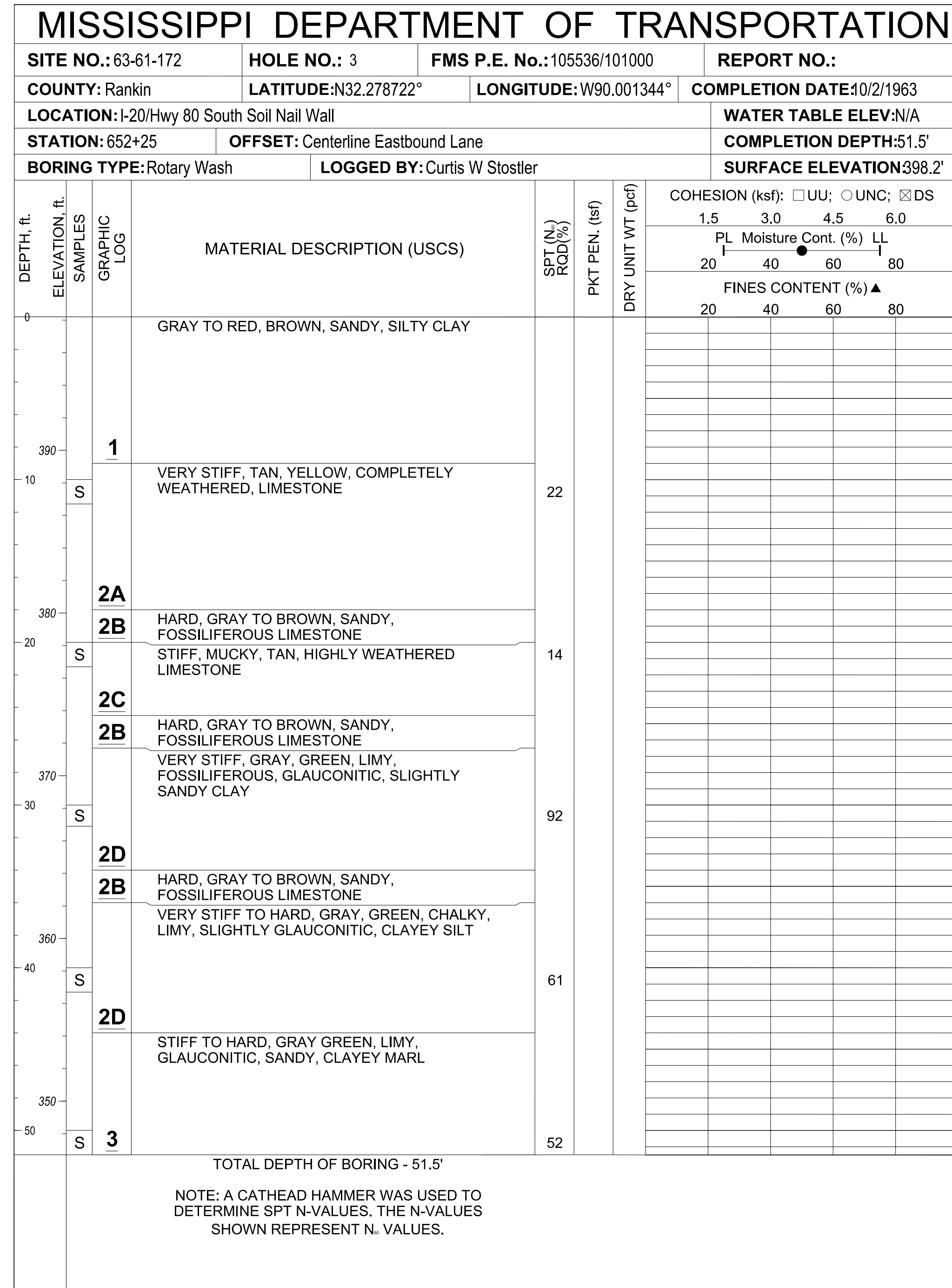
NOTICE TO CONTRACTOR:

- THE GENERALIZED SOIL PROFILE SHOWN WITH ITS VARIOUS SOIL ZONE DESCRIPTIONS AND INDICATED BOUNDARIES IS BASED UPON AN ENGINEERING AND GEOLOGICAL INTERPRETATION OF ALL AVAILABLE GEOTECHNICAL INFORMATION BY THE GEOTECHNICAL BRANCH, MDT AND MAY NOT NECESSARILY REFLECT THE ACTUAL VARIATION IN SUBSURFACE CONDITIONS BETWEEN BORINGS AND SAMPLES. DETAILED DATA AND FIELD INTERPRETATION OF CONDITIONS ENCOUNTERED IN INDIVIDUAL BORINGS ARE SHOWN ON THE BORING LOGS. THE GEOTECHNICAL REPORT IS AVAILABLE FOR INSPECTION THROUGH THE GEOTECHNICAL BRANCH.
- SOUND ENGINEERING JUDGEMENT WAS EXERCISED IN PREPARING THE SUBSURFACE INFORMATION PRESENTED ON THIS SHEET. THIS INFORMATION WAS PREPARED AND IS INTENDED FOR MDT DESIGN AND ESTIMATE PURPOSES. ITS PRESENTATION ON THE PLANS OR ELSEWHERE IS FOR THE PURPOSE OF PROVIDING INTENDED USERS WITH ACCESS TO THE SAME INFORMATION AVAILABLE TO THE MDT. THIS SUBSURFACE INFORMATION INTERPRETATION IS PRESENTED IN GOOD FAITH AND IS NOT INTENDED AS A SUBSTITUTE FOR PERSONAL INVESTIGATION, INDEPENDENT INTERPRETATIONS OR JUDGEMENT BY OTHERS.
- ALL STRUCTURAL DETAILS SHOWN ON THIS SHEET ARE FOR ILLUSTRATIVE PURPOSES ONLY AND MAY NOT BE INDICATIVE OF THE FINAL DESIGN CONDITIONS SHOWN ELSEWHERE IN THE CONTRACT PLANS.
- BRIDGE PLAN PROFILE STATIONING MAY NOT BE THE FINAL DESIGN (SEE NOTICE TO CONTRACTOR NOTE 3).

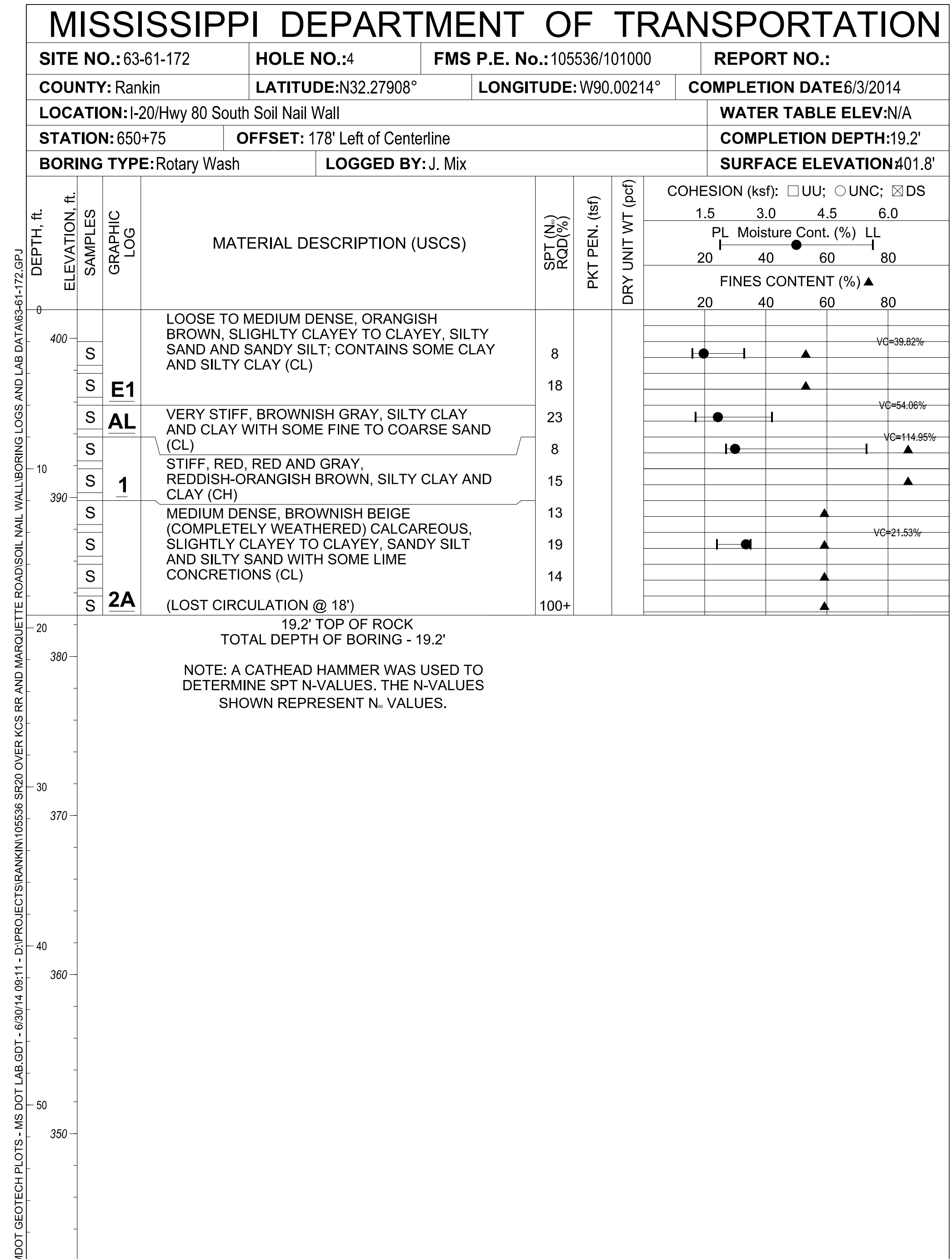
NOTES:

- BRIDGE DETAILS FOR INFORMATION ONLY.
- PAY ITEM NO. 907-825-A001 INCLUDES PERMANENT WALL FACING, CONCRETE LEVELING PAD, WALL COPING, AND PAVED DITCH.
- PERMANENT WALL FACING, CONCRETE LEVELING PAD, WALL COPING, AND PAVED DITCH DESIGN AND SUBMITTALS TO BE PROVIDED WITH SOIL NAIL WALL DESIGN SUBMITTALS IN ACCORDANCE WITH SPECIAL PROVISION SP-907-825-1 "SOIL NAIL RETAINING WALLS".
- SEE SHEET NOS. 8062-8071 FOR SELECTED SHEETS FROM THE PLANS FOR THE EXISTING I-20 BRIDGES OVER US 80. ADDITIONAL PLAN SHEETS ARE AVAILABLE FOR INSPECTION IN THE BRIDGE DIVISION.
- CRITICAL BRIDGE STRUCTURE REQUIRES ASD SOIL NAIL WALL DESIGN WITH $FS = 1.5$.

6-30-14 SOIL PROPERTIES NOTES	MISSISSIPPI DEPARTMENT OF TRANSPORTATION TYPICAL SECTION - SOUTH SNW I-20/HWY 80 INTERCHANGE	
	SITE NO: 63-61-172 105536/301000 PROJECT NO: HISP-0020-01(191) COUNTY: RANKIN	
DESIGNED: C.M.C.	DETAILED: C.M.C.	DRAWN: CADD
CHECKED: M.L.S.	ISSUED: R.S.F.	DATE: 06-19-14
WORKING NUMBER		SHEET NUMBER
SNW-5		134

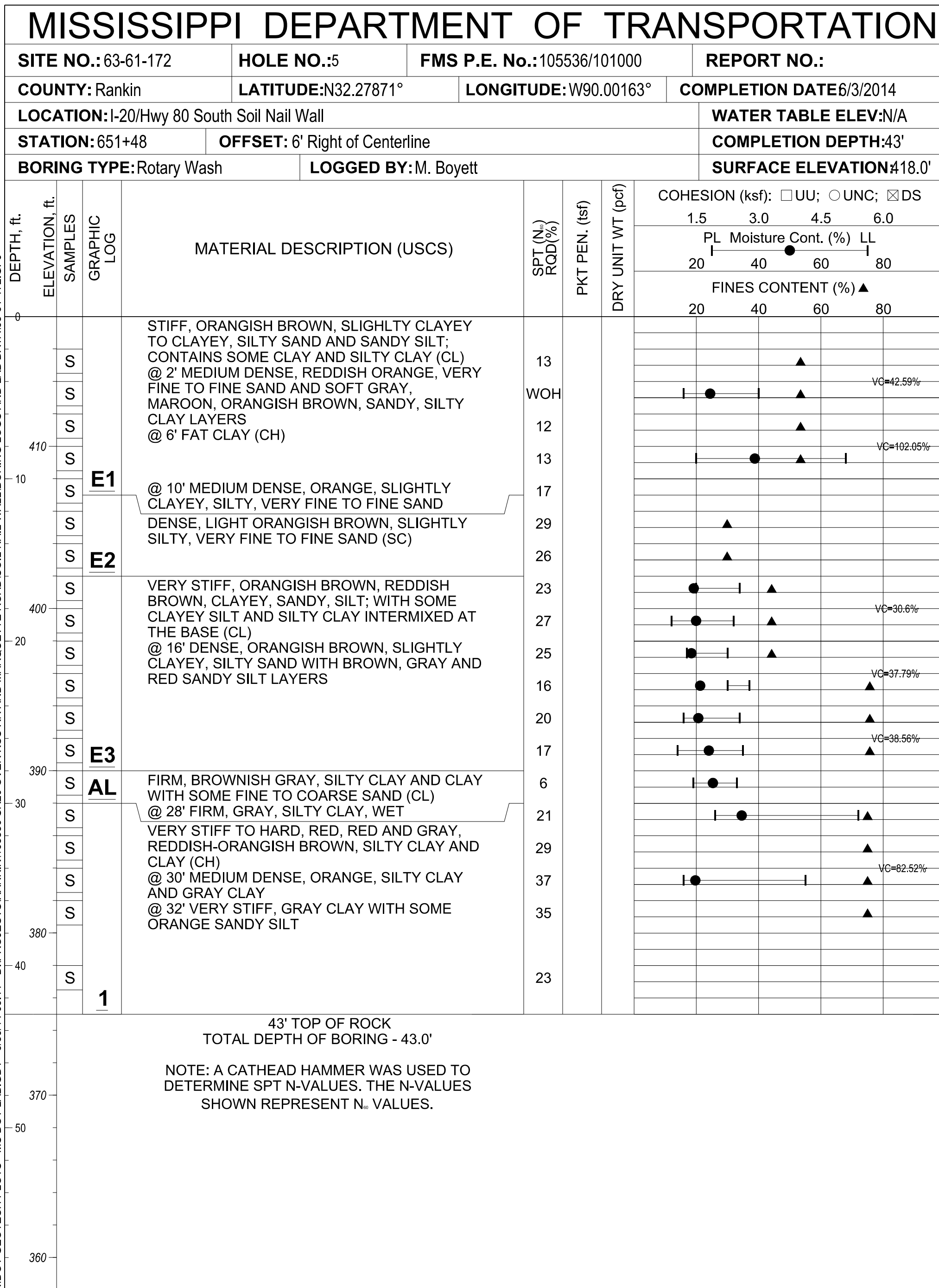


S: Split Spoon, T: Shelby Tube, C: Rock Core, P: Pitcher

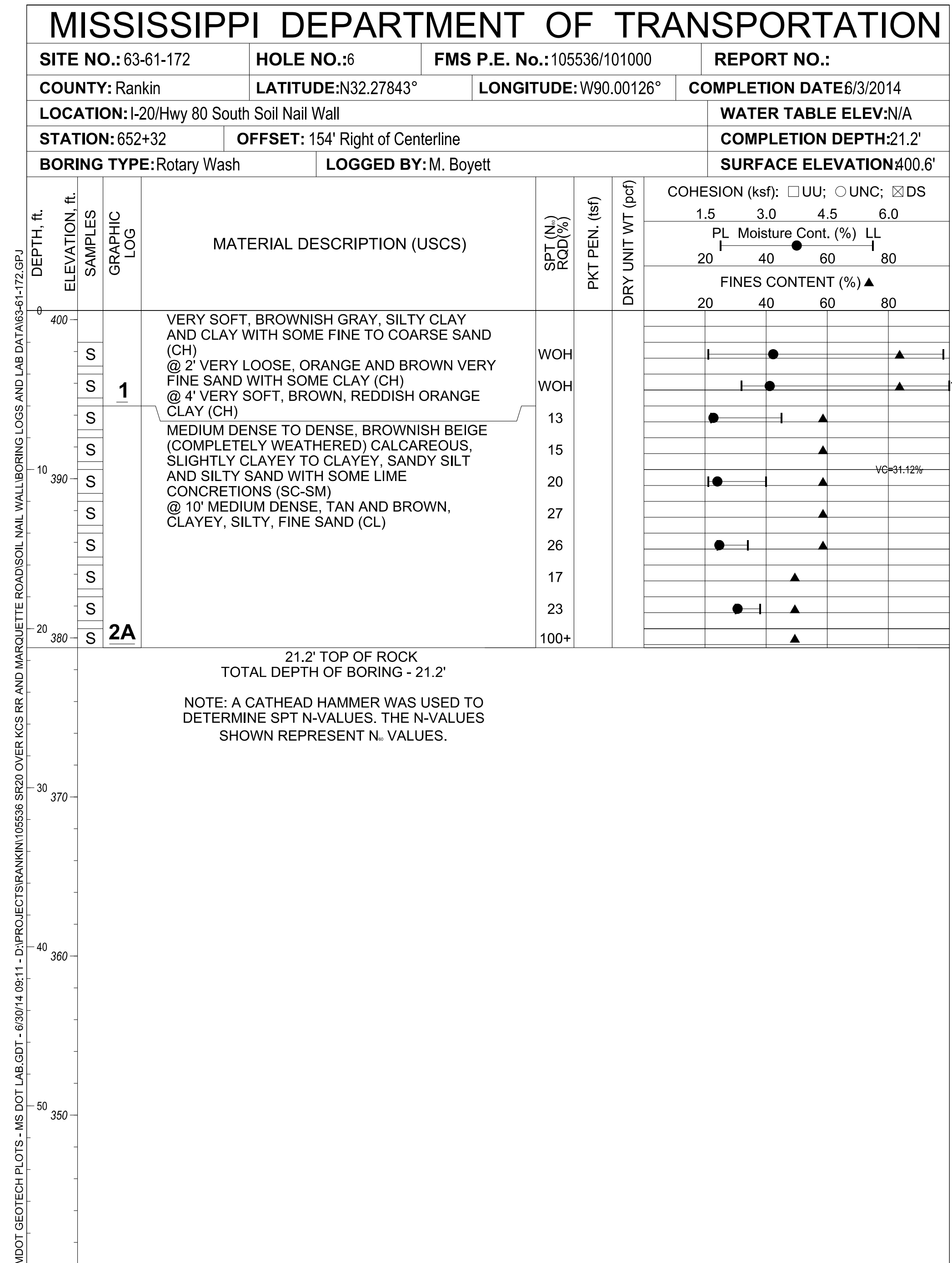


S: Split Spoon, T: Shelby Tube, C: Rock Core, P: Pitcher

6-30-14		X		FINES ADDED		BY		MISSISSIPPI DEPARTMENT OF TRANSPORTATION	
DATE				REVISIONS				BORING LOGS (SHEET 1 OF 5)	
								SOUTH SOIL NAIL WALL	
								I-20/HWY 80 INTERCHANGE	
								SITE NO: 63-61-172	
								105536/301000	
								PROJECT NO: HISP-0020-01(191)	
								COUNTY: RANKIN	
								WORKING NUMBER	
								SNW-8	
								DESIGNED: C.M.C. DETAILED: C.M.C. DRAWN: CADD	
								CHECKED: R.S.F. ISSUED: R.S.F. DATE: 06-19-14	
								SHEET NUMBER	
								137	

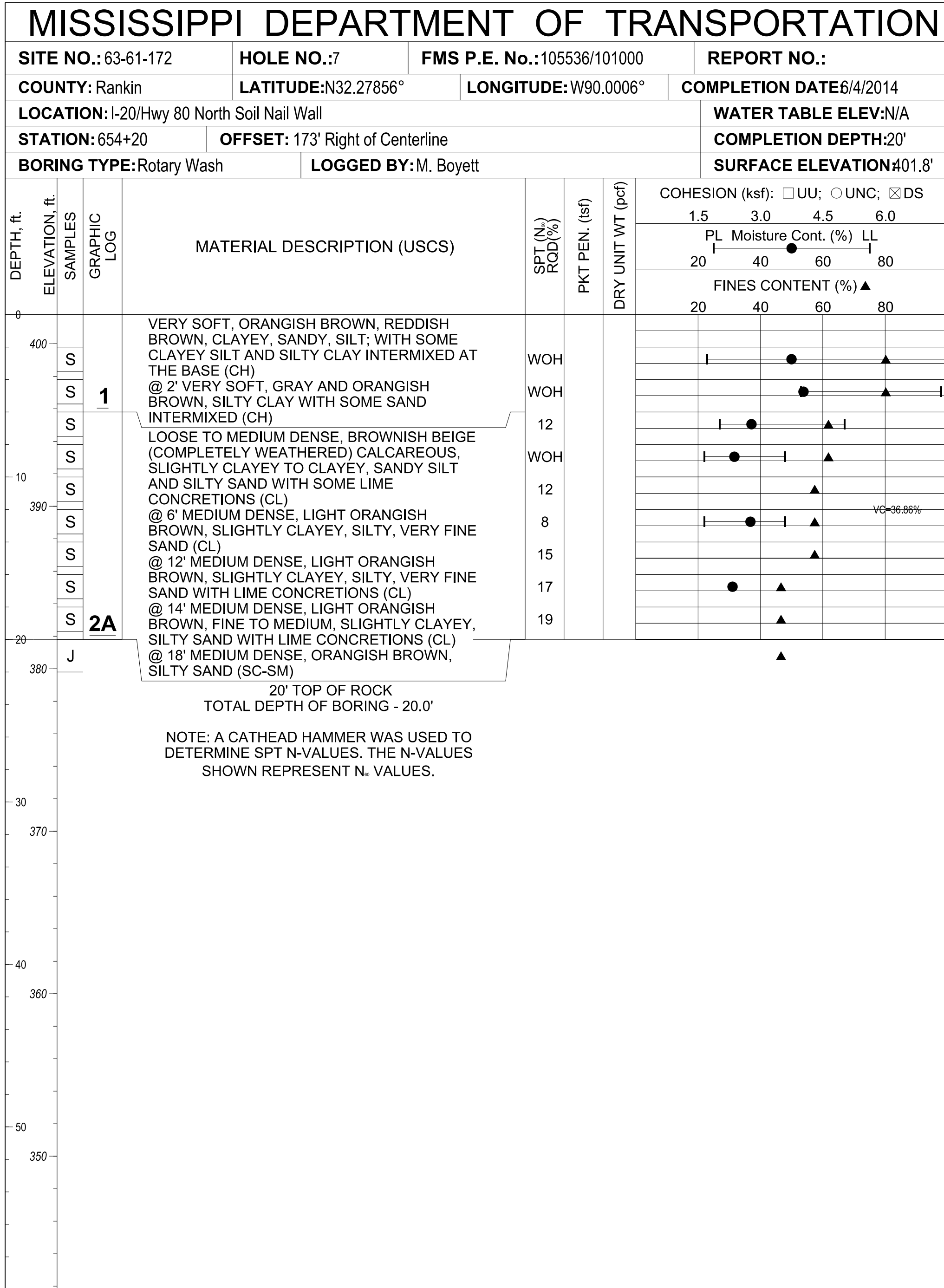


S: Split Spoon, T: Shelby Tube, C: Rock Core, P: Pitcher

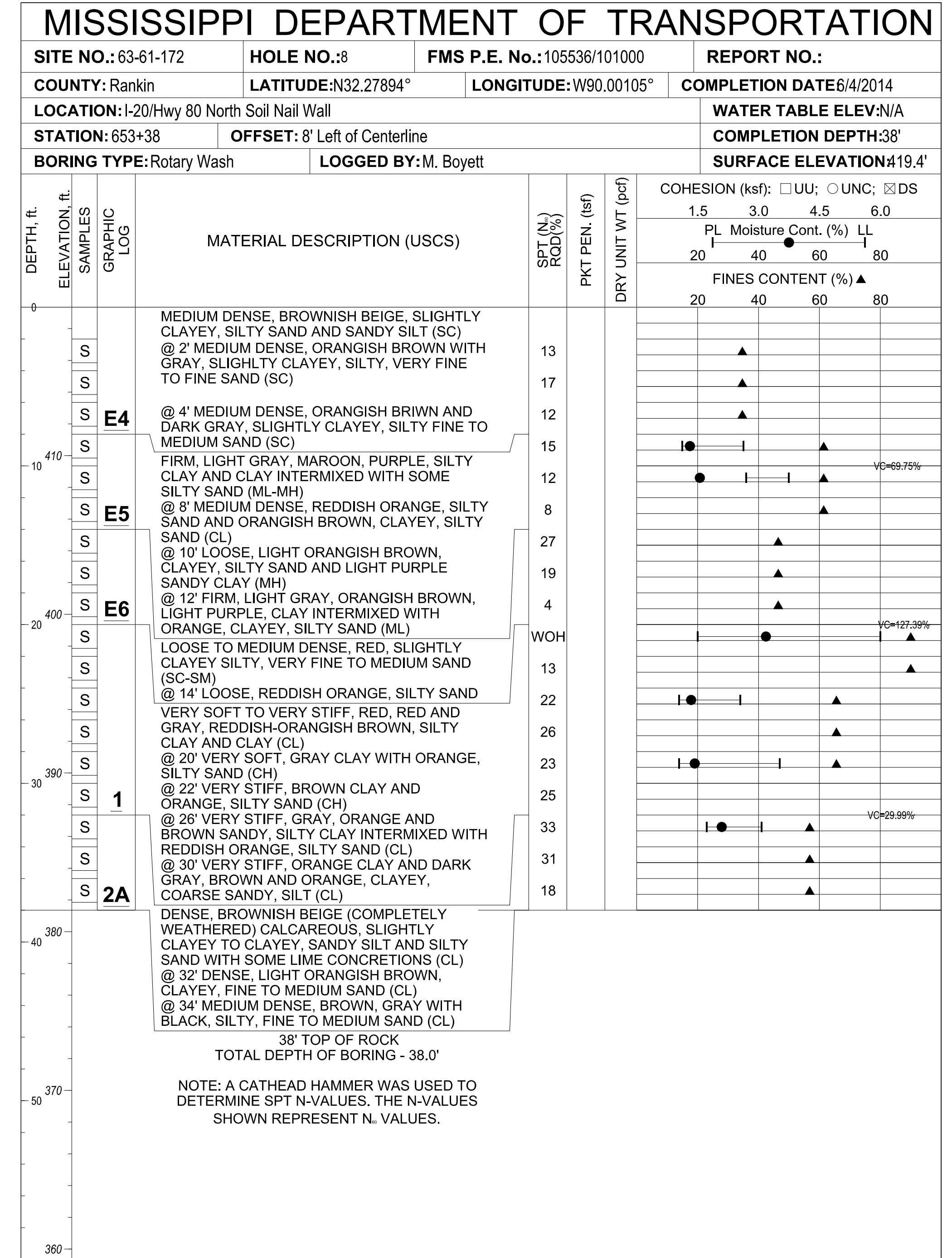


S: Split Spoon, T: Shelby Tube, C: Rock Core, P: Pitcher

MISSISSIPPI DEPARTMENT OF TRANSPORTATION BORING LOGS (SHEET 2 OF 5) SOUTH SOIL NAIL WALL I-20/HWY 80 INTERCHANGE SITE NO: 63-61-172 PROJECT NO: 105536/301000 COUNTY: RANKIN		WORKING NUMBER SNW-9
DESIGNED: C.M.C. CHECKED: R.S.F.	DETAILED: C.M.C. ISSUED: R.S.F.	DRAWN: CADD DATE: 06-19-14
DATE: 6-30-14 X: FINES ADDED REVISIONS		SHEET NUMBER 138

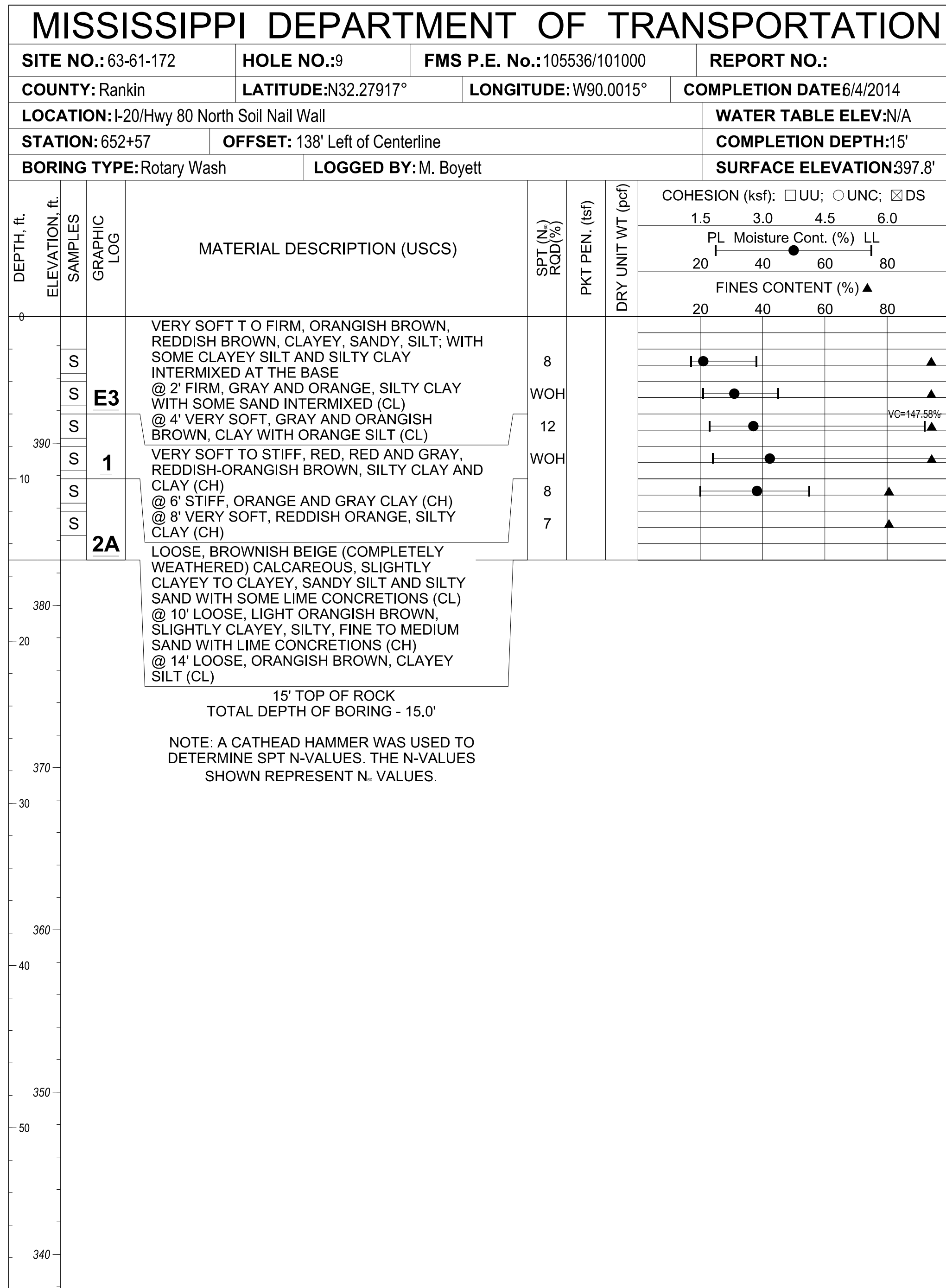


S: Split Spoon, T: Shelby Tube, C: Rock Core, P: Pitcher



S: Split Spoon, T: Shelby Tube, C: Rock Core, P: Pitcher

MISSISSIPPI DEPARTMENT OF TRANSPORTATION	
BORING LOGS (SHEET 4 OF 5)	
NORTH SOIL NAIL WALL	
I-20/HWY 80 INTERCHANGE	
SITE NO: 63-61-172	
PROJECT NO: 105536/301000	
COUNTY: RANKIN	
DESIGNED: C.M.C. DETAILED: C.M.C. DRAWN: CADD	WORKING NUMBER SNW-11
CHECKED: R.S.F. ISSUED: R.S.F. DATE: 06-19-14	SHEET NUMBER 140



S: Split Spoon, T: Shelby Tube, C: Rock Core, P: Pitcher

MISSISSIPPI DEPARTMENT OF TRANSPORTATION		
BORING LOGS (SHEET 5 OF 5)		
NORTH SOIL NAIL WALL		
I-20/HWY 80 INTERCHANGE		
SITE NO: 63-61-172		
105536/301000		
PROJECT NO: HISP-0020-01(191)		
COUNTY: RANKIN		
6-30-14 DATE	X FINES ADDED REVISIONS	CMC BY
DESIGNED: C.M.C.	DETAILED: C.M.C.	DRAWN: CADD
CHECKED: R.S.F.	ISSUED: R.S.F.	DATE: 06-19-14
WORKING NUMBER SNW-12		SHEET NUMBER 141