

**SECTION 905 -- PROPOSAL (CONTINUED)**

I (We) further propose to execute the attached contract agreement (Section 902) as soon as the work is awarded to me (us), and to begin and complete the work within the time limit(s) provided for in the Specifications and Advertisement. I (We) also propose to execute the attached contract bond (Section 903) in an amount not less than one hundred (100) percent of the total of my (our) part, but also to guarantee the excellence of both workmanship and materials until the work is finally accepted.

I (We) enclose a certified check, cashier's check or bid bond for **five percent (5%) of total bid** and hereby agree that in case of my (our) failure to execute the contract and furnish bond within Ten (10) days after notice of award, the amount of this check (bid bond) will be forfeited to the State of Mississippi as liquidated damages arising out of my (our) failure to execute the contract as proposed. It is understood that in case I am (we are) not awarded the work, the check will be returned as provided in the Specifications.

Bidder acknowledges receipt of and has added to and made a part of the proposal and contract documents the following addendum (addenda):

ADDENDUM NO.   1   DATED   11/17/2014   ADDENDUM NO.            DATED             
 ADDENDUM NO.   2   DATED   11/20/2014   ADDENDUM NO.            DATED           

Number	Description
1	Revised Table of Contents; Revised NTB No. 5234; Add NTB No's 6, 5233, 5272, & 5273; Revised BidItems; Revised or Added Plan Sheet Nos. 1, 2, 3, 4, 5, 7, 8, 9, 9.1, 10, 11, 12, 14, 18, 23, 24, 27, 28, 35, 38, 39, 42, 43, 52, 77, 78, 80, 87, 93, 101, 126, 126.1, 132, 133, 135, 140, 141, 142, 143, 144, 150, 151, 152, 157, 186, 187, 249, 251.1, 2003, 8001, 8002, & 8092; Amendment EBS Download Required.
2	Revised BidItems; Revised or Added Plan Sheet Nos. 3, 24, 28, 8001, & 8029; Amendment EBS Download Required.

TOTAL ADDENDA:   2    
 (Must agree with total addenda issued prior to opening of bids)

Respectfully Submitted,

DATE \_\_\_\_\_

\_\_\_\_\_ Contractor

BY \_\_\_\_\_ Signature

TITLE \_\_\_\_\_

ADDRESS \_\_\_\_\_

CITY, STATE, ZIP \_\_\_\_\_

PHONE \_\_\_\_\_

FAX \_\_\_\_\_

E-MAIL \_\_\_\_\_

(To be filled in if a corporation)

Our corporation is chartered under the Laws of the State of \_\_\_\_\_ and the names, titles and business addresses of the executives are as follows:

_____	President	Address
_____	Secretary	Address
_____	Treasurer	Address

The following is my (our) itemized proposal.

Construction necessary on SR 471 to build 5 lanes of traffic from US 80 to Grants Ferry Road, known as Federal Aid Project No. STP-0062-02(017) / 100579301 in Rankin County.

Line No.	Item Code	Adj Code	Quantity	Units	Description [Fixed Unit Price]
<b>Roadway Items</b>					
0010	201-A001		1	Lump Sum	Clearing and Grubbing
0020	202-B002		1,575	Square Yard	Removal of Asphalt Driveways, All Depths
0030	202-B005		31,362	Square Yard	Removal of Asphalt Pavement, All Depths
0040	202-B009		1	Each	Removal of Bridge
0050	202-B010		107	Square Yard	Removal of Bridge End Pavement
0060	202-B024		1,784	Square Yard	Removal of Concrete Median & Island Pavement, All Depths
0070	202-B025		773	Square Yard	Removal of Concrete Paved Ditch
0080	202-B036		480	Square Yard	Removal of Concrete Slope Paving
0090	202-B042		6	Each	Removal of Flared End Section, All Sizes
0100	202-B057		9	Each	Removal of Inlets, All Sizes
0110	202-B064		2,457	Linear Feet	Removal of Pipe, 8" And Above
0120	202-B076		32,750	Linear Feet	Removal of Traffic Stripe
0130	202-B079		4	Each	Removal of Headwall
0140	202-B087		1,176	Linear Feet	Removal of Guard Rail, Including Rails, Posts and Terminal Ends
0150	202-B093		3,424	Linear Feet	Removal of Curb & Gutter, All Types
0160	202-B095		3,930	Square Yard	Removal of Concrete Sidewalks & Driveways, All Depths
0170	202-B132		3	Each	Removal of Traffic Signal
0180	202-B248		1	Each	Removal of Manhole
0190	202-B308		990	Ton	Removal of Riprap
0200	203-A003	(E)	72,383	Cubic Yard	Unclassified Excavation, FM, AH
Changed 11/17/2014					
0210	203-D001	(E)	1,000	Cubic Yard	Muck Excavation, FM
0220	203-EX029	(E)	325,117	Cubic Yard	Borrow Excavation, AH, FME, Class B15
0230	203-EX040	(E)	13,920	Cubic Yard	Borrow Excavation, AH, LVM, Class B9-6
0240	203-F002	(E)	1,450	Cubic Yard	Channel Excavation, LVM
0250	203-G003	(E)	94,339	Cubic Yard	Excess Excavation, FM, AH
0260	203-G004	(E)	9,840	Cubic Yard	Excess Excavation, LVM, AH
0270	204-A003		1,480	Square Yard	Geogrid, Type II, Biaxial
0280	206-A001	(S)	6,922	Cubic Yard	Structure Excavation
0290	206-B001	(E)	234	Cubic Yard	Select Material for Undercuts, Contractor Furnished, FM
0300	209-A004		71,751	Square Yard	Geotextile Stabilization, Type V, Non-Woven
Changed 11/17/2014					

Line No.	Item Code	Adj Code	Quantity	Units	Description [Fixed Unit Price]
0310	209-A007		5,920	Square Yard	Geotextile Stabilization, Type VII, Non-Woven
0320	211-B001	(E)	2,000	Cubic Yard	Topsoil for Slope Treatment, Contractor Furnished
0330	213-C001		27	Ton	Superphosphate
0340	217-A001		4,490	Square Yard	Ditch Liner
0350	219-A001		109	Thousand Gallon	Watering [\$20.00]
0360	220-A001		27	Acre	Insect Pest Control [\$30.00]
0370	221-A001	(S)	1,866	Cubic Yard	Portland Cement Concrete Paved Ditch
0380	223-A001		1	Acre	Mowing [\$50.00]
0390	234-A001		46,952	Linear Feet	Temporary Silt Fence
0400	239-A001		500	Linear Feet	Temporary Slope Drains
0410	310-B003	(GT)	1,000	Ton	Size I Stabilizer Aggregate, Coarse
0420	406-A001		2,800	Square Yard	Cold Milling of Bituminous Pavement, All Depths
0430	501-E001		333	Linear Feet	Expansion Joints, Without Dowels
0440	502-A001	(C)	720	Square Yard	Reinforced Cement Concrete Bridge End Pavement
0450	503-C007		1,001	Linear Feet	Saw Cut, Full Depth
0460	602-A001	(S)	229,380	Pounds	Reinforcing Steel
0470	603-CA002	(S)	1,456	Linear Feet	18" Reinforced Concrete Pipe, Class III
0480	603-CA003	(S)	1,100	Linear Feet	24" Reinforced Concrete Pipe, Class III
0490	603-CA004	(S)	776	Linear Feet	30" Reinforced Concrete Pipe, Class III
0500	603-CA005	(S)	280	Linear Feet	36" Reinforced Concrete Pipe, Class III
0510	603-CA006	(S)	212	Linear Feet	42" Reinforced Concrete Pipe, Class III
0520	603-CA009	(S)	160	Linear Feet	60" Reinforced Concrete Pipe, Class III
0530	603-CA011	(S)	280	Linear Feet	72" Reinforced Concrete Pipe, Class III
0540	603-CA015	(S)	180	Linear Feet	24" Reinforced Concrete Pipe, Class IV
0550	603-CA107	(S)	300	Linear Feet	24" Reinforced Concrete Pipe, Class V, Jacked or Bored
0560	603-CA122	(S)	24	Linear Feet	42" Reinforced Concrete Pipe, Class V, Jacked or Bored
0570	603-CA126	(S)	132	Linear Feet	18" Reinforced Concrete Pipe, Class V, Jacked or Bored
0580	603-CB001	(S)	3	Each	18" Reinforced Concrete End Section
0590	603-CB002	(S)	21	Each	24" Reinforced Concrete End Section
0600	603-CB003	(S)	10	Each	30" Reinforced Concrete End Section
0610	603-CB004	(S)	4	Each	36" Reinforced Concrete End Section
0620	603-CB005	(S)	4	Each	42" Reinforced Concrete End Section
0630	603-CB008	(S)	2	Each	60" Reinforced Concrete End Section
0640	603-CB010	(S)	4	Each	72" Reinforced Concrete End Section
0650	603-CE002	(S)	212	Linear Feet	29" x 18" Concrete Arch Pipe, Class A III

Line No.	Item Code	Adj Code	Quantity	Units	Description [Fixed Unit Price]
0660	603-CE003	(S)	96	Linear Feet	36" x 23" Concrete Arch Pipe, Class A III
0670	603-CE007	(S)	228	Linear Feet	65" x 40" Concrete Arch Pipe, Class A III
0680	603-CF002	(S)	4	Each	29" x 18" Concrete Arch Pipe End Section
0690	603-CF003	(S)	4	Each	36" x 23" Concrete Arch Pipe End Section
0700	603-CF007	(S)	6	Each	65" x 40" Concrete Arch Pipe End Section
0710	603-SB055	(S)	1	Each	30" Branch Connections, Stub into Box Bridge
0720	604-A001		2,556	Pounds	Castings
0730	604-B001		1,221	Pounds	Gratings
0740	605-AA005	(S)	2,410	Square Yard	Geotextile for Subsurface Drainage, Type V, Non-Woven
0750	605-W001	(GY)	65	Cubic Yard	Filter Material for Combination Storm Drain and/or Underdrains, Type A, FM
0760	605-W002	(GY)	1,500	Cubic Yard	Filter Material for Combination Storm Drain and/or Underdrains, Type B, FM
0770	606-B001		550	Linear Feet	Guard Rail, Class A, Type 1
0780	606-D012		4	Each	Guard Rail, Bridge End Section, Type I
0790	606-E002		4	Each	Guard Rail, Terminal End Section, Flared
0800	607-B001		595	Linear Feet	60" Type I Chain Link Fence, Class I
0810	607-G038		2	Each	Gate, 12' x 60" Chain Link
0820	607-P1007		24	Each	Line Post, 7' x 1 1/2" Galvanized Steel
0830	607-P1025		3	Each	Line Post, 10' x 1 1/2" Galvanized Steel
0840	607-P1026		5	Each	Line Post, 9' x 1 1/2" Galvanized Steel
0850	607-P2019		3	Each	Brace Post, 10' x 2" Galvanized Steel
0860	607-P2022		2	Each	Brace Post, 12' x 2" Galvanized Steel
0870	607-P2023		13	Each	Brace Post, 8' x 2" Galvanized Steel
0880	607-P3006		2	Each	Gate Post, 12' x 2 1/2" Galvanized Steel
0890	607-Z001		9	Each	Concrete Anchors
0900	609-D001	(S)	203	Linear Feet	Combination Concrete Curb and Gutter Type 1
0910	609-D004	(S)	3,790	Linear Feet	Combination Concrete Curb and Gutter Type 3A Modified
0920	609-D007	(S)	6,466	Linear Feet	Combination Concrete Curb and Gutter Type 2 Modified
0930	614-B001	(S)	619	Square Yard	Concrete Driveway, With Reinforcement
0940	615-A019	(S)	80	Linear Feet	Concrete Bridge End Barrier, 43.5"
0950	616-A001	(S)	1,619	Square Yard	Concrete Median and/or Island Pavement, 4-inch
0960	616-A003	(S)	264	Square Yard	Concrete Median and/or Island Pavement, 10-inch
0970	619-A1004		32	Mile	Temporary Traffic Stripe, Continuous White, Paint
0980	619-A1007		7,506	Linear Feet	Temporary Traffic Stripe, Continuous White, Type 1 Tape
0990	619-A2004		34	Mile	Temporary Traffic Stripe, Continuous Yellow, Paint
1000	619-A2007		7,506	Linear Feet	Temporary Traffic Stripe, Continuous Yellow, Type 1 Tape

Line No.	Item Code	Adj Code	Quantity	Units	Description [Fixed Unit Price]
1010	619-A3007		15	Mile	Temporary Traffic Stripe, Skip White, Paint
1020	619-A4007		17	Mile	Temporary Traffic Stripe, Skip Yellow, Paint
1030	619-A5002		74,325	Linear Feet	Temporary Traffic Stripe, Detail, Paint
1040	619-A6003		11,556	Linear Feet	Temporary Traffic Stripe, Legend, Paint
1050	619-A6004		3,830	Square Feet	Temporary Traffic Stripe, Legend, Paint
1060	619-C6001		1,435	Each	Red-Clear Reflective High Performance Raised Marker
1070	619-C7001		6,429	Each	Two-Way Yellow Reflective High Performance Raised Marker
1080	619-D1001		1,097	Square Feet	Standard Roadside Construction Signs, Less than 10 Square Feet
1090	619-D2001		1,591	Square Feet	Standard Roadside Construction Signs, 10 Square Feet or More
Changed 11/17/2014					
1100	619-E1001		1	Each	Flashing Arrow Panel, Type C
1110	619-F1001		3,450	Linear Feet	Concrete Median Barrier, Precast
Changed 11/17/2014					
1120	619-F2001		1,890	Linear Feet	Remove and Reset Concrete Median Barrier, Precast
1130	619-G4001		1,122	Linear Feet	Barricades, Type III, Single Faced
1140	619-G4005		132	Linear Feet	Barricades, Type III, Double Faced
1150	619-G5001		334	Each	Free Standing Plastic Drums
1160	619-G7001		11	Each	Warning Lights, Type "B"
1170	619-H1001		1	Lump Sum	Traffic Signals
1180	619-J1002		3	Unit	Impact Attenuator, 50 MPH
Changed 11/17/2014					
1185	619-J1003		4	Unit	Impact Attenuator, 60 MPH
Added 11/17/2014					
1186	619-J2002		4	Unit	Impact Attenuator, 60 MPH, Replacement Package
Added 11/17/2014					
1190	619-J2004		3	Unit	Impact Attenuator, 50 MPH, Replacement Package
Changed 11/17/2014					
1200	619-K2002		2	Each	Installation and Removal of Guard Rail, Type I Bridge End Section
1210	619-K4001		2	Each	Installation and Removal of Guardrail, Terminal End Section
1220	620-A001		1	Lump Sum	Mobilization
1230	627-K001		916	Each	Red-Clear Reflective High Performance Raised Markers
1240	627-L001		2,971	Each	Two-Way Yellow Reflective High Performance Raised Markers
1250	630-A001		445	Square Feet	Standard Roadside Signs, Sheet Aluminum, 0.080" Thickness
1260	630-A002		280	Square Feet	Standard Roadside Signs, Sheet Aluminum, 0.125" Thickness
1270	630-C004		983	Linear Feet	Steel U-Section Posts, 3.0 to 3.5 lb/ft

Line No.	Item Code	Adj Code	Quantity	Units	Description [Fixed Unit Price]
1280	630-E004		255	Pounds	Structural Steel Angles & Bars, 7/16" x 2 1/2" Flat Bar
1290	630-F001		28	Each	Delineators, Guard Rail, White
1300	630-G002		8	Each	Type 3 Object Markers, OM-3R or OM-3L, Post Mounted
1310	630-K001		213	Linear Feet	Welded & Seamless Steel Pipe Posts, 3"
1320	630-K003		15	Linear Feet	Welded & Seamless Steel Pipe Posts, 4"
1330	640-A016		42	Each	Traffic Signal Heads, Type 1 LED
1340	640-A017		5	Each	Traffic Signal Heads, Type 2 LED
1350	640-A018		3	Each	Traffic Signal Heads, Type 3 LED
1360	640-A056		9	Each	Traffic Signal Heads, Type 2 FYA LED
1370	643-A001		1	Each	Closed Loop On-Street Master System
1380	644-B001		3,862	Linear Feet	Optical Detector Cable
1390	647-A002		6	Each	Pullbox, Type 3
1400	647-A005		19	Each	Pullbox, Type 2
1410	648-A001		2	Each	Radio Interconnect, Installed in New Controller Cabinet
1420	666-B004		1,785	Linear Feet	Electric Cable, Underground in Conduit, IMSA 20-1, AWG 10, 2 Conductor
1430	666-B015		211	Linear Feet	Electric Cable, Underground in Conduit, IMSA 20-1, AWG 14, 5 Conductor
1440	666-B022		353	Linear Feet	Electric Cable, Underground in Conduit, IMSA 20-1, AWG 8, 2 Conductor
1450	666-B054		4,114	Linear Feet	Electric Cable, Underground in Conduit, IMSA 20-1, AWG 14, 8 Conductor
1460	668-B025		1,910	Linear Feet	Traffic Signal Conduit, Underground Drilled or Jacked, Rolled Pipe, 3"
	Changed 11/17/2014				
1470	668-B024		176	Linear Feet	Traffic Signal Conduit, Underground Drilled or Jacked, Rolled Pipe, 2"
	Changed 11/17/2014				
1480	668-A033		569	Linear Feet	Traffic Signal Conduit, Underground, PVC Coated, 2"
1490	668-A036		211	Linear Feet	Traffic Signal Conduit, Underground, PVC Coated, 3"
1500	815-A006	(S)	6,280	Ton	Loose Riprap, Size 100
1510	815-A009	(S)	1,245	Ton	Loose Riprap, Size 300
1520	815-E001	(S)	2,102	Square Yard	Geotextile under Riprap
1530	907-216-A001		5,431	Square Yard	Solid Sodding
1540	907-225-A001		57	Acre	Grassing
1550	907-225-B001		162	Ton	Agricultural Limestone
1560	907-225-C001		108	Ton	Mulch, Vegetative Mulch
1570	907-226-A001		55	Acre	Temporary Grassing
1580	907-234-C002		995	Linear Feet	Super Silt Fence
1590	907-234-D001		3	Each	Inlet Siltation Guard
1600	907-237-A003		10,000	Linear Feet	Wattles, 20"

Line No.	Item Code	Adj Code	Quantity	Units	Description [Fixed Unit Price]
1610	907-245-A001		3,000	Linear Feet	Triangular Silt Dike
1620	907-246-B002		1,500	Each	Rockbags
1630	907-247-A001		1	Each	Temporary Stream Diversion
1640	907-249-A001		2,000	Ton	Riprap for Erosion Control
1650	907-249-B001		500	Cubic Yard	Remove and Reset Riprap
1660	907-304-B005	(GT )	29,314	Ton	Granular Material, Class 9, Group C
	Changed 11/17/2014				
1670	907-304-B007	(GT )	17,419	Ton	Granular Material, Class 5, Group E
1680	907-304-D003	(GT )	1,550	Ton	Granular Material, Size 57
1685	907-304-F004	(GT )	9,800	Ton	Size 825B Crushed Stone Base For Railroad Work Ramp
	Added 11/20/2014				
1700	907-307-A002	(M )	28,364	Square Yard	6" Soil-Lime-Water Mixing, Class A
	Changed 11/17/2014				
1710	907-307-D001		383	Ton	Lime
	Changed 11/17/2014				
1720	907-307-S001	(A3 )	7,091	Gallon	Bituminous Curing Seal
	Changed 11/17/2014				
1730	907-310-B001	(GT )	400	Ton	Size III Stabilizer Aggregate, Coarse
1740	907-407-A001	(A2 )	24,434	Gallon	Asphalt for Tack Coat
1750	907-413-E001		400	Linear Feet	Sawing and Sealing Transverse Joints in Asphalt Pavement
1760	907-601-B003	(S )	87	Cubic Yard	Class "B" Structural Concrete, Minor Structures
1770	907-603-ALT01	(S )	1,204	Linear Feet	18" Type A Alternate Pipe
1780	907-603-ALT02	(S )	1,208	Linear Feet	24" Type A Alternate Pipe
1790	907-603-ALT03	(S )	52	Linear Feet	30" Type A Alternate Pipe
1800	907-603-ALT12	(S )	224	Linear Feet	36" x 23" Type A Alternate Pipe
1810	907-603-ALT15	(S )	60	Linear Feet	29" x 18" Type A Alternate Pipe
1820	907-605-O001	(S )	1,000	Linear Feet	6" Perforated Sewer Pipe for Underdrains, SDR 23.5
1830	907-605-P001	(S )	50	Linear Feet	6" Non-perforated Sewer Pipe for Underdrains, SDR 23.5
1840	907-617-A001		195	Each	Right-of-Way Marker
1850	907-618-A001		1	Lump Sum	Maintenance of Traffic
1860	907-619-E3001		12	Each	Changeable Message Sign
1870	907-622-B001		1	Each	Engineer's Field Office Building, Type 2 LO
1880	907-626-A005		5	Mile	6" Thermoplastic Double Drop Traffic Stripe, Skip White
1890	907-626-B005		1,951	Linear Feet	6" Thermoplastic Double Drop Traffic Stripe, Continuous White
1900	907-626-C003		9	Mile	6" Thermoplastic Double Drop Edge Stripe, Continuous White

Line No.	Item Code	Adj Code	Quantity	Units	Description [Fixed Unit Price]
1910	907-626-D006		4	Mile	6" Thermoplastic Double Drop Traffic Stripe, Skip Yellow
1920	907-626-E006		9	Mile	6" Thermoplastic Double Drop Traffic Stripe, Continuous Yellow
1930	907-626-G006		22,721	Linear Feet	Thermoplastic Double Drop Detail Stripe, White
1940	907-626-G007		19,105	Linear Feet	Thermoplastic Double Drop Detail Stripe, Yellow
1950	907-626-H009		4,333	Linear Feet	Thermoplastic Double Drop Legend, White
1960	907-626-H010		2,629	Square Feet	Thermoplastic Double Drop Legend, White
1970	907-630-O007		1	Each	Remove and Reset Signs, Ground Mounted
1980	907-639-A002		4	Each	Traffic Signal Equipment Pole, Type II, 17' Shaft, 50' Arm
1990	907-639-A006		1	Each	Traffic Signal Equipment Pole, Type II, 17' Shaft, 30' Arm
2000	907-639-A007		1	Each	Traffic Signal Equipment Pole, Type II, 17' Shaft, 40' Arm
2010	907-639-A008		5	Each	Traffic Signal Equipment Pole, Type II, 17' Shaft, 55' Arm
2020	907-639-A010		1	Each	Traffic Signal Equipment Pole, Type IV, 30' Shaft, 35' Arm
2030	907-639-A015		1	Each	Traffic Signal Equipment Pole, Type IV, 30' Shaft, 50' Arm
2040	907-639-A016		1	Each	Traffic Signal Equipment Pole, Type IV, 30' Shaft, 55' Arm
2050	907-639-A021		3	Each	Traffic Signal Equipment Pole, Type IV, 30' Shaft, 40' Arm
2060	907-639-A028		3	Each	Traffic Signal Equipment Pole, Type IV, 30' Shaft, 30' Arm
2070	907-639-A029		3	Each	Traffic Signal Equipment Pole, Type IV, 30' Shaft, 45' Arm
2080	907-639-C002		45	Cubic Yard	Pole Foundations, 36" Diameter
2090	907-639-C004		31	Cubic Yard	Pole Foundations, 30" Diameter
2100	907-641-C001		36	Each	Signal Radar Detection System
2110	907-642-A002		6	Each	Solid State Traffic Actuated Controllers, Type 8A, State Furnished
2120	907-644-A001		23	Each	Optical Detector
2130	907-699-A002		1	Lump Sum	Roadway Construction Stakes
	Changed 11/20/2014				
2140	907-804-B001	(S)	1,236	Cubic Yard	Box Bridge Concrete, Class B
2150	907-815-F001	(S)	100	Ton	Sediment Control Stone
2160	907-899-A001		1	Lump Sum	Railway-Highway Provisions
2170	907-906001		2,080	Hours	Trainees [\$5.00]
	<b>ALTERNATE GROUP AA NUMBER 1</b>				
2180	907-308-A001		899	Ton	Portland Cement
	Changed 11/17/2014				
2190	907-308-B001	(M)	85,029	Square Yard	Soil-Cement-Water Mixing, Optional Mixers, Base
	Changed 11/17/2014				
2200	907-308-S001	(A3)	21,272	Gallon	Bituminous Curing Seal
	Changed 11/17/2014				
	<b>ALTERNATE GROUP AA NUMBER 2</b>				



Line No.	Item Code	Adj Code	Quantity	Units	Description [Fixed Unit Price]
2210	907-311-A003	(M )	85,029	Square Yard	Processing Lime and Fly Ash Treated Course, 6" Thick
Changed 11/17/2014					
2220	907-311-B001		627	Ton	Lime
Changed 11/17/2014					
2230	907-311-C002		2,510	Ton	Fly Ash, Class C or F
Changed 11/17/2014					
2240	907-311-S001	(A3 )	21,272	Gallon	Bituminous Curing Seal
Changed 11/17/2014					
<b>ALTERNATE GROUP BB NUMBER 1</b>					
2250	907-403-A001	(BA1 )	8,565	Ton	Hot Mix Asphalt, HT, 12.5-mm mixture
<b>ALTERNATE GROUP BB NUMBER 2</b>					
2260	907-403-M010	(BA1 )	8,565	Ton	Warm Mix Asphalt, HT, 12.5-mm mixture
<b>ALTERNATE GROUP CC NUMBER 1</b>					
2270	907-403-A011	(BA1 )	9,205	Ton	Hot Mix Asphalt, ST, 12.5-mm mixture
<b>ALTERNATE GROUP CC NUMBER 2</b>					
2280	907-403-M003	(BA1 )	9,205	Ton	Warm Mix Asphalt, ST, 12.5-mm mixture
<b>ALTERNATE GROUP DD NUMBER 1</b>					
2290	907-403-A012	(BA1 )	23,814	Ton	Hot Mix Asphalt, ST, 19-mm mixture
<b>ALTERNATE GROUP DD NUMBER 2</b>					
2300	907-403-M004	(BA1 )	23,814	Ton	Warm Mix Asphalt, ST, 19-mm mixture
<b>ALTERNATE GROUP EE NUMBER 1</b>					
2310	907-403-A015	(BA1 )	6,288	Ton	Hot Mix Asphalt, ST, 9.5-mm mixture
<b>ALTERNATE GROUP EE NUMBER 2</b>					
2320	907-403-M001	(BA1 )	6,288	Ton	Warm Mix Asphalt, ST, 9.5-mm mixture
<b>ALTERNATE GROUP FF NUMBER 1</b>					
2330	907-403-C005	(BA1 )	1,736	Ton	Hot Mix Asphalt, ST, 19-mm mixture, Trench Widening
<b>ALTERNATE GROUP FF NUMBER 2</b>					
2340	907-403-O001	(BA1 )	1,736	Ton	Warm Mix Asphalt, ST, 19-mm mixture, Trench Widening
<b>ALTERNATE GROUP GG NUMBER 1</b>					
2350	907-403-B007	(BA1 )	2,721	Ton	Hot Mix Asphalt, ST, 12.5-mm mixture, Leveling
<b>ALTERNATE GROUP GG NUMBER 2</b>					
2360	907-403-N002	(BA1 )	2,721	Ton	Warm Mix Asphalt, ST, 12.5-mm mixture, Leveling
<b>ALTERNATE GROUP HH NUMBER 1</b>					
2370	907-403-D001	(BA1 )	10,862	Ton	Hot Mix Asphalt, HT, 12.5-mm mixture, Polymer Modified
<b>ALTERNATE GROUP HH NUMBER 2</b>					

Line No.	Item Code	Adj Code	Quantity	Units	Description [Fixed Unit Price]
2380	907-403-P002	(BA1 )	10,862	Ton	Warm Mix Asphalt, HT, 12.5-mm mixture, Polymer Modified <b>ALTERNATE GROUP II NUMBER 1</b>
2390	907-403-D004	(BA1 )	8,101	Ton	Hot Mix Asphalt, HT, 9.5-mm mixture, Polymer Modified <b>ALTERNATE GROUP II NUMBER 2</b>
2400	907-403-P001	(BA1 )	8,101	Ton	Warm Mix Asphalt, HT, 9.5-mm mixture, Polymer Modified <b>ALTERNATE GROUP JJ NUMBER 1</b>
2401	907-304-F004 Changed 11/17/2014	(GT )	30,944	Ton	Size 825B Crushed Stone Base <b>ALTERNATE GROUP JJ NUMBER 2</b>
2402	907-304-F003 Added 11/17/2014	(GT )	30,944	Ton	3/4" and Down Crushed Stone Base <b>ALTERNATE GROUP JJ NUMBER 3</b>
2403	907-304-F002 Added 11/17/2014	(GT )	30,944	Ton	Size 610 Crushed Stone Base
<b>Bridge Items</b>					
2410	501-K001		15,764	Square Yard	Transverse Grooving
2420	801-A001	(S )	913	Cubic Yard	Foundation Excavation for Bridges
2430	803-B002	(S )	3	Each	Conventional Static Pile Load Test [\$5,000.00]
2440	803-D003	(S )	9,571	Linear Feet	HP 14 x 73 Steel Piling
2450	803-D002 Changed 11/17/2014	(S )	2,400	Linear Feet	HP 12 x 53 Steel Piling
2460	803-I001	(S )	7	Each	PDA Test Pile
2470	803-J001	(S )	4	Each	Pile Restrike
2480	803-N001	(S )	600	Linear Feet	Exploration
2490	803-O009	(S )	1,500	Linear Feet	Temporary Casing, 54" Diameter
2500	803-O020	(S )	295	Linear Feet	Permanent Casing, 54" Diameter
2510	805-A001	(S )	2,038,201	Pounds	Reinforcement
2520	810-A003	(S )	1,275,000	Pounds	Structural Steel, A 709, Grade 50
2530	813-A003	(S )	3,743	Linear Feet	Concrete Railing, 42"
2540	815-D001	(S )	455	Cubic Yard	Concrete Slope Paving
2550	907-607-PP019		360	Linear Feet	Safety Fence, Per Plans
2560	907-803-K003	(S )	3,638	Linear Feet	Drilled Shaft, 54" Diameter
2570	907-803-L005	(S )	1	Each	Test Shaft, 54" Diameter
2580	907-803-M003	(S )	80	Linear Feet	Trial Shaft, 54" Diameter
2590	907-804-A001	(S )	8,419	Cubic Yard	Bridge Concrete, Class AA

<b>Line No.</b>	<b>Item Code</b>	<b>Adj Code</b>	<b>Quantity</b>	<b>Units</b>	<b>Description [Fixed Unit Price]</b>
2600	907-804-C174	(S)	794	Linear Feet	80' Prestressed Concrete Beam, Type IV
2610	907-804-C201	(S)	2,023	Linear Feet	102' Prestressed Concrete Beam, Type IV
2620	907-804-C207	(S)	914	Linear Feet	92' Prestressed Concrete Beam, Type IV
2630	907-804-C266	(S)	4,446	Linear Feet	99' Prestressed Concrete Beam, Type BT-72
2640	907-804-C267	(S)	5,717	Linear Feet	106' Prestressed Concrete Beam, Type BT-72
2650	907-811-D001	(S)	27	Each	Disc Bearing Device

# ADDENDUM

## DESCRIPTION OF SHEET

STATE	PROJECT NO.
MISS.	STP-0062-02(017)

### INTERSECTION DETAIL SHEETS ( 7 )

SR 471 - STA. 0+00 TO STA. 8+00  
 SR 471 AT OLD HWY 80 AND COLLEGE ST.  
 SR 471 AT LAKELAND DRIVE  
 SR 471 AT TERRAPIN CREEK ROAD  
 SR 471 AT LUCKNEY ROAD  
 SR 471 AT TOLLESON DRIVE AND EAST DEER RIDGE RD  
 SR 471 AT GRANTS FERRY ROAD

WKG. NO.	SH. NO.
ID-1	86
ID-2	87
ID-3	88
ID-4	89
ID-5	90
ID-6	91
ID-7	92

### FORM GRADE SHEETS ( 7 )

FORM GRADES - OLD HWY 80 AND COLLEGE ST  
 FORM GRADES - LAKELAND DRIVE  
 FORM GRADES - BRIDGE STA. 60+75 TO STA. 66+00  
 FORM GRADES - EX SR 471 CONNECTOR  
 FORM GRADES - LUCKNEY ROAD  
 FORM GRADES - EAST DEER RIDGE DRIVE  
 FORM GRADES - GRANTS FERRY ROAD

FG-1	93
FG-2	94
FG-3	95
FG-4	96
FG-5	97
FG-6	98
FG-7	99

### PERMANENT PAVEMENT MARKING SHEETS ( 26 )

PAVEMENT MARKING - SR 471 STA. 0+00 TO STA. 7+50  
 PAVEMENT MARKING - SR 471 AT OLD HWY 80 STA. 7+50 TO STA. 16+50  
 PAVEMENT MARKING - SR 471 STA. 16+50 TO STA. 25+50  
 PAVEMENT MARKING - SR 471 STA. 25+50 TO STA. 32+00  
 PAVEMENT MARKING - NEW SCHOOL DRIVE  
 PAVEMENT MARKING - SR 471 AT LAKELAND DR STA. 32+00 TO STA. 37+50  
 PAVEMENT MARKING - LAKELAND DRIVE STA. 15+50 TO 22+00  
 PAVEMENT MARKING - SR 471 STA. 37+50 TO STA. 46+00  
 PAVEMENT MARKING - TANGLEWOOD DRIVE STA. 12+00 TO 22+00  
 PAVEMENT MARKING - SR 471 STA. 46+00 TO STA. 55+00  
 PAVEMENT MARKING - SR 471 STA. 55+00 TO STA. 64+00  
 PAVEMENT MARKING - SR 471 STA. 64+00 TO STA. 70+50  
 PAVEMENT MARKING - SR 471 STA. 70+50 TO STA. 79+00  
 PAVEMENT MARKING - EXISTING SR471 STA. 8+00 TO 17+00  
 PAVEMENT MARKING - TERRAPIN CREEK RD. STA. 21+00 TO 26+65.73  
 PAVEMENT MARKING - LUCKNEY ROAD STA. 10+00 TO STA. 20+00  
 PAVEMENT MARKING - SR471 STA. 83+00 TO STA. 104+00  
 PAVEMENT MARKING - SR471 STA. 104+00 TO STA. 112+00  
 PAVEMENT MARKING - SR471 STA. 112+00 TO STA. 118+00  
 PAVEMENT MARKING - SR471 STA. 118+00 TO STA. 127+00  
 PAVEMENT MARKING - TOLLESON DRIVE STA. 3+00 TO 9+00  
 PAVEMENT MARKING - SR471 STA. 127+00 TO STA. 135+00  
 PAVEMENT MARKING - SR471 STA. 135+00 TO STA. 144+00  
 PAVEMENT MARKING - SR471 AT GRANTS FERRY ROAD STA. 144+00 TO STA. 153+00  
 PAVEMENT MARKING - SR471 STA. 153+00 TO STA. 162+00  
 PAVEMENT MARKING - SR471 STA. 162+00 TO E.O.P. STA. 172+00

PMD-1	100
PMD-2	101
PMD-3	102
PMD-4	103
PMD-5	104
PMD-6	105
PMD-7	106
PMD-8	107
PMD-9	108
PMD-10	109
PMD-11	110
PMD-12	111
PMD-13	112
PMD-14	113
PMD-15	114
PMD-16	115
PMD-17	116
PMD-18	117
PMD-19	118
PMD-20	119
PMD-21	120
PMD-22	121
PMD-23	122
PMD-24	123
PMD-25	124
PMD-26	125

### CONSTRUCTION SIGNING PLANS ( 7 ) 1

CONSTRUCTION SIGNING  
 CONSTRUCTION SIGNING  
 CONSTRUCTION SIGNING  
 CONSTRUCTION SIGNING  
 CONSTRUCTION SIGNING  
 CONSTRUCTION SIGNING

CS-1	126
CS-1A	126.1 1
CS-2	127
CS-3	128
CS-4	129
CS-5	130
CS-6	131

### TRAFFIC CONTROL PLANS ( 31 )

SR471 - PHASE 1  
 SR471 - PHASE 1  
 SR471 - PHASE 1 - OLD US 80 / COLLEGE ST DETOUR  
 SR471 - PHASE 1  
 SR471 - PHASE 1

TC1-1	132
TC1-1A	133
TC1-1B	134
TC1-2	135
TC1-3	136

## DESCRIPTION OF SHEET

SR471 - PHASE 1  
 SR471 - PHASE 1  
 SR471 - PHASE 1  
 SR471 - PHASE 1 - TYPICAL SECTIONS  
 SR471 - PHASE 1 - TYPICAL SECTIONS  
 SR471 - PHASE 2  
 SR471 - PHASE 2  
 SR471 - PHASE 2  
 SR471 - PHASE 2 - LAKEKLAND DETOUR  
 SR471 - PHASE 2  
 SR471 - PHASE 2  
 SR471 - PHASE 2  
 SR471 - PHASE 2  
 SR471 - PHASE 2A  
 SR471 - PHASE 3  
 SR471 - PHASE 3  
 SR471 - PHASE 3  
 SR471 - PHASE 3  
 SR471 - PHASE 3  
 SR471 - PHASE 3  
 SR471 - PHASE 3  
 SR471 - PHASE 3  
 SR471 - PHASE 4  
 SR471 - PHASE 4  
 SR471 - PHASE 4  
 SR471 - PHASE 4  
 SR471 - PHASE 4  
 SR471 - PHASE 4

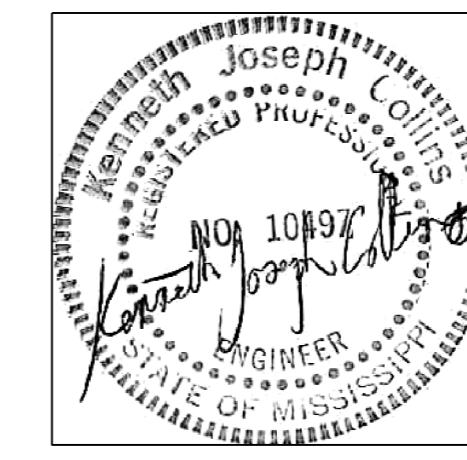
### MDOT PRELIMINARY EROSION CONTROL PLANS ( 23 )

DETAILS OF TYPICAL DITCH TREATMENT  
 DITCH TREATMENT INSTALLATION DETAIL FOR SOIL REINFORCING MAT  
 TYPICAL TEMPORARY EROSION CONTROL MEASURES (SLOPE DRAIN AND TYPE A SILT BASINS)  
 TYPICAL TEMPORARY EROSION SEDIMENT CONTROL APPLICATIONS  
 DETAILS OF SEDIMENT BARRIER APPLICATIONS  
 DETAILS OF SILT FENCE INSTALLATION  
 DITCH CHECK STRUCTURES, TYPICAL APPLICATIONS AND DETAILS  
 TEMPORARY EROSION, SEDIMENT AND WATER POLLUTION CONTROL MEASURES, SILT FENCE AND HAY BALE DITCH CHECKS  
 DETAILS OF EROSION CONTROL WATTLE DITCH CHECK  
 DETAILS OF EROSION CONTROL SILT DIKE DITCH CHECK  
 ROCK DITCH CHECK  
 ROCK DITCH CHECK WITH SUMP EXCAVATION  
 INLET PROTECTION TYPICAL APPLICATION AND DETAILS  
 INLET PROTECTION DETAILS FOR COARSE AGGREGATE ON GRADES & SAGS  
 INLET PROTECTION DETAILS OF WATTLES  
 INLET PROTECTION DETAILS OF MANUFACTURED INLET PROTECTION DEVICE  
 INLET PROTECTION DETAILS OF SAND BAG  
 STABILIZED CONSTRUCTION ENTRANCE  
 TEMPORARY CULVERT STREAM CROSSING  
 TEMPORARY STREAM DIVERSION  
 TEMPORARY STREAM DIVERSION (BOX EXTENSIONS)  
 FLOATING TURBIDITY CURTAIN  
 DETAILS OF EROSION CONTROL SANDBAG DITCH CHECK

WKG. NO.	SH. NO.
TC1-4	137
TC1-5	138
TC1-6	139
TC1-6A	140
TC1-6B	141
TC2-1	142
TC2-1A	143
TC2-2	144
TC2-2A	145
TC2-3	146
TC2-4	147
TC2-5	148
TC2-6	149
TC2A-1	150
TC3-1	151
TC3-2	152
TC3-3	153
TC3-4	154
TC3-5	155
TC3-6	156
TC4-1	157
TC4-2	158
TC4-3	159
TC4-4	160
TC4-5	161
TC4-6	162

DT-1	163
DT-1A	164
TEC-2	165
ECD-1	166
ECD-2	167
ECD-3	168
ECD-4	169
ECD-5	170
ECD-6	171
ECD-7	172
ECD-8	173
ECD-9	174
ECD-10	175
ECD-11	176
ECD-12	177
ECD-13	178
ECD-14	179
ECD-15	180
ECD-16	181
ECD-17	182
ECD-18	183
ECD-19	184
ECD-20	185

PS & E PLANS-DATE: 09-11-14		
FMS CON.: 100579 / 301000		
REVISIONS		
DATE	SHEET NO.	BY
11-12-14	187, 235, 236, 237,	KJC
	249, 251.1, 2003	
11-17-14	24, 28	KJC



Date: 06/06/2014

ADDED PS&E STAMP	DATE	BY	REVISION	<b>MISSISSIPPI DEPARTMENT OF TRANSPORTATION</b> <b>DETAIL INDEX</b>  <b>SR 471 FROM U.S. HWY 80</b> <b>TO GRANT'S FERRY ROAD</b>
11-12-14		KJC		
PROJ NO: STP-0062-02(017) COUNTY: RANKIN				WORKING NUMBER <b>DI-2</b>
FILENAME: DI-1.dgn DESIGN TEAM: BAKER CHECKED: KJC DATE: 2014				SHEET NUMBER <b>3</b>

11/17/2014 11:15 AM I:\INDEX.DGN

**ADDENDUM**

STATE PROJECT NO.  
MISS. STP-0062-02(009)

**SUMMARY OF QUANTITIES (SHEET 2)**

PAY ITEM NO.	PAY ITEM	UNIT	PRELIMINARY	FINAL
907-304-B005	GRANULAR MATERIAL, CLASS 9, GROUP C	TON	29,314 <sup>1</sup>	
907-304-B007	GRANULAR MATERIAL, CLASS 5, GROUP E	TON	17,419	
907-304-D003	GRANULAR MATERIAL, SIZE 57	TON	1,550	
907-304-F002	SIZE 610 CRUSHED STONE BASE	TON	30,944 <sup>1</sup>	
OR				
907-304-F003	3/4" AND DOWN CRUSHED STONE BASE	TON	30,944 <sup>1</sup>	
OR				
907-304-F004	SIZE 825B CRUSHED STONE BASE	TON	30,944 <sup>1</sup> <sup>2</sup>	
907-304-F004	SIZE 825B CRUSHED STONE BASE FOR RAILROAD WORK RAMP	TON	9,800 <sup>2</sup>	
907-307-A002	6" SOIL-LIME-WATER MIXING, CLASS A	SY	28,364 <sup>1</sup>	
907-307-D001	LIME	TON	383 <sup>1</sup>	
907-307-S001	BITUMINOUS CURING SEAL	GAL	7,091 <sup>1</sup>	
*** ALTERNATE PAY ITEMS ***				
907-308-A001	PORTLAND CEMENT	TON	899 <sup>1</sup>	
907-308-B001	SOIL-CEMENT-WATER MIXING, OPTIONAL MIXERS, BASE	SY	85,029 <sup>1</sup>	
907-308-S001	BITUMINOUS CURING SEAL	GAL	21,272 <sup>1</sup>	
OR				
907-311-A003	PROCESSING LIME AND FLY ASH TREATED COURSE, 6" THICK	SY	85,029 <sup>1</sup>	
907-311-B001	LIME	TON	627 <sup>1</sup>	
907-311-C002	FLY ASH, CLASS C OR F	TON	2,510 <sup>1</sup>	
907-311-S001	BITUMINOUS CURING SEAL	GAL	21,272 <sup>1</sup>	
907-310-B001	SIZE III STABILIZER AGGREGATE, COARSE	TON	400	
310-B003	SIZE I STABILIZER AGGREGATE, COARSE	TON	1,000	
907-403-A001	HOT MIX ASPHALT, HT, 12.5-MM MIXTURE	TON	8,565	
OR				
907-403-M010	WARM MIX ASPHALT, HT, 12.5-MM MIXTURE	TON	8,565	
907-403-A011	HOT MIX ASPHALT, ST, 12.5-MM MIXTURE	TON	9,205	
OR				
907-403-M003	WARM MIX ASPHALT, ST, 12.5-MM MIXTURE	TON	9,205	
907-403-A012	HOT MIX ASPHALT, ST, 19-MM MIXTURE	TON	23,814	
OR				
907-403-M004	WARM MIX ASPHALT, ST, 19-MM MIXTURE	TON	23,814	
907-403-A015	HOT MIX ASPHALT, ST, 9.5-MM MIXTURE	TON	6,288	
OR				
907-403-M001	WARM MIX ASPHALT, ST, 9.5-MM MIXTURE	TON	6,288	
907-403-C005	HOT MIX ASPHALT, ST, 19-MM MIXTURE, TRENCH WIDENING	TON	1,736	
OR				
907-403-O001	WARM MIX ASPHALT, ST, 19-MM MIXTURE, TRENCH WIDENING	TON	1,736	
907-403-B007	HOT MIX ASPHALT, ST, 12.5-MM MIXTURE, LEVELING	TON	2,721	
OR				
907-403-N002	WARM MIX ASPHALT, ST, 12.5-MM MIXTURE, LEVELING	TON	2,721	
907-403-D001	HOT MIX ASPHALT, HT, 12.5-MM MIXTURE, POLYMER MODIFIED	TON	10,862	
OR				
907-403-P002	WARM MIX ASPHALT, HT, 12.5-MM MIXTURE, POLYMER MODIFIED	TON	10,862	
907-403-D004	HOT MIX ASPHALT, HT, 9.5-MM MIXTURE, POLYMER MODIFIED	TON	8,101	
OR				
907-403-P001	WARM MIX ASPHALT, HT, 9.5-MM MIXTURE, POLYMER MODIFIED	TON	8,101	

- ① INCLUDES A 20% INCREASE FROM CALCULATED QUANTITY.
- ② QUANTITY BASED ON 50% OF SUB-BASE BEING TREATED.
- ③ INCLUDES 28,364 S.Y. BASED ON 50% OF SUBGRADE BEING TREATED & 56,665 S.Y. FOR TREATMENT OF GRANULAR MATERIAL.
- ④ QUANTITIES FOR LIME AND FLY ASH ARE BASED ON 3% AND 12% BY WEIGHT, RESPECTIVELY. ACTUAL APPLICATION RATE TO BE DETERMINED FROM TEST MADE PRIOR TO BEGINNING TREATMENT.
- ⑤ INCLUDES 191 TONS BASED ON 50% OF SUBGRADE BEING TREATED & 436 TONS FOR TREATMENT OF GRANULAR MATERIAL.
- ⑥ INCLUDES 766 TONS BASED ON 50% OF SUBGRADE BEING TREATED & 1,744 TONS FOR TREATMENT OF GRANULAR MATERIAL.
- ⑦ QUANTITY ESTIMATED FOR CONSTRUCTION ENTRANCES. ACTUAL QUANTITY AND PLACEMENT TO BE USED AS DIRECTED BY THE ENGINEER.
- ⑧ TO BE USED FOR RAILROAD WORK RAMP. NO ALTERNATE MATERIAL PERMITTED.
- ⑨ QUANTITY ESTIMATED FOR MAINTENANCE OF DRIVEWAYS DURING CONSTRUCTION.
- ⑩ INCLUDES 240 TONS BASED ON 50% OF SUBGRADE BEING TREATED & 659 TONS FOR TREATMENT OF GRANULAR MATERIAL.
- ⑪ NO ALTERNATE MATERIAL PERMITTED.

11/17/2014 11:16 AM SDS-SH-DEN

REVISION	BY	DATE	DESCRIPTION
1	KJC	11-17-14	REVISED CRUSHED STONE QUANTITIES
2	KJC	11-12-14	ADDED CRUSHED STONE ALTERNATES

MISSISSIPPI DEPARTMENT OF TRANSPORTATION  
**SUMMARY OF QUANTITIES**  
**SR471 FROM US HWY 80**  
**TO GRANTS FERRY RD.**

PROJ NO: STP-0062-02(009)  
 COUNTY: RANKIN

FILENAME: SQ-2.DGN  
 DESIGN TEAM: BAKER CHECKED: KJC DATE: 2014

MISSISSIPPI DEPARTMENT OF TRANSPORTATION  
 WORKING NUMBER: SQ-2  
 SHEET NUMBER: 24



**ADDENDUM**

**DESCRIPTION OF SHEET**

**WORKING NO. SHEET NO.**

DETAILED INDEX (BRIDGES A & B)  
SUMMARY OF QUANTITIES (BRIDGES A & B)  
ESTIMATED QUANTITIES (BRIDGES A & B)

DI-BR-1 8001  
SO-BR-1 8002  
EO-BR-1 8003

**BRIDGE A - SR 471 ACROSS I-20 AT STA. 675+44.65  
SR 471 BRIDGE AT STA. 17+10.05**

ESTIMATED QUANTITIES & GENERAL NOTES  
ELEVATION  
FOUNDATION PLAN  
PHASE CONSTRUCTION SCHEMATIC  
END BENT 1 DETAILS  
END BENT 1 DETAILS  
END BENT 5 DETAILS  
END BENT 5 DETAILS  
END BENT DETAILS  
INTERIOR BENTS 2, 3 & 4  
INTERIOR BENT DETAILS  
PLAN OF SPAN NO. 1  
PLAN OF SPAN NO. 1, REINFORCING STEEL  
PLAN OF SPAN NO. 2  
PLAN OF SPAN NO. 2, REINFORCING STEEL  
PLAN OF SPAN NO. 3  
PLAN OF SPAN NO. 3, REINFORCING STEEL  
PLAN OF SPAN NO. 4  
PLAN OF SPAN NO. 4 REINFORCING STEEL  
SPAN DETAILS (NEAR BRIDGE END)  
SPAN DETAILS (NEAR INTERIOR DIAPHRAGM)  
SPAN DETAILS (AT 1'-0" INTERIOR DIAPHRAGM)  
SPAN DETAILS  
MISCELLANEOUS SPAN DETAILS  
3'-6" RAILING DETAILS  
92 FT. BEAM DETAILS (END SPAN)  
102 FT. BEAM DETAILS (INT. SPAN)  
80 FT. BEAM DETAILS (END SPAN)  
BEAM LAYOUT AND TABLE OF BEAM DIMENSIONS  
BEARING PAD LAYOUT AND DETAILS  
GENERALIZED SOIL PROFILE

A1 8004  
A2 8005  
A3 8006  
A4 8007  
A5 8008  
A6 8009  
A7 8010  
A8 8011  
A9 8012  
A10 8013  
A11 8014  
A12 8015  
A13 8016  
A14 8017  
A15 8018  
A16 8019  
A17 8020  
A18 8021  
A19 8022  
A20 8023  
A21 8024  
A22 8025  
A23 8026  
A24 8027  
A25 8028  
A26 8029  
A27 8030  
A28 8031  
A29 8032  
A30 8033  
A31 8034

**SUPPLEMENTAL ORIGINAL PLANS, FOR INFORMATION PURPOSES ONLY  
PROJECT: I-16-20-1(22)44**

EXISTING PLAN AND PROFILE  
END BENTS NO. 1 & 5  
SPAN DETAILS  
SPAN DETAILS  
BOX GIRDER SPAN DETAILS  
INT. BENTS NO. 2, 3 & 4

J1 OF 6 8035  
J2 OF 6 8036  
J3 OF 6 8037  
J4 OF 6 8038  
J5 OF 6 8039  
J6 OF 6 8040

**BRIDGE B - MS. HWY. 471 OVER MSLLC COMPANY & VALUE ROAD  
BRIDGE AT STA. 46+48.31**

GENERAL NOTES & ESTIMATED QUANTITIES (BRIDGE B)  
OVERPASS AT STA. 46+48.31 OVER MSLLC COMPANY & VALUE ROAD ELEVATION  
OVERPASS AT STA. 46+48.31 OVER MSLLC COMPANY & VALUE ROAD ELEVATION  
OVERPASS AT STA. 46+48.31 OVER MSLLC COMPANY & VALUE ROAD ELEVATION  
PARTIAL FOUNDATION PLAN  
PARTIAL FOUNDATION PLAN  
PARTIAL FOUNDATION PLAN  
END BENT NO. 1 DETAILS ~ 1 OF 2  
END BENT NO. 1 DETAILS ~ 2 OF 2  
END BENT NO. 14 DETAILS ~ 1 OF 2  
END BENT NO. 14 DETAILS ~ 2 OF 2  
END BENT DETAILS  
INT. BENT NO. 2, 3 & 4 DETAILS  
INT. BENT DETAILS FOR BENT NOS. 2, 3, 4 & 8 THRU 13  
INT. BENT NO. 5 DETAILS  
INT. BENT NO. 6 DETAILS  
INT. BENT NO. 7 DETAILS  
INT. BENT DETAILS FOR BENT NOS. 5, 6 & 7  
INT. BENT NO. 8 DETAILS  
INT. BENT NO. 9 THRU 12 DETAILS  
INT. BENT NO. 13 DETAILS  
INT. BENT DETAILS

B1 8041  
B2 8042  
B3 8043  
B4 8044  
B5 8045  
B6 8046  
B7 8047  
B8 8048  
B9 8049  
B10 8050  
B11 8051  
B12 8052  
B13 8053  
B14 8054  
B15 8055  
B16 8056  
B17 8057  
B18 8058  
B19 8059  
B20 8060  
B21 8061  
B22 8062

**DESCRIPTION OF SHEET**

**WORKING NO. SHEET NO.**

**BRIDGE B - MS. HWY. 471 OVER MSLLC COMPANY & VALUE ROAD  
BRIDGE AT STA. 46+48.31**

99 FT. SPANS NO. 1, 2 & 3 DETAILS  
99 FT. SPAN NO. 4 DETAILS  
99 FT. SPAN NO. 7 DETAILS  
106 FT. SPAN NO. 8 DETAILS  
106 FT. SPANS NO. 9 THRU 12 DETAILS  
106 FT. SPAN NO. 13 DETAILS  
SPAN DETAILS - TYPICAL SECTION  
SPAN DETAILS - SECTIONS  
MISCELLANEOUS SPAN DETAILS  
PREFABRICATED DRAIN DETAILS  
42" RAILING DETAILS  
PRESTRESSED BEARING DETAILS  
BEAM DETAILS SPANS 1, 2 & 3  
BEAM DETAILS SPANS 4 & 7  
BEAM DETAILS SPANS 8 & 13  
BEAM DETAILS SPANS 9, 10, 11 & 12  
MISCELLANEOUS BEAM DETAILS  
SPAN DETAILS - TYPICAL SECTION ~ 1 OF 2  
SPAN DETAILS - TYPICAL SECTION ~ 2 OF 2  
180 FT. SPAN NO. 5 DETAILS  
180 FT. SPAN NO. 6 DETAILS  
FRAMING PLAN SPAN NO. 5  
FRAMING PLAN SPAN NO. 6  
TYPICAL STEEL GIRDER ELEVATION - SPANS 5 & 6  
WELDED PLATE GIRDER CAMBER AND SLAB DEFLECTION  
DISC BEARING DETAILS  
SPANS NO. 5 & 6 DETAILS (DIAPHRAGM DETAILS)  
MISCELLANEOUS STRUCTURAL STEEL DETAILS  
FIELD SPLICE DETAILS  
SCHEMATIC ERECTION SEQUENCE DIAGRAM  
FORM GRADES - SUPER ELEVATION TRANSITION SKETCH  
FORM GRADES SPAN 3  
FORM GRADES SPAN 4  
FORM GRADES SPAN 5  
FORM GRADES SPAN 7  
FORM GRADES SPAN 8  
FORM GRADES SPAN 9  
FORM GRADES SPAN 11  
FORM GRADES SPAN 12  
FORM GRADES SPAN 13  
FENCE DETAILS  
CONSTRUCTION RAMP DETAILS  
GENERALIZED SOIL PROFILE  
GENERALIZED SOIL PROFILE  
GENERALIZED SOIL PROFILE  
GENERALIZED SOIL PROFILE  
TEST SHAFT DETAILS  
TEMPORARY STEEL BRACING  
ADDITIONAL RAILROAD NOTES

B23 8063  
B24 8064  
B25 8065  
B26 8066  
B27 8067  
B28 8068  
B29 8069  
B30 8070  
B31 8071  
B32 8072  
B33 8073  
B34 8074  
B35 8075  
B36 8076  
B37 8077  
B38 8078  
B39 8079  
B40 8080  
B41 8081  
B42 8082  
B43 8083  
B44 8084  
B45 8085  
B46 8086  
B47 8087  
B48 8088  
B49 8089  
B50 8090  
B51 8091  
B52 8092  
B53 8093  
B54 8094  
B55 8095  
B56 8096  
B57 8097  
B58 8098  
B59 8099  
B60 8100  
B61 8101  
B62 8102  
B63 8103  
B64 8104  
B65 8105  
B66 8106  
B67 8107  
B68 8108  
B69 8109  
B70 8110  
B71 8111

**DESCRIPTION OF SHEET**

**WORKING NO. SHEET NO.**

**EROSION CONTROL - SR 471 BRIDGE A**

EROSION CONTROL - ELEVATION  
EROSION CONTROL - FOUNDATION PLAN

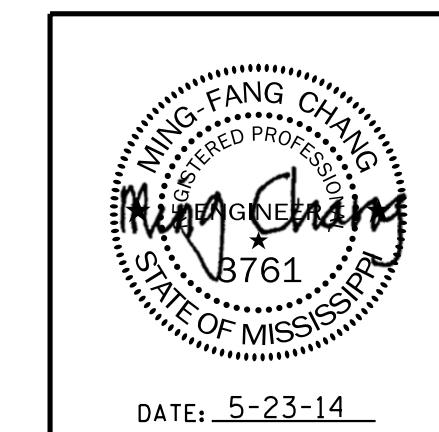
ECP-BR-A1 8112  
ECP-BR-A2 8113

**EROSION CONTROL - SR 471 BRIDGE B**

EROSION CONTROL - ELEVATION  
EROSION CONTROL - ELEVATION  
EROSION CONTROL - ELEVATION  
EROSION CONTROL - FOUNDATION PLAN  
EROSION CONTROL - FOUNDATION PLAN  
EROSION CONTROL - FOUNDATION PLAN

ECP-BR-B1 8114  
ECP-BR-B2 8115  
ECP-BR-B3 8116  
ECP-BR-B4 8117  
ECP-BR-B5 8118  
ECP-BR-B6 8119

BRIDGE DIVISION		
DATE	SHEET NO.	BY
10/17/14	8035-8042, 8092, 8111,	MKC
11/12/14	8092, 8002	MKC
11/17/14	8029	MKC



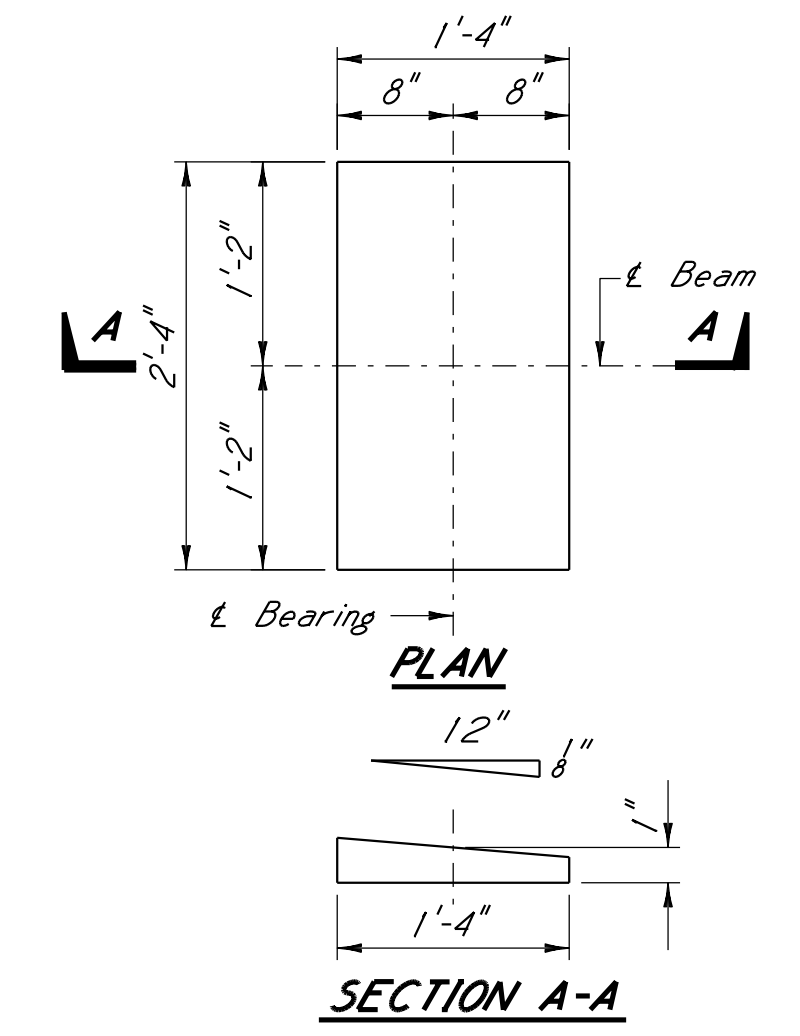
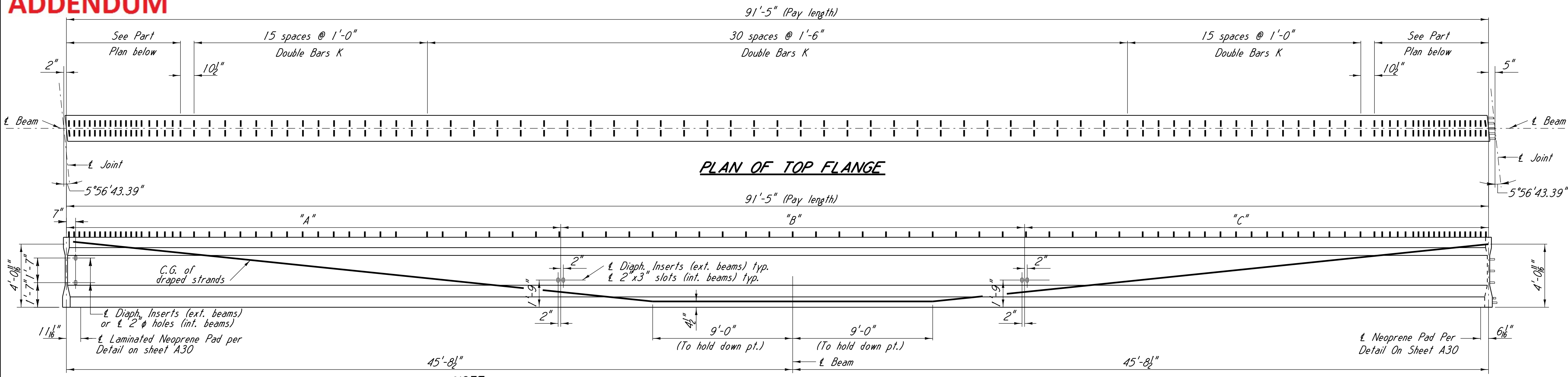
BY		MISSISSIPPI DEPARTMENT OF TRANSPORTATION	
REVISIONS		DETAILED INDEX (BRIDGES A AND B)	
DATE		100579/301000 PROJECT NO. STP-0062-02(017) RANKIN COUNTY	
DESIGNED		MICHAEL BAKER, JR., INC. - CONSULTING ENGINEERS Jackson, Mississippi	
CHECKED		WORKING NUMBER <b>DI-BR-1</b>	
DATE		SHEET NUMBER <b>8001</b>	

DATE: 5-23-14

DESIGNED MFC DETAILED RQH TRACED CADD  
CHECKED KJC ISSUED DATE 2014

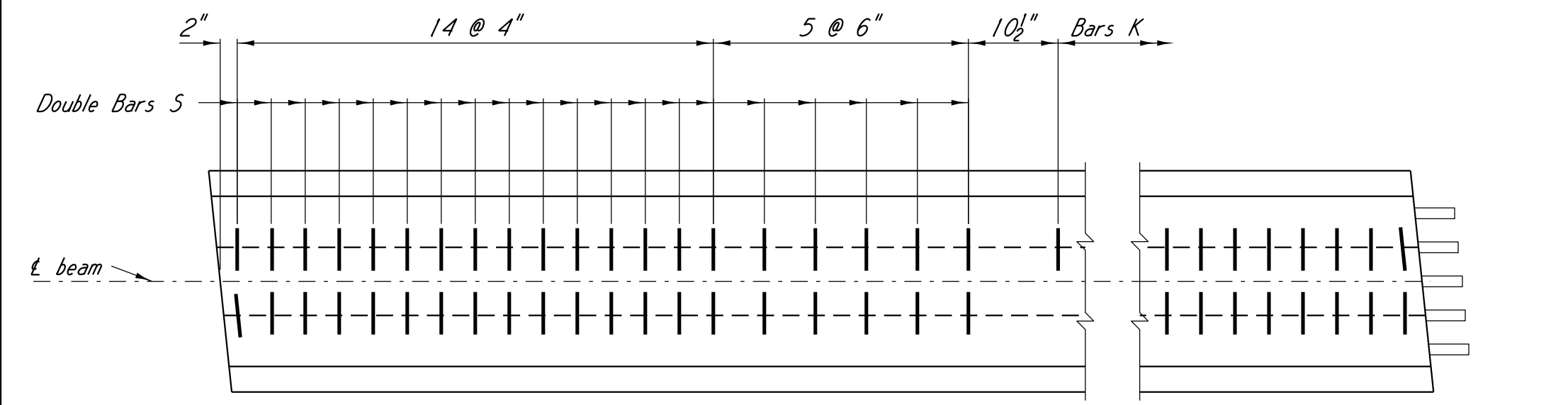
**ADDENDUM**

STATE	PROJECT NO.
MISS.	STP-0062-02(017)



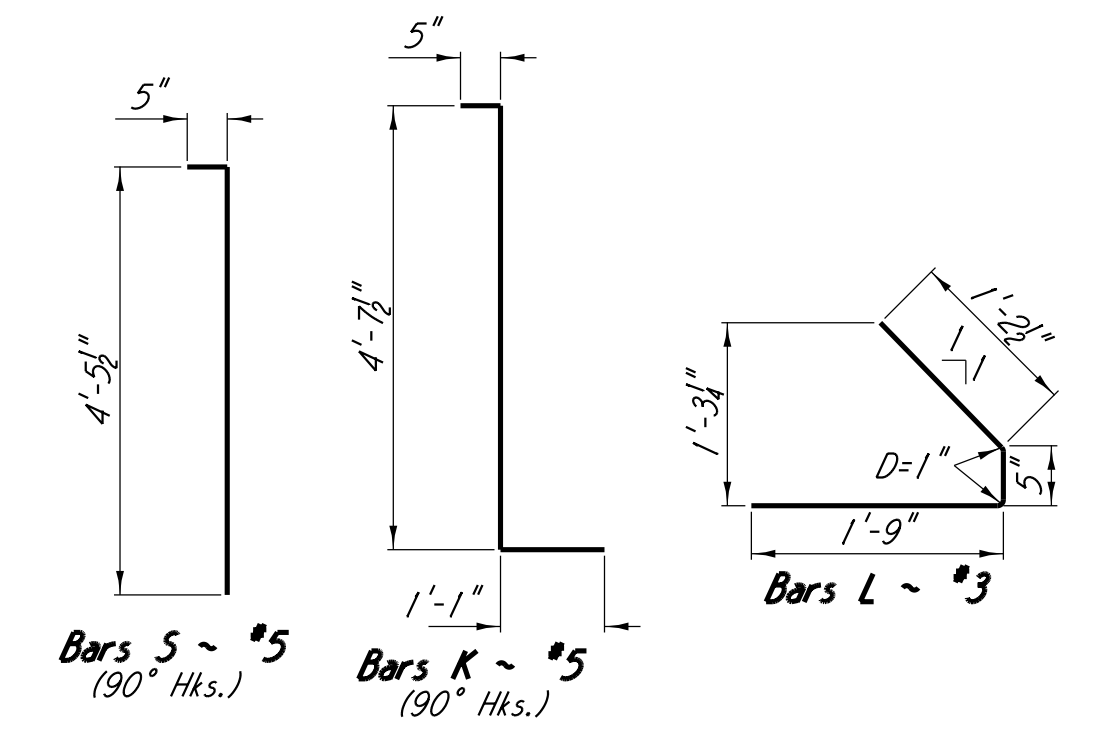
**NOTE:**  
See sheet A29 for Table of Beam Dimensions

**NOTE:** For beam end with #10 bars projecting (rt. end), cut strands flush-no coating required. For other beam end (lt. end), cut strands flush, and weatherproof with limestone colored Sonolastic (Sonneborn Building Products), GC-9 Synthacalk (Pecora Corp.), or approved equal, meeting the requirements of Federal specification no. TT-5-00227e or TT-5-00230C, applied according to manufacturer's directions.

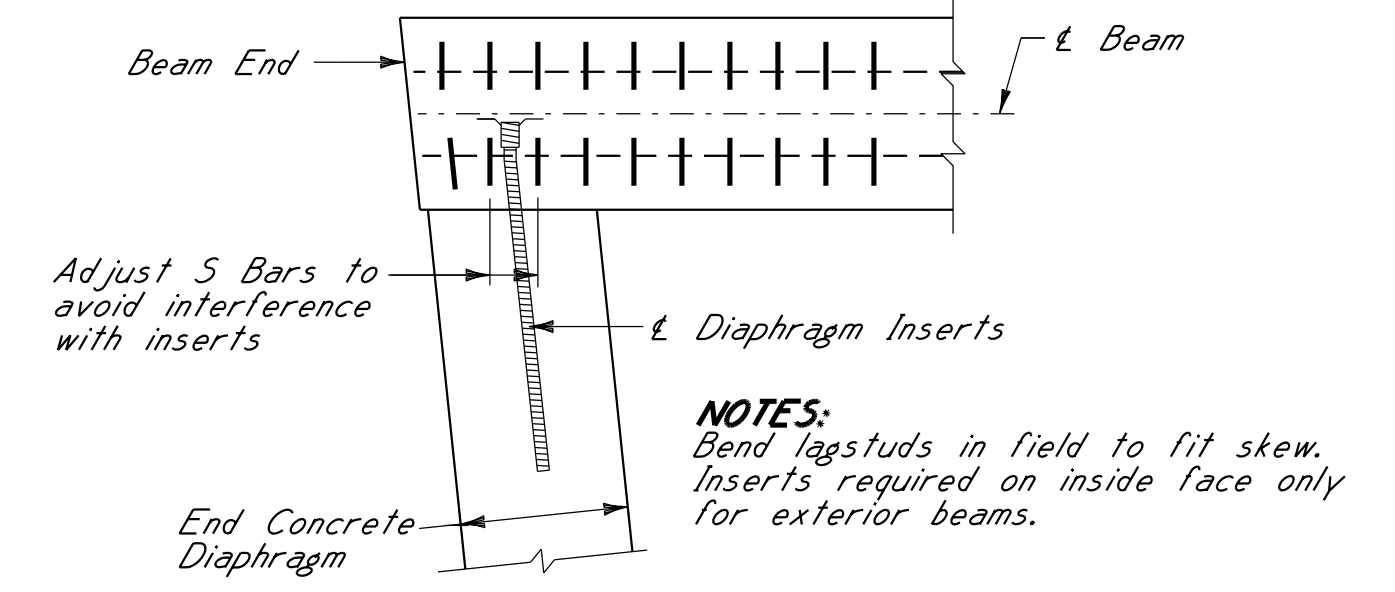


**PART PLAN**

**PART ELEVATION**  
Strands not shown for clarity

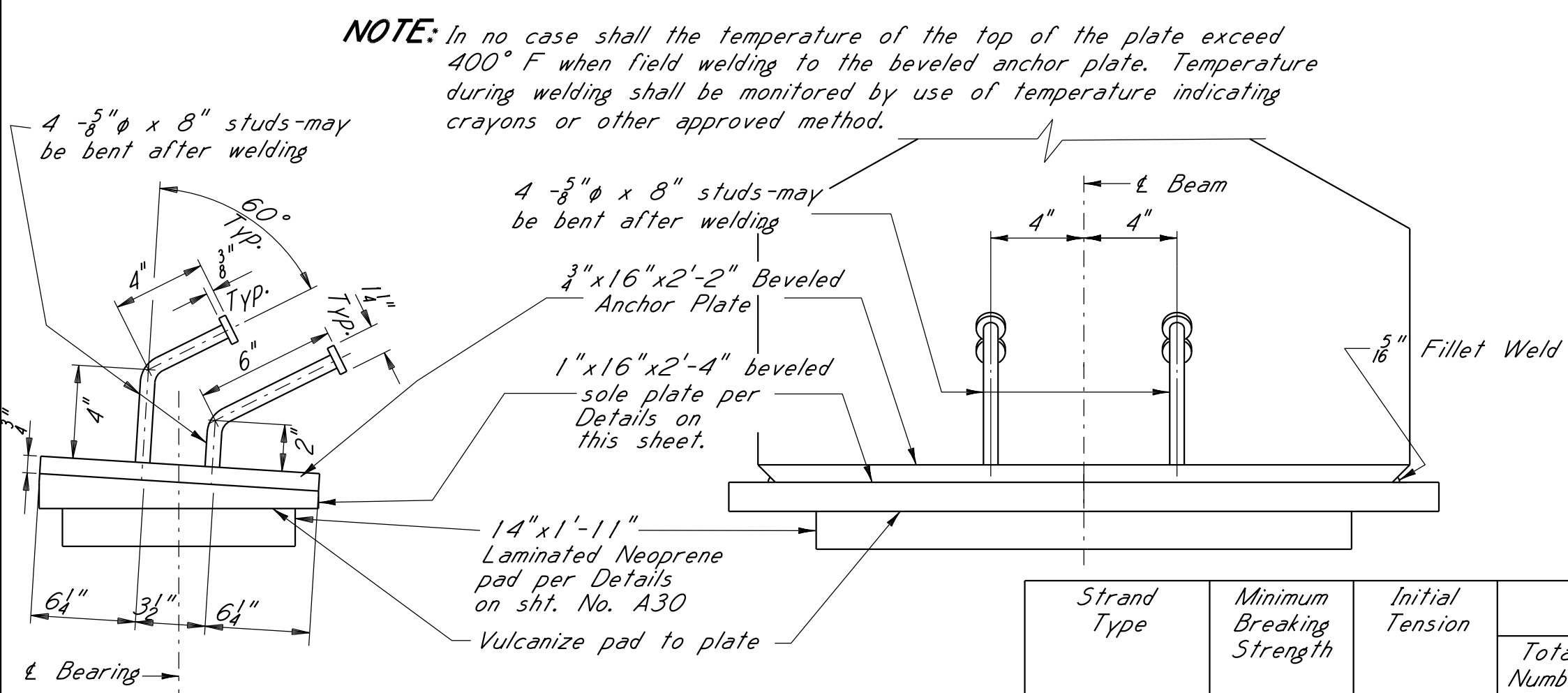


**BAR BENDING DETAILS**  
Dimensions are out to out

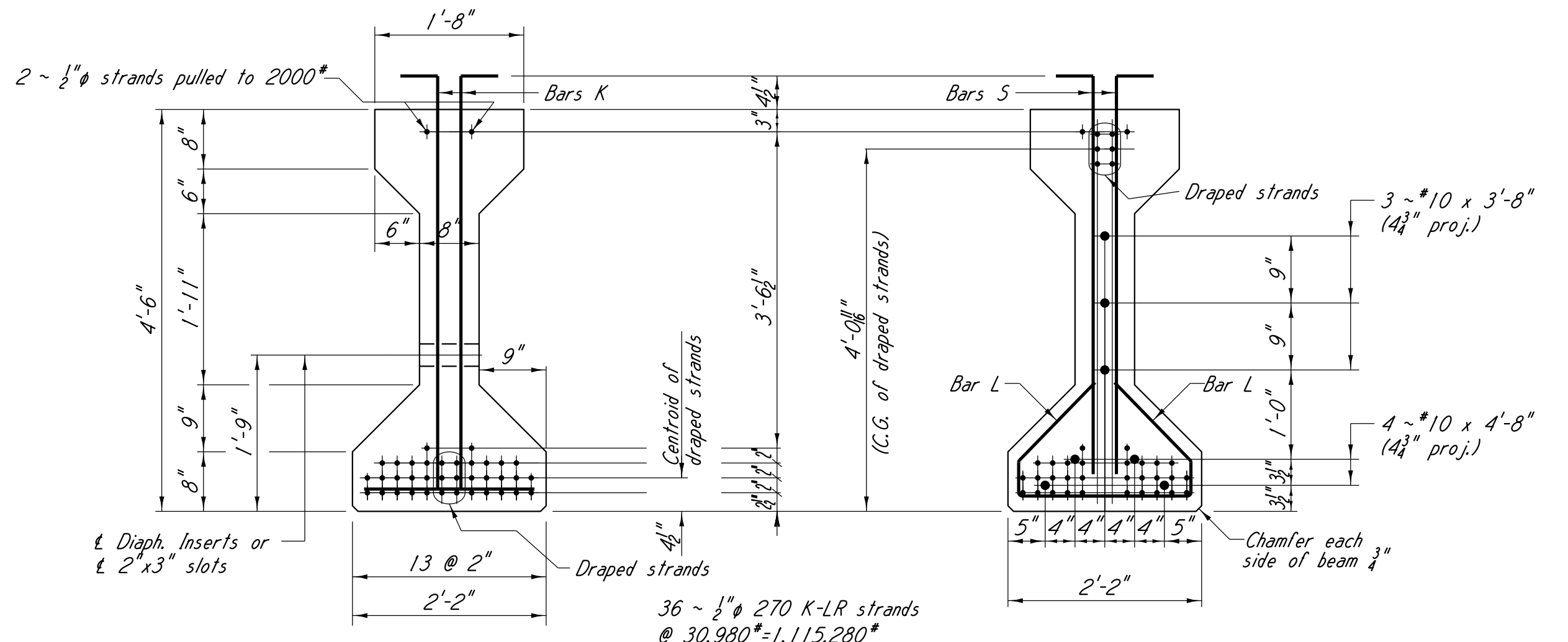


**DIAPHRAGM INSERT**

Showing diaphragm insert placement at end diaphragm (interior diaphragm similar)



**BEARING DETAILS**



**SECTION NEAR & SPAN**

**END ELEVATION**

**PRESTRESS REQUIREMENTS**

Strand Type	Minimum Breaking Strength lbs/strand	Initial Tension lbs/strand	Required Number And Location Of Strands			Centroid For Total Number Of Strands		Distance From Span To Hold-Down Point	Camber Limits	Deflection Diagram			Minimum Concrete Strength At Time Of Release			
			Total Number Strands	Straight Strands	Draped Strands	At Span	At Beam End			A	B	C				
1/2" 270 K-LR	41,300	30,980	36	30	4 1/8"	6	4 1/2"	4'-0 1/8"	4 1/8"	12"	9'-0"	0 To 3"	1 1/4"	1 1/8"	5/16"	4,300

For Deflection Diagram, see Misc. Span Details per sheet No. A24



DATE: 5-23-14

**GENERAL NOTES:**

Beams shall be manufactured in accordance with Mississippi Standard Specification for Road & Bridge Construction, 2004. The tops of beams shall be rough floated. At approximately the time of initial set the entire tops of beams shall be scrubbed transversely with a coarse wire brush to remove all laitance and produce a roughened surface for bonding slab. Other surfaces shall be finished per specifications. Strand pattern detailed is for 1/2" 270 K-LR strands. Shop drawings of prestressed beams shall include the type and location of all strands. The Bridge Engineer shall be notified if the camber of the beam is not within the limits shown in table. Concrete shall be class "FX" and:  
(a) Shall have a 28-day cylinder strength of 5,500 p.s.i.  
(b) At transfer of the tensioning load, the cylinder strength of the concrete shall be as shown in table. At the contractor's request a suggested concrete design mix will be furnished with the understanding that it is the contractor's responsibility to maintain 5,500 p.s.i. concrete. If any cylinder tests below 5,500 p.s.i., the beam represented will be held on the yard until the 28-day strength is determined and acceptance or rejection has been established.

**DESIGN DATA**

Specifications: AASHTO LRFD Bridge Design Specifications, 6th Edition, 2012 with Interim Revisions  
Stay-In-Place metal forms.... 18 lbs./ft.<sup>2</sup> (between flanges)

REVISIONS		BY		MFC		DATE		II-17-14		REVISOR		DATE					
MISSISSIPPI DEPARTMENT OF TRANSPORTATION UNDERPASS AT STA. 675+44.65																	
92 FT. BEAM DETAILS (END SPAN)																	
PROJECT NO. 100579/301000 STP-0062-02(017)																	
RANKIN COUNTY																	
MICHAEL BAKER, JR., INC. - CONSULTING ENGINEERS Jackson, Mississippi												WORKING NUMBER A26 OF 31					
DESIGNED MFC												DETAILED ROH		TRACED CADD		SHEET NUMBER 8029	
CHECKED KJC												ISSUED		DATE 2014			