

SECTION 905 -- PROPOSAL (CONTINUED)

I (We) hereby certify by execution of the Section 905 proposal below, that all certifications, disclosures and affidavits incorporated herein are deemed to be duly executed in the aggregate, fully enforceable and binding upon delivery of the bid proposal. I (We) further acknowledge that this certification shall not extend to the bid bond or alternate security which must be separately executed for the benefit of the Commission. This signature does not cure deficiencies in any required certifications, disclosures and/or affidavits. I (We) also acknowledge the right of the Commission to require full and final execution on any certification, disclosure or affidavit contained in the proposal at the Commission's election upon award. Failure to so execute at the Commission's request within the time allowed in the Standard Specifications for execution of all contract documents will result in forfeiture of the bid bond or alternate security.

Bidder acknowledges receipt of and has added to and made a part of the proposal and contract documents the following addendum (addenda):

ADDENDUM NO. 1 DATED 7/21/2015 ADDENDUM NO. DATED
 ADDENDUM NO. DATED ADDENDUM NO. DATED

Number	Description
1	Revised BidItems; Revised or Added Plan Sheet Nos. 8001, 8002, 8003, & 8025; Amendment EBS Download Required.

TOTAL ADDENDA: 1
 (Must agree with total addenda issued prior to opening of bids)

Respectfully Submitted,

DATE _____

 Contractor

BY _____
 Signature

TITLE _____

ADDRESS _____

CITY, STATE, ZIP _____

PHONE _____

FAX _____

E-MAIL _____

(To be filled in if a corporation)

Our corporation is chartered under the Laws of the State of _____ and the names, titles and business addresses of the executives are as follows:

 President Address

 Secretary Address

 Treasurer Address

The following is my (our) itemized proposal.

Revised 06/2015

EXB-0028-00(006) / 102488302 George County(ies)

Bridge Replacement on SR 198 over Rocky Creek, known as State Project No. EXB-0028-00(006) / 102488302 in George County.

Line No.	Item Code	Adj Code	Quantity	Units	Description [Fixed Unit Price]
Roadway Items					
0010	201-A001		1	Lump Sum	Clearing and Grubbing
0020	201-B001		1	Acre	Clearing and Grubbing
0030	202-A001		1	Lump Sum	Removal of Obstructions
0040	202-B005		3,844	Square Yard	Removal of Asphalt Pavement, All Depths
0050	202-B053		200	Linear Feet	Removal of Guard Rail Including Post, Blockouts & Hardware
0060	202-B064		209	Linear Feet	Removal of Pipe, 8" And Above
0070	203-A003	(E)	4,683	Cubic Yard	Unclassified Excavation, FM, AH
0080	203-EX017	(E)	30,621	Cubic Yard	Borrow Excavation, AH, FME, Class B9
0090	206-A001	(S)	43	Cubic Yard	Structure Excavation
0100	209-A004		4,797	Square Yard	Geotextile Stabilization, Type V, Non-Woven
0110	213-C001		2	Ton	Superphosphate
0120	217-A001		7,268	Square Yard	Ditch Liner
0130	219-A001		15	Thousand Gallon	Watering [\$20.00]
0140	220-A001		2	Acre	Insect Pest Control [\$30.00]
0150	221-A001	(S)	135	Cubic Yard	Portland Cement Concrete Paved Ditch
0160	223-A001		3	Acre	Mowing [\$50.00]
0170	224-A001		979	Square Yard	Soil Reinforcing Mat
0180	234-A001		2,991	Linear Feet	Temporary Silt Fence
0190	406-A001		1,867	Square Yard	Cold Milling of Bituminous Pavement, All Depths
0200	423-A001		1	Mile	Rumble Strips, Ground In
0210	501-E001		94	Linear Feet	Expansion Joints, Without Dowels
0220	502-A001	(C)	204	Square Yard	Reinforced Cement Concrete Bridge End Pavement
0230	603-CA090	(S)	120	Linear Feet	30" Reinforced Concrete Pipe, Class III, Rubber Type Gaskets
0240	603-CB003	(S)	2	Each	30" Reinforced Concrete End Section
0250	605-AA003	(S)	61	Square Yard	Geotextile for Subsurface Drainage, Type III
0260	605-W001	(GY)	5	Cubic Yard	Filter Material for Combination Storm Drain and/or Underdrains, Type FM
0270	605-W002	(GY)	8	Cubic Yard	Filter Material for Combination Storm Drain and/or Underdrains, Type FM
0280	606-B001		425	Linear Feet	Guard Rail, Class A, Type 1
0290	606-D012		4	Each	Guard Rail, Bridge End Section, Type I
0300	606-E001		4	Each	Guard Rail, Terminal End Section
0310	609-D007	(S)	146	Linear Feet	Combination Concrete Curb and Gutter Type 2 Modified
0320	615-A018	(S)	40	Linear Feet	Concrete Bridge End Barrier, 33.5"

Line No.	Item Code	Adj Code	Quantity	Units	Description [Fixed Unit Price]
0330	619-A1001		3,772	Linear Feet	Temporary Traffic Stripe, Continuous White
0340	619-A2001		4,368	Linear Feet	Temporary Traffic Stripe, Continuous Yellow
0350	619-A5001		530	Linear Feet	Temporary Traffic Stripe, Detail
0360	619-A6001		159	Linear Feet	Temporary Traffic Stripe, Legend
0370	619-C7001		29	Each	Two-Way Yellow Reflective High Performance Raised Marker
0380	619-D2001		273	Square Feet	Standard Roadside Construction Signs, 10 Square Feet or More
0390	619-G4001		192	Linear Feet	Barricades, Type III, Single Faced
0400	619-G4005		24	Linear Feet	Barricades, Type III, Double Faced
0410	619-G5001		28	Each	Free Standing Plastic Drums
0420	619-G7001		6	Each	Warning Lights, Type "B"
0430	620-A001		1	Lump Sum	Mobilization
0440	622-A002		1	Each	Engineer's Field Office Building, Type 2
0450	627-J001		32	Each	Two-Way Clear Reflective High Performance Raised Markers
0460	627-L001		29	Each	Two-Way Yellow Reflective High Performance Raised Markers
0470	630-A001		6	Square Feet	Standard Roadside Signs, Sheet Aluminum, 0.080" Thickness
0480	630-A002		38	Square Feet	Standard Roadside Signs, Sheet Aluminum, 0.125" Thickness
0490	630-C003		120	Linear Feet	Steel U-Section Posts, 3.0 lb/ft
0500	630-F001		22	Each	Delineators, Guard Rail, White
0510	815-A006	(S)	1,320	Ton	Loose Riprap, Size 100
0520	815-E001	(S)	1,720	Square Yard	Geotextile under Riprap
0530	907-216-A001		754	Square Yard	Solid Sodding
0540	907-225-A001		3	Acre	Grassing
0550	907-225-B001		2	Ton	Agricultural Limestone
0560	907-225-C001		6	Ton	Mulch, Vegetative Mulch
0570	907-225-D001		6	Ton	Mulch, Hydromulch
0580	907-226-A001		3	Acre	Temporary Grassing
0590	907-234-C002		642	Linear Feet	Super Silt Fence
0600	907-237-A003		1,000	Linear Feet	Wattles, 20"
0610	907-246-A002		178	Each	Sandbags
0620	907-249-A001		1,281	Ton	Riprap for Erosion Control
0630	907-403-A017	(BA1)	610	Ton	9.5-mm, ST, Asphalt Pavement
0640	907-403-A018	(BA1)	718	Ton	12.5-mm, ST, Asphalt Pavement
0650	907-403-A019	(BA1)	1,439	Ton	19-mm, ST, Asphalt Pavement
0660	907-403-C009	(BA1)	64	Ton	19-mm, ST, Asphalt Pavement, Trench Widening

Line No.	Item Code	Adj Code	Quantity	Units	Description [Fixed Unit Price]
0670	907-407-A001	(A2)	571	Gallon	Asphalt for Tack Coat
0680	907-413-E001		56	Linear Feet	Sawing and Sealing Transverse Joints in Asphalt Pavement
0690	907-601-B003	(S)	1	Cubic Yard	Class "B" Structural Concrete, Minor Structures
0700	907-603-ALT01	(S)	56	Linear Feet	18" Type A Alternate Pipe
0710	907-603-ALT02	(S)	364	Linear Feet	24" Type A Alternate Pipe
0720	907-605-O001	(S)	80	Linear Feet	6" Perforated Sewer Pipe for Underdrains, SDR 23.5
0730	907-605-P001	(S)	80	Linear Feet	6" Non-perforated Sewer Pipe for Underdrains, SDR 23.5
0740	907-617-A001		19	Each	Right-of-Way Marker
0750	907-618-A001		1	Lump Sum	Maintenance of Traffic
0760	907-626-C007		3,772	Linear Feet	6" Thermoplastic Double Drop Edge Stripe, Continuous White
0770	907-626-E005		4,368	Linear Feet	6" Thermoplastic Double Drop Traffic Stripe, Continuous Yellow
0780	907-626-G004		530	Linear Feet	Thermoplastic Detail Stripe, White
0790	907-626-H004		159	Linear Feet	Thermoplastic Legend, White
0800	907-699-A002		1	Lump Sum	Roadway Construction Stakes
ALTERNATE GROUP AA NUMBER 1					
0810	907-304-F002	(GT)	5,053	Ton	Size 610 Crushed Stone Base
ALTERNATE GROUP AA NUMBER 2					
0820	907-304-F003	(GT)	5,053	Ton	3/4" and Down Crushed Stone Base
ALTERNATE GROUP AA NUMBER 3					
0830	907-304-F004	(GT)	5,053	Ton	Size 825B Crushed Stone Base
Bridge Items					
0840	501-K001		1,067	Square Yard	Transverse Grooving
0850	803-B002	(S)	1	Each	Conventional Static Pile Load Test [\$5,000.00]
0860	803-C002	(S)	1,800	Linear Feet	14" x 14" Prestressed Concrete Piling
0870	803-C003	(S)	1,380	Linear Feet	16" x 16" Prestressed Concrete Piling
0880	803-I001	(S)	3	Each	PDA Test Pile
0890	803-J001	(S)	2	Each	Pile Restrike
0900	805-A001	(S)	86,636	Pounds	Reinforcement
0910	813-A001	(S)	483	Linear Feet	Concrete Railing
0920	815-A009	(S)	656	Ton	Loose Riprap, Size 300
0930	815-E001	(S)	554	Square Yard	Geotextile under Riprap
0940	907-804-A001	(S)	425	Cubic Yard	Bridge Concrete, Class AA
0950	907-804-C016	(S)	947	Linear Feet	40' Prestressed Concrete Beam, Type I+2
0960	907-804-C019	(S)	479	Linear Feet	60' Prestressed Concrete Beam, Type II+2

ADDENDUM

STATE	PROJECT NO.
MISS.	BR-0028-00(005)

DESCRIPTION OF SHEETS ~ BRIDGE DRAWINGS ~ CONTINUED ~ WORKING NUMBER ~ SHEET NUMBER

DETAILED INDEX (BRIDGE)
SUMMARY OF QUANTITIES (BRIDGE)
ESTIMATED QUANTITIES (BRIDGE)

DI-BR-1 8001
SO-BR 8002
EO-BR 8003

BRIDGE AT STA. 169+64.21

ORIGINAL PLANS FOR INFORMATION ONLY

Original Construction under Project No. F.A.P.-E14 REOP.

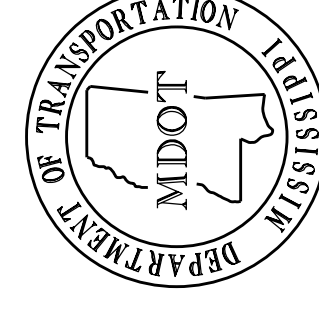
8023-8028

S.R. 198 OVER ROCKY CREEK (GENERAL NOTES)
S.R. 198 OVER ROCKY CREEK (LAYOUT SHEET)
S.R. 198 OVER ROCKY CREEK (FOUNDATION PLAN)
GENERALIZED SOIL PROFILE
END BENT NO. 1 DETAILS
END BENT NO. 6 DETAILS
END BENT DETAILS
INT. BENT NO. 2 DETAILS
INT. BENTS NO. 3 & 4 DETAILS
INT. BENT NO. 5 DETAILS
40 FT. SPAN NO. 1, 2, 4 & 5 DETAILS
40 FT. SPAN NO. 1, 2, 4 & 5 DETAILS
80 FT. SPAN NO. 3 DETAILS
80 FT. SPAN NO. 3 DETAILS
MISCELLANEOUS SPAN DETAILS
RAILING DETAILS
40 FT. BEAM DETAILS (TYPE I+2)
80 FT. BEAM DETAILS (TYPE III)
PRESTRESSED CONCRETE PILE DETAILS

BRIDGE EROSION CONTROL PLANS
ECBR-1 THRU ECBR-2

8029-8030

DATE	BRIDGE DIVISION	REVISIONS	SHEET NO.	BY
07/08/15			8025	MAW
07/09/15			8002,8003	BJJ



MISSISSIPPI DEPARTMENT OF TRANSPORTATION BRIDGE AT STA. 169+64.21 S.R. 198 ACROSS ROCKY CREEK DETAILED INDEX (BRIDGE)	
PROJECT	102488/302000 BR-0028-00(005)
COUNTY	GEORGE
WORKING NUMBER	DI-BR-1
SHEET NUMBER	8001
DESIGNER	Michael A. Wright, PE
CHECKER	Russell Thomas, EIT
ISSUE DATE	09/20/2015
DETAILER	Michael A. Wright, PE
DATE	
DIRECTOR OF STRUCTURES, STATE BRIDGE ENGINEER	JUSTIN WALKER, P.E.
DEP. DIR. OF STRUCTURES, ASST. STATE BRIDGE ENGINEER	SCOTT WESTERFIELD, P.E.

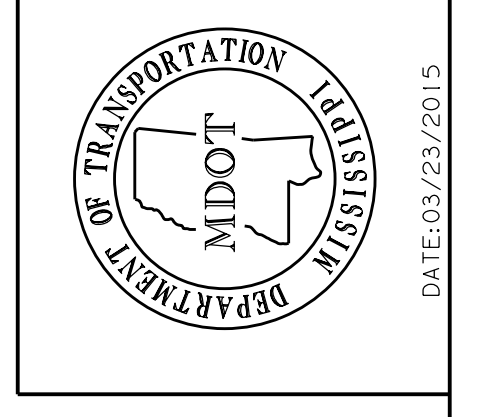
ADDENDUM

STATE	PROJECT NO.
MISS.	BR-0028-00(005)

BEGINNING STATION	SPANS-SIZE	OVERALL LENGTH	ITEM	Transverse Grooving		Conventional Static Pile Load Test		14" x 14" Prestressed Concrete Piling		16" x 16" Prestressed Concrete Piling		PDA Test Pile		Pile Restrike		Bridge Concrete, Class AA				
				S.Y.	Each	L.F.	L.F.	L.F.	Each	Each	Each	Each	Each	C.Y.						
169+64.21	(2 @ 40')-80- (2 @ 40') *Continuous For Live Load Only	241'-7"	Spans	1066	67												310	92		
			End Bents					1140					1					46	60	
			Int. Bents					660						2					67	92
			Total					1800						3					425	44

BEGINNING STATION	SPANS-SIZE	OVERALL LENGTH	ITEM	40 Ft. Prestressed Concrete Beam, Type 1+2		80 Ft. Prestressed Concrete Beam, Type III		Reinforcement		Concrete Railing		Loose Riprap, Size 300		Geotextile under Riprap			
				L.F.	L.F.	L.F.	L.F.	Lbs.	L.F.	Ton	S.Y.						
169+64.21	(2 @ 40')-80- (2 @ 40') *Continuous For Live Load Only	241'-7"	Spans	947	00	478	50	70986		480	00						
			End Bents					6840				300		656	0	554	0
			Int. Bents					8810									
			Total					86636							656	0	554

MISSISSIPPI DEPARTMENT OF TRANSPORTATION ESTIMATED QUANTITIES (BRIDGE ITEMS)		PROJECT 102488/302000 BR-0028-00(005)	COUNTY GEORGE	WORKING NUMBER EO-BR
		DATE 07-09-13	REVISIONS	CHECKER Barbara J. Jones, P.E.
		BY	DATE	ISSUE DATE 02/19/2015
				DIRECTOR OF STRUCTURES, STATE BRIDGE ENGINEER - JUSTIN WALKER, P.E.
				DEP. DIR. OF STRUCTURES, ASST. STATE BRIDGE ENGINEER - SCOTT WESTERFIELD, P.E.

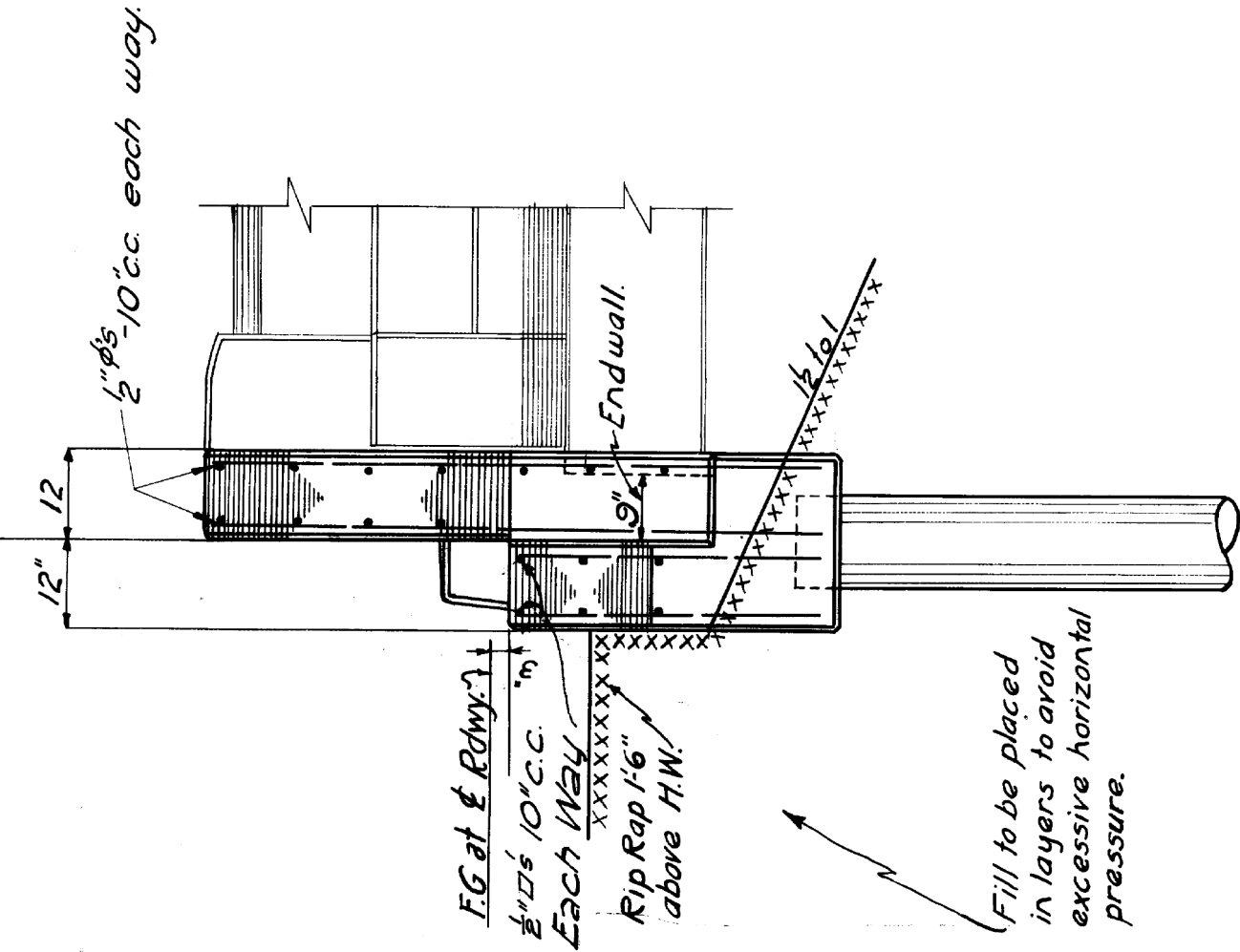


DESIGNER Barbara J. Jones, P.E.	CHECKER Barbara J. Jones, P.E.	DATE 02/19/2015	WORKING NUMBER EO-BR
DIRECTOR OF STRUCTURES, STATE BRIDGE ENGINEER - JUSTIN WALKER, P.E.	DEP. DIR. OF STRUCTURES, ASST. STATE BRIDGE ENGINEER - SCOTT WESTERFIELD, P.E.		SHEET NUMBER 8003

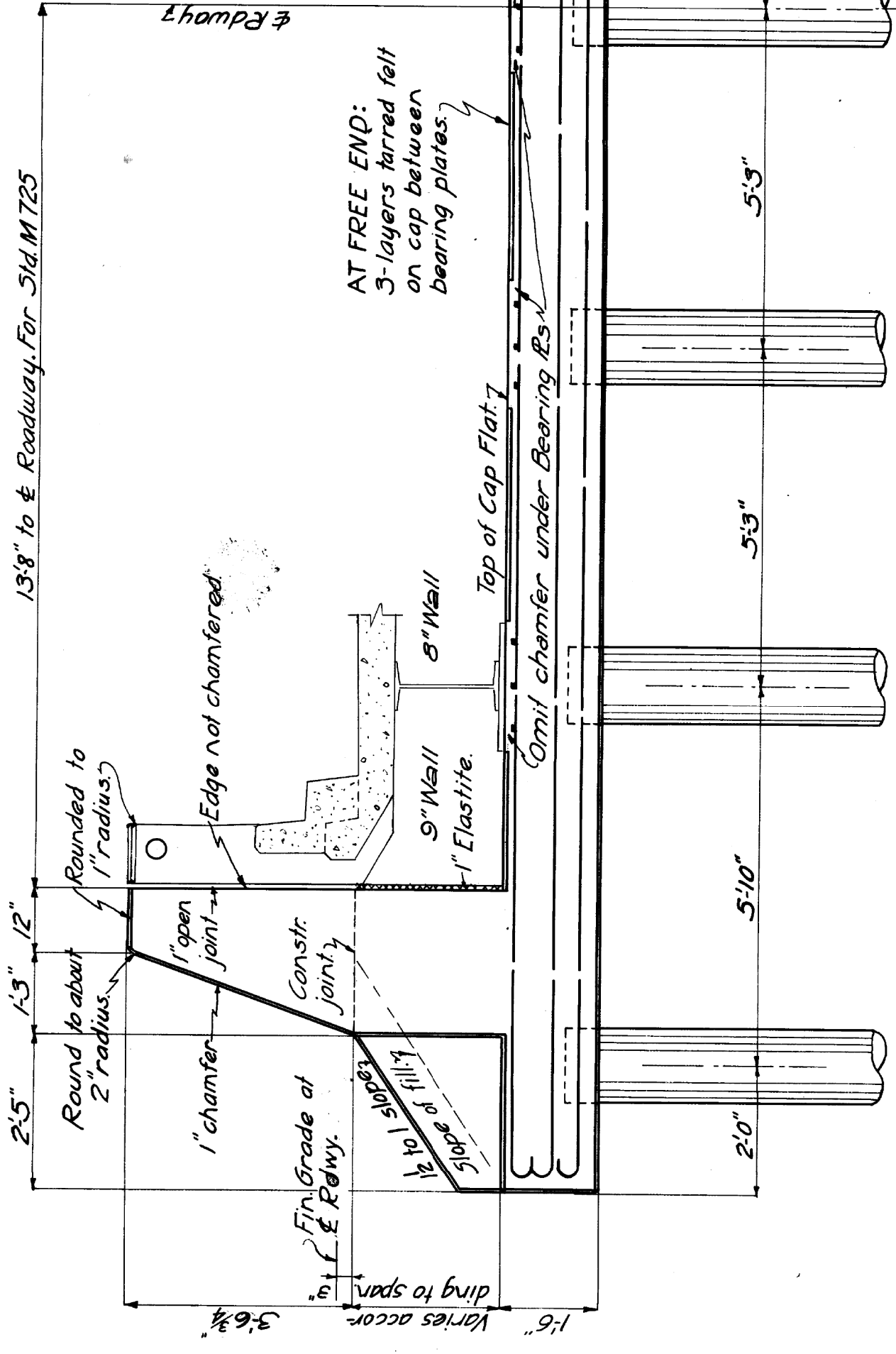
ADDENDUM

FED. ROAD DIST. NO.	STATE	FED. PROJ. NO.	CONTRACT YEAR	SHEET NO.	TOTAL SHEETS
8	MISS.		19		

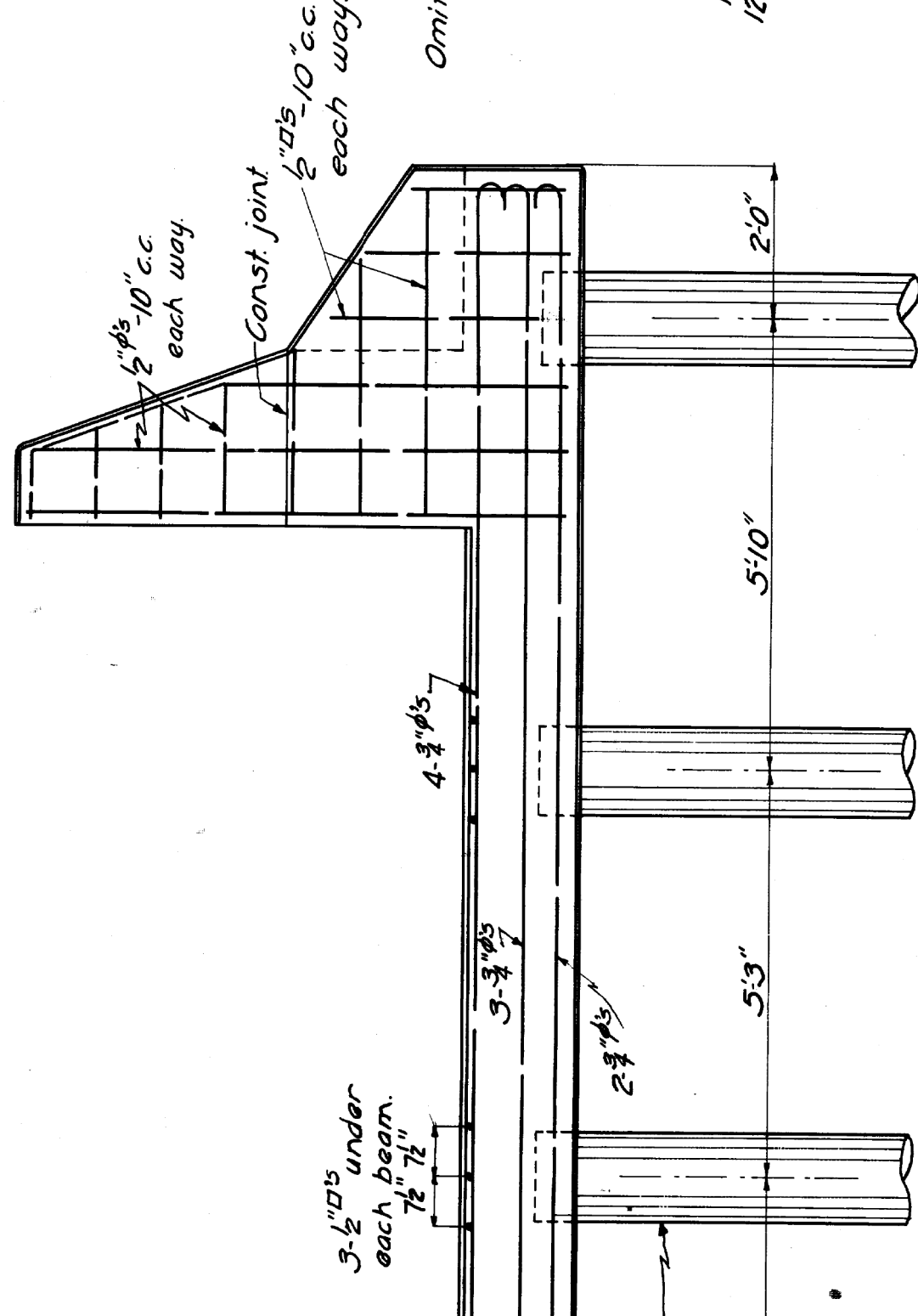
End of Bridge And End of Railing



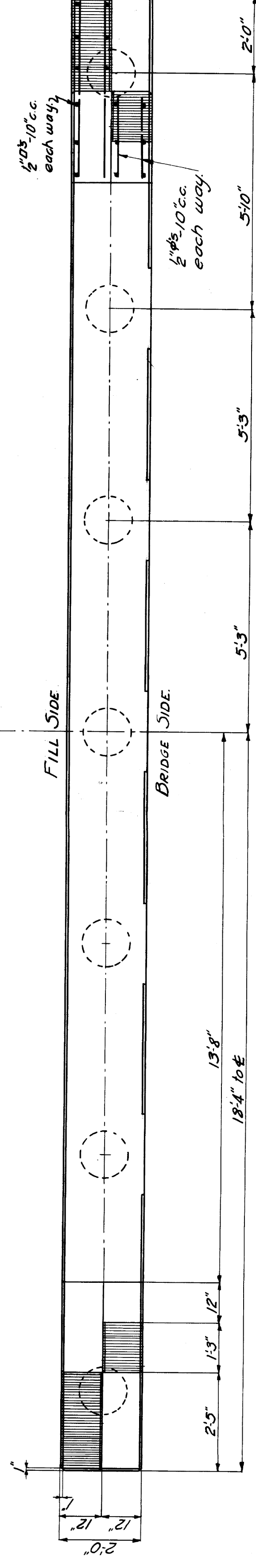
END ELEVATION OF BENT SHOWING SPAN



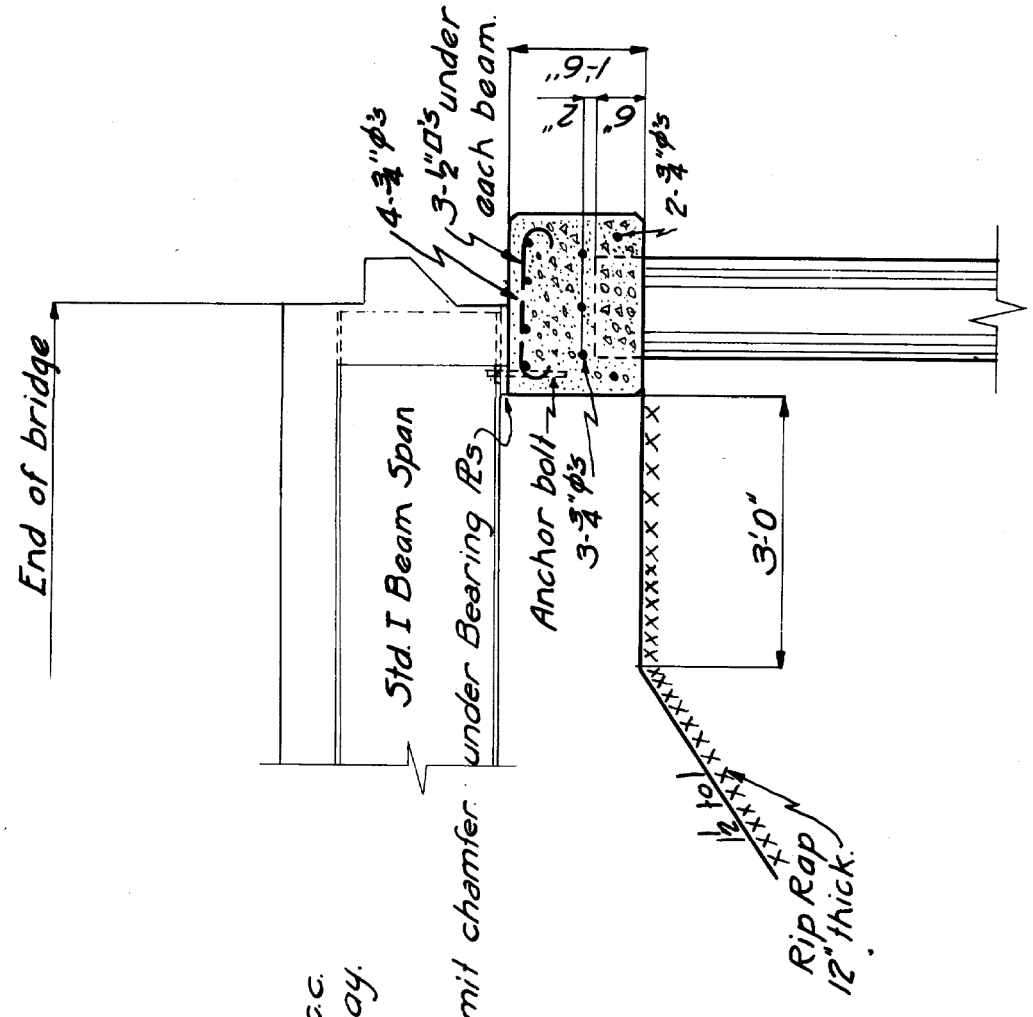
HALF ELEVATION FROM BRIDGE SIDE



HALF ELEVATION FROM FILL SIDE
Note: Old piles where grade to ground exceeds 12'; if considered advisable by the engineer.



PLAN



SECTION ON \pm RDWY.

GENERAL NOTES

- Concrete in cap to have Cement Factor of 1.58. Exposed edges of concrete to be chamfered 1" unless otherwise noted.
- Piles to have minimum diameter of 12" and length from butt.
- Piles to be treated by the full cell process, 16 lb. per cu. ft. creosole oil retained.
- Minimum bearing capacity of each pile to be 15 tons.
- Minimum penetration of piles to be 20 ft.
- Minimum weight of drop hammer for pile driving 2000 lb.
- Saturated tops of piles with hot creosole oil; retain on pile 20 min.
- Rip rap to be stone, grouted, or 1:3:6 conc. in 1 cu ft. sacks.

NOTE: New Billed Steel Required For Reinforcing Bars.

MISSISSIPPI STATE HIGHWAY DEPARTMENT
BRIDGE STANDARD
END BENT FOR I BEAM SPANS
CONCRETE CAP & CREO. PILES

Submitted by: _____ BRIDGE ENGINEER
Approved by: _____ STATE HIGHWAY ENGINEER

M-717

FOR INFORMATION ONLY

DATE	07/09/2015
REVISIONS	
ADDED SHEET	
BY	
MAW	

Drawn	9-9	1932	by	
Checked		19	by	
Revised	8-14	1933	by	22-33
	7-10	1935	by	2-17-35
	5-5		by	
	2-9		by	

