

SECTION 905 -- PROPOSAL (CONTINUED)

I (We) hereby certify by execution of the Section 905 proposal below, that all certifications, disclosures and affidavits incorporated herein are deemed to be duly executed in the aggregate, fully enforceable and binding upon delivery of the bid proposal. I (We) further acknowledge that this certification shall not extend to the bid bond or alternate security which must be separately executed for the benefit of the Commission. This signature does not cure deficiencies in any required certifications, disclosures and/or affidavits. I (We) also acknowledge the right of the Commission to require full and final execution on any certification, disclosure or affidavit contained in the proposal at the Commission's election upon award. Failure to so execute at the Commission's request within the time allowed in the Standard Specifications for execution of all contract documents will result in forfeiture of the bid bond or alternate security.

Bidder acknowledges receipt of and has added to and made a part of the proposal and contract documents the following addendum (addenda):

ADDENDUM NO. 1 DATED 8/17/2015 ADDENDUM NO. DATED
 ADDENDUM NO. DATED ADDENDUM NO. DATED

Number	Description
1	Revised or Added Plan Sheet Nos. 2, 4, 39-47, 49-53; Amendment EBS Download Required.

TOTAL ADDENDA: 1
 (Must agree with total addenda issued prior to opening of bids)

Respectfully Submitted,

DATE _____

 Contractor

BY _____
 Signature

TITLE _____

ADDRESS _____

CITY, STATE, ZIP _____

PHONE _____

FAX _____

E-MAIL _____

(To be filled in if a corporation)

Our corporation is chartered under the Laws of the State of _____ and the names, titles and business addresses of the executives are as follows:

 President Address

 Secretary Address

 Treasurer Address

The following is my (our) itemized proposal.

Revised 07/2015

STP-0040-01(023) / 101635302

Monroe County(ies)

ADDENDUM

DESCRIPTION OF SHEET	WKG. NO.	SH. NO.	DESCRIPTION OF SHEET	WKG. NO.	SH. NO.
TITLE SHEET		1	SPECIAL DESIGN SHEETS CONTINUED (56)		
DETAILED INDEX AND GENERAL NOTES SHEETS (3)			TRAFFIC CONTROL PLAN HIGHWAY 25 PHASE 1	TC-1	59
DETAILED INDEX	DI-1	2	TRAFFIC CONTROL PLAN HIGHWAY 25 PHASE 1	TC-2	60
DETAILED INDEX	DI-2	3	TRAFFIC CONTROL PLAN HIGHWAY 25 PHASE 1	TC-3	61
GENERAL NOTES	GN-1	4	TRAFFIC CONTROL PLAN HIGHWAY 25 PHASE 1	TC-4	62
			TRAFFIC CONTROL PLAN HIGHWAY 25 PHASE 2	TC-5	63
TYPICAL SECTION SHEETS (7)			TRAFFIC CONTROL PLAN HIGHWAY 25 PHASE 2	TC-6	64
TYPICAL SECTIONS - RELOCATED HWY 25 MAIN FACILITY	TS-1	5	TRAFFIC CONTROL PLAN HIGHWAY 25 PHASE 3	TC-7	65
TYPICAL SECTIONS - RELOCATED HWY 25 MAIN FACILITY	TS-2	6	TRAFFIC CONTROL PLAN HIGHWAY 25 PHASE 3	TC-8	66
TYPICAL SECTIONS - RELOCATED HWY 25 MAIN FACILITY	TS-3	7	TRAFFIC CONTROL PLAN HIGHWAY 25 PHASE 3	TC-9	67
TYPICAL SECTIONS - INTERCHANGE RAMP & FRONTAGE ROAD	TS-4	8	TRAFFIC CONTROL PLAN EXISTING HIGHWAY 25 & HIGHWAY 278	TC-10	68
TYPICAL SECTION - INTERCHANGE RAMP @ EXISTING US 278	TS-5	9	SIGNING DETAILS TWO LANE & FOUR LANE BRIDGE APPROACHES	BSD-1	69
TYPICAL SECTIONS - TRANSITION AT BRIDGE ENDS & GREENBRIAR ROAD	TS-6	10	TRAFFIC CONTROL PLAN PERMANENT BARRICADE WITH BERM	TCP-P	70
TYPICAL SECTION - THRU CHANNELIZED INTERSECTION	TS-7	11	VEGETATION SCHEDULE	VS-1	71
			MISCELLANEOUS CONSTRUCTION DETAILS	MD-1	72
QUANTITY SHEETS (10)			MISCELLANEOUS CONSTRUCTION DETAILS	MD-2	73
SUMMARY OF QUANTITIES	SQ-1	12	PAVEMENT MARKING DETAILS SR 25 RELOCATION B.O.P. TO STA. 404+00	PMD-1	74
SUMMARY OF QUANTITIES	SQ-2	13	PAVEMENT MARKING DETAILS SR 25 RELOCATION STA. 404+00 TO STA. 410+00 HWY 406 CONN / FR	PMD-2	75
SUMMARY OF QUANTITIES	SQ-3	14	PAVEMENT MARKING DETAILS SR 25 RELOCATION STA. 410+00 TO 434+00	PMD-3	76
SUMMARY OF QUANTITIES	SQ-4	15	PAVEMENT MARKING DETAILS SR 25 RELOCATION STA. 434+00 TO 458+00	PMD-4	77
ESTIMATED QUANTITIES (ROADWAY)	EQ-1	16	PAVEMENT MARKING DETAILS SR 25 RELOCATION STA. 458+00 TO 463+00 GREENBRIER ROAD TO 23+00	PMD-5	78
ESTIMATED QUANTITIES (ROADWAY)	EQ-2	17	PAVEMENT MARKING DETAILS GREENBRIER ROAD TO 23+00 TO 30+00	PMD-5A	79
ESTIMATED QUANTITIES TRAFFIC CONTROL	EQ-3	18	PAVEMENT MARKING DETAILS SR 25 RELOCATION STA. 463+00 TO 487+00	PMD-6	80
ESTIMATED QUANTITIES SIGN ASSEMBLY, DIRECTIONAL SIGNS & PERMANENT SIGNING	EQ-4	19	PAVEMENT MARKING DETAILS SR 25 RELOCATION STA. 487+00 TO 511+00	PMD-7	81
ESTIMATED QUANTITIES TRAFFIC CONTROL SIGNS	EQ-5	20	PAVEMENT MARKING DETAILS SR 25 RELOCATION STA. 511+00 TO 535+00	PMD-8	82
ESTIMATED QUANTITIES PAVEMENT MARKINGS	EQ-6	21	PAVEMENT MARKING DETAILS SR 25 RELOCATION STA. 535+00 TO 559+00	PMD-9	83
			PAVEMENT MARKING DETAILS SR 25 RELOCATION STA. 559+00 TO 583+00	PMD-10	84
PLAN AND PROFILE SHEETS (17)			PAVEMENT MARKING DETAILS SR 25 RELOCATION STA. 583+00 TO 607+00	PMD-11	85
RELOCATED HWY 25 STA. 383+00 - STA. 410+00	3	22	PAVEMENT MARKING DETAILS SR 25 RELOCATION STA. 607+00 TO 631+00	PMD-12	86
CONNECTOR ROAD STA. 20+00 - STA. 29+90	3A	23	PAVEMENT MARKING DETAILS SR 25 RELOCATION STA. 631+00 TO 655+00	PMD-13	87
RELOCATED HWY 25 STA. 410+00 - STA. 440+00	4	24	PAVEMENT MARKING DETAILS SR 25 S.W. RAMP EX. HWY 278 STA. 655+00 TO EXIST. HWY. 278	PMD-14	88
RELOCATED HWY 25 STA. 440+00 - STA. 470+00	5	25	PAVEMENT MARKING DETAILS EXISTING HIGHWAY 25 & HIGHWAY 278	PMD-15	89
RELOCATED HWY 25 STA. 470+00 - STA. 500+00	5A	26	FORM GRADES HIGHWAY 25	FG-1	90
RELOCATED HWY 25 STA. 500+00 - STA. 530+00	6	27	FORM GRADES HIGHWAY 25	FG-2	91
RELOCATED HWY 25 DETENTION BASIN	7	28	FORM GRADES HIGHWAY 25	FG-3	92
RELOCATED HWY 25 STA. 530+00 - STA. 560+00	7-A	29	FORM GRADES HIGHWAY 25	FG-4	93
RELOCATED HWY 25 STA. 560+00 - STA. 590+00	8	30	FORM GRADES HIGHWAY 25	FG-5	94
RELOCATED HWY 25 STA. 590+00 - STA. 620+00	9	31	FORM GRADES HIGHWAY 25	FG-6	95
RELOCATED HWY 25 STA. 620+00 - STA. 650+00	9A	32	FORM GRADES HIGHWAY 25	FG-7	96
SOUTHWEST RAMP @ 278 BY-PASS STA. 559+00 - STA. 576+00	9B	33	FORM GRADES HIGHWAY 25	FG-8	97
NORTHWEST RAMP @ 278 BY-PASS STA. 576+00 - STA. 597+00	9C	34	FORM GRADES HIGHWAY 25	FG-9	98
RELOCATED HWY 25 STA. 590+00 - STA. 620+00	10	35	FORM GRADES HIGHWAY 25	FG-10	99
RELOCATED HWY 25 STA. 620+00 - STA. 650+00	11	36	FORM GRADES HIGHWAY 25	FG-11	100
SOUTHWEST RAMP AT U.S.278 STA. 649+00 - STA. 669+00	12	37	BRIDGE END PAVEMENT WITH RAIL AND OVERLAY	BE-1C	101
EX HWY 25 EX HWY 278	13	38	33.5" BRIDGE END PAVEMENT RAIL	BE-PR-1B	102
SPECIAL DESIGN SHEETS (20)			DETAILS OF DITCH TREATMENT	DT-1	103
RELOCATED HWY 25 STA. 383+00 - STA. 410+00	ECP3	39	TYPICAL TEMPORARY EROSION / SEDIMENT CONTROL APPLICATIONS	ECD-1	104
CONNECTOR ROAD STA. 20+00 - STA. 29+90	ECP3A	40	DETAIL OF SEDIMENT BARRIER APPLICATIONS	ECD-2	105
RELOCATED HWY 25 STA. 410+00 - STA. 440+00	ECP4	41	DETAILS OF SILT FENCE INSTALLATION	ECD-3	106
RELOCATED HWY 25 STA. 440+00 - STA. 470+00	ECP5	42	DITCH CHECK STRUCTURES, TYPICAL APPLICATIONS AND DETAILS	ECD-4	107
RELOCATED HWY 25 STA. 470+00 - STA. 500+00	ECP5A	43	TEMPORARY EROSION, SEDIMENT AND WATER POLLUTION CONTROL MEASURES,	ECD-5	108
RELOCATED HWY 25 STA. 500+00 - STA. 530+00	ECP6	44	SILT FENCE AND HAY BALE DITCH CHECKS	ECD-6	109
RELOCATED HWY 25 STA. 530+00 - STA. 560+00	ECP7	45	DETAILS OF EROSION CONTROL WATTLE DITCH CHECK	ECD-7	110
RELOCATED HWY 25 STA. 560+00 - STA. 590+00	ECP8	46	DETAILS OF EROSION CONTROL SILT DIKE DITCH CHECK	ECD-8	111
RELOCATED HWY 25 STA. 590+00 - STA. 590+00	ECP9	47	ROCK DITCH CHECK	ECD-9	112
RELOCATED HWY 25 STA. 560+00 - STA. 590+00	ECP9A	48	ROCK DITCH CHECK WITH SUMP EXCAVATION	ECD-10	113
SOUTHWEST RAMP @ 278 BY-PASS STA. 559+00 - STA. 576+00	ECP9B	49	INLET PROTECTION TYPICAL APPLICATIONS AND DETAILS	ECD-11	114
NORTHWEST RAMP @ 278 BY-PASS STA. 576+00 - STA. 597+00	ECP9C	50	INLET PROTECTION DETAILS FOR COARSE AGGREGATE ON GRADES & SAGS		
RELOCATED HWY 25 STA. 590+00 - STA. 620+00	ECP10	51			
RELOCATED HWY 25 STA. 620+00 - STA. 650+00	ECP11	52			
SOUTHWEST RAMP AT U.S.278 STA. 649+00 - STA. 669+00	ECP12	53			
INTERCHANGE LAYOUT RELOCATED HWY 25 / US 278 BY-PASS	IL-1	54			
INTERSECTION DETAIL HIGHWAY 25 & EXISTING 25 CONNECTOR	ID-1	55			
INTERSECTION DETAIL HIGHWAY 25 & GREENBRIAR RD	ID-2	56			
DETAIL CONSTRUCTION SIGNING U.S. 25 RELOCATION	DCS-1	57			
TRAFFIC CONTROL PLAN NARRATIVE PHASE 1, 2 & 3	NAR-1	58			



ENGINEERING SOLUTIONS		
PS & E PLANS-DATE...2/23/15		
FMS CON. #	101635	302000
FMS CON. #	101635	303000
REVISIONS		
DATE	SHEET NO.	BY
3/13/15	1,2,3,13,16,17,6301,	DSP
	6315,6322,6325	
4/9/15	12,13,14,15,17,22,23,26,	DSP
	28,29,30,32,35,36	
7/3/15	17,22,23,30	DSP
8/5/15	4,39,40,41,42,43,44,45	DSP
	46,47,49,50,51,52,53	

MISSISSIPPI DEPARTMENT OF TRANSPORTATION	
DETAILED INDEX	
PROJECT NO. STP-0040-01(023)V21 COUNTY : MONROE	
FILENAME: 002_SHT_DI-1.DGN	WORKING NUMBER DI-1
DESIGN TEAM LH & JW CHECKED jwhite DATE July 2014	SHEET NUMBER 2

B:\5\2015 2-48-15 PM002 SHT DI-1.DGN MISSISSIPPI DEPARTMENT OF TRANSPORTATION

GENERAL NOTES

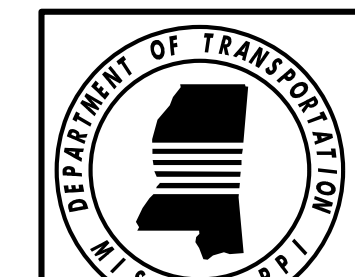
STATE	PROJECT NO.
MISS.	STP-0040-01(023)V21

- ① FOR A LIST OF PUBLIC UTILITY OWNERS, SEE WK. SH. 3. EXISTING UNDERGROUND UTILITY LINES ARE SHOWN ON THE DRAWINGS BASED UPON INFORMATION AVAILABLE TO THE ENGINEER AT THE TIME OF SURVEY. THE ENGINEER CANNOT AND DOES NOT WARRANT THAT THIS INFORMATION IS COMPLETE OR ACCURATE. THE CONTRACTOR MUST COORDINATE DIRECTLY WITH THE INVOLVED UTILITY OWNERS TO HAVE UNDERGROUND UTILITY LINES FIELD LOCATED IN ADVANCE OF CONSTRUCTION.
- ② A SOIL PROFILE HAS BEEN PREPARED FOR THIS PROJECT USING SAMPLES TAKEN FROM HOLES AT THE LOCATIONS INDICATED IN THE TEST REPORTS. THIS SOIL PROFILE IS ON FILE IN THE DISTRICT AND CENTRAL CONSTRUCTION OFFICES AND IS AVAILABLE FOR EXAMINATION. THE DEPARTMENT DOES NOT GUARANTEE THAT THE MATERIALS AS SHOWN IN THE REPORTS ARE NECESSARILY TO BE FOUND OUTSIDE THE TEST HOLES.
- ③ THE 25% SHRINKAGE FACTOR USED IN THE EARTHWORK CALCULATIONS IS FOR DESIGN ESTIMATING PURPOSES ONLY.
- ④ IT SHALL BE THE RESPONSIBILITY OF THE CONTRACTOR TO PROTECT EXISTING STRUCTURES SUCH AS PIPES, INLETS, APRONS, BRIDGES, ETC., FROM DAMAGE WHICH MIGHT OCCUR DURING CONSTRUCTION. EXTREME CARE SHALL BE EXERCISED IN UNDERCUT AREAS AND THE UNDERCUT DEPTH MAY BE ADJUSTED AT CROSS DRAINS, AS DIRECTED BY THE ENGINEER. THE CONTRACTOR SHALL REPLACE OR REPAIR, AS DIRECTED BY THE ENGINEER, ANY STRUCTURES DAMAGED DURING THE LIFE OF THE CONTRACT. NO PAYMENT WILL BE MADE FOR REPLACEMENT OR REPAIR OF DAMAGED ITEMS.
- ⑤ VOIDS CREATED BY THE REMOVAL OF POSTS, CONCRETE ANCHORS, FOOTINGS, ETC., SHALL BE BACKFILLED WITH GRANULAR MATERIAL OR TOPSOIL AND TAMPED IN ACCORDANCE WITH SECTION 203 OF STANDARD SPECIFICATIONS. THE BACKFILL MATERIAL IS NOT A SEPARATE PAY ITEM. THE REMOVAL IS TO BE PAID UNDER ITEM 201-A001 (LUMP SUM).
- ⑥ WORK ON STRUCTURES FOR THIS PROJECT REQUIRES EXCAVATION IN THE VICINITY OF TRAFFIC. THEREFORE, THE RISK OF A FAILURE OCCURRING DURING THE EXCAVATION REQUIRES THAT EXTREME CAUTION BE EXERCISED. IT SHALL BE THE CONTRACTOR'S RESPONSIBILITY TO PLACE ANY BRACING, SHORING OR GROUND SUPPORT SYSTEM THAT IS DEEMED NECESSARY TO PREVENT A FAILURE AND PROTECT THE PERSONS WORKING NEAR THE EXCAVATION, THE PUBLIC THAT MAY BE ABOVE THE EXCAVATION OR ANY STRUCTURE ADJACENT TO THE EXCAVATION. ALL COSTS FOR ANY PROTECTIVE MEASURES, INCLUDING THE MATERIALS AND LABOR FOR DESIGNING, DRAWING AND CONSTRUCTING THE FACILITY, SHALL BE INCLUDED IN THE PRICE BID FOR OTHER CONTRACT ITEMS.
- ⑦ FLUORESCENT ORANGE SHEETING SHALL BE USED ON ALL CONSTRUCTION AND TRAFFIC CONTROL SIGNS EXCEPT FOR THOSE DESIGNATED IN THE PLANS TO BE BLACK LEGEND AND BORDER ON WHITE BACKGROUND.
- ⑧ ALL SIGNS, PAVEMENT MARKINGS AND TEMPORARY TRAFFIC CONTROL DEVICES ARE TO CONFORM TO THE MUTCD (MANUAL ON UNIFORM TRAFFIC CONTROL DEVICES) (2009 EDITION AND ALL SUBSEQUENT REVISIONS).
- ⑨ ALL PROPOSED PAVEMENT MARKINGS, AND PERMANENT SIGNING SHALL BE INSTALLED BEFORE OPENING THE NEW FACILITY TO TRAFFIC, UNLESS DIRECTED AND SPECIFICALLY APPROVED OTHERWISE BY THE ENGINEER.
- ⑩ ALL RIPRAP REQUIRED ON THIS PROJECT IS TO BE FREE OF VEGETATION THROUGHOUT THE LIFE OF THE PROJECT.
- ⑪ ALL CRUSHED STONE SHOULDERS TO BE ROLLED TO REFUSAL (NO DENSITY REQUIRED).

- ⚠ ⑫ THE EROSION CONTROL DEVICES REFERENCED IN THESE PLANS ARE A MINIMUM MEASUREMENT. IT IS THE RESPONSIBILITY OF THE CONTRACTOR TO INSURE THAT SILT DOES NOT LEAVE THE RIGHT OF WAY OR CONTAMINATE WATERS OF THE U.S. DURING CONSTRUCTION.
- ⑬ EXISTING DRAIN PIPES, CULVERTS, CROSS DRAINS, AND OTHER DRAINAGE STRUCTURES THAT ARE TO REMAIN SHALL BE CLEANED OF SILT, TRASH, AND DEBRIS SATISFACTORILY TO THE ENGINEER. ALL COSTS OF SAID CLEANING WILL BE CONSIDERED SUBSIDIARY TO THE CONTRACT AND WILL NOT BE MEASURED AND PAID FOR DIRECTLY. EXISTING DRAIN PIPES, CULVERTS, SIDE DRAINS, AND CROSS DRAINS WITHIN THE PROJECT LIMITS THAT ARE NOT TO BE UTILIZED, SHALL BE REMOVED OR ABANDONED IN PLACE.
- ⑭ ALL EXCAVATION FOR THE SIGN POSTS OR FOOTINGS IS TO BE INCLUDED IN THE COST FOR OTHER ITEMS BID FOR CONSTRUCTION.
- ⑮ ALL EXISTING SIGNS AND SUPPORTS REMOVED UNDER THIS CONTRACT SHALL BECOME THE PROPERTY OF THE CONTRACTOR.
- ⑯ ALL POST AND PIPE LENGTHS ARE ESTIMATED. CONTRACTOR IS RESPONSIBLE FOR PERFORMING FIELD SURVEY TO DETERMINE THE EXACT LENGTH REQUIRED.
- ⑰ DIRECT APPLIED LEGEND, BORDERS, AND SHIELD ARE TO BE USED ON ALL GUIDE SIGNS. RIVETS WILL NOT BE ALLOWED.
- ⑱ ERECTION DATES ARE TO BE LEGIBLY WRITTEN ON THE BACK OF ALL SIGNS WITH A SANFORD MEANSTREAK WATERPROOF FORMULA PERMANENT MARKING STICK.
- ⑲ THE LOCATION AND SPACING OF SIGNS SHOWN ON THE PLANS ARE APPROXIMATE AND MAY BE ADJUSTED AS NECESSARY TO FIT FIELD CONDITIONS. ALL SIGNS SHALL BE SPACED A MINIMUM OF 250 FEET APART WHERE POSSIBLE. THE ACTUAL LOCATION OF SIGNS WILL BE AS DIRECTED BY THE ENGINEER.
- ⑳ WIRE BACKING IS REQUIRED ON ALL SILT FENCES.
- ㉑ GEOTEXTILE FABRIC IS REQUIRED UNDER ALL RIP-RAP WITH THE EXCEPTION OF DT. CHECKS.
- ㉒ BIDDERS ARE ADVISED THAT HARD COPIES OF ANY ADDENDA FOR THIS PROJECT WILL NO LONGER BE MAILED. ALL ADDENDA FOR THIS PROJECT WILL BE POSTED TO www.mdot.ms.gov UNDER THE PROPOSAL ADDENDA COLUMN. IT IS THE BIDDER'S RESPONSIBILITY TO CHECK AND SEE IF ANY ADDENDA HAVE BEEN POSTED FOR THIS PROJECT. PLEASE CONTACT CONTRACT ADMINISTRATION DIVISION AT 601-359-7700 FOR ANY QUESTIONS REGARDING ELECTRONIC ADDENDA.
- ㉓ PRIOR TO EARTHWORK OPERATIONS, THE EXISTING TOP 4" TOPSOIL IS TO BE STRIPPED AND STOCKPILED. AFTER THE GRADING OPERATIONS ARE COMPLETED, SAID TOPSOIL SHALL BE PLACED ON ALL AREAS THAT ARE NOT TO BE PAVED OR OTHERWISE PROTECTED, IN ACCORDANCE WITH SECTION 211 OF THE SPECIFICATIONS, OR THE VEGETATION SCHEDULE (SEE WK. SH. VS-1). EXISTING TOPSOIL AND ALL COSTS ASSOCIATED WITH STRIPPING, HAULING, STOCKPILING, AND PLACEMENT OF THE EXISTING TOPSOIL IS TO BE ABSORBED IN OTHER EARTHWORK ITEMS.

B:\5\2015\2-11\B-13\PA004_SHT_GN-1.dgn

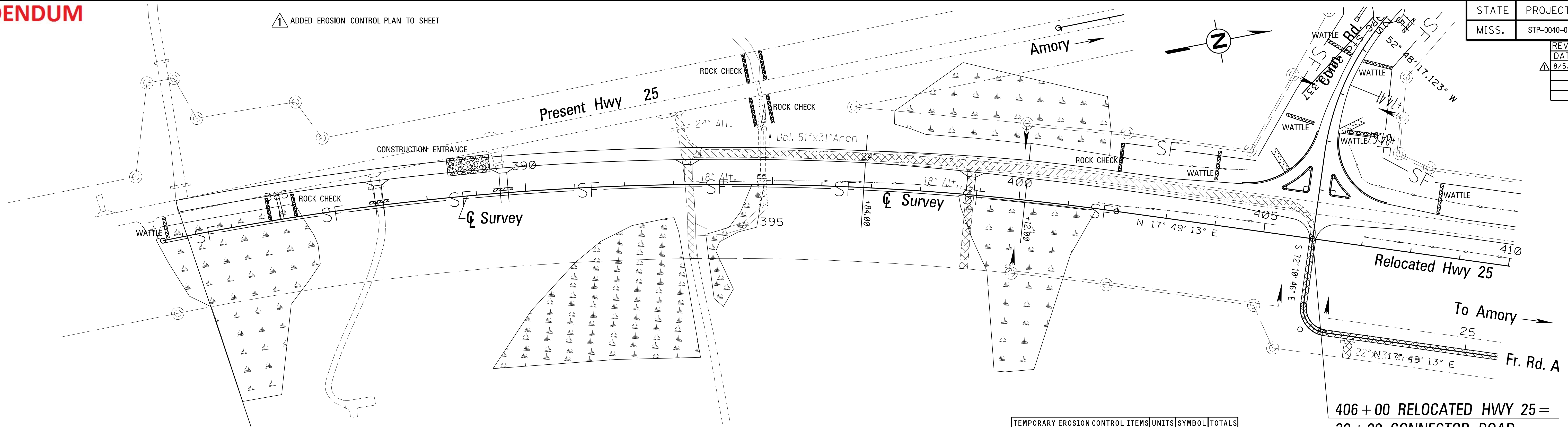
MISSISSIPPI DEPARTMENT OF TRANSPORTATION			
GENERAL NOTES			
PROJECT NO. STP-0040-01(023)V21 COUNTY : MONROE			
REVISION		BY	
DATE	REVISED NOTE #12	DSP	BY
FILENAME: gn1.dgn		WORKING NUMBER	
DESIGN TEAM		GN-1	
ESI	CHECKED	DATE	
		SHEET NUMBER	
		4	



ADDENDUM

▲ ADDED EROSION CONTROL PLAN TO SHEET

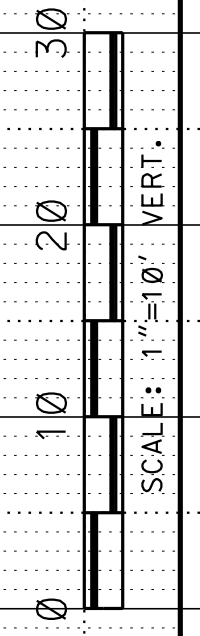
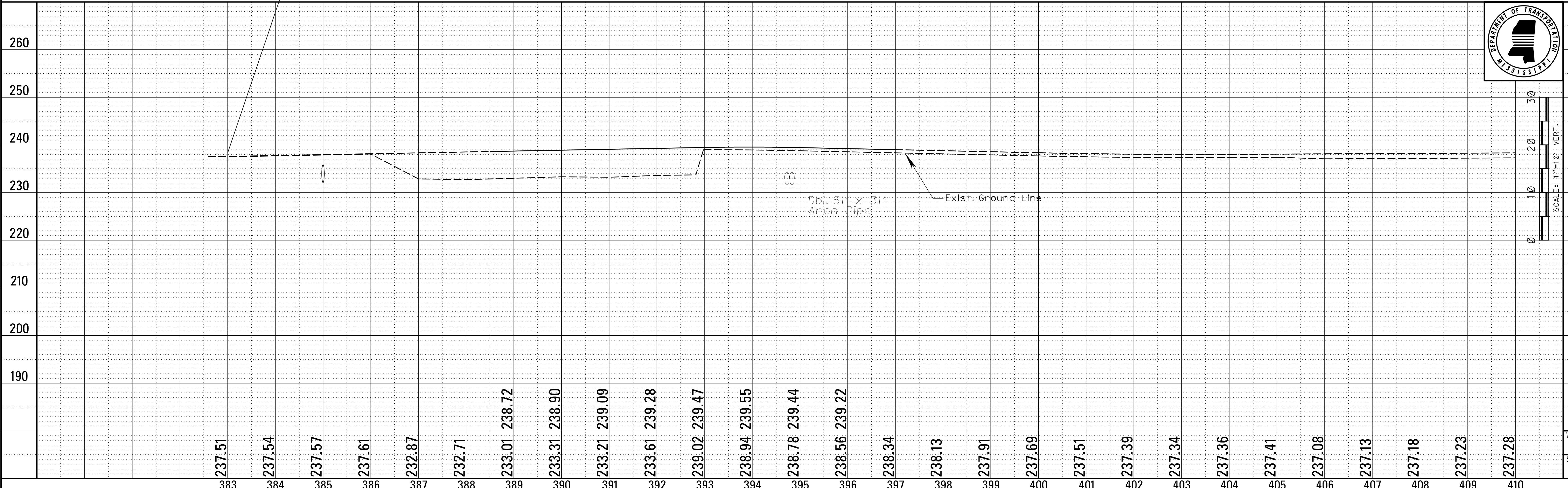
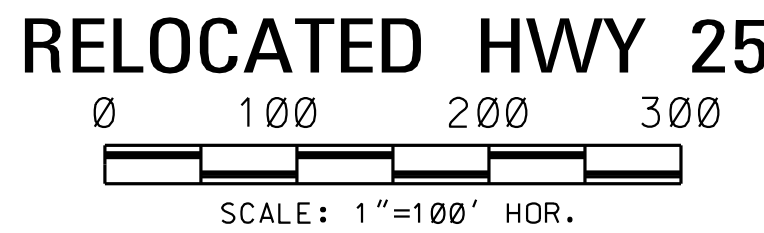
STATE	PROJECT NO.
MISS.	STP-0040-01(023)V21
REVISIONS	
DATE	BY
8/5/15	DSP



B.O.P. CONST. 383 + 00

TEMPORARY EROSION CONTROL ITEMS	UNITS	SYMBOL	TOTALS
SILT FENCE	L.F.	-SF-	
SUPER SILT FENCE	L.F.	-SSF-	
WATTLES, 12"	L.F.		
WATTLES, 20"	L.F.		
TRIANGULAR SILT DIKE	L.F.		
SANDBAGS	L.F.		
RIPRAP	TON		
EROSION CHECKS	BALE		
TYPE D SILT BASINS	EACH		

406 + 00 RELOCATED HWY 25 =
20 + 00 CONNECTOR ROAD



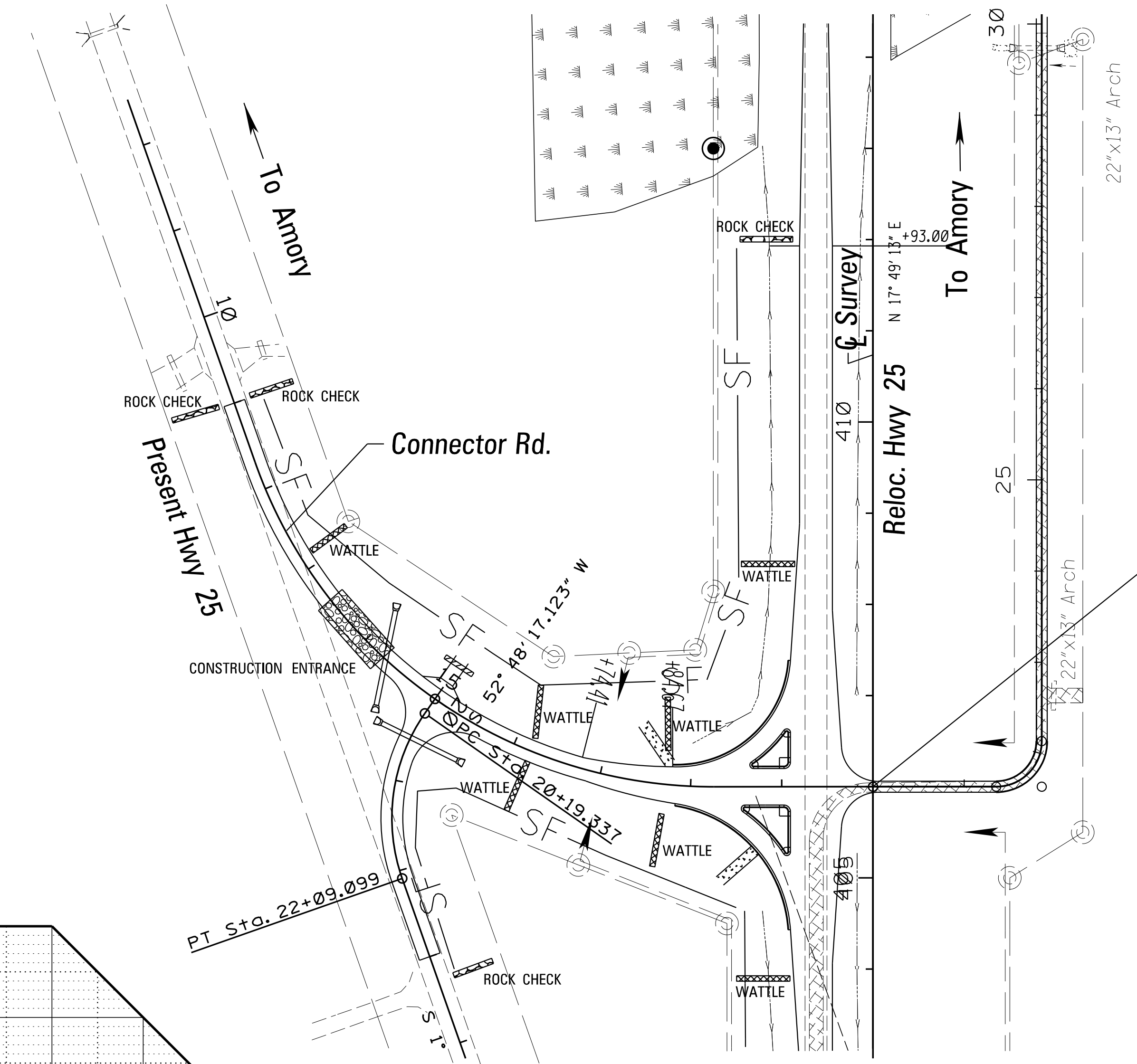
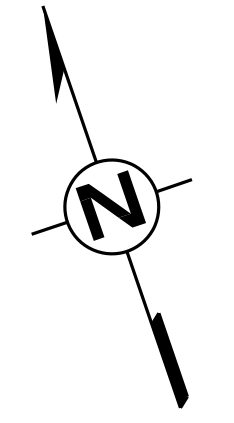
8/5/2015 1:23:52 PM03_SHT_ECP3.DGN
 L. W. WATKINS
 ROADWAY DESIGN DIVISION
 MISSISSIPPI DEPARTMENT OF TRANSPORTATION

Wk. Sh.
ECP3
Sh. No.
39

ADDENDUM

STATE	PROJECT NO.
MISS.	STP-0040-01(023)V21
REVISIONS	
DATE	BY
8/5/15	DSP

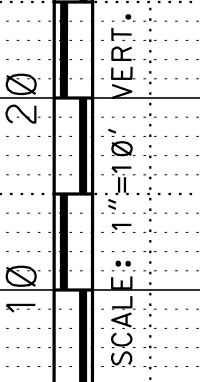
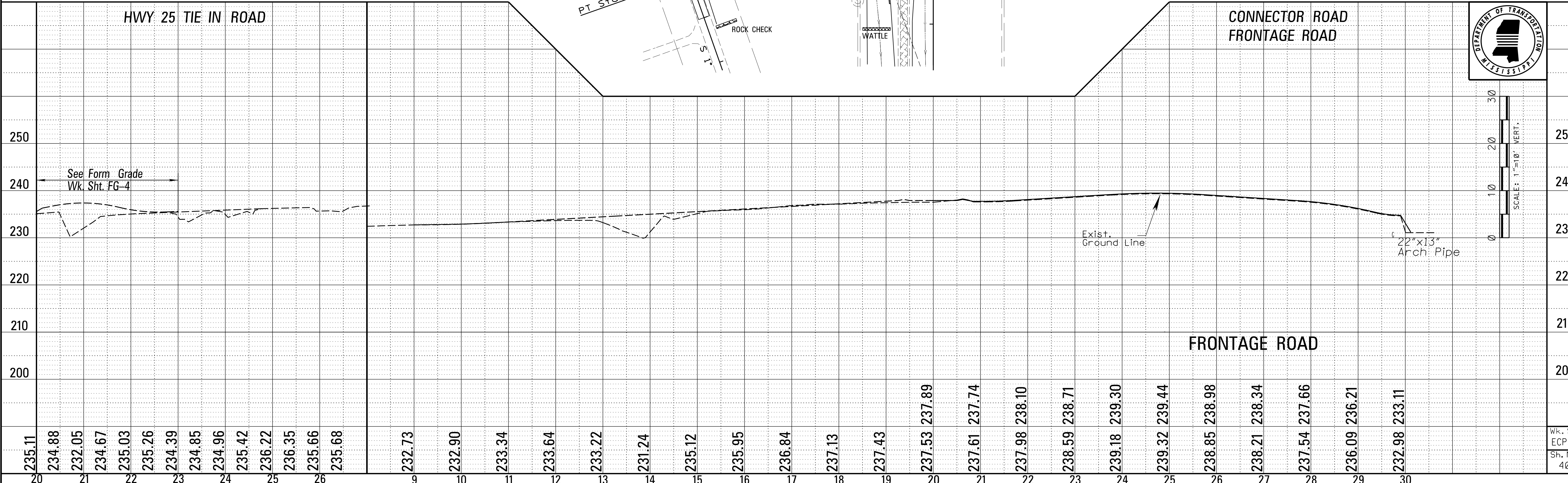
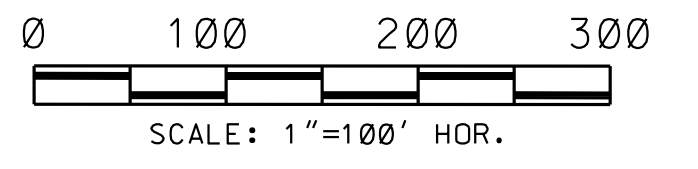
△ ADDED EROSION CONTROL PLAN TO SHEET



TEMPORARY EROSION CONTROL ITEMS	UNITS	SYMBOL	TOTALS
SILT FENCE	L.F.	SF	
SUPER SILT FENCE	L.F.	SSF	
WATTLES, 12"	L.F.		
WATTLES, 20"	L.F.		
TRIANGULAR SILT DIKE	L.F.		
SANDBAGS	L.F.		
RIPRAP	TON		
EROSION CHECKS	BALE		
TYPE D SILT BASINS	EACH		

406 + 00 RELOCATED HWY 25 =
20 + 00 CONNECTOR ROAD

CONNECTOR ROAD



L. L. BRYANT
ROADWAY DESIGN DIVISION
MISSISSIPPI DEPARTMENT OF TRANSPORTATION

8/5/2015 1:24:46:51 PPM0 SHT ECP3a.DGN

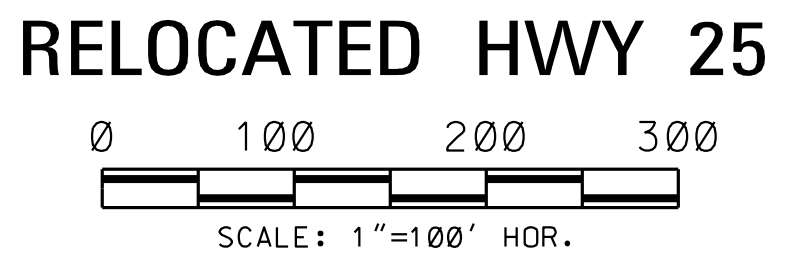
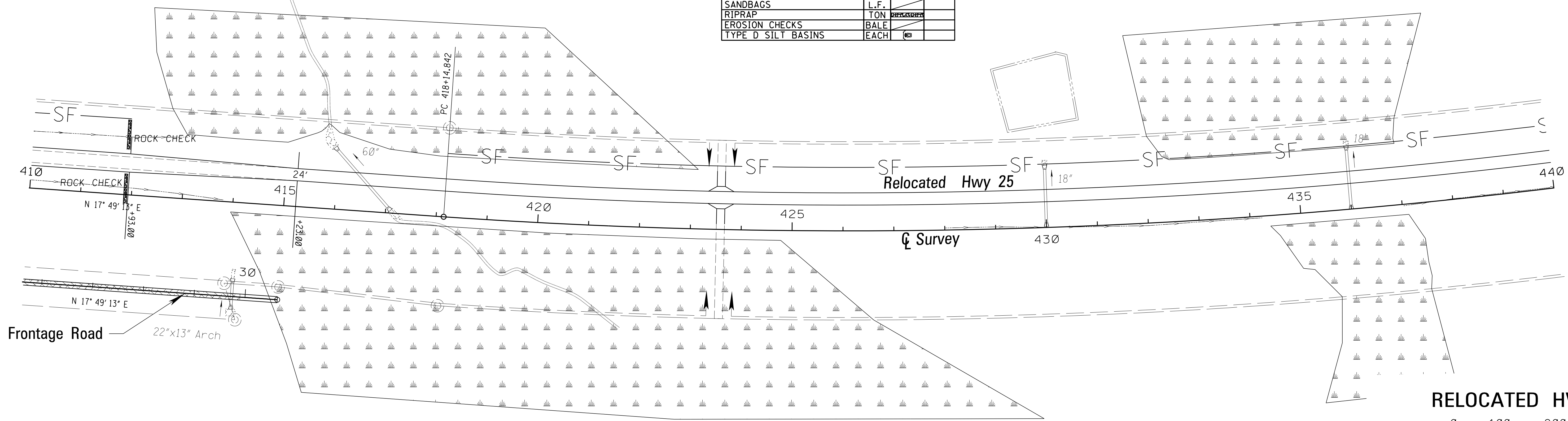
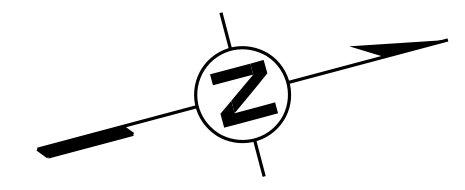
ADDENDUM

TEMPORARY EROSION CONTROL ITEMS	UNITS	SYMBOL	TOTALS
SILT FENCE	L.F.	-SF-	
SUPER SILT FENCE	L.F.	-SSF-	
WATTLES, 12"	L.F.		
WATTLES, 20"	L.F.		
TRIANGULAR SILT DIKE	L.F.		
SANDBAGS	L.F.		
RIPRAP	TON		
EROSION CHECKS	BALE		
TYPE D SILT BASINS	EACH		

▲ ADDED EROSION CONTROL PLAN TO SHEET

STATE	PROJECT NO.
MISS.	STP-0040-01(023)V21

REVISIONS		
DATE	BY	
8/5/15	DSP	▲



8/5/2015 1:21:54:53 PPM1 SHI ECP4.DGN
 ROADWAY DESIGN DIVISION
 MISSISSIPPI DEPARTMENT OF TRANSPORTATION

		RELOCATED HWY 25																																																								
260																																										260																
250																																										250																
240																																										240																
230																																										230																
220																																										220																
210																																										210																
200																																										200																
190																																										190																
		237.28	237.33	237.38	237.43	237.48	237.53	237.58	238.63	237.63	238.68	237.68	238.73	237.73	238.78	237.78	238.83	237.83	238.88	237.88	238.93	237.93	238.98	237.98	239.03	238.03	239.08	238.08	239.13	238.13	239.18	238.18	239.23	238.23	239.28	238.28	239.33	238.33	239.38	238.38	239.43	238.43	239.48	238.48	239.53	238.53	239.58	238.58	239.63	238.63	239.68	238.68	239.73	238.73	239.78	238.78	239.83	
		410	411	412	413	414	415	416	417	418	419	420	421	422	423	424	425	426	427	428	429	430	431	432	433	434	435	436	437	438	439	440																										

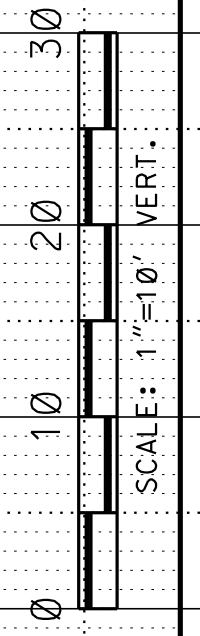
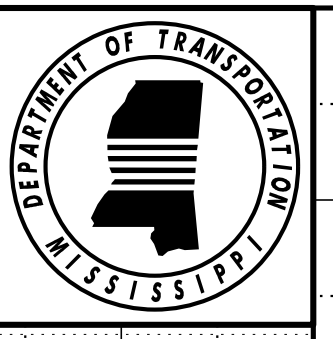
Exist. Ground Line

60" Pipe Lt. Lane

18" Pipe

18" Pipe

Exist. Ground Line



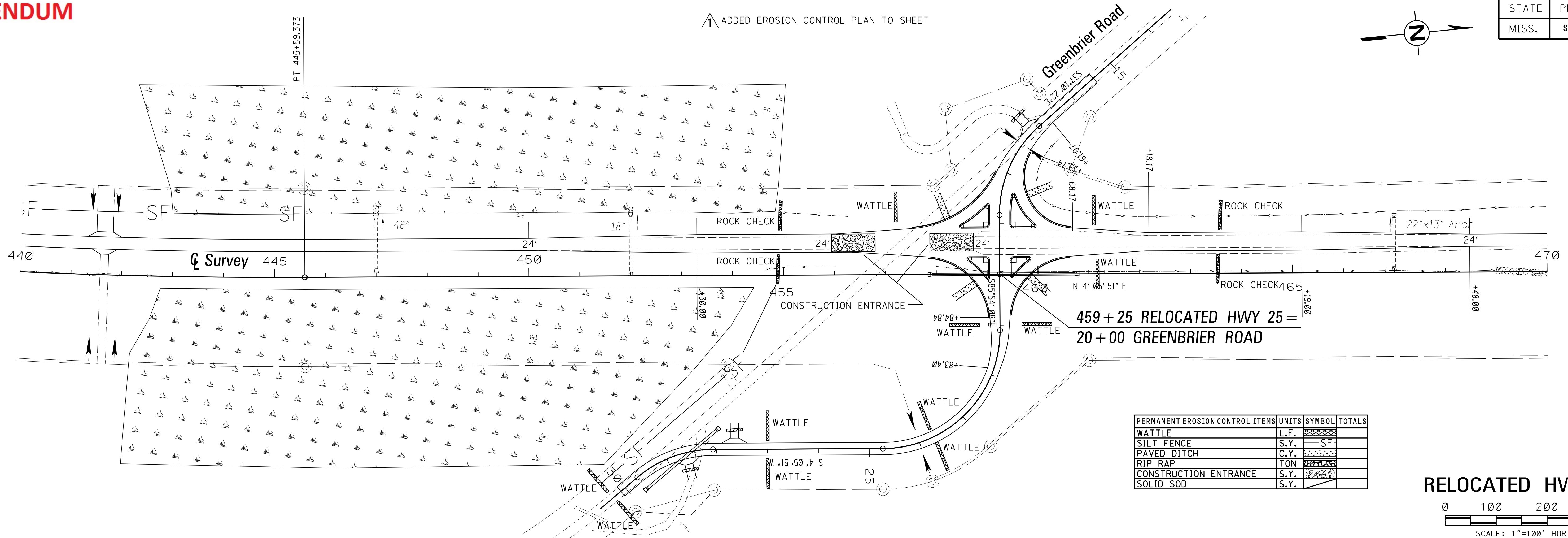
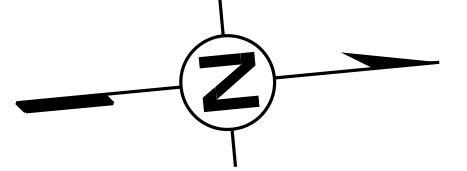
Wk. Sh.
 ECP4
 Sh. No.
 41

ADDENDUM

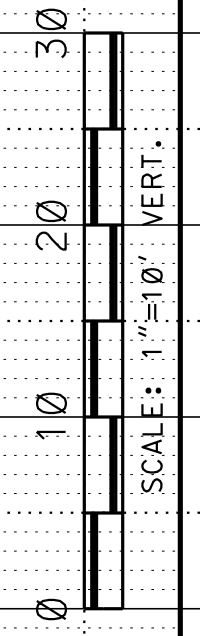
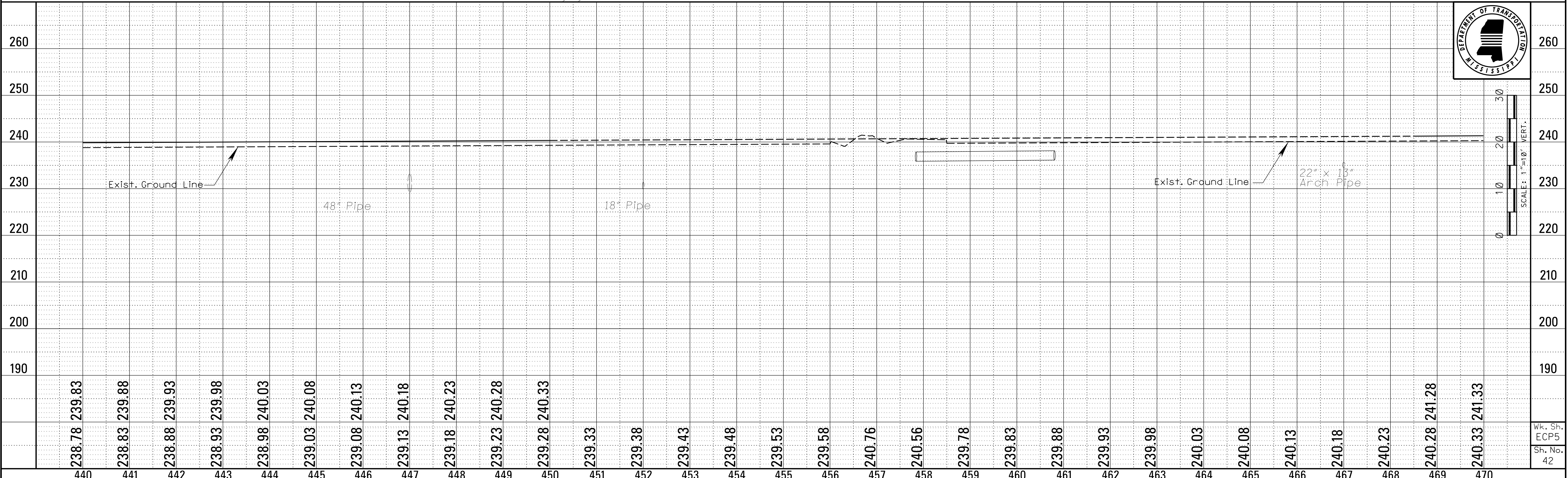
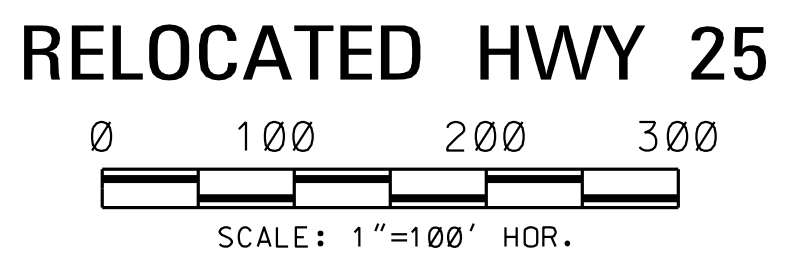
△ ADDED EROSION CONTROL PLAN TO SHEET

STATE	PROJECT NO.
MISS.	STP-0040-01(023)V21

REVISIONS	DATE	BY
△	8/5/15	DSP



PERMANENT EROSION CONTROL ITEMS	UNITS	SYMBOL	TOTALS
WATTLE	L.F.		
SILT FENCE	S.Y.		
PAVED DITCH	C.Y.		
RIP RAP	TON		
CONSTRUCTION ENTRANCE	S.Y.		
SOLID SOD	S.Y.		



8/5/2015 1:03:26 PM 042.SHT ECP5.DGN
 L. W. WATKINS
 ROADWAY DESIGN DIVISION
 MISSISSIPPI DEPARTMENT OF TRANSPORTATION

Wk. Sh.
 ECP5
 Sh. No.
 42

ADDENDUM

⚠️ ADDED EROSION CONTROL PLAN TO SHEET

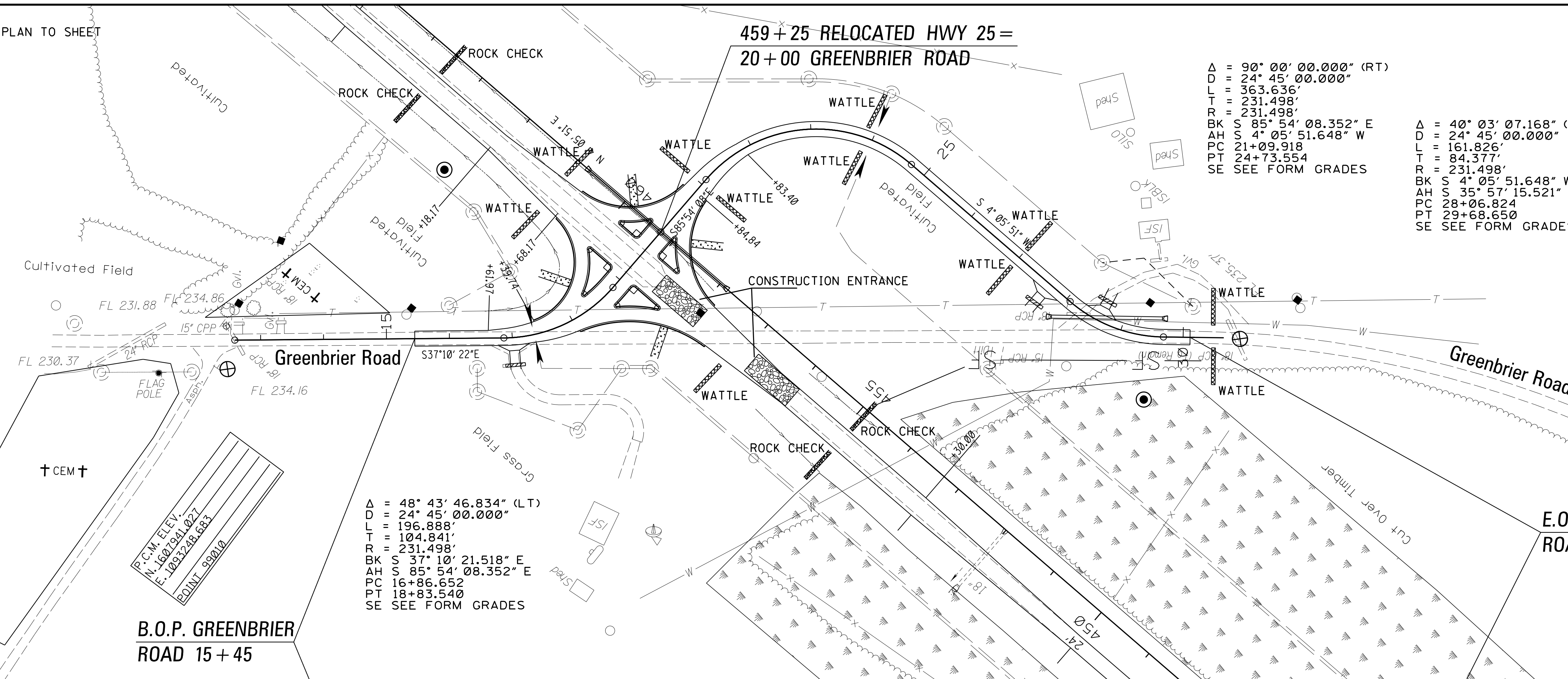
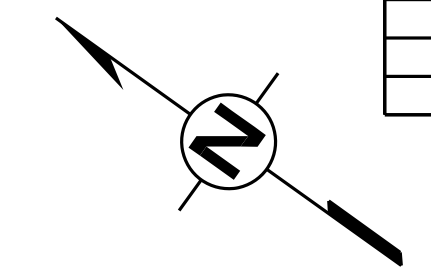
STATE	PROJECT NO.
MISS.	STP-0040-01(023)V21

REVISIONS	
DATE	BY
8/5/15	DSP

$\Delta = 90^\circ 00' 00.000''$ (RT)
 $D = 24^\circ 45' 00.000''$
 $L = 363.636'$
 $T = 231.498'$
 $R = 231.498'$
 $BK S 85^\circ 54' 08.352'' E$
 $AH S 4^\circ 05' 51.648'' W$
 $PC 21+09.918$
 $PT 24+73.554$
 SE SEE FORM GRADES

$\Delta = 40^\circ 03' 07.168''$ (LT)
 $D = 24^\circ 45' 00.000''$
 $L = 161.826'$
 $T = 84.377'$
 $R = 231.498'$
 $BK S 4^\circ 05' 51.648'' W$
 $AH S 35^\circ 57' 15.521'' E$
 $PC 28+06.824$
 $PT 29+68.650$
 SE SEE FORM GRADES

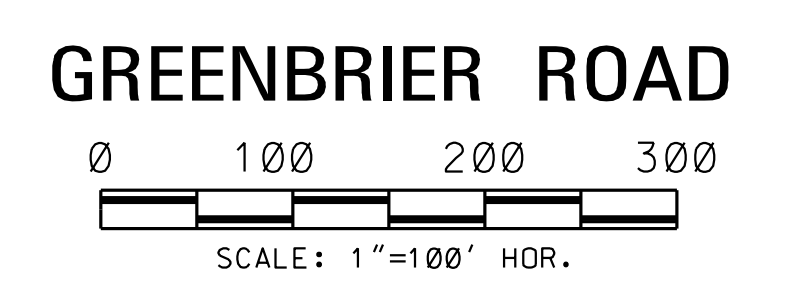
TEMPORARY EROSION CONTROL ITEMS	UNITS	SYMBOL	TOTALS
SILT FENCE	L.F.	-SF-	
SUPER SILT FENCE	L.F.	-SSF-	
WATTLES, 12"	L.F.		
WATTLES, 20"	L.F.		
TRIANGULAR SILT DIKE	L.F.		
SANDBAGS	L.F.		
RIPRAP	TON		
EROSION CHECKS	BALE		
TYPE D SILT BASINS	EACH		



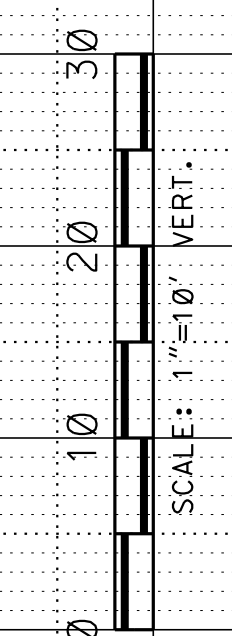
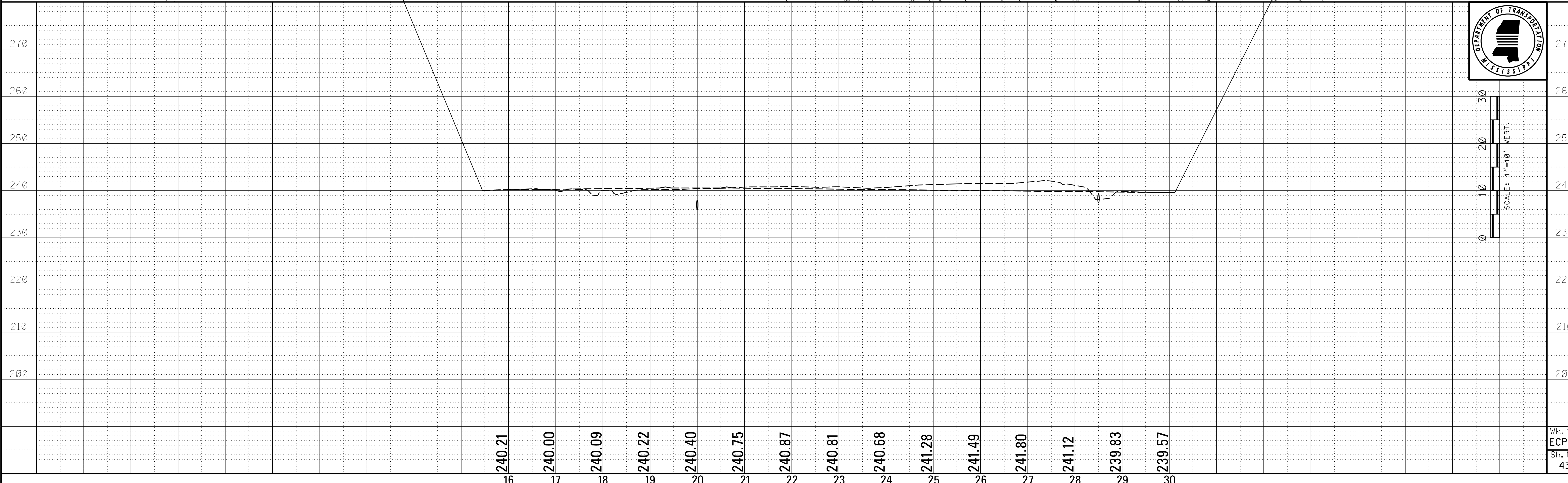
$\Delta = 48^\circ 43' 46.834''$ (LT)
 $D = 24^\circ 45' 00.000''$
 $L = 196.888'$
 $T = 104.841'$
 $R = 231.498'$
 $BK S 37^\circ 10' 21.518'' E$
 $AH S 85^\circ 54' 08.352'' E$
 $PC 16+86.652$
 $PT 18+83.540$
 SE SEE FORM GRADES

B.O.P. GREENBRIER ROAD 15 + 45
 † CEM †
 R.C.M. ELEV. N. 1601241.027
 E. 1032728.683
 POINT 099010

E.O.P. GREENBRIER ROAD 30 + 11



8/5/2015 1:16:45 PM 043 SHI ECP5a.DGN
 ROADWAY DESIGN DIVISION
 MISSISSIPPI DEPARTMENT OF TRANSPORTATION

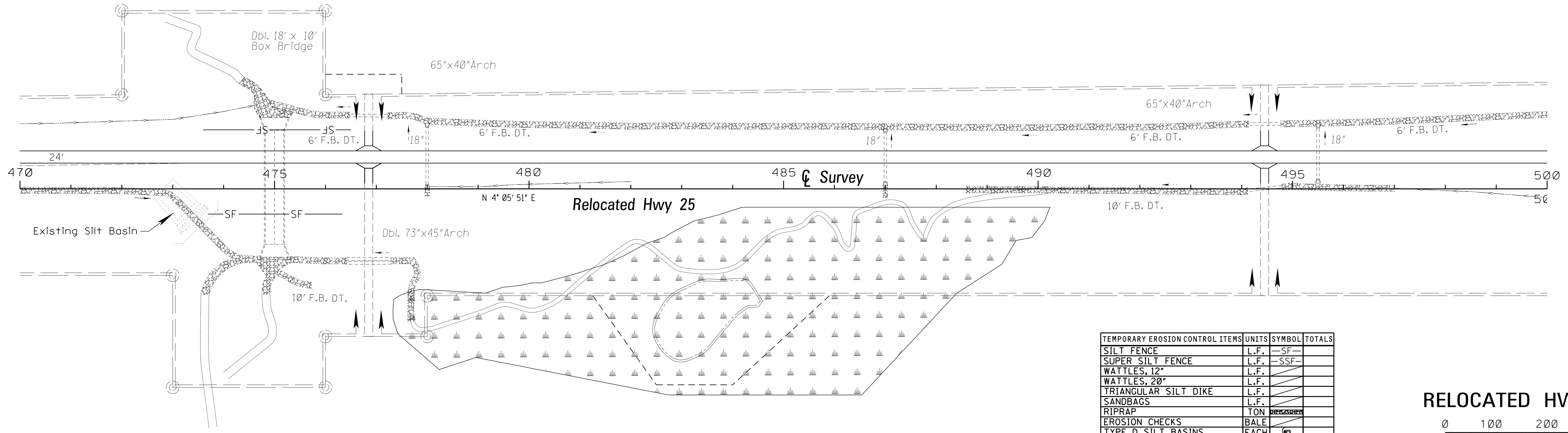


ADDENDUM

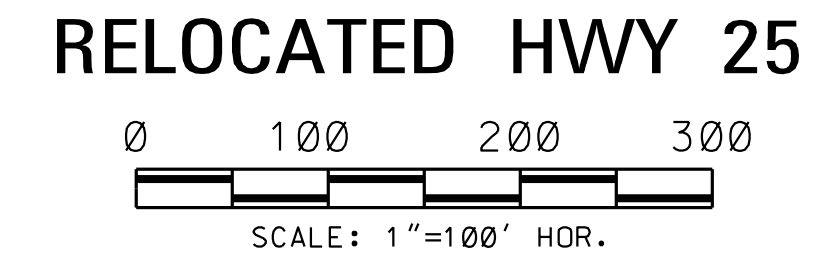
▲ ADDED EROSION CONTROL PLAN TO SHEET

STATE	PROJECT NO.
MISS.	STP-0040-01(023)V21

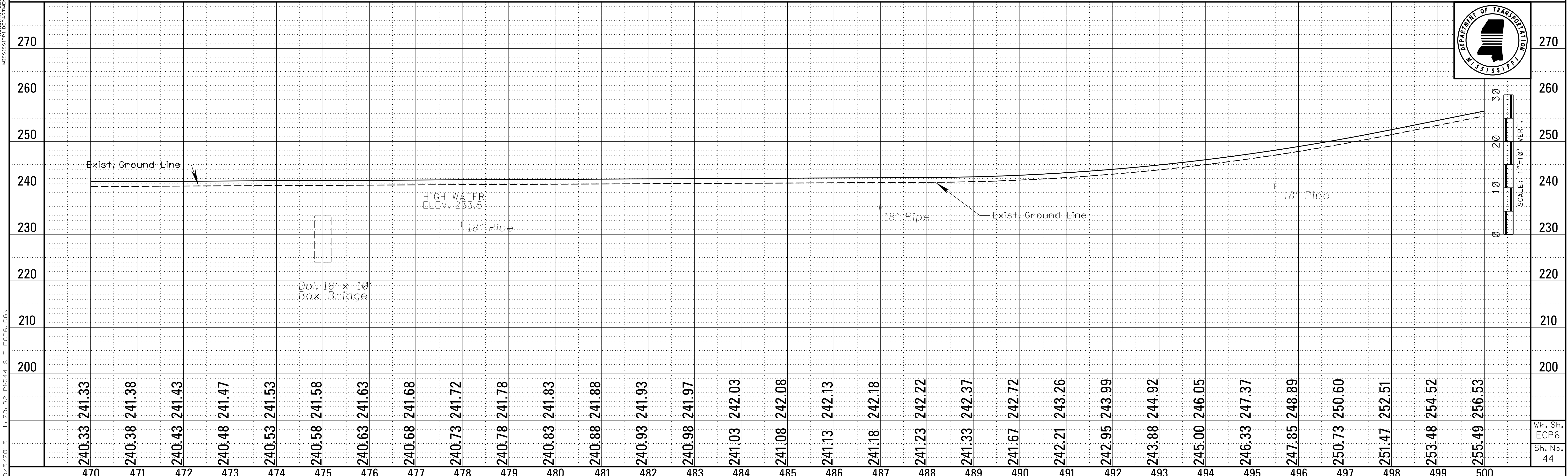
REVISIONS		
DATE	BY	
8/5/15	DSP	▲



TEMPORARY EROSION CONTROL ITEMS	UNITS	SYMBOL	TOTALS
SILT FENCE	L.F.	SF	
SUPER SILT FENCE	L.F.	SSF	
WATTLES, 12"	L.F.		
WATTLES, 20"	L.F.		
TRIANGULAR SILT DIKE	L.F.		
SANDBAGS	L.F.		
RIPRAP	TON		
EROSION CHECKS	BALE		
TYPE D SILT BASINS	EACH		



L. L. WATKINS ROADWAY DESIGN DIVISION MISSISSIPPI DEPARTMENT OF TRANSPORTATION



Wk. Sh. ECP6
Sh. No. 44

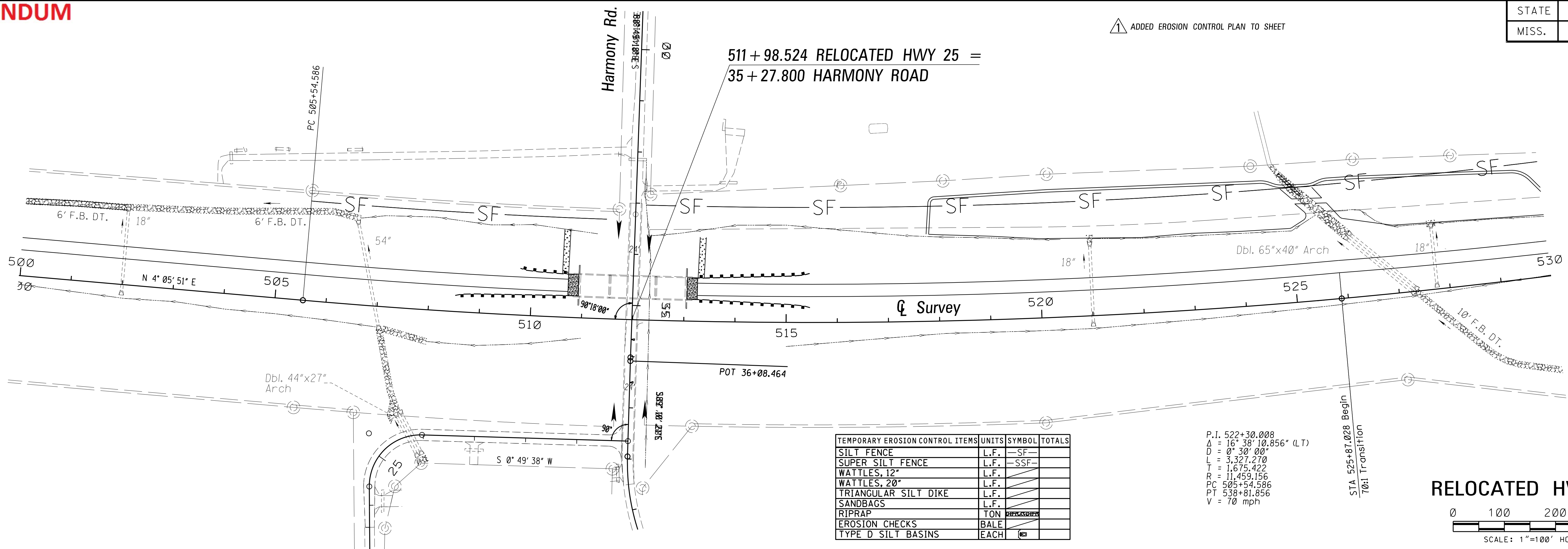
ADDENDUM

STATE	PROJECT NO.
MISS.	STP-0040-01(023)V21

REVISIONS	DATE	BY
Δ	6/8/15	DSP

▲ ADDED EROSION CONTROL PLAN TO SHEET

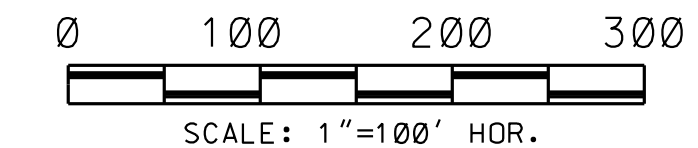
511 + 98.524 RELOCATED HWY 25 =
35 + 27.800 HARMONY ROAD



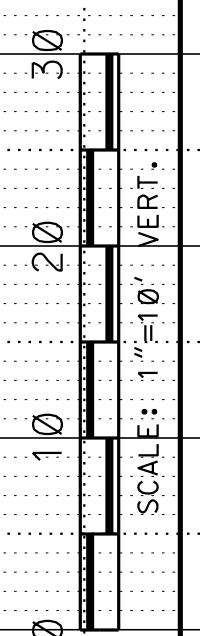
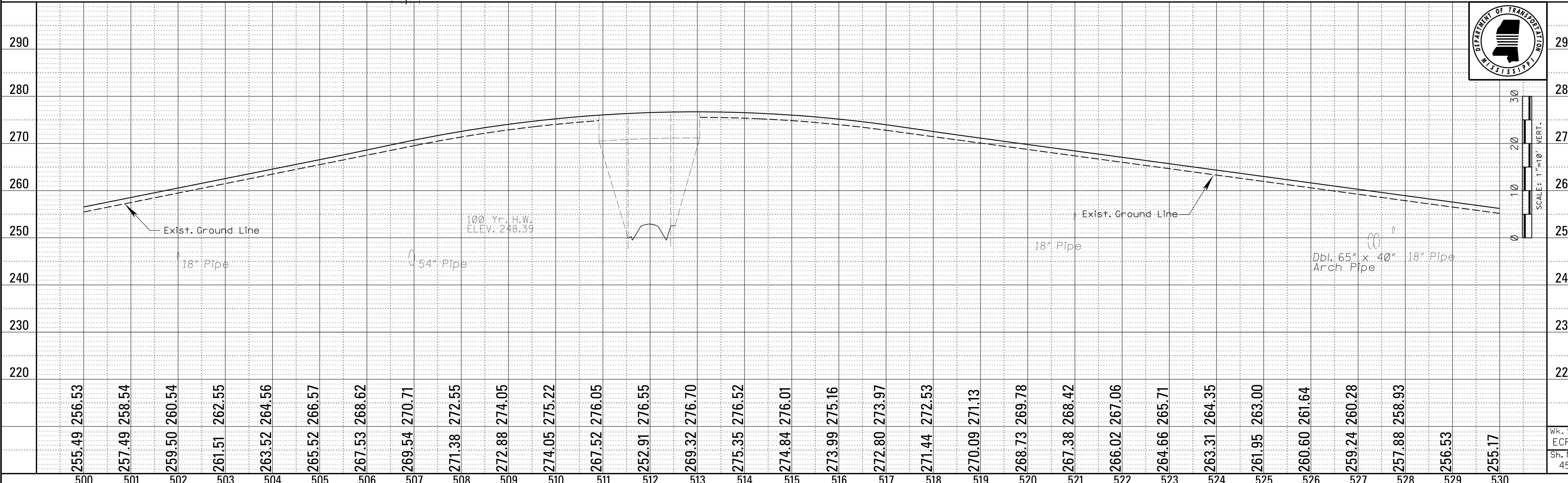
TEMPORARY EROSION CONTROL ITEMS	UNITS	SYMBOL	TOTALS
SILT FENCE	L.F.	-SF-	
SUPER SILT FENCE	L.F.	-SSF-	
WATTLES, 12"	L.F.		
WATTLES, 20"	L.F.		
TRIANGULAR SILT DIKE	L.F.		
SANDBAGS	L.F.		
RIPRAP	TON		
EROSION CHECKS	BALE		
TYPE D SILT BASINS	EACH		

P.I. 522+30.008
 $\Delta = 16^{\circ} 38' 10.856''$ (LT)
 $D = 0^{\circ} 30' 00''$
 $L = 3,327.270$
 $T = 1,675.422$
 $R = 11,459.156$
 $PC = 505+54.586$
 $PT = 538+81.856$
 $V = 70$ mph

RELOCATED HWY 25



L.A. WRENKLE
ROADWAY DESIGN DIVISION
MISSISSIPPI DEPARTMENT OF TRANSPORTATION



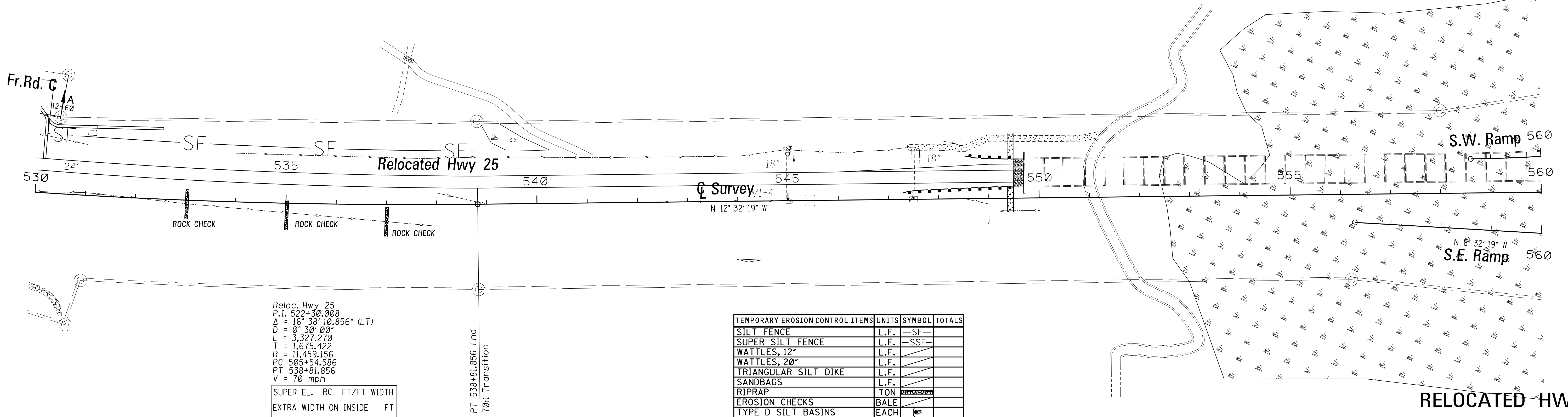
wk. Sh.
ECP7
Sh. No.
45

ADDENDUM

▲ ADDED EROSION CONTROL PLAN TO SHEET

STATE	PROJECT NO.
MISS.	STP-0040-01(023)V21

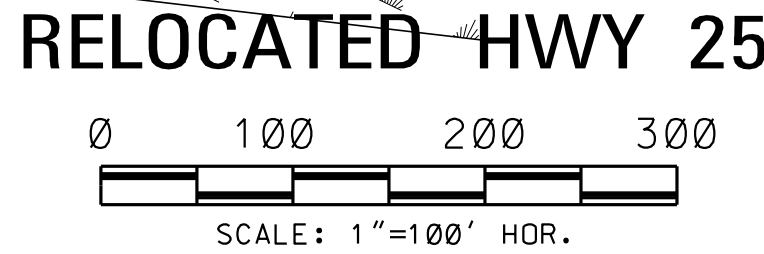
REVISIONS	
DATE	BY
8/5/15	DSP



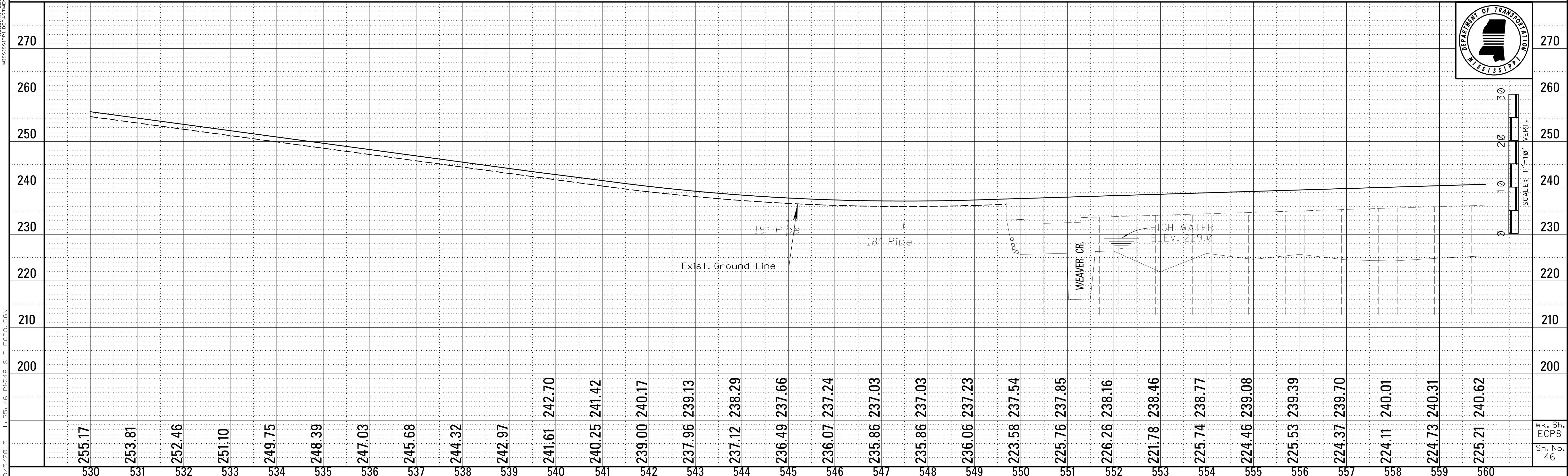
Reloc. Hwy 25
 P.I. 522+30.008
 $\Delta = 16^\circ 38' 10.856''$ (LT)
 $D = 0^\circ 30' 00''$
 $L = 3,327.270'$
 $T = 1,675.422'$
 $R = 11,459.156'$
 $PC = 505+54.586$
 $PT = 538+81.856$
 $V = 70$ mph

SUPER EL.	RC	FT/FT WIDTH
EXTRA WIDTH ON INSIDE	FT	
SEE DWG.	CASE	

TEMPORARY EROSION CONTROL ITEMS	UNITS	SYMBOL	TOTALS
SILT FENCE	L.F.	SF	
SUPER SILT FENCE	L.F.	SSF	
WATTLES, 12"	L.F.		
WATTLES, 20"	L.F.		
TRIANGULAR SILT DIKE	L.F.		
SANDBAGS	L.F.		
RIPRAP	TON		
EROSION CHECKS	BALE		
TYPE D SILT BASINS	EACH		



L. L. BENTLEY ROADWAY DESIGN DIVISION MISSISSIPPI DEPARTMENT OF TRANSPORTATION



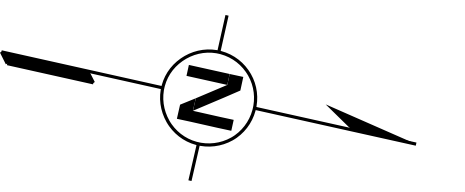
8/5/2015 1:35:46 PM 046_SHT_ECP8.DGN

Wk. Sh. ECP8
 Sh. No. 46

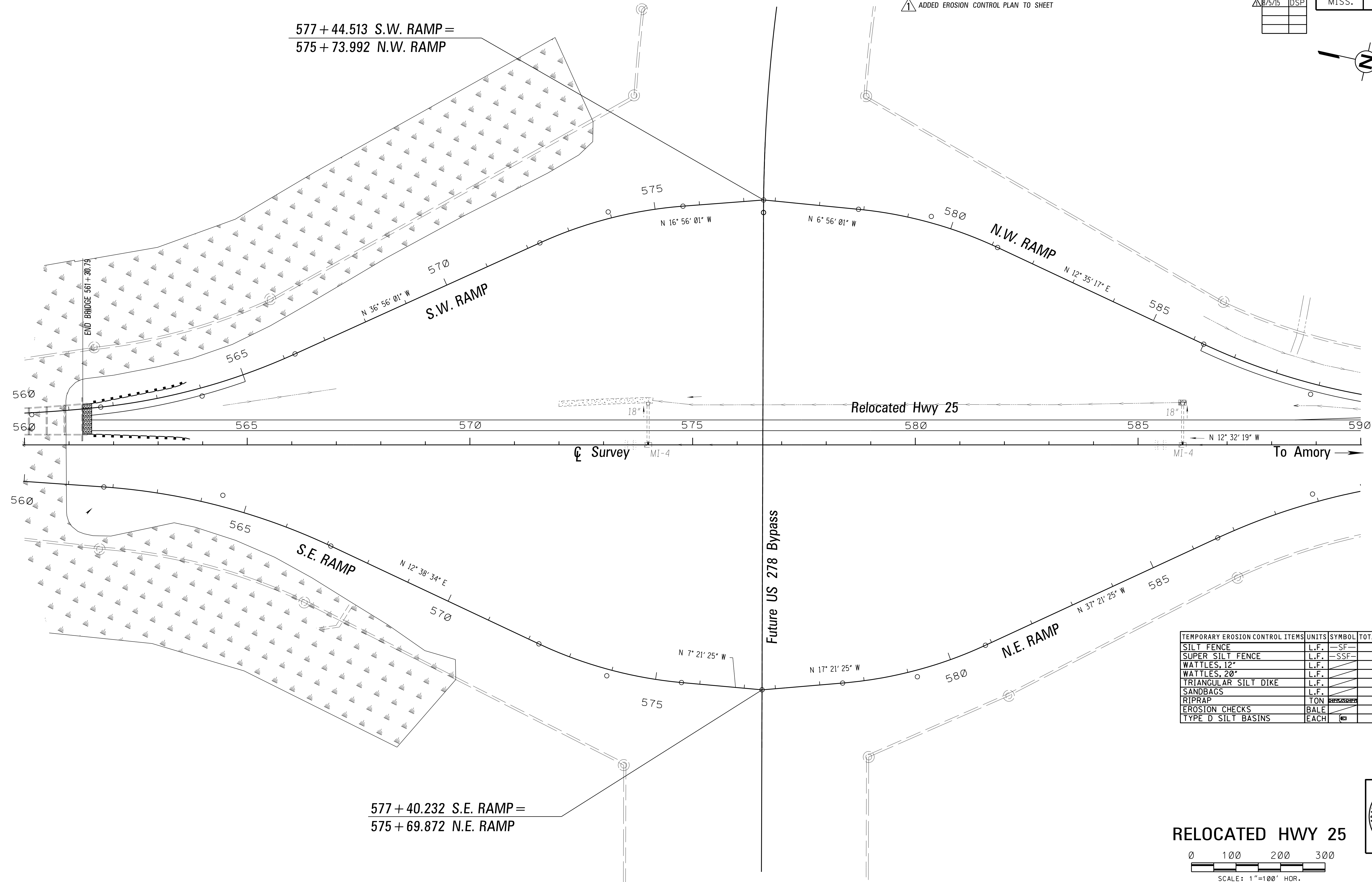
REVISIONS		
DATE	BY	
8/5/15	DSP	

STATE	PROJECT NO.
MISS.	STP-0040-01(023)V21

▲ ADDED EROSION CONTROL PLAN TO SHEET



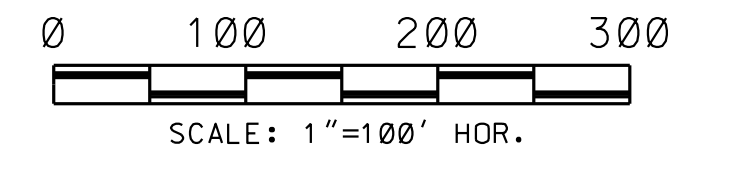
577 + 44.513 S.W. RAMP =
575 + 73.992 N.W. RAMP



577 + 40.232 S.E. RAMP =
575 + 69.872 N.E. RAMP

TEMPORARY EROSION CONTROL ITEMS	UNITS	SYMBOL	TOTALS
SILT FENCE	L.F.	SF	
SUPER SILT FENCE	L.F.	SSF	
WATTLES, 12"	L.F.		
WATTLES, 20"	L.F.		
TRIANGULAR SILT DIKE	L.F.		
SANDBAGS	L.F.		
RIPRAP	TON		
EROSION CHECKS	BALE		
TYPE D SILT BASINS	EACH		

RELOCATED HWY 25



wk. Sh.
ECP9
Sh. No.
47

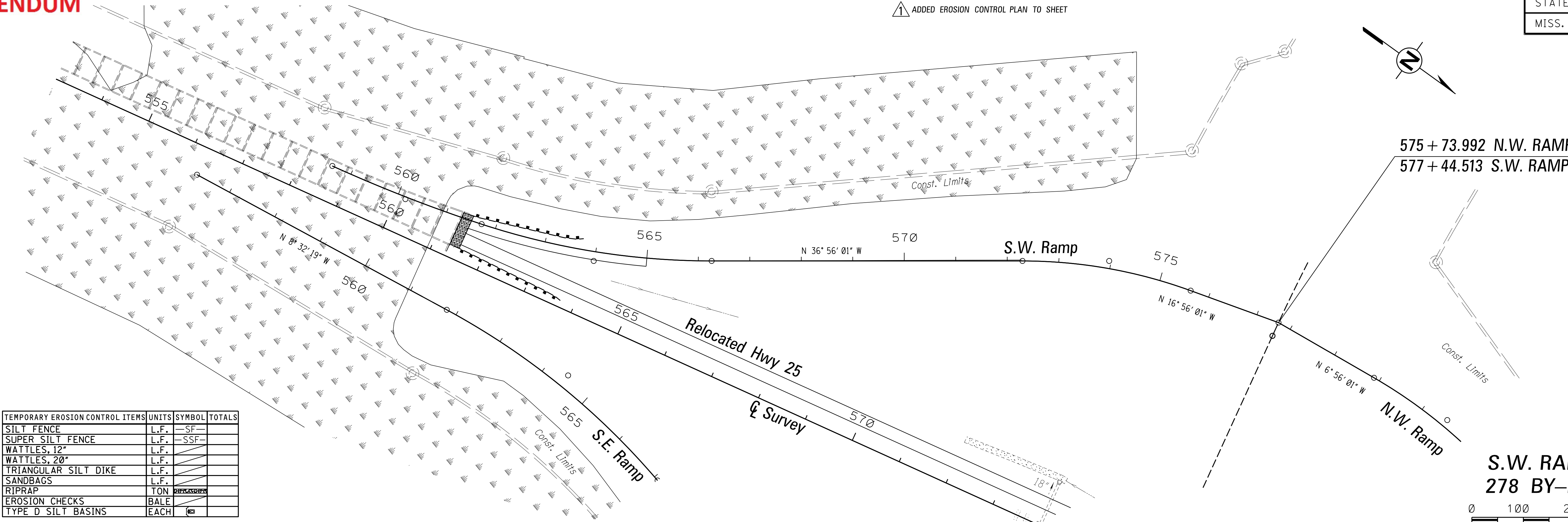
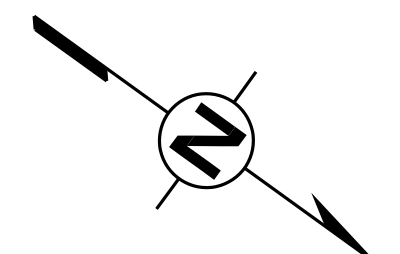
B:5/2015 1:39:21 PM047.SHT ECP9.dgn MISSISSIPPI DEPARTMENT OF TRANSPORTATION

ADDENDUM

▲ ADDED EROSION CONTROL PLAN TO SHEET

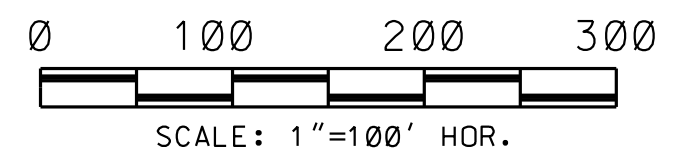
STATE	PROJECT NO.
MISS.	STP-0040-01(023)V21

REVISIONS	
DATE	BY
8/5/15	DSP



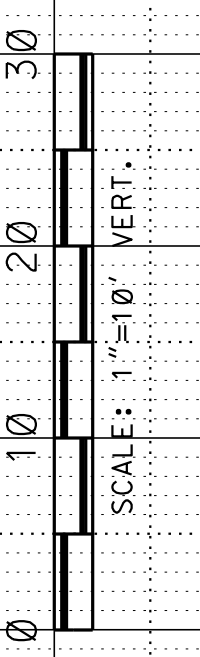
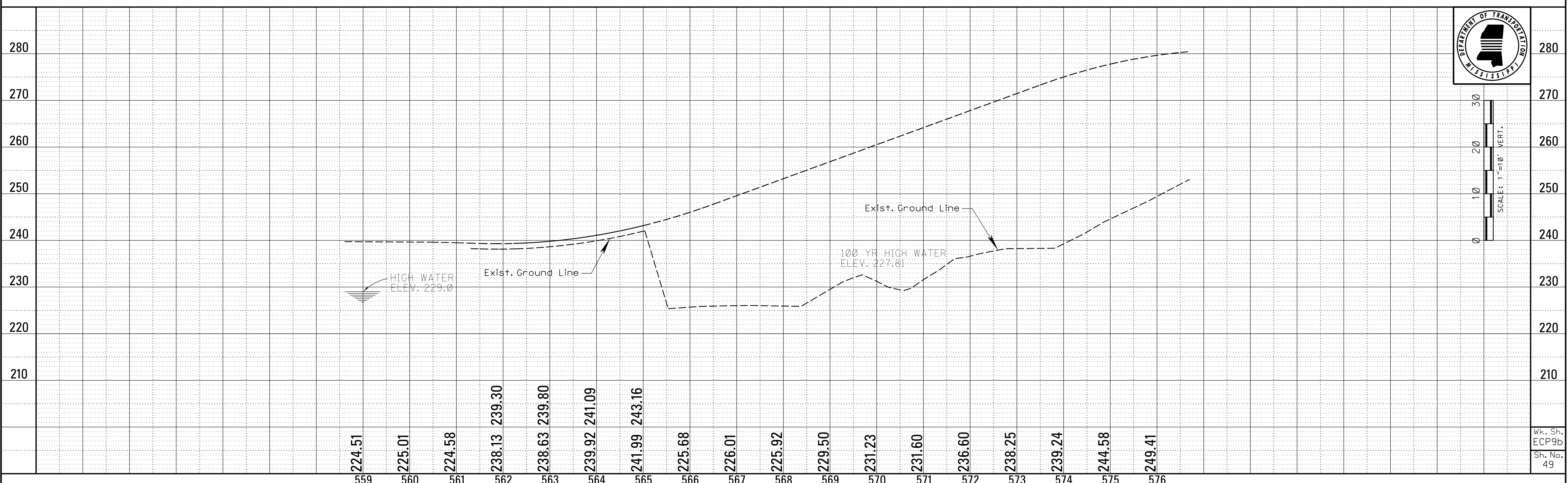
575 + 73.992 N.W. RAMP =
577 + 44.513 S.W. RAMP

**S.W. RAMP @
278 BY-PASS**



TEMPORARY EROSION CONTROL ITEMS	UNITS	SYMBOL	TOTALS
SILT FENCE	L.F.	-SF-	
SUPER SILT FENCE	L.F.	-SSF-	
WATTLES, 12"	L.F.		
WATTLES, 20"	L.F.		
TRIANGULAR SILT DIKE	L.F.		
SANDBAGS	L.F.		
RIPRAP	TON		
EROSION CHECKS	BALE		
TYPE D SILT BASINS	EACH		

8/5/2015 11:44:08 PM049.SHT ECP9B.DGN ROADWAY DESIGN DIVISION MISSISSIPPI DEPARTMENT OF TRANSPORTATION



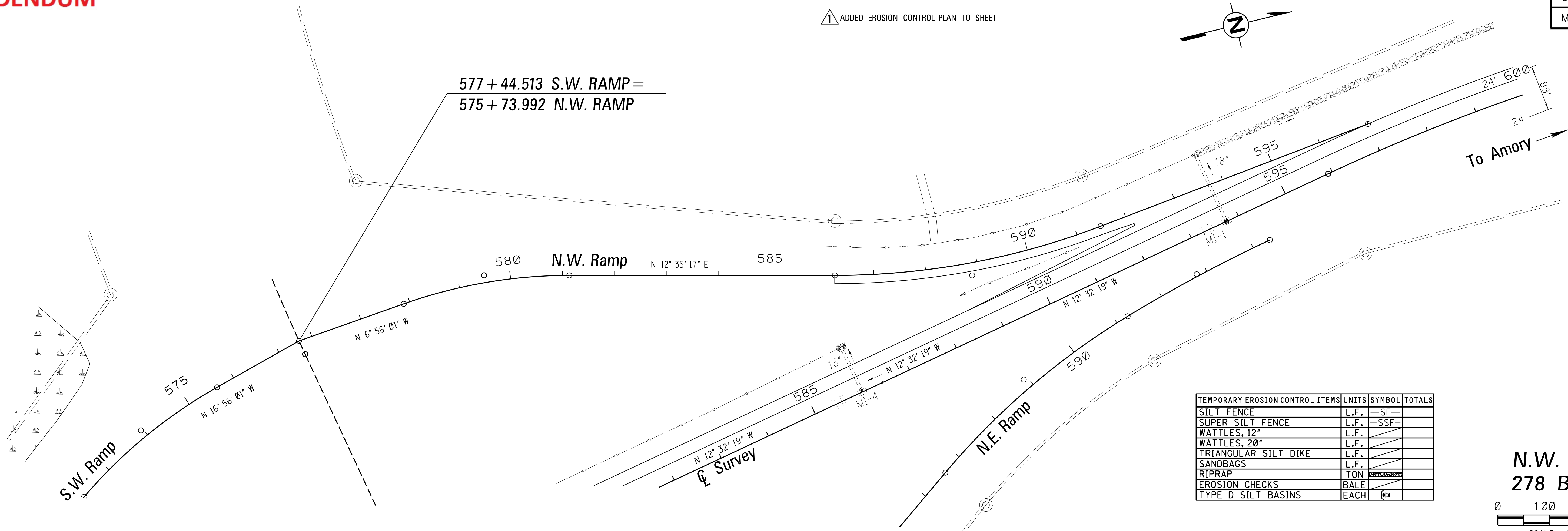
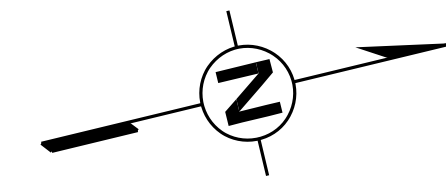
Wk. Sh.
ECP9b
Sh. No.
49

ADDENDUM

STATE	PROJECT NO.
MISS.	STP-0040-01(023)V21

REVISIONS	
DATE	BY
8/5/15	DSP

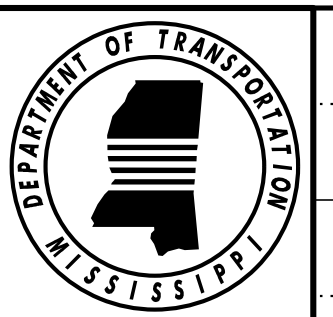
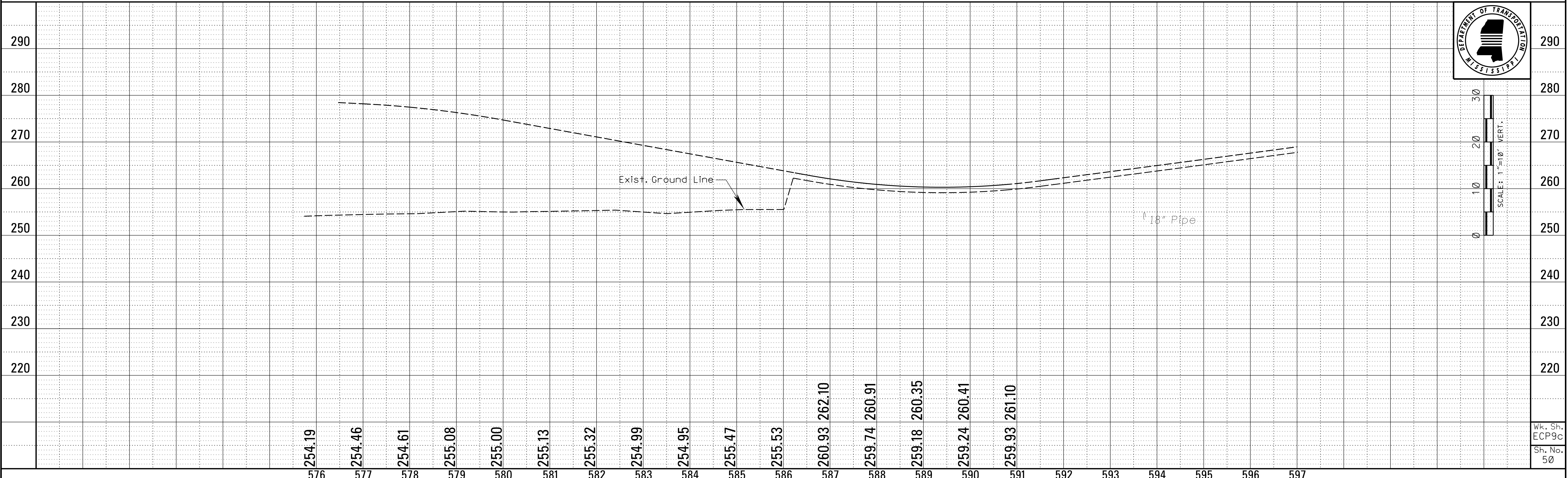
1 ADDED EROSION CONTROL PLAN TO SHEET



TEMPORARY EROSION CONTROL ITEMS	UNITS	SYMBOL	TOTALS
SILT FENCE	L.F.	-SF-	
SUPER SILT FENCE	L.F.	-SSF-	
WATTLES, 12"	L.F.		
WATTLES, 20"	L.F.		
TRIANGULAR SILT DIKE	L.F.		
SANDBAGS	L.F.		
RIPRAP	TON		
EROSION CHECKS	BALE		
TYPE D SILT BASINS	EACH		

**N.W. RAMP @
278 BY-PASS**

MISSISSIPPI DEPARTMENT OF TRANSPORTATION
 ROADWAY DESIGN DIVISION
 8/5/2015 11:47:26 PM050 SHI ECP9C.DGN



SCALE: 1"=10' VERT.

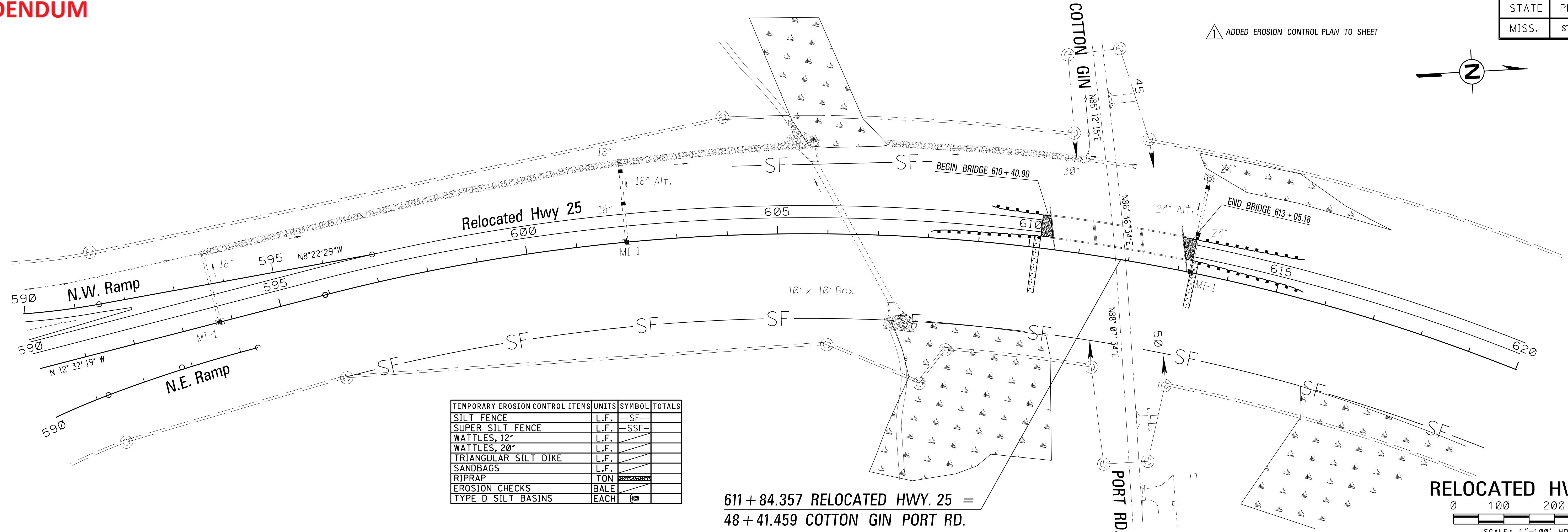
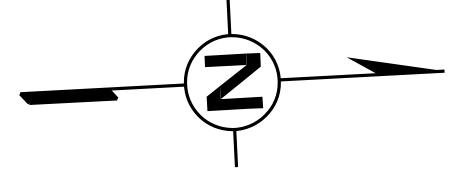
Wk. Sh. ECP9c
 Sh. No. 50

ADDENDUM

STATE	PROJECT NO.
MISS.	STP-0040-01(023)V21

REVISIONS	DATE	BY
Δ	8/5/15	DSP

ADDED EROSION CONTROL PLAN TO SHEET

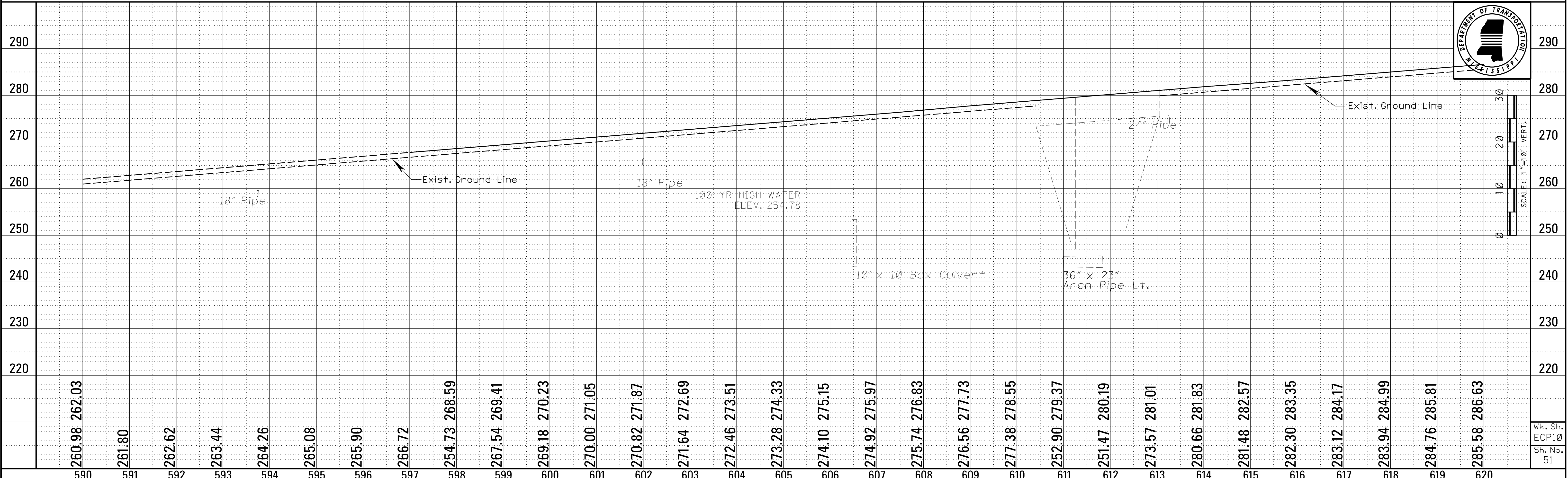


TEMPORARY EROSION CONTROL ITEMS	UNITS	SYMBOL	TOTALS
SILT FENCE	L.F.	SF	
SUPER SILT FENCE	L.F.	SSF	
WATTLES, 12"	L.F.		
WATTLES, 20"	L.F.		
TRIANGULAR SILT DIKE	L.F.		
SANDBAGS	L.F.		
RIPRAP	TON		
EROSION CHECKS	BALE		
TYPE D SILT BASINS	EACH		

611 + 84.357 RELOCATED HWY. 25 =
48 + 41.459 COTTON GIN PORT RD.

RELOCATED HWY 25
0 100 200 300
SCALE: 1"=100' HOR.

8/5/2015 1:52:12 PM 051_SHT_ECP10.DGN ROADWAY DESIGN DIVISION MISSISSIPPI DEPARTMENT OF TRANSPORTATION



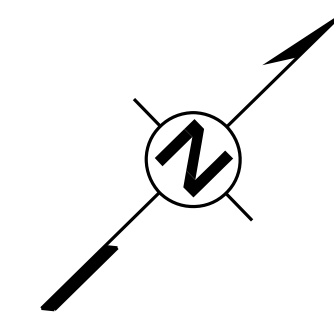
SCALE: 1"=10' VERT.

ADDENDUM

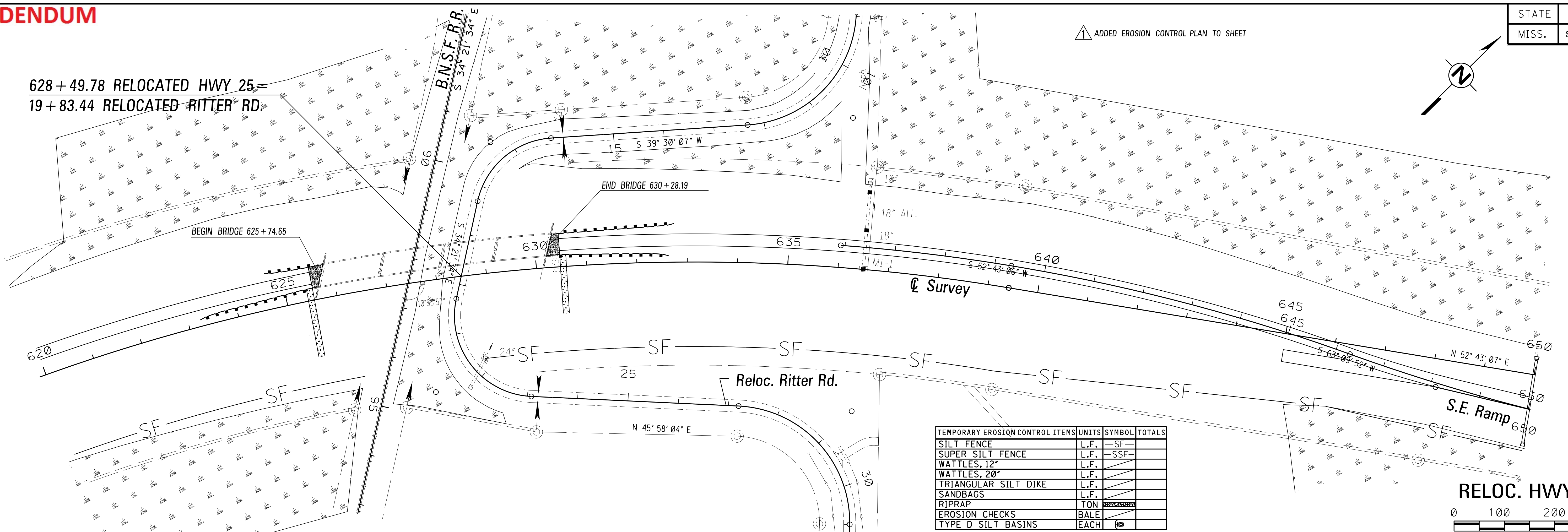
STATE	PROJECT NO.
MISS.	STP-0040-01(023)V21

REVISIONS	DATE	BY
Δ	8/5/15	DSP

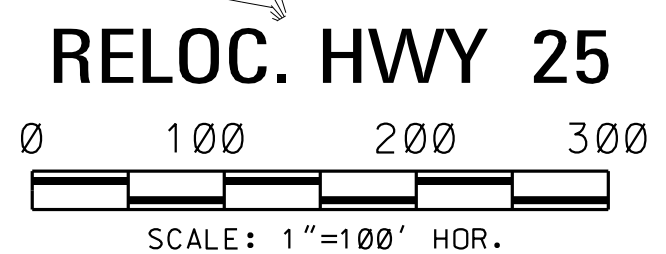
△ ADDED EROSION CONTROL PLAN TO SHEET



628 + 49.78 RELOCATED HWY 25
19 + 83.44 RELOCATED RITTER RD.

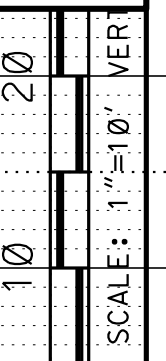
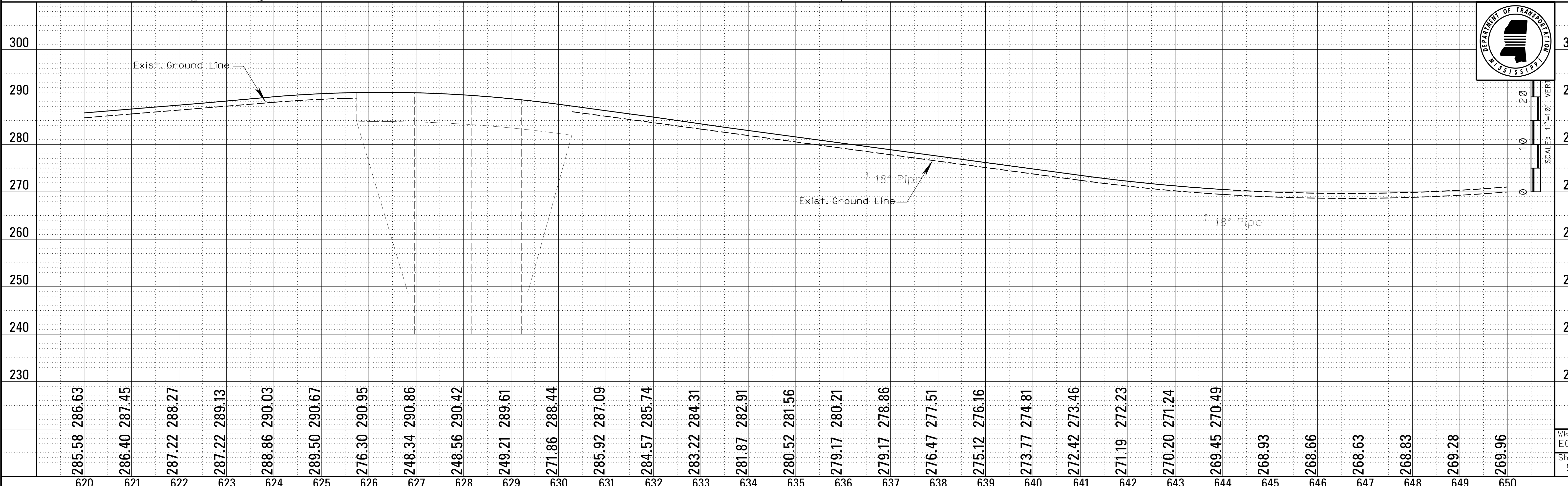


TEMPORARY EROSION CONTROL ITEMS	UNITS	SYMBOL	TOTALS
SILT FENCE	L.F.	-SF-	
SUPER SILT FENCE	L.F.	-SSF-	
WATTLES, 12"	L.F.		
WATTLES, 20"	L.F.		
TRIANGULAR SILT DIKE	L.F.		
SANDBAGS	L.F.		
RIPRAP	TON	□□□□□□□□	
EROSION CHECKS	BALE		
TYPE D SILT BASINS	EACH	□	



RELOC. HWY 25

8/5/2015 1:56:01 PM 052_SHT_ECP11.DGN ROADWAY DESIGN DIVISION MISSISSIPPI DEPARTMENT OF TRANSPORTATION

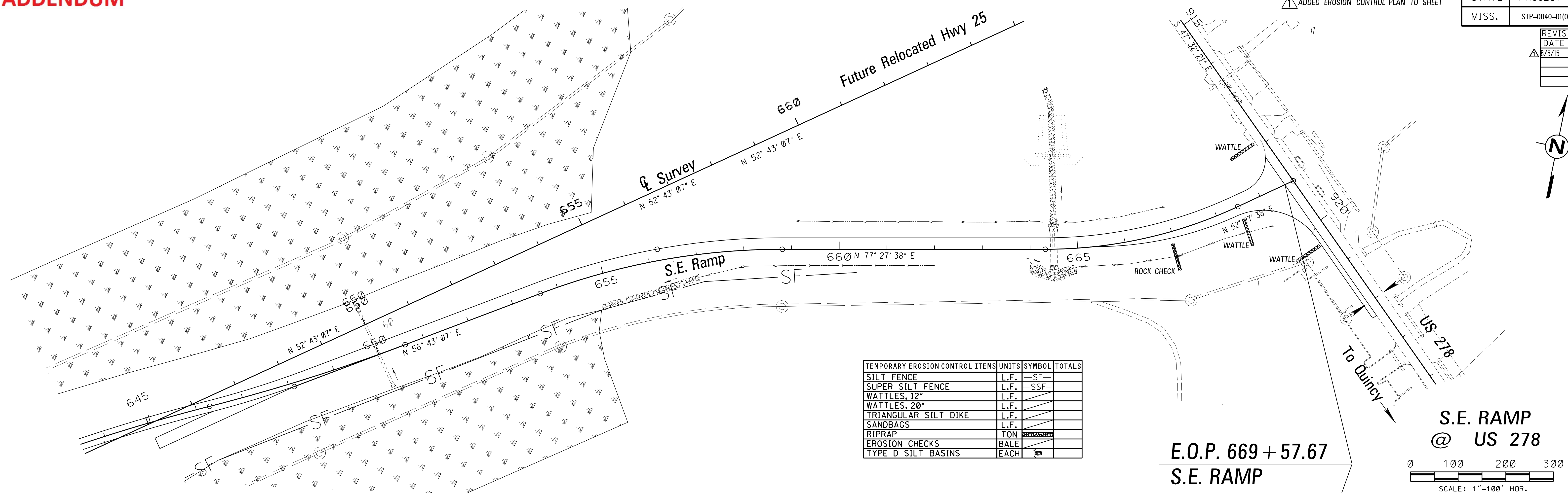


Wk. Sh. ECP11
Sh. No. 52

ADDENDUM

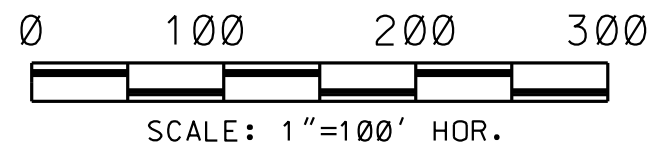
STATE	PROJECT NO.
MISS.	STP-0040-01(023)V21

REVISIONS	
DATE	BY
8/5/15	DSP

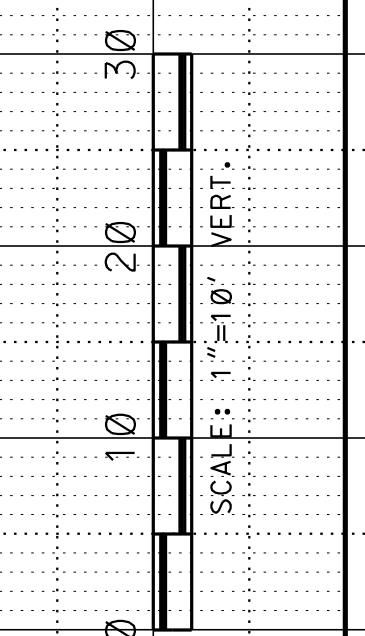
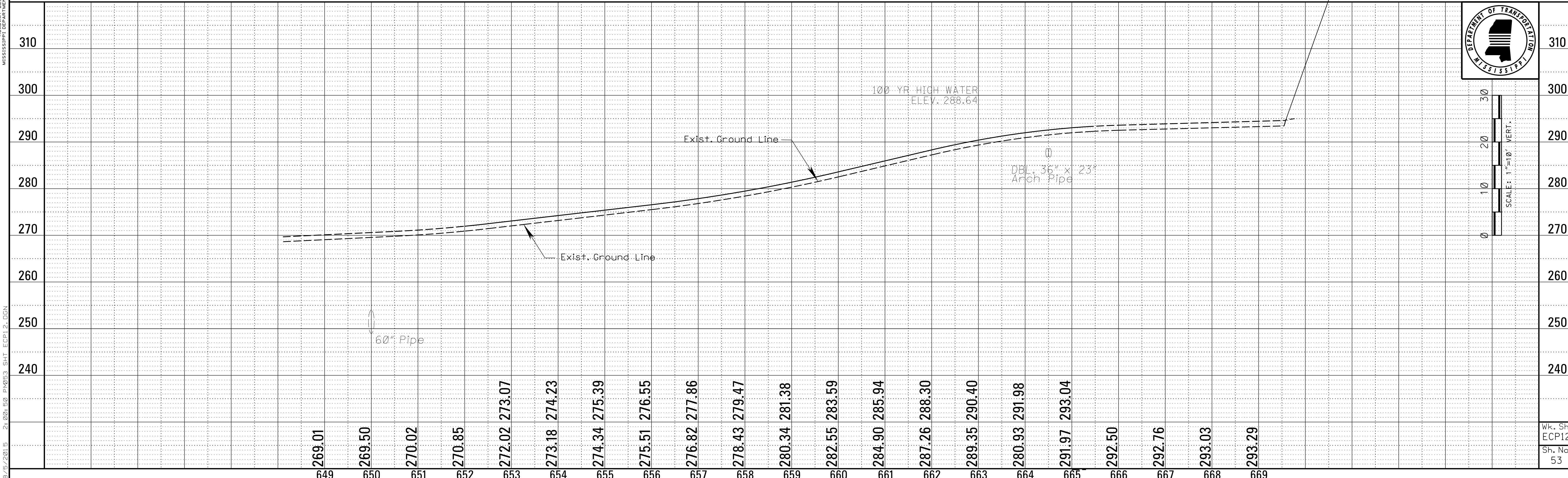


TEMPORARY EROSION CONTROL ITEMS	UNITS	SYMBOL	TOTALS
SILT FENCE	L.F.	-SF-	
SUPER SILT FENCE	L.F.	-SSF-	
WATTLES, 12"	L.F.		
WATTLES, 20"	L.F.		
TRIANGULAR SILT DIKE	L.F.		
SANDBAGS	L.F.		
RIPRAP	TON		
EROSION CHECKS	BALE		
TYPE D SILT BASINS	EACH		

E.O.P. 669 + 57.67
S.E. RAMP



L. L. WENDE ROADWAY DESIGN DIVISION MISSISSIPPI DEPARTMENT OF TRANSPORTATION



Wk. Sh. ECP12
Sh. No. 53