

**SECTION 905 -- PROPOSAL (CONTINUED)**

I (We) hereby certify by execution of the Section 905 proposal below, that all certifications, disclosures and affidavits incorporated herein are deemed to be duly executed in the aggregate, fully enforceable and binding upon delivery of the bid proposal. I (We) further acknowledge that this certification shall not extend to the bid bond or alternate security which must be separately executed for the benefit of the Commission. This signature does not cure deficiencies in any required certifications, disclosures and/or affidavits. I (We) also acknowledge the right of the Commission to require full and final execution on any certification, disclosure or affidavit contained in the proposal at the Commission's election upon award. Failure to so execute at the Commission's request within the time allowed in the Standard Specifications for execution of all contract documents will result in forfeiture of the bid bond or alternate security.

Bidder acknowledges receipt of and has added to and made a part of the proposal and contract documents the following addendum (addenda):

ADDENDUM NO.   1   DATED   8/18/2015   ADDENDUM NO.        DATED         
 ADDENDUM NO.   2   DATED   8/19/2015   ADDENDUM NO.        DATED       

Number	Description
1	Revised or Added Plan Sheet Nos. 2, 4, 39-47, 49-53; Amendment EBS Download Required.
2	Revised or Added Plan Sheet Nos. 2-3, 53.1; Amendment EBS Download Required.

TOTAL ADDENDA:   2    
 (Must agree with total addenda issued prior to opening of bids)

Respectfully Submitted,

DATE \_\_\_\_\_

\_\_\_\_\_  
 Contractor

BY \_\_\_\_\_  
 Signature

TITLE \_\_\_\_\_

ADDRESS \_\_\_\_\_

CITY, STATE, ZIP \_\_\_\_\_

PHONE \_\_\_\_\_

FAX \_\_\_\_\_

E-MAIL \_\_\_\_\_

(To be filled in if a corporation)

Our corporation is chartered under the Laws of the State of \_\_\_\_\_ and the names, titles and business addresses of the executives are as follows:

\_\_\_\_\_  
 President Address

\_\_\_\_\_  
 Secretary Address

\_\_\_\_\_  
 Treasurer Address

The following is my (our) itemized proposal.

STP-0040-01(023)V21 / 101635302 STP-0040-01(024) / 101635303 Monroe County(ies)

Revised 07/2015

**ADDENDUM**

**DESCRIPTION OF SHEET**

TITLE SHEET

DETAILED INDEX AND GENERAL NOTES SHEETS (3)

DETAILED INDEX

DETAILED INDEX

GENERAL NOTES

TYPICAL SECTION SHEETS (7)

TYPICAL SECTIONS - RELOCATED HWY 25 MAIN FACILITY

TYPICAL SECTIONS - RELOCATED HWY 25 MAIN FACILITY

TYPICAL SECTIONS - RELOCATED HWY 25 MAIN FACILITY

TYPICAL SECTIONS - INTERCHANGE RAMPS & FRONTAGE ROAD

TYPICAL SECTION - INTERCHANGE RAMP @ EXISTING US 278

TYPICAL SECTIONS - TRANSITION AT BRIDGE ENDS & GREENBRIAR ROAD

TYPICAL SECTION - THRU CHANNELIZED INTERSECTION

QUANTITY SHEETS (10)

SUMMARY OF QUANTITIES

SUMMARY OF QUANTITIES

SUMMARY OF QUANTITIES

SUMMARY OF QUANTITIES

ESTIMATED QUANTITIES (ROADWAY)

ESTIMATED QUANTITIES (ROADWAY)

ESTIMATED QUANTITIES TRAFFIC CONTROL

ESTIMATED QUANTITIES SIGN ASSEMBLY, DIRECTIONAL SIGNS & PERMANENT SIGNING

ESTIMATED QUANTITIES TRAFFIC CONTROL SIGNS

ESTIMATED QUANTITIES PAVEMENT MARKINGS

PLAN AND PROFILE SHEETS (17)

RELOCATED HWY 25 STA. 383+00 - STA. 410+00

CONNECTOR ROAD STA. 20+00 - STA. 29+90

RELOCATED HWY 25 STA. 410+00 - STA. 440+00

RELOCATED HWY 25 STA. 440+00 - STA. 470+00

GREENBRIER ROAD STA. 15+45 - STA. 30+11

RELOCATED HWY 25 STA. 470+00 - STA. 500+00

RELOCATED HWY 25 STA. 500+00 - STA. 530+00

RELOCATED HWY 25 DETENTION BASIN

RELOCATED HWY 25 STA. 530+00 - STA. 560+00

RELOCATED HWY 25 STA. 560+00 - STA. 590+00

RELOCATED HWY 25 STA. 590+00 - STA. 590+00

SOUTHWEST RAMP @ 278 BY-PASS STA. 559+00 - STA. 576+00

RELOCATED HWY 25 STA. 576+00 - STA. 597+00

RELOCATED HWY 25 STA. 590+00 - STA. 620+00

RELOCATED HWY 25 STA. 620+00 - STA. 650+00

SOUTHEAST RAMP AT U.S. 278 STA. 649+00 - STA. 669+00

EX HWY 25 EX HWY 278

**SPECIAL DESIGN SHEETS (21)**

RELOCATED HWY 25 STA. 383+00 - STA. 410+00

CONNECTOR ROAD STA. 20+00 - STA. 29+90

RELOCATED HWY 25 STA. 410+00 - STA. 440+00

RELOCATED HWY 25 STA. 440+00 - STA. 470+00

GREENBRIER ROAD STA. 15+45 - STA. 30+11

RELOCATED HWY 25 STA. 470+00 - STA. 500+00

RELOCATED HWY 25 STA. 500+00 - STA. 530+00

RELOCATED HWY 25 STA. 530+00 - STA. 560+00

RELOCATED HWY 25 STA. 560+00 - STA. 590+00

RELOCATED HWY 25 STA. 590+00 - STA. 590+00

SOUTHWEST RAMP @ 278 BY-PASS STA. 559+00 - STA. 576+00

RELOCATED HWY 25 STA. 576+00 - STA. 597+00

RELOCATED HWY 25 STA. 590+00 - STA. 620+00

RELOCATED HWY 25 STA. 620+00 - STA. 650+00

SOUTHEAST RAMP AT U.S. 278 STA. 649+00 - STA. 669+00

EX HWY 25 EX HWY 278

INTERCHANGE LAYOUT RELOCATED HWY 25 / US 278 BY-PASS

INTERSECTION DETAIL HIGHWAY 25 & EXISTING 25 CONNECTOR

INTERSECTION DETAIL HIGHWAY 25 & GREENBRIAR RD

DETAIL CONSTRUCTION SIGNING U.S. 25 RELOCATION

TRAFFIC CONTROL PLAN NARRATIVE PHASE 1, 2 & 3

**WKG. NO.**

**SH. NO.**

1

DI-1

DI-2

GN-1

TS-1

TS-2

TS-3

TS-4

TS-5

TS-6

TS-7

SQ-1

SQ-2

SQ-3

SQ-4

EQ-1

EQ-2

EQ-3

EQ-4

EQ-5

EQ-6

3

3A

4

5

5A

6

7

7-A

8

9

9A

9B

9C

10

11

12

13

ECP3

ECP3A

ECP4

ECP5

ECP5A

ECP6

ECP7

ECP8

ECP9

ECP9A

ECP9B

ECP9C

ECP10

ECP11

ECP12

ECP13

IL-1

ID-1

ID-2

DCS-1

NAR-1

**DESCRIPTION OF SHEET**

SPECIAL DESIGN SHEETS CONTINUED (56)

TRAFFIC CONTROL PLAN HIGHWAY 25 PHASE 1

TRAFFIC CONTROL PLAN HIGHWAY 25 PHASE 1

TRAFFIC CONTROL PLAN HIGHWAY 25 PHASE 1

TRAFFIC CONTROL PLAN HIGHWAY 25 PHASE 1

TRAFFIC CONTROL PLAN HIGHWAY 25 PHASE 2

TRAFFIC CONTROL PLAN HIGHWAY 25 PHASE 2

TRAFFIC CONTROL PLAN HIGHWAY 25 PHASE 3

TRAFFIC CONTROL PLAN HIGHWAY 25 PHASE 3

TRAFFIC CONTROL PLAN HIGHWAY 25 PHASE 3

TRAFFIC CONTROL PLAN EXISTING HIGHWAY 25 & HIGHWAY 278

SIGNING DETAILS TWO LANE & FOUR LANE BRIDGE APPROACHES

TRAFFIC CONTROL PLAN PERMANENT BARRICADE WITH BERM

VEGETATION SCHEDULE

MISCELLANEOUS CONSTRUCTION DETAILS

MISCELLANEOUS CONSTRUCTION DETAILS

PAVEMENT MARKING DETAILS SR 25 RELOCATION B.O.P. TO STA. 404+00

PAVEMENT MARKING DETAILS SR 25 RELOCATION STA. 404+00 TO STA. 410+00 HWY 406 CONN / FR

PAVEMENT MARKING DETAILS SR 25 RELOCATION STA. 410+00 TO 434+00

PAVEMENT MARKING DETAILS SR 25 RELOCATION STA. 434+00 TO 458+00

PAVEMENT MARKING DETAILS SR 25 RELOCATION STA. 458+00 TO 463+00 GREENBRIER ROAD TO 23+00

PAVEMENT MARKING DETAILS GREENBRIER ROAD TO 23+00 TO 30+00

PAVEMENT MARKING DETAILS SR 25 RELOCATION STA. 463+00 TO 487+00

PAVEMENT MARKING DETAILS SR 25 RELOCATION STA. 487+00 TO 511+00

PAVEMENT MARKING DETAILS SR 25 RELOCATION STA. 511+00 TO 535+00

PAVEMENT MARKING DETAILS SR 25 RELOCATION STA. 535+00 TO 559+00

PAVEMENT MARKING DETAILS SR 25 RELOCATION STA. 559+00 TO 583+00

PAVEMENT MARKING DETAILS SR 25 RELOCATION STA. 583+00 TO 607+00

PAVEMENT MARKING DETAILS SR 25 RELOCATION STA. 607+00 TO 631+00

PAVEMENT MARKING DETAILS SR 25 RELOCATION S.W. RAMP EX. HWY 278 STA. 631+00 TO 655+00

PAVEMENT MARKING DETAILS SR 25 S.W. RAMP EX. 278 STA. 655+00 TO EXIST. HWY. 278

PAVEMENT MARKING DETAILS EXISTING HIGHWAY 25 & HIGHWAY 278

FORM GRADES HIGHWAY 25

FORM GRADES HIGHWAY 25

FORM GRADES HIGHWAY 25

FORM GRADES HIGHWAY 25

FORM GRADES HIGHWAY 25

FORM GRADES HIGHWAY 25

FORM GRADES HIGHWAY 25

FORM GRADES HIGHWAY 25

FORM GRADES HIGHWAY 25

FORM GRADES HIGHWAY 25

FORM GRADES HIGHWAY 25

FORM GRADES HIGHWAY 25

FORM GRADES HIGHWAY 25

FORM GRADES HIGHWAY 25

BRIDGE END PAVEMENT WITH RAIL AND OVERLAY

33.5' BRIDGE END PAVEMENT RAIL

DETAILS OF DITCH TREATMENT

TYPICAL TEMPORARY EROSION / SEDIMENT CONTROL APPLICATIONS

DETAIL OF SEDIMENT BARRIER APPLICATIONS

DETAILS OF SILT FENCE INSTALLATION

DITCH CHECK STRUCTURES, TYPICAL APPLICATIONS AND DETAILS

TEMPORARY EROSION, SEDIMENT AND WATER POLLUTION CONTROL MEASURES,

SILT FENCE AND HAY BALE DITCH CHECKS

DETAILS OF EROSION CONTROL WATTLE DITCH CHECK

ROCK DITCH CHECK

ROCK DITCH CHECK WITH SUMP EXCAVATION

INLET PROTECTION TYPICAL APPLICATIONS AND DETAILS

INLET PROTECTION DETAILS FOR COARSE AGGREGATE ON GRADES & SAGS

TC-1

TC-2

TC-3

TC-4

TC-5

TC-6

TC-7

TC-8

TC-9

TC-10

BSD-1

TCP-P

VS-1

MD-1

MD-2

PMD-1

PMD-2

PMD-3

PMD-4

PMD-5

PMD-5A

PMD-6

PMD-7

PMD-8

PMD-9

PMD-10

PMD-11

PMD-12

PMD-13

PMD-14

PMD-15

FG-1

FG-2

FG-3

FG-4

FG-5

FG-6

FG-7

FG-8

FG-9

FG-10

FG-11

BE-1C

BE-PR-1B

DT-1

ECD-1

ECD-2

ECD-3

ECD-4

ECD-5

ECD-6

ECD-7

ECD-8

ECD-9

ECD-10

ECD-11

WKG. NO.

SH. NO.

STATE PROJECT NO.

MISS. STP-0040-01(023)V21



ENGINEERING SOLUTIONS		
PS & E PLANS-DATE:...	2/23/15	
FMS CON. # 101635 / 302000		
FMS CON. # 101635 / 303000		
REVISIONS		
DATE	SHEET NO.	BY
3/13/15	1,2,3,13,16,17,6301,	DSP
	6315,6322,6325	
4/9/15	12,13,14,15,17,22,23,26,	DSP
	28,29,30,32,35,36	
7/13/15	17,22,23,30	DSP
8/5/15	4,39,40,41,42,43,44,45	DSP
8/12/15	46-47,49,50,51,52,53	DSP
	2,3,53,1	

DATE	REVISION
8/12/15	ADD SHEET
3/13/15	REVISED P&E DATE

MISSISSIPPI DEPARTMENT OF TRANSPORTATION

**DETAILED INDEX**

PROJECT NO. STP-0040-01(023)V21

COUNTY : MONROE

WORKING NUMBER: DI-1

SHEET NUMBER: 2

FILENAME: 002\_SHT\_DI-1.DGN

DESIGN TEAM: LH & JW

CHECKED: jwhite

DATE: JULY 2014

**ADDENDUM**

DESCRIPTION OF SHEET

SPECIAL DESIGN SHEETS CONTINUED (22)  
 INLET PROTECTION DETAILS OF WATTLES  
 INLET PROTECTION DETAILS OF MANUFACTURED INLET PROTECTION DEVICE  
 INLET PROTECTION DETAILS OF SAND BAG  
 STABILIZED CONSTRUCTION ENTRANCE  
 TEMPORARY CULVERT STREAM CROSSING  
 TEMPORARY STREAM DIVERSION  
 TEMPORARY STREAM DIVERSION (BOX EXTENSIONS)  
 FLOATING TURBIDITY CURTAIN  
 DETAILS OF EROSION CONTROL SANDBAG DITCH CHECK  
 GUARDRAIL-BRIDGE END SECTION TYPE "1" (WOOD POSTS)  
 GUARDRAIL-BRIDGE END SECTION TYPE "1" (STEEL POSTS)  
 SUPERELEVATION CASE I ROTATION ABOUT CENTERLINE (2% NORMAL SUBGRADE)  
 SUPERELEVATION TRANSITION CASE II ROTATION ABOUT EDGE OF TRAVEL WAY (2% NORMAL SUBGRADE)  
 BREAKAWAY SIGN SUPPORTS  
 SUPERELEVATION RUNOFF CASE I ROTATION ABOUT CENTERLINE  
 TYPICAL INSTALLATION AND DETAILS OF DELINEATORS AND DISTANCE REFERENCE SIGNS  
 HIGHWAY SIGN AND BARRICADE DETAILS FOR CONSTRUCTION PROJECTS  
 PERMANENT MARKING DETAILS FOR INTERCHANGE ENTRANCE RAMPS (PARALLEL AND TAPER)  
 PERMANENT MARKING DETAILS FOR INTERCHANGE EXIT RAMPS (PARALLEL AND TAPER)  
 2-LANE, 2-WAY CLEAR RAISED PAVEMENT MARKERS PLACED ON SIDE ROADS)  
 DRIVEWAYS, CURB & GUTTER & SIDEWALK  
 SUPERELEVATION RUNOFF CASE II ROTATION ABOUT EDGE OF TRAVELED WAY  
 PERMANENT SIGNING SHEET (5)  
 PERMANENT SIGN PLAN  
 PERMANENT SIGN PLAN  
 PERMANENT SIGN PLAN  
 DIRECTIONAL SIGNING PLAN HWY 25 AT HWY 278  
 DIRECTIONAL SIGNS  
 STANDARD DRAWINGS - ROADWAY SHEETS (25)  
 PAVEMENT MARKING DETAILS FOR 2-LANE AND 4-LANE DIVIDED HIGHWAYS  
 PAVEMENT MARKING LEGEND DETAILS  
 EROSION CONTROL  
 TYPICAL TEMPORARY EROSION CONTROL MEASURES (TYPE B SILT BASIN)  
 GUARDRAIL: "W" BEAM (WOOD POST)  
 GUARDRAIL: THRIE BEAM (WOOD POSTS)  
 GUARDRAIL: "W" BEAM (STEEL POST)  
 GUARDRAIL: MODIFIED THRIE BEAM (STEEL POST)  
 GUARDRAIL: TYPICAL INSTALLATION AT BRIDGE APPROACHES  
 FOR 2-LANE, 2-WAY HIGHWAY  
 GUARDRAIL: MISCELLANEOUS HARDWARE  
 STANDARD DIRECTIONAL (GUIDE) SIGNS  
 ROUTE SHIELD AND "EXIT ONLY" PANELS  
 STANDARD ROADSIDE SIGNS  
 STANDARD ROADSIDE SIGNS  
 STANDARD ROADSIDE SIGNS  
 STANDARD ROADSIDE SIGN ASSEMBLY AND INSTALLATION  
 STANDARD ROADSIDE SIGN ASSEMBLY AND INSTALLATION  
 STANDARD ROADSIDE SIGN ASSEMBLY AND INSTALLATION  
 TYPICAL INSTALLATION OF GROUND MOUNTED DIRECTIONAL SIGNS  
 BREAKAWAY SIGN SUPPORTS  
 BREAKAWAY SIGN SUPPORTS  
 SIGN FACE CONST. AND ATTACHMENT OF GROUND MOUNTED DIRECTIONAL SIGNS  
 TO STEEL BEAMS (EXTRUDED ALUMINUM PANELS)  
 TYPICAL INSTALLATION OF DELINEATORS  
 TYPICAL GUARDRAIL DELINEATION  
 TRAFFIC CONTROL PLAN WITH FLAGGER (ONE-LANE CLOSURE OF TWO-WAY TRAFFIC)

DESCRIPTION OF SHEET

STANDARD DRAWINGS - ROADWAY SHEETS CONTINUED (19)  
 TRAFFIC CONTROL PLAN FOR POSTED SPEED LIMIT OF 65 OR 70 MPH (INTERSTATES AND OTHER 4-LANE DIVIDED HIGHWAYS)  
 (MEDIAN LANE OR OUTSIDE LANE CLOSURE) (WORK DAY ONLY)  
 SHORT DURATION CLOSING OF TWO-LANE TWO-WAY HIGHWAYS  
 TRAFFIC CONTROL PLAN MOBILE OPERATIONS MULTILANE ROADS AND TWO-LANE ROADS  
 TRAFFIC CONTROL PLANS UNEVEN PAVEMENT DETAILS  
 TEMPORARY STRIPING FOR TRAFFIC CONTROL 2-LANE AND 4-LANE DIVIDED HIGHWAYS  
 RURAL DRIVEWAYS  
 TYPICAL GRADING TRANSITION BETWEEN CUTS AND FILLS  
 INTERCHANGE DESIGN FOR HIGH SPEED TAPERED EXIT RAMP  
 INTERCHANGE DESIGN FOR HIGH SPEED PARALLEL ENTRANCE RAMP  
 MISCELLANEOUS DETAIL SHEET 1. STACKED PIPE JOINTS 2. EXCAVATION AT GRADE POINTS  
 DETAILS OF PAVED FLUMES  
 PIPE CULVERT INSTALLATION  
 CONCRETE PIPE COLLAR  
 JUNCTION BOX FOR BOX CULVERT TO CONCRETE ARCH PIPE  
 DETAILS OF GRATES FOR GUTTER INLETS  
 STORM SEWER STRUCTURE TYPE SS-2  
 DROP INLET AND GRATE DETAILS FOR PIPE AND BOX CULVERTS  
 FLARED END SECTION FOR CONCRETE PIPE  
 FLARED END SECTION FOR CONCRETE ARCH PIPE  
 CROSS-SECTIONS (61)  
 MAINLINE SR 25  
 EXISTING 25 CONN  
 TIE TO EX. 25 CONN  
 GREENBRIAR RD.  
 TOTAL SHEETS (247)

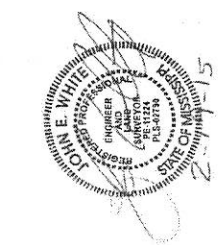
STATE PROJECT NO.  
 MISS. STP-0040-01(023)V21

WKG. NO. SH. NO.

TCP-5	6254
TCP-8	6257
TCP-11	6260
TCP-14	6263
TCP-15	6264
RD-1	6271
GT-1	6272
IR-1	6283
IR-2A	6286
MDS-1	6290
PF-1	6291
PI-1	6300
PC-1	6301
JB-1A	6303
IG-2	6315
SS-2	6322
B-9	6325
FE-1	6328
FE-1A	6329

9001-9052  
 9053-9055  
 9056  
 9057-9061

8/2/15	ADDED SHEET	
3/1/15	ADDED SHEETS	
DATE	REVISION	
BY		
DSP		
DSP		

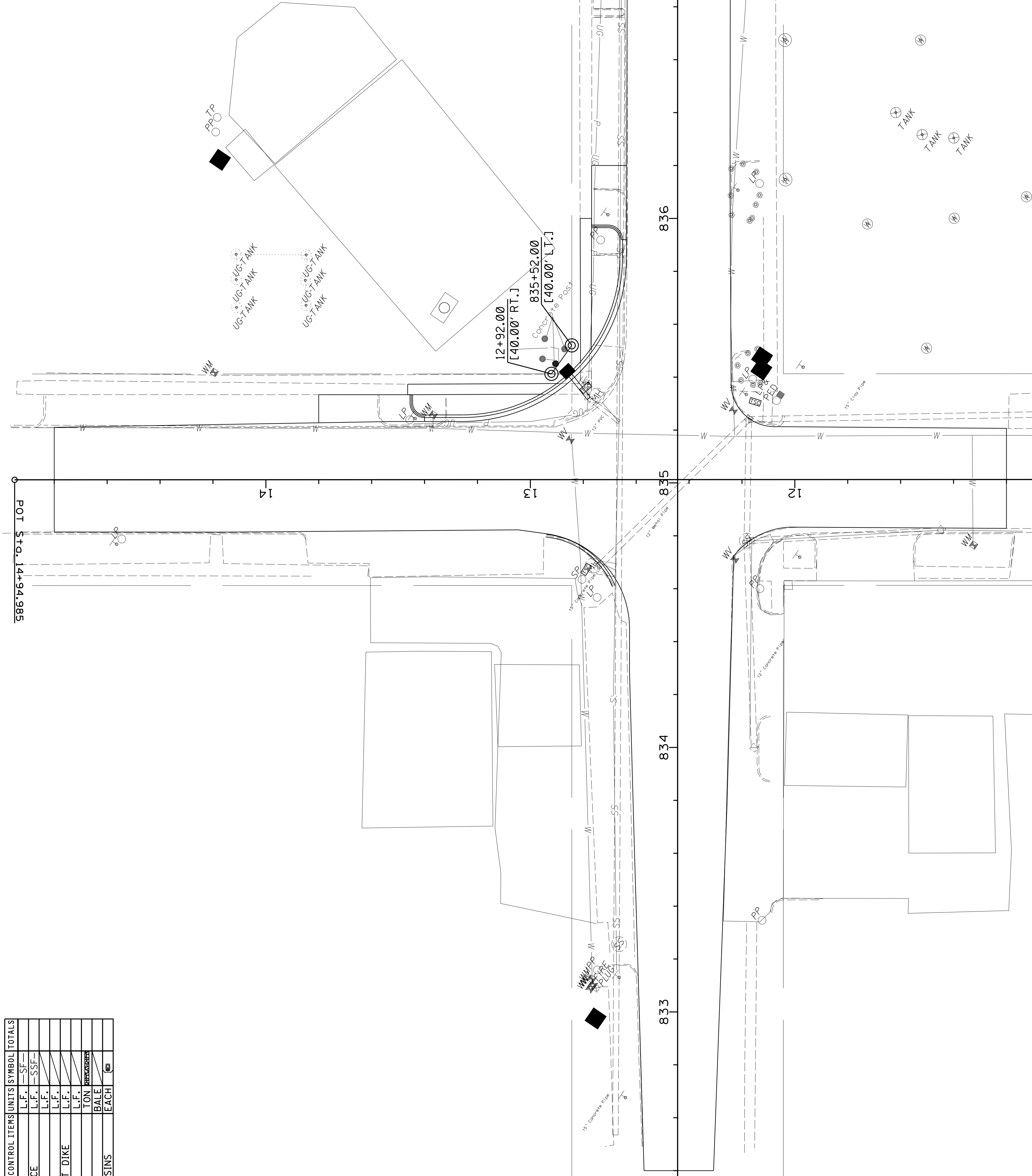


MISSISSIPPI DEPARTMENT OF TRANSPORTATION	
<b>DETAILED INDEX</b>	
PROJECT NO. STP-0040-01(023)V21	WORKING NUMBER
COUNTY : MONROE	DI-2
FILENAME: 003_SHT_DI-2.DGN	SHEET NUMBER
DESIGN TEAM: LH & JW	3
CHECKED: Jwhite	DATE: July 2014

# ADDENDUM

△ ADDED SHEET

TEMPORARY EROSION CONTROL ITEMS	UNITS	SYMBOL	TOTALS
SILT FENCE	L.F.	SF	
SUPER SILT FENCE	L.F.	SSF	
WATTLES, 12"	L.F.		
WATTLES, 20"	L.F.		
TRIANGULAR SILT DIKE	L.F.		
SANDBAGS	L.F.		
RIPRAP	TON		
EROSION CHECKS	BALE		
TYPE D SILT BASINS	EACH		



BY	REVISION
DSP	ADDED SHEET

**MISSISSIPPI DEPARTMENT OF TRANSPORTATION**  
**EX HWY 25 EX HWY 278**  
 COUNTY: MONROE  
 PROJ. NUM.: STP-0040-01(023)V21  
 FILENAME: \_\_\_\_\_  
 DESIGN TEAM \_\_\_\_\_  
 CHECKED \_\_\_\_\_  
 DATE \_\_\_\_\_

WORKING NUMBER  
**ECPI3**  
 SHEET NUMBER  
**53.1**

STATE	PROJECT NO.
MISS.	STP-0040-01(023)V21

FMS COM: 101635/203000