

SECTION 905 -- PROPOSAL (CONTINUED)

I (We) hereby certify by execution of the Section 905 proposal below, that all certifications, disclosures and affidavits incorporated herein are deemed to be duly executed in the aggregate, fully enforceable and binding upon delivery of the bid proposal. I (We) further acknowledge that this certification shall not extend to the bid bond or alternate security which must be separately executed for the benefit of the Commission. This signature does not cure deficiencies in any required certifications, disclosures and/or affidavits. I (We) also acknowledge the right of the Commission to require full and final execution on any certification, disclosure or affidavit contained in the proposal at the Commission’s election upon award. Failure to so execute at the Commission’s request within the time allowed in the Standard Specifications for execution of all contract documents will result in forfeiture of the bid bond or alternate security.

Bidder acknowledges receipt of and has added to and made a part of the proposal and contract documents the following addendum (addenda):

ADDENDUM NO. 1 DATED 10/19/2015 ADDENDUM NO. DATED
 ADDENDUM NO. 2 DATED 10/20/2015 ADDENDUM NO. DATED

Number	Description
1	Revised NTB No. 5821; Revised Bid Items; Revised or Added Plan Sheet Nos. 2, 10, 15-17, 26-27, 30-38, 1001-1003; Amendment EBS Download Required.
2	Revised NTB Nos. 2382, & 5821; Revised Bid Items; Revised or Added Plan Sheet Nos. 2, 10, 4001, & 4003; Amendment EBS Download Required.

TOTAL ADDENDA: 2
 (Must agree with total addenda issued prior to opening of bids)

Respectfully Submitted,

 DATE _____

 Contractor
 BY _____
 Signature
 TITLE _____
 ADDRESS _____
 CITY, STATE, ZIP _____
 PHONE _____
 FAX _____
 E-MAIL _____

(To be filled in if a corporation)

Our corporation is chartered under the Laws of the State of _____ and the names, titles and business addresses of the executives are as follows:

President	Address
Secretary	Address
Treasurer	Address

The following is my (our) itemized proposal.

Revised 07/2015

HSIP-0054-01(055) / 106626301 Copiah County(ies)

MISSISSIPPI DEPARTMENT OF TRANSPORTATION

| SECTION 904 - NOTICE TO BIDDERS NO. 2382

CODE: (IS)

| DATE: 02/12/2009

| SUBJECT: Status of Right-of-Way

Although it is desirable to have acquired all rights-of-way and completed all utility adjustments and work to be performed by others prior to receiving bids, sometimes it is not considered to be in the public interest to wait until each and every such clearance has been obtained. The bidder is hereby advised of possible unacquired rights-of-way, relocatees and utilities which have not been completed.

| The status of right-of-way acquisition, utility adjustments, encroachments, potentially contaminated sites and asbestos containation are set forth in the following attachments.

In the event right of entry is not available to ALL parcels of right-of-way and/or all work that is to be accomplished by others on the date set forth in the contract for the Notice to Proceed is not complete, the Department will issue a restricted Notice to Proceed.

STATUS OF RIGHT-OF-WAY

HSIP-0054-01(055)

106626-301000

Copiah County

October 13, 2015

All rights of way and legal rights of entry have been acquired, **except**

None.

ASBESTOS CONTAMINATION STATUS OF BUILDINGS
TO BE REMOVED BY THE CONTRACTOR
HSIP-0054-01(055)
106626-301000
Copiah County
August 13, 2015

Reference is made to notices to bidders entitled "Asbestos National Emission Standards for Hazardous Air Pollutants (NESHAP)" and "Removal of Obstructions".

The following pertinent information is furnished concerning asbestos containing materials (ACMs), if any, found in buildings to be removed by the Contractor.

There are no buildings in the contract to be removed.

STATUS OF POTENTIALLY CONTAMINATED SITES

HSIP-0054-01(055)

106626-301000

Copiah County

August 13, 2015

This project has been inspected and there was no visible indication of potentially contaminated sites within the proposed right of way.

ROW STATUS REPORT OF AFFECTED RAILROAD FACILITIES

PROJECT EXTERNAL NUMBER: HSIP-0054-01(055)

PROJECT FMS NUMBER: 106626/201000

TERMINI: MS 27 @ Lee Ave/Old Hwy 27 #1

COUNTY: Copiah

DATE: September 9, 2015

There are no railroads facilities affected by the above referenced project.

ENCROACHMENT CERTIFICATION

HSIP-0054-01(055)

106626301

COPIAH COUNTY(IES)

September 8, 2015

This is to certify that the above captioned project has been inspected and no encroachments were found.

UTILITY STATUS REPORT

HSIP-0054-01(055)

106626301

COPIAH COUNTY(IES)

September 8, 2015

This is to certify that the above captioned project has been inspected and there are no known utilities in conflict with the project.

Forty-eight hours prior to commencing any excavation, the Contractor is advised to call MS-One-Call at 1-800-227-6477.

MISSISSIPPI DEPARTMENT OF TRANSPORTATION

SECTION 904 - NOTICE TO BIDDERS NO. 5821

DATE: 10/20/2015

SUBJECT: Specialty Items

PROJECT: HSIP-0054-01(055)/106626301 - COPIAH

Pursuant to the provisions of Section 108, the following work items are hereby designated as "Specialty Items" for this contract. Bidders are reminded that these items must be subcontracted in order to be considered as specialty items.

CATEGORY: CURBING, SIDEWALKS, GUTTERS

Line No	Pay Item	Description
0370	609-B003	Concrete Curb, Special Design
0380	609-C001	Concrete Curb, Integral, Type 1
0390	609-D002	Combination Concrete Curb and Gutter Type 2
0400	609-D005	Combination Concrete Curb and Gutter Type 3B Modified

CATEGORY: DISPOSAL OF BUILDINGS, RIGHT OF WAY CLEA

Line No	Pay Item	Description
0050	202-B076	Removal of Traffic Stripe

CATEGORY: EROSION CONTROL

Line No	Pay Item	Description
0170	211-B001	Topsoil for Slope Treatment, Contractor Furnished
0180	217-A001	Ditch Liner
0190	219-A001	Watering
0200	220-A001	Insect Pest Control
0210	221-A001	Portland Cement Concrete Paved Ditch
0220	235-A001	Temporary Erosion Checks
0230	239-A001	Temporary Slope Drains
0700	907-216-A001	Solid Sodding
0710	907-225-A001	Grassing
0720	907-225-B001	Agricultural Limestone
0730	907-225-C001	Mulch, Vegetative Mulch
0740	907-226-A001	Temporary Grassing
0760	907-234-C002	Super Silt Fence
0770	907-237-A003	Wattles, 20"
0780	907-245-A001	Triangular Silt Dike
0790	907-246-B002	Rockbags
0800	907-249-A001	Riprap for Erosion Control

CATEGORY: LANDSCAPING

Line No	Pay Item	Description
---------	----------	-------------

CATEGORY: LANDSCAPING

Line No	Pay Item	Description
0750	907-230-A029	Shrub Planting, Dwarf Juniper

CATEGORY: LIGHTING, ALUMINUM TRUSSED ARM

Line No	Pay Item	Description
0630	682-A031	Underground Branch Circuit, AWG 6, 3 Conductor
0632	682-B031	Underground Branch Circuit, Jacked or Bored, AWG 6, 3 Conductor
0660	682-E001	Underground Junction Box
0670	682-E002	Structure Mounted Junction Box
0680	682-F001	Secondary Power Controllers
1024	907-684-PP002	Pole Foundation, Auger Base

CATEGORY: PAVEMENT STRIPING AND MARKING

Line No	Pay Item	Description
0510	627-K001	Red-Clear Reflective High Performance Raised Markers
0520	627-L001	Two-Way Yellow Reflective High Performance Raised Markers
0980	907-626-C007	6" Thermoplastic Double Drop Edge Stripe, Continuous White
0990	907-626-E005	6" Thermoplastic Double Drop Traffic Stripe, Continuous Yellow
1000	907-626-G006	Thermoplastic Double Drop Detail Stripe, White
1010	907-626-G007	Thermoplastic Double Drop Detail Stripe, Yellow
1020	907-626-H010	Thermoplastic Double Drop Legend, White

CATEGORY: SURVEY AND STAKING

Line No	Pay Item	Description
1030	907-699-A002	Roadway Construction Stakes

CATEGORY: TRAFFIC CONTROL - PERMANENT

Line No	Pay Item	Description
0530	630-A001	Standard Roadside Signs, Sheet Aluminum, 0.080" Thickness
0540	630-A002	Standard Roadside Signs, Sheet Aluminum, 0.125" Thickness
0550	630-B001	Interstate Directional Signs, Bolted Extruded Aluminum Panels, Ground Mounted
0560	630-C001	Steel U-Section Posts, 2.0 lb/ft
0570	630-C003	Steel U-Section Posts, 3.0 lb/ft
0580	630-D002	Structural Steel Beams, S4 x 7.7
0590	630-D003	Structural Steel Beams, W6 x 9
0600	630-E001	Structural Steel Angles & Bars, 3" x 3" x 1/4" Angles
0610	630-E004	Structural Steel Angles & Bars, 7/16" x 2 1/2" Flat Bar
0620	630-K001	Welded & Seamless Steel Pipe Posts, 3"

CATEGORY: TRAFFIC CONTROL - TEMPORARY

Line No	Pay Item	Description
0410	619-A1001	Temporary Traffic Stripe, Continuous White
0420	619-A2001	Temporary Traffic Stripe, Continuous Yellow
0430	619-A5001	Temporary Traffic Stripe, Detail
0440	619-A6002	Temporary Traffic Stripe, Legend
0450	619-D1001	Standard Roadside Construction Signs, Less than 10 Square Feet
0460	619-D2001	Standard Roadside Construction Signs, 10 Square Feet or More
0462	619-D4001	Directional Signs
0470	619-G4005	Barricades, Type III, Double Faced
0480	619-G5001	Free Standing Plastic Drums
0490	619-G7001	Warning Lights, Type "B"
0970	907-619-E3001	Changeable Message Sign

Intersection Improvements on SR 27 at Lee Avenue/Old HWY 27, known as Federal Aid Project No. HSIP-0054-01(055) / 106626301 in Copiah County.

Line No.	Item Code	Adj Code	Quantity	Units	Description [Fixed Unit Price]
Roadway Items					
0010	201-A001		1	Lump Sum	Clearing and Grubbing
0020	202-B005		6,137	Square Yard	Removal of Asphalt Pavement, All Depths
0030	202-B042		6	Each	Removal of Flared End Section, All Sizes
0040	202-B070		6	Each	Removal of Sign Including Post & Footing
0050	202-B076		1,940	Linear Feet	Removal of Traffic Stripe
0060	202-B125		2	Each	Removal of Signal Pole Including Hardware and Wiring
0070	202-B132		1	Each	Removal of Traffic Signal
0080	202-B152		2	Each	Removal of Right-Of-Way Marker
0090	202-B162		1	Each	Removal of Secondary Power Controller
0100	202-B218		1	Each	Removal of Inlet Tops
0110	202-B260		1	Each	Removal of Power Pole
0120	203-EX017	(E)	19,847	Cubic Yard	Borrow Excavation, AH, FME, Class B9
0130	203-G003	(E)	12	Cubic Yard	Excess Excavation, FM, AH
0140	203-H003	(E)	5,455	Cubic Yard	Surplus Excavation, FM, AH
0150	206-A001	(S)	43	Cubic Yard	Structure Excavation
0160	209-A004		12,890	Square Yard	Geotextile Stabilization, Type V, Non-Woven
0170	211-B001	(E)	3,237	Cubic Yard	Topsoil for Slope Treatment, Contractor Furnished
0180	217-A001		80	Square Yard	Ditch Liner
0190	219-A001		32	Thousand Gallon	Watering [\$20.00]
0200	220-A001		6	Acre	Insect Pest Control [\$30.00]
0210	221-A001	(S)	1	Cubic Yard	Portland Cement Concrete Paved Ditch
0220	235-A001		41	Bale	Temporary Erosion Checks
0230	239-A001		468	Linear Feet	Temporary Slope Drains
0240	321-A001		1	Mile	6" In-Grade Preparation
0250	907-406-A001		1,854	Square Yard	Cold Milling of Bituminous Pavement, All Depths
0260	501-D001		93	Linear Feet	Expansion Joints, With Dowels
0270	501-H001		66	Each	Dowels, Installed
0280	602-A001	(S)	49	Pounds	Reinforcing Steel
0290	603-CA002	(S)	120	Linear Feet	18" Reinforced Concrete Pipe, Class III
0300	603-CA003	(S)	56	Linear Feet	24" Reinforced Concrete Pipe, Class III
0310	603-CA005	(S)	44	Linear Feet	36" Reinforced Concrete Pipe, Class III
0320	603-CB001	(S)	4	Each	18" Reinforced Concrete End Section
0330	603-CB002	(S)	1	Each	24" Reinforced Concrete End Section

Line No.	Item Code	Adj Code	Quantity	Units	Description [Fixed Unit Price]
0340	603-CB004	(S)	1	Each	36" Reinforced Concrete End Section
0350	603-SB038	(S)	1	Each	18" Branch Connections, Stub into Inlet
0360	604-B001		127	Pounds	Gratings
0370	609-B003	(S)	593	Linear Feet	Concrete Curb, Special Design
0380	609-C001	(S)	389	Linear Feet	Concrete Curb, Integral, Type 1
0390	609-D002	(S)	651	Linear Feet	Combination Concrete Curb and Gutter Type 2
0400	609-D005	(S)	1,936	Linear Feet	Combination Concrete Curb and Gutter Type 3B Modified
0410	619-A1001		11,341	Linear Feet	Temporary Traffic Stripe, Continuous White
0420	619-A2001		10,006	Linear Feet	Temporary Traffic Stripe, Continuous Yellow
0430	619-A5001		13,139	Linear Feet	Temporary Traffic Stripe, Detail
0440	619-A6002		90	Square Feet	Temporary Traffic Stripe, Legend
0450	619-D1001		253	Square Feet	Standard Roadside Construction Signs, Less than 10 Square Feet
0460	619-D2001		264	Square Feet	Standard Roadside Construction Signs, 10 Square Feet or More
0462	619-D4001		308	Square Feet	Directional Signs
0470	619-G4005		12	Linear Feet	Barricades, Type III, Double Faced
0480	619-G5001		95	Each	Free Standing Plastic Drums
0490	619-G7001		4	Each	Warning Lights, Type "B"
0500	620-A001		1	Lump Sum	Mobilization
0510	627-K001		16	Each	Red-Clear Reflective High Performance Raised Markers
0520	627-L001		82	Each	Two-Way Yellow Reflective High Performance Raised Markers
0530	630-A001		109	Square Feet	Standard Roadside Signs, Sheet Aluminum, 0.080" Thickness
0540	630-A002		103	Square Feet	Standard Roadside Signs, Sheet Aluminum, 0.125" Thickness
0550	630-B001		308	Square Feet	Interstate Directional Signs, Bolted Extruded Aluminum Panels, Grou Mounted
0560	630-C001		14	Linear Feet	Steel U-Section Posts, 2.0 lb/ft
0570	630-C003		355	Linear Feet	Steel U-Section Posts, 3.0 lb/ft
0580	630-D002		86	Linear Feet	Structural Steel Beams, S4 x 7.7
0590	630-D003		105	Linear Feet	Structural Steel Beams, W6 x 9
0600	630-E001		136	Pounds	Structural Steel Angles & Bars, 3" x 3" x 1/4" Angles
0610	630-E004		40	Pounds	Structural Steel Angles & Bars, 7/16" x 2 1/2" Flat Bar
0620	630-K001		30	Linear Feet	Welded & Seamless Steel Pipe Posts, 3"
0630	682-A031		1,000	Linear Feet	Underground Branch Circuit, AWG 6, 3 Conductor
0632	682-B031		133	Linear Feet	Underground Branch Circuit, Jacked or Bored, AWG 6, 3 Conductor
0660	682-E001		1	Each	Underground Junction Box

Line No.	Item Code	Adj Code	Quantity	Units	Description [Fixed Unit Price]
0670	682-E002		1	Each	Structure Mounted Junction Box
0680	682-F001		1	Each	Secondary Power Controllers
0700	907-216-A001		891	Square Yard	Solid Sodding
0710	907-225-A001		12	Acre	Grassing
0720	907-225-B001		6	Ton	Agricultural Limestone
0730	907-225-C001		24	Ton	Mulch, Vegetative Mulch
0740	907-226-A001		6	Acre	Temporary Grassing
0750	907-230-A029		160	Each	Shrub Planting, Dwarf Juniper
0760	907-234-C002		4,000	Linear Feet	Super Silt Fence
0770	907-237-A003		300	Linear Feet	Wattles, 20"
0780	907-245-A001		60	Linear Feet	Triangular Silt Dike
0790	907-246-B002		400	Each	Rockbags
0800	907-249-A001		100	Ton	Riprap for Erosion Control
0810	907-304-B002	(GT)	3,191	Ton	Granular Material, Class 5, Group D
0820	907-403-A019	(BA1)	1,487	Ton	19-mm, ST, Asphalt Pavement
0830	907-403-A027	(BA1)	576	Ton	9.5-mm, HT, Asphalt Pavement
0840	907-403-A028	(BA1)	1,193	Ton	12.5-mm, HT, Asphalt Pavement
0850	907-403-A029	(BA1)	1,338	Ton	19-mm, HT, Asphalt Pavement
0860	907-403-B021	(BA1)	727	Ton	12.5-mm, HT, Asphalt Pavement, Leveling
0870	907-407-A001	(A2)	1,715	Gallon	Asphalt for Tack Coat
0880	907-601-A001	(S)	13	Cubic Yard	Class "B" Structural Concrete
0890	907-601-B003	(S)	9	Cubic Yard	Class "B" Structural Concrete, Minor Structures
0900	907-604-PP003		1	Each	Modify Existing Inlet, Per Plans
0910	907-616-C004	(S)	10,494	Square Feet	Colored and Imprinted Concrete Median and Island Pavement, 4-incl Thickness
0920	907-616-C006	(S)	629	Square Feet	Colored and Imprinted Concrete Median and Island Pavement, 10-in Thickness
0930	907-616-C007	(S)	4,987	Square Feet	Colored and Imprinted Concrete Median and Island Pavement, 12-in Thickness
0940	907-617-A001		14	Each	Right-of-Way Marker
0950	907-618-A001		1	Lump Sum	Maintenance of Traffic
0960	907-618-B001		1	Square Feet	Additional Construction Signs [\$10.00]
0970	907-619-E3001		4	Each	Changeable Message Sign
0980	907-626-C007		3,469	Linear Feet	6" Thermoplastic Double Drop Edge Stripe, Continuous White
0990	907-626-E005		2,268	Linear Feet	6" Thermoplastic Double Drop Traffic Stripe, Continuous Yellow
1000	907-626-G006		2,087	Linear Feet	Thermoplastic Double Drop Detail Stripe, White

Line No.	Item Code	Adj Code	Quantity	Units	Description [Fixed Unit Price]
1010	907-626-G007		7,932	Linear Feet	Thermoplastic Double Drop Detail Stripe, Yellow
1020	907-626-H010		359	Square Feet	Thermoplastic Double Drop Legend, White
1022	907-683-PP001		8	Each	Lighting Assembly,
1024	907-684-PP002		8	Each	Pole Foundation, Auger Base
1030	907-699-A002		1	Lump Sum	Roadway Construction Stakes
ALTERNATE GROUP AA NUMBER 1					
1040	907-304-F002	(GT)	7,860	Ton	Size 610 Crushed Stone Base
ALTERNATE GROUP AA NUMBER 2					
1050	907-304-F003	(GT)	7,860	Ton	3/4" and Down Crushed Stone Base
ALTERNATE GROUP AA NUMBER 3					
1060	907-304-F004	(GT)	7,860	Ton	Size 825B Crushed Stone Base

ADDENDUM

DESCRIPTION OF SHEET

TITLE SHEET (1)
 DETAILED INDEX
 DETAILED INDEX
 GENERAL NOTES (1)
 GENERAL NOTES
 TYPICAL SECTION SHEETS (3)
 TYPICAL SECTION – SR 27
 TYPICAL SECTION – CIRCULATORY ROADWAY
 TYPICAL SECTION – LEE AVENUE-OLD HWY 27
 SUMMARY OF QUANTITIES SHEETS (3)
 SUMMARY OF QUANTITIES
 SUMMARY OF QUANTITIES
 SUMMARY OF QUANTITIES
 ESTIMATED QUANTITIES SHEETS (7)
 ESTIMATED QUANTITIES – EARTHWORK
 ESTIMATE QUANTITIES – REMOVAL OF ASPHALT, ISLAND PAVEMENT, DRIVEWAYS, EROSION CONTROL ITEMS
 ESTIMATED QUANTITIES – PERMANENT MARKING, TEMPORARY MARKING
 ESTIMATED QUANTITIES – PIPE CULVERT DRAINAGE STRUCTURES
 SUMMARY OF TRAFFIC CONTROL ITEMS
 ESTIMATED QUANTITIES FOR TRAFFIC CONTROL SIGNS
 STANDARD ROADSIDE SIGNS
 PLAN & PROFILE SHEETS (7)
 SR 27
 SR 27 LT
 SR 27 RT
 CIRCULATORY ROADWAY
 LEE AVENUE AND OLD HWY 27
 LEE AVENUE AND OLD HWY 27 LT
 LEE AVENUE AND OLD HWY 27 RT
 EROSION CONTROL PLANS (1)
 SR 27
 TRAFFIC CONTROL PLAN SHEETS (13)
 CONSTRUCTION SIGNING PLAN
 TRAFFIC CONTROL – GENERAL NOTES
 TYPICAL SECTIONS – PHASE 1
 INTERSECTION DETAILS – PHASE 1 – SR 27 AT LEE AVENUE
 TRAFFIC CONTROL – PHASE 1 – HIGHWAY 27
 TRAFFIC CONTROL – PHASE 1 – HIGHWAY 27
 TRAFFIC CONTROL – PHASE 1 – HIGHWAY 27
 TRAFFIC CONTROL – PHASE 2 – HIGHWAY 27
 TRAFFIC CONTROL – PHASE 2 – HIGHWAY 27
 TRAFFIC CONTROL – PHASE 2 – HIGHWAY 27
 TRAFFIC CONTROL – PHASE 3 – HIGHWAY 27
 TRAFFIC CONTROL – PHASE 3 – HIGHWAY 27
 TRAFFIC CONTROL – PHASE 3 – HIGHWAY 27
 TRAFFIC CONTROL – PHASE 4 – HIGHWAY 27
 TRAFFIC CONTROL – PHASE 4 – HIGHWAY 27
 TRAFFIC CONTROL – PHASE 4 – HIGHWAY 27
 INTERSECTION DETAIL SHEETS AND FORM GRADES (3)
 SR 27 AT LEE AVENUE
 SR 27 AT LEE AVENUE – GEOMETRIC DETAILS
 SR 27 AT LEE AVENUE – FORM GRADES
 PERMANENT STRIPING SHEETS (2)
 PAVEMENT MARKINGS
 PAVEMENT MARKINGS DETAIL
 SPECIAL DESIGN SHEETS – ROADWAY (39)
 MISCELLANEOUS CONSTRUCTION DETAILS
 RIGHT OF WAY MARKER
 RIGHT OF WAY MARKERS
 DRIVEWAYS, CURB & GUTTER, & SIDEWALK
 DRIVEWAYS, INTEGRAL CURB & SIDEWALK
 SUPERELEVATION CASE 1 ROTATION ABOUT CENTERLINE (2% NORMAL SUBGRADE)

WKG. NO. SH. NO.

DI-1
 DI-2
 GN-1
 TS-1
 TS-2
 TS-3
 SOS-1
 SOS-2
 SOS-3
 EQ-1
 EQ-2
 EQ-3
 EQ-4
 EQ-5
 TCP-Q
 SRS-1
 3
 3A
 3B
 3C
 3D
 3E
 3F
 ECP-3
 DCS-1
 TC-GN
 TC1-1
 TC1-2
 TC1-3
 TC1-4
 TC2-1
 TC2-2
 TC3-1
 TC3-2
 TC4-1
 TC4-2
 ID-1
 ID-2
 FG-1
 PMD-1
 PMDT-1
 MD-1
 RW-1
 RWC-1
 SDSD-1
 SDSD-2
 SDSE-2A

DESCRIPTION OF SHEET

SUPERELEVATION RUNOFF CASE 1 ROTATION ABOUT CENTERLINE
 LANDSCAPE PLAN – SR 27 AT LEE AVENUE
 VEGETATION SCHEDULE
 TYPICAL TEMPORARY EROSION / SEDIMENT CONTROL APPLICATIONS
 DETAILS OF SEDIMENT BARRIER APPLICATIONS
 DETAILS OF SILT FENCE INSTALLATION
 DITCH CHECK STRUCTURES, TYPICAL APPLICATIONS AND DETAILS
 TEMPORARY EROSION, SEDIMENT AND WATER POLLUTION CONTROL MEASURES, SILT FENCE AND HAY BALE DITCH CHECKS
 DETAILS OF EROSION CONTROL WATTLE DITCH CHECK
 DETAILS OF EROSION CONTROL SILT DIKE DITCH CHECK
 ROCK DITCH CHECK
 ROCK DITCH CHECK WITH SUMP EXCAVATION
 INLET PROTECTION TYPICAL APPLICATIONS AND DETAILS
 INLET PROTECTION DETAILS FOR COARSE AGGREGATE ON GRADES & SAGS
 INLET PROTECTION DETAILS OF WATTLES
 INLET PROTECTION DETAILS OF MANUFACTURED INLET PROTECTION DEVICE
 INLET PROTECTION DETAILS OF SAND BAGS
 STABILIZED CONSTRUCTION ENTRANCE
 TEMPORARY CULVERT STREAM CROSSING
 TEMPORARY STREAM DIVERSION
 TEMPORARY STREAM DIVERSION (BOX EXTENSIONS)
 FLOATING TURBIDITY CURTAIN
 DETAILS OF EROSION CONTROL SANDBAG DITCH CHECK
 DETAILS OF TYPICAL DITCH TREATMENTS
 DITCH TREATMENT – INSTALLATION DETAIL FOR SOIL REINFORCING MAT
 EROSION CONTROL BLANKET
 TYPICAL TEMPORARY EROSION CONTROL MEASURES (TYPE "D" SILT BASIN)
 TRAFFIC CONTROL DETAILS – DRUM PLACEMENT AND SHOULDER CLOSURE
 TRAFFIC CONTROL PLAN FOR POSTED SPEED LIMIT LESS THAN 65 MPH (4-LANE: MEDIAN OR OUTSIDE LANE CLOSURE) (EXTENDED PERIOD)
 HIGHWAY SIGN AND BARRICADE DETAILS FOR CONSTRUCTION PROJECTS
 LOCATION OF R16-3 SIGNS
 PERMANENT SIGNING SHEETS (3)
 PERMANENT SIGNING PLAN
 PERMANENT SIGN DETAILS – HIGHWAY 27
 STANDARD ROADSIDE SIGN DETAILS – HIGHWAY 27
 PERMANENT LIGHTING SHEETS (2)
 HIGHWAY LIGHTING – SR 27 AT LEE AVENUE
 LIGHTING DETAILS – SR 27 AT LEE AVENUE
 LIGHTING DETAILS – SR 27 AT LEE AVENUE

WKG. NO. SH. NO.

SDRO-1
 LDSC-1
 VS-1
 ECD-1
 ECD-2
 ECD-3
 ECD-4
 ECD-5
 ECD-6
 ECD-7
 ECD-8
 ECD-9
 ECD-10
 ECD-11
 ECD-12
 ECD-13
 ECD-14
 ECD-15
 ECD-16
 ECD-17
 ECD-18
 ECD-19
 ECD-20
 DT-1
 DT-1A
 ECB-1
 TEC-D
 TCP-SC
 SDTCP-3
 SCTCP-10
 SSD-1
 PSP-1
 PSD-1
 PSD-2
 L-1
 LD-1
 LD-2
 1001
 1002
 1003
 4001
 4002
 4003

STATE PROJECT NO.
 MISS. HSIP-0054-01(055)



REVISIONS		DATE	BY
9/14/15	SQS-1,2,3; EQ-2,4; TCP-Q; SRS-1	DFS	DFS
10/13/15	SQS-3; EQ-5; TCP-Q; SRS-1; DCS-1; TC-GN; TC1-2,3,4; TC2-1,2; TC3-1,2; TC4-1,2; PSP-1; PSD-1,2	DFS	DFS
10/16/15	DI-1; SOS-3; L-1; LD-2	DFS	DFS

10/16/15	LIGHTING REVISION	DFS
DATE	REVISION	BY

PS & E PLANS-DATE: 8/11/2015
 FMS CON.: 106626/301000

REVISIONS

SHEET NO. BY

9/14/15 SQS-1,2,3; EQ-2,4; TCP-Q; SRS-1 DFS

10/13/15 SQS-3; EQ-5; TCP-Q; SRS-1; DCS-1; TC-GN; TC1-2,3,4; TC2-1,2; TC3-1,2; TC4-1,2; PSP-1; PSD-1,2 DFS

10/16/15 DI-1; SOS-3; L-1; LD-2 DFS

MISSISSIPPI DEPARTMENT OF TRANSPORTATION

DETAILED INDEX

PROJ. NO.: HSIP-0054-01(055)
 COUNTY: COPIAH

WORKING NUMBER
 DI-1

SHEET NUMBER
 2

ADDENDUM

SUMMARY OF QUANTITIES (SHEET 3)

PAY ITEM NO.	PAY ITEM	UNIT	PRELIMINARY	FINAL
907-618-A001	MAINTENANCE OF TRAFFIC	LS	100%	
907-618-B001	ADDITIONAL CONSTRUCTION SIGNS	SF	1	
619-A1001	TEMPORARY TRAFFIC STRIPE, CONTINUOUS WHITE	LF	11,341	
619-A2001	TEMPORARY TRAFFIC STRIPE, CONTINUOUS YELLOW	LF	10,006	
619-A5001	TEMPORARY TRAFFIC STRIPE, DETAIL	LF	13,139	
619-A6002	TEMPORARY TRAFFIC STRIPE, LEGEND	SF	90	
619-D1001	STANDARD ROADSIDE CONSTRUCTION SIGNS, LESS THAN 10 SQUARE FEET	SF	253	
619-D2001	STANDARD ROADSIDE CONSTRUCTION SIGNS, 10 SQUARE FEET OR MORE	SF	264	
619-D4001	DIRECTIONAL SIGNS	SF	308	
907-619-E3001	CHANGEABLE MESSAGE SIGN	EA	4	
619-G4005	BARRICADES, TYPE III, DOUBLE FACED	LF	12	
619-G5001	FREE STANDING PLASTIC DRUMS	EA	95	
619-G7001	WARNING LIGHTS, TYPE "B"	EA	4	
620-A001	MOBILIZATION	LS	100%	
907-626-C007	6" THERMOPLASTIC DOUBLE DROP EDGE STRIPE, CONTINUOUS WHITE	LF	3,469	
907-626-E005	6" THERMOPLASTIC DOUBLE DROP TRAFFIC STRIPE, CONTINUOUS YELLOW	LF	2,268	
907-626-G006	THERMOPLASTIC DOUBLE DROP DETAIL STRIPE, WHITE	LF	2,087	
907-626-G007	THERMOPLASTIC DOUBLE DROP DETAIL STRIPE, YELLOW	LF	7,932	
907-626-H010	THERMOPLASTIC DOUBLE DROP LEGEND, WHITE	SF	359	
627-K001	RED-CLEAR REFLECTIVE HIGH PERFORMANCE RAISED MARKERS	EA	16	
627-L001	TWO-WAY YELLOW REFLECTIVE HIGH PERFORMANCE RAISED MARKERS	EA	82	
630-A001	STANDARD ROADSIDE SIGNS, SHEET ALUMINUM, 0.080" THICKNESS	SF	109	
630-A002	STANDARD ROADSIDE SIGNS, SHEET ALUMINUM, 0.125" THICKNESS	SF	103	
630-B001	INTERSTATE DIRECTIONAL SIGNS, BOLTED EXTRUDED ALUMINUM PANELS, GROUND MOUNTED	SF	308	
630-C001	STEEL U-SECTION POSTS, 2.0 LB/FT	LF	14	
630-C003	STEEL U-SECTION POSTS, 3.0 LB/FT	LF	355	
630-D002	STRUCTURAL STEEL BEAMS, S4 X 7.7	LF	86	
630-D003	STRUCTURAL STEEL BEAMS, W6 X 9	LF	105	
630-E001	STRUCTURAL STEEL ANGLES & BARS, 3" X 3" X 1/4" ANGLES	LBS	136	
630-E004	STRUCTURAL STEEL ANGLES & BARS, 7/16" X 2 1/2" FLAT BAR	LBS	40	
630-K001	WELDED & SEAMLESS STEEL PIPE POSTS, 3"	LF	30	
682-A031	UNDERGROUND BRANCH CIRCUIT, AWG 6, 3 CONDUCTOR	LF	1,000	
682-B031	UNDERGROUND BRANCH CIRCUIT, JACKED OR BORED, AWG 6, 3 CONDUCTOR	LF	133	
682-E001	UNDERGROUND JUNCTION BOX	EA	1	
682-E002	STRUCTURE MOUNTED JUNCTION BOX	EA	1	
682-F001	SECONDARY POWER CONTROLLERS	EA	1	
907-683-PP001	LIGHTING ASSEMBLY, PER PLANS	EA	8	
907-684-PP002	POLE FOUNDATION, AUGER BASE PER PLANS	EA	8	
907-699-A002	ROADWAY CONSTRUCTION STAKES	LS	100%	

10/16/15	REVISION TO LIGHTING PLAN	DFS
10/13/15	REVISION TO TCF AND PSP	DFS
9/14/15	QUANT. REVIEW	DFS
DATE	REVISION	BY

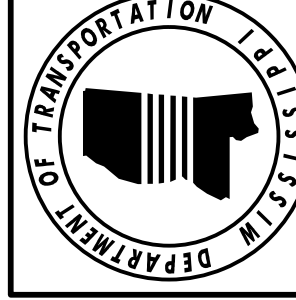
MISSISSIPPI DEPARTMENT OF TRANSPORTATION

SUMMARY OF QUANTITIES

PROJ. NO.: HSIP-0054-01(055)
 COUNTY: COPIAH

WORKING NUMBER
SQS-3

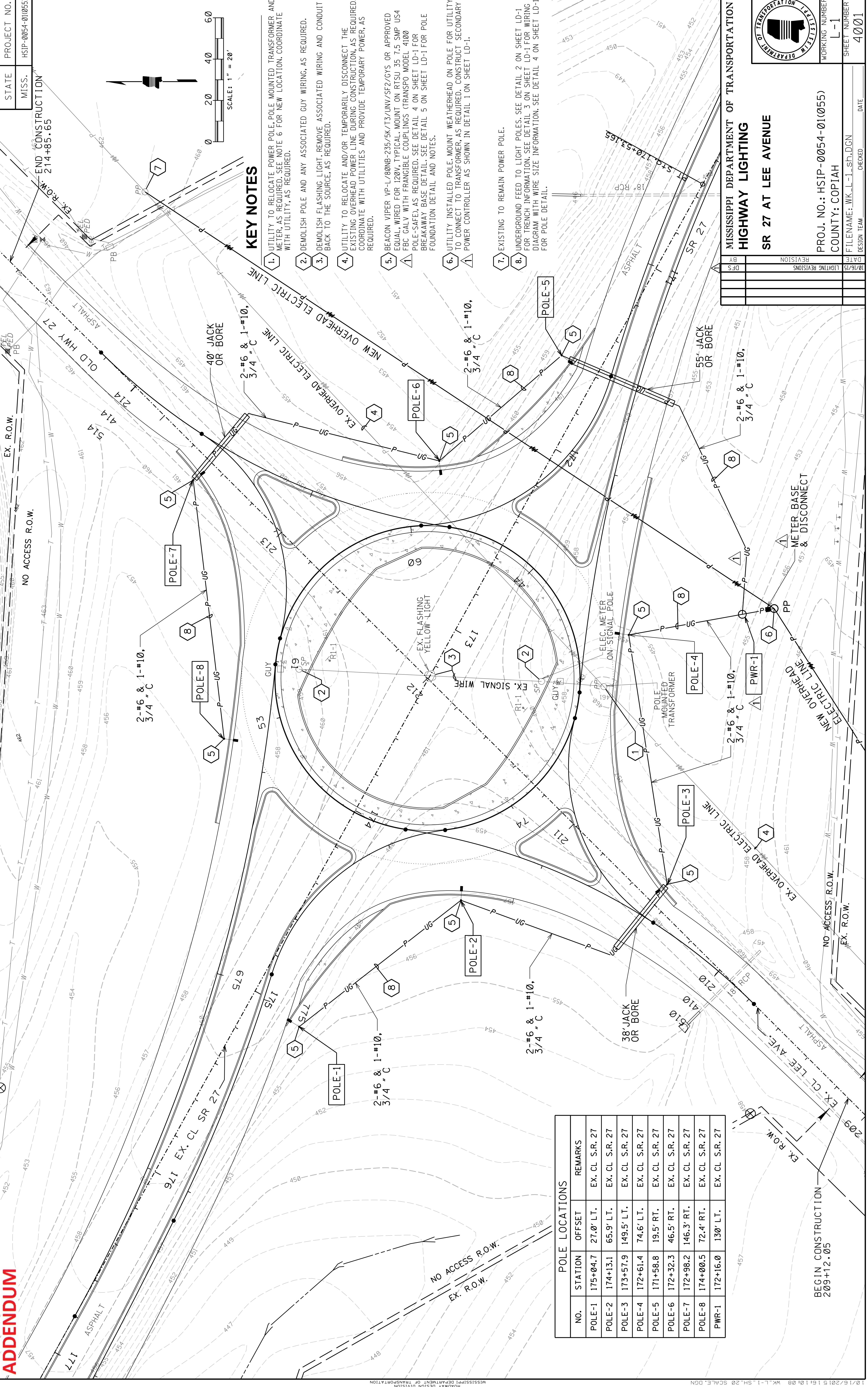
FILENAME: sqs-sh.dgn
 DESIGN TEAM PICKERING CHECKED DFS DATE
 SHEET NUMBER
10



ADDENDUM

PROJECT NO. HSIP-0054-01(055)
STATE MISS.

END CONSTRUCTION
214+85.65



KEY NOTES

1. UTILITY TO RELOCATE POWER POLE, POLE MOUNTED TRANSFORMER AND METER, AS REQUIRED. SEE NOTE 6 FOR NEW LOCATION, COORDINATE WITH UTILITY, AS REQUIRED.
2. DEMOLISH POLE AND ANY ASSOCIATED GUY WIRING, AS REQUIRED.
3. DEMOLISH FLASHING LIGHT. REMOVE ASSOCIATED WIRING AND CONDUIT BACK TO THE SOURCE, AS REQUIRED.
4. UTILITY TO RELOCATE AND/OR TEMPORARILY DISCONNECT THE EXISTING OVERHEAD POWER LINE DURING CONSTRUCTION, AS REQUIRED. COORDINATE WITH UTILITIES AND PROVIDE TEMPORARY POWER, AS REQUIRED.
5. BEACON VIPER VP-L/80NB-235/5K/T3/UUV/SF2/GYS OR APPROVED EQUAL, WIRED FOR 120V, TYPICAL. MOUNT ON RTSU 35 7.5 SMP US4 FBC GALV WITH FRANGIBLE COUPLINGS (TRANSP0 MODEL 4100 P0LE-SAFE), AS REQUIRED. SEE DETAIL 4 ON SHEET LD-1 FOR BREAKAWAY BASE DETAIL. SEE DETAIL 5 ON SHEET LD-1 FOR POLE FOUNDATION DETAIL AND NOTES.
6. UTILITY INSTALLED POLE. MOUNT WEATHERHEAD ON POLE FOR UTILITY TO CONNECT TO TRANSFORMER, AS REQUIRED. CONSTRUCT SECONDARY POWER CONTROLLER AS SHOWN IN DETAIL 1 ON SHEET LD-1.
7. EXISTING TO REMAIN POWER POLE.
8. UNDERGROUND FEED TO LIGHT POLES. SEE DETAIL 2 ON SHEET LD-1 FOR TRENCH INFORMATION. SEE DETAIL 3 ON SHEET LD-1 FOR WIRING DIAGRAM WITH WIRE SIZE INFORMATION. SEE DETAIL 4 ON SHEET LD-1 FOR POLE DETAIL.

NO.	STATION	OFFSET	REMARKS
POLE-1	175+04.7	27.0' LT.	EX. CL S.R. 27
POLE-2	174+13.1	65.9' LT.	EX. CL S.R. 27
POLE-3	173+57.9	149.5' LT.	EX. CL S.R. 27
POLE-4	172+61.4	74.6' LT.	EX. CL S.R. 27
POLE-5	171+58.8	19.5' RT.	EX. CL S.R. 27
POLE-6	172+32.3	46.5' RT.	EX. CL S.R. 27
POLE-7	172+98.2	146.3' RT.	EX. CL S.R. 27
POLE-8	174+00.5	72.4' RT.	EX. CL S.R. 27
PWR-1	172+16.0	130' LT.	EX. CL S.R. 27

BEGIN CONSTRUCTION
209+12.05

MISSISSIPPI DEPARTMENT OF TRANSPORTATION
HIGHWAY LIGHTING

SR 27 AT LEE AVENUE

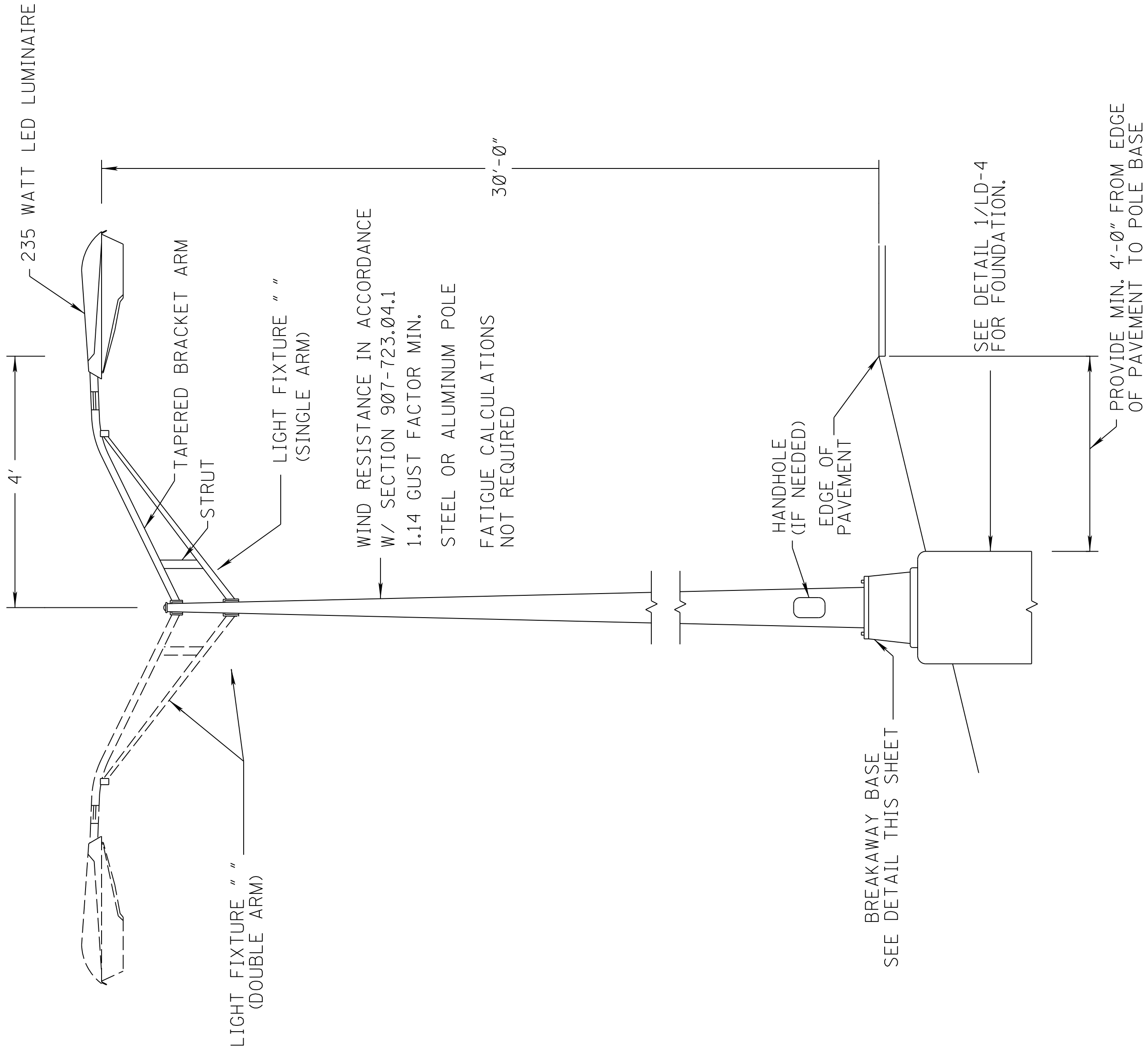
DATE	REVISION	BY
10/16/15	LIGHTING REVISIONS	DFS

DESIGN TEAM: WK-L-1-sh.dgn
CHECKED: _____
DATE: _____

PROJECT NO.: HSIP-0054-01(055)
COUNTY: COPIAH

WORKING NUMBER: L-1
SHEET NUMBER: 4001

ADDENDUM



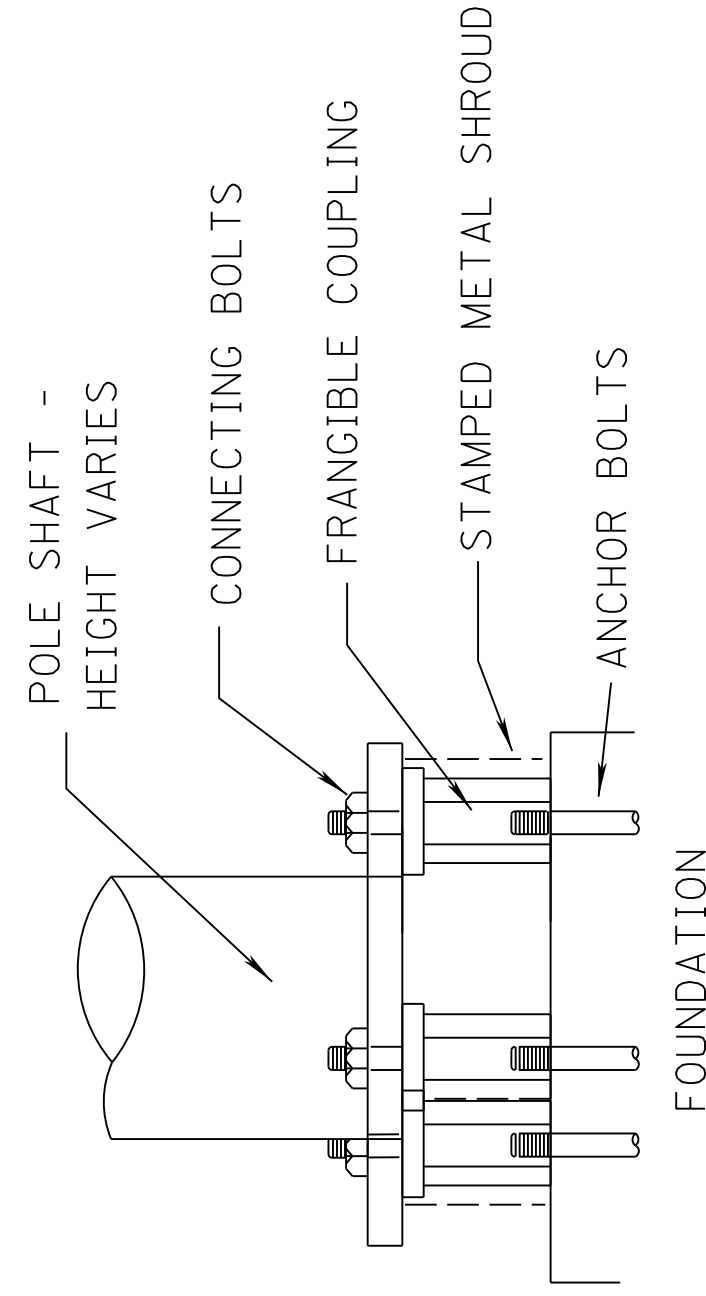
2 LD-2 TYPICAL LOWMAST LIGHTING ASSEMBLY DETAIL

N.T.S.

3 LD-2 TYPICAL BREAKAWAY BASES

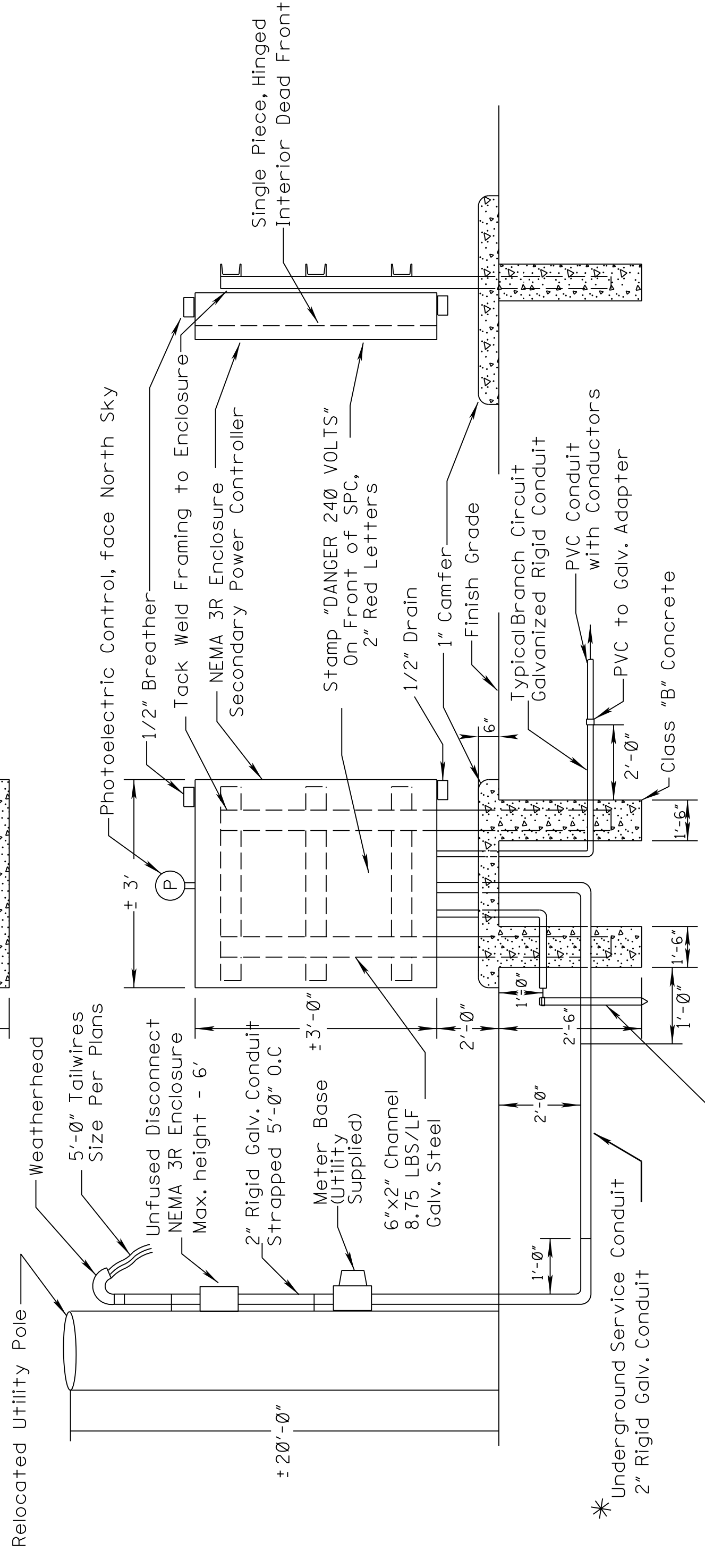
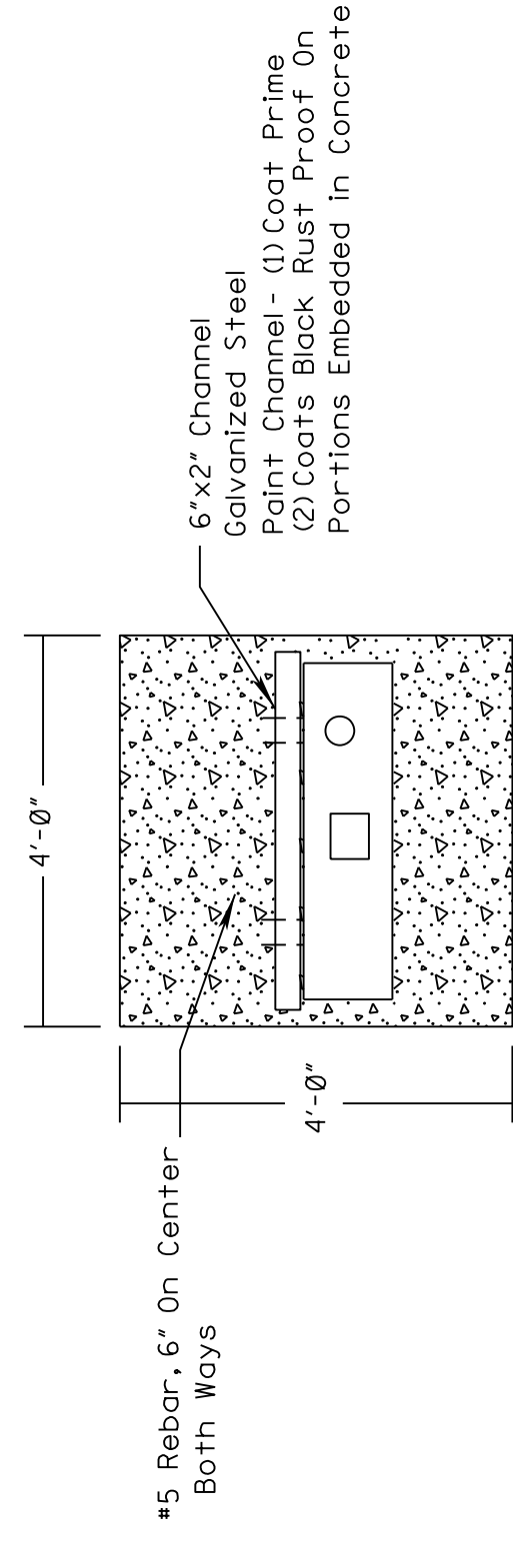
N.T.S.

- KEEPER PLATE IS FABRICATED FROM #28 GAUGE GALVANIZED SHEET STEEL. ONE (1) FURNISHED WITH EACH POLE EQUIPPED WITH SLIP BASE.
- SLIP ANCHOR PLATE IS FABRICATED FROM STEEL PLATE CONFORMING TO ASTM A-36 WITH MINIMUM YIELD STRENGTH OF 36 KSI. ONE (1) SLIP ANCHOR PLATE IS FURNISHED WITH EACH SLIP BASE EQUIPPED POLE.
- BREAKWAY DEVICES MUST MEET THE REQUIREMENTS OF THE 2001 AASHTO STANDARD SPECIFICATIONS OF STRUCTURAL SUPPORTS FOR HIGHWAY SIGNS, LUMINAIRES AND TRAFFIC SIGNALS.
- CONTRACTOR SHALL LIMIT THE AMOUNT OF WIRE USED IN THE BREAKAWAY BASE DEVICE SO THAT THE CIRCUIT WILL ELECTRICALLY DISCONNECT AS CLOSE AS POSSIBLE TO THE TOP OF THE FOUNDATION WHEN STRUCK BY AN ERRANT VEHICLE.



TYPICAL FRANGIBLE COUPLING

TOP VIEW



FRONT VIEW

SIDE VIEW

1 LD-2 TYPICAL SECONDARY POWER CONTROLLER DETAIL

N.T.S.

- * This Underground Service Circuit is to be included in the cost of the Secondary Power Controller unless noted otherwise on the plans. Long runs of Underground Service Conduit shall be paid for as Underground Branch Circuit.

DATE	BY	REVISION
10/16/15	DFS	ADDED SHEET TO PLANS

MISSISSIPPI DEPARTMENT OF TRANSPORTATION
LIGHTING DETAILS
SR 27 AT LEE AVENUE

PROJ. NO.: HSIP-0054-01(055)
 COUNTY: COPIAH

WORKING NUMBER
 LD-2

SHEET NUMBER
 4003

FILENAME: LD2.dgn
 DESIGN TEAM PICKERING CHECKED DFS DATE