

SECTION 905 -- PROPOSAL (CONTINUED)

I (We) hereby certify by digital signature and electronic submission via Bid Express of the Section 905 proposal below, that all certifications, disclosures and affidavits incorporated herein are deemed to be duly executed in the aggregate, fully enforceable and binding upon delivery of the bid proposal. I (We) further acknowledge that this certification shall not extend to the bid bond or alternate security which must be separately executed for the benefit of the Commission. This signature does not cure deficiencies in any required certifications, disclosures and/or affidavits. I (We) also acknowledge the right of the Commission to require full and final execution on any certification, disclosure or affidavit contained in the proposal at the Commission's election upon award. Failure to so execute at the Commission's request within the time allowed in the Standard Specifications for execution of all contract documents will result in forfeiture of the bid bond or alternate security.

Bidder acknowledges receipt of and has added to and made a part of the proposal and contract documents the following addendum (addenda):

ADDENDUM NO. 1 DATED 2/18/2016 ADDENDUM NO. DATED
 ADDENDUM NO. 2 DATED 2/18/2016 ADDENDUM NO. DATED

Number	Description
1	Revised Table of Contents; Revised NTB Nos. 5972, 5974, & 5975; Add NTB No. 6134; Amendment EBS Download Required.
2	Revised Table of Contents; Add SP No. 907-618-14 with Supplement; Revised Bid Items; Amendment EBS Download Required.

TOTAL ADDENDA: 2
 (Must agree with total addenda issued prior to opening of bids)

Respectfully Submitted,

DATE _____

 Contractor

BY _____
 Signature

TITLE _____

ADDRESS _____

CITY, STATE, ZIP _____

PHONE _____

FAX _____

E-MAIL _____

(To be filled in if a corporation)

Our corporation is chartered under the Laws of the State of _____ and the names, titles and business addresses of the executives are as follows:

 President Address

 Secretary Address

 Treasurer Address

The following is my (our) itemized proposal.

IM-0020-01(202)/105923301

Warren County(ies)

Revised 01/26/2016

**MISSISSIPPI DEPARTMENT OF TRANSPORTATION
TABLE OF CONTENTS**

PROJECT: IM-0020-01(202)/105923301 - Warren

Section 901 - Advertisement

Section 904 - Notice to Bidders

#1	Governing Specifications
#3	Final Cleanup
#640	Fiber Reinforced Concrete
#927	Use of Fly Ash in Stone Matrix Asphalt (SMA)
#1405	Errata & Modifications to 2004 Standard Specifications
#1928	Federal Bridge Formula
#2382	Status of ROW, w/ Attachments
#3131	Temporary Traffic Paint
#3893	Petroleum Products Base Price
#4189	Rumble Stripe
#4214	Safety Apparel
#4526	Electronic Addendum Process
#4565	Manual on Uniform Traffic Control Devices (MUTCD)
#5044	Questions Regarding Bidding
#5053	Contractor Correspondence
#5080	Standard Drawings
#5266	Disadvantaged Business Enterprise, w/ Supplement
#5405	Traffic Control Devices
#5411	Safety Edge
#5412	Weight Limits
#5556	DUNS Requirement for Federal Funded Projects
#5824	Adjustments for Bituminous Materials
#5865	Non-Quality Control / Quality Assurance Concrete
#5866	Payroll Requirements
#5896	DBE Forms, Participation and Payment
#5972	Contract Time
#5973	Specialty Items
#5974	Scope of Work
#5975	Lane Closure Restrictions
#6134	Assessment of Contract Time
906	Required Federal Contract Provisions -- FHWA 1273, w/Supplements

Section 907 - Special Provisions

907-101-4	Definitions
907-102-12	Bidding Requirements and Conditions
907-103-11	Award and Execution
907-104-5	Scope of Work
907-104-6	Partnering Process
907-105-8	Control of Work
907-107-13	Legal Relations and Responsibility to Public, w/Supplement

PROJECT: IM-0020-01(202)/105923301 - Warren

907-108-37	Prosecution and Progress, w/ Supplement
907-109-8	Measurement and Payment
907-110-2	Wage Rates
907-304-13	Granular Courses
907-401-5	Stone Matrix Asphalt (SMA), w/ Supplement
907-401-7	Asphalt Pavements
907-403-13	Stone Matrix Asphalt (SMA), w/ Supplement
907-403-14	Asphalt Pavements
907-406-4	Cold Milling
907-407-2	Tack Coat
907-413-5	Sawing & Sealing Transverse Joints in Asphalt Pavement
907-501-6	Portland Cement Concrete Pavement
907-618-9	Placement of Temporary Traffic Stripe
907-618-13	Temporary Construction Signs
907-618-14	Additional Signing Requirements, w/ Supplement
907-619-5	Changeable Message Signs
907-626-5	Inverted Profile Thermoplastic Traffic Stripe
907-626-25	Thermoplastic Traffic Markings
907-701-5	Hydraulic Cement, w/ Supplement
907-702-5	Specifications for Bituminous Materials
907-703-12	Aggregates, w/ Supplement
907-710-1	Fast Dry Solvent Traffic Paint
907-711-4	Synthetic Structural Fiber Reinforcement
907-713-5	Admixtures for Concrete
907-714-3	Stabilizing Fibers
907-714-8	Miscellaneous Materials
907-720-2	Pavement Marking Materials
907-804-19	Concrete Bridges and Structures

Section 905 - Proposal, Proposal Bid Items, Combination Bid Proposal
Certification of Performance - Prior Federal-Aid Contracts
Certification Regarding Non-Collusion, Debarment and Suspension
SAM.GOV Registration and DUNS Number
Section 902 - Contract Form
Section 903 - Contract Bond Forms
Form -- OCR-485

(REVISIONS TO THE ABOVE WILL BE INDICATED ON THE SECOND SHEET
OF SECTION 905 AS ADDENDA)

02/18/2016 03:48 PM

MISSISSIPPI DEPARTMENT OF TRANSPORTATION

| SPECIAL PROVISION NO. 907-618-14

CODE: (SP)

| DATE: 06/17/2014

SUBJECT: Additional Signing Requirements

Section 618, Maintenance of Traffic and Traffic Control Plan, of the 2004 Edition of the Mississippi Standard Specifications for Road and Bridge Construction is hereby amended as follows.

907-618.01.2--Traffic Control Plan. At the end of Subsection 618.01.2 on page 413, add the following:

For compliance with the traffic control plan, the Contractor will be required to install and maintain construction signs at various locations throughout the project. Payment for these signs will be included in the price bid for pay item no. 907-618-A, Maintenance of Traffic per lump sum.

MISSISSIPPI DEPARTMENT OF TRANSPORTATION

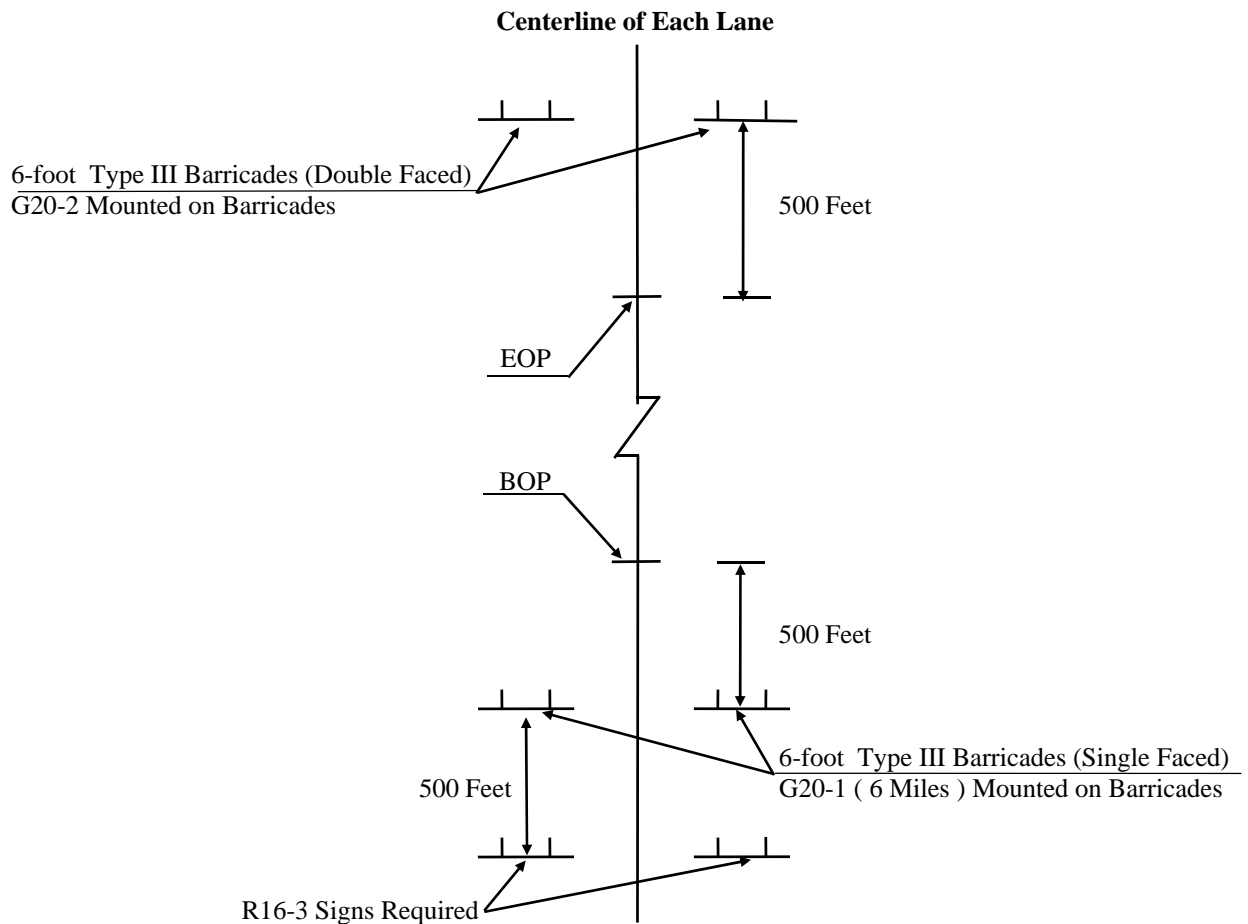
SUPPLEMENT TO SPECIAL PROVISION NO. 907-618-14

DATE: 2/18/2016

PROJECT: IM-0020-01(202) / 105923301 – Warren County

After the first paragraph of Subsection 907-618.01.2 on page 1, add the following.

Additional signs will be required as follows.

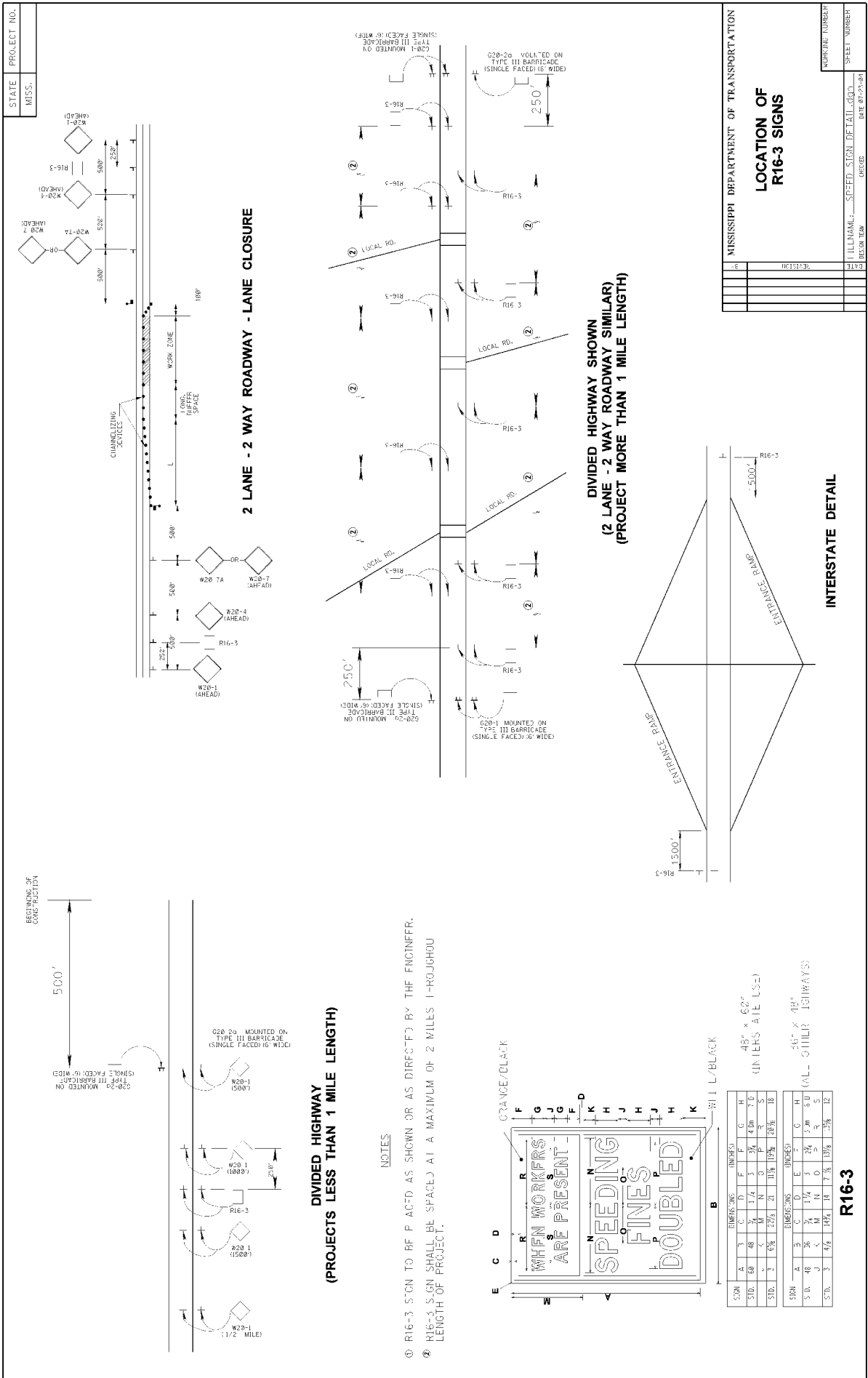


ADDITIONAL TRAFFIC CONTROL SIGNS REQUIRED:

- 8 - W20-1 "AHEAD" signs required. One (1) sign is required at each local road or street entering the project.
- 12 - R16-3 "SPEEDING FINES DOUBLED" signs required.

R16-3 signs shall be spaced in accordance with sheet titled "Location of R16-3 Signs".

All Construction signing is included in the bid for Pay Item 907-618-A, Maintenance of Traffic. Fluorescent orange sheeting shall be used on all construction and traffic control signs except for R16-3 which shall be black legend and border on white background.



STATE	MISS.	PROJECT NO.	
REVISIONS			
NO.	DESCRIPTION	DATE	BY
1	ISSUED		
2			
3			
4			
5			
6			
7			
8			
9			
10			

LOCATION OF R16-3 SIGNS

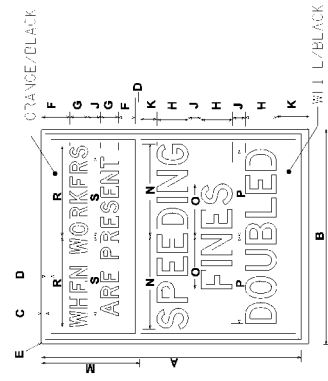
INTERSTATE DETAIL

**DIVIDED HIGHWAY SHOWN
(2 LANE - 2 WAY ROADWAY SIMILAR)
(PROJECT MORE THAN 1 MILE LENGTH)**

**DIVIDED HIGHWAY
(PROJECTS LESS THAN 1 MILE LENGTH)**

NOTES

- ① R16-3 SIGN TO BE PLACED AS SHOWN OR AS DIRECTED BY THE ENGINEER.
- ② R16-3 SIGN SHALL BE SPACED AT A MAXIMUM OF 2 MILES THROUGHOUT LENGTH OF PROJECT.



CON.	A	B	C	D	E	F	G	H
STD.	3	7.75	48	4	3	3.75	4	4
S.D.	3	6.75	48	4	3	3.75	4	4

R16-3

CON.	A	B	C	D	E	F	G	H
STD.	3	7.75	48	4	3	3.75	4	4
S.D.	3	6.75	48	4	3	3.75	4	4

48" x 62" (IN CHARS ARE U.S.)

56" x 48" (ALL OTHER CHARACTERS)

DIMENSIONS		DIMENSIONS	
S.D.	3	A	4
S.D.	3	B	7.75
S.D.	3	C	48
S.D.	3	D	4
S.D.	3	E	3
S.D.	3	F	3.75
S.D.	3	G	4
S.D.	3	H	4

MISSISSIPPI DEPARTMENT OF TRANSPORTATION

Mill & Overlay approximately 6 miles of I-20 from RR Bridge near Washington Street Mile Marker 6 East of Clay Street, known as Federal Aid Project No. IM-0020-01(202) / 105923301 in Warren County.

Line No.	Item Code	Adj Code	Quantity	Units	Description [Fixed Unit Price]
Roadway Items					
0010	202-B030		896	Square Yard	Removal of Concrete Pavement, All Depths
0020	202-B087		12,436	Linear Feet	Removal of Guard Rail, Including Rails, Posts and Terminal Ends
0030	423-A001		19	Mile	Rumble Strips, Ground In
0040	503-B001		672	Linear Feet	Saw Cut, Longitudinal Joints
0050	503-C002		936	Linear Feet	Saw Cut, 3-inch
0060	503-C003		408	Linear Feet	Saw Cut, 6-inch
0070	503-C005		936	Linear Feet	Saw Cut, 8-inch
0080	503-C009		408	Linear Feet	Saw Cut, 2-inch
0090	503-D001		5	Cubic Yard	Concrete for Base Repair
0100	503-E002		336	Each	Tie Bars, No. 5 Deformed Drilled and Epoxied or Grouted
0110	606-B001		10,238	Linear Feet	Guard Rail, Class A, Type 1
0120	606-B008		225	Linear Feet	Guard Rail, Class A, Type 1, Thrie Beam
0130	606-B017		4	Each	Guard Rail, Class A, Type 1, Thrie Beam, Transition Section
0140	606-C003		17	Each	Guard Rail, Cable Anchor, Type 1
0150	606-D003		6	Each	Guard Rail, Bridge End Section, Type D Modified
0160	606-D011		12	Each	Guard Rail, Bridge End Section, Type A Modified
0170	606-E002		34	Each	Guard Rail, Terminal End Section, Flared
0180	606-E003		1	Each	Guard Rail, Terminal End Section, Non-Flared
0190	619-A1003		80,000	Linear Feet	Temporary Traffic Stripe, Continuous White, Paint
0200	619-A2004		22	Mile	Temporary Traffic Stripe, Continuous Yellow, Paint
0210	619-A3007		21	Mile	Temporary Traffic Stripe, Skip White, Paint
0220	620-A001		1	Lump Sum	Mobilization
0230	627-K001		1,217	Each	Red-Clear Reflective High Performance Raised Markers
0240	630-F001		165	Each	Delineators, Guard Rail, White
0250	630-F002		149	Each	Delineators, Guard Rail, Yellow
0260	630-G002		18	Each	Type 3 Object Markers, OM-3R or OM-3L, Post Mounted
0270	907-304-B002	(GT)	5,000	Ton	Granular Material, Class 5, Group D
0280	907-403-A017	(BA1)	4,374	Ton	9.5-mm, ST, Asphalt Pavement
0290	907-403-A018	(BA1)	4,000	Ton	12.5-mm, ST, Asphalt Pavement
0300	907-403-A028	(BA1)	650	Ton	12.5-mm, HT, Asphalt Pavement
0310	907-403-AA001	(BA1)	17,225	Ton	Stone Matrix Asphalt, 9.5 mm Mixture
0320	907-403-AA002	(BA1)	15,272	Ton	Stone Matrix Asphalt, 12.5 mm Mixture

Line No.	Item Code	Adj Code	Quantity	Units	Description [Fixed Unit Price]
0330	907-403-S004		20	Mile	Joint Sealant
0340	907-406-A001		3,734	Square Yard	Cold Milling of Bituminous Pavement, All Depths
0350	907-406-A003		16,000	Ton	Cold Milling of Bituminous Pavement, All Depths
0360	907-407-A001	(A2)	14,000	Gallon	Asphalt for Tack Coat
0370	907-413-E001		2,640	Linear Feet	Sawing and Sealing Transverse Joints in Asphalt Pavement
0380	907-501-A001	(C)	624	Square Yard	8" Reinforced Cement Concrete Pavement, Broom Finish
0390	907-501-A002	(C)	272	Square Yard	6" Reinforced Cement Concrete Pavement, Broom Finish
0400	907-618-A001		1	Lump Sum	Maintenance of Traffic
0402	907-618-B001		1	Square Feet	Additional Construction Signs [\$10.00]
0410	907-619-E3001		6	Each	Changeable Message Sign
0420	907-626-A005		10	Mile	6" Thermoplastic Double Drop Traffic Stripe, Skip White
0430	907-626-C007		43,205	Linear Feet	6" Thermoplastic Double Drop Edge Stripe, Continuous White
0440	907-626-F003		11	Mile	6" Thermoplastic Double Drop Edge Stripe, Continuous Yellow
0450	907-626-G006		22,006	Linear Feet	Thermoplastic Double Drop Detail Stripe, White
0460	907-626-G007		2,581	Linear Feet	Thermoplastic Double Drop Detail Stripe, Yellow
ALTERNATE GROUP AA NUMBER 1					
0470	628-I002		2,350	Linear Feet	6" High Performance Cold Plastic Traffic Stripe, Skip White
0480	628-J002		2,350	Linear Feet	6" High Performance Cold Plastic Traffic Stripe, Continuous White
0490	628-M002		2,350	Linear Feet	6" High Performance Cold Plastic Traffic Stripe, Continuous Yellow
ALTERNATE GROUP AA NUMBER 2					
0500	907-626-I003		2,350	Linear Feet	6" Inverted Profile Thermoplastic Traffic Stripe, Skip White
0510	907-626-J003		2,350	Linear Feet	6" Inverted Profile Thermoplastic Traffic Stripe, Continuous White
0520	907-626-L001		2,350	Linear Feet	6" Inverted Profile Thermoplastic Traffic Stripe, Continuous Yellow