

SECTION 905 -- PROPOSAL (CONTINUED)

I (We) hereby certify by digital signature and electronic submission via Bid Express of the Section 905 proposal below, that all certifications, disclosures and affidavits incorporated herein are deemed to be duly executed in the aggregate, fully enforceable and binding upon delivery of the bid proposal. I (We) further acknowledge that this certification shall not extend to the bid bond or alternate security which must be separately executed for the benefit of the Commission. This signature does not cure deficiencies in any required certifications, disclosures and/or affidavits. I (We) also acknowledge the right of the Commission to require full and final execution on any certification, disclosure or affidavit contained in the proposal at the Commission's election upon award. Failure to so execute at the Commission's request within the time allowed in the Standard Specifications for execution of all contract documents will result in forfeiture of the bid bond or alternate security.

Bidder acknowledges receipt of and has added to and made a part of the proposal and contract documents the following addendum (addenda):

ADDENDUM NO. 1 DATED 10/19/2016 ADDENDUM NO. DATED
 ADDENDUM NO. DATED ADDENDUM NO. DATED

Number	Description
1	Revised Table of Contents; Add NTB No. 6725; Revised Bid Items; Revised or Added Plan Sheet Nos. 1-2, 6-7, 4001, & 4007-4008; Amendment EBS Download Required.

TOTAL ADDENDA: 1
 (Must agree with total addenda issued prior to opening of bids)

Respectfully Submitted,

DATE _____

 Contractor

BY _____
 Signature

TITLE _____

ADDRESS _____

CITY, STATE, ZIP _____

PHONE _____

FAX _____

E-MAIL _____

(To be filled in if a corporation)

Our corporation is chartered under the Laws of the State of _____ and the names, titles and business addresses of the executives are as follows:

 President Address

 Secretary Address

 Treasurer Address

The following is my (our) itemized proposal.

HSIP-0099-01(009)/ 107175301000

Washington County(ies)

**MISSISSIPPI DEPARTMENT OF TRANSPORTATION
TABLE OF CONTENTS**

PROJECT: HSIP-0099-01(009)/107175301 - Washington

Section 901 - Advertisement

Section 904 - Notice to Bidders

#1	Governing Specifications
#3	Final Cleanup
#640	Fiber Reinforced Concrete
#1405	Errata & Modifications to 2004 Standard Specifications
#1928	Federal Bridge Formula
#2382	Status of ROW, w/ Attachments
#3893	Petroleum Products Base Price
#4214	Safety Apparel
#4526	Electronic Addendum Process
#4565	Manual on Uniform Traffic Control Devices (MUTCD)
#5044	Questions Regarding Bidding
#5053	Contractor Correspondence
#5405	Traffic Control Devices
#5412	Weight Limits
#5545	Burn-in Period
#5556	DUNS Requirement for Federal Funded Projects
#5824	Adjustments for Bituminous Materials
#5865	Non-Quality Control / Quality Assurance Concrete
#5866	Payroll Requirements
#5896	DBE Forms, Participation and Payment
#6411	Disadvantaged Business Enterprise, w/ Supplement
#6660	Contract Time
#6661	Speicalty Items
#6723	Lane Closure Restrictions
#6725	Lighting Fixtures
906	Required Federal Contract Provisions -- FHWA 1273, w/Supplements

Section 907 - Special Provisions

907-101-4	Definitions
907-102-12	Bidding Requirements and Conditions
907-103-11	Award and Execution
907-104-5	Scope of Work
907-104-6	Partnering Process
907-105-9	Control of Work, w/ Supplement
907-107-13	Legal Relations and Responsibility to Public, w/ Supplement
907-108-38	Prosecution and Progress
907-109-8	Measurement and Payment
907-110-2	Wage Rates
907-216-1	Solid Sodding
907-237-4	Wattles

PROJECT: HSIP-0099-01(009)/107175301 - Washington

907-245-2	Triangular Silt Dikes
907-246-3	Sandbags & Rockbags
907-249-1	Riprap for Erosion Control
907-601-1	Structural Concrete
907-618-13	Temporary Construction Signs
907-681-2	Submittal Data
907-682-13	Roadway Lighting System
907-683-12	Light Emitting Diode (LED) Luminaires
907-699-5	Construction Stakes
907-701-5	Hydraulic Cement, w/ Supplement
907-711-4	Synthetic Structural Fiber Reinforcement
907-713-6	Admixtures for Concrete
907-714-8	Miscellaneous Materials
907-723-2	Light Emitting Diode (LED) Luminaires
907-804-19	Concrete Bridges and Structures, w/ Supplement

Section 905 - Proposal, Proposal Bid Items, Combination Bid Proposal
Certification of Performance - Prior Federal-Aid Contracts
Certification Regarding Non-Collusion, Debarment and Suspension
SAM.GOV Registration and DUNS Number
Section 902 - Contract Form
Section 903 - Contract Bond Forms
Form -- OCR-485

(REVISIONS TO THE ABOVE WILL BE INDICATED ON THE SECOND SHEET
OF SECTION 905 AS ADDENDA)

10/19/2016 09:57 AM

MISSISSIPPI DEPARTMENT OF TRANSPORTATION

SECTION 904 - NOTICE TO BIDDERS NO. 6725

CODE: (SP)

DATE: 10/19/2016

SUBJECT: Lighting Fixtures

PROJECT: HSIP-0099-01(009) / 107175301 – Washington County

The following roadway lighting fixtures are pre-approved for use on this project:

Type A

Acuity/American Electric Lighting

Autobahn Series ATB2:

ATB2 80BLEDE70 MVOLT R2 NL P7 SH

Autobahn Series ATBM:

ATBM H MVOLT R2 4B NL P7 SH

Eaton/Cooper

Navion NVN:

NVN AE 04 E U T2R 10K AP

Philips/Lumec

Roadview LED Series RVM:

RVM-215W128LED4K-R-LE2 UNIV-API-RC-GY3

Type B

Acuity/American Electric Lighting

Autobahn Series ATB2:

ATB2 80BLEDE10 MVOLT R3 NL P7 SH

Eaton/Cooper

Navion NVN:

NVN AE 06 E U T3R 10K AP

Philips/Lumec

Roadview LED Series RVM:

RVM-245W144LED4K-R-LE3 UNIV-API-RC-GY3

If the Contractor chooses to utilize a fixture not listed above, it must be submitted for approval through the Project Engineer and shall meet the requirements as outlined in the plans and contract documents.

Lighting Installation on US 82 from MS River Bridge to SR 454, known as Federal Aid Project No. HSIP-0099-01(009) / 107175301 in Washington County.

Line No.	Item Code	Adj Code	Quantity	Units	Description [Fixed Unit Price]
Roadway Items					
0010	219-A001		4	Thousand Gallon	Watering [\$20.00]
0020	234-A001		7,200	Linear Feet	Temporary Silt Fence
0030	235-A001		96	Bale	Temporary Erosion Checks
0040	619-D1001		66	Square Feet	Standard Roadside Construction Signs, Less than 10 Square Feet
0050	619-D2001		260	Square Feet	Standard Roadside Construction Signs, 10 Square Feet or More
0060	619-G4001		30	Linear Feet	Barricades, Type III, Single Faced
0070	619-G7001		2	Each	Warning Lights, Type "B"
0080	620-A001		1	Lump Sum	Mobilization
0090	682-A037		7,122	Linear Feet	Underground Branch Circuit, AWG 8, 4 Conductor
0100	682-A041		175	Linear Feet	Underground Branch Circuit, AWG 1, 4 Conductor
0110	682-B037		322	Linear Feet	Underground Branch Circuit, Jacked or Bored, AWG 8, 4 Conductor
0120	682-E001		4	Each	Underground Junction Box
0130	682-F001		2	Each	Secondary Power Controllers
0140	684-A007		115	Cubic Yard	Pole Foundation, 30" Diameter
0150	684-B007		26	Linear Feet	Slip Casing, 30" Diameter
0160	907-216-A001		168	Square Yard	Solid Sodding
0170	907-237-A003		16	Linear Feet	Wattles, 20"
0180	907-245-A001		16	Linear Feet	Triangular Silt Dike
0190	907-246-B002		16	Each	Rockbags
0200	907-249-A001		16	Ton	Riprap for Erosion Control
0210	907-618-A001		1	Lump Sum	Maintenance of Traffic
0220	907-682-E001		42	Each	Underground Junction Box With Concrete Pad
0230	907-683-B018		8	Each	Lighting Assembly, Low Mast, LED, Type 40-1-15-315
0240	907-683-B023		34	Each	Lighting Assembly, Low Mast, LED, Type 40-1-8-213
0250	907-699-A002		1	Lump Sum	Roadway Construction Stakes

STATE	PROJECT NUMBER	SHEET NO.
MISSISSIPPI	HSIP-0099-01(009)	1

STATE OF MISSISSIPPI

MISSISSIPPI DEPARTMENT OF TRANSPORTATION

PLAN AND PROFILE OF PROPOSED STATE HIGHWAY FEDERAL AID PROJECT NO. HSIP-0099-01(009)

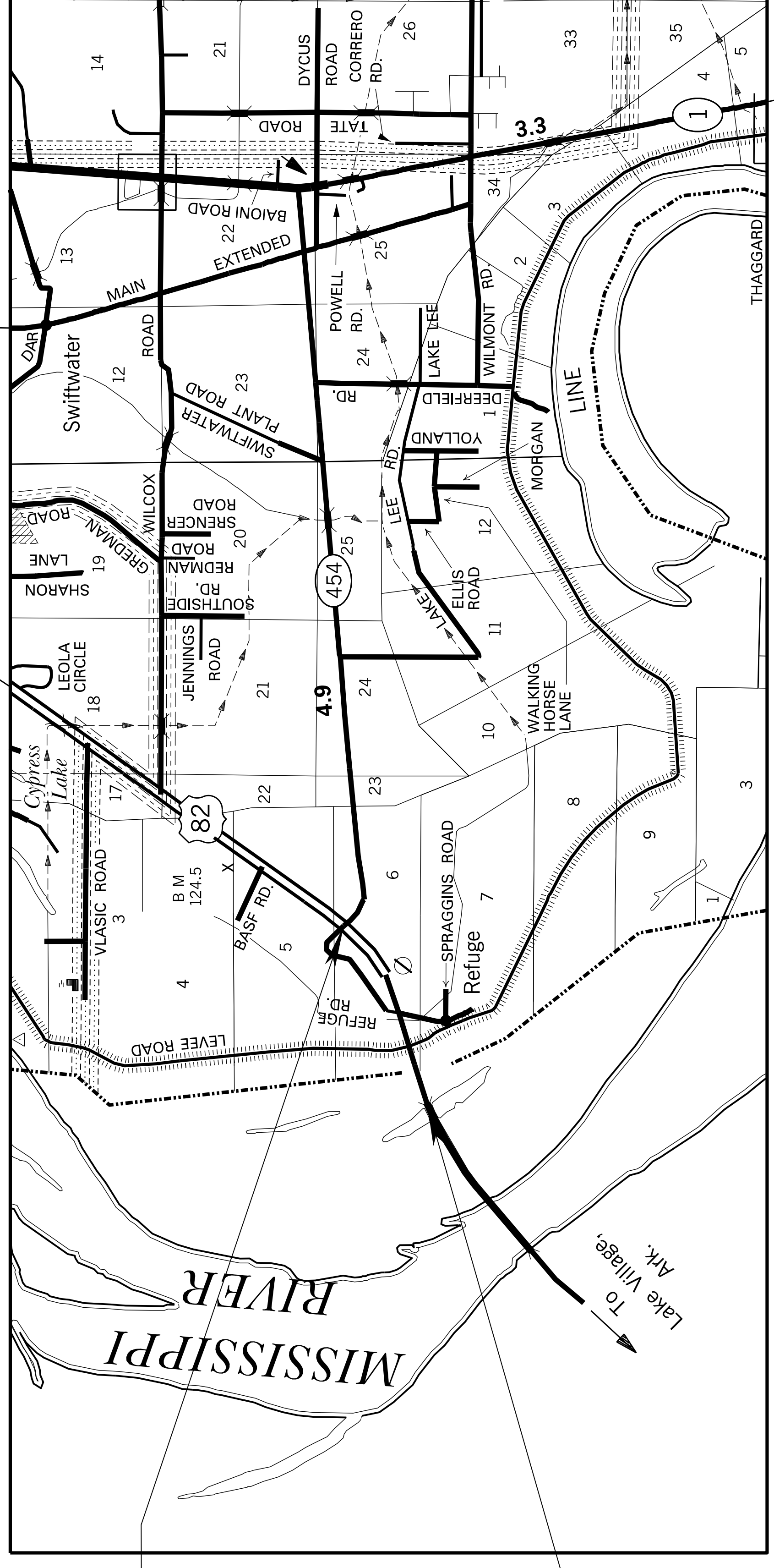
US 82 FROM MS RIVER BRIDGE TO SR 454 WASHINGTON COUNTY

FMS. CONST. NO. 107175301000

GENERAL INDEX	
INCLUDED THIS PROJECT	BEGIN WITH SHEET
<input checked="" type="checkbox"/> ROADWAY	1
<input type="checkbox"/> PERMANENT SIGNS	1001
<input type="checkbox"/> TRAFFIC SIGNALS	2001
<input type="checkbox"/> ITS COMPONENTS	3001
<input checked="" type="checkbox"/> LIGHTING	4001
<input type="checkbox"/> (RESERVED)	5001
<input checked="" type="checkbox"/> ROADWAY STANDARD DWGS	6001
<input type="checkbox"/> BRIDGE STANDARD DWGS	7001
<input type="checkbox"/> BRIDGE	8001
<input type="checkbox"/> CROSS SECTIONS	9001

SCALES

PLAN	1 IN. = 100 FT.
PROFILE	1 IN. = 100 FT.
LAYOUT	1 IN. = 10 FT.
	1 IN. = 3000 FT.



END OF PROJECT STA 119+00

BEGINNING OF PROJECT STA 75+00

GPS CONTROL NOTES

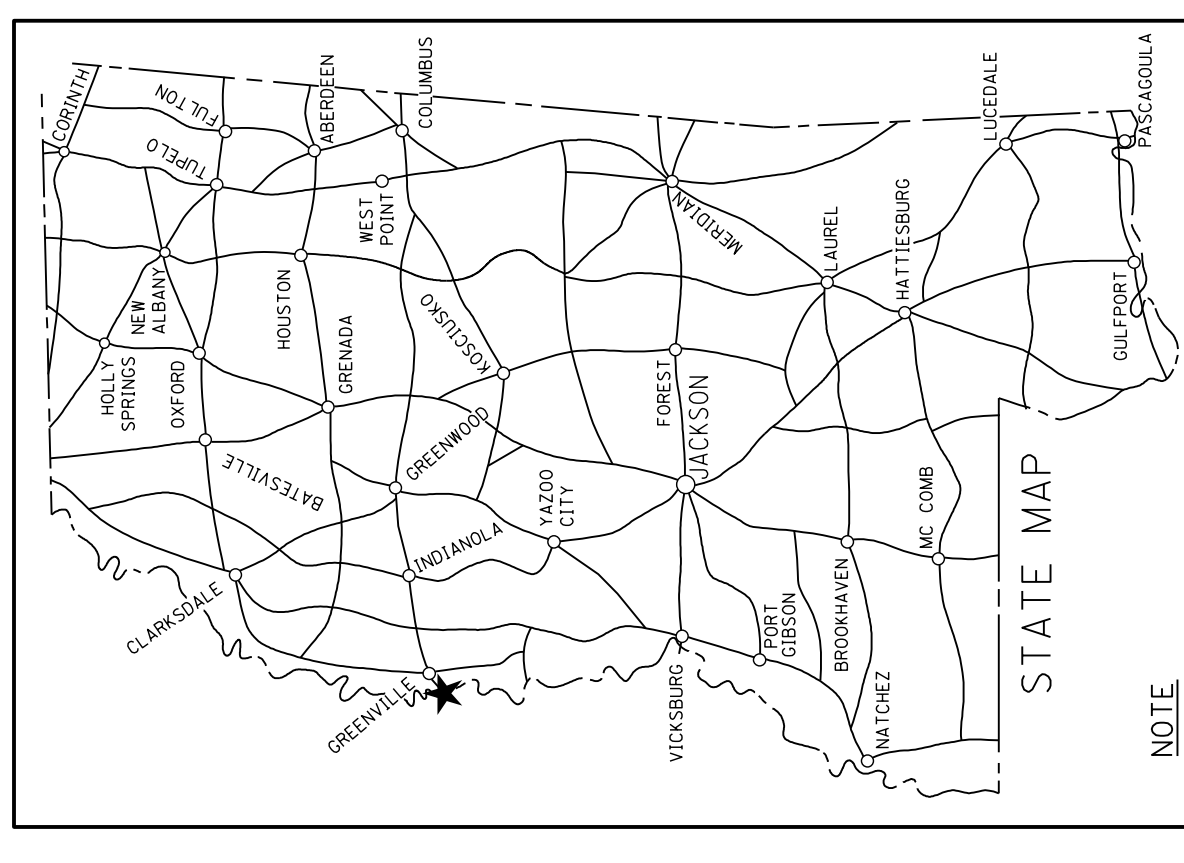
HORIZONTAL DATUM: NAD 83(1997)	MS WEST ZONE (US SURVEY FEET)	EAST
HORIZONTAL MONUMENT	NORTH	2056249.655
103 1998	1386877.310	
VERTICAL DATUM: NAVD 88	(US SURVEY FEET)	ELEVATION
VERTICAL MONUMENT		123.235
103 1998		

ALL AZIMUTHS AND DISTANCES ARE GRID VALUES, US SURVEY FEET

CONVERSION VALUES	PROJECT AVERAGE
GROUND TO GRID (COMBINED) FACTOR	1.000010240
GRID TO GEODETIC AZIMUTH	-00.25-55.128

LENGTH DATA

LENGTH OF ROADWAY	4400	FT.	0.833	MI.
LENGTH OF BRIDGES	4400	FT.	0.833	MI.
LENGTH OF PROJECT (NET)	4400	FT.	0.833	MI.
LENGTH OF EXCEPTIONS				
LENGTH OF PROJECT (GROSS)	4400	FT.	0.833	MI.



NOTE
INDICATES APPROXIMATE LOCATION OF PROJECT.
LAT. 33°18'24" N LONG. 91°07'44" W
(APPROX. MIDDLE OF PROJECT)

DESIGN CONTROL	
45 MPH = V (SPEED DESIGN)	
ADT (NA) = NA ; ADT (LA) = NA	
DHV = NA ; D = NA % ; T = NA %	
PERMITS ACQUIRED BY MDTOT	
WETLANDS AND WATERS PERMITS (NECESSARY FOR ULTIMATE IMPROVEMENTS ONLY):	
WATERS	N
WETLANDS	N
NATIONWIDE #14	N
NATIONWIDE (OTHER)*	N
GENERAL*	N
INDIVIDUAL (404)*	N
* ACQUISITION OF PERMITS FOR TEMPORARY IMPACTS DURING CONSTRUCTION ARE THE RESPONSIBILITY OF THE CONTRACTOR	
STORMWATER PERMIT	N
Y	REQUIRED (NOI SUBMITTED BY MDTOT (DISTURBED AREA = 5 ACRES))
S	REQUIRED (NOI TO BE SUBMITTED BY CONTRACTOR (1 TO 0.58 ACRES))
N	NO STORMWATER PERMIT REQUIRED (<1 ACRE)
APPROVED BY:	

APPROVED:	P S & E DATE: 08-10-2016
DEPUTY EXECUTIVE DIRECTOR / CHIEF ENGINEER	
EXECUTIVE DIRECTOR	



ADDENDUM

FMS CON: 107175/301000

STATE	PROJECT NO.
MISS.	HSIP-0099-01(009)

WKG. NO. SH. NO.

REVISIONS

DESCRIPTION OF SHEET

REVISIONS

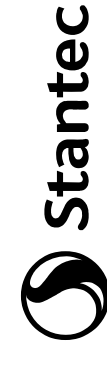
DESCRIPTION OF SHEET

1		TITLE SHEET (1)			
2	DI-1	DETAILED INDEX & GENERAL NOTES (3)			
3	GN-1	DETAILED INDEX			
4	GN-2	GENERAL NOTES - LIGHTING NOTES, LEGEND AND ABBREVIATIONS			
5	TS-1	TYPICAL SECTIONS (1)			
6	SQ-1	SUMMARY OF QUANTITIES (1)			
7	EQ-1	ESTIMATED QUANTITIES (2)			
8	EQ-2	ESTIMATED QUANTITIES - LIGHTING ITEMS			
9	DCS-1	ESTIMATED QUANTITIES FOR TRAFFIC CONTROL SIGNS			
10	ECD-1	DETAIL OF CONSTRUCTION SIGNING (1)			
11	ECD-2	EROSION CONTROL DETAILS (22)			
12	ECD-3	TYPICAL TEMPORARY EROSION/SILT SEDIMENT CONTROL APPLICATION			
13	ECD-4	DETAILS OF SEDIMENT BARRIER APPLICATIONS			
14	ECD-5	DETAILS OF SILT FENCE INSTALLATION			
15	ECD-6	DITCH CHECK STRUCTURES, TYPICAL APPLICATIONS AND DETAILS			
16	ECD-7	TEMPORARY EROSION SEDIMENT AND WATER POLLUTION CONTROL SILT FENCE AND HAY BALE DITCH CHECKS			
17	ECD-8	DETAILS OF EROSION CONTROL WATTLE DITCH CHECKS			
18	ECD-9	DETAILS OF EROSION CONTROL SILT DIKE DITCH CHECK			
19	ECD-10	ROCK DITCH CHECK			
20	ECD-11	ROCK FILTER DAM			
21	ECD-12	ROCK DITCH CHECK WITH SUMP EXCAVATION AND ROCK FILTER DAM			
22	ECD-13	INLET PROTECTION TYPICAL APPLICATIONS AND DETAILS			
23	ECD-14	INLET PROTECTION DETAILS FOR COARSE AGGREGATE ON GRADES & SAGS			
24	ECD-15	INLET PROTECTION DETAILS OF WATTLES			
25	ECD-16	INLET PROTECTION DETAILS OF MANUFACTURED INLET PROTECTION DEVICE			
26	ECD-17	INLET PROTECTION DETAILS OF SAND BAG			
27	ECD-18	STABILIZED CONSTRUCTION ENTRANCE			
28	ECD-19	TEMPORARY CULVERT STREAM CROSSING			
29	ECD-20	TEMPORARY STREAM DIVERSION			
30	ECD-21	TEMPORARY STREAM DIVERSION (BOX EXTENSIONS)			
31	ECD-22	FLOATING TURBIDITY CURTAIN			
32	DT-1	DETAILS OF EROSION CONTROL SANDBAG DITCH CHECK			
33	EC-1	SEDIMENT RETENTION BARRIER			
34	R16-3	SPECIAL DESIGN SHEETS (9)			
35	SDTCP-3	DETAIL OF TYPICAL DITCH TREATMENTS			
36	SDTCP-10	EROSION CONTROL			
37	TCP-SC	LOCATION OF R16-3 SIGNS			
38	TEC-2	TRAFFIC CONTROL PLAN FOR POSTED SPEED LIMIT LESS THAN 65 MPH			
39	TEC-3	HIGHWAY SIGN AND BARRICADE DETAILS FOR CONSTRUCTION PROJECTS			
40	VS-1	TRAFFIC CONTROL DETAILS DRUM PLACEMENT AND SHOULDER CLOSURE			
		TYPICAL TEMPORARY EROSION CONTROL DETAILS (SLOPE DRAIN AND TYPE A SILT BASIN)			
		TYPICAL TEMPORARY EROSION CONTROL MEASURES (TYPE B SILT BASIN)			
		VEGETATION SCHEDULE			

4001	LP-1	LIGHTING PLANS (5)			
4002	LP-2	LIGHTING LAYOUT			
4003	LP-3	LIGHTING PLAN			
4004	LP-4	LIGHTING PLAN			
4005	LP-5	LIGHTING PLAN			
4006	LD-1	LIGHTING DETAILS (3)			
4007	LD-2	LIGHTING DETAILS			
4008	LD-3	LIGHTING DETAILS			
6250	TCP-1	STANDARD DRAWINGS - ROADWAY SHEETS (3)			
6251	TCP-2	TRAFFIC CONTROL PLAN WITH FLAGGER (ONE-LANE CLOSURE OF TWO-WAY TRAFFIC)			
6260	TCP-11	TRAFFIC CONTROL PLAN FOR POSTED SPEED LIMIT LESS THAN 65 MPH (4-LANE-MEDIAN LANE OR OUTSIDE LANE CLOSURE/WORK DAY ONLY)			
		TRAFFIC CONTROL PLAN MOBILE OPERATIONS MULTILANE ROADS AND TWO-LANE ROADS	12-01-99		
		TOTAL SHEETS (51)			

10-10-16	DATE	REVISION	BY

PS & E PLANS-DATE 08-10-16	
FMS CON. # 107175/301000	
DATE	REVISIONS
10-10-16	2, 6, 7, 4001, 4007
4008	WCK



APEX ENGINEERING
LIGHTING



MISSISSIPPI DEPARTMENT OF TRANSPORTATION	
DETAILED INDEX	
COUNTY: WASHINGTON	WORKING NUMBER
PROJ. NO.: HSIP-0099-01(009)	DI-1
FILENAME: DI-1.DGN	SHEET NUMBER
DESIGN TEAM	STANTEC
DATE	2

ADDENDUM

SUMMARY OF QUANTITIES (SHEET 1)

STATE	PROJECT NO.
MISS.	HSIP-0099-01(009)

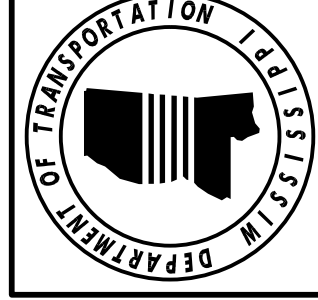
PAY ITEM NO.	PAY ITEM	UNIT	PRELIMINARY	FINAL
907-216-A001 219-A001	SOLID SODDING WATERING	SY KGAL	168 4	
234-A001 235-A001 907-237-A003 907-245-A001 907-246-B002 907-249-A001	TEMPORARY SILT FENCE TEMPORARY EROSION CHECKS WATTLES, 20" TRIANGULAR SILT DIKE ROCKBAGS RIPRAP FOR EROSION CONTROL	LF BALE LF LF EA TON	7,200 96 16 16 16 16	
907-618-A001 619-D1001 619-D2001 619-G4001 619-G7001	MAINTENANCE OF TRAFFIC STANDARD ROADSIDE CONSTRUCTION SIGNS, LESS THAN 10 SQUARE FEET STANDARD ROADSIDE CONSTRUCTION SIGNS, 10 SQUARE FEET OR MORE BARRICADES, TYPE III, SINGLE FACED WARNING LIGHTS, TYPE "B"	LS SF SF LF EA	100% 66 260 30 2	
620-A001	MOBILIZATION	LS	100%	
682-A037 682-A041 682-B037	UNDERGROUND BRANCH CIRCUIT, AWG 8, 4 CONDUCTOR UNDERGROUND BRANCH CIRCUIT, AWG 1, 4 CONDUCTOR UNDERGROUND BRANCH CIRCUIT, JACKED OR BORED, AWG 8, 4 CONDUCTOR	LF LF LF	7,122 175 322	
682-E001 907-682-E001 682-F001	UNDERGROUND JUNCTION BOX UNDERGROUND JUNCTION BOX WITH CONCRETE PAD SECONDARY POWER CONTROLLERS	EA EA EA	4 42 2	
907-683-B018 907-683-B023	LIGHTING ASSEMBLY, LOW MAST, LED, TYPE 40-1-15-315 LIGHTING ASSEMBLY, LOW MAST, LED, TYPE 40-1-8-213	EA EA	8 34	
684-A007 684-B007	POLE FOUNDATION, 30" DIAMETER SLIP CASING, 30" DIAMETER	CY LF	115 26	
907-699-A002	ROADWAY CONSTRUCTION STAKES	LS	100%	

- ① FOR BID PURPOSES ONLY. TO BE USED AS DIRECTED BY THE ENGINEER.
- ② EXACT STATION AND LOCATION OF THE CONTROLLER SHALL BE PLACED AT THE DIRECTION OF THE PROJECT ENGINEER.
- ③ TO BE USED AROUND JUNCTION BOXES AS DIRECTED BY THE ENGINEER.

10-10-16	REVISED QUANTITY	
DATE	REVISION	
BY		
WCK		

MISSISSIPPI DEPARTMENT OF TRANSPORTATION
SUMMARY OF QUANTITIES
 COUNTY: WASHINGTON
 PROJ. NUM.: HSIP-0099-01(009)
 FILENAME: SQ.DGN
 DESIGN TEAM: STANTEC/APEX/CHECKED _____ DATE _____

WORKING NUMBER: SQ-1
 SHEET NUMBER: 6



ADDENDUM

FMS COM:107175/301000

STATE PROJECT NO.
MISS. HSIP-0099-01(009)

ESTIMATED QUANTITIES LIGHTING

Lighting Assembly	Station	High Mast Type		Low Mast Type		Underpass Type	Pole Length	Breakaway Device Required	S.P.C. Number	Circuit Number	Number of Fixtures	Lamp Wattage	I.E.S. Type	UNDG. BR. CKT. AWG*, L.F. (4 Conductor)						UNDG. BR. CKT. (Jacked or Bored) AWG*, L.F. (4 Cond.)						STRUC. MTD. BR. CKT. AWG*, L.F. (4 Cond.)						LOCATION			
		A	B	A	B									10	8	4	2	1	1/0	3/0	10	8	4	2	1	1/0	3/0	8	6	4	1		1/0		
LA-1	77+05			1			40	X	A	2	1	213	II																					65' RT. US 82 E C.L.	
LA-2	77+00			1			40	X	A	1	1	213	II																					55' LT. US 82 E C.L.	
LA-3	78+90			1			40	X	A	2	1	213	II																					55' RT. US 82 E C.L.	
LA-4	78+90			1			40	X	A	1	1	213	II																					60' LT. US 82 E C.L.	
LA-5	80+65			1			40	X	A	2	1	213	II																					60' RT. US 82 E C.L.	
LA-6	80+70			1			40	X	A	1	1	213	II																					65' LT. US 82 E C.L.	
LA-7	82+30			1			40	X	A	2	1	213	II																					65' RT. US 82 E C.L.	
LA-8	82+45			1			40	X	A	1	1	213	II																					70' LT. US 82 E C.L.	
LA-9	84+35			1			40	X	A	2	1	213	II																					70' RT. US 82 E C.L.	
LA-10	84+30			1			40	X	A	1	1	213	II																					75' LT. US 82 E C.L.	
LA-11	86+20			1			40	X	A	2	1	213	II																					75' RT. US 82 E C.L.	
LA-12	86+20			1			40	X	A	1	1	213	II																					75' LT. US 82 E C.L.	
LA-13	88+15			1			40	X	A	2	1	213	II																					75' RT. US 82 E C.L.	
LA-14	88+10			1			40	X	A	1	1	213	II																					75' LT. US 82 E C.L.	
LA-15	89+95			1			40	X	A	2	1	213	II																					70' RT. US 82 E C.L.	
LA-16	90+10			1			40	X	A	1	1	213	II																					75' LT. US 82 E C.L.	
LA-17	91+75			1			40	X	A	2	1	213	II																						50' RT. US 82 E C.L.
LA-18	91+75			1			40	X	A	1	1	213	II																						60' LT. US 82 E C.L.
LA-19	93+85			1			40	X	A	2	1	213	II																						50' RT. US 82 E C.L.
LA-20	93+80			1			40	X	A	1	1	213	II																						50' LT. US 82 E C.L.
LA-21	95+65			1			40	X	A	2	1	213	II																						50' RT. US 82 E C.L.
LA-22	95+70			1			40	X	A	1	1	213	II																						50' LT. US 82 E C.L.
LA-23	97+65			1			40	X	A	2	1	315	III																						50' RT. US 82 E C.L.
LA-24	99+60			1			40	X	A	2	1	315	III																						50' RT. US 82 E C.L.
LA-25	101+65			1			40	X	B	1	1	315	III																						50' LT. US 82 E C.L.
LA-26	103+60			1			40	X	B	1	1	315	III																						50' LT. US 82 E C.L.
LA-27	105+60			1			40	X	B	2	1	213	II																						50' RT. US 82 E C.L.
LA-28	105+50			1			40	X	B	1	1	213	II																						50' LT. US 82 E C.L.
LA-29	107+70			1			40	X	B	2	1	213	II																						50' RT. US 82 E C.L.
LA-30	107+65			1			40	X	B	1	1	213	II																						55' LT. US 82 E C.L.
LA-31	109+60			1			40	X	B	2	1	213	II																						55' RT. US 82 E C.L.
LA-32	109+60			1			40	X	B	1	1	213	II																						55' LT. US 82 E C.L.
LA-33	111+60			1			40	X	B	2	1	213	II																						55' RT. US 82 E C.L.
LA-34	111+60			1			40	X	B	1	1	213	II																						55' LT. US 82 E C.L.
LA-35	113+10			1			40	X	B	2	1	315	III																						85' RT. US 82 E C.L.
LA-36	113+25			1			40	X	B	1	1	315	III																						95' LT. US 82 E C.L.
LA-37	114+60			1			40	X	B	2	1	315	III																						85' RT. US 82 E C.L.
LA-38	114+60			1			40	X	B	1	1	315	III																						85' LT. US 82 E C.L.
LA-39	116+20			1			40	X	B	2	1	213	II																						55' RT. US 82 E C.L.
LA-40	116+10			1			40	X	B	1	1	213	II																						55' LT. US 82 E C.L.
LA-41	118+20			1			40	X	B	2	1	213	II																						60' RT. US 82 E C.L.
LA-42	118+10			1			40	X	B	1	1	213	II																						60' LT. US 82 E C.L.
SPC-A	92+47																																		120' RT. US 82 E C.L.
SPC-B	116+80																																		115' RT. US 82 E C.L.
TOTALS				34	8																														

• Pole length is for mounting height.

MISSISSIPPI DEPARTMENT OF TRANSPORTATION
ESTIMATED QUANTITIES
LIGHTING ITEMS

COUNTY: WASHINGTON
 PROJ. NUM.: HSIP-0099-01(009)
 FILENAME: EQ-1.DGN
 DESIGN TEAM APEX CHECKED WCK DATE

MISSISSIPPI DEPARTMENT OF TRANSPORTATION
 WORKING NUMBER
EQ-1
 SHEET NUMBER
7

ADDENDUM

LUMINAIRE SPECIFICATION

THE LUMINAIRE SHALL BE A ROADWAY LED LUMINAIRE WITH THE FOLLOWING DISTRIBUTION:

- TYPE A - TYPE 2 ROADWAY
- TYPE B - TYPE 3 ROADWAY

LUMINAIRES MUST BE PROVIDED WITH COMPLETE PHOTOMETRIC PLAN ON 22" X 34" LAYOUT WITH CALCULATIONS SHOWING THAT THE PROPOSED LUMINAIRE CAN MEET THE FOLLOWING CRITERIA USING THE SAME POLE LOCATIONS AND MOUNTING HEIGHTS:

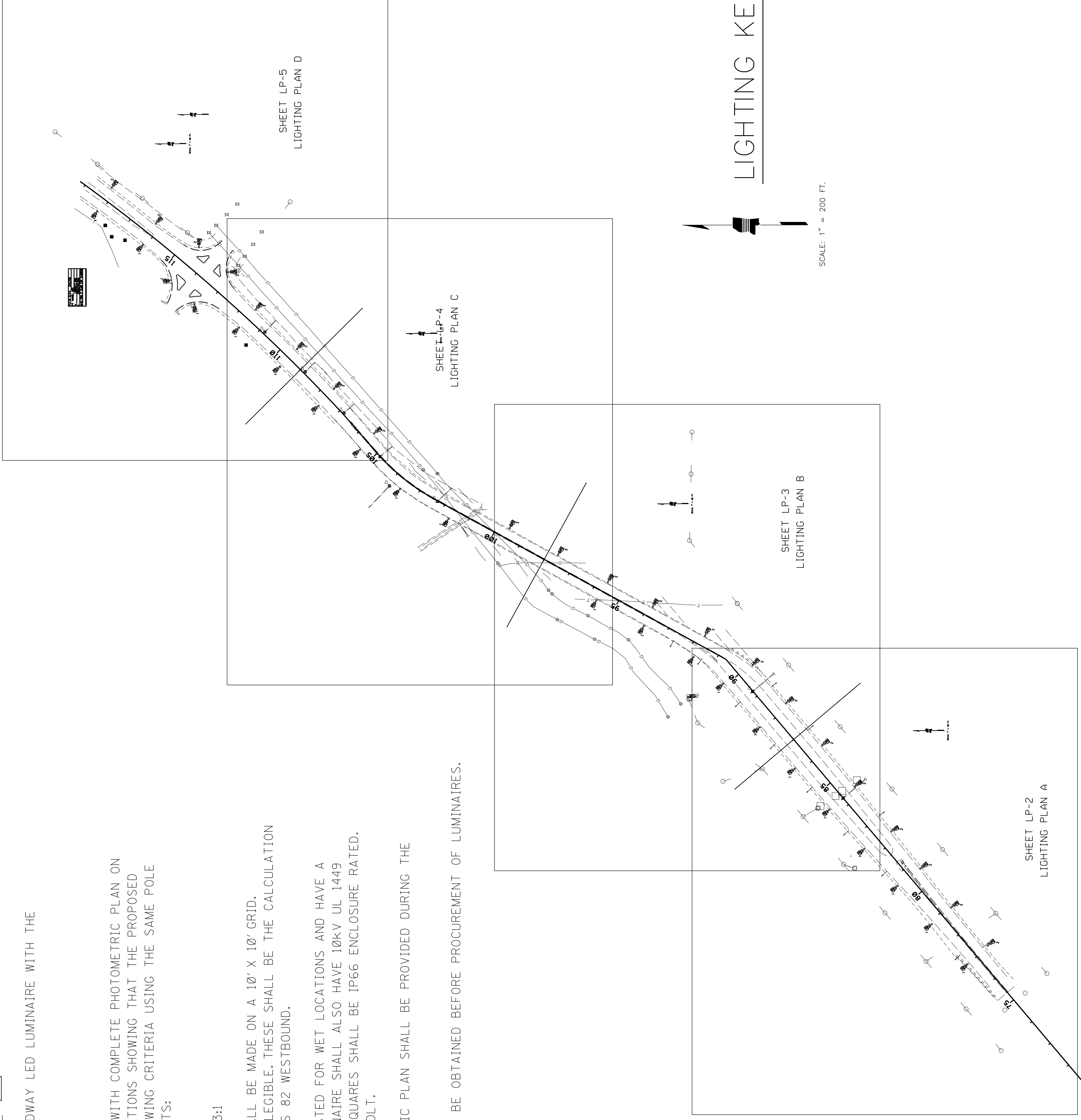
- AVERAGE FC = 1.7
- MINIMUM FC = 0.6
- AVG/MIN (UNIFORMITY) = 3:1

PHOTOMETRIC CALCULATIONS SHALL BE MADE ON A 10' X 10' GRID. CALCULATION POINTS SHALL BE LEGIBLE; THESE SHALL BE THE CALCULATION ZONES: US 82 EASTBOUND AND US 82 WESTBOUND.

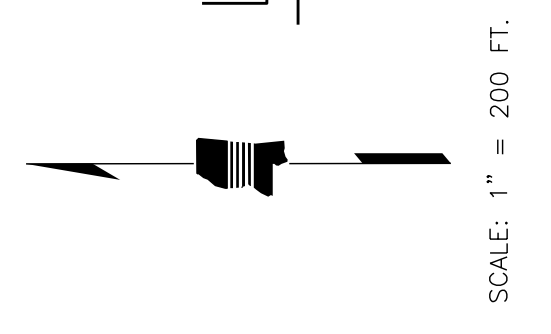
THE LUMINAIRE SHALL BE UL LISTED FOR WET LOCATIONS AND HAVE A FIVE YEAR WARRANTY. THE LUMINAIRE SHALL ALSO HAVE 10kV UL 1449 SURGE PROTECTION. THE LIGHT SQUARES SHALL BE IP66 ENCLOSURE RATED. THE LUMINAIRE SHALL BE 240 VOLT.

DOCUMENTATION AND PHOTOMETRIC PLAN SHALL BE PROVIDED DURING THE SUBMITTAL PROCESS.

APPROVAL OF LUMINAIRE SHOULD BE OBTAINED BEFORE PROCUREMENT OF LUMINAIRES.



LIGHTING KEY PLAN



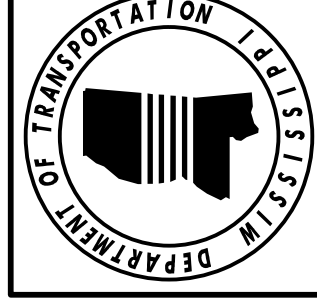
DATE	REVISION NOTES	BY
10-10-16		WCK

MISSISSIPPI DEPARTMENT OF TRANSPORTATION
LIGHTING KEY PLAN

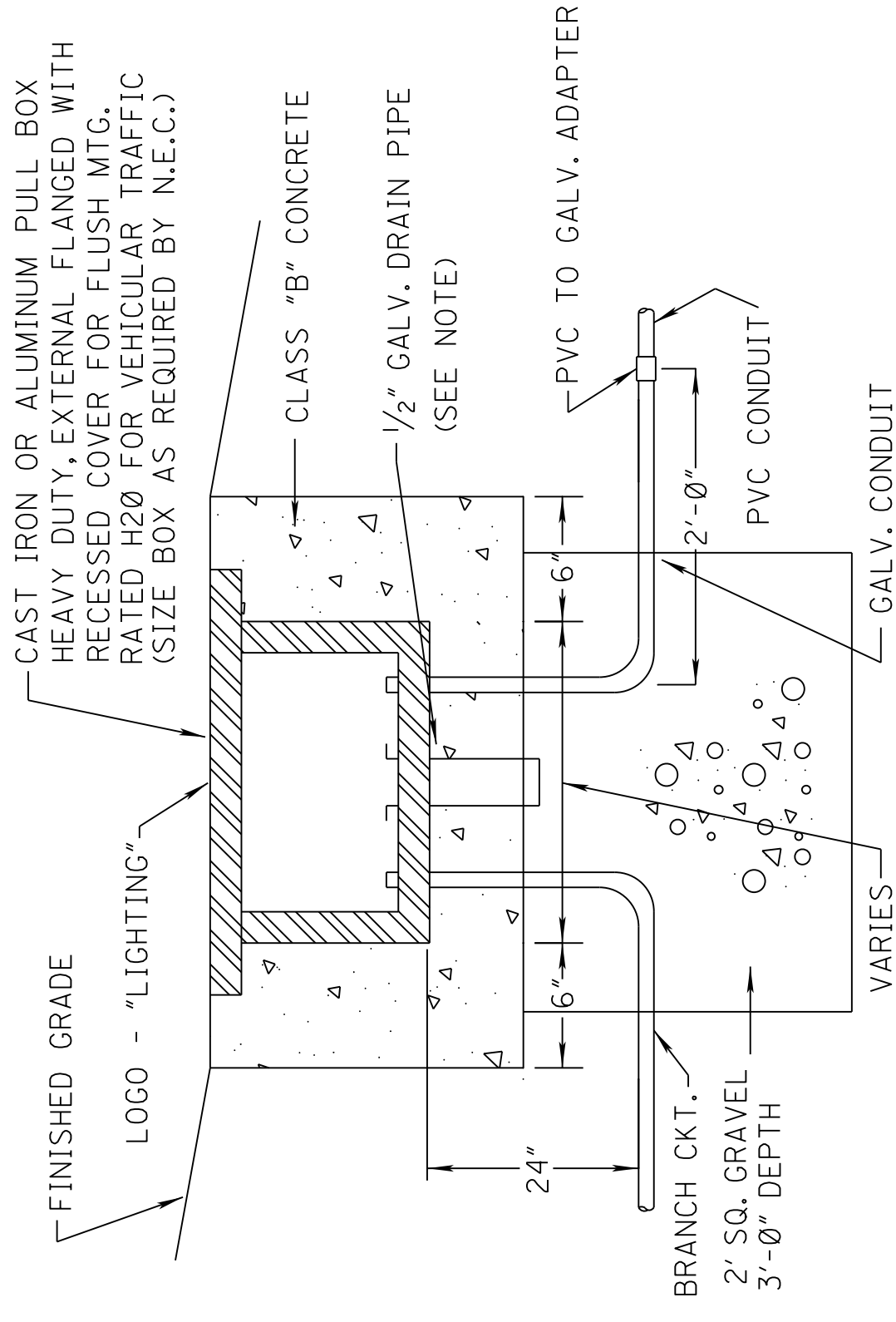
COUNTY: WASHINGTON
 PROJ. NO: HSIP-0099-01(009)

FILENAME: LIGHTING_KEY_PLAN.DGN
 DESIGN TEAM: APEX CHECKED: WCK DATE: _____

WORKING NUMBER: LP-1
 SHEET NUMBER: 4001

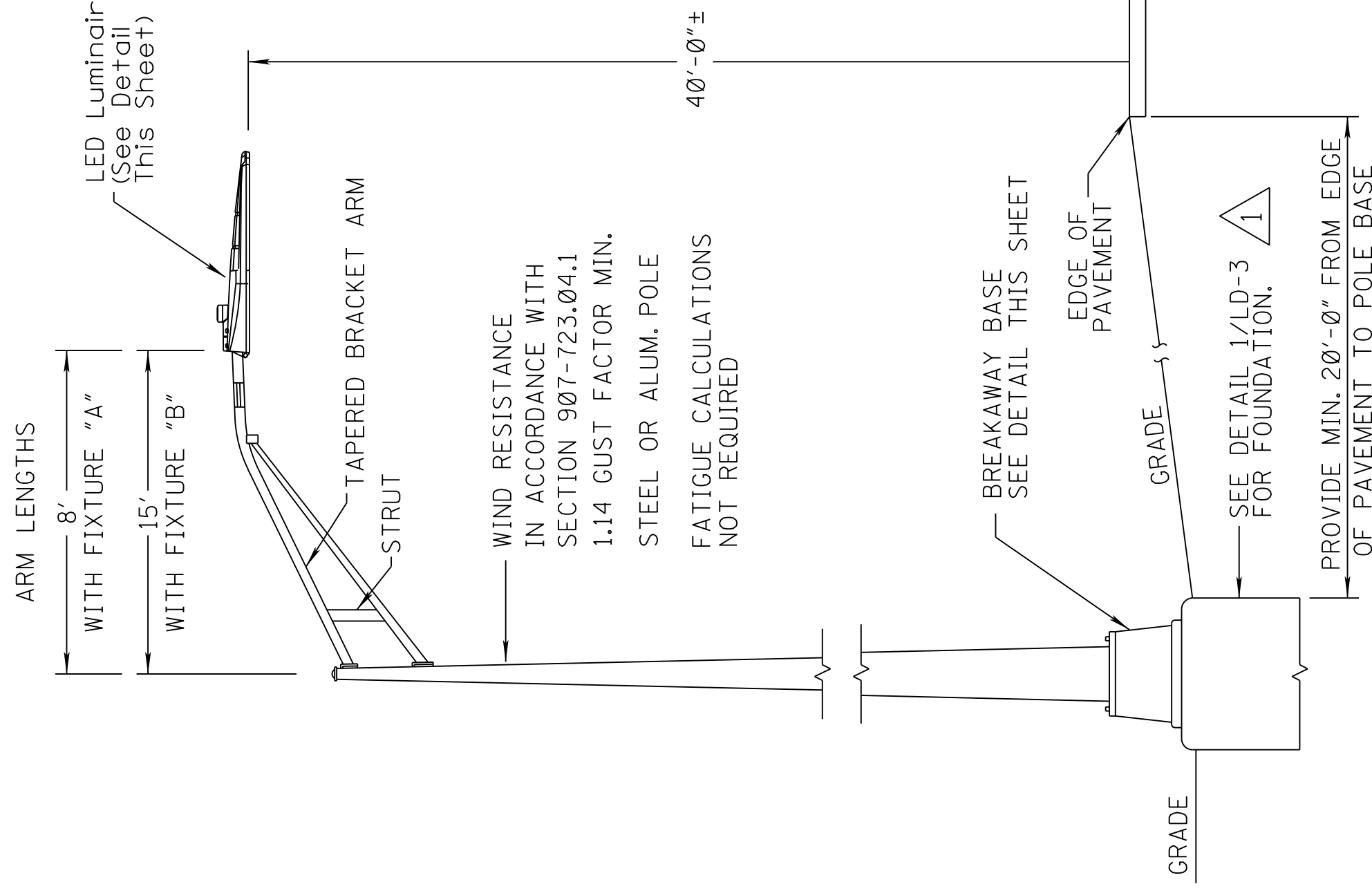


ADDENDUM

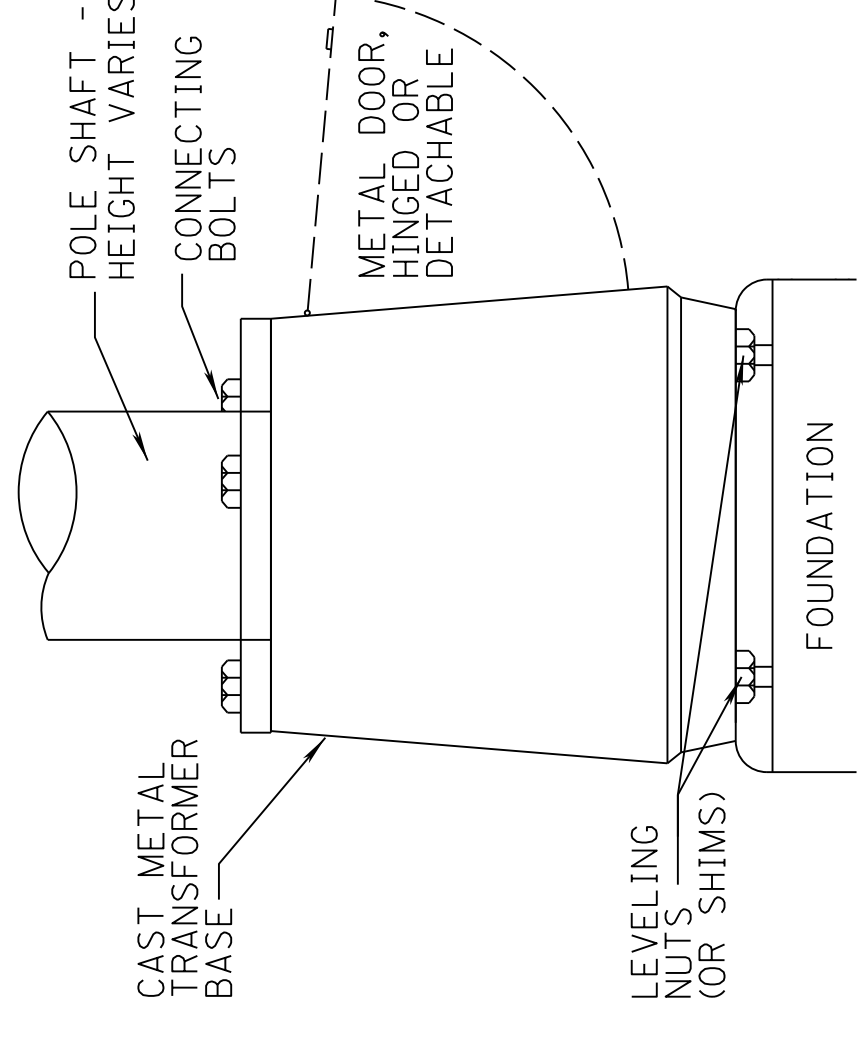


1
LD-2
N.T.S.
UNDERGROUND PULL BOX DETAIL

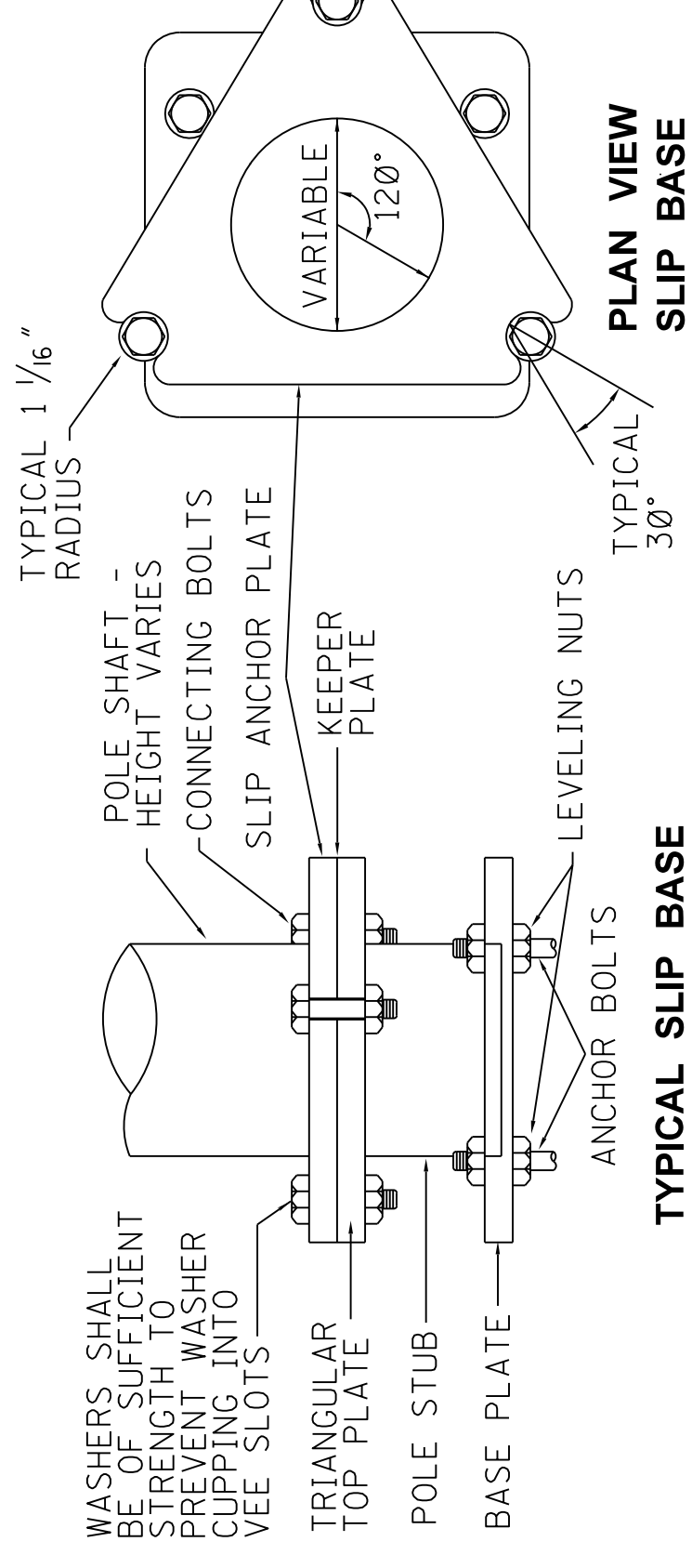
NOTE: IF BOX IS NOT LEVEL (DUE TO GROUND CONTOUR) DRAIN IS TO BE LOCATED AT LOWEST POINT IN BOX.



3
LD-2
N.T.S.
TYPICAL LOWMAST LIGHTING ASSEMBLY DETAIL



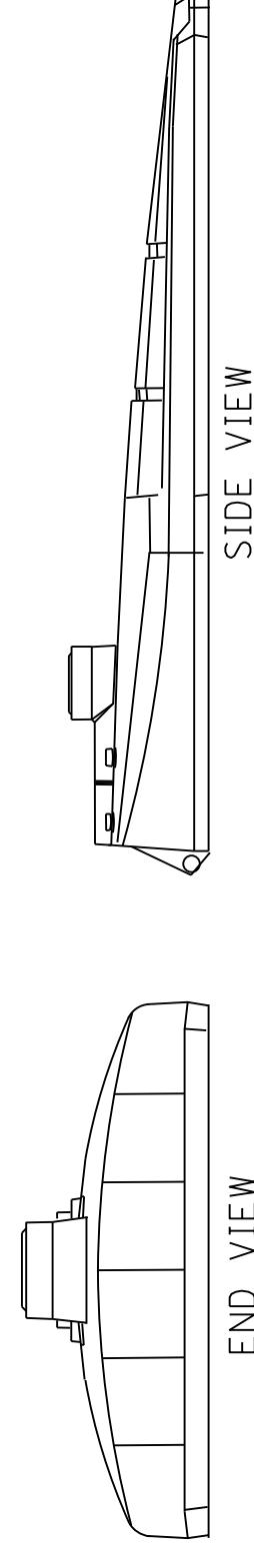
TYPICAL TRANSFORMER BASE



TYPICAL SLIP BASE

TYPICAL BREAKAWAY BASES

N.T.S.



LUMINAIRE SHALL BE ROADWAY LED LUMINAIRE. **1**

NOTE - DESIGN IS BASED ON:

FIXTURE "A" - T2R DISTRIBUTION

FIXTURE "B" - T3R DISTRIBUTION

4
LD-27
N.T.S.
LOWMAST LUMINAIRE DETAIL
LUMINAIRE REQUIREMENTS - REFER TO SPECIFICATIONS

NOTES:

- KEEPER PLATE IS FABRICATED FROM #28 GAUGE GALVANIZED SHEET STEEL. ONE (1) FURNISHED WITH EACH POLE EQUIPPED WITH SLIP BASE.
- SLIP ANCHOR PLATE IS FABRICATED FROM STEEL PLATE CONFORMING TO ASTM A-36 WITH MINIMUM YIELD STRENGTH OF 36, KSI. ONE (1) SLIP ANCHOR PLATE IS FURNISHED WITH EACH SLIP BASE EQUIPPED POLE.
- BREAKWAY DEVICES MUST MEET THE REQUIREMENTS OF THE CURRENT EDITION OF AASHTO STANDARD SPECIFICATIONS FOR STRUCTURAL SUPPORTS FOR HIGHWAY SIGNS, LUMINAIRES AND TRAFFIC SIGNALS; OR NCHRP REPORT 350.
- CONTRACTOR SHALL LIMIT THE AMOUNT OF WIRE USED IN THE BREAKAWAY BASE DEVICE SO THAT THE CIRCUIT WILL ELECTRICALLY DISCONNECT AS CLOSE AS POSSIBLE TO THE TOP OF THE FOUNDATION WHEN STRUCK BY AN ERRANT VEHICLE.
- CONDUIT PROJECTING INTO THE POLE SHALL BE CUT OFF LOW ENOUGH TO ENSURE IT DOES NOT EFFECT THE OPERATION OF THE BREAKAWAY DEVICE. IN NO INSTANCE SHALL THE CONDUIT EXTEND ABOVE THE MAXIMUM 4" STUB HEIGHT.

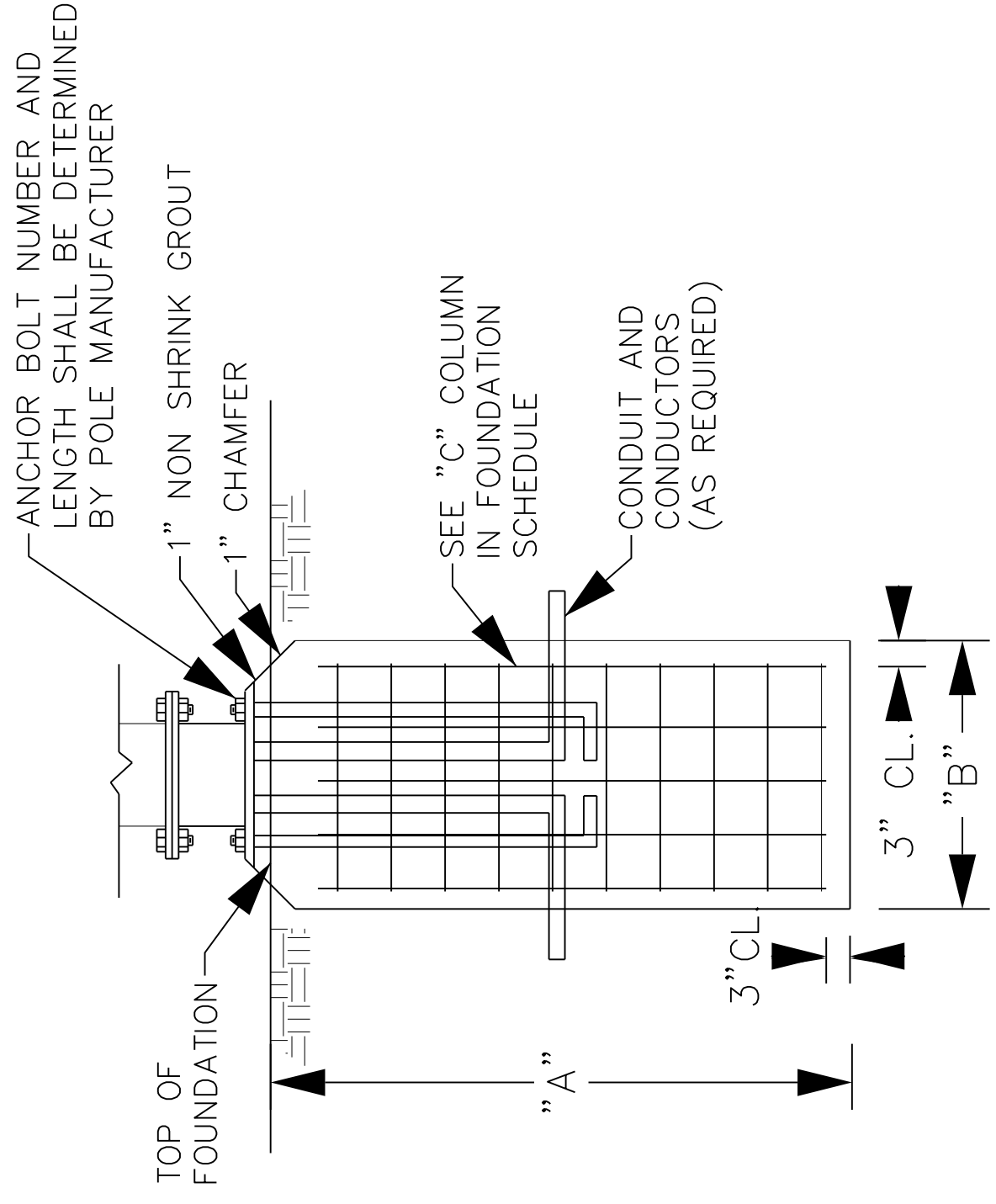
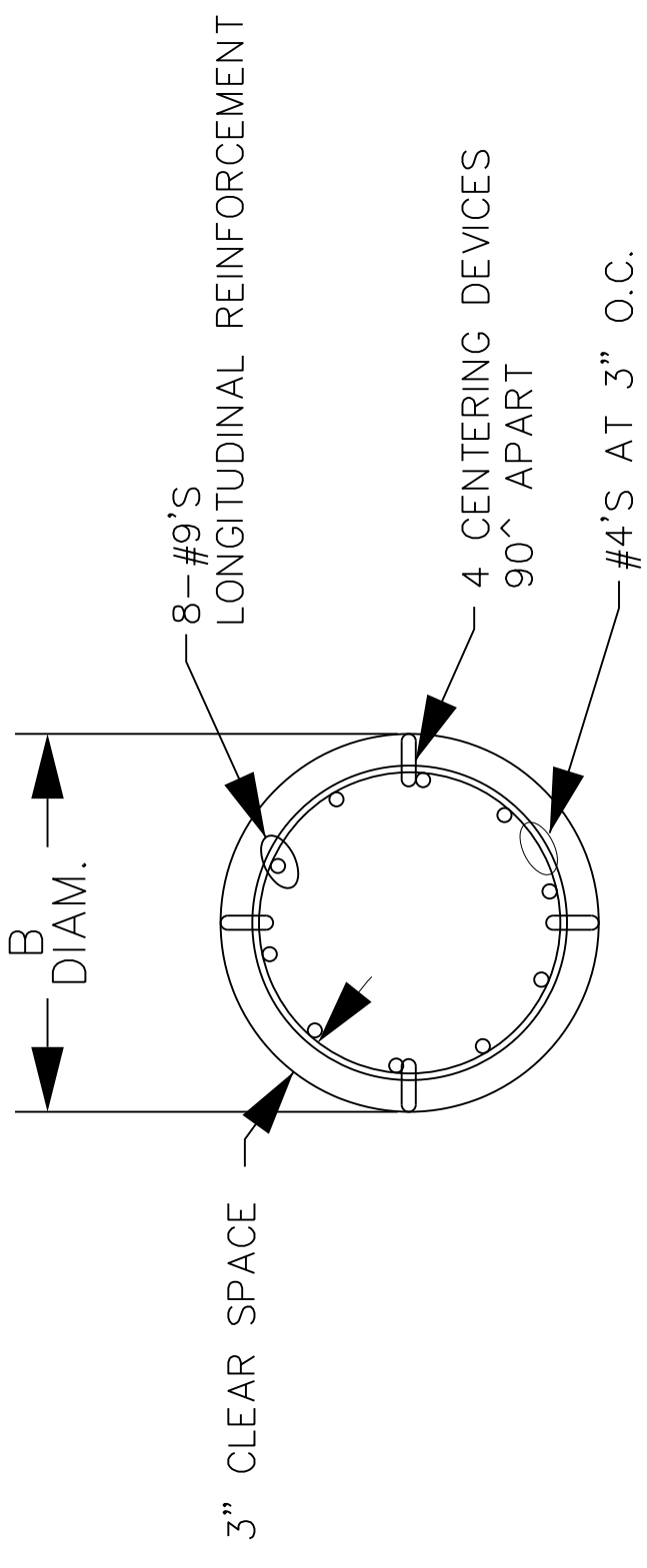
WKC	DATE	REVISION
10-10-16		REVISED NOTES

MISSISSIPPI DEPARTMENT OF TRANSPORTATION
LIGHTING DETAILS

COUNTY: WASHINGTON
PROJ. NO: HSIP-0099-01(009)
FILENAME: LD-2.DGN

DESIGN TEAM: APEX CHECKED: WCK DATE: _____
WORKING NUMBER: LD-2
SHEET NUMBER: 4007

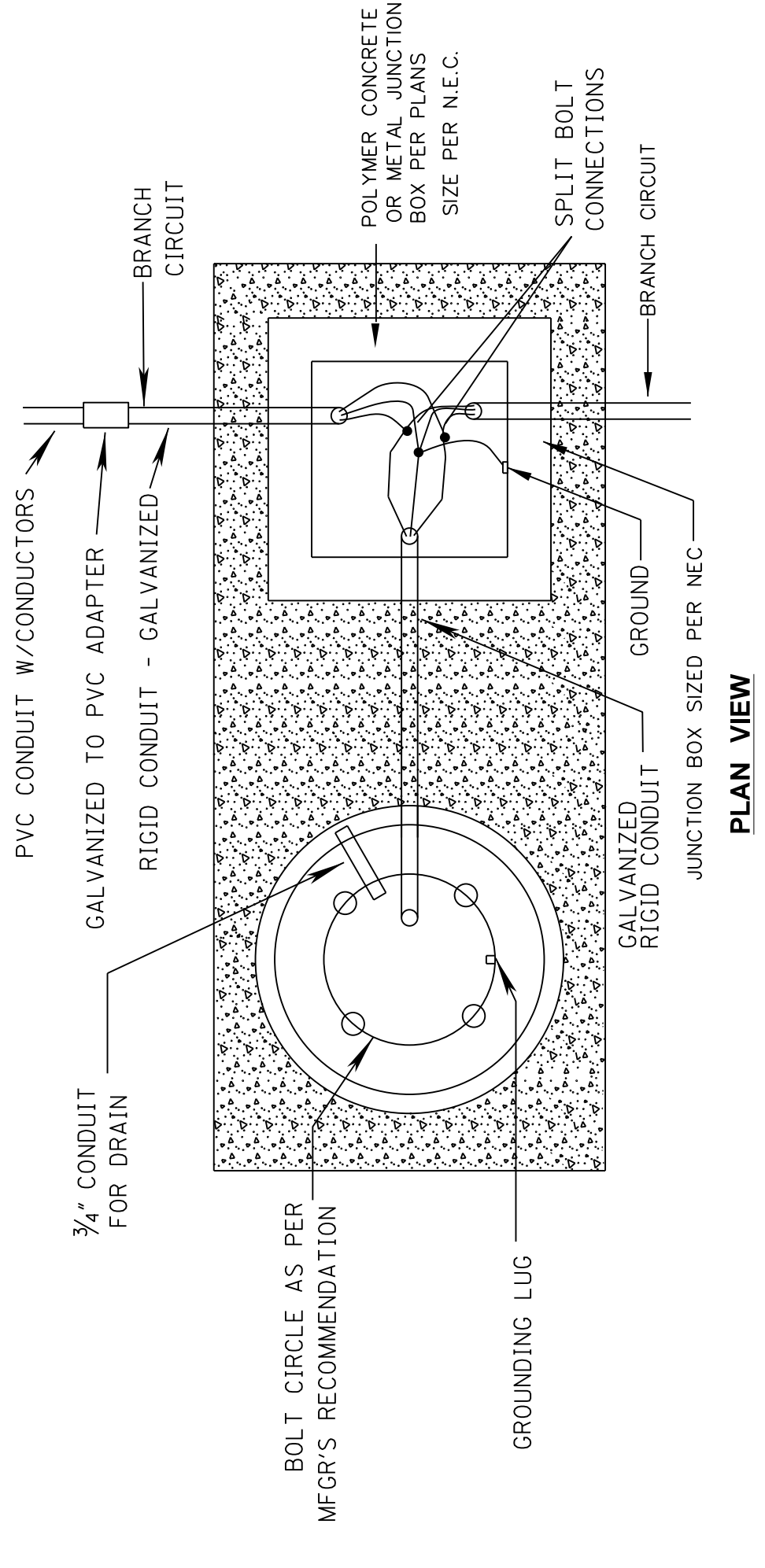
ADDENDUM



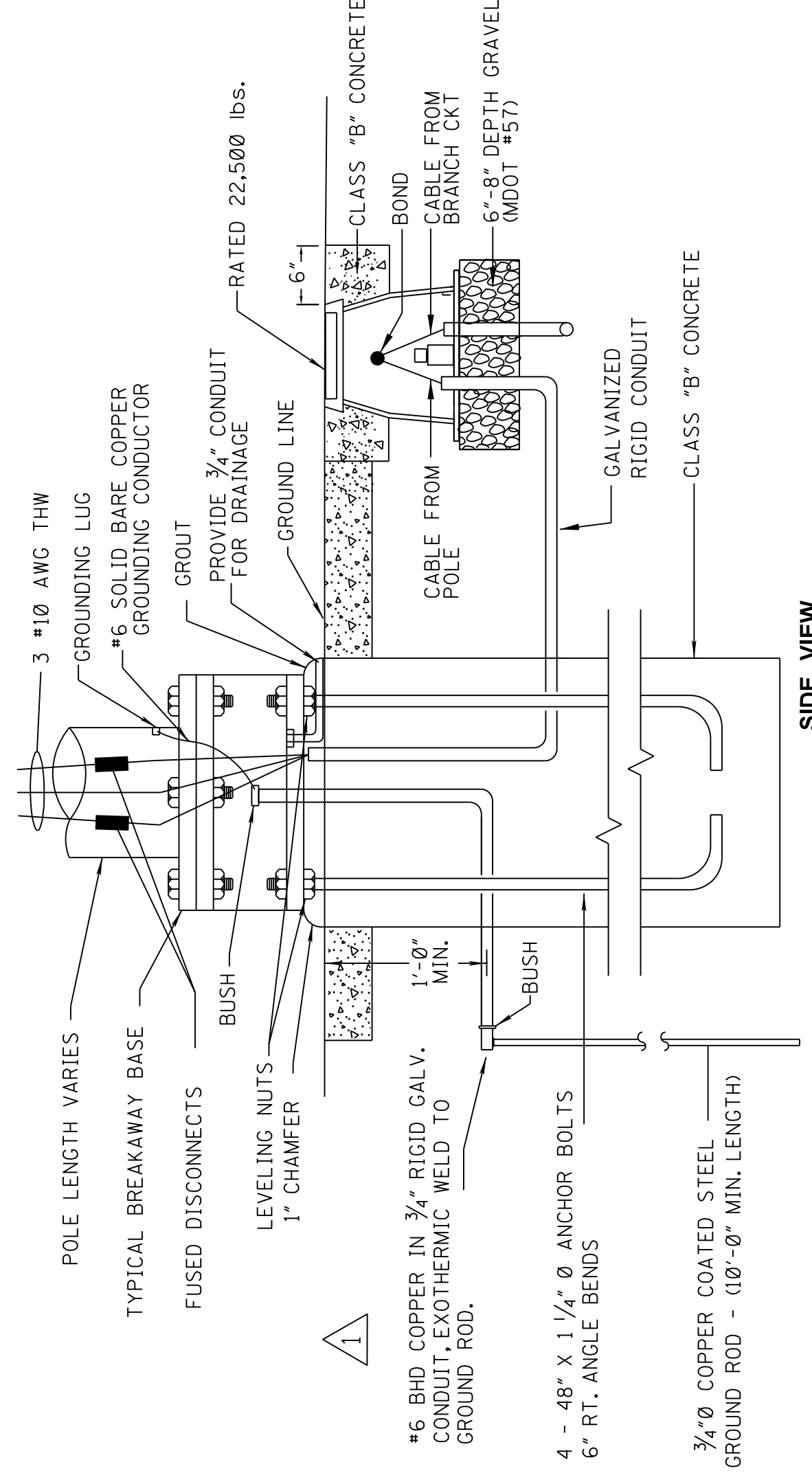
1 FOUNDATION DETAIL TYPE A & B
N.T.S.

FOUNDATION SCHEDULE							
Pole	Type Assy.	A (ft.)	B (ft.)	C Reinforcement	D (in.)	Cubic Yards Per Foundation	Totals
LA-1 to 22 LA-27 to 34 LA-39 to 42 (40ft.)	A	15'-0"	2'-6"	8-#9 bars w/#4 bars 3" on center	0"	2.72	92.48
LA-23 to 26 LA-35 to 38 (40ft.)	B	15'-0"	2'-6"	8-#9 bars w/#4 bars 3" on center	0"	2.72	21.76

NOTE:
CASING IS A SEPARATE PAY ITEM.



PLAN VIEW



SIDE VIEW

2 FOUNDATION DETAIL TYPE - LIGHTING ASSEMBLY
N.T.S.

BY	REVISION	DATE
WGR		10-10-16
	DELETED NOTE	

MISSISSIPPI DEPARTMENT OF TRANSPORTATION
LIGHTING DETAILS

COUNTY: WASHINGTON
PROJ. NO: HSIP-0099-01(009)

FILENAME: LD-3.DGN
DESIGN TEAM: APEX
CHECKED: xx
DATE: _____

WORKING NUMBER: LD-3
SHEET NUMBER: 4008