

SECTION 905 -- PROPOSAL (CONTINUED)

I (We) hereby certify by digital signature and electronic submission via Bid Express of the Section 905 proposal below, that all certifications, disclosures and affidavits incorporated herein are deemed to be duly executed in the aggregate, fully enforceable and binding upon delivery of the bid proposal. I (We) further acknowledge that this certification shall not extend to the bid bond or alternate security which must be separately executed for the benefit of the Commission. This signature does not cure deficiencies in any required certifications, disclosures and/or affidavits. I (We) also acknowledge the right of the Commission to require full and final execution on any certification, disclosure or affidavit contained in the proposal at the Commission's election upon award. Failure to so execute at the Commission's request within the time allowed in the Standard Specifications for execution of all contract documents will result in forfeiture of the bid bond or alternate security.

Bidder acknowledges receipt of and has added to and made a part of the proposal and contract documents the following addendum (addenda):

ADDENDUM NO. 1 DATED 3/23/2017 ADDENDUM NO. DATED
 ADDENDUM NO. DATED ADDENDUM NO. DATED

Number	Description
1	Revised Table of Contents; Add NTB No. 6928; NTB No. 6961, replaces NTB No. 3067; Bid Items; Revised or Added Plan Sheet Nos. 2, 3, 5, 5.1, 6, 7, 10, 16.1, 31, 49.1, 50, & 90; Amendment EBS Download Required.

TOTAL ADDENDA: 1
 (Must agree with total addenda issued prior to opening of bids)

Respectfully Submitted,

DATE _____

 Contractor

BY _____

Signature

TITLE _____

ADDRESS _____

CITY, STATE, ZIP _____

PHONE _____

FAX _____

E-MAIL _____

(To be filled in if a corporation)

Our corporation is chartered under the Laws of the State of _____ and the names, titles and business addresses of the executives are as follows:

 President Address

 Secretary Address

 Treasurer Address

The following is my (our) itemized proposal.

NHPP-9999-05(027) / 107258301000, NHPP-9999-05(027)/ 107258302000 & NHPP-9999-05(027)/ 107258303000

Hinds, Madison & Scott County(ies)

**MISSISSIPPI DEPARTMENT OF TRANSPORTATION
TABLE OF CONTENTS**

**PROJECT: NHPP-9999-05(027) / 107258301 - Hinds
NHPP-9999-05(027)/107258302 - Madison
NHPP-9999-05(027)/107258303 - Scott**

Section 901 - Advertisement

Section 904 - Notice to Bidders

#1	Governing Specifications
#3	Final Cleanup
#640	Fiber Reinforced Concrete
#1405	Errata & Modifications to 2004 Standard Specifications
#1928	Federal Bridge Formula
#2382	Status of ROW, w/ Attachments
#3131	Temporary Traffic Paint
#3512	Wage Rates
#3612	Additional Erosion Control Requirements
#3704	Use of Precast Drainage Units
#3893	Petroleum Products Base Price
#4214	Safety Apparel
#4473	Alternate Crushed Stone Base Bid Items
#4526	Electronic Addendum Process
#4565	Manual on Uniform Traffic Control Devices (MUTCD)
#5044	Questions Regarding Bidding
#5053	Contractor Correspondence
#5252	Terminal End Sections
#5405	Traffic Control Devices
#5411	Safety Edge
#5412	Weight Limits
#5556	DUNS Requirement for Federal Funded Projects
#5865	Non-Quality Control / Quality Assurance Concrete
#5866	Payroll Requirements
#5896	DBE Forms, Participation and Payment
#6411	Disadvantaged Business Enterprise, w/ Supplement
#6728	Adjustments for Bituminous Materials
#6924	Contract Time
#6925	Specialty Items
#6926	Lane Closure Restrictions
#6927	Construction Schedule
#6928	Cooperation Between Contractors
#6961	Storm Water Discharge Associated with Construction Activities (≥ 1 and < 5 Acres)
906	Required Federal Contract Provisions -- FHWA 1273, w/Supplements

Section 907 - Special Provisions

907-101-4 Definitions

**PROJECT: NHPP-9999-05(027) / 107258301 - Hinds
NHPP-9999-05(027)/107258302 - Madison
NHPP-9999-05(027)/107258303 - Scott**

907-102-12	Bidding Requirements and Conditions
907-103-11	Award and Execution
907-104-5	Scope of Work
907-104-6	Partnering Process
907-105-10	Control of Work
907-107-13	Legal Relations and Responsibility to Public, w/ Supplement
907-107-14	Contractor's Protection Plan, w/ Supplement
907-108-38	Prosecution and Progress
907-109-8	Measurement and Payment
907-110-2	Wage Rates
907-216-1	Solid Sodding
907-225-5	Grassing
907-226-3	Temporary Grassing
907-227-10	Hydroseeding
907-229-2	Erosion Mats
907-234-5	Siltation Barriers
907-237-4	Wattles
907-246-3	Sandbags & Rockbags
907-304-13	Granular Courses
907-401-7	Asphalt Pavements, w/ Supplement
907-403-14	Asphalt Pavements
907-407-2	Tack Coat
907-601-1	Structural Concrete
907-618-9	Placement of Temporary Traffic Stripe
907-618-13	Temporary Construction Signs
907-619-5	Changeable Message Signs
907-626-25	Thermoplastic Traffic Markings
907-637-4	ITS Equipment Cabinets
907-657-11	Fiber Optic Cable (OSP)
907-668-1	Traffic Signal Conduit
907-682-12	Branch Circuit Wire
907-699-5	Construction Stakes
907-701-5	Hydraulic Cement, w/ Supplement
907-702-5	Specifications for Bituminous Materials
907-703-12	Aggregates, w/ Supplement
907-708-6	Non-Metal Drainage Structures
907-710-1	Fast Dry Solvent Traffic Paint
907-711-4	Synthetic Structural Fiber Reinforcement
907-713-6	Admixtures for Concrete
907-714-8	Miscellaneous Materials
907-715-4	Roadside Development Materials
907-720-2	Pavement Marking Materials
907-804-19	Concrete Bridges and Structures, w/ Supplement

Section 905 - Proposal, Proposal Bid Items, Combination Bid Proposal
Certification of Performance - Prior Federal-Aid Contracts

PROJECT: NHPP-9999-05(027) / 107258301 - Hinds
NHPP-9999-05(027)/107258302 - Madison
NHPP-9999-05(027)/107258303 - Scott

Certification Regarding Non-Collusion, Debarment and Suspension

SAM.GOV Registration and DUNS Number

Section 902 - Contract Form

Section 903 - Contract Bond Forms

Form -- OCR-485

Pile Data Form

Progress Schedule

(REVISIONS TO THE ABOVE WILL BE INDICATED ON THE SECOND SHEET
OF SECTION 905 AS ADDENDA)

03/23/2017 07:53 AM

MISSISSIPPI DEPARTMENT OF TRANSPORTATION

SECTION 904 - NOTICE TO BIDDERS NO. 6928

CODE: (SP)

DATE: 3/22/2017

SUBJECT: Cooperation Between Contractors

PROJECT: NHPP-9999-05(027) / 107258301, 302, & 303 –
Hinds, Madison, & Scott Counties

The Bidder's attention is hereby called to Subsection 105.07, Cooperation between Contractors, of the 2004 Edition of the Mississippi Standard Specifications for Road and Bridge Construction.

The Bidder is advised that a portion of this project is within the limits of the following construction project:

IM-0055-02(240) / 106616301 – Madison County, Mill and Overlay I-55 from SR 463 to North of SR 22.

The Contractor shall cooperate in all respects and shall coordinate construction of all phases of work with the Contractor of the adjoining project. Failure to coordinate work schedules, such as but not limited to lane closures, shall not be reason to modify contract time.

MISSISSIPPI DEPARTMENT OF TRANSPORTATION

SECTION 904 - NOTICE TO BIDDERS NO.6961

CODE: (SP)

DATE: 03/16/2017

**SUBJECT: Storm Water Discharge Associated with Construction Activity
(≥ 1 and < 5 Acres)**

Construction Storm Water General NPDES Permit MSR 15 to discharge storm water associated with construction activity is required. This project is granted permission to discharge treated storm water into State waters. Copies of said permit and Storm Water Pollution Prevention Plan (SWPPP) are on file with the Department.

Prior to the execution of the contract, the successful bidder shall execute and deliver to the Executive Director an original signed copy of the completed Prime Contractor Certification (Form No. 1).

Failure of the bidder to execute and file the completed Prime Contractor Certification (Form No. 1) shall be just cause for the cancellation of the award.

The executed Prime Contractor Certification (Form No. 1) shall be prima facie evidence that the bidder has examined the permit, is satisfied as to the terms and conditions contained therein, and that the bidder has the primary responsibility for meeting all permit terms and conditions including, but not limited to, the inspection and reporting requirements of Part IV. For this project, the Contractor shall furnish, set up and read, as needed, an on-site rain gauge.

The Contractor must furnish the Project Engineer a completed copy of the Small Construction Notice of Intent (SCNOI) along with the Contractor's Erosion Control Plan.

The Contractor shall make inspections in accordance with condition No. S-4, Page 19, and shall furnish the Project Engineer with the results of each weekly inspection as soon as possible following the date of inspection. The weekly inspections must be documented monthly on the Inspection and Certification Form, a copy of which is provided. The Contractor's representative and the Project Engineer shall jointly review and discuss the results of the inspections so that corrective action can be taken. The Project Engineer shall retain copies of the inspection reports.

The Engineer will have the authority to suspend all work and/or withhold payments for failure of the Contractor to carry out provisions of MDEQ's Storm Water Construction General Permit, the erosion control plan, updates to the erosion control plan, and /or proper maintenance of the BMPs.

Securing a permit (s) for storm water discharge associated with the Contractor's activity on any other regulated area the Contractor occupies, shall be the responsibility of the Contractor.

Slide Repair on I-20, I-55, I-220, and US 25, known as Federal Aid Project Nos. NHPP-9999-05(027) / 107258301, 302, & 303 in Hinds, Madison, and Scott Counties.

Line No.	Item Code	Adj Code	Quantity	Units	Description [Fixed Unit Price]
Roadway Items					
0010	201-A001		1	Lump Sum	Clearing and Grubbing
0020	202-B005		1,050	Square Yard	Removal of Asphalt Pavement, All Depths
0030	202-B025		1,047	Square Yard	Removal of Concrete Paved Ditch
0040	202-B038		450	Linear Feet	Removal of Curb, All Types
0050	202-B041		300	Linear Feet	Removal of Fence, All Types
0060	202-B064		634	Linear Feet	Removal of Pipe, 8" And Above
0070	202-B076		936	Linear Feet	Removal of Traffic Stripe
0080	202-B134		220	Linear Feet	Removal of Guard Rail, Including Rails & Posts
0090	202-B135		75	Linear Feet	Removal of Guard Rail Double Faced Rail Including Rail & Posts
0100	202-B146		1,300	Linear Feet	Removal of Existing Wiring
0110	202-B247		1	Each	Removal of Pull Box
0120	203-EX040	(E)	17,275	Cubic Yard	Borrow Excavation, AH, LVM, Class B9-6
0130	203-G004	(E)	20,002	Cubic Yard	Excess Excavation, LVM, AH
0140	204-A008		2,486	Square Yard	Geogrid, Type VI, Uniaxial
0150	206-A001	(S)	32	Cubic Yard	Structure Excavation
0160	206-B001	(E)	9	Cubic Yard	Select Material for Undercuts, Contractor Furnished, FM
0170	209-A004		166	Square Yard	Geotextile Stabilization, Type V, Non-Woven
0180	211-B001	(E)	2,000	Cubic Yard	Topsoil for Slope Treatment, Contractor Furnished
0190	213-C001		9	Ton	Superphosphate
0200	217-A001		100	Square Yard	Ditch Liner
0210	219-A001		14	Thousand Gallon	Watering [\$20.00]
0220	220-A001		9	Acre	Insect Pest Control [\$30.00]
0230	221-A001	(S)	49	Cubic Yard	Portland Cement Concrete Paved Ditch
0240	234-A001		1,660	Linear Feet	Temporary Silt Fence
0250	503-C007		175	Linear Feet	Saw Cut, Full Depth
0260	602-A001	(S)	621	Pounds	Reinforcing Steel
0270	603-CA004	(S)	576	Linear Feet	30" Reinforced Concrete Pipe, Class III
0280	603-CA007	(S)	24	Linear Feet	48" Reinforced Concrete Pipe, Class III
0290	603-CB006	(S)	1	Each	48" Reinforced Concrete End Section
0300	606-B007		200	Linear Feet	Guard Rail, Class A, Type 1, 'W' Beam, Metal Post
0310	606-C002		1	Each	Guard Rail, Cable Anchor Type 1, Metal Post
0320	606-E003		1	Each	Guard Rail, Terminal End Section, Non-Flared

Line No.	Item Code	Adj Code	Quantity	Units	Description [Fixed Unit Price]
0330	607-B001		220	Linear Feet	60" Type I Chain Link Fence, Class I
0340	607-P1007		19	Each	Line Post, 7' x 1 1/2" Galvanized Steel
0350	607-P2009		7	Each	Brace Post, 8' x 2 1/2" Galvanized Steel
0360	607-P2011		2	Each	Brace Post, 10' x 2 1/2" Galvanized Steel
0370	607-P2012		1	Each	Brace Post, 12' x 2 1/2" Galvanized Steel
0380	619-A1001		1,112	Linear Feet	Temporary Traffic Stripe, Continuous White
0390	619-A1003		200	Linear Feet	Temporary Traffic Stripe, Continuous White, Paint
0400	619-A2003		200	Linear Feet	Temporary Traffic Stripe, Continuous Yellow, Paint
0410	619-D1001		121	Square Feet	Standard Roadside Construction Signs, Less than 10 Square Feet
0420	619-D2001		656	Square Feet	Standard Roadside Construction Signs, 10 Square Feet or More
0430	619-F3003		7	Each	Delineators, Guard Rail, Yellow
0440	619-G4001		112	Linear Feet	Barricades, Type III, Single Faced
0450	619-G5001		9	Each	Free Standing Plastic Drums
0460	620-A001		1	Lump Sum	Mobilization
0470	647-A003		2	Each	Pullbox, Type 4
0480	647-A004		1	Each	Pullbox, Type 5
0490	647-A005		1	Each	Pullbox, Type 2
0500	666-B038		200	Linear Feet	Electric Cable, Underground in Conduit, THHN, AWG #4, 3 Conductor
0510	668-A014		50	Linear Feet	Traffic Signal Conduit, Underground, Type 4, 1 1/2"
0520	668-A018		110	Linear Feet	Traffic Signal Conduit, Underground, Type 4, 2"
0530	803-D003	(S)	5,450	Linear Feet	HP 14 x 73 Steel Piling
0540	815-A006	(S)	394	Ton	Loose Riprap, Size 100
0550	815-E001	(S)	1,091	Square Yard	Geotextile under Riprap
0560	907-216-A001		655	Square Yard	Solid Sodding
0570	907-225-A001		6	Acre	Grassing
0580	907-225-B001		3	Ton	Agricultural Limestone
0590	907-225-C001		9	Ton	Mulch, Vegetative Mulch
0600	907-226-A001		6	Acre	Temporary Grassing
0610	907-229-A001		4,366	Square Yard	Erosion Mat
0620	907-234-D001		5	Each	Inlet Siltation Guard
0630	907-237-A003		1,500	Linear Feet	Wattles, 20"
0640	907-246-B002		100	Each	Rockbags
0650	907-304-B007	(GT)	71	Ton	Granular Material, Class 5, Group E

Line No.	Item Code	Adj Code	Quantity	Units	Description [Fixed Unit Price]
0660	907-403-A019	(BA1)	26	Ton	19-mm, ST, Asphalt Pavement
0670	907-403-A029	(BA1)	26	Ton	19-mm, HT, Asphalt Pavement
0680	907-403-D010	(BA1)	11	Ton	9.5-mm, HT, Asphalt Pavement, Polymer Modified
0690	907-403-D011	(BA1)	19	Ton	12.5-mm, HT, Asphalt Pavement, Polymer Modified
0700	907-407-A001	(A2)	158	Gallon	Asphalt for Tack Coat
0710	907-601-B003	(S)	11	Cubic Yard	Class "B" Structural Concrete, Minor Structures
0720	907-618-A001		1	Lump Sum	Maintenance of Traffic
0730	907-619-E3001		9	Each	Changeable Message Sign
0740	907-626-A006		200	Linear Feet	6" Thermoplastic Double Drop Traffic Stripe, Skip White
0750	907-626-C007		200	Linear Feet	6" Thermoplastic Double Drop Edge Stripe, Continuous White
0760	907-626-G006		936	Linear Feet	Thermoplastic Double Drop Detail Stripe, White
0770	907-637-A001		2	Each	Equipment Cabinet, Type B
0780	907-637-B001		3	Each	ITS Equipment Cabinet Modifications
0790	907-657-A001		12,300	Linear Feet	Fiber Optic Cable, 72 SM
0800	907-657-B001		1,258	Linear Feet	Fiber Optic Drop Cable, 12 SM
0810	907-668-F001		1,258	Linear Feet	Traffic Signal Conduit Bank, Underground, Drilled or Jacked, Rolled Pipe, 2"
0820	907-668-F002		3,500	Linear Feet	Traffic Signal Conduit Bank, Underground, Drilled or Jacked, Rolled Pipe, 2 @ 2"
0830	907-668-G002		500	Linear Feet	Traffic Signal Conduit Bank, Aerial Supported, Type I, 2 @ 2"
0840	907-682-A1001		800	Linear Feet	Branch Circuit Wire, AWG #1, 3 Conductor
0850	907-682-A1007		500	Linear Feet	Branch Circuit Wire, AWG #4, 3 Conductor
0860	907-699-A002		1	Lump Sum	Roadway Construction Stakes
ALTERNATE GROUP AA NUMBER 1					
0870	907-304-F002	(GT)	117	Ton	Size 610 Crushed Stone Base
ALTERNATE GROUP AA NUMBER 2					
0880	907-304-F003	(GT)	117	Ton	3/4" and Down Crushed Stone Base
ALTERNATE GROUP AA NUMBER 3					
0890	907-304-F004	(GT)	117	Ton	Size 825B Crushed Stone Base

STATE	PROJECT NO.
MISS.	NHPP-9999-05(027)

DESCRIPTION OF SHEET

WKG. NO. SH. NO.

DESCRIPTION OF SHEET

WKG. NO. SH. NO.

TITLE SHEET (1)

1

DETAILED INDEX & GENERAL NOTES (3)

DETAILED INDEX
DETAILED INDEX
GENERAL NOTES

DI-1 2
DI-2 3
GN-1 4

QUANTITY SHEETS (13)

SUMMARY OF QUANTITIES - HINDS - 301000 (1 OF 2)
SUMMARY OF QUANTITIES - HINDS - 301000 (2 OF 2)
SUMMARY OF QUANTITIES - MADISON - 302000 (1 OF 2)
SUMMARY OF QUANTITIES - MADISON - 302000 (2 OF 2)
SUMMARY OF QUANTITIES - SCOTT - 303000
SUMMARY OF QUANTITIES - TOTALS (1 OF 3)
SUMMARY OF QUANTITIES - TOTALS (2 OF 3)
SUMMARY OF QUANTITIES - TOTALS (3 OF 3)

SQ-1 5
SQ-1A 5.1
SQ-2 6
SQ-3 7
SQ-4 8
SQ-5 9
SQ-6 10
SQ-7 10.1

ESTIMATED QUANTITIES - REMOVAL, JUNCTION BOX, PIPE, & EROSION ITEMS
ESTIMATED QUANTITIES - TRAFFIC CONTROL ITEMS
ESTIMATED QUANTITIES - TRAFFIC CONTROL SIGNS - HINDS - 301000
ESTIMATED QUANTITIES - TRAFFIC CONTROL SIGNS - MADISON - 302000
ESTIMATED QUANTITIES - TRAFFIC CONTROL SIGNS - SCOTT - 303000

EQ-1 11
EQ-2 12
EQ-3 13
EQ-4 14
EQ-5 15

SITE 1 - HINDS COUNTY (15)

LANDSLIDE AERIAL VIEW SITE 1
ITS RELOCATION SITE 1
CONSTRUCTION SEQUENCE & STABILIZATION PILE SCHEDULE SITE 1 I-20 EASTBOUND @ BRIDGE OVER GIBRALTER DRIVE
EXISTING CONDITIONS PLAN - SITE 1 LANDSLIDE REMEDIATION I-20 EB @ BRIDGE OVER GIBRALTER DRIVE
FINAL GRADING PLAN - SITE 1 LANDSLIDE REMEDIATION I-20 EB @ BRIDGE OVER GIBRALTER DRIVE
TYPICAL SECTION A-A' SITE 1 LANDSLIDE REMEDIATION I-20 EB @ BRIDGE OVER GIBRALTER DRIVE
TYPICAL SECTION B-B' SITE 1 LANDSLIDE REMEDIATION I-20 EB @ BRIDGE OVER GIBRALTER DRIVE
TYPICAL SECTION C-C' SITE 1 LANDSLIDE REMEDIATION I-20 EB @ BRIDGE OVER GIBRALTER DRIVE
DETAILS SITE 1 LANDSLIDE REMEDIATION I-20 EB @ BRIDGE OVER GIBRALTER DRIVE
SUBSURFACE SECTION A-A' SITE 1 LANDSLIDE REMEDIATION I-20 EB @ BRIDGE OVER GIBRALTER DRIVE
SUBSURFACE SECTION B-B' SITE 1 LANDSLIDE REMEDIATION I-20 EB @ BRIDGE OVER GIBRALTER DRIVE
SUBSURFACE SECTION C-C' SITE 1 LANDSLIDE REMEDIATION I-20 EB @ BRIDGE OVER GIBRALTER DRIVE
BORING LOGS (SHEET 1 OF 2) SITE 1 LANDSLIDE REMEDIATION I-20 EASTBOUND @ BRIDGE OVER GIBRALTER DRIVE
BORING LOGS (SHEET 2 OF 2) SITE 1 LANDSLIDE REMEDIATION I-20 EASTBOUND @ BRIDGE OVER GIBRALTER DRIVE
EROSION CONTROL PLAN SITE 1 LANDSLIDE REMEDIATION I-20 EASTBOUND @ BRIDGE OVER GIBRALTER DRIVE

LS-1 16
ITS-1 16.1
CS-1 17
PL-1 18
PL-2 19
TS-2a 20
TS-3a 21
TS-4a 22
DET-1 23
TS-2b 24
TS-3b 25
TS-4b 26
BL-1 27
BL-2 28
ECP-1 29

SITE 2 - HINDS COUNTY (11)

LANDSLIDE AERIAL VIEW SITE 2
CONSTRUCTION SEQUENCE & STABILIZATION PILE SCHEDULE SITE 2 I-220 RAMP 2 INTERCHANGE AT I-20 WESTBOUND
EXISTING CONDITIONS PLAN - SITE 2 LANDSLIDE REMEDIATION I-220 RAMP B INTERCHANGE AT I-20 WESTBOUND
FINAL GRADING PLAN - SITE 2 LANDSLIDE REMEDIATION I-220 RAMP B INTERCHANGE AT I-20 WESTBOUND
TYPICAL SECTION A-A' TEMPORARY CONDITIONS 1 SITE 2 LANDSLIDE REMEDIATION I-220 RAMP B INTERCHANGE AT I-20 WB
TYPICAL SECTION A-A' TEMPORARY CONDITIONS 2 SITE 2 LANDSLIDE REMEDIATION I-220 RAMP B INTERCHANGE AT I-20 WB
TYPICAL SECTION A-A' FINAL CONDITIONS SITE 2 LANDSLIDE REMEDIATION I-220 RAMP B INTERCHANGE AT I-20 WB
DETAILS SITE 2 LANDSLIDE REMEDIATION I-220 RAMP B INTERCHANGE AT I-20 WB
SUBSURFACE SECTION A-A' SITE 2 LANDSLIDE REMEDIATION I-220 RAMP B INTERCHANGE AT I-20 WESTBOUND
BORING LOGS SITE 2 LANDSLIDE REMEDIATION I-220 RAMP B INTERCHANGE AT I-20 WESTBOUND
EROSION CONTROL PLAN SITE 2 LANDSLIDE REMEDIATION I-220 RAMP B INTERCHANGE AT I-20 WESTBOUND

LS-2 30
CS-2 31
PL-3 32
PL-4 33
TS-7a 34
TS-7b 35
TS-7c 36
DET-2 37
TS-8 38
BL-3 39
ECP-2 40

SITE 6 - HINDS COUNTY (8)

LANDSLIDE AERIAL VIEW SITE 6
CONSTRUCTION SEQUENCE SITE 6 LANDSLIDE REMEDIATION I-220 RAMP A INTERCHANGE AT BRIDGE #0.2
EXISTING CONDITIONS - SITE 6 LANDSLIDE REMEDIATION I-220 RAMP A INTERCHANGE AT BRIDGE #0.2
FINAL GRADING PLAN - SITE 6 LANDSLIDE REMEDIATION I-220 RAMP A INTERCHANGE AT BRIDGE #0.2
TYPICAL SECTION A-A' SITE 6 LANDSLIDE REMEDIATION I-220 RAMP A INTERCHANGE AT BRIDGE #0.2
SUBSURFACE SECTION A-A' SITE 6 LANDSLIDE REMEDIATION I-220 RAMP A INTERCHANGE AT BRIDGE #0.2
BORING LOGS SITE 6 LANDSLIDE REMEDIATION I-220 RAMP A INTERCHANGE AT BRIDGE #0.2
EROSION CONTROL PLAN SITE 6 LANDSLIDE REMEDIATION I-220 RAMP A INTERCHANGE AT BRIDGE #0.2

LS-6 41
CS-3 42
PL-5 43
PL-6 44
TS-10 45
TS-11 46
BL-4 47
ECP-6 48

SITE 4 - MADISON COUNTY (14)

LANDSLIDE AERIAL VIEW SITE 4
ITS RELOCATION SITE 4
CONSTRUCTION SEQUENCE & STABILIZATION PILE SCHEDULE SITE 4 I-220 RAMP TO NB I-55
EXISTING CONDITIONS PLAN - SITE 4 LANDSLIDE REMEDIATION I-220 RAMP TO NB I-55
FINAL GRADING PLAN - SITE 4 LANDSLIDE REMEDIATION I-220 RAMP TO NB I-55
TYPICAL SECTION - I-220 SITE 4 SLIDE REPAIR
TYPICAL SECTION A-A' TEMPORARY CONDITIONS 1 SITE 4 LANDSLIDE REMEDIATION I-220 RAMP TO NB I-55
TYPICAL SECTION A-A' TEMPORARY CONDITIONS 2 SITE 4 LANDSLIDE REMEDIATION I-220 RAMP TO NB I-55
TYPICAL SECTION A-A' FINAL CONDITIONS SITE 4 LANDSLIDE REMEDIATION I-220 RAMP TO NB I-55
DETAILS SITE 4 LANDSLIDE REMEDIATION I-220 RAMP TO NB I-55
SUBSURFACE SECTION A-A' SITE 4 LANDSLIDE REMEDIATION I-220 RAMP TO NB I-55
BORING LOGS SITE 4 LANDSLIDE REMEDIATION I-220 RAMP TO NB I-55
HYDRAULICS PLAN SITE 4 LANDSLIDE REMEDIATION I-220 RAMP TO NB I-55
EROSION CONTROL PLAN SITE 4 LANDSLIDE REMEDIATION I-220 RAMP TO NB I-55

LS-4 49
ITS-4 49.1
CS-4 50
PL-7 51
PL-8 52
TS-12 53
TS-13a 54
TS-13b 55
TS-13c 56
DET-3 57
TS-14 58
BL-5 59
PL-9 60
ECP-4 61

SITE 5 - MADISON COUNTY (13)

LANDSLIDE AERIAL VIEW SITE 5
CONSTRUCTION SEQUENCE & STABILIZATION PILE SCHEDULE SITE 5 NW I-55 RAMP AT SOWELL RD.
EXISTING CONDITIONS PLAN - SITE 5 LANDSLIDE REMEDIATION NW I-55 RAMP AT SOWELL RD.
FINAL GRADING PLAN - SITE 5 LANDSLIDE REMEDIATION NW I-55 RAMP AT SOWELL RD.
TYPICAL SECTION - I-55 SITE 5 - SOWELL RD. SLIDE REPAIR
TYPICAL SECTION A-A' SITE 5 LANDSLIDE REMEDIATION NW I-55 RAMP AT SOWELL RD.
TYPICAL SECTION B-B' SITE 5 LANDSLIDE REMEDIATION NW I-55 RAMP AT SOWELL RD.
DETAILS SITE 5 LANDSLIDE REMEDIATION NW I-55 RAMP AT SOWELL RD.
SUBSURFACE SECTION A-A' SITE 5 LANDSLIDE REMEDIATION NW I-55 RAMP AT SOWELL RD.
SUBSURFACE SECTION B-B' SITE 5 LANDSLIDE REMEDIATION NW I-55 RAMP AT SOWELL RD.
BORING LOGS SITE 5 LANDSLIDE REMEDIATION NW I-55 RAMP AT SOWELL RD.
HYDRAULICS PLAN SITE 5 LANDSLIDE REMEDIATION NW I-55 RAMP AT SOWELL RD.
EROSION CONTROL PLAN SITE 5 LANDSLIDE REMEDIATION NW I-55 RAMP AT SOWELL RD.

LS-5 62
CS-5 63
PL-10 64
PL-11 65
TS-15 66
TS-16 67
TS-17 68
DET-4 69
TS-18 70
TS-19 71
BL-6 72
PL-12 73
ECP-5 74


SITE 7 - SCOTT COUNTY (13)

LANDSLIDE AERIAL VIEW SITE 7
CONSTRUCTION SEQUENCE SITE 7 LANDSLIDE REMEDIATION U.S. ROUTE 25
EXISTING CONDITIONS PLAN - SITE 7 LANDSLIDE REMEDIATION U.S. ROUTE 25
FINAL GRADING PLAN (1 OF 2) - SITE 7 LANDSLIDE REMEDIATION U.S. ROUTE 25
FINAL GRADING PLAN (2 OF 2) - SITE 7 LANDSLIDE REMEDIATION U.S. ROUTE 25
TYPICAL SECTION A-A' SITE 7 LANDSLIDE REMEDIATION U.S. ROUTE 25
TYPICAL SECTION B-B' SITE 7 LANDSLIDE REMEDIATION U.S. ROUTE 25
DETAILS SITE 7 LANDSLIDE REMEDIATION U.S. ROUTE 25
SUBSURFACE SECTION A-A' SITE 7 LANDSLIDE REMEDIATION U.S. ROUTE 25
SUBSURFACE SECTION B-B' SITE 7 LANDSLIDE REMEDIATION U.S. ROUTE 25
BORING LOGS (1 OF 2) SITE 7 LANDSLIDE REMEDIATION U.S. ROUTE 25
BORING LOGS (2 OF 2) SITE 7 LANDSLIDE REMEDIATION U.S. ROUTE 25
EROSION CONTROL PLAN SITE 7 LANDSLIDE REMEDIATION U.S. ROUTE 25

LS-7 75
CS-6 76
PL-13 77
PL-14 78
PL-15 79
TS-21 80
TS-22 81
DET-5 82
TS-23 83
TS-24 84
BL-7 85
BL-8 86
ECP-7 87

KIRBY

PS & E PLANS - 2/7/17		
FMS CON. #	107258/301000 107258/302000 107258/303000	
REVISIONS		
DATE	SHEET NO.	BY
2/22/17	1-3,5-10,12-13,20-22,35-36,44,50,53,55,60,63,65,67-68,73,78,88-90,93	BFL
3/15/17	2-3,5-7,10,(16,1),31,(49,1)-50,90	BFL

MISSISSIPPI DEPARTMENT OF TRANSPORTATION			
DETAILED INDEX			
			
PROJ. NO.: NHPP-9999-05(027) COUNTY: HINDS, MADISON, & SCOTT		WORKING NUMBER DI-1	
FILENAME: DI-GN-107258.DGN DESIGN TEAM KIRBY CHECKED _____ DATE _____			
SHEET NUMBER 2			

3/17/2017 1:53 PM DI-GN-107258.DGN

STATE	PROJECT NO.
MISS.	NHPP-9999-05(027)

DESCRIPTION OF SHEET	WKG. NO.	SH. NO.	DESCRIPTION OF SHEET	DATE	WKG. NO.	SH. NO.
SPECIAL DESIGN SHEETS (39)			STANDARD DRAWINGS - ROADWAY SHEETS (15)			
DETAIL OF CONSTRUCTION SIGNING SITE 1	DCS-1	88	PAVEMENT MARKING DETAILS FOR 2-LANE AND 4-LANE DIVIDED HIGHWAYS	12/1/1999	PM-1	6120
DETAIL OF CONSTRUCTION SIGNING SITE 2 AND SITE 6	DCS-2	89	4-LANE TO 2-LANE TRANSITION AT INTERCHANGE	10/1/1998	PM-8	6127
DETAIL OF CONSTRUCTION SIGNING - SITE 4	DCS-3	90	FENCE: CHAIN LINK CLASS I	3/1/2002	CL-1	6162
DETAIL OF CONSTRUCTION SIGNING - SITE 5	DCS-4	91	TRAFFIC CONTROL PLAN WITH FLAGGER (ONE-LANE CLOSURE OF TWO-WAY TRAFFIC)	10/1/1998	TCP-1	6250
DETAIL OF CONSTRUCTION SIGNING - SITE 7	DCS-5	92	TRAFFIC CONTROL PLAN FOR POSTED SPEED LIMIT LESS THAN 65 MPH (4-LANE: MEDIAN LANE OR OUTSIDE LANE CLOSURE) (EXTENDED PERIOD) - SITES 2 AND 4	10/1/1998	TCP-2	6251
TRAFFIC CONTROL PLAN FOR POSTED SPEED LIMIT LESS THAN 65 MPH - SITE 6	TC-1	93	TRAFFIC CONTROL PLAN FOR POSTED SPEED LIMIT OF 65 OR 70 MPH (INTERSTATES AND OTHER 4-LANE DIVIDED HIGHWAYS)(MEDIAN LANE OR OUTSIDE LANE CLOSURE) (EXTENDED PERIOD) - SITE 7	10/1/1998	TCP-5	6254
TRAFFIC CONTROL PLAN FOR POSTED SPEED LIMIT LESS THAN 65 MPH (4-LANE: MEDIAN LANE OR OUTSIDE LANE CLOSURE) (EXTENDED PERIOD) - SITES 2 AND 4	SDTCP-3	94	TRAFFIC CONTROL PLAN FOR POSTED SPEED LIMIT OF 65 OR 70 MPH (INTERSTATES AND OTHER 4-LANE DIVIDED HIGHWAYS)(MEDIAN LANE OR OUTSIDE LANE CLOSURE) (EXTENDED PERIOD)	10/1/1998	GT-1	6272
TRAFFIC CONTROL PLAN FOR POSTED SPEED LIMIT OF 65 OR 70 MPH (INTERSTATES AND OTHER 4-LANE DIVIDED HIGHWAYS)(MEDIAN LANE OR OUTSIDE LANE CLOSURE) (EXTENDED PERIOD) - SITE 7	SDTCP-4	95	TYPICAL GRADING TRANSITION BETWEEN CUTS AND FILLS	10/1/1998	MDS-1	6290
TRAFFIC CONTROL DETAILS DRUM PLACEMENT AND SHOULDER CLOSURE - SITE 1	TCP-SC	96	MISCELLANEOUS DETAIL SHEET 1. STACKED PIPE JOINT 2. EXCAVATION AT GRADE POINTS	10/1/1998	PI-1	6300
HIGHWAY SIGN AND BARRICADE DETAILS FOR CONSTRUCTION PROJECTS	SDTCP-10	97	PIPE CULVERT INSTALLATION	10/1/1998	PC-1	6301
PAVEMENT MARKING DETAIL - SITE 5 I-55 SB TO SOWELL RD.	PMD-1	98	CONCRETE PIPE COLLAR	10/1/1998	JB-1	6302
CONTROL POINTS	CP-1	99	JUNCTION BOX FOR PIPE CULVERTS	10/1/1998	IG-2	6315
FENCE: TYPICAL INSTALLATION AT BRIDGES	SDFI-1	100	DETAILS OF GRATES FOR GUTTER INLETS	10/1/1998	FE-1	6328
DETAILS OF TYPICAL DITCH TREATMENTS	DT-1	101	FLARED END SECTION FOR CONCRETE PIPE	10/1/1998	UD-1	6331
EROSION CONTROL	EC-1	102	DETAILS OF NORMAL UNDERDRAIN AND STORM DRAIN USED AS UNDERDRAIN	10/1/1998	UD-2	6332
TYPICAL TEMPORARY EROSION / SEDIMENT - CONTROL APPLICATIONS	ECD-1	103	NORMAL UNDERDRAIN TYPE II	10/1/1998		
DETAIL OF SEDIMENT BARRIER APPLICATIONS	ECD-2	104				
DETAIL OF SILT FENCE INSTALLATION	ECD-3	105				
DITCH CHECK STRUCTURES, TYPICAL APPLICATIONS AND DETAILS	ECD-4	106				
TEMP. EROSION, SEDIMENT & WATER POLLUTION CTRL MEASURES, SILT FENCE & HAY BALE DITCH CHECKS	ECD-5	107				
DETAILS OF EROSION CONTROL WATTLE DITCH CHECK	ECD-6	108				
DETAIL OF EROSION CONTROL SILT DIKE DITCH CHECK	ECD-7	109				
ROCK DITCH CHECK	ECD-8	110				
ROCK FILTER DAM	ECD-9	111				
ROCK DITCH CHECK WITH SUMP EXCAVATION	ECD-10	112				
INLET PROTECTION TYPICAL APPLICATIONS AND DETAIL	ECD-11	113				
INLET PROTECTION DETAILS FOR COARSE AGGREGATE ON GRADES AND SAGS	ECD-12	114				
INLET PROTECTION DETAILS OF WATTLES	ECD-13	115				
INLET PROTECTION DETAILS OF MANUFACTURED INLET PROTECTION DEVICE	ECD-14	116				
INLET PROTECTION DETAILS OF SAND BAG	ECD-15	117				
STABILIZED CONSTRUCTION ENTRANCE	ECD-16	118				
TEMPORARY CULVERT STREAM CROSSING	ECD-17	119				
TEMPORARY STREAM DIVERSION	ECD-18	120				
TEMPORARY STREAM DIVERSION (BOX EXTENSIONS)	ECD-19	121				
FLOATING TURBIDITY CURTAIN	ECD-20	122				
DETAILS OF EROSION CONTROL SANDBAG DITCH CHECK	ECD-21	123				
SEDIMENT RETENTION BARRIER	ECD-22	124				
TYPICAL TEMPORARY EROSION CONTROL MEASURES (SLOPE DRAIN AND TYPE A SILT BASIN)	TEC-2	125				
VEGETATION SCHEDULE	VS-1	126				

CROSS SECTIONS (32)

HINDS - SITE 1	9001-9004
HINDS - SITE 2	9005-9009
HINDS - SITE 6	9010-9013
MADISON - SITE 4	9014-9019
MADISON - SITE 5	9022-9028
SCOTT - SITE 7	9029-9032

TOTAL SHEETS: 177 ¹/₁ ²/₂

3/17/2017 9:12 AM DI-GN-107258.DGN

MISSISSIPPI DEPARTMENT OF TRANSPORTATION			
DETAILED INDEX			
PROJ. NO.: NHPP-9999-05(027) COUNTY: HINDS, MADISON, & SCOTT		WORKING NUMBER DI-2	
FILENAME: DI-GN-107258.DGN DESIGN TEAM: KIRBY		SHEET NUMBER 3	




ADDENDUM

STATE	PROJECT NO.
MISS	NHPP-9999-05(027) /NHPP-9999-05(027)/NHPP-9999-05(027)

SUMMARY OF QUANTITIES (SHEET 1)

PAY ITEM NO.	PAY ITEM	UNIT	HINDS : 107258-301000		
			Prelim	Final	
201-A001	Clearing and Grubbing	LS	1		② ⑤ △
202-B025	Removal of Concrete Paved Ditch	SY	298		⑬
202-B041	Removal of Fence, All Types	LF	300		② △
202-B076	Removal of Traffic Stripe	LF	936		⑨ △
202-B135	Removal of Guard Rail Double Faced Rail Including Rail & Posts	LF	75		②
202-B146	Removal of Existing Wiring	LF	800		⑨ △
203-EX040	Borrow Excavation, AH, LVM, Class B9-6	CY	2,121		① △
203-G004	Excess Excavation, LVM, AH	CY	4,202		⑥
206-A001	Structure Excavation	CY	32		②
206-B001	Select Material for Undercuts, Contractor Furnished, FM	CY	9		②
213-C001	Superphosphate	TON	1		⑩ △
907-216-A001	Solid Sodding	SY	135		④
217-A001	Ditch Liner	SY	31		⑰ △
219-A001	Watering	KGAL	3		⑪
220-A001	Insect Pest Control	ACRE	1		⑬ △
907-225-A001	Grassing	ACRE	2		⑬ △
907-225-B001	Agricultural Limestone	TON	1		⑩ △
907-225-C001	Mulch, Vegetative Mulch	TON	3		⑫ △
907-226-A001	Temporary Grassing	ACRE	2		⑰ △
907-229-A001	Erosion Mat	SY	366		③
234-A001	Temporary Silt Fence	LF	260		⑰ △
907-237-A003	Wattles, 20"	LF	246		⑧ ⑰ △
907-246-B002	Rockbags	EA	24		⑦ ⑰ △
907-601-B003	Class "B" Structural Concrete, Minor Structures	CY	3		②
602-A001	Reinforcing Steel	LBS	106		②
603-CA007	48" Reinforced Concrete Pipe, Class III	LF	24		②
603-CB006	48" Reinforced Concrete End Section	EA	1		②
607-B001	60" Type I Chain Link Fence, Class I	LF	220		②
607-P1007	Line Post, 7' x 1 1/2" Galvanized Steel	EA	19		②
607-P2009	Brace Post, 8' x 2 1/2" Galvanized Steel	EA	7		②
607-P2011	Brace Post, 10' x 2 1/2" Galvanized Steel	EA	2		②
607-P2012	Brace Post, 12' x 2 1/2" Galvanized Steel	EA	1		②
907-618-A001	Maintenance of Traffic	LS	1		② ⑤ ⑨
619-A1001	Temporary Traffic Stripe, Continuous White	LF	1,112		⑨ △
619-D1001	Standard Roadside Construction Signs, Less than 10 Square Feet	SF	80		△
619-D2001	Standard Roadside Construction Signs, 10 Square Feet or More	SF	416		△
907-619-E3001	Changeable Message Sign	EA	7		⑭ △
619-G4001	Barricades, Type III, Single Faced	LF	80		⑮ △
620-A001	Mobilization	LS	1		② ⑤ ⑨
907-626-G006	Thermoplastic Double Drop Detail Stripe, White	LF	936		⑨ △
907-637-A001	Equipment Cabinet, Type B	EA	1		② △ △
907-637-B001	ITS Equipment Cabinet Modifications	EA	1		② △ △
907-657-A001	Fiber Optic Cable, 72 SM	LF	200		② △ △
907-657-B001	Fiber Optic Drop Cable, 12 SM	LF	200		② △ △

- △ △ ① 837 CY IS FOR SITE 1, AND 1,284 CY IS FOR SITE 2.
- ② SITE 1
- ③ 250 SY IS FOR SITE 1, AND 116 SY IS FOR SITE 2.
- ④ 90 SY IS FOR SITE 1, AND 45 SY IS FOR SITE 2.
- △ ⑤ SITE 2
- △ ⑥ 108 CY IS FOR SITE 1; 1,445 CY IS FOR SITE 2; AND 2,649 IS FOR SITE 6.
- △ ⑦ USE 12 FOR SITE 1 AND 12 FOR SITE 2 OR AS NEEDED.
- △ ⑧ USE 123 FOR SITE 1 AND 123 FOR SITE 2 OR AS NEEDED.
- △ ⑨ SITE 6
- △ ⑩ 0.13 TON IS FOR SITE 1; 0.13 TON IS FOR SITE 2; AND 0.32 TON IS FOR SITE 6.
- △ ⑪ 2 KGAL IS FOR SITE 1, AND 1 KGAL IS FOR SITE 2.
- △ ⑫ 0.52 TON IS FOR SITE 1; 0.52 TON IS FOR SITE 2; AND 1.27 TONS IS FOR SITE 6.
- △ ⑬ 0.26 AC IS FOR SITE 1; 0.26 AC IS FOR SITE 2; AND 0.64 AC IS FOR SITE 6.
- △ ⑭ 4 ARE FOR SITE 1; 2 ARE FOR SITE 2; AND 1 IS FOR SITE 6.
- △ ⑮ 32 LF IS FOR SITE 1; 32 LF IS FOR SITE 2; AND 16 LF IS FOR SITE 6.
- △ ⑯ 178 SY IS FOR SITE 1, AND 120 SY IS FOR SITE 2.
- △ ⑰ TO BE USED AS DIRECTED BY ENGINEER.

ADDED PAY ITEMS, DELETED PAY ITEMS, & MODIFIED QUANTITIES	BL	By	MISSISSIPPI DEPARTMENT OF TRANSPORTATION SUMMARY OF QUANTITIES
	BL	By	
EDITED FOOTNOTE AND QUANTITIES			 Working Number SQ-1
Date			
02/22/2017			Proj No: NHPP-9999-05(027) County: HINDS
03/15/2017			FILENAME : SQS_107258 Design Team KIRBY Checked inclu Date 3/15/17
			Sheet Number 5

ADDENDUM


STATE	PROJECT NO.
MISS	NHPP-9999-05(027) /NHPP-9999-05(027)/NHPP-9999-05(027)

SUMMARY OF QUANTITIES (SHEET 2)

PAY ITEM NO.	PAY ITEM	UNIT	HINDS : 107258-301000		
			Prelim	Final	
666-B038	Electric Cable, Underground in Conduit, THHN, AWG #4, 3 Conductor	LF	200		① △ △
668-A018	Traffic Signal Conduit, Underground, Type 4, 2"	LF	110		⑤ △
907-668-F001	Traffic Signal Conduit Bank, Underground, Drilled or Jacked,Rolled Pipe, 2"	LF	200		① △ △
907-682-A1001	Branch Circuit Wire, AWG #1, 3 Conductor	LF	800		⑤ △
907-699-A002	Roadway Construction Stakes	LS	1		① ④ ⑤
803-D003	HP 14 x 73 Steel Piling	LF	1,295		④
815-A006	Loose Riprap, Size 100	TON	44		②
815-E001	Geotextile under Riprap	SY	81		③ △

- △ ① SITE 1
- △ ② 22 TONS IS FOR SITE 1, AND 22 TONS IS FOR SITE 2.
- △ ③ 45 SY IS FOR SITE 1, AND 36 SY IS FOR SITE 2.
- △ ④ SITE 2
- △ ⑤ SITE 6



ADDED PAY ITEMS, DELETED PAY ITEMS, & MODIFIED QUANTITIES EDITED FOOTNOTE AND QUANTITIES		BL BL By	MISSISSIPPI DEPARTMENT OF TRANSPORTATION SUMMARY OF QUANTITIES
02/22/2017 03/15/2017		Date Revision	
Proj No: NHPP-9999-05(027) County: HINDS			 Working Number SQ-1A
FILENAME : SQS_107258 Design Team KIRBY			Sheet Number 5.1
Checked inclu Date 3/15/12			

ADDENDUM

STATE	PROJECT NO.
MISS	NHPP-9999-05(027) /NHPP-9999-05(027)/NHPP-9999-05(027)

SUMMARY OF QUANTITIES (SHEET 3)

PAY ITEM NO.	PAY ITEM	UNIT	MADISON : 107258-302000		
			Prelim	Final	
201-A001	Clearing and Grubbing	LS	1		③ ④
202-B005	Removal of Asphalt Pavement, All Depths	SY	1,050		④ ①
202-B025	Removal of Concrete Paved Ditch	SY	749		⑤
202-B038	Removal of Curb, All Types	LF	450		③
202-B064	Removal of Pipe, 8" And Above	LF	634		③
202-B134	Removal of Guard Rail, Including Rails & Posts	LF	220		③
202-B146	Removal of Existing Wiring	LF	500		④ ①
202-B247	Removal of Pull Box	EA	1		③
203-EX040	Borrow Excavation, AH, LVM, Class B9-6	CY	3,509		① ①
203-G004	Excess Excavation, LVM, AH	CY	4,219		②
204-A008	Geogrid, Type VI, Uniaxial	SY	2,486		④ ⑩ ①
209-A004	Geotextile Stabilization, Type V, Non-Woven	SY	166		④ ①
211-B001	Topsoil for Slope Treatment, Contractor Furnished	CY	850		⑪
213-C001	Superphosphate	TON	1		⑭ ①
907-216-A001	Solid Sodding	SY	520		⑥
217-A001	Ditch Liner	SY	34		⑱ ①
219-A001	Watering	KGAL	11		⑮
220-A001	Insect Pest Control	ACRE	1		⑯ ①
221-A001	Portland Cement Concrete Paved Ditch	CY	49		③ ①
907-225-A001	Grassing	ACRE	2		⑬ ①
907-225-B001	Agricultural Limestone	TON	1		⑭ ①
907-225-C001	Mulch, Vegetative Mulch	TON	3		⑰ ①
907-226-A001	Temporary Grassing	ACRE	2		⑱ ①
907-229-A001	Erosion Mat	SY	4,000		④
234-A001	Temporary Silt Fence	LF	700		⑱
907-234-D001	Inlet Siltation Guard	EA	5		③ ⑱
907-237-A003	Wattles, 20"	LF	628		⑦ ⑱ ①
907-246-B002	Rockbags	EA	46		⑧ ⑱ ①
907-304-B007	Granular Material, Class 5, Group E	TON	71		④ ⑨ ①
907-304-F002	Size 610 Crushed Stone Base	TON	117		④
	OR				
907-304-F003	3/4" and Down Crushed Stone Base	TON	117		④
	OR				
907-304-F004	Size 825B Crushed Stone Base	TON	117		④
907-403-A019	19-mm, ST, Asphalt Pavement	TON	26		④
907-403-A029	19-mm, HT, Asphalt Pavement	TON	26		④
907-403-D010	9.5-mm, HT, Asphalt Pavement, Polymer Modified	TON	11		④
907-403-D011	12.5-mm, HT, Asphalt Pavement, Polymer Modified	TON	19		④
907-407-A001	Asphalt for Tack Coat	GAL	158		④ ①
503-C007	Saw Cut, Full Depth	LF	175		④
907-601-B003	Class "B" Structural Concrete, Minor Structures	CY	8		③ ⑱ ①
602-A001	Reinforcing Steel	LBS	515		③ ⑳ ①
603-CA004	30" Reinforced Concrete Pipe, Class III	LF	576		③
606-B007	Guard Rail, Class A, Type 1, 'W' Beam, Metal Post	LF	200		③ ⑫

- ② ① ① 1,642 CY IS FOR SITE 4, AND 1,867 CY IS FOR SITE 5.
- ② 1,871 CY IS FOR SITE 4, AND 2,348 CY IS FOR SITE 5.
- ③ SITE 4
- ④ SITE 5
- ⑤ 667 SY IS FOR SITE 4, AND 82 SY IS FOR SITE 5.
- ⑥ 90 SY IS FOR SITE 4, AND 430 SY IS FOR SITE 5.
- ① ⑦ USE 370 LF FOR SITE 1 AND 258 LF FOR SITE 2 OR AS NEEDED.
- ① ⑧ USE 26 FOR SITE 4 AND 20 FOR SITE 5 OR AS NEEDED.
- ⑨ INCLUDES A 20% INCREASE FROM CALCULATED QUANTITY.
- ⑩ 2,237 SY IS FOR LANDSLIDE REMEDIATION, AND 249 SY IS FOR SHOULDER REPLACEMENT.
- ① ⑪ 470 CY IS FOR SITE 4, AND 380 CY IS FOR SITE 5.
- ① ⑫ CONTRACTOR WILL BE REQUIRED TO SAWCUT AND BLOCK OUT FOR GUARDRAIL POSTS AND BACKFILL WITH CONCRETE, WHICH WILL BE ABSORBED BY OTHER ITEMS BID.
- ① ⑬ 0.78 AC IS FOR SITE 4, AND 0.54 AC IS FOR SITE 5.
- ① ⑭ 0.39 TONS IS FOR SITE 4, AND 0.27 TONS IS FOR SITE 5.
- ① ⑮ 2 KGAL IS FOR SITE 4, AND 9 KGAL IS FOR SITE 5.
- ① ⑯ 0.39 AC IS FOR SITE 4, AND 0.27 AC IS FOR SITE 5.
- ① ⑰ 1.55 TONS IS FOR SITE 4, AND 1.08 TONS IS FOR SITE 5.
- ① ⑱ TO BE USED AS DIRECTED BY ENGINEER.
- ① ⑲ 1.41 CY IS FOR JB-1, AND 6.0 CY IS FOR PIPE CULVERT.
- ① ⑳ 90.5 LB IS FOR JB-1, AND 424.0 LB IS FOR PIPE CULVERT.

MISSISSIPPI DEPARTMENT OF TRANSPORTATION			
SUMMARY OF QUANTITIES			
ADDED PAY ITEMS, DELETED PAY ITEMS, & MODIFIED QUANTITIES	BL	BL	By
	EDITED FOOTNOTE AND QUANTITIES		
02/22/2017	Date	Revision	
	Proj No: NHPP-9999-05(027) County: MADISON		
03/15/2017	Date	Checked	includ Date 3/15/17
	FILENAME : SQS_107258		
			Working Number SQ-2 Sheet Number 6


ADDENDUM

STATE	PROJECT NO.
MISS	NHPP-9999-05(027) /NHPP-9999-05(027)/NHPP-9999-05(027)

SUMMARY OF QUANTITIES (SHEET 4)

PAY ITEM NO.	PAY ITEM	UNIT	MADISON : 107258-302000		
			Prelim	Final	
606-C002	Guard Rail, Cable Anchor Type 1, Metal Post	EA	1		②
606-E003	Guard Rail, Terminal End Section, Non-Flared	EA	1		②
907-618-A001	Maintenance of Traffic	LS	1		② ③
619-A1003	Temporary Traffic Stripe, Continuous White, Paint	LF	200		③
619-A2003	Temporary Traffic Stripe, Continuous Yellow, Paint	LF	200		③
619-D1001	Standard Roadside Construction Signs, Less than 10 Square Feet	SF	25		
619-D2001	Standard Roadside Construction Signs, 10 Square Feet or More	SF	144		
907-619-E3001	Changeable Message Sign	EA	1		②
619-F3003	Delineators, Guard Rail, Yellow	EA	7		②
619-G4001	Barricades, Type III, Single Faced	LF	16		②
619-G5001	Free Standing Plastic Drums	EA	9		③
620-A001	Mobilization	LS	1		
907-626-A006	6" Thermoplastic Double Drop Traffic Stripe, Skip White	LF	200		③
907-626-C007	6" Thermoplastic Double Drop Edge Stripe, Continuous White	LF	200		③
907-637-A001	Equipment Cabinet, Type B	EA	1		② ⚠
907-637-B001	ITS Equipment Cabinet Modifications	EA	2		② ⚠ ⚠
647-A003	Pullbox, Type 4	EA	2		② ⚠
647-A004	Pullbox, Type 5	EA	1		② ⚠
647-A005	Pullbox, Type 2	EA	1		② ⚠
907-657-A001	Fiber Optic Cable, 72 SM	LF	12,100		④ ⚠
907-657-B001	Fiber Optic Drop Cable, 12 SM	LF	1,058		② ⚠
668-A014	Traffic Signal Conduit, Underground, Type 4, 1 1/2"	LF	50		③ ⚠
907-668-F001	Traffic Signal Conduit Bank, Underground, Drilled or Jacked,Rolled Pipe, 2"	LF	1,058		② ⚠
907-668-F002	Traffic Signal Conduit Bank, Underground, Drilled or Jacked,Rolled Pipe, 2 @ 2"	LF	3,500		② ⚠
907-668-G002	Traffic Signal Conduit Bank, Aerial Supported, Type I, 2 @ 2"	LF	500		② ⚠
907-682-A1007	Branch Circuit Wire, AWG #4, 3 Conductor	LF	500		③ ⚠
803-D003	HP 14 x 73 Steel Piling	LF	4,155		①
815-A006	Loose Riprap, Size 100	TON	350		③
815-E001	Geotextile under Riprap	SY	1,010		③ ⚠

- ① 1,715 LF IS FOR SITE 4, AND 2,440 LF IS FOR SITE 5.
- ② SITE 4
- ③ SITE 5
- ⚠ ④ 3,500 LF IS FOR SITE 4, AND 8,600 LF IS TO REPAIR DAMAGED FIBER AT THE HIGHLAND COLONY/HANGING MOSS EXIT.

⚠ ⚠ ADDED PAY ITEMS, DELETED PAY ITEMS, & MODIFIED QUANTITIES EDITED FOOTNOTE AND QUANTITIES Date: 02/22/2017 By:		MISSISSIPPI DEPARTMENT OF TRANSPORTATION SUMMARY OF QUANTITIES Proj No: NHPP-9999-05(027) County: MADISON FILENAME : SQS_107258 Design Team KIRBY		 Working Number SQ-3 Sheet Number 7	
		Checked inclu Date 3/15/12			

ADDENDUM

STATE	PROJECT NO.
MISS	NHPP-9999-05(027) /NHPP-9999-05(027)/NHPP-9999-05(027)

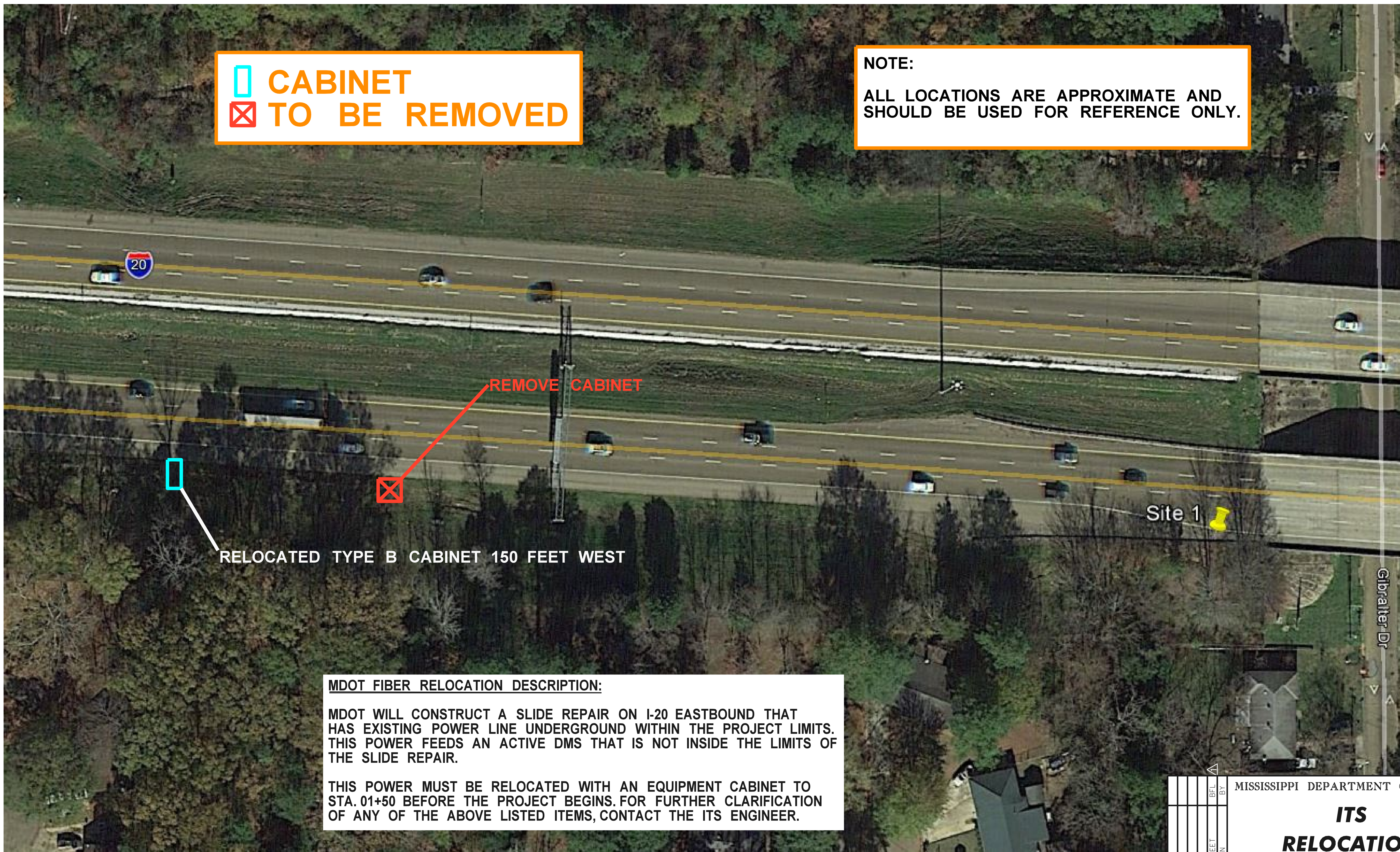
SUMMARY OF QUANTITIES (SHEET 7)

PAY ITEM NO.	PAY ITEM	UNIT	Total Amount		
			Prelim	Final	
503-C007	Saw Cut, Full Depth	LF	175		
907-601-B003	Class "B" Structural Concrete, Minor Structures	CY	11		⚠
602-A001	Reinforcing Steel	LBS	621		⚠
603-CA004	30" Reinforced Concrete Pipe, Class III	LF	576		
603-CA007	48" Reinforced Concrete Pipe, Class III	LF	24		
603-CB006	48" Reinforced Concrete End Section	EA	1		
606-B007	Guard Rail, Class A, Type 1, 'W' Beam, Metal Post	LF	200		
606-C002	Guard Rail, Cable Anchor Type 1, Metal Post	EA	1		
606-E003	Guard Rail, Terminal End Section, Non-Flared	EA	1		
607-B001	60" Type I Chain Link Fence, Class I	LF	220		
607-P1007	Line Post, 7' x 1 1/2" Galvanized Steel	EA	19		
607-P2009	Brace Post, 8' x 2 1/2" Galvanized Steel	EA	7		
607-P2011	Brace Post, 10' x 2 1/2" Galvanized Steel	EA	2		
607-P2012	Brace Post, 12' x 2 1/2" Galvanized Steel	EA	1		
907-618-A001	Maintenance of Traffic	LS	1		⚠
619-A1001	Temporary Traffic Stripe, Continuous White	LF	1,112		⚠
619-A1003	Temporary Traffic Stripe, Continuous White, Paint	LF	200		
619-A2003	Temporary Traffic Stripe, Continuous Yellow, Paint	LF	200		
619-D1001	Standard Roadside Construction Signs, Less than 10 Square Feet	SF	121		⚠
619-D2001	Standard Roadside Construction Signs, 10 Square Feet or More	SF	656		⚠
907-619-E3001	Changeable Message Sign	EA	9		⚠
619-F3003	Delineators, Guard Rail, Yellow	EA	7		
619-G4001	Barricades, Type III, Single Faced	LF	112		⚠
619-G5001	Free Standing Plastic Drums	EA	9		
620-A001	Mobilization	LS	1		
907-626-A006	6" Thermoplastic Double Drop Traffic Stripe, Skip White	LF	200		
907-626-C007	6" Thermoplastic Double Drop Edge Stripe, Continuous White	LF	200		
907-626-G006	Thermoplastic Double Drop Detail Stripe, White	LF	936		⚠
907-637-A001	Equipment Cabinet, Type B	EA	2		⚠ ⚠
907-637-B001	ITS Equipment Cabinet Modifications	EA	3		⚠ ⚠
647-A003	Pullbox, Type 4	EA	2		⚠
647-A004	Pullbox, Type 5	EA	1		⚠
647-A005	Pullbox, Type 2	EA	1		⚠
907-657-A001	Fiber Optic Cable, 72 SM	LF	12,300		⚠ ⚠
907-657-B001	Fiber Optic Drop Cable, 12 SM	LF	1,258		⚠ ⚠
666-B038	Electric Cable, Underground in Conduit, THHN, AWG #4, 3 Conductor	LF	200		⚠ ⚠
668-A014	Traffic Signal Conduit, Underground, Type 4, 1 1/2"	LF	50		⚠
668-A018	Traffic Signal Conduit, Underground, Type 4, 2"	LF	110		⚠
907-668-F001	Traffic Signal Conduit Bank, Underground, Drilled or Jacked,Rolled Pipe, 2"	LF	1,258		⚠ ⚠
907-668-F002	Traffic Signal Conduit Bank, Underground, Drilled or Jacked,Rolled Pipe, 2 @ 2"	LF	3,500		⚠
907-668-G002	Traffic Signal Conduit Bank, Aerial Supported, Type I, 2 @ 2"	LF	500		⚠
907-682-A1001	Branch Circuit Wire, AWG #1, 3 Conductor	LF	800		⚠
907-682-A1007	Branch Circuit Wire, AWG #4, 3 Conductor	LF	500		⚠
907-699-A002	Roadway Construction Stakes	LS	1		

⚠ ⚠ ⚠ ⚠ ⚠

ADDED PAY ITEMS, DELETED PAY ITEMS, & MODIFIED QUANTITIES	BL	By	MISSISSIPPI DEPARTMENT OF TRANSPORTATION SUMMARY OF QUANTITIES - PROJECT TOTALS Proj No: NHPP-9999-05(027) /NHPP-9999-05(027)/NHPP-9999-05(027) FMS: 107258-301000/107258-302000/107258-303000 Working Number SQ-6 Sheet Number 10
ADDED PAY ITEMS, DELETED PAY ITEMS, & MODIFIED QUANTITIES	BL		
ADDED PAY ITEMS, DELETED PAY ITEMS, & MODIFIED QUANTITIES	BL		
EDITED FOOTNOTE AND QUANTITIES	BL		
EDITED FOOTNOTE AND QUANTITIES	BL		
Date	Revision	FILENAME : SQS_107258 Design Team KIRBY Checked inclu Date 3/15/12	

STATE	PROJECT NO.
MISS.	NHPP-9999-05(027)



**□ CABINET
X TO BE REMOVED**

**NOTE:
ALL LOCATIONS ARE APPROXIMATE AND
SHOULD BE USED FOR REFERENCE ONLY.**

RELOCATED TYPE B CABINET 150 FEET WEST

REMOVE CABINET

Site 1

Gibraltar Dr

MDOT FIBER RELOCATION DESCRIPTION:
MDOT WILL CONSTRUCT A SLIDE REPAIR ON I-20 EASTBOUND THAT HAS EXISTING POWER LINE UNDERGROUND WITHIN THE PROJECT LIMITS. THIS POWER FEEDS AN ACTIVE DMS THAT IS NOT INSIDE THE LIMITS OF THE SLIDE REPAIR.

THIS POWER MUST BE RELOCATED WITH AN EQUIPMENT CABINET TO STA. 01+50 BEFORE THE PROJECT BEGINS. FOR FURTHER CLARIFICATION OF ANY OF THE ABOVE LISTED ITEMS, CONTACT THE ITS ENGINEER.

3/17/2017 2:09 PM LANDSLIDEpicsite126.dgn

ADDED SHEET		BY		MISSISSIPPI DEPARTMENT OF TRANSPORTATION	
REVISION				<p align="center">ITS RELOCATION SITE 1</p> <p>PROJ. NO.: NHPP-9999-05(027) COUNTY: HINDS, MADISON, & SCOTT</p>	
DATE	DESIGN TEAM	CHECKED	DATE	WORKING NUMBER	 ITS-1
3/15/17	KIRBY			16.1	

STATE	PROJECT NO.
MISS.	NHPP-9999-05(027)

CONSTRUCTION SEQUENCE


- 1) INSTALL EROSION AND SEDIMENTATION CONTROL DEVICES.
- 2) DEMOLISH EXISTING DITCH AND REMOVE CONCRETE FROM THE SITE.
- 3) CLEAR AND GRUB AREA UPSLOPE OF THE PROPOSED STABILIZATION PILES ON EXISTING SLOPE AREAS THAT WILL RECEIVE FILL. CLEARING AND GRUBBING SHALL INCLUDE THE REMOVAL OF GRASS AND OTHER VEGETATION ALONG WITH ASSOCIATED ROOT MATERIAL. ALL CLEARING AND GRUBBING DEBRIS SHALL BE REMOVED FROM THE SITE. GRADE CLEARED AND GRUBBED AREAS WITH BULLDOZER TO FILL IN SURFICIAL CRACKS.
- 4) EXCAVATE BENCH FOR LOWER STABILIZATION PILE INSTALLATION (SEE TS-7A), AND INSTALL LOWER STABILIZATION PILES AT THE LOCATIONS SHOWN ON PL-4. DRIVE PILES TO THE TIP ELEVATION SHOWN ON THE STABILIZATION PILE SCHEDULE (SEE THIS DRAWING). STEP 4 CAN BE COMPLETED CONCURRENTLY WITH STEP 3.
- 5) PLACE BORROW EXCAVATION CLASS B9-6 FILL MATERIAL TO CREATE BENCH FOR UPPER STABILIZATION PILE INSTALLATION (SEE TS-7B), AND INSTALL UPPER STABILIZATION PILES AT THE LOCATIONS SHOWN ON PL-4. DRIVE PILES TO THE TIP ELEVATION SHOWN ON THE STABILIZATION PILE SCHEDULE (SEE THIS DRAWING). PLACE AND COMPACT FILL MATERIAL IN ACCORDANCE WITH MDOT SPECIFICATIONS. SECTION 203.03.B-- EMBANKMENT CONSTRUCTION.
- 6) EXCAVATE FILL MATERIAL AND STOCKPILE OUTSIDE LANDSLIDE LIMITS. EXCAVATE DOWNSLOPE OF STABILIZATION PILES AS SHOWN ON TS-7C AND DET-2. THE COST FOR REMOVING AND REPLACING FILL MATERIAL, APPROXIMATELY 162 C.Y., SHALL BE ABSORBED IN OTHER ITEMS BID.
- 7) PLACE BORROW EXCAVATION CLASS B9-6 FILL MATERIAL INCLUDING STOCKPILED MATERIAL DOWNSLOPE OF PILES TO FINAL GRADE. PLACE AND COMPACT FILL MATERIAL IN ACCORDANCE WITH MDOT SPECIFICATIONS. SECTION 203.03.B-- EMBANKMENT CONSTRUCTION.
- 8) PLACE AND COMPACT BORROW CLASS B9-6 FILL MATERIAL UPSLOPE OF STABILIZATION PILES TO FINAL GRADE IN ACCORDANCE WITH MDOT SPECIFICATIONS. SECTION 203.03B-- EMBANKMENT CONSTRUCTION.
- 9) CONSTRUCT PROPOSED DITCH IN ACCORDANCE WITH DETAILS ON DET-2.
- 10) REVEGETATE DISTURBED AREAS. PERMANENT VEGETATION OF THE FINAL GRADE SURFACES SHALL BE PERFORMED SUCH THAT NO FINAL GRADE EARTHEN SURFACE SHALL BE UNPROTECTED FOR MORE THAN 7 DAYS.



PILE SCHEDULE			
PILE NO.	PILE HEAD ⁽¹⁾ ELEVATION (ft)	PILE TIP ⁽¹⁾ ELEVATION (ft)	PILE TYPE ⁽²⁾
SP-U1	377.3	342.3	HP 14x73
SP-U2	377.3	342.3	HP 14x73
SP-U3	376.5	341.5	HP 14x73
SP-U4	377.3	342.3	HP 14x73
SP-U5	377.3	342.3	HP 14x73
SP-U6	377.3	342.3	HP 14x73
SP-U7	376.8	341.8	HP 14x73
SP-U8	376.3	341.3	HP 14x73
SP-U9	376	341	HP 14x73
SP-U10	375.8	340.8	HP 14x73
SP-L1	370.5	335.5	HP 14x73
SP-L2	370.8	335.8	HP 14x73
SP-L3	371	336	HP 14x73
SP-L4	371.2	336.2	HP 14x73
SP-L5	371.5	336.5	HP 14x73
SP-L6	371.8	336.8	HP 14x73
SP-L7	372.1	337.1	HP 14x73
SP-L8	372.3	337.3	HP 14x73
SP-L9	372.5	337.5	HP 14x73
SP-L10	372.5	337.5	HP 14x73
SP-L11	372.5	337.5	HP 14x73
SP-L12	372	337	HP 14x73
SP-L13	372	337	HP 14x73
SP-L14	372.3	337.3	HP 14x73
SP-L15	372.3	337.3	HP 14x73
SP-L16	372.3	337.3	HP 14x73
SP-L17	372.3	337.3	HP 14x73
SP-L18	372.3	337.3	HP 14x73
SP-L19	372.3	337.3	HP 14x73
SP-L20	372.3	337.3	HP 14x73
SP-L21	372.3	337.3	HP 14x73
SP-L22	372.3	337.3	HP 14x73
SP-L23	372.3	337.3	HP 14x73
SP-L24	372.3	337.3	HP 14x73
SP-L25	372.3	337.3	HP 14x73
SP-L26	372.3	337.3	HP 14x73
SP-L27	372.3	337.3	HP 14x73

(1) Pile Elevation may vary ± 3".
 (2) H-Piles shall be conforming to ASTM A6. H-Piles shall be Grade 50 (ASTM A572).

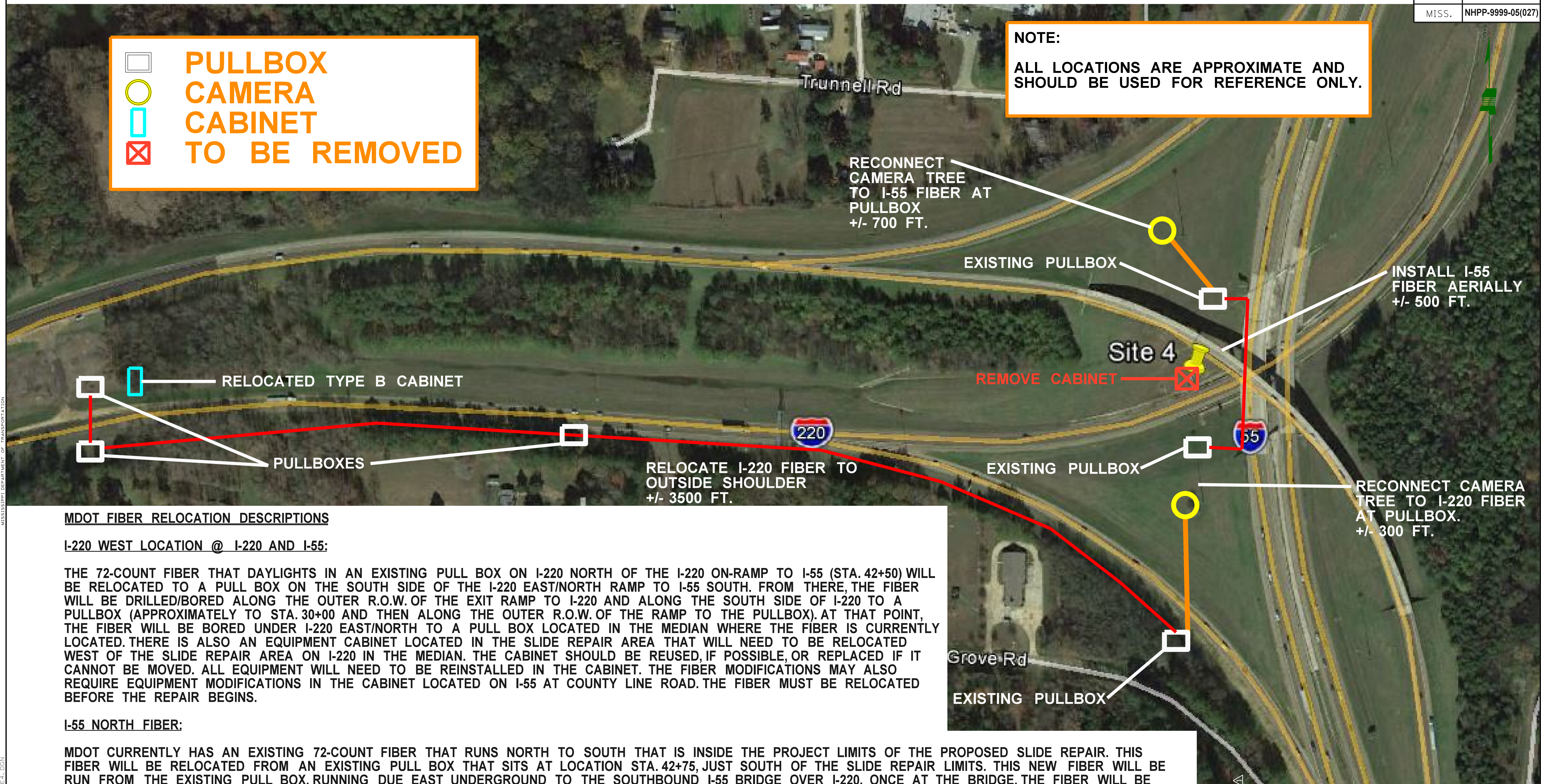
3/15/2017 5:00 PM CONSTSEQHINDS126.DGN

MISSISSIPPI DEPARTMENT OF TRANSPORTATION CONSTRUCTION SEQUENCE & STABILIZATION PILE SCHEDULE SITE 2 LANDSLIDE REMEDIATION I-220 RAMP B INTERCHANGE AT I-20 WEST BOUND		
PROJ. NO.: NHPP-9999-05(027) COUNTY: HINDS, MADISON, & SCOTT		
FILENAME: CONSTSEQHINDS126.DGN DESIGN TEAM: KIRBY	WORKING NUMBER CS-2	SHEET NUMBER 31

STATE	PROJECT NO.
MISS.	NHPP-9999-05(027)

PULLBOX
CAMERA
CABINET
TO BE REMOVED

NOTE:
 ALL LOCATIONS ARE APPROXIMATE AND SHOULD BE USED FOR REFERENCE ONLY.



MDOT FIBER RELOCATION DESCRIPTIONS

I-220 WEST LOCATION @ I-220 AND I-55:

THE 72-COUNT FIBER THAT DAYLIGHTS IN AN EXISTING PULL BOX ON I-220 NORTH OF THE I-220 ON-RAMP TO I-55 (STA. 42+50) WILL BE RELOCATED TO A PULL BOX ON THE SOUTH SIDE OF THE I-220 EAST/NORTH RAMP TO I-55 SOUTH. FROM THERE, THE FIBER WILL BE DRILLED/BORED ALONG THE OUTER R.O.W. OF THE EXIT RAMP TO I-220 AND ALONG THE SOUTH SIDE OF I-220 TO A PULLBOX (APPROXIMATELY TO STA. 30+00 AND THEN ALONG THE OUTER R.O.W. OF THE RAMP TO THE PULLBOX). AT THAT POINT, THE FIBER WILL BE BORED UNDER I-220 EAST/NORTH TO A PULL BOX LOCATED IN THE MEDIAN WHERE THE FIBER IS CURRENTLY LOCATED. THERE IS ALSO AN EQUIPMENT CABINET LOCATED IN THE SLIDE REPAIR AREA THAT WILL NEED TO BE RELOCATED WEST OF THE SLIDE REPAIR AREA ON I-220 IN THE MEDIAN. THE CABINET SHOULD BE REUSED, IF POSSIBLE, OR REPLACED IF IT CANNOT BE MOVED. ALL EQUIPMENT WILL NEED TO BE REINSTALLED IN THE CABINET. THE FIBER MODIFICATIONS MAY ALSO REQUIRE EQUIPMENT MODIFICATIONS IN THE CABINET LOCATED ON I-55 AT COUNTY LINE ROAD. THE FIBER MUST BE RELOCATED BEFORE THE REPAIR BEGINS.

I-55 NORTH FIBER:

MDOT CURRENTLY HAS AN EXISTING 72-COUNT FIBER THAT RUNS NORTH TO SOUTH THAT IS INSIDE THE PROJECT LIMITS OF THE PROPOSED SLIDE REPAIR. THIS FIBER WILL BE RELOCATED FROM AN EXISTING PULL BOX THAT SITS AT LOCATION STA. 42+75, JUST SOUTH OF THE SLIDE REPAIR LIMITS. THIS NEW FIBER WILL BE RUN FROM THE EXISTING PULL BOX, RUNNING DUE EAST UNDERGROUND TO THE SOUTHBOUND I-55 BRIDGE OVER I-220. ONCE AT THE BRIDGE, THE FIBER WILL BE PLACED IN CONDUIT ATTACHED TO THE SOUTHBOUND BRIDGE TO THE NORTHERN END OF THE BRIDGE. THE FIBER WILL THEN RUN UNDERGROUND TO ANOTHER EXISTING PULL BOX THAT IS LOCATED NORTHWEST OF THE BRIDGE.

THERE ARE TWO CAMERAS ATTACHED TO LIGHT POLES THAT WILL NEED TO BE RECONNECTED.

1. THE SOUTHERN CAMERA IS LOCATED ON THE HIGH MAST LIGHT POLE WEST OF I-55 AND SOUTH OF THE I-220 ON-RAMP TO I-55 NORTH. IT CAN BE CONNECTED TO THE RELOCATED FIBER FOR I-220 AT THE PULL BOX SOUTH OF THE I-220 RAMP TO I-55 SOUTH.
2. THE NORTHERN CAMERA IS LOCATED ON THE HIGH MAST POLE WEST OF I-55 AND NORTH OF THE I-220 ON-RAMP TO I-55 NORTH. IT CAN BE RECONNECTED VIA THE CLOSEST PULL BOX ON THE NORTH SIDE AWAY FROM THE SLIDE.

EFFORT SHALL BE MADE TO MINIMIZE THE DOWNTIME FOR THE I-55 FIBER SINCE THIS CABLE SERVICES ALL EQUIPMENT NORTH OF THE WORK SITE. THE FIBER IN THIS AREA MUST BE RELOCATED BEFORE THE REPAIR BEGINS.

MISSISSIPPI DEPARTMENT OF TRANSPORTATION	
ITS RELOCATION SITE 4	
PROJ. NO.: NHPP-9999-05(027) COUNTY: HINDS, MADISON, & SCOTT FILENAME: LANDSLIDEPICSITE4.DGN DESIGN TEAM: KIRBY	
WORKING NUMBER ITS-4	SHEET NUMBER 49.1

3/17/2017 2:10 PM LANDSLIDEPICSITE4.DGN

STATE	PROJECT NO.
MISS.	NHPP-9999-05(027)

CONSTRUCTION SEQUENCE

- 1) INSTALL EROSION AND SEDIMENTATION CONTROL DEVICES.
- 2) DEMOLISH EXISTING PAVED DITCH.REMOVE GUARDRAIL FROM STA.43+00 TO STA.45+00+/- .REMOVE EXISTING PIPE FROM STA.38+10+/- TO STA.44+00.REMOVE CONCRETE FROM THE SITE.
- 3) CLEAR AND GRUB AREA UPSLOPE OF THE PROPOSED STABILIZATION PILES ON EXISTING SLOPE AREAS THAT WILL RECEIVE FILL (SEE TS-13).CLEARING AND GRUBBING SHALL INCLUDE THE REMOVAL OF GRASS AND OTHER VEGETATION ALONG WITH ASSOCIATED ROOT MATERIAL. ALL CLEARING AND GRUBBING DEBRIS SHALL BE REMOVED FROM THE SITE.GRADE AREAS WITH BULLDOZER TO FILL IN SURFICIAL CRACKS.
- 4) EXCAVATE BENCH FOR LOWER STABILIZATION PILE INSTALLATION (SEE TS-13A) AND INSTALL LOWER STABILIZATION PILES AT THE LOCATIONS SHOWN ON PL-8.DRIVE PILES TO THE TIP ELEVATION SHOWN ON THE STABILIZATION PILE SCHEDULE (SEE THIS DRAWING).STEP 4 CAN BE PERFORMED CONCURRENTLY WITH STEP 3.
- 5) PLACE BORROW EXCAVATION CLASS B9-6 FILL MATERIAL TO CREATE BENCH FOR UPPER STABILIZATION PILE INSTALLATION (SEE TS-13B) AND INSTALL UPPER STABILIZATION PILES AT THE LOCATIONS SHOWN ON PL-8.DRIVE PILES TO THE TIP ELEVATION SHOWN ON THE STABILIZATION PILE SCHEDULE (SEE THIS DRAWING). PLACE AND COMPACTED FILL MATERIAL IN ACCORDANCE WITH MDOT SPECIFICATIONS.SECTION 203.03.B--EMBANKMENT CONSTRUCTION.
- 6) EXCAVATE FILL MATERIAL AND STOCKPILE OUTSIDE LANDSLIDE LIMITS.EXCAVATE DOWNSLOPE OF STABILIZATION PILES AS SHOWN TS-13C. THE COST FOR REMOVING AND REPLACING FILL MATERIAL, APPROXIMATELY 296 C.Y., SHALL BE ABSORBED IN OTHER ITEMS BID.
- 7) INSTALL PROPOSED 30" DIA.CULVERT.
- 8) PLACE BORROW EXCAVATION CLASS B9-6 FILL MATERIAL INCLUDING STOCKPILED FILL MATERIAL DOWNSLOPE OF PILES TO FINAL GRADE.PLACE AND COMPACT FILL MATERIAL IN ACCORDANCE WITH MDOT SPECIFICATIONS.SECTION 203.03.B--EMBANKMENT CONSTRUCTION.
- 9) PLACE AND COMPACT BORROW CLASS B9-6 FILL MATERIAL UPSLOPE OF STABILIZATION PILES TO FINAL GRADE IN ACCORDANCE WITH MDOT SPECIFICATIONS.SECTION 203.03.B-- EMBANKMENT CONSTRUCTION.
- 10)REPAIR PAVED DITCH AND DRAIN PIPE AT TOE IN ACCORDANCE WITH DETAILS ON CROSS SECTIONS.REPLACE GUARDRAIL.
- 11) REVEGETATE DISTURBED AREAS.PERMANENT VEGETATION OF THE FINAL GRADE SURFACES SHALL BE PERFORMED SUCH THAT NO FINAL GRADE EARTHEN SURFACE SHALL BE UNPROTECTED FOR MORE THAN 7 DAYS.

STABILIZATION PILE SCHEDULE			
PILE NO.	PILE HEAD ⁽¹⁾ ELEVATION (ft)	PILE TIP ⁽¹⁾ ELEVATION (ft)	PILE TYPE ⁽²⁾
SP-U1	346	311	HP14X73
SP-U2	346	311	HP14X73
SP-U3	346	311	HP14X73
SP-U4	346	311	HP14X73
SP-U5	346	311	HP14X73
SP-U6	346	311	HP14X73
SP-U7	346	311	HP14X73
SP-U8	346	311	HP14X73
SP-U9	346	311	HP14X73
SP-U10	346	311	HP14X73
SP-U11	346	311	HP14X73
SP-U12	346	311	HP14X73
SP-U13	346	311	HP14X73
SP-U14	346	311	HP14X73
SP-U15	346	311	HP14X73
SP-U16	346	311	HP14X73
SP-U17	346	311	HP14X73
SP-U18	346	311	HP14X73
SP-U19	346	311	HP14X73
SP-U20	346	311	HP14X73
SP-U21	346	311	HP14X73
SP-U22	346	311	HP14X73
SP-U23	346	311	HP14X73
SP-U24	346	311	HP14X73
SP-U25	346	311	HP14X73
SP-U26	346	311	HP14X73
SP-U27	346	311	HP14X73
SP-U28	346	311	HP14X73
SP-U29	346	311	HP14X73
SP-U30	346	311	HP14X73
SP-U31	346	311	HP14X73
SP-L1	342	312	HP14X73
SP-L2	342	312	HP14X73
SP-L3	342	312	HP14X73
SP-L4	342	312	HP14X73
SP-L5	342	312	HP14X73
SP-L6	342	312	HP14X73
SP-L7	342	312	HP14X73
SP-L8	342	312	HP14X73
SP-L9	342	312	HP14X73
SP-L10	342	312	HP14X73
SP-L11	342	312	HP14X73
SP-L12	342	312	HP14X73
SP-L13	342	312	HP14X73
SP-L14	342	312	HP14X73
SP-L15	342	312	HP14X73
SP-L16	342	312	HP14X73
SP-L17	342	312	HP14X73
SP-L18	342	312	HP14X73
SP-L19	342	312	HP14X73
SP-L20	342	312	HP14X73
SP-L21	342	312	HP14X73

(1) Pile elevation may vary ±3"
 (2) H-Piles shall conform to ASTM A6. Steel for H-Piles Grade 50 (ASTM A572).

3/15/2017 5:01 PM CONSTSEQMADSCOTT.DGN

MISSISSIPPI DEPARTMENT OF TRANSPORTATION			
CONSTRUCTION SEQUENCE & STABILIZATION PILE SCHEDULE - SITE 4 LANDSLIDE REMEDIATION - I-220 RAMP TO NB I-55			
PROJ. NO.: NHPP-9999-05(027)		WORKING NUMBER CS-4	
COUNTY: HINDS, MADISON, & SCOTT		SHEET NUMBER 50	
FILENAME: CONSTSEQMADSCOTT.DGN			
DESIGN TEAM	KIRBY	CHECKED	DATE



DATE	BY	REVISION
2/22/17	BFL	
2/22/17	BFL	
2/22/17	BFL	

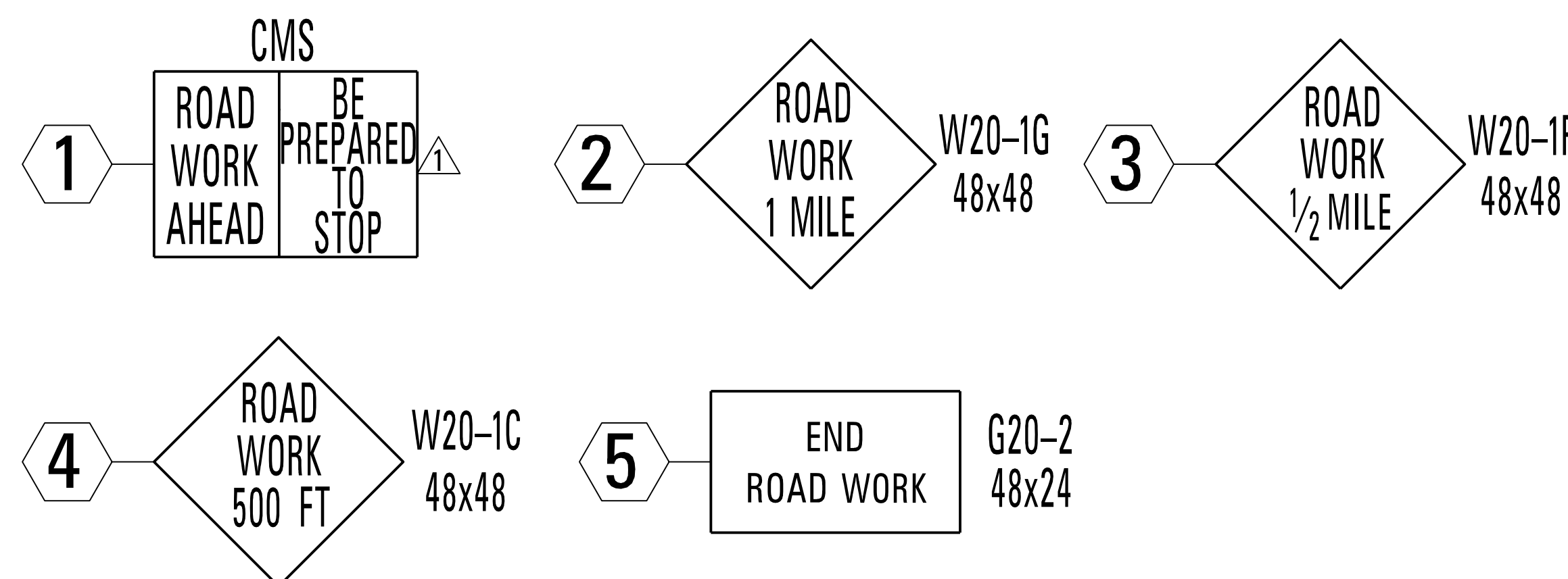
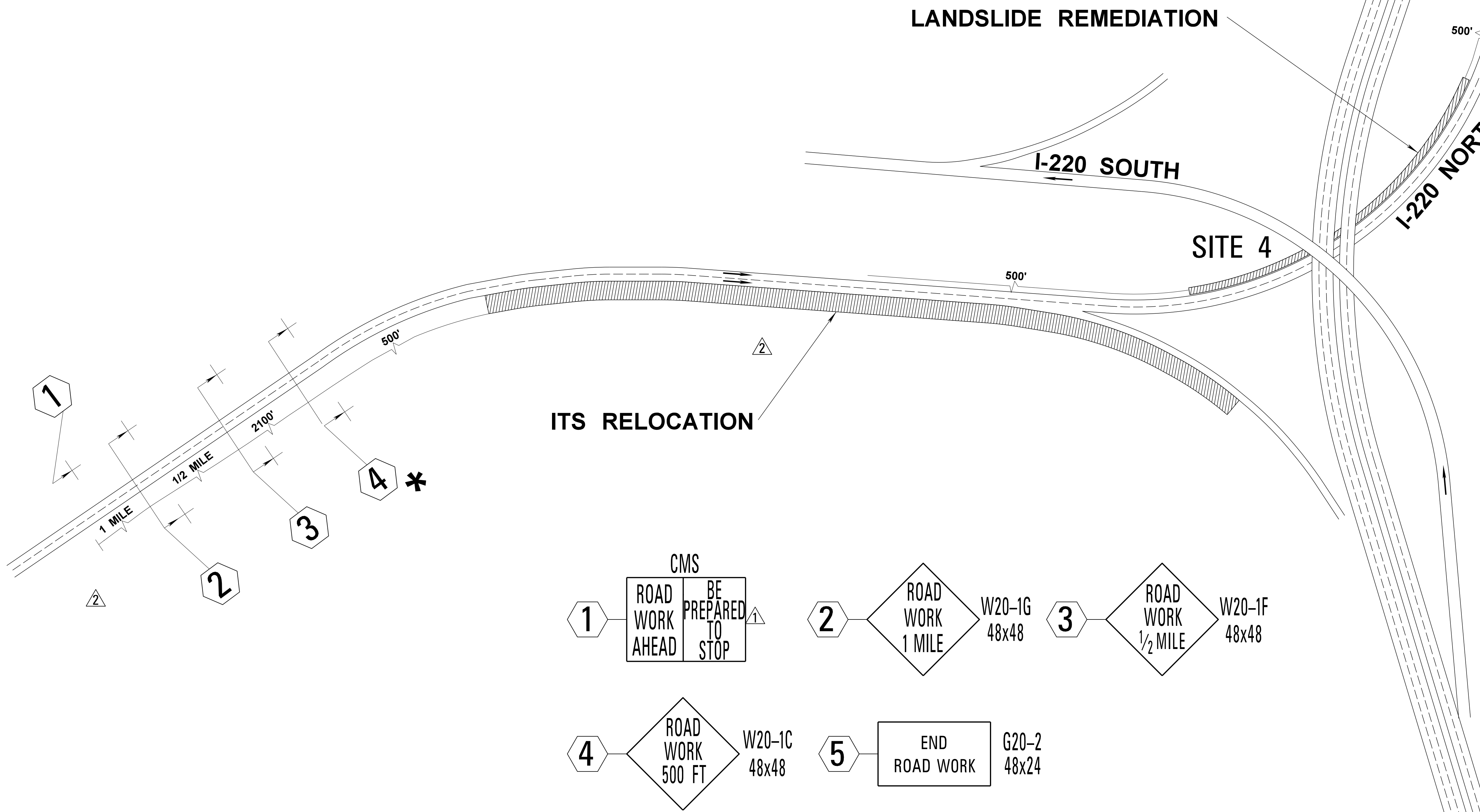
STATE	PROJECT NO.
MISS.	NHPP-9999-05(027)


I-55 SOUTH I-55 NORTH

SIGNS REQUIRED		
SIGN NO.	QUANTITY REQUIRED	REMARKS
G20 - 2	2	END ROAD WORK
W20-1G	2	ROAD WORK 1 MILE
W20-1F	2	ROAD WORK 1/2 MILE
W20-1C	2	ROAD WORK 500 FT
CMS	1	ROAD WORK AHEAD, PREPARE TO STOP
TYPE III SINGLE-FACED BARRICADE	16 FT	

NOTES:

1. SIGNS ON THIS SHEET MAY BE ADJUSTED TO FIT FIELD CONDITIONS AS DIRECTED BY THE ENGINEER.
 2. FOR (NORTHERN INSIDE) LANE CLOSURE DETAILS ON SITE 4, SEE WORKING NUMBERS TCP-2 AND SDTCP-3.
 3. CMS LOCATIONS ON THIS SHEET MAY BE ADJUSTED TO FIT FIELD CONDITIONS AS DIRECTED BY THE ENGINEER.
- * SIGNS TO BE MOUNTED ON TYPE III SINGLE-FACED BARRICADES.



MISSISSIPPI DEPARTMENT OF TRANSPORTATION			
DETAIL OF CONSTRUCTION SIGNING - SITE 4			
			
PROJ. NO.: NHPP-9999-05(027) COUNTY: HINDS, MADISON, & SCOTT			
FILENAME: DCS-MAD-4.DGN DESIGN TEAM: KIRBY CHECKED: DATE:			
3/17/2017 1:21:38 PM DCS-MAD-4.DGN	3/15/17 MOVED SIGNS, ADDED ITS 2/22/17 DATE	3/15/17 BFL 2/22/17 BFL DATE	3/15/17 BFL 2/22/17 BFL DATE
WORKING NUMBER			DCS-3
SHEET NUMBER			90

3/17/2017 1:21:38 PM DCS-MAD-4.DGN