

|             |                  |           |
|-------------|------------------|-----------|
| STATE       | PROJECT NUMBER   | SHEET NO. |
| MISSISSIPPI | HSIP-055-04(099) | 1         |

**GENERAL INDEX**

| INCLUDED THIS PROJECT  | BEGIN WITH SHEET |
|--|------------------|
| <input checked="" type="checkbox"/> ROADWAY .....            | 1                |
| <input checked="" type="checkbox"/> PERMANENT SIGNS .....    | 1001             |
| <input checked="" type="checkbox"/> TRAFFIC SIGNALS .....    | 2001             |
| <input type="checkbox"/> ITS COMPONENTS .....                | 3001             |
| <input checked="" type="checkbox"/> LIGHTING .....           | 4001             |
| <input type="checkbox"/> (RESERVED) .....                    | 5001             |
| <input checked="" type="checkbox"/> ROADWAY STANDARD DWGS .. | 6001             |
| <input type="checkbox"/> BRIDGE STANDARD DWGS .....          | 7001             |
| <input type="checkbox"/> BRIDGE .....                        | 8001             |
| <input checked="" type="checkbox"/> CROSS SECTIONS .....     | 9001             |

STATE OF MISSISSIPPI

MISSISSIPPI DEPARTMENT OF TRANSPORTATION

**PLAN AND PROFILE OF PROPOSED STATE HIGHWAY FEDERAL AID PROJECT NO. HSIP-0055-04(099)**

**SAFETY IMPROVEMENTS ALONG GOODMAN ROAD FROM INTERSTATE BOULEVARD AND GOODMAN ROAD INTERSECTION TO SOUTHCREST PARKWAY AND GOODMAN ROAD**

**INTERSECTION  
DESOTO COUNTY**

FMS. CONST. NO. 107037/301000

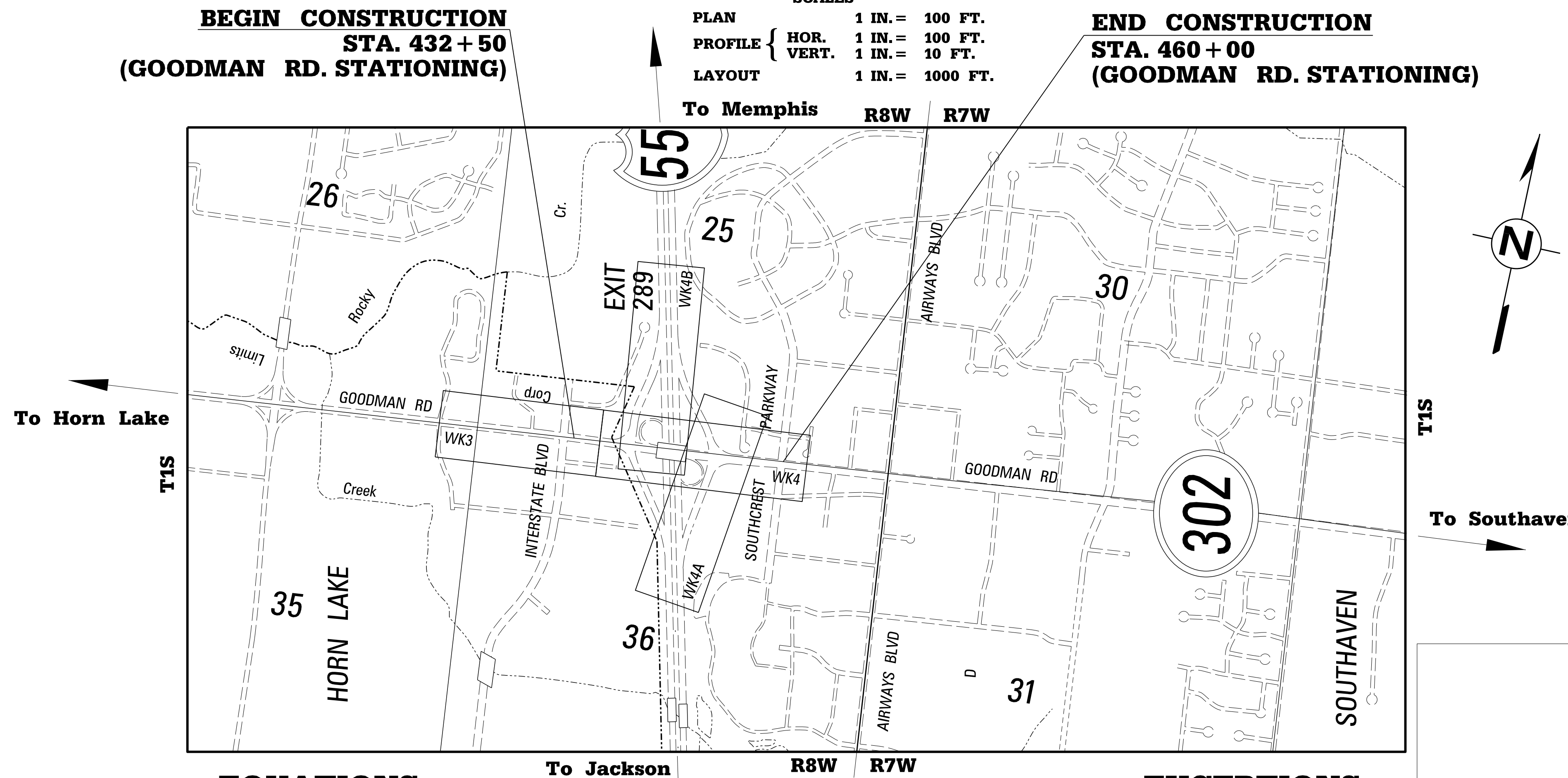
**BRIDGE STRUCTURES REQ'D.  
NONE**

**BEGIN CONSTRUCTION  
STA. 432 + 50  
(GOODMAN RD. STATIONING)**

**SCALES**  
PLAN 1 IN. = 100 FT.  
PROFILE { HOR. 1 IN. = 100 FT.  
VERT. 1 IN. = 10 FT.  
LAYOUT 1 IN. = 1000 FT.

**END CONSTRUCTION  
STA. 460 + 00  
(GOODMAN RD. STATIONING)**

**BOX BRIDGES REQ'D.  
NONE**



**EQUATIONS  
NONE**

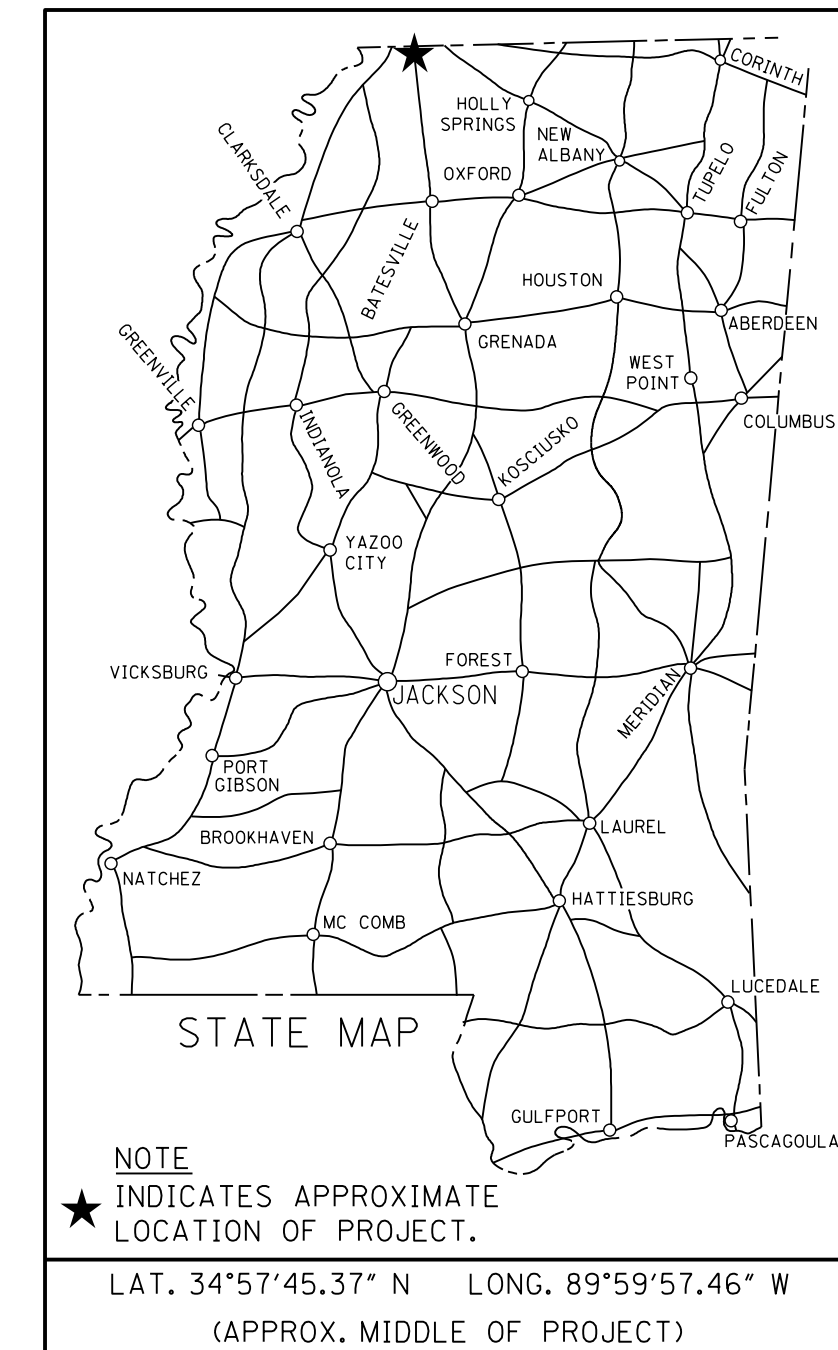
**EXCEPTIONS  
NONE**

**LENGTH DATA**

|                           |         |     |      |     |
|---------------------------|---------|-----|------|-----|
| LENGTH OF ROADWAY         | 2412.68 | FT. | 0.46 | MI. |
| LENGTH OF BRIDGES         | 337.32  | FT. | 0.06 | MI. |
| LENGTH OF PROJECT (NET)   |         |     | 0.52 | MI. |
| LENGTH OF EXCEPTIONS      | 0       | FT. | 0.00 | MI. |
| LENGTH OF PROJECT (GROSS) |         |     | 0.52 | MI. |

**CONVENTIONAL SYMBOLS**

- COUNTY LINE .....
- TOWN CORPORATION LINE .....
- SECTION LINE .....
- EXISTING ROAD OR TRAVELED WAY - - - - -
- PROPOSED ROAD OR TRAVELED WAY \_\_\_\_\_
- RAILROAD .....
- SURVEY LINE .....
- BRIDGES .....



NOTE  
★ INDICATES APPROXIMATE LOCATION OF PROJECT.  
LAT. 34°57'45.37" N LONG. 89°59'57.46" W  
(APPROX. MIDDLE OF PROJECT)

**DESIGN CONTROL**

45 MPH = V (SPEED DESIGN)

ADT (2015) = 40,000 : ADT ( ) = \_\_\_\_\_

DHV = \_\_\_\_\_ : D = \_\_\_\_\_ % T = \_\_\_\_\_ %

**PERMITS ACQUIRED BY MDOT**

WETLANDS AND WATERS PERMITS (NECESSARY FOR ULTIMATE IMPROVEMENTS ONLY):

|                     | WATERS                   | WETLANDS                 |
|---------------------|--------------------------|--------------------------|
| NATIONWIDE #14      | <input type="checkbox"/> | <input type="checkbox"/> |
| NATIONWIDE (OTHER)* | <input type="checkbox"/> | <input type="checkbox"/> |
| GENERAL*            | <input type="checkbox"/> | <input type="checkbox"/> |
| INDIVIDUAL (404)*   | <input type="checkbox"/> | <input type="checkbox"/> |

\* ACQUISITION OF PERMITS FOR TEMPORARY IMPACTS DURING CONSTRUCTION ARE THE RESPONSIBILITY OF THE CONTRACTOR

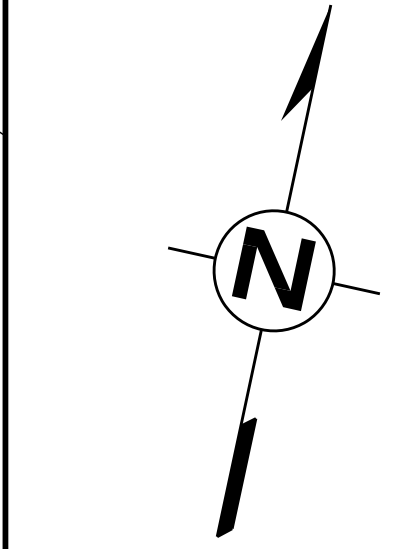
**STORMWATER PERMIT**

Y REQUIRED, SC01 SUBMITTED BY MDOT (DISTURBED AREA = 5 ACRES)

S REQUIRED, SC01 TO BE SUBMITTED BY CONTRACTOR (1 TO 4.99 ACRES)

N NO STORMWATER PERMIT REQUIRED (<1 ACRE)

APPROVED BY: \_\_\_\_\_



To Memphis R8W R7W

To Horn Lake T1S

To Southaven T1S

To Jackson R8W R7W

DATE: 04/13/2017  
(SIGNALS ONLY)

DATE: 04/13/2017  
(LIGHTING ONLY)

|  |           |
|--|-----------|
| P S & E DATE:                              | 4 /13 /17 |
| APPROVED:                                  |           |
| DEPUTY EXECUTIVE DIRECTOR / CHIEF ENGINEER |           |
| EXECUTIVE DIRECTOR                         |           |



4/13/2017 1:18 PM TLE.DGN

1st O.REV.

|       |                   |
|-------|-------------------|
| STATE | PROJECT NO.       |
| MISS. | HSIP-0055-04(099) |

DESCRIPTION OF SHEET

WKG. NO. SH. NO.

DESCRIPTION OF SHEET

WKG. NO. SH. NO.

ROADWAY

TITLE SHEET (1)

TITLE 1

DETAILED INDEX & GENERAL NOTES (3)

- DETAIL INDEX (ROADWAY)
- DETAIL INDEX (ROADWAY)
- GENERAL NOTES

DI-1 2  
DI-2 3  
GN-1 4

TYPICAL SECTION SHEETS (2)

- TYPICAL SECTIONS - SR 302 / GOODMAN RD WEST OF I-55
- TYPICAL SECTIONS - SR 302 / GOODMAN RD EAST OF I-55 & I-55 OFF RAMPS

TS-1 5  
TS-2 6

QUANTITY SHEETS (17)

- SUMMARY OF QUANTITIES
- SUMMARY OF QUANTITIES
- SUMMARY OF QUANTITIES
- SUMMARY OF QUANTITIES
- SUMMARY OF QUANTITIES
- ESTIMATED QUANTITIES - REMOVAL ITEMS
- ESTIMATED QUANTITIES - EARTHWORKS
- ESTIMATED QUANTITIES - EROSION CONTROL
- ESTIMATED QUANTITIES - DRAINAGE STRUCTURES
- ESTIMATED QUANTITIES - JUNCTION BOXES
- ESTIMATED QUANTITIES - COMBINATION CURB & GUTTER, GUARDRAIL, AND DELINEATORS
- ESTIMATED QUANTITIES - PAVEMENT MARKINGS
- ESTIMATED QUANTITIES - STANDARD SIGNS & ASSEMBLIES
- ESTIMATED QUANTITIES - TRAFFIC CONTROL ITEMS
- ESTIMATED QUANTITIES - TRAFFIC CONTROL SIGNS
- ESTIMATED QUANTITIES - SIGNALS
- ESTIMATED QUANTITIES - LIGHTING

SQ-1 7  
SQ-2 8  
SQ-3 9  
SQ-4 10  
SQ-5 11  
EQ-1 12  
EQ-2 13  
EQ-3 14  
EQ-4 15  
EQ-5 16  
EQ-6 17  
EQ-7 18  
EQ-8 19  
EQ-9 20  
EQ-10 21  
EQ-11 22  
ELQ-1 23

PLAN AND PROFILE SHEETS (6)

- SR-302 / GOODMAN RD. LEFT - B.O.P. TO STA. 435+00
- SR-302 / GOODMAN RD. RIGHT - B.O.P. TO STA. 435+00
- SR-302 / GOODMAN RD. LEFT - 435+00 TO E.O.P.
- SR-302 / GOODMAN RD. RIGHT - 435+00 TO E.O.P.
- SR-302 / GOODMAN RD. @ S.E. RAMP - STA. 607+45 TO STA. 615+98
- SR-302 / GOODMAN RD. @ N.W. RAMP - STA. 616+26 TO STA. 623+50

3LT 24  
3RT 25  
4LT 26  
4RT 27  
4A 28  
4B 29

EROSION CONTROL PLAN SHEETS (6)

- EROSION CONTROL PLAN - SR-302 LEFT - B.O.P. TO STA. 435+00
- EROSION CONTROL PLAN - SR-302 RIGHT - B.O.P. TO STA. 435+00
- EROSION CONTROL PLAN - SR-302 LEFT - 435+00 TO E.O.P.
- EROSION CONTROL PLAN - SR-302 RIGHT - 435+00 TO E.O.P.
- EROSION CONTROL PLAN - SR-302 @ S.E. RAMP - STA. 607+45 TO STA. 615+98
- EROSION CONTROL PLAN - SR-302 @ N.W. RAMP - STA. 616+26 TO STA. 623+50

ECP-3LT 30  
ECP-3RT 31  
ECP-4LT 32  
ECP-4RT 33  
ECP-4A 34  
ECP-4B 35

CONSTRUCTION SIGNING SHEETS (1)

- CONSTRUCTION SIGNING

CS-1 36

TRAFFIC CONTROL SHEETS (34)

- TRAFFIC CONTROL PLAN - CONSTRUCTION PHASING NOTES
- TRAFFIC CONTROL PLAN - GENERAL NOTES
- TRAFFIC CONTROL PLAN - PHASE 1A CONSTRUCTION TYPICAL SECTIONS
- TRAFFIC CONTROL PLAN - PHASES 1B & 1C CONSTRUCTION TYPICAL SECTIONS
- TRAFFIC CONTROL PLAN - PHASES 1C, 2, & 3A CONSTRUCTION TYPICAL SECTIONS
- TRAFFIC CONTROL PLAN - PHASES 3B & 4 CONSTRUCTION TYPICAL SECTIONS
- TRAFFIC CONTROL PLAN - PHASE 1A - SR 302 STA. 438+00 TO STA. 454+00
- TRAFFIC CONTROL PLAN - PHASE 1A - SE RAMP SOUTH OF SR 302
- TRAFFIC CONTROL PLAN - PHASE 1A - NW RAMP NORTH OF SR 302
- TRAFFIC CONTROL PLAN - PHASE 1B - SR 302 STA. 438+00 TO STA. 454+00
- TRAFFIC CONTROL PLAN - PHASE 1B - SR 302 STA. 454+00 TO STA. 469+00
- TRAFFIC CONTROL PLAN - PHASE 1B - SE RAMP SOUTH OF SR 302
- TRAFFIC CONTROL PLAN - PHASE 1B - NW RAMP NORTH OF SR 302
- TRAFFIC CONTROL PLAN - PHASE 1C - SR 302 STA. 438+00 TO STA. 454+00
- TRAFFIC CONTROL PLAN - PHASE 1C - SR 302 STA. 454+00 TO STA. 469+00
- TRAFFIC CONTROL PLAN - PHASE 1C - SE RAMP SOUTH OF SR 302
- TRAFFIC CONTROL PLAN - PHASE 2 - SR 302 STA. 423+00 TO STA. 438+00
- TRAFFIC CONTROL PLAN - PHASE 2 - SR 302 STA. 438+00 TO STA. 454+00
- TRAFFIC CONTROL PLAN - PHASE 2 - SR 302 STA. 454+00 TO STA. 469+00
- TRAFFIC CONTROL PLAN - PHASE 3A - SR 302 STA. 423+00 TO STA. 438+00
- TRAFFIC CONTROL PLAN - PHASE 3A - SR 302 STA. 438+00 TO STA. 454+00
- TRAFFIC CONTROL PLAN - PHASE 3A - SR 302 STA. 454+00 TO STA. 469+00
- TRAFFIC CONTROL PLAN - PHASE 3B - SR 302 STA. 423+00 TO STA. 438+00
- TRAFFIC CONTROL PLAN - PHASE 3B - SR 302 STA. 438+00 TO STA. 454+00
- TRAFFIC CONTROL PLAN - PHASE 3B - SR 302 STA. 454+00 TO STA. 469+00
- TRAFFIC CONTROL PLAN - PHASE 4 - SR 302 STA. 423+00 TO STA. 438+00
- TRAFFIC CONTROL PLAN - PHASE 4 - SR 302 STA. 438+00 TO STA. 454+00
- TRAFFIC CONTROL PLAN - PHASE 4 - SR 302 STA. 454+00 TO STA. 469+00
- TEMPORARY SIGNAL LAYOUT DETAILS SR 302 / I-55 SB - PHASES 1A, 1B, 1C, & 2
- TEMPORARY SIGNAL LAYOUT DETAILS SR 302 / I-55 SB - PHASES 2, 3A, & 3B
- TEMPORARY SIGNAL LAYOUT DETAILS SR 302 / I-55 NB - PHASES 1A, 1B, 1C, & 2
- TEMPORARY SIGNAL LAYOUT DETAILS SR 302 / I-55 NB - PHASES 2, 3A, & 3B
- TEMPORARY SIGNAL LAYOUT DETAILS SR 302 / SOUTHCREST - PHASES 1A, 1B, 1C, & 2
- TEMPORARY SIGNAL LAYOUT DETAILS SR 302 / SOUTHCREST - PHASES 2, 3A, & 3B

TC-GN1 37  
TC-GN2 38  
TC-TS1 39  
TC-TS2 40  
TC-TS3 41  
TC-TS4 42  
TC-1 43  
TC-2 44  
TC-3 45  
TC-4 46  
TC-5 47  
TC-6 48  
TC-7 49  
TC-8 50  
TC-9 51  
TC-10 52  
TC-11 53  
TC-12 54  
TC-13 55  
TC-14 56  
TC-15 57  
TC-16 58  
TC-17 59  
TC-18 60  
TC-19 61  
TC-20 62  
TC-21 63  
TC-22 64  
TC-SIG1A 65  
TC-SIG1B 66  
TC-SIG2A 67  
TC-SIG2B 68  
TC-SIG3A 69  
TC-SIG3B 70

FORM GRADES (2)

- SR302 AT I-55 NORTHWEST RAMP INTERSECTION
- SR302 AT I-55 SOUTHEAST RAMP INTERSECTION

FG-1 71  
FG-2 72

DETAIL OF INTERSECTION SHEETS (5)

- DETAIL OF INTERSECTION - S.R. 302 / GOODMAN RD. AT INTERSTATE BLVD.
- DETAIL OF INTERSECTION - S.R. 302 / GOODMAN RD. AT SOUTHBOUND RAMP
- DETAIL OF INTERSECTION - S.R. 302 / GOODMAN RD. AT I-55 OVERPASS
- DETAIL OF INTERSECTION - S.R. 302 / GOODMAN RD. AT NORTHBOUND RAMP
- DETAIL OF INTERSECTION - S.R. 302 / GOODMAN RD. AT SOUTHCREST PARKWAY

ID-1 73  
ID-2 74  
ID-3 75  
ID-4 76  
ID-5 77



|                           |                          |     |
|---------------------------|--------------------------|-----|
| PS & E PLANS-DATE 4/13/17 |                          |     |
| FMS CON. *107037/301000   |                          |     |
| REVISIONS                 |                          |     |
| DATE                      | SHEET NO.                | BY  |
| 5/22/17                   | 7, 8, 9, 10, 11, 19, 22, | MSJ |
|                           | 37, 1008, 2001, 2002     |     |
|                           | 2003                     |     |
|                           |                          |     |
|                           |                          |     |

|                  |  |              |
|------------------|--|--------------|
| REVISION         | MISSISSIPPI DEPARTMENT OF TRANSPORTATION |              |
|                  | <b>DETAILED INDEX</b>                    |              |
| DATE             | PROJ. NO. HSIP-0055-04(099)              |              |
|                  | DESOTO COUNTY                            |              |
| DESIGN TEAM      | WORKING NUMBER                           |              |
|                  | DI-1                                     |              |
| FILENAME: DI.DGN |  | SHEET NUMBER |
| DATE             |  | 2            |
| GS&P             | CHECKED                                  | DATE         |

5/23/2017 4:21 PM DI.DGN

6/1/2017 3:30 PM DI.DGN  
ROADWAY PLAN DIVISION  
MISSISSIPPI DEPARTMENT OF TRANSPORTATION

| STATE | PROJECT NO.       |
|-------|-------------------|
| MISS. | HSIP-0055-04(099) |

| DESCRIPTION OF SHEET   | WKG. NO. | SH. NO. |
|--|----------|---------|
| <b>PERMANENT PAVEMENT MARKING SHEETS (5)</b>                 |          |         |
| PAVEMENT MARKINGS - SR 302 - B.O.P. TO STA. 446+00           | PMD-1    | 78      |
| PAVEMENT MARKINGS - SR 302 - STA. 446+00 TO E.O.P.           | PMD-2    | 79      |
| PAVEMENT MARKINGS - S.W. RAMP SOUTH OF SR 302                | PMD-3    | 80      |
| PAVEMENT MARKINGS - N.W. RAMP NORTH OF SR 302                | PMD-4    | 81      |
| PAVEMENT MARKINGS - LEGEND DETAILS                           | PMD-5    | 82      |
| <b>MISCELLANEOUS ROADWAY SHEETS (41)</b>                     |          |         |
| ISLAND PAVEMENT DETAILS                                      | SD-IP-1  | 83      |
| SPECIAL DESIGN 'TYPE 2' TRENCHED SLOTTED CURB DETAILS        | SD-SDC-1 | 84      |
| SPECIAL DESIGN 'TYPE 2' ANCHORED SLOTTED CURB DETAILS        | SD-SDC-2 | 85      |
| SPECIAL DESIGN 'TYPE 3A' TRENCHED SLOTTED CURB DETAILS       | SD-SDC-3 | 86      |
| SPECIAL DESIGN 'TYPE 3A' ANCHORED SLOTTED CURB DETAILS       | SD-SDC-4 | 87      |
| CONTROL POINTS   | CPL-1    | 88      |
| VEGETATION SCHEDULE  | VS-1     | 89      |
| EROSION CONTROL DETAILS                                      | ECD-1    | 90      |
| EROSION CONTROL DETAILS                                      | ECD-2    | 91      |
| EROSION CONTROL DETAILS                                      | ECD-3    | 92      |
| EROSION CONTROL DETAILS                                      | ECD-4    | 93      |
| EROSION CONTROL DETAILS                                      | ECD-5    | 94      |
| EROSION CONTROL DETAILS                                      | ECD-6    | 95      |
| EROSION CONTROL DETAILS                                      | ECD-7    | 96      |
| EROSION CONTROL DETAILS                                      | ECD-8    | 97      |
| EROSION CONTROL DETAILS                                      | ECD-9    | 98      |
| EROSION CONTROL DETAILS                                      | ECD-10   | 99      |
| EROSION CONTROL DETAILS                                      | ECD-11   | 100     |
| EROSION CONTROL DETAILS                                      | ECD-12   | 101     |
| EROSION CONTROL DETAILS                                      | ECD-13   | 102     |
| EROSION CONTROL DETAILS                                      | ECD-14   | 103     |
| EROSION CONTROL DETAILS                                      | ECD-15   | 104     |
| EROSION CONTROL DETAILS                                      | ECD-16   | 105     |
| EROSION CONTROL DETAILS                                      | ECD-17   | 106     |
| EROSION CONTROL DETAILS                                      | ECD-18   | 107     |
| EROSION CONTROL DETAILS                                      | ECD-19   | 108     |
| EROSION CONTROL DETAILS                                      | ECD-20   | 109     |
| EROSION CONTROL DETAILS                                      | ECD-21   | 110     |
| EROSION CONTROL DETAILS                                      | ECD-22   | 111     |
| DETAILS OF TYPICAL DITCH TREATMENTS                          | DT-1     | 112     |
| DITCH TREATMENT INSTALLATION DETAIL FOR SOIL REINFORCEMNT    | DT-1A    | 113     |
| EROSION CONTROL  | EC-1     | 114     |
| EROSION CONTROL BLANKET                                      | ECB-1    | 115     |
| TYPICAL TEMPORARY EROSION CONTROL MEASURES                   | TEC-2    | 116     |
| TYPICAL TEMPORARY EROSION CONTROL MEASURES                   | TEC-3    | 117     |
| SUPERELEVATION CASE I ROTATION ABOUT CENTERLINE              | SDSE-2A  | 118     |
| SUPERELEVATION RUNOFF CASE I ROTATION ABOU CENTERLINE        | SDRO-1   | 119     |
| HIGHWAY SIGN AND BARRICADE DETAILS FOR CONSTRUCTION PROJECTS | SDTCP-10 | 120     |
| DRIVEWAYS, CURB & GUTTER, & SIDEWALK                         | SDSD-1   | 121     |
| DRIVEWAYS, INTEGRAL CURB, & SIDEWALK                         | SDSD-2   | 122     |
| GUARDRAIL: RUB RAIL HARWARE SHEET                            | GR-RR    | 123     |
| <b>PERMANENT SIGNING SHEETS (11)</b>                         |          |         |
| PERMANENT SIGNING PLAN - SR 302 - B.O.P. TO STA. 446+00      | PSP-1    | 1001    |
| PERMANENT SIGNING PLAN - SR 302 - STA. 446+00 TO E.O.P.      | PSP-2    | 1002    |
| PERMANENT SIGNING PLAN - S.W. RAMP SOUTH OF SR 302           | PSP-3    | 1003    |
| PERMANENT SIGNING PLAN - N.W. RAMP NORTH OF SR 302           | PSP-4    | 1004    |
| OVERHEAD SIGN ASSEMBLIES - EASTBOUND SR 302                  | OH-1     | 1005    |
| OVERHEAD SIGN ASSEMBLIES - WESTBOUND SR 302                  | OH-2     | 1006    |
| OVERHEAD SIGN ASSEMBLIES - SR 302 BRIDGE & SE RAMP           | OH-3     | 1007    |
| OVERHEAD SIGN ASSEMBLIES - SR 302 & NW RAMP                  | OH-4     | 1008    |
| DIRECTIONAL SIGNING DETAILS                                  | DSD-1    | 1009    |
| DIRECTIONAL SIGNING DETAILS                                  | DSD-2    | 1010    |
| DIRECTIONAL SIGNING DETAILS                                  | DSD-3    | 1011    |
| <b>TRAFFIC SIGNAL PLAN (15)</b>                              |          |         |
| TRAFFIC SIGNAL PLAN - S.R. 302 / I-55 SOUTHBOUND RAMPS       | TRS-1    | 2001    |
| TRAFFIC SIGNAL PLAN - S.R. 302 / I-55 NORTHBOUND RAMPS       | TRS-2    | 2002    |
| TRAFFIC SIGNAL PLAN - S.R. 302 / SOUTHCREST PARKWAY          | TRS-3    | 2003    |

DATE: 04/13/2017

| DESCRIPTION OF SHEET   | WKG. NO. | SH. NO.   |
|--|----------|-----------|
| <b>TRAFFIC SIGNAL (CONT'D)</b>   |          |           |
| TRAFFIC SIGNAL PLAN - DETAIL OF TRAFFIC SIGNAL HEADS, TRAFFIC SIGNAL SIGNS AND GENERAL NOTES                             | TSD-1    | 2004      |
| TRAFFIC SIGNAL PLAN - PULL BOX AND CONDUIT TRENCHING DETAILS FOR TRAFFIC SIGNAL INSTALLATION                             | TSD-3    | 2005      |
| TRAFFIC SIGNAL PLAN - SPAN WIRE AND STEEL STRAIN POLE DETAILS FOR TRAFFIC SIGNAL INSTALLATION                            | TSD-4    | 2006      |
| TRAFFIC SIGNAL PLAN - TYPICAL DETAILS OF CONTROLLER CABINET MOUNTINGS, TYPE 1 POLE ATTACHMENTS AND MISCELLANEOUS DETAILS | TSD-5    | 2007      |
| TRAFFIC SIGNAL PLAN - MAST ARM AND PEDESTAL POLE DETAILS FOR TRAFFIC SIGNAL INSTALLATION                                 | TSD-6    | 2008      |
| TRAFFIC SIGNAL PLAN - TRAFFIC CONTROL PLAN (TYPICAL INSTALLATION)  | TSD-7    | 2009      |
| SIGN FACE DETAIL   | SD-1     | 2010      |
| PULLBOX AND CONDUIT TRENCHING DETAILS  | FO-1     | 2011      |
| TERMINATION CABINET TABLES   | FO-2     | 2012      |
| FIBER SPACING DETAILS  | FO-3     | 2013      |
| COUPLING DETAILS   | FO-4     | 2014      |
| CABLE MANAGEMENT DETAILS   | FO-5     | 2015      |
| <b>LIGHTING SHEETS (5)</b>   |          |           |
| LIGHTING NOTES, ABBREVIATIONS & LEGEND   | SL-1     | 4001      |
| LIGHTING PLAN - S.R. 302 B.O.P. TO E.O.P.  | LP-1     | 4002      |
| SECONDARY POWER CONTROLLER DETAILS   | LD-1     | 4003      |
| LIGHTING DETAILS FOUNDATIONS   | LD-3     | 4004      |
| LIGHTING DETAILS   | LD-4     | 4005      |
| <b>STANDARD DRAWINGS - ROADWAY SHEETS (25)</b>   |          |           |
| PAVEMENT MARKING DETAILS FOR 4-LANE AND 5-LANE UNDIVIDED ROADWAY   | PM-2     | 6121      |
| PAVEMENT MARKING LEGEND DETAILS  | PM-5     | 6124      |
| PAVEMENT MARKING LEGEND DETAILS  | PM-6     | 6125      |
| GUARD RAIL: "W" BEAM (WOOD POSTS)  | GR-1     | 6180      |
| GUARD RAIL: THRIE BEAM (WOOD POSTS)  | GR-1A    | 6181      |
| GUARD RAIL: "W" BEAM (STEEL POSTS)   | GR-1B    | 6182      |
| GUARD RAIL: MODIFIED THRIE BEAM (STEEL POSTS)  | GR-1C    | 6183      |
| GUARD RAIL: TYPE 1 CABLE ANCHORAGE (FOUNDATION TUBE)   | GR-3     | 6192      |
| GUARD RAIL: TYPE 1 CABLE ANCHORAGE (CONCRETE FOOTING)  | GR-3A    | 6193      |
| GUARD RAIL: TYPICAL INSTALLATION FOR ROADSIDE HAZARDS ON DIVIDED HIGHWAYS  | GR-4C    | 6197      |
| GUARD RAIL: MISCELLANEOUS HARDWARE   | GR-HW    | 6202      |
| STANDARD DIRECTIONAL (GUIDE) SIGNS   | SN-1     | 6220      |
| ROUTE SHIELDS AND "EXIT ONLY" PANELS   | SN-2     | 6221      |
| STANDARD ROADSIDE SIGNS  | SN-3     | 6222      |
| TYPICAL INSTALLATION OF DELINEATORS  | SN-8A    | 6234      |
| TYPICAL GUARDRAIL DELINEATION  | SN-8C    | 6236      |
| TRAFFIC CONTROL PLAN MOBILE OPERATIONS MULTILANE ROADS AND TWO-LANE ROADS  | TCP-11   | 6260      |
| TEMPORARY STRIPING OF TRAFFIC CONTROL 4-LAND AND 5-LANE UNDIVIDED HIGHWAYS   | TCP-16   | 6265      |
| DETAILS OF PAVED FLUMES  | PF-1     | 6291      |
| JUNCTION BOX FOR PIPE CULVERT  | JB-1     | 6302      |
| JUNCTION BOX TYPE 2 FOR TRAFFIC LOAD (MAXIMUM "W" = 9'-3")   | JB-2     | 6304      |
| DETAILS OF GRATES FOR GUTTER INLETS  | IG-2     | 6315      |
| GUTTER INLET FOR TYPE 2 CURB AND STORM SEWER ALONG ROADWAY   | GI-1A    | 6317      |
| STORM SEWER STRUCTURE TYPE SS-2  | SS-2     | 6322      |
| FLARED END SECTION FOR CONCRETE PIPE   | FE-1     | 6328      |
| <b>CROSS SECTIONS (12)</b>   |          |           |
| S.R. 302   |          | 9001-9008 |
| S.E. RAMP  |          | 9009-9010 |
| N.W. RAMP  |          | 9011-9012 |

TOTAL SHEETS: (191)

|   |             |      |                          |
|---|-------------|------|--------------------------|
| MISSISSIPPI DEPARTMENT OF TRANSPORTATION<br><b>DETAILED INDEX</b> |             |      |                          |
| PROJECT NO. HSIP-0055-04(099)<br>DESOTO COUNTY                    |             |      |                          |
| WORKING NUMBER<br><b>DI-2</b>                                     |             |      |                          |
| SHEET NUMBER<br><b>3</b>  |             |      |                          |
| DATE  | DESIGN TEAM | GS&P | CHECKED _____ DATE _____ |
| BY  | REVISION    | DATE | DESCRIPTION              |

|       |                   |
|-------|-------------------|
| STATE | PROJECT NO.       |
| MISS. | HSIP-0055-04(099) |

# GENERAL NOTES

- (1) THE LOCATION AND SPACING OF SIGNS, SHOWN ON THE TRAFFIC CONTROL PLANS, ARE APPROXIMATE AND MAY BE ADJUSTED AS NECESSARY TO FIT FIELD CONDITIONS.
- (2) ALL TRAFFIC CONTROL DEVICES ON THIS PROJECT SHALL COMPLY WITH PART VI OF THE MUTCD (LATEST EDITION).
- (3) ALL PLASTIC DRUMS SHALL HAVE A BALLASTING COLLAR MADE FROM RECYCLED TRUCK TIRES OR OTHER SUITABLE MATERIAL.
- (4) 25% SHRINKAGE FACTOR USED IN THE EARTHWORK CALCULATIONS IS FOR DESIGN ESTIMATING PURPOSES ONLY.
- (5) THE CONTRACTOR SHALL BE RESPONSIBLE FOR PROTECTING EXISTING STRUCTURES SUCH AS, BUT NOT LIMITED TO, PIPES, INLETS, APRONS, AND BRIDGES FROM DAMAGE WHICH MIGHT OCCUR DURING CONSTRUCTION. THE CONTRACTOR SHALL REPLACE OR REPAIR, AS DIRECTED BY THE ENGINEER, ANY STRUCTURES DAMAGED DURING THE LIFE OF THE CONTRACT. NO PAYMENT WILL BE MADE FOR REPLACEMENT OR REPAIR OF DAMAGED ITEMS.
- (6) ALL PIPE JOINTS ARE TO BE WRAPPED IN 24-INCH WIDE TYPE V GEOTEXTILE FABRIC. ALL PICKUP HOLES SHALL BE PLUGGED WITH PLASTIC INSERTS AND BITUMINOUS SEALER TO THE SATISFACTION OF THE ENGINEER (NOT A SEPARATE PAY ITEM).
- (7) VOIDS CREATED BY THE REMOVAL OF, BUT NOT LIMITED TO, POSTS, CONCRETE ANCHORS, AND FOOTINGS SHALL BE BACKFILLED AND TAMPED IN ACCORDANCE WITH SECTION 203 OF THE MISSISSIPPI STANDARD SPECIFICATIONS FOR ROAD AND BRIDGE CONSTRUCTION, THE COST OF WHICH WILL BE ABSORBED IN OTHER ITEMS BID.
- (8) UTILITIES ON THE DRAWINGS ARE SHOWN IN THEIR ORIGINAL LOCATION BASED UPON THE BEST INFORMATION AVAILABLE TO THE ENGINEER. UTILITIES THAT WERE FOUND TO BE IN CONFLICT WITH CONSTRUCTION HAVE BEEN RELOCATED. PERMITS ARE ON FILE WITH THE DEPARTMENT SHOWING THE APPROXIMATE LOCATION OF UTILITIES RELOCATED WITHIN THE RIGHT-OF-WAY. THE ENGINEER CAN NOT AND DOES NOT WARRANT THAT THIS INFORMATION IS COMPLETE OR ACCURATE. THE CONTRACTOR MUST COORDINATE DIRECTLY WITH THE INVOLVED UTILITY OWNERS TO HAVE UNDERGROUND UTILITY LINES FIELD LOCATED IN ADVANCE OF CONSTRUCTION.
- (9) WORK ON STRUCTURES FOR THIS PROJECT REQUIRES EXCAVATION IN THE IMMEDIATE VICINITY OF TRAFFIC AND ADJACENT PROPERTIES. THEREFORE, THE RISK OF A FAILURE OCCURRING DURING EXCAVATION REQUIRES THAT EXTREME CAUTION BE EXERCISED. THE CONTRACTOR SHALL BE RESPONSIBLE FOR PLACING WHAT BRACING, SHORING, OR GROUND SUPPORT SYSTEM THAT IS DEEMED NECESSARY TO PREVENT A FAILURE AND PROTECT THE PERSONS WORKING NEAR THE EXCAVATION, THE PUBLIC THAT MAY BE ABOVE THE EXCAVATION OR ANY STRUCTURES ADJACENT TO THE EXCAVATION. ALL COSTS FOR DESIGNING, DRAWING, AND CONSTRUCTING THE FACILITY SHALL BE INCLUDED IN THE PRICE BID FOR CONTRACT ITEMS.
- (10) SOME WORK IS REQUIRED OUTSIDE THE PROJECT LIMITS. NO ADDITIONAL COMPENSATION WILL BE MADE FOR SUCH WORK EXCEPT AS PROVIDED BY SPECIFIC PAY ITEMS INCLUDED IN THE PLANS.
- (11) WIRE FENCE BACKING WILL BE REQUIRED FOR ALL SILT FENCE. (SEE WK. NO. ECD-3)
- (12) FOR LIST OF PUBLIC UTILITIES, SEE WORKING NO. 3LT & 3RT
- (13) ALL POST LENGTHS FOR SIGNS SHALL BE VERIFIED IN THE FIELD PRIOR TO FABRICATION.
- (14) FLUORESCENT ORANGE SHEETING SHALL BE USED ON ALL CONSTRUCTION AND TRAFFIC CONTROL SIGNS EXCEPT FOR THOSE DESIGNATED ON THE PLANS TO BE BLACK LEGEND AND BORDER ON WHITE BACKGROUND.
- (15) VEGETATIVE MATERIAL WILL BE REMOVED PRIOR TO PLACEMENT OF GRANULAR MATERIAL. THE COST OF WHICH SHALL BE ABSORBED IN OTHER BID ITEMS.
- (16) THE CONTRACTOR SHALL REPAIR ANY DAMAGE TO THE SURFACE TREATED SHOULDER THAT MIGHT OCCUR DURING CONSTRUCTION. ANY REPAIR TO SHOULDER WILL BE IN ACCORDANCE WITH SECTION 410 OF THE MISSISSIPPI STANDARD SPECIFICATIONS FOR ROAD AND BRIDGE CONSTRUCTION. NO PAYMENT WILL BE MADE FOR REPAIR OF DAMAGED SHOULDER.
- (17) THE CONTRACTOR SHALL COORDINATE WITH THE CONTRACTOR FROM ADJACENT PROJECT(S) IN IMPLEMENTING THE TRAFFIC CONTROL PLAN AS DIRECTED BY THE ENGINEER. ALL CONFLICTING SIGNS SHALL BE COVERED OR REMOVED AS DIRECTED BY THE ENGINEER.
- (18) THE CONTRACTOR SHALL COVER ANY TEMPORARY TRAFFIC CONTROL SIGNS SHOWN IN THE TRAFFIC CONTROL PLAN THAT DO NOT APPLY TO THE CURRENT PHASE
- (19) REMOVAL OF RAISED PAVEMENT MARKERS THAT ARE IN CONFLICT WITH REQUIRED CONSTRUCTION IS NOT CONSIDERED A SEPARATE PAY ITEM. COST TO BE ABSORBED IN OTHER ITEMS BID.
- (20) REMOVAL OF OBJECT MARKERS IS NOT CONSIDERED A SEPARATE PAY ITEM, AND SHALL BE ABSORBED IN OTHER ITEMS BID.
- (21) WHERE MILLING IS REQUIRED, THE CONTRACTOR SHALL PROVIDE OUTLETS IN THE EXISTING SHOULDERS AT SUFFICIENT INTERVALS TO PREVENT POOLING OR STANDING WATER ON THE MILLED SURFACE, THE COST OF WHICH SHALL BE ABSORBED IN OTHER ITEMS BID.

# GENERAL NOTES (CONTINUED)

- OF THE CONTRACTOR TO ENSURE THAT SILT DOES NOT LEAVE THE RIGHT OF WAY OR CONTAMINATE WATERS OF THE U. S. DURING CONSTRUCTION. THE CONTRACTOR SHALL SUBMIT AN EROSION CONTROL PLAN PRIOR TO COMMENCEMENT OF WORK AND MAINTAIN THE PLAN DURING CONSTRUCTION. ANY ADDITIONAL SILT BASINS NOT SHOWN IN THE PLANS SHALL BE INCLUDED IN THE CONTRACTOR'S EROSION CONTROL PLAN PRIOR TO SUBMITTING FOR APPROVAL.
- (23) PRIOR TO EARTHWORK OPERATIONS, THE EXISTING TOP 4" TOPSOIL IS TO BE STRIPPED AND STOCKPILED. AFTER THE GRADING OPERATIONS ARE COMPLETED, SAID TOPSOIL SHALL BE PLACED ON ALL AREAS THAT ARE NOT TO BE PAVED OR OTHERWISE PROTECTED, IN ACCORDANCE WITH SECTION 211 OF THE SPECIFICATIONS, OR THE VEGETATION SCHEDULE (SEE WK. SH. VS-1). EXISTING TOPSOIL AND ALL COSTS ASSOCIATED WITH STRIPPING, HAULING, STOCKPILING, AND PLACEMENT OF THE EXISTING TOPSOIL IS TO BE ABSORBED IN OTHER EARTHWORK ITEMS.
  - (24) THE CONTRACTOR IS RESPONSIBLE FOR FIELD-VERIFICATION OF EXISTING GRADES AND MAKING ADJUSTMENTS AS NECESSARY WITH THE APPROVAL OF THE PROJECT ENGINEER.
  - (25) TEMPORARY STRIPING SHALL CONFORM TO FINISHED STRIPE SPECIFICATIONS FOR ALIGNMENT, NEATNESS, AND STRAIGHTNESS.
  - (26) ALL ITEMS OF WORK ASSOCIATED WITH THE INSTALLATION OF A CONSTRUCTION ENTRANCE SHALL BE ABSORBED IN OTHER ITEMS OF WORK.
  - (27) ERECTION DATES ARE TO BE LEGIBLY WRITTEN IN BOLD, BLACK MARKINGS ON THE BACK OF ALL PERMANENT SIGNS WITH A PERMANENT MARKING STICK THAT IS WATERPROOF, FADE RESISTANT, AND MARKS ON WET OR DRY SURFACES.
  - (28) IF COLORS ARE USED ON PLAN/PROFILE SHEETS, THEY ARE INTENDED TO VISUALLY EASE THE LOCATION OF ELEMENTS FOR USERS OF THESE DRAWINGS. ALTHOUGH THE INTENT IS TO CATEGORIZE EVERYTHING AS EITHER EXISTING OR PROPOSED, IT IS THE END USER'S RESPONSIBILITY TO ENSURE ALL ELEMENTS ARE INTERPRETED CORRECTLY REGARDLESS OF COLOR.
  - (29) ALL ADDENDA TO THESE PLANS WILL BE POSTED TO WWW.MDOT.MS.GOV UNDER THE PROPOSAL ADDENDA COLUMN. BIDDERS ARE ADVISED THAT HARD COPIES OF ANY ADDENDA FOR THIS PROJECT WILL NOT BE MAILED. IT IS THE BIDDER'S RESPONSIBILITY TO CHECK AND SEE IF ANY ADDENDA HAVE BEEN POSTED FOR THIS PROJECT.
  - (30) CURB AND GUTTER VERTICAL DIMENSIONS SHOWN IN THE DETAIL DRAWINGS ARE FOR A CURB IN THE "CATCH" CONFIGURATION AND SHALL BE CONSIDERED TO BE MINIMUM DIMENSIONS. THE DIMENSIONS MAY BE MODIFIED AS NECESSARY FOR "SPILL" CURB AND GUTTER, BUT SHALL NOT BE LESS THAN THE MINIMUM SHOWN.
  - (31) THE COST FOR REMOVAL OF ALL HEADWALLS AND WINGWALLS (PIPES, BOX CULVERTS, BOX BRIDGES) SHALL BE ABSORBED IN OTHER ITEMS BID.
  - (32) BIDDERS BE ADVISED, THIS SET OF PLANS IS IMPLEMENTING PAY ITEMS FROM THE 2017 STANDARD SPECIFICATIONS AND IS UTILIZING THE CURRENT 1998 VERSION OF THE ROADWAY DESIGN STANDARD DRAWINGS, SPECIAL DESIGN SHEETS, AND TRAFFIC SIGNAL DETAIL SHEETS. IF ANY DISCREPANCIES ARE FOUND BETWEEN THE REFERENCE TO PAY ITEMS IN THE DRAWINGS AND THE 2017 PAY ITEMS, THEN IT WILL BE UNDERSTOOD THAT THE 2017 PAY ITEMS WILL BE USED AND PAID FOR AS IS LISTED IN THE SUMMARY QUANTITIES.

4/11/2017 2:25 PM GN-1.DGN

|   |                 |
|---|-----------------|
| MISSISSIPPI DEPARTMENT OF TRANSPORTATION<br><b>GENERAL NOTES</b>              |                 |
| PROJ. NO. HSIP-0055-04(099)<br>DESOTO COUNTY<br>WORKING NUMBER<br><b>GN-1</b> |                 |
| FILENAME: GN-1.DGN<br>SHEET NUMBER<br><b>4</b>                                |                 |
| DESIGN TEAM<br>GS&P   | CHECKED<br>DATE |