

SECTION 905 -- PROPOSAL (CONTINUED)

I (We) hereby certify by digital signature and electronic submission via Bid Express of the Section 905 proposal below, that all certifications, disclosures and affidavits incorporated herein are deemed to be duly executed in the aggregate, fully enforceable and binding upon delivery of the bid proposal. I (We) further acknowledge that this certification shall not extend to the bid bond or alternate security which must be separately executed for the benefit of the Commission. This signature does not cure deficiencies in any required certifications, disclosures and/or affidavits. I (We) also acknowledge the right of the Commission to require full and final execution on any certification, disclosure or affidavit contained in the proposal at the Commission's election upon award. Failure to so execute at the Commission's request within the time allowed in the Standard Specifications for execution of all contract documents will result in forfeiture of the bid bond or alternate security.

Bidder acknowledges receipt of and has added to and made a part of the proposal and contract documents the following addendum (addenda):

ADDENDUM NO. 1 DATED 8/10/2017 ADDENDUM NO. DATED
 ADDENDUM NO. DATED ADDENDUM NO. DATED

Number	Description
1	Revised or Added Plan Sheet Nos. 2, 84, & 86; Amendment EBS Download Required.

TOTAL ADDENDA: 1
 (Must agree with total addenda issued prior to opening of bids)

Respectfully Submitted,

DATE _____

 Contractor

BY _____
 Signature

TITLE _____

ADDRESS _____

CITY, STATE, ZIP _____

PHONE _____

FAX _____

E-MAIL _____

(To be filled in if a corporation)

Our corporation is chartered under the Laws of the State of _____ and the names, titles and business addresses of the executives are as follows:

 President Address

 Secretary Address

 Treasurer Address

The following is my (our) itemized proposal.

HSIP-0055-04(099)/ 107037301000

Desoto County(ies)

ADDENDUM

DESCRIPTION OF SHEET

WKG. SH. NO.

DESCRIPTION OF SHEET

STATE PROJECT NO. MISS. HSP-0855-04899

WKG. SH. NO.

BOARDWAX

TITLE SHEET (1)

DETAILED INDEX & GENERAL NOTES (1)

DETAIL INDEX (ROADWAY)

GENERAL NOTES

JOURNAL SECTION SHEETS (1)

TYPICAL SECTIONS - SR 302 / GOODMAN RD WEST OF I-56 & I-55 OFF RAMP

TYPICAL SECTIONS - SR 302 / GOODMAN RD EAST OF I-56 & I-55 OFF RAMP

QUANTITIES SHEETS (1)

SUMMARY OF QUANTITIES

SUMMARY OF QUANTITIES

SUMMARY OF QUANTITIES

SUMMARY OF QUANTITIES

ESTIMATED QUANTITIES - SIGNAGE ITEMS

ESTIMATED QUANTITIES - EROSION CONTROL

ESTIMATED QUANTITIES - DRAINAGE STRUCTURES

ESTIMATED QUANTITIES - CONSTRUCTION CURB & GUTTER, GUARDRAIL AND DELINEATORS

ESTIMATED QUANTITIES - PAVEMENT MARKINGS

ESTIMATED QUANTITIES - STANDARD SIGNS & ASSEMBLIES

ESTIMATED QUANTITIES - TRAFFIC CONTROL SIGNS

ESTIMATED QUANTITIES - SIGNALS

ESTIMATED QUANTITIES - LIGHTING

EROSION CONTROL PLAN SHEETS (1)

SR-302 / GOODMAN RD LEFT - B.O.P. TO STA. 45+00

SR-302 / GOODMAN RD RIGHT - B.O.P. TO STA. 45+00

SR-302 / GOODMAN RD LEFT - 45+00 TO E.O.P.

SR-302 / GOODMAN RD @ I-55 RAMP - STA. 67+14.26 TO STA. 65+28

SR-302 / GOODMAN RD @ N.W. RAMP - STA. 61+14.26 TO STA. 62+14

EROSION CONTROL PLAN SHEETS (1)

EROSION CONTROL PLAN - SR-302 LEFT - B.O.P. TO STA. 45+00

EROSION CONTROL PLAN - SR-302 RIGHT - B.O.P. TO STA. 45+00

EROSION CONTROL PLAN - SR-302 LEFT - 45+00 TO E.O.P.

EROSION CONTROL PLAN - SR-302 RIGHT - 45+00 TO E.O.P.

EROSION CONTROL PLAN - SR-302 @ I-55 RAMP - STA. 67+14.26 TO STA. 65+28

EROSION CONTROL PLAN - SR-302 @ N.W. RAMP - STA. 61+14.26 TO STA. 62+14

TRAFFIC CONTROL SHEETS (1)

TRAFFIC CONTROL PLAN - CONSTRUCTION PHASING NOTES

TRAFFIC CONTROL PLAN - PHASE 1A - CONSTRUCTION TYPICAL SECTIONS

TRAFFIC CONTROL PLAN - PHASE 1B & 1C - CONSTRUCTION TYPICAL SECTIONS

TRAFFIC CONTROL PLAN - PHASE 1D & 1E - CONSTRUCTION TYPICAL SECTIONS

TRAFFIC CONTROL PLAN - PHASE 1A - SR 302 / GOODMAN RD @ I-55 RAMP

TRAFFIC CONTROL PLAN - PHASE 1A - SR 302 / GOODMAN RD @ I-55 RAMP SOUTH OF SR 302

TRAFFIC CONTROL PLAN - PHASE 1B - SR 302 / GOODMAN RD @ I-55 RAMP SOUTH OF SR 302

TRAFFIC CONTROL PLAN - PHASE 1B - SR 302 / GOODMAN RD @ I-55 RAMP SOUTH OF SR 302

TRAFFIC CONTROL PLAN - PHASE 1C - SR 302 / GOODMAN RD @ I-55 RAMP SOUTH OF SR 302

TRAFFIC CONTROL PLAN - PHASE 1C - SR 302 / GOODMAN RD @ I-55 RAMP SOUTH OF SR 302

TRAFFIC CONTROL PLAN - PHASE 1D - SR 302 / GOODMAN RD @ I-55 RAMP SOUTH OF SR 302

TRAFFIC CONTROL PLAN - PHASE 1D - SR 302 / GOODMAN RD @ I-55 RAMP SOUTH OF SR 302

TRAFFIC CONTROL PLAN - PHASE 1E - SR 302 / GOODMAN RD @ I-55 RAMP SOUTH OF SR 302

TRAFFIC CONTROL PLAN - PHASE 1E - SR 302 / GOODMAN RD @ I-55 RAMP SOUTH OF SR 302

TRAFFIC CONTROL PLAN - PHASE 2 - SR 302 / GOODMAN RD @ I-55 RAMP SOUTH OF SR 302

TRAFFIC CONTROL PLAN - PHASE 2 - SR 302 / GOODMAN RD @ I-55 RAMP SOUTH OF SR 302

TRAFFIC CONTROL PLAN - PHASE 3A - SR 302 / GOODMAN RD @ I-55 RAMP SOUTH OF SR 302

TRAFFIC CONTROL PLAN - PHASE 3A - SR 302 / GOODMAN RD @ I-55 RAMP SOUTH OF SR 302

TRAFFIC CONTROL PLAN - PHASE 3B - SR 302 / GOODMAN RD @ I-55 RAMP SOUTH OF SR 302

TRAFFIC CONTROL PLAN - PHASE 3B - SR 302 / GOODMAN RD @ I-55 RAMP SOUTH OF SR 302

TRAFFIC CONTROL PLAN - PHASE 3C - SR 302 / GOODMAN RD @ I-55 RAMP SOUTH OF SR 302

TRAFFIC CONTROL PLAN - PHASE 3C - SR 302 / GOODMAN RD @ I-55 RAMP SOUTH OF SR 302

TRAFFIC CONTROL PLAN - PHASE 3D - SR 302 / GOODMAN RD @ I-55 RAMP SOUTH OF SR 302

TRAFFIC CONTROL PLAN - PHASE 3D - SR 302 / GOODMAN RD @ I-55 RAMP SOUTH OF SR 302

TRAFFIC CONTROL PLAN - PHASE 3E - SR 302 / GOODMAN RD @ I-55 RAMP SOUTH OF SR 302

TRAFFIC CONTROL PLAN - PHASE 3E - SR 302 / GOODMAN RD @ I-55 RAMP SOUTH OF SR 302

TRAFFIC CONTROL PLAN - PHASE 4 - SR 302 / GOODMAN RD @ I-55 RAMP SOUTH OF SR 302

TRAFFIC CONTROL PLAN - PHASE 4 - SR 302 / GOODMAN RD @ I-55 RAMP SOUTH OF SR 302

TEMPORARY SIGNAL LAYOUT DETAILS SR 302 / I-55 SB - PHASES 1A, 1B, 1C, & 2

TEMPORARY SIGNAL LAYOUT DETAILS SR 302 / I-55 SB - PHASES 2, 3A, & 3B

TEMPORARY SIGNAL LAYOUT DETAILS SR 302 / I-55 NB - PHASES 1A, 1B, 1C, & 2

TEMPORARY SIGNAL LAYOUT DETAILS SR 302 / I-55 NB - PHASES 2, 3A, & 3B

TEMPORARY SIGNAL LAYOUT DETAILS SR 302 / SOUTHBOUND - PHASES 1A, 1B, 1C, & 2

TEMPORARY SIGNAL LAYOUT DETAILS SR 302 / SOUTHBOUND - PHASES 2, 3A, & 3B

FORM GRABAGE (1)

SR-302 AT I-55 NORTHWEST RAMP INTERSECTION

SR-302 AT I-55 SOUTHWEST RAMP INTERSECTION

DETAIL OF INTERSECTION SHEETS (1)

DETAIL OF INTERSECTION - SR 302 / GOODMAN RD @ INTERSECTION S.W.

DETAIL OF INTERSECTION - SR 302 / GOODMAN RD @ SOUTHWEST RAMP

DETAIL OF INTERSECTION - SR 302 / GOODMAN RD @ I-55 OVERPASS

DETAIL OF INTERSECTION - SR 302 / GOODMAN RD @ I-55 NORTHBOUND RAMP

DETAIL OF INTERSECTION - SR 302 / GOODMAN RD @ I-55 SOUTHBOUND RAMP

WKG. NO.	SH. NO.
TC-80	37
TC-81	38
TC-82	39
TC-83	40
TC-84	41
TC-85	42
TC-86	43
TC-87	44
TC-88	45
TC-89	46
TC-90	47
TC-91	48
TC-92	49
TC-93	50
TC-94	51
TC-95	52
TC-96	53
TC-97	54
TC-98	55
TC-99	56
TC-100	57
TC-101	58
TC-102	59
TC-103	60
TC-104	61
TC-105	62
TC-106	63
TC-107	64
TC-108	65
TC-109	66
TC-110	67
TC-111	68
TC-112	69
TC-113	70
FO-1	71
FO-2	72
IS-1	73
IS-2	74
IS-3	75
IS-4	76
IS-5	77

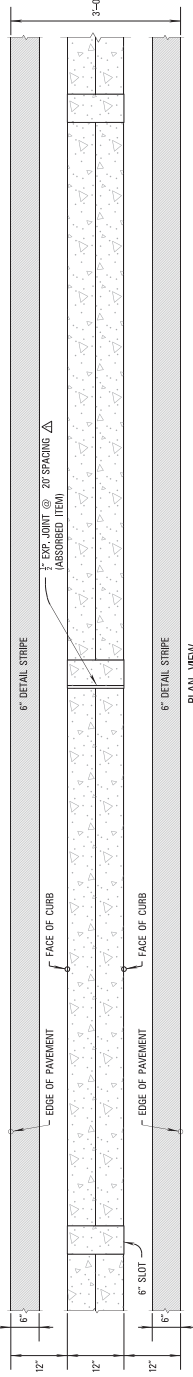


DATE	BY
7/27/17	J. K. B. III, M. J. M. J.
8/15/17	M. B.

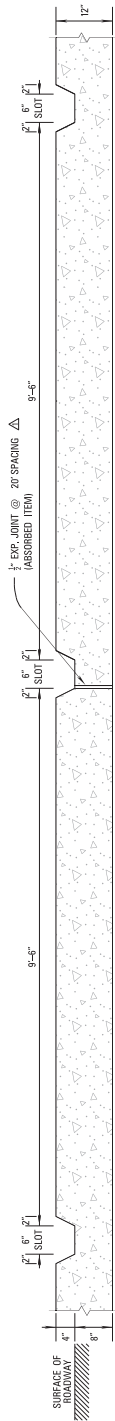
MISSISSIPPI DEPARTMENT OF TRANSPORTATION
DETAILED INDEX

PROJECT NO. HSP-0855-04(099)
DESOTO COUNTY

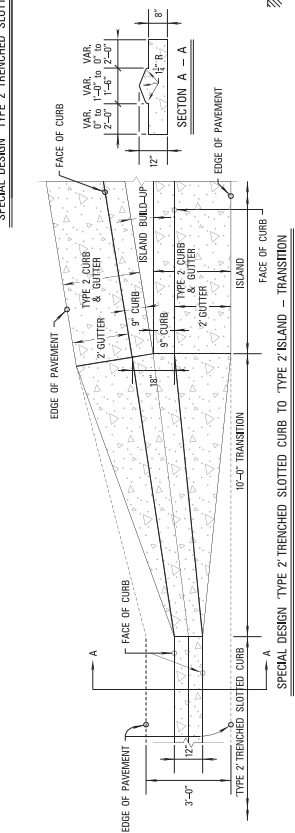
FILENAME: D:\DGN
SHEET NUMBER: D1-1
SHEET NUMBER: 2



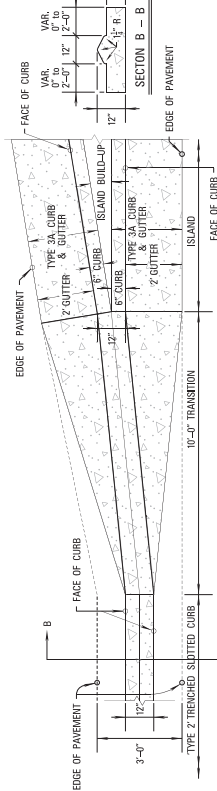
SPECIAL DESIGN TYPE 2 TRENCHED SLOTTED CURB



SPECIAL DESIGN TYPE 2 TRENCHED SLOTTED CURB



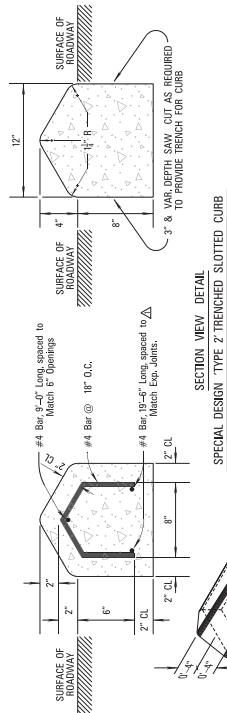
SPECIAL DESIGN TYPE 2 TRENCHED SLOTTED CURB TO TYPE 2 ISLAND - TRANSITION



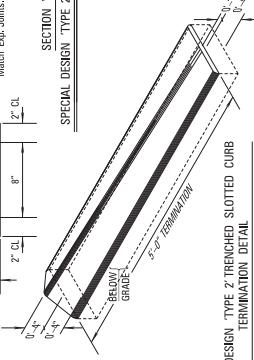
SPECIAL DESIGN TYPE 2 TRENCHED SLOTTED CURB TO TYPE 3A ISLAND - TRANSITION

NOTES: DRAINAGE OPENINGS ("SLOTS") SHALL BE PLACED AT LEAST EVERY 10' OF CURB LENGTH. (CENTER-TO-CENTER). SLOTS SHALL HAVE A "DEPTH" TO BE FLUSH WITH THE ADJACENT PAVEMENT. SLOTS SHALL BE MIN. 6" LONG, & EXTEND THE FULL WIDTH OF THE CURB.

LENGTH OF RECD. DRAINAGE OPENINGS WILL BE INCLUDED IN THE CURB PAY ITEM AND WILL NOT BE MEASURED SEPARATELY.



SECTION VIEW DETAIL SPECIAL DESIGN TYPE 2 TRENCHED SLOTTED CURB



SPECIAL DESIGN TYPE 2 TRENCHED SLOTTED CURB TERMINATION DETAIL

MISSISSIPPI DEPARTMENT OF TRANSPORTATION
SPECIAL DESIGN
TYPE 2 TRENCHED SLOTTED CURB
DETAILS

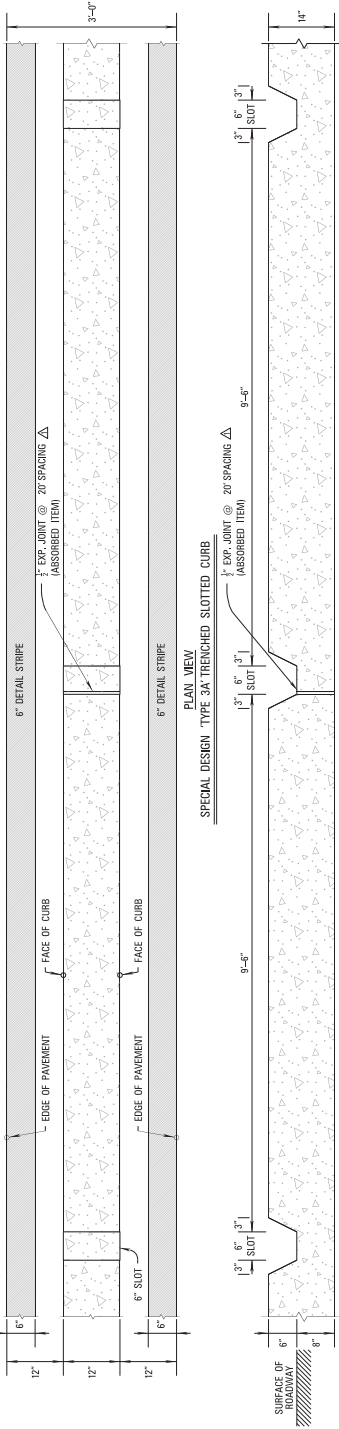
REV	DATE	DESCRIPTION

PROJ. NO. HSP-0855-04(099)
DESOTO COUNTY
FILENAME: SD-SDC-LOGN

DATE	
CHECKED	
DRAWN	
CHECKED	
DESIGNED	
DATE	

84

STATE	PROJECT NO.
MISS.	HSP-0855-04899



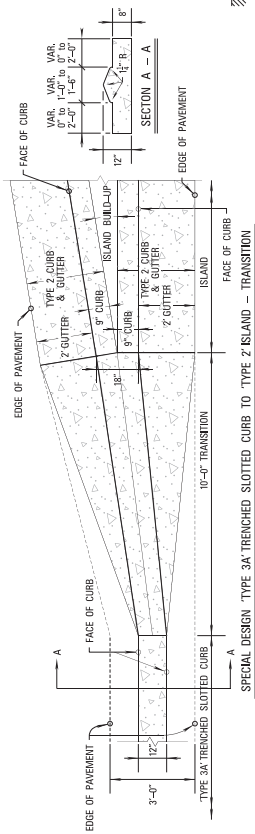
PLAN VIEW SPECIAL DESIGN TYPE 3A TRENCHED SLOTTED CURB

ELEVATION VIEW SPECIAL DESIGN TYPE 3A TRENCHED SLOTTED CURB

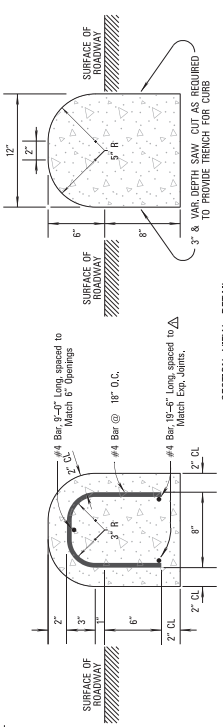
PLAN VIEW SPECIAL DESIGN TYPE 3A TRENCHED SLOTTED CURB

ELEVATION VIEW SPECIAL DESIGN TYPE 3A TRENCHED SLOTTED CURB

NOTES: DRAINAGE OPENINGS ("SLOTS") SHALL BE PLACED AT LEAST EVERY 10' OF CURB LENGTH (CENTER-TO-CENTER). SLOTS SHALL HAVE A "DEPTH" TO BE FLUSH WITH THE ADJACENT PAVEMENT. SLOTS SHALL BE MIN. 6" LONG, & EXTEND THE FULL WIDTH OF THE CURB.
 LENGTH OF RECD. DRAINAGE OPENINGS WILL BE INCLUDED IN THE CURB PAY ITEM AND WILL NOT BE MEASURED SEPARATELY.



SPECIAL DESIGN TYPE 3A TRENCHED SLOTTED CURB TO TYPE 2 ISLAND - TRANSITION



SECTION VIEW DETAIL SPECIAL DESIGN TYPE 3A TRENCHED SLOTTED CURB

SECTION VIEW DETAIL SPECIAL DESIGN TYPE 3A TRENCHED SLOTTED CURB

NO.	DATE	BY	CHECKED

MISSISSIPPI DEPARTMENT OF TRANSPORTATION
 SPECIAL DESIGN
 TYPE 3A TRENCHED
 SLOTTED CURB
 DETAILS

N.T.S