

SECTION 905 -- PROPOSAL (CONTINUED)

I (We) hereby certify by digital signature and electronic submission via Bid Express of the Section 905 proposal below, that all certifications, disclosures and affidavits incorporated herein are deemed to be duly executed in the aggregate, fully enforceable and binding upon delivery of the bid proposal. I (We) further acknowledge that this certification shall not extend to the bid bond or alternate security which must be separately executed for the benefit of the Commission. This signature does not cure deficiencies in any required certifications, disclosures and/or affidavits. I (We) also acknowledge the right of the Commission to require full and final execution on any certification, disclosure or affidavit contained in the proposal at the Commission's election upon award. Failure to so execute at the Commission's request within the time allowed in the Standard Specifications for execution of all contract documents will result in forfeiture of the bid bond or alternate security.

Bidder acknowledges receipt of and has added to and made a part of the proposal and contract documents the following addendum (addenda):

ADDENDUM NO. <u> 1 </u>	DATED <u> 9/19/2017 </u>	ADDENDUM NO. <u> </u>	DATED <u> </u>
ADDENDUM NO. <u> </u>	DATED <u> </u>	ADDENDUM NO. <u> </u>	DATED <u> </u>
ADDENDUM NO. <u> </u>	DATED <u> </u>	ADDENDUM NO. <u> </u>	DATED <u> </u>

Number	Description
1	Revised Table of Contents; Revised NTB No. 397; Add NTB Nos. 399 & 400; Bid Items; Added or Revised Plan Sht. Nos. 1, 2, 5, 13, 14, & 76; Amendment EBS Download Required.

TOTAL ADDENDA: 1
(Must agree with total addenda issued prior to opening of bids)

Respectfully Submitted,

DATE _____

Contractor

BY _____
Signature

TITLE _____

ADDRESS _____

CITY, STATE, ZIP _____

PHONE _____

FAX _____

E-MAIL _____

(To be filled in if a corporation)

Our corporation is chartered under the Laws of the State of _____ and the names, titles and business addresses of the executives are as follows:

_____ President	_____ Address
_____ Secretary	_____ Address
_____ Treasurer	_____ Address

The following is my (our) itemized proposal.
HSIP-2839-00(018)/ 106953301000
Lee County(ies)

Revised 01/26/2016

**MISSISSIPPI DEPARTMENT OF TRANSPORTATION
TABLE OF CONTENTS**

**PROJECT: HSIP-2839-00(018)/106953301 - Lee
HSIP-2839-00(018)/106953302 - Lee**

Section 901 - Advertisement

Section 904 - Notice to Bidders

#1	Governing Specification
#2	Status of ROW, w/ Attachments
#3	Final Cleanup
#5	Storm Water Discharge Associated with Construction Activities (≥ 1 and < 5 Acres)
#7	Disadvantaged Business Enterprise In Federal-Aid Highway Construction, w/ Supplement
#8	Errata and Modifications to the 2017 Standard Specifications
#9	Federal Bridge Formula
#10	DUNS Requirement for Federal Funded Projects
#11	Additional Erosion Control Requirements
#12	MASH Compliant Devices
#13	Safety Edge
#113	Tack Coat
#296	Reduced Speed Limit Signs
#328	Contract Time
#329	Specialty Items
#330	Cooperation Between Contractors
#331	Networking Equipment
#332	Traffic Management Center (TMC) Modifications
#333	Restricted Area
#334	ITS Equipment Cabinet Modifications
#335	Sequence of Operations
#397	Lane Closure Restrictions and Additional Work Requirements
#398	Project Number Change
#399	Plan Correction
#400	Additional Milling Requirements
906	Required Federal Contract Provisions -- FHWA 1273, w/Supplements

Section 907 - Special Provisions

907-103-2	Award and Execution of Contract
907-107-1	Contractor's Erosion Control Plan
907-416-1	High Friction Surface Treatment
907-619-1	Construction Safety Fence
907-624-1	Inverted Profile Thermoplastic Traffic Stripe
907-650-2	On-Street Video Equipment
907-659-2	Traffic Management Center (TMC) Modifications
907-661-4	Fiber Optic Cable (OSP)
907-663-2	Networking Equipment

PROJECT: HSIP-2839-00(018)/106953301 - Lee
HSIP-2839-00(018)/106953302 - Lee

907-666-2 Bluetooth Detection System (BDS)

Section 905 - Proposal, Proposal Bid Items, Combination Bid Proposal

Certification of Performance - Prior Federal-Aid Contracts

Certification Regarding Non-Collusion, Debarment and Suspension

SAM.GOV Registration and DUNS Number

Section 902 - Contract Form

Section 903 - Contract Bond Forms

Form -- OCR-485

(REVISIONS TO THE ABOVE WILL BE INDICATED ON THE SECOND SHEET
OF SECTION 905 AS ADDENDA)

09/20/2017 02:14 PM

MISSISSIPPI DEPARTMENT OF TRANSPORTATION

SECTION 904 - NOTICE TO BIDDERS NO. 397

CODE: (SP)

DATE: 09/19/2017

SUBJECT: Lane Closure Restrictions and Additional Work Requirements

PROJECT: HSIP-2839-00(018) / 106953301 & 302 – Lee County

Bidders are hereby advised of the following lane closure restrictions and additional work requirements:

NO WORK will be allowed north of Green Street from November 14 to January 14 throughout the life of the project.

Work not requiring a lane closure will be allowed 7 days a week except as outlined in Subsection 108.04.1. Additionally, work requiring the presence or services of Department personnel will not be permitted Easter Weekend from 7:00 AM on the preceding Friday through the following Monday at the times outlined below.

Unless otherwise noted herein or specific written permission is allowed by the Engineer, the following conditions apply for work North of Station 65+00 throughout the life of the project.

No Lane Closures allowed for any reason:

- **Daily from 7:00 AM to 11:00 PM Monday through Thursday**
- **Weekends beginning on Friday at 7:00 AM through Sunday at 11:00 PM**

Night work allowed:

- **Daily from 11:00 PM to 7:00 AM the following day Sunday through Thursday**

The above lane closure restrictions apply to SR 145, Barnes Crossing Road, US 45 ramps and all side roads within the project limits.

Unless otherwise noted herein or specific written permission is allowed by the Engineer, the following conditions apply for work South of Station 65+00 throughout the life of the project.

No Lane Closures allowed for any reason:

- **Daily from 7:00 AM to 7:00 PM Monday through Thursday**
- **Weekends beginning on Friday at 7:00 AM through Sunday at 7:00 PM**

Night work allowed:

- **Daily from 7:00 PM to 7:00 AM the following day Sunday through Thursday**

The above lane closure restrictions apply to SR 145 as well as any side roads within the project limits South of Station 65+00.

All night work shall be in accordance with Section 680 – Portable Construction Lighting.

If the lane closure restrictions listed above are violated, no excuses will be accepted by the Department and the Contractor will be charged a fee of **\$500.00** for each full or partial five minute period until the roadway is back in compliance with the lane closure restriction requirement.

For the purposes of this contract, official time shall be the announced time available at the Jackson area telephone number (662) 842-8422.

MISSISSIPPI DEPARTMENT OF TRANSPORTATION

SECTION 904 - NOTICE TO BIDDERS NO. 399

CODE: (SP)

DATE: 09/20/2017

SUBJECT: Plan Correction

PROJECT: HSIP-2839-00(018) / 106953301 & 302 – Lee County

The Bidder's attention is called to the Summary of Quantities in the Contract Plans. Granular Material, Class 3, Group C is shown as being paid for by the Ton. This is in error. The correct method of measurement is CY, LVM.

Bidders are hereby advised that Granular Material, Class 3, Group C will be paid for under pay item no. 304-A002, Granular Material, LVM, Class 3, Group C. A Quantity of **760 CY** for this pay item has been added to the bid items.

MISSISSIPPI DEPARTMENT OF TRANSPORTATION

SECTION 904 - NOTICE TO BIDDERS NO. 400

CODE: (SP)

DATE: 9/20/2017

SUBJECT: Additional Milling Requirements

PROJECT: HSIP-2839-00(018) / 106953301 & 302 – Lee County

Bidders are hereby advised of that unless otherwise noted Milled surfaces are to be covered with surface asphalt within five (5) calendar days of removal. The Contractor will be charged a fee of \$5,000.00 for each full and partial day in which the milled surface is left uncovered after the five (5) calendar days.

Safety upgrades to MS 145 Corridor, known as Federal Aid Project Nos. HSIP-2839-00(018) / 106953301 & 302 in Lee County.

Line No.	Item Code	Adj Code	Quantity	Units	Description [Fixed Unit Price]
Roadway Items					
0010	201-A001		1	Lump Sum	Clearing and Grubbing
0020	202-B004		99	Square Yard	Removal of Asphalt Driveways, All Depths
0030	202-B007		2,125	Square Yard	Removal of Asphalt Pavement, All Depths
0040	202-B052		601	Square Yard	Removal of Concrete Driveways, All Depths
0050	202-B074		40	Square Yard	Removal of Concrete Pavement, Continuous Reinforcement, All Depths
0060	202-B080		325	Square Yard	Removal of Concrete Sidewalk
0070	202-B092		4,184	Linear Feet	Removal of Curb, All Types
0080	202-B136		197	Linear Feet	Removal of Guard Rail
0090	202-B165		13	Each	Removal of Inlets, All Sizes
0100	202-B191		268	Linear Feet	Removal of Pipe, 8" And Above
0110	202-B240		3,900	Linear Feet	Removal of Traffic Stripe
0120	203-EX020	(E)	2,676	Cubic Yard	Borrow Excavation, AH, FME, Class B9
0130	203-G002	(E)	1,904	Cubic Yard	Excess Excavation, LVM, AH
0140	206-A001	(S)	404	Cubic Yard	Structure Excavation
0150	206-B001	(E)	100	Cubic Yard	Select Material for Undercuts, Contractor Furnished, FM
0160	209-A005		9,445	Square Yard	Geotextile Stabilization, Type V, Non-Woven
0170	211-B001	(E)	910	Cubic Yard	Topsoil for Slope Treatment, Contractor Furnished
0180	213-C001		1	Ton	Superphosphate
0190	216-A001		8,190	Square Yard	Solid Sodding
0200	217-A001		2,500	Square Yard	Ditch Liner
0210	219-A001		164	Thousand Gallon	Watering [\$20.00]
0220	220-A001		1	Acre	Insect Pest Control [\$30.00]
0230	221-A001	(S)	9	Cubic Yard	Concrete Paved Ditch
0240	223-A001		2	Acre	Mowing [\$50.00]
0250	225-A001		2	Acre	Grassing
0260	225-B001		1	Ton	Agricultural Limestone
0270	225-C001		3	Ton	Mulch, Vegetative Mulch
0280	226-A001		1	Acre	Temporary Grassing
0290	234-A001		7,738	Linear Feet	Temporary Silt Fence
0300	234-D001		35	Each	Inlet Siltation Guard
0310	235-A001		11	Each	Temporary Erosion Checks
0320	237-A001		1,380	Linear Feet	Wattles, 12"
0330	237-A002		44	Linear Feet	Wattles, 20"

Line No.	Item Code	Adj Code	Quantity	Units	Description [Fixed Unit Price]
0340	245-A001		44	Linear Feet	Silt Dike
0350	246-A001		389	Linear Feet	Sandbags
0360	304-A002	(GY)	760	Cubic Yard	Granular Material, LVM, Class 3, Group C
0370	403-A001	(BA1)	896	Ton	12.5-mm, HT, Asphalt Pavement
0380	403-A004	(BA1)	1,094	Ton	19-mm, HT, Asphalt Pavement
0390	403-A006	(BA1)	1,363	Ton	19-mm, ST, Asphalt Pavement
0400	403-A013	(BA1)	13,288	Ton	9.5-mm, HT, Asphalt Pavement
0410	406-D001		151,687	Square Yard	Fine Milling of Bituminous Pavement, All Depths
0420	407-A001	(A2)	9,592	Gallon	Asphalt for Tack Coat
0430	501-A002	(C)	190	Square Yard	8" Reinforced Cement Concrete Pavement, Broom Finish
0440	503-C010		4,368	Linear Feet	Saw Cut, Full Depth
0450	601-B001	(S)	44	Cubic Yard	Class "B" Structural Concrete, Minor Structures
0460	602-A001	(S)	4,337	Pounds	Reinforcing Steel
0470	603-CA011	(S)	496	Linear Feet	18" Reinforced Concrete Pipe, Class III
0480	603-CA066	(S)	208	Linear Feet	42" Reinforced Concrete Pipe, Class III
0490	603-CB003	(S)	1	Each	18" Reinforced Concrete End Section
0500	603-CB007	(S)	1	Each	42" Reinforced Concrete End Section
0510	603-SB019	(S)	10	Each	18" Branch Connections, Stub into Existing Inlet
0520	604-A001		1,034	Pounds	Castings
0530	604-B001		454	Pounds	Gratings
0540	605-AA001	(S)	980	Square Yard	Geotextile for Subsurface Drainage, Type III
0550	605-W001	(GY)	80	Cubic Yard	Filter Material for Combination Storm Drain and/or Underdrains, Type A, FM
0560	605-W002	(GY)	100	Cubic Yard	Filter Material for Combination Storm Drain and/or Underdrains, Type B, FM
0570	606-B001		938	Linear Feet	Guard Rail, Class A, Type 1
0580	606-D017		2	Each	Guard Rail, Bridge End Section, Type G
0590	606-E005		6	Each	Guard Rail, Terminal End Section, Flared
0600	608-A001	(S)	177	Square Yard	Concrete Sidewalk, Without Reinforcement
0610	609-B002	(S)	175	Linear Feet	Concrete Curb, Header
0620	609-D001	(S)	4,630	Linear Feet	Combination Concrete Curb and Gutter Type 1
0630	609-D003	(S)	135	Linear Feet	Combination Concrete Curb and Gutter Type 2
0640	612-A001		10	Cubic Yard	Flowable Fill, Excavatable
0650	614-B001	(S)	629	Square Yard	Concrete Driveway, With Reinforcement
0660	616-A001	(S)	96	Square Yard	Concrete Median and/or Island Pavement, 10-inch

Line No.	Item Code	Adj Code	Quantity	Units	Description [Fixed Unit Price]
0670	618-A001		1	Lump Sum	Maintenance of Traffic
0680	619-A1004		12	Mile	Temporary Traffic Stripe, Continuous White, Paint
0690	619-A1005		5,971	Linear Feet	Temporary Traffic Stripe, Continuous White, Type 1 Tape
0700	619-A2004		8	Mile	Temporary Traffic Stripe, Continuous Yellow, Paint
0710	619-A2006		4,625	Linear Feet	Temporary Traffic Stripe, Continuous Yellow, Type 1 Tape
0720	619-A3003		3	Mile	Temporary Traffic Stripe, Skip White, Paint
0730	619-A3006		1,171	Linear Feet	Temporary Traffic Stripe, Skip White, Type 1 Tape
0740	619-A4004		2	Mile	Temporary Traffic Stripe, Skip Yellow, Paint
0750	619-A4006		293	Linear Feet	Temporary Traffic Stripe, Skip Yellow, Type 1 Tape
0760	619-A5002		15,259	Linear Feet	Temporary Traffic Stripe, Detail, Paint
0770	619-A5003		578	Linear Feet	Temporary Traffic Stripe, Detail, Type 1 Tape
0780	619-A6003		5,801	Square Feet	Temporary Traffic Stripe, Legend, Paint
0790	619-A6004		2,562	Linear Feet	Temporary Traffic Stripe, Legend, Paint
0800	619-A6005		83	Linear Feet	Temporary Traffic Stripe, Legend, Type 1 Tape
0810	619-D1001		147	Square Feet	Standard Roadside Construction Signs, Less than 10 Square Feet
0820	619-D2001		1,032	Square Feet	Standard Roadside Construction Signs, 10 Square Feet or More
0830	619-E1001		4	Each	Flashing Arrow Panel, Type C
0840	619-E3001		2	Each	Changeable Message Sign
0850	619-G5001		549	Each	Free Standing Plastic Drums
0860	619-G7001		8	Each	Warning Lights, Type "B"
0870	619-H1001		1	Lump Sum	Traffic Signals
0880	620-A001		1	Lump Sum	Mobilization
0890	626-A001		7	Mile	6" Thermoplastic Double Drop Traffic Stripe, Skip White
0900	626-B001		973	Linear Feet	6" Thermoplastic Double Drop Traffic Stripe, Continuous White
0910	626-C002		6	Mile	6" Thermoplastic Double Drop Edge Stripe, Continuous White
0920	626-D001		5	Mile	6" Thermoplastic Double Drop Traffic Stripe, Skip Yellow
0930	626-E001		7	Mile	6" Thermoplastic Double Drop Traffic Stripe, Continuous Yellow
0940	626-G004		31,773	Linear Feet	Thermoplastic Double Drop Detail Stripe, White
0950	626-G005		18,485	Linear Feet	Thermoplastic Double Drop Detail Stripe, Yellow
0960	626-H001		5,591	Square Feet	Thermoplastic Double Drop Legend, White
0970	626-H002		9,866	Linear Feet	Thermoplastic Double Drop Legend, White
0980	627-J001		5	Each	Two-Way Clear Reflective High Performance Raised Markers
0990	627-K001		1,220	Each	Red-Clear Reflective High Performance Raised Markers
1000	627-L001		1,960	Each	Two-Way Yellow Reflective High Performance Raised Markers

Line No.	Item Code	Adj Code	Quantity	Units	Description [Fixed Unit Price]
1010	628-L002		63	Square Feet	High Performance Cold Plastic Legend, White
1020	630-A001		234	Square Feet	Standard Roadside Signs, Sheet Aluminum, 0.080" Thickness
1030	630-A003		915	Square Feet	Standard Roadside Signs, Sheet Aluminum, 0.125" Thickness
1040	630-C002		61	Linear Feet	Steel U-Section Posts, 2.0 lb/ft
1050	630-C003		908	Linear Feet	Steel U-Section Posts, 3.0 lb/ft
1060	630-E004		469	Pounds	Structural Steel Angles & Bars, 7/16" x 2 1/2" Flat Bar
1070	630-F006		50	Each	Delineators, Guard Rail, White
1080	630-F010		129	Each	Delineators, Post Mounted, Double White
1090	630-F011		100	Each	Delineators, Post Mounted, Double Yellow
1100	630-F012		37	Each	Delineators, Post Mounted, Single White
1110	630-F013		32	Each	Delineators, Post Mounted, Single Yellow
1120	630-G004		6	Each	Type 3 Object Markers, OM-3R or OM-3L
1130	630-K001		151	Linear Feet	Welded & Seamless Steel Pipe Posts, 3 1/2"
1140	630-K002		47	Linear Feet	Welded & Seamless Steel Pipe Posts, 3"
1150	630-K003		185	Linear Feet	Welded & Seamless Steel Pipe Posts, 4"
1160	632-A007		3	Each	Solid State Traffic Cabinet Assembly, Type III Cabinet, Type 1 Controller
1170	632-A010		4	Each	Solid State Traffic Cabinet Assembly, Type IV Cabinet, Type 1 Controller
1180	632-C001		7	Each	Modify Existing Traffic Signal Cabinet Assembly
1190	632-D009		4	Each	Solid State Traffic Actuated Controller, Type 1
1200	632-D012		1	Each	Solid State Traffic Actuated Controller, Type M
1210	633-A001		4	Each	Uninterruptable Power Supply
1220	634-A014		1	Each	Traffic Signal Equipment Pole, Type II, 17' Shaft, 30' Arm
1230	634-A015		1	Each	Traffic Signal Equipment Pole, Type II, 17' Shaft, 35' Arm
1240	634-A016		3	Each	Traffic Signal Equipment Pole, Type II, 17' Shaft, 40' Arm
1250	634-A017		5	Each	Traffic Signal Equipment Pole, Type II, 17' Shaft, 45' Arm
1260	634-A021		4	Each	Traffic Signal Equipment Pole, Type II, 17' Shaft, 55' Arm
1270	634-A022		2	Each	Traffic Signal Equipment Pole, Type II, 17' Shaft, 60' Arm
1280	634-A023		1	Each	Traffic Signal Equipment Pole, Type II, 17' Shaft, 65' Arm
1290	634-A026		1	Each	Traffic Signal Equipment Pole, Type II, 17' Shaft, 80' Arm
1300	634-A170		1	Each	Traffic Signal Equipment Pole, Type VI, 8' Shaft
1310	634-A244		3	Each	Traffic Signal Equipment Pole, Type II(L), 30' Shaft, 45' Arm
1320	634-A245		1	Each	Traffic Signal Equipment Pole, Type II(L), 30' Shaft, 50' Arm
1330	634-A246		2	Each	Traffic Signal Equipment Pole, Type II(L), 30' Shaft, 55' Arm

Line No.	Item Code	Adj Code	Quantity	Units	Description [Fixed Unit Price]
1340	634-A247		2	Each	Traffic Signal Equipment Pole, Type II(L), 30' Shaft, 60' Arm
1350	634-A250		1	Each	Traffic Signal Equipment Pole, Type II(L), 30' Shaft, 75' Arm
1360	634-A504		1	Each	Traffic Signal Equipment Pole, Type III(L), 30' Shaft, 35' & 50' Arm
1370	634-A521		1	Each	Traffic Signal Equipment Pole, Type III(L), 30' Shaft, 40' & 55' Arm
1380	634-A527		1	Each	Traffic Signal Equipment Pole, Type III(L), 30' Shaft, 45' & 50' Arm
1390	634-B001		3	Each	Traffic Signal Equipment Pole Shaft Extension, 10-foot, Video Camera Mount
1400	634-C005		86	Cubic Yard	Pole Foundations, Class "B" Concrete
1410	634-E001		2	Each	Camera Pole with Foundation, 50' Pole
1420	634-I001		2	Each	Wood Pole, Class II Height 40'
1430	635-A059		60	Each	Traffic Signal Head, Type 1
1440	635-A061		8	Each	Traffic Signal Head, Type 2
1450	635-A065		28	Each	Traffic Signal Head, Type 2 FYA
1460	635-A070		3	Each	Traffic Signal Head, Type 3
1470	635-A073		6	Each	Traffic Signal Head, Type 4
1480	635-A074		2	Each	Traffic Signal Head, Type 4R
1490	635-A076		2	Each	Traffic Signal Head, Type 6
1500	635-A079		10	Each	Traffic Signal Head, Type 7R
1510	636-B016		135	Linear Feet	Electric Cable, Underground in Conduit, IMSA 20-1, AWG 14, 5 Conductor
1520	636-B018		6,335	Linear Feet	Electric Cable, Underground in Conduit, IMSA 20-1, AWG 14, 8 Conductor
1530	636-B037		3,585	Linear Feet	Electric Cable, Underground in Conduit, THHN, AWG #10, 3 Conductor
1540	636-B060		840	Linear Feet	Electric Cable, Underground in Conduit, THHN, AWG #3, 3 Conductor
1550	636-D021		3,350	Linear Feet	Electric Cable, Aerial Supported in Conduit, IMSA 20-1, AWG 14, 8 Conductor
1560	637-A009		28	Each	Pull Box Enclosure, Type 2, Tier 22
1570	637-A011		8	Each	Pull Box Enclosure, Type 3, Tier 22
1580	637-A013		18	Each	Pull Box Enclosure, Type 4, Tier 22
1590	637-A015		23	Each	Pull Box Enclosure, Type 5, Tier 22
1600	637-C028		780	Linear Feet	Traffic Signal Conduit, Underground, Type 4, 2"
1610	637-C030		1,880	Linear Feet	Traffic Signal Conduit, Underground, Type 4, 3"
1620	637-D003		3,505	Linear Feet	Traffic Signal Conduit, Underground Drilled or Jacked, Rolled Pipe, 3"
1630	637-I001		17,035	Linear Feet	Traffic Signal Conduit Bank, Underground, Drilled or Jacked, Rolled Pipe, 2 @ 2"
1640	637-I002		3,225	Linear Feet	Traffic Signal Conduit Bank, Underground, Drilled or Jacked, Rolled Pipe, 2"
1650	637-I003		2,865	Linear Feet	Traffic Signal Conduit Bank, Underground, Drilled or Jacked, Rolled Pipe, 3 @ 2"

Line No.	Item Code	Adj Code	Quantity	Units	Description [Fixed Unit Price]
1660	639-B001		32	Each	Optical Detector
1670	639-C001		14	Each	Multimode Phase Selector
1680	639-E001		6,055	Linear Feet	Optical Detector Cable
1690	643-A002		21	Each	Video Detection System, 1 Sensor, Type 1
1700	643-E001		30	Each	Multi-Sensor Detection System, 1 Sensor
1710	645-B001		2	Each	Accessible Pedestrian Detection Assembly
1720	647-A001		1	Lump Sum	Removal of Existing Traffic Signal Equipment
1730	653-A002		30	Square Feet	Traffic Sign, Type III
1740	653-B003		329	Square Feet	Street Name Sign, Type III
1750	660-A003		2	Each	Equipment Cabinet, Type B
1760	660-B001		2	Each	Cabinet Modifications
1770	699-A001		1	Lump Sum	Roadway Construction Stakes
1780	815-F002	(S)	242	Ton	Sediment Control Stone
1790	907-416-A001		25,296	Square Yard	High Friction Surface Treatment
1800	907-619-S001		300	Linear Feet	Construction Safety Fence
1810	907-650-A002		15	Each	On Street Video Equipment, Fixed Type
1820	907-650-A003		5	Each	On Street Video Equipment, PTZ Type
1830	907-659-A001		1	Lump Sum	Traffic Management Center Modifications
1840	907-659-C001		1	Lump Sum	Traffic Management Center Modifications - Training
1850	907-661-A004		35,225	Linear Feet	Fiber Optic Cable, 72 SM
1860	907-661-B002		4,800	Linear Feet	Fiber Optic Drop Cable, 12 SM
1870	907-663-A001		15	Each	Network Switch, Type A
1880	907-663-A002		3	Each	Network Switch, Type B
1890	907-663-D001		2,135	Linear Feet	Category 6 Cable, Installed in Conduit
1900	907-666-A001		3	Each	Bluetooth Detection System, Type A
1910	907-666-B001		1	Each	Bluetooth Detection System Server
1920	907-666-C001		1	Each	Bluetooth Detection System Server Licensing
ALTERNATE GROUP AA NUMBER 1					
1930	304-H001	(GY)	2,338	Cubic Yard	3/4" and Down Crushed Stone Base, LVM
ALTERNATE GROUP AA NUMBER 2					
1940	304-H002	(GY)	2,338	Cubic Yard	Size 610 Crushed Stone Base, LVM
ALTERNATE GROUP AA NUMBER 3					
1950	304-H003	(GY)	2,338	Cubic Yard	Size 825B Crushed Stone Base, LVM
ALTERNATE GROUP BB NUMBER 1					

Line No.	Item Code	Adj Code	Quantity	Units	Description [Fixed Unit Price]
1960	907-624-A002		1,257	Linear Feet	6" Inverted Profile Thermoplastic Traffic Stripe, Skip White
1970	907-624-B002		9,054	Linear Feet	6" Inverted Profile Thermoplastic Traffic Stripe, Continuous White
1980	907-624-C001		754	Linear Feet	6" Inverted Profile Thermoplastic Traffic Stripe, Skip Yellow
1990	907-624-D002		7,646	Linear Feet	6" Inverted Profile Thermoplastic Traffic Stripe, Continuous Yellow
2000	907-624-E001		1,986	Linear Feet	Inverted Profile Thermoplastic Detail Traffic Stripe, White
2010	907-624-E003		1,045	Linear Feet	Inverted Profile Thermoplastic Detail Traffic Stripe, Yellow
ALTERNATE GROUP BB NUMBER 2					
2020	628-G001		1,257	Linear Feet	6" High Performance Cold Plastic Traffic Stripe, Skip White
2030	628-H001		9,054	Linear Feet	6" High Performance Cold Plastic Traffic Stripe, Continuous White
2040	628-I002		754	Linear Feet	6" High Performance Cold Plastic Traffic Stripe, Skip Yellow
2050	628-J001		7,646	Linear Feet	6" High Performance Cold Plastic Traffic Stripe, Continuous Yellow
2060	628-K001		1,986	Linear Feet	High Performance Cold Plastic Detail Stripe, White
2070	628-K002		1,045	Linear Feet	High Performance Cold Plastic Detail Stripe, Yellow

STATE OF MISSISSIPPI

MISSISSIPPI DEPARTMENT OF TRANSPORTATION

PLAN AND PROFILE OF PROPOSED STATE HIGHWAY FEDERAL AID PROJECT NO. HSIP-2839-00(018)

SAFETY IMPROVEMENTS ALONG S.R. 145 FROM S.R. 145 AND S.R. 178 INTERCHANGE TO BEECH SPRINGS RD, AND ALONG BARNES CROSSING RD FROM 0.166 MILES WEST OF S.R. 145 TO CROSS CREEK DR.

LEE COUNTY

FMS. CONST. NO. 106953/301000
 FMS. CONST. NO. 106953/302000
BEGIN CONSTRUCTION

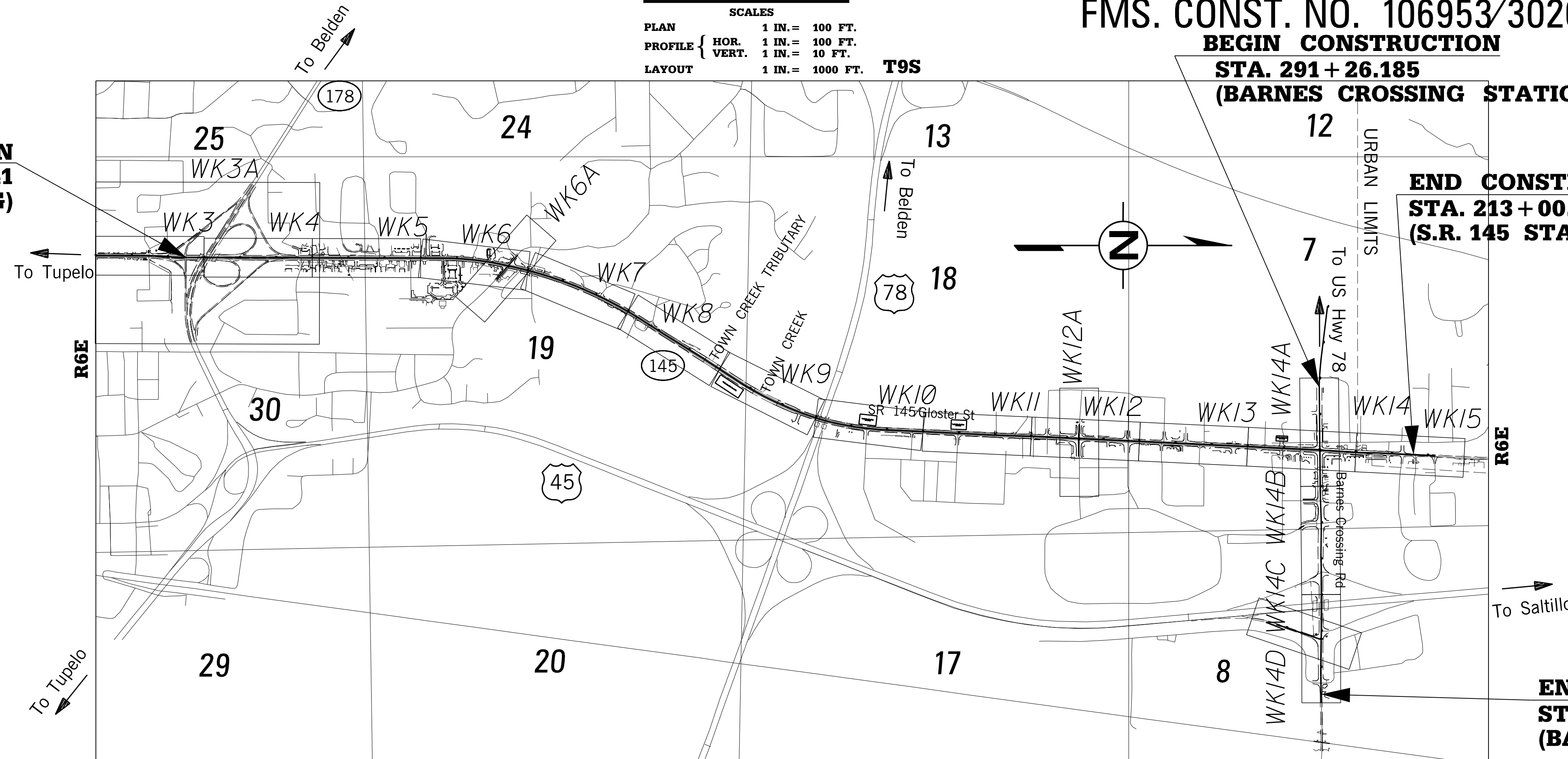
SCALES

PLAN	1 IN. = 100 FT.
PROFILE	HOR. 1 IN. = 100 FT.
	VERT. 1 IN. = 10 FT.
LAYOUT	1 IN. = 1000 FT.

STA. 291 + 26.185 (BARNES CROSSING STATIONING)

END CONSTRUCTION STA. 213 + 00.000 (S.R. 145 STATIONING)

END CONSTRUCTION STA. 333 + 69.345 (BARNES CROSSING STATIONING)



GENERAL INDEX

INCLUDED THIS PROJECT	BEGIN WITH SHEET
<input checked="" type="checkbox"/> ROADWAY	1
<input checked="" type="checkbox"/> PERMANENT SIGNS	1001
<input checked="" type="checkbox"/> TRAFFIC SIGNALS	2001
<input checked="" type="checkbox"/> ITS COMPONENTS	3001
<input type="checkbox"/> LIGHTING	4001
<input type="checkbox"/> (RESERVED)	5001
<input checked="" type="checkbox"/> ROADWAY STANDARD DWGS	6001
<input type="checkbox"/> BOX CULVERT STD. DRAWINGS (LRFD)	7001
<input type="checkbox"/> BOX CULVERT STD. DRAWINGS (STD. SPEC.)	7501
<input type="checkbox"/> BRIDGE	8001
<input checked="" type="checkbox"/> CROSS SECTIONS	9001

BRIDGE STRUCTURES REQ'D.

NONE

BEGIN CONSTRUCTION STA. 34 + 62.841 (S.R. 145 STATIONING)

BOX BRIDGES REQ'D.

NONE

CONVENTIONAL SYMBOLS

COUNTY LINE	-----
TOWN CORPORATION LINE	-----
SECTION LINE	-----
EXISTING ROAD OR TRAVELED WAY	-----
PROPOSED ROAD OR TRAVELED WAY	-----
RAILROAD	-----
SURVEY LINE	-----
BRIDGES	-----

EQUATIONS

NONE

LENGTH DATA

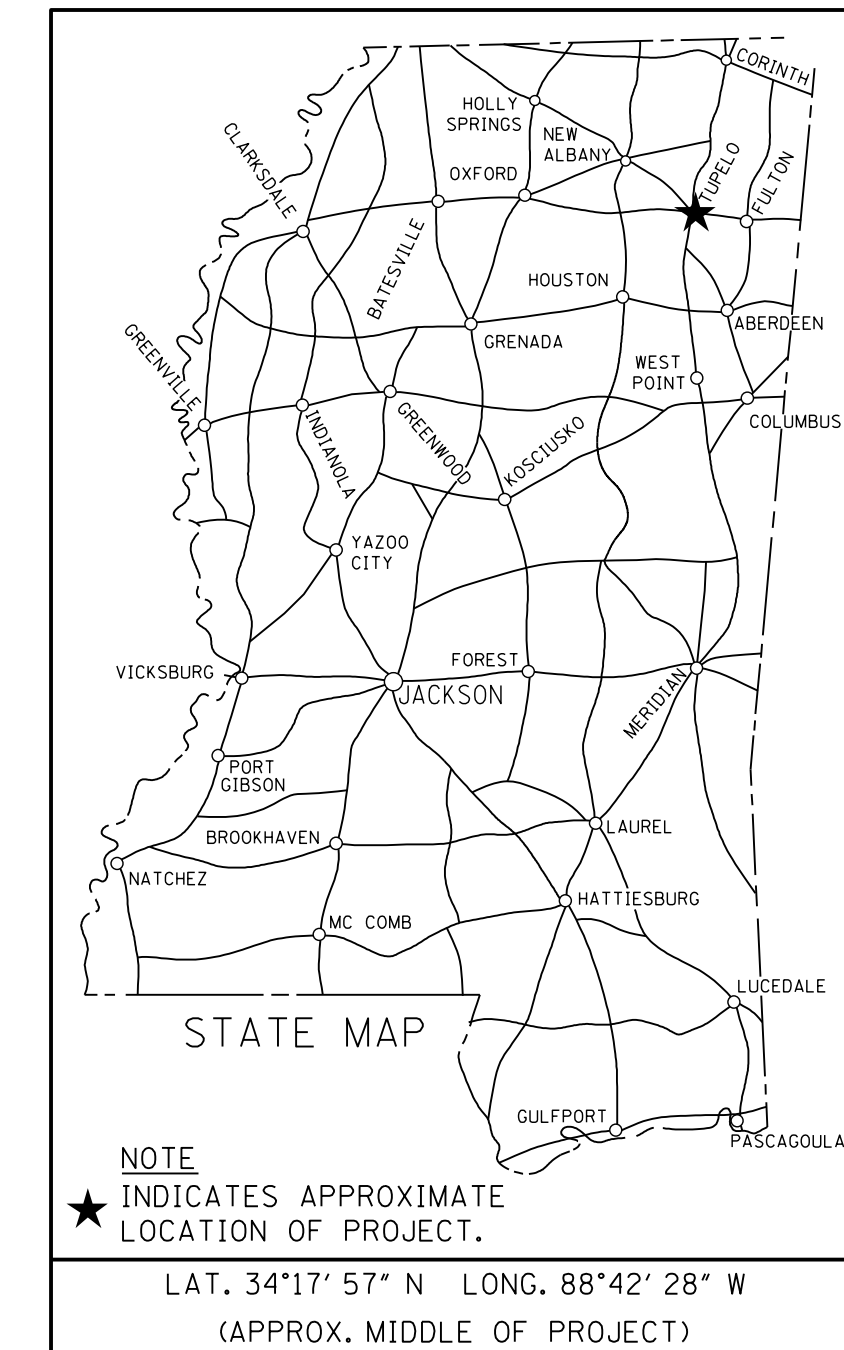
LENGTH OF ROADWAY	21,386	FT.	4.050	MI.
LENGTH OF BRIDGES	694	FT.	0.131	MI.
LENGTH OF PROJECT (NET)			4.181	MI.
LENGTH OF EXCEPTIONS	0	FT.	0	MI.
LENGTH OF PROJECT (GROSS)			4.181	MI.

EXCEPTIONS

NONE

DATE: 09/12/2017	DATE: 06/07/2017 (SIGNALS ONLY)	DATE: 06/07/2017 (ITS ONLY)
------------------	---------------------------------	-----------------------------

STATE	PROJECT NUMBER	SHEET NO.
MISSISSIPPI	HSIP-2839-00(018)	1



DESIGN CONTROL

45 MPH = V (SPEED DESIGN)

ADT (2018) = 23000 ; ADT (2038) = 29000
 DHV = 3200 ; D = 60 % T = 3 %

PERMITS ACQUIRED BY MDOT

WETLANDS AND WATERS PERMITS (NECESSARY FOR ULTIMATE IMPROVEMENTS ONLY):

	WATERS	WETLANDS
NATIONWIDE #14	<input type="checkbox"/>	<input type="checkbox"/>
NATIONWIDE (OTHER)*	<input type="checkbox"/>	<input type="checkbox"/>
GENERAL*	<input type="checkbox"/>	<input type="checkbox"/>
INDIVIDUAL (404)*	<input type="checkbox"/>	<input type="checkbox"/>

* ACQUISITION OF PERMITS FOR TEMPORARY IMPACTS DURING CONSTRUCTION ARE THE RESPONSIBILITY OF THE CONTRACTOR

STORMWATER PERMIT

Y REQUIRED, CNOI SUBMITTED BY MDOT (DISTURBED AREA = 5 ACRES)
 S REQUIRED, CNOI TO BE SUBMITTED BY CONTRACTOR (1 TO 4.99 ACRES)
 N NO STORMWATER PERMIT REQUIRED (<1 ACRE)

APPROVED BY: _____

P S & E DATE: 6/7/2017

APPROVED: _____

DEPUTY EXECUTIVE DIRECTOR / CHIEF ENGINEER

EXECUTIVE DIRECTOR

MDOT
 MISSISSIPPI DEPARTMENT OF TRANSPORTATION

ADDENDUM

STATE	PROJECT NO.
MISS.	HSIP-2839-00(018)

DESCRIPTION OF SHEET

WKG. NO. SH. NO.

ROADWAY			
TITLE SHEET (1)		TITLE	1
DETAILED INDEX AND GENERAL NOTES (4)			
DETAILED INDEX		DI-1	2
DETAILED INDEX		DI-2	3
DETAILED INDEX		DI-3	4
GENERAL NOTES		GN-1	5
TYPICAL SECTIONS (7)			
TYPICAL SECTION - SR 145 / GLOSTER ST		TS-1	6
TYPICAL SECTION - SR 145 / GLOSTER ST		TS-2	7
TYPICAL SECTION - SR 145 / GLOSTER ST & LAKESHIRE DR		TS-3	8
TYPICAL SECTION - SR 145 / GLOSTER ST		TS-4	9
TYPICAL SECTION - MISSISSIPPI DR		TS-5	10
TYPICAL SECTION - BARNES CROSSING RD		TS-6	11
TYPICAL SECTION - BARNES CROSSING RD & U.S. 45 S.E. RAMP		TS-7	12
QUANTITY SHEETS (22)			
SUMMARY OF QUANTITIES		SQ-1	13
SUMMARY OF QUANTITIES		SQ-2	14
SUMMARY OF QUANTITIES		SQ-3	15
SUMMARY OF QUANTITIES		SQ-4	16
SUMMARY OF QUANTITIES		SQ-5	17
SUMMARY OF QUANTITIES		SQ-6	18
ESTIMATED QUANTITIES - REMOVAL ITEMS		EQ-1	19
ESTIMATED QUANTITIES - EARTHWORKS		EQ-2	20
ESTIMATED QUANTITIES - EROSION CONTROL		EQ-3	21
ESTIMATED QUANTITIES - DRAINAGE STRUCTURES		EQ-4	22
ESTIMATED QUANTITIES - JUNCTION BOXES		EQ-5	23
ESTIMATED QUANTITIES - COMBINATION CURB & GUTTER		EQ-6	24
ESTIMATED QUANTITIES - GUARD RAIL & DELINEATORS		EQ-7	25
ESTIMATED QUANTITIES - DRIVEWAYS		EQ-8	26
ESTIMATED QUANTITIES - PAVEMENT MARKINGS		EQ-9	27
ESTIMATED QUANTITIES - STANDARD ROADSIDE ASSEMBLIES		EQ-10	28
ESTIMATED QUANTITIES - STANDARD ROADSIDE ASSEMBLIES (CONTINUED)		EQ-11	29
ESTIMATED QUANTITIES - STANDARD ROADSIDE & DIRECTIONAL SIGNS		EQ-12	30
ESTIMATED QUANTITIES - TRAFFIC CONTROL ITEMS		EQ-13	31
ESTIMATED QUANTITIES - TRAFFIC CONTROL SIGNS		EQ-14	32
ESTIMATED QUANTITIES - TRAFFIC SIGNALS		TSQ-1	33
ESTIMATED QUANTITIES - ITS		EQ-ITS	34
PLAN & PROFILE SHEETS (20)			
SR 145 STA. 25+00.00 TO STA. 40+00.00		WK-3	35
SR 145 AT SR 178 LIMITS OF HIGH FRICTION SURFACE TREATMENT		WK-3A	36
SR 145 STA. 40+00.00 TO STA. 55+00.00		WK-4	37
SR 145 STA. 55+00.00 TO STA. 70+00.00		WK-5	38
SR 145 STA. 70+00.00 TO STA. 85+00.00		WK-6	39
LAKESHIRE DR & SPICER DR		WK-6A	40
SR 145 STA. 85+00.00 TO STA. 100+00.00		WK-7	41
SR 145 STA. 100+00.00 TO STA. 115+00.00		WK-8	42
SR 145 STA. 115+00.00 TO STA. 130+00.00		WK-9	43
SR 145 STA. 130+00.00 TO STA. 145+00.00		WK-10	44
SR 145 STA. 145+00.00 TO STA. 160+00.00		WK-11	45
SR 145 STA. 160+00.00 TO STA. 175+00.00		WK-12	46
MISSISSIPPI DR		WK-12A	47
SR 145 STA. 175+00.00 TO STA. 190+00.00		WK-13	48
SR 145 STA. 190+00.00 TO STA. 205+00.00		WK-14	49
BARNES CROSSING ROAD STA. 291+26.18 TO STA. 305+00.00		WK-14A	50
BARNES CROSSING ROAD STA. 305+00.00 TO STA. 320+00.00		WK-14B	51
BARNES CROSSING ROAD STA. 320+00.00 TO STA. 335+00.00		WK-14C	52
US 45 S.E. RAMP		WK-14D	53
SR 145 STA. 205+00.00 TO E.O.P		WK-15	54


DESCRIPTION OF SHEET

WKG. NO. SH. NO.

EROSION CONTROL SHEETS (20)			
EROSION CONTROL - SR 145 STA. 25+00.00 TO STA. 40+00.00		ECP-3	55
SR 145 AT SR 178 LIMITS OF HIGH FRICTION SURFACE TREATMENT		ECP-3A	56
EROSION CONTROL - SR 145 STA. 40+00.00 TO STA. 55+00.00		ECP-4	57
EROSION CONTROL - SR 145 STA. 55+00.00 TO STA. 70+00.00		ECP-5	58
EROSION CONTROL - SR 145 STA. 70+00.00 TO STA. 85+00.00		ECP-6	59
EROSION CONTROL - LAKESHIRE DR & SPICER DR		ECP-6A	60
EROSION CONTROL - SR 145 STA. 85+00.00 TO STA. 100+00.00		ECP-7	61
EROSION CONTROL - SR 145 STA. 100+00.00 TO STA. 115+00.00		ECP-8	62
EROSION CONTROL - SR 145 STA. 115+00.00 TO STA. 130+00.00		ECP-9	63
EROSION CONTROL - SR 145 STA. 130+00.00 TO STA. 145+00.00		ECP-10	64
EROSION CONTROL - SR 145 STA. 145+00.00 TO STA. 160+00.00		ECP-11	65
EROSION CONTROL - SR 145 STA. 160+00.00 TO STA. 175+00.00		ECP-12	66
EROSION CONTROL - MISSISSIPPI DR		ECP-12A	67
EROSION CONTROL - SR 145 STA. 175+00.00 TO STA. 190+00.00		ECP-13	68
EROSION CONTROL - SR 145 STA. 190+00.00 TO STA. 205+00.00		ECP-14	69
EROSION CONTROL - BARNES CROSSING DR STA. 291+26.18 TO STA. 305+00.00		ECP-14A	70
EROSION CONTROL - BARNES CROSSING DR STA. 305+00.00 TO STA. 320+00.00		ECP-14B	71
EROSION CONTROL - BARNES CROSSING DR STA. 320+00.00 TO STA. 335+00.00		ECP-14C	72
EROSION CONTROL - US 45 S.E. RAMP		ECP-14D	73
EROSION CONTROL - SR 145 STA. 205+00.00 TO E.O.P		ECP-15	74
CONSTRUCTION SIGNING SHEET (1)		CS-1	75
TRAFFIC CONTROL SHEETS (16)			
TRAFFIC CONTROL CONSTRUCTION PHASING NOTES		TC-GN1	76
TRAFFIC CONTROL GENERAL NOTES		TC-GN2	77
TRAFFIC CONTROL PHASE 1 CONSTRUCTION TYPICAL SECTIONS		TC-TS1	78
TRAFFIC CONTROL PHASE 2 CONSTRUCTION TYPICAL SECTIONS		TC-TS2	79
PHASE 1 SR 145 STA. 25+00.00 TO STA. 56+00.00		TC-1	80
PHASE 1 SR 145 STA. 63+00.00 TO STA. 96+00.00		TC-2	81
PHASE 1 SR 145 STA. 124+00.00 TO STA. 156+00.00		TC-3	82
PHASE 1 SR 145 STA. 159+00.00 TO STA. 197+00.00		TC-4	83
PHASE 1 SR 145 STA. 282+00.00 TO STA. 313+00.00		TC-5	84
PHASE 1 SR 145 STA. 313+00.00 TO STA. 335+00.00		TC-6	85
PHASE 2 SR 145 STA. 29+00.00 TO STA. 58+00.00		TC-7	86
PHASE 2 SR 145 STA. 65+00.00 TO STA. 102+00.00		TC-8	87
PHASE 2 SR 145 STA. 150+00.00 TO STA. 197+00.00		TC-9	88
PHASE 2 SR 145 STA. 282+00.00 TO STA. 313+00.00		TC-10	89
PHASE 2 SR 145 STA. 313+00.00 TO STA. 335+00.00		TC-11	90
TEMPORARY SIGNAL LAYOUT DETAILS TRAFFIC CONTROL PHASE 1		TC-SIG	91
FORM GRADES (11)			
SR 145/GLOSTER ST AT COMMONWEALTH		FG-1	92
SR 145/GLOSTER ST AT MEL DR		FG-2	93
SR 145/GLOSTER ST AT MISSISSIPPI DR		FG-3	94
SR 145/GLOSTER ST AT KOHLS		FG-4	95
SR 145/GLOSTER ST AT HARMONY LN		FG-5	96
BARNES CROSSING RD AT SR 145/GLOSTER ST		FG-6	97
BARNES CROSSING RD AT MELODY LN		FG-7	98
BARNES CROSSING RD AT MALL DR		FG-8	99
BARNES CROSSING RD AT U.S. 45 SW RAMP		FG-9	100
BARNES CROSSING RD AT U.S. 45 SE RAMP		FG-10	101
U.S. 45 SE RAMP AT BARNES CROSSING RD		FG-11	102

DATE:09/12/2017

PS & E PLANS-DATE 6/7/2017		
FMS CON. *106953/301000		
REVISIONS		
DATE	SHEET NO.	BY
6/23/17	2, 16, 17, 18, 29, 30,	MRW
	33, 121, 1006, 1007,	
	2009	
7/18/17	2, 52, 72, 117	MRW
8/16/17	2,15,27,50,51,70,71	MRW
9/12/17	1, 2, 5, 13, 14, 76	MRW

MISSISSIPPI DEPARTMENT OF TRANSPORTATION	
DETAILED INDEX	
	
PROJ. NO. HSIP-2839-00(018)	WORKING NUMBER
LEE COUNTY	DI-1
FILENAME: DI.DGN	SHEET NUMBER
DESIGN TEAM	2

9/11/2017 2:10 PM DI.DGN

ADDENDUM

GENERAL NOTES

- (1) THE LOCATION AND SPACING OF SIGNS, SHOWN ON THE TRAFFIC CONTROL PLANS, ARE APPROXIMATE AND MAY BE ADJUSTED AS NECESSARY TO FIT FIELD CONDITIONS.
- (2) ALL TRAFFIC CONTROL DEVICES ON THIS PROJECT SHALL COMPLY WITH PART VI OF THE MUTCD (LATEST EDITION).
- (3) ALL PLASTIC DRUMS SHALL HAVE A BALLASTING COLLAR MADE FROM RECYCLED TRUCK TIRES OR OTHER SUITABLE MATERIAL.
- (4) 25% SHRINKAGE FACTOR USED IN THE EARTHWORK CALCULATIONS IS FOR DESIGN ESTIMATING PURPOSES ONLY.
- (5) THE CONTRACTOR SHALL BE RESPONSIBLE FOR PROTECTING EXISTING STRUCTURES SUCH AS, BUT NOT LIMITED TO, PIPES, INLETS, APRONS, AND BRIDGES FROM DAMAGE WHICH MIGHT OCCUR DURING CONSTRUCTION. THE CONTRACTOR SHALL REPLACE OR REPAIR, AS DIRECTED BY THE ENGINEER, ANY STRUCTURES DAMAGED DURING THE LIFE OF THE CONTRACT. NO PAYMENT WILL BE MADE FOR REPLACEMENT OR REPAIR OF DAMAGED ITEMS.
- (6) ALL PIPE JOINTS ARE TO BE WRAPPED IN 24-INCH WIDE TYPE V GEOTEXTILE FABRIC. ALL PICKUP HOLES SHALL BE PLUGGED AND COVERED WITH TYPE V GEOTEXTILE FABRIC, THE COST OF WHICH SHALL BE ABSORBED IN OTHER BID ITEMS.
- (7) VOIDS CREATED BY THE REMOVAL OF, BUT NOT LIMITED TO, POSTS, CONCRETE ANCHORS, AND FOOTINGS SHALL BE BACKFILLED AND TAMPED IN ACCORDANCE WITH SECTION 203 OF THE MISSISSIPPI STANDARD SPECIFICATIONS FOR ROAD AND BRIDGE CONSTRUCTION, THE COST OF WHICH WILL BE ABSORBED IN OTHER ITEMS BID.
- (8) UTILITIES ON THE DRAWINGS ARE SHOWN IN THEIR ORIGINAL LOCATION BASED UPON THE BEST INFORMATION AVAILABLE TO THE ENGINEER. UTILITIES THAT WERE FOUND TO BE IN CONFLICT WITH CONSTRUCTION HAVE BEEN RELOCATED. PERMITS ARE ON FILE WITH THE DEPARTMENT SHOWING THE APPROXIMATE LOCATION OF UTILITIES RELOCATED WITHIN THE RIGHT-OF-WAY. THE ENGINEER CAN NOT AND DOES NOT WARRANT THAT THIS INFORMATION IS COMPLETE OR ACCURATE. THE CONTRACTOR MUST COORDINATE DIRECTLY WITH THE INVOLVED UTILITY OWNERS TO HAVE UNDERGROUND UTILITY LINES FIELD LOCATED IN ADVANCE OF CONSTRUCTION.
- (9) WORK ON STRUCTURES FOR THIS PROJECT REQUIRES EXCAVATION IN THE IMMEDIATE VICINITY OF TRAFFIC AND ADJACENT PROPERTIES. THEREFORE, THE RISK OF A FAILURE OCCURRING DURING EXCAVATION REQUIRES THAT EXTREME CAUTION BE EXERCISED. THE CONTRACTOR SHALL BE RESPONSIBLE FOR PLACING WHAT BRACING, SHORING, OR GROUND SUPPORT SYSTEM THAT IS DEEMED NECESSARY TO PREVENT A FAILURE AND PROTECT THE PERSONS WORKING NEAR THE EXCAVATION, THE PUBLIC THAT MAY BE ABOVE THE EXCAVATION OR ANY STRUCTURES ADJACENT TO THE EXCAVATION. ALL COSTS FOR DESIGNING, DRAWING, AND CONSTRUCTING THE FACILITY SHALL BE INCLUDED IN THE PRICE BID FOR CONTRACT ITEMS.
- (10) SOME WORK IS REQUIRED OUTSIDE THE PROJECT LIMITS. NO ADDITIONAL COMPENSATION WILL BE MADE FOR SUCH WORK EXCEPT AS PROVIDED BY SPECIFIC PAY ITEMS INCLUDED IN THE PLANS.
- (11) WIRE FENCE BACKING WILL BE REQUIRED FOR ALL SILT FENCE. (SEE WK. NO. ECD-3)
- (12) LIST OF PUBLIC UTILITIES
 - A. MISSISSIPPI VALLEY GAS COMPANY
 - B. BELLSOUTH TELECOMMUNICATIONS, INC.
 - C. THE NORTH LEE COUNTY WATER ASSOCIATION, INC.
 - D. CITY OF TUPELO - TUPELO WATER AND LIGHT
 - E. TOMBIGBEE WATER AND LIGHT
- (13) ALL POST LENGTHS FOR SIGNS SHALL MEET REQUIREMENTS PER STANDARD DRAWING SN-4 AND SHALL BE VERIFIED IN THE FIELD PRIOR TO FABRICATION.
- (14) FLUORESCENT ORANGE SHEETING SHALL BE USED ON ALL CONSTRUCTION AND TRAFFIC CONTROL SIGNS EXCEPT FOR THOSE DESIGNATED ON THE PLANS TO BE BLACK LEGEND AND BORDER ON WHITE BACKGROUND.
- (15) SMALL AMOUNTS OF EXCAVATION MAY BE NECESSARY AT SOME OF THE SITES. THIS MATERIAL MAY BE USED AS E.S.F.E. MATERIAL AND WILL BE PAID FOR BORROW. NO E.S.F.E. MATERIAL SHALL BE REMOVED FROM THE PROJECT WITHOUT THE APPROVAL OF THE ENGINEER.
- (16) VEGETATIVE MATERIAL WILL BE REMOVED PRIOR TO PLACEMENT OF GRANULAR MATERIAL. THE COST OF WHICH SHALL BE ABSORBED IN OTHER BID ITEMS.
- (17) REMOVAL OF SOIL CEMENT AND SBST SHOULDERS SHALL BE PAID FOR AS ASPHALT PAVEMENT REMOVAL.
- (18) THE CONTRACTOR SHALL COORDINATE WITH THE CONTRACTOR FROM ADJACENT PROJECT(S) IN IMPLEMENTING THE TRAFFIC CONTROL PLAN AS DIRECTED BY THE ENGINEER. ALL CONFLICTING SIGNS SHALL BE COVERED OR REMOVED AS DIRECTED BY THE ENGINEER.
- (19) THE CONTRACTOR SHALL COVER ANY TEMPORARY TRAFFIC CONTROL SIGNS SHOWN IN THE TRAFFIC CONTROL PLAN THAT DO NOT APPLY TO THE CURRENT PHASE
- (20) EXISTING ROADWAY SIGNS THAT ARE IN CONFLICT WITH CONSTRUCTION OF THIS PROJECT SHALL BE REMOVED AND RELOCATED BY THE CONTRACTOR AS DIRECTED BY THE ENGINEER, THE COST OF WHICH SHALL BE ABSORBED IN OTHER ITEMS BID.

GENERAL NOTES

- (21) REMOVAL OF RAISED PAVEMENT MARKERS THAT ARE IN CONFLICT WITH REQUIRED CONSTRUCTION IS NOT CONSIDERED A SEPARATE PAY ITEM. COST TO BE ABSORBED IN OTHER ITEMS BID.
- (22) REMOVAL OF OBJECT MARKERS IS NOT CONSIDERED A SEPARATE PAY ITEM, AND SHALL BE ABSORBED IN OTHER ITEMS BID.
- (23) WHERE MILLING IS REQUIRED, THE CONTRACTOR SHALL PROVIDE OUTLETS IN THE EXISTING SHOULDERS AT SUFFICIENT INTERVALS TO PREVENT POOLING OR STANDING WATER ON THE MILLED SURFACE, THE COST OF WHICH SHALL BE ABSORBED IN OTHER ITEMS BID.
- (24) THE EROSION CONTROL DEVICES REFERENCED IN THESE PLANS ARE A MINIMUM REQUIREMENT. IT IS THE RESPONSIBILITY OF THE CONTRACTOR TO ENSURE THAT SILT DOES NOT LEAVE THE RIGHT OF WAY OR CONTAMINATE WATERS OF THE U. S. DURING CONSTRUCTION. THE CONTRACTOR SHALL SUBMIT AN EROSION CONTROL PLAN PRIOR TO COMMENCEMENT OF WORK AND MAINTAIN THE PLAN DURING CONSTRUCTION. ANY ADDITIONAL SILT BASINS NOT SHOWN IN THE PLANS SHALL BE INCLUDED IN THE CONTRACTOR'S EROSION CONTROL PLAN PRIOR TO SUBMITTING FOR APPROVAL.
- (25) PRIOR TO EARTHWORK OPERATIONS, THE EXISTING TOP 4" TOPSOIL IS TO BE STRIPPED AND STOCKPILED. AFTER THE GRADING OPERATIONS ARE COMPLETED, SAID TOPSOIL SHALL BE PLACED ON ALL AREAS THAT ARE NOT TO BE PAVED OR OTHERWISE PROTECTED, IN ACCORDANCE WITH SECTION 211 OF THE SPECIFICATIONS, OR THE VEGETATION SCHEDULE (SEE WK. SH. VS-1). EXISTING TOPSOIL AND ALL COSTS ASSOCIATED WITH STRIPPING, HAULING, STOCKPILING, AND PLACEMENT OF THE EXISTING TOPSOIL IS TO BE ABSORBED IN OTHER EARTHWORK ITEMS.
- (26) THE CONTRACTOR IS RESPONSIBLE FOR FIELD-VERIFICATION OF EXISTING GRADES AND MAKING ADJUSTMENTS AS NECESSARY WITH THE APPROVAL OF THE PROJECT ENGINEER.
- (27) TEMPORARY STRIPING SHALL CONFORM TO FINISHED STRIPE SPECIFICATIONS FOR ALIGNMENT, NEATNESS, AND STRAIGHTNESS.
- (28) ALL ITEMS OF WORK ASSOCIATED WITH THE INSTALLATION OF A CONSTRUCTION ENTRANCE SHALL BE ABSORBED IN OTHER ITEMS OF WORK.
- (29) ERECTION DATES ARE TO BE LEGIBLY WRITTEN IN BOLD, BLACK MARKINGS ON THE BACK OF ALL PERMANENT SIGNS WITH A PERMANENT MARKING STICK THAT IS WATERPROOF, FADE RESISTANT, AND MARKS ON WET OR DRY SURFACES.
- (30) IF COLORS ARE USED ON PLAN/PROFILE SHEETS, THEY ARE INTENDED TO VISUALLY EASE THE LOCATION OF ELEMENTS FOR USERS OF THESE DRAWINGS. ALTHOUGH THE INTENT IS TO CATEGORIZE EVERYTHING AS EITHER EXISTING OR PROPOSED, IT IS THE END USER'S RESPONSIBILITY TO ENSURE ALL ELEMENTS ARE INTERPRETED CORRECTLY REGARDLESS OF COLOR.
- (31) ALL ADDENDA TO THESE PLANS WILL BE POSTED TO WWW.MDOT.MS.GOV UNDER THE PROPOSAL ADDENDA COLUMN. BIDDERS ARE ADVISED THAT HARD COPIES OF ANY ADDENDA FOR THIS PROJECT WILL NOT BE MAILED. IT IS THE BIDDER'S RESPONSIBILITY TO CHECK AND SEE IF ANY ADDENDA HAVE BEEN POSTED FOR THIS PROJECT.
- (32) CURB AND GUTTER VERTICAL DIMENSIONS SHOWN IN THE DETAIL DRAWINGS ARE FOR A CURB IN THE "CATCH" CONFIGURATION AND SHALL BE CONSIDERED TO BE MINIMUM DIMENSIONS. THE DIMENSIONS MAY BE MODIFIED AS NECESSARY FOR "SPILL" CURB AND GUTTER, BUT SHALL NOT BE LESS THAN THE MINIMUM SHOWN.
- (33) THE COST FOR REMOVAL OF ALL HEADWALLS AND WINGWALLS (PIPES, BOX CULVERTS, BOX BRIDGES) SHALL BE ABSORBED IN OTHER ITEMS BID.
- (34) THE CONTRACTOR SHALL BE RESPONSIBLE FOR MAINTAINING AND RELOCATING MAIL BOXES AS NECESSARY TO MAINTAIN CONTINUOUS MAIL SERVICE THROUGHOUT THE LIFE OF THE PROJECT, THE COST OF WHICH SHALL BE ABSORBED IN OTHER ITEMS BID.
- (35) BIDDERS BE ADVISED, THIS SET OF PLANS IS IMPLEMENTING PAY ITEMS FROM THE 2017 STANDARD DRAWINGS AND MISSISSIPPI STANDARD SPECIFICATIONS FOR ROAD AND BRIDGE CONSTRUCTION AND IS UTILIZING THE CURRENT 1998 VERSION OF THE ROADWAY DESIGN STANDARD DRAWINGS. IF ANY DISCREPANCIES ARE FOUND BETWEEN THE REFERENCE TO PAY ITEMS IN THE 1998 STANDARD DRAWINGS AND THE 2017 PAY ITEMS, THEN IT WILL BE UNDERSTOOD THAT THE 2017 PAY ITEMS WILL BE USED AND PAID FOR AS IS LISTED IN THE SUMMARY OF QUANTITIES.
- ▲ (36) ANY REFERENCE TO PROJECT NUMBER 106953/301000 IS TO BE UNDERSTOOD THAT 106953/301000 AND 106953/302000 ARE THE CORRECT PROJECT NUMBERS.

STATE	PROJECT NO.
MISS.	HSIP-2839-00(018)

9/11/2017 2:10 PM GN-1.DGN MISSISSIPPI DEPARTMENT OF TRANSPORTATION

		MISSISSIPPI DEPARTMENT OF TRANSPORTATION GENERAL NOTES	
		PROJ. NO. HSIP-2839-00(018) LEE COUNTY	
		WORKING NUMBER GN-1	
		SHEET NUMBER 5	
		FILENAME: GN-1.DGN	
		DESIGN TEAM GS&P CHECKED DATE	
		DATE	BY
		ADDED GENERAL NOTE	REVISION
		DATE	DATE

ADDENDUM


STATE	PROJECT NO.
MISS	HSIP-2839-00(018)

SUMMARY OF QUANTITIES (SHEET 1)

PAY ITEM NO.	PAY ITEM	UNIT	LEE : 106953-301000	
			Prelim	Final
*** REMOVAL ITEMS ***				
201-A001	Clearing and Grubbing	LS	1	
202-B004	Removal of Asphalt Driveways, All Depths	SY	99	
202-B007	Removal of Asphalt Pavement, All Depths	SY	2,125	
202-B052	Removal of Concrete Driveways, All Depths	SY	601	
202-B074	Removal of Concrete Pavement, Continuous Reinforcement, All Depths	SY	40	⑨ △
202-B080	Removal of Concrete Sidewalk	SY	325	
202-B092	Removal of Curb, All Types	LF	4,184	
202-B136	Removal of Guard Rail	LF	197	⑧
202-B165	Removal of Inlets, All Sizes	EA	13	⑥
202-B191	Removal of Pipe, 8" And Above	LF	268	
202-B240	Removal of Traffic Stripe	LF	3,900	⑦
*** EARTHWORK ITEMS ***				
203-EX020	Borrow Excavation, AH, FME, Class B9	CY	2,676	
203-G002	Excess Excavation, LVM, AH	CY	1,904	
206-A001	Structure Excavation	CY	404	
206-B001	Select Material for Undercuts, Contractor Furnished, FM	CY	100	
209-A005	Geotextile Stabilization, Type V, Non-Woven	SY	9,445	
*** ROADSIDE DEVELOPMENT ITEMS ***				
211-B001	Topsoil for Slope Treatment, Contractor Furnished	CY	910	
213-C001	Superphosphate	TON	1	
216-A001	Solid Sodding	SY	8,190	
217-A001	Ditch Liner	SY	2,500	②
219-A001	Watering	KGAL	164	
220-A001	Insect Pest Control	ACRE	1	③
221-A001	Concrete Paved Ditch	CY	9	④
223-A001	Mowing	ACRE	2	
225-A001	Grassing	ACRE	2	
225-B001	Agricultural Limestone	TON	1	
225-C001	Mulch, Vegetative Mulch	TON	3	
226-A001	Temporary Grassing	ACRE	1	
234-A001	Temporary Silt Fence	LF	7,738	
234-D001	Inlet Siltation Guard	EA	35	
235-A001	Temporary Erosion Checks	EA	11	②
237-A001	Wattles, 12"	LF	1,380	
237-A002	Wattles, 20"	LF	44	
245-A001	Silt Dike	LF	44	
246-A001	Sandbags	LF	389	
815-F002	Sediment Control Stone	TON	242	②
*** BASE ITEMS ***				
304-B001	Granular Material, Class 3, Group C	TON	1,100	① ⑤
304-G001	Size 3/4" and Down Crushed Stone Base, AEA	CY	2,338	⑤ △
	OR			
304-G002	Size 610 Crushed Stone Base, AEA	CY	2,338	⑤ △

- ① INCLUDES A 20% INCREASE FROM CALCULATED QUANTITY.
- ② ESTIMATED QUANTITY. ACTUAL QUANTITY AND PLACEMENT TO BE AS DIRECTED BY THE ENGINEER.
- ③ TO BE USED AS DIRECTED BY THE ENGINEER.
- ④ INCLUDES QUANTITY FOR PAVED FLUME
- ⑤ QUANTITY DOES NOT INCLUDE PULL BOXES. THESE AMOUNTS ARE COST ABSORBED IN THE PULL BOXES. SEE PAY ITEM 637-A.
- ⑥ INCLUDES INLETS TO BE MODIFIED.
- ⑦ FOR TRAFFIC STRIPE ON BRIDGES OVER TOWN CREEK.
- ⑧ INCLUDES TERMINAL SECTIONS, BRIDGE END SECTIONS, FOOTINGS AND OTHER APPURTENANCES.
- △ ⑨ REQUIRED REMOVAL OF PAVED SHOULDERS AND SOIL CEMENT WILL BE PAID UNDER THIS ITEM.

△ △

ADDED FOOTNOTES	MW	ADDED FOOTNOTES AND UPDATED QUANTITIES	MW	By	
MISSISSIPPI DEPARTMENT OF TRANSPORTATION SUMMARY OF QUANTITIES					Working Number
Proj No: HSIP-2839-00(018) County: LEE					SQ-1
FILENAME : SQS Design Team GS&P					Sheet Number
Checked Date 9/12/17					13

ADDENDUM

STATE	PROJECT NO.
MISS	HSIP-2839-00(018)

SUMMARY OF QUANTITIES (SHEET 2)

PAY ITEM NO.	PAY ITEM	UNIT	QUANTITIES	
			Prelim	Final
	OR			
304-G003	Size 825B Crushed Stone Base, AEA	CY	2,338	
	*** BITUMINOUS PAVING ITEMS ***			
403-A001	12.5-mm, HT, Asphalt Pavement	TON	896	
403-A004	19-mm, HT, Asphalt Pavement	TON	1,094	
403-A006	19-mm, ST, Asphalt Pavement	TON	1,363	
403-A013	9.5-mm, HT, Asphalt Pavement	TON	13,288	
406-D001	Fine Milling of Bituminous Pavement, All Depths	SY	151,687	
407-A001	Asphalt for Tack Coat	GAL	9,592	
907-416-A001	High Friction Surface Treatment	SY	25,296	
501-A002	8" Reinforced Cement Concrete Pavement, Broom Finish	SY	190	
503-C010	Saw Cut, Full Depth	LF	4,368	
	*** DRAINAGE ITEMS ***			
601-B001	Class "B" Structural Concrete, Minor Structures	CY	44	
602-A001	Reinforcing Steel	LBS	4,337	
603-CA011	18" Reinforced Concrete Pipe, Class III	LF	496	
603-CA066	42" Reinforced Concrete Pipe, Class III	LF	208	
603-CB003	18" Reinforced Concrete End Section	EA	1	
603-CB007	42" Reinforced Concrete End Section	EA	1	
603-SB019	18" Branch Connections, Stub into Existing Inlet	EA	10	
604-A001	Castings	LBS	1,034	
604-B001	Gratings	LBS	454	
605-AA001	Geotextile for Subsurface Drainage, Type III	SY	980	
605-W001	Filter Material for Combination Storm Drain and/or Underdrains, Type A, FM	CY	80	
605-W002	Filter Material for Combination Storm Drain and/or Underdrains, Type B, FM	CY	100	
	*** INCIDENTAL CONSTRUCTION ITEMS ***			
606-B001	Guard Rail, Class A, Type 1	LF	938	
606-D017	Guard Rail, Bridge End Section, Type G	EA	2	
606-E005	Guard Rail, Terminal End Section, Flared	EA	6	
608-A001	Concrete Sidewalk, Without Reinforcement	SY	177	
609-B002	Concrete Curb, Header	LF	175	
609-D001	Combination Concrete Curb and Gutter Type 1	LF	4,630	
609-D003	Combination Concrete Curb and Gutter Type 2	LF	135	
612-A001	Flowable Fill, Excavatable	CY	10	
614-B001	Concrete Driveway, With Reinforcement	SY	629	
616-A001	Concrete Median and/or Island Pavement, 10-inch	SY	96	
	*** TRAFFIC CONTROL ITEMS ***			
618-A001	Maintenance of Traffic	LS	1	
619-A1004	Temporary Traffic Stripe, Continuous White, Paint	MI	12	
619-A1005	Temporary Traffic Stripe, Continuous White, Type 1 Tape	LF	5,971	
619-A2004	Temporary Traffic Stripe, Continuous Yellow, Paint	MI	8	
619-A2006	Temporary Traffic Stripe, Continuous Yellow, Type 1 Tape	LF	4,625	
619-A3003	Temporary Traffic Stripe, Skip White, Paint	MI	3	
619-A3006	Temporary Traffic Stripe, Skip White, Type 1 Tape	LF	1,171	

③ △

⑦

⑧ △

④

①


②

⑥

⑤

- ① INCLUDES 6 C.Y. FOR JUNCTION BOX LIDS AND JUNCTION BOXES, 35 C.Y. FOR DRAINAGE STRUCTURES, 0.195 C.Y. FOR FLARED END SECTIONS, & 2.9 C.Y. FOR SIGN FOOTING.
- ② INCLUDES 1203 LBS. FOR JUNCTION BOX LIDS AND JUNCTION BOXES & 3,134 LBS. FOR DRAINAGE STRUCTURES.
- ③ QUANTITY DOES NOT INCLUDE PULL BOXES. THESE AMOUNTS ARE COST ABSORBED IN THE PULL BOXES. SEE PAY ITEM 637-A.
- ④ TO BE USED FOR CONCRETE DRIVEWAY REMOVAL, CONCRETE PAVEMENT REMOVAL, AND CURB & GUTTER REMOVAL, ALL TYPES.
- ⑤ QUANTITY INCLUDES 300 LF TO BE USED BY ENGINEER IN REPAIRING EXISTING CURB & GUTTER WITHIN THE PROJECT LIMITS.
- ⑥ LENGTH OF GUARDRAIL REQUIRED IS BASED ON A TERMINAL SECTION OF 37.5 FEET BEING USED. FOR ANY OTHER LENGTH TERMINAL SECTION, THE LENGTH OF NORMAL GUARDRAIL WILL BE ADJUSTED.
- ⑦ REMOVAL OF EXISTING HIGH FRICTION SURFACE TREATMENT SHALL BE COST ABSORBED IN THE PAY ITEM.
- △ ⑧ DOWEL BARS REQUIRED TO TIE TO EXISTING CONCRETE SURFACES WILL BE ABSORBED IN THIS ITEM.

△ △

ADDED FOOTNOTES	MW	By	<p>MISSISSIPPI DEPARTMENT OF TRANSPORTATION SUMMARY OF QUANTITIES</p> 
	MW		
ADDED FOOTNOTES AND UPDATED QUANTITIES			Proj No: HSIP-2839-00(018) County: LEE Working Number SQ-2
09/11/2017	09/14/2017		FILENAME : SQS Design Team GS&P Checked Date 9/12/17 Sheet Number 14

ADDENDUM

STATE	PROJECT NO.
MISS.	HSIP-2839-00(018)

TRAFFIC CONTROL PLAN – CONSTRUCTION PHASING NOTES

- * WORK HOURS LIMITED TO 7P.M TO 7A.M., SUNDAY NIGHT THROUGH THURSDAY NIGHT. NO LANE CLOSURES ALLOWED OUTSIDE OF WORK HOURS.
- ▲ * WORK ZONE LOCATIONS ARE LISTED PER PHASE. ONLY THREE (3) WORK ZONE LOCATIONS CAN BE CONSTRUCTED AT ANY GIVEN TIME. THE LOCATION(S) MUST BE COMPLETED UP TO BUT NOT INCLUDING THE TOP LIFT OF ASPHALT, CONCRETE CURB MUST BE PLACED, AND SLOPES MUST BE SODDED PRIOR TO OPENING ANOTHER LOCATION.
- * NO CONSTRUCTION SHALL OCCUR NORTH OF GREEN STREET BETWEEN NOVEMBER 14 AND JANUARY 14.
- * IN AREAS WHERE RIGHT TURN LANE ADDITIONS OR WIDENINGS CONFLICT WITH EXISTING SIGNAL POLES, THE WORK SHALL NOT BEGIN UNTIL NEW SIGNAL POLES ARE DELIVERED AND INSTALLED. CONTRACTOR SHALL COORDINATE WITH THE PROJECT ENGINEER IF CONSTRUCTION OF LOCATIONS DIFFERS FROM THE LOCATION ORDER AS DETAILED IN PHASE 1 AND PHASE 2.
- * PRIOR TO LOOP DETECTOR REMOVAL, VDS OR MULTISENSOR DETECTION SHALL BE INSTALLED.
- * WHERE WIDENING PROVIDES LEFT OR THRU LANES AT NEW LOCATIONS, VDS OR MULTISENSOR DETECTION MUST BE PROVIDED.

PHASE 1 SCOPE OF WORK:

DURING PHASE 1, S.R. 145 TRAFFIC AND LOCAL ROAD TRAFFIC WILL REMAIN ON THE EXISTING ROADWAYS.

PHASE 1 CONSTRUCTION WILL INCLUDE THE FOLLOWING:

- * CONSTRUCTION OF RIGHT TURN ADDITIONS, PERMANENT DRAINAGE, DRIVEWAY CLOSURES, DRIVEWAYS, SIDEWALK AND PAVEMENT WIDENING WHERE EXISTING SIGNALS DO NOT CONFLICT WITH PROPOSED WORK ON THE EAST SIDE OF S.R. 145 AS INDICATED.
- * CONSTRUCTION OF RIGHT TURN ADDITIONS, PERMANENT DRAINAGE AND PAVEMENT WIDENING WHERE EXISTING SIGNALS DO NOT CONFLICT WITH PROPOSED WORK ON THE SOUTH SIDE OF BARNES CROSSING.
- * PERMANENT SIGNAL POLES MUST BE IN PLACE AND SIGNAL HEAD CONFIGURATION COMPLETED AS SHOWN ON TC-SIG FOR THE INTERSECTION OF S.R. 145 AND BARNES CROSSING PRIOR TO BEGINNING WORK AT THIS INTERSECTION.
- * CONSTRUCTION OF PAVEMENT WIDENING WHERE EXISTING SIGNALS DO NOT CONFLICT WITH PROPOSED WORK ON THE US 45 SOUTHEAST OFF-RAMP.
- * CONSTRUCTION OF CULVERT EXTENSION, SIDEWALK, AND CONCRETE DITCH AT THE SOUTHEAST CORNER OF S.R. 145 AND COMMONWEALTH.
- * INSTALL GRANULAR MATERIAL TO MAINTAIN ALLOWABLE DROP OFF AS NEEDED.
- * LOCATIONS ON EAST SIDE OF S.R. 145:
 - 37+57 TO 38+90
 - 134+60 TO 136+91
 - 147+27 TO 149+63
 - 163+71 TO 166+40
 - 185+57 TO 187+85
 - 192+30 TO 194+54
- * LOCATIONS ON SOUTH SIDE OF BARNES CROSSING:
 - 296+57 TO 299+60
 - 300+15 TO 306+31
 - 307+23 TO 309+84
 - 314+78 TO 317+70
 - 318+55 TO 325+53
- * LOCATION AT U.S. 45 S.E. OFF-RAMP:
 - 594+00 TO 599+95

PHASE 2 SCOPE OF WORK:

DURING PHASE 2, S.R. 145 TRAFFIC AND LOCAL ROAD TRAFFIC WILL REMAIN ON THE EXISTING ROADWAYS.

PHASE 2 CONSTRUCTION WILL INCLUDE THE FOLLOWING:

- * CONSTRUCTION OF RIGHT TURN ADDITIONS, PERMANENT DRAINAGE, DRIVEWAY CLOSURES, DRIVEWAYS, SIDEWALK AND PAVEMENT WIDENING WHERE EXISTING SIGNALS DO NOT CONFLICT WITH PROPOSED WORK ON THE WEST SIDE OF S.R. 145, AS INDICATED.
- * CONSTRUCTION OF RIGHT TURN ADDITIONS, PERMANENT DRAINAGE AND PAVEMENT WIDENING WHERE EXISTING SIGNALS DO NOT CONFLICT WITH PROPOSED WORK ON THE NORTH SIDE OF BARNES CROSSING.
- * RECONSTRUCTION OF MEDIAN ON MISSISSIPPI DRIVE.
- * LOCATIONS ON WEST SIDE OF S.R. 145:
 - 37+50 TO 44+00
 - 162+33 TO 166+86
 - 200+29 TO 202+33
- * LOCATIONS ON NORTH SIDE OF BARNES CROSSING:
 - 317+63 TO 324+14
 - 332+72 TO 333+69


PHASE 3 SCOPE OF WORK:

DURING PHASE 3, S.R. 145 TRAFFIC AND LOCAL ROAD TRAFFIC WILL REMAIN ON THE EXISTING ROADWAYS.

PHASE 3 CONSTRUCTION WILL INCLUDE THE FOLLOWING:

- * INSTALL PERMANENT TRAFFIC SIGNALS
- * INSTALL ITS DURING THIS PHASE UNLESS OTHERWISE DIRECTED BY THE PROJECT ENGINEER.
- * FINE MILL EXISTING LANES OF S.R. 145, BARNES CROSSING, AND U.S. 45 S.E. OFF-RAMP. COORDINATE WITH PROJECT ENGINEER REGARDING LANE CLOSURES.
- * OVERLAY MILLED LANES OF S.R. 145, BARNES CROSSING, AND U.S. 45 S.E. OFF-RAMP.
- ▲ * REMOVE EXISTING HIGH FRICTION COURSE PAVEMENT ON S.R. 178 ON AND OFF RAMP/LOOPS AND S.R. 145.
- ▲ * INSTALL HIGH FRICTION COURSE PAVEMENT ON THE S.R. 178 ON AND OFF RAMP/LOOPS AND ON S.R. 145. RAMP/LOOPS SHALL BE CLOSED NO LONGER THAN 24 HOURS TO ALLOW FOR DRYING OF HIGH FRICTION COURSE PAVEMENT. ONLY ONE RAMP/LOOP SHALL BE CLOSED AT A TIME.
- * INSTALL PERMANENT STRIPING. COORDINATE WITH PROJECT ENGINEER REGARDING LANE CLOSURES.
- * INSTALL PERMANENT SIGNING

9/11/2017 2:12 PM TC-GN1.DGN

<table border="1"> <tr> <td>9/12/17</td> <td>REVISED NOTES</td> <td>DATE</td> </tr> <tr> <td></td> <td>REVISION</td> <td></td> </tr> </table>	9/12/17	REVISED NOTES	DATE		REVISION		<table border="1"> <tr> <td>MRW</td> <td>BY</td> </tr> <tr> <td></td> <td></td> </tr> </table>	MRW	BY			MISSISSIPPI DEPARTMENT OF TRANSPORTATION TRAFFIC CONTROL PLAN CONSTRUCTION PHASING NOTES	 WORKING NUMBER TC-GN1 SHEET NUMBER 76
	9/12/17	REVISED NOTES	DATE										
	REVISION												
MRW	BY												
PROJ. NO. HSIP-2839-00(018) LEE COUNTY FILENAME: TC-GN1.DGN DESIGN TEAM _____ CHECKED _____ DATE _____													