

STATE	PROJECT NUMBER	SHEET NO.
MISSISSIPPI	HSIP-2839-00(018)	1

STATE OF MISSISSIPPI

MISSISSIPPI DEPARTMENT OF TRANSPORTATION

PLAN AND PROFILE OF PROPOSED STATE HIGHWAY FEDERAL AID PROJECT NO. HSIP-2839-00(018)

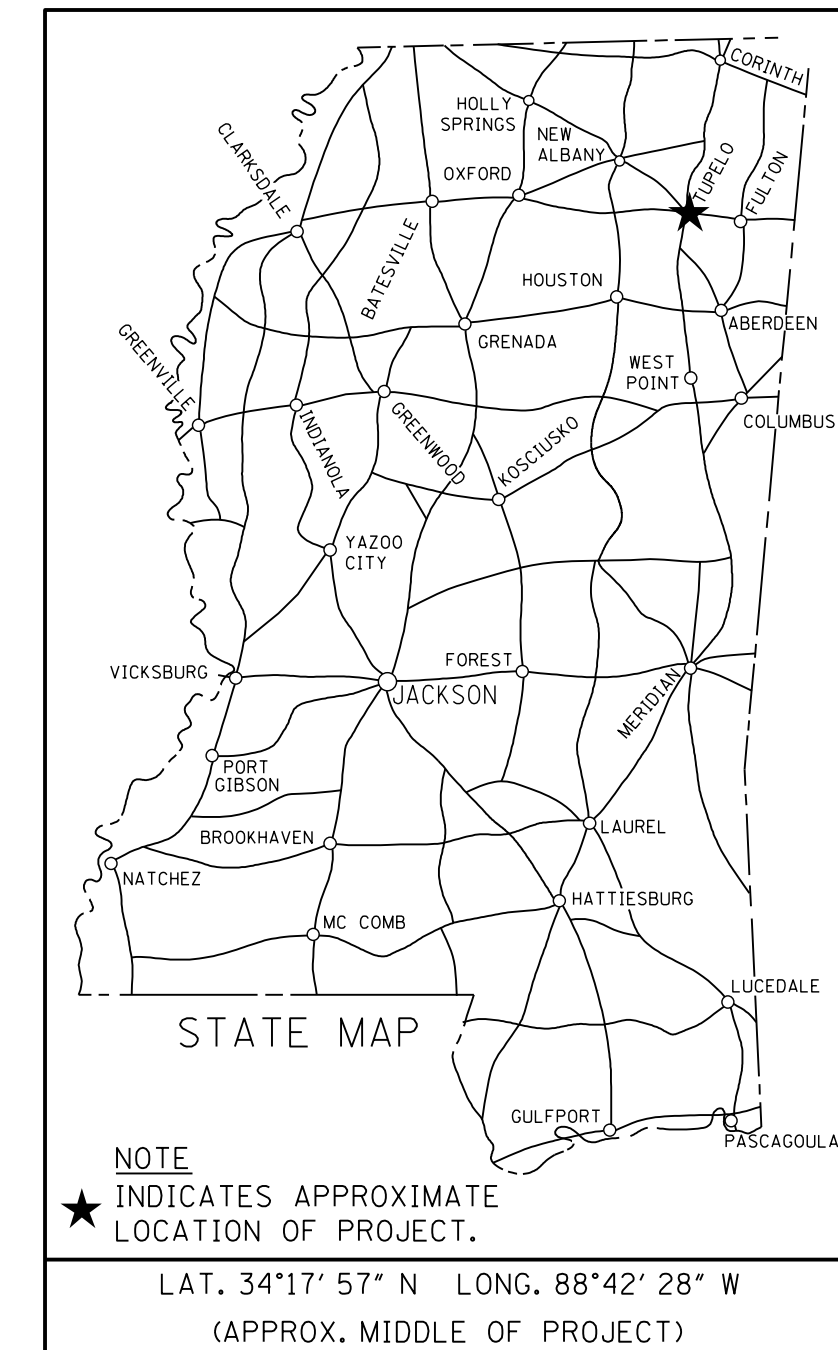
SAFETY IMPROVEMENTS ALONG S.R. 145 FROM S.R. 145 AND S.R. 178 INTERCHANGE TO BEECH SPRINGS RD, AND ALONG BARNES CROSSING RD FROM 0.166 MILES WEST OF S.R. 145 TO CROSS CREEK DR.

LEE COUNTY

FMS. CONST. NO. 106953/301000

GENERAL INDEX

INCLUDED THIS PROJECT	BEGIN WITH SHEET
<input checked="" type="checkbox"/> ROADWAY	1
<input checked="" type="checkbox"/> PERMANENT SIGNS	1001
<input checked="" type="checkbox"/> TRAFFIC SIGNALS	2001
<input checked="" type="checkbox"/> ITS COMPONENTS	3001
<input type="checkbox"/> LIGHTING	4001
<input type="checkbox"/> (RESERVED)	5001
<input checked="" type="checkbox"/> ROADWAY STANDARD DWGS	6001
<input type="checkbox"/> BOX CULVERT STD. DRAWINGS (LRFD)	7001
<input type="checkbox"/> BOX CULVERT STD. DRAWINGS (STD. SPEC.)	7501
<input type="checkbox"/> BRIDGE	8001
<input checked="" type="checkbox"/> CROSS SECTIONS	9001



BRIDGE STRUCTURES REQ'D.

NONE

**BEGIN CONSTRUCTION
STA. 34+62.841
(S.R. 145 STATIONING)**

BOX BRIDGES REQ'D.

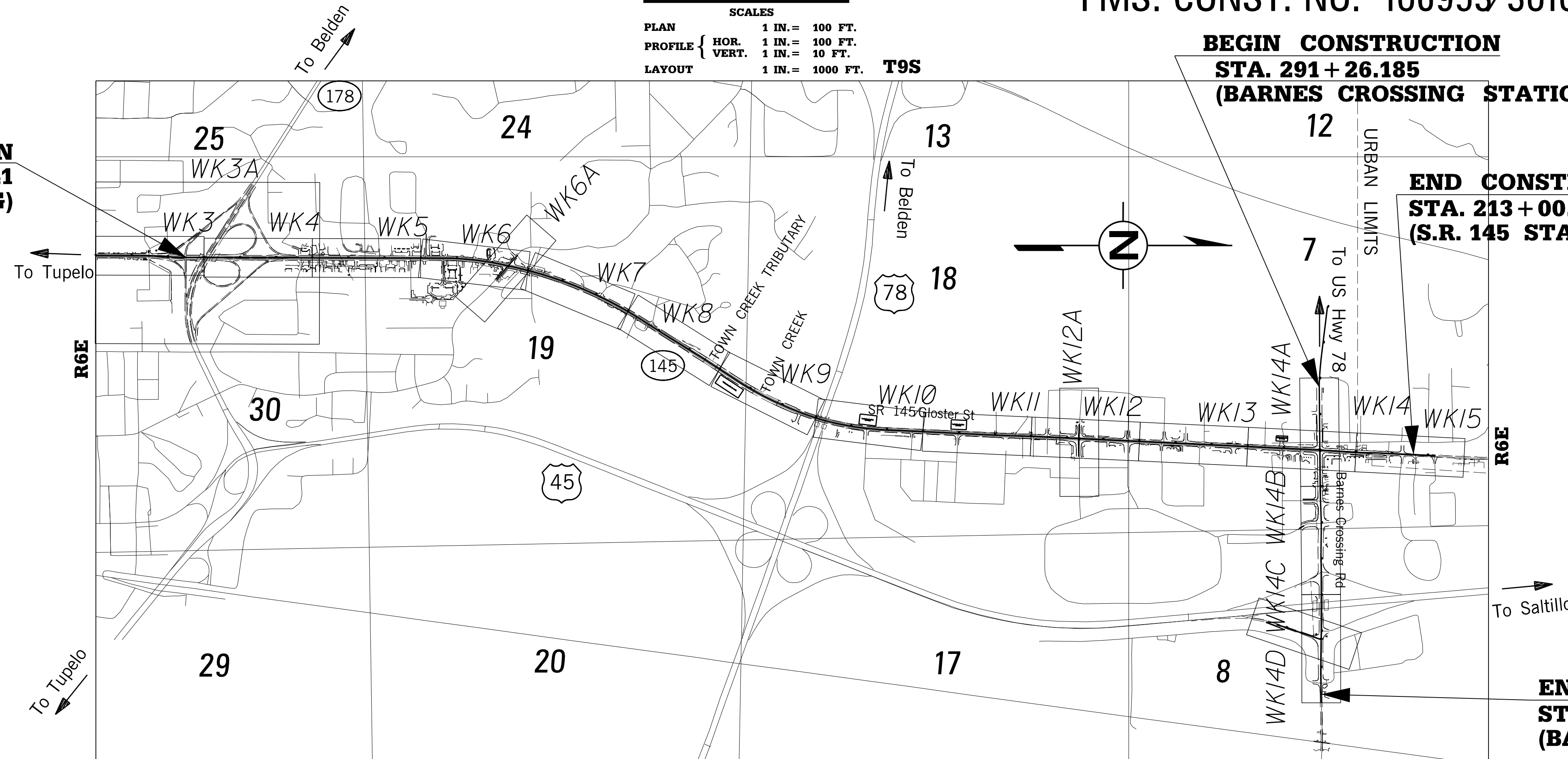
NONE

SCALES

PLAN	1 IN. = 100 FT.
PROFILE	HOR. 1 IN. = 100 FT.
	VERT. 1 IN. = 10 FT.
LAYOUT	1 IN. = 1000 FT.

**BEGIN CONSTRUCTION
STA. 291+26.185
(BARNES CROSSING STATIONING)**

**END CONSTRUCTION
STA. 213+00.000
(S.R. 145 STATIONING)**



DESIGN CONTROL

45 MPH = V (SPEED DESIGN)

ADT (2018) = 23000 ; ADT (2038) = 29000
DHV = 3200 ; D = 60 % T = 3 %

PERMITS ACQUIRED BY MDOT

WETLANDS AND WATERS PERMITS (NECESSARY FOR ULTIMATE IMPROVEMENTS ONLY):

	WATERS	WETLANDS
NATIONWIDE #14	<input type="checkbox"/>	<input type="checkbox"/>
NATIONWIDE (OTHER)*	<input type="checkbox"/>	<input type="checkbox"/>
GENERAL*	<input type="checkbox"/>	<input type="checkbox"/>
INDIVIDUAL (404)*	<input type="checkbox"/>	<input type="checkbox"/>

* ACQUISITION OF PERMITS FOR TEMPORARY IMPACTS DURING CONSTRUCTION ARE THE RESPONSIBILITY OF THE CONTRACTOR

STORMWATER PERMIT

Y REQUIRED, CNOI SUBMITTED BY MDOT (DISTURBED AREA = 5 ACRES)
S REQUIRED, CNOI TO BE SUBMITTED BY CONTRACTOR (1 TO 4.99 ACRES)
N NO STORMWATER PERMIT REQUIRED (<1 ACRE)

APPROVED BY: _____

CONVENTIONAL SYMBOLS

COUNTY LINE	-----
TOWN CORPORATION LINE	-----
SECTION LINE	-----
EXISTING ROAD OR TRAVELED WAY	-----
PROPOSED ROAD OR TRAVELED WAY	-----
RAILROAD	-----
SURVEY LINE	-----
BRIDGES	-----

EQUATIONS

NONE

EXCEPTIONS

NONE

LENGTH DATA

LENGTH OF ROADWAY	21,386	FT.	4.050	MI.
LENGTH OF BRIDGES	694	FT.	0.131	MI.
LENGTH OF PROJECT (NET)			4.181	MI.
LENGTH OF EXCEPTIONS	0	FT.	0	MI.
LENGTH OF PROJECT (GROSS)			4.181	MI.

DATE: 06/07/2017	DATE: 06/07/2017 (SIGNALS ONLY)	DATE: 06/07/2017 (ITS ONLY)
------------------	------------------------------------	--------------------------------

P S & E DATE: 6/7/2017

APPROVED: _____

DEPUTY EXECUTIVE DIRECTOR / CHIEF ENGINEER

EXECUTIVE DIRECTOR

MDOT
MISSISSIPPI DEPARTMENT OF TRANSPORTATION

6/6/2017 5:38 PM TLE.DGN

1st O.REV.

STATE	PROJECT NO.
MISS.	HSIP-2839-00(018)

DESCRIPTION OF SHEET

WKG. NO. SH. NO.

ROADWAY		
TITLE SHEET (1)	TITLE	1
DETAILED INDEX AND GENERAL NOTES (4)		
DETAILED INDEX	DI-1	2
DETAILED INDEX	DI-2	3
DETAILED INDEX	DI-3	4
GENERAL NOTES	GN-1	5
TYPICAL SECTIONS (7)		
TYPICAL SECTION - SR 145 / GLOSTER ST	TS-1	6
TYPICAL SECTION - SR 145 / GLOSTER ST	TS-2	7
TYPICAL SECTION - SR 145 / GLOSTER ST & LAKESHIRE DR	TS-3	8
TYPICAL SECTION - SR 145 / GLOSTER ST	TS-4	9
TYPICAL SECTION - MISSISSIPPI DR	TS-5	10
TYPICAL SECTION - BARNES CROSSING RD	TS-6	11
TYPICAL SECTION - BARNES CROSSING RD & U.S. 45 S.E. RAMP	TS-7	12
QUANTITY SHEETS (22)		
SUMMARY OF QUANTITIES	SQ-1	13
SUMMARY OF QUANTITIES	SQ-2	14
SUMMARY OF QUANTITIES	SQ-3	15
SUMMARY OF QUANTITIES	SQ-4	16
SUMMARY OF QUANTITIES	SQ-5	17
SUMMARY OF QUANTITIES	SQ-6	18
ESTIMATED QUANTITIES - REMOVAL ITEMS	EQ-1	19
ESTIMATED QUANTITIES - EARTHWORKS	EQ-2	20
ESTIMATED QUANTITIES - EROSION CONTROL	EQ-3	21
ESTIMATED QUANTITIES - DRAINAGE STRUCTURES	EQ-4	22
ESTIMATED QUANTITIES - JUNCTION BOXES	EQ-5	23
ESTIMATED QUANTITIES - COMBINATION CURB & GUTTER	EQ-6	24
ESTIMATED QUANTITIES - GUARD RAIL & DELINEATORS	EQ-7	25
ESTIMATED QUANTITIES - DRIVEWAYS	EQ-8	26
ESTIMATED QUANTITIES - PAVEMENT MARKINGS	EQ-9	27
ESTIMATED QUANTITIES - STANDARD ROADSIDE ASSEMBLIES	EQ-10	28
ESTIMATED QUANTITIES - STANDARD ROADSIDE ASSEMBLIES (CONTINUED)	EQ-11	29
ESTIMATED QUANTITIES - STANDARD ROADSIDE & DIRECTIONAL SIGNS	EQ-12	30
ESTIMATED QUANTITIES - TRAFFIC CONTROL ITEMS	EQ-13	31
ESTIMATED QUANTITIES - TRAFFIC CONTROL SIGNS	EQ-14	32
ESTIMATED QUANTITIES - TRAFFIC SIGNALS	TSQ-1	33
ESTIMATED QUANTITIES - ITS	EQ-ITS	34
PLAN & PROFILE SHEETS (20)		
SR 145 STA. 25+00.00 TO STA. 40+00.00	WK-3	35
SR 145 AT SR 178 LIMITS OF HIGH FRICTION SURFACE TREATMENT	WK-3A	36
SR 145 STA. 40+00.00 TO STA. 55+00.00	WK-4	37
SR 145 STA. 55+00.00 TO STA. 70+00.00	WK-5	38
SR 145 STA. 70+00.00 TO STA. 85+00.00	WK-6	39
LAKESHIRE DR & SPICER DR	WK-6A	40
SR 145 STA. 85+00.00 TO STA. 100+00.00	WK-7	41
SR 145 STA. 100+00.00 TO STA. 115+00.00	WK-8	42
SR 145 STA. 115+00.00 TO STA. 130+00.00	WK-9	43
SR 145 STA. 130+00.00 TO STA. 145+00.00	WK-10	44
SR 145 STA. 145+00.00 TO STA. 160+00.00	WK-11	45
SR 145 STA. 160+00.00 TO STA. 175+00.00	WK-12	46
MISSISSIPPI DR	WK-12A	47
SR 145 STA. 175+00.00 TO STA. 190+00.00	WK-13	48
SR 145 STA. 190+00.00 TO STA. 205+00.00	WK-14	49
BARNES CROSSING ROAD STA. 291+26.18 TO STA. 305+00.00	WK-14A	50
BARNES CROSSING ROAD STA. 305+00.00 TO STA. 320+00.00	WK-14B	51
BARNES CROSSING ROAD STA. 320+00.00 TO STA. 335+00.00	WK-14C	52
US 45 S.E. RAMP	WK-14D	53
SR 145 STA. 205+00.00 TO E.O.P	WK-15	54

DESCRIPTION OF SHEET

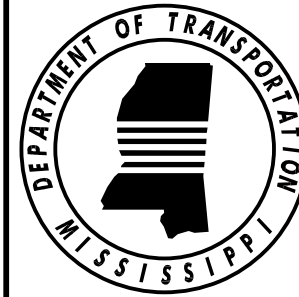
WKG. NO. SH. NO.

EROSION CONTROL SHEETS (20)		
EROSION CONTROL - SR 145 STA. 25+00.00 TO STA. 40+00.00	ECP-3	55
SR 145 AT SR 178 LIMITS OF HIGH FRICTION SURFACE TREATMENT	ECP-3A	56
EROSION CONTROL - SR 145 STA. 40+00.00 TO STA. 55+00.00	ECP-4	57
EROSION CONTROL - SR 145 STA. 55+00.00 TO STA. 70+00.00	ECP-5	58
EROSION CONTROL - SR 145 STA. 70+00.00 TO STA. 85+00.00	ECP-6	59
EROSION CONTROL - LAKESHIRE DR & SPICER DR	ECP-6A	60
EROSION CONTROL - SR 145 STA. 85+00.00 TO STA. 100+00.00	ECP-7	61
EROSION CONTROL - SR 145 STA. 100+00.00 TO STA. 115+00.00	ECP-8	62
EROSION CONTROL - SR 145 STA. 115+00.00 TO STA. 130+00.00	ECP-9	63
EROSION CONTROL - SR 145 STA. 130+00.00 TO STA. 145+00.00	ECP-10	64
EROSION CONTROL - SR 145 STA. 145+00.00 TO STA. 160+00.00	ECP-11	65
EROSION CONTROL - SR 145 STA. 160+00.00 TO STA. 175+00.00	ECP-12	66
EROSION CONTROL - MISSISSIPPI DR	ECP-12A	67
EROSION CONTROL - SR 145 STA. 175+00.00 TO STA. 190+00.00	ECP-13	68
EROSION CONTROL - SR 145 STA. 190+00.00 TO STA. 205+00.00	ECP-14	69
EROSION CONTROL - BARNES CROSSING DR STA. 291+26.18 TO STA. 305+00.00	ECP-14A	70
EROSION CONTROL - BARNES CROSSING DR STA. 305+00.00 TO STA. 320+00.00	ECP-14B	71
EROSION CONTROL - BARNES CROSSING DR STA. 320+00.00 TO STA. 335+00.00	ECP-14C	72
EROSION CONTROL - US 45 S.E. RAMP	ECP-14D	73
EROSION CONTROL - SR 145 STA. 205+00.00 TO E.O.P	ECP-15	74
CONSTRUCTION SIGNING SHEET (1)	CS-1	75
TRAFFIC CONTROL SHEETS (16)		
TRAFFIC CONTROL CONSTRUCTION PHASING NOTES	TC-GN1	76
TRAFFIC CONTROL GENERAL NOTES	TC-GN2	77
TRAFFIC CONTROL PHASE 1 CONSTRUCTION TYPICAL SECTIONS	TC-TS1	78
TRAFFIC CONTROL PHASE 2 CONSTRUCTION TYPICAL SECTIONS	TC-TS2	79
PHASE 1 SR 145 STA. 25+00.00 TO STA. 56+00.00	TC-1	80
PHASE 1 SR 145 STA. 63+00.00 TO STA. 96+00.00	TC-2	81
PHASE 1 SR 145 STA. 124+00.00 TO STA. 156+00.00	TC-3	82
PHASE 1 SR 145 STA. 159+00.00 TO STA. 197+00.00	TC-4	83
PHASE 1 SR 145 STA. 282+00.00 TO STA. 313+00.00	TC-5	84
PHASE 1 SR 145 STA. 313+00.00 TO STA. 335+00.00	TC-6	85
PHASE 2 SR 145 STA. 29+00.00 TO STA. 58+00.00	TC-7	86
PHASE 2 SR 145 STA. 65+00.00 TO STA. 102+00.00	TC-8	87
PHASE 2 SR 145 STA. 150+00.00 TO STA. 197+00.00	TC-9	88
PHASE 2 SR 145 STA. 282+00.00 TO STA. 313+00.00	TC-10	89
PHASE 2 SR 145 STA. 313+00.00 TO STA. 335+00.00	TC-11	90
TEMPORARY SIGNAL LAYOUT DETAILS TRAFFIC CONTROL PHASE 1	TC-SIG	91
FORM GRADES (11)		
SR 145/GLOSTER ST AT COMMONWEALTH	FG-1	92
SR 145/GLOSTER ST AT MEL DR	FG-2	93
SR 145/GLOSTER ST AT MISSISSIPPI DR	FG-3	94
SR 145/GLOSTER ST AT KOHLS	FG-4	95
SR 145/GLOSTER ST AT HARMONY LN	FG-5	96
BARNES CROSSING RD AT SR 145/GLOSTER ST	FG-6	97
BARNES CROSSING RD AT MELODY LN	FG-7	98
BARNES CROSSING RD AT MALL DR	FG-8	99
BARNES CROSSING RD AT U.S. 45 SW RAMP	FG-9	100
BARNES CROSSING RD AT U.S. 45 SE RAMP	FG-10	101
U.S. 45 SE RAMP AT BARNES CROSSING RD	FG-11	102

B:\17\2017\12453PM\DI.DGN MISSISSIPPI DEPARTMENT OF TRANSPORTATION PLAN DIVISION

DATE:08/16/2017

PS & E PLANS-DATE 6/7/2017			
FMS CON. #106953/301000			
REVISIONS			
DATE	SHEET NO.	BY	
6/23/17	2, 16, 17, 18, 29, 30,	MRW	
	33, 121, 1006, 1007,		
	2009		
7/18/17	2, 52, 72, 117	MRW	
8/16/17	2,15,27,50,51,70,71	MRW	

MISSISSIPPI DEPARTMENT OF TRANSPORTATION	
DETAILED INDEX	
	
PROJ. NO. HSIP-2839-00(018)	
LEE COUNTY	
FILENAME: DI.DGN	WORKING NUMBER
DESIGN TEAM	DI-1
CHECKED	SHEET NUMBER
DATE	2

STATE	PROJECT NO.
MISS.	HSIP-2839-00(018)

DESCRIPTION OF SHEET

WKG. NO. SH. NO.

DESCRIPTION OF SHEET	WKG. NO.	SH. NO.
INTERSECTION DETAIL SHEETS (15)		
INTERSECTION DETAIL - SR 145 / GLOSTER ST OVERPASS AT SR 178	ID-1	103
INTERSECTION DETAIL - SR 145 / GLOSTER ST AT SPICER ROAD	ID-2	104
INTERSECTION DETAIL - SR 145 / GLOSTER ST AT LAKESHIRE DR	ID-3	105
INTERSECTION DETAIL - SR 145 / GLOSTER ST AT COMMONWEALTH	ID-4	106
INTERSECTION DETAIL - SR 145 / GLOSTER ST AT MEL DR	ID-5	107
INTERSECTION DETAIL - SR 145 / GLOSTER ST AT MISSISSIPPI DR	ID-6	108
INTERSECTION DETAIL - SR 145 / GLOSTER ST AT KOHLS	ID-7	109
INTERSECTION DETAIL - SR 145 / GLOSTER ST AT HARMONY LN	ID-8	110
INTERSECTION DETAIL - SR 145 / GLOSTER ST AT BARNES CROSSING	ID-9	111
INTERSECTION DETAIL - BARNES CROSSING AT BURGER KING	ID-10	112
INTERSECTION DETAIL - BARNES CROSSING AT MALL DR	ID-11	113
INTERSECTION DETAIL - BARNES CROSSING AT US-45 SW RAMP	ID-12	114
INTERSECTION DETAIL - BARNES CROSSING AT US-45 SE RAMP	ID-13	115
INTERSECTION DETAIL - US-45 SE RAMP AT BARNES CROSSING	ID-14	116
INTERSECTION DETAIL - BARNES CROSSING AT CROSS CREEK DR	ID-15	117
PERMANENT PAVEMENT MARKING SHEETS (17)		
PAVEMENT MARKING - SR 145 / GLOSTER ST STA. 25+00 TO STA. 40+00	PMD-1	118
PAVEMENT MARKING - SR 145 / GLOSTER ST STA. 40+00 TO STA. 55+00	PMD-2	119
PAVEMENT MARKING - SR 145 / GLOSTER ST STA. 55+00 TO STA. 70+00	PMD-3	120
PAVEMENT MARKING - SR 145 / GLOSTER ST STA. 70+00 TO STA. 85+00	PMD-4	121
PAVEMENT MARKING - SR 145 / GLOSTER ST STA. 85+00 TO STA. 100+00	PMD-5	122
PAVEMENT MARKING - SR 145 / GLOSTER ST STA. 100+00 TO STA. 115+00	PMD-6	123
PAVEMENT MARKING - SR 145 / GLOSTER ST STA. 115+00 TO STA. 130+00	PMD-7	124
PAVEMENT MARKING - SR 145 / GLOSTER ST STA. 130+00 TO STA. 145+00	PMD-8	125
PAVEMENT MARKING - SR 145 / GLOSTER ST STA. 145+00 TO STA. 160+00	PMD-9	126
PAVEMENT MARKING - SR 145 / GLOSTER ST STA. 160+00 TO STA. 175+00	PMD-10	127
PAVEMENT MARKING - SR 145 / GLOSTER ST STA. 175+00 TO STA. 190+00	PMD-11	128
PAVEMENT MARKING - SR 145 / GLOSTER ST STA. 190+00 TO STA. 205+00	PMD-12	129
PAVEMENT MARKING - SR 145 / GLOSTER ST STA. 205+00 TO STA. 216+00	PMD-13	130
PAVEMENT MARKING - BARNES CROSSING RD STA. 290+00 TO STA. 305+00	PMD-14	131
PAVEMENT MARKING - BARNES CROSSING RD STA. 305+00 TO STA. 320+00	PMD-15	132
PAVEMENT MARKING - BARNES CROSSING RD STA. 320+00 TO STA. 334+00	PMD-16	133
PAVEMENT MARKING - US-45 S.E. RAMP STA. 595+00 TO STA. 599+00	PMD-17	134
MISCELLANEOUS ROADWAY ITEMS (39)		
CONTROL POINTS	CPL-1	135
SUMMARY OF CULVERT HYDRAULIC DESIGN	CHD-1	136
VEGETATION SCHEDULE	VS-1	137
EROSION CONTROL DETAILS	ECD-1	138
EROSION CONTROL DETAILS	ECD-2	139
EROSION CONTROL DETAILS	ECD-3	140
EROSION CONTROL DETAILS	ECD-4	141
EROSION CONTROL DETAILS	ECD-5	142
EROSION CONTROL DETAILS	ECD-6	143
EROSION CONTROL DETAILS	ECD-7	144
EROSION CONTROL DETAILS	ECD-8	145
EROSION CONTROL DETAILS	ECD-9	146
EROSION CONTROL DETAILS	ECD-10	147
EROSION CONTROL DETAILS	ECD-11	148
EROSION CONTROL DETAILS	ECD-12	149
EROSION CONTROL DETAILS	ECD-13	150
EROSION CONTROL DETAILS	ECD-14	151
EROSION CONTROL DETAILS	ECD-15	152
EROSION CONTROL DETAILS	ECD-16	153
EROSION CONTROL DETAILS	ECD-17	154
EROSION CONTROL DETAILS	ECD-18	155
EROSION CONTROL DETAILS	ECD-19	156
EROSION CONTROL DETAILS	ECD-20	157
EROSION CONTROL DETAILS	ECD-21	158
EROSION CONTROL DETAILS	ECD-22	159
EROSION CONTROL	EC-1	160
TYPICAL TEMPORARY EROSION CONTROL MEASURES	TEC-2	161
TYPICAL TEMPORARY EROSION CONTROL MEASURES	TEC-3	162
DETAILS OF TYPICAL DITCH TREATMENTS	DT-1	163
TRAFFIC CONTROL PLAN FOR POSTED SPEED LIMIT LESS THAN 65 MPH	SDTCP-3	164
HIGHWAY SIGN AND BARRICADE DETAILS FOR CONSTRUCTION PROJECTS	SDTCP-10	165

DESCRIPTION OF SHEET


WKG. NO. SH. NO.

DESCRIPTION OF SHEET	WKG. NO.	SH. NO.
DRIVEWAYS, CURB & GUTTER & SIDEWALK	SDSD-1	166
DRIVEWAYS, INTEGRAL CURB & SIDEWALK	SDSD-2	167
TRAFFIC CONTROL DETAILS DRUM PLACEMENT AND SHOULDER CLOSURE	TCP-SC	168
ISLAND PAVEMENT DETAILS	SD-IP-1	169
GUARDRAIL: "W" BEAM (WOOD POSTS)	GR-1	170
TYPICAL INSTALLATION AND DETAILS OF DELINEATORS AND DISTANCE REFERENCE	SDSN-8	171
SIGNS		
GUARDRAIL: "W" BEAM (STEEL POSTS)	GR-1B	172
GUARDRAIL: END SECTIONS TYPE "E", "F", & "G"	GR-2A	173
PERMANENT SIGNS (7)		
SR 145 / GLOSTER ST - STA. 25+00 TO STA. 57+00	PSP-1	1001
SR 178 RAMPS AT SR 145 / GLOSTER ST	PSP-1A	1002
SR 145 / GLOSTER ST - STA. 121+00 TO STA. 153+00	PSP-2	1003
SR 145 / GLOSTER ST - STA. 153+00 TO STA. 185+00	PSP-3	1004
SR 145 / GLOSTER ST - STA. 185+00 TO STA. 216+00	PSP-4	1005
BARNES CROSSING RD - STA. 304+00 TO STA. 335+00	PSP-5	1006
DIRECTIONAL SIGNING DETAILS	DSD-1	1007
TRAFFIC SIGNAL SHEETS (22)		
SR 145 / GLOSTER ST AT SR 178	TRS-1	2001
SR 145 / GLOSTER ST AT N GREEN ST	TRS-2	2002
SR 145 / GLOSTER ST AT COMMONWEALTH	TRS-3	2003
SR 145 / GLOSTER ST AT MEL DR	TRS-4	2004
SR 145 / GLOSTER ST AT MISSISSIPPI DR	TRS-5	2005
SR 145 / GLOSTER ST AT SYMPHONY LN	TRS-6	2006
SR 145 / GLOSTER ST AT BED, BATH, & BEYOND	TRS-7	2007
SR 145 / GLOSTER ST AT KOHLS	TRS-8	2008
SR 145 / GLOSTER ST AT BARNES CROSSING	TRS-9	2009
SR 145 / GLOSTER ST AT BEECH SPRINGS	TRS-10	2010
BARNES CROSSING AT MALL DR	TRS-11	2011
BARNES CROSSING AT US-45 SB RAMP	TRS-12	2012
BARNES CROSSING AT US-45 NB RAMP	TRS-13	2013
BARNES CROSSING AT CROSS CREEK DR	TRS-14	2014
DETAIL OF TRAFFIC SIGNAL HEADS, TRAFFIC SIGNAL SIGNS, AND GENERAL NOTES	TSD-1	2015
PULL BOX AND CONDUIT TRENCHING DETAILS FOR TRAFFIC SIGNAL INSTALLATION	TSD-3	2016
TYPICAL DETAILS OF CONTROLLER CABINET MOUNTINGS AND MISCELLANEOUS DETAILS	TSD-5	2017
MAST ARM AND PEDESTAL POLE DETAILS FOR TRAFFIC SIGNAL INSTALLATION	TSD-6	2018
TRAFFIC CONTROL PLAN (TYPICAL SIGNAL INSTALLATION)	TSD-7	2019
SIGN FACE DETAIL	SD-1	2020
SIGN FACE DETAIL	SD-2	2021
SIGN FACE DETAIL	SD-3	2022
ITS PLAN SHEETS (8)		
ITS GENERAL NOTES	GN-ITS	3001
ITS PLANS - SR 145 / GLOSTER ST - STA. 25+00 TO STA. 57+00	ITS-1	3002
ITS PLANS - SR 145 / GLOSTER ST - STA. 57+00 TO STA. 89+00	ITS-2	3003
ITS PLANS - SR 145 / GLOSTER ST - STA. 89+00 TO STA. 121+00	ITS-3	3004
ITS PLANS - SR 145 / GLOSTER ST - STA. 121+00 TO STA. 153+00	ITS-4	3005
ITS PLANS - SR 145 / GLOSTER ST - STA. 153+00 TO STA. 185+00	ITS-5	3006
ITS PLANS - SR 145 / GLOSTER ST - STA. 185+00 TO STA. 216+00	ITS-6	3007
ITS PLANS - BARNES CROSSING RD - STA. 304+00 TO STA. 335+00	ITS-7	3008

6/16/2017 5:38 PM DI.DGN

DATE:06/07/2017

MISSISSIPPI DEPARTMENT OF TRANSPORTATION	
DETAILED INDEX	
PROJ. NO. HSIP-2839-00(018)	
LEE COUNTY	
FILENAME: DI.DGN	
DESIGN TEAM	CHECKED
DATE	DATE



WORKING NUMBER
DI-2

SHEET NUMBER
3

GENERAL NOTES

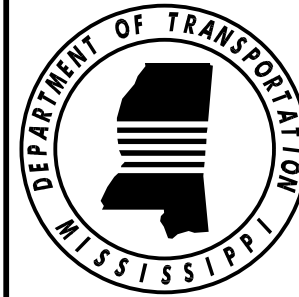
- (1) THE LOCATION AND SPACING OF SIGNS, SHOWN ON THE TRAFFIC CONTROL PLANS, ARE APPROXIMATE AND MAY BE ADJUSTED AS NECESSARY TO FIT FIELD CONDITIONS.
- (2) ALL TRAFFIC CONTROL DEVICES ON THIS PROJECT SHALL COMPLY WITH PART VI OF THE MUTCD (LATEST EDITION).
- (3) ALL PLASTIC DRUMS SHALL HAVE A BALLASTING COLLAR MADE FROM RECYCLED TRUCK TIRES OR OTHER SUITABLE MATERIAL.
- (4) 25% SHRINKAGE FACTOR USED IN THE EARTHWORK CALCULATIONS IS FOR DESIGN ESTIMATING PURPOSES ONLY.
- (5) THE CONTRACTOR SHALL BE RESPONSIBLE FOR PROTECTING EXISTING STRUCTURES SUCH AS, BUT NOT LIMITED TO, PIPES, INLETS, APRONS, AND BRIDGES FROM DAMAGE WHICH MIGHT OCCUR DURING CONSTRUCTION. THE CONTRACTOR SHALL REPLACE OR REPAIR, AS DIRECTED BY THE ENGINEER, ANY STRUCTURES DAMAGED DURING THE LIFE OF THE CONTRACT. NO PAYMENT WILL BE MADE FOR REPLACEMENT OR REPAIR OF DAMAGED ITEMS.
- (6) ALL PIPE JOINTS ARE TO BE WRAPPED IN 24-INCH WIDE TYPE V GEOTEXTILE FABRIC. ALL PICKUP HOLES SHALL BE PLUGGED AND COVERED WITH TYPE V GEOTEXTILE FABRIC, THE COST OF WHICH SHALL BE ABSORBED IN OTHER BID ITEMS.
- (7) VOIDS CREATED BY THE REMOVAL OF, BUT NOT LIMITED TO, POSTS, CONCRETE ANCHORS, AND FOOTINGS SHALL BE BACKFILLED AND TAMPED IN ACCORDANCE WITH SECTION 203 OF THE MISSISSIPPI STANDARD SPECIFICATIONS FOR ROAD AND BRIDGE CONSTRUCTION, THE COST OF WHICH WILL BE ABSORBED IN OTHER ITEMS BID.
- (8) UTILITIES ON THE DRAWINGS ARE SHOWN IN THEIR ORIGINAL LOCATION BASED UPON THE BEST INFORMATION AVAILABLE TO THE ENGINEER. UTILITIES THAT WERE FOUND TO BE IN CONFLICT WITH CONSTRUCTION HAVE BEEN RELOCATED. PERMITS ARE ON FILE WITH THE DEPARTMENT SHOWING THE APPROXIMATE LOCATION OF UTILITIES RELOCATED WITHIN THE RIGHT-OF-WAY. THE ENGINEER CAN NOT AND DOES NOT WARRANT THAT THIS INFORMATION IS COMPLETE OR ACCURATE. THE CONTRACTOR MUST COORDINATE DIRECTLY WITH THE INVOLVED UTILITY OWNERS TO HAVE UNDERGROUND UTILITY LINES FIELD LOCATED IN ADVANCE OF CONSTRUCTION.
- (9) WORK ON STRUCTURES FOR THIS PROJECT REQUIRES EXCAVATION IN THE IMMEDIATE VICINITY OF TRAFFIC AND ADJACENT PROPERTIES. THEREFORE, THE RISK OF A FAILURE OCCURRING DURING EXCAVATION REQUIRES THAT EXTREME CAUTION BE EXERCISED. THE CONTRACTOR SHALL BE RESPONSIBLE FOR PLACING WHAT BRACING, SHORING, OR GROUND SUPPORT SYSTEM THAT IS DEEMED NECESSARY TO PREVENT A FAILURE AND PROTECT THE PERSONS WORKING NEAR THE EXCAVATION, THE PUBLIC THAT MAY BE ABOVE THE EXCAVATION OR ANY STRUCTURES ADJACENT TO THE EXCAVATION. ALL COSTS FOR DESIGNING, DRAWING, AND CONSTRUCTING THE FACILITY SHALL BE INCLUDED IN THE PRICE BID FOR CONTRACT ITEMS.
- (10) SOME WORK IS REQUIRED OUTSIDE THE PROJECT LIMITS. NO ADDITIONAL COMPENSATION WILL BE MADE FOR SUCH WORK EXCEPT AS PROVIDED BY SPECIFIC PAY ITEMS INCLUDED IN THE PLANS.
- (11) WIRE FENCE BACKING WILL BE REQUIRED FOR ALL SILT FENCE. (SEE WK. NO. ECD-3)
- (12) LIST OF PUBLIC UTILITIES
 - A. MISSISSIPPI VALLEY GAS COMPANY
 - B. BELLSOUTH TELECOMMUNICATIONS, INC.
 - C. THE NORTH LEE COUNTY WATER ASSOCIATION, INC.
 - D. CITY OF TUPELO - TUPELO WATER AND LIGHT
 - E. TOMBIGBEE WATER AND LIGHT
- (13) ALL POST LENGTHS FOR SIGNS SHALL MEET REQUIREMENTS PER STANDARD DRAWING SN-4 AND SHALL BE VERIFIED IN THE FIELD PRIOR TO FABRICATION.
- (14) FLUORESCENT ORANGE SHEETING SHALL BE USED ON ALL CONSTRUCTION AND TRAFFIC CONTROL SIGNS EXCEPT FOR THOSE DESIGNATED ON THE PLANS TO BE BLACK LEGEND AND BORDER ON WHITE BACKGROUND.
- (15) SMALL AMOUNTS OF EXCAVATION MAY BE NECESSARY AT SOME OF THE SITES. THIS MATERIAL MAY BE USED AS E.S.F.E. MATERIAL AND WILL BE PAID FOR BORROW. NO E.S.F.E. MATERIAL SHALL BE REMOVED FROM THE PROJECT WITHOUT THE APPROVAL OF THE ENGINEER.
- (16) VEGETATIVE MATERIAL WILL BE REMOVED PRIOR TO PLACEMENT OF GRANULAR MATERIAL. THE COST OF WHICH SHALL BE ABSORBED IN OTHER BID ITEMS.
- (17) REMOVAL OF SOIL CEMENT AND SBST SHOULDERS SHALL BE PAID FOR AS ASPHALT PAVEMENT REMOVAL.
- (18) THE CONTRACTOR SHALL COORDINATE WITH THE CONTRACTOR FROM ADJACENT PROJECT(S) IN IMPLEMENTING THE TRAFFIC CONTROL PLAN AS DIRECTED BY THE ENGINEER. ALL CONFLICTING SIGNS SHALL BE COVERED OR REMOVED AS DIRECTED BY THE ENGINEER.
- (19) THE CONTRACTOR SHALL COVER ANY TEMPORARY TRAFFIC CONTROL SIGNS SHOWN IN THE TRAFFIC CONTROL PLAN THAT DO NOT APPLY TO THE CURRENT PHASE
- (20) EXISTING ROADWAY SIGNS THAT ARE IN CONFLICT WITH CONSTRUCTION OF THIS PROJECT SHALL BE REMOVED AND RELOCATED BY THE CONTRACTOR AS DIRECTED BY THE ENGINEER, THE COST OF WHICH SHALL BE ABSORBED IN OTHER ITEMS BID.

GENERAL NOTES

- (21) REMOVAL OF RAISED PAVEMENT MARKERS THAT ARE IN CONFLICT WITH REQUIRED CONSTRUCTION IS NOT CONSIDERED A SEPARATE PAY ITEM. COST TO BE ABSORBED IN OTHER ITEMS BID.
- (22) REMOVAL OF OBJECT MARKERS IS NOT CONSIDERED A SEPARATE PAY ITEM, AND SHALL BE ABSORBED IN OTHER ITEMS BID.
- (23) WHERE MILLING IS REQUIRED, THE CONTRACTOR SHALL PROVIDE OUTLETS IN THE EXISTING SHOULDERS AT SUFFICIENT INTERVALS TO PREVENT POOLING OR STANDING WATER ON THE MILLED SURFACE, THE COST OF WHICH SHALL BE ABSORBED IN OTHER ITEMS BID.
- (24) THE EROSION CONTROL DEVICES REFERENCED IN THESE PLANS ARE A MINIMUM REQUIREMENT. IT IS THE RESPONSIBILITY OF THE CONTRACTOR TO ENSURE THAT SILT DOES NOT LEAVE THE RIGHT OF WAY OR CONTAMINATE WATERS OF THE U. S. DURING CONSTRUCTION. THE CONTRACTOR SHALL SUBMIT AN EROSION CONTROL PLAN PRIOR TO COMMENCEMENT OF WORK AND MAINTAIN THE PLAN DURING CONSTRUCTION. ANY ADDITIONAL SILT BASINS NOT SHOWN IN THE PLANS SHALL BE INCLUDED IN THE CONTRACTOR'S EROSION CONTROL PLAN PRIOR TO SUBMITTING FOR APPROVAL.
- (25) PRIOR TO EARTHWORK OPERATIONS, THE EXISTING TOP 4" TOPSOIL IS TO BE STRIPPED AND STOCKPILED. AFTER THE GRADING OPERATIONS ARE COMPLETED, SAID TOPSOIL SHALL BE PLACED ON ALL AREAS THAT ARE NOT TO BE PAVED OR OTHERWISE PROTECTED, IN ACCORDANCE WITH SECTION 211 OF THE SPECIFICATIONS, OR THE VEGETATION SCHEDULE (SEE WK. SH. VS-1). EXISTING TOPSOIL AND ALL COSTS ASSOCIATED WITH STRIPPING, HAULING, STOCKPILING, AND PLACEMENT OF THE EXISTING TOPSOIL IS TO BE ABSORBED IN OTHER EARTHWORK ITEMS.
- (26) THE CONTRACTOR IS RESPONSIBLE FOR FIELD-VERIFICATION OF EXISTING GRADES AND MAKING ADJUSTMENTS AS NECESSARY WITH THE APPROVAL OF THE PROJECT ENGINEER.
- (27) TEMPORARY STRIPING SHALL CONFORM TO FINISHED STRIPE SPECIFICATIONS FOR ALIGNMENT, NEATNESS, AND STRAIGHTNESS.
- (28) ALL ITEMS OF WORK ASSOCIATED WITH THE INSTALLATION OF A CONSTRUCTION ENTRANCE SHALL BE ABSORBED IN OTHER ITEMS OF WORK.
- (29) ERECTION DATES ARE TO BE LEGIBLY WRITTEN IN BOLD, BLACK MARKINGS ON THE BACK OF ALL PERMANENT SIGNS WITH A PERMANENT MARKING STICK THAT IS WATERPROOF, FADE RESISTANT, AND MARKS ON WET OR DRY SURFACES.
- (30) IF COLORS ARE USED ON PLAN/PROFILE SHEETS, THEY ARE INTENDED TO VISUALLY EASE THE LOCATION OF ELEMENTS FOR USERS OF THESE DRAWINGS. ALTHOUGH THE INTENT IS TO CATEGORIZE EVERYTHING AS EITHER EXISTING OR PROPOSED, IT IS THE END USER'S RESPONSIBILITY TO ENSURE ALL ELEMENTS ARE INTERPRETED CORRECTLY REGARDLESS OF COLOR.
- (31) ALL ADDENDA TO THESE PLANS WILL BE POSTED TO WWW.MDOT.MS.GOV UNDER THE PROPOSAL ADDENDA COLUMN. BIDDERS ARE ADVISED THAT HARD COPIES OF ANY ADDENDA FOR THIS PROJECT WILL NOT BE MAILED. IT IS THE BIDDER'S RESPONSIBILITY TO CHECK AND SEE IF ANY ADDENDA HAVE BEEN POSTED FOR THIS PROJECT.
- (32) CURB AND GUTTER VERTICAL DIMENSIONS SHOWN IN THE DETAIL DRAWINGS ARE FOR A CURB IN THE "CATCH" CONFIGURATION AND SHALL BE CONSIDERED TO BE MINIMUM DIMENSIONS. THE DIMENSIONS MAY BE MODIFIED AS NECESSARY FOR "SPILL" CURB AND GUTTER, BUT SHALL NOT BE LESS THAN THE MINIMUM SHOWN.
- (33) THE COST FOR REMOVAL OF ALL HEADWALLS AND WINGWALLS (PIPES, BOX CULVERTS, BOX BRIDGES) SHALL BE ABSORBED IN OTHER ITEMS BID.
- (34) THE CONTRACTOR SHALL BE RESPONSIBLE FOR MAINTAINING AND RELOCATING MAIL BOXES AS NECESSARY TO MAINTAIN CONTINUOUS MAIL SERVICE THROUGHOUT THE LIFE OF THE PROJECT, THE COST OF WHICH SHALL BE ABSORBED IN OTHER ITEMS BID.
- (35) BIDDERS BE ADVISED, THIS SET OF PLANS IS IMPLEMENTING PAY ITEMS FROM THE 2017 STANDARD DRAWINGS AND MISSISSIPPI STANDARD SPECIFICATIONS FOR ROAD AND BRIDGE CONSTRUCTION AND IS UTILIZING THE CURRENT 1998 VERSION OF THE ROADWAY DESIGN STANDARD DRAWINGS. IF ANY DISCREPANCIES ARE FOUND BETWEEN THE REFERENCE TO PAY ITEMS IN THE 1998 STANDARD DRAWINGS AND THE 2017 PAY ITEMS, THEN IT WILL BE UNDERSTOOD THAT THE 2017 PAY ITEMS WILL BE USED AND PAID FOR AS IS LISTED IN THE SUMMARY OF QUANTITIES.

STATE	PROJECT NO.
MISS.	HSIP-2839-00(018)

6/16/2017 5:38 PM GN-1.DGN

		MISSISSIPPI DEPARTMENT OF TRANSPORTATION	
		GENERAL NOTES	
			
		PROJ. NO. HSIP-2839-00(018) WORKING NUMBER LEE COUNTY GN-1	
		FILENAME: GN-1.DGN SHEET NUMBER 5	
	DATE	DESIGN TEAM	GS&P
	BY	CHECKED	DATE