

SECTION 905 -- PROPOSAL (CONTINUED)

I (We) hereby certify by digital signature and electronic submission via Bid Express of the Section 905 proposal below, that all certifications, disclosures and affidavits incorporated herein are deemed to be duly executed in the aggregate, fully enforceable and binding upon delivery of the bid proposal. I (We) further acknowledge that this certification shall not extend to the bid bond or alternate security which must be separately executed for the benefit of the Commission. This signature does not cure deficiencies in any required certifications, disclosures and/or affidavits. I (We) also acknowledge the right of the Commission to require full and final execution on any certification, disclosure or affidavit contained in the proposal at the Commission's election upon award. Failure to so execute at the Commission's request within the time allowed in the Standard Specifications for execution of all contract documents will result in forfeiture of the bid bond or alternate security.

Bidder acknowledges receipt of and has added to and made a part of the proposal and contract documents the following addendum (addenda):

ADDENDUM NO. <u> 1 </u>	DATED <u> 10/17/2017 </u>	ADDENDUM NO. <u> </u>	DATED <u> </u>
ADDENDUM NO. <u> </u>	DATED <u> </u>	ADDENDUM NO. <u> </u>	DATED <u> </u>
ADDENDUM NO. <u> </u>	DATED <u> </u>	ADDENDUM NO. <u> </u>	DATED <u> </u>

Number	Description
1	Revised or Added Plan Sheet Nos. 2, & 45; Amendment EBS Download Required.

TOTAL ADDENDA: 1
(Must agree with total addenda issued prior to opening of bids)

Respectfully Submitted,

DATE _____

Contractor

BY _____
Signature

TITLE _____

ADDRESS _____

CITY, STATE, ZIP _____

PHONE _____

FAX _____

E-MAIL _____

(To be filled in if a corporation)

Our corporation is chartered under the Laws of the State of _____ and the names, titles and business addresses of the executives are as follows:

_____ President	_____ Address
_____ Secretary	_____ Address
_____ Treasurer	_____ Address

The following is my (our) itemized proposal.

NH-0009-01(137)/ 107604301000
Wilkinson County(ies)

Revised 01/26/2016

ADDENDUM

STATE PROJECT NO.
MISS. NH-0009-01(137)

DESCRIPTION OF SHEET

REV. DATE WKG. NO. SH. NO.

DESCRIPTION OF SHEET

REV. DATE WKG. NO. SH. NO.

TITLE AND LAYOUT SHEET (1)

DETAILED INDEX (1)

GENERAL NOTES (1)

TYPICAL SECTION SHEETS (3)

Typical Section-Mainline 4 Lane Section
Typical Section-Mainline 4 Lane Section (MILL & INLAY AREAS)
Typical Section-Mainline 4 Lane Section (FAILED AREAS)

QUANTITY SHEETS (5)

Summary of Estimated Quantities
Estimated Quantities for Traffic Control Signing
Estimated Quantities for Milling AND Leveling
Estimated Quantities for Asphalt and Granular Materials
Estimated Base Failure Repair Quantities

PLAN & PROFILE SHEETS (24)

STA. 10+00	TO STA. 40+00	WK3 LT.	12
STA. 10+00	TO STA. 40+00	WK3 RT.	13
STA. 40+00	TO STA. 70+00	WK4 LT.	14
STA. 40+00	TO STA. 70+00	WK4 RT.	15
STA. 70+00	TO STA. 100+00	WK5 LT.	16
STA. 70+00	TO STA. 100+00	WK5 RT.	17
STA. 100+00	TO STA. 130+00	WK6 LT.	18
STA. 100+00	TO STA. 130+00	WK6 RT.	19
STA. 130+00	TO STA. 160+00	WK7 LT.	20
STA. 130+00	TO STA. 160+00	WK7 RT.	21
STA. 160+00	TO STA. 190+00	WK8 LT.	22
STA. 160+00	TO STA. 190+00	WK8 RT.	23
STA. 190+00	TO STA. 220+00	WK9 LT.	24
STA. 190+00	TO STA. 220+00	WK9 RT.	25
STA. 220+00	TO STA. 250+00	WK10 LT.	26
STA. 220+00	TO STA. 250+00	WK10 RT.	27
STA. 250+00	TO STA. 280+00	WK11 LT.	28
STA. 250+00	TO STA. 280+00	WK11 RT.	29
STA. 280+00	TO STA. 310+00	WK12 LT.	30
STA. 280+00	TO STA. 310+00	WK12 RT.	31
STA. 310+00	TO STA. 338+22.13(AH)	WK13 LT.	32
STA. 310+00	TO STA. 338+22.13(AH)	WK13 RT.	33
STA. 338+22.13(AH)	TO STA. 356+10	WK14 LT.	34
STA. 338+22.13(AH)	TO STA. 356+10	WK14 RT.	35

SPECIAL DESIGN SHEETS (11)

DETAIL OF CONSTRUCTION SIGNING
RUMBLE STRIP FOR 4-LANE HIGHWAYS
TRAFFIC CONTROL DETAILS (DRUM PLACEMENT & SHOULDER CLOSURE)
TYPICAL PAVEMENT MARKING DETAIL FOR MEDIAN CROSSOVERS

2-WAY CLEAR RAISED PAVEMENT MARKERS PLACED ON SIDE ROADS (4-LANE)
DETAIL FOR CURB AND ISLAND STRIPING

TRAFFIC CONTROL PLAN FOR POSTED SPEED LIMIT OF 65 OR 70 MPH
(INTERSTATE AND OTHER 4-LANE DIVIDED HIGHWAYS) (MEDIAN LANE OR
OUTSIDE LANE CLOSER) (EXTENDED PERIOD)

TRAFFIC CONTROL PLAN FOR POSTED SPEED LIMIT OF 65 OR 70 MPH
(INTERSTATE AND OTHER 4-LANE DIVIDED HIGHWAYS) (MEDIAN LANE OR
OUTSIDE LANE CLOSER) (WORK DAY ONLY)

HIGHWAY SIGN AND BARRICADE DETAILS FOR CONSTRUCTION PROJECTS

TRAFFIC RECORDER WIM KISTLER SYSTEM ON 4-LANE DIVIDED HIGHWAYS

PAVEMENT MARKING DETAIL @ CORE AREA

STANDARD DRAWINGS (8)

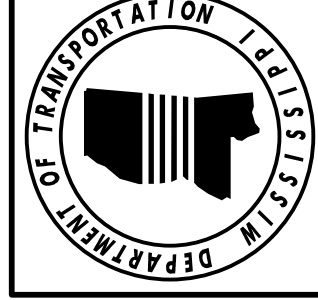
PAVEMENT MARKING DETAILS FOR 2-LANE AND 4-LANE DIVIDED HIGHWAYS
PAVEMENT MARKING DETAILS FOR 4-LANE AND 5-LANE UNDIVIDED HIGHWAYS
PAVEMENT MARKING LEGEND DETAILS
PAVEMENT MARKING LEGEND DETAILS
TYPICAL CROSSOVER DELINEATION

TRAFFIC CONTROL PLAN MOBILE OPERATIONS MULTILANE ROADS AND TWO LANE ROADS
TRAFFIC CONTROL PLANS UNEVEN PAVEMENT DETAILS
TEMPORARY STRIPING FOR TRAFFIC CONTROL 2-LN. AND 4-LN DIVIDED HIGHWAYS.

TOTAL SHEETS (54)

DISTRICT 7			
PS & E PLANS-DATE 08/03/2017			
FMS CON. # 107604/301000			
REVISIONS			
DATE	SHEET NO.	BY	
9/18/17	1,2,5,7,8	MA	
9/20/17	7	MA	
10/12/17	45	RCC	

BY	DATE
CB	
REVISION	
REVISED SPECIAL DESIGN SHEETS	
REVISED	
DESIGN TEAM	DATE
FILENAME: \02\INDEX#1.DGN	CHECKED
PROJ. NUM.: NH-0009-01(137)	SHEET NUMBER
COUNTY: WILKINSON	WORKING NUMBER
	DI-1
	2



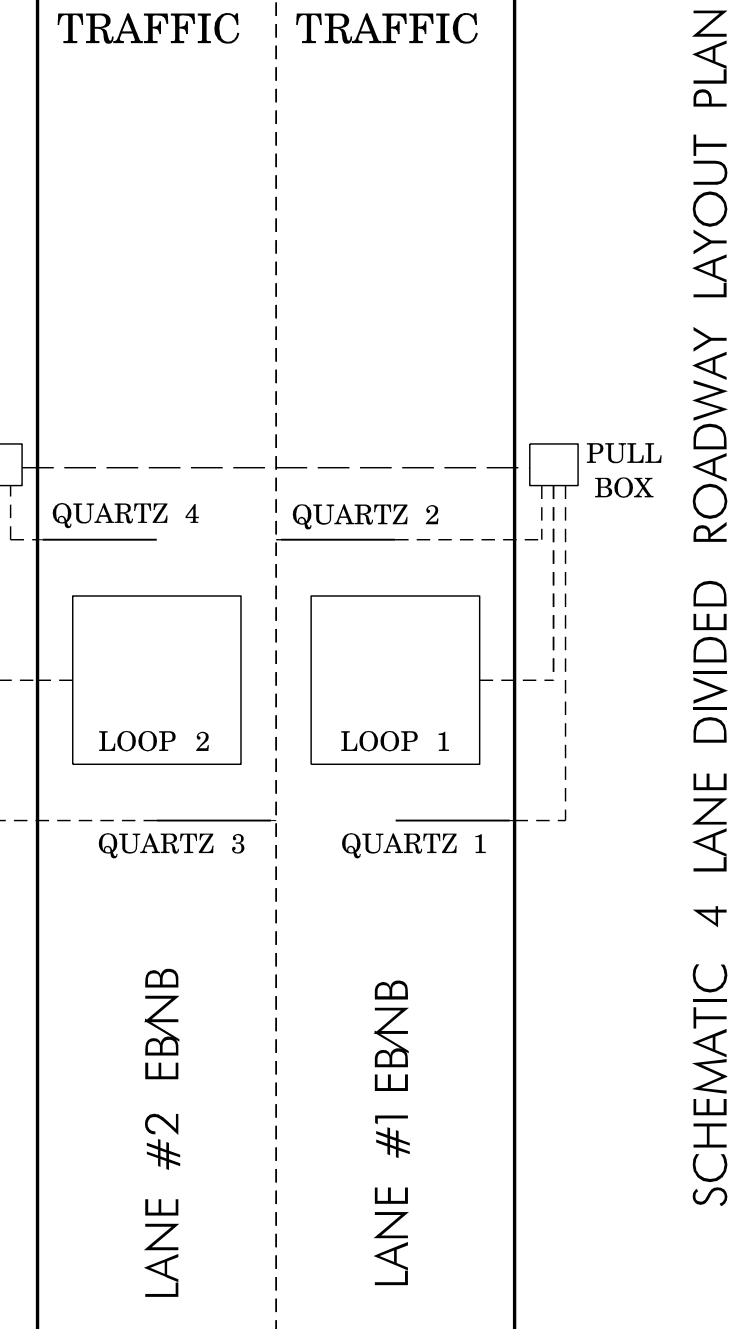
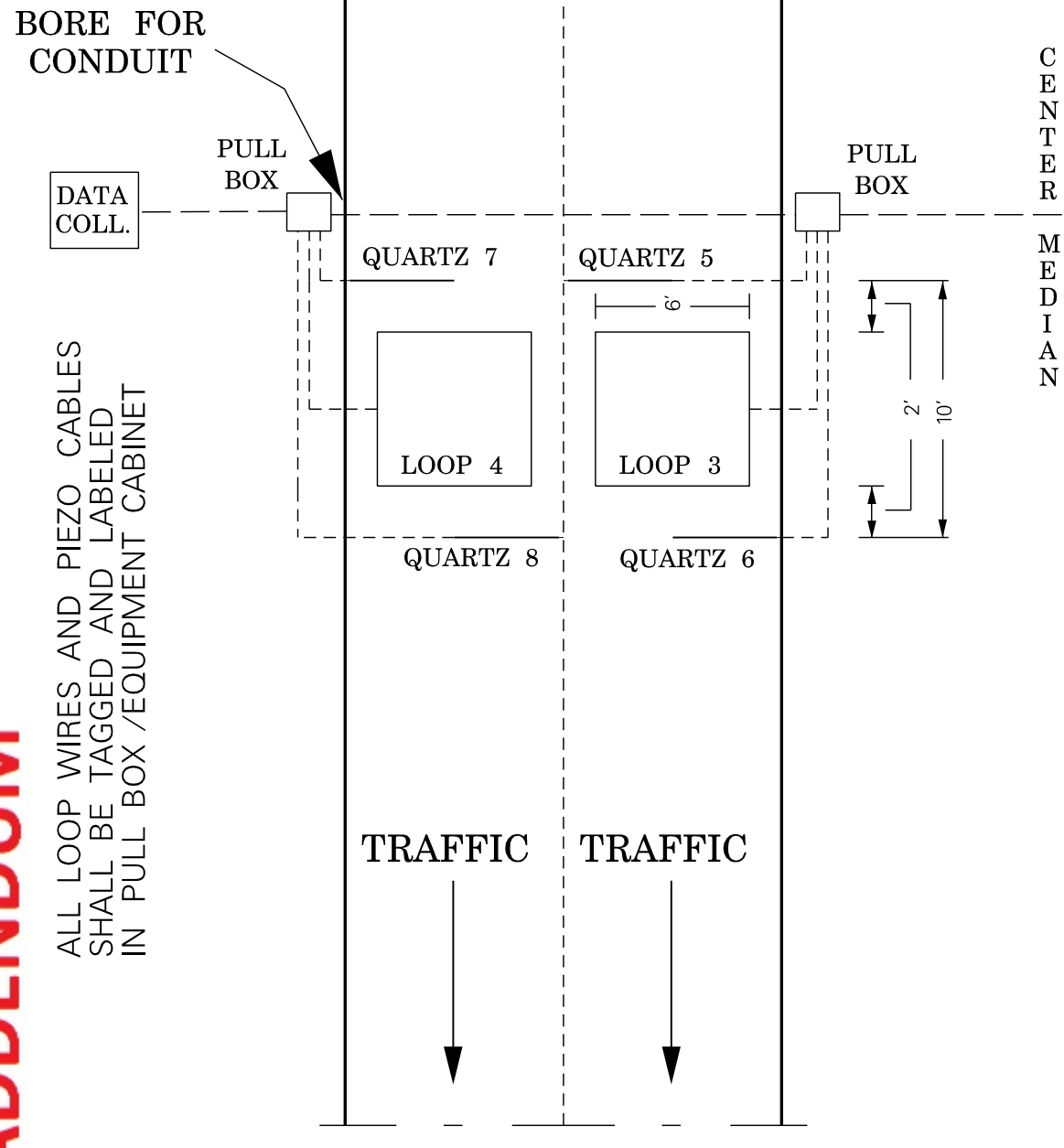
DETAILED INDEX

MISSISSIPPI DEPARTMENT OF TRANSPORTATION

DETAILED INDEX

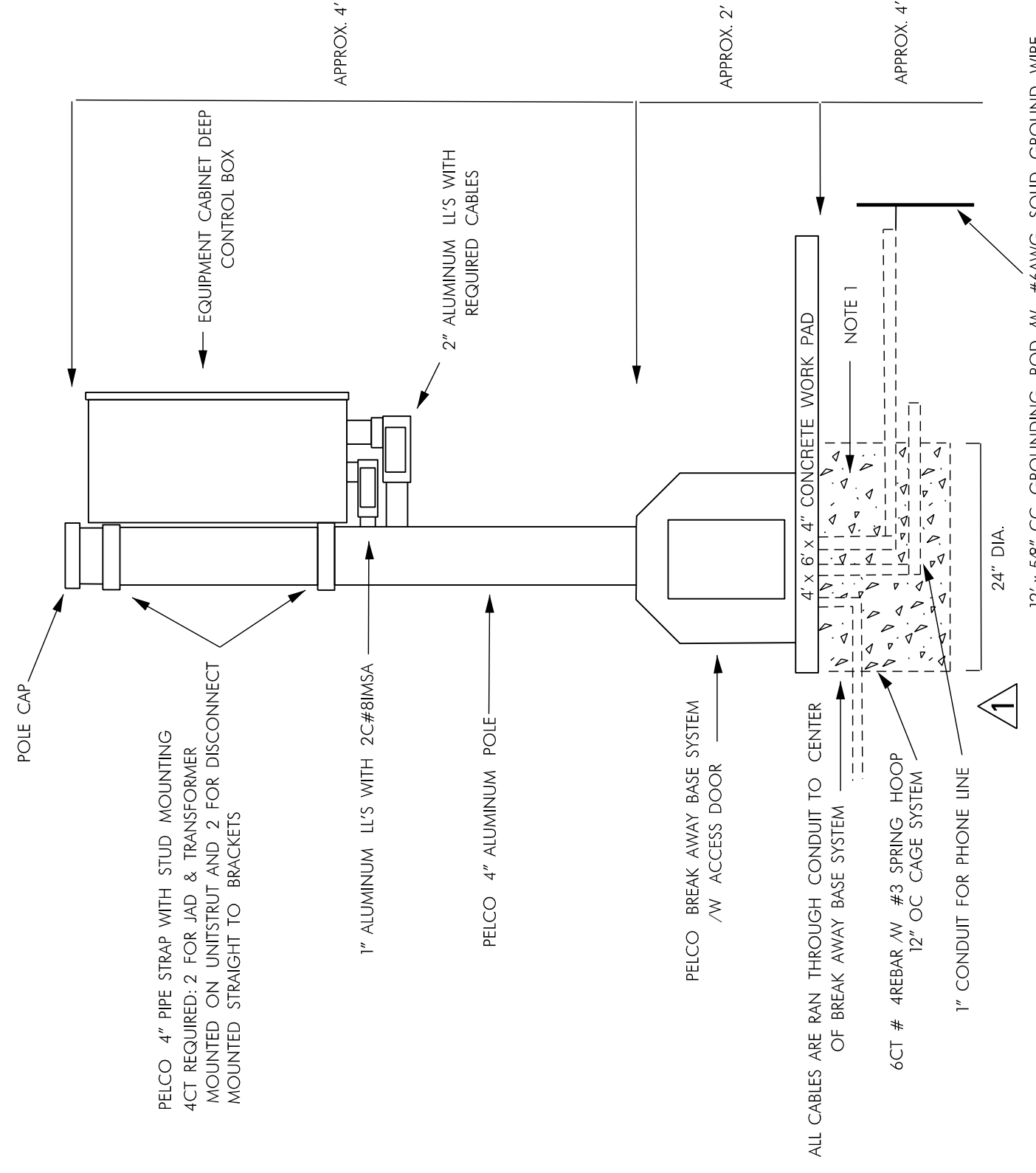
ADDENDUM

ALL LOOP WIRES AND PIEZO CABLES SHALL BE TAGGED AND LABELED IN PULL BOX /EQUIPMENT CABINET



SCHMATIC 4 LANE DIVIDED ROADWAY LAYOUT PLAN

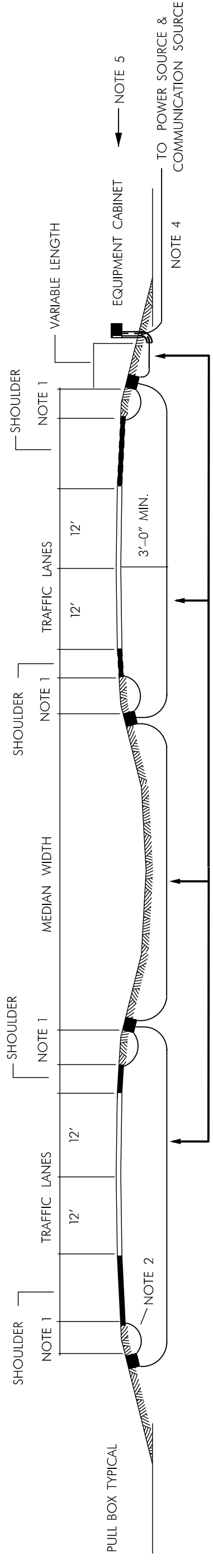
NOT TO SCALE



DETAIL OF POST & EQUIPMENT CABINET

NOT TO SCALE

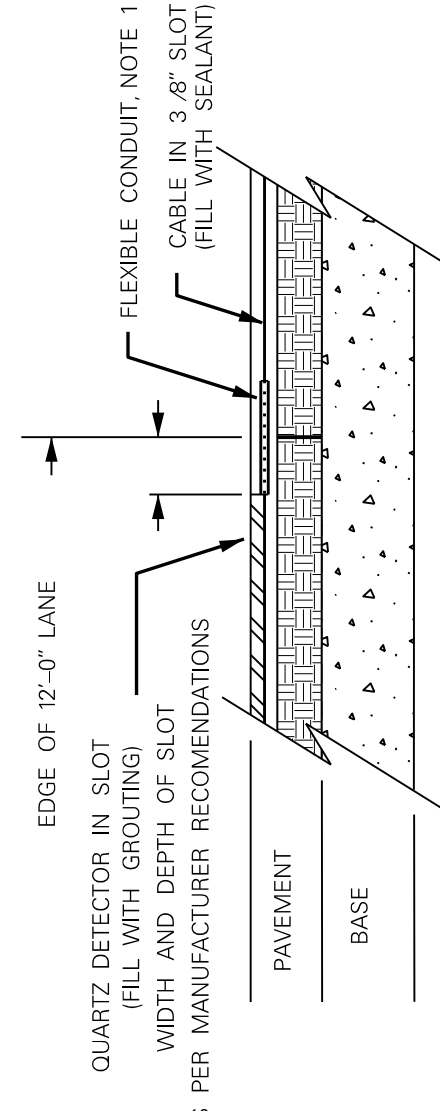
1. BACKFILL WITH CONCRETE AS APPROVED BY PROJECT ENGINEER.



TYPICAL SECTION FOR CONDUIT PLACEMENT

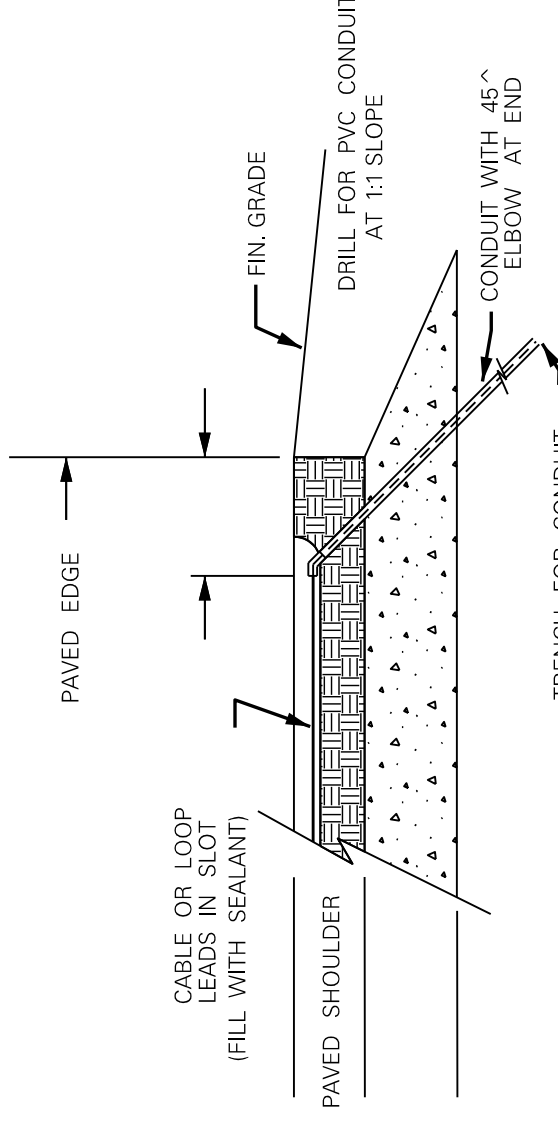
NOT TO SCALE

1. LOCATE PULL BOXES 15'-0" MIN. FROM SHOULDER UNLESS UNUSUAL SITE CONDITIONS EXIST. THE PULL BOX LOCATION & EQUIPMENT CABINET LOCATION MUST BE APPROVED BY PROJECT ENGINEER.
2. 3/4" DIA SCH 40 PVC CONDUIT FOR EACH LOOP OR SENSOR TO PULL BOX CONDUIT BURIED AT 30" AT THE SHOULDER.
3. 2" DIA. SCH 80 PVC.
4. BURIED CABLE TO POWER SOURCE AND COMMUNICATION SOURCE.
5. LOCATION OF EQUIPMENT CABINET AND LANE WIDTH WILL VARY DEPENDING ON SITE.
6. ALL SENSOR WIRE AND LOOP WIRE MUST BE PLACED IN CONDUIT FROM PAVEMENT TO EQUIPMENT CABINET. SENSOR WIRE SHALL BE A CONTINUOUS RUN WITH OUT ANY SPLICING FROM THE SENSOR TO THE EQUIPMENT CABINET.



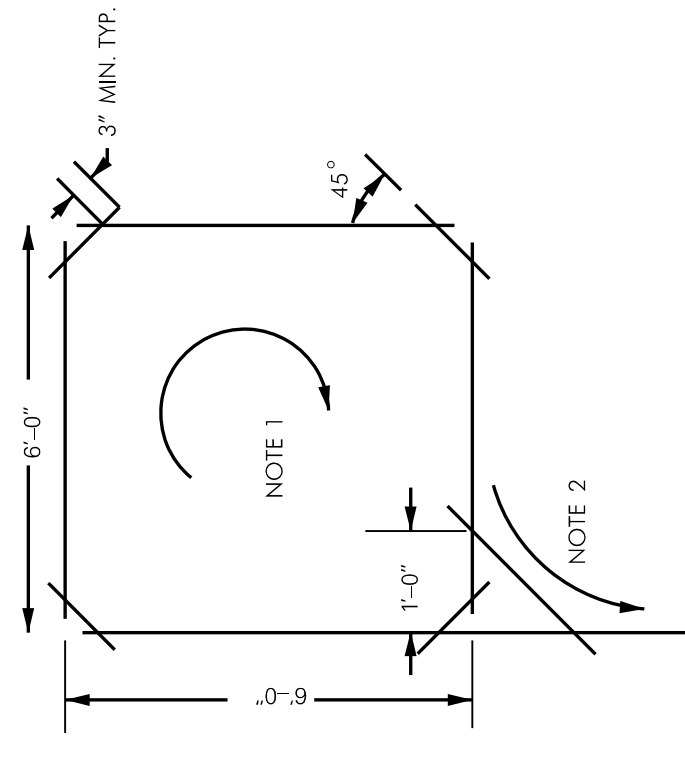
DETAIL AT QUARTZ DETECTOR

NOT TO SCALE



DETAIL AT CONDUIT END

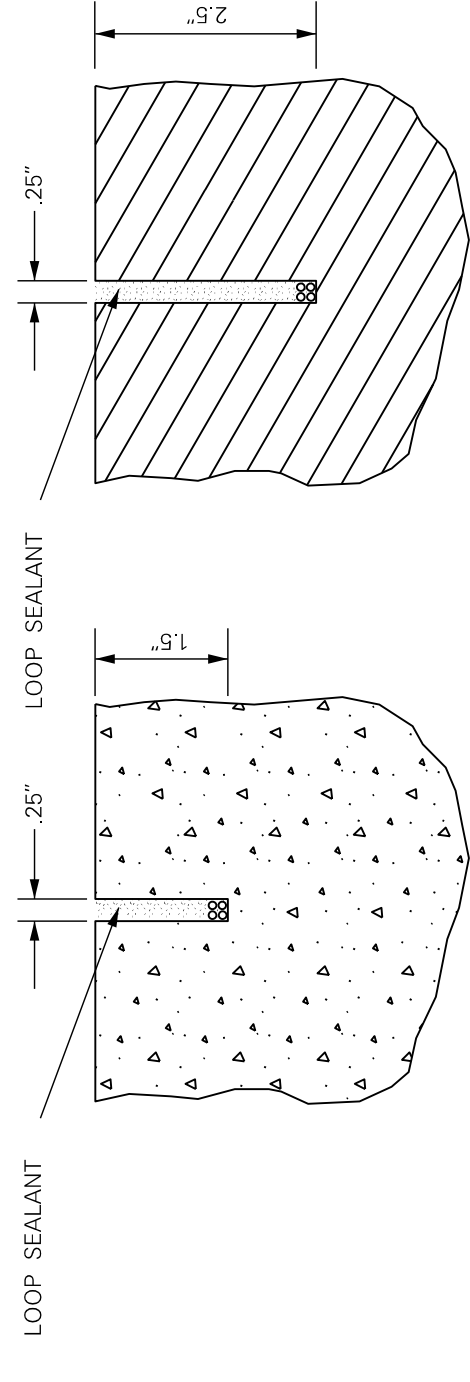
NOT TO SCALE



DETAIL PLAN OF LOOP SLOTS

NOT TO SCALE

1. INSTALL WIRE TURNS THE SAME (CLOCKWISE) DIRECTION.
2. LOOP LEAD WIRE EXIT FROM LAST TURN.
3. ALL LOOPS TO INCLUDE 4 TURNS OF #14AWG WIRE.
4. DIMENSIONAL TOLERANCE FOR LOOP LENGTH, SPACING AND DETECTOR LOCATION: 1/2".



CONCRETE.

ASPHALT.

DETAIL OF CABLE SLOT

NOT TO SCALE

SPECIFICATIONS

- ALL WORK SHALL CONFORM TO S.P. 907-688-A.
- INSTALLATION NOTES
1. EXACT LOCATION TO BE VERIFIED IN FIELD BY STATE PLANNING ENGINEER.
 2. SATISFACTORY OPERATION OF ALL COMPONENTS SHALL BE VERIFIED BY STATE PLANNING ENGINEER.

DATE	BY	REVISION
0-12-11	AL	ALTERED DETAIL

MISSISSIPPI DEPARTMENT OF TRANSPORTATION
TRAFFIC RECORDER
WIM KISTLER SYSTEM
 4 LANE DIVIDED ROADWAY LAYOUT PLAN

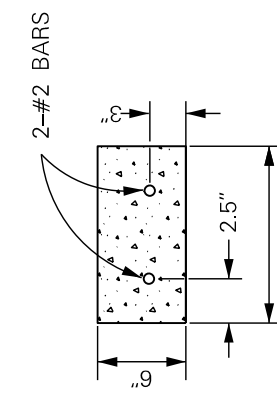
COUNTY: WILKINSON
 PROJ. NO.: NH-0009-01(137)
 FILENAME: .GJDN
 DESIGN TEAM: _____
 CHECKED: _____
 DATE: _____

WORKING NUMBER: TRS-1
 SHEET NUMBER: 45

PULL BOX DETAILS

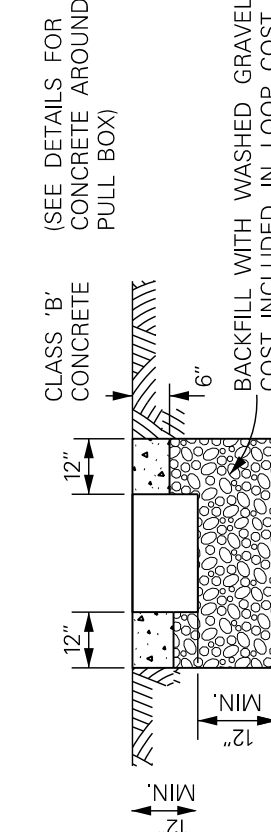
NOT TO SCALE

PULL BOXES SHALL CONFORM TO 722.06 (e) TYPE 2 OF THE STANDARD SPECIFICATIONS

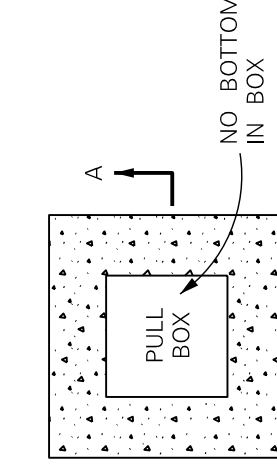


DETAIL OF CONCRETE AROUND PULL BOX

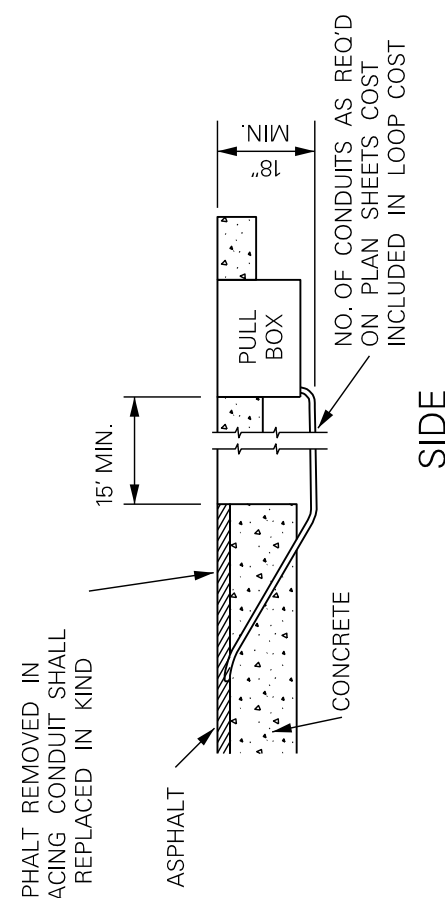
NOT TO SCALE



SECTION A-A



TOP



SIDE

ASPHALT REMOVED IN PULL BOX AREA SHALL BE REPLACED IN KIND

ASPHALT

CONCRETE

NO. OF CONDUITS AS RECD ON PLAN SHEETS COST INCLUDED IN LOOP COST

NO. OF CONDUITS AS RECD ON PLAN SHEETS COST INCLUDED IN LOOP COST

NO. OF CONDUITS AS RECD ON PLAN SHEETS COST INCLUDED IN LOOP COST

NO. OF CONDUITS AS RECD ON PLAN SHEETS COST INCLUDED IN LOOP COST

NO. OF CONDUITS AS RECD ON PLAN SHEETS COST INCLUDED IN LOOP COST

NO. OF CONDUITS AS RECD ON PLAN SHEETS COST INCLUDED IN LOOP COST

NO. OF CONDUITS AS RECD ON PLAN SHEETS COST INCLUDED IN LOOP COST

NO. OF CONDUITS AS RECD ON PLAN SHEETS COST INCLUDED IN LOOP COST

NO. OF CONDUITS AS RECD ON PLAN SHEETS COST INCLUDED IN LOOP COST

NO. OF CONDUITS AS RECD ON PLAN SHEETS COST INCLUDED IN LOOP COST

NO. OF CONDUITS AS RECD ON PLAN SHEETS COST INCLUDED IN LOOP COST

NO. OF CONDUITS AS RECD ON PLAN SHEETS COST INCLUDED IN LOOP COST

NO. OF CONDUITS AS RECD ON PLAN SHEETS COST INCLUDED IN LOOP COST

NO. OF CONDUITS AS RECD ON PLAN SHEETS COST INCLUDED IN LOOP COST