

1st O.REV.

GENERAL INDEX

INCLUDED THIS PROJECT	BEGIN WITH SHEET
<input checked="" type="checkbox"/> ROADWAY	1
<input checked="" type="checkbox"/> PERMANENT SIGNS	1001
<input checked="" type="checkbox"/> TRAFFIC SIGNALS	2001
<input type="checkbox"/> ITS COMPONENTS	3001
<input type="checkbox"/> LIGHTING	4001
<input type="checkbox"/> (RESERVED)	5001
<input checked="" type="checkbox"/> ROADWAY STANDARD DWGS ..	6001
<input type="checkbox"/> BRIDGE STANDARD DWGS	7001
<input type="checkbox"/> BRIDGE	8001
<input type="checkbox"/> CROSS SECTIONS	9001

STATE OF MISSISSIPPI

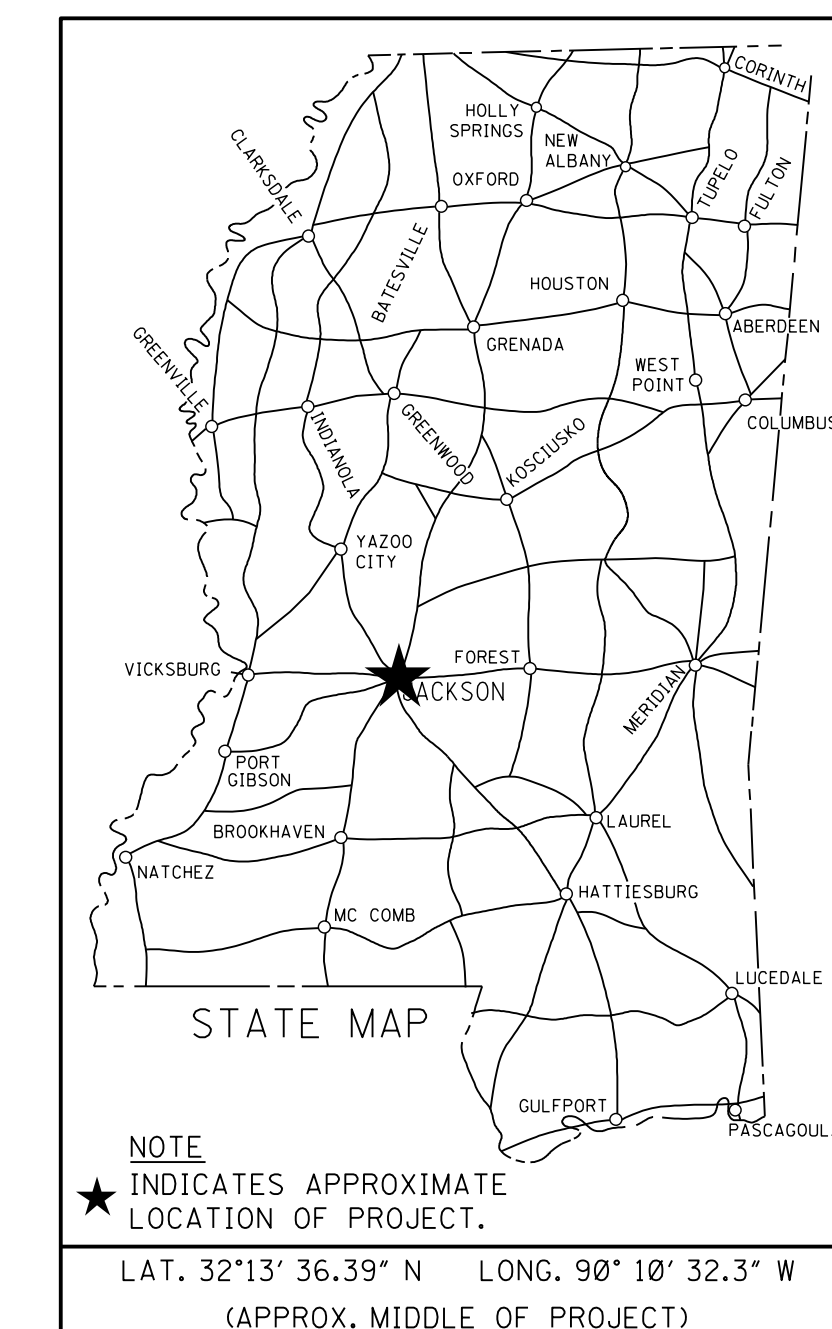
MISSISSIPPI DEPARTMENT OF TRANSPORTATION

PLAN AND PROFILE OF PROPOSED STATE STREET IMPROVEMENTS PROJECT NO. SP-0250-00(048)

STATE STREET AND E. WOODROW WILSON AVE. HINDS COUNTY

FMS CONST. 106330/302000

STATE	PROJECT NUMBER
MISSISSIPPI	SP-0250-00(048)



NOTE
★ INDICATES APPROXIMATE LOCATION OF PROJECT.
LAT. 32°13' 36.39" N LONG. 90°10' 32.3" W
(APPROX. MIDDLE OF PROJECT)

BRIDGE STRUCTURES REQ'D.

NONE

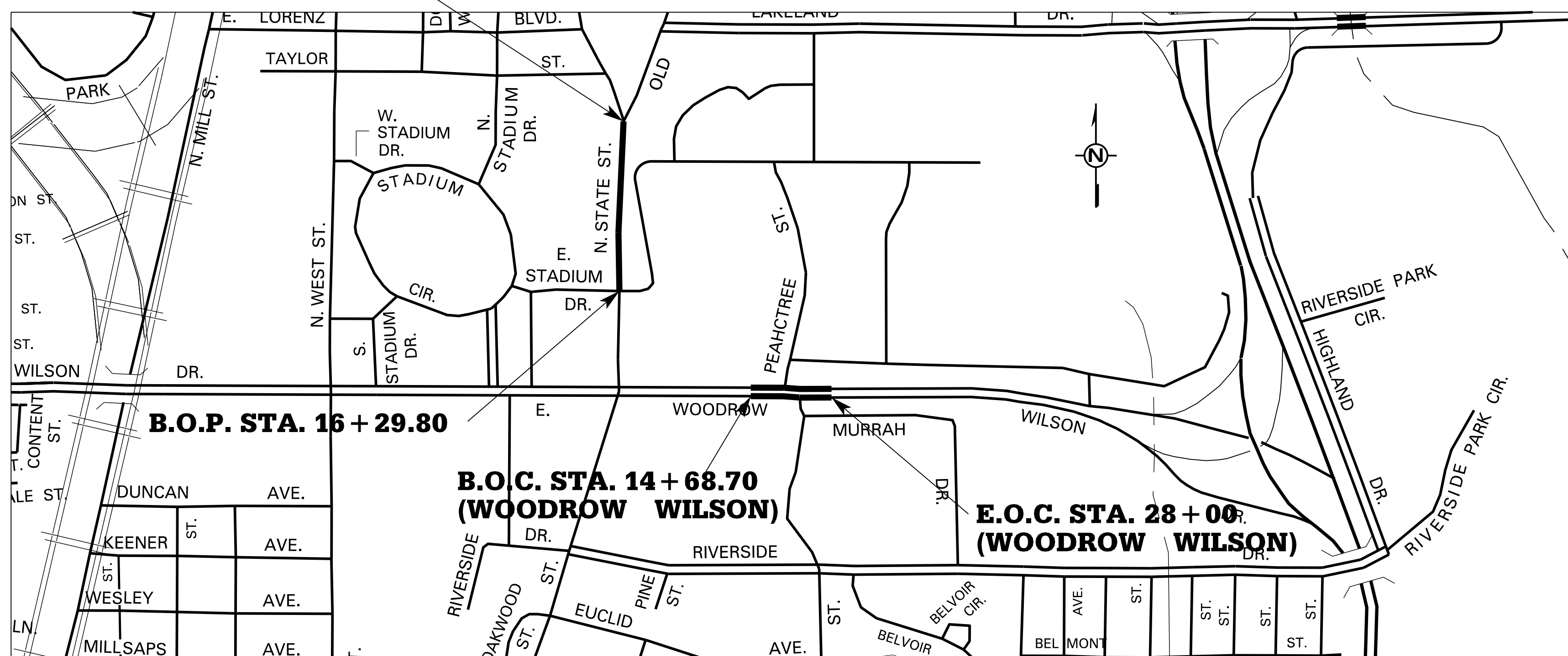
BOX BRIDGES REQ'D.

NONE

E.O.P. STA. 28 + 23.54

SCALES

PLAN	1 IN. = 20 FT.
PROFILE	HOR. 1 IN. = 20 FT.
	VERT. 1 IN. = 5 FT.
LAYOUT	1 IN. = xxx FT.



DESIGN CONTROL

45 MPH = V (SPEED DESIGN)

ADT (N/A) = N/A ; ADT (N/A) = N/A
DHV = N/A ; D = N/A % T = N/A %

PERMITS ACQUIRED BY MDOT

	WETLANDS AND WATERS PERMITS	
	WATERS	WETLANDS
NATIONWIDE #14	<input checked="" type="checkbox"/>	<input checked="" type="checkbox"/>
NATIONWIDE (OTHER)	<input checked="" type="checkbox"/>	<input checked="" type="checkbox"/>
GENERAL	<input checked="" type="checkbox"/>	<input checked="" type="checkbox"/>
INDIVIDUAL (404)	<input checked="" type="checkbox"/>	<input checked="" type="checkbox"/>
STORMWATER PERMIT	<input checked="" type="checkbox"/>	
Y	REQUIRED CNCI SUBMITTED BY MDOT (DISTURBED AREA = 5 ACRES)	
S	REQUIRED SCNOI TO BE SUBMITTED BY CONTRACTOR (1 TO 4.99 ACRES)	
N	NO STORMWATER PERMIT REQUIRED (<1 ACRE)	
APPROVED BY:		

GPS CONTROL NOTES

HORIZONTAL DATUM: NAD83(2011) (EPOCH 2010)MS WEST ZONE(US SURVEY FEET)

HORIZONTAL MONUMENT	NORTH	EAST
DJ2349 VIC6	1,030,281.25	2,115,494.00
DF7054 SHIS	854,804.150	1,886,019.820
DH5002 TALL	1,055,961.346	2,034,331.794

VERTICAL DATUM: NAVD (US SURVEY FEET)

VERTICAL MONUMENT	ELEVATION
DJ2349 VIC6	190.728
DF7054 SHIS	108.530
DH5002 TALL	111.17

ALL AZIMUTHS AND DISTANCES ARE GRID VALUES, US SURVEY FEET

CONVERSION VALUES	PROJECT AVERAGE
GROUND TO GRID (COMBINED) FACTOR	0.99993917
GRID TO GEODETIC AZIMUTH	0.08778849°

ALL SURVEY DATA OBTAINED FROM MULTIPLE OPUS SOLUTIONS

EQUATIONS

NONE

LENGTH DATA

LENGTH OF ROADWAY	1857.95 FT.	0.35 MI.
LENGTH OF BRIDGES	FT.	MI.
LENGTH OF PROJECT (NET)	MI.	
LENGTH OF EXCEPTIONS	FT.	MI.
LENGTH OF PROJECT (GROSS)		0.35 MI.

EXCEPTIONS

NONE



UMMC PROJECT NO. 2085104

P S & E DATE: 11/21/2016

APPROVED:

DEPUTY EXECUTIVE DIRECTOR / CHIEF ENGINEER

EXECUTIVE DIRECTOR



11/2/2017 1:24:40PM FILE STATE_STREET_I.MPROV.DGN TITLE ROADWAY DESIGN DIVISION MISSISSIPPI DEPARTMENT OF TRANSPORTATION

1st O.REV.

STATE	PROJECT NO.
MISS.	SP-0250-00(048)

DESCRIPTION OF SHEET	WKG. NO.	SH. NO.
TITLE SHEET		1
DETAILED INDEX	DI-1	2
GENERAL NOTES	GN-1	3
TYPICAL SECTION SHEETS (6)		
TYPICAL SECTIONS	TS-1	4
TYPICAL SECTIONS	TS-2	5
TYPICAL SECTIONS	TS-3	6
TYPICAL SECTIONS	TS-4	7
TYPICAL SECTIONS	TS-5	8
TYPICAL SECTIONS	TS-6	9
QUANTITY SHEETS (12)		
SUMMARY OF QUANTITIES	SQ-1	10
SUMMARY OF QUANTITIES	SQ-2	11
SUMMARY OF QUANTITIES	SQ-3	12
SUMMARY OF QUANTITIES	SQ-4	13
ESTIMATED QUANTITIES - DRAINAGE STRUCTURES, JUNCTION BOXES	EQ-1	14
ESTIMATED QUANTITIES - REMOVAL ITEMS	EQ-2	15
ESTIMATED QUANTITIES - CONCRETE ITEMS AND SIDEWALKS	EQ-3	16
ESTIMATED QUANTITIES - PAVEMENT MARKINGS, TEMPORARY TRAFFIC CONTROL	EQ-4	17
ESTIMATED QUANTITIES STANDARD ROADSIDE SIGN ASSEMBLIES	EQ-5	18
ESTIMATED QUANTITIES STANDARD ROADSIDE SIGNS	EQ-6	19
ESTIMATED QUANTITIES FOR TRAFFIC CONTROL SIGNS	EQ-7	20
ESTIMATED QUANTITIES TRAFFIC SIGNAL	EQ-8	21
PLAN & PROFILE SHEETS (10)		
PLAN PROFILE NORTH STATE STREET STA. 10+00 - STA 16+00	WK-3	22
PLAN PROFILE NORTH STATE STREET STA. 16+00 - STA 22+00	WK-4	23
PLAN PROFILE NORTH STATE STREET STA. 22+00 - STA 28+00	WK-5	24
PLAN PROFILE NORTH STATE STREET STA. 28+00 -EOP	WK-6	25
PLAN PROFILE WOODROW WILSON STA. 14+00 - STA 20+00	7LT	26
PLAN PROFILE WOODROW WILSON STA. 14+00 - STA 20+00	7RT	27
PLAN PROFILE WOODROW WILSON STA. 20+00 - STA. 26+00	8LT	28
PLAN PROFILE WOODROW WILSON STA. 20+00 - STA. 26+00	8RT	29
PLAN PROFILE WOODROW WILSON STA. 26+00 - STA. 32+00	9LT	30
PLAN PROFILE N. PEACHTREE ST. STA. 10+00 - STA. 13+00	WK-10	31
TRAFFIC CONTROL PLAN SHEETS (18)		
CONSTRUCTION SIGN DETAIL - STATE STREET	CSD-1	32
DETOUR LAYOUT	DL-1	33
TRAFFIC CONTROL PLAN - PHASE 1, E. WOODROW WILSON AVE., STA. 10+00 - STA. 16+00	TCD 1-1	34
TRAFFIC CONTROL PLAN - PHASE 1, E. WOODROW WILSON AVE., STA. 16+00 - STA. 22+40	TCD 1-2	35
TRAFFIC CONTROL PLAN - PHASE 1, E. WOODROW WILSON AVE., STA. 22+40 - STA. 28+80	TCD 1-3	36
TRAFFIC CONTROL PLAN - PHASE 1, E. WOODROW WILSON AVE., STA. 28+80 - STA. 29+35	TCD 1-4	37
TRAFFIC CONTROL PLAN - PHASE 2, E. WOODROW WILSON AVE., STA. 16+00 - STA. 22+40	TCD 2-1	38
TRAFFIC CONTROL PLAN - PHASE 2, E. WOODROW WILSON AVE., STA. 22+40 - STA. 28+80	TCD 2-2	39
TRAFFIC CONTROL PLAN - PHASE 3, E. WOODROW WILSON AVE., STA. 11+00 - STA. 16+00	TCD 3-1	40
TRAFFIC CONTROL PLAN - PHASE 3, E. WOODROW WILSON AVE., STA. 16+00 - STA. 22+40	TCD 3-2	41
TRAFFIC CONTROL PLAN - PHASE 3, E. WOODROW WILSON AVE., STA. 22+40 - STA. 28+80	TCD 3-3	42
TRAFFIC CONTROL PLAN - PHASE 4A, NORTH STATE STREET, STA. 10+00 - STA. 16+00	TCD 4-1	43
TRAFFIC CONTROL PLAN - PHASE 4A, NORTH STATE STREET, STA. 16+00 - STA. 22+40	TCD 4-2	44
TRAFFIC CONTROL PLAN - PHASE 4A, NORTH STATE STREET, STA. 22+40 - STA. 28+80	TCD 4-3	45
TRAFFIC CONTROL PLAN - PHASE 4B, NORTH STATE STREET, SOUTH OF WOODROW WILSON AVE.	TCD 4-4	46
TRAFFIC CONTROL PLAN - PHASE 4B, NORTH STATE STREET, STA. 10+00 - STA. 16+00	TCD 4-5	47
TRAFFIC CONTROL PLAN - PHASE 4B, NORTH STATE STREET, STA. 16+00 - STA. 22+40	TCD 4-6	48
TRAFFIC CONTROL PLAN - PHASE 4B, NORTH STATE STREET, STA. 22+40 - STA. 28+80	TCD 4-7	49

DESCRIPTION OF SHEET	WKG. NO.	SH. NO.
FORM GRADE SHEETS (4)		
FORM GRADES - NORTH STATE STREET STA. 16+00 - STA. 22+00	FG-1	50
FORM GRADES - NORTH STATE STREET STA. 22+00 - STA. 28+23.77	FG-2	51
FORM GRADES - E. WOODROW WILSON AVE. STA. 14+00 - STA. 20+00	FG-3	52
FORM GRADES - E. WOODROW WILSON AVE. STA. 20+00 - STA. 25+00	FG-4	53
DETAIL LAYOUT SHEETS (5)		
GEOMETRIC LAYOUT - NORTH STATE STREET STA. 16+00 - STA. 22+00	ID-1	54
GEOMETRIC LAYOUT - NORTH STATE STREET STA. 22+00 - STA. 28+24	ID-2	55
GEOMETRIC LAYOUT - E. WOODROW WILSON AVE. STA. 14+00 - STA. 20+00	ID-3	56
GEOMETRIC LAYOUT - E. WOODROW WILSON AVE. STA. 20+00 - STA. 26+00	ID-4	57
GEOMETRIC LAYOUT - N. PEACHTREE STREET STA. 10+00 - 13+32	ID-5	58
PAVEMENT MARKING SHEETS (9)		
PAVEMENT MARKING DETAILS - NORTH STATE STREET (SOUTH OF WOODROW WILSON)	PMD-1	59
PAVEMENT MARKING DETAILS - NORTH STATE STREET STA. 10+00 - STA. 16+00	PMD-2	60
PAVEMENT MARKING DETAILS - NORTH STATE STREET STA. 16+00 - STA. 26+60	PMD-3	61
PAVEMENT MARKING DETAILS - NORTH STATE STREET STA. 26+60 - 29+00	PMD-4	62
PAVEMENT MARKING DETAILS - WOODROW WILSON AVE. STA. 13+20 - STA. 19+80	PMD-5	63
PAVEMENT MARKING DETAILS - WOODROW WILSON AVE. STA. 19+80 - STA. 26+20	PMD-6	64
PAVEMENT MARKING DETAILS - S. PEACHTREE STREET (SOUTH OF WOODROW WILSON)	PMD-7	65
PAVEMENT MARKING DETAILS - E. WOODROW WILSON AVE. STA. 26+20 - STA. 28+00	PMD-8	66
PAVEMENT MARKING DETAILS - N. PEACHTREE STREET STA. 11+60 - 13+20	PMD-9	67
SPECIAL DESIGN SHEETS (12)		
VEGETATION SCHEDULE	VS-1	68
OVERHEAD SIGNING PLAN - STATE STREET	OSP-1	69
STREET NAME SIGN	SNS-1	70
MISCELLANEOUS DETAILS	MSD-1	71
INLET MODIFICATION DETAILS	IMD-1	72
CURB RAMPS- RAMP DESIGN ELEMENTS, SHEET 1 OF 4	SDCCR-1	73
CURB RAMPS - PLACEMENT DETAILS, SHEET 2 OF 4	SDCCR-2	74
CURB RAMPS - PLACEMENT DETAILS, SHEET 3 OF 4	SDCCR-3	75
CURB RAMPS - DETECTABLE WARNING DETAILS, SHEET 4 OF 4	SDCCR-4	76
DRIVEWAYS, CURB & GUTTER & SIDEWALK	SDSD-1	77
TRAFFIC CONTROL PLAN FOR POSTED SPEED LIMIT LESS THAN 65 MPH	SDTCP-3	78
TRAFFIC CONTROL DETAILS DRUM PLACEMENT AND SHOULDER CLOSURE	TCP-SC	79
EROSION CONTROL SHEETS (23)		
DETAILS OF TYPICAL DITCH TREATMENTS	DT-1	80
TYPICAL TEMPORARY EROSION / SEDIMENT CONTROL APPLICATIONS	ECD-1	81
DETAILS OF SEDIMENT BARRIER APPLICATIONS	ECD-2	82
DETAILS OF SILT FENCE INSTALLATION	ECD-3	83
DITCH CHECK STRUCTURE, TYPICAL APPLICATIONS AND DETAILS	ECD-4	84
TEMPORARY EROSION, SEDIMENT AND WATER POLLUTION CONTROL MEASURES, SILT FENCE AND HAY BALE DITCH CHECKS	ECD-5	85
DETAILS OF EROSION CONTROL WATTLE DITCH CHECK	ECD-6	86
DETAILS OF EROSION CONTROL SILT DIKE DITCH CHECK	ECD-7	87
ROCK DITCH CHECK	ECD-8	88
ROCK FILTER DAM	ECD-9	89
ROCK DITCH CHECK WITH SUMP EXCAVATION AND ROCK FILTER DAM	ECD-10	90
INLET PROTECTION TYPICAL APPLICATIONS AND DETAILS	ECD-11	91
INLET PROTECTION DETAILS FOR COARSE AGGREGATE ON GRADES & SAGS	ECD-12	92
INLET PROTECTION DETAILS OF WATTLES	ECD-13	93
INLET PROTECTION DETAILS OF MANUFACTURED INLET PROTECTION DEVICE	ECD-14	94
INLET PROTECTION DETAILS OF SAND BAG	ECD-15	95
STABILIZED CONSTRUCTION ENTRANCE	ECD-16	96

DESCRIPTION OF SHEET	WKG. NO.	SH. NO.
TEMPORARY CULVERT STREAM CROSSING	ECD-17	97
TEMPORARY STREAM DIVERSION	ECD-18	98
TEMPORARY STREAM DIVERSION (BOX EXTENSIONS)	ECD-19	99
FLOATING TURBIDITY CURTAIN	ECD-20	100
DETAILS OF EROSION CONTROL SANDBAG DITCH CHECK	ECD-21	101
SEDIMENT RETENTION BARRIER	ECD-22	102
PERMANENT SIGNING SHEETS (7)		
PERMANENT SIGNING PLAN - N. STATE STREET STA. 10+00 - STA. 15+20	PSP-1	1001
PERMANENT SIGNING PLAN - N. STATE STREET STA. 15+20 - STA. 21+60	PSP-2	1002
PERMANENT SIGNING PLAN - N. STATE STREET STA. 21+60 - STA. 28+20	PSP-3	1003
PERMANENT SIGNING PLAN - E. WOODROW WILSON AVE. STA. 14+00 - STA. 19+20	PSP-4	1004
PERMANENT SIGNING PLAN - E. WOODROW WILSON AVE. STA. 19+20 - STA. 25+60	PSP-5	1005
PERMANENT SIGNING PLAN - S. PEACHTREE STREET (SOUTH OF WOODROW WILSON)	PSP-6	1006
PERMANENT SIGNING PLAN - E. WOODROW WILSON AVE. STA. 25+60 - STA. E.O.P	PSP-7	1007
TRAFFIC SIGNAL SHEETS (10)		
TRAFFIC SIGNAL INSTALLATION - N. STATE STREET @ UNIVERSITY DR./UPPER E. STADIUM DR.	TSI-1	2001
TRAFFIC SIGNAL INSTALLATION - N. STATE STREET HAWK @ LOWER E. STADIUM DR.	TSI-2	2002
TRAFFIC SIGNAL INSTALLATION - WOODROW WILSON AVE. @ PEACHTREE ST.	TSI-3	2003
TRAFFIC SIGNAL INSTALLATION - STATE ST. @ WOODROW WILSON AVE.	TSI-4	2004
DETAIL OF TRAFFIC SIGNAL HEADS, TRAFFIC SIGNAL SIGN AND GENERAL NOTES	TSI-1	2005
PULL BOX AND CONDUIT TRENCHING DETAILS FOR TRAFFIC SIGNAL INSTALLATION	TSI-3	2006
SPAN WIRE AND STEEL STRAIN POLE DETAILS FOR TRAFFIC SIGNAL INSTALLATION	TSI-4	2007
TYPICAL DETAILS TRAFFIC CONTROLLER CABINET MOUNTINGS, TYPE 1 POLE ATTACHMENTS AND MISCELLANEOUS DETAILS	TSI-5	2008
MAST ARM AND PEDESTAL POLE DETAILS FOR TRAFFIC SIGNAL INSTALLATION	TSI-6	2009
TRAFFIC CONTROL PLAN TYPICAL SIGNAL INSTALLATION	TSI-7	2010
STANDARD DRAWINGS - ROADWAY SHEETS (22)		
PAVEMENT MARKING LEGEND DETAILS	PM-5	6124
PAVEMENT MARKING LEGEND DETAILS	PM-6	6125
MEDIAN BARRIER: CONCRETE (PRECAST)	MB-2A	6205
STANDARD ROADSIDE SIGNS	SN-3	6222
STANDARD ROADSIDE SIGNS	SN-3A	6223
STANDARD ROADSIDE SIGNS	SN-3B	6224
STANDARD ROADSIDE SIGNS ASSEMBLY AND INSTALLATION	SN-4	6225
STANDARD ROADSIDE SIGNS ASSEMBLY AND INSTALLATION	SN-4A	6226
STANDARD ROADSIDE SIGNS ASSEMBLY AND INSTALLATION	SN-4B	6227
TRAFFIC CONTROL PLAN FOR POSTED SPEED LIMIT LESS THAN 65 MPH (4-LANE: MEDIAN OR OUTSIDE LANE CLOSURE) (WORK DAY ONLY)	TCP-2	6251
SHORT DURATION CLOSING OF DIVIDED HIGHWAYS	TCP-9	6258
TRAFFIC CONTROL PLAN FOR TEMPORARY CONSTRUCTION CROSSOVER (WORK DAY ONLY)	TCP-13	6262
TRAFFIC CONTROL PLANS UNEVEN PAVEMENT DETAILS	TCP-14	6263
TEMPORARY STRIPING FOR TRAFFIC CONTROL 2-LANE AND 4-LANE DIVIDED HIGHWAYS	TCP-15	6264
TEMPORARY STRIPING FOR TRAFFIC CONTROL 4-LANE AND 5-LANE UNDIVIDED ROADWAYS	TCP-16	6265
TYPICAL GRADING TRANSITIONS BETWEEN CUTS AND FILLS	GT-1	6272
PIPE CULVERT INSTALLATION	PI-1	6300
CONCRETE PIPE COLLAR	PC-1	6301
JUNCTION BOX FOR PIPE CULVERTS	JB-1	6302
TYPE 1 MEDIAN INLET (24" PIPE AND UNDER)	MI-1	6306
STORM SEWER INLET-TYPE SS-1	SS-1	6319
STORM SEWER INLET-TYPE SS-2	SS-2	6322
TOTAL SHEETS		142

11/2/2017 1:24:40 PM DETAILED INDEX.DGN



PS & E PLANS-DATE: 11/21/2016		
FMS CON. # 106330/302000		
REVISIONS		
10/17/17	12.13.21.2002	SSV

MISSISSIPPI DEPARTMENT OF TRANSPORTATION	
DETAILED INDEX	
PROJ. NUM.: SP-0250-00(048)	WORKING NUMBER
COUNTY: HINDS	DI-1
FILENAME: DETAILED INDEX.DGN	SHEET NUMBER
DESIGN TEAM	2

STATE	PROJECT NO.
MISS.	SP-0250-00(048)


GENERAL NOTES

1. THE LOCATION AND SPACING OF SIGNS, SHOWN ON THE TRAFFIC CONTROL PLANS, ARE APPROXIMATE AND MAY BE ADJUSTED AS NECESSARY TO FIT FIELD CONDITIONS.
2. ALL TRAFFIC CONTROL DEVICES ON THIS PROJECT SHALL COMPLY WITH PART VI OF THE MUTCD (LATEST EDITION).
3. ALL PLASTIC DRUMS SHALL HAVE A BALLASTING COLLAR MADE FROM RECYCLED TRUCK TIRES OR OTHER SUITABLE MATERIAL.
4. 25% SHRINKAGE FACTOR USED IN THE EARTHWORK CALCULATIONS IS FOR DESIGN ESTIMATING PURPOSES ONLY.
5. THE CONTRACTOR SHALL BE RESPONSIBLE FOR PROTECTING EXISTING STRUCTURES SUCH AS, BUT NOT LIMITED TO, PIPES, INLETS, APRONS, AND BRIDGES FROM DAMAGE WHICH MIGHT OCCUR DURING CONSTRUCTION. THE CONTRACTOR SHALL REPLACE OR REPAIR, AS DIRECTED BY THE ENGINEER, ANY STRUCTURES DAMAGED DURING THE LIFE OF THE CONTRACT. NO PAYMENT WILL BE MADE FOR REPLACEMENT OR REPAIR OF DAMAGED ITEMS.
6. ALL PIPE JOINTS ARE TO BE WRAPPED IN 24-INCH WIDE TYPE V GEOTEXTILE FABRIC. ALL PICKUP HOLES SHALL BE PLUGGED AND COVERED WITH TYPE V GEOTEXTILE FABRIC , THE COST OF WHICH SHALL BE ABSORBED IN OTHER BID ITEMS.
7. VOIDS CREATED BY THE REMOVAL OF, BUT NOT LIMITED TO, POSTS, CONCRETE ANCHORS, AND FOOTINGS SHALL BE BACKFILLED AND TAMPED IN ACCORDANCE WITH SECTION 203 OF THE MISSISSIPPI STANDARD SPECIFICATIONS FOR ROAD AND BRIDGE CONSTRUCTION.
8. UTILITIES ON THE DRAWINGS ARE SHOWN IN THEIR ORIGINAL LOCATION BASED UPON THE BEST INFORMATION AVAILABLE TO THE ENGINEER. UTILITIES THAT WERE FOUND TO BE IN CONFLICT WITH CONSTRUCTION HAVE BEEN RELOCATED. PERMITS ARE ON FILE WITH THE DEPARTMENT SHOWING THE APPROXIMATE LOCATION OF UTILITIES RELOCATED WITHIN THE RIGHT-OF-WAY. THE ENGINEER CAN NOT AND DOES NOT WARRANT THAT THIS INFORMATION IS COMPLETE OR ACCURATE. THE CONTRACTOR MUST COORDINATE WITH MISSISSIPPI ONE CALL AND DIRECTLY WITH THE INVOLVED UTILITY OWNERS TO HAVE UNDERGROUND UTILITY LINES FIELD LOCATED IN ADVANCE OF CONSTRUCTION. NOTE THAT SOME UTILITY OWNERS DO NOT PARTICIPATE IN MISSISSIPPI ONE CALL.
9. WORK ON STRUCTURES FOR THIS PROJECT REQUIRES EXCAVATION IN THE IMMEDIATE VICINITY OF TRAFFIC AND ADJACENT PROPERTIES. THEREFORE, THE RISK OF A FAILURE OCCURRING DURING EXCAVATION REQUIRES THAT EXTREME CAUTION BE EXERCISED. THE CONTRACTOR SHALL BE RESPONSIBLE FOR PLACING WHAT BRACING, SHORING, OR GROUND SUPPORT SYSTEM THAT IS DEEMED NECESSARY TO PREVENT A FAILURE AND PROTECT THE PERSONS WORKING NEAR THE EXCAVATION, THE PUBLIC THAT MAY BE ABOVE THE EXCAVATION OR ANY STRUCTURES ADJACENT TO THE EXCAVATION. ALL COSTS FOR DESIGNING, DRAWING, AND CONSTRUCTING THE FACILITY SHALL BE INCLUDED IN THE PRICE BID FOR CONTRACT ITEMS.
10. SOME WORK IS REQUIRED OUTSIDE THE PROJECT LIMITS. NO ADDITIONAL COMPENSATION WILL BE MADE FOR SUCH WORK EXCEPT AS PROVIDED BY SPECIFIC PAY ITEMS INCLUDED IN THE PLANS.
11. WIRE FENCE BACKING WILL BE REQUIRED FOR ALL SILT FENCE. (SEE WK. NO. ECD-3)
12. ALL ADDENDA TO THESE PLANS WILL BE POSTED TO WWW.MDOT.MS.GOV UNDER THE PROPOSAL ADDENDA COLUMN. BIDDERS ARE ADVISED THAT HARD COPIES OF ANY ADDENDA FOR THIS PROJECT WILL NOT BE MAILED. IT IS THE BIDDER'S RESPONSIBILITY TO CHECK AND SEE IF ANY ADDENDA HAVE BEEN POSTED FOR THIS PROJECT.
13. FLUORESCENT ORANGE SHEETING SHALL BE USED ON ALL CONSTRUCTION AND TRAFFIC CONTROL SIGNS EXCEPT FOR THOSE DESIGNATED ON THE PLANS TO BE BLACK LEGEND AND BORDER ON WHITE BACKGROUND.
14. VEGETATIVE MATERIAL WILL BE REMOVED PRIOR TO PLACEMENT OF GRANULAR MATERIAL. THE COST OF WHICH SHALL BE ABSORBED IN OTHER BID ITEMS.
15. THE CONTRACTOR SHALL COORDINATE WITH THE CONTRACTOR FROM ADJACENT PROJECT(S) IN IMPLEMENTING THE TRAFFIC CONTROL PLAN AS DIRECTED BY THE ENGINEER. ALL CONFLICTING SIGNS SHALL BE COVERED OR REMOVED AS DIRECTED BY THE ENGINEER.
16. THE CONTRACTOR SHALL COVER ANY TEMPORARY TRAFFIC CONTROL SIGNS SHOWN IN THE TRAFFIC CONTROL PLAN THAT DO NOT APPLY TO THE CURRENT PHASE.
17. ROADWAY SIGNS THAT ARE IN CONFLICT WITH CONSTRUCTION OF THIS PROJECT SHALL BE REMOVED AND RELOCATED BY THE CONTRACTOR AS DIRECTED BY THE ENGINEER, THE COST OF WHICH SHALL BE ABSORBED IN OTHER ITEMS BID.
18. REMOVAL OF RAISED PAVEMENT MARKERS THAT ARE IN CONFLICT WITH REQUIRED CONSTRUCTION IS NOT CONSIDERED A SEPARATE PAY ITEM. COST TO BE ABSORBED IN OTHER ITEMS BID.
19. WHERE MILLING IS REQUIRED, THE CONTRACTOR SHALL PROVIDE OUTLETS IN THE EXISTING SHOULDERS AT SUFFICIENT INTERVALS TO PREVENT POOLING OR STANDING WATER ON THE MILLED SURFACE, THE COST OF WHICH SHALL BE ABSORBED IN OTHER ITEMS BID.
20. PRIOR TO EARTHWORK OPERATIONS, THE EXISTING TOP 4" TOPSOIL IS TO BE STRIPPED AND STOCKPILED. AFTER THE GRADING OPERATIONS ARE COMPLETED, SAID TOPSOIL SHALL BE PLACED ON ALL AREAS THAT ARE NOT TO BE PAVED OR OTHERWISE PROTECTED, IN ACCORDANCE WITH SECTION 211 OF THE SPECIFICATIONS, OR THE VEGETATION SCHEDULE (SEE WK. SH. VS-1). EXISTING TOPSOIL AND ALL COSTS ASSOCIATED WITH STRIPPING, HAULING, STOCKPILING, AND PLACEMENT OF THE EXISTING TOPSOIL IS TO BE ABSORBED IN OTHER EARTHWORK ITEMS.
21. THE CONTRACTOR IS RESPONSIBLE FOR FIELD-VERIFICATION OF EXISTING GRADES AND MAKING ADJUSTMENTS AS NECESSARY WITH THE APPROVAL OF THE PROJECT ENGINEER.
22. TEMPORARY STRIPING SHALL CONFORM TO FINISHED STRIPE SPECIFICATIONS FOR ALIGNMENT, NEATNESS, AND STRAIGHTNESS.
23. ERECTION DATES ARE TO BE LEGIBLY WRITTEN IN BOLD BLACK MARKINGS ON THE BACK OF ALL SIGNS WITH A PERMANENT MARKING STICK THAT IS WATERPROOF, FADE RESISTANT, AND MARKS ON WET OR DRY SURFACES.
24. THE CONTRACTOR SHALL PRESSURE WASH AND SPRAY THE UNDISTURBED CURB AND GUTTER WITH CURING COMPOUND WITHIN THE PROJECT LIMITS TO BETTER MATCH THE NEW CURB AND GUTTER. COST TO BE ABSORBED IN OTHER ITEMS OF WORK.
25. HANDWORK (NO HEAVY EQUIPMENT) WILL BE REQUIRED FOR ANY CONSTRUCTION UNDER THE DRIP LINE OF EXISTING TREES.
26. SIGNAL TIMING TO BE PROVIDED BY NEEL-SCHAFFER. THE CONTRACTOR IS REQUIRED TO ESTABLISH COMMUNICATIONS BETWEEN THE INTERCONNECTED SIGNALS AND THE CITY TMC. THE CONTRACTOR SHALL COORDINATE WITH THE CITY FOR IP ADDRESSES ON ALL NETWORKABLE DEVICES.
27. LIST OF PUBLIC UTILITIES:

- | | | |
|--|--|---|
| ELECTRIC SERVICE
ENERGY
DAREK ASHLEY
JACKSON, MS.
601-351-4367 | TELEPHONE SERVICE
A T & T
JOSHUA MOORE
601-859-3307 | MISS ONE CALL SYSTEM
"CALL BEFORE YOU DIG"
800-227-6477 |
| GAS SERVICE
ATMOS ENERGY
GREG SPROW
601-592-5312 | FIBER OPTIC SERVICES
MCI/VERIZON
JASON CORLEY
JACKSON, MS
601-352-3733 | UMMC
UMMC INFORMATION SYSTEMS
BOBBIE SIMON
601-984-1006

UMMC PHYSICAL FACILITIES
ARTHUR JONES
601-984-1420
601-815-0193 |
| CABLE SERVICE
COMCAST
KEN GOSS
601-862-4834 | INLINE SOLUTIONS
KEVIN MCCOY
JACKSON, MS
251-583-1936 | |
| SEWER SERVICE
CITY OF JACKSON
BILL MILEY
601-960-2090 | CSPIRE
BRIAN CARTER
RIDGELAND, MS
601-487-5333 | |
| WATER SERVICE
CITY OF JACKSON
BILL MILEY
601-960-2090 | INFORMATION SYSTEMS
MS DEPT OF INFORMATION TECHNOLOGY SYSTEMS
JEFF JENNINGS
601-359-2381 | |
| TRAFFIC SIGNAL MAINTENANCE
CITY OF JACKSON
NATHAN LIGHTER
601-960-1757 | | |

11/18/2016 9:02 AM GN.DGN

MISSISSIPPI DEPARTMENT OF TRANSPORTATION GENERAL NOTES		
WORKING NUMBER GN-1		SHEET NUMBER 3
FILENAME: GN.DGN DESIGN TEAM _____ CHECKED _____ DATE _____		