

STATE	PROJECT NUMBER	SHEET NO.
MISSISSIPPI	BR-0006-01(095)	1

GENERAL INDEX

INCLUDED THIS PROJECT	BEGIN WITH SHEET
<input checked="" type="checkbox"/> ROADWAY	1
<input checked="" type="checkbox"/> PERMANENT SIGNS	1001
<input type="checkbox"/> TRAFFIC SIGNALS	2001
<input type="checkbox"/> ITS COMPONENTS	3001
<input type="checkbox"/> LIGHTING	4001
<input type="checkbox"/> (RESERVED)	5001
<input checked="" type="checkbox"/> ROADWAY STANDARD DWGS	6001
<input type="checkbox"/> BOX CULVERT STD. DRAWINGS (LRFD)	7001
<input type="checkbox"/> BOX CULVERT STD. DRAWINGS (STD. SPEC.)	7501
<input checked="" type="checkbox"/> BRIDGE	8001
<input checked="" type="checkbox"/> CROSS SECTIONS	9001

BRIDGE STRUCTURES REQ'D.

BR. NO.: 1.6
STA. 364+78.042 TO STA. 365+97.958
LENGTH = 119.916'
SPANS: 3 @ 40'

BOX BRIDGES REQ'D.
NONE

GPS CONTROL NOTES

HORIZONTAL DATUM: NAD 83	MS W ZONE	(US SURVEY FEET)
HORIZONTAL MONUMENT	NORTH	EAST
01	1623863.918	2127518.727
02	1624261.782	2125555.446
CPS	1623954.847	2127044.957

VERTICAL DATUM: NAVD	(US SURVEY FEET)
VERTICAL MONUMENT	ELEVATION
01	152.47
02	155.25
CPS	154.15

ALL AZIMUTHS AND DISTANCES ARE GRID VALUES, US SURVEY FEET	
CONVERSION VALUES	PROJECT AVERAGE
GROUND TO GRID (COMBINED) FACTOR	0.99997959
GRID TO GEODETIC AZIMUTH	0.99998272

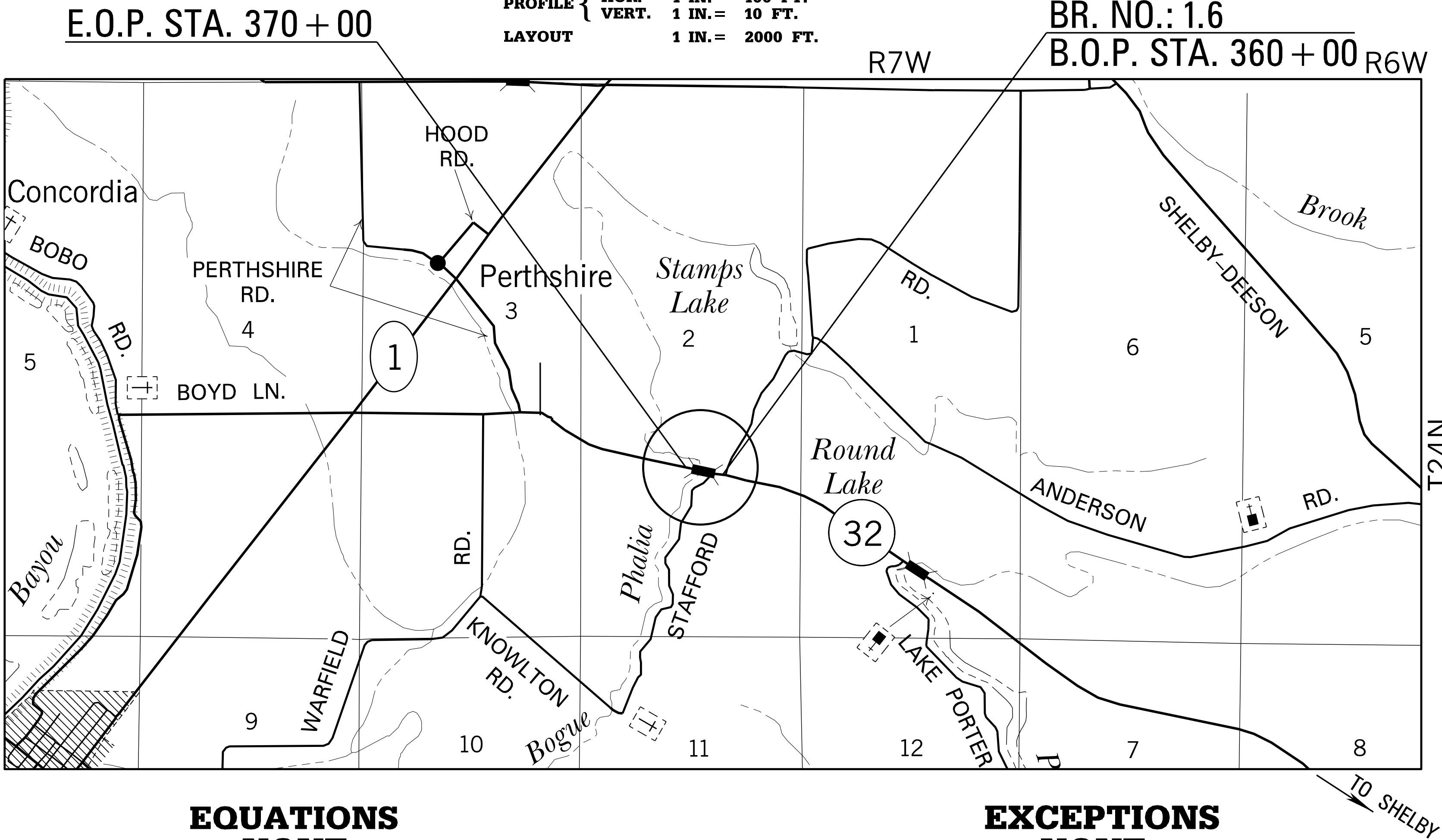
CONVENTIONAL SYMBOLS

COUNTY LINE	
TOWN CORPORATION LINE	
SECTION LINE	§ § §
EXISTING ROAD OR TRAVELED WAY	---
PROPOSED ROAD OR TRAVELED WAY	---
RAILROAD	+
SURVEY LINE	○
BRIDGES	▭

LENGTH OF ROADWAY	880.084	FT.	0.167	MI.
LENGTH OF BRIDGES	119.916	FT.	0.023	MI.
LENGTH OF PROJECT (NET)			0.190	MI.
LENGTH OF EXCEPTIONS	000.000	FT.	0.000	MI.
LENGTH OF PROJECT (GROSS)			0.190	MI.

LENGTH DATA

PLAN		1 IN. = 100 FT.
PROFILE {	HOR.	1 IN. = 100 FT.
	VERT.	1 IN. = 10 FT.
LAYOUT		1 IN. = 2000 FT.



EQUATIONS
NONE

EXCEPTIONS
NONE

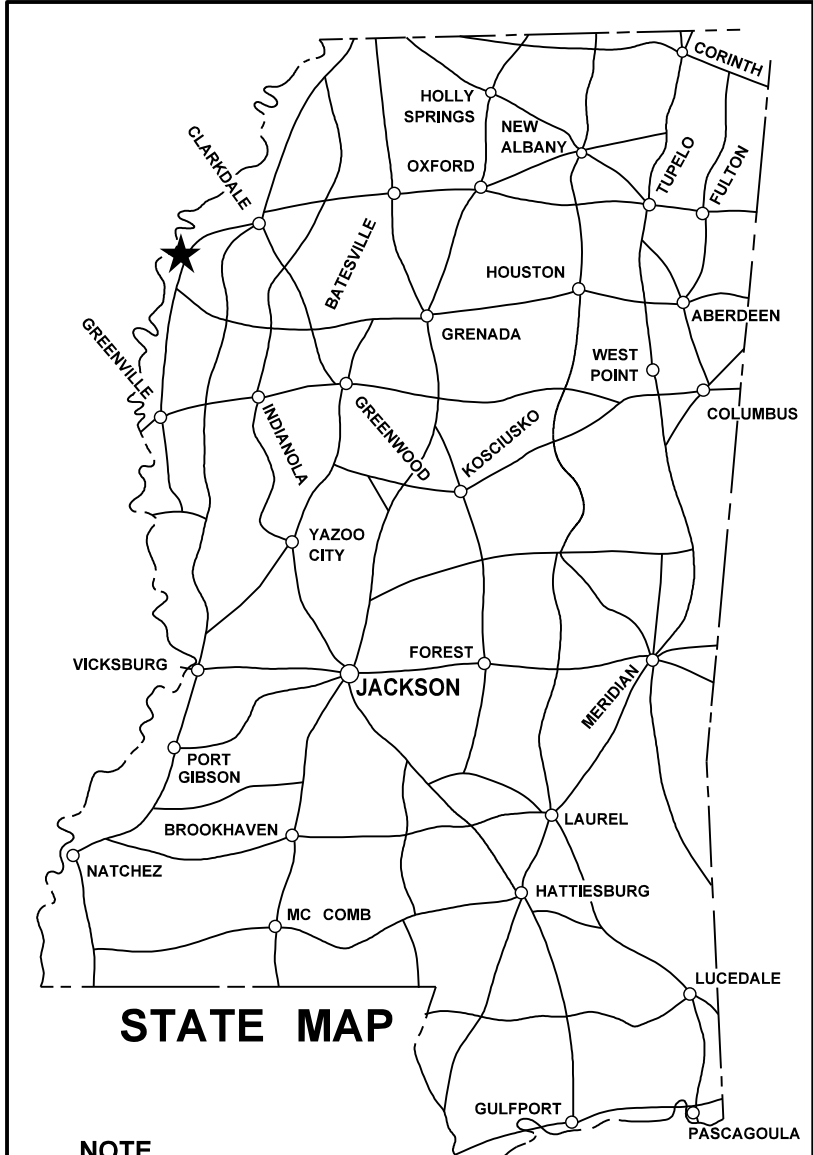
STATE OF MISSISSIPPI

MISSISSIPPI DEPARTMENT OF TRANSPORTATION

PLAN AND PROFILE OF PROPOSED
STATE HIGHWAY
FEDERAL AID PROJECT NO.: BR-0006-01(095)

BRIDGE REPLACEMENT
S.R. 32 BR. NO. 1.6
BOLIVAR COUNTY

FMS. CONST. NO. 106111/302000



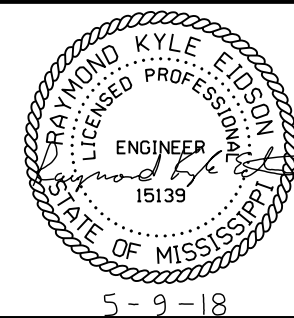
NOTE
★ INDICATES APPROXIMATE
LOCATION OF PROJECT.
LAT. 33°57'47.88" N LONG. 90°53'34.65" W
(APPROX. MIDDLE OF PROJECT)

DESIGN CONTROL
55 MPH = V (SPEED DESIGN)
ADT (2019) = 400 : ADT (2039) = 610
DHV = 70 : D = 60 % T = 15 %

PERMITS ACQUIRED BY MDOT		
WETLANDS AND WATERS PERMITS		
	WATERS	WETLANDS
NATIONWIDE #14	<input checked="" type="checkbox"/>	<input checked="" type="checkbox"/>
NATIONWIDE (OTHER)*	<input checked="" type="checkbox"/>	<input checked="" type="checkbox"/>
GENERAL*	<input checked="" type="checkbox"/>	<input checked="" type="checkbox"/>
INDIVIDUAL (404)*	<input checked="" type="checkbox"/>	<input checked="" type="checkbox"/>
STORMWATER PERMIT		<input checked="" type="checkbox"/>
Y	REQUIRED, CNOI SUBMITTED BY MDOT (DISTURBED AREA = 5 ACRES)	
S	REQUIRED, SCNOI TO BE SUBMITTED BY CONTRACTOR (1 TO 4.99 ACRES)	
N	NO STORMWATER PERMIT REQUIRED (<1 ACRE)	
APPROVED BY: _____		

P S & E DATE: 5-9-2018

APPROVED:
DEPUTY EXECUTIVE DIRECTOR / CHIEF ENGINEER
EXECUTIVE DIRECTOR



DESCRIPTION OF SHEET	WKG. NO.	SH. NO.	DESCRIPTION OF SHEET	WKG. NO.	SH. NO.
TITLE SHEET (1)		1	STANDARD DRAWINGS - ROADWAY SHEETS (59)		
DETAILED INDEX & GENERAL NOTES (4)			33.5" BRIDGE END PAVEMENT RAIL	BER-1	6009
			PAVEMENT MARKING DETAILS FOR 2 & 4-LANE DIVIDED ROADWAYS	PM-1	6051
DETAILED INDEX	DI-1	2	2-WAY RAISED PAVEMENT MARKERS AT INTERSECTING ROADS (2-LANE)	PM-11	6061
DETAILED INDEX	DI-2	3			
GENERAL NOTES	GN-1	4	TYPICAL TEMPORARY EROSION CONTROL/SEDIMENT CONTROL APPLICATIONS	ECD-1	6101
GENERAL NOTES	GN-2	5	DETAILS OF SEDIMENT BARRIER APPLICATIONS	ECD-2	6102
			DETAILS OF SILT FENCE INSTILLATION	ECD-3	6103
			DITCH CHECK STRUCTURES, TYPICAL APPLICATIONS AND DETAILS	ECD-4	6104
			TEMPORARY EROSION, SEDIMENT, AND WATER POLLUTION CONTROL MEASURES		
			(SILT FENCE AND HAY BALE DITCH CHECKS)	ECD-5	6105
TYPICAL SECTION SHEETS (3)			DETAILS OF EROSION CONTROL WATTLE DITCH CHECK	ECD-6	6106
TYPICAL SECTIONS - MAINLINE S.R. 32	TS-1	6	DETAILS OF EROSION CONTROL SILT DIKE DITCH CHECK	ECD-7	6107
TYPICAL SECTIONS - BRIDGE END PAVEMENT	TS-2	7	ROCK DITCH CHECK	ECD-8	6108
TYPICAL SECTIONS - MISCELLANEOUS	TS-3	8	ROCK FILTER DAM	ECD-9	6109
			ROCK DITCH CHECK WITH SUMP EXCAVATION AND ROCK FILTER DAM	ECD-10	6110
			TYPICAL APPLICATIONS AND DETAILS FOR INLET CONSTRUCTION	ECD-11	6111
			INLET PROTECTION DETAILS FOR SEDIMENT CONTROL STONE ON GRADES AND SAGS	ECD-12	6112
			INLET PROTECTION DETAILS OF WATTLES	ECD-13	6113
			INLET PROTECTION DETAILS OF MANUFACTURED INLET PROTECTION DEVICE	ECD-14	6114
			INLET PROTECTION DETAILS OF SANDBAGS	ECD-15	6115
			STABILIZED CONSTRUCTION ENTRANCE	ECD-16	6116
			TEMPORARY CULVERT STREAM CROSSING	ECD-17	6117
			TEMPORARY STREAM DIVERSION	ECD-18	6118
			TEMPORARY STREAM DIVERSION (BOX EXTENSION)	ECD-19	6119
			FLOATING TURBIDITY CURTAIN	ECD-20	6120
			DETAILS OF EROSION CONTROL SANDBAG DITCH CHECK	ECD-21	6121
			SEDIMENT RETENTION BARRIER	ECD-22	6122
			DETAILS OF TYPICAL DITCH TREATMENTS	DT-1	6123
			TYPICAL TEMPORARY EROSION CONTROL MEASURES (SLOPE DRAIN AND TYPE A SILT BASIN)	BAS-A	6125
			TYPICAL TEMPORARY EROSION CONTROL MEASURES (TYPE B SILT BASIN)	BAS-B	6126
PLAN & PROFILE SHEETS (2)			EROSION CONTROL BLANKET	ECB-1	6131
STA. TO STA. S.R. 32	3	16			
STA. TO STA. - BOGUE PHALIA	3A	17			
TRAFFIC CONTROL SHEETS (2)			GUARDRAIL: "W" BEAM (WOOD POSTS)	GR-1	6201
			GUARDRAIL: THRIE BEAM (WOOD POSTS)	GR-1A	6202
			GUARDRAIL: "W" BEAM (STEEL POSTS)	GR-1B	6203
DETOUR SIGNING PLAN - SR32 SIGNING DETOUR	DSP-1	18	GUARDRAIL: BRIDGE END SECTION TYPE "I" (WOOD POSTS) (NEW CONSTRUCTION)	GR-2F	6210
DETOUR SIGNING PLAN - SR32 SIGNING DETOUR	DSP-2	19	GUARDRAIL: BRIDGE END SECTION TYPE "I" (STEEL POSTS) (NEW CONSTRUCTION)	GR-2G	6211
			GUARDRAIL: TYPICAL INSTALLATION AT BRIDGE APPROACHES FOR 2-LANE, 2-WAY HIGHWAY	GR-4A	6215
			GUARDRAIL: RUB RAIL HARDWARE	GR-RR	6218
			GUARDRAIL: MISCELLANEOUS HARDWARE	GR-HW	6221
PAVEMENT MARKING SHEETS (1)					
PAVEMENT MARKING DETAIL - STA. 361+00 - STA. 370+00	PMD-1	20			
SPECIAL DESIGN SHEETS (4)					
VEGETATION SCHEDULE	VS-1	21			
BRIDGE END PAVEMENT WITH RAIL, OVERLAY, AND SLEEPER SLAB (NEW CONSTRUCTION)	SDBE-1	22			
STA. TO STA. S.R. 32	ECP3	23			
STA. TO STA. - BOGUE PHALIA	ECP3A	24			
			NEEL-SCHAFER		

[illegible]

DESCRIPTION OF SHEET	WKG. NO.	SH. NO.
<u>STANDARD DRAWINGS - ROADWAY SHEETS (CONTINUED)</u>		
STANDARD ROADSIDE SIGNS	SN-3A	6304
STANDARD ROADSIDE SIGNS	SN-3B	6305
STANDARD ROADSIDE SIGN ASSEMBLY AND INSTALLATION	SN-4	6306
STANDARD ROADSIDE SIGN ASSEMBLY AND INSTALLATION	SN-4A	6307
STANDARD ROADSIDE SIGN ASSEMBLY AND INSTALLATION	SN-4B	6308
TYPICAL INSTALLATION AND DETAILS OF DELINEATORS AND DISTANCE REFERENCE SIGNS	SN-8	6314
TYPICAL GUARDRAIL: DELINEATION	SN-8C	6317
SIGNING DETAILS FOR BRIDGE APPROACHES	SN-9	6318
TRAFFIC CONTROL PLAN WITH FLAGGER (ONE-LANE CLOSURE OF TWO WAY TRAFFIC)	TCP-1	6351
SHORT DURATION CLOSING OF TWO-LANE TWO-WAY HIGHWAYS	TCP-6	6356
HIGHWAY SIGN AND BARRICADE DETAILS FOR CONSTRUCTION PROJECTS	TCP-8	6358
TRAFFIC CONTROL PLAN MOBILE OPERATIONS MULTILANE ROADS AND TWO-LANE ROADS	TCP-9	6359
TRAFFIC CONTROL PLAN : UNEVEN PAVEMENT DETAILS	TCP-12	6362
TEMPORARY STRIPING FOR TRAFFIC CONTROL 2-LANE AND 4-LANE DIVIDED HIGHWAYS	TCP-13	6363
LOCATION OF R16-3 SIGNS (SPEEDING FINES DOUBLED)	TCP-15	6365
TRAFFIC CONTROL DETAILS DRUM PLACEMENT AND SHOULDER CLOSURE	TCP-16	6366
RURAL DRIVEWAYS	RD-1	6403
TYPICAL GRADING TRANSITION BETWEEN CUTS & FILLS	GT-1	6404
MISCELLANEOUS DETAIL SHEET 1. STACKED PIPE JOINT		
2. EXCAVATION AT GRADE POINTS	MDS-1	6425
DETAIL OF PAVED FLUMES	PF-1	6426
PIPE CULVERT INSTALLATION	PI-1	6501
SMALL ANIMAL GUARD AND UNDERDRAIN MARKER	SAG-1	6529
<u>SPECIAL DESIGN BRIDGE SHEETS - SEE BRIDGE SHEETS BEGINNING ON 8001</u>		
<u>CROSS SECTIONS (12)</u>		
S.R. 32		9001-9008
S.R. 32 BOGUE PHALIA		9009-9012
<u>TOTAL SHEETS (NOT INCLUDING BRIDGE SHEETS)</u>		96

[illegible]

5/8/2018 3:24 PM GN-1.dgn PLAN DIVISION ROADWAY MISSISSIPPI DEPARTMENT OF TRANSPORTATION

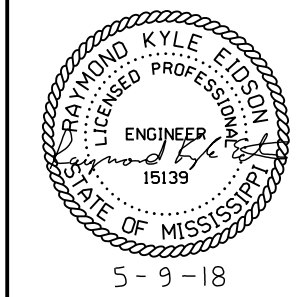
STATE	PROJECT NO.
MISS.	BR-0006-01(095)

GENERAL NOTES

(1)	THE LOCATION AND SPACING OF SIGNS, SHOWN ON THE TRAFFIC CONTROL PLANS, ARE APPROXIMATE AND MAY BE ADJUSTED AS NECESSARY TO FIT FIELD CONDITIONS.
(2)	ALL TRAFFIC CONTROL DEVICES ON THIS PROJECT SHALL COMPLY WITH PART VI OF THE MUTCD (LATEST EDITION).
(3)	ALL PLASTIC DRUMS SHALL HAVE A BALLASTING COLLAR MADE FROM RECYCLED TRUCK TIRES OR OTHER SUITABLE MATERIAL.
(4)	THE CONTRACTOR SHALL BE RESPONSIBLE FOR PROTECTING EXISTING STRUCTURES SUCH AS, BUT NOT LIMITED TO, PIPES, INLETS, APRONS, AND BRIDGES FROM DAMAGE WHICH MIGHT OCCUR DURING CONSTRUCTION. THE CONTRACTOR SHALL REPLACE OR REPAIR, AS DIRECTED BY THE ENGINEER, ANY STRUCTURES DAMAGED DURING THE LIFE OF THE CONTRACT. NO PAYMENT WILL BE MADE FOR REPLACEMENT OR REPAIR OF DAMAGED ITEMS.
(5)	ALL PIPE JOINTS ARE TO BE WRAPPED IN 24-INCH WIDE TYPE V GEOTEXTILE FABRIC. ALL PICKUP HOLES SHALL BE PLUGGED AND COVERED WITH TYPE V GEOTEXTILE FABRIC , THE COST OF WHICH SHALL BE ABSORBED IN OTHER ITEMS BID.
(6)	VOIDS CREATED BY THE REMOVAL OF, BUT NOT LIMITED TO, POSTS, CONCRETE ANCHORS, AND FOOTINGS SHALL BE BACKFILLED AND TAMPED IN ACCORDANCE WITH SECTION 203 OF THE MISSISSIPPI STANDARD SPECIFICATIONS FOR ROAD AND BRIDGE CONSTRUCTION , THE COST OF WHICH WILL BE ABSORBED IN OTHER ITEMS BID.
(7)	UTILITIES ON THE DRAWINGS ARE SHOWN IN THEIR ORIGINAL LOCATION BASED UPON THE BEST INFORMATION AVAILABLE TO THE ENGINEER. UTILITIES THAT WERE FOUND TO BE IN CONFLICT WITH CONSTRUCTION HAVE BEEN RELOCATED. PERMITS ARE ON FILE WITH THE DEPARTMENT SHOWING THE APPROXIMATE LOCATION OF UTILITIES RELOCATED WITHIN THE RIGHT-OF-WAY. THE ENGINEER CAN NOT AND DOES NOT WARRANT THAT THIS INFORMATION IS COMPLETE OR ACCURATE. THE CONTRACTOR SHALL BE RESPONSIBLE FOR COORDINATING DIRECTLY WITH THE INVOLVED UTILITY OWNERS TO HAVE UNDERGROUND UTILITY LINE FIELD LOCATED IN ADVANCE OF CONSTRUCTION.
(8)	WORK ON STRUCTURES FOR THIS PROJECT REQUIRES EXCAVATION IN THE IMMEDIATE VICINITY OF TRAFFIC AND ADJACENT PROPERTIES. THEREFORE, THE RISK OF A FAILURE OCCURRING DURING EXCAVATION REQUIRES THAT EXTREME CAUTION BE EXERCISED. THE CONTRACTOR SHALL BE RESPONSIBLE FOR PLACING WHAT BRACING, SHORING, OR GROUND SUPPORT SYSTEM THAT IS DEEMED NECESSARY TO PREVENT A FAILURE AND PROTECT THE PERSONS WORKING NEAR THE EXCAVATION, THE PUBLIC THAT MAY BE ABOVE THE EXCAVATION, OR ANY STRUCTURES ADJACENT TO THE EXCAVATION. ALL COSTS FOR DESIGNING, DRAWING, AND CONSTRUCTING THE FACILITY SHALL BE INCLUDED IN THE PRICE BID FOR CONTRACT ITEMS.
(9)	SOME WORK IS REQUIRED OUTSIDE THE PROJECT LIMITS. NO ADDITIONAL COMPENSATION WILL BE MADE FOR SUCH WORK EXCEPT AS PROVIDED BY SPECIFIC PAY ITEMS INCLUDED IN THE PLANS.
(10)	WIRE FENCE BACKING WILL BE REQUIRED FOR ALL SILT FENCE. (SEE WK. NO. ECD-3)
(11)	FOR LIST OF PUBLIC UTILITIES, SEE WORKING NO. 3.
(12)	FLUORESCENT ORANGE SHEETING SHALL BE USED ON ALL CONSTRUCTION AND TRAFFIC CONTROL SIGNS EXCEPT FOR THOSE DESIGNATED ON THE PLANS TO BE BLACK LEGEND AND BORDER ON WHITE BACKGROUND.
(13)	VEGETATIVE MATERIAL WILL BE REMOVED AND DISCARDED PRIOR TO PLACEMENT OF CRUSHED STONE. THE COST OF WHICH SHALL BE ABSORBED IN OTHER ITEMS BID.
(14)	ALL DIMENSIONS AND SPACINGS FOR BRIDGE RAIL CONNECTORS SHALL BE VERIFIED IN THE FIELD BY THE CONTRACTOR PRIOR TO FABRICATION.

GENERAL NOTES (CONT.)

(15)	THE CONTRACTOR SHALL COVER ANY TEMPORARY TRAFFIC CONTROL SIGNS SHOWN IN THE TRAFFIC CONTROL PLAN THAT DO NOT APPLY TO THE CURRENT PHASE.
(16)	REMOVAL OF RAISED PAVEMENT MARKERS THAT ARE IN CONFLICT WITH REQUIRED CONSTRUCTION IS NOT CONSIDERED A SEPARATE PAY ITEM. COST TO BE ABSORBED IN OTHER ITEMS BID.
(17)	THE EROSION CONTROL PLAN SHEETS PROVIDED IN THE PLAN SET HAVE BEEN APPROVED AND ARE AVAILABLE FOR USE BY THE CONTRACTOR. THE STORMWATER POLLUTION PREVENTION PLAN (SWPPP) HAS ALSO BEEN APPROVED AND IS AVAILABLE FOR USE BY THE CONTRACTOR. A COPY OF THE SWPPP IS AVAILABLE THROUGH THE OFFICE ENGINEER PROIR TO BIDDING. TEMPORARY EROSION AND SEDIMENT CONTROL BMP'S INCLUDING SEDIMENT BARRIERS, DITCH CHECKS, AND SILT FENCE MAY BE REQUIRED IN ADDITION TO THOSE ON THE EROSION AND SEDIMENT CONTROL PLAN SHEETS, AS DIRECTED BY THE ENGINEER.
(18)	THE CONTRACTOR IS RESPONSIBLE FOR FIELD-VERIFICATION OF EXISTING GRADES AND MAKING ADJUSTMENTS AS NECESSARY WITH THE APPROVAL OF THE PROJECT ENGINEER.
(19)	TEMPORARY STRIPING SHALL CONFORM TO FINISHED STRIPE SPECIFICATIONS FOR ALIGNMENT, NEATNESS, AND STRAIGHTNESS.
(20)	ALL ITEMS OF WORK ASSOCIATED WITH THE INSTALLATION OF CONSTRUCTION ENTRANCES SHALL BE ABSORBED IN OTHER ITEMS OF WORK.
(21)	IF COLORS ARE USED ON PLAN/PROFILE SHEETS, THEY ARE INTENDED TO VISUALLY EASE THE LOCATION OF ELEMENTS FOR USERS OF THESE DRAWINGS. ALTHOUGH THE INTENT IS TO CATEGORIZE EVERYTHING AS EITHER EXISTING OR PROPOSED, IT IS THE END USER'S RESPONSIBILITY TO ENSURE ALL ELEMENTS ARE INTERPRETED CORRECTLY, REGARDLESS OF COLOR.
(22)	SEE BRIDGE PLANS FOR DETAILED INDEX SHEET(S), ESTIMATED AND SUMMARY OF QUANTITY SHEETS, AND EROSION CONTROL SHEETS.
(23)	ALL ADDENDA TO THESE PLANS WILL BE POSTED TO WWW.MDOT.MS.GOV UNDER THE PROPOSAL ADDENDA COLUMN. BIDDERS ARE ADVISED THAT HARD COPIES OF ANY ADDENDA FOR THIS PROJECT WILL NOT BE MAILED. IT IS THE BIDDER'S RESPONSIBILITY TO CHECK AND SEE IF ANY ADDENDA HAVE BEEN POSTED FOR THIS PROJECT.
(24)	THE COST FOR REMOVAL OF ALL HEADWALLS AND WINGWALLS (PIPES, BOX CULVERTS, BOX BRIDGES) SHALL BE ABSORBED IN OTHER ITEMS BID.
(25)	THE BRIDGE DECKS SHALL BE GROOVED AND ALL BRIDGE JOINTS SHALL BE SEALED PRIOR TO OPENING THE BRIDGES TO TRAFFIC.
(26)	STORAGE OF FLAMMABLE MATERIALS WILL NOT BE ALLOWED UNDER ANY BRIDGE STRUCTURES.
(27)	INSTALLATION DATES SHALL BE CLEARLY WRITTEN IN BOLD BLACK MARKINGS ON THE BACK BOTTOM HALF OF ALL SIGNS WITH A PERMANENT MARKING STICK THAT IS WATERPROOF, FADE RESISTANT AND MARKS ON WET OR DRY SURFACES.

				BY	MISSISSIPPI DEPARTMENT OF TRANSPORTATION	
					GENERAL NOTES	
				REVISION	PROJ. NO.: BR-0006-01(095) COUNTY: BOLIVAR	
				DATE	FILENAME: GN-1.dgn	
				DESIGN TEAM	NEEL-SCHAFFER	CHECKED DATE
						
					WORKING NUMBER GN-1	
					SHEET NUMBER 4	

STATE	PROJECT NO.
MISS.	BR-0006-01(095)

GENERAL NOTES (CONT.)

[illegible]

																																																																																																																																																																																																																																																																																																																																																																																																																																																																																																																																																																																																																																																																																																																																																																																																																																																																																																																																																																																																																																																																																																																																																																																																																																																																																																																																																																																																																					</
--	--	--	--	--	--	--	--	--	--	--	--	--	--	--	--	--	--	--	--	--	--	--	--	--	--	--	--	--	--	--	--	--	--	--	--	--	--	--	--	--	--	--	--	--	--	--	--	--	--	--	--	--	--	--	--	--	--	--	--	--	--	--	--	--	--	--	--	--	--	--	--	--	--	--	--	--	--	--	--	--	--	--	--	--	--	--	--	--	--	--	--	--	--	--	--	--	--	--	--	--	--	--	--	--	--	--	--	--	--	--	--	--	--	--	--	--	--	--	--	--	--	--	--	--	--	--	--	--	--	--	--	--	--	--	--	--	--	--	--	--	--	--	--	--	--	--	--	--	--	--	--	--	--	--	--	--	--	--	--	--	--	--	--	--	--	--	--	--	--	--	--	--	--	--	--	--	--	--	--	--	--	--	--	--	--	--	--	--	--	--	--	--	--	--	--	--	--	--	--	--	--	--	--	--	--	--	--	--	--	--	--	--	--	--	--	--	--	--	--	--	--	--	--	--	--	--	--	--	--	--	--	--	--	--	--	--	--	--	--	--	--	--	--	--	--	--	--	--	--	--	--	--	--	--	--	--	--	--	--	--	--	--	--	--	--	--	--	--	--	--	--	--	--	--	--	--	--	--	--	--	--	--	--	--	--	--	--	--	--	--	--	--	--	--	--	--	--	--	--	--	--	--	--	--	--	--	--	--	--	--	--	--	--	--	--	--	--	--	--	--	--	--	--	--	--	--	--	--	--	--	--	--	--	--	--	--	--	--	--	--	--	--	--	--	--	--	--	--	--	--	--	--	--	--	--	--	--	--	--	--	--	--	--	--	--	--	--	--	--	--	--	--	--	--	--	--	--	--	--	--	--	--	--	--	--	--	--	--	--	--	--	--	--	--	--	--	--	--	--	--	--	--	--	--	--	--	--	--	--	--	--	--	--	--	--	--	--	--	--	--	--	--	--	--	--	--	--	--	--	--	--	--	--	--	--	--	--	--	--	--	--	--	--	--	--	--	--	--	--	--	--	--	--	--	--	--	--	--	--	--	--	--	--	--	--	--	--	--	--	--	--	--	--	--	--	--	--	--	--	--	--	--	--	--	--	--	--	--	--	--	--	--	--	--	--	--	--	--	--	--	--	--	--	--	--	--	--	--	--	--	--	--	--	--	--	--	--	--	--	--	--	--	--	--	--	--	--	--	--	--	--	--	--	--	--	--	--	--	--	--	--	--	--	--	--	--	--	--	--	--	--	--	--	--	--	--	--	--	--	--	--	--	--	--	--	--	--	--	--	--	--	--	--	--	--	--	--	--	--	--	--	--	--	--	--	--	--	--	--	--	--	--	--	--	--	--	--	--	--	--	--	--	--	--	--	--	--	--	--	--	--	--	--	--	--	--	--	--	--	--	--	--	--	--	--	--	--	--	--	--	--	--	--	--	--	--	--	--	--	--	--	--	--	--	--	--	--	--	--	--	--	--	--	--	--	--	--	--	--	--	--	--	--	--	--	--	--	--	--	--	--	--	--	--	--	--	--	--	--	--	--	--	--	--	--	--	--	--	--	--	--	--	--	--	--	--	--	--	--	--	--	--	--	--	--	--	--	--	--	--	--	--	--	--	--	--	--	--	--	--	--	--	--	--	--	--	--	--	--	--	--	--	--	--	--	--	--	--	--	--	--	--	--	--	--	--	--	--	--	--	--	--	--	--	--	--	--	--	--	--	--	--	--	--	--	--	--	--	--	--	--	--	--	--	--	--	--	--	--	--	--	--	--	--	--	--	--	--	--	--	--	--	--	--	--	--	--	--	--	--	--	--	--	--	--	--	--	--	--	--	--	--	--	--	--	--	--	--	--	--	--	--	--	--	--	--	--	--	--	--	--	--	--	--	--	--	--	--	--	--	--	--	--	--	--	--	--	--	--	--	--	--	--	--	--	--	--	--	--	--	--	--	--	--	--	--	--	--	--	--	--	--	--	--	--	--	--	--	--	--	--	--	--	--	--	--	--	--	--	--	--	--	--	--	--	--	--	--	--	--	--	--	--	--	--	--	--	--	--	--	--	--	--	--	--	--	--	--	--	--	--	--	--	--	--	--	--	--	--	--	--	--	--	--	--	--	--	--	--	--	--	--	--	--	--	--	--	--	--	--	--	--	--	--	--	--	--	--	--	--	--	--	--	--	--	--	--	--	--	--	--	--	--	--	--	--	--	--	--	--	--	--	--	--	--	--	--	--	--	--	--	--	--	--	--	--	--	--	--	--	--	--	--	--	--	--	--	--	--	--	--	--	--	--	--	--	--	--	--	--	--	--	--	--	--	--	--	--	--	--	--	--	--	--	--	--	--	--	--	--	--	--	--	--	--	--	--	--	--	--	--	--	--	--	--	--	--	--	--	--	--	--	--	--	--	--	--	--	--	--	--	--	--	--	--	--	--	--	--	--	--	--	--	--	--	--	--	--	--	--	--	--	--	--	--	--	--	--	--	--	--	--	--	--	--	--	--	--	--	--	--	--	--	--	--	--	--	--	--	--	--	--	--	--	--	--	--	--	--	--	--	--	--	--	--	--	--	--	--	--	--	--	--	--	--	--	--	--	--	--	--	--	--	--	--	--	--	--	--	--	--	--	--	--	--	--	--	--	--	--	--	--	--	--	--	--	--	--	--	--	--	--	--	--	--	--	--	--	--	--	--	--	--	--	--	--	--	--	--	--	--	--	--	--	--	--	--	--	--	--	--	--	--	--	--	--	--	--	--	--	--	--	--	--	--	--	--	--	--	--	--	--	--	--	--	--	--	--	--	--	--	--	--	--	--	--	--	--	--	--	--	--	--	--	--	--	--	--	--	--	--	--	--	--	--	--	--	--	--	--	--	--	--	--	--	--	--	--	--	--	--	--	--	--	--	--	--	--	--	--	--	--	--	--	--	--	--	--	--	--	--	--	--	--	--	--	--	--	--	--	--	--	--	--	--	--	--	--	--	--	--	--	--	--	--	--	--	--	--	--	--	--	--	--	--	--	--	--	--	--	--	--	--	--	--	--	--	--	--	--	--	--	--	--	--	--	--	--	--	--	--	--	--	--	----