

STATE	PROJECT NUMBER	SHEET NO.
MISSISSIPPI	NH-0059-01(075)	1

GENERAL INDEX

INCLUDED THIS PROJECT	BEGIN WITH SHEET
<input checked="" type="checkbox"/> ROADWAY	1
<input checked="" type="checkbox"/> PERMANENT SIGNS	1001
<input checked="" type="checkbox"/> TRAFFIC SIGNALS	2001
<input checked="" type="checkbox"/> ITS COMPONENTS	3001
<input checked="" type="checkbox"/> LIGHTING	4001
<input type="checkbox"/> (RESERVED)	5001
<input checked="" type="checkbox"/> ROADWAY STANDARD DWGS	6001
<input type="checkbox"/> BOX CULVERT STD. DRAWINGS (LRFD)	7001
<input checked="" type="checkbox"/> BOX CULVERT STD. DRAWINGS (STD. SPEC.)	7501
<input checked="" type="checkbox"/> BRIDGE	8001
<input checked="" type="checkbox"/> CROSS SECTIONS	9001

BRIDGE STRUCTURES REQ'D.

- ① BRIDGE # 69.0
SR 42 ACROSS I-59
STA. 98+00.83 TO STA. 101+00.17
SPANS: 1 @ 297' (3 @ 99')
LENGTH: 299.34'

BOX BRIDGES REQ'D.

NONE

NOTES:

- ACCESS TO AND EXIT FROM THIS HIGHWAY WILL BE PERMITTED ONLY THROUGH INTERCHANGE OR SUCH OTHER POINTS AS MAY BE ESTABLISHED BY PUBLIC AUTHORITY AND AS SHOWN ON THE PLANS.
- THIS PROJECT IS DECLARED BY THE TRANSPORTATION COMMISSION TO BE A TYPE 1 CONTROLLED ACCESS FACILITY, AS DEFINED IN AND SUBJECT TO ALL RESTRICTIONS SHOW BY ORDER OF SAID COMMISSION DATED 10th DAY OF JULY, 2018 IN MINUTE BOOK 21, PAGE 864 AND AUTHORIZED UNDER SECTION 65-1-10(1)MCA (1972, AS AMENDED)

CONVENTIONAL SYMBOLS

COUNTY LINE	-----
TOWN CORPORATION LINE	-----
SECTION LINE	-----
EXISTING ROAD OR TRAVELED WAY	-----
PROPOSED ROAD OR TRAVELED WAY	-----
RAILROAD	-----
SURVEY LINE	-----
BRIDGES	-----

EQUATIONS

407+48.500 BK. = 408+48.500 AH. (-100')

LENGTH DATA

LENGTH OF ROADWAY	6337.63 FT.	1.200 MI.
LENGTH OF BRIDGES	299.34 FT.	.057 MI.
LENGTH OF PROJECT (NET)		1.200 MI.
LENGTH OF EXCEPTIONS	- - - FT.	- - - MI.
LENGTH OF PROJECT (GROSS)		1.200 MI.

EXCEPTIONS

NONE

STATE OF MISSISSIPPI

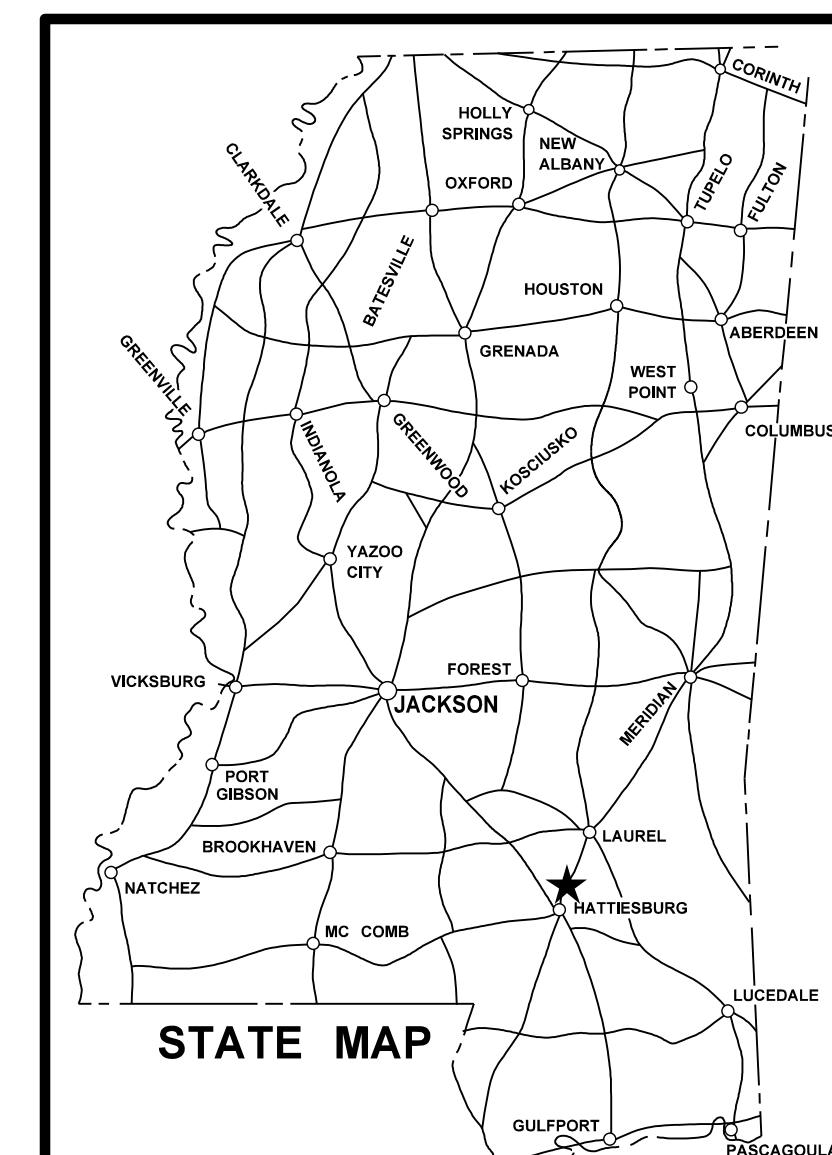
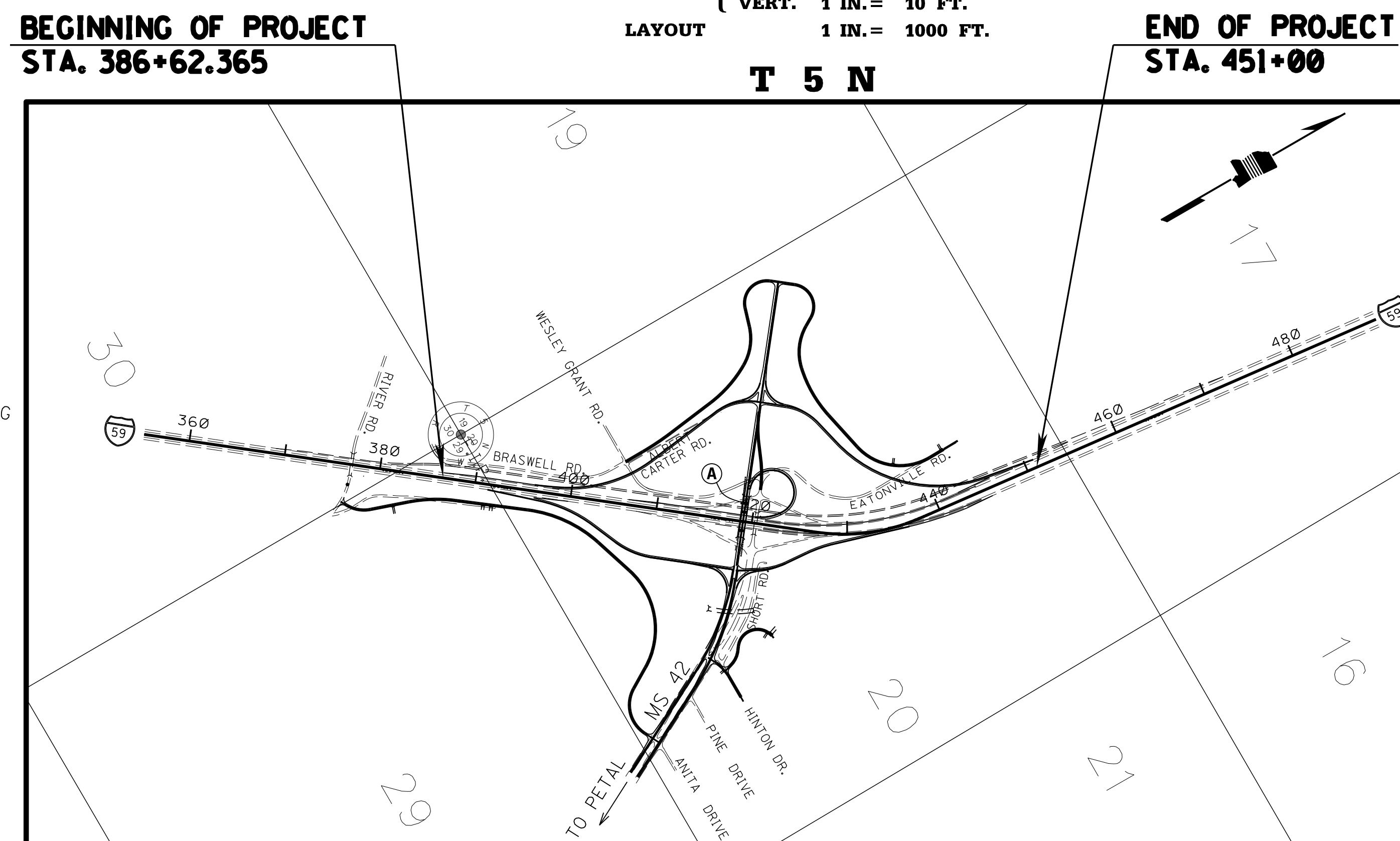
MISSISSIPPI DEPARTMENT OF TRANSPORTATION

PLAN AND PROFILE OF PROPOSED STATE HIGHWAY FEDERAL AID PROJECT NO. NH-0059-01(075) INTERSTATE 59 AT MS 42 INTERCHANGE FORREST COUNTY

FMS. CON. #: 102334 / 301000

SCALES

PLAN	1 IN. = 100 FT.
PROFILE	HOR. 1 IN. = 100 FT.
	VERT. 1 IN. = 10 FT.
LAYOUT	1 IN. = 1000 FT.



NOTE
★ INDICATES APPROXIMATE LOCATION OF PROJECT.
LAT. 31 22' 53" N LONG. 89 19' 26" W
(APPROX. MIDDLE OF PROJECT)

DESIGN CONTROL

65 MPH = V (SPEED DESIGN)
ADT (2012) = 14,000 ; ADT (2032) = 24,000
DHV = 2,400 ; D = 60 % T = 8 %

PERMITS ACQUIRED BY MDOT

WETLANDS AND WATERS PERMITS		
	WATERS	WETLANDS
NATIONWIDE #14	<input type="checkbox"/>	<input type="checkbox"/>
NATIONWIDE (OTHER)*	<input type="checkbox"/>	<input type="checkbox"/>
GENERAL*	<input type="checkbox"/>	<input type="checkbox"/>
INDIVIDUAL (404)*	<input type="checkbox"/>	<input type="checkbox"/>
STORMWATER PERMIT <input checked="" type="checkbox"/>		
Y	REQUIRED (NOI SUBMITTED BY MDOT (DISTURBED AREA = 5 ACRES))	
S	REQUIRED (NOI TO BE SUBMITTED BY CONTRACTOR (1 TO 4.99 ACRES))	
N	NO STORMWATER PERMIT REQUIRED (<1 ACRE)	

APPROVED BY: _____

P S & E DATE: 7/31/18

APPROVED:
DEPUTY EXECUTIVE DIRECTOR / CHIEF ENGINEER
EXECUTIVE DIRECTOR



12/12/2018 11:53 AM TITLE.DGN

STATE	PROJECT NO.
MISS.	NH-0059-01(075)

DESCRIPTION OF SHEET

WKG. NO. SH. NO.

TITLE SHEET (1)			1
DETAILED INDEX & GENERAL NOTES SHEETS (6)			
DETAILED INDEX	DI-1		2
DETAILED INDEX	DI-2		3
DETAILED INDEX	DI-3		4
DETAILED INDEX	DI-4		5
GENERAL NOTES	GN-1		6
GENERAL NOTES	GN-2		7
TYPICAL SECTION SHEETS (7)			
TYPICAL SECTION - I-59 INTERCHANGE AT SR 42, SR 42 ACROSS BRIDGE	TS-1		8
TYPICAL SECTION - SR 42	TS-2		9
TYPICAL SECTION - TEMP. CONN., NE FRONTAGE RD., SE FRONTAGE RD., WEST FRONTAGE RD., SE CONNECTOR	TS-3		10
TYPICAL SECTION - LOOP RAMP, INTERCHANGE RAMPS	TS-4		11
TYPICAL SECTION - ACCELERATION LANES, NE & SE TEMP. CONNECTIONS	TS-5		12
TYPICAL SECTION - THRU CHANNELIZED INTERSECTION	TS-6		13
TYPICAL SECTION - MISCELLANEOUS DETAILS	TS-7		14
QUANTITY SHEETS (22)			
SUMMARY OF QUANTITIES	SQ-1		15
SUMMARY OF QUANTITIES	SQ-2		16
SUMMARY OF QUANTITIES	SQ-3		17
SUMMARY OF QUANTITIES	SQ-4		18
SUMMARY OF QUANTITIES	SQ-5		19
SUMMARY OF QUANTITIES	SQ-6		20
ESTIMATED QUANTITIES - REMOVAL OF PIPES, CURBS, GUARD RAIL, AND PAVEMENT	EQ-1		21
ESTIMATED QUANTITIES - EARTHWORK	EQ-2		22
ESTIMATED QUANTITIES - JUNCTION BOXES, CURB & GUTTER, AND BOX CULVERTS	EQ-3		23
ESTIMATED QUANTITIES - DRAINAGE STRUCTURES, SILT BASINS, AND PAVED FLUMES	EQ-4		24
ESTIMATED QUANTITIES - CULVERT HYDRAULIC DESIGN SUMMARY	EQ-5		25
ESTIMATED QUANTITIES - DRIVEWAYS, SIDE DRAINS, GUARD RAIL, AND BRIDGE END PAVEMENT	EQ-6		26
ESTIMATED QUANTITIES - PAVEMENT MARKINGS, DETOUR SIGNS, & U-POSTS	EQ-7		27
ESTIMATED QUANTITIES - TRAFFIC CONTROL ITEMS	EQ-8		28
ESTIMATED QUANTITIES - TRAFFIC CONTROL SIGNS	EQ-9		29
ESTIMATED QUANTITIES - STANDARD ROADSIDE SIGN ASSEMBLY, (1 OF 2)	EQ-10		30
ESTIMATED QUANTITIES - STANDARD ROADSIDE SIGN ASSEMBLY, (2 OF 2)	EQ-11		31
ESTIMATED QUANTITIES - STANDARD ROADSIDE SIGNS	EQ-12		32
ESTIMATED QUANTITIES - DIRECTIONAL SIGN ASSEMBLY	EQ-13		33
ESTIMATED QUANTITIES - SIGNAL & ITS ITEMS	EQ-14		34
ESTIMATED QUANTITIES - LIGHTING	EQ-15		35
ESTIMATED QUANTITIES - LIGHTING	EQ-16		36
PLAN & PROFILE SHEETS (22)			
INTERCHANGE LAYOUT I-59 @ SR 42	3		37
INTERSTATE 59 STA. 375+00 TO STA. 405+00	4		38
INTERSTATE 59 STA. 405+00 TO STA. 435+00	5		39
SR 42 STA. 75+00 TO STA. 105+00	5A		40
SR 42 STA. 105+00 TO STA. 128+91.388 RT. LN.	5B		41
SR 42 STA. 105+00 TO STA. 128+91.388 LT. LN.	5C		42
INTERSTATE 59 STA. 435+00 TO STA. 454+00	6		43
SOUTHEAST RAMP	7		44
SOUTHEAST RAMP TEMPORARY CONNECTION	7A		45
NORTHEAST RAMP	8		46
NORTHEAST RAMP TEMPORARY CONNECTION	8A		47
SOUTHWEST RAMP	9		48
NORTHWEST RAMP	10		49
NORTHWEST RAMP LOOP	11		50
SOUTHEAST FRONTAGE ROAD STA. 77+00 TO STA. 106+00	12		51
SOUTHEAST FRONTAGE ROAD STA. 106+00 TO STA. 129+00	13		52
WEST FRONTAGE ROAD STA. 207+00 TO STA. 237+00	14		53
WEST FRONTAGE ROAD STA. 237+00 TO STA. 266+00	15		54
SOUTHEAST CONNECTION	16		55
NORTHEAST FRONTAGE ROAD	17		56
TEMPORARY CONNECTION TO I-59 SB	18		57
TEMPORARY CONNECTION TO SR 42 WB	19		58

DESCRIPTION OF SHEET

WKG. NO. SH. NO.

SPECIAL DESIGN SHEETS (31)			
INTERSTATE 59 STA. 375+00 TO STA. 405+00		RW-3	59
INTERSTATE 59 STA. 405+00 TO STA. 435+00		RW-4	60
INTERSTATE 59 STA. 435+00 TO STA. 454+00		RW-5	61
SOUTHEAST RAMP		RW-6	62
NORTHEAST RAMP		RW-7	63
SOUTHWEST RAMP		RW-8	64
NORTHWEST RAMP		RW-9	65
NORTHWEST RAMP LOOP		RW-10	66
SOUTHEAST FRONTAGE ROAD STA. 77+00 TO STA. 106+00		RW-11	67
SOUTHEAST FRONTAGE ROAD STA. 106+00 TO STA. 129+00		RW-12	68
WEST FRONTAGE ROAD STA. 207+00 TO STA. 237+00		RW-13	69
WEST FRONTAGE ROAD STA. 237+00 TO STA. 266+00		RW-14	70
SOUTHEAST CONNECTION		RW-15	71
NORTHEAST FRONTAGE ROAD		RW-16	72
TEMPORARY CONNECTION		RW-17	73
RIGHT OF WAY MARKERS		ROW-1	74
RIGHT OF WAY MARKERS		ROW-2	75
VEGETATION SCHEDULE		VS-1	76
CONTROL POINTS		CP-1	77
SPECIAL DESIGN : PAVEMENT MARKING DETAILS FOR INTERCHANGE ENTRANCE RAMPS (PARALLEL AND TAPER)		SDPM-3	78
SPECIAL DESIGN : PAVEMENT MARKING DETAILS FOR INTERCHANGE EXIT RAMPS (PARALLEL AND TAPER)		SDPM-4	79
PIPE CULVERT INSTALLATION		SDPI-1	80
BOX BENDING DETAIL (DOUBLE CELL BOX)		SDBB-1	81
INTERCHANGE DESIGN FOR HIGH-SPEED TAPERED EXIT RAMP		SDIR-1	82
INTERCHANGE DESIGN FOR HIGH-SPEED PARALLEL EXIT RAMP		SDIR-1A	83
INTERCHANGE DESIGN FOR LOOP ENTRANCE RAMP		SDIR-2	84
INTERCHANGE DESIGN FOR HIGH-SPEED PARALLEL ENTRANCE RAMP		SDIR-2A	85
SUPERELEVATION RUNOFF CASE I ROTATION ABOUT CENTERLINE		SDRO-1	86
SUPERELEVATION CASE I ROTATION ABOUT CENTERLINE		SDSE-2A	87
GUARDRAIL: TYPICAL INSTALLATION AT BRIDGE APPROACHES FOR DIVIDED HIGHWAYS		SDGR-4	88
GUARDRAIL: TYPICAL INSTALLATION FOR ROADSIDE HAZARDS ON DIVIDED HIGHWAYS		SDGR-4C	89
EROSION CONTROL PLAN SHEETS (20)			
INTERSTATE 59 STA. 375+00 TO STA. 405+00		ECP-4	90
INTERSTATE 59 STA. 405+00 TO STA. 435+00		ECP-5	91
SR 42 STA. 75+00 TO STA. 105+00		ECP-5A	92
SR 42 STA. 105+00 TO STA. 128+91.388 RT. LN.		ECP-5B	93
SR 42 STA. 105+00 TO STA. 128+91.388 LT. LN.		ECP-5C	94
INTERSTATE 59 STA. 435+00 TO STA. 454+00		ECP-6	95
SOUTHEAST RAMP		ECP-7	96
SOUTHEAST RAMP TEMPORARY CONNECTION		ECP-7A	97
NORTHEAST RAMP		ECP-8	98
NORTHEAST RAMP TEMPORARY CONNECTION		ECP-8A	99
SOUTHWEST RAMP		ECP-9	100
NORTHWEST RAMP		ECP-10	101
NORTHWEST RAMP LOOP		ECP-11	102
SOUTHEAST FRONTAGE ROAD STA. 77+00 TO STA. 106+00		ECP-12	103
SOUTHEAST FRONTAGE ROAD STA. 106+00 TO STA. 129+00		ECP-13	104
WEST FRONTAGE ROAD STA. 207+00 TO STA. 237+00		ECP-14	105
WEST FRONTAGE ROAD STA. 237+00 TO STA. 266+00		ECP-15	106
SOUTHEAST CONNECTION		ECP-16	107
NORTHEAST FRONTAGE ROAD		ECP-17	108
TEMPORARY CONNECTION TO I-59 SB		ECP-18	109

12/12/2018 3:25 PM DI_59.dgn

ROADWAY PLAN DIVISION MISSISSIPPI DEPARTMENT OF TRANSPORTATION

KIRBY

PS & E PLANS-DATE: 7/31/18		
FMS CON. *102334/301000		
REVISIONS		
DATE	SHEET NO.	BY
9-12-18	15, 37, 41, 42, 44, 46	BK
12-12-18	3,5,15,24,44,46,48,49,55,56,57,92,93,94,96,98,100,101,102,107,108,109,117-128.1	EHG

REVISION	MISSISSIPPI DEPARTMENT OF TRANSPORTATION	
	DETAILED INDEX	
	PROJECT NO.: NH-0059-01(075)	
	COUNTY: FORREST	
DATE	FILENAME: DI_59.dgn	WORKING NUMBER DI-1 SHEET NUMBER 2
DESIGN TEAM	KIRBY	
CHECKED	DATE	



1st O.REV.

STATE	PROJECT NO.
MISS.	NH-0059-01(075)

DESCRIPTION OF SHEET

WKG. NO. SH. NO.


DESCRIPTION OF SHEET	WKG. NO.	SH. NO.
INTERSECTION DETAIL SHEETS (7)		
INTERSECTION DETAIL: NW LOOP	ID-1	110
INTERSECTION DETAIL: SE/NE RAMP @ SR 42	ID-2	111
INTERSECTION DETAIL: WEST FRONTAGE ROAD @ SR 42	ID-3	112
INTERSECTION DETAIL: NW/SW RAMP @ SR 42	ID-4	113
INTERSECTION DETAIL: NE FRONTAGE ROAD @ SE CONNECTOR	ID-5	114
INTERSECTION DETAIL: SE CONNECTOR @ SR 42	ID-6	115
INTERSECTION DETAIL: SE FRONTAGE ROAD @ SR 42	ID-7	116
FORM GRADE SHEETS (13)		
FORM GRADES: SR 42 @ NW/SW RAMPS	FG-1	117
FORM GRADES: SR 42 @ LOOP	FG-2	118
FORM GRADES: SR 42 @ NE/SE RAMPS	FG-3	119
FORM GRADES: LOOP @ I-59	FG-4	120
FORM GRADES: NW RAMP	FG-5	121
FORM GRADES: SW RAMP	FG-6	122
FORM GRADES: SW RAMP @ I-59 & SE RAMP @ I-59	FG-7	123
FORM GRADES: NE RAMP	FG-8	124
FORM GRADES: NE RAMP @ I-59	FG-9	125
FORM GRADES: NE RAMP @ I-59	FG-10	126
FORM GRADES: SE RAMP	FG-11	127
FORM GRADES: SE RAMP @ I-59	FG-12	128
FORM GRADES: NW RAMP @ I-59	FG-13	128.1
TRAFFIC CONTROL PLAN SHEETS (53)		
DETAIL OF CONSTRUCTION SIGNING		
TRAFFIC CONTROL PLAN: AREA LAYOUT PLAN	DCS-1	129
TRAFFIC CONTROL PLAN: PHASE 1A NARRATIVE WITH AREA LAYOUT	TC-AREA	130
TRAFFIC CONTROL PLAN: PHASE 1A, AREA 1	TC1A-1	132
TRAFFIC CONTROL PLAN: PHASE 1A, AREA 2	TC1A-2	133
TRAFFIC CONTROL PLAN: PHASE 1A, AREA 3	TC1A-3	134
TRAFFIC CONTROL PLAN: PHASE 1A, AREA 5	TC1A-5	135
TRAFFIC CONTROL PLAN: PHASE 1B NARRATIVE WITH AREA LAYOUT	TCNAR-1B	136
TRAFFIC CONTROL PLAN: PHASE 1B, AREA 1	TC1B-1	137
TRAFFIC CONTROL PLAN: PHASE 1B, AREA 2	TC1B-2	138
TRAFFIC CONTROL PLAN: PHASE 1B, AREA 3	TC1B-3	139
TRAFFIC CONTROL PLAN: PHASE 1C NARRATIVE WITH AREA LAYOUT	TCNAR-1C	140
TRAFFIC CONTROL PLAN: PHASE 1C, AREA 1	TC1C-1	141
TRAFFIC CONTROL PLAN: PHASE 1C, AREA 2	TC1C-2	142
TRAFFIC CONTROL PLAN: PHASE 1C, AREA 3	TC1C-3	143
TRAFFIC CONTROL PLAN: PHASE 1C, AREA 4	TC1C-4	144
TRAFFIC CONTROL PLAN: PHASE 1C, AREA 5	TC1C-5	145
TRAFFIC CONTROL PLAN: PHASE 1C, AREA 7	TC1C-7	146
TRAFFIC CONTROL PLAN: PHASE 2A NARRATIVE WITH AREA LAYOUT	TCNAR-2A	147
TRAFFIC CONTROL PLAN: PHASE 2A-1 DETOUR PLAN	DET-2A-1	148
TRAFFIC CONTROL PLAN: PHASE 2A EATONVILLE RD. SIGN	DET-2A-2	149
TRAFFIC CONTROL PLAN: PHASE 2A, AREA 2	TC2A-2	150
TRAFFIC CONTROL PLAN: PHASE 2A, AREA 3	TC2A-3	151
TRAFFIC CONTROL PLAN: PHASE 2A, AREA 4	TC2A-4	152
TRAFFIC CONTROL PLAN: PHASE 2A, AREA 5	TC2A-5	153
TRAFFIC CONTROL PLAN: PHASE 2A, AREA 7	TC2A-7	154
TRAFFIC CONTROL PLAN: PHASE 2B NARRATIVE WITH AREA LAYOUT	TCNAR-2B	155
TRAFFIC CONTROL PLAN: PHASE 2B DETOUR PLAN	DET-2B-1	156
TRAFFIC CONTROL PLAN: PHASE 2B DIRECTIONAL SIGN	DET-2B-2	157
TRAFFIC CONTROL PLAN: PHASE 2B, AREA 1	TC2B-1	158
TRAFFIC CONTROL PLAN: PHASE 2B, AREA 3	TC2B-3	159
TRAFFIC CONTROL PLAN: PHASE 2B, AREA 4	TC2B-4	160
TRAFFIC CONTROL PLAN: PHASE 2B, AREA 5	TC2B-5	161
TRAFFIC CONTROL PLAN: PHASE 2B, AREA 7	TC2B-7	162
TRAFFIC CONTROL PLAN: PHASE 2B, AREA 8	TC2B-8	163
TRAFFIC CONTROL PLAN: PHASE 3A NARRATIVE WITH AREA LAYOUT	TCNAR-3A	164
TRAFFIC CONTROL PLAN: PHASE 3A DETOUR PLAN	DET-3A	165
TRAFFIC CONTROL PLAN: PHASE 3A, AREA 1	TC3A-1	166
TRAFFIC CONTROL PLAN: PHASE 3A, AREA 2	TC3A-2	167
TRAFFIC CONTROL PLAN: PHASE 3A, AREA 3	TC3A-3	168
TRAFFIC CONTROL PLAN: PHASE 3A, AREA 4	TC3A-4	169
TRAFFIC CONTROL PLAN: PHASE 3A, AREA 7	TC3A-7	170
TRAFFIC CONTROL PLAN: PHASE 3A, AREA 8	TC3A-8	171
TRAFFIC CONTROL PLAN: PHASE 3B NARRATIVE WITH AREA LAYOUT	TCNAR-3B	172
TRAFFIC CONTROL PLAN: PHASE 3B DETOUR PLAN	DET-3B	173
TRAFFIC CONTROL PLAN: PHASE 3B, AREA 2	TC3B-2	174
TRAFFIC CONTROL PLAN: PHASE 3B, AREA 3	TC3B-3	175
TRAFFIC CONTROL PLAN: PHASE 3B, AREA 7	TC3B-7	176
TRAFFIC CONTROL PLAN: PHASE 3B, AREA 8	TC3B-8	177
TRAFFIC CONTROL PLAN: PHASE 3C NARRATIVE WITH AREA LAYOUT	TCNAR-3C	178
TRAFFIC CONTROL PLAN: PHASE 3C, AREA 2	TC3C-2	179
TRAFFIC CONTROL PLAN: PHASE 3C, AREA 7	TC3C-7	180
TRAFFIC CONTROL PLAN: PHASE 3C, AREA 8	TC3C-8	181

DESCRIPTION OF SHEET

WKG. NO. SH. NO.

DESCRIPTION OF SHEET	WKG. NO.	SH. NO.
PAVEMENT MARKING SHEETS (14)		
PERMANENT PAVEMENT MARKINGS: I-59 WEST FRONTAGE RD. (1 OF 2)	PMD-1	182
PERMANENT PAVEMENT MARKINGS: I-59 WEST FRONTAGE RD. (2 OF 2)	PMD-2	183
PERMANENT PAVEMENT MARKINGS: I-59 SOUTHWEST RAMP	PMD-3	184
PERMANENT PAVEMENT MARKINGS: I-59 NORTHWEST RAMP	PMD-4	185
PERMANENT PAVEMENT MARKINGS: I-59 SOUTHEAST RAMP	PMD-5	186
PERMANENT PAVEMENT MARKINGS: I-59 NORTHEAST RAMP	PMD-6	187
PERMANENT PAVEMENT MARKINGS: I-59 SE FRONTAGE RD. (1 OF 2)	PMD-7	188
PERMANENT PAVEMENT MARKINGS: I-59 SE FRONTAGE RD. (2 OF 2)	PMD-8	189
PERMANENT PAVEMENT MARKINGS: I-59 SE CONNECTION & NE FRONTAGE RD.	PMD-9	190
PERMANENT PAVEMENT MARKINGS: SR 42 (1 OF 5)	PMD-10	191
PERMANENT PAVEMENT MARKINGS: SR 42 (WITH LOOP) (2 OF 5)	PMD-11	192
PERMANENT PAVEMENT MARKINGS: INTERSECTION OF SR 42 & NE & NW RAMPS (3 OF 5)	PMD-12	193
PERMANENT PAVEMENT MARKINGS: INTERSECTION OF SR 42 & NE & NW RAMPS (4 OF 5)	PMD-13	194
PERMANENT PAVEMENT MARKINGS: SR 42 EAST END (5 OF 5)	PMD-14	195
PERMANENT SIGNING PLAN SHEETS (17)		
PERMANENT SIGNING PLAN - I-59, STA. 371+00 TO STA. 402+50	PSP-1	1001
PERMANENT SIGNING PLAN - I-59, STA. 402+50 TO STA. 434+00	PSP-2	1002
PERMANENT SIGNING PLAN - I-59, STA. 434+00 TO STA. 465+00	PSP-3	1003
PERMANENT SIGNING PLAN - SR 42, STA. 75+00 TO STA. 91+00	PSP-4	1004
PERMANENT SIGNING PLAN - SR 42, STA. 110+00 TO STA. 122+00	PSP-5	1005
PERMANENT SIGNING PLAN - SR 42, STA. 122+00 TO STA. 127+00	PSP-6	1006
PERMANENT SIGNING PLAN - SR 42, STA. 340+00 TO STA. 385+00	PSP-7	1007
PERMANENT SIGNING PLAN - SR 11	PSP-8	1008
PERMANENT SIGNING PLAN - SR 11	PSP-9	1009
INSTALLATION OF DELINEATORS - I-59, STA. 371+00 TO STA. 402+50	PSP-10	1010
INSTALLATION OF DELINEATORS - I-59, STA. 402+50 TO STA. 434+00	PSP-11	1011
INSTALLATION OF DELINEATORS - I-59, STA. 434+00 TO STA. 465+00	PSP-12	1012
INSTALLATION OF DELINEATORS - SR 42, STA. 75+00 TO STA. 91+00	PSP-13	1013
INSTALLATION OF DELINEATORS - SR 42, STA. 108+00 TO STA. 128+91	PSP-14	1014
OVERHEAD SIGN ASSEMBLY - SR 42 OVERHEAD SIGN ASSEMBLY #1	OH-1	1015
DIRECTIONAL SIGNING DETAILS	DSD-1	1016
DIRECTIONAL SIGNING DETAILS	DSD-2	1017
TRAFFIC SIGNAL PLAN SHEETS (10)		
TRAFFIC SIGNAL IMPROVEMENTS - SR 42 AT MONROE ROAD	TSI-1	2001
TRAFFIC SIGNAL IMPROVEMENTS - SR 42 AT LEEVILLE ROAD	TSI-2	2002
TRAFFIC SIGNAL IMPROVEMENTS - SR 42 AT OLD RICHTON ROAD	TSI-3	2003
TRAFFIC SIGNAL GENERAL NOTES		
TRAFFIC SIGNAL HEADS, TRAFFIC SIGNAL SIGNS AND WIND SPEEDS	TSD-1	2004
CURVED MAST ARM AND PEDESTAL POLE DETAILS	TSD-2	2005
TRAFFIC SIGNAL GROUNDING DETAILS	TSD-3C	2006
CONTROLLER CABINET AND POWER SERVICE DETAILS	TSD-5	2007
PULL BOX AND CONDUIT TRENCHING DETAILS	TSD-6	2008
TRAFFIC CONTROL PLAN (TYPICAL SIGNAL INSTALLATION)	TSD-8	2009
	TSD-10	2010
ITS PLAN SHEETS (48)		
ITS LEGEND	LEG-ITS	3001
ITS GENERAL NOTES	GN-ITS	3002
PROJECT LOCATION MAP - I-59 AND SR 42	LP-1	3003
PROJECT LOCATION PLAN - I-59 AND SR 42	LP-2	3004
ITS PLAN - I-59, STA. 370+00 TO STA. 400+00	ITS-1	3005
ITS PLAN - I-59, STA. 400+00 TO STA. 430+00	ITS-2	3006
ITS PLAN - I-59, STA. 430+00 TO STA. 460+00	ITS-3	3007
ITS PLAN - I-59, STA. 460+00 TO STA. 491+50	ITS-4	3008
ITS PLAN - I-59, STA. 491+50 TO STA. 515+00	ITS-5	3009
ITS PLAN - SR 42, STA. 100+00 TO STA. 195+00	ITS-6	3010

12/12/2018 11:54 AM DI_59.DGN MISSISSIPPI DEPARTMENT OF TRANSPORTATION

MISSISSIPPI DEPARTMENT OF TRANSPORTATION DETAILED INDEX		
PROJ. NO.: NH-0059-01(075) COUNTY: FORREST		
FILENAME: DI_59.dgn DESIGN TEAM: KIRBY CHECKED: _____ DATE: _____	WORKING NUMBER DI-2 SHEET NUMBER 3	

STATE	PROJECT NO.
MISS.	NH-0059-01(075)

DESCRIPTION OF SHEET

WKG. NO. SH. NO.

ITS PLAN SHEETS (CONTINUED)			
ITS PLAN - SR 42, STA. 195+00 TO STA. 225+00		ITS-7	3011
ITS PLAN - SR 42, STA. 225+00 TO STA. 255+00		ITS-8	3012
ITS PLAN - SR 42, STA. 255+00 TO STA. 285+00		ITS-9	3013
ITS PLAN - SR 42, STA. 285+00 TO STA. 315+00		ITS-10	3014
ITS PLAN - SR 42, STA. 315+00 TO STA. 345+00		ITS-11	3015
ITS PLAN - SR 42, STA. 345+00 TO STA. 375+00		ITS-12	3016
ITS PLAN - SR 42, STA. 375+00 TO STA. 405+00		ITS-13	3017
ITS PLAN - SR 42, STA. 405+00 TO STA. 435+00		ITS-14	3018
AERIAL SUPPORTED CONDUIT - TYPE 1 (RGS) NOTES AND TYPICAL DETAILS		ASC-1	3019
AERIAL SUPPORTED CONDUIT - TYPE 1 (RGS) CONDUIT SURFACE MOUNTED PULL BOX AND EXPANSION DETAILS		ASC-2	3020
AERIAL SUPPORTED CONDUIT - BRIDGE ELEVATION SR 42 OVER BAY CREEK STA. 251+03.79 TO STA. 252+83.28		ASC-3	3021
AERIAL SUPPORTED CONDUIT - BRIDGE ELEVATION SR 42 OVER LEAF RIVER STA. 317+90.21 TO STA. 321+85.04		ASC-4A	3022
AERIAL SUPPORTED CONDUIT - BRIDGE ELEVATION SR 42 OVER LEAF RIVER STA. 321+85.04 TO STA. 327+75.59		ASC-4B	3023
AERIAL SUPPORTED CONDUIT - BRIDGE ELEVATION SR 42 OVER LEAF RIVER STA. 327+75.59 TO STA. 332+19.64		ASC-4C	3024
AERIAL SUPPORTED CONDUIT - BRIDGE ELEVATION SR 42 OVER GREENS CREEK STA. 336+11.08 TO STA. 341+05.46		ASC-5	3025
AERIAL SUPPORTED CONDUIT - BRIDGE ELEVATION SR 42 OVER US 11 & THE ALABAMA GREAT SOUTHERN RAILROAD COMPANY STA. 360+60.19 TO STA. 365+34.95		ASC-6	3026
AERIAL SUPPORTED CONDUIT - BRIDGE ELEVATION SR 42 OVER GREENS CREEK STA. 372+15.24 TO STA. 375+64.68		ASC-7	3027
AERIAL SUPPORTED CONDUIT - BRIDGE ELEVATION SR 42 OVER GREENS CREEK STA. 409+07.67 TO STA. 411+55.98		ASC-8	3028
CABINET DETAILS - TYPE B AND C CABINET DETAILS		CAB-1	3029
CCTV DETAILS - CAMERA POLE WITH CAMERA, RDS, & BDS MOUNTING DETAILS		CCTV-1	3030
CCTV DETAILS - MAST ARM TRAFFIC SIGNAL POLE MOUNTED CCTV DETAILS		CCTV-2	3031
CCTV DETAILS - CCTV SITE #2, I-59 & SR 42 INTERCHANGE		CCTV-3	3032
CCTV DETAILS - CCTV SITE #6, SR 42 - STA. 360+40		CCTV-4	3033
CCTV DETAILS - AIR GROUND DETAILS 50' TALL CAMERA POLE		CCTV-5	3034
DMS DETAILS - DMS #1 TYPE 2 DMS		DMS-1	3035
DMS DETAILS - DMS #2 TYPE 2 DMS		DMS-2	3036
DMS DETAILS - DMS #3 TYPE 3 DMS		DMS-3	3037
DMS DETAILS - DMS #4 TYPE 3 DMS		DMS-4	3038
DMS CONSTRUCTION DETAILS		DMSCD-1	3039
ITS EQUIPMENT DETAILS - SITE BLOCK DIAGRAMS		ED-1	3040
FIBER OPTIC DETAILS - PULLBOX AND CONDUIT TRENCHING DETAILS		FO-1	3041
FIBER OPTIC DETAILS - CABINET ENTRANCE DETAILS		FO-2	3042
FIBER OPTIC DETAILS - CABLE MANAGEMENT DETAILS		FO-3	3043
FIBER OPTIC DETAILS - TERMINATION CABINET		FO-4	3044
FIBER OPTIC DETAILS - SYSTEM BLOCK DIAGRAM		FO-5	3045
FIBER OPTIC DETAILS - SYSTEM BLOCK DIAGRAM		FO-6	3046
ELECTRICAL DETAILS - POWER PANEL AND POWER SERVICE METER POLE DETAILS		POW-1	3047
ELECTRICAL DETAILS - POWER SERVICE PEDESTAL DETAILS		POW-2	3048
LIGHTING PLAN SHEETS (8)			
GENERAL NOTES, ABBREVIATIONS AND LEGEND		LN-1	4001
LIGHTING LAYOUT - I-59, STA. 381+00 TO STA. 412+00		L-1	4002
LIGHTING LAYOUT - SR 42, STA. 83+00 TO STA. 115+00		L-2	4003
LIGHTING LAYOUT - I-59, STA. 425+00 TO STA. 453+00		L-3	4004
LIGHTING DETAILS		LD-1	4005
LIGHTING DETAILS		LD-2	4006
LIGHTING DETAILS		LD-3	4007
LIGHTING DETAILS		LD-4	4008
STANDARD DRAWINGS - ROADWAY SHEETS (95)			
BRIDGE END PAVEMENT WITH RAIL, OVERLAY, AND SLEEPER SLAB (NEW CONSTRUCTION)		BE-1	6007
BRIDGE END PAVEMENT RAIL (33.5" RAIL HEIGHT)		BER-1	6009
CONCRETE ISLAND PAVEMENT DETAILS		CIP-1	6011
PAVEMENT MARKING DETAILS FOR 2-LANE & 4-LANE DIVIDED ROADWAYS		PM-1	6051
PAVEMENT MARKING LEGEND DETAILS		PM-5	6055
PAVEMENT MARKING LEGEND DETAILS		PM-6	6056
4-LANE TO 2-LANE TRANSITION AT INTERCHANGE		PM-8	6058
TYPICAL PAVEMENT MARKING DETAIL FOR MEDIAN CROSSOVERS		PM-9	6059
2-WAY RAISED PAVEMENT MARKERS AT INTERSECTING ROADS (2-LANE)		PM-11	6061
2-WAY RAISED PAVEMENT MARKERS AT INTERSECTING ROADS (4-LANE)		PM-12	6062
RUMBLE STRIPES 2-LANE HIGHWAYS (ASPHALT LANES, 2-FT ASPHALT SHOULDERS)		RS-1	6064
RUMBLE STRIPES 4-LANE HIGHWAYS (ASPHALT LANES, 2-FT OR WIDER ASPHALT SHOULDERS)		RS-2	6065
TYPICAL TEMPORARY EROSION CONTROL/SEDIMENT CONTROL APPLICATIONS		ECD-1	6101
DETAILS OF SEDIMENT BARRIER APPLICATIONS		ECD-2	6102
DETAILS OF SILT FENCE INSTALLATION		ECD-3	6103
DITCH CHECK STRUCTURES, TYPICAL APPLICATIONS AND DETAILS		ECD-4	6104
TEMPORARY EROSION, SEDIMENT, & WATER POLLUTION CONTROL MEASURES (SILT FENCE & HAY BALE DITCH CKS.)		ECD-5	6105

DESCRIPTION OF SHEET

WKG. NO. SH. NO.

STANDARD DRAWINGS - ROADWAY SHEETS (CONTINUED)			
DETAILS OF EROSION CONTROL WATTLE DITCH CHECK		ECD-6	6106
DETAILS OF EROSION CONTROL SILT DIKE DITCH CHECK		ECD-7	6107
ROCK DITCH CHECK		ECD-8	6108
ROCK FILTER DAM		ECD-9	6109
ROCK DITCH CHECK WITH SUMP EXCAVATION AND ROCK FILTER DAM		ECD-10	6110
TYPICAL APPLICATIONS & DETAILS FOR INLET CONSTRUCTION		ECD-11	6111
INLET PROTECTION DETAILS FOR SEDIMENT CONTROL STONE ON GRADES AND SAGS		ECD-12	6112
INLET PROTECTION DETAILS OF WATTLES		ECD-13	6113
INLET PROTECTION DETAILS OF MANUFACTURED INLET PROTECTION DEVICE		ECD-14	6114
INLET PROTECTION DETAILS OF SANDBAGS		ECD-15	6115
STABILIZED CONSTRUCTION ENTRANCE		ECD-16	6116
TEMPORARY STREAM DIVERSION		ECD-18	6118
TEMPORARY STREAM DIVERSION (BOX EXTENSION)		ECD-19	6119
FLOATING TURBIDITY CURTAIN		ECD-20	6120
DETAILS OF EROSION CONTROL SANDBAG DITCH CHECK		ECD-21	6121
SEDIMENT RETENTION BARRIER		ECD-22	6122
DETAILS OF TYPICAL DITCH TREATMENTS		DT-1	6123
TYPICAL TEMPORARY EROSION CONTROL MEASURES (TYPE D SILT BASIN) (135 CY CAPACITY PER ACRE OF DRAINAGE)		BAS-D	6129
EROSION CONTROL BLANKET		ECB-1	6131
FENCE: WOVEN WIRE - TIMBER POSTS		WW-1	6181
FENCE: BARBED WIRE OR WOVEN WIRE - TEE POSTS		WW-3	6183
FENCE: CHAIN LINK - CLASS II		CL-2	6185
FENCE: TYPICAL INSTALLATION AT DRAINAGE STRUCTURES		FI-2	6188
FENCE: TYPICAL INSTALLATION AT DITCH CROSSINGS AND FENCE ENDINGS		FI-3	6189
GUARDRAIL: "W" BEAM (WOOD POSTS)		GR-1	6201
GUARDRAIL: THRIE BEAM (WOOD POSTS)		GR-1A	6202
GUARDRAIL: "W" BEAM (STEEL POSTS)		GR-1B	6203
GUARDRAIL: BRIDGE END SECTION-TYPE I (WOOD POSTS) (NEW CONSTRUCTION)		GR-2F	6210
GUARDRAIL: BRIDGE END SECTION-TYPE I (STEEL POSTS) (NEW CONSTRUCTION)		GR-2G	6211
GUARDRAIL: RUB RAIL HARDWARE		GR-RR	6218
GUARDRAIL: MISCELLANEOUS HARDWARE		GR-HW	6221
CONCRETE MEDIAN BARRIER (PRECAST) (32")		CMB-3	6226
3'-6" PIER PROTECTION DETAILS (1 OF 3)		PPD-A1	6228
3'-6" PIER PROTECTION DETAILS (2 OF 3)		PPD-A2	6229
3'-6" PIER PROTECTION DETAILS (3 OF 3)		PPD-A3	6230
STANDARD DIRECTIONAL (GUIDE) SIGNS		SN-1	6301
ROUTE SHIELDS AND "EXIT ONLY" PANELS		SN-2	6302
STANDARD ROADSIDE SIGNS		SN-3	6303
STANDARD ROADSIDE SIGNS		SN-3A	6304
STANDARD ROADSIDE SIGNS		SN-3B	6305
STANDARD ROADSIDE SIGN ASSEMBLY AND INSTALLATION		SN-4	6306
STANDARD ROADSIDE SIGN ASSEMBLY AND INSTALLATION		SN-4A	6307
STANDARD ROADSIDE SIGN ASSEMBLY AND INSTALLATION		SN-4B	6308
TYPICAL INSTALLATION OF GROUND MOUNTED DIRECTIONAL SIGNS		SN-5	6309
BREAKAWAY SIGN SUPPORTS		SN-6	6310
BREAKAWAY SIGN SUPPORTS		SN-6A	6311
BREAKAWAY SIGN SUPPORTS		SN-6B	6312
SIGN FACE CONST. AND ATTACHMENT OF GROUND MOUNTED DIRECTIONAL SIGNS TO STEEL BEAMS (EXTRUDED ALUMINUM PANELS)		SN-7	6313

1/2/12/2018 11:54 AM DI_59.DGN MISSISSIPPI DEPARTMENT OF TRANSPORTATION

MISSISSIPPI DEPARTMENT OF TRANSPORTATION	
DETAILED INDEX	
PROJ. NO.: NH-0059-01(075) COUNTY: FORREST	
FILENAME: DI_59.dgn DESIGN TEAM: KIRBY CHECKED: DATE:	
WORKING NUMBER DI-3 SHEET NUMBER 4	



1st O.REV.


STATE	PROJECT NO.
MISS.	NH-0059-01(075)

DESCRIPTION OF SHEET

WKG. NO. **SH. NO.**

DESCRIPTION OF SHEET	WKG. NO.	SH. NO.
STANDARD DRAWINGS - ROADWAY SHEETS (CONTINUED)		
TYPICAL INSTALLATION AND DETAILS OF DELINEATORS AND DISTANCE REFERENCE SIGNS	SN-8	6314
TYPICAL INSTALLATION OF DELINEATORS	SN-8A	6315
TYPICAL CROSSOVER DELINEATION	SN-8B	6316
TYPICAL GUARDRAIL DELINEATION	SN-8C	6317
SIGNING DETAILS FOR BRIDGE APPROACHES	SN-9	6318
TRAFFIC CONTROL PLAN WITH FLAGGER (ONE-LANE CLOSURE OF TWO-WAY TRAFFIC)	TCP-1	6351
TRAFFIC CONTROL PLAN FOR POSTED SPEED LIMIT LESS THAN 65 MPH (4-LANE: MEDIAN LANE OR OUTSIDE LANE CLOSURE) (WORK DAY ONLY)	TCP-2	6352
TRAFFIC CONTROL PLAN FOR POSTED SPEED LIMIT LESS THAN 65 MPH (4-LANE: MEDIAN LANE OR OUTSIDE LANE CLOSURE) (EXTENDED PERIOD)	TCP-3	6353
TRAFFIC CONTROL PLAN FOR POSTED SPEED LIMIT OF 65 OR 70 MPH (INTERSTATES AND OTHER 4-LANE DIVIDED HIGHWAYS) (MEDIAN LANE OR OUTSIDE LANE CLOSURE) (EXTENDED PERIOD)	TCP-4	6354
TRAFFIC CONTROL PLAN FOR POSTED SPEED LIMIT OF 65 OR 70 MPH (INTERSTATES AND OTHER 4-LANE DIVIDED HIGHWAYS) (MEDIAN LANE OR OUTSIDE LANE CLOSURE) (WORK DAY ONLY)	TCP-5	6355
SHORT DURATION CLOSING OF DIVIDED HIGHWAYS	TCP-7	6357
HIGHWAY SIGN AND BARRICADE DETAILS FOR CONSTRUCTION PROJECTS	TCP-8	6358
DETAILS OF OUTSIDE LANE CLOSURE AT EXIT AND ENTRANCE RAMP	TCP-10	6360
TRAFFIC CONTROL PLAN : UNEVEN PAVEMENT DETAILS	TCP-12	6362
TEMPORARY STRIPING FOR TRAFFIC CONTROL 2-LANE AND 4-LANE DIVIDED HIGHWAYS	TCP-13	6363
TEMPORARY STRIPING FOR TRAFFIC CONTROL 4-LANE AND 5-LANE UNDIVIDED ROADWAYS	TCP-14	6364
LOCATION OF R16-3 SIGNS (SPEEDING FINES DOUBLED)	TCP-15	6365
TRAFFIC CONTROL DETAILS DRUM PLACEMENT AND SHOULDER CLOSURE	TCP-16	6366
RIGHT-OF-WAY MARKER	RW-1	6401
RURAL DRIVEWAYS	RD-1	6403
TYPICAL GRADING TRANSITION BETWEEN CUTS & FILLS	GT-1	6404
DRIVEWAYS, CURB & GUTTER, & SIDEWALK	SD-1	6419
DETAILS OF PAVED FLUMES	PF-1	6426
CONCRETE PIPE COLLAR	PC-1	6503
JUNCTION BOX TYPE 2 FOR TRAFFIC LOAD (MAXIMUM "W" = 9.3 FT.)	JB-2	6506
BRANCH CONNECTIONS	BC-1	6507
TYPE I MEDIAN INLET (24" PIPE AND UNDER)	MI-1	6508
DETAILS OF GRATES FOR MEDIAN INLETS	IG-1	6516
FLARED END SECTION FOR CONCRETE PIPE	FE-1	6530
FLARED END SECTION FOR CONCRETE ARCH PIPE	FE-1A	6531
STANDARD DRAWINGS - BOX CULVERT (1997 STANDARDS) SHEETS (13)		
BASIC CULVERT DRAWING - BARREL JOINT LOCATIONS - NORMAL AND SKEWED CULVERTS GROUP I DIAGRAMS	IBJL-1-97	7501
BASIC CULVERT DRAWING - BARREL JOINT LOCATIONS - NORMAL AND SKEWED CULVERTS GROUP II DIAGRAMS	IBJL-1-97	7502
BASIC CULVERT DRAWING - BARREL JOINT LOCATIONS - NORMAL AND SKEWED CULVERTS GROUP II DIAGRAMS	IBJL-1-97	7503
COLLAR DETAILS FOR BOX STRUCTURES - (SINGLE, DOUBLE, TRIPLE AND QUADRUPLE)	ICJ-1-97	7504
SKEWED COLLAR DETAILS FOR BOX STRUCTURES - (SINGLE, DOUBLE, TRIPLE AND QUADRUPLE)	ICJS-1-97	7505
CULVERT DRAWING - EXTENSIONS DETAILS FOR LENGTHENING EXISTING BOX CULVERTS	ICX-1-97	7506
BASIC CULVERT DRAWING - DOUBLE CELL - HEIGHT 6 FT., SPANS 12-32 FT.	IBD-6-2W-97	7528
BASIC CULVERT DRAWING - DOUBLE CELL - HEIGHT 6 FT., SPANS 12-32 FT.	IBD-6-2W-97	7529
WINGS WITH 3:1 SLOPE FOR BASIC CULVERT DRAWING - DOUBLE CELL - HEIGHT 6-12 FT, SPANS 12-40 FT	IWD-3-97	7536
WINGS WITH 3:1 SLOPE FOR BASIC CULVERT DRAWING - DOUBLE CELL - HEIGHT 6-12 FT, SPANS 12-40 FT	IWD-3-97	7537
WINGS WITH 3:1 SLOPE FOR BASIC CULVERT DRAWING - DOUBLE CELL - HEIGHT 6-12 FT, SPANS 12-40 FT	IWD-3-97	7538
BOX CULVERT DRAWINGS - IBD CULVERTS MODIFIED FOR HIGH COVER - WINGS WITH 3:1 SLOPE	IBDM-3W-97	7544
BOX CULVERT DRAWINGS - IBD CULVERTS MODIFIED FOR HIGH COVER - WINGS WITH 3:1 SLOPE	IBDM-3W-97	7545
SPECIAL DESIGN BRIDGE SHEETS (21)		
(SEE BRIDGE SHEETS BEGINNING ON 8001)		8001-8021
CROSS SECTION SHEETS (160)		
		9001-9160
TOTAL SHEETS (NOT INCLUDING BRIDGE SHEETS) (547) ↑		

12/12/2018 11:54 AM DI_59.DGN

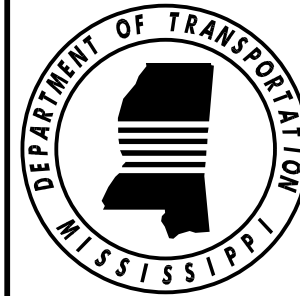
<table border="1"> <tr> <td>12/12/18</td> <td>REVISION</td> <td>DATE</td> <td>BY</td> </tr> <tr> <td> </td> <td> </td> <td> </td> <td> </td> </tr> </table>	12/12/18	REVISION	DATE	BY					MISSISSIPPI DEPARTMENT OF TRANSPORTATION DETAILED INDEX	
	12/12/18	REVISION	DATE	BY						
PROJ. NO.: NH-0059-01(075) COUNTY: FORREST		 WORKING NUMBER DI-4								
FILENAME: DI_59.dgn DESIGN TEAM: KIRBY CHECKED: DATE:		SHEET NUMBER 5								

STATE	PROJECT NO.
MISS.	NH-0059-01(075)

GENERAL NOTES

- 1 THE LOCATION AND SPACING OF SIGNS, SHOWN ON THE TRAFFIC CONTROL PLANS, ARE APPROXIMATE AND MAY BE ADJUSTED AS NECESSARY TO FIT FIELD CONDITIONS.
- 2 ALL TRAFFIC CONTROL DEVICES ON THIS PROJECT SHALL COMPLY WITH PART VI OF THE MUTCD (LATEST EDITION).
- 3 ALL PLASTIC DRUMS SHALL HAVE A BALLASTING COLLAR MADE FROM RECYCLED TRUCK TIRES OR OTHER SUITABLE MATERIAL.
- 4 A SOIL PROFILE HAS BEEN PREPARED FOR THIS PROJECT USING SAMPLES TAKEN FROM HOLES AT THE LOCATIONS INDICATED IN THE TEST REPORTS. THIS SOIL PROFILE IS ON FILE IN THE DISTRICT AND CENTRAL CONSTRUCTION OFFICES AND IS AVAIL-ABLE FOR EXAMINATION. THE DEPARTMENT DOES NOT GUARANTEE THAT THE MATERIALS AS SHOWN IN THE REPORTS ARE NECESSARILY TO BE FOUND OUTSIDE THE TEST HOLES.
- 5 25% SHRINKAGE FACTOR USED IN THE EARTHWORK CALCULATIONS IS FOR DESIGN ESTIMATING PURPOSES ONLY.
- 6 THE CONTRACTOR SHALL BE RESPONSIBLE FOR PROTECTING EXISTING STRUCTURES SUCH AS, BUT NOT LIMITED TO, PIPES, INLETS, APRONS, AND BRIDGES FROM DAMAGE WHICH MIGHT OCCUR DURING CONSTRUCTION. THE CONTRACTOR SHALL REPLACE OR REPAIR, AS DIRECTED BY THE ENGINEER, ANY STRUCTURES DAMAGED DURING THE LIFE OF THE CONTRACT. NO PAYMENT WILL BE MADE FOR REPLACEMENT OR REPAIR OF DAMAGED ITEMS.
- 7 VOIDS CREATED BY THE REMOVAL OF, BUT NOT LIMITED TO, POSTS, CONCRETE ANCHORS, AND FOOTINGS SHALL BE BACKFILLED AND TAMPED IN ACCORDANCE WITH SECTION 203 OF THE MISSISSIPPI STANDARD SPECIFICATIONS FOR ROAD AND BRIDGE CONSTRUCTION, THE COST OF WHICH WILL BE ABSORBED IN OTHER ITEMS BID.
- 8 UTILITIES ON THE DRAWINGS ARE SHOWN IN THEIR ORIGINAL LOCATION BASED UPON THE BEST INFORMATION AVAILABLE TO THE ENGINEER. UTILITIES THAT WERE FOUND TO BE IN CONFLICT WITH CONSTRUCTION HAVE BEEN RELOCATED. PERMITS ARE ON FILE WITH THE DEPARTMENT SHOWING THE APPROXIMATE LOCATION OF UTILITIES RELOCATED WITHIN THE RIGHT-OF-WAY. THE ENGINEER CAN NOT AND DOES NOT WARRANT THAT THIS INFORMATION IS COMPLETE OR ACCURATE. THE CONTRACTOR MUST COORDINATE DIRECTLY WITH THE INVOLVED UTILITY OWNERS TO HAVE UNDERGROUND UTILITY LINES FIELD LOCATED IN ADVANCE OF CONSTRUCTION.
- 9 WORK ON STRUCTURES FOR THIS PROJECT REQUIRES EXCAVATION IN THE IMMEDIATE VICINITY OF TRAFFIC AND ADJACENT PROPERTIES. THEREFORE, THE RISK OF A FAILURE OCCURRING DURING EXCAVATION REQUIRES THAT EXTREME CAUTION BE EXERCISED. THE CONTRACTOR SHALL BE RESPONSIBLE FOR PLACING WHAT BRACING, SHORING, OR GROUND SUPPORT SYSTEM THAT IS DEEMED NECESSARY TO PREVENT A FAILURE AND PROTECT THE PERSONS WORKING NEAR THE EXCAVATION, THE PUBLIC THAT MAY BE ABOVE THE EXCAVATION OR ANY STRUCTURES ADJACENT TO THE EXCAVATION. ALL COSTS FOR DESIGNING, DRAWING, AND CONSTRUCTING THE FACILITY SHALL BE INCLUDED IN THE PRICE BID FOR CONTRACT ITEMS.
- 10 FULL COLLARS ARE TO BE USED AT ALL BOX CULVERT EXTENSIONS AND AT ALL BOX CULVERT CONSTRUCTION JOINTS. (SEE WK. NO. ICJ-1-97 FOR DETAILS.)
- 11 FOR LIST OF PUBLIC UTILITIES, SEE WORKING NO. 4.
- 12 ALL POST, PIPE, AND I-BEAM LENGTHS IN THESE PLANS ARE ESTIMATES. POST LENGTHS FOR ALL SIGNS SHALL BE VERIFIED IN THE FIELD BY THE CONTRACTOR PRIOR TO FABRICATION.
- 13 FLUORESCENT ORANGE SHEETING SHALL BE USED ON ALL CONSTRUCTION AND TRAFFIC CONTROL SIGNS EXCEPT FOR THOSE DESIGNATED ON THE PLANS TO BE BLACK LEGEND AND BORDER ON WHITE BACKGROUND.
- 14 WHERE MILLING IS REQUIRED, THE CONTRACTOR SHALL PROVIDE OUTLETS IN THE EXISTING SHOULDERS AT SUFFICIENT INTERVALS TO PREVENT POOLING OR STANDING WATER ON THE MILLED SURFACE, THE COST OF WHICH SHALL BE ABSORBED IN OTHER ITEMS BID.
- 15 THE EROSION CONTROL DEVICES REFERENCED IN THESE PLANS ARE A MINIMUM REQUIREMENT. IT IS THE RESPONSIBILITY OF THE CONTRACTOR TO ENSURE THAT SILT DOES NOT LEAVE THE RIGHT OF WAY OR CONTAMINATE WATERS OF THE U. S. DURING CONSTRUCTION. THE CONTRACTOR SHALL SUBMIT AN EROSION CONTROL PLAN AT THE PRECONSTRUCTION CONFERENCE OR PRIOR TO COMMENCEMENT OF WORK AND MAINTAIN THE PLAN DURING CONSTRUCTION. ANY ADDITIONAL SILT BASINS NOT SHOWN IN THE PLANS SHALL BE INCLUDED IN THE CONTRACTOR'S EROSION CONTROL PLAN PRIOR TO SUBMITTING FOR APPROVAL.
- 16 PRIOR TO EARTHWORK OPERATIONS, THE EXISTING TOP 4" TOPSOIL IS TO BE STRIPPED AND STOCKPILED. AFTER THE GRADING OPERATIONS ARE COMPLETED, SAID TOPSOIL SHALL BE PLACED ON ALL AREAS THAT ARE NOT TO BE PAVED OR OTHERWISE PROTECTED, IN ACCORDANCE WITH SECTION 211 OF THE SPECIFICATIONS, OR THE VEGETATION SCHEDULE (SEE WK. SH. VS-1). EXISTING TOPSOIL AND ALL COSTS ASSOCIATED WITH STRIPPING, HAULING, STOCKPILING, AND PLACEMENT OF THE EXISTING TOPSOIL ARE TO BE PAID FOR AS UNCLASSIFIED EXCAVATION. ANY ADDITIONAL TOP SOIL TO BE PAID FOR UNDER PAY ITEM 211-B001 - TOP SOIL TREATMENT, CONTRACTOR FURNISHED.
- 17 TEMPORARY STRIPING SHALL CONFORM TO FINISHED STRIPE SPECIFICATIONS FOR ALIGNMENT, NEATNESS, AND STRAIGHTNESS.
- 18 ERECTION DATES ARE TO BE LEGIBLY WRITTEN IN BOLD, BLACK MARKINGS ON THE BACK OF ALL PERMANENT SIGNS WITH A PERMANENT MARKING STICK THAT IS WATERPROOF, FADE RESISTANT, AND MARKS ON WET OR DRY SURFACES.
- 19 IF COLORS ARE USED ON PLAN/PROFILE SHEETS, THEY ARE INTENDED TO VISUALLY EASE THE LOCATION OF ELEMENTS FOR USERS OF THESE DRAWINGS. ALTHOUGH THE INTENT IS TO CATEGORIZE EVERYTHING AS EITHER EXISTING OR PROPOSED, IT IS THE END USER'S RESPONSIBILITY TO ENSURE ALL ELEMENTS ARE INTERPRETED CORRECTLY REGARDLESS OF COLOR.
- 20 SEE BRIDGE PLANS FOR DETAILED INDEX SHEET(S), ESTIMATED AND SUMMARY OF QUANTITY SHEETS, AND EROSION CONTROL SHEETS.
- 21 ALL ADDENDA TO THESE PLANS WILL BE POSTED TO WWW.MDOT.MS.GOV UNDER THE PROPOSAL ADDENDA COLUMN. BIDDERS ARE ADVISED THAT HARD COPIES OF ANY ADDENDA FOR THIS PROJECT WILL NOT BE MAILED. IT IS THE BIDDER'S RESPONSIBILITY TO CHECK AND SEE IF ANY ADDENDA HAVE BEEN POSTED FOR THIS PROJECT.
- 22 THE BRIDGE DECKS SHALL BE GROOVED, AND ALL BRIDGE JOINTS SHALL BE SEALED PRIOR TO OPENING THE BRIDGES TO TRAFFIC.
- 23 STORAGE OF FLAMMABLE MATERIALS WILL NOT BE ALLOWED UNDER ANY BRIDGE STRUCTURES.
- 24 ALL OBSTRUCTIONS THAT CONFLICT WITH REQUIRED CONSTRUCTION SHALL BE REMOVED AT THE CONTRACTOR'S EXPENSE UNDER CLEARING AND GRUBBING (201-A001). EXISTING PIPES THAT ARE TO BE ABANDONED IN PLACE SHALL BE PLUGGED ON EACH END WITH CONCRETE.
- 25 THE COST FOR REMOVAL OF ALL HEADWALLS, WINGWALLS AND FLARED END SECTIONS (PIPES, BOX CULVERTS, BOX BRIDGES) SHALL BE ABSORBED IN OTHER ITEMS BID.
- 26 ALL EXISTING SIGNS WHICH ARE TO BE REMOVED AS A PART OF THIS PROJECT THAT ARE NOT IN CONFLICT WITH CONSTRUCTION SHALL REMAIN IN PLACE UNTIL NEW SIGNS ARE INSTALLED UNLESS NOTED OR DIRECTED OTHERWISE BY THE PROJECT ENGINEER. ROADWAY SIGNS THAT ARE IN CONFLICT WITH CONSTRUCTION SHALL BE REMOVED AND RELOCATED BY THE CONTRACTOR AS DIRECTED BY THE ENGINEER, THE COST OF WHICH SHALL BE ABSORBED IN OTHER ITEMS BID.

12/12/2018 11:54 AM GN.DGN

		MISSISSIPPI DEPARTMENT OF TRANSPORTATION	
		GENERAL NOTES	
		PROJ. NO.: NH-0059-01(075) COUNTY: FORREST	
		FILENAME: GN.dgn DESIGN TEAM: KIRBY CHECKED: _____ DATE: _____	
REVISION	DATE	 WORKING NUMBER GN-1 SHEET NUMBER 6	


STATE	PROJECT NO.
MISS.	NH-0059-01(075)

GENERAL NOTES

- ②7 ALL EXISTING SIGNS AND SUPPORTS REMOVED UNDER THIS PROJECT SHALL BECOME THE PROPERTY OF THE CONTRACTOR AND ARE NOT A SEPARATE PAY ITEM.
- ②8 DIRECT-APPLIED LEGEND, BORDER, AND/OR SHIELDS ARE TO BE USED ON ALL GUIDE SIGNS. DIGITALLY PRODUCED SIGN COPY, SHIELDS, LEGEND, SYMBOLS, OR IMAGES WILL NOT BE ALLOWED WITHOUT WRITTEN APPROVAL FROM MDOT'S PROJECT ENGINEER.
- ②9 AFTER THE PERMANENT SIGNS HAVE BEEN INSTALLED, THE CONTRACTOR SHALL SUBMIT TO THE PROJECT ENGINEER A DIGITAL COPY OF A MICROSOFT EXCEL SPREADSHEET WITH THE FOLLOWING INVENTORY DATA CAPTURED FOR EACH SIGN: LOCATION OF SIGN (LATITUDE-LONGITUDE GPS COORDINATES), **MUTCD** SIGN CODE, SIZE, BACKGROUND AND LEGEND COLORS, SUPPORT TYPE (POST, PIPE, SQUARE POST, OR I-BEAM), NUMBER OF SUPPORTS, DATE OF INSTALLATION, SIGN FACE DIRECTION, ROUTE NAME OR NUMBER, DIRECTION OF VEHICLE TRAVEL, AND LEGEND ON SIGN IF APPLICABLE. EACH SIGN SHALL BE ASSIGNED A UNIQUE ID NUMBER, AND A DIGITAL PHOTO OF EACH SIGN SHALL BE SUBMITTED IN BITMAP FORMAT. THE PHOTO FILENAME SHALL CORRESPOND WITH THE UNIQUE ID NUMBER.
- ③0 THE CONTRACTOR MAY CLOSE I-59 BY DIVERTING TRAFFIC ALONG THE INTERCHANGE RAMPS FOR DEMOLITION OF THE EXISTING SR 42 BRIDGE. CLOSURE OF I-59 WILL ONLY BE PERMITTED BETWEEN THE HOURS OF 7:00 PM AND 9:00 AM SATURDAY THROUGH SUNDAY. ONLY ONE OCCURRENCE WILL BE ALLOWED IN EACH DIRECTION OF I-59 ON THIS PROJECT. A LANE RENTAL FEE OF \$10,000 PER FULL OR PARTIAL HOUR SHALL BE ASSESSED FOR CLOSURES OR OBSTRUCTIONS THAT EXTEND BEYOND THE TIMES MENTIONED ABOVE. THE CONTRACTOR SHALL PROVIDE APPROPRIATE TRAFFIC CONTROL DEVICES TO DIVERT INTERSTATE TRAFFIC ALONG THE RAMPS AND PROVIDE CHANGEABLE MESSAGE SIGNS TO ALERT ONCOMING INTERSTATE MOTORISTS OF QUEUEING RESULTING FROM INTERSTATE DETOURS (COST ABSORBED).

PLAN DIVISION
MISSISSIPPI DEPARTMENT OF TRANSPORTATION

12/12/2018 11:54 AM GN.DGN

REVISION		BY		MISSISSIPPI DEPARTMENT OF TRANSPORTATION	
DATE		FILENAME: GN.dgn		 GENERAL NOTES PROJ. NO.: NH-0059-01(075) COUNTY: FORREST	
DESIGN TEAM		KIRBY			
CHECKED		DATE		SHEET NUMBER	7