

**SECTION 905 -- PROPOSAL (CONTINUED)**

I (We) hereby certify by digital signature and electronic submission via Bid Express of the Section 905 proposal below, that all certifications, disclosures and affidavits incorporated herein are deemed to be duly executed in the aggregate, fully enforceable and binding upon delivery of the bid proposal. I (We) further acknowledge that this certification shall not extend to the bid bond or alternate security which must be separately executed for the benefit of the Commission. This signature does not cure deficiencies in any required certifications, disclosures and/or affidavits. I (We) also acknowledge the right of the Commission to require full and final execution on any certification, disclosure or affidavit contained in the proposal at the Commission's election upon award. Failure to so execute at the Commission's request within the time allowed in the Standard Specifications for execution of all contract documents will result in forfeiture of the bid bond or alternate security.

Bidder acknowledges receipt of and has added to and made a part of the proposal and contract documents the following addendum (addenda):

ADDENDUM NO. <u>  1  </u>	DATED <u>  1/11/2021  </u>	ADDENDUM NO. _____	DATED _____
ADDENDUM NO. _____	DATED _____	ADDENDUM NO. _____	DATED _____
ADDENDUM NO. _____	DATED _____	ADDENDUM NO. _____	DATED _____

Number	Description
1	Revised Bid Items; Added or Revised Plan Sheet Nos. 2, 7, 9-10, 14, 16-22, 28 & 30-33; Amendment EBSx Download Required.

TOTAL ADDENDA:   1    
(Must agree with total addenda issued prior to opening of bids)

Respectfully Submitted,

DATE \_\_\_\_\_

\_\_\_\_\_  
Contractor

BY \_\_\_\_\_  
Signature

TITLE \_\_\_\_\_

ADDRESS \_\_\_\_\_

CITY, STATE, ZIP \_\_\_\_\_

PHONE \_\_\_\_\_

FAX \_\_\_\_\_

E-MAIL \_\_\_\_\_

(To be filled in if a corporation)

Our corporation is chartered under the Laws of the State of \_\_\_\_\_ and the names, titles and business addresses of the executives are as follows:

\_\_\_\_\_  
President Address

\_\_\_\_\_  
Secretary Address

\_\_\_\_\_  
Treasurer Address

The following is my (our) itemized proposal.

IM-0055-03(094)/ 107824301000

Montgomery County(ies)

Revised 01/26/2016

Mill & Overlay approximately 12 miles of I-55 from the Carroll County Line to 2.5 miles South of Carroll County, known as Federal Aid Project No. IM-0055-03(094) / 107824301 in Montgomery County.

Line No.	Item Code	Adj Code	Quantity	Units	Description [Fixed Unit Price]
<b>Roadway Items</b>					
0010	201-A001		1	Lump Sum	Clearing and Grubbing
0020	201-D002		4	Acre	Random Clearing
0030	202-B007		600	Square Yard	Removal of Asphalt Pavement, All Depths
0040	202-B045		600	Square Yard	Removal of Cement Treated Base, All Depths
0050	202-B051		990	Linear Feet	Removal of Concrete Curb
0060	202-B060		450	Linear Feet	Removal of Concrete Median Barrier
0070	202-B067		122	Square Yard	Removal of Concrete Pavement Punchouts, 8" Depth
0080	202-B150		32,540	Linear Feet	Removal of Guard Rail Including Post, Blockouts & Hardware
0090	202-B152		69	Each	Removal of Guard Rail Terminal End Section
0100	202-B177		4	Each	Removal of Low Mast Lighting Assembly
0110	202-B240		3,500	Linear Feet	Removal of Traffic Stripe
0120	202-B251		970	Linear Feet	Removal of Underground Electric Wire
0130	203-A001	(E)	4,063	Cubic Yard	Unclassified Excavation, FM, AH
0140	203-EX020	(E)	3,000	Cubic Yard	Borrow Excavation, AH, FME, Class B9
0150	203-G001	(E)	1,905	Cubic Yard	Excess Excavation, FM, AH
0160	209-A005		4,277	Square Yard	Geotextile Stabilization, Type V, Non-Woven
0170	213-C001		2	Ton	Superphosphate
0180	217-A001		1,000	Square Yard	Ditch Liner
0190	220-A001		2	Acre	Insect Pest Control [\$30.00]
0200	223-A001		8	Acre	Mowing [\$50.00]
0210	225-A001		4	Acre	Grassing
0220	225-B001		8	Ton	Agricultural Limestone
0230	225-C001		8	Ton	Mulch, Vegetative Mulch
0240	226-A001		4	Acre	Temporary Grassing
0250	234-A001		3,500	Linear Feet	Temporary Silt Fence
0260	237-A002		1,000	Linear Feet	Wattles, 20"
0270	304-B002	(GT)	14,450	Ton	Granular Material, Class 3, Group D
0280	403-A001	(BA1)	403	Ton	12.5-mm, HT, Asphalt Pavement
0290	403-A003	(BA1)	806	Ton	12.5-mm, ST, Asphalt Pavement
0300	403-A006	(BA1)	932	Ton	19-mm, ST, Asphalt Pavement
0310	403-A013	(BA1)	878	Ton	9.5-mm, HT, Asphalt Pavement
0320	403-A015	(BA1)	11,842	Ton	9.5-mm, ST, Asphalt Pavement

Line No.	Item Code	Adj Code	Quantity	Units	Description [Fixed Unit Price]
0330	403-S001		47	Mile	Joint Sealant
0340	405-A001	(BA1)	45,350	Ton	Stone Matrix Asphalt, 12.5 mm Mixture
0350	405-A002	(BA1)	34,010	Ton	Stone Matrix Asphalt, 9.5 mm Mixture
0360	406-D001		528,900	Square Yard	Fine Milling of Bituminous Pavement, All Depths
0370	407-A001	(A2)	118,700	Gallon	Asphalt for Tack Coat
0380	413-E001		450	Linear Feet	Sawing and Sealing Transverse Joints in Asphalt Pavement
0390	423-A001		47	Mile	Rumble Strips, Ground In
0400	501-A002	(C)	702	Square Yard	8" Reinforced Cement Concrete Pavement, Broom Finish
0410	501-B001	(C)	125	Square Yard	10" Plain Cement Concrete Pavement, Broom Finish
0420	501-D001		50	Linear Feet	Expansion Joints, With Dowels
0430	501-G001		265	Each	Dowels, Drilled and Installed
0440	503-C010		3,000	Linear Feet	Saw Cut, Full Depth
0450	503-E002		375	Each	Tie Bars, No. 5 Deformed Drilled and Epoxied or Grouted
0460	601-B001	(S)	5	Cubic Yard	Class "B" Structural Concrete, Minor Structures
0470	602-A001	(S)	1,500	Pounds	Reinforcing Steel
0480	603-CA011	(S)	32	Linear Feet	18" Reinforced Concrete Pipe, Class III
0490	603-CB003	(S)	1	Each	18" Reinforced Concrete End Section
0500	605-AA002	(S)	15	Square Yard	Geotextile for Subsurface Drainage, Type V
0510	605-O002	(S)	27	Linear Feet	4" Perforated Sewer Pipe for Underdrains, SDR 23.5
0520	605-P002	(S)	14	Linear Feet	4" Non-perforated Sewer Pipe for Underdrains, SDR 23.5
0530	605-W001	(GY)	1	Cubic Yard	Filter Material for Combination Storm Drain and/or Underdrains, Type A, FM
0540	606-A003		40	Each	Guard Posts
0550	606-B001		32,540	Linear Feet	Guard Rail, Class A, Type 1
0560	606-C003		63	Each	Guard Rail, Cable Anchor, Type 1
0570	606-D005		12	Each	Guard Rail, Bridge End Section, Type A
0580	606-D022		4	Each	Guard Rail, Bridge End Section, Type I
0590	606-E005		69	Each	Guard Rail, Terminal End Section, Flared
0600	609-D004	(S)	520	Linear Feet	Combination Concrete Curb and Gutter Type 2 Modified
0610	609-D007	(S)	150	Linear Feet	Combination Concrete Curb and Gutter Type 3 Modified
0620	615-A003	(S)	408	Linear Feet	Concrete Bridge End Barrier, 42"
0630	616-A001	(S)	1,155	Square Yard	Concrete Median and/or Island Pavement, 10-inch
0640	618-A001		1	Lump Sum	Maintenance of Traffic
0650	619-A1001		96	Mile	Temporary Traffic Stripe, Continuous White

Line No.	Item Code	Adj Code	Quantity	Units	Description [Fixed Unit Price]
0660	619-A2001		96	Mile	Temporary Traffic Stripe, Continuous Yellow
0670	619-A3001		96	Mile	Temporary Traffic Stripe, Skip White
0680	619-A5001		22,400	Linear Feet	Temporary Traffic Stripe, Detail
0690	619-D1001		88	Square Feet	Standard Roadside Construction Signs, Less than 10 Square Feet
0700	619-D2001		664	Square Feet	Standard Roadside Construction Signs, 10 Square Feet or More
0710	619-F1001		2,000	Linear Feet	Concrete Median Barrier, Precast
0720	619-F2001		2,000	Linear Feet	Remove and Reset Concrete Median Barrier, Precast
0730	619-G4001		36	Linear Feet	Barricades, Type III, Double Faced
0740	619-G4005		192	Linear Feet	Barricades, Type III, Single Faced
0750	619-G5001		50	Each	Free Standing Plastic Drums
0760	619-G7001		50	Each	Warning Lights, Type "B"
0770	620-A001		1	Lump Sum	Mobilization
0780	626-A001		24	Mile	6" Thermoplastic Double Drop Traffic Stripe, Skip White
0790	626-C002		24	Mile	6" Thermoplastic Double Drop Edge Stripe, Continuous White
0800	626-F001		24	Mile	6" Thermoplastic Double Drop Edge Stripe, Continuous Yellow
0810	626-G004		5,900	Linear Feet	Thermoplastic Double Drop Detail Stripe, White
0820	627-K001		2,210	Each	Red-Clear Reflective High Performance Raised Markers
0830	630-D005		45	Linear Feet	Structural Steel Beams, W12 x 26
0840	630-D009		48	Linear Feet	Structural Steel Beams, W8 x 18
0850	630-E001		140	Pounds	Structural Steel Angles & Bars, 3 1/2" x 3 1/2" x 1/4" Angles
0860	630-F006		494	Each	Delineators, Guard Rail, White
0870	630-F007		379	Each	Delineators, Guard Rail, Yellow
0880	630-F010		110	Each	Delineators, Post Mounted, Double White
0890	630-F011		52	Each	Delineators, Post Mounted, Double Yellow
0900	630-F012		30	Each	Delineators, Post Mounted, Single White
0910	630-F013		14	Each	Delineators, Post Mounted, Single Yellow
0920	682-A034		934	Linear Feet	Underground Branch Circuit, AWG 6, 3 Conductor
0930	682-B032		35	Linear Feet	Underground Branch Circuit, Jacked or Bored, AWG 6, 3 Conductor
0940	684-A003		5	Cubic Yard	Pole Foundation, 24" Diameter
0950	686-A001		4	Each	Relocation of Existing Lighting Assemblies
0960	699-A001		1	Lump Sum	Roadway Construction Stakes
0970	815-F002	(S)	25	Ton	Sediment Control Stone
0980	907-402-A002	(BA1)	18,071	Ton	Open Graded Friction Course, 9.5-mm Mixture
0990	907-402-B001	(A3)	29,089	Gallon	Bituminous Tack Coat

Line No.	Item Code	Adj Code	Quantity	Units	Description [Fixed Unit Price]
1000	907-619-E3001		6	Each	Changeable Message Sign
1010	907-630-O004		2	Each	Remove and Reset Sign, All Sizes
1020	907-683-G1002		3	Each	Renovation of High Mast Lighting Assembly, Type 130-8-S
1030	907-683-G1003		1	Each	Renovation of High Mast Lighting Assembly, Type 100-6-S
1040	907-683-G1004		1	Each	Renovation of High Mast Lighting Assembly, Type 100-4-S
1050	907-683-G1005		1	Each	Renovation of High Mast Lighting Assembly, Type 130-6-S
1060	907-683-G1006		3	Each	Renovation of High Mast Lighting Assembly, Type 130-4-S
1070	907-683-H1002		2	Each	Renovation of Low Mast Lighting Assembly, Type 40-1-10-255
1080	907-683-H1003		4	Each	Renovation of Low Mast Lighting Assembly, Type 40-1-20-255
1090	907-683-H1006		9	Each	Renovation of Low Mast Lighting Assembly, Type 40-2-10-255
1100	907-906001		720	Hours	Trainees [\$5.00]
<b>ALTERNATE GROUP AA NUMBER 1</b>					
1110	304-F001	(GT)	2,600	Ton	3/4" and Down Crushed Stone Base
<b>ALTERNATE GROUP AA NUMBER 2</b>					
1120	304-F002	(GT)	2,600	Ton	Size 610 Crushed Stone Base
<b>ALTERNATE GROUP AA NUMBER 3</b>					
1130	304-F003	(GT)	2,600	Ton	Size 825B Crushed Stone Base

STATE PROJECT NO.  
MISS. IM-0055-03(094)

WKG. NO. SH. NO.

DESCRIPTION OF SHEET

WKG. NO. SH. NO.

TITLE SHEET	1	SPECIAL DESIGN SHEETS ( CONTINUED )	
DETAILED INDEX & GENERAL NOTES ( 3 )		DETAIL OF GUARD POSTS	DDT-1 35
DETAILED INDEX	DI-1	TYPICAL CRC PAVEMENT REPAIR	PR-1A 36
DETAILED INDEX	DI-2	TYPICAL CRC PAVEMENT REPAIR (OPTIONAL WELDING METHOD)	PR-1B 37
GENERAL NOTES	GN-1	FAILURE REPAIR DETAILS JOINTED REINFORCED CONCRETE PAVEMENT	PR-1C 38
		LANE CLOSURE DETAILS FOR FULL DEPTH CONCRETE PAVEMENT REPAIR	LCD-1 39
		BARRIER DETAIL - BRIDGE 88.1 A&B @ I-55 & U.S. 82	BD-1 40
		BARRIER DETAIL - BRIDGE 188.7 A&B @ I-55 & N.MISSISSON RD.	BD-2 41
TYPICAL SECTION SHEETS ( 5 )			
EXISTING AND PROPOSED CONSTRUCTION OF MAINLINE ( B.O.P. TO E.O.P. )	TS-1		
TYPICAL SECTION OF RAMPS (MILL & OVERLAY) HWY.82 & I-55 INTERCHANGE	TS-2		
INTERCHANGE RAMP EXTENSIONS AT HWY. 82 & I-55	TS-3		
U.S. HWY. 82 & RAMP SHOULDERS	TS-4		
TYPICAL SECTION AT ROADSIDE HAZARDS	TS-4R-1		
QUANTITY SHEETS ( 7 )			
SUMMARY OF QUANTITIES (ROADWAY )	SQ-1		
SUMMARY OF QUANTITIES (ROADWAY )	SQ-2		
SUMMARY OF QUANTITIES (ROADWAY )	SQ-3		
ESTIMATED QUANTITIES FOR TRAFFIC CONTROL SIGNS	EQ-1		
ESTIMATED QUANTITIES (FOR CLEARING LIMITS AND CONCRETE PUNCHOUTS )	EQ-2		
ESTIMATED QUANTITIES (DIRECTIONAL SIGNS & EARTHWORK )	EQ-3		
ESTIMATED QUANTITIES (FOR GUARDRAIL )	EQ-4		
PLAN PROFILE SHEETS ( 6 )			
SOUTHEAST RAMP EXTENSION @ HWY. 82 INTERCHANGE ( STA. 333+26 - STA. 339+66 )	WK-3		
NORTHEAST RAMP EXTENSION @ HWY. 82 INTERCHANGE ( STA. 370+69 - STA. 379+49 )	WK-4		
SOUTHWEST RAMP EXTENSION @ HWY. 82 INTERCHANGE ( STA. 327+66 - STA. 336+46 )	WK-5		
NORTHWEST RAMP EXTENSION @ HWY. 82 INTERCHANGE ( STA. 367+90 - STA. 374+30 )	WK-6		
U.S. HWY. 82 INTERCHANGE (EAST)	WK-7		
U.S. HWY. 82 INTERCHANGE (WEST)	WK-8		
SPECIAL DESIGN SHEETS - ROADWAY ITEMS - ( 19 )			
UNDERDRAIN DETAILS FOR STA. 56+20 NW RAMP US 82 & I-55	RUD-1		
PAVING DETAILS AT RAMPS	PD-1		
DETAIL OF CONSTRUCTION SIGNING	DCS-1		
BRIDGE APPROACH MILLING DETAIL	BAD-2		
GUARDRAIL: SHOULDER & SLOPE DETAILS	SD-4R-1		
VEGETATION SCHEDULE	VS-1		
EROSION CONTROL	EC-1		
PRELIMINARY EROSION CONTROL PLAN - SE RAMP EXT. @ HWY 82	ECP-1		
PRELIMINARY EROSION CONTROL PLAN - NE RAMP EXT. @ HWY 82	ECP-2		
PRELIMINARY EROSION CONTROL PLAN - SW RAMP EXT. @ HWY 82	ECP-3		
PRELIMINARY EROSION CONTROL PLAN - NW RAMP EXT. @ HWY. 82	ECP-4		
DETAIL OF BRIDGE CONNECTOR	BGRC-1		
		STANDARD DRAWINGS - LIGHTING ( 9 )	
		LIGHTING NOTES, LEGEND AND ABBREVIATIONS	LN-1 4001
		ESTIMATED QUANTITIES - LIGHTING	LQ-1 4002
		LIGHTING LAYOUT	L-1 4003
		LIGHTING LAYOUT	L-2 4004
		LIGHTING LAYOUT	L-3 4005
		LIGHTING LAYOUT	L-4 4006
		LIGHTING DETAIL	LD-1 4007
		LIGHTING DETAIL	LD-2 4008
		LIGHTING DETAIL	LD-3 4009

PS & E PLANS-DATE: 9/21/20	
FMS CON. # 107824/301000	
REVISIONS	
DATE	SHEET NO.
12/7/20	7,9,10,14,16,17,18,19,
	20,21,22,28,30,31,32,33
	ML

M. Lambert

MISSISSIPPI DEPARTMENT OF TRANSPORTATION

**DETAILED INDEX**


PROJ. NO.: IM-0055-03(094)  
COUNTY: Montgomery

WORKING NUMBER: DI-1  
SHEET NUMBER: 2

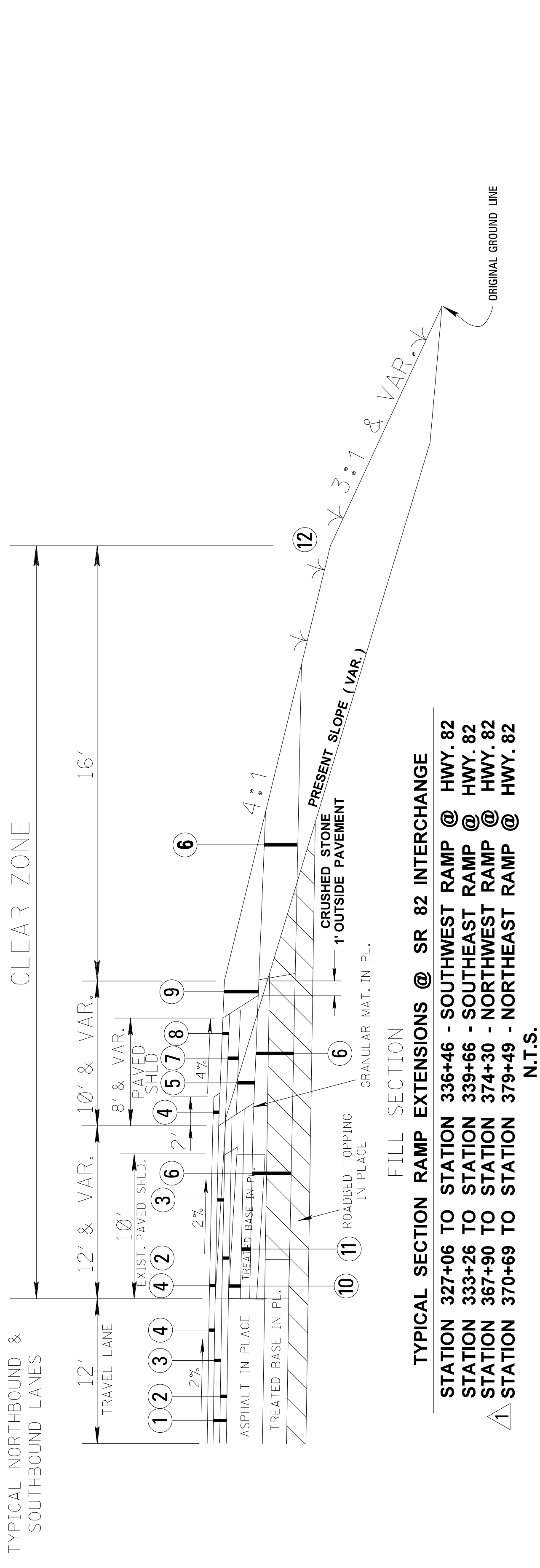
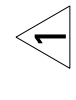
DATE: 2016-11-10  
DESIGN TEAM: RWD-DI-001  
CHECKED:

STATE	PROJECT NO.
MISS.	IM-0055-03(094)

**LEGEND**

- ① 3.50" & VARIABLE DEPTH MILLING REQUIRED
- ② 2.00" DEPTH SMA ( 12.5 mm MIXTURE )( 1 @ 2.00" ) REQUIRED
- ③ 1.50" DEPTH SMA ( 9.5 mm MIXTURE )( 1 @ 1.50" ) REQUIRED
- ④ 1.00" DEPTH OGFC, ( 9.5 mm MIXTURE ) ( 1 @ 1.00" ) REQUIRED
- ⑤ 5.00" ASPHALT PAVEMENT, ST ( 19 mm MIXTURE ) ( 2 @ 2.50" ) REQUIRED
- ⑥ 8" CRUSHED STONE W/GEOTEXTILE FABRIC TYPE V ( NON-WOVEN ) REQUIRED
- ⑦ 2.00" ASPHALT PAVEMENT, ST ( 12.5 mm MIXTURE )( 1 @ 2.00" ) REQUIRED
- ⑧ 1.50" ASPHALT PAVEMENT, ST ( 9.5 mm MIXTURE )( 1 @ 1.50" )( WITH GROUND-IN RUMBLE STRIPS ON PAVED SHOULDER PLACED BEFORE OGFC ) REQUIRED
- ⑨ 8.25" & VARIABLE GRANULAR MATERIAL, CLASS 3, GROUP D REQUIRED
- ⑩ 2.50" ASPHALT PAVEMENT, HT ( 19 mm MIXTURE )( 1 @ 2.50" ) REQUIRED
- ⑪ 2.50" ASPHALT PAVEMENT, ST ( 19 mm MIXTURE )( 1 @ 2.50" ) REQUIRED
- ⑫  INDICATES AREA TO BE TREATED IN ACCORDANCE WITH THE VEGETATION SCHEDULE. SEE WK. SH. NO. VS-1

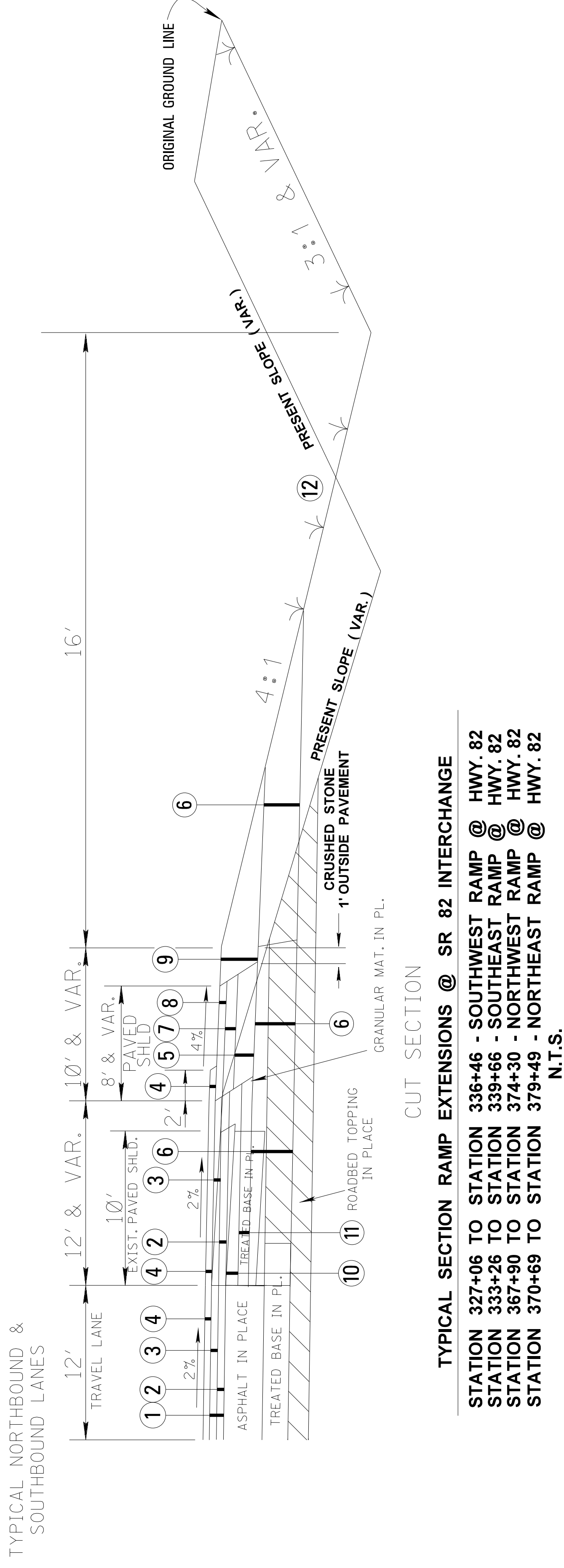
NOTE: NO JOINT PERMITTED IN TRAVEL LANE.



**FILL SECTION**

**TYPICAL SECTION RAMP EXTENSIONS @ SR 82 INTERCHANGE**

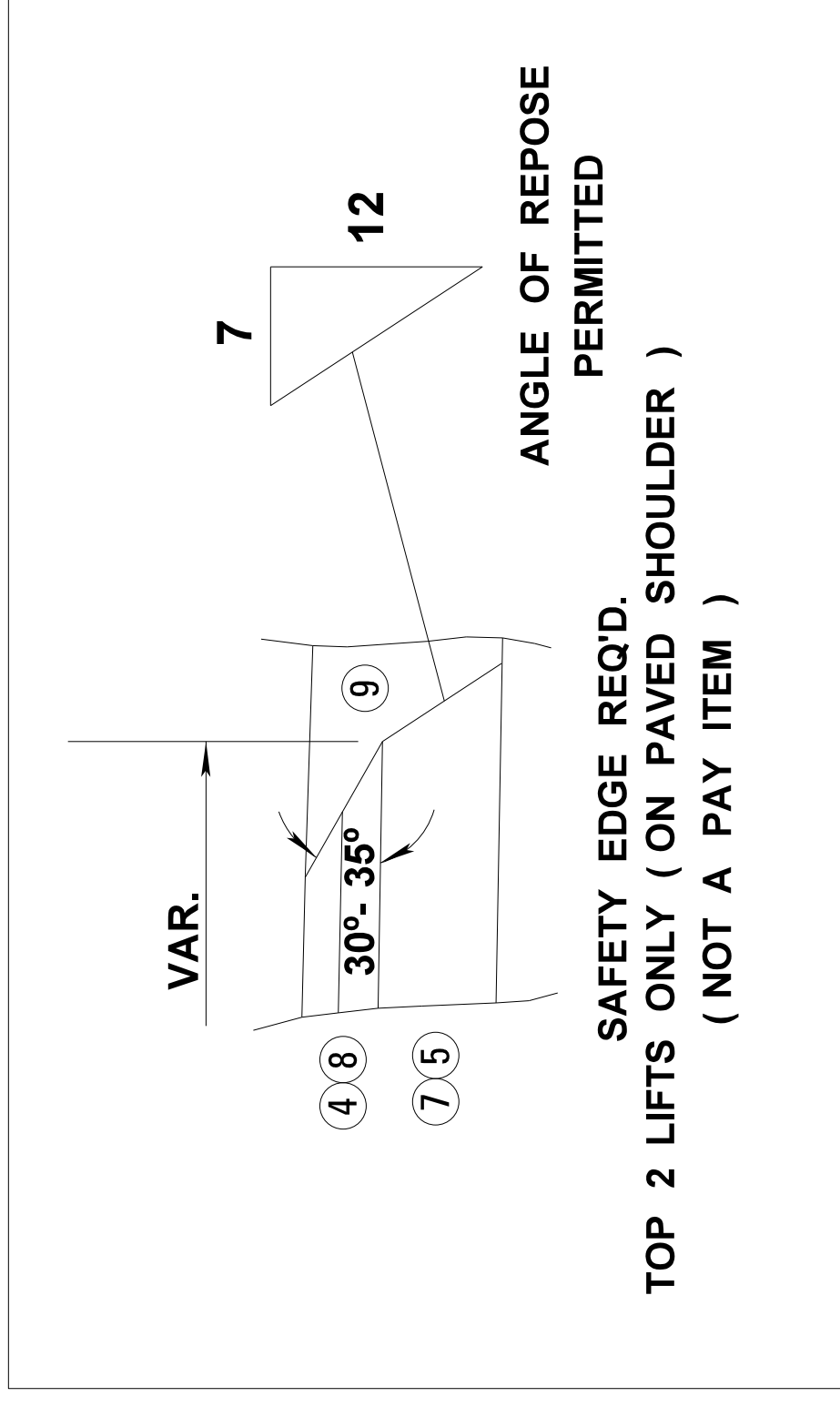
- STATION 327+06 TO STATION 336+46 - SOUTHWEST RAMP @ HWY. 82
  - STATION 333+26 TO STATION 339+66 - SOUTHEAST RAMP @ HWY. 82
  - STATION 367+90 TO STATION 374+30 - NORTHWEST RAMP @ HWY. 82
  - STATION 370+69 TO STATION 379+49 - NORTHEAST RAMP @ HWY. 82
- N.T.S.



**CUT SECTION**

**TYPICAL SECTION RAMP EXTENSIONS @ SR 82 INTERCHANGE**

- STATION 327+06 TO STATION 336+46 - SOUTHWEST RAMP @ HWY. 82
  - STATION 333+26 TO STATION 339+66 - SOUTHEAST RAMP @ HWY. 82
  - STATION 367+90 TO STATION 374+30 - NORTHWEST RAMP @ HWY. 82
  - STATION 370+69 TO STATION 379+49 - NORTHEAST RAMP @ HWY. 82
- N.T.S.



BY	REVISION	DATE
ML	DELETED SECTION	12/7/20
ML	ADDED TEXT	12/7/20

DESIGN TEAM: \_\_\_\_\_ CHECKED: \_\_\_\_\_ DATE: \_\_\_\_\_

FILENAME: TS-3.DGN

WORKING NUMBER: TS-3

SHEET NUMBER: 7

COUNTY: MONTGOMERY

PROJ. NO.: IM-0055-03(094)

MISSISSIPPI DEPARTMENT OF TRANSPORTATION

**TYPICAL SECTION**

**RAMP EXTENSIONS AT**

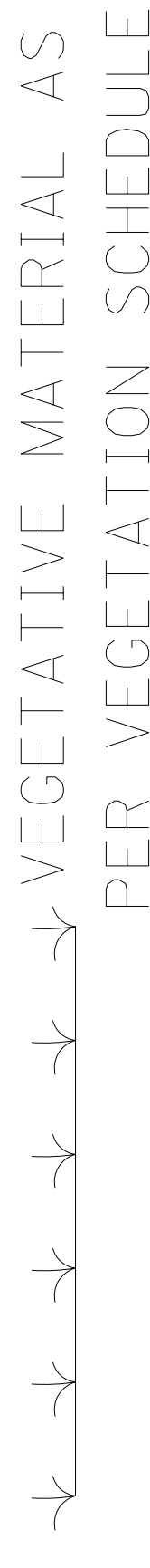
**HWY. 82 @ WINONA**

STATE	PROJECT NO.
MISS.	IM-0055-03(094)



1/2 FILL SECTION

① 6" & VAR. GRANULAR MATERIAL (CL. 3 GR. D)



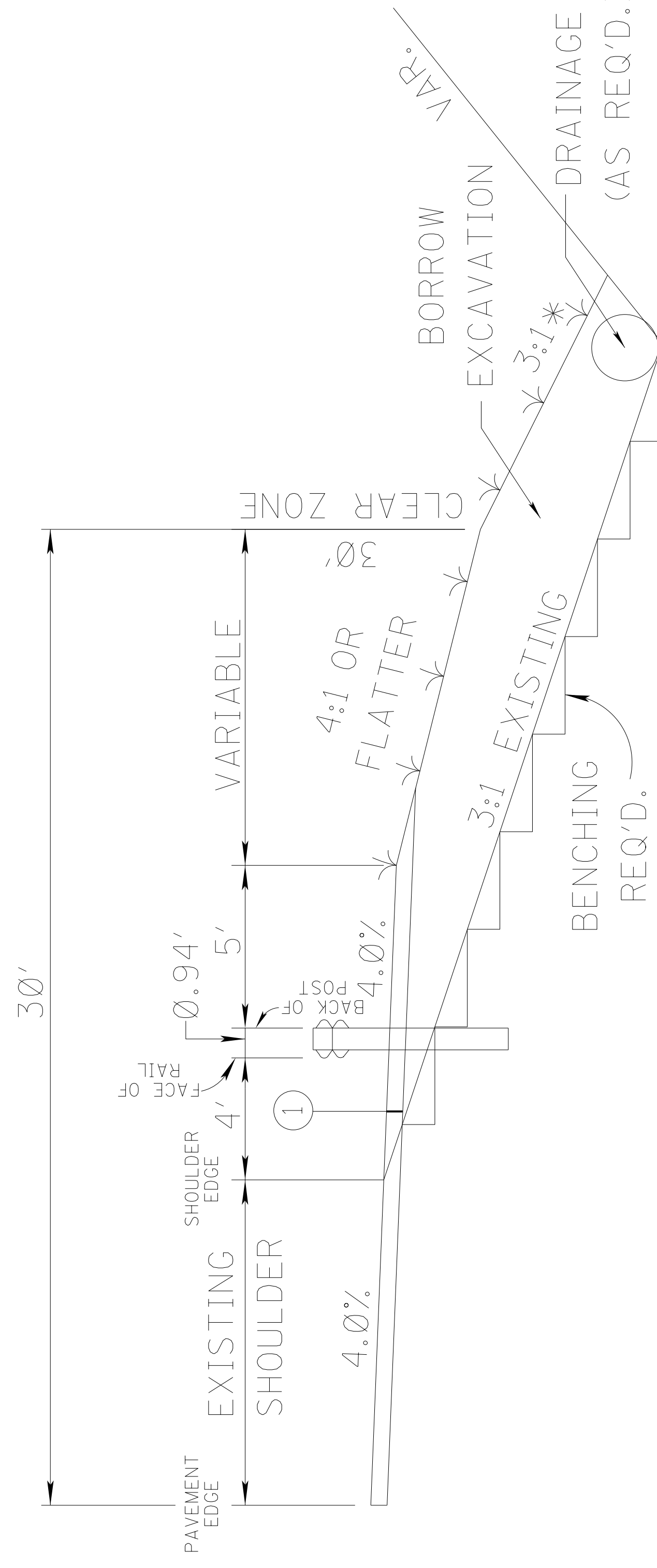
\* SEE SHEET WORKING NUMBER SD-4R-1

**TYPICAL SECTION OF SLOPE EXTENSION AT GUARD RAIL TERMINAL SECTION FOR ROADSIDE HAZARDS**

ROADWAY DESIGN DIVISION MISSISSIPPI DEPARTMENT OF TRANSPORTATION

NOTES:

1. COST OF CLEARING AND GRUBBING FOR SLOPE EXTENSION BEYOND 50' IS TO BE INCLUDED IN PAY ITEM NO. 201-D.
2. EROSION CONTROL ITEMS ON EXTENDED SLOPES WILL BE PAID UNDER THE APPROPRIATE PAY ITEM.



1/2 CUT SECTION

**TYPICAL SECTION OF SLOPE EXTENSION AT GUARD RAIL TERMINAL SECTION FOR ROADSIDE HAZARDS**

12/7/20	REVISION	TEXT
BY	REVISION	
DATE	DESIGN TEAM	CHECKED
		DATE

MISSISSIPPI DEPARTMENT OF TRANSPORTATION

**TYPICAL SECTION  
4R- INTERSTATE  
ROADSIDE HAZARDS**

COUNTY: MONTGOMERY  
WORKING NUMBER  
PROJ. NO.: IM-0055-03(094)  
TS-4R-1

FILENAME: RWD.CEL  
SHEET NUMBER  
9




STATE	PROJECT NO.
MISS	IM-0055-03(094)

**SUMMARY OF QUANTITIES (SHEET 1)**

PAY ITEM NO.	PAY ITEM	UNIT	MONTGOMERY : 107824-301000	
			Prelim	Final
201-A001	Clearing and Grubbing	LS	1	
201-D002	Random Clearing	ACRE	4	
202-B007	Removal of Asphalt Pavement, All Depths	SY	600	
202-B045	Removal of Cement Treated Base, All Depths	SY	600	
202-B051	Removal of Concrete Curb	LF	990	
202-B060	Removal of Concrete Median Barrier	LF	450	
202-B067	Removal of Concrete Pavement Punchouts, 8" Depth	SY	122	
202-B150	Removal of Guard Rail Including Post, Blockouts & Hardware	LF	32,540	
202-B152	Removal of Guard Rail Terminal End Section	EA	69	
202-B177	Removal of Low Mast Lighting Assembly	EA	4	
202-B240	Removal of Traffic Stripe	LF	3,500	
202-B251	Removal of Underground Electric Wire	LF	970	
203-A001	Unclassified Excavation, FM, AH	CY	4,063	
203-EX020	Borrow Excavation, AH, FME, Class B9	CY	3,000	
203-G001	Excess Excavation, FM, AH	CY	1,905	
209-A005	Geotextile Stabilization, Type V, Non-Woven	SY	4,277	
213-C001	Superphosphate	TON	2	
217-A001	Ditch Liner	SY	1,000	
220-A001	Insect Pest Control	ACRE	2	
223-A001	Mowing	ACRE	8	
225-A001	Grassing	ACRE	4	
225-B001	Agricultural Limestone	TON	8	
225-C001	Mulch, Vegetative Mulch	TON	8	
226-A001	Temporary Grassing	ACRE	4	
234-A001	Temporary Silt Fence	LF	3,500	
237-A002	Wattles, 20"	LF	1,000	
304-B002	Granular Material, Class 3, Group D	TON	14,450	
304-F001	3/4" and Down Crushed Stone Base	TON	2,600	
	OR			
304-F002	Size 610 Crushed Stone Base	TON	2,600	
	OR			
304-F003	Size 825B Crushed Stone Base	TON	2,600	
907-402-A002	Open Graded Friction Course, 9.5-mm Mixture	TON	18,071	
907-402-B001	Bituminous Tack Coat	GAL	29,089	
403-A001	12.5-mm, HT, Asphalt Pavement	TON	403	
403-A003	12.5-mm, ST, Asphalt Pavement	TON	806	
403-A006	19-mm, ST, Asphalt Pavement	TON	932	
403-A013	9.5-mm, HT, Asphalt Pavement	TON	878	
403-A015	9.5-mm, ST, Asphalt Pavement	TON	11,842	
403-S001	Joint Sealant	MI	47	
405-A001	Stone Matrix Asphalt, 12.5 mm Mixture	TON	45,350	
405-A002	Stone Matrix Asphalt, 9.5 mm Mixture	TON	34,010	
406-D001	Fine Milling of Bituminous Pavement, All Depths	SY	528,900	
407-A001	Asphalt for Tack Coat	GAL	118,700	

- ① TO BE USED FOR BRIDGES AT I-55/N. MISSION ROAD AND I-55/US 82
- ② STRIPE SHALL BE REMOVED BY HYDROBLASTING OR OTHER APPROVED NON-DESTRUCTIVE METHOD
- ③ WIRE BACKING REQUIRED ON ALL SILT FENCE
- ④ TO BE USED AS DIRECTED BY THE PROJECT ENGINEER
- ⑤ QUANTITY INCLUDES 20% SHRINKAGE FACTOR.
- ⑥ 850 SY TO BE USED FOR MILLING CONCRETE BRIDGE ENDS.
- ⑦ FOUNDATION TO BE REMOVED TO A DEPTH OF 18" TO 24" BELOW GROUND.



	
<b>MISSISSIPPI DEPARTMENT OF TRANSPORTATION</b> <b>SUMMARY OF QUANTITIES</b>	
Date 12/07/2020	By Revision
Increased Quantity	Working Number SQ-1
Design Team FILENAME: SQS	Sheet Number 10
Date 02/21/202	Checked COUNTY: MONTGOMERY
PROJ NO: IM-0055-03(094)	Date 02/21/202



# ESTIMATED GUARDRAIL QUANTITIES

South Bound										North Bound									
Length	Side	Type	Terminal	Bridge End	Cable	Guard Rail	Delineator		Length	Side	Type	Terminal	Bridge End	Cable	Guard Rail	Delineator			
							White	Yellow								White	Yellow		
455	Out	Road	1		1	405	10		500	In	Road	1		1	450		11		
455	In	Road	1		1	405			600	Out	Road	1		1	550	13			
630	Out	Bridge	1	1		593	19		200	Out	Bridge	1	1		163	7			
605	In	Bridge	1	1		568		18	200	In	Bridge	1	1		163		7		
240	Out	Road	1		1	190	8		430	Out	Road@Br			2	355	9			
240	In	Road	1		1	190		8	460	In	Road@Br			2	385		10		
230	Out	Road	1		1	180	8		240	In	Road	1		1	190	8			
230	In	Road	1		1	180		8	225	In	Road	1		1	175		8		
1,180	Out	Bridge	1	1		1,143	33		225	Out	Road	1		1	175	8			
1,130	In	Bridge	1	1		1,093		32	200	In	Bridge	1	1		163		7		
150	Out	Barrier (82)	1			113	6		200	Out	Barrier (82)	1	1		163	7			
240	In	Road (82)	1		1	190		8	150	Out	Road (82)	1			113	6			
600	Out	Road	1		1	550	13		240	In	Road (82)	1		1	190		8		
780	Out	Road@Br			2	755	16		680	Out	Road	1		1	630	14			
825	In	Road@Br			2	800		17	160	Out	Road	1		1	110	6			
530	Out	Bridge	1	1		493	16		690	In	Bridge	1	1		653		20		
200	In	Bridge	1	1		163		7	740	Out	Bridge	1	1		703	22			
280	In	Road	1		1	230		9	540	In	Road@Br			2	465		11		
200	Out	Bridge	1	1		163	7		550	Out	Road@Br			2	475	16			
200	In	Bridge	1	1		163		7	450	In	Bridge	1	1		413		14		
105	Out	Road	1		1	55	4		530	Out	Bridge	1	1		493	16			
1,790	Out	Road	1		1	1,740	34		130	Out	Road@Br			2	55	4			
145	Out	Road	1		1	95	6		880	Out	Road	1		1	830	18			
150	Out	Barrier (Mission)	1			113	6		810	Out	Road	1		1	760	17			
220	In	Road	1		1	170		8	215	In	Road	1		1	165		7		
200	Out	Road	1		1	150	7		150	Out	Barrier (Mission)	1			113	6			
1,170	Out	Road	1		1	1,120	23		1,230	In	Road	1		1	1,180		24		
1,125	In	Road	1		1	1,075		22	1,300	Out	Road	1		1	1,250	25			
580	Out	Road	1		1	530	12		460	In	Road	1		1	410		10		
280	In	Road	1		1	230		9	550	Out	Road	1		1	500	12			
345	In	Road	1		1	295		11	440	Out	Road	1		1	390	10			
650	Out	Road	1		1	600	14		650	Out	Road	1		1	600	14			
680	In	Road	1		1	630		14	175	Out	Road	1		1	125	6			
175	In	Road	1		1	125		6	175	In	Road	1		1	125		6		
230	Out	Road	1		1	180	8		1,180	In	Road	1		1	1,130		23		
230	In	Road	1		1	180		8	320	Out	Road	1		1	270	8			
325	In	Road	1		1	275		8											
700	Out	Road	1		1	650	15												
480	Out	Road	1		1	430	11												
340	In	Road	1		1	290		8											
19,320			38	8	32	17,490	276	218	16,875			31	8	31	15,060	243	174		

Pay Item	Description	Unit	Quantity
202-B150	Removal of Guard Rail Including Post, Blockout & Hardware	LF	32,550
202-B152	Removal of Guard Rail Terminal End Section	Each	69
606-B001	Guard Rail, Class A, Type 1	LF	32,550
606-C003	Guard Rail, Cable Anchor, Type 1	Each	63
606-D005	Guard Rail, Bridge End Section, Type A	Each	12
606-D022	Guard Rail, Bridge End Section, Type 1	Each	4
606-E005	Guard Rail, Terminal Section, Flared	Each	69
630-F006	Delineators, Guard Rail, White	Each	519
630-F007	Delineators, Guard Rail, Yellow	Each	392

12/7/20	DELETED TEXT	BY	
	REVISION	BY	

MISSISSIPPI DEPARTMENT OF TRANSPORTATION

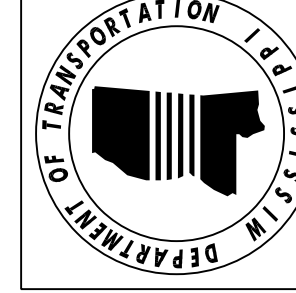
## ESTIMATED QUANTITIES

### GUARDRAIL

PROJ. NO.: IM-0055-03(094)  
COUNTY: Montgomery

FILENAME: RWD-EQ-001  
DESIGN TEAM: \_\_\_\_\_ CHECKED: \_\_\_\_\_ DATE: 2016-11-02

SHEET NUMBER  
**16**

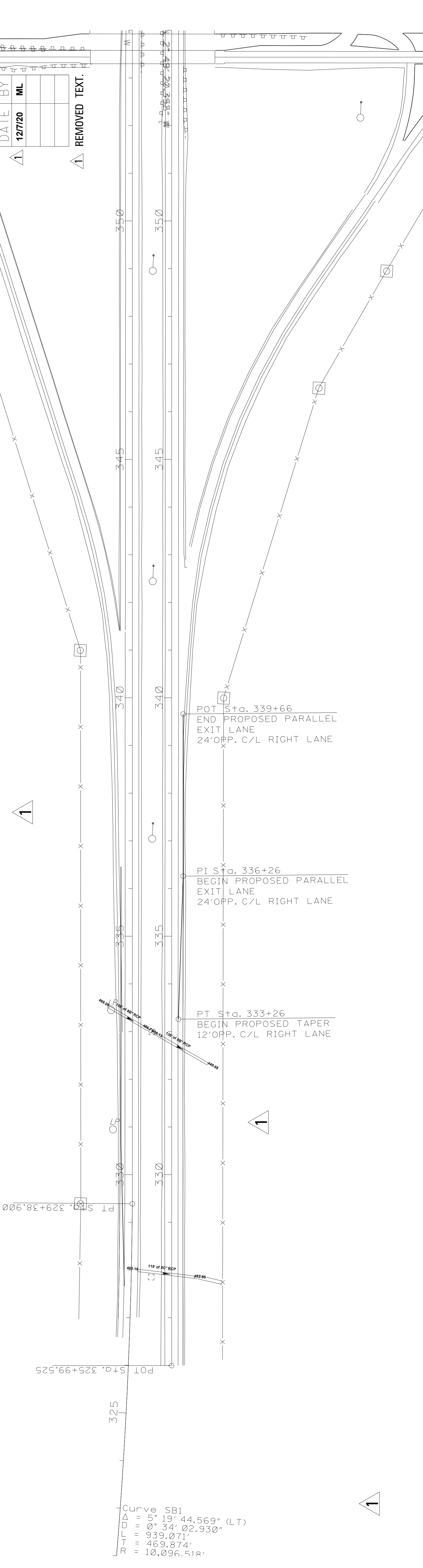
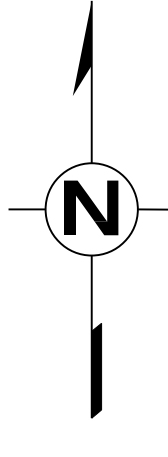


WORKING NUMBER  
EQ-4

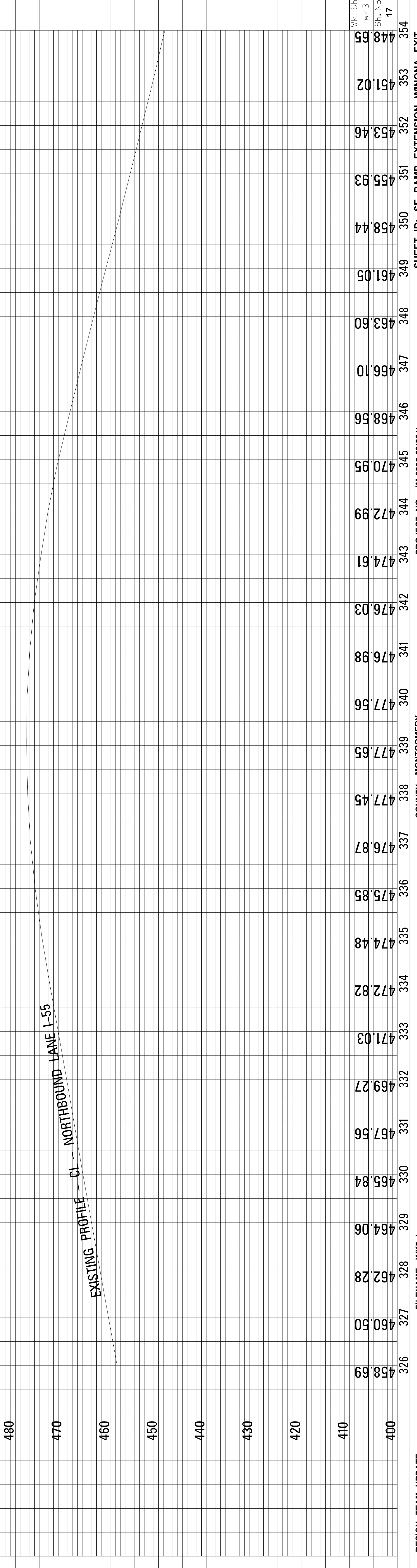
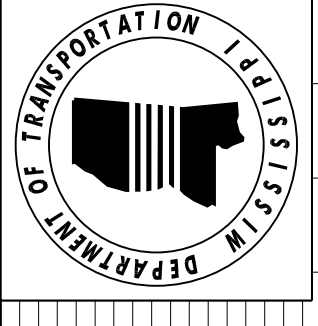
REVISIONS	DATE BY	ML
	12/7/20	

REMOVED TEXT.

REMOVAL AND RESET OF EXISTING DELINEATORS AND MILE MARKERS REQUIRED.  
NO PAY ITEM PROVIDED. WORK TO BE INCLUDED IN OTHER BID ITEMS.



Curve SB1  
 Δ = 5° 19' 44.569" (LT)  
 D = 0° 34' 02.930"  
 TR = 939.071'  
 T = 469.874'  
 R = 10,096.51R



400	410	420	430	440	450	460	470	480
458.69	460.50	462.28	464.06	465.84	467.56	469.27	471.03	472.82
474.48	475.85	476.87	477.45	477.65	477.56	476.98	476.03	474.61
472.99	470.95	468.56	466.10	463.60	461.05	458.44	455.93	453.46
451.02	448.65							

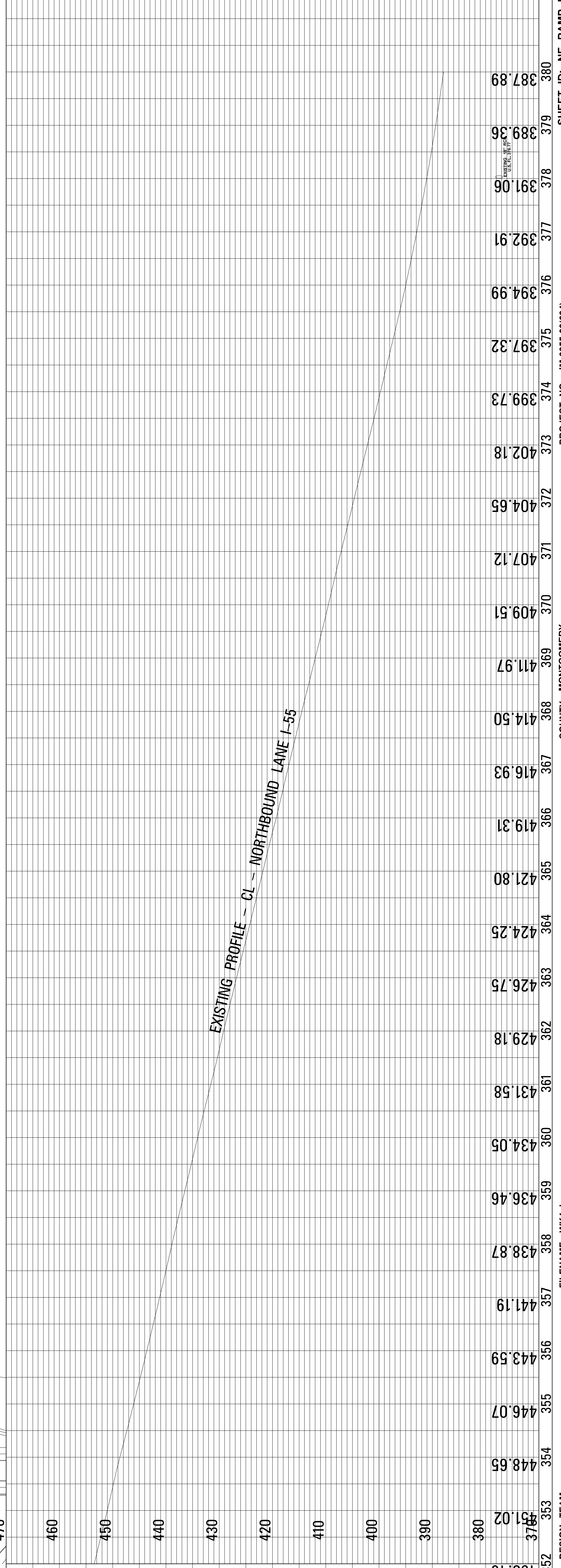
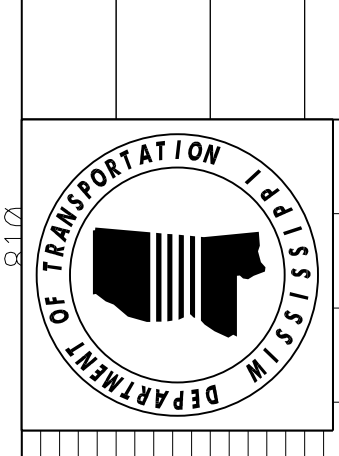
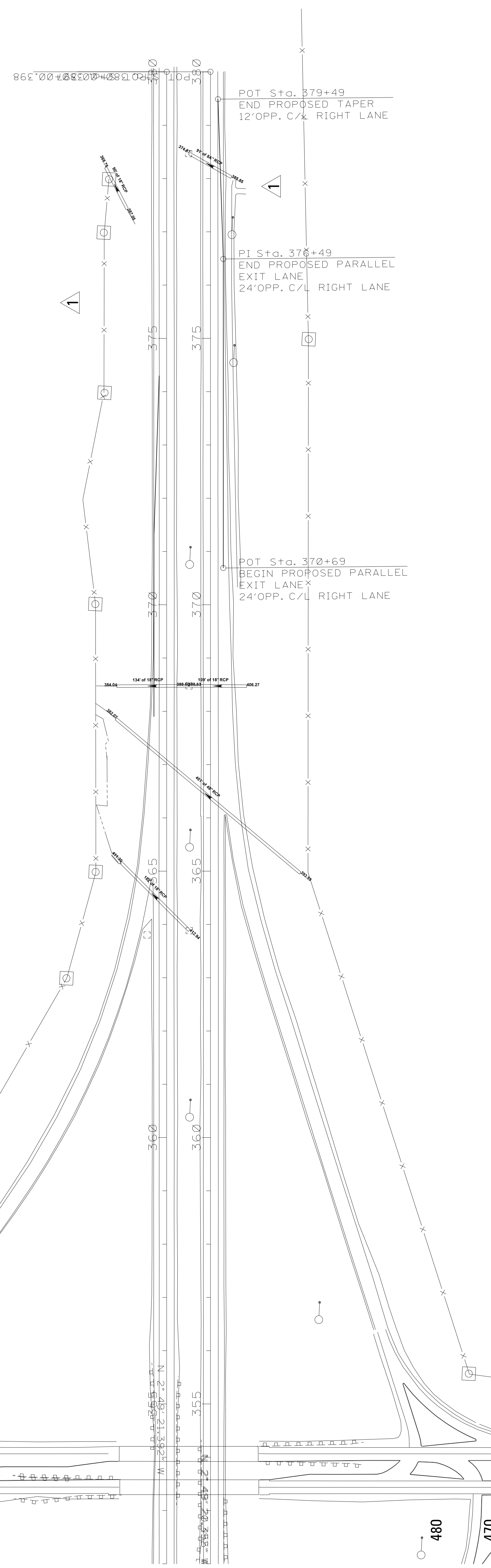
STATE	PROJECT NO.
MISS.	IM-0055-03(094)

REMOVAL AND RESET OF EXISTING DELINEATORS AND MILE MARKERS REQUIRED.  
NO PAY ITEM PROVIDED. WORK TO BE INCLUDED IN OTHER BID ITEMS.

REVISIONS

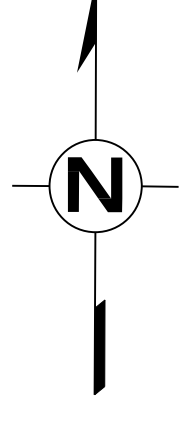
DATE	BY	ML
12/7/20		

REMOVED TEXT.



REVISIONS	DATE	BY	ML
	12/7/20		

REMOVED TEXT



REMOVAL AND RESET OF EXISTING DELINEATORS AND MILE MARKERS REQUIRED.  
NO PAY ITEM PROVIDED. WORK TO BE INCLUDED IN OTHER BID ITEMS.

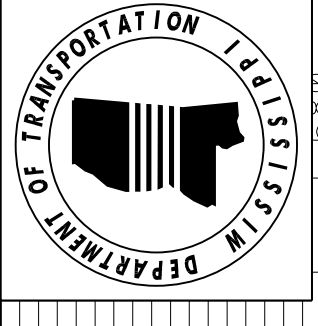
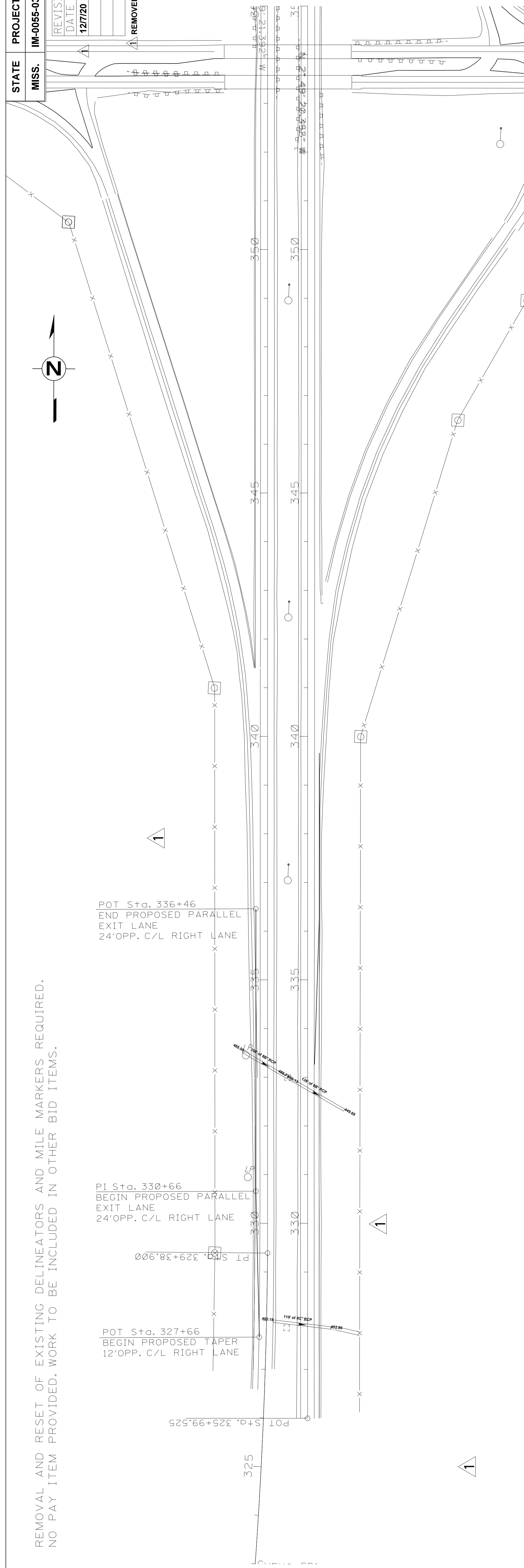
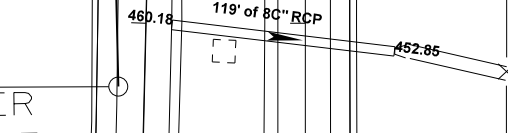
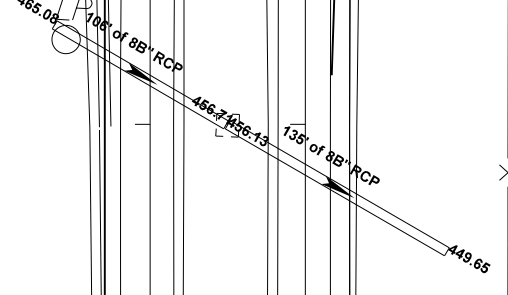
POT Sta. 336+46  
END PROPOSED PARALLEL  
EXIT LANE  
24' OPP. C/L RIGHT LANE

PI Sta. 330+66  
BEGIN PROPOSED PARALLEL  
EXIT LANE  
24' OPP. C/L RIGHT LANE

POT Sta. 327+66  
BEGIN PROPOSED TAPER  
12' OPP. C/L RIGHT LANE

PT Sta. 329+38.900

POT Sta. 325+99.525



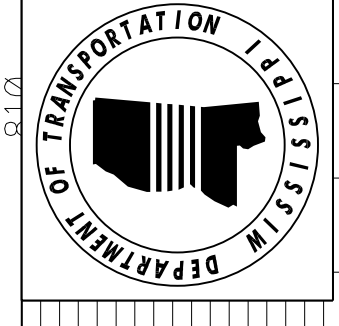
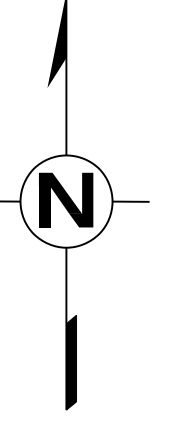
EXISTING PROFILE - CL - NORTHBOUND LANE I-55

480  
470  
460  
450  
440  
430  
420  
410  
400

WK. Sh.	446.48	449.76	451.01	453.46	455.91	458.45	461.00	463.55	466.12	468.59	470.99	473.06	474.73	476.03	477.00	477.49	477.75	477.48	476.92	475.94	474.53	472.89	471.14	469.41	467.68	465.96
19	355	354	353	352	351	350	349	348	347	346	345	344	343	342	341	340	339	338	337	336	335	334	333	332	331	330

REVISIONS	DATE	BY
1	12/7/20	ML

REMOVED TEXT

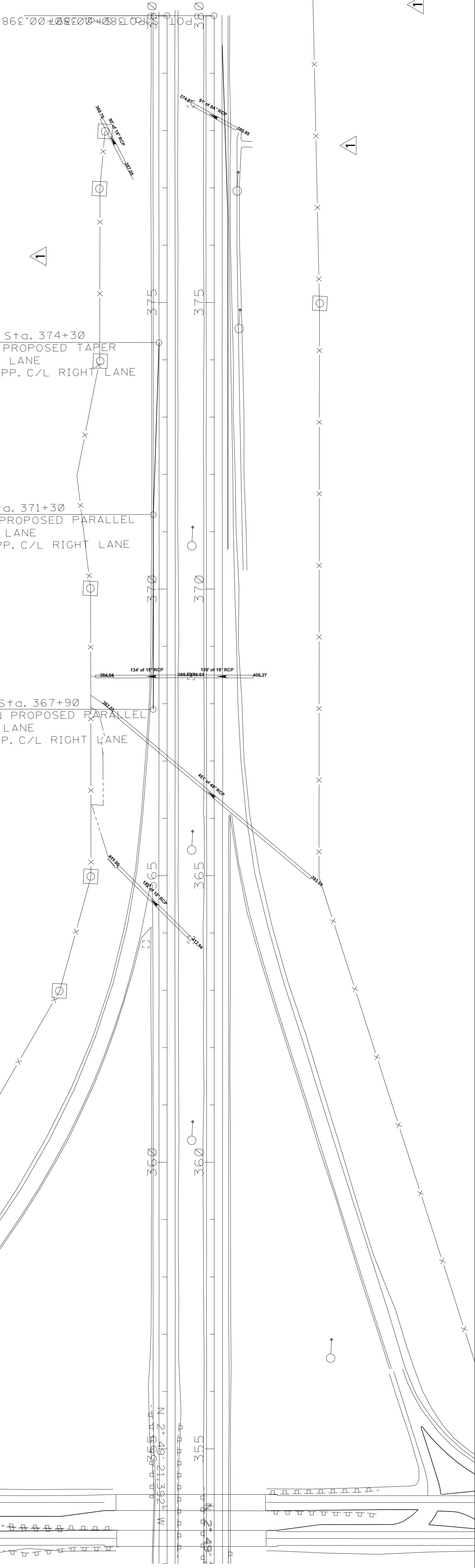


REMOVAL AND RESET OF EXISTING DELINEATORS AND MILE MARKERS REQUIRED.  
NO PAY ITEM PROVIDED. WORK TO BE INCLUDED IN OTHER BID ITEMS.

POT Sta. 374+30  
END PROPOSED TAPER  
EXIT LANE  
12' OPP. C/L RIGHT LANE

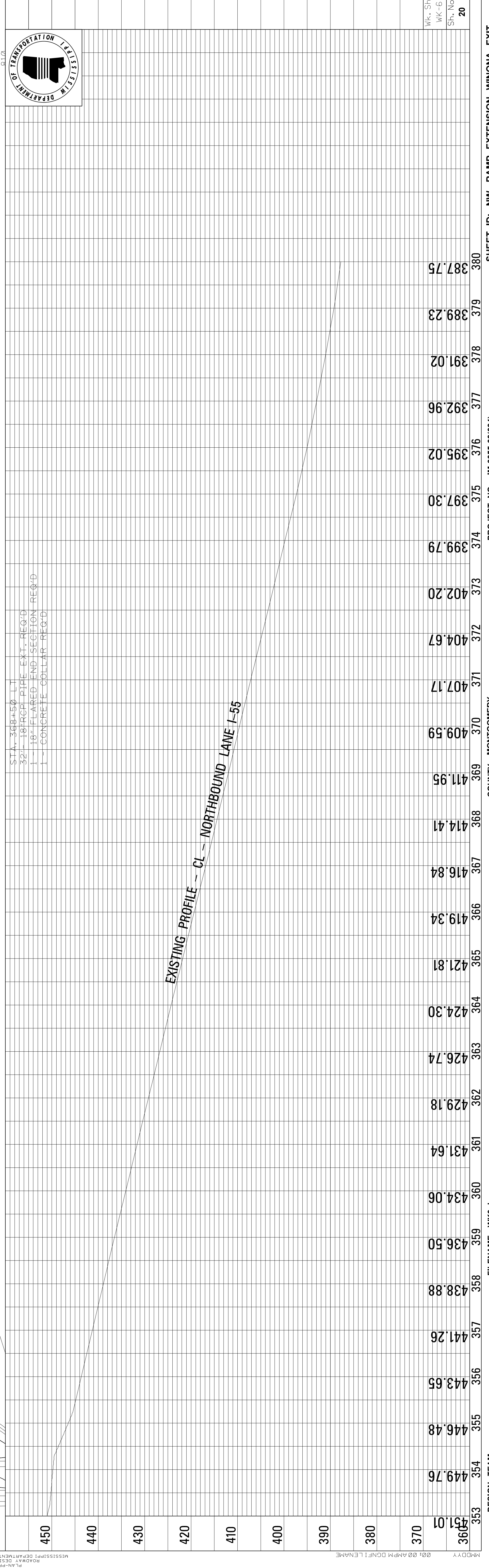
PI Sta. 371+30  
END PROPOSED PARALLEL  
EXIT LANE  
24' OPP. C/L RIGHT LANE

POT Sta. 367+90  
BEGIN PROPOSED PARALLEL  
EXIT LANE  
24' OPP. C/L RIGHT LANE



STA. 368+50 LT  
32' - 18" RCP PIPE - EXT. REQ'D  
1 - 18" FLARED END SECTION REQ'D  
1 - CONCRETE COLLAR REQ'D

EXISTING PROFILE -- CL -- NORTHBOUND LANE I-55

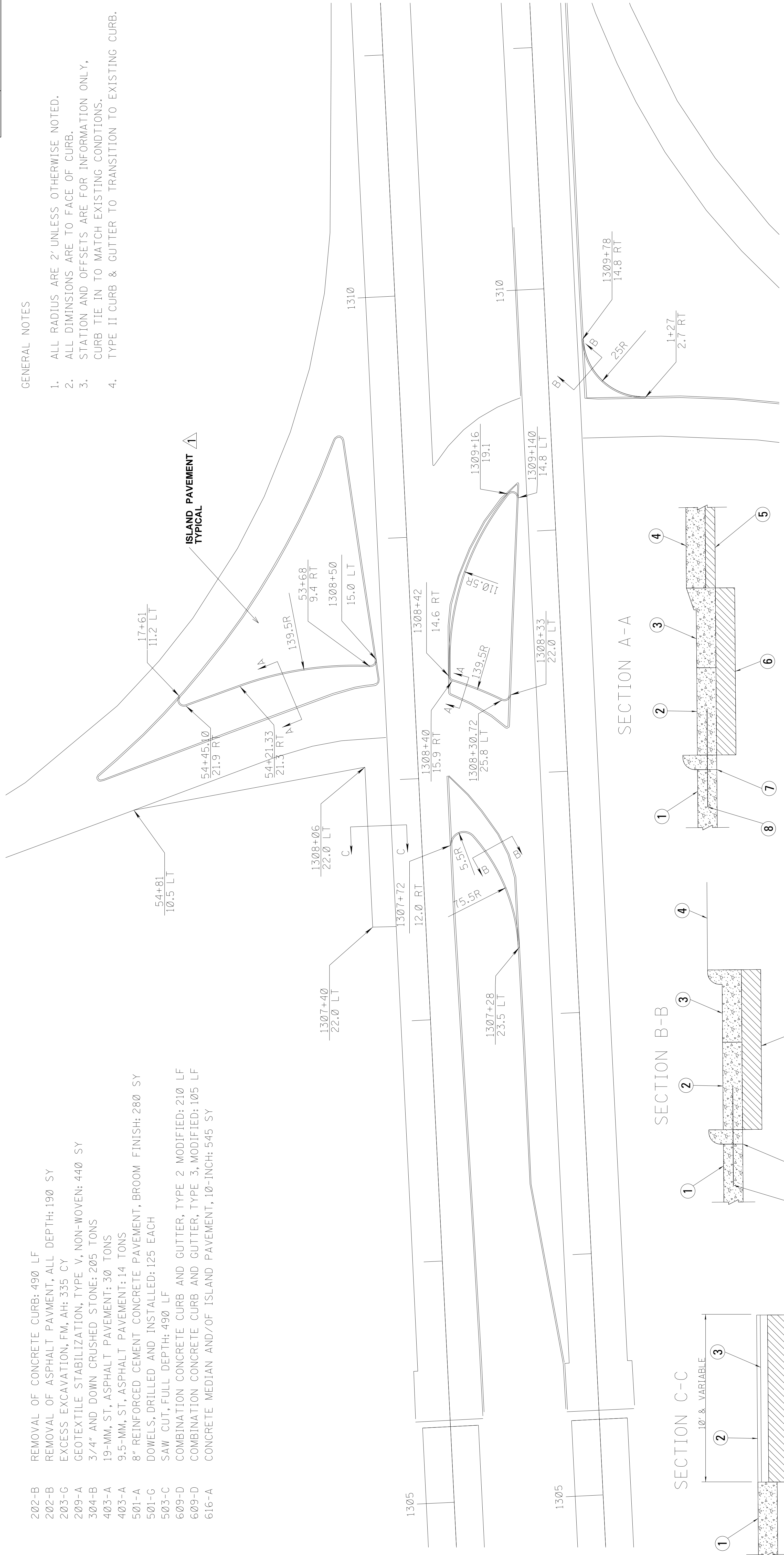


STATE	PROJECT NO.
MISS.	IM-0055-03(094)

GENERAL NOTES

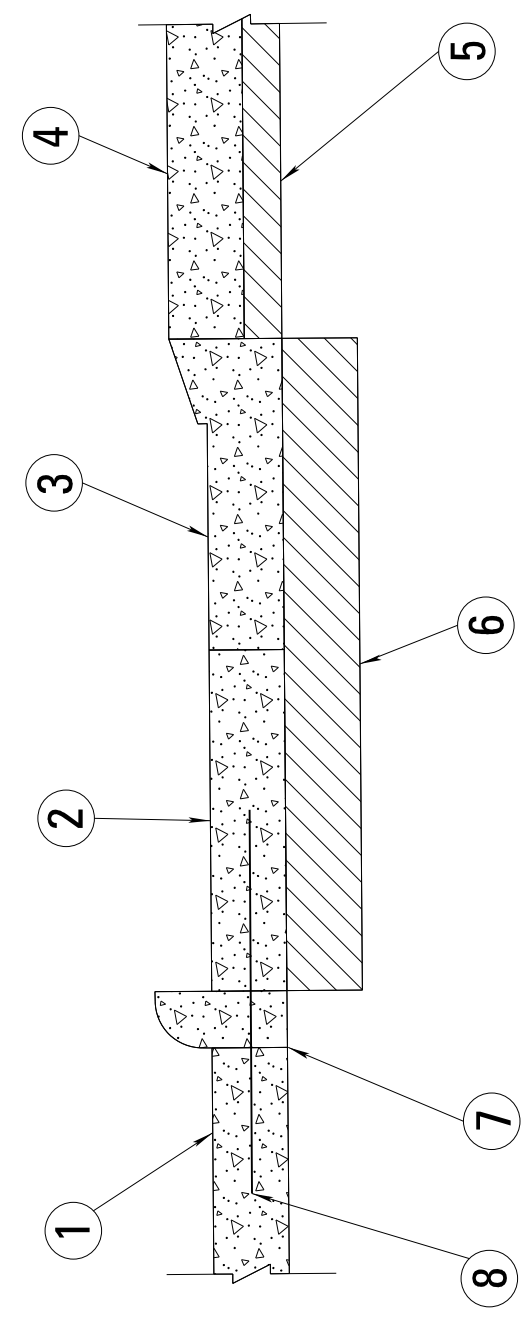
1. ALL RADIUS ARE 2' UNLESS OTHERWISE NOTED.
2. ALL DIMENSIONS ARE TO FACE OF CURB.
3. STATION AND OFFSETS ARE FOR INFORMATION ONLY, CURB TIE IN TO MATCH EXISTING CONDITIONS.
4. TYPE II CURB & GUTTER TO TRANSITION TO EXISTING CURB.

- 202-B REMOVAL OF CONCRETE CURB: 490 LF
- 202-B REMOVAL OF ASPHALT PAVEMENT, ALL DEPTH: 190 SY
- 203-G EXCESS EXCAVATION, FM, AH: 335 CY
- 209-A GEOTEXTILE STABILIZATION, TYPE V, NON-WOVEN: 440 SY
- 304-B 3/4" AND DOWN CRUSHED STONE: 205 TONS
- 403-A 19-MM, ST, ASPHALT PAVEMENT: 30 TONS
- 403-A 9.5-MM, ST, ASPHALT PAVEMENT: 14 TONS
- 501-A 8" REINFORCED CEMENT CONCRETE PAVEMENT, BROOM FINISH: 280 SY
- 501-C DOWELS, DRILLED AND INSTALLED: 125 EACH
- 503-C SAW CUT, FULL DEPTH: 490 LF
- 609-D COMBINATION CONCRETE CURB AND GUTTER, TYPE 2 MODIFIED: 210 LF
- 609-D COMBINATION CONCRETE CURB AND GUTTER, TYPE 3, MODIFIED: 105 LF
- 616-A CONCRETE MEDIAN AND/OFF ISLAND PAVEMENT, 10'-INCH: 545 SY



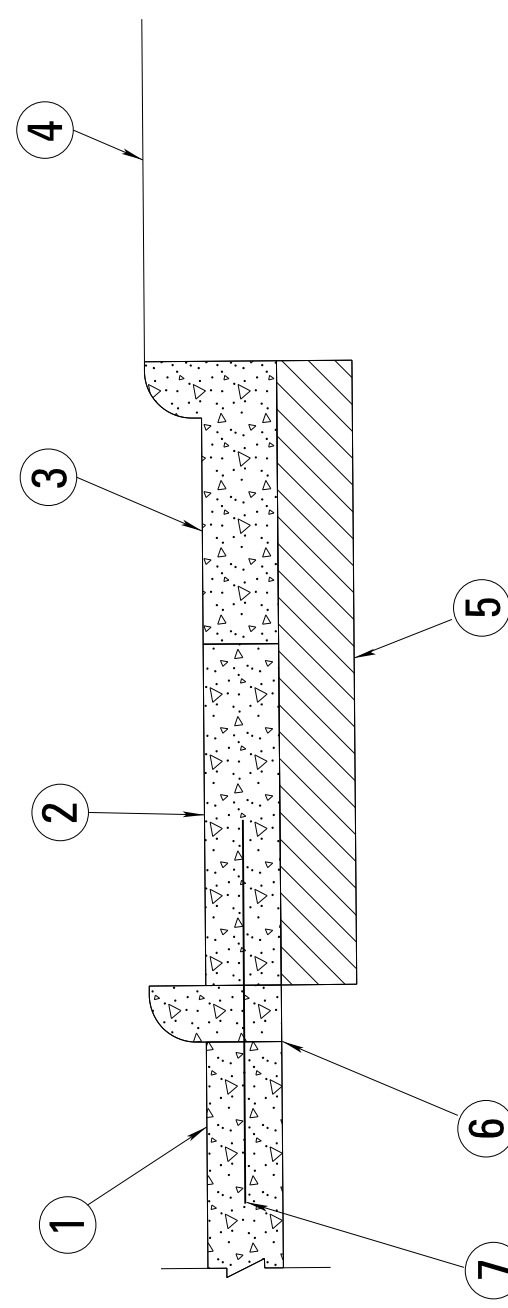
ISLAND PAVEMENT  
TYPICAL

SECTION A-A



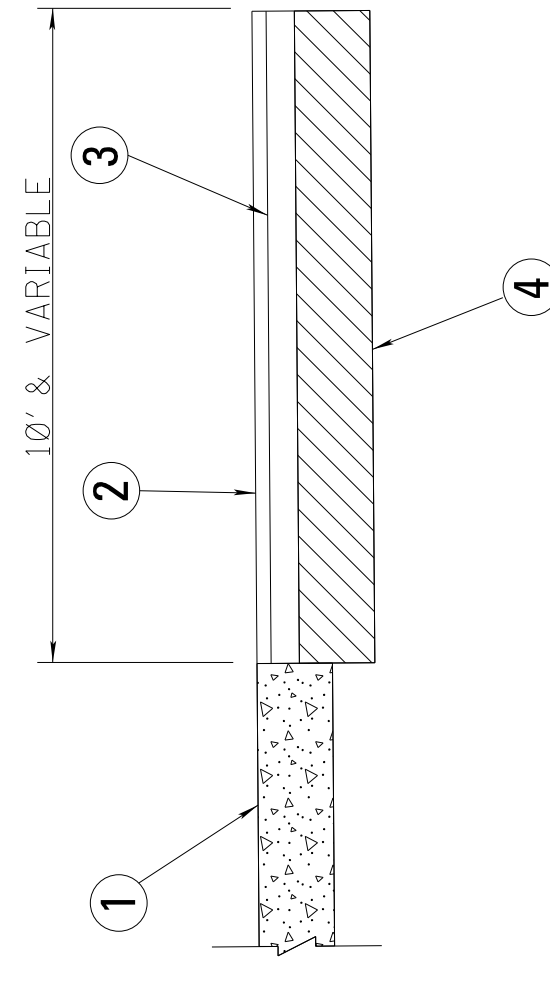
- 1 8" EXISTING CONCRETE PAVEMENT
- 2 8" REINFORCED CONCRETE PAVEMENT (VARIABLE WIDTH) REQ'D
- 3 TYPE 2 MODIFIED CONCRETE CURB & GUTTER REQ'D
- 4 10" CONCRETE ISLAND PAVEMENT REQ'D
- 5 4" CRUSHED STONE W/GEOTEXTILE TYPE V (NON-WOVEN) REQ'D
- 6 8" CRUSHED STONE W/GEOTEXTILE TYPE V (NON-WOVEN) REQ'D
- 7 SAW CUT EXISTING CURB REQ'D
- 8 #4 REBAR, 30" LONG, 30" O.C. (DRILLED & INSTALLED)

SECTION B-B



- 1 8" EXISTING CONCRETE PAVEMENT
- 2 8" REINFORCED CONCRETE PAVEMENT (VARIABLE WIDTH) REQ'D
- 3 TYPE 3 MODIFIED CONCRETE CURB & GUTTER REQ'D
- 4 BACKFILL BEHIND CURB REQ'D
- 5 8" CRUSHED STONE W/GEOTEXTILE TYPE V (NON-WOVEN) REQ'D
- 6 SAW CUT EXISTING CURB REQ'D
- 7 #4 REBAR, 30" LONG, 30" O.C. (DRILLED & INSTALLED)

SECTION C-C



- 1 8" EXISTING CONCRETE PAVEMENT
- 2 1.5" ASPHALT PAVEMENT, 9.5MM, ST
- 3 3.0" ASPHALT PAVEMENT, 19MM, ST
- 4 8" CRUSHED STONE W/GEOTEXTILE TYPE V (NON-WOVEN) REQ'D

MISSISSIPPI DEPARTMENT OF TRANSPORTATION

**HWY. 82 INTERCHANGE (EAST)**

PROJ. NO.: IM-0055-03(094)  
COUNTY: MONTGOMERY

WORKING NUMBER: WK-7

FILE NAME: UPDATE  
DESIGN TEAM: UPDATE  
CHECKED: UPDATE  
DATE: UPDATE

SHEET NUMBER: 21



<b>STATE</b>	<b>PROJECT NO.</b>
MISS.	IM-0055-03(094)

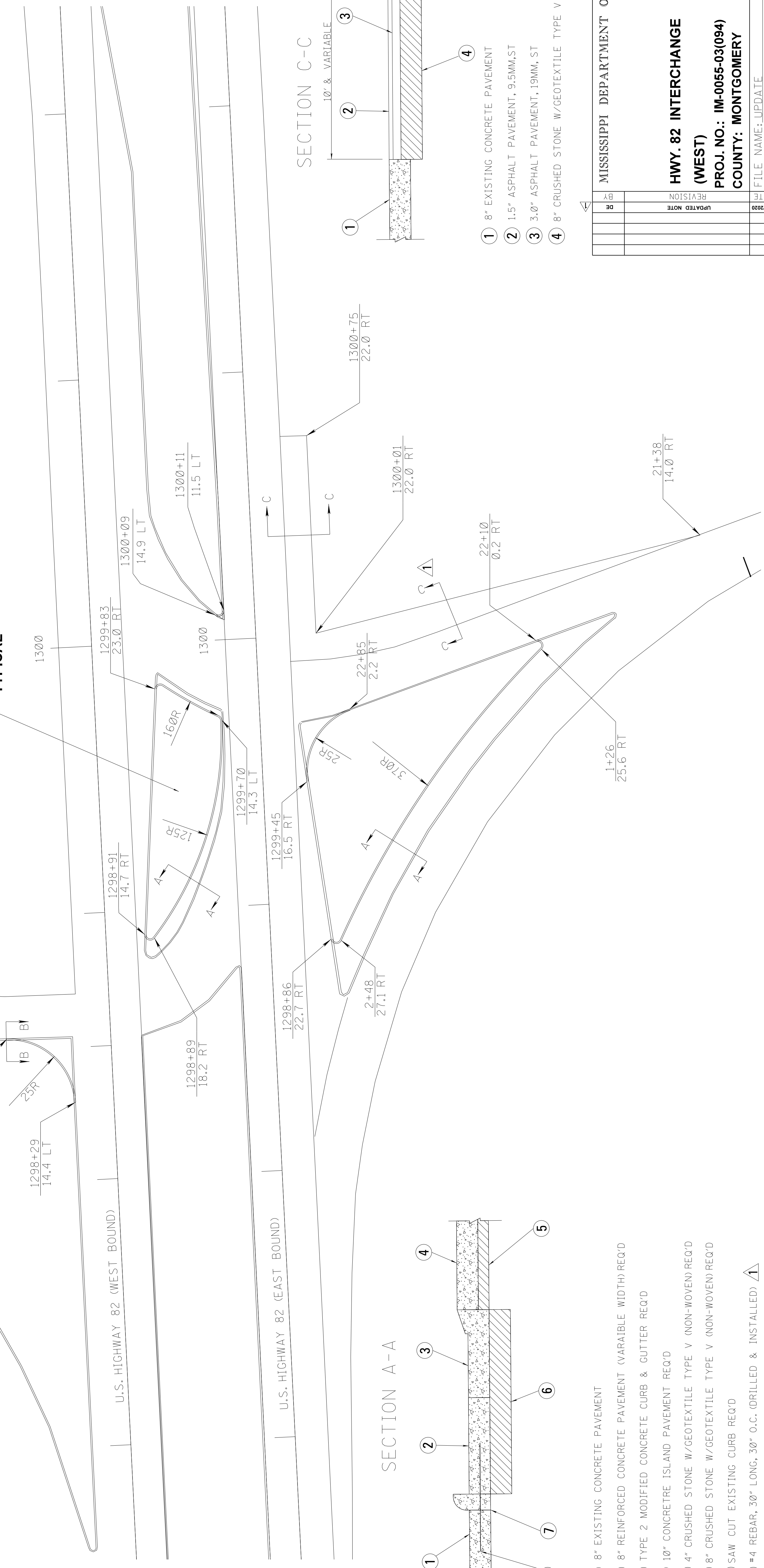
- 202-B REMOVAL OF CONCRETE CURB: 500 LF
- 202-B REMOVAL OF ASPHALT PAVEMENT, ALL DEPTH: 400 SY
- 203-C EXCESS EXCAVATION, FM, AH: 450 CY
- 209-A GEOTEXTILE STABILIZATION, TYPE V, NON-WOVEN: 175 SY
- 304-B 3/4" AND DOWN CRUSHED STONE: 270 TONS
- 403-A 19-MM, ST, ASPHALT PAVEMENT: 40 TONS
- 403-A 9.5-MM, ST, ASPHALT PAVEMENT: 20 TONS
- 501-A 8" REINFORCED CEMENT CONCRETE PAVEMENT, BROOM FINISH: 300 SY
- 501-G DOWELS, DRILLED AND INSTALLED: 140 EACH
- 503-C SAW CUT, FULL DEPTH: 500 LF
- 609-D COMBINATION CONCRETE CURB AND GUTTER, TYPE 2 MODIFIED: 310 LF
- 609-D COMBINATION CONCRETE CURB AND GUTTER, TYPE 3, MODIFIED: 45 LF
- 616-A CONCRETE MEDIAN AND/OF ISLAND PAVEMENT, 10-INCH: 610 SY

- 1 8" EXISTING CONCRETE PAVEMENT
- 2 8" REINFORCED CONCRETE PAVEMENT (VARIAIBLE WIDTH) REQ'D
- 3 TYPE 3 MODIFIED CONCRETE CURB & GUTTER REQ'D
- 4 BACKFILL BEHIND CURB REQ'D
- 5 8" CRUSHED STONE W/GEOTEXTILE TYPE V (NON-WOVEN) REQ'D
- 6 SAW CUT EXISTING CURB REQ'D
- 7 #4 REBAR, 30" LONG, 30" O.C. (DRILLED & INSTALLED)

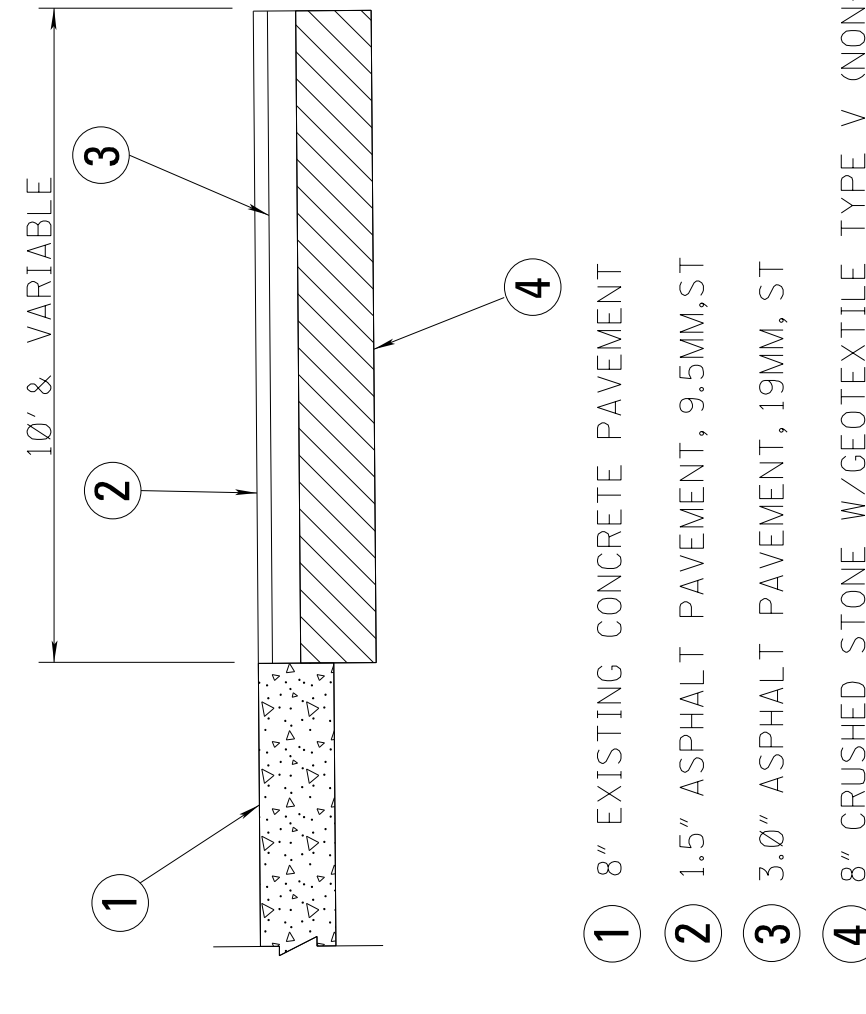
GENERAL NOTES

- 1. ALL RADII ARE 2' UNLESS OTHERWISE NOTED.
- 2. ALL DIMENSIONS ARE TO FACE OF CURB.
- 3. STATION AND OFFSETS ARE FOR INFORMATION ONLY, CURB TIE IN TO MATCH EXISTING CONDITIONS.
- 4. TYPE II CURB & GUTTER TO TRANSITION TO EXISTING CURB.

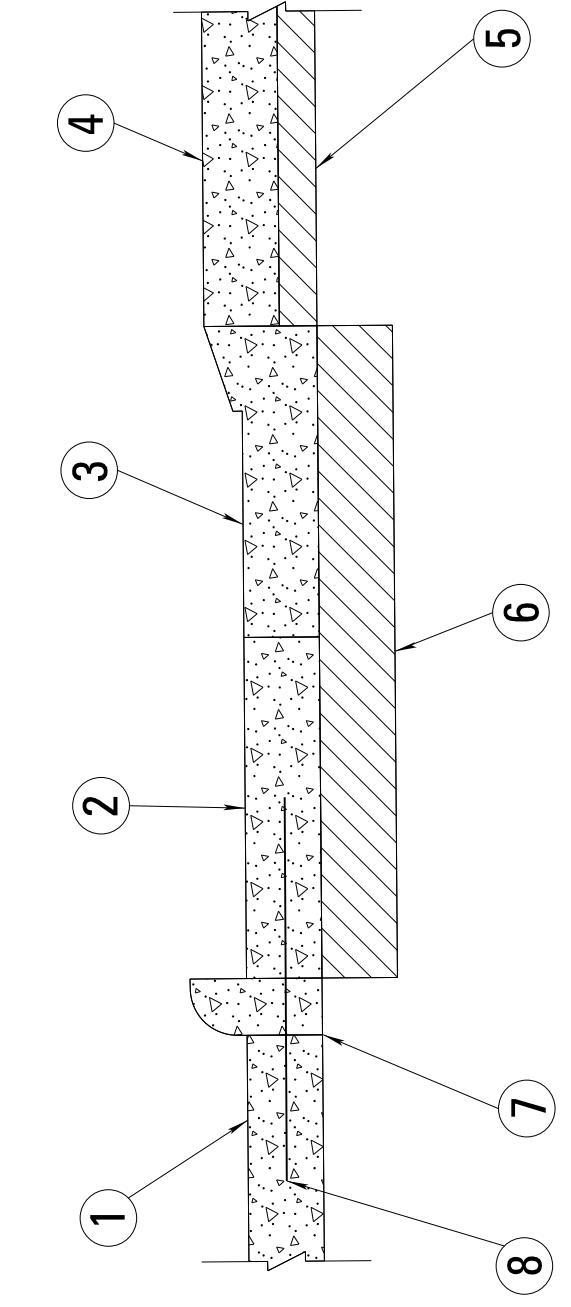
ISLAND PAVEMENT TYPICAL



SECTION C-C



SECTION A-A



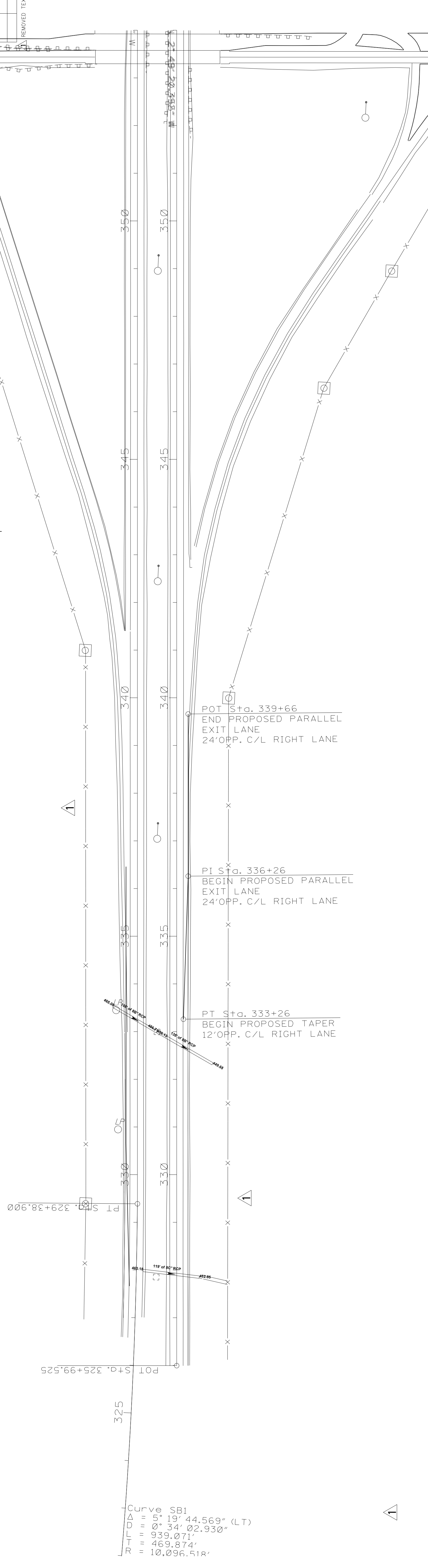
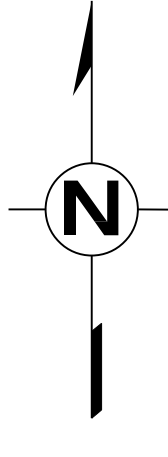
MISSISSIPPI DEPARTMENT OF TRANSPORTATION	
HWY. 82 INTERCHANGE (WEST)	
PROJ. NO.: IM-0055-03(094)	
COUNTY: MONTGOMERY	
12/07/2020	FILE NAME: _UPDATE
BY	DESIGN TEAM: _UPDATE
REVISION	CHECKED: _UPDATE
UPDATED NOTE	DATE: _UPDATE
WORKING NUMBER	DATE: _UPDATE
WK - 8	DATE: _UPDATE
SHEET NUMBER	DATE: _UPDATE
22	DATE: _UPDATE



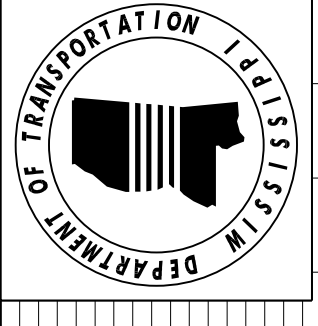


REVISIONS	DATE	BY	ML
1	12/7/28	ML	

REMOVAL AND RESET OF EXISTING DELINEATORS AND MILE MARKERS REQUIRED.  
NO PAY ITEM PROVIDED. WORK TO BE INCLUDED IN OTHER BID ITEMS.



Curve SB1  
 $\Delta = 5^{\circ} 19' 44.569''$  (LT)  
 $D = 0^{\circ} 34' 02.930''$   
 $L = 939.071'$   
 $T = 469.874'$   
 $R = 10,096.51R$

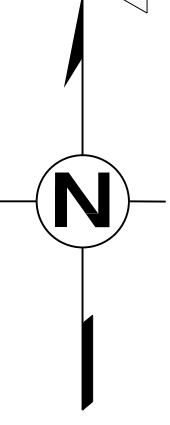


480  
470  
460  
450  
440  
430  
420  
410  
400

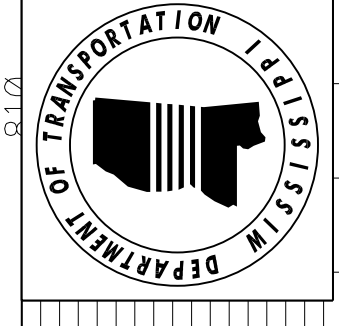
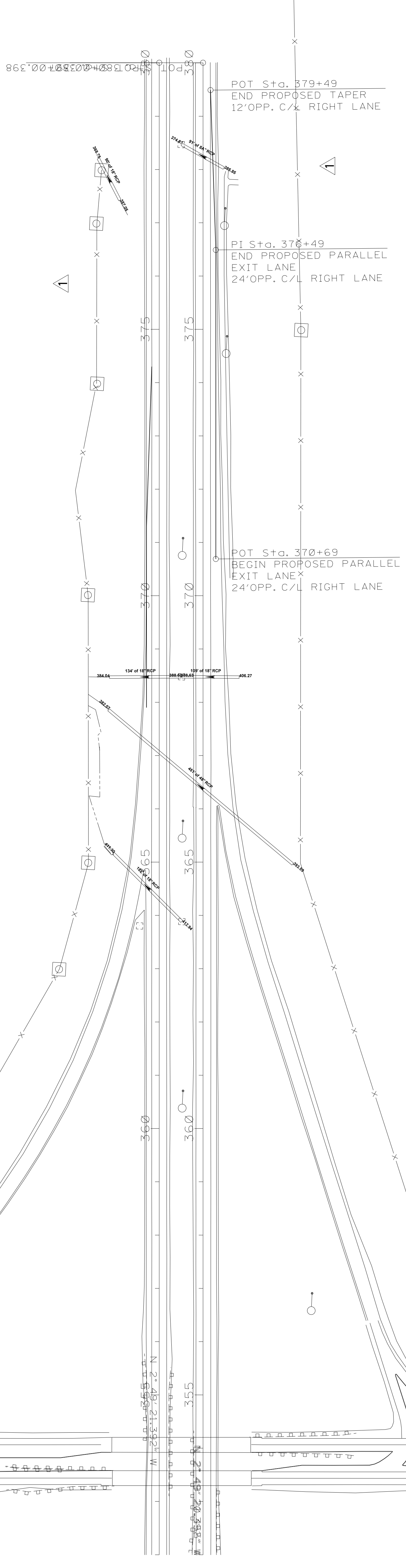
EXISTING PROFILE - CL - NORTHBOUND LANE I-55

458.69	460.50	462.28	464.06	465.84	467.56	469.27	471.03	472.82	474.48	475.85	476.87	477.45	477.65	477.56	476.98	476.03	474.61	472.99	470.95	468.56	466.10	463.60	461.05	458.44	455.93	453.46	451.02	448.65
326	327	328	329	330	331	332	333	334	335	336	337	338	339	340	341	342	343	344	345	346	347	348	349	350	351	352	353	354

REVISIONS	
DATE	BY
12/7/20	ML



REMOVAL AND RESET OF EXISTING DELINEATORS AND MILE MARKERS REQUIRED.  
NO PAY ITEM PROVIDED. WORK TO BE INCLUDED IN OTHER BID ITEMS.



PLAN PROFILE  
ROADWAY DESIGN DIVISION  
MISSISSIPPI DEPARTMENT OF TRANSPORTATION

EXISTING PROFILE - CL - NORTHBOUND LANE I-55

453.46	352	448.65	354	443.59	356	438.87	358	436.46	359	434.05	360	424.25	364	421.80	365	419.31	366	416.93	367	414.50	368	411.97	369	409.51	370	407.12	371	404.65	372	402.18	373	399.73	374	397.32	375	394.99	376	392.91	377	391.06	378	389.36	379	387.89	380
--------	-----	--------	-----	--------	-----	--------	-----	--------	-----	--------	-----	--------	-----	--------	-----	--------	-----	--------	-----	--------	-----	--------	-----	--------	-----	--------	-----	--------	-----	--------	-----	--------	-----	--------	-----	--------	-----	--------	-----	--------	-----	--------	-----	--------	-----

REVISIONS	DATE	BY
12/7/20	ML	
REMOVED TEXT		

REMOVAL AND RESET OF EXISTING DELINEATORS AND MILE MARKERS REQUIRED.  
NO PAY ITEM PROVIDED. WORK TO BE INCLUDED IN OTHER BID ITEMS.

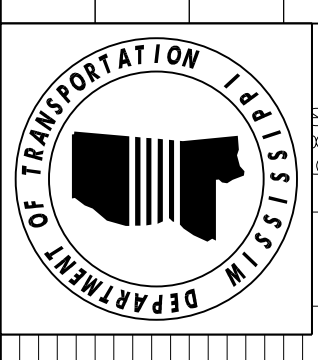
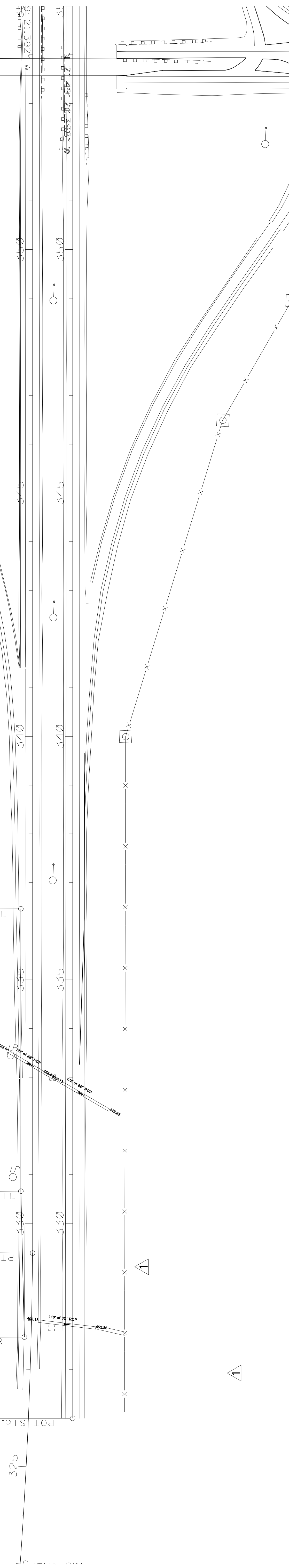
POT Sta. 336+46  
END PROPOSED PARALLEL  
EXIT LANE  
24'OPP. C/L RIGHT LANE

PI Sta. 330+66  
BEGIN PROPOSED PARALLEL  
EXIT LANE  
24'OPP. C/L RIGHT LANE

POT Sta. 327+66  
BEGIN PROPOSED TAPER  
12'OPP. C/L RIGHT LANE

PT Sta. 329+38.900

POT Sta. 325+99.525

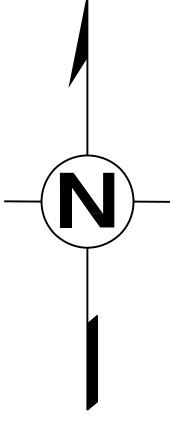


EXISTING PROFILE - CL - NORTHBOUND LANE I-55

480  
470  
460  
450  
440  
430  
420  
410  
400

446.48	449.76	451.01	453.46	455.91	458.45	461.00	463.55	466.12	468.59	470.99	473.06	474.73	476.03	477.00	477.49	477.75	477.48	476.92	475.94	474.53	472.89	471.14	469.41	467.68	465.96
355	354	353	352	351	350	349	348	347	346	345	344	343	342	341	340	339	338	337	336	335	334	333	332	331	330

REVISIONS	
DATE	BY
12/7/28	ML
REMOVED TEXT	

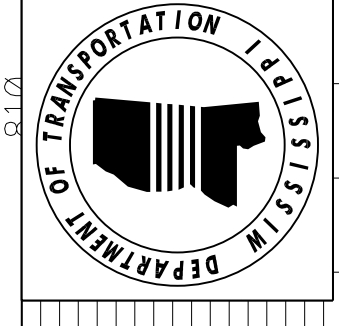
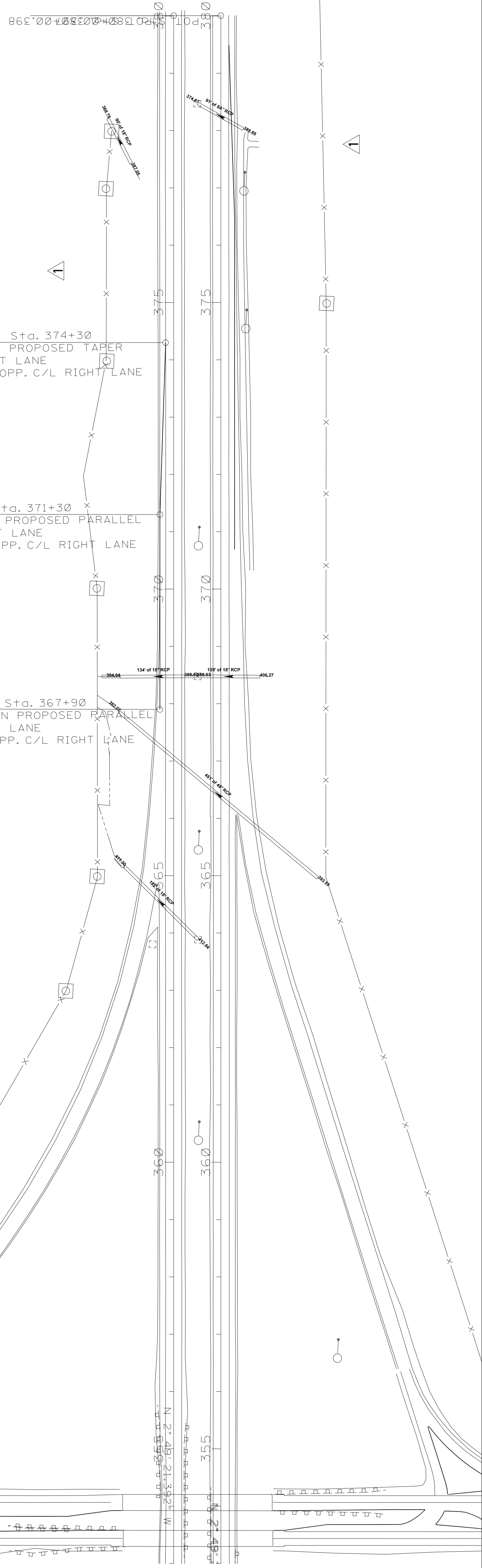


REMOVAL AND RESET OF EXISTING DELINEATORS AND MILE MARKERS REQUIRED.  
NO PAY ITEM PROVIDED. WORK TO BE INCLUDED IN OTHER BID ITEMS.

POT Sta. 374+30  
END PROPOSED TAPER  
EXIT LANE  
12' OPP. C/L RIGHT LANE

PI Sta. 371+30  
END PROPOSED PARALLEL  
EXIT LANE  
24' OPP. C/L RIGHT LANE

POT Sta. 367+90  
BEGIN PROPOSED PARALLEL  
EXIT LANE  
24' OPP. C/L RIGHT LANE



STA. 368+50 LT  
32' - 18" RCP PIPE - EXT. REQ'D  
1 - 18" FLARED END SECTION REQ'D  
1 - CONCRETE COLLAR REQ'D

EXISTING PROFILE -- CL -- NORTHBOUND LANE I-55

