

SECTION 905 -- PROPOSAL (CONTINUED)

I (We) hereby certify by digital signature and electronic submission via Bid Express of the Section 905 proposal below, that all certifications, disclosures and affidavits incorporated herein are deemed to be duly executed in the aggregate, fully enforceable and binding upon delivery of the bid proposal. I (We) further acknowledge that this certification shall not extend to the bid bond or alternate security which must be separately executed for the benefit of the Commission. This signature does not cure deficiencies in any required certifications, disclosures and/or affidavits. I (We) also acknowledge the right of the Commission to require full and final execution on any certification, disclosure or affidavit contained in the proposal at the Commission's election upon award. Failure to so execute at the Commission's request within the time allowed in the Standard Specifications for execution of all contract documents will result in forfeiture of the bid bond or alternate security.

Bidder acknowledges receipt of and has added to and made a part of the proposal and contract documents the following addendum (addenda):

ADDENDUM NO.	<u>1</u>	DATED	<u>1/11/2021</u>	ADDENDUM NO.	_____	DATED	_____
ADDENDUM NO.	<u>2</u>	DATED	<u>1/19/2021</u>	ADDENDUM NO.	_____	DATED	_____
ADDENDUM NO.	<u>3</u>	DATED	<u>1/21/2021</u>	ADDENDUM NO.	_____	DATED	_____

Number	Description
1	Revised Bid Items; Added or Revised Plan Sheet Nos. 2, 7, 9-10, 14, 16-22, 28 & 30-33; Amendment EBSx Download Required.
2	Revised Wage Rates; Amendment EBSx Download Required.
3	Revised Table of Contents; Revised NTB No. 2914; Added NTB No. 2916; Revised Bid Items; Revised Progress Schedule; Amendment EBSx Download Required.

TOTAL ADDENDA: 3
 (Must agree with total addenda issued prior to opening of bids)

Respectfully Submitted,

DATE _____

 Contractor

BY _____
 Signature

TITLE _____

ADDRESS _____

CITY, STATE, ZIP _____

PHONE _____

FAX _____

E-MAIL _____

(To be filled in if a corporation)

Our corporation is chartered under the Laws of the State of _____ and the names, titles and business addresses of the executives are as follows:

_____ President	_____ Address
_____ Secretary	_____ Address
_____ Treasurer	_____ Address

The following is my (our) itemized proposal.

IM-0055-03(094)/ 107824301000

Montgomery County(ies)

Revised 01/26/2016

**MISSISSIPPI DEPARTMENT OF TRANSPORTATION
TABLE OF CONTENTS**

PROJECT: IM-0055-03(094)/107824301 - Montgomery

Section 901 - Advertisement

Section 904 - Notice to Bidders

#1	Governing Specification
#2	Status of ROW, w/ Attachments
#3	Final Cleanup
#9	Federal Bridge Formula
#113	Tack Coat
#296	Reduced Speed Limit Signs
#445	Mississippi Agent or Qualified Nonresident Agent
#447	Traffic on Milled Surface in Rural Areas
#516	Errata and Modifications to the 2017 Standard Specifications
#757	Additional Erosion Control Requirements
#977	DUNS Requirement For Federal Funded Projects
#1225	Early Notice to Proceed
#1226	Material Storage Under Bridges
#1241	Fuel and Material Adjustments
#1434	Erosion Control Plan
#1878	Storm Water Discharge Associated with Construction Activities (≥ 1 and < 5 Acres)
#1963	Guardrail Pads
#2172	App for Storm Water Reports
#2206	MASH Compliant Devices
#2273	Mississippi Special Fuel Tax Law
#2611	Disadvantaged Business Enterprise In Federal-Aid Highway Construction, w/ Supplement
#2782	DBE Pre-Bid Meeting
#2914	Contract Time
#2915	Specialty Items
#2916	Plan Correction
#2954	Reflective Sheeting for Signs
906	Required Federal Contract Provisions -- FHWA 1273, w/Supplements

Section 907 - Special Provisions

907-102-2	Bidding Requirements and Conditions
907-107-2	Contractor's Erosion Control Plan
907-108-4	Subletting of Contract
907-109-1	Measurement and Payment
907-402-3	Open Graded Friction Course (OGFC)
907-619-5	Traffic Control for Construction Zones
907-630-1	Remove and Reset Signs
907-683-2	Renovation of Roadway Lighting System
907-701-2	Hydraulic Cement
907-702-4	Bituminous Materials

PROJECT: IM-0055-03(094)/107824301 - Montgomery

907-703-1	Gradation
907-705-1	Stone Riprap
907-707-2	Joint Material
907-711-2	Plain Steel Wire
907-720-2	Acceptance Procedure for Glass Beads
907-721-2	Materials for Signs
907-723-2	High Mast Lighting Assembly
906-8	Training Special Provisions

Section 905 - Proposal, Proposal Bid Items, Combination Bid Proposal

Certification of Performance - Prior Federal-Aid Contracts

Certification Regarding Non-Collusion, Debarment and Suspension

SAM.GOV Registration and DUNS Number

Section 902 - Contract Form

Section 903 - Contract Bond Forms

Form -- OCR-485

Progress Schedule

(REVISIONS TO THE ABOVE WILL BE INDICATED ON THE SECOND SHEET
OF SECTION 905 AS ADDENDA)

01/20/2021 08:41 AM

MISSISSIPPI DEPARTMENT OF TRANSPORTATION

SECTION 904 - NOTICE TO BIDDERS NO. 2914

CODE: (SP)

DATE: 11/05/2020

SUBJECT: Contract Time

PROJECT: IM-0055-03(094) / 107824301 – Montgomery County

The completion of work to be performed by the Contractor for this project will not be a specified date but shall be when all allowable working days are assessed, or any extension thereto as provided in Subsection 108.06. It is anticipated that the Notice of Award will be issued no later than *February 9, 2021* and the date for Notice to Proceed / Beginning of Contract Time will be *April 12, 2021*.

Should the Contractor request a Notice to Proceed earlier than *April 12, 2021* and it is agreeable with the Department for an early Notice to Proceed, the requested date will become the new Notice to Proceed date. Regardless of whether or not an early Notice to Proceed is granted, contract time will start at the original Notice to Proceed date.

All requests for an early Notice to Proceed shall be sent to the Project Engineer who will forward it to the Contract Administration Division.

252 Working Days have been allowed for the completion of work on this project.

MISSISSIPPI DEPARTMENT OF TRANSPORTATION

SECTION 904 - NOTICE TO BIDDERS NO. 2916

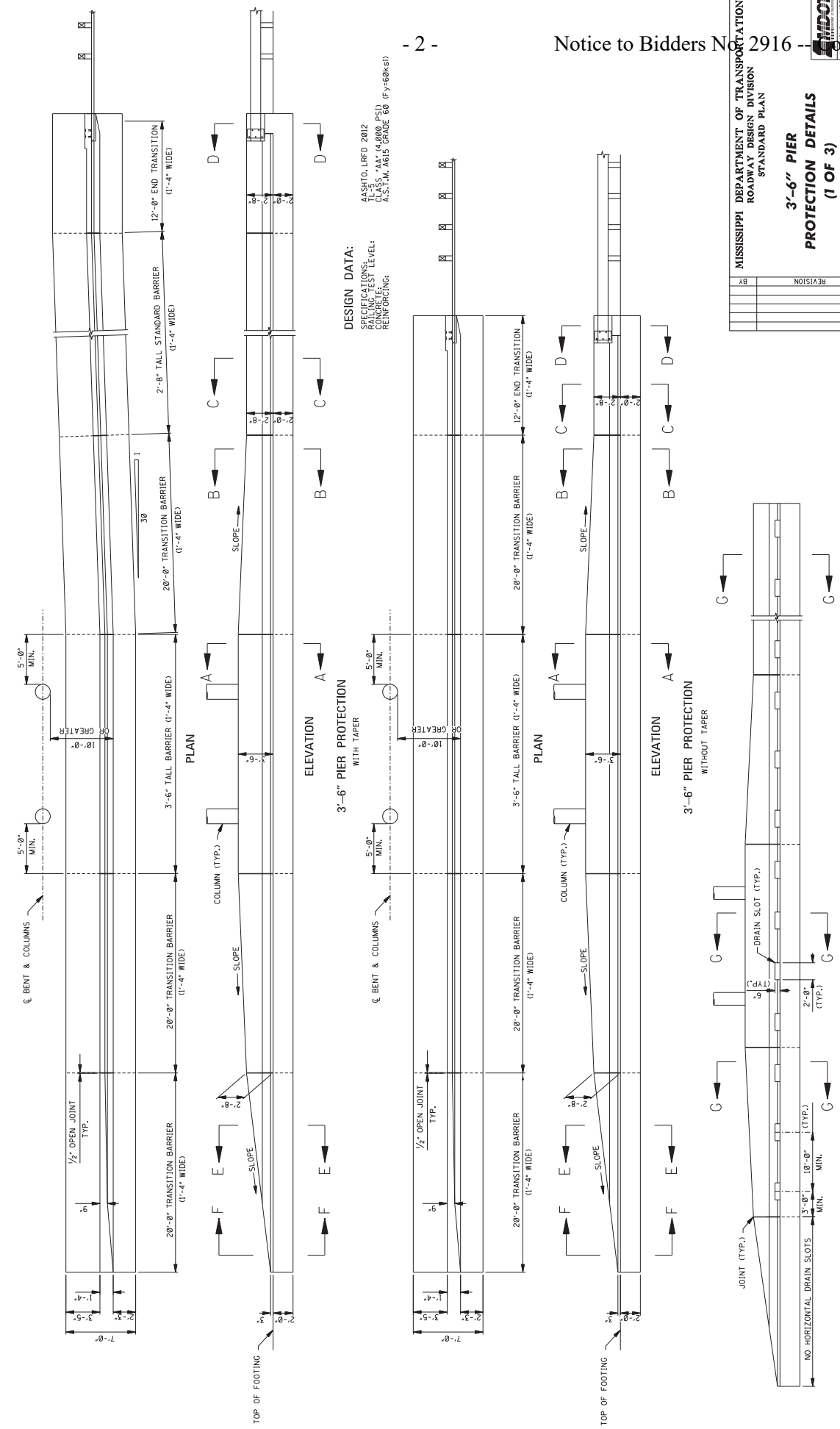
CODE: (SP)

DATE: 01/21/2021

SUBJECT: Plan Correction

PROJECT: IM-0055-03(094) / 107824301 – Montgomery County

The Bidder's attention is called to Working Number BD-1 and BD-2 (Sheet Nos. 40 – 41) in the plans. The note "See Standard Drawings (Sht. No. 6231, 6232 & 6233) For Details" is in error. The correct Standard Drawings are Sheet Nos. 6228, 6229, and 6230. The correct Standard Drawings are attached to this Notice to Bidders.



DESIGN DATA:
 AASHTO LRFD 2012
 RAILROAD CROSSING
 CLASS: "AA" (A800, P5)
 CONCRETE LEVEL:
 REINFORCING: A.S.T.M. A615 GRADE 60 (Fy=60ksi)

MISSISSIPPI DEPARTMENT OF TRANSPORTATION
 ROADWAY DESIGN DIVISION
 STANDARD PLAN

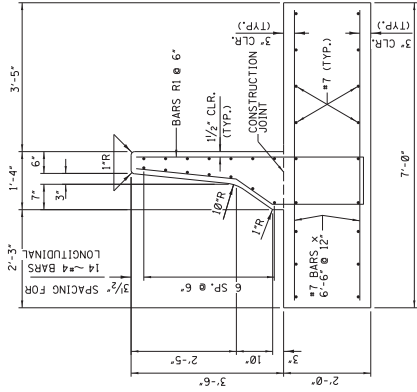
3'-6" PIER PROTECTION DETAILS (1 OF 3)

NO.	REVISION	DATE

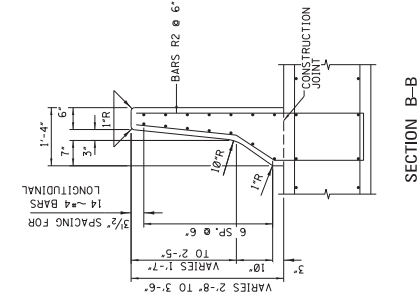
ISSUE DATE: AUGUST 01, 2017
 SHEET NUMBER: 6228



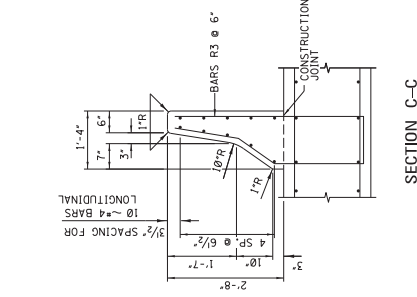
STATE PROJECT NO.
MISS.



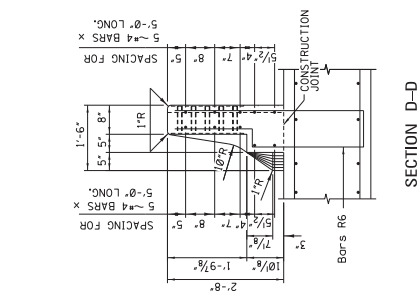
SECTION A-A



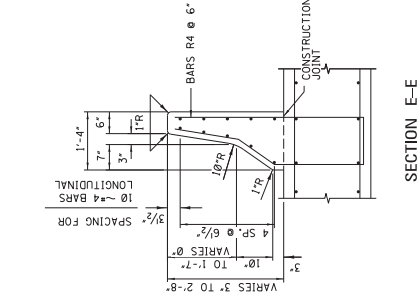
SECTION B-B



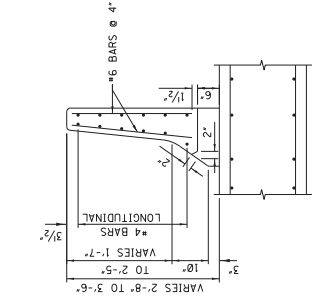
SECTION C-C



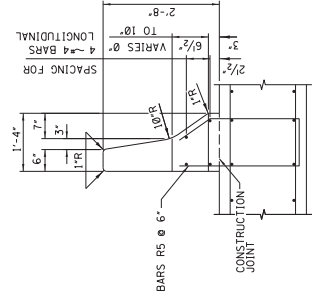
SECTION D-D



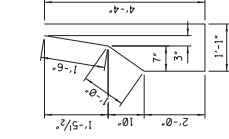
SECTION E-E



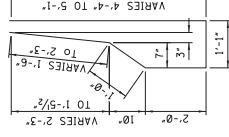
SECTION G-G



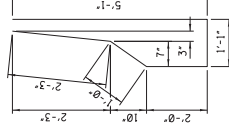
VIEW F-F



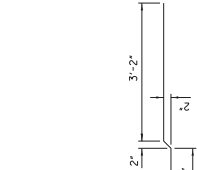
BARS R3 ~ #6



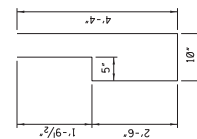
BARS R2 ~ #6



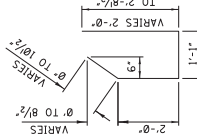
BARS R1 ~ #6



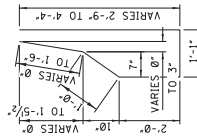
BARS L ~ #4



BARS R6 ~ #6



BARS R5 ~ #6



BARS R4 ~ #6

BAR BENDING DETAILS
DIMENSIONS ARE OUT TO OUT

MISSISSIPPI DEPARTMENT OF TRANSPORTATION ROADWAY DESIGN DIVISION STANDARD PLAN	
PROJECT NUMBER RDP-A-2	DATE 08/22/17
PIER NUMBER 01-229	ISSUE DATE AUGUST 01, 2017
REVISION	DATE

**3'-6" PIER
PROTECTION DETAILS
(2 OF 3)**

Mill & Overlay approximately 12 miles of I-55 from the Carroll County Line to 2.5 miles South of Carroll County, known as Federal Aid Project No. IM-0055-03(094) / 107824301 in Montgomery County.

Line No.	Item Code	Adj Code	Quantity	Units	Description [Fixed Unit Price]
Roadway Items					
0020	201-D002		4	Acre	Random Clearing
0030	202-B007		600	Square Yard	Removal of Asphalt Pavement, All Depths
0040	202-B045		600	Square Yard	Removal of Cement Treated Base, All Depths
0050	202-B051		990	Linear Feet	Removal of Concrete Curb
0060	202-B060		450	Linear Feet	Removal of Concrete Median Barrier
0070	202-B067		122	Square Yard	Removal of Concrete Pavement Punchouts, 8" Depth
0080	202-B150		32,540	Linear Feet	Removal of Guard Rail Including Post, Blockouts & Hardware
0090	202-B152		69	Each	Removal of Guard Rail Terminal End Section
0100	202-B177		4	Each	Removal of Low Mast Lighting Assembly
0110	202-B240		3,500	Linear Feet	Removal of Traffic Stripe
0120	202-B251		970	Linear Feet	Removal of Underground Electric Wire
0130	203-A001	(E)	4,063	Cubic Yard	Unclassified Excavation, FM, AH
0140	203-EX020	(E)	3,000	Cubic Yard	Borrow Excavation, AH, FME, Class B9
0150	203-G001	(E)	1,905	Cubic Yard	Excess Excavation, FM, AH
0160	209-A005		4,277	Square Yard	Geotextile Stabilization, Type V, Non-Woven
0170	213-C001		2	Ton	Superphosphate
0180	217-A001		1,000	Square Yard	Ditch Liner
0190	220-A001		2	Acre	Insect Pest Control [\$30.00]
0200	223-A001		8	Acre	Mowing [\$50.00]
0210	225-A001		4	Acre	Grassing
0220	225-B001		8	Ton	Agricultural Limestone
0230	225-C001		8	Ton	Mulch, Vegetative Mulch
0240	226-A001		4	Acre	Temporary Grassing
0250	234-A001		3,500	Linear Feet	Temporary Silt Fence
0260	237-A002		1,000	Linear Feet	Wattles, 20"
0270	304-B002	(GT)	14,450	Ton	Granular Material, Class 3, Group D
0280	403-A001	(BA1)	403	Ton	12.5-mm, HT, Asphalt Pavement
0290	403-A003	(BA1)	806	Ton	12.5-mm, ST, Asphalt Pavement
0300	403-A006	(BA1)	932	Ton	19-mm, ST, Asphalt Pavement
0310	403-A013	(BA1)	878	Ton	9.5-mm, HT, Asphalt Pavement
0320	403-A015	(BA1)	11,842	Ton	9.5-mm, ST, Asphalt Pavement
0330	403-S001		47	Mile	Joint Sealant

Line No.	Item Code	Adj Code	Quantity	Units	Description [Fixed Unit Price]
0340	405-A001	(BA1)	45,350	Ton	Stone Matrix Asphalt, 12.5 mm Mixture
0350	405-A002	(BA1)	34,010	Ton	Stone Matrix Asphalt, 9.5 mm Mixture
0360	406-D001		528,900	Square Yard	Fine Milling of Bituminous Pavement, All Depths
0370	407-A001	(A2)	118,700	Gallon	Asphalt for Tack Coat
0380	413-E001		450	Linear Feet	Sawing and Sealing Transverse Joints in Asphalt Pavement
0390	423-A001		47	Mile	Rumble Strips, Ground In
0400	501-A002	(C)	702	Square Yard	8" Reinforced Cement Concrete Pavement, Broom Finish
0410	501-B001	(C)	125	Square Yard	10" Plain Cement Concrete Pavement, Broom Finish
0420	501-D001		50	Linear Feet	Expansion Joints, With Dowels
0430	501-G001		265	Each	Dowels, Drilled and Installed
0440	503-C010		3,000	Linear Feet	Saw Cut, Full Depth
0450	503-E002		375	Each	Tie Bars, No. 5 Deformed Drilled and Epoxied or Grouted
0460	601-B001	(S)	5	Cubic Yard	Class "B" Structural Concrete, Minor Structures
0470	602-A001	(S)	1,500	Pounds	Reinforcing Steel
0480	603-CA011	(S)	32	Linear Feet	18" Reinforced Concrete Pipe, Class III
0490	603-CB003	(S)	1	Each	18" Reinforced Concrete End Section
0500	605-AA002	(S)	15	Square Yard	Geotextile for Subsurface Drainage, Type V
0510	605-O002	(S)	27	Linear Feet	4" Perforated Sewer Pipe for Underdrains, SDR 23.5
0520	605-P002	(S)	14	Linear Feet	4" Non-perforated Sewer Pipe for Underdrains, SDR 23.5
0530	605-W001	(GY)	1	Cubic Yard	Filter Material for Combination Storm Drain and/or Underdrains, Type A, FM
0540	606-A003		40	Each	Guard Posts
0550	606-B001		32,540	Linear Feet	Guard Rail, Class A, Type 1
0560	606-C003		63	Each	Guard Rail, Cable Anchor, Type 1
0570	606-D005		12	Each	Guard Rail, Bridge End Section, Type A
0580	606-D022		4	Each	Guard Rail, Bridge End Section, Type I
0590	606-E005		69	Each	Guard Rail, Terminal End Section, Flared
0600	609-D004	(S)	520	Linear Feet	Combination Concrete Curb and Gutter Type 2 Modified
0610	609-D007	(S)	150	Linear Feet	Combination Concrete Curb and Gutter Type 3 Modified
0620	615-A003	(S)	408	Linear Feet	Concrete Bridge End Barrier, 42"
0630	616-A001	(S)	1,155	Square Yard	Concrete Median and/or Island Pavement, 10-inch
0640	618-A001		1	Lump Sum	Maintenance of Traffic
0650	619-A1001		96	Mile	Temporary Traffic Stripe, Continuous White
0660	619-A2001		96	Mile	Temporary Traffic Stripe, Continuous Yellow

Line No.	Item Code	Adj Code	Quantity	Units	Description [Fixed Unit Price]
0670	619-A3001		96	Mile	Temporary Traffic Stripe, Skip White
0680	619-A5001		22,400	Linear Feet	Temporary Traffic Stripe, Detail
0690	619-D1001		88	Square Feet	Standard Roadside Construction Signs, Less than 10 Square Feet
0700	619-D2001		664	Square Feet	Standard Roadside Construction Signs, 10 Square Feet or More
0710	619-F1001		2,000	Linear Feet	Concrete Median Barrier, Precast
0720	619-F2001		2,000	Linear Feet	Remove and Reset Concrete Median Barrier, Precast
0730	619-G4001		36	Linear Feet	Barricades, Type III, Double Faced
0740	619-G4005		192	Linear Feet	Barricades, Type III, Single Faced
0750	619-G5001		50	Each	Free Standing Plastic Drums
0760	619-G7001		50	Each	Warning Lights, Type "B"
0770	620-A001		1	Lump Sum	Mobilization
0780	626-A001		24	Mile	6" Thermoplastic Double Drop Traffic Stripe, Skip White
0790	626-C002		24	Mile	6" Thermoplastic Double Drop Edge Stripe, Continuous White
0800	626-F001		24	Mile	6" Thermoplastic Double Drop Edge Stripe, Continuous Yellow
0810	626-G004		5,900	Linear Feet	Thermoplastic Double Drop Detail Stripe, White
0820	627-K001		2,210	Each	Red-Clear Reflective High Performance Raised Markers
0830	630-D005		45	Linear Feet	Structural Steel Beams, W12 x 26
0840	630-D009		48	Linear Feet	Structural Steel Beams, W8 x 18
0850	630-E001		140	Pounds	Structural Steel Angles & Bars, 3 1/2" x 3 1/2" x 1/4" Angles
0860	630-F006		494	Each	Delineators, Guard Rail, White
0870	630-F007		379	Each	Delineators, Guard Rail, Yellow
0880	630-F010		110	Each	Delineators, Post Mounted, Double White
0890	630-F011		52	Each	Delineators, Post Mounted, Double Yellow
0900	630-F012		30	Each	Delineators, Post Mounted, Single White
0910	630-F013		14	Each	Delineators, Post Mounted, Single Yellow
0920	682-A034		934	Linear Feet	Underground Branch Circuit, AWG 6, 3 Conductor
0930	682-B032		35	Linear Feet	Underground Branch Circuit, Jacked or Bored, AWG 6, 3 Conductor
0940	684-A003		5	Cubic Yard	Pole Foundation, 24" Diameter
0950	686-A001		4	Each	Relocation of Existing Lighting Assemblies
0960	699-A001		1	Lump Sum	Roadway Construction Stakes
0970	815-F002	(S)	25	Ton	Sediment Control Stone
0980	907-402-A002	(BA1)	18,071	Ton	Open Graded Friction Course, 9.5-mm Mixture
0990	907-402-B001	(A3)	29,089	Gallon	Bituminous Tack Coat
1000	907-619-E3001		6	Each	Changeable Message Sign

Line No.	Item Code	Adj Code	Quantity	Units	Description [Fixed Unit Price]
1010	907-630-O004		2	Each	Remove and Reset Sign, All Sizes
1020	907-683-G1002		3	Each	Renovation of High Mast Lighting Assembly, Type 130-8-S
1030	907-683-G1003		1	Each	Renovation of High Mast Lighting Assembly, Type 100-6-S
1040	907-683-G1004		1	Each	Renovation of High Mast Lighting Assembly, Type 100-4-S
1050	907-683-G1005		1	Each	Renovation of High Mast Lighting Assembly, Type 130-6-S
1060	907-683-G1006		3	Each	Renovation of High Mast Lighting Assembly, Type 130-4-S
1070	907-683-H1002		2	Each	Renovation of Low Mast Lighting Assembly, Type 40-1-10-255
1080	907-683-H1003		4	Each	Renovation of Low Mast Lighting Assembly, Type 40-1-20-255
1090	907-683-H1006		9	Each	Renovation of Low Mast Lighting Assembly, Type 40-2-10-255
1100	907-906001		720	Hours	Trainees [\$5.00]
ALTERNATE GROUP AA NUMBER 1					
1110	304-F001	(GT)	2,600	Ton	3/4" and Down Crushed Stone Base
ALTERNATE GROUP AA NUMBER 2					
1120	304-F002	(GT)	2,600	Ton	Size 610 Crushed Stone Base
ALTERNATE GROUP AA NUMBER 3					
1130	304-F003	(GT)	2,600	Ton	Size 825B Crushed Stone Base

