

SECTION 905 -- PROPOSAL (CONTINUED)

I (We) hereby certify by digital signature and electronic submission via Bid Express of the Section 905 proposal below, that all certifications, disclosures and affidavits incorporated herein are deemed to be duly executed in the aggregate, fully enforceable and binding upon delivery of the bid proposal. I (We) further acknowledge that this certification shall not extend to the bid bond or alternate security which must be separately executed for the benefit of the Commission. This signature does not cure deficiencies in any required certifications, disclosures and/or affidavits. I (We) also acknowledge the right of the Commission to require full and final execution on any certification, disclosure or affidavit contained in the proposal at the Commission's election upon award. Failure to so execute at the Commission's request within the time allowed in the Standard Specifications for execution of all contract documents will result in forfeiture of the bid bond or alternate security.

Bidder acknowledges receipt of and has added to and made a part of the proposal and contract documents the following addendum (addenda):

ADDENDUM NO. <u> 1 </u>	DATED <u> 1/20/2021 </u>	ADDENDUM NO. <u> </u>	DATED <u> </u>
ADDENDUM NO. <u> </u>	DATED <u> </u>	ADDENDUM NO. <u> </u>	DATED <u> </u>
ADDENDUM NO. <u> </u>	DATED <u> </u>	ADDENDUM NO. <u> </u>	DATED <u> </u>

Number	Description
1	Added Notice To Bidders Nos. 1963, 2927, 2928 w/attachments, and 2929; Revised Table of Contents; Revised Wage Rates; Revised Bid Items; Amendment EBSx Download Required.

TOTAL ADDENDA: 1
(Must agree with total addenda issued prior to opening of bids)

Respectfully Submitted,

DATE _____

Contractor

BY _____
Signature

TITLE _____

ADDRESS _____

CITY, STATE, ZIP _____

PHONE _____

FAX _____

E-MAIL _____

(To be filled in if a corporation)

Our corporation is chartered under the Laws of the State of _____ and the names, titles and business addresses of the executives are as follows:

_____	President	Address
_____	Secretary	Address
_____	Treasurer	Address

The following is my (our) itemized proposal.

NH-0022-04(065) 108147/301000
Union County(ies)

Revised 01/26/2016

**MISSISSIPPI DEPARTMENT OF TRANSPORTATION
TABLE OF CONTENTS**

PROJECT: NH-0022-04(065)/108147301 - Union

Section 901 - Advertisement

Section 904 - Notice to Bidders

#1	Governing Specification
#2	Status of ROW, w/ Attachments
#3	Final Cleanup
#9	Federal Bridge Formula
#13	Safety Edge
#113	Tack Coat
#296	Reduced Speed Limit Signs
#445	Mississippi Agent or Qualified Nonresident Agent
#446	Traffic on Milled Surface in Urban Areas
#516	Errata and Modifications to the 2017 Standard Specifications
#977	DUNS Requirement For Federal Funded Projects
#1225	Early Notice to Proceed
#1226	Material Storage Under Bridges
#1241	Fuel and Material Adjustments
#1963	Guardrail Pads
#2206	MASH Compliant Devices
#2273	Mississippi Special Fuel Tax Law
#2278	Smoothness Tolerances
#2611	Disadvantaged Business Enterprise In Federal-Aid Highway Construction, w/ Supplement
#2782	DBE Pre-Bid Meeting
#2924	Contract Time
#2925	Specialty items
#2926	Project Number Change
#2927	Temporary Transverse Joints
#2928	Guard Rail Replacement
#2929	Remove and Repair Chart Correction
#2954	Reflective Sheeting for Signs
906	Required Federal Contract Provisions -- FHWA 1273, w/Supplements

Section 907 - Special Provisions

907-102-2	Bidding Requirements and Conditions
907-108-4	Subletting of Contract
907-109-1	Measurement and Payment
907-619-6	Temporary Portable Rumble Strips
907-701-2	Hydraulic Cement
907-702-4	Bituminous Materials
907-703-1	Gradation
907-705-1	Stone Riprap
907-707-2	Joint Material

PROJECT: NH-0022-04(065)/108147301 - Union

907-711-2 Plain Steel Wire
907-720-2 Acceptance Procedure for Glass Beads
907-721-2 Materials for Signs

Section 905 - Proposal, Proposal Bid Items, Combination Bid Proposal
Certification of Performance - Prior Federal-Aid Contracts
Certification Regarding Non-Collusion, Debarment and Suspension
SAM.GOV Registration and DUNS Number
Section 902 - Contract Form
Section 903 - Contract Bond Forms
Form -- OCR-485

Progress Schedule

(REVISIONS TO THE ABOVE WILL BE INDICATED ON THE SECOND SHEET
OF SECTION 905 AS ADDENDA)

01/20/2021 10:22 AM

MISSISSIPPI DEPARTMENT OF TRANSPORTATION

SECTION 904 - NOTICE TO BIDDERS NO. 1963

CODE: (SP)

DATE: 9/23/2019

SUBJECT: Guardrail Pads

Bidders are hereby advised that prior to construction of the guardrail pads, the Contractor shall coordinate with the guardrail Subcontractor to determine the guardrail pad dimensions necessary to meet MASH compliance.

MISSISSIPPI DEPARTMENT OF TRANSPORTATION

SECTION 904 - NOTICE TO BIDDERS NO. 2927

CODE: (SP)

DATE: 12/1/2020

SUBJECT: Temporary Transverse Joints

PROJECT: NH-0022-04(065) / 108147301 – Union County

Bidders are hereby advised of the following transition requirements of temporary transverse joints to be placed under this project.

Roadway Type	Short Term Temporary (In place for less than 7 calendar days)	Temporary (In place for more than 7 calendar days)
Interstates & divided highways with speed limits greater than 55 MPH	Four feet (4') length for each one inch (1") of thickness	Ten feet (10') length for each one inch (1") of thickness
Other highways with speed limits less than or equal to 55 MPH	Three feet (3') length for each one inch (1") of thickness	Five feet (5') length for each one inch (1") of thickness

It is intended to place the taper as near a straight line taper as possible, but it should not vary along a straight line from the bottom to the top at any point by more than 3/16".

If the time the paper joint is in service exceeds the time threshold, the existing paper joint will be removed and the appropriate joint will be installed as directed by the Engineer.

All costs associated with placement, maintenance, and removal of temporary transverse joints will not be measured for separate payment and shall be absorbed in other items bid.

MISSISSIPPI DEPARTMENT OF TRANSPORTATION

SECTION 904 - NOTICE TO BIDDERS NO. 2928

CODE: (SP)

DATE: 01/20/2021

SUBJECT: Guard Rail Replacement

PROJECT: NH-0022-04(065) / 108147301 – Union County

Bidders are hereby advised that the Summary of Quantities sheets in the Plans do not include the following pay items:

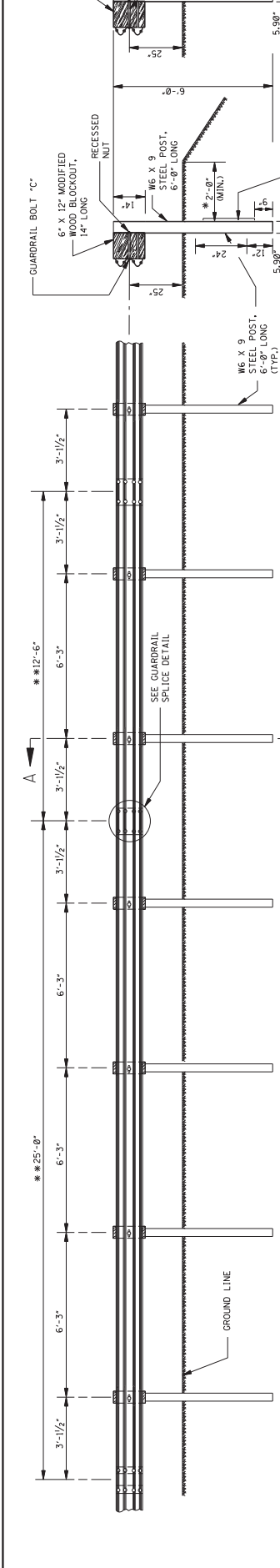
1. 202-B150, Removal of Guard Rail Including Post, Blockouts & Hardware
2. 202-B152, Removal of Guard Rail Terminal End Section
3. 606-B001, Guard Rail, Class A, Type 1
4. 606-D005, Guard Rail, Bridge End Section, Type A
5. 606-D012, Guard Rail, Bridge End Section, Type D Modified
6. 606-E005, Guard Rail, Terminal End Section, Flared.

These items are to be used to replace existing guard rail in accordance with the attached standards at the three bridges within the project limits and the guard rail at the box culvert between County Road 107 and County Road 96. The estimated quantities are shown in the table below. The quantities on the bid items are correct. Any work required to remove and replace guard rail that is not covered by pay items in the bid items including any connections or appurtenances shall be absorbed in other items bid.

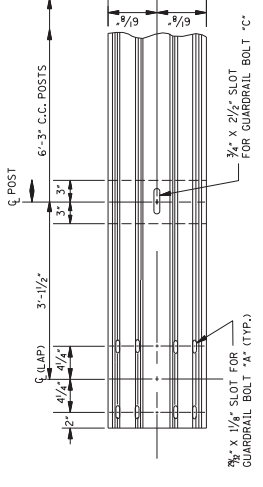
Pay Item No.	Description	Original Quantity	Revised Quantity
202-B150	Removal of Guard Rail Including Post, Blockouts & Hardware	0 LF	1,818 LF
202-B152	Removal of Guard Rail Terminal End Section	0 EA	16 EA
606-B001	Guard Rail, Class A, Type 1	0 LF	1,600 LF
606-D005	Guard Rail, Bridge End Section, Type A	0 EA	4 EA
606-D012	Guard Rail, Bridge End Section, Type D Modified	0 LF	8 EA
606-E005	Guard Rail, Terminal End Section, Flared	0 LF	16 EA

Bidders are advised that bridge ends and obstructions are to be protected from traffic at all times. It shall be the Contractor's responsibility to provide all temporary safety measures while existing

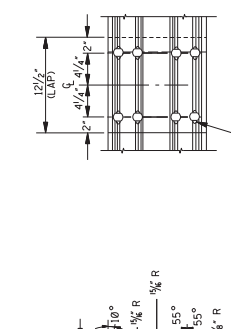
guard rail has been removed as described in Subsection 606.01. Any safety measures not included in pay items listed in the bid sheets shall be absorbed in other items bid.



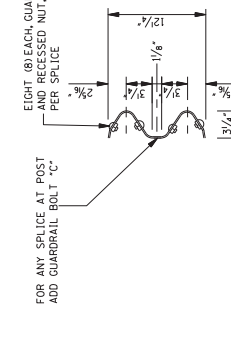
ELEVATION FROM CL ROADWAY
** NOTE: OPTIONAL BEAM LENGTHS.



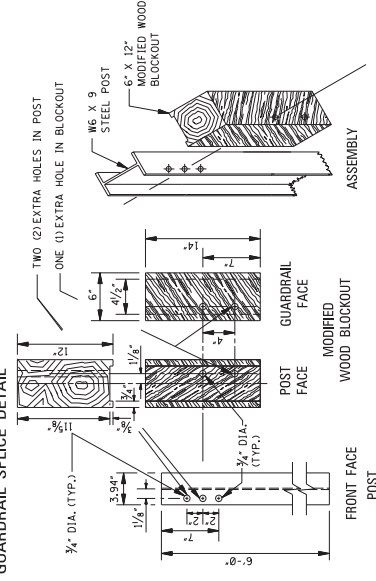
TYPICAL GUARDRAIL SECTION



ELEVATION



GUARDRAIL SPLICE DETAIL



DETAILS OF ADJUSTABLE HEIGHT BLOCKOUT ASSEMBLY

- NOTES:
- ON INITIAL INSTALLATION, THE MODIFIED WOOD BLOCKOUT SHALL BE FASTENED TO THE BOTTOM HOLE IN THE STEEL POST. AND THE MODIFIED WOOD BLOCKOUT ARE FOR FUTURE 2" HEIGHT ADJUSTMENTS WHEN THE ROADWAY IS RESURFACED.
 - AN ADDITIONAL GUARDRAIL BOLT "C" AND RECESSED NUT IS REQUIRED FOR THE SECOND HEIGHT ADJUSTMENT.
 - HOLE DETAILS ARE REQUIRED ON ALL STEEL POSTS AND MODIFIED WOOD BLOCKOUTS.
 - STEEL POSTS ARE FABRICATED FROM 6" X 9" STRUCTURAL STEEL SHAPES.
 - MODIFIED WOOD BLOCKOUTS ARE FABRICATED FROM 6" X 12" TREATED TIMBER UNLESS SPECIFIED OTHERWISE ON THE PLANS.
 - ALL HOLES IN BOTH STEEL POSTS AND MODIFIED WOOD BLOCKOUTS ARE 3/4" IN DIAMETER.

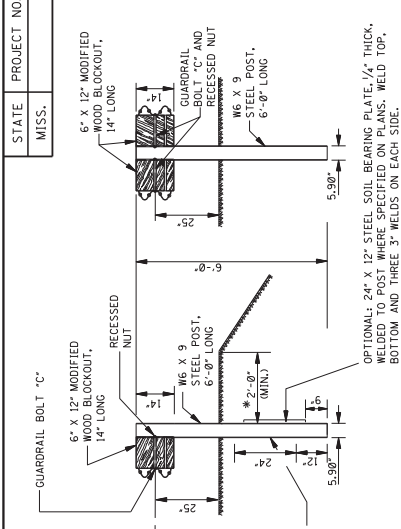
NOTES:

- ALL GUARDRAIL BOLTS ARE 3/8" - 11 UNC THREAD PITCH.
- IF ANY BOLT EXTENDS MORE THAN 1/4" FROM THE NUT, THE BOLT SHOULD BE TRIMMED BACK.

GUARDRAIL BOLTS			
BOLT	L	T	
"A"	1 1/2"	1"	4"
"B"	12"	4"	4"
"C"	14"	4"	4"

FASTENER DETAILS

HEX NUT AND BOLT "F"



SECTION A-A
DOUBLE-FACED BARRIER

** NOTE: UNLESS SPECIFIED OTHERWISE ON THE PLANS.

GENERAL NOTES:

- GUARDRAIL SHALL MEET THE REQUIREMENTS OF AASHTO M 180, CLASS A, TYPE 1 UNLESS OTHERWISE DESIGNATED.
- GUARDRAIL SHALL BE SINGLE FACED UNLESS OTHERWISE DESIGNATED.
- GUARDRAIL SECTIONS SHALL BE LAPPED IN THE DIRECTION OF TRAFFIC FLOW FOR THE LANE NEAREST THE GUARDRAIL. THE ONLY EXCEPTION NOTED IS THAT GUARDRAIL SHALL BE LAPPED FOR APPROACHING TRAFFIC ON A BRIDGE WITH 2-WAY TRAFFIC.
- STEEL POSTS SHALL CONFORM TO ASTM A36 EXCEPT ULTRASONIC TESTING. THEY SHALL BE GALVANIZED IN ACCORDANCE WITH AASHTO M 288. EXCESS CORROSION RESISTANT STEEL EQUIPPED IN WHICH THE POSTS ARE GALVANIZED SHALL BE REMOVED. GALVANIZING EXCEPT FOR HOLES TO MOUNT GUARDRAIL DELINEATORS.
- ALL MODIFIED WOOD BLOCKOUTS SHALL BE TREATED TIMBER IN ACCORDANCE WITH MISSISSIPPI DEPARTMENT OF TRANSPORTATION STANDARD SPECIFICATIONS.
- FOR OTHER DETAILS OF BOLTS, POST ACCESSORIES, FASTENERS & RAIL ELEMENTS, SEE AASHTO-ACC-ARBA JOINT TASK FORCE NO. 13, TITLED "A GUIDE TO STANDARDIZED HIGHWAY BARRIER HARDWARE," LATEST EDITION.

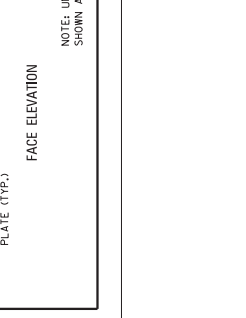
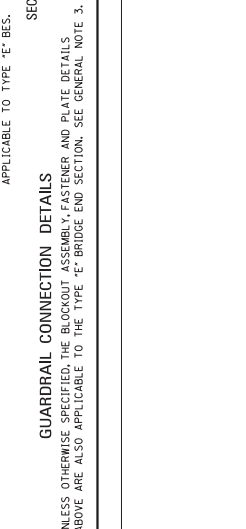
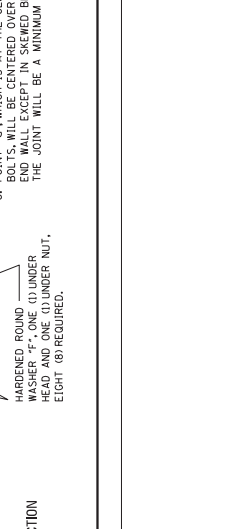
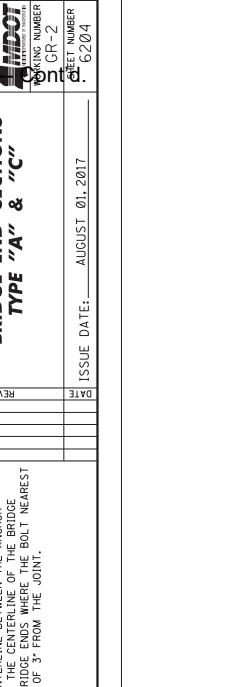
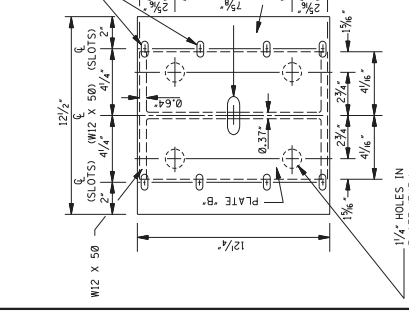
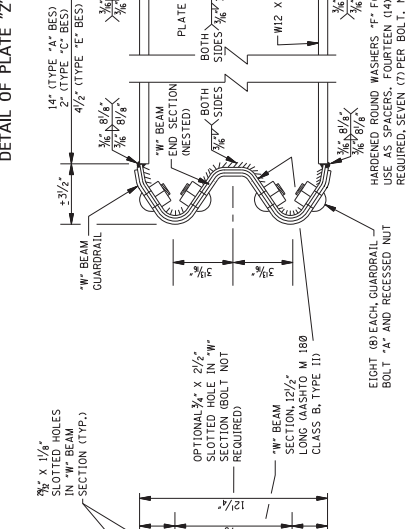
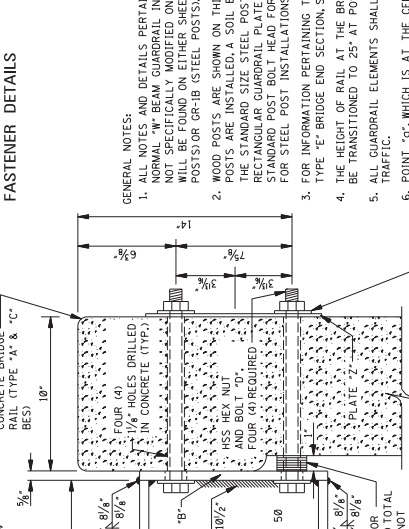
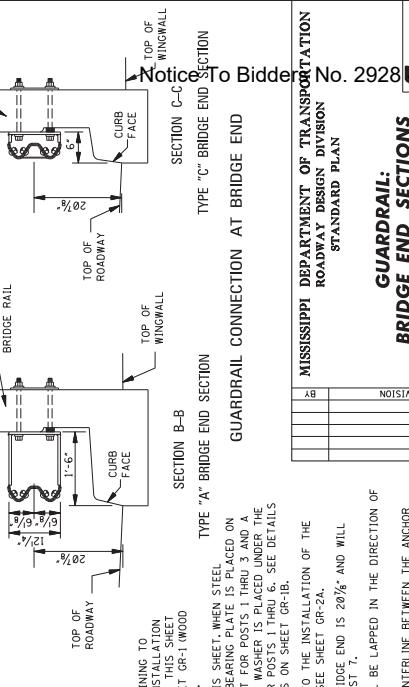
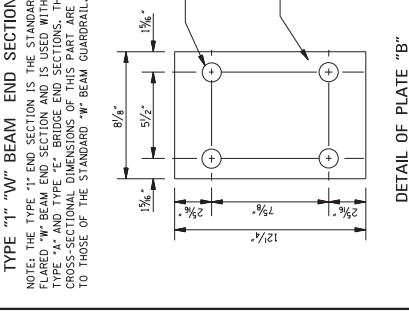
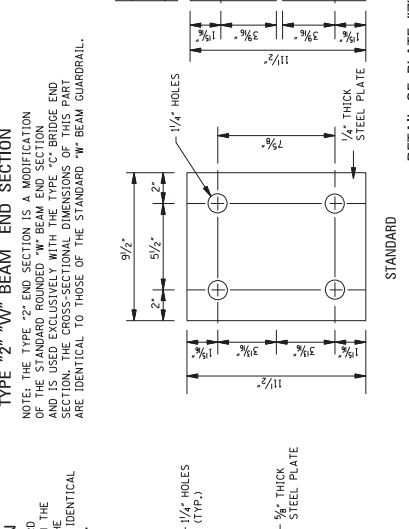
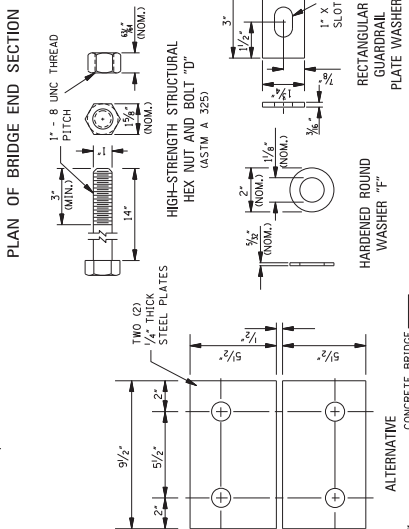
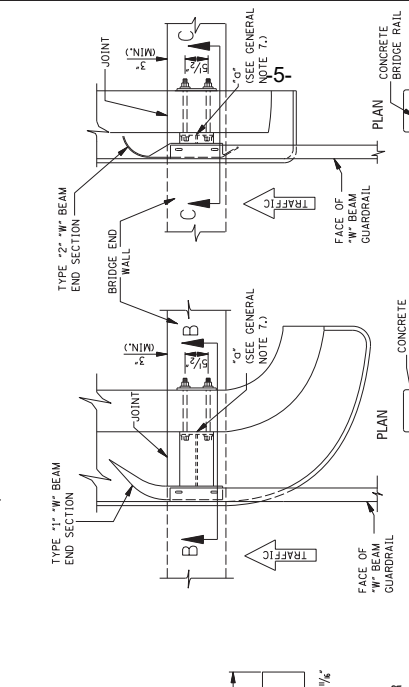
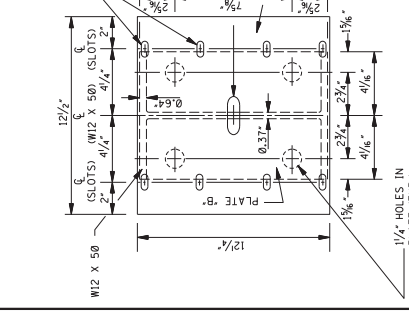
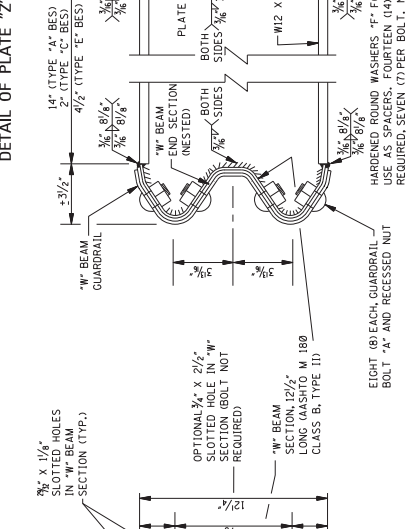
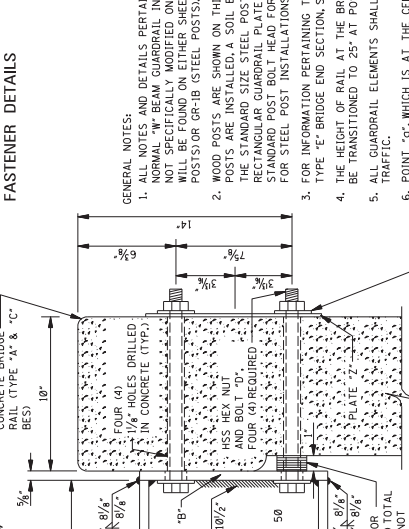
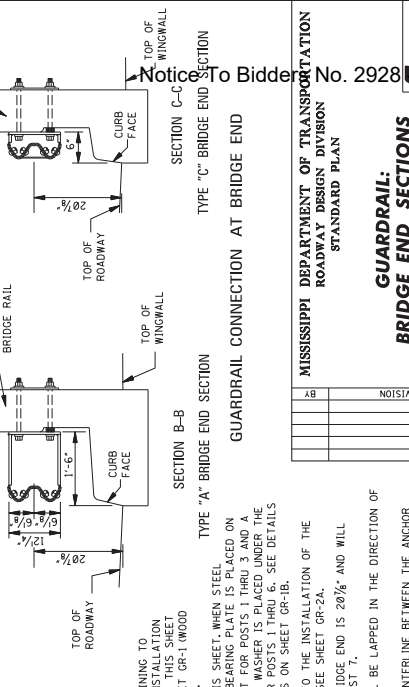
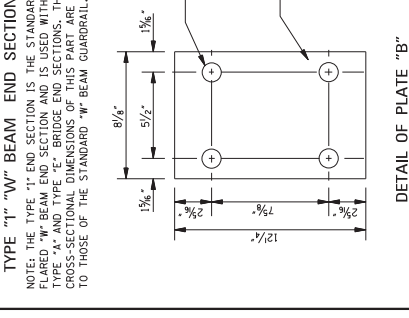
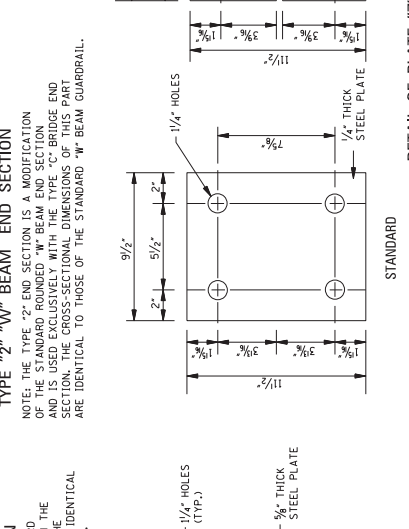
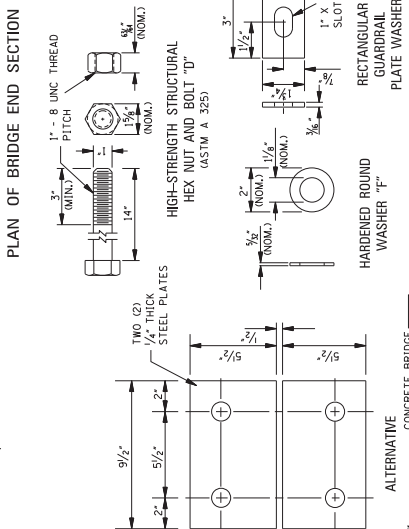
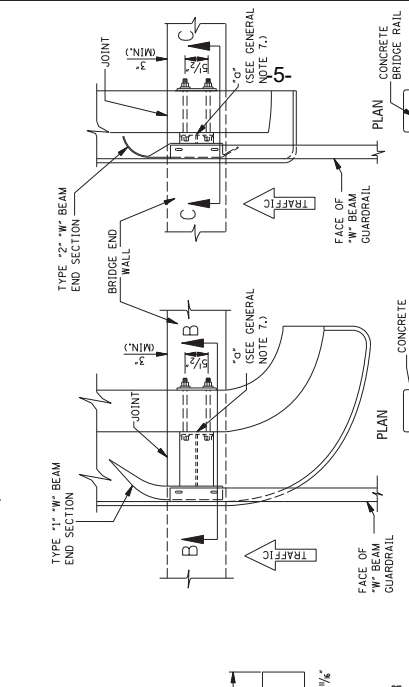
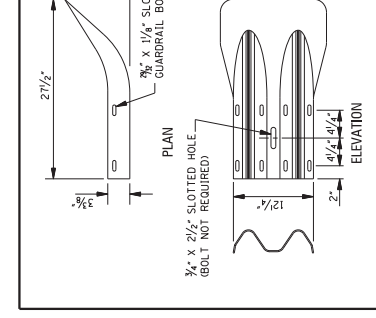
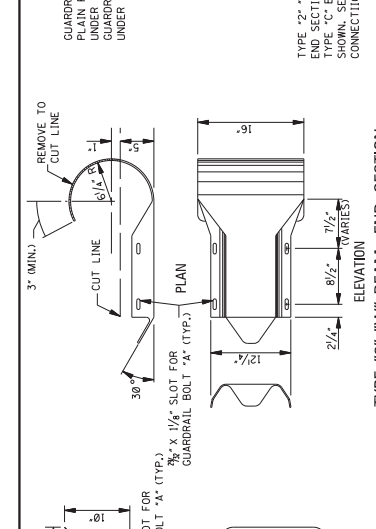
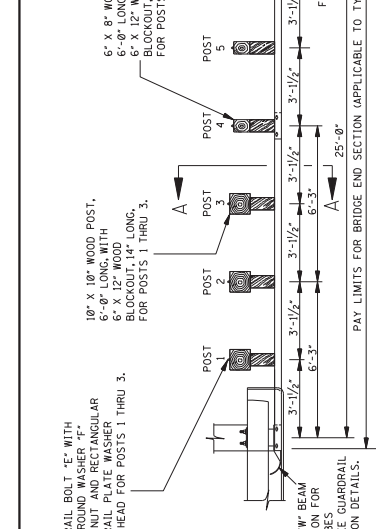
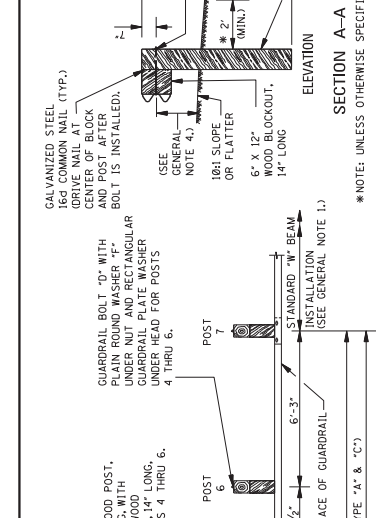
Notice To Bidder No. 2928

MISSISSIPPI DEPARTMENT OF TRANSPORTATION
ROADWAY DESIGN DIVISION
STANDARD PLAN

GUARDRAIL:
"W" BEAM
(STEEL POSTS)

ISSUE DATE: AUGUST 01, 2017
DRAWING NUMBER: CR-1B
SHEET NUMBER: 62/03

DATE	REVISION	BY



Notice To Bidder No. 2928

MISSISSIPPI DEPARTMENT OF TRANSPORTATION
ROADWAY DESIGN DIVISION
STANDARD PLAN

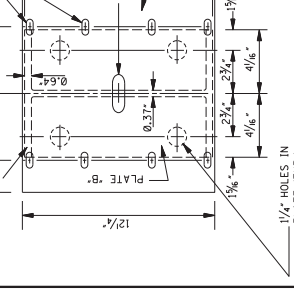
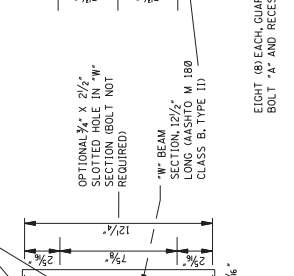
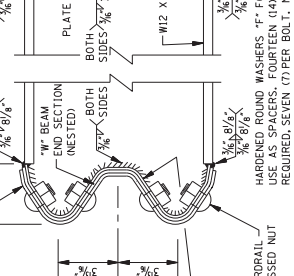
**GUARDRAIL:
BRIDGE END SECTIONS
TYPE 'A' & 'C'**

DATE	REVISION

ISSUE DATE: AUGUST 01, 2017
SHEET NUMBER 6204

GENERAL NOTES:
1. ALL NOTES AND DETAILS PERTAINING TO NORMAL 'W' BEAM GUARDRAIL INSTALLATION NOT SPECIFICALLY MODIFIED ON THIS SHEET WILL BE FOUND ON EITHER SHEET GR-1 (WOOD POSTS) OR GR-2 (STEEL POSTS).
2. WOOD POSTS ARE SHOWN ON THIS SHEET. WHEN STEEL POSTS ARE INSTALLED, A SOIL BEARING PLATE IS PLACED ON THE STANDARD SIZE STEEL POST FOR POSTS 1 THRU 3 AND A RECTANGULAR GUARDRAIL PLATE WASHER IS PLACED UNDER THE GUARDRAIL BOLT. SEE DETAILS FOR STEEL POST INSTALLATIONS ON SHEET GR-2B.
3. FOR INFORMATION PERTAINING TO THE INSTALLATION OF THE TYPE 'E' BRIDGE END SECTION, SEE SHEET GR-2A.
4. THE HEIGHT OF RAIL AT THE BRIDGE END IS 28" AND WILL BE TRANSITIONED TO 25" AT POST 1.
5. ALL GUARDRAIL ELEMENTS SHALL BE LAPPED IN THE DIRECTION OF POINT 'G', WHICH IS AT THE CENTERLINE BETWEEN THE ANCHOR BOLTS, WILL BE CENTERED OVER THE CENTERLINE OF THE BRIDGE END AND WELDED IN PLACE. THE BOLT NEAREST THE JOINT WILL BE A MINIMUM OF 3' FROM THE JOINT.

GUARDRAIL CONNECTION DETAILS
NOTE: UNLESS OTHERWISE SPECIFIED, THE BLOCKOUT ASSEMBLY, FASTENER AND PLATE DETAILS SHOWN ABOVE ARE ALSO APPLICABLE TO THE TYPE 'E' BRIDGE END SECTION. SEE GENERAL NOTE 3.



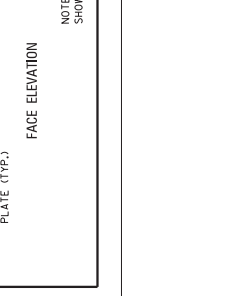
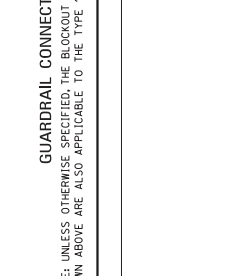
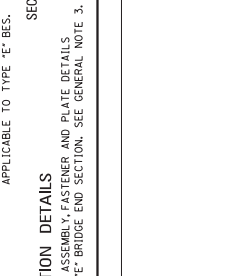
MISSISSIPPI DEPARTMENT OF TRANSPORTATION
ROADWAY DESIGN DIVISION
STANDARD PLAN

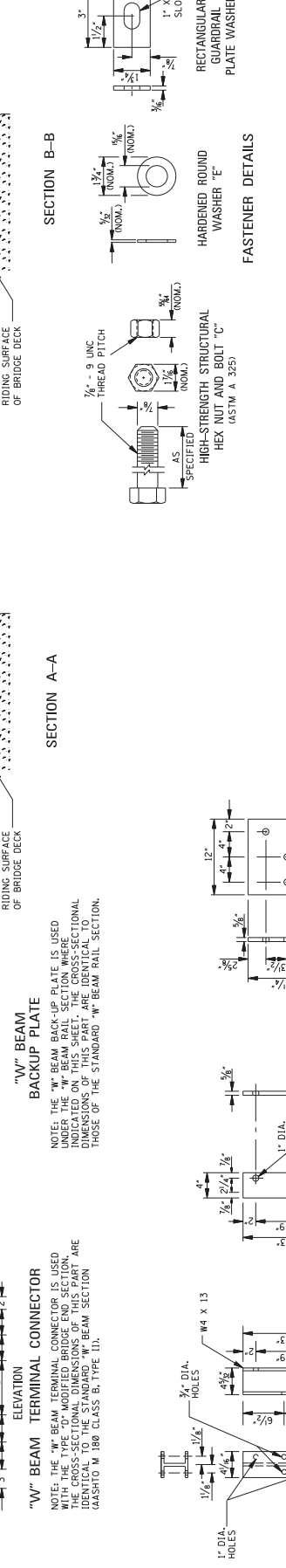
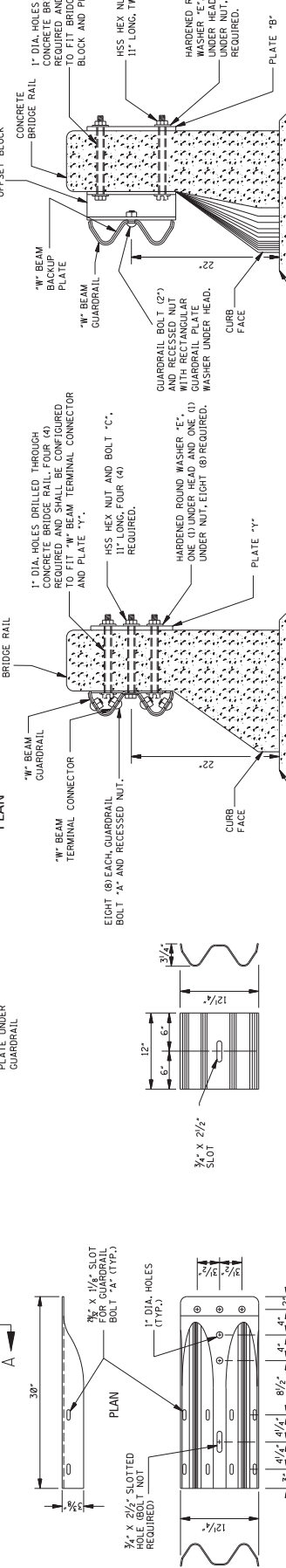
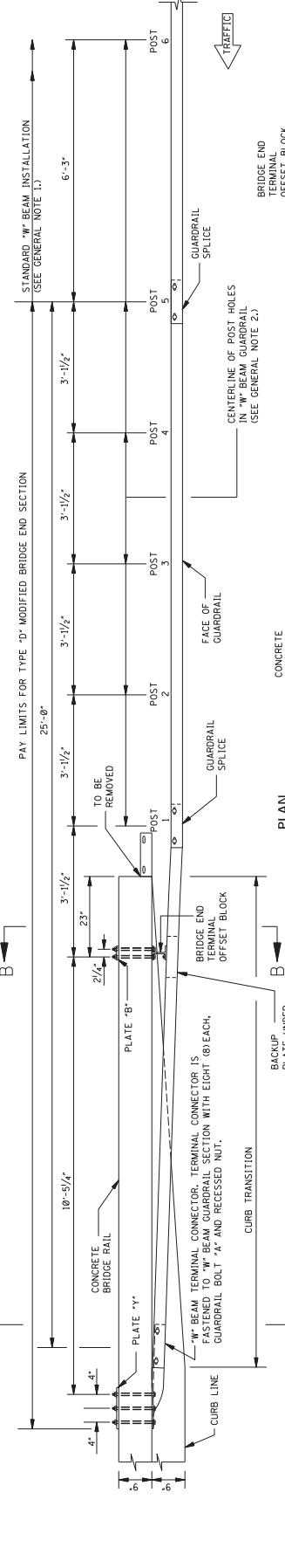
**GUARDRAIL:
BRIDGE END SECTIONS
TYPE 'A' & 'C'**

DATE	REVISION

ISSUE DATE: AUGUST 01, 2017
SHEET NUMBER 6204

GUARDRAIL CONNECTION DETAILS
NOTE: UNLESS OTHERWISE SPECIFIED, THE BLOCKOUT ASSEMBLY, FASTENER AND PLATE DETAILS SHOWN ABOVE ARE ALSO APPLICABLE TO THE TYPE 'E' BRIDGE END SECTION. SEE GENERAL NOTE 3.





GENERAL NOTES:

- ALL NOTES AND DETAILS PERTAINING TO NORMAL "W" BEAM GUARDRAIL INSTALLATION SHALL BE APPLIED TO THIS BRIDGE END SECTION UNLESS OTHERWISE NOTED. THIS BRIDGE END SECTION SHALL BE FOUND ON EITHER SHEET GR-1 (WOOD POSTS) OR GR-1B (STEEL POSTS).
- INSTALLATION DETAILS FOR BRIDGE END SECTION GUARDRAIL POSTS WILL BE FOUND ON EITHER SHEET GR-2C (WOOD POSTS) OR GR-2D (STEEL POSTS).
- GUARDRAIL ELEMENTS SHALL BE LAPPED IN THE DIRECTION OF TRAFFIC. GUARDRAIL ELEMENTS SHALL BE LAPPED IN THE DIRECTION OF TRAFFIC FOR APPROACHING TRAFFIC ON A BRIDGE WITH 2-WAY TRAFFIC.
- THE HEIGHT OF RAIL AT THE BRIDGE END IS 22" AND WILL BE TRANSITIONED TO 25" AT POST 5.

FASTENER DETAILS

SECTION A-A

SECTION B-B

DETAIL OF PLATE "B"

DETAIL OF PLATE "Y"

FRONT FACE

SIDE

DETAIL OF BRIDGE END TERMINAL OFFSET BLOCK

GUARDRAIL: BRIDGE END SECTION TYPE "D" MODIFIED

MISSISSIPPI DEPARTMENT OF TRANSPORTATION
ROADWAY DESIGN DIVISION
STANDARD PLAN

DATE	REVISION

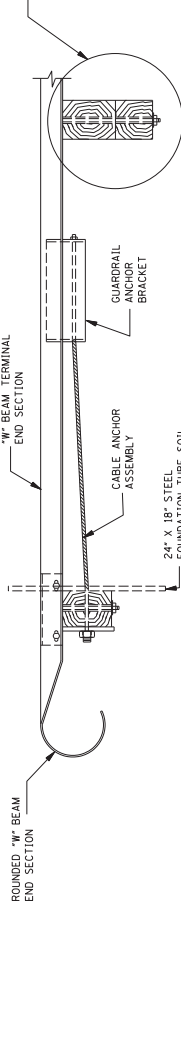
ISSUE DATE: AUGUST 01, 2017

PROJECT NUMBER: 6206



NOTE: THE POST 2 ASSEMBLY DEPENDS ON WHETHER THE TRAILING END TERMINAL IS ATTACHED TO THE STANDARD WOOD OR STEEL POST "W" BEAM GUARDRAIL INSTALLATION AS FOLLOWS:

- WOOD POST INSTALLATION (SHOWN)
WOOD TERMINAL SECTION: 6" X 12" WOOD BLOCKOUT, 14" LONG, AND 6" X 8" WOOD POST, 6'-0" LONG, ATTACHED WITH GUARDRAIL BOLT "D" AND RECESSED NUT. INSTALL RECTANGULAR GUARDRAIL PLATE WASHER UNDER HEAD AND PLAIN ROUND WASHER "F" UNDER RECESSED NUT.
- STEEL POST INSTALLATION
"W" BEAM TERMINAL RAIL SECTION: 6" X 12" MODIFIED WOOD BLOCKOUT, 14" LONG, AND W6 X 9 STEEL POST, 6'-0" LONG, ATTACHED WITH GUARDRAIL BOLT "C" AND RECESSED NUT. INSTALL RECTANGULAR GUARDRAIL PLATE WASHER UNDER GUARDRAIL BOLT HEAD.



GUARDRAIL BOLT (10") WITH RECTANGULAR GUARDRAIL PLATE WASHER UNDER HEAD AND PLAIN ROUND WASHER "F" UNDER RECESSED NUT

5/8" X 7/16" WOOD TERMINAL POST, 46 1/2" LONG

GUARDRAIL BOLT "A" AND RECESSED NUT (FP-1), FOUR (4) REQUIRED.

SEE DETAIL A

SEE DETAIL B

TS8" X 6" X 3/8" FOUNDATION TUBE, 5'-0" LONG

24" X 18" STEEL FOUNDATION TUBE SOIL PLATE 1/4" THICK

"W" BEAM TERMINAL RAIL SECTION

HEX NUT AND BOLT "F", 1/2" LONG, REQUIRED EIGHT (8) REQUIRED

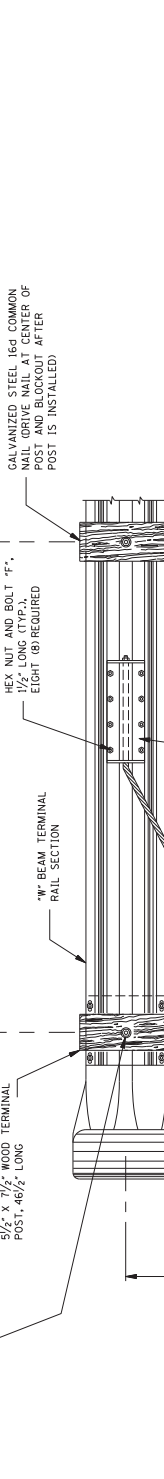
GUARDRAIL ANCHOR BRACKET

CABLE ANCHOR ASSEMBLY

6'-3" TO NEXT POST

STANDARD WOOD OR STEEL POST "W" BEAM GUARDRAIL INSTALLATION

GALVANIZED STEEL 18d COMMON NAIL (DRIVE NAIL AT CENTER OF POST BLOCKOUT) AFTER POST IS INSTALLED.



ELEVATION FROM BEHIND GUARDRAIL

NOTE: ANCHOR CABLE SHALL BE TAUT.

5/8" X 7/16" WOOD TERMINAL POST, 46 1/2" LONG

8" X 8" STEEL BEARING PLATE, 3/8" THICK

POST SLEEVE

CABLE ANCHOR ASSEMBLY

HEX NUT AND BOLT "F", 1/2" LONG, WITH PLAIN ROUND WASHER "F" UNDER HEAD AND NUT

TS8" X 6" X 3/8" FOUNDATION TUBE, 5'-0" LONG

24" X 18" STEEL FOUNDATION TUBE SOIL PLATE 1/4" THICK

"W" BEAM TERMINAL RAIL SECTION

HEX NUT AND BOLT "F", 1/2" LONG, WITH PLAIN ROUND WASHER "F" UNDER HEAD AND NUT

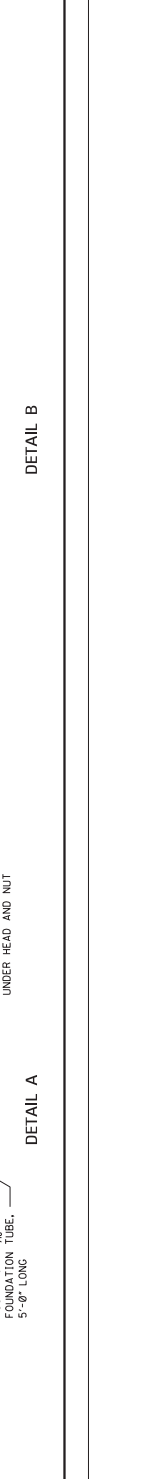
TS8" X 6" X 3/8" FOUNDATION TUBE, 5'-0" LONG



ROUNDED "W" BEAM END SECTION

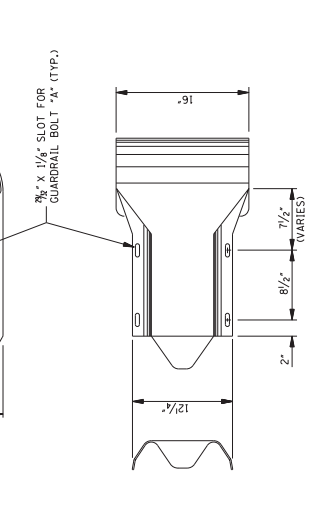
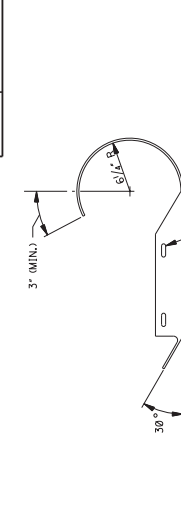
NOTE: THE CROSS-SECTIONAL DIMENSIONS FOR THIS PART ARE TO FIT OVER THE STANDARD "W" BEAM SECTION.

- GENERAL NOTES:
- THIS ANCHORAGE MAY ONLY BE USED ON THE TRAILING END OF A BARRIER WHICH IS NOT EXPOSED TO VEHICULAR IMPACT.
 - GUARDRAIL SHALL MEET THE REQUIREMENTS OF ASHTO M 188, CLASS A, TYPE 1 UNLESS OTHERWISE DESIGNATED.
 - ALL WOOD POSTS AND BLOCKOUTS SHALL BE TREATED TIMBER IN ACCORDANCE WITH MISSISSIPPI DEPARTMENT OF TRANSPORTATION STANDARD SPECIFICATIONS.
 - FOR DETAILS OF HARDWARE AND COMPONENTS NOT FOUND ON THIS SHEET, SEE SHEET GR-10K.
 - DETAILS PERTINENT TO THE STANDARD INSTALLATION OF "W" BEAM SECTIONS WILL BE FOUND ON SHEET GR-1, FOR WOOD POSTS, AND GR-1B, FOR STEEL POSTS.
 - FOR OTHER DETAILS OF POSTS, POST ACCESSORIES, FASTENERS, AND RAIL ELEMENTS, SEE ASHTO-ACC-ARTBA JOINT TASK FORCE NO. 13, TITLED "A GUIDE TO STANDARDIZED HIGHWAY BARRIER HARDWARE," LATEST EDITION.



DETAIL A

DETAIL B



ROUNDED "W" BEAM END SECTION
NOTE: THE CROSS-SECTIONAL DIMENSIONS FOR THIS PART ARE TO FIT OVER THE STANDARD "W" BEAM SECTION.

- GENERAL NOTES:
1. THIS ANCHORAGE MAY ONLY BE USED ON THE TRAILING END OF A BARRIER WHICH IS NOT EXPOSED TO VEHICULAR IMPACT.
 2. GUARDRAIL SHALL MEET THE REQUIREMENTS OF AASHTO M 180, CLASS A, TYPE 1 UNLESS OTHERWISE DESIGNATED.
 3. ALL WOOD POSTS AND BLOCKOUTS SHALL BE TREATED TIMBER IN ACCORDANCE WITH MISSISSIPPI DEPARTMENT OF TRANSPORTATION STANDARD SPECIFICATIONS.
 4. CONCRETE FOR THE CONCRETE FOUNDATION MAY BE EITHER CLASS "B" STRUCTURAL CONCRETE OR AN APPROVED COMMERCIAL PRE-MIXED BAG CONCRETE. THE WELDED WIRE FABRIC FOR THE CONCRETE FOUNDATION SHALL CONFORM TO AASHTO M 221/M 221M AND AASHTO M 58M/M 55.
 5. FOR DETAILS OF HARDWARE AND COMPONENTS NOT FOUND ON THIS SHEET, SEE SHEET CR-HW.
 6. DETAILS PERTINENT TO THE STANDARD INSTALLATION OF "W" BEAM GUARDRAIL SHALL BE FOUND ON SHEET CR-1, FOR WOOD POSTS, AND CR-1B, FOR STEEL POSTS.
 7. FOR OTHER DETAILS OF POSTS, POST ACCESSORIES, FASTENERS AND RAIL ELEMENTS, SEE AASHTO-AGC-ARTBA JOINT TASK FOND. 13, TITLED "A GUIDE TO STANDARDIZED HIGHWAY BARRIER HARDWARE," LATEST EDITION.

Notice to Contractor No. 2928

MISSISSIPPI DEPARTMENT OF TRANSPORTATION
ROADWAY DESIGN DIVISION
STANDARD PLAN

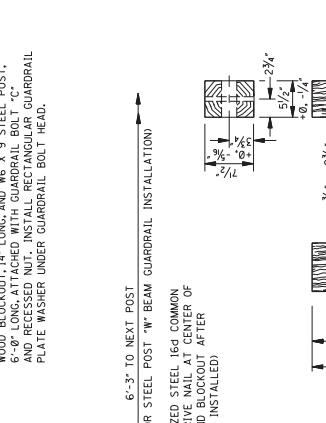
**GUARDRAIL:
TYPE 1 CABLE ANCHORAGE
(CONCRETE FOOTING)**

DATE	REVISION

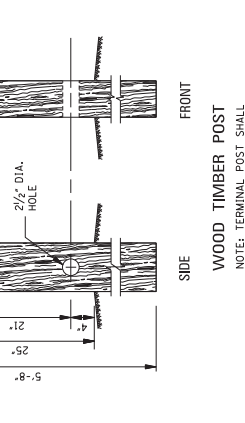
ISSUE DATE: AUGUST 01, 2017
SHEET NUMBER 6213

NOTE: THE "POST" IS ATTACHED TO WHETHER THE TRAILING END TERMINAL IS CONNECTED TO THE STANDARD WOOD OR STEEL POST "W" BEAM GUARDRAIL INSTALLATION AS FOLLOWS:

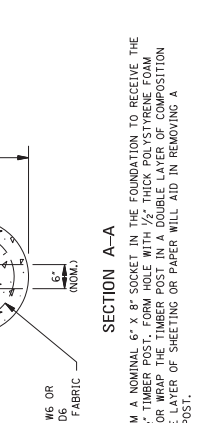
1. WOOD POST INSTALLATION (SHOW)
 - "W" BEAM TERMINAL RAIL SECTION, 6' X 12" WOOD BLOCKOUT, 14'-0" LONG, AND 6' X 8" WOOD POST, 6'-0" LONG, ATTACHED WITH GUARDRAIL BOLT "D" AND RECESSED NUT. INSTALL RECTANGULAR GUARDRAIL PLATE WASHER UNDER HEAD AND PLAIN ROUND WASHER "F" UNDER RECESSED NUT.
2. STEEL POST INSTALLATION
 - "W" BEAM TERMINAL RAIL SECTION, 6' X 12" MODIFIED WOOD BLOCKOUT, 14' LONG, AND W6 X 9 STEEL POST, 6'-0" LONG, ATTACHED WITH GUARDRAIL BOLT "C" AND RECESSED NUT. INSTALL RECTANGULAR GUARDRAIL PLATE WASHER UNDER GUARDRAIL BOLT HEAD.



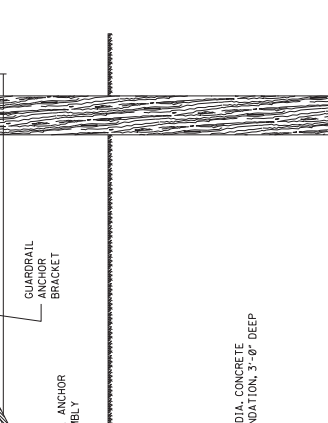
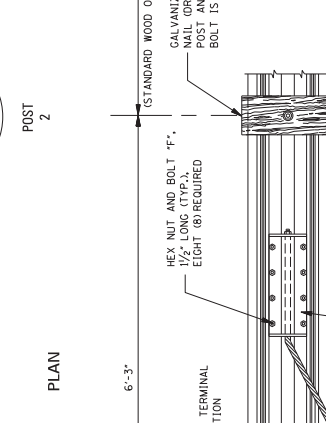
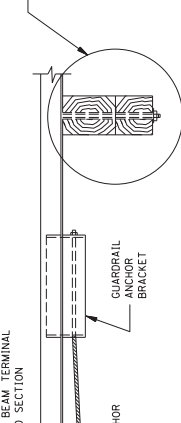
6'-3" TO NEXT POST
STANDARD WOOD OR STEEL POST "W" BEAM GUARDRAIL INSTALLATION



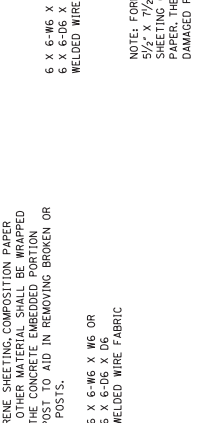
WOOD TIMBER POST
NOTE: TERMINAL POST SHALL BE MADE OF S4S TIMBER WITH STRESS GRADE OF 1200 lb/in².



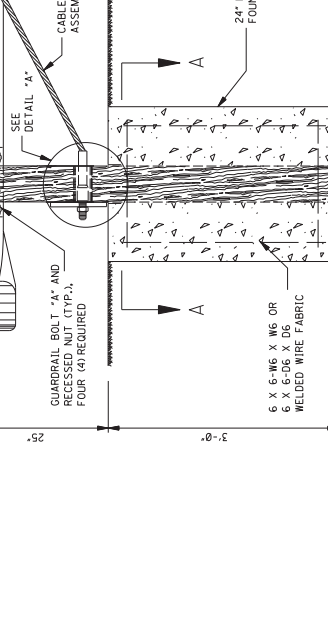
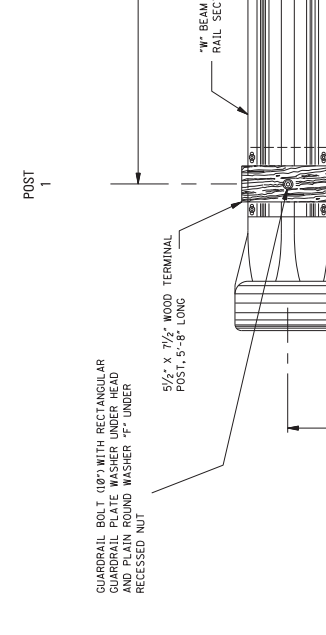
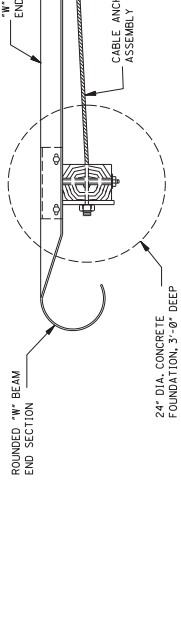
SECTION A-A
NOTE: FORM A NOMINAL 6' X 8' SOCKET IN THE FOUNDATION TO RECEIVE THE 5/2" X 7/2" TIMBER POST. FORM HOLE WITH 1/2" THICK POLYSTYRENE FOAM SHEETING OR WRAP THE TIMBER POST IN A DOUBLE LAYER OF COMPOSITION PAPER. THE LAYER OF SHEETING OR PAPER WILL AID IN REMOVING A DAMAGED POST.



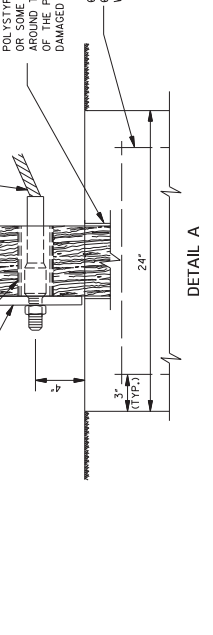
ELEVATION FROM BEHIND GUARDRAIL
NOTE: ANCHOR CABLE SHALL BE TAUT.



DETAIL A



ELEVATION FROM BEHIND GUARDRAIL
NOTE: ANCHOR CABLE SHALL BE TAUT.

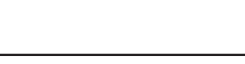


DETAIL A

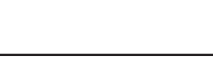
NOTE: THE "POST" IS ATTACHED TO WHETHER THE TRAILING END TERMINAL IS CONNECTED TO THE STANDARD WOOD OR STEEL POST "W" BEAM GUARDRAIL INSTALLATION AS FOLLOWS:

1. WOOD POST INSTALLATION (SHOW)
 - "W" BEAM TERMINAL RAIL SECTION, 6' X 12" WOOD BLOCKOUT, 14'-0" LONG, AND 6' X 8" WOOD POST, 6'-0" LONG, ATTACHED WITH GUARDRAIL BOLT "D" AND RECESSED NUT. INSTALL RECTANGULAR GUARDRAIL PLATE WASHER UNDER HEAD AND PLAIN ROUND WASHER "F" UNDER RECESSED NUT.
2. STEEL POST INSTALLATION
 - "W" BEAM TERMINAL RAIL SECTION, 6' X 12" MODIFIED WOOD BLOCKOUT, 14' LONG, AND W6 X 9 STEEL POST, 6'-0" LONG, ATTACHED WITH GUARDRAIL BOLT "C" AND RECESSED NUT. INSTALL RECTANGULAR GUARDRAIL PLATE WASHER UNDER GUARDRAIL BOLT HEAD.

6'-3" TO NEXT POST
STANDARD WOOD OR STEEL POST "W" BEAM GUARDRAIL INSTALLATION



WOOD TIMBER POST
NOTE: TERMINAL POST SHALL BE MADE OF S4S TIMBER WITH STRESS GRADE OF 1200 lb/in².



SECTION A-A
NOTE: FORM A NOMINAL 6' X 8' SOCKET IN THE FOUNDATION TO RECEIVE THE 5/2" X 7/2" TIMBER POST. FORM HOLE WITH 1/2" THICK POLYSTYRENE FOAM SHEETING OR WRAP THE TIMBER POST IN A DOUBLE LAYER OF COMPOSITION PAPER. THE LAYER OF SHEETING OR PAPER WILL AID IN REMOVING A DAMAGED POST.

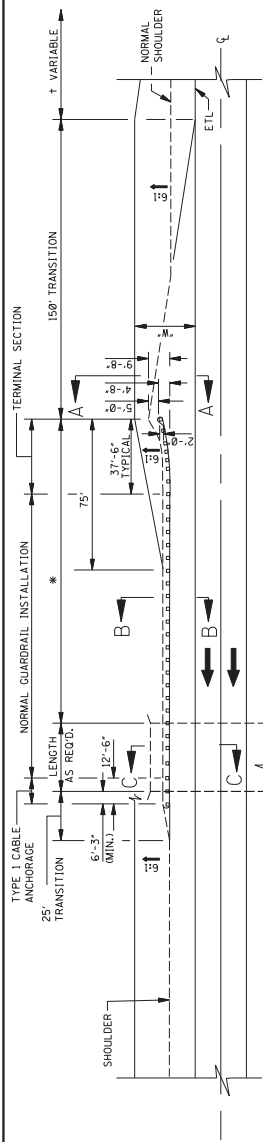


ELEVATION FROM BEHIND GUARDRAIL
NOTE: ANCHOR CABLE SHALL BE TAUT.

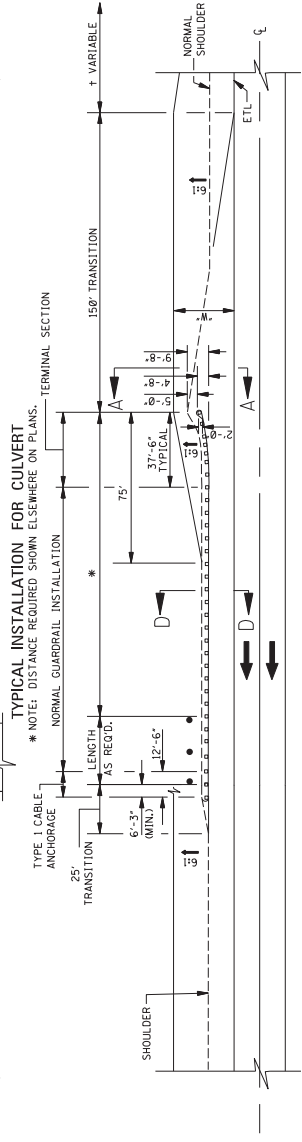


DETAIL A

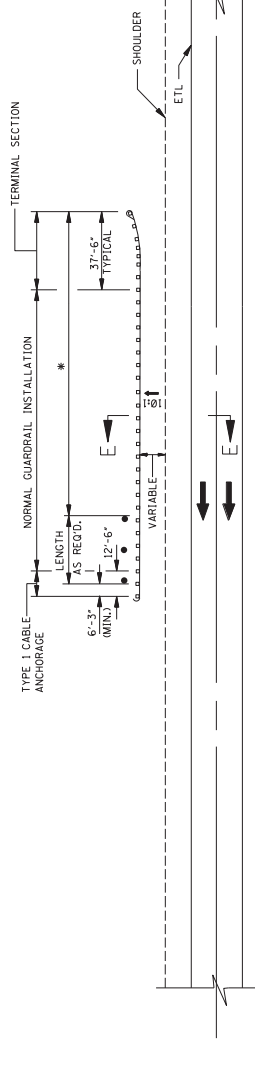
† NOTE: IF FORESLOPE SHOWN ELSEWHERE ON PLANS, IS OTHER THAN 6:1, TRANSITION WILL OCCUR IN AREA SHOWN.



TYPICAL INSTALLATION FOR CULVERT
* NOTE: DISTANCE REQUIRED SHOWN ELSEWHERE ON PLANS.

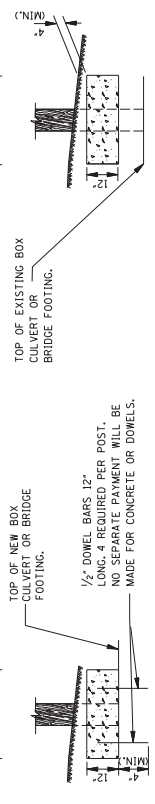


TYPICAL INSTALLATION FOR ROADSIDE OBSTACLE ON SIDE SLOPE STEEPER THAN 10:1
* NOTE: DISTANCE REQUIRED SHOWN ELSEWHERE ON PLANS.

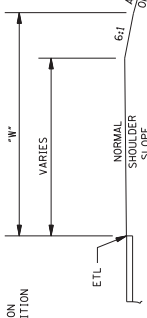


TYPICAL INSTALLATION FOR ROADSIDE OBSTACLE ON SIDE SLOPE 10:1 OR FLATTER
* NOTE: DISTANCE REQUIRED SHOWN ELSEWHERE ON PLANS.

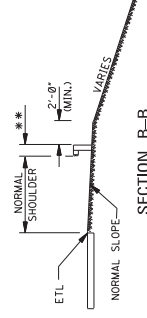
THE POST SHALL BE WRAPPED WITH ONE LAYER OF 1/4" THICK EXPANDED POLYSTYRENE FOAM SHEETING AND ONE WRAP OF LIGHTWEIGHT BUILDING PAPER. THE TOP 1" SHALL BE FILLED WITH BUTYL RUBBER CAULKING (COMMERCIAL GRADE) OR OTHER APPROVED WATERPROOFING MATERIAL.



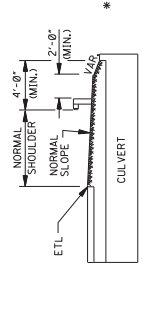
DETAIL OF POST INSTALLATION WITH COVER LESS THAN NORMAL POST LENGTH



SECTION A-A

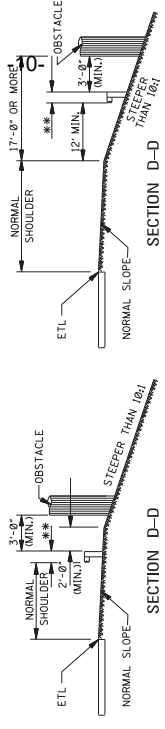


SECTION B-B



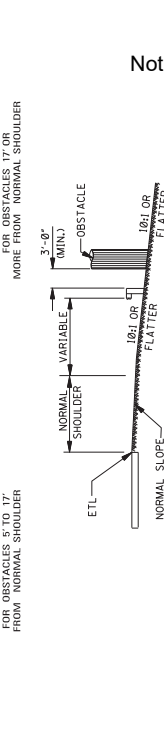
SECTION C-C

*** NOTE: FOR STEEL POST AND RAIL, SEE ROAD POST, 20.78' FOR ROAD POST AND BLOKOUT, 23.25'.



SECTION D-D

FOR OBSTACLES 17' OR MORE FROM NORMAL SHOULDER



SECTION D-D

FOR OBSTACLES 17' OR MORE FROM NORMAL SHOULDER



SECTION E-E

GENERAL NOTES:

- FOR DETAILS PERTINENT TO INSTALLATION OF THE TERMINAL SECTION, SEE MANUFACTURER'S SPECIFICATIONS AND DRAWINGS OR ELSEWHERE ON PLANS.
- GUARDRAIL SECTIONS TO BE LAPPED IN THE DIRECTION OF TRAFFIC FLOW NEAREST THE GUARDRAIL FACE.
- PAY LIMITS FOR NORMAL GUARDRAIL INSTALLATION SHALL BE THE TOTAL LENGTH LESS THE LENGTHS OF END TERMINALS.
- W = SHOULDER WIDTH + FORESLOPE WIDTH. DIMENSIONS FOUND ELSEWHERE ON THE PLANS.

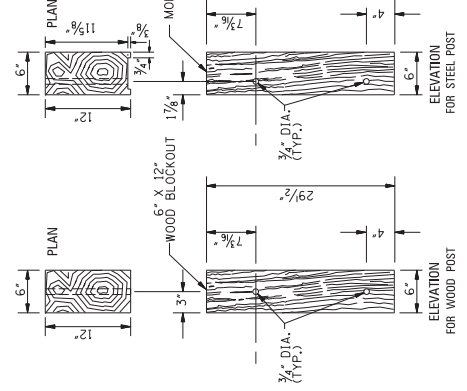
NO.	REVISION	DATE

MISSISSIPPI DEPARTMENT OF TRANSPORTATION
ROADWAY DESIGN DIVISION
STANDARD PLAN

**GUARDRAIL:
TYPICAL INSTALLATION
FOR ROADSIDE HAZARDS
ON DIVIDED HIGHWAYS**

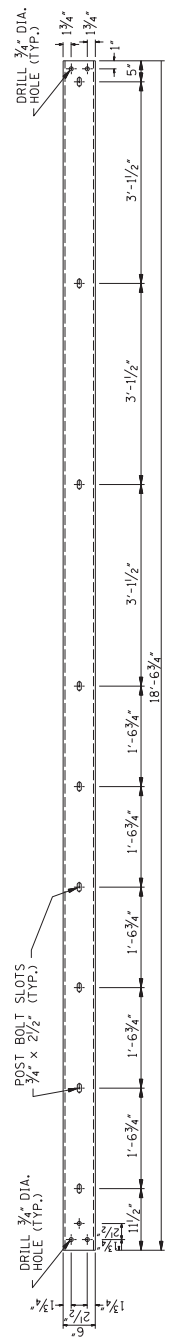
ISSUE DATE: AUGUST 01, 2017

PROJECT NUMBER: 2017-01-01
SHEET NUMBER: 6216

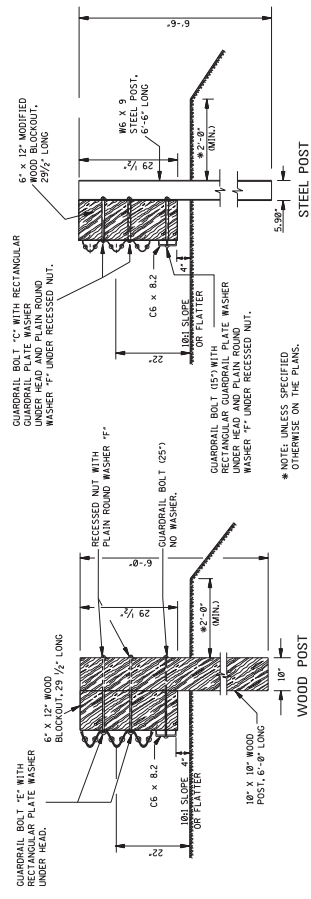


BLOCKOUT FOR POST 9 OF
TYPE "I" BRIDGE END SECTION

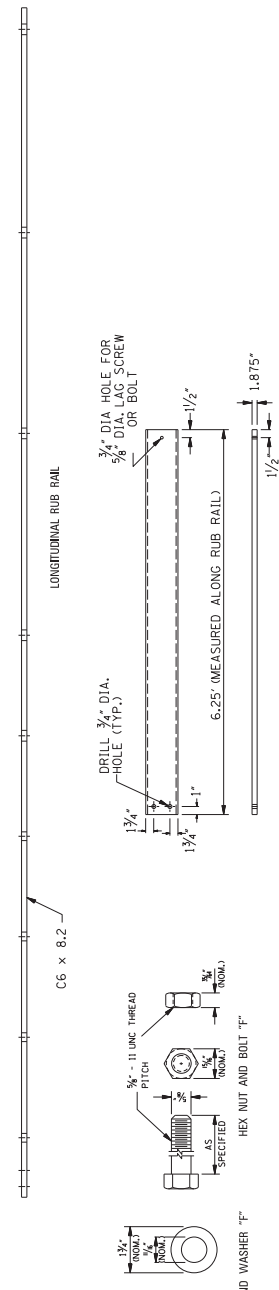
CROSS-SECTION
VIEW OF C6 X 8.2



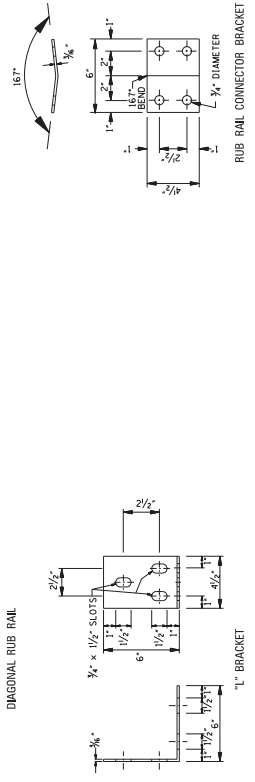
PROFILE VIEW OF POSTS



LONGITUDINAL RUB RAIL



DIAGONAL RUB RAIL



GENERAL NOTES:

- POSTS 1 THROUGH 9 REQUIRE AN ADDITIONAL HOLE TO ATTACH LOWER BLOCKOUTS. STEEL POST REQUIRE 2 HOLES ON EITHER SIDE OF THE POST.
- RUBRAIL BLOCKOUTS SHALL BE SECURED WITH 3/4" BOTTOMHEAD BOLT FOR STEEL POST AND 20" BOLT FOR WOOD POST. (SEE PROFILE VIEW FOR LENGTHS)
- RUBRAIL & LONG BLOCKOUT (POST 9) ARE NOT REQUIRED IN CURB & GUTTER SECTIONS OF ROADWAY.
- ATTACH RUBRAIL CONNECTOR PLATE AND RUBRAIL WITH 3/8" X 1/2" HEX HEAD BOLTS 4"

MISSISSIPPI DEPARTMENT OF TRANSPORTATION
ROADWAY DESIGN DIVISION
STANDARD PLAN

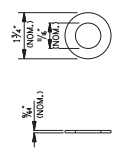
**GUARDRAIL:
RUB RAIL HARDWARE**

DATE	REVISION

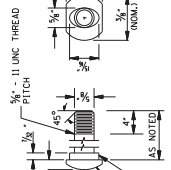
ISSUE DATE: AUGUST 01, 2017



25" OR 15" GUARDRAIL BOLT



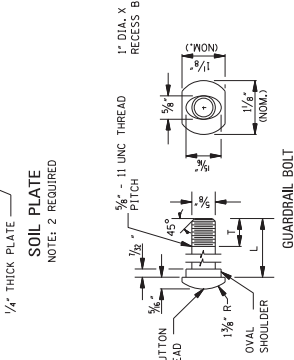
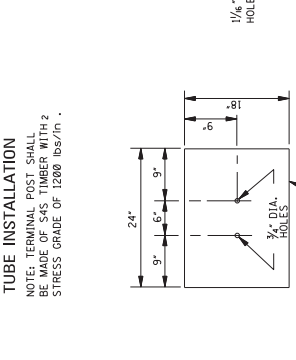
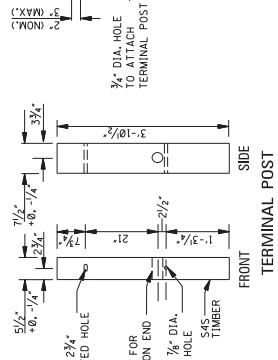
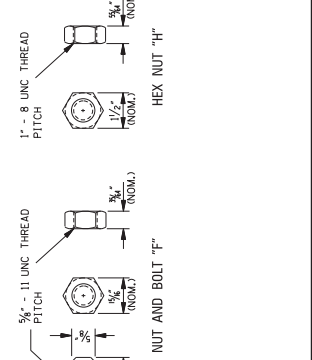
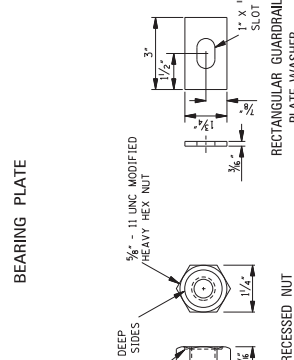
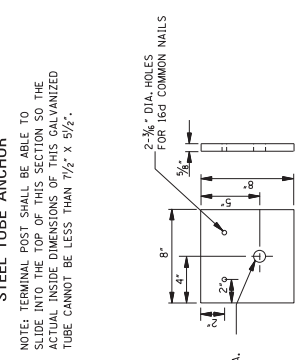
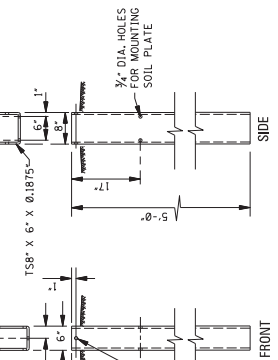
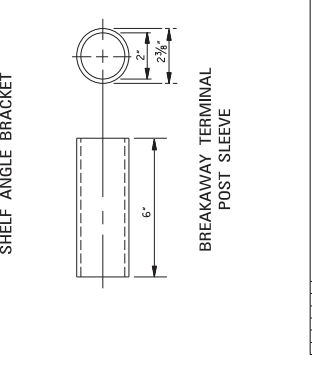
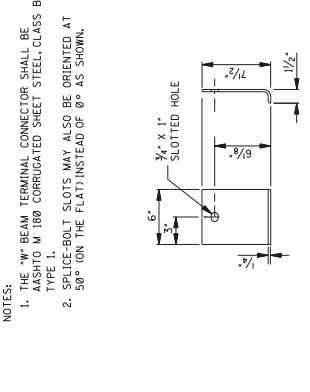
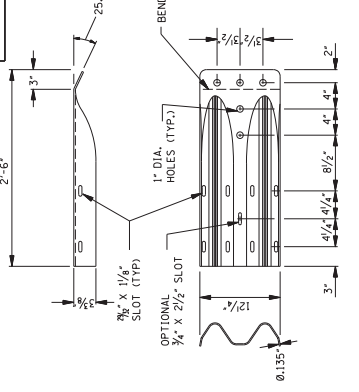
PLAN ROUND WASHER "F"



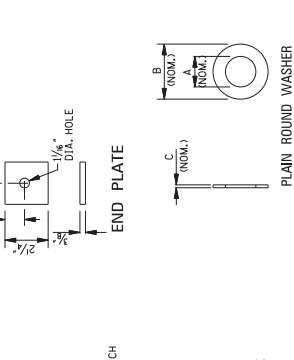
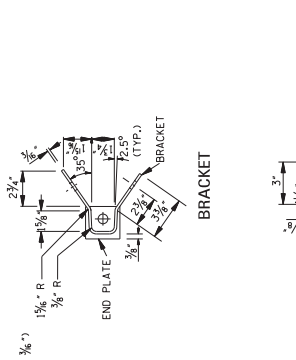
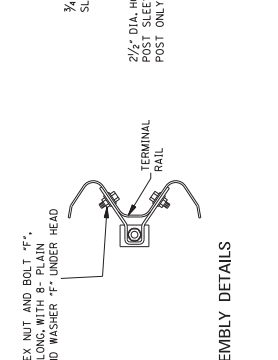
HEX NUT AND BOLT "F"

"L" BRACKET

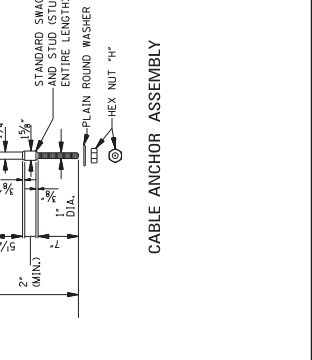
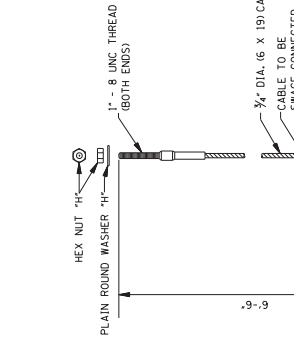
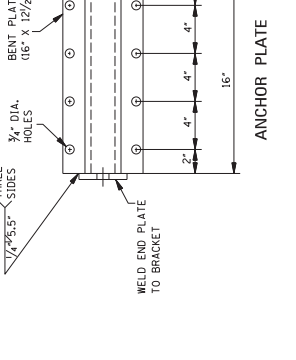
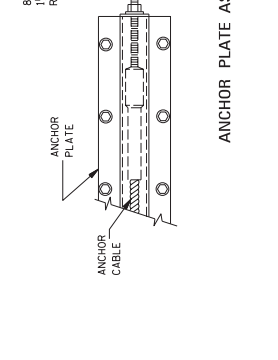
RUB RAIL CONNECTOR BRACKET



BOLT	L	T (MIN.)
"A"	1 1/2"	4"
"B"	1 1/2"	4"
"C"	1 1/2"	4"
"D"	1 1/2"	4"
"E"	1 1/2"	4"
"F"	2"	1 1/4"
	10"	4"
	25"	4"



WASHER (NOM.)	A	B	C
"F"	1 1/4"	1 3/4"	3/4"
"H"	1 1/4"	2"	3/4"



8" - HEX NUT AND BOLT "F", 1 1/2" LONG, WITH B- PLAIN ROUND WASHER "F" UNDER HEAD

ANCHOR CABLE

ANCHOR PLATE

TERMINAL RAIL

BRACKET

END PLATE

WELD END PLATE TO BRACKET

THREE SIDES

BENT PLATE (16" X 12 1/2" X 3/8")

3/4" DIA. HOLES

16"

2"

4"

4"

4"

2"

1"

1"

1"

3/4" DIA. HOLES

1"

1"

3/4" DIA. HOLES

1"

1"

3/4" DIA. HOLES

1"

1"

3/4" DIA. HOLES

1"

1"

3/4" DIA. HOLES

1"

1"

3/4" DIA. HOLES

1"

1"

3/4" DIA. HOLES

1"

1"

3/4" DIA. HOLES

1"

1"

3/4" DIA. HOLES

1"

1"

3/4" DIA. HOLES

1"

1"

3/4" DIA. HOLES

1"

1"

3/4" DIA. HOLES

1"

1"

3/4" DIA. HOLES

1"

1"

3/4" DIA. HOLES

1"

1"

3/4" DIA. HOLES

1"

1"

3/4" DIA. HOLES

1"

1"

3/4" DIA. HOLES

1"

1"

3/4" DIA. HOLES

1"

1"

3/4" DIA. HOLES

1"

1"

3/4" DIA. HOLES

1"

1"

3/4" DIA. HOLES

1"

1"

3/4" DIA. HOLES

1"

1"

3/4" DIA. HOLES

1"

1"

3/4" DIA. HOLES

1"

1"

3/4" DIA. HOLES

1"

1"

3/4" DIA. HOLES

1"

1"

3/4" DIA. HOLES

1"

1"

3/4" DIA. HOLES

1"

1"

3/4" DIA. HOLES

1"

1"

3/4" DIA. HOLES

1"

1"

3/4" DIA. HOLES

1"

1"

3/4" DIA. HOLES

1"

1"

3/4" DIA. HOLES

1"

1"

3/4" DIA. HOLES

1"

1"

3/4" DIA. HOLES

1"

1"

3/4" DIA. HOLES

1"

1"

3/4" DIA. HOLES

1"

1"

3/4" DIA. HOLES

1"

1"

3/4" DIA. HOLES

1"

1"

3/4" DIA. HOLES

1"

1"

3/4" DIA. HOLES

1"

1"

3/4" DIA. HOLES

1"

1"

3/4" DIA. HOLES

1"

1"

3/4" DIA. HOLES

1"

1"

3/4" DIA. HOLES

1"

1"

3/4" DIA. HOLES

1"

1"

3/4" DIA. HOLES

1"

1"

3/4" DIA. HOLES

1"

1"

3/4" DIA. HOLES

1"

1"

3/4" DIA. HOLES

1"

1"

3/4" DIA. HOLES

1"

1"

3/4" DIA. HOLES

1"

1"

3/4" DIA. HOLES

1"

1"

3/4" DIA. HOLES

1"

1"

3/4" DIA. HOLES

1"

1"

3/4" DIA. HOLES

1"

1"

3/4" DIA. HOLES

1"

1"

3/4" DIA. HOLES

1"

1"

3/4" DIA. HOLES

1"

1"

3/4" DIA. HOLES

1"

1"

3/4" DIA. HOLES

1"

1"

3/4" DIA. HOLES

1"

1"

3/4" DIA. HOLES

1"

1"

3/4" DIA. HOLES

1"

1"

3/4" DIA. HOLES

1"

1"

3/4" DIA. HOLES

1"

1"

3/4" DIA. HOLES

1"

1"

3/4" DIA. HOLES

1"

1"

3/4" DIA. HOLES

1"

1"

3/4" DIA. HOLES

1"

1"

3/4" DIA. HOLES

1"

1"

3/4" DIA. HOLES

1"

1"

3/4" DIA. HOLES

1"

1"

3/4" DIA. HOLES

1"

1"

MISSISSIPPI DEPARTMENT OF TRANSPORTATION

SECTION 904 - NOTICE TO BIDDERS NO. 2929

CODE: (SP)

DATE: 01/20/2021

SUBJECT: Remove and Repair Chart Correction

PROJECT: NH-0022-04(065) / 108147301 – Union County

Bidders are hereby advised that the sixth line of the chart on Working Number TS-1 (Sheet Number 3) in the Contract Plans indicates the left and right lanes will be removed and replaced from Station 727+45 to Station 747+20. These station limits are in error. The sixth line of the chart should indicate the following station limits:

LEFT LANE	RIGHT LANE
Sta. 727+45 to Sta. 727+20 (14' Wide)	Sta. 727+45 to Sta. 727+20 (14' Wide)

"General Decision Number: MS20210118 01/01/2021

Superseded General Decision Number: MS20200118

State: Mississippi

Construction Type: Highway

County: Union County in Mississippi.

HIGHWAY CONSTRUCTION PROJECTS

Note: Under Executive Order (EO) 13658, an hourly minimum wage of \$10.95 for calendar year 2021 applies to all contracts subject to the Davis-Bacon Act for which the contract is awarded (and any solicitation was issued) on or after January 1, 2015. If this contract is covered by the EO, the contractor must pay all workers in any classification listed on this wage determination at least \$10.95 per hour (or the applicable wage rate listed on this wage determination, if it is higher) for all hours spent performing on the contract in calendar year 2021. If this contract is covered by the EO and a classification considered necessary for performance of work on the contract does not appear on this wage determination, the contractor must pay workers in that classification at least the wage rate determined through the conformance process set forth in 29 CFR 5.5(a)(1)(ii) (or the EO minimum wage rate, if it is higher than the conformed wage rate). The EO minimum wage rate will be adjusted annually. Please note that this EO applies to the above-mentioned types of contracts entered into by the federal government that are subject to the Davis-Bacon Act itself, but it does not apply to contracts subject only to the Davis-Bacon Related Acts, including those set forth at 29 CFR 5.1(a)(2)-(60). Additional information on contractor requirements and worker protections under the EO is available at www.dol.gov/whd/govcontracts.

Modification Number	Publication Date
0	01/01/2021

SUMS2010-041 08/04/2014

	Rates	Fringes
CARPENTER (Form Work Only).....	\$ 14.13	0.00
CARPENTER, Excludes Form Work....	\$ 13.49	0.00
CEMENT MASON/CONCRETE FINISHER...	\$ 13.70	0.00
ELECTRICIAN.....	\$ 21.80	7.93
HIGHWAY/PARKING LOT STRIPING: Truck Driver (Line Striping Truck).....	\$ 15.97	0.00

INSTALLER - GUARDRAIL.....	\$ 11.51	0.00
IRONWORKER, REINFORCING.....	\$ 14.82	0.00
LABORER: Common or General, Including Asphalt Raking, Shoveling, Spreading and Concrete Work.....	\$ 10.58	0.00
LABORER: Flagger.....	\$ 9.76	0.00
LABORER: Grade Checker.....	\$ 12.77	0.00
LABORER: Landscape.....	\$ 9.56	0.00
LABORER: Mason Tender - Cement/Concrete.....	\$ 11.08	0.00
LABORER: Pipelayer.....	\$ 10.76	0.00
LABORER: Laborer-Cones/ Barricades/Barrels - Setter/Mover/Sweeper.....	\$ 10.38	0.00
OPERATOR: Asphalt Spreader.....	\$ 16.03	0.00
OPERATOR: Backhoe/Excavator/Trackhoe.....	\$ 15.05	0.00
OPERATOR: Boring Machine.....	\$ 15.14	0.00
OPERATOR: Broom/Sweeper.....	\$ 10.94	0.00
OPERATOR: Bulldozer.....	\$ 14.34	0.00
OPERATOR: Concrete Saw.....	\$ 15.68	0.00
OPERATOR: Crane.....	\$ 18.32	0.00
OPERATOR: Distributor.....	\$ 12.59	0.00
OPERATOR: Drill.....	\$ 19.22	0.00
OPERATOR: Grader/Blade.....	\$ 14.50	0.00
OPERATOR: Loader.....	\$ 11.54	0.00
OPERATOR: Mechanic.....	\$ 15.13	0.00
OPERATOR: Milling Machine.....	\$ 15.12	0.00
OPERATOR: Oiler.....	\$ 12.33	0.00
OPERATOR: Paver (Asphalt, Aggregate, and Concrete).....	\$ 14.47	0.00
OPERATOR: Piledriver.....	\$ 15.13	0.00
OPERATOR: Roller (All Types)....	\$ 11.54	0.00
OPERATOR: Scraper.....	\$ 13.15	0.00
OPERATOR: Tractor.....	\$ 11.25	0.00
OPERATOR: Trencher.....	\$ 15.00	0.00

TRUCK DRIVER: Flatbed Truck.....	\$ 13.79	0.00
TRUCK DRIVER: Lowboy Truck.....	\$ 13.30	0.00
TRUCK DRIVER: Mechanic.....	\$ 14.23	0.00
TRUCK DRIVER: Off the Road Truck.....	\$ 12.29	0.00
TRUCK DRIVER: Water Truck.....	\$ 10.58	0.00
TRUCK DRIVER: Dump Truck (All Types).....	\$ 10.97	0.00
TRUCK DRIVER: Semi/Trailer Truck.....	\$ 15.81	0.00

WELDERS - Receive rate prescribed for craft performing operation to which welding is incidental.

=====

Note: Executive Order (EO) 13706, Establishing Paid Sick Leave for Federal Contractors applies to all contracts subject to the Davis-Bacon Act for which the contract is awarded (and any solicitation was issued) on or after January 1, 2017. If this contract is covered by the EO, the contractor must provide employees with 1 hour of paid sick leave for every 30 hours they work, up to 56 hours of paid sick leave each year. Employees must be permitted to use paid sick leave for their own illness, injury or other health-related needs, including preventive care; to assist a family member (or person who is like family to the employee) who is ill, injured, or has other health-related needs, including preventive care; or for reasons resulting from, or to assist a family member (or person who is like family to the employee) who is a victim of, domestic violence, sexual assault, or stalking. Additional information on contractor requirements and worker protections under the EO is available at www.dol.gov/whd/govcontracts.

Unlisted classifications needed for work not included within the scope of the classifications listed may be added after award only as provided in the labor standards contract clauses (29CFR 5.5 (a) (1) (ii)).

The body of each wage determination lists the classification and wage rates that have been found to be prevailing for the cited type(s) of construction in the area covered by the wage determination. The classifications are listed in alphabetical order of ""identifiers"" that indicate whether the particular rate is a union rate (current union negotiated rate for local), a survey rate (weighted average rate) or a union average rate (weighted union average rate).

Union Rate Identifiers

A four letter classification abbreviation identifier enclosed in dotted lines beginning with characters other than ""SU"" or ""UAVG"" denotes that the union classification and rate were

prevailing for that classification in the survey. Example: PLUM0198-005 07/01/2014. PLUM is an abbreviation identifier of the union which prevailed in the survey for this classification, which in this example would be Plumbers. 0198 indicates the local union number or district council number where applicable, i.e., Plumbers Local 0198. The next number, 005 in the example, is an internal number used in processing the wage determination. 07/01/2014 is the effective date of the most current negotiated rate, which in this example is July 1, 2014.

Union prevailing wage rates are updated to reflect all rate changes in the collective bargaining agreement (CBA) governing this classification and rate.

Survey Rate Identifiers

Classifications listed under the ""SU"" identifier indicate that no one rate prevailed for this classification in the survey and the published rate is derived by computing a weighted average rate based on all the rates reported in the survey for that classification. As this weighted average rate includes all rates reported in the survey, it may include both union and non-union rates. Example: SULA2012-007 5/13/2014. SU indicates the rates are survey rates based on a weighted average calculation of rates and are not majority rates. LA indicates the State of Louisiana. 2012 is the year of survey on which these classifications and rates are based. The next number, 007 in the example, is an internal number used in producing the wage determination. 5/13/2014 indicates the survey completion date for the classifications and rates under that identifier.

Survey wage rates are not updated and remain in effect until a new survey is conducted.

Union Average Rate Identifiers

Classification(s) listed under the UAVG identifier indicate that no single majority rate prevailed for those classifications; however, 100% of the data reported for the classifications was union data. EXAMPLE: UAVG-OH-0010 08/29/2014. UAVG indicates that the rate is a weighted union average rate. OH indicates the state. The next number, 0010 in the example, is an internal number used in producing the wage determination. 08/29/2014 indicates the survey completion date for the classifications and rates under that identifier.

A UAVG rate will be updated once a year, usually in January of each year, to reflect a weighted average of the current negotiated/CBA rate of the union locals from which the rate is based.

WAGE DETERMINATION APPEALS PROCESS

1.) Has there been an initial decision in the matter? This can be:

- * an existing published wage determination
- * a survey underlying a wage determination
- * a Wage and Hour Division letter setting forth a position on a wage determination matter

* a conformance (additional classification and rate) ruling

On survey related matters, initial contact, including requests for summaries of surveys, should be with the Wage and Hour Regional Office for the area in which the survey was conducted because those Regional Offices have responsibility for the Davis-Bacon survey program. If the response from this initial contact is not satisfactory, then the process described in 2.) and 3.) should be followed.

With regard to any other matter not yet ripe for the formal process described here, initial contact should be with the Branch of Construction Wage Determinations. Write to:

Branch of Construction Wage Determinations
Wage and Hour Division
U.S. Department of Labor
200 Constitution Avenue, N.W.
Washington, DC 20210

2.) If the answer to the question in 1.) is yes, then an interested party (those affected by the action) can request review and reconsideration from the Wage and Hour Administrator (See 29 CFR Part 1.8 and 29 CFR Part 7). Write to:

Wage and Hour Administrator
U.S. Department of Labor
200 Constitution Avenue, N.W.
Washington, DC 20210

The request should be accompanied by a full statement of the interested party's position and by any information (wage payment data, project description, area practice material, etc.) that the requestor considers relevant to the issue.

3.) If the decision of the Administrator is not favorable, an interested party may appeal directly to the Administrative Review Board (formerly the Wage Appeals Board). Write to:

Administrative Review Board
U.S. Department of Labor
200 Constitution Avenue, N.W.
Washington, DC 20210

4.) All decisions by the Administrative Review Board are final.

=====

END OF GENERAL DECISION

..

Mill & Overlay approximately 5 miles on SR 15 from the Pontotoc County Line to 0.02 miles North of Central Avenue, known as Federal Aid Project No. NH-0022-04(065) / 108147301 in Union County.

Line No.	Item Code	Adj Code	Quantity	Units	Description [Fixed Unit Price]
Roadway Items					
0010	202-B007		865	Square Yard	Removal of Asphalt Pavement, All Depths
0020	202-B069		400	Square Yard	Removal of Concrete Pavement w/ Variable Depth Overlay
0022	202-B150		1,818	Linear Feet	Removal of Guard Rail Including Post, Blockouts & Hardware
0024	202-B152		16	Each	Removal of Guard Rail Terminal End Section
0030	203-G001	(E)	832	Cubic Yard	Excess Excavation, FM, AH
0040	304-A002	(GY)	2,240	Cubic Yard	Granular Material, LVM, Class 3, Group C
0050	403-A014	(BA1)	12,089	Ton	9.5-mm, MT, Asphalt Pavement
0060	406-D001		126,530	Square Yard	Fine Milling of Bituminous Pavement, All Depths
0070	407-A001	(A2)	8,857	Gallon	Asphalt for Tack Coat
0080	423-A001		11	Mile	Rumble Strips, Ground In
0090	503-C010		1,060	Linear Feet	Saw Cut, Full Depth
0092	606-B001		1,600	Linear Feet	Guard Rail, Class A, Type 1
0094	606-D005		4	Each	Guard Rail, Bridge End Section, Type A
0096	606-D012		8	Each	Guard Rail, Bridge End Section, Type D Modified
0098	606-E005		16	Each	Guard Rail, Terminal End Section, Flared
0100	618-A001		1	Lump Sum	Maintenance of Traffic
0110	618-B001		1	Square Feet	Additional Construction Signs [\$10.00]
0120	619-A1001		21	Mile	Temporary Traffic Stripe, Continuous White
0130	619-A2001		7	Mile	Temporary Traffic Stripe, Continuous Yellow
0140	619-A4002		10	Mile	Temporary Traffic Stripe, Skip Yellow
0150	619-A5001		13,004	Linear Feet	Temporary Traffic Stripe, Detail
0160	619-A6001		90	Square Feet	Temporary Traffic Stripe, Legend
0170	619-A6002		3,184	Linear Feet	Temporary Traffic Stripe, Legend
0180	620-A001		1	Lump Sum	Mobilization
0190	626-B004		11	Mile	6" Thermoplastic Traffic Stripe, Continuous White
0200	626-D003		5	Mile	6" Thermoplastic Traffic Stripe, Skip Yellow
0210	626-E004		4	Mile	6" Thermoplastic Traffic Stripe, Continuous Yellow
0220	626-G002		11,092	Linear Feet	Thermoplastic Detail Stripe, White
0230	626-G003		1,912	Linear Feet	Thermoplastic Detail Stripe, Yellow
0240	626-H004		90	Square Feet	Thermoplastic Legend, White
0250	626-H005		1,592	Linear Feet	Thermoplastic Legend, White
0260	627-J001		450	Each	Two-Way Clear Reflective High Performance Raised Markers

Line No.	Item Code	Adj Code	Quantity	Units	Description [Fixed Unit Price]
0270	627-L001		396	Each	Two-Way Yellow Reflective High Performance Raised Markers
0280	630-F006		76	Each	Delineators, Guard Rail, White
0290	907-619-B001		66	Linear Feet	Temporary Portable Rumble Strips
ALTERNATE GROUP AA NUMBER 1					
0300	304-H001	(GY)	999	Cubic Yard	3/4" and Down Crushed Stone Base, LVM
ALTERNATE GROUP AA NUMBER 2					
0310	304-H002	(GY)	999	Cubic Yard	Size 610 Crushed Stone Base, LVM
ALTERNATE GROUP AA NUMBER 3					
0320	304-H003	(GY)	999	Cubic Yard	Size 825B Crushed Stone Base, LVM