

SECTION 905 -- PROPOSAL (CONTINUED)

I (We) hereby certify by digital signature and electronic submission via Bid Express of the Section 905 proposal below, that all certifications, disclosures and affidavits incorporated herein are deemed to be duly executed in the aggregate, fully enforceable and binding upon delivery of the bid proposal. I (We) further acknowledge that this certification shall not extend to the bid bond or alternate security which must be separately executed for the benefit of the Commission. This signature does not cure deficiencies in any required certifications, disclosures and/or affidavits. I (We) also acknowledge the right of the Commission to require full and final execution on any certification, disclosure or affidavit contained in the proposal at the Commission's election upon award. Failure to so execute at the Commission's request within the time allowed in the Standard Specifications for execution of all contract documents will result in forfeiture of the bid bond or alternate security.

Bidder acknowledges receipt of and has added to and made a part of the proposal and contract documents the following addendum (addenda):

ADDENDUM NO. <u> 1 </u>	DATED <u> 9/21/2021 </u>	ADDENDUM NO. <u> </u>	DATED <u> </u>
ADDENDUM NO. <u> </u>	DATED <u> </u>	ADDENDUM NO. <u> </u>	DATED <u> </u>
ADDENDUM NO. <u> </u>	DATED <u> </u>	ADDENDUM NO. <u> </u>	DATED <u> </u>

Number	Description
1	Revised Bid Items; Revised or Added Plan Sheet Nos. 2, 11-12, 8001, 8003, 8030 & 8043; Amendment EBSx Download Required.

TOTAL ADDENDA: 1
(Must agree with total addenda issued prior to opening of bids)

Respectfully Submitted,

DATE _____

Contractor

BY _____
Signature

TITLE _____

ADDRESS _____

CITY, STATE, ZIP _____

PHONE _____

FAX _____

E-MAIL _____

(To be filled in if a corporation)

Our corporation is chartered under the Laws of the State of _____ and the names, titles and business addresses of the executives are as follows:

President Address

Secretary Address

Treasurer Address

The following is my (our) itemized proposal.

BR-0070-02(015)/ 102624303000

Quitman County(ies)

Revised 01/26/2016

Bridge Replacements on SR 6 through Marks (Bridge Nos. 31.3, 32.1, 33.2 & 33.5), known as Federal Aid Project No. BR-0070-02(015) / 102624303 in Quitman County.

Line No.	Item Code	Adj Code	Quantity	Units	Description [Fixed Unit Price]
Roadway Items					
0010	201-A001		1	Lump Sum	Clearing and Grubbing
0020	201-B001		5	Acre	Clearing and Grubbing
0030	202-A001		1	Lump Sum	Removal of Obstructions
0040	202-B019		53	Linear Feet	Removal of Box Culvert
0050	202-B037		124	Linear Feet	Removal of Bridge Railing
0060	202-B069		24,153	Square Yard	Removal of Concrete Pavement w/ Variable Depth Overlay
0070	202-B150		2,576	Linear Feet	Removal of Guard Rail Including Post, Blockouts & Hardware
0080	202-B165		1	Each	Removal of Inlets, All Sizes
0090	202-B191		399	Linear Feet	Removal of Pipe, 8" And Above
0100	202-B240		4,453	Linear Feet	Removal of Traffic Stripe
0110	203-A001	(E)	59,207	Cubic Yard	Unclassified Excavation, FM, AH
0120	203-EX020	(E)	163,420	Cubic Yard	Borrow Excavation, AH, FME, Class B9
0130	203-G001	(E)	86,747	Cubic Yard	Excess Excavation, FM, AH
0140	206-A001	(S)	1,234	Cubic Yard	Structure Excavation
0150	206-B001	(E)	537	Cubic Yard	Select Material for Undercuts, Contractor Furnished, FM
0160	209-A005		51,870	Square Yard	Geotextile Stabilization, Type V, Non-Woven
0170	211-B001	(E)	8,346	Cubic Yard	Topsoil for Slope Treatment, Contractor Furnished
0180	213-C001		16	Ton	Superphosphate
0190	216-A001		1,452	Square Yard	Solid Sodding
0200	217-A001		358	Square Yard	Ditch Liner
0210	219-A001		29	Thousand Gallon	Watering [\$20.00]
0220	220-A001		31	Acre	Insect Pest Control [\$30.00]
0230	221-A001	(S)	247	Cubic Yard	Concrete Paved Ditch
0240	223-A001		62	Acre	Mowing [\$50.00]
0250	224-A001		1,069	Square Yard	Soil Reinforcing Mat
0260	225-A001		31	Acre	Grassing
0270	225-B001		93	Ton	Agricultural Limestone
0280	225-C001		62	Ton	Mulch, Vegetative Mulch
0290	226-A001		31	Acre	Temporary Grassing
0300	234-A001		23,200	Linear Feet	Temporary Silt Fence
0310	234-C001		8,100	Linear Feet	Super Silt Fence
0320	234-D001		1	Each	Inlet Siltation Guard

Line No.	Item Code	Adj Code	Quantity	Units	Description [Fixed Unit Price]
0330	234-E001		1	Each	Reset Inlet Siltation Guard
0340	234-F001		1,030	Linear Feet	Turbidity Barrier
0350	236-A008		1	Each	Silt Basin, Type D
0360	237-A002		31,800	Linear Feet	Wattles, 20"
0370	239-A001		4,520	Linear Feet	Temporary Slope Drains
0380	245-A001		200	Linear Feet	Silt Dike
0390	246-B001		900	Each	Rockbags
0400	247-A001		3	Each	Temporary Stream Diversion
0410	249-A001		4,420	Ton	Riprap for Erosion Control
0420	249-B001		2,940	Cubic Yard	Remove and Reset Riprap
0430	304-B002	(GT)	15,150	Ton	Granular Material, Class 3, Group D
0440	403-A002	(BA1)	2,535	Ton	12.5-mm, MT, Asphalt Pavement
0445	403-A003	(BA1)	252	Ton	12.5-mm, ST, Asphalt Pavement
0450	403-A005	(BA1)	2,852	Ton	19-mm, MT, Asphalt Pavement
0460	403-A006	(BA1)	3,644	Ton	19-mm, ST, Asphalt Pavement
0470	403-A014	(BA1)	3,732	Ton	9.5-mm, MT, Asphalt Pavement
0480	403-A015	(BA1)	476	Ton	9.5-mm, ST, Asphalt Pavement
0490	403-B002	(BA1)	158	Ton	12.5-mm, MT, Asphalt Pavement, Leveling
0500	403-C003	(BA1)	32	Ton	19-mm, ST, Asphalt Pavement, Trench Widening
0510	406-D001		21,765	Square Yard	Fine Milling of Bituminous Pavement, All Depths
0520	407-A001	(A2)	8,722	Gallon	Asphalt for Tack Coat
0530	413-E001		188	Linear Feet	Sawing and Sealing Transverse Joints in Asphalt Pavement
0540	423-A001		5	Mile	Rumble Strips, Ground In
0550	502-A001	(C)	404	Square Yard	Reinforced Cement Concrete Bridge End Pavement
0560	503-C010		120	Linear Feet	Saw Cut, Full Depth
0570	601-A001	(S)	782	Cubic Yard	Class "B" Structural Concrete
0580	601-B001	(S)	3	Cubic Yard	Class "B" Structural Concrete, Minor Structures
0590	602-A001	(S)	141,093	Pounds	Reinforcing Steel
0600	603-ALT003	(S)	292	Linear Feet	18" Type A Alternate Pipe
0610	603-ALT006	(S)	144	Linear Feet	24" Type A Alternate Pipe
0620	603-ALT008	(S)	32	Linear Feet	29" x 18" Type A Alternate Pipe
0630	603-ALT009	(S)	72	Linear Feet	30" Type A Alternate Pipe
0640	603-ALT016	(S)	104	Linear Feet	48" Type A Alternate Pipe
0650	603-CA040	(S)	112	Linear Feet	30" Reinforced Concrete Pipe, Class III

Line No.	Item Code	Adj Code	Quantity	Units	Description [Fixed Unit Price]
0660	603-CB004	(S)	2	Each	24" Reinforced Concrete End Section
0670	603-CB005	(S)	4	Each	30" Reinforced Concrete End Section
0680	603-CB008	(S)	2	Each	48" Reinforced Concrete End Section
0690	603-CF003	(S)	2	Each	29" x 18" Concrete Arch Pipe End Section
0700	604-B001		250	Pounds	Gratings
0710	605-AA001	(S)	107	Square Yard	Geotextile for Subsurface Drainage, Type III
0720	605-O002	(S)	192	Linear Feet	4" Perforated Sewer Pipe for Underdrains, SDR 23.5
0730	605-P002	(S)	24	Linear Feet	4" Non-perforated Sewer Pipe for Underdrains, SDR 23.5
0740	605-W001	(GY)	7	Cubic Yard	Filter Material for Combination Storm Drain and/or Underdrains, Type A, FM
0750	606-B001		650	Linear Feet	Guard Rail, Class A, Type 1
0760	606-D022		8	Each	Guard Rail, Bridge End Section, Type I
0770	606-E005		8	Each	Guard Rail, Terminal End Section, Flared
0780	609-D003	(S)	337	Linear Feet	Combination Concrete Curb and Gutter Type 2
0790	612-A001		254	Cubic Yard	Flowable Fill, Excavatable
0800	614-A003	(S)	128	Square Yard	Concrete Driveway, Without Reinforcement, 6-inch Thickness
0810	615-A004	(S)	80	Linear Feet	Concrete Bridge End Barrier, 43.5"
0820	617-A001		44	Each	Right-of-Way Marker
0830	618-A001		1	Lump Sum	Maintenance of Traffic
0840	619-A1001		9	Mile	Temporary Traffic Stripe, Continuous White
0850	619-A1005		2,660	Linear Feet	Temporary Traffic Stripe, Continuous White, Type 1 Tape
0860	619-A2001		9	Mile	Temporary Traffic Stripe, Continuous Yellow
0870	619-A2006		1,160	Linear Feet	Temporary Traffic Stripe, Continuous Yellow, Type 1 Tape
0880	619-A4002		2	Mile	Temporary Traffic Stripe, Skip Yellow
0890	619-A5001		4,757	Linear Feet	Temporary Traffic Stripe, Detail
0900	619-A6002		484	Linear Feet	Temporary Traffic Stripe, Legend
0910	619-D1001		96	Square Feet	Standard Roadside Construction Signs, Less than 10 Square Feet
0920	619-D2001		887	Square Feet	Standard Roadside Construction Signs, 10 Square Feet or More
0930	619-G4001		24	Linear Feet	Barricades, Type III, Double Faced
0940	619-G4005		384	Linear Feet	Barricades, Type III, Single Faced
0950	619-G5001		74	Each	Free Standing Plastic Drums
0960	619-G7001		16	Each	Warning Lights, Type "B"
0970	620-A001		1	Lump Sum	Mobilization
0980	626-C002		5	Mile	6" Thermoplastic Double Drop Edge Stripe, Continuous White

Line No.	Item Code	Adj Code	Quantity	Units	Description [Fixed Unit Price]
0990	626-D001		2	Mile	6" Thermoplastic Double Drop Traffic Stripe, Skip Yellow
1000	626-F001		2	Mile	6" Thermoplastic Double Drop Edge Stripe, Continuous Yellow
1010	626-G002		4,346	Linear Feet	Thermoplastic Detail Stripe, White
1020	626-H004		167	Square Feet	Thermoplastic Legend, White
1030	626-H005		292	Linear Feet	Thermoplastic Legend, White
1040	627-L001		283	Each	Two-Way Yellow Reflective High Performance Raised Markers
1050	630-A001		218	Square Feet	Standard Roadside Signs, Sheet Aluminum, 0.080" Thickness
1060	630-A003		398	Square Feet	Standard Roadside Signs, Sheet Aluminum, 0.125" Thickness
1070	630-C001		885	Linear Feet	Square Tube Posts, 4.0 lb/ft
1080	630-C1001		40	Linear Feet	Square Post Inner Sleeve
1090	630-E005		190	Pounds	Structural Steel Angles & Bars, Aluminum Unistrut
1100	630-F006		44	Each	Delineators, Guard Rail, White
1110	630-G003		4	Each	Type 3 Object Markers, OM-3L, Post Mounted
1120	630-G007		4	Each	Type 3 Object Markers, OM-3R, Post Mounted
1130	699-A001		1	Lump Sum	Roadway Construction Stakes
1140	815-A007	(S)	649	Ton	Loose Riprap, Size 300
1150	815-E001	(S)	775	Square Yard	Geotextile under Riprap
1160	815-F002	(S)	593	Ton	Sediment Control Stone
1170	907-207-A001		2	Each	Settlement Plate
1180	907-253-A001		175	Linear Feet	Coir Fiber Baffle
1190	907-832-PP003		18,728	Square Yard	Concrete Mat
1200	907-899-A001		1	Lump Sum	Railway-Highway Provisions
1210	907-906001		1,040	Hours	Trainees [\$5.00]
ALTERNATE GROUP AA NUMBER 1					
1220	304-F001	(GT)	17,800	Ton	3/4" and Down Crushed Stone Base
ALTERNATE GROUP AA NUMBER 2					
1230	304-F002	(GT)	17,800	Ton	Size 610 Crushed Stone Base
ALTERNATE GROUP AA NUMBER 3					
1240	304-F003	(GT)	17,800	Ton	Size 825B Crushed Stone Base
ALTERNATE GROUP BB NUMBER 1					
1250	605-W002	(GY)	97	Cubic Yard	Filter Material for Combination Storm Drain and/or Underdrains, Type B, FM
ALTERNATE GROUP BB NUMBER 2					
1260	605-W003	(GY)	97	Cubic Yard	Filter Material for Combination Storm Drain and/or Underdrains, Type C, FM
Bridge Items					

Line No.	Item Code	Adj Code	Quantity	Units	Description [Fixed Unit Price]
1270	501-K001		5,891	Square Yard	Transverse Grooving
1280	803-K014	(S)	520	Linear Feet	Drilled Shaft, 84" Diameter
1290	803-L009	(S)	1	Each	Test Shaft, 84" Diameter
1300	803-M012	(S)	145	Linear Feet	Trial Shaft, 84" Diameter
1310	803-N001	(S)	40	Linear Feet	Exploration
1320	803-O028	(S)	100	Linear Feet	Temporary Casing, 84" Diameter
1330	803-P001	(S)	3,715	Linear Feet	24" Steel Pipe Piling, Wall Thickness 0.500"
1340	803-P009	(S)	1,040	Linear Feet	30" Steel Pipe Piling, Wall Thickness 0.625"
1350	804-C186	(S)	2,625	Linear Feet	110' Prestressed Concrete Beam, Type FIB-45
1360	804-C196	(S)	837	Linear Feet	140' Prestressed Concrete Beam, Type FIB-63
1370	805-A001	(S)	616,381	Pounds	Reinforcement
1380	805-C001	(S)	3,390	Pounds	Reinforcement, Corrosion Resistant
1390	810-A007	(S)	1,130,893	Pounds	Structural Steel, A 709, Grade 50W
1400	810-A008	(S)	1,189,625	Pounds	Structural Steel, A 709, Grade HPS 70W
1410	811-D001	(S)	20	Each	Disc Bearing Device
1420	813-A003	(S)	2,674	Linear Feet	Concrete Railing, 42"
1430	815-A007	(S)	1,741	Ton	Loose Riprap, Size 300
1440	815-E001	(S)	3,763	Square Yard	Geotextile under Riprap
1450	907-803-B001	(S)	2	Each	Conventional Static Pile Load Test [\$5,000.00]
1460	907-803-I004	(S)	6	Each	PDA Test Pile, Steel Pipe Pile
1470	907-803-J001	(S)	4	Each	Pile Restrike
1480	907-804-A001	(S)	509	Cubic Yard	Bridge Concrete, Class BDX
1490	907-804-A002	(S)	580	Cubic Yard	Bridge Concrete, Class AA
1500	907-804-A004	(S)	1,002	Cubic Yard	Bridge Concrete, Class BD
1510	907-823-A001		94	Linear Feet	Preformed Joint Seal, Type I
1520	907-823-A002		94	Linear Feet	Preformed Joint Seal, Type II
1530	907-827-A002		94	Linear Feet	7" Modular Bridge Joint System

STATE	PROJECT NO.
MISS.	BR-0070-02(015)

REVISION DATE

WKG. NO.

SH. NO.

DESCRIPTION OF SHEET

REVISION DATE

WKG. NO.

SH. NO.

DESCRIPTION OF SHEET

SPECIAL DESIGN - ROADWAY ITEMS (49)

INTERSECTION DETAILS - SR 6 & ACCESS ROAD 32

INTERSECTION DETAILS - SR 6 & COLDWATER STREET 33

INTERSECTION DETAILS - SR 6 & RIVERVIEW ROAD 34

INTERSECTION DETAILS - SR 6 & JOSSELL ROAD 35

SEQUENCE OF CONSTRUCTION PHASE 1 36

SEQUENCE OF CONSTRUCTION PHASE 1 37

SEQUENCE OF CONSTRUCTION PHASE 1 38

SEQUENCE OF CONSTRUCTION PHASE 2 39

SEQUENCE OF CONSTRUCTION PHASE 2 40

SEQUENCE OF CONSTRUCTION PHASE 2 41

SEQUENCE OF CONSTRUCTION PHASE 3 42

SEQUENCE OF CONSTRUCTION PHASE 4 43

SEQUENCE OF CONSTRUCTION PHASE 4 44

CONSTRUCTION SIGNING PLAN 45

CONSTRUCTION SIGNING PLAN 46

CONSTRUCTION SIGNING PLAN 47

TRAFFIC CONTROL PHASE 1 48

TRAFFIC CONTROL PHASE 1 49

TRAFFIC CONTROL PHASE 2 50

TRAFFIC CONTROL PHASE 2 51

TRAFFIC CONTROL PHASE 2 52

TRAFFIC CONTROL PHASE 3 53

TRAFFIC CONTROL PHASE 3 54

EROSION CONTROL PLAN - SR 6 STA. 820+00 TO STA. 850+00 55

RIPARIAN BUFFER BR. NO. 31.3 56

EROSION CONTROL PLAN - SR 6 STA. 850+00 TO STA. 880+00 57

EROSION CONTROL PLAN - ACCESS ROAD 58

EROSION CONTROL PLAN - SR 6 DETOUR 59

EROSION CONTROL PLAN - SR 6 STA. 880+00 TO STA. 910+00 60

RIPARIAN BUFFER BR. NO. 32.1 61

EROSION CONTROL PLAN - COLDWATER STREET 62

EROSION CONTROL PLAN - RIVERVIEW ROAD 63

EROSION CONTROL PLAN - JOSSELL ROAD 64

EROSION CONTROL PLAN - SR 6 STA. 940+00 TO STA. 966+00 65

BRIDGE END PAVEMENT WITH RAIL, OVERLAY AND SLEEPER SLAB (NEW CONSTRUCTION) 66

VEGETATION SCHEDULE 67

EASEMENT COORDINATES 68

RIGHT OF WAY MARKERS 69

PAVEMENT MARKING DETAIL - SR 6 B.O.P. TO STA. 855+00 70

PAVEMENT MARKING DETAIL - SR 6 STA. 855+00 TO STA. 885+00 71

PAVEMENT MARKING DETAIL - SR 6 STA. 885+00 TO STA. 900+00 72

PAVEMENT MARKING DETAIL - SR 6 STA. 900+00 TO STA. 915+00 73

PAVEMENT MARKING DETAIL - SR 6 STA. 915+00 TO STA. 930+00 74

PAVEMENT MARKING DETAIL - SR 6 STA. 930+00 TO STA. 960+00 75

PAVEMENT MARKING DETAIL - SR 6 STA. 960+00 TO E.O.P. 76

STA. 913+38 12X8 RCBC 77

STA. 946+23 DBL. 10X10 RCBB 78

STA. 959+57 12X10 RCBC 79

SURVEY CONTROL SHEET 80

1

DETAILED INDEX & GENERAL NOTES (5)

DI-1 2

DI-2 3

DI-3 4

GN-1 5

GN-2 6

TYPICAL SECTION SHEETS (4)

TYPICAL SECTION - SR 6 7

TYPICAL SECTION - SR 6 8

TYPICAL SECTION - LOCAL ROADS & DETOUR 9

TYPICAL SECTION - DETAILS 10

QUANTITY SHEETS (10)

SQ-1 11

SQ-2 12

SQ-3 13

EQ-1 14

EQ-2 15

EQ-3 16

EQ-4 17

EQ-5 18

SRS-1 19

SRS-2 20

PLAN AND PROFILE SHEETS (11)

SR 6 STA. 820+00 TO STA. 850+00 21

CASSIDY BAYOU 22

SR 6 STA. 850+00 TO STA. 880+00 23

ACCESS ROAD 24

SR 6 DETOUR 25

SR 6 STA. 880+00 TO STA. 910+00 26

COLDWATER STREET 27

RIVERVIEW ROAD 28

SR 6 STA. 910+00 TO STA. 940+00 29

JOSSELL ROAD 30

SR 6 STA. 940+00 TO STA. 966+00 31

PERMANENT SIGNS (9)

PERMANENT SIGNING PLANS - B.O.P. TO STA. 855+00 1001

PERMANENT SIGNING PLANS - STA. 855+00 TO STA. 885+00 1002

PERMANENT SIGNING PLANS - STA. 885+00 TO STA. 915+00 1003

PERMANENT SIGNING PLANS - STA. 915+00 TO STA. 945+00 1004

PERMANENT SIGNING PLANS - STA. 945+00 TO E.O.P. 1005

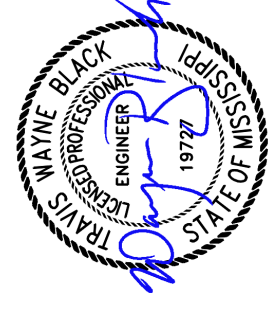
PERMANENT SIGNING DETAILS 1006

PERMANENT SIGNING DETAILS 1007

SIGN SUPPORT HARDWARE - 2.5" SQUARE POST 1008

SIGN SUPPORT HARDWARE - 2.0" SQUARE POST 1009

GARVER, LLC	
PS & E PLANS - 01-06-2021	
FMS CON. # 102624/303000	
REVISIONS	
DATE	SHEET NO. BY
08/13/21	13 TWB
08/24/21	11 TWB
09/17/21	11,12 TWB



09/17/2021

TRAFFIC ROADWAY

MISSISSIPPI DEPARTMENT OF TRANSPORTATION

DETAILED INDEX

SR 6

COUNTY: QUITMAN

PROJ. NUM.: BR-0070-02(015)

WORKING NUMBER: DI-1

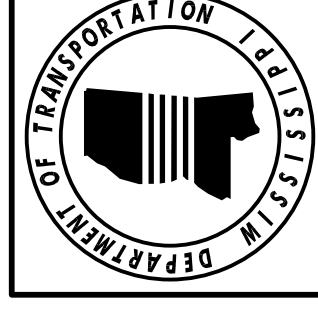
SHEET NUMBER: 2

DATE: _____

DESIGN TEAM: _____

CHECKED: TWB

DATE AUG. 2021: _____



ADDENDUM

STATE	PROJECT NO.
MISS	BR-0070-02(015)

SUMMARY OF QUANTITIES (SHEET 1)

PAY ITEM NO.	PAY ITEM	UNIT	QUITMAN : 102624-303000	
			Prelim	Final
201-A001	Clearing and Grubbing	LS	1	
201-B001	Clearing and Grubbing	ACRE	5	
202-A001	Removal of Obstructions	LS	1	5
202-B019	Removal of Box Culvert	LF	53	1
202-B037	Removal of Bridge Railing	LF	124	7
202-B069	Removal of Concrete Pavement w/ Variable Depth Overlay	SY	24,153	
202-B150	Removal of Guard Rail Including Post, Blockouts & Hardware	LF	2,576	9
202-B165	Removal of Inlets, All Sizes	EA	1	2
202-B191	Removal of Pipe, 8" And Above	LF	399	
202-B240	Removal of Traffic Stripe	LF	4,453	
203-A001	Unclassified Excavation, FM, AH	CY	59,207	
203-EX020	Borrow Excavation, AH, FME, Class B9	CY	163,420	
203-G001	Excess Excavation, FM, AH	CY	86,747	
206-A001	Structure Excavation	CY	1,234	4
206-B001	Select Material for Undercuts, Contractor Furnished, FM	CY	537	
907-207-A001	Settlement Plate	EA	2	2
209-A005	Geotextile Stabilization, Type V, Non-Woven	SY	51,870	
211-B001	Topsoil for Slope Treatment, Contractor Furnished	CY	8,346	
213-C001	Superphosphate	TON	16	
216-A001	Solid Sodding	SY	1,452	
217-A001	Ditch Liner	SY	358	
219-A001	Watering	KGAL	29	
220-A001	Insect Pest Control	ACRE	31	
221-A001	Concrete Paved Ditch	CY	247	3
223-A001	Mowing	ACRE	62	
224-A001	Soil Reinforcing Mat	SY	1,069	
225-A001	Grassing	ACRE	31	
225-B001	Agricultural Limestone	TON	93	
225-C001	Mulch, Vegetative Mulch	TON	62	
226-A001	Temporary Grassing	ACRE	31	
234-A001	Temporary Silt Fence	LF	23,200	
234-C001	Super Silt Fence	LF	8,100	
234-D001	Inlet Siltation Guard	EA	1	
234-E001	Reset Inlet Siltation Guard	EA	1	
234-F001	Turbidity Barrier	LF	1,030	
236-A008	Silt Basin, Type D	EA	1	
237-A002	Wattles, 20"	LF	31,800	
239-A001	Temporary Slope Drains	LF	4,520	
245-A001	Silt Dike	LF	200	
246-B001	Rockbags	EA	900	
247-A001	Temporary Stream Diversion	EA	3	8
249-A001	Riprap for Erosion Control	TON	4,420	
249-B001	Remove and Reset Riprap	CY	2,940	
907-253-A001	Coir Fiber Baffle	LF	175	

- 1 STA. 914+58, 53' - 12'x8' RCBC
- 2 TEMPORARY MI-1 INSTALLED BETWEEN DETOUR AND EXISTING SR 6
- 3 INCLUDES 209 CY FOR PERMANENT DITCH TREATMENT 3 CY FOR OUTLET APRONS AND 35 CY FOR PAVED FLUMES
- 4 INCLUDES 135 CY FOR CROSS DRAINS AND 1099 CY FOR BOXES.
- 5 FOR TEMPORARY CONSTRUCTION EASEMENTS.
- 6 STA. 845+75 BR. NO. 31.3 10 @ 40' I-BEAM SPANS 400' ALONG CL
- 7 STA. 883+82 BR. NO. 32.1 4@40', 1@55', 1@100', 1@55', 5@40' 560' ALONG CL
- 8 INCLUDES 62 LF AT STATION 946+08 AND 62 LF AT STATION 959+43
- 9 STA. 913+38; STA. 946+23; STA. 959+57
- 9 TO INCLUDE BRIDGE END SECTIONS, TERMINAL END SECTIONS, POSTS, BLOCKOUTS, AND APPERTENUNCES.



MISSISSIPPI DEPARTMENT OF TRANSPORTATION
SUMMARY OF QUANTITIES

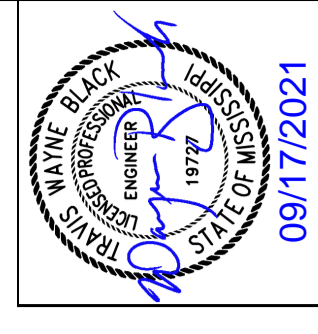
08/24/2021	ADDED PAY ITEM 907-207-A001	SM
09/17/2021	ADDED PAY ITEM 403-A003	SM
	Revision	BY

PROJ NO: BR-0070-02(015)
 COUNTY: QUITMAN

Working Number: SQ-1
 Sheet Number: 11

Design Team: GARVER
 Checked: JMB
 Date: SEPT. 2021

FILENAME: SQ-1



ADDENDUM

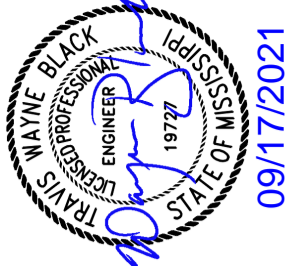
STATE	PROJECT NO.
MISS	BR-0070-02(015)

SUMMARY OF QUANTITIES (SHEET 2)

PAY ITEM NO.	PAY ITEM	UNIT	QUITMAN : 102624-303000	
			Prelim	Final
304-B002	Granular Material, Class 3, Group D	TON	15,150	
304-F001	3/4" and Down Crushed Stone Base	TON	17,800	
	OR			
304-F002	Size 610 Crushed Stone Base	TON	17,800	
	OR			
304-F003	Size 825B Crushed Stone Base	TON	17,800	
403-A002	12.5-mm, MT, Asphalt Pavement	TON	2,535	
403-A003	12.5-mm, ST, Asphalt Pavement	TON	252	
403-A005	19-mm, MT, Asphalt Pavement	TON	2,852	
403-A006	19-mm, ST, Asphalt Pavement	TON	3,644	
403-A014	9.5-mm, MT, Asphalt Pavement	TON	3,732	
403-A015	9.5-mm, ST, Asphalt Pavement	TON	476	
403-B002	12.5-mm, MT, Asphalt Pavement, Leveling	TON	158	
403-C003	19-mm, ST, Asphalt Pavement, Trench Widening	TON	32	
406-D001	Fine Milling of Bituminous Pavement, All Depths	SY	21,765	
407-A001	Asphalt for Tack Coat	GAL	8,722	
413-E001	Sawing and Sealing Transverse Joints in Asphalt Pavement	LF	188	
423-A001	Rumble Strips, Ground In	MI	5	
502-A001	Reinforced Cement Concrete Bridge End Pavement	SY	404	
503-C010	Saw Cut, Full Depth	LF	120	
601-A001	Class "B" Structural Concrete	CY	782	
601-B001	Class "B" Structural Concrete, Minor Structures	CY	3	
602-A001	Reinforcing Steel	LBS	141,093	
603-ALT003	18" Type A Alternate Pipe	LF	292	
603-ALT006	24" Type A Alternate Pipe	LF	144	
603-ALT008	29" x 18" Type A Alternate Pipe	LF	32	
603-ALT009	30" Type A Alternate Pipe	LF	72	
603-ALT016	48" Type A Alternate Pipe	LF	104	
603-CA040	30" Reinforced Concrete Pipe, Class III	LF	112	
603-CB004	24" Reinforced Concrete End Section	EA	2	
603-CB005	30" Reinforced Concrete End Section	EA	4	
603-CB008	48" Reinforced Concrete End Section	EA	2	
603-CF003	29" x 18" Concrete Arch Pipe End Section	EA	2	
604-B001	Gratings	LBS	250	
605-AA001	Geotextile for Subsurface Drainage, Type III	SY	107	
605-O002	4" Perforated Sewer Pipe for Underdrains, SDR 23.5	LF	192	
605-P002	4" Non-perforated Sewer Pipe for Underdrains, SDR 23.5	LF	24	
605-W001	Filter Material for Combination Storm Drain and/or Underdrains, Type A, FM	CY	7	
605-W002	Filter Material for Combination Storm Drain and/or Underdrains, Type B, FM	CY	97	
	OR			
605-W003	Filter Material for Combination Storm Drain and/or Underdrains, Type C, FM	CY	97	
606-B001	Guard Rail, Class A, Type 1	LF	650	

- ① INCLUDES 228 LF FOR SIDE DRAINS
- ② INCLUDES 96 LF FOR SIDE DRAINS
- ③ INCLUDES 139856 LBS FOR BOXES, 48 LBS FOR MINOR STRUCTURES AND 1189 LBS FOR DIRECTIONAL SIGN FOOTINGS.
- ④ INCLUDES 650 TON FOR DRIVEWAYS.
- ⑤ INCLUDES 20% INCREASE FROM CALCULATED QUANTITY.
- ⑥ INCLUDES 84 TON FOR DRIVEWAYS.
- ⑦ INCLUDES 63 TON FOR DRIVEWAYS.
- ⑧ INCLUDES 0.67 CY FOR INLETS, 1.03 CY FOR TOE WALLS, AND 1.2 FOR STANDARD SIGN FOOTINGS.



SM	ADDED PAY ITEM 403-A003	Revision	09/17/2021
DATE	DESIGN TEAM	CHECKED	DATE
	GARVER	JMB	SEPT. 2021
MISSISSIPPI DEPARTMENT OF TRANSPORTATION			
SUMMARY OF QUANTITIES			
			
PROJ NO: BR-0070-02(015)		Working Number	
COUNTY: QUITMAN		SQ-2	
FILENAME: SQ-1		Sheet Number	
		12	

ADDENDUM

DESCRIPTION OF SHEETS

WORKING NO(S).

SHEET NO(S).

BRIDGE A
DETAILED INDEX (BRIDGE)
SUMMARY OF QUANTITIES (BRIDGE ITEMS)
GENERAL NOTES
SR 6 OVER CASSIDY BAYOU LAYOUT
SR 6 OVER CASSIDY BAYOU FOUNDATION
END BENT DETAILS 1
END BENT DETAILS 2
INT. BENT 2 & 5 DETAILS
INT. BENT 2 & 5 DETAILS
INT. BENT 3 & 4 DETAILS
INT. BENT 3 & 4 DETAILS
SPAN DETAILS 1
110 FT. SPAN DETAILS
SPAN DETAILS 2
140 FT. SPAN DETAILS
MISCELLANEOUS DETAILS
110 FT. BEAM NO. 110-1 DETAILS (TYPE FIB-45)
110 FT. BEAM NO. 110-2 DETAILS (TYPE FIB-45)
110 FT. BEAM BEARING DETAILS
140 FT. BEAM NO. 140-1 DETAILS (TYPE FIB-63)
140 FT. BEAM BEARING DETAILS

BRIDGE B
GENERAL NOTES
SR 6 OVER COLDWATER RIVER LAYOUT 1
SR 6 OVER COLDWATER RIVER LAYOUT 2
SR 6 OVER COLDWATER RIVER FOUNDATION
END BENT DETAILS 1
END BENT DETAILS 2
INTERMEDIATE BENT DETAILS
INTERMEDIATE BENT DETAILS
COLUMN & DRILLED SHAFT DETAILS
TYPICAL SECTION
MISCELLANEOUS DETAILS
SPANS 1 & 3 DETAILS
SPAN 2 DETAILS
FRAMING DETAILS SPANS 1 & 3
FRAMING DETAILS SPAN 2
FIELD SPLICE DETAILS & CAMBER & DEFLECTION DETAILS
CROSSFRAME, SHEAR CONNECTOR & STIFFENER DETAILS
LATERAL BRACING DETAILS
MODULAR EXPANSION DEVICE DETAILS
SCUPPER DETAILS
DISC BEARING DETAILS 1
DISC BEARING DETAILS 2

GENERALIZED SOIL PROFILE
GENERALIZED SOIL PROFILE
GENERALIZED SOIL PROFILE
EMBANKMENT SETTLEMENT PLATE DETAILS
TRIAL SHAFT & LOAD TEST DETAIL
BRIDGE EROSION CONTROL PLANS
ELEVATION OF EROSION CONTROL
PLAN OF EROSION CONTROL
ELEVATION OF EROSION CONTROL
ELEVATION OF EROSION CONTROL
PLAN OF EROSION CONTROL
RAILING DETAILS
3'-6" RAILING DETAILS - BRIDGE A
3'-6" RAILING DETAILS - BRIDGE B
INFORMATION PLANS
INFORMATION PLANS
INFORMATION PLANS

DI-BR-1
SO-BR-1
A1
A2
A3
A4
A5
A6
A7
A8
A9
A10
A11
A12
A13
A14
A15
A16
A17
A18
A19

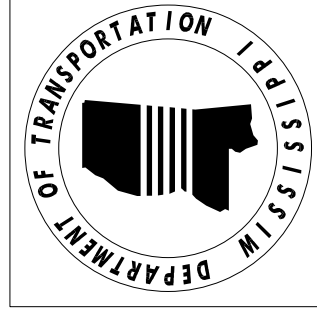
B1
B2
B3
B4
B5
B6
B7
B8
B9
B10
B11
B12
B13
B14
B15
B16
B17
B18
B19
B20
B21
B22

GSP-1A
GSP-1B
SPD-1C
GSP-2B
ECBR-1A
ECBR-2A
ECBR-1B
ECBR-2B
ECBR-3B
RD-42-A
RD-42-B

8001
8002
8003
8004
8005
8006
8007
8008
8009
8010
8011
8012
8013
8014
8015
8016
8017
8018
8019
8020
8021
8022
8023
8024
8025
8026
8027
8028
8029
8030
8031
8032
8033
8034
8035
8036
8037
8038
8039
8040
8041
8042
8043
8044
8045
8046
8047
8048
8049
8050
8051
8052
8053
8054
8055
8056

BRIDGE DIVISION		
REVISIONS		
DATE	SHEET NO.	BY
8-25-2021	8001,8002,8009, 8013,8017,8018, 8022,8028,8031, 8035,8036,8037, 8040,8046,8047, 8048,8049,8050, 8051,8052,8053, 8054,8055,8056	CJD
9-20-2021	8003,8030,8043	CJD

DATE	REVISION	BY
8-25-2021	Revised sheet numbers, added SPD-1C	CJD



MISSISSIPPI DEPARTMENT OF TRANSPORTATION

FMS: 102624 / 303000
COUNTY: OUITMAN
PROJECT NUMBER: BR-0070-02(015)

DESIGNER: Chris. Duncan
CHECKER: JLR
ISSUE DATE: 08-20-2021
DIRECTOR OF STRUCTURES: STATE ENGINEER
SUPERVISOR OF STRUCTURES: ASSIST. STATE ENGINEER - WIGHTMAN, P.E.

WORKING NUMBER
DI-BR-1
SHEET NUMBER
8001

DETAILED INDEX

ESTIMATED QUANTITIES

Item Location	Transverse Grooving	Conventional Static Pile Load Test	PDA Test Pile, Steel Pipe Pile	Pile Restrike	24" Steel Pipe Piling, Wall Thickness 0.500"	Bridge Concrete, Class AA	Bridge Concrete, Class BDX	Bridge Concrete, Class AA	110 Ft. Prefressed Concrete Beam, FIB-45	140 Ft. Prefressed Concrete Beam, FIB-45	Reinforcement, Corrosion Resistant	Concrete, Railings	Loose Riprap Size 300	Geotextile Under Riprap	Preformed Joint Seal Type I, Linear Foot	Preformed Joint Seal Type II, Linear Foot
Spans	2587.41					508.58	508.58		2624.50	837.00	201,181	1164.33			94.0	94.0
End bents		1	2	1	1350.0	75.62					9,482					
Int. bents			2	1	2365.0	101.76					15,932					
Totals	2587.41	1	4	2	3715.0	177.37	508.58	508.58	2624.50	837.00	226,595	1164.33	652.0	1351.0	94.0	94.0

GENERAL NOTES:

Specifications: Mississippi Standard Specifications for Road and Bridge Construction, 2017
 No change of plans will be permitted except by written approval of The Director of Structures, State Bridge Engineer. Minor changes in details of design or construction procedure may be authorized by the Director of Structures, State Bridge Engineer provided such changes will not be cause for contract price adjustment.
 The final surface texture of the bridge deck shall be mechanically transverse grooved in accordance with Sections 501 and 907-804 of the specifications. See misc. span details for limits of transverse grooving on bridge deck.
 Bridge concrete shall be class "AA" or class "BDX" unless noted otherwise.
 Railing expansion joint material shall be bituminous fiber type unless otherwise noted.
 No payment will be allowed for excavation incidental to the construction of end bents.
 Bar bending details shall be in accordance with Manual of Standard Practice for Detailing Reinforced Concrete Structures (ACI 318R-04).
 Reinforcement order lists and required placing plans shall be furnished in accordance with Section 805 of the Mississippi Standard Specifications. Partial submittals are not acceptable.
 Concrete surfaces shall receive a Class 2 rubbed or spray finish in accordance with the specifications.
 Reinforcing steel shall be A.S.T.M. A615, Grade 60, unless otherwise noted.
 Work for which no pay item is provided in the proposal will not be paid for directly and compensation therefore will be included in the prices and payments for bid items.

STEEL PIPE PILE NOTES:

PDA Test Piles shall be driven with an approved impact hammer as a production pile at the location shown in the PDA TEST PILE SCHEDULE and will be paid for as test piles only.
 Test piles shall be driven as a continuous operation, to the tip elevation shown in the PDA TEST PILE SCHEDULE, unless otherwise directed by the Director of Structures, State Bridge Engineer.
 Permanent piles shall be driven to an elevation no higher than the elevation shown in the REQUIRED ULTIMATE PILE BEARING CAPACITY AND TIP ELEVATION SCHEDULE.
 The Director of Structures, State Bridge Engineer may authorize Test Piles driven outside the structural limits.
 When feasible, bearing piles shall be driven full length and be spliced, only as approved by the Director of Structures, State Bridge Engineer.
 Welding shall be done by the ELECTRIC ARC process. Welders shall be certified and electrodes shall be approved.
 When loading tests are required, the maximum test load shall be one and one half (1½) times the minimum pile bearing capacity.
 PDA Test Piles shall require a 1 day restrike unless otherwise directed by the Engineer.
 Pile lengths and driving criteria shall be provided based on the results of the PDA Test Piles.
 The required ultimate pile bearing shown in the REQUIRED ULTIMATE PILE BEARING CAPACITY AND TIP ELEVATION SCHEDULE includes the LRPD resistance factor for PDA of 0.65.
 Pile hammer leads used for all PDA Test Piles, and PDA restrikes shall be large enough to provide a minimum of 3' clearance on each side of the pile in order to properly place and protect PDA gages.
 Steel pipe piles shall be driven with a maximum rated energy no less than 76,000 ft-lbs to the tip elevations specified unless the Contractor's drivability analysis utilizing the Contractor's selected alternative hammer is approved by the Director of Structures, State Bridge Engineer.
 All Steel Pipe Piles shall be ASTM A252, Grade 3 (Mod), Fy=50,000 psi.
 Steel Pipe Piles are intended to be open ended.
 Welding shall comply with AWS/AWS D1.5 Bridge Welding Code and be performed by a certified welder.
 The tip elevation of piling for hydraulic structures, may be determined by scour line but under no circumstances shall be greater than the minimum tip elevation shown in the REQUIRED ULTIMATE PILE BEARING CAPACITY.

NOTE:

For information plans, see Sheet No. 8055.

MINIMUM PILE BEARING CAPACITY AND TIP ELEVATION SCHEDULE

Bent No.	Required Ultimate Bearing (Tons)	Estimated Length (Ft.)	Minimum Tip Elevation
1	280	75	130.0
2	525	115	128.1
3	425	105	127.0
4	425	100	127.0
5	525	110	128.6
6	280	75	143.0

P.D.A TEST PILE SCHEDULE

Bent No.	Estimated Length (Ft.)	Minimum Tip Elevation
1	95	71.9
3	125	43.8
5	130	39.8
6	95	71.8

500 YEAR SCOUR ELEVATIONS

Bent No.	Elevation
1	150.0
2	148.1
3	147.0
4	147.0
5	148.6
6	163.0

STEEL PIPE PILE COATING NOTES:

Pipe piles shall receive a protective coating beginning at the bottom of the cap and extending to the 100 year scour elevation as shown on the Layou Sheet. The coating shall be one of the following, applied according to the manufacturer's specifications in two coats of 16 mil minimum dry film thickness:
 a. Bitumastic 300-M Coal Tar Epoxy manufactured by Carboline Company in St. Louis, MO www.carboline.com
 b. Corotech Coal Tar Epoxy manufactured by INSL-X Company in Montvale, NJ www.corotechcoatings.com
 c. Series 46-143 THEMEC-Tar manufactured by THEMEC Co. Inc. in Kansas City, MO www.themec.com

Any areas of coating above the ground line that become damaged during shipping or driving shall be repaired per the manufacturer's specifications. Any areas of coating affected by pipe pile splicing shall be repaired per the manufacturer's specification. Protective coating, including surface preparation and application, will be paid for as Steel Pipe Piling, not as a separate pay item.

DESIGN DATA:

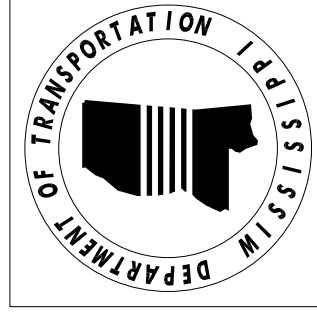
Specifications.....A.S.H.T.O. LRFD 2017, with 2018 Interims
 Deck Concrete.....Class "BDX" (4,500 psi)
 Concrete.....Class "AA" (4,000 psi)
 Reinforcing.....ASTM A 615 grade 60 (Fy = 60 ksi)
 Seismic Performance Zone.....2 (Fv = 2.38)
 Seismic Soil Site Class.....D
 Seismic Operational Class.....Rural Arterial

DRAINAGE DATA:

Drainage Area.....Relief
 OSO.....977 cfs
 Effective Area.....5932 sq. ft.

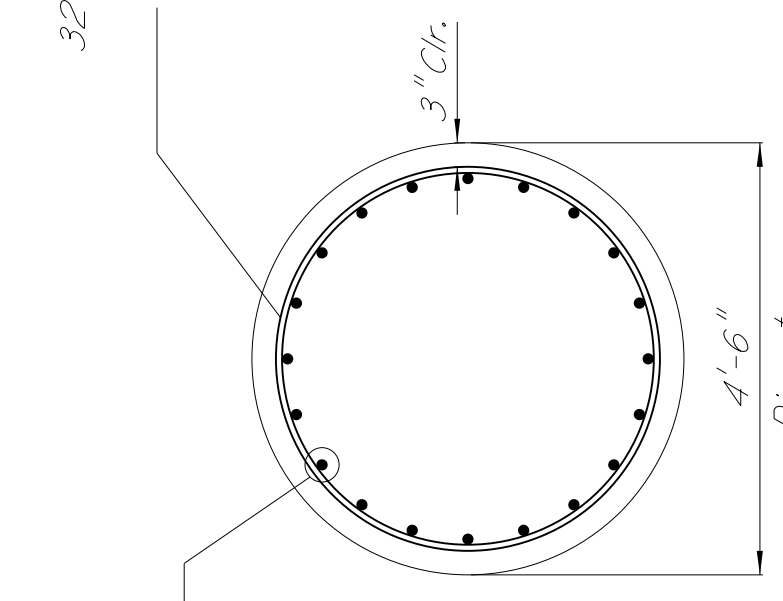
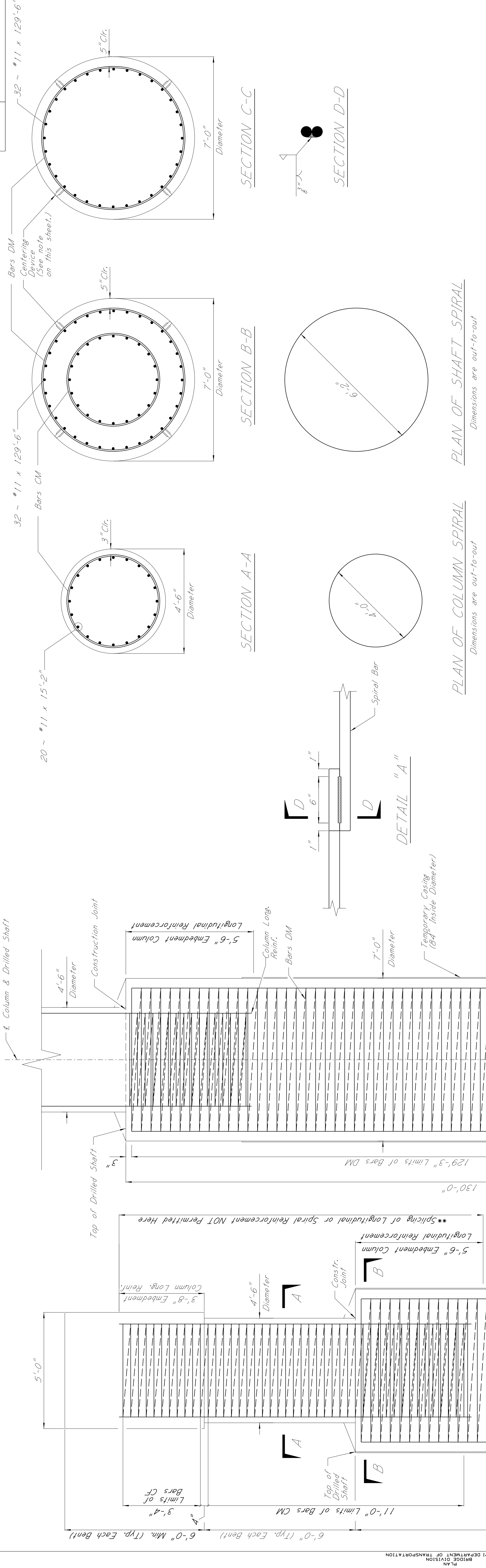
DATE	REVISION
9-20-2021	Added pile coating notes

MISSISSIPPI DEPARTMENT OF TRANSPORTATION
 BRIDGE AT STA. 844+69.92
 GENERAL NOTES
 FMS: 102624 / 303000
 COUNTY: OUITMAN
 PROJECT NUMBER: BR-0070-02(015)
 DESIGNER: Chris. Durand
 CHECKER: Stephen. Diaz
 ISSUED DATE: 02-20-2021
 DETAILER: Chris. Durand
 DIRECTOR OF STRUCTURES, STATE BRIDGE ENGINEER: W. MICHAEL P.E.
 BRIDGE ENGINEER: W. MICHAEL P.E.
 WORKING NUMBER
AI OF 19
 SHEET NUMBER
8003

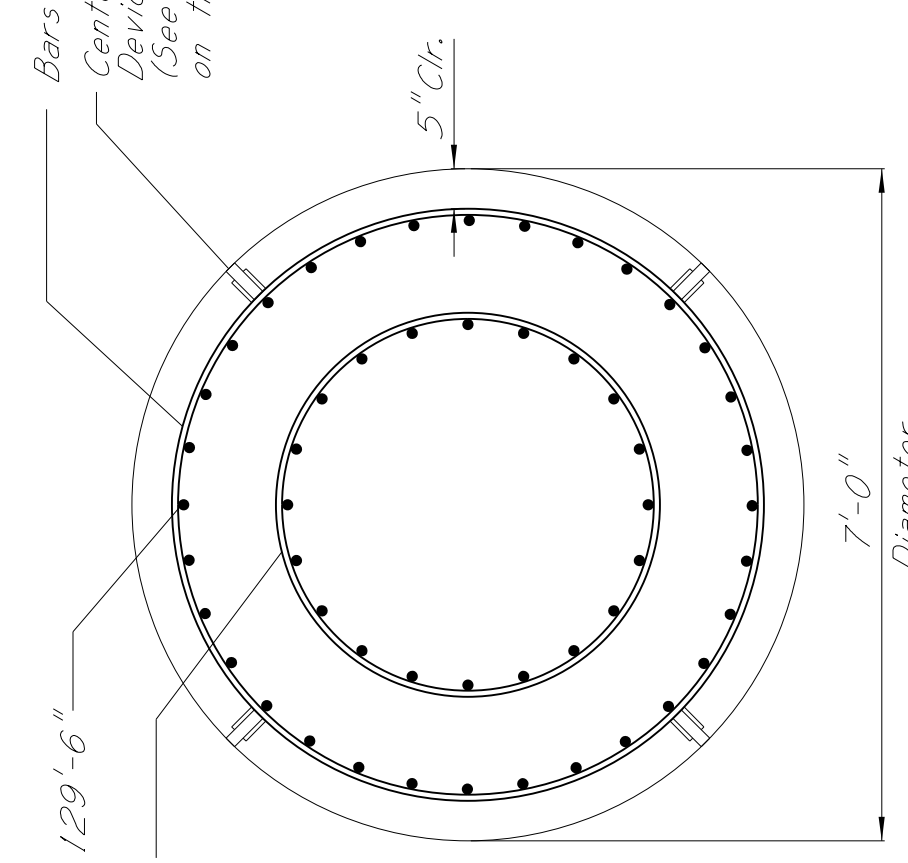


ADDENDUM

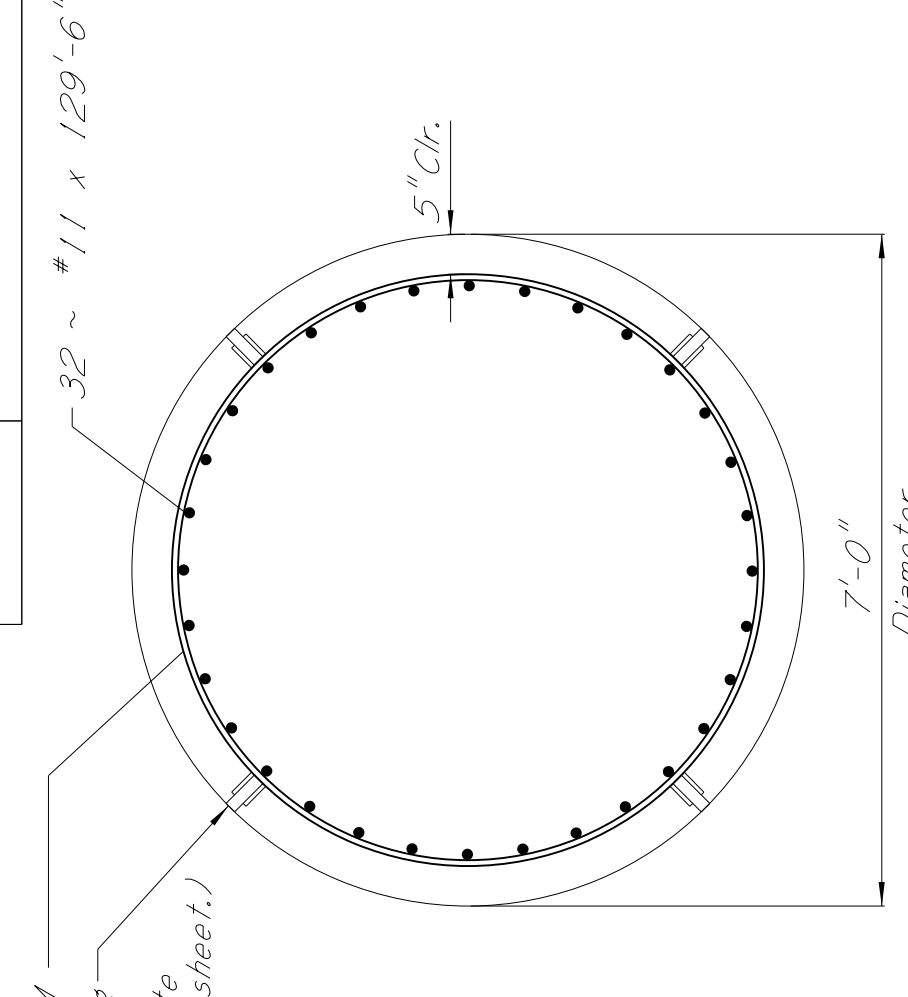
STATE	PROJECT NO.
MISS.	BR-0070-02(015)



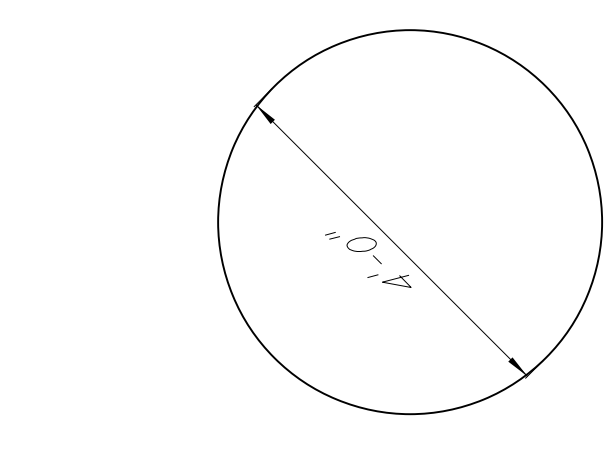
SECTION A-A



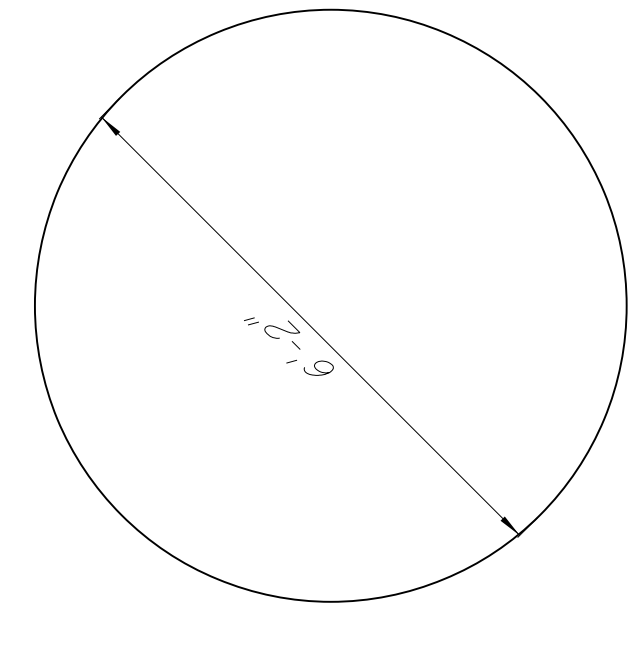
SECTION B-B



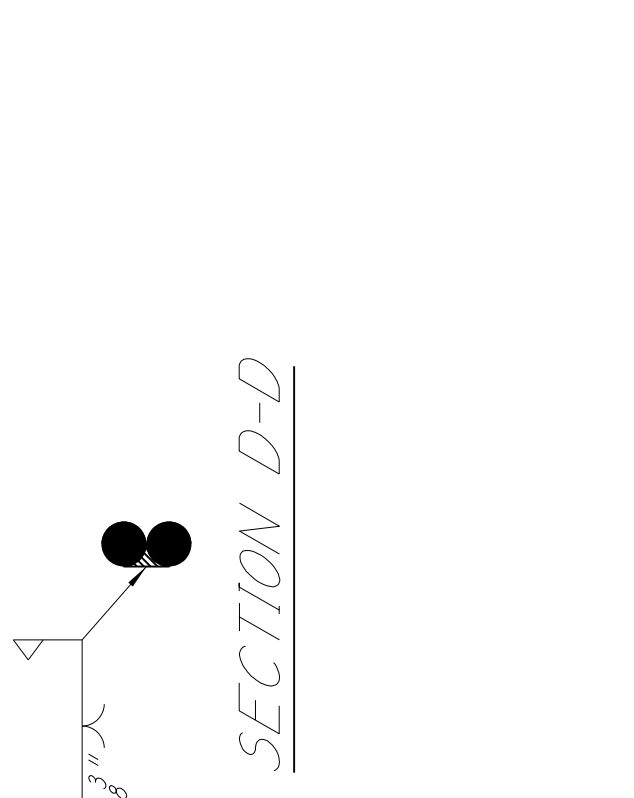
SECTION C-C



DETAIL "A"



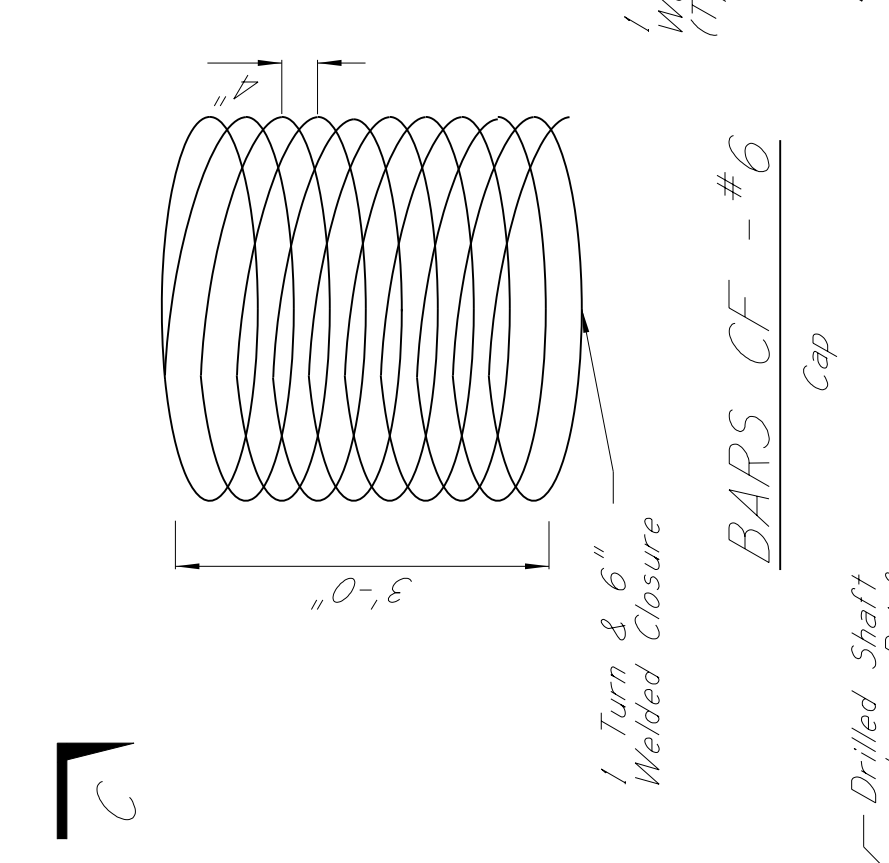
PLAN OF COLUMN SPIRAL



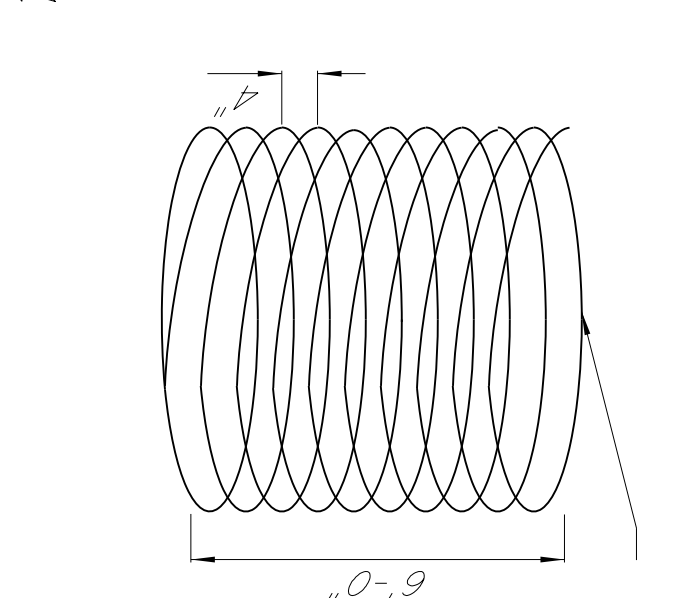
SECTION D-D

PLAN OF SHAFT SPIRAL

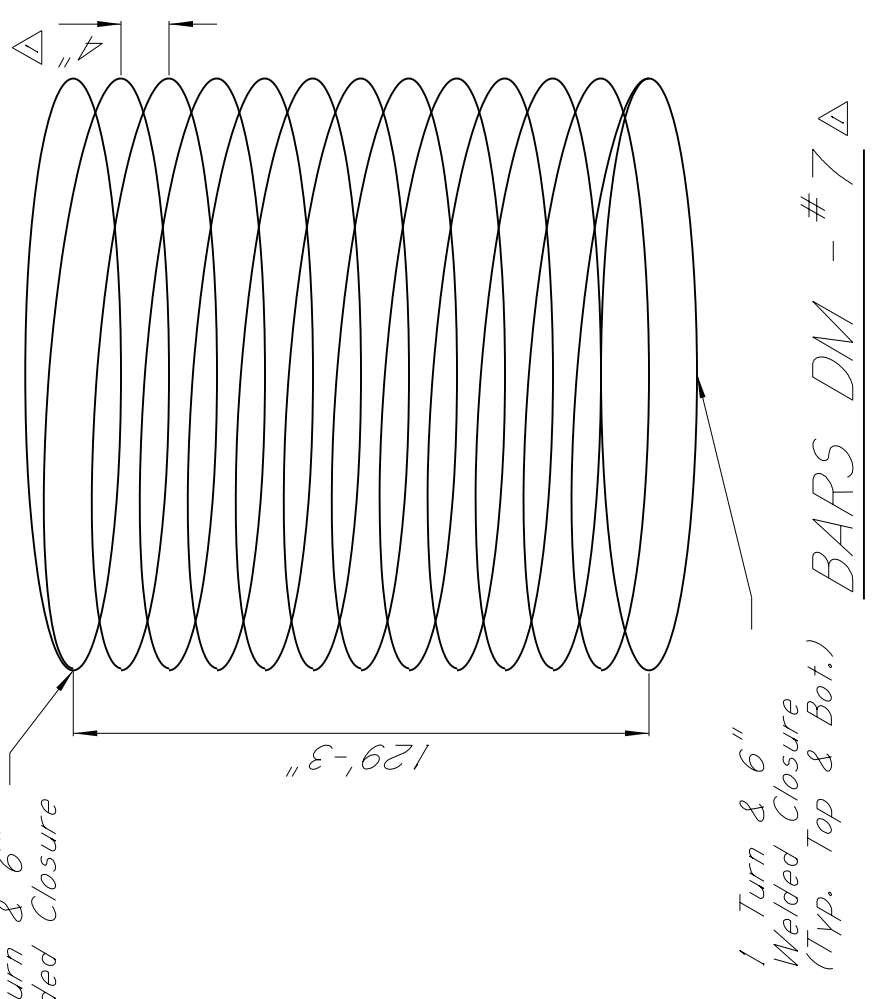
Dimensions are out-to-out



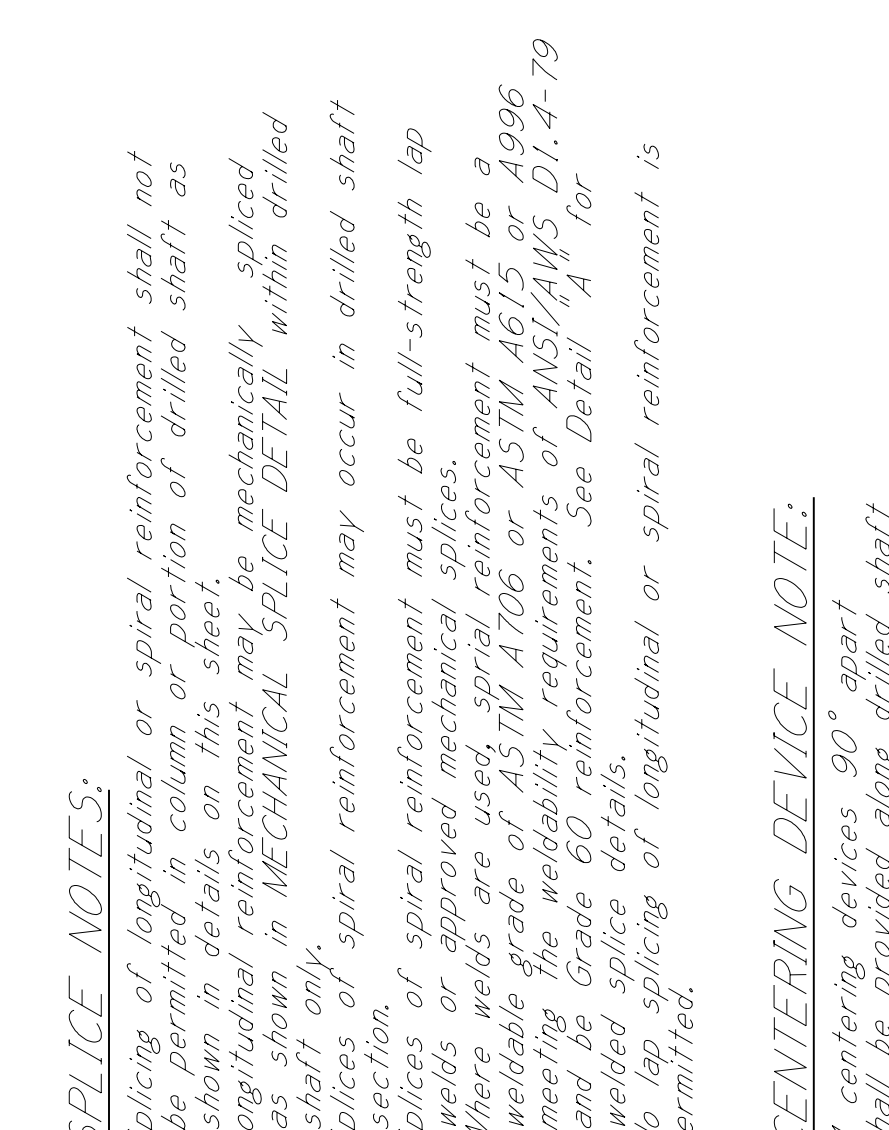
BARS CF - #6



BARS CM - #6



BARS DM - #7



MECHANICAL SPLICE NOTES:

- Mechanical splices shall alternate between adjacent lines of bundled longitudinal reinforcement, and shall be separated a minimum distance of 2'-0" vertically. See Mechanical Splice Detail. Mechanical splices shall be one of the following products or an approved equal:
 - "Grip-Twist" shall be as manufactured by Bar Splice Products, Inc. Dayton, OH.
 - "Bar-Lock" shall be as manufactured by DAYTON "SUPERIOR Dayton, OH.
 - "Lenton Standard Couplers" shall be as manufactured by ERICO of Solon, OH.
- All components of the mechanical splicing system shall be installed in strict accordance with the manufacturer's specifications.
- A representative of the manufacturer must be present for sufficient time to assure the Contractor is properly schooled in the installation of mechanical splices.
- It is the Contractor's responsibility to adjust the dimensions of reinforcing to the proper length according to what mechanical splice is used during construction.

COLUMN ELEVATION

SHAFT ELEVATION

NOTE:
 Shear keys, & Bars DM not shown for clarity.

NOTE:
 Temporary casing Tip Elevation = 130'-0"

SPLICE NOTES:
 Splicing of longitudinal or spiral reinforcement shall not be permitted in column or portion of drilled shaft as shown in details on this sheet, unless mechanically spliced as shown in MECHANICAL SPLICE DETAIL within drilled shaft only.
 Splices of spiral reinforcement may occur in drilled shaft section.
 Splices of spiral reinforcement must be full-strength lap welds or approved mechanical splices.
 Welds are to be made in accordance with ASTM A615 and meeting the weldability requirements of AWS/AWS D1.4-79 and splice details.
 No lap splicing of longitudinal or spiral reinforcement is permitted.

CENTERING DEVICE NOTE:

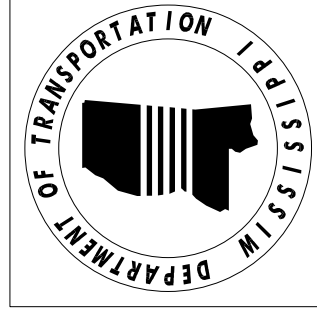
4 centering devices 90° apart shall be provided along drilled shaft at 10'-0" O.C.

NOTE:

Column reinforcement shall be paid for at the bid price of Pay Item No. 805-A001 Reinforcement.

DATE	REVISION
10-20-2021	Updated Bars DM
BY	CD

DESIGNER	CHICKENHEAD
DRAWN	W. W. WILSON
CHECKER	W. W. WILSON
ISSUE DATE	10-20-2021
PROJECT NO.	BR-0070-02(015)
COUNTY	QUITMAN
FMS	102624 / 303000
COLUMN & DRILLED SHAFT DETAILS	
BRIDGE AT STA. 882+71.0000	
MISSISSIPPI DEPARTMENT OF TRANSPORTATION	



WORKING NUMBER	B9 OF 22
SHEET NUMBER	8030

