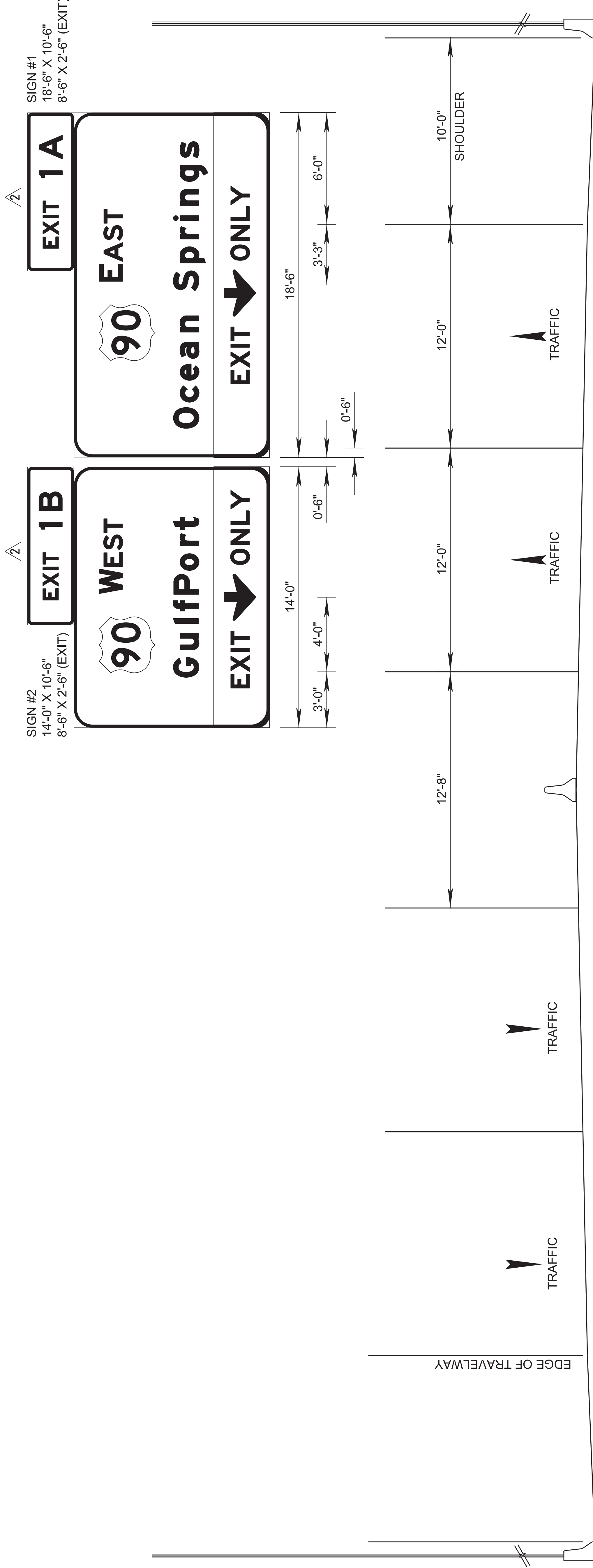


ADDENDUM

STATE PROJECT NO.
MISS. HSIP-0110-01(030)

FMS COM: 108488 / 301000

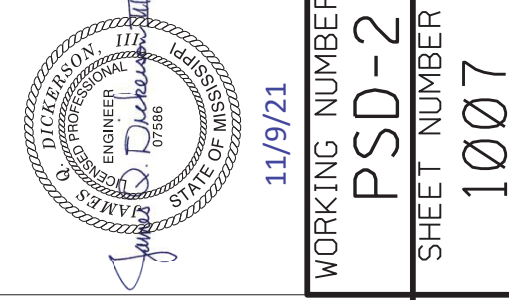


OVERHEAD ASSEMBLY "1"
STA. 10+00

NOTES:

- 1) CONTRACTOR DISPOSAL OF ALL MATERIALS SHALL BE PART OF REMOVAL PAY ITEM NO. 202-B215.
- 2) SEE WK. SHEET NO. PSD-1 FOR SIGN DETAILS.
- 3) THE METHOD FOR ATTACHING THE SIGNS AND SIGN PANELS TO THE OVERHEAD TRUSSES SHALL BE CONTRACTOR DESIGNED AND ABSORBED IN 630-A002 AND 630-B003.

MISSISSIPPI DEPARTMENT OF TRANSPORTATION	
PERMANENT SIGNING DETAIL	
BY	REVISION
GSM	REV. NOTE 1 PAY ITEM ADDED NOTE 3
GSM	SIGNS SWITCHED, UPDATED DIM.
DATE	11/9/21
FILENAME: PSD-2-SH.DGN	WORKING NUMBER PSD-2
DESIGN TEAM: burchart, horrochecked	SHEET NUMBER 1007
J.D.	DATE 11/7/09/21



COUNTY: HARRISON
PROJ. NUM.: HSIP-0110-01(030)
FILENAME: PSD-2-SH.DGN