

SECTION 905 -- PROPOSAL (CONTINUED)

I (We) hereby certify by digital signature and electronic submission via Bid Express of the Section 905 proposal below, that all certifications, disclosures and affidavits incorporated herein are deemed to be duly executed in the aggregate, fully enforceable and binding upon delivery of the bid proposal. I (We) further acknowledge that this certification shall not extend to the bid bond or alternate security which must be separately executed for the benefit of the Commission. This signature does not cure deficiencies in any required certifications, disclosures and/or affidavits. I (We) also acknowledge the right of the Commission to require full and final execution on any certification, disclosure or affidavit contained in the proposal at the Commission's election upon award. Failure to so execute at the Commission's request within the time allowed in the Standard Specifications for execution of all contract documents will result in forfeiture of the bid bond or alternate security.

Bidder acknowledges receipt of and has added to and made a part of the proposal and contract documents the following addendum (addenda):

ADDENDUM NO. <u> 1 </u>	DATED <u> 11/16/2022 </u>	ADDENDUM NO. <u> </u>	DATED <u> </u>
ADDENDUM NO. <u> </u>	DATED <u> </u>	ADDENDUM NO. <u> </u>	DATED <u> </u>
ADDENDUM NO. <u> </u>	DATED <u> </u>	ADDENDUM NO. <u> </u>	DATED <u> </u>

Number	Description
1	Revised SP No. 907-618-4 with Supplement; Amendment EBSx Download Required.

TOTAL ADDENDA: 1
 (Must agree with total addenda issued prior to opening of bids)

Respectfully Submitted,

DATE _____

 Contractor

BY _____
 Signature

TITLE _____

ADDRESS _____

CITY, STATE, ZIP _____

PHONE _____

FAX _____

E-MAIL _____

(To be filled in if a corporation)

Our corporation is chartered under the Laws of the State of _____ and the names, titles and business addresses of the executives are as follows:

 President Address

 Secretary Address

 Treasurer Address

The following is my (our) itemized proposal.

NHPP-0015-02(130)/ 108936301000 & MP-6084-34(011)/ 307890301000

Jones County(ies)

Revised 01/26/2016

MISSISSIPPI DEPARTMENT OF TRANSPORTATION

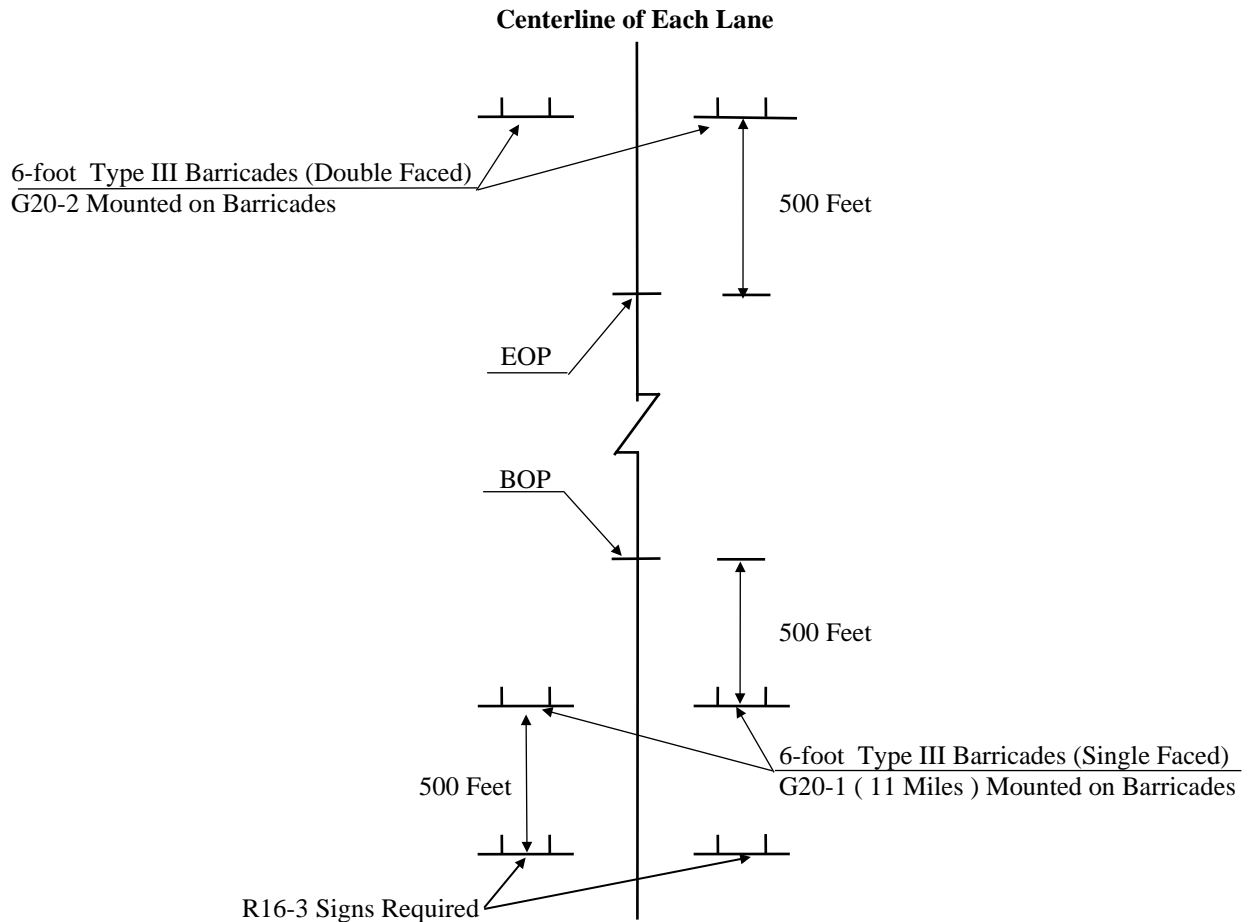
SUPPLEMENT TO SPECIAL PROVISION NO. 907-618-4

DATE: 11/16/2022

PROJECT: NHPP-0015-02(130) / 108936301
MP-6084-34(011) / 307890301 – Jones County

After the first paragraph of Subsection 907-618.01.2 on page 1, add the following.

Additional traffic control devices will be required as follows.

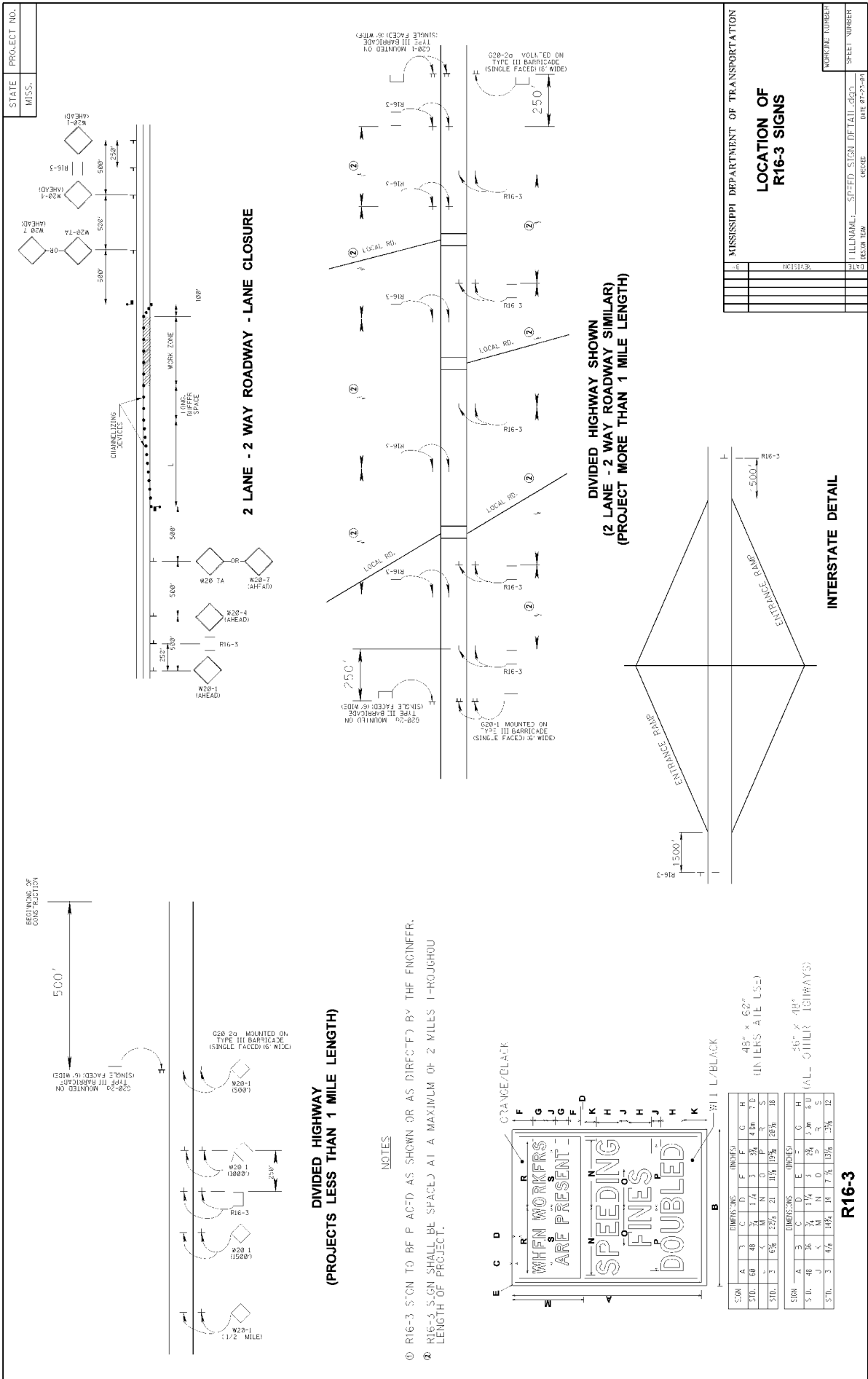


ADDITIONAL TRAFFIC CONTROL SIGNS REQUIRED:

- 45 - W20-1 "AHEAD" signs required. One (1) sign is required at each local road or street entering the project.
- 28 - R16-3 "SPEEDING FINES DOUBLED" signs required.

R16-3 signs shall be spaced in accordance with sheet titled "Location of R16-3 Signs".

All construction signs and barricades shown on this page shall be included in the bid price for Pay Item 618-A, Maintenance of Traffic. Fluorescent orange sheeting shall be used on all construction and traffic control signs except for R16-3 which shall be black legend and border on white background.



STATE	PROJECT NO.
MISS.	

DATE	BY	CHECKED	DATE
07-27-94			

PROJECT NAME	DATE
LOCATION OF R16-3 SIGNS	07-27-94

PROJECT NO.	DATE

PROJECT NAME	DATE
LOCATION OF R16-3 SIGNS	07-27-94

PROJECT NO.	DATE

PROJECT NAME	DATE
LOCATION OF R16-3 SIGNS	07-27-94

PROJECT NO.	DATE

PROJECT NAME	DATE
LOCATION OF R16-3 SIGNS	07-27-94

PROJECT NO.	DATE

PROJECT NAME	DATE
LOCATION OF R16-3 SIGNS	07-27-94

REQUIREMENTS OF CONSTRUCTION

500'

G28-29 MOUNTED ON TYPE III BARRICADE (SINGLE FACED) (6" WIDE)

W20-1 (1/2 MILE)

W20-2 (1/2 MILE)

W20-3 (1/2 MILE)

W20-4 (1/2 MILE)

W20-5 (1/2 MILE)

W20-6 (1/2 MILE)

W20-7 (1/2 MILE)

W20-8 (1/2 MILE)

W20-9 (1/2 MILE)

W20-10 (1/2 MILE)

W20-11 (1/2 MILE)

W20-12 (1/2 MILE)

W20-13 (1/2 MILE)

W20-14 (1/2 MILE)

W20-15 (1/2 MILE)

W20-16 (1/2 MILE)

W20-17 (1/2 MILE)

W20-18 (1/2 MILE)

W20-19 (1/2 MILE)

W20-20 (1/2 MILE)

W20-21 (1/2 MILE)

W20-22 (1/2 MILE)

W20-23 (1/2 MILE)

W20-24 (1/2 MILE)

W20-25 (1/2 MILE)

W20-26 (1/2 MILE)

W20-27 (1/2 MILE)

W20-28 (1/2 MILE)

W20-29 (1/2 MILE)

W20-30 (1/2 MILE)

W20-31 (1/2 MILE)

W20-32 (1/2 MILE)

W20-33 (1/2 MILE)

W20-34 (1/2 MILE)

W20-35 (1/2 MILE)

W20-36 (1/2 MILE)

W20-37 (1/2 MILE)

W20-38 (1/2 MILE)

W20-39 (1/2 MILE)

W20-40 (1/2 MILE)

W20-41 (1/2 MILE)

W20-42 (1/2 MILE)

W20-43 (1/2 MILE)

W20-44 (1/2 MILE)

W20-45 (1/2 MILE)

W20-46 (1/2 MILE)

W20-47 (1/2 MILE)

W20-48 (1/2 MILE)

W20-49 (1/2 MILE)

W20-50 (1/2 MILE)

W20-51 (1/2 MILE)

W20-52 (1/2 MILE)

W20-53 (1/2 MILE)

W20-54 (1/2 MILE)

W20-55 (1/2 MILE)

W20-56 (1/2 MILE)

W20-57 (1/2 MILE)

W20-58 (1/2 MILE)

W20-59 (1/2 MILE)

W20-60 (1/2 MILE)

W20-61 (1/2 MILE)

W20-62 (1/2 MILE)

W20-63 (1/2 MILE)

W20-64 (1/2 MILE)

W20-65 (1/2 MILE)

W20-66 (1/2 MILE)

W20-67 (1/2 MILE)

W20-68 (1/2 MILE)

W20-69 (1/2 MILE)

W20-70 (1/2 MILE)

W20-71 (1/2 MILE)

W20-72 (1/2 MILE)

W20-73 (1/2 MILE)

W20-74 (1/2 MILE)

W20-75 (1/2 MILE)

W20-76 (1/2 MILE)

W20-77 (1/2 MILE)

W20-78 (1/2 MILE)

W20-79 (1/2 MILE)

W20-80 (1/2 MILE)

W20-81 (1/2 MILE)

W20-82 (1/2 MILE)

W20-83 (1/2 MILE)

W20-84 (1/2 MILE)

W20-85 (1/2 MILE)

W20-86 (1/2 MILE)

W20-87 (1/2 MILE)

W20-88 (1/2 MILE)

W20-89 (1/2 MILE)

W20-90 (1/2 MILE)

W20-91 (1/2 MILE)

W20-92 (1/2 MILE)

W20-93 (1/2 MILE)

W20-94 (1/2 MILE)

W20-95 (1/2 MILE)

W20-96 (1/2 MILE)

W20-97 (1/2 MILE)

W20-98 (1/2 MILE)

W20-99 (1/2 MILE)

W20-100 (1/2 MILE)

W20-101 (1/2 MILE)

W20-102 (1/2 MILE)

W20-103 (1/2 MILE)

W20-104 (1/2 MILE)

W20-105 (1/2 MILE)

W20-106 (1/2 MILE)

W20-107 (1/2 MILE)

W20-108 (1/2 MILE)

W20-109 (1/2 MILE)

W20-110 (1/2 MILE)

W20-111 (1/2 MILE)

W20-112 (1/2 MILE)

W20-113 (1/2 MILE)

W20-114 (1/2 MILE)

W20-115 (1/2 MILE)

W20-116 (1/2 MILE)

W20-117 (1/2 MILE)

W20-118 (1/2 MILE)

W20-119 (1/2 MILE)

W20-120 (1/2 MILE)

W20-121 (1/2 MILE)

W20-122 (1/2 MILE)

W20-123 (1/2 MILE)

W20-124 (1/2 MILE)

W20-125 (1/2 MILE)

W20-126 (1/2 MILE)

W20-127 (1/2 MILE)

W20-128 (1/2 MILE)

W20-129 (1/2 MILE)

W20-130 (1/2 MILE)

W20-131 (1/2 MILE)

W20-132 (1/2 MILE)

W20-133 (1/2 MILE)

W20-134 (1/2 MILE)

W20-135 (1/2 MILE)

W20-136 (1/2 MILE)

W20-137 (1/2 MILE)

W20-138 (1/2 MILE)

W20-139 (1/2 MILE)

W20-140 (1/2 MILE)

W20-141 (1/2 MILE)

W20-142 (1/2 MILE)

W20-143 (1/2 MILE)

W20-144 (1/2 MILE)

W20-145 (1/2 MILE)

W20-146 (1/2 MILE)

W20-147 (1/2 MILE)

W20-148 (1/2 MILE)

W20-149 (1/2 MILE)

W20-150 (1/2 MILE)

W20-151 (1/2 MILE)

W20-152 (1/2 MILE)

W20-153 (1/2 MILE)

W20-154 (1/2 MILE)

W20-155 (1/2 MILE)

W20-156 (1/2 MILE)

W20-157 (1/2 MILE)

W20-158 (1/2 MILE)

W20-159 (1/2 MILE)

W20-160 (1/2 MILE)

W20-161 (1/2 MILE)

W20-162 (1/2 MILE)

W20-163 (1/2 MILE)

W20-164 (1/2 MILE)

W20-165 (1/2 MILE)

W20-166 (1/2 MILE)

W20-167 (1/2 MILE)

W20-168 (1/2 MILE)

W20-169 (1/2 MILE)

W20-170 (1/2 MILE)

W20-171 (1/2 MILE)

W20-172 (1/2 MILE)

W20-173 (1/2 MILE)

W20-174 (1/2 MILE)

W20-175 (1/2 MILE)

W20-176 (1/2 MILE)

W20-177 (1/2 MILE)

W20-178 (1/2 MILE)

W20-179 (1/2 MILE)

W20-180 (1/2 MILE)

W20-181 (1/2 MILE)

W20-182 (1/2 MILE)

W20-183 (1/2 MILE)

W20-184 (1/2 MILE)

W20-185 (1/2 MILE)

W20-186 (1/2 MILE)

W20-187 (1/2 MILE)

W20-188 (1/2 MILE)

W20-189 (1/2 MILE)

W20-190 (1/2 MILE)

W20-191 (1/2 MILE)

W20-192 (1/2 MILE)

W20-193 (1/2 MILE)

W20-194 (1/2 MILE)

W20-195 (1/2 MILE)

W20-196 (1/2 MILE)

W20-197 (1/2 MILE)

W20-198 (1/2 MILE)

W20-199 (1/2 MILE)

W20-200 (1/2 MILE)

W20-201 (1/2 MILE)

W20-202 (1/2 MILE)

W20-203 (1/2 MILE)

W20-204 (1/2 MILE)

W20-205 (1/2 MILE)

W20-206 (1/2 MILE)

W20-207 (1/2 MILE)

W20-208 (1/2 MILE)

W20-209 (1/2 MILE)

W20-210 (1/2 MILE)

W20-211 (1/2 MILE)

W20-212 (1/2 MILE)

W20-213 (1/2 MILE)

W20-214 (1/2 MILE)

W20-215 (1/2 MILE)

W20-216 (1/2 MILE)

W20-217 (1/2 MILE)

W20-218 (1/2 MILE)

W20-219 (1/2 MILE)

W20-220 (1/2 MILE)

W20-221 (1/2 MILE)

W20-222 (1/2 MILE)