

**SECTION 905 -- PROPOSAL (CONTINUED)**

I (We) hereby certify by digital signature and electronic submission via Bid Express of the Section 905 proposal below, that all certifications, disclosures and affidavits incorporated herein are deemed to be duly executed in the aggregate, fully enforceable and binding upon delivery of the bid proposal. I (We) further acknowledge that this certification shall not extend to the bid bond or alternate security which must be separately executed for the benefit of the Commission. This signature does not cure deficiencies in any required certifications, disclosures and/or affidavits. I (We) also acknowledge the right of the Commission to require full and final execution on any certification, disclosure or affidavit contained in the proposal at the Commission's election upon award. Failure to so execute at the Commission's request within the time allowed in the Standard Specifications for execution of all contract documents will result in forfeiture of the bid bond or alternate security.

Bidder acknowledges receipt of and has added to and made a part of the proposal and contract documents the following addendum (addenda):

ADDENDUM NO. <u>  1  </u>	DATED <u>  1/18/2024  </u>	ADDENDUM NO. <u>          </u>	DATED <u>          </u>
ADDENDUM NO. <u>  2  </u>	DATED <u>  1/23/2024  </u>	ADDENDUM NO. <u>          </u>	DATED <u>          </u>
ADDENDUM NO. <u>  3  </u>	DATED <u>  1/24/2024  </u>	ADDENDUM NO. <u>          </u>	DATED <u>          </u>

Number	Description
1	Revised Wage Rates; Revised Bid Items; Revised or Added Plan Sheet Nos. 2, 8, 14, 17, 19, 22, 8001-8004, 8006, 8006.1 & 8013; Amendment EBSx Download Required.
2	Postponed til January 31, 2024; Amendment EBSx Download Required.
3	Revised Advertisement; Revised Bid Items; Revised or Added Plan Sheet Nos. 2, 8, 14 & 19; Amendment EBSx Download Required.

TOTAL ADDENDA:   3    
(Must agree with total addenda issued prior to opening of bids)

Respectfully Submitted,  
 DATE \_\_\_\_\_  
 \_\_\_\_\_  
 Contractor  
 BY \_\_\_\_\_  
 Signature  
 TITLE \_\_\_\_\_  
 ADDRESS \_\_\_\_\_  
 CITY, STATE, ZIP \_\_\_\_\_  
 PHONE \_\_\_\_\_  
 FAX \_\_\_\_\_  
 E-MAIL \_\_\_\_\_

(To be filled in if a corporation)

Our corporation is chartered under the Laws of the State of \_\_\_\_\_ and the names, titles and business addresses of the executives are as follows:

_____	President	Address
_____	Secretary	Address
_____	Treasurer	Address

The following is my (our) itemized proposal.

STP-2901-00(036)/ 105338302000

Yalobusha County(ies)

Revised 01/26/2016

# MISSISSIPPI DEPARTMENT OF TRANSPORTATION

## SECTION 901 - ADVERTISEMENT

Electronic bids will be received by the Mississippi Transportation Commission at 10:00 o'clock A.M., Wednesday, January 31, 2024, from the Bid Express Service and shortly thereafter publicly read in the Construction Division for:

Bridge Replacement on US 51 at the Yocona River (Bridge No. 237.5), known as Federal Aid Project No. STP-2901-00(036) / 105338302 in Yalobusha County.

The attention of bidders is directed to the Contract Provisions governing selection and employment of labor. Minimum wage rates have been predetermined by the Secretary of Labor and are subject to Public Law 87-581, Work Hours Act of 1962, as set forth in the Contract Provisions.

The Mississippi Department of Transportation hereby notifies all bidders that it will affirmatively insure that in any contract entered into pursuant to this advertisement, disadvantaged business enterprises will be afforded full opportunity to submit bids in response to this invitation and will not be discriminated against on the grounds of race, color, sex, age, disability, religion or national origin in consideration for an award.

**The award of this contract will be contingent upon the Contractor satisfying the DBE requirements.**

Contractors may request permission to bid online at <http://shop.mdot.ms.gov> at no cost. Upon approval, Contractors shall be eligible to submit a bid using Bid Express at <http://bidx.com>. Specimen proposals may be viewed and downloaded online at no cost at <http://mdot.ms.gov> or purchased online at <http://shop.mdot.ms.gov> at a cost of Ten Dollars (\$10.00) per proposal plus a small convenience fee. Cash or checks will not be accepted as payment.

Plans must be purchased online at <<https://shop.mdot.ms.gov>>. Costs of plans will be on a per sheet basis plus a small convenience fee. If you have any questions, you can contact the MDOT Plans Print Shop at (601) 359-7460, or e-mail at [plans@mdot.state.ms.us](mailto:plans@mdot.state.ms.us). Plans will be shipped upon receipt of payment. Cash or checks will not be accepted as payment.

Bid bond, signed or countersigned by a Mississippi Agent or Qualified Nonresident Agent, with Power of Attorney attached, a Cashier's check or Certified Check for five (5%) percent of bid, payable to STATE OF MISSISSIPPI, must accompany each proposal.

The attention of bidders is directed to the provisions of Subsection 102.07 pertaining to irregular proposals and rejection of bids.

BRAD WHITE  
EXECUTIVE DIRECTOR

Bridge Replacement on US 51 at the Yocona River (Bridge No. 237.5), known as Federal Aid Project No. STP-2901-00(036) / 105338302 in Yalobusha County.

Line No.	Item Code	Adj Code	Quantity	Units	Description [Fixed Unit Price]
<b>Roadway Items</b>					
0010	201-A001		1	Lump Sum	Clearing and Grubbing
0020	202-B023		1	Each	Removal of Bridge
0030	202-B136		580	Linear Feet	Removal of Guard Rail
0040	202-B188		996	Square Yard	Removal of Pavement, All Types and Depths
0050	202-B191		190	Linear Feet	Removal of Pipe, 8" And Above
0052	203-A001	(E)	39,430	Cubic Yard	Unclassified Excavation, FM, AH
0060	203-EX020	(E)	18,111	Cubic Yard	Borrow Excavation, AH, FME, Class B9
0080	203-G001	(E)	2,500	Cubic Yard	Excess Excavation, FM, AH
0090	206-A001	(S)	1,828	Cubic Yard	Structure Excavation
0100	206-B001	(E)	199	Cubic Yard	Select Material for Undercuts, Contractor Furnished, FM
0110	209-A005		4,747	Square Yard	Geotextile Stabilization, Type V, Non-Woven
0120	213-C001		6	Ton	Superphosphate
0130	216-A001		127	Square Yard	Solid Sodding
0140	217-A001		1,689	Square Yard	Ditch Liner
0150	219-A001		3	Thousand Gallon	Watering [\$20.00]
0160	220-A001		6	Acre	Insect Pest Control [\$30.00]
0170	221-A001	(S)	17	Cubic Yard	Concrete Paved Ditch
0180	225-A001		12	Acre	Grassing
0190	225-B001		36	Ton	Agricultural Limestone
0200	225-C001		24	Ton	Mulch, Vegetative Mulch
0210	226-A001		12	Acre	Temporary Grassing
0220	235-A001		38	Each	Temporary Erosion Checks
0230	236-A008		2	Each	Silt Basin, Type D
0240	237-A002		188	Linear Feet	Wattles, 20"
0250	239-A001		100	Linear Feet	Temporary Slope Drains
0260	245-A001		188	Linear Feet	Silt Dike
0270	246-A001		375	Linear Feet	Sandbags
0280	247-A001		1	Each	Temporary Stream Diversion
0290	249-A001		54	Ton	Riprap for Erosion Control
0300	304-B004	(GT)	1,450	Ton	Granular Material, Class 5, Group D
0310	403-A003	(BA1)	628	Ton	12.5-mm, ST, Asphalt Pavement
0320	403-A006	(BA1)	571	Ton	19-mm, ST, Asphalt Pavement

Line No.	Item Code	Adj Code	Quantity	Units	Description [Fixed Unit Price]
0330	403-A015	(BA1)	471	Ton	9.5-mm, ST, Asphalt Pavement
0340	406-D001		1,100	Square Yard	Fine Milling of Bituminous Pavement, All Depths
0350	407-A001	(A2)	739	Gallon	Asphalt for Tack Coat
0360	423-A001		1	Mile	Rumble Strips, Ground In
0370	501-K001		24	Square Yard	Transverse Grooving
0380	502-A001	(C)	167	Square Yard	Reinforced Cement Concrete Bridge End Pavement
0390	601-A001	(S)	588	Cubic Yard	Class "B" Structural Concrete
0400	602-A001	(S)	97,128	Pounds	Reinforcing Steel
0410	603-ALT003	(S)	56	Linear Feet	18" Type A Alternate Pipe
0420	605-AA001	(S)	55	Square Yard	Geotextile for Subsurface Drainage, Type III
0430	605-O002	(S)	98	Linear Feet	4" Perforated Sewer Pipe for Underdrains, SDR 23.5
0440	605-P002	(S)	10	Linear Feet	4" Non-perforated Sewer Pipe for Underdrains, SDR 23.5
0450	605-W001	(GY)	4	Cubic Yard	Filter Material for Combination Storm Drain and/or Underdrains, Type A, FM
0460	606-B001		225	Linear Feet	Guard Rail, Class A, Type 1
0470	606-D022		4	Each	Guard Rail, Bridge End Section, Type I
0480	606-E005		4	Each	Guard Rail, Terminal End Section, Flared
0490	615-A024	(S)	40	Linear Feet	Concrete Bridge End Barrier, 37.5"
0500	617-A001		26	Each	Right-of-Way Marker
0510	618-A001		1	Lump Sum	Maintenance of Traffic
0520	618-B001		1	Square Feet	Additional Construction Signs [\$10.00]
0530	619-A1002		4,700	Linear Feet	Temporary Traffic Stripe, Continuous White
0540	619-A2002		2,051	Linear Feet	Temporary Traffic Stripe, Continuous Yellow
0550	619-A4001		2,180	Linear Feet	Temporary Traffic Stripe, Skip Yellow
0560	619-D2001		227	Square Feet	Standard Roadside Construction Signs, 10 Square Feet or More
0570	619-G4001		72	Linear Feet	Barricades, Type III, Double Faced
0580	619-G7001		10	Each	Warning Lights, Type "B"
0590	620-A001		1	Lump Sum	Mobilization
0600	626-C001		4,700	Linear Feet	6" Thermoplastic Double Drop Edge Stripe, Continuous White
0610	626-D002		2,180	Linear Feet	6" Thermoplastic Double Drop Traffic Stripe, Skip Yellow
0620	626-E002		2,051	Linear Feet	6" Thermoplastic Double Drop Traffic Stripe, Continuous Yellow
0630	627-L001		30	Each	Two-Way Yellow Reflective High Performance Raised Markers
0640	630-A003		18	Square Feet	Standard Roadside Signs, Sheet Aluminum, 0.125" Thickness
0650	630-C005		28	Linear Feet	Square Tube Posts, 2.0 lb/ft
0660	630-F006		16	Each	Delineators, Guard Rail, White

Line No.	Item Code	Adj Code	Quantity	Units	Description [Fixed Unit Price]
0670	630-G005		4	Each	Type 3 Object Markers, OM-3R or OM-3L, Post Mounted
0680	699-A001		1	Lump Sum	Roadway Construction Stakes
0690	815-A007	(S)	1,200	Ton	Loose Riprap, Size 300
0700	815-A009	(S)	900	Ton	Loose Riprap, Size 500
0710	815-E001	(S)	1,800	Square Yard	Geotextile under Riprap
0720	815-F002	(S)	66	Ton	Sediment Control Stone
0730	907-234-A001		2,868	Linear Feet	Temporary Silt Fence
0740	907-234-C001		418	Linear Feet	Super Silt Fence
0750	907-253-A001		204	Linear Feet	Coir Fiber Baffle
0760	907-413-E001		78	Linear Feet	Sawing and Sealing Transverse Joints in Asphalt Pavement
0770	907-619-E3001		2	Each	Changeable Message Sign
0780	907-906001		1,040	Hours	Trainees [\$5.00]
<b>ALTERNATE GROUP AA NUMBER 1</b>					
0790	304-F001	(GT)	2,100	Ton	3/4" and Down Crushed Stone Base
<b>ALTERNATE GROUP AA NUMBER 2</b>					
0800	304-F002	(GT)	2,100	Ton	Size 610 Crushed Stone Base
<b>ALTERNATE GROUP AA NUMBER 3</b>					
0810	304-F003	(GT)	2,100	Ton	Size 825B Crushed Stone Base
<b>ALTERNATE GROUP BB NUMBER 1</b>					
0820	605-W002	(GY)	37	Cubic Yard	Filter Material for Combination Storm Drain and/or Underdrains, Type B, FM
<b>ALTERNATE GROUP BB NUMBER 2</b>					
0830	605-W003	(GY)	37	Cubic Yard	Filter Material for Combination Storm Drain and/or Underdrains, Type C, FM
<b>Bridge Items</b>					
0840	501-K001		2,372	Square Yard	Transverse Grooving
0850	803-K010	(S)	960	Linear Feet	Drilled Shaft, 72" Diameter
0860	803-L006	(S)	1	Each	Test Shaft, 72" Diameter
0870	803-M009	(S)	125	Linear Feet	Trial Shaft, 72" Diameter
0880	803-N001	(S)	80	Linear Feet	Exploration
0890	803-O011	(S)	420	Linear Feet	Permanent Casing, 72" Diameter
0900	803-P003	(S)	1,800	Linear Feet	30" Steel Pipe Piling, Wall Thickness 0.500"
0910	804-C256	(S)	2,485	Linear Feet	125' Prestressed Concrete Beam, Type FIB-54
0920	804-C263	(S)	821	Linear Feet	165' Prestressed Concrete Beam, Type FIB-72
0930	805-A001	(S)	233,491	Pounds	Reinforcement
0940	805-C001	(S)	5,480	Pounds	Reinforcement, Corrosion Resistant

<b>Line No.</b>	<b>Item Code</b>	<b>Adj Code</b>	<b>Quantity</b>	<b>Units</b>	<b>Description [Fixed Unit Price]</b>
0950	813-A004	(S)	1,334	Linear Feet	Concrete Railing, 36"
0960	815-A007	(S)	4,102	Ton	Loose Riprap, Size 300
0970	815-E001	(S)	2,410	Square Yard	Geotextile under Riprap
0980	907-803-B001	(S)	1	Each	Conventional Static Pile Load Test [\$5,000.00]
0990	907-803-I004	(S)	3	Each	PDA Test Pile, Steel Pipe Pile
1000	907-803-J001	(S)	3	Each	Pile Restrike
1010	907-804-A001	(S)	748	Cubic Yard	Bridge Concrete, Class BDx
1020	907-804-A002	(S)	360	Cubic Yard	Bridge Concrete, Class AA
1030	907-823-A002		73	Linear Feet	Preformed Joint Seal, Type II

**ADDENDUM**

DESCRIPTION OF SHEET

TITLE (1)

TITLE

INDEX (2)

DETAILED INDEX  
DETAILED INDEX

GENERAL NOTES (2)

GENERAL NOTES  
GENERAL NOTES

TYPICAL SECTIONS (2)

TYPICAL SECTIONS – MAINLINE NEW CONSTRUCTION AND OVERLAY  
TYPICAL SECTIONS – BRIDGE END, GUARDRAIL AND RAMPS

QUANTITY SHEETS (9)

SUMMARY OF QUANTITIES  
SUMMARY OF QUANTITIES  
SUMMARY OF QUANTITIES  
ESTIMATED QUANTITIES – REMOVAL ITEMS  
ESTIMATED QUANTITIES – DRIVEWAYS AND SIDE DRAINS  
ESTIMATED QUANTITIES – BRIDGE END, TYPE D SILT BASINS AND BOX CULVERT  
ESTIMATED QUANTITIES – GUARDRAIL AND ESTIMATED EARTHWORK  
ESTIMATED QUANTITIES – SIGNS AND ASSEMBLIES AND PAVEMENT MARKINGS  
ESTIMATED QUANTITIES – FOR TRAFFIC CONTROL SIGNS

PLAN & PROFILE (6)

B.O.P. TO: STA. 1020 + 50  
YOCONA RIVER LAYOUT  
BOX CHANNEL CHANGE  
TEMPORARY DIVERSION CHANNEL  
LONGITUDINAL PEAKED STONE DIKE ALIGNMENT  
STA. 1020 + 50 TO E.O.P.

SPECIAL DESIGN (11)

EROSION CONTROL PLAN  
EROSION CONTROL PLAN  
EROSION CONTROL PLAN – RIPARIAN BUFFER  
DETAIL OF CONSTRUCTION SIGNING AND DETOUR  
PAVEMENT MARKING AND SIGNING PLAN – B.O.P. TO: STA. 1013 + 50  
PAVEMENT MARKING AND SIGNING PLAN – STA. 1013 + 50 TO E.O.P.  
BRIDGE END PAVEMENT WITH RAIL, OVERLAY, AND SLEEPER SLAB NEW CONSTRUCTION  
BRIDGE END PAVEMENT WITH RAIL (37.5" RAIL HEIGHT)  
SIGN SUPPORT HARDWARE 2.0" SQUARE POST  
VEGETATION SCHEDULE  
ROW COORDINATE SHEET

WK. NO.

SH. NO.

TITLE 1

DI-1 2  
DI-2 3

GN-1 4  
GN-2 5

TS-1 6  
TS-2 7

SQ-1 8  
SQ-2 9  
SQ-3 10  
EQ-1 11  
EQ-2 12  
EQ-3 13  
EQ-4 14  
EQ-5 15  
TCPO-1 16

WK-3 17  
WK-3DR 18  
WK-3BX 19  
WK-3T 20  
WK-LPSD 21  
WK-4 22

ECP-3 23  
ECP-4 24  
ECP-RB-3 25  
DCS-1 26  
PMD-1 27  
PMD-2 28  
SDBE-1 29  
SDBER-1 30  
TSS-2 31  
VS-1 32  
ROW-COR 33

DESCRIPTION OF SHEET

2017 ROADWAY DESIGN STANDARD DRAWINGS (48)

PAVEMENT MARKING DETAILS FOR 2 & 4-LANE DIVIDED ROADWAYS  
RUMBLE STRIPES 2-LANE HIGHWAYS (ASPHALT LANES, 2—FT. SHOULDERS)  
TYPICAL TEMPORARY EROSION CONTROL /SEDIMENT CONTROL APPLICATIONS  
DETAILS OF SEDIMENT BARRIER APPLICATIONS  
DETAILS OF SILT FENCE INSTALLATION  
DITCH CHECK STRUCTURES-TYPICAL APPLICATIONS AND DETAILS  
TEMPORARY EROSION, SEDIMENT AND WATER POLLUTION CONTROL MEASURES (SILT FENCE AND HAY BALE DITCH CHECKS)  
DETAILS OF EROSION CONTROL WATTLE DITCH CHECK  
DETAILS OF EROSION CONTROL SILT DIKE DITCH CHECK  
ROCK DITCH CHECK  
ROCK FILTER DAM  
ROCK DITCH CHECK WITH SUMP EXCAVATION AND ROCK FILTER DAM  
TYPICAL APPLICATIONS AND DETAILS FOR INLET CONSTRUCTION  
INLET PROTECTION DETAILS FOR SEDIMENT CONTROL STONE ON GRADES AND SAGS  
INLET PROTECTION DETAILS OF WATTLES  
INLET PROTECTIONDETAILS OF MANUFACTURED INLET PROTECTION DEVICE  
INLET PROTECTIONDETAILS OF SANDBAGS  
STABILIZED CONSTRUCTION ENTRANCE  
TEMPORARY STREAM DIVERSION  
TEMPORARY STREAM DIVERSION (BOX EXTENSION)  
FLOATING TURBIDITY CURTAIN  
DETAILS OF EROSION CONTROL SANDBAG DITCH CHECK  
SEDIMENT RETENTION BARRIER  
DETAILS OF TYPICAL DITCH TREATMENTS  
TYPICAL TEMPORARY EROSION CONTROL MEASURES (SLOPE DRAIN AND TYPE A SILT BASIN)  
TYPICAL TEMPORARY EROSION CONTROL MEASURES ( TYPE D SILT BASIN)(135 CU.YDS. CAPACITY PER ACRE OF DRAINAGE)  
SUPER SILT FENCE  
GUARDRAIL: "W" BEAM (WOOD POSTS)  
GUARDRAIL: "W" BEAM (STEEL POSTS)  
GUARDRAIL: BRIDGE END SECTION TYPE "I" (WOOD POSTS)(NEW CONSTRUCTION)  
GUARDRAIL: BRIDGE END SECTION TYPE "I" (STEEL POSTS)(NEW CONSTRUCTION)  
GUARDRAIL: TYPICAL INSTALLATION AT BRIDGE APPROCHES FOR 2-LANE, 2-WAY HIGHWAY  
GUARDRAIL: RUB RAIL HARDWARE  
GUARDRAIL: MISCELLANEOUS HARDWARE  
STANDARD ROADSIDE SIGNS  
STANDARD ROADSIDE SIGNS ASSEMBLY AND INSTALLATION  
TYPICAL INSTALLATION AND DETAILS OF DELINEATORS AND DISTANCE REFERENCE SIGNS  
TYPICAL GUARDRAIL DELINEATION  
SIGNING DETAILS FOR BRIDGE APPROACHES  
HIGHWAY SIGN AND BARRICADE DETAILS FOR CONSTRUCTION PROJECTS  
TEMPORARY STRIPING FOR TRAFFIC CONTROL 2-LANE AND 4-LANE DIVIDED HIGHWAYS  
RIGHT-OF-WAY MARKER  
RURAL DRIVEWAYS  
TYPICAL GRADING TRANSITION BETWEEN CUTS & FILLS  
MISCELLANEOUS DETAIL SHEET 1. STACKED PIPE JOINTS  
2.EXCAVATION AT GRADE POINTS  
DETAILS OF PAVED FLUMES  
PIPE CULVERT INSTALLATION  
FLEXIBLE PIPE CULVERT INSTALLATION

PM-1 6051  
RS-1 6064  
ECD-1 6101  
ECD-2 6102  
ECD-3 6103  
ECD-4 6104

ECD-5 6105  
ECD-6 6106  
ECD-7 6107  
ECD-8 6108  
ECD-9 6109  
ECD-10 6110  
ECD-11 6111  
ECD-12 6112  
ECD-13 6113  
ECD-14 6114  
ECD-15 6115  
ECD-16 6116  
ECD-18 6118  
ECD-19 6119  
ECD-20 6120  
ECD-21 6121  
ECD-22 6122  
DT-1 6123

BAS-A 6125

BAS-D 6129  
SSF-1 6130  
GR-1 6201  
GR-1B 6203  
GR-2F 6210  
GR-2G 6211  
GR-4A 6215  
GR-RR 6218  
GR-HW 6221  
SN-3A 6304  
SN-4 6306  
SN-8 6314  
SN-8C 6317  
SN-9 6318  
TCP-8 6358  
TCP-13 6363  
RW-1 6401  
RD-1 6403  
GT-1 6404

MDS-1 6425  
PF-1 6426  
PI-2 6501  
PI-1 6502

WK. NO.

SH. NO.

PS & E PLANS-DATE: 7/7/2023	
FMS CON. # 105338/302000	
REVISIONS	
DATE	SHEET NO. BY
1/11/24	8,14,17,19,22 BJ
1/23/24	8,14,19 BJ

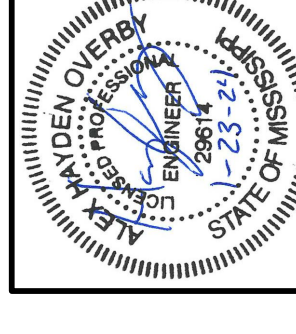
MISSISSIPPI DEPARTMENT OF TRANSPORTATION

**DETAILED INDEX**

PROJ. NO.: STP-2901-00(036)  
COUNTY: YALOBUSHA

WORKING NUMBER  
**DI-1**

DATE: FILENAME:DI-1.dgn DATE: 1/23/2024  
DESIGN TEAM: WAGGONER CHECKED: WAGGONER SHEET NUMBER: **2**





**ADDENDUM**

STATE MISS PROJECT NO. STP-2901-00(036)

**SUMMARY OF QUANTITIES (SHEET 1)**

PAY ITEM NO.	PAY ITEM	UNIT	YALOBUSHA : 105338-302000	
			Prelim	Final
201-A001	Clearing and Grubbing	LS	1	
202-B023	Removal of Bridge	EA	1	
202-B136	Removal of Guard Rail	LF	580	
202-B188	Removal of Pavement, All Types and Depths	SY	996	
202-B191	Removal of Pipe, 8" And Above	LF	190	
203-A001	Unclassified Excavation, FM, AH	CY	39,430	
203-EX020	Borrow Excavation, AH, FME, Class B9	CY	18,111	
203-G001	Excess Excavation, FM, AH	CY	2,500	
206-A001	Structure Excavation	CY	1,828	
206-B001	Select Material for Undercuts, Contractor Furnished, FM	CY	199	
209-A005	Geotextile Stabilization, Type V, Non-Woven	SY	4,747	
213-C001	Superphosphate	TON	6	
216-A001	Solid Sodding	SY	127	
217-A001	Ditch Liner	SY	1,689	
219-A001	Watering	KGAL	3	
220-A001	Insect Pest Control	ACRE	6	
221-A001	Concrete Paved Ditch	CY	17	
225-A001	Grassing	ACRE	12	
225-B001	Agricultural Limestone	TON	36	
225-C001	Mulch, Vegetative Mulch	TON	24	
226-A001	Temporary Grassing	ACRE	12	
907-234-A001	Temporary Silt Fence	LF	2,868	
907-234-C001	Super Silt Fence	LF	418	
235-A001	Temporary Erosion Checks	EA	38	
236-A008	Silt Basin, Type D	EA	2	
237-A002	Wattles, 20"	LF	188	
239-A001	Temporary Slope Drains	LF	100	
245-A001	Silt Dike	LF	188	
246-A001	Sandbags	LF	375	
247-A001	Temporary Stream Diversion	EA	1	
249-A001	Riprap for Erosion Control	TON	54	
907-253-A001	Coir Fiber Baffle	LF	204	
304-B004	Granular Material, Class 5, Group D	TON	1,450	
304-F001	3/4" and Down Crushed Stone Base	TON	2,100	
304-F002	OR Size 610 Crushed Stone Base	TON	2,100	
304-F003	OR Size 825B Crushed Stone Base	TON	2,100	
403-A003	12.5-mm, ST, Asphalt Pavement	TON	628	
403-A006	19-mm, ST, Asphalt Pavement	TON	571	

- ① ESTIMATED FOR PAVED FLUMES, INCLUDES 2 C.Y. FOR APRON AT BRIDGE ENDS.
- ② INCLUDES A 20% SHRINKAGE FACTOR
- ③ BR. #237.50, 1640 FOOT LONG, STEEL STRINGER/GIRDER WITH CONCRETE CAST IN PLACE DECK
- ④ QUANTITY ROUNDED TO THE NEAREST INCREMENT OF 50 OR 100
- ⑤ QUANTITY INCLUDES 170 L.F. ESTIMATED FOR SILT BASINS ON WK. 3.
- ⑥ QUANTITY INCLUDES : 50 TONS FOR GUARDRAIL AND 1 TON FOR RAMP APRON.
- ⑦ INCLUDES 87 TONS FOR RAMP STATION 1021+75

① ②  
① ②  
①

①

⑤

② ④  
② ④ ⑦

② ④ ⑦

② ④ ⑦  
⑥



By	Date	Revision
B3	01/23/2024	ADJUST EARTHWORK FOR CHANNEL EXCAVATION
B3	01/09/2024	REMOVE CHANNEL EXCAVATION, AND UNCLASSIFIED EXCAVATION AND ADJUST QUANTITIES

**MISSISSIPPI DEPARTMENT OF TRANSPORTATION**  
**SUMMARY OF QUANTITIES**

PROJ NO: STP-2901-00(036)  
COUNTY: YALOBUSHA

Working Number **SQ-1**  
Sheet Number **8**

FILENAME: Final Plans  
Design Team Checked Date







# ADDENDUM

STATE	PROJECT NO.
MISS.	STP-2901-00(036)

REVISIONS	DATE	BY
1	7/17/24	BU
2	7/23/24	BU

- 1 REVISE EARTHWORK BLOCK
- 2 ADD CUT QUANTITY FOR CHANNEL EXCAVATION

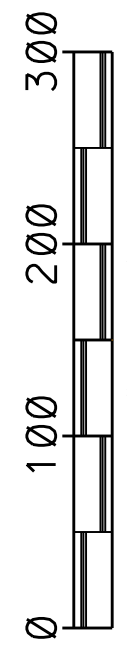
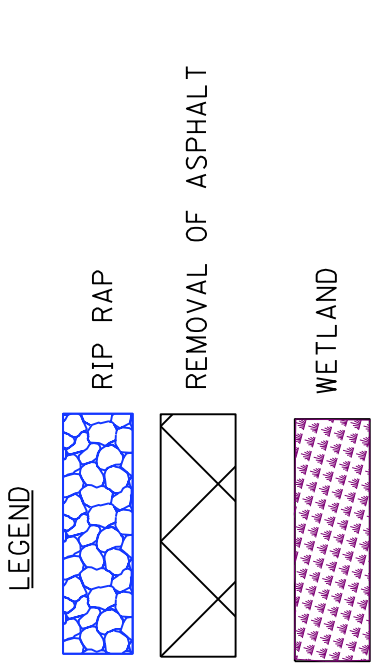
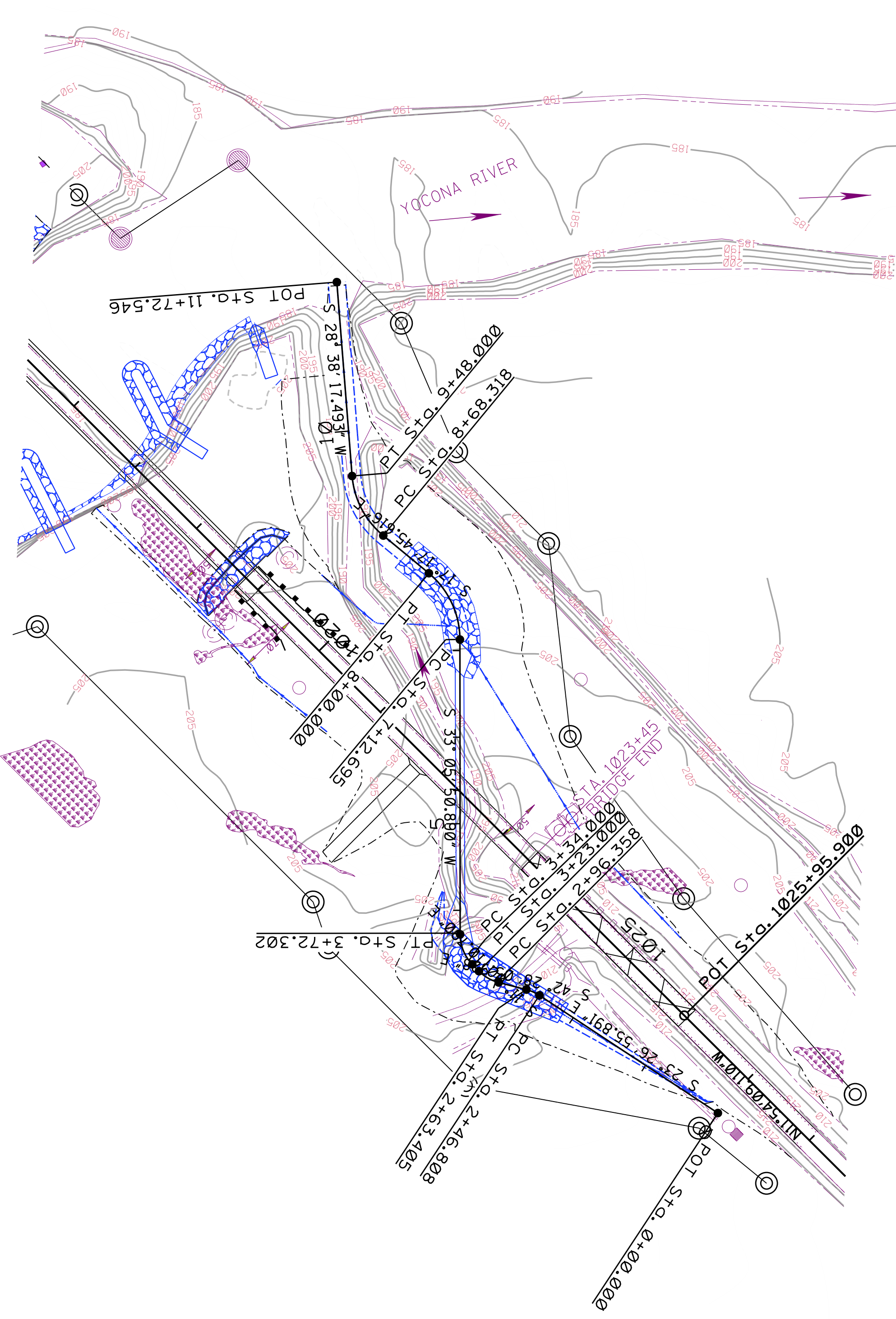
Curve ALI-BOXCULVER\_3  
 Δ = 19° 01' 10.038" (LT)  
 D = 114.35' 29.612"  
 L = 16.598'  
 T = 8.376'  
 BK S 23° 26' 55.891" E  
 AH S 42° 28' 05.928" E  
 PC 2+42.808  
 PT 2+63.405

Curve ALI-BOXCULVER\_6  
 Δ = 30° 31' 46.298" (RT)  
 D = 114.35' 29.612"  
 L = 16.598'  
 T = 8.376'  
 BK S 23° 26' 55.891" E  
 AH S 42° 28' 05.928" E  
 PC 2+42.808  
 PT 2+63.405

Curve ALI-BOXCULVER\_9  
 Δ = 43° 53' 25.224" (RT)  
 D = 114.35' 29.612"  
 L = 16.598'  
 T = 8.376'  
 BK S 23° 26' 55.891" E  
 AH S 42° 28' 05.928" E  
 PC 2+42.808  
 PT 2+63.405

Curve ALI-BOXCULVER\_12  
 Δ = 50° 01' 20.353" (LT)  
 D = 57.17' 44.808"  
 L = 87.305'  
 T = 46.554'  
 BK S 33° 05' 50.890" W  
 AH S 16° 55' 29.463" E  
 PC 7+12.695  
 PT 8+00.000

Curve ALI-BOXCULVER\_15  
 Δ = 45° 39' 14.977" (RT)  
 D = 57.17' 44.806"  
 L = 79.682'  
 T = 42.092'  
 BK S 33° 05' 50.890" W  
 AH S 16° 55' 29.463" E  
 PC 8+68.318  
 PT 9+48.000



EARTHWORK TOTAL THIS SHEET	
Cut	C.Y. 27,835
Fill	C.Y.
Excess	C.Y.
	C.Y.

