

SECTION 905 -- PROPOSAL (CONTINUED)

I (We) hereby certify by digital signature and electronic submission via Bid Express of the Section 905 proposal below, that all certifications, disclosures and affidavits incorporated herein are deemed to be duly executed in the aggregate, fully enforceable and binding upon delivery of the bid proposal. I (We) further acknowledge that this certification shall not extend to the bid bond or alternate security which must be separately executed for the benefit of the Commission. This signature does not cure deficiencies in any required certifications, disclosures and/or affidavits. I (We) also acknowledge the right of the Commission to require full and final execution on any certification, disclosure or affidavit contained in the proposal at the Commission's election upon award. Failure to so execute at the Commission's request within the time allowed in the Standard Specifications for execution of all contract documents will result in forfeiture of the bid bond or alternate security.

Bidder acknowledges receipt of and has added to and made a part of the proposal and contract documents the following addendum (addenda):

ADDENDUM NO. <u> 1 </u>	DATED	<u> 1/19/2024 </u>	ADDENDUM NO. <u> </u>	DATED	<u> </u>
ADDENDUM NO. <u> 2 </u>	DATED	<u> 1/24/2024 </u>	ADDENDUM NO. <u> </u>	DATED	<u> </u>
ADDENDUM NO. <u> 3 </u>	DATED	<u> 1/24/2024 </u>	ADDENDUM NO. <u> </u>	DATED	<u> </u>

Number	Description
1	Revised Table of Contents; Revised Notice to Bidder No. 5552; Added Notice to Bidder No. 5554; Revised Wage Rates; Revised Bid Items; Amendment EBSx Download Required.
2	Postponed until January 31, 2023; Amendment EBSx Download Required.
3	Revised Advertisement; Revised Notice to Bidder No. 5554; Revised Bid Items; Added or Revised Plan Sheet Nos. 6, 7, 8, 9, 19, 20 & 26; Amendment EBSx Download Required.

TOTAL ADDENDA: 3
(Must agree with total addenda issued prior to opening of bids)

Respectfully Submitted,

DATE _____

Contractor

BY _____
Signature

TITLE _____

ADDRESS _____

CITY, STATE, ZIP _____

PHONE _____

FAX _____

E-MAIL _____

(To be filled in if a corporation)

Our corporation is chartered under the Laws of the State of _____ and the names, titles and business addresses of the executives are as follows:

President	Address
Secretary	Address
Treasurer	Address

The following is my (our) itemized proposal.
 STBG-9327-00(009)/ 109321301000
 Desoto County(ies)
 Revised 01/26/2016

MISSISSIPPI DEPARTMENT OF TRANSPORTATION

SECTION 901 - ADVERTISEMENT

Electronic bids will be received by the Mississippi Transportation Commission at 10:00 o'clock A.M., Wednesday, January 31, 2024, from the Bid Express Service and shortly thereafter publicly read in the Construction Division for:

Traffic Signal Installation and Intersection Improvements on US 51 at Turman Drive, known as Federal Aid Project No. STBG-9327-00(009) / 109321301 in Desoto County.

The attention of bidders is directed to the Contract Provisions governing selection and employment of labor. Minimum wage rates have been predetermined by the Secretary of Labor and are subject to Public Law 87-581, Work Hours Act of 1962, as set forth in the Contract Provisions.

The Mississippi Department of Transportation hereby notifies all bidders that it will affirmatively insure that in any contract entered into pursuant to this advertisement, disadvantaged business enterprises will be afforded full opportunity to submit bids in response to this invitation and will not be discriminated against on the grounds of race, color, sex, age, disability, religion or national origin in consideration for an award.

The award of this contract will be contingent upon the Contractor satisfying the DBE requirements.

Contractors may request permission to bid online at <http://shop.mdot.ms.gov> at no cost. Upon approval, Contractors shall be eligible to submit a bid using Bid Express at <http://bidx.com>. Specimen proposals may be viewed and downloaded online at no cost at <http://mdot.ms.gov> or purchased online at <http://shop.mdot.ms.gov> at a cost of Ten Dollars (\$10.00) per proposal plus a small convenience fee. Cash or checks will not be accepted as payment.

Plans must be purchased online at <<https://shop.mdot.ms.gov>>. Costs of plans will be on a per sheet basis plus a small convenience fee. If you have any questions, you can contact the MDOT Plans Print Shop at (601) 359-7460, or e-mail at plans@mdot.state.ms.us. Plans will be shipped upon receipt of payment. Cash or checks will not be accepted as payment.

Bid bond, signed or countersigned by a Mississippi Agent or Qualified Nonresident Agent, with Power of Attorney attached, a Cashier's check or Certified Check for five (5%) percent of bid, payable to STATE OF MISSISSIPPI, must accompany each proposal.

The attention of bidders is directed to the provisions of Subsection 102.07 pertaining to irregular proposals and rejection of bids.

BRAD WHITE
EXECUTIVE DIRECTOR

MISSISSIPPI DEPARTMENT OF TRANSPORTATION

SECTION 904 - NOTICE TO BIDDERS NO. 5554

CODE: (SP)

DATE: 1/24/2024

SUBJECT: Contract Modifications

PROJECT: STBG-9327-00(009) / 109321301 – Desoto County

The Bidder's attention is called to the Summary of Quantities in the plans.

The following Pay Items & Quantities have been removed:

907-637-C003, Traffic Signal Conduit, Underground, PVC Coated, 2" – 200 LF.

907-637-C004, Traffic Signal Conduit, Underground, PVC Coated, 3" – 50 LF.

907-637-C009, Traffic Signal Conduit, Underground, Rolled Pipe, 2" – 800 LF.

The following Pay Items & Quantities have been added:

907-637-C028, Traffic Signal Conduit, Underground, Type 4, 2" – 200 LF.

907-637-C030, Traffic Signal Conduit, Underground, Type 4, 3" – 20 LF.

907-639-D001, Multimode Phase Selector – 1 Each.

The 1" PVC shown on Working No. TSI-1, Sheet No. 2001, is in error. This should be 2" PVC, and the quantity has been included in Pay Item 907-637-C028.

The quantity shown for Pay Item No. 907-663-A001, Network Switch, Type A, 1 Each, is in error. The correct quantity is 2 Each.

The quantity shown for Pay Item 202-B052, Removal of Concrete Driveways, All Depths – 434 SY is in error. The correct quantity is 49 SY.

The bid sheets are correct.

Traffic Signal Installation and Intersection Improvements on US 51 at Turman Drive, known as Federal Aid Project No. STBG-9327-00(009) / 109321301 in Desoto County.

Line No.	Item Code	Adj Code	Quantity	Units	Description [Fixed Unit Price]
Roadway Items					
0010	202-B007		384	Square Yard	Removal of Asphalt Pavement, All Depths
0020	202-B052		49	Square Yard	Removal of Concrete Driveways, All Depths
0030	202-B088		305	Linear Feet	Removal of Curb & Gutter, All Types
0032	203-A002	(E)	1,076	Cubic Yard	Unclassified Excavation, LVM, AH
0040	203-G002	(E)	2,299	Cubic Yard	Excess Excavation, LVM, AH
0050	206-A001	(S)	48	Cubic Yard	Structure Excavation
0060	209-A005		2,105	Square Yard	Geotextile Stabilization, Type V, Non-Woven
0070	211-B001	(E)	360	Cubic Yard	Topsoil for Slope Treatment, Contractor Furnished
0080	213-C001		1	Ton	Superphosphate
0090	216-A001		9	Square Yard	Solid Sodding
0100	217-A001		100	Square Yard	Ditch Liner
0110	219-A001		43	Thousand Gallon	Watering [\$20.00]
0120	220-A001		1	Acre	Insect Pest Control [\$30.00]
0130	225-A001		1	Acre	Grassing
0140	225-B001		1	Ton	Agricultural Limestone
0150	225-C001		2	Ton	Mulch, Vegetative Mulch
0160	226-A001		1	Acre	Temporary Grassing
0170	235-A001		3	Each	Temporary Erosion Checks
0180	237-A002		60	Linear Feet	Wattles, 20"
0190	246-A002		15	Each	Sandbags
0200	304-B004	(GT)	170	Ton	Granular Material, Class 5, Group D
0210	403-A004	(BA1)	240	Ton	19-mm, HT, Asphalt Pavement
0220	403-A006	(BA1)	262	Ton	19-mm, ST, Asphalt Pavement
0230	403-D001	(BA1)	175	Ton	12.5-mm, HT, Asphalt Pavement, Polymer Modified
0240	403-D007	(BA1)	705	Ton	9.5-mm, HT, Asphalt Pavement, Polymer Modified
0250	406-D001		6,890	Square Yard	Fine Milling of Bituminous Pavement, All Depths
0260	503-C010		304	Linear Feet	Saw Cut, Full Depth
0270	601-B001	(S)	8	Cubic Yard	Class "B" Structural Concrete, Minor Structures
0280	602-A001	(S)	666	Pounds	Reinforcing Steel
0290	603-CA011	(S)	320	Linear Feet	18" Reinforced Concrete Pipe, Class III
0300	604-B001		127	Pounds	Gratings
0310	609-D008	(S)	860	Linear Feet	Combination Concrete Curb and Gutter Type 3A

Line No.	Item Code	Adj Code	Quantity	Units	Description [Fixed Unit Price]
0320	614-A001	(S)	34	Square Yard	Concrete Driveway, Without Reinforcement
0330	618-A001		1	Lump Sum	Maintenance of Traffic
0340	619-A1002		5,288	Linear Feet	Temporary Traffic Stripe, Continuous White
0350	619-A2002		9,689	Linear Feet	Temporary Traffic Stripe, Continuous Yellow
0360	619-D1001		48	Square Feet	Standard Roadside Construction Signs, Less than 10 Square Feet
0370	619-D2001		496	Square Feet	Standard Roadside Construction Signs, 10 Square Feet or More
0380	619-G4005		56	Linear Feet	Barricades, Type III, Single Faced
0390	619-G5001		37	Each	Free Standing Plastic Drums
0400	619-G7001		52	Each	Warning Lights, Type "B"
0410	620-A001		1	Lump Sum	Mobilization
0420	626-A002		710	Linear Feet	6" Thermoplastic Double Drop Traffic Stripe, Skip White
0430	626-B001		540	Linear Feet	6" Thermoplastic Double Drop Traffic Stripe, Continuous White
0440	626-C001		1,812	Linear Feet	6" Thermoplastic Double Drop Edge Stripe, Continuous White
0450	626-D002		140	Linear Feet	6" Thermoplastic Double Drop Traffic Stripe, Skip Yellow
0460	626-E002		1,080	Linear Feet	6" Thermoplastic Double Drop Traffic Stripe, Continuous Yellow
0470	626-F002		53	Linear Feet	6" Thermoplastic Double Drop Edge Stripe, Continuous Yellow
0480	626-G004		4,494	Linear Feet	Thermoplastic Double Drop Detail Stripe, White
0490	626-G005		3,094	Linear Feet	Thermoplastic Double Drop Detail Stripe, Yellow
0500	626-H001		324	Square Feet	Thermoplastic Double Drop Legend, White
0510	626-H002		127	Linear Feet	Thermoplastic Double Drop Legend, White
0520	627-J001		24	Each	Two-Way Clear Reflective High Performance Raised Markers
0530	627-K001		63	Each	Red-Clear Reflective High Performance Raised Markers
0540	627-L001		201	Each	Two-Way Yellow Reflective High Performance Raised Markers
0550	630-A001		36	Square Feet	Standard Roadside Signs, Sheet Aluminum, 0.080" Thickness
0560	630-C005		86	Linear Feet	Square Tube Posts, 2.0 lb/ft
0570	635-A059		6	Each	Traffic Signal Head, Type 1
0580	635-A063		2	Each	Traffic Signal Head, Type 2R
0590	635-A065		2	Each	Traffic Signal Head, Type 2 FYA
0600	635-A070		2	Each	Traffic Signal Head, Type 3
0610	684-A004		4	Cubic Yard	Pole Foundation, 30" Diameter
0620	684-A005		7	Cubic Yard	Pole Foundation, 36" Diameter
0630	685-A003		100	Linear Feet	Underground Electric Cable, UF, AWG 4, 3 Conductor
0640	699-A001		1	Lump Sum	Roadway Construction Stakes
0650	907-234-A001		1,350	Linear Feet	Temporary Silt Fence

Line No.	Item Code	Adj Code	Quantity	Units	Description [Fixed Unit Price]
0660	907-234-D001		3	Each	Inlet Siltation Guard
0670	907-632-A007		1	Each	Solid State Traffic Cabinet Assembly, Type III Cabinet, Type 1 Controller
0680	907-632-J001		1	Each	Power Service Pedestal
0690	907-634-A044		1	Each	Traffic Signal Equipment Pole, Type II(L), 30' Shaft, 40' Arm
0700	907-634-A047		1	Each	Traffic Signal Equipment Pole, Type II(L), 30' Shaft, 55' Arm
0710	907-634-A083		1	Each	Traffic Signal Equipment Pole, Type II, 17' Shaft, 45' Arm
0720	907-634-A089		1	Each	Traffic Signal Equipment Pole, Type II, 17' Shaft, 65' Arm
0730	907-634-PP004		2	Each	Traffic Signal Equipment Pole Luminaire Fixture
0740	907-636-B011		300	Linear Feet	Electric Cable, Underground in Conduit, IMSA 20-1, AWG 14, 2 Conductor
0750	907-636-B016		900	Linear Feet	Electric Cable, Underground in Conduit, IMSA 20-1, AWG 14, 8 Conductor
0760	907-636-D002		150	Linear Feet	Electric Cable, Aerial Supported in Conduit, IMSA 20-1, AWG 12, 2 Conductor
0770	907-636-D008		300	Linear Feet	Electric Cable, Aerial Supported in Conduit, IMSA 20-1, AWG 14, 8 Conductor
0780	907-637-A002		3	Each	Pullbox Enclosure, Type 2
0790	907-637-A003		1	Each	Pullbox Enclosure, Type 3
0830	907-637-C011		800	Linear Feet	Traffic Signal Conduit, Underground, Rolled Pipe, 3"
0832	907-637-C028		200	Linear Feet	Traffic Signal Conduit, Underground, Type 4, 2"
0834	907-637-C030		20	Linear Feet	Traffic Signal Conduit, Underground, Type 4, 3"
0840	907-639-B001		4	Each	Type 1 Optical Detector
0850	907-639-C001		1,050	Linear Feet	Type 1 Optical Detector Cable
0852	907-639-D001		1	Each	Multimode Phase Selector
0860	907-641-A001		4	Each	Signal Stop Bar Radar Vehicle Detection Sensor, Type 1
0870	907-641-B001		2	Each	Signal Advanced Radar Vehicle Detection Sensor, Type 1
0880	907-641-D001		1,700	Linear Feet	Radar Vehicle Detection Cable
0890	907-650-A004		1	Each	On Street Video Equipment, PTZ Type, Signal Monitoring
0900	907-653-B001		32	Square Feet	Street Name Sign
0910	907-662-D002		2	Each	Radio Interconnect, Broadband, Short Range
0920	907-663-A001		2	Each	Network Switch, Type A
ALTERNATE GROUP AA NUMBER 1					
0930	304-F001	(GT)	880	Ton	3/4" and Down Crushed Stone Base
ALTERNATE GROUP AA NUMBER 2					
0940	304-F002	(GT)	880	Ton	Size 610 Crushed Stone Base
ALTERNATE GROUP AA NUMBER 3					
0950	304-F003	(GT)	880	Ton	Size 825B Crushed Stone Base



DESIGNED BY: KIMLEY-HORN
 DETAILED BY: KIMLEY-HORN
 CHECKED BY: KIMLEY-HORN
 DATE: 01/22/2024

FMS CON: 109321/301000
 PROJECT NO.: STBG-9327-00(009)
 COUNTY: DESOTO

SUMMARY OF QUANTITIES

WK. NO. **SQ-1**
 SHEET NO. **6**

- ① INCLUDES 12 TONS FOR DRIVES, 717 TONS FOR MAINLINE, AND 151 TONS FOR UNDER CURB AND GUTTER.
- ② INCLUDES A 20% INCREASE FROM CALCULATED QUANTITY

PAY ITEM NO.	PAY ITEM	UNIT	DESOTO : 109321-301000	
			Prelim	Final
202-B007	Removal of Asphalt Pavement, All Depths	SY	384	
202-B052	Removal of Concrete Driveways, All Depths	SY	434	
202-B088	Removal of Curb & Gutter, All Types	LF	305	
203-A002	Unclassified Excavation, LVM, AH	CY	1,076	②
203-G002	Excess Excavation, LVM, AH	CY	2,299	① ②
206-A001	Structure Excavation	CY	48	①
209-A005	Geotextile Stabilization, Type V, Non-Woven	SY	2,105	
211-B001	Topsoil for Slope Treatment, Contractor Furnished	CY	360	
213-C001	Superphosphate	TON	1	
216-A001	Solid Sodding	SY	9	
217-A001	Ditch Liner	SY	100	
219-A001	Watering	KGAL	43	
220-A001	Insect Pest Control	ACRE	1	
225-A001	Grassing	ACRE	1	
225-B001	Agricultural Limestone	TON	1	
225-C001	Mulch, Vegetative Mulch	TON	2	
226-A001	Temporary Grassing	ACRE	1	
907-234-A001	Temporary Silt Fence	LF	1,350	
907-234-D001	Inlet Siltation Guard	EA	3	
235-A001	Temporary Erosion Checks	EA	3	
237-A002	Wattles, 20"	LF	60	
246-A002	Sandbags	EA	15	
304-B004	Granular Material, Class 5, Group D	TON	170	② ①
304-F001	3/4" and Down Crushed Stone Base	TON	880	① ②
	OR			
304-F002	Size 610 Crushed Stone Base	TON	880	① ②
	OR			
304-F003	Size 825B Crushed Stone Base	TON	880	① ②
403-A004	19-mm, HT, Asphalt Pavement	TON	240	
403-A006	19-mm, ST, Asphalt Pavement	TON	262	
403-D001	12.5-mm, HT, Asphalt Pavement, Polymer Modified	TON	175	
403-D007	9.5-mm, HT, Asphalt Pavement, Polymer Modified	TON	705	
406-D001	Fine Milling of Bituminous Pavement, All Depths	SY	6,890	
503-C010	Saw Cut, Full Depth	LF	304	
601-B001	Class "B" Structural Concrete, Minor Structures	CY	8	
602-A001	Reinforcing Steel	LBS	666	
603-CA011	18" Reinforced Concrete Pipe, Class III	LF	320	
604-B001	Gratings	LBS	127	
609-D008	Combination Concrete Curb and Gutter Type 3A	LF	860	
614-A001	Concrete Driveway, Without Reinforcement	SY	34	
618-A001	Maintenance of Traffic	LS	1	
619-A1002	Temporary Traffic Stripe, Continuous White	LF	5,288	
619-A2002	Temporary Traffic Stripe, Continuous Yellow	LF	9,689	
619-D1001	Standard Roadside Construction Signs, Less than 10 Square Feet	SF	48	
619-D2001	Standard Roadside Construction Signs, 10 Square Feet or More	SF	496	
619-G4005	Barricades, Type III, Single Faced	LF	56	



DESIGNED BY: KIMLEY-HORN
 DETAILED BY: KIMLEY-HORN
 CHECKED BY: KIMLEY-HORN
 DATE: 01/22/2024

FMS CON: 109321/301000
 PROJECT NO.: STBG-9327-00(009)
 COUNTY: DESOTO

SUMMARY OF QUANTITIES

WK. NO. **SQ-2**
 SHEET NO. **7**

PAY ITEM NO.	PAY ITEM	UNIT	DESOTO : 109321-301000	
			Prelim	Final
619-G5001	Free Standing Plastic Drums	EA	37	
619-G7001	Warning Lights, Type "B"	EA	52	
620-A001	Mobilization	LS	1	
626-A002	6" Thermoplastic Double Drop Traffic Stripe, Skip White	LF	710	
626-B001	6" Thermoplastic Double Drop Traffic Stripe, Continuous White	LF	540	
626-C001	6" Thermoplastic Double Drop Edge Stripe, Continuous White	LF	1,812	
626-D002	6" Thermoplastic Double Drop Traffic Stripe, Skip Yellow	LF	140	
626-E002	6" Thermoplastic Double Drop Traffic Stripe, Continuous Yellow	LF	1,080	
626-F002	6" Thermoplastic Double Drop Edge Stripe, Continuous Yellow	LF	53	
626-G004	Thermoplastic Double Drop Detail Stripe, White	LF	4,494	
626-G005	Thermoplastic Double Drop Detail Stripe, Yellow	LF	3,094	
626-H001	Thermoplastic Double Drop Legend, White	SF	324	
626-H002	Thermoplastic Double Drop Legend, White	LF	127	
627-J001	Two-Way Clear Reflective High Performance Raised Markers	EA	24	
627-K001	Red-Clear Reflective High Performance Raised Markers	EA	63	
627-L001	Two-Way Yellow Reflective High Performance Raised Markers	EA	201	
630-A001	Standard Roadside Signs, Sheet Aluminum, 0.080" Thickness	SF	36	
630-C005	Square Tube Posts, 2.0 lb/ft	LF	86	
907-632-A007	Solid State Traffic Cabinet Assembly, Type III Cabinet, Type 1 Controller	EA	1	
907-632-J001	Power Service Pedestal	EA	1	
907-634-A044	Traffic Signal Equipment Pole, Type II(L), 30' Shaft, 40' Arm	EA	1	
907-634-A047	Traffic Signal Equipment Pole, Type II(L), 30' Shaft, 55' Arm	EA	1	
907-634-A083	Traffic Signal Equipment Pole, Type II, 17' Shaft, 45' Arm	EA	1	
907-634-A089	Traffic Signal Equipment Pole, Type II, 17' Shaft, 65' Arm	EA	1	
907-634-PP004	Traffic Signal Equipment Pole Luminaire Fixture	EA	2	
635-A059	Traffic Signal Head, Type 1	EA	6	
635-A063	Traffic Signal Head, Type 2R	EA	2	
635-A065	Traffic Signal Head, Type 2 FYA	EA	2	
635-A070	Traffic Signal Head, Type 3	EA	2	
907-636-B011	Electric Cable, Underground in Conduit, IMSA 20-1, AWG 14, 2 Conductor	LF	300	
907-636-B016	Electric Cable, Underground in Conduit, IMSA 20-1, AWG 14, 8 Conductor	LF	900	
907-636-D002	Electric Cable, Aerial Supported in Conduit, IMSA 20-1, AWG 12, 2 Conductor	LF	150	
907-636-D008	Electric Cable, Aerial Supported in Conduit, IMSA 20-1, AWG 14, 8 Conductor	LF	300	
907-637-A002	Pullbox Enclosure, Type 2	EA	3	
907-637-A003	Pullbox Enclosure, Type 3	EA	1	
907-637-C003	Traffic Signal Conduit, Underground, PVC Coated, 2"	LF	200	
907-637-C004	Traffic Signal Conduit, Underground, PVC Coated, 3"	LF	50	
907-637-C009	Traffic Signal Conduit, Underground, Rolled Pipe, 2"	LF	800	
907-637-C011	Traffic Signal Conduit, Underground, Rolled Pipe, 3"	LF	800	
907-639-B001	Type 1 Optical Detector	EA	4	
907-639-C001	Type 1 Optical Detector Cable	LF	1,050	
907-641-A001	Signal Stop Bar Radar Vehicle Detection Sensor, Type 1	EA	4	
907-641-B001	Signal Advanced Radar Vehicle Detection Sensor, Type 1	EA	2	
907-641-D001	Radar Vehicle Detection Cable	LF	1,700	
907-650-A004	On Street Video Equipment, PTZ Type, Signal Monitoring	EA	1	
907-653-B001	Street Name Sign	SF	32	

2
1

SUMMARY OF QUANTITIES (SHEET 2)



DESIGNED BY: KIMLEY-HORN
 DETAILED BY: KIMLEY-HORN
 CHECKED BY: KIMLEY-HORN
 DATE: 01/22/2024

FMS CON: 109321/301000
 PROJECT NO.: STBG-9327-00(009)
 COUNTY: DESOTO

SUMMARY OF QUANTITIES

WK. NO. **SQ-3**
 SHEET NO. **8**

PAY ITEM NO.	PAY ITEM	UNIT	DESOTO : 109321-301000	
			Prelim	Final
907-662-D002	Radio Interconnect, Broadband, Short Range	EA	2	
907-663-A001	Network Switch, Type A	EA	1	
684-A004	Pole Foundation, 30" Diameter	CY	4	
684-A005	Pole Foundation, 36" Diameter	CY	7	
685-A003	Underground Electric Cable, UF, AWG 4, 3 Conductor	LF	100	
699-A001	Roadway Construction Stakes	LS	1	

2
1

SUMMARY OF QUANTITIES (SHEET 3)



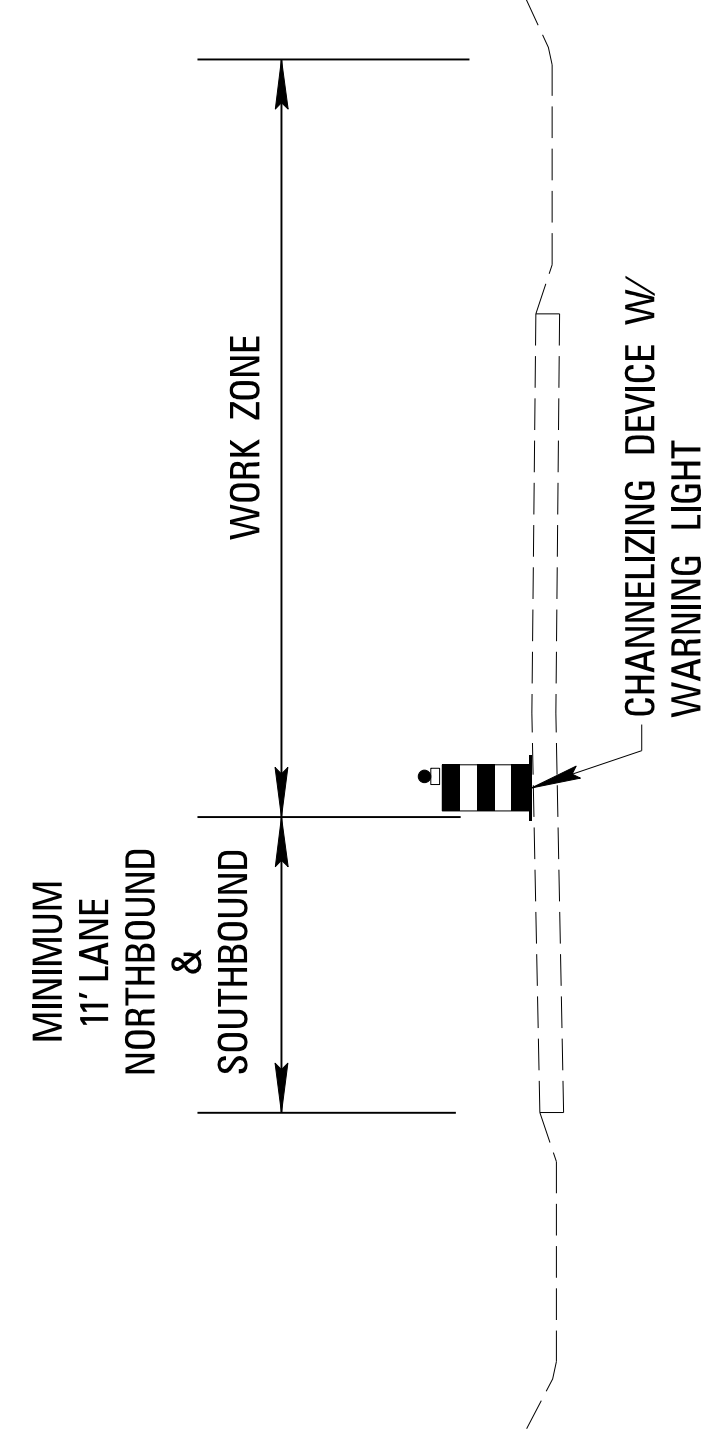
DESIGNED BY: KIMLEY-HORN
 DETAILED BY: KIMLEY-HORN
 CHECKED BY: KIMLEY-HORN
 DATE: 01/22/2024

FMS CON: 109321/301000
 PROJECT NO.: STBG-9327-00(009)
 COUNTY: DESOTO

WK. NO. TC-1
 SHEET NO. 19

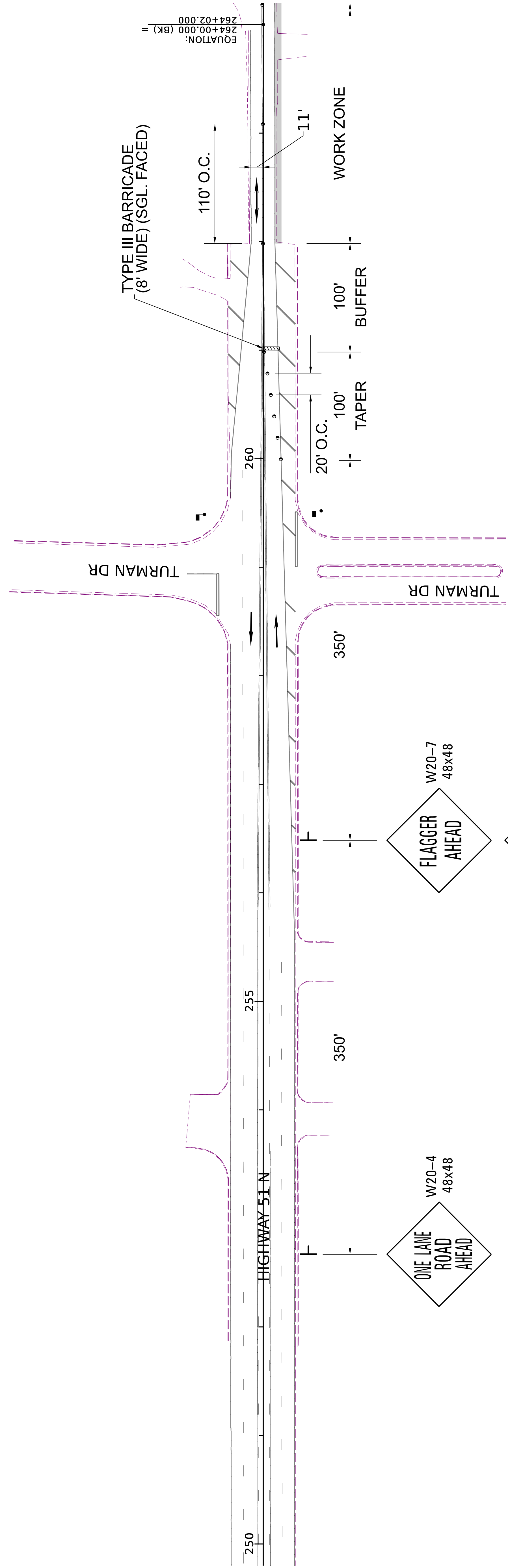
TRAFFIC CONTROL PLAN
 PHASE 1

TRAFFIC CONTROL PHASE 1 SCOPE OF WORK:
 - FLAGGER OPERATION, 2-WAY TRAFFIC MAINTAINED IN ONE EXISTING LANE (11' MIN.)
 - CONSTRUCTION OF 5' PAVEMENT WIDENING ON WEST SIDE OF ROADWAY.
 - SEE SHEETS DCS-1 AND DCS-2 FOR ADVANCED SIGNING DETAILS.

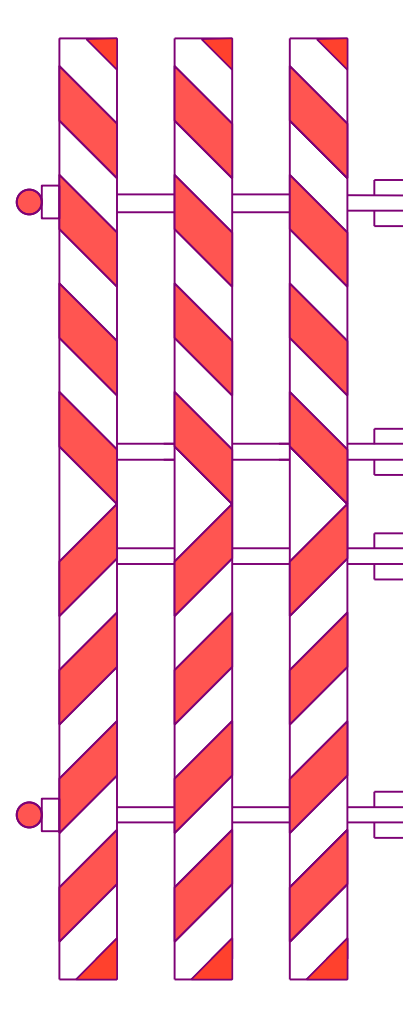


PHASE 1 TYPICAL SECTION

STA 245 + 98.20 TO STA 284 + 42.55



EQUATION:
 $264+00.000 (BK) = 264+02.000$



TEMPORARY BARRICADE DETAIL
 FOR ROAD CLOSURE DURING CONSTRUCTION

TRAFFIC CONTROL ITEMS THIS SHEET			
SIGN	DESCRIPTION	SIZE	QUANTITY
	TYPE "B" WARNING LIGHT	EACH	10
	TYPE III BARRICADE (8' WIDE) (SGL. FACED)	L.F.	8
	FREESTANDING PLASTIC DRUM	EACH	8
	FLAGGER	EACH	2
W20-4	ONE LANE ROAD AHEAD	48" X 48"	1
W20-7	FLAGGER AHEAD	48" X 48"	1
W20-7a	FLAGGER (SYMBOL)	48" X 48"	1

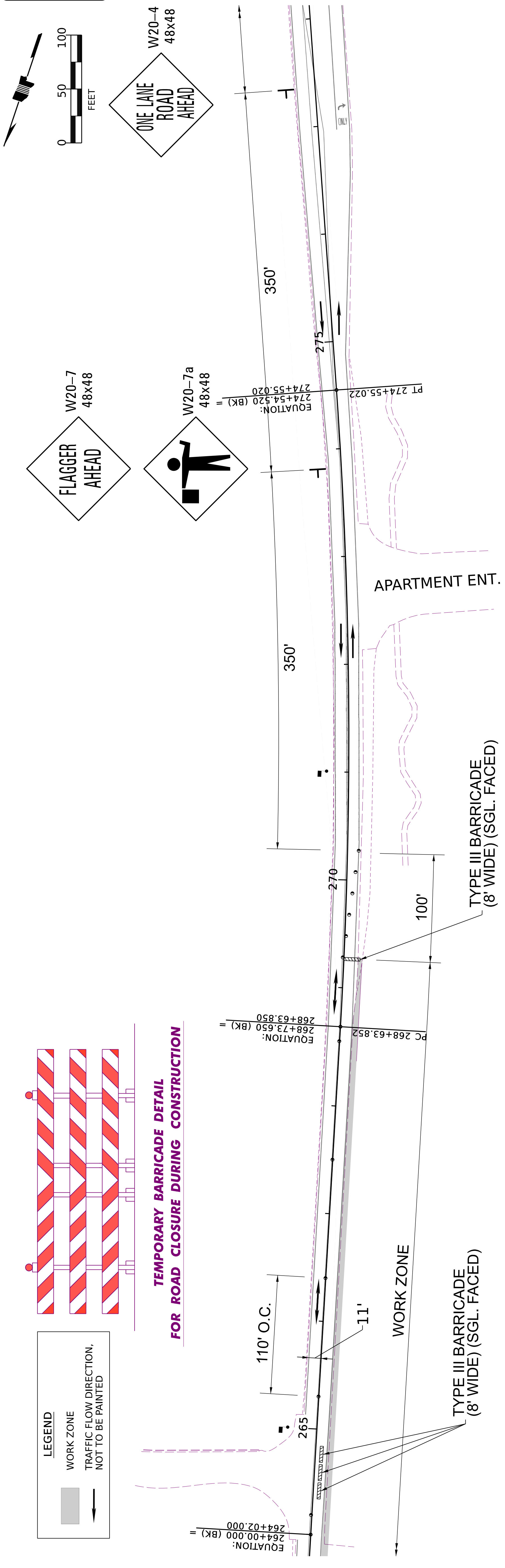


DESIGNED BY: KIMLEY-HORN
 DETAILED BY: KIMLEY-HORN
 CHECKED BY: KIMLEY-HORN
 DATE: 01/22/2024

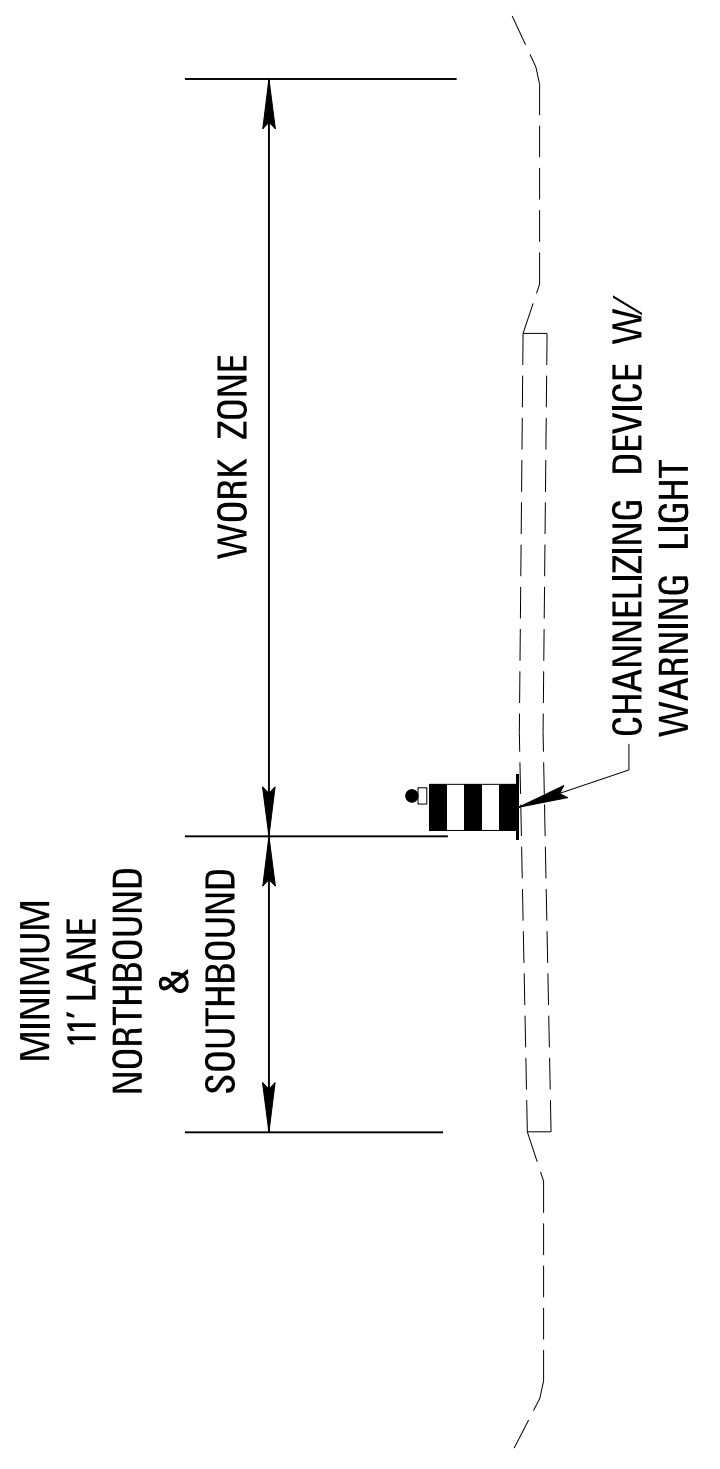
FMS CON: 109321/301000
 PROJECT NO.: STBG-9327-00(009)
 COUNTY: DESOTO

TRAFFIC CONTROL PLAN
 PHASE 1

WK. NO. TC-2
 SHEET NO. 20



TRAFFIC CONTROL PHASE 1 SCOPE OF WORK:
 - FLAGGER OPERATION, 2-WAY TRAFFIC MAINTAINED IN ONE EXISTING LANE (11' MIN.)
 - CONSTRUCTION OF 5' PAVEMENT WIDENING ON WEST SIDE OF ROADWAY.
 - SEE SHEETS DCS-1 AND DCS-2 FOR ADVANCED SIGNING DETAILS.

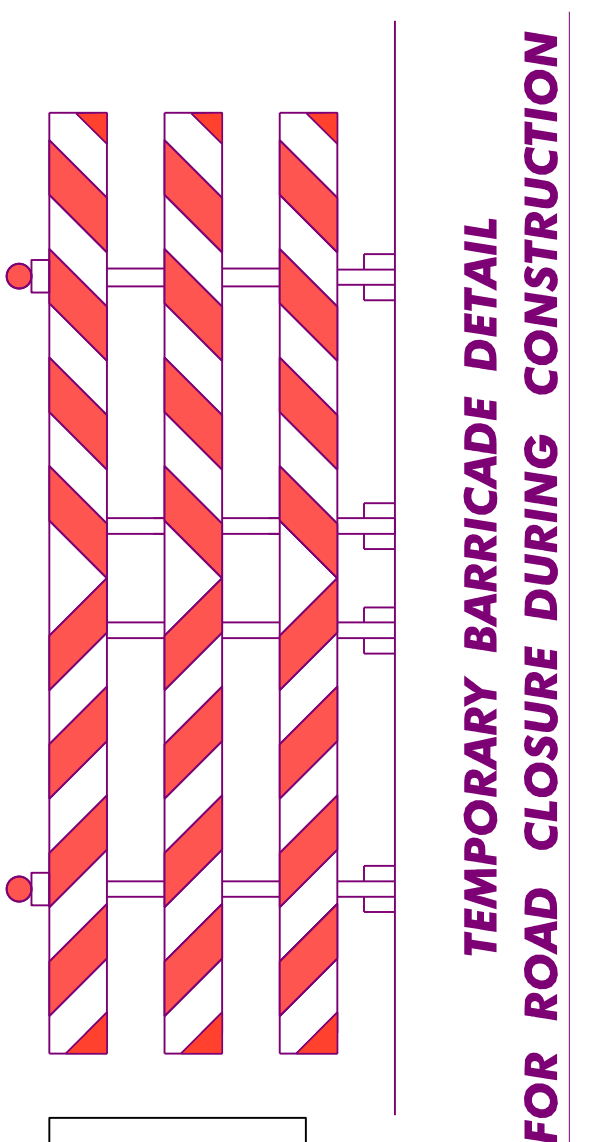


PHASE 1 TYPICAL SECTION

STA 245 + 98.20 TO STA 284 + 42.55

SIGN	DESCRIPTION	SIZE	QUANTITY
W20-7	TYPE "B" WARNING LIGHT	EACH	19
W20-4	TYPE III BARRICADE (8' WIDE) (SGL. FACED)	L.F.	32
W21-5	FREESTANDING PLASTIC DRUM	EACH	11
W20-7a	FLAGGER	EACH	2
W21-5	SHOULDER WORK	48" X 48"	1
W20-4	ONE LANE ROAD AHEAD	48" X 48"	1
W20-7	FLAGGER AHEAD	48" X 48"	1
W20-7a	FLAGGER (SYMBOL)	48" X 48"	1

TRAFFIC CONTROL ITEMS THIS SHEET



LEGEND
 WORK ZONE
 TRAFFIC FLOW DIRECTION,
 NOT TO BE PAINTED

