

SECTION 905 -- PROPOSAL (CONTINUED)

I (We) hereby certify by digital signature and electronic submission via Bid Express of the Section 905 proposal below, that all certifications, disclosures and affidavits incorporated herein are deemed to be duly executed in the aggregate, fully enforceable and binding upon delivery of the bid proposal. I (We) further acknowledge that this certification shall not extend to the bid bond or alternate security which must be separately executed for the benefit of the Commission. This signature does not cure deficiencies in any required certifications, disclosures and/or affidavits. I (We) also acknowledge the right of the Commission to require full and final execution on any certification, disclosure or affidavit contained in the proposal at the Commission's election upon award. Failure to so execute at the Commission's request within the time allowed in the Standard Specifications for execution of all contract documents will result in forfeiture of the bid bond or alternate security.

Bidder acknowledges receipt of and has added to and made a part of the proposal and contract documents the following addendum (addenda):

ADDENDUM NO. <u> 1 </u>	DATED <u> 3/21/2024 </u>	ADDENDUM NO. <u> </u>	DATED <u> </u>
ADDENDUM NO. <u> 2 </u>	DATED <u> 3/25/2024 </u>	ADDENDUM NO. <u> </u>	DATED <u> </u>
ADDENDUM NO. <u> 3 </u>	DATED <u> 3/28/2024 </u>	ADDENDUM NO. <u> </u>	DATED <u> </u>

Number	Description
1	Revised Table of Contents; Added Notice to Bidder No. 5644; Revised Bid Items; Amendment EBSx Download Required.
2	Postponed til April 2, 2024 Letting; Amendment EBSx Download Required.
3	Revised Advertisement; Revised Bid Items; Revised or Added Plan Sheet Nos. 2, 10, 11, 12, 15, 24, 26 & 29; Amendment EBSx Download Required.

TOTAL ADDENDA: 3
(Must agree with total addenda issued prior to opening of bids)

Respectfully Submitted,

DATE _____

Contractor

BY _____
Signature

TITLE _____

ADDRESS _____

CITY, STATE, ZIP _____

PHONE _____

FAX _____

E-MAIL _____

(To be filled in if a corporation)

Our corporation is chartered under the Laws of the State of _____ and the names, titles and business addresses of the executives are as follows:

President Address

Secretary Address

Treasurer Address

The following is my (our) itemized proposal.
STBG-2901-00(025)/ 103332301000
Yalobusha County(ies)

Revised 01/26/2016

MISSISSIPPI DEPARTMENT OF TRANSPORTATION

SECTION 901 - ADVERTISEMENT

Electronic bids will be received by the Mississippi Transportation Commission at 10:00 o'clock A.M., Tuesday, April 2, 2024, from the Bid Express Service and shortly thereafter publicly read on the Sixth Floor for:

Bridge Replacements on US 51 (Bridge Nos. 224.7, 227.0, 227.6 & 228.6), known as Federal Aid Project No. STBG-2901-00(025) / 103332301 in Yalobusha County.

The attention of bidders is directed to the Contract Provisions governing selection and employment of labor. Minimum wage rates have been predetermined by the Secretary of Labor and are subject to Public Law 87-581, Work Hours Act of 1962, as set forth in the Contract Provisions.

The Mississippi Department of Transportation hereby notifies all bidders that it will affirmatively insure that in any contract entered into pursuant to this advertisement, disadvantaged business enterprises will be afforded full opportunity to submit bids in response to this invitation and will not be discriminated against on the grounds of race, color, sex, age, disability, religion or national origin in consideration for an award.

The award of this contract will be contingent upon the Contractor satisfying the DBE requirements.

Contractors may request permission to bid online at <http://shop.mdot.ms.gov> at no cost. Upon approval, Contractors shall be eligible to submit a bid using Bid Express at <http://bidx.com>. Specimen proposals may be viewed and downloaded online at no cost at <http://mdot.ms.gov> or purchased online at <http://shop.mdot.ms.gov> at a cost of Ten Dollars (\$10.00) per proposal plus a small convenience fee. Cash or checks will not be accepted as payment.

Plans must be purchased online at <<https://shop.mdot.ms.gov>>. Costs of plans will be on a per sheet basis plus a small convenience fee. If you have any questions, you can contact the MDOT Plans Print Shop at (601) 359-7460, or e-mail at plans@mdot.state.ms.us. Plans will be shipped upon receipt of payment. Cash or checks will not be accepted as payment.

Bid bond, signed or countersigned by a Mississippi Agent or Qualified Nonresident Agent, with Power of Attorney attached, a Cashier's check or Certified Check for five (5%) percent of bid, payable to STATE OF MISSISSIPPI, must accompany each proposal.

The attention of bidders is directed to the provisions of Subsection 102.07 pertaining to irregular proposals and rejection of bids.

BRAD WHITE
EXECUTIVE DIRECTOR

Bridge Replacements on US 51 (Bridge Nos. 224.7, 227.0, 227.6 & 228.6), known as Federal Aid Project No. STBG-2901-00(025) / 103332301 in Yalobusha County.

Line No.	Item Code	Adj Code	Quantity	Units	Description [Fixed Unit Price]
Roadway Items					
0010	201-A001		1	Lump Sum	Clearing and Grubbing
0020	201-B001		5	Acre	Clearing and Grubbing
0030	202-A001		1	Lump Sum	Removal of Obstructions
0040	202-B007		16,102	Square Yard	Removal of Asphalt Pavement, All Depths
0050	202-B023		4	Each	Removal of Bridge
0060	202-B069		20,782	Square Yard	Removal of Concrete Pavement w/ Variable Depth Overlay
0070	202-B136		2,585	Linear Feet	Removal of Guard Rail
0080	202-B191		427	Linear Feet	Removal of Pipe, 8" And Above
0090	202-B240		160	Linear Feet	Removal of Traffic Stripe
0100	203-A001	(E)	75,080	Cubic Yard	Unclassified Excavation, FM, AH
0110	203-EX020	(E)	24,846	Cubic Yard	Borrow Excavation, AH, FME, Class B9
0120	203-G001	(E)	25,369	Cubic Yard	Excess Excavation, FM, AH
0130	206-A001	(S)	185	Cubic Yard	Structure Excavation
0140	209-A005		18,249	Square Yard	Geotextile Stabilization, Type V, Non-Woven
0150	213-C001		26	Ton	Superphosphate
0160	216-A001		338	Square Yard	Solid Sodding
0170	217-A001		6,723	Square Yard	Ditch Liner
0180	219-A001		7	Thousand Gallon	Watering [\$20.00]
0190	220-A001		33	Acre	Insect Pest Control [\$30.00]
0200	221-A001	(S)	61	Cubic Yard	Concrete Paved Ditch
0210	223-A001		66	Acre	Mowing [\$50.00]
0220	225-A001		51	Acre	Grassing
0230	225-B001		26	Ton	Agricultural Limestone
0240	225-C001		102	Ton	Mulch, Vegetative Mulch
0250	226-A001		51	Acre	Temporary Grassing
0260	235-A001		130	Each	Temporary Erosion Checks
0270	236-A008		10	Each	Silt Basin, Type D
0280	237-A002		2,520	Linear Feet	Wattles, 20"
0290	239-A001		815	Linear Feet	Temporary Slope Drains
0300	245-A001		520	Linear Feet	Silt Dike
0310	246-B001		445	Each	Rockbags
0320	249-A001		468	Ton	Riprap for Erosion Control

Line No.	Item Code	Adj Code	Quantity	Units	Description [Fixed Unit Price]
0330	249-B001		173	Cubic Yard	Remove and Reset Riprap
0340	304-B004	(GT)	15,350	Ton	Granular Material, Class 5, Group D
0350	403-A003	(BA1)	2,593	Ton	12.5-mm, ST, Asphalt Pavement
0360	403-A006	(BA1)	5,151	Ton	19-mm, ST, Asphalt Pavement
0370	403-A015	(BA1)	4,214	Ton	9.5-mm, ST, Asphalt Pavement
0380	406-D001		10,180	Square Yard	Fine Milling of Bituminous Pavement, All Depths
0390	407-A001	(A2)	4,399	Gallon	Asphalt for Tack Coat
0400	423-A001		2	Mile	Rumble Strips, Ground In
0410	502-A001	(C)	741	Square Yard	Reinforced Cement Concrete Bridge End Pavement
0420	503-C010		1,292	Linear Feet	Saw Cut, Full Depth
0430	601-B001	(S)	10	Cubic Yard	Class "B" Structural Concrete, Minor Structures
0440	603-ALT003	(S)	360	Linear Feet	18" Type A Alternate Pipe
0450	603-ALT005	(S)	40	Linear Feet	22" x 13" Type A Alternate Pipe
0460	603-ALT008	(S)	40	Linear Feet	29" x 18" Type A Alternate Pipe
0470	603-ALT009	(S)	40	Linear Feet	30" Type A Alternate Pipe
0480	603-CA011	(S)	704	Linear Feet	18" Reinforced Concrete Pipe, Class III
0490	603-CA026	(S)	64	Linear Feet	24" Reinforced Concrete Pipe, Class III
0500	603-CB003	(S)	20	Each	18" Reinforced Concrete End Section
0510	603-CB004	(S)	2	Each	24" Reinforced Concrete End Section
0520	605-AA002	(S)	207	Square Yard	Geotextile for Subsurface Drainage, Type V
0530	605-O002	(S)	315	Linear Feet	4" Perforated Sewer Pipe for Underdrains, SDR 23.5
0540	605-P002	(S)	59	Linear Feet	4" Non-perforated Sewer Pipe for Underdrains, SDR 23.5
0550	605-W001	(GY)	14	Cubic Yard	Filter Material for Combination Storm Drain and/or Underdrains, Type A, FM
0560	606-B001		1,044	Linear Feet	Guard Rail, Class A, Type 1
0570	606-D022		16	Each	Guard Rail, Bridge End Section, Type I
0580	606-E005		16	Each	Guard Rail, Terminal End Section, Flared
0590	615-A024	(S)	160	Linear Feet	Concrete Bridge End Barrier, 37.5"
0600	617-A001		44	Each	Right-of-Way Marker
0610	618-A001		1	Lump Sum	Maintenance of Traffic
0620	618-C001		1	Lump Sum	Construction and Removal of Detour Bridge
0630	618-E001		1,238	Linear Feet	Detour Bridge Piling
0640	618-F001		1	Lump Sum	Detour Bridge PDA Test Pile
0650	619-A1001		3	Mile	Temporary Traffic Stripe, Continuous White
0660	619-A2001		3	Mile	Temporary Traffic Stripe, Continuous Yellow

Line No.	Item Code	Adj Code	Quantity	Units	Description [Fixed Unit Price]
0670	619-C7001		335	Each	Two-Way Yellow Reflective High Performance Raised Marker
0680	619-D1001		338	Square Feet	Standard Roadside Construction Signs, Less than 10 Square Feet
0690	619-D2001		893	Square Feet	Standard Roadside Construction Signs, 10 Square Feet or More
0700	619-D3001		6	Each	Remove and Reset Signs, All Sizes
0710	619-F1001		48	Linear Feet	Concrete Median Barrier, Precast
0720	619-G4005		144	Linear Feet	Barricades, Type III, Single Faced
0730	619-G5001		136	Each	Free Standing Plastic Drums
0740	619-G7001		12	Each	Warning Lights, Type "B"
0750	619-K2004		12	Each	Installation and Removal of Guard Rail, Type I Bridge End Section
0760	619-K4001		12	Each	Installation and Removal of Guardrail, Terminal End Section
0770	620-A001		1	Lump Sum	Mobilization
0780	621-A001		1	Each	Field Laboratory
0790	626-C002		5	Mile	6" Thermoplastic Double Drop Edge Stripe, Continuous White
0800	626-D001		2	Mile	6" Thermoplastic Double Drop Traffic Stripe, Skip Yellow
0810	626-E001		2	Mile	6" Thermoplastic Double Drop Traffic Stripe, Continuous Yellow
0820	626-G002		137	Linear Feet	Thermoplastic Detail Stripe, White
0830	626-H005		212	Linear Feet	Thermoplastic Legend, White
0840	627-J001		205	Each	Two-Way Clear Reflective High Performance Raised Markers
0850	627-L001		206	Each	Two-Way Yellow Reflective High Performance Raised Markers
0860	630-A003		153	Square Feet	Standard Roadside Signs, Sheet Aluminum, 0.125" Thickness
0870	630-A005		35	Square Feet	Standard Roadside Signs, Sheet Aluminum, 0.1" Thickness
0880	630-C001		343	Linear Feet	Square Tube Posts, 4.0 lb/ft
0890	630-F006		96	Each	Delineators, Guard Rail, White
0900	630-G005		16	Each	Type 3 Object Markers, OM-3R or OM-3L, Post Mounted
0910	699-A001		1	Lump Sum	Roadway Construction Stakes
0920	815-A007	(S)	7,515	Ton	Loose Riprap, Size 300
0930	815-E001	(S)	2,898	Square Yard	Geotextile under Riprap
0940	815-F002	(S)	529	Ton	Sediment Control Stone
0950	907-234-A001		2,520	Linear Feet	Temporary Silt Fence
0960	907-253-A001		2,232	Linear Feet	Coir Fiber Baffle
0970	907-413-E001		3,348	Linear Feet	Sawing and Sealing Transverse Joints in Asphalt Pavement
0980	907-619-E3001		2	Each	Changeable Message Sign
0990	907-899-A001		1	Lump Sum	Railway-Highway Provisions

Line No.	Item Code	Adj Code	Quantity	Units	Description [Fixed Unit Price]
1000	907-906001		720	Hours	Trainees [\$5.00]
ALTERNATE GROUP AA NUMBER 1					
1010	304-F001	(GT)	20,450	Ton	3/4" and Down Crushed Stone Base
ALTERNATE GROUP AA NUMBER 2					
1020	304-F002	(GT)	20,450	Ton	Size 610 Crushed Stone Base
ALTERNATE GROUP AA NUMBER 3					
1030	304-F003	(GT)	20,450	Ton	Size 825B Crushed Stone Base
ALTERNATE GROUP BB NUMBER 1					
1040	605-W002	(GY)	128	Cubic Yard	Filter Material for Combination Storm Drain and/or Underdrains, Type B, FM
ALTERNATE GROUP BB NUMBER 2					
1050	605-W003	(GY)	128	Cubic Yard	Filter Material for Combination Storm Drain and/or Underdrains, Type C, FM
Bridge Items					
1060	501-K001		3,946	Square Yard	Transverse Grooving
1070	803-D007	(S)	1,650	Linear Feet	HP 14 x 89 Steel Piling
1080	803-P001	(S)	4,705	Linear Feet	24" Steel Pipe Piling, Wall Thickness 0.500"
1090	803-P003	(S)	810	Linear Feet	30" Steel Pipe Piling, Wall Thickness 0.500"
1100	803-P007	(S)	1,360	Linear Feet	18" Steel Pipe Piling, Wall Thickness 0.500"
1110	803-P008	(S)	510	Linear Feet	20" Steel Pipe Piling, Wall Thickness 0.500"
1120	804-C186	(S)	546	Linear Feet	110' Prestressed Concrete Beam, Type FIB-45
1130	804-C198	(S)	537	Linear Feet	90' Prestressed Concrete Beam, Type FIB-36
1140	804-C207	(S)	897	Linear Feet	150' Prestressed Concrete Beam, Type FIB-63
1150	804-C215	(S)	721	Linear Feet	145' Prestressed Concrete Beam, Type FIB-63
1160	804-C220	(S)	793	Linear Feet	81' Prestressed Concrete Beam, Type FIB-36
1170	804-C248	(S)	447	Linear Feet	76' Prestressed Concrete Beam, Type FIB-36
1180	804-C249	(S)	387	Linear Feet	66' Prestressed Concrete Beam, Type FIB-36
1190	804-C250	(S)	748	Linear Feet	152' Prestressed Concrete Beam, Type FIB-63
1200	804-C251	(S)	422	Linear Feet	86' Prestressed Concrete Beam, Type FIB-36
1210	804-C252	(S)	347	Linear Feet	71' Prestressed Concrete Beam, Type FIB-36
1220	805-A001	(S)	391,330	Pounds	Reinforcement
1230	805-C001	(S)	9,518	Pounds	Reinforcement, Corrosion Resistant
1240	813-A004	(S)	2,218	Linear Feet	Concrete Railing, 36"
1250	815-A007	(S)	5,640	Ton	Loose Riprap, Size 300
1260	815-D001	(S)	111	Cubic Yard	Concrete Slope Paving
1270	815-E001	(S)	4,512	Square Yard	Geotextile under Riprap

Line No.	Item Code	Adj Code	Quantity	Units	Description [Fixed Unit Price]
1280	907-607-PP001		290	Linear Feet	Safety Fence
1290	907-803-B001	(S)	4	Each	Conventional Static Pile Load Test [\$5,000.00]
1300	907-803-I003	(S)	2	Each	PDA Test Pile, HP Steel Pile
1310	907-803-I004	(S)	6	Each	PDA Test Pile, Steel Pipe Pile
1320	907-803-J001	(S)	8	Each	Pile Restrike
1330	907-804-A001	(S)	1,219	Cubic Yard	Bridge Concrete, Class BDY
1340	907-804-A002	(S)	620	Cubic Yard	Bridge Concrete, Class AA
1350	907-823-A001		73	Linear Feet	Preformed Joint Seal, Type I
1360	907-823-A002		252	Linear Feet	Preformed Joint Seal, Type II

ADDENDUM

STATE	PROJECT NO.
MISS.	STBG-2901-00(025)

WKG. NO. _____ SH. NO. _____

DESCRIPTION OF SHEET

ROADWAY	DESCRIPTION OF SHEET	WKG. NO.	SH. NO.
TITLE SHEET		1	
DETAILED INDEX & GENERAL NOTES (4)			
DETAILED INDEX		DI-1	
DETAILED INDEX		DI-2	
GENERAL NOTES		GN-1	
GENERAL NOTES		GN-2	
TYPICAL SECTION SHEETS (4)			
TYPICAL SECTION - US 51 RECONSTRUCTION		TS-1	
TYPICAL SECTION - US 51 MILL & OVERLAY AND BRIDGE		TS-2	
TYPICAL SECTION - US 51 DETOUR		TS-3	
TYPICAL SECTION - US 51 CONSTRUCTION & REMOVAL OF DETOUR ROAD		TS-4	
SUMMARY OF QUANTITIES & ESTIMATED QUANTITIES (14)			
SUMMARY OF QUANTITIES		SQ-1	10
SUMMARY OF QUANTITIES		SQ-2	11
SUMMARY OF QUANTITIES		SQ-3	12
ESTIMATED QUANTITIES - REMOVAL		EQ-1	13
ESTIMATED QUANTITIES - EARTHWORKS		EQ-2	14
ESTIMATED QUANTITIES - EROSION CONTROL		EQ-3	15
ESTIMATED QUANTITIES - DRAINAGE STRUCTURES		EQ-4	16
ESTIMATED QUANTITIES - DRIVEWAYS & SIDE DRAINS		EQ-5	17
ESTIMATED QUANTITIES - GUARDRAIL, BRIDGE END PAVEMENT, AND DELINEATORS		EQ-6	18
ESTIMATED QUANTITIES - PAVEMENT MARKINGS		EQ-7	19
ESTIMATED QUANTITIES - STANDARD ROADSIDE ASSEMBLIES		EQ-8	20
ESTIMATED QUANTITIES - STANDARD ROADSIDE & DIRECTIONAL SIGNS		EQ-9	21
ESTIMATED QUANTITIES - TRAFFIC CONTROL ITEMS		EQ-10	22
ESTIMATED QUANTITIES - TRAFFIC CONTROL SIGNS		EQ-11	23
PLAN AND PROFILE SHEETS (9)			
US 51 - SITE 1 - STA. 314+40.000 TO STA. 334+85.000		3	24
US 51 - SITE 1 DETOUR - STA. 1314+40.000 TO STA. 1334+91.427		3A	25
US 51 - SITE 2 - STA. 440+71.960 TO STA. 457+47.684		4	26
US 51 - SITE 2 DETOUR - STA. 1440+71.960 TO STA. 1457+48.289		4A	27
US 51 - SITE 3 - STA. 470+00.000 TO STA. 489+50.000		5	28
US 51 - SITE 4 - STA. 515+15.000 TO STA. 543+60.013		6	29
US 51 - SITE 4 DETOUR - STA. 1515+15.000 TO STA. 1543+66.441		6A	30
US 51 - MILL & OVERLAY LIMITS - STA. 457+47.684 TO STA. 470+00		7	31
US 51 - MILL & OVERLAY LIMITS - STA. 489+50 TO STA. 515+15		8	32
EROSION CONTROL SHEETS (10)			
US 51 - SITE 1 - STA. 314+40.000 TO STA. 334+85.000		ECP-3	33
US 51 - SITE 1 DETOUR - STA. 1314+40.000 TO STA. 1334+91.427		ECP-3A	34
RIPARIAN BUFFER - US 51 - SITE 1		ECP-RB-3	35
US 51 - SITE 2 - STA. 440+71.960 TO STA. 457+47.684		ECP-4	36
US 51 - SITE 2 DETOUR - STA. 1440+71.960 TO STA. 1457+48.289		ECP-4A	37
RIPARIAN BUFFER - US 51 - SITE 2		ECP-RB-4	38
US 51 - SITE 3 - STA. 470+00.000 TO STA. 489+50.000		ECP-5	39
US 51 - SITE 4 - STA. 515+15.000 TO STA. 543+60.013		ECP-6	40
US 51 - SITE 4 DETOUR - STA. 1515+15.000 TO STA. 1543+66.441		ECP-6A	41
RIPARIAN BUFFER - US 51 - SITE 4		ECP-RB-6	42
CONSTRUCTION SIGNING (2)			
CONSTRUCTION SIGNING - US 51 SITE 1		CS-1	43
CONSTRUCTION SIGNING - US 51 SITES 2, 3 & 4		CS-2	44

ROADWAY	DESCRIPTION OF SHEET	WKG. NO.	SH. NO.
TRAFFIC CONTROL PLAN (14)			
TRAFFIC CONTROL PLAN - CONSTRUCTION PHASING NOTES		TC-GN1	45
CHANGEABLE MESSAGE SIGN DETAIL - PHASE 4		CMS-1	46
DETOUR SIGNING PLAN - PHASE 4		DSP-1	47
TRAFFIC CONTROL PLAN - TYPICAL SECTIONS SITES 1, 2, AND 4		TC-TS1	48
TRAFFIC CONTROL PLAN - PHASE 1 - SITE 1		TC-1	49
TRAFFIC CONTROL PLAN - PHASE 1 - SITE 2		TC-2	50
TRAFFIC CONTROL PLAN - PHASE 1 - SITE 4		TC-3	51
TRAFFIC CONTROL PLAN - PHASE 2 - SITE 1		TC-4	52
TRAFFIC CONTROL PLAN - PHASE 2 - SITE 2		TC-5	53
TRAFFIC CONTROL PLAN - PHASE 2 - SITE 4		TC-6	54
TRAFFIC CONTROL PLAN - PHASE 3 - SITE 1		TC-7	55
TRAFFIC CONTROL PLAN - PHASE 3 - SITE 2		TC-8	56
TRAFFIC CONTROL PLAN - PHASE 3 - SITE 4		TC-9	57
TRAFFIC CONTROL PLAN - PHASE 4 - SITE 3		TC-10	58
PAVEMENT MARKING DETAILS (9)			
PAVEMENT MARKING DETAIL - US 51 - BOP TO STA. 324+50		PMD-1	59
PAVEMENT MARKING DETAIL - US 51 - STA. 324+50 TO STA. 334+85		PMD-2	60
PAVEMENT MARKING DETAIL - US 51 - STA. 439+72 TO STA. 454+50		PMD-3	61
PAVEMENT MARKING DETAIL - US 51 - STA. 454+50 TO STA. 469+50		PMD-4	62
PAVEMENT MARKING DETAIL - US 51 - STA. 469+50 TO STA. 484+50		PMD-5	63
PAVEMENT MARKING DETAIL - US 51 - STA. 484+50 TO STA. 499+50		PMD-6	64
PAVEMENT MARKING DETAIL - US 51 - STA. 499+50 TO STA. 514+50		PMD-7	65
PAVEMENT MARKING DETAIL - US 51 - STA. 514+50 TO STA. 529+50		PMD-8	66
PAVEMENT MARKING DETAIL - US 51 - STA. 529+50 TO EOP		PMD-9	67
MISCELLANEOUS ROADWAY ITEMS (10)			
VEGETATION SCHEDULE		VS-1	68
CONTROL POINT LAYOUT SHEET		CPL-1	69
RIGHT OF WAY MARKERS		RC-1	70
TEMPORARY EASEMENT COORDINATES		RC-2	71
PERMANENT EASEMENT COORDINATES		RC-3	72
SIGN SUPPORT HARDWARE - 2.5" SQUARE POST		TSS-1	73
SIGN SUPPORT HARDWARE - 2.0" SQUARE POST		TSS-2	74
BRIDGE END PAVEMENT WITH RAIL, OVERLAY, AND SLEEPER SLAB (NEW CONSTRUCTION)		SD-BE-1	75
37.5" BRIDGE END PAVEMENT RAIL		SD-BER-1	76
GUARDRAIL SPECIAL DESIGN SHEET		MTSD	77
PERMANENT SIGNING PLAN (7)			
PERMANENT SIGNING PLAN - US 51 - BOP TO STA. 328+50		PSP-1	1001
PERMANENT SIGNING PLAN - US 51 - STA. 328+50 TO STA. 343+50		PSP-2	1002
PERMANENT SIGNING PLAN - US 51 - STA. 433+50 TO STA. 448+50		PSP-3	1003
PERMANENT SIGNING PLAN - US 51 - STA. 448+50 TO STA. 464+50		PSP-4	1004
PERMANENT SIGNING PLAN - US 51 - STA. 464+50 TO STA. 478+50		PSP-5	1005
PERMANENT SIGNING PLAN - US 51 - STA. 478+50 TO STA. 493+50		PSP-6	1006
PERMANENT SIGNING PLAN - US 51 - STA. 493+50 TO EOP		PSP-7	1007

PS & E PLANS-DATE 10/24/22	
FMS CON. # 103332/301000	
REVISIONS	
DATE	SHEET NO. BY
1/12/23	6, 7, 8, 9, 10, 11, 12 MJ
11/30/23	10, 75 MJ
1/23/24	10 MJ
3/26/24	10, 11, 15, 24, 26, 29 MJ

MISSISSIPPI DEPARTMENT OF TRANSPORTATION
DETAILED INDEX

PROJ. NO.: STBG-2901-00(025)
 COUNTY: YALOBUSHA

FILE NAME: D:\GDD
 DESIGN TEAM: GRESHAM, SMITH - CHECKED _____ DATE _____

WORKING NUMBER: DI-1
 SHEET NUMBER: 2



ADDENDUM

STATE	PROJECT NO.
MISS	STBG-2901-00(025)

SUMMARY OF QUANTITIES (SHEET 1)


PAY ITEM NO.	PAY ITEM	UNIT	YALOBUSHA : 103332-301000	
			Prelim	Final
	REMOVAL ITEMS			
201-A001	Clearing and Grubbing	LS	1	
201-B001	Clearing and Grubbing	ACRE	5	
202-A001	Removal of Obstructions	LS	1	
202-B007	Removal of Asphalt Pavement, All Depths	SY	16,102	
202-B023	Removal of Bridge	EA	4	
202-B069	Removal of Concrete Pavement w/ Variable Depth Overlay	SY	20,782	
202-B136	Removal of Guard Rail	LF	2,585	
202-B191	Removal of Pipe, 8" And Above	LF	427	
202-B240	Removal of Traffic Stripe	LF	160	
	EARTHWORK ITEMS			
203-A001	Unclassified Excavation, FM, AH	CY	75,080	
203-EX020	Borrow Excavation, AH, FME, Class B9	CY	24,846	
203-G001	Excess Excavation, FM, AH	CY	25,369	
206-A001	Structure Excavation	CY	185	
209-A005	Geotextile Stabilization, Type V, Non-Woven	SY	18,249	
	ROADSIDE DEVELOPMENT ITEMS			
213-C001	Superphosphate	TON	26	
216-A001	Solid Sodding	SY	338	
217-A001	Ditch Liner	SY	6,723	
219-A001	Watering	KGAL	7	
220-A001	Insect Pest Control	ACRE	33	
221-A001	Concrete Paved Ditch	CY	61	
223-A001	Mowing	ACRE	66	
225-A001	Grassing	ACRE	51	
225-B001	Agricultural Limestone	TON	26	
225-C001	Mulch, Vegetative Mulch	TON	102	
226-A001	Temporary Grassing	ACRE	51	
907-234-A001	Temporary Silt Fence	LF	2,520	
235-A001	Temporary Erosion Checks	EA	130	
236-A008	Silt Basin, Type D	EA	10	
237-A002	Wattles, 20"	LF	2,520	
239-A001	Temporary Slope Drains	LF	815	
245-A001	Silt Dike	LF	520	
246-B001	Rockbags	EA	445	
249-A001	Riprap for Erosion Control	TON	468	
249-B001	Remove and Reset Riprap	CY	173	
907-253-A001	Coir Fiber Baffle	LF	2,232	
	BASE ITEMS			
304-B004	Granular Material, Class 5, Group D	TON	15,350	

- ① FOR TEMPORARY EASEMENTS.
- ② EXISTING BRIDGES TO BE REMOVED: BRIDGE NO. 224.7 SPANS APPROX.270' BRIDGE NO. 227.0 SPANS APPROX.90' BRIDGE NO. 227.6 SPANS APPROX.170' BRIDGE NO. 228.6 SPANS APPROX.210'
- ③ INCLUDES TERMINAL SECTIONS, BRIDGE END SECTIONS, POSTS, AND OTHER APPURTENANCES.
- ④ 56 CY FOR PAVED FLUMES AND PAVED APRONS. 5 CY FOR EDGE DRAIN OUTLETS.
- ⑤ FOR STRIPING ON OAK STREET/CR 272.
- ⑥ TO BE USED AS DIRECTED BY THE PROJECT ENGINEER.
- ⑦ FOR USE WITHIN THE RIGHT-OF-WAY.
- ⑧ REMOVAL OF DELTA COMMUNITY FARMS SIGN AND FENCING WITHIN ROW ACQUISITION AREA.

- ⑦ ⚠
- ① ⚠
- ⑧ ⚠
- ② ⚠
- ③ ⚠
- ⑤ ⚠
- ④ ⚠
- ⑥ ⚠
- ① ⚠
- ④ ⚠
- ⑥ ⚠
- ① ⚠
- ④ ⚠

Date	Revision
03/26/2024	REVISED QUANTITY.
01/23/2024	ADDED PAY ITEM, QUANTITY, AND FOOTNOTE.
11/30/2023	ADDED PAY ITEM, QUANTITY, AND FOOTNOTE.
06/15/2023	ADDED PAY ITEM, ADJUSTED QUANTITY.

MISSISSIPPI DEPARTMENT OF TRANSPORTATION
SUMMARY OF QUANTITIES



PROJ NO: STBG-2901-00(025)
 COUNTY: YALOBUSHA

FILENAME: SQS
 Design Team: GRESHAM SMITH

Working Number: SQ-1
 Sheet Number: 10

Date: 3/26/2024
 Checked: _____

ADDENDUM

STATE	PROJECT NO.
MISS	STBG-2901-00(025)

SUMMARY OF QUANTITIES (SHEET 2)

PAY ITEM NO.	PAY ITEM	UNIT	YALOBUSHA : 103332-301000	
			Prelim	Final
304-F001	3/4" and Down Crushed Stone Base	TON	20,450	
	OR			
304-F002	Size 610 Crushed Stone Base	TON	20,450	
	OR			
304-F003	Size 825B Crushed Stone Base	TON	20,450	
	PAVEMENT ITEMS			
403-A003	12.5-mm, ST, Asphalt Pavement	TON	2,593	
403-A006	19-mm, ST, Asphalt Pavement	TON	5,151	
403-A015	9.5-mm, ST, Asphalt Pavement	TON	4,214	
403-C003	19-mm, ST, Asphalt Pavement, Trench Widening	TON	280	
406-D001	Fine Milling of Bituminous Pavement, All Depths	SY	10,180	
407-A001	Asphalt for Tack Coat	GAL	4,399	
413-E001	Sawing and Sealing Transverse Joints in Asphalt Pavement	LF	3,492	
423-A001	Rumble Strips, Ground In	MI	2	
502-A001	Reinforced Cement Concrete Bridge End Pavement	SY	1,080	
503-C010	Saw Cut, Full Depth	LF	1,292	
	DRAINAGE ITEMS			
601-B001	Class "B" Structural Concrete, Minor Structures	CY	2	
603-ALT003	18" Type A Alternate Pipe	LF	360	
603-ALT005	22" x 13" Type A Alternate Pipe	LF	40	
603-ALT008	29" x 18" Type A Alternate Pipe	LF	40	
603-ALT009	30" Type A Alternate Pipe	LF	40	
603-CA011	18" Reinforced Concrete Pipe, Class III	LF	704	
603-CA026	24" Reinforced Concrete Pipe, Class III	LF	64	
603-CB003	18" Reinforced Concrete End Section	EA	20	
603-CB004	24" Reinforced Concrete End Section	EA	2	
	UNDERDRAIN ITEMS			
605-AA002	Geotextile for Subsurface Drainage, Type V	SY	311	
605-O002	4" Perforated Sewer Pipe for Underdrains, SDR 23.5	LF	472	
605-P002	4" Non-perforated Sewer Pipe for Underdrains, SDR 23.5	LF	88	
605-W001	Filter Material for Combination Storm Drain and/or Underdrains, Type A, FM	CY	21	
605-W002	Filter Material for Combination Storm Drain and/or Underdrains, Type B, FM	CY	192	
	OR			
605-W003	Filter Material for Combination Storm Drain and/or Underdrains, Type C, FM	CY	192	
	GUARD RAIL ITEMS			
606-B001	Guard Rail, Class A, Type 1	LF	1,044	
606-D022	Guard Rail, Bridge End Section, Type I	EA	16	
606-E005	Guard Rail, Terminal End Section, Flared	EA	16	
	INCIDENTAL CONSTRUCTION ITEMS			

- ① INCLUDES 15 TONS FOR DRIVEWAY PAVED APRONS.
- ② ALTERNATE A: ZINC COATED METAL PIPE, 16 GAUGE 2 2/3" X 1/2" CORRUGATION) OR ALUMINUM COATED CORRUGATED METAL PIPE, 16 GAUGE (2 2/3" X 1/2" CORRUGATION) OR REINFORCED CONCRETE PIPE, CLASS "III" OR CORRUGATED POLYETHYLENE PIPE.
- ③ INCLUDES 192 LF FOR BRIDGE END PAVEMENT ON EXISTING US 51, AND 1100 LF FOR REMOVAL OF DETOUR PAVEMENT
- ④ FOR BRIDGE END PAVEMENT.
- ⑤ INCLUDES 21 TONS FOR DRIVEWAY PAVED APRONS.
- ⑥ QUANTITY INCLUDES 20% SHRINKAGE FACTOR.
- ⑦ 3060 LF FOR MILL AND OVERLAY AND 432 LF FOR BRIDGE END PAVEMENT.

⑥ ④

⑥ ④

⑥ ④

⑥ ④

⑤

①

①

①

③

②

②

②

②

④

④

④

④

④

④


④

④

④

ADDED PAY ITEM, ADJUSTED QUANTITY.	06/15/2023	#
REVISED QUANTITY.	03/26/2024	#
Revision		By

MISSISSIPPI DEPARTMENT OF TRANSPORTATION
SUMMARY OF QUANTITIES



DATE: 3/26/2024
 Working Number
SQ-2

PROJ NO: STBG-2901-00(025)
 COUNTY: YALOBUSHA

FILENAME: SQS
 Design Team: GRESHAM SMITH
 Checked

Sheet Number
11

Date 3/26/2024

ADDENDUM

STATE	PROJECT NO.
MISS	STBG-2901-00(025)


SUMMARY OF QUANTITIES (SHEET 3)

PAY ITEM NO.	PAY ITEM	UNIT	YALOBUSHA : 103332-301000	
			Prelim	Final
615-A024	Concrete Bridge End Barrier, 37.5"	LF	280	
617-A001	Right-of-Way Marker	EA	44	
	TRAFFIC CONTROL ITEMS			
618-A001	Maintenance of Traffic	LS	1	
618-C001	Construction and Removal of Detour Bridge	LS	1	
618-E001	Detour Bridge Piling	LF	1,238	
618-F001	Detour Bridge PDA Test Pile	LS	1	
619-A1001	Temporary Traffic Stripe, Continuous White	MI	3	
619-A2001	Temporary Traffic Stripe, Continuous Yellow	MI	3	
619-C7001	Two-Way Yellow Reflective High Performance Raised Marker	EA	335	
619-D1001	Standard Roadside Construction Signs, Less than 10 Square Feet	SF	338	
619-D2001	Standard Roadside Construction Signs, 10 Square Feet or More	SF	893	
619-D3001	Remove and Reset Signs, All Sizes	EA	6	
907-619-E3001	Changeable Message Sign	EA	2	
619-F1001	Concrete Median Barrier, Precast	LF	48	
619-G4005	Barricades, Type III, Single Faced	LF	144	
619-G5001	Free Standing Plastic Drums	EA	136	
619-G7001	Warning Lights, Type "B"	EA	12	
619-K2004	Installation and Removal of Guard Rail, Type I Bridge End Section	EA	12	
619-K4001	Installation and Removal of Guardrail, Terminal End Section	EA	12	
620-A001	Mobilization	LS	1	
621-A001	Field Laboratory	EA	1	
627-J001	Two-Way Clear Reflective High Performance Raised Markers	EA	180	
	PAVEMENT MARKING ITEMS			
626-C002	6" Thermoplastic Double Drop Edge Stripe, Continuous White	MI	5	
626-D001	6" Thermoplastic Double Drop Traffic Stripe, Skip Yellow	MI	2	
626-E001	6" Thermoplastic Double Drop Traffic Stripe, Continuous Yellow	MI	2	
626-G002	Thermoplastic Detail Stripe, White	LF	137	
626-H005	Thermoplastic Legend, White	LF	212	
627-J001	Two-Way Clear Reflective High Performance Raised Markers	EA	25	
627-L001	Two-Way Yellow Reflective High Performance Raised Markers	EA	206	
	ROADSIDE SIGNS AND DELINEATORS			
630-A003	Standard Roadside Signs, Sheet Aluminum, 0.125" Thickness	SF	153	
630-A005	Standard Roadside Signs, Sheet Aluminum, 0.1" Thickness	SF	35	
630-C001	Square Tube Posts, 4.0 lb/ft	LF	343	
630-F006	Delineators, Guard Rail, White	EA	96	
630-G005	Type 3 Object Markers, OM-3R or OM-3L, Post Mounted	EA	16	
	MISCELLANEOUS ITEMS			
699-A001	Roadway Construction Stakes	LS	1	
815-A007	Loose Riprap, Size 300	TON	7,515	
815-E001	Geotextile under Riprap	SY	2,898	
815-F002	Sediment Control Stone	TON	529	
907-899-A001	Railway-Highway Provisions	LS	1	

- ① REFLECTIVE SHEETING SHALL BE PLACED ON ALL SQUARE TUBE POSTS. REFLECTIVE SHEETING COLORING SHALL BE AS FOLLOWS: RED - STOP SIGNS, YELLOW - ADVANCED WARNING SIGNS, WHITE - SPEED LIMIT SIGNS. REFLECTIVE SHEETING IS COST ABSORBED. INCLUDES OMNI-SLEEVE AND ANCHOR.
- ② 3603 CY FOR TYPE D SILT BASINS
- ③ FOR TYPE D SILT BASINS
- ④ INCLUDES THREE DETOUR BRIDGES.
- ⑤ 2216 LF FOR CONCRETE BRIDGE DECKS.
- ⑥ 304 LF FOR CONCRETE BRIDGE DECKS.
- ⑦ 1610 LF FOR CONCRETE BRIDGE DECKS.

ADDED PAY ITEM, ADJUSTED QUANTITY	DATE	BY
Revision		

MISSISSIPPI DEPARTMENT OF TRANSPORTATION
SUMMARY OF QUANTITIES



PROJ NO: STBG-2901-00(025)
 COUNTY: YALOBUSHA

Working Number: SQ-3

Design Team: GRESHAM SMITH
 Checked: _____
 Date: 3/26/2024

FILENAME: SQS
 Sheet Number: 12

ADDENDUM

FMS CON: 103332 / 301000
 STATE PROJECT NO.
 MISS. STBG-2901-00(025)

ESTIMATED EROSION CONTROL ITEMS

WK. SH. NO.	DITCH LINER	CONCRETE PAVED DITCH		SOLID SOD	300# RIP RAP	GEOTEXTILE	REMARKS
3	2499△	14	84	1718	1273		
4	2115△	11	64	2194	1625		
5		20	121				
6	2108△	11	69				
UNITS		SQ. YD.	CU. YD.	SQ. YD.	TON	SQ. YD.	
TOTALS		6723△	57	338	3912	2899	

TYPE D SILT BASIN

WK SHEET	STATION	OFFSET	SILT BASIN, TYPE D		300# RIP RAP	SEDIMENT CONTROL STONE	COIR FIBER BAFFLE	DRAINAGE AREA (AC)	REMARKS
			DAM LENGTH	DAM HEIGHT					
3	322+10	LT	35	3	63	13	131	1.44	
3	324+15	RT	45	5	203	34	169	2.47	
3	324+50	LT	40	6	259	38	150	2.47	
4	445+75	RT	50	6	324	47	188	3.09	
4	448+25	RT	50	6	324	47	188	3.08	
4	448+75	LT	75	6	486	70	281	5.21	
6	525+84	LT	75	6	486	70	281	5.21	
6	525+40	RT	75	6	486	70	281	5.21	
6	527+50	LT	75	6	486	70	281	5.21	
6	528+70	RT	75	6	486	70	281	5.21	
UNITS		EACH		TON	TON	TON	LF		
TOTALS		10		3603	529	2232			

MISSISSIPPI DEPARTMENT OF TRANSPORTATION
ESTIMATED QUANTITIES
EROSION CONTROL

PROJ. NO.: STBG-2901-00(025)
 COUNTY: YALOBUSHA

DATE: 3/28/2024
 WORKING NUMBER: EQ-3
 SHEET NUMBER: 15

FILE NAME: eq.dgn
 DESIGN TEAM: GRESHAM, SMITH - CHECKED

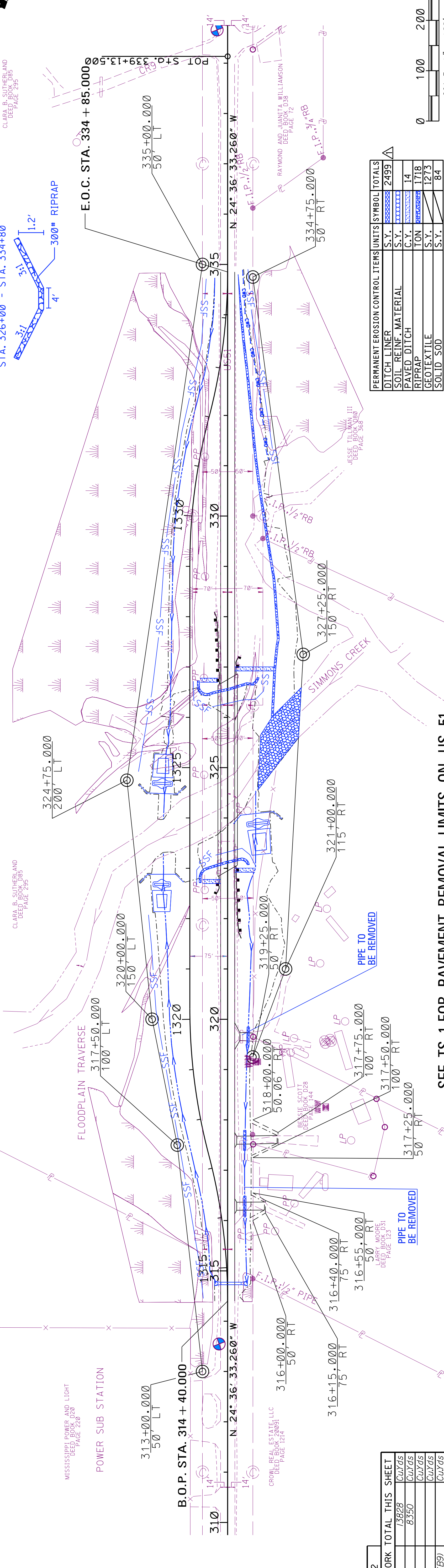
BY	DATE	REVISION
MJ	3/28/24	REVISED QUANTITY

ADDENDUM

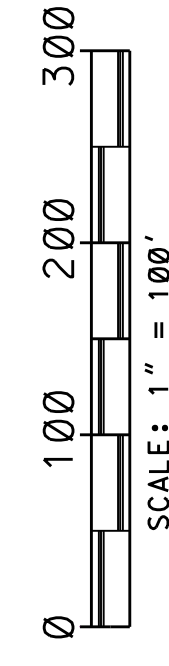
FMS CON: 1033332/301000

STATE PROJECT NO.
MISS. STBG-2901-00(025)

REVISIONS	DATE	BY	REVISED QUANTITY
	3/26/24	MJ	



PERMANENT EROSION CONTROL ITEMS	UNITS	SYMBOL	TOTALS
DITCH LINER	S.Y.	[Symbol]	2499
SOIL REINF. MATERIAL	S.Y.	[Symbol]	
PAVED DITCH	C.Y.	[Symbol]	14
RIPRAP	TON	[Symbol]	1718
GEOTEXTILE	S.Y.	[Symbol]	1213
SOLID SOD	S.Y.	[Symbol]	84

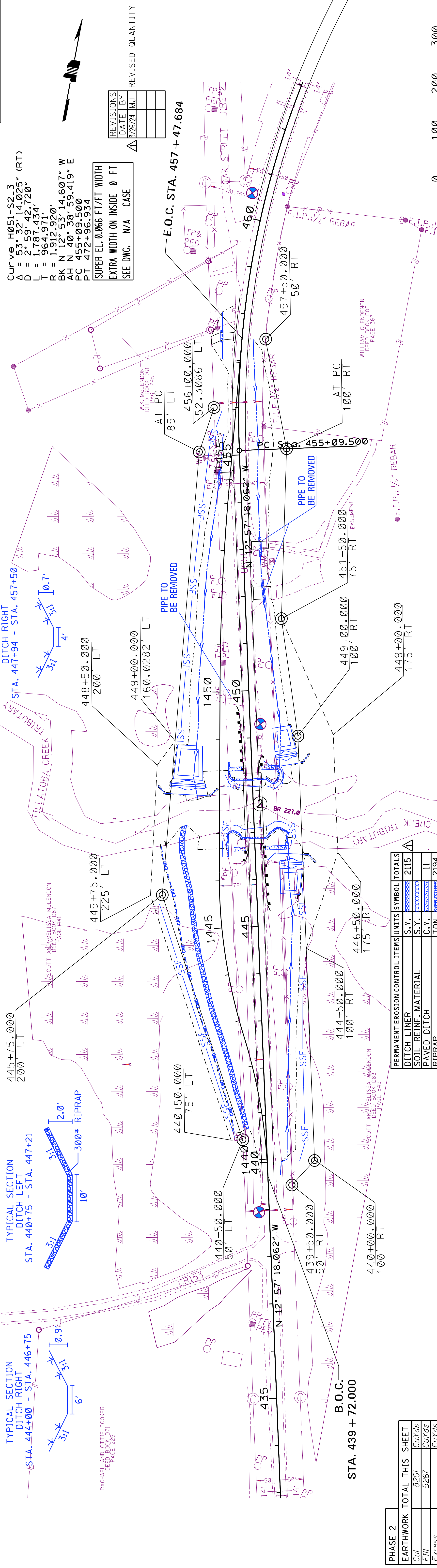


SEE TS-1 FOR PAVEMENT REMOVAL LIMITS ON US 51.

Station	Description	Grade	Phase	Math Grade	Phase 2	Graphic Grade	Other Notes
290	STA. 314 + 75 64' - 24" ROP REQ'D 2 - 24" FES REQ'D US EL (RT) 261.50 DS FL (LT) 261.14	267.23		267.25		267.23	
	STA. 316 + 28 RT. 16' - RAMP REQ'D 40' - 29"X18" ALT. PIPE REQ'D.	267.22		267.26		267.22	
	STA. 317 + 60 RT. 16' - RAMP REQ'D 40' - 18" ALT. PIPE REQ'D.	267.23		267.25		267.23	
	STA. 319 + 66 RT. 16' - RAMP REQ'D 40' - 18" ALT. PIPE REQ'D.	267.30		267.24		267.25	
	B.O.P. STA. 314 + 40.000	267.33		267.34		267.33	
	STA. 322 + 73.97 87.50' GUARDRAIL REQ'D (87.50' LT.) 1 - TERMINAL END SECTIONS REQ'D 1 - TYPE "A" BRIDGE END SECTIONS REQ'D C = 68.15'; B = 87.50'; 36' - TYPE "B" PAVED FLUME (LT.)	267.34	GRAPHIC GRADE	267.35		267.34	
	VPI 315 + 96.460 EL. 267.34	267.34		267.33		267.34	
	VPC 316 + 50.000 EL. 267.405	267.37		267.35		267.37	
	VPI 318 + 00.000 EL. 267.60	267.60		267.78		267.60	
	K = 186 300.000' V.C.	267.74		267.96		267.74	
	VPI 319 + 50.000 EL. 270.210	268.14		267.96		268.14	
	VPC 321 + 00.000 EL. 272.820	268.59		272.82		268.59	
	STA. 322 + 93.28 25.00' GUARDRAIL REQ'D (25.00' RT.) 1 - TERMINAL END SECTIONS REQ'D 1 - TYPE "A" BRIDGE END SECTIONS REQ'D C = 68.15'; D = 25.00' 40' - TYPE "B" PAVED FLUME (RT.)	268.45		271.95		268.45	
	VPI 324 + 50.000 EL. 278.91	255.36	MATH GRADE	276.22		255.36	
	K = 227 700.000' V.C.	265.38		276.26		265.38	
	STA. 323 + 54 TO STA. 326 + 24 EXIST. BRIDGE (TO BE REMOVED)	268.34		275.74		268.34	
	END BRIDGE A STA. 326 + 76.12	268.27		275.34		268.27	
	VPT 328 + 00.000 EL. 274.220	268.40		274.22		268.40	
	STA. 324 + 50 LT. 1 - SILT BASIN REQ'D. 40' X 6', TYPE D D.A. = 2.47 ACRES	268.64	8350 CY FILL	272.21		268.64	
	VPC 330 + 00.000 EL. 271.540	269.06		270.94		269.06	
	VPI 331 + 00.000 EL. 270.20	269.15		270.47		269.15	
	K = 183 200.000' V.C.	269.26		270.14		269.26	
	VPT 332 + 00.000 EL. 269.950	269.37		269.95		269.37	
	STA. 326 + 76.91 87.50' GUARDRAIL REQ'D (87.50' LT.) 1 - TERMINAL END SECTIONS REQ'D 1 - TYPE "A" BRIDGE END SECTIONS REQ'D A = 60.65'; B = 87.50' 35' - TYPE "B" PAVED FLUME (LT.)	269.43		269.83		269.43	
	VPI 333 + 49.954 EL. 269.58	269.58		269.70		269.58	
	E.O.C. STA. 334 + 85.000 270.27	270.01		270.01		270.01	
	STA. 326 + 95.65 25.00' GUARDRAIL REQ'D (25.00' RT.) 1 - TERMINAL END SECTIONS REQ'D 1 - TYPE "A" BRIDGE END SECTIONS REQ'D C = 68.15'; D = 25.00' 78' - TYPE "B" PAVED FLUME (RT.)	269.50		269.70		269.50	
	VPI 333 + 49.954 EL. 269.58	269.73	GRAPHIC GRADE	269.73		269.73	
	E.O.C. STA. 334 + 85.000	270.41		270.27		270.41	
	270.27	270.01		270.01		270.01	
290		284.15		282.48		284.15	

STATE	PROJECT NO.
MISS.	STBG-2901-00(025)

ADDENDUM



SEE TS-1 FOR PAVEMENT REMOVAL LIMITS ON US 51.

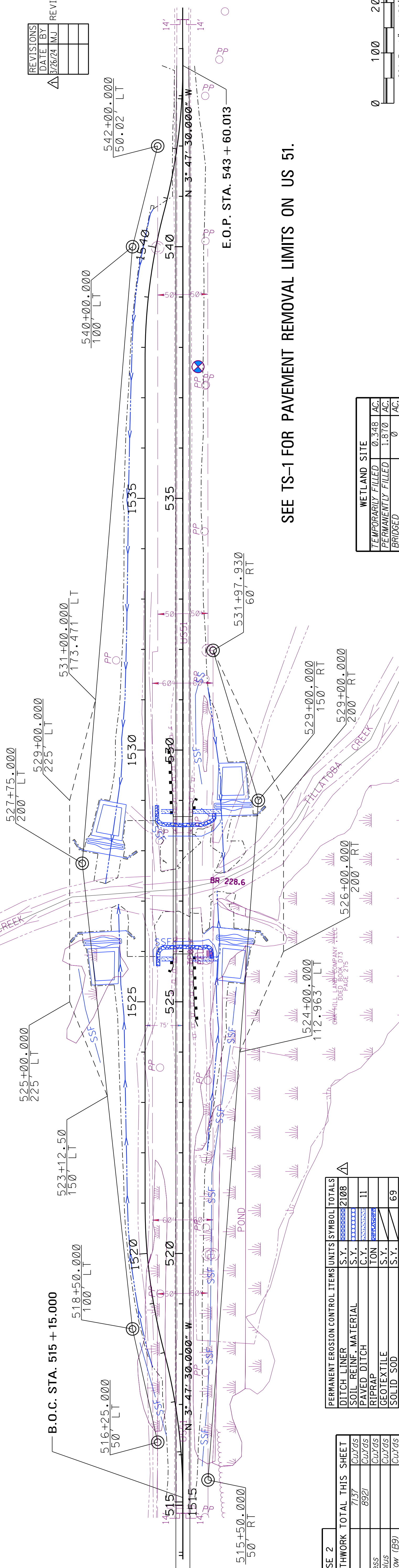
Sta.	Station	Grade	Notes
290	433	271.76	B.O.C. STA. 439 + 72.000
280	434	271.75	
270	435	271.75	
260	436	271.75	
250	437	271.75	
240	438	271.75	
230	439	271.75	
230	440	271.75	
230	441	271.75	
230	442	271.75	
230	443	271.75	
230	444	271.75	
230	445	271.75	
230	446	271.75	
230	447	271.75	
230	448	271.75	
230	449	271.75	
230	450	271.75	
230	451	271.75	
230	452	271.75	
230	453	271.75	
230	454	271.75	
230	455	271.75	
230	456	271.75	
230	457	271.75	
230	458	271.75	
230	459	271.75	
230	460	271.75	
230	461	271.75	
230	462	271.75	

ADDENDUM

OAK HILL LAND COMPANY, LLC
DEED BOOK 073
PAGE 215



REVISIONS	DATE	BY	REVISED QUANTITY
△	8/26/24	MJ	



SEE TS-1 FOR PAVEMENT REMOVAL LIMITS ON US 51.

PERMANENT EROSION CONTROL ITEMS	UNITS	SYMBOL	TOTALS
DITCH LINER	S.Y.		2108
SOIL REINF. MATERIAL	S.Y.		11
PAVED DITCH	TON		69
RIPRAP	S.Y.		
GEOTEXTILE	S.Y.		
SOLID SOD	S.Y.		

WETLAND SITE	TEMPORARILY FILLED	PERMANENTLY FILLED	BRIDGED
	0.348 AC.	1.870 AC.	0 AC.

PHASE 2	EARTHWORK TOTAL THIS SHEET	7137	8921	Curds	Curds	Curds	Curds
Cut	7137	8921	Curds	Curds	Curds	Curds	Curds
Fill	8921	Curds	Curds	Curds	Curds	Curds	Curds
Excess	Curds	Curds	Curds	Curds	Curds	Curds	Curds
Surplus	Curds	Curds	Curds	Curds	Curds	Curds	Curds
Borrow (B9)	Curds	Curds	Curds	Curds	Curds	Curds	Curds

Station	Graphic Grade	Math Grade	Notes	Station	Graphic Grade	Math Grade	Notes
280	261.65	261.65	B.O.C. STA. 515 + 15.000	220	261.66	261.66	261.65
270	261.65	261.65	VPC 518 + 50.000 EL. 261.666	210	261.65	261.65	261.65
260	261.65	261.65	VPT 519 + 50.000 EL. 261.960	200	261.56	261.56	261.56
250	261.65	261.65	K = 222 EL. 261.70 100,000 V.C.	190	261.56	261.56	261.56
240	261.65	261.65	K = 196 EL. 265.99 200,000 V.C.	180	261.56	261.56	261.56
230	261.65	261.65	K = 196 EL. 265.99 200,000 V.C.	170	261.56	261.56	261.56
220	261.65	261.65	K = 217 EL. 262.12 100,000 V.C.	160	261.56	261.56	261.56
210	261.65	261.65	K = 217 EL. 262.12 100,000 V.C.	150	261.56	261.56	261.56
200	261.65	261.65	K = 217 EL. 262.12 100,000 V.C.	140	261.56	261.56	261.56
190	261.65	261.65	K = 217 EL. 262.12 100,000 V.C.	130	261.56	261.56	261.56
180	261.65	261.65	K = 217 EL. 262.12 100,000 V.C.	120	261.56	261.56	261.56
170	261.65	261.65	K = 217 EL. 262.12 100,000 V.C.	110	261.56	261.56	261.56
160	261.65	261.65	K = 217 EL. 262.12 100,000 V.C.	100	261.56	261.56	261.56
150	261.65	261.65	K = 217 EL. 262.12 100,000 V.C.	90	261.56	261.56	261.56
140	261.65	261.65	K = 217 EL. 262.12 100,000 V.C.	80	261.56	261.56	261.56
130	261.65	261.65	K = 217 EL. 262.12 100,000 V.C.	70	261.56	261.56	261.56
120	261.65	261.65	K = 217 EL. 262.12 100,000 V.C.	60	261.56	261.56	261.56
110	261.65	261.65	K = 217 EL. 262.12 100,000 V.C.	50	261.56	261.56	261.56
100	261.65	261.65	K = 217 EL. 262.12 100,000 V.C.	40	261.56	261.56	261.56
90	261.65	261.65	K = 217 EL. 262.12 100,000 V.C.	30	261.56	261.56	261.56
80	261.65	261.65	K = 217 EL. 262.12 100,000 V.C.	20	261.56	261.56	261.56
70	261.65	261.65	K = 217 EL. 262.12 100,000 V.C.	10	261.56	261.56	261.56
60	261.65	261.65	K = 217 EL. 262.12 100,000 V.C.	0	261.56	261.56	261.56
50	261.65	261.65	K = 217 EL. 262.12 100,000 V.C.				
40	261.65	261.65	K = 217 EL. 262.12 100,000 V.C.				
30	261.65	261.65	K = 217 EL. 262.12 100,000 V.C.				
20	261.65	261.65	K = 217 EL. 262.12 100,000 V.C.				
10	261.65	261.65	K = 217 EL. 262.12 100,000 V.C.				
0	261.65	261.65	K = 217 EL. 262.12 100,000 V.C.				