

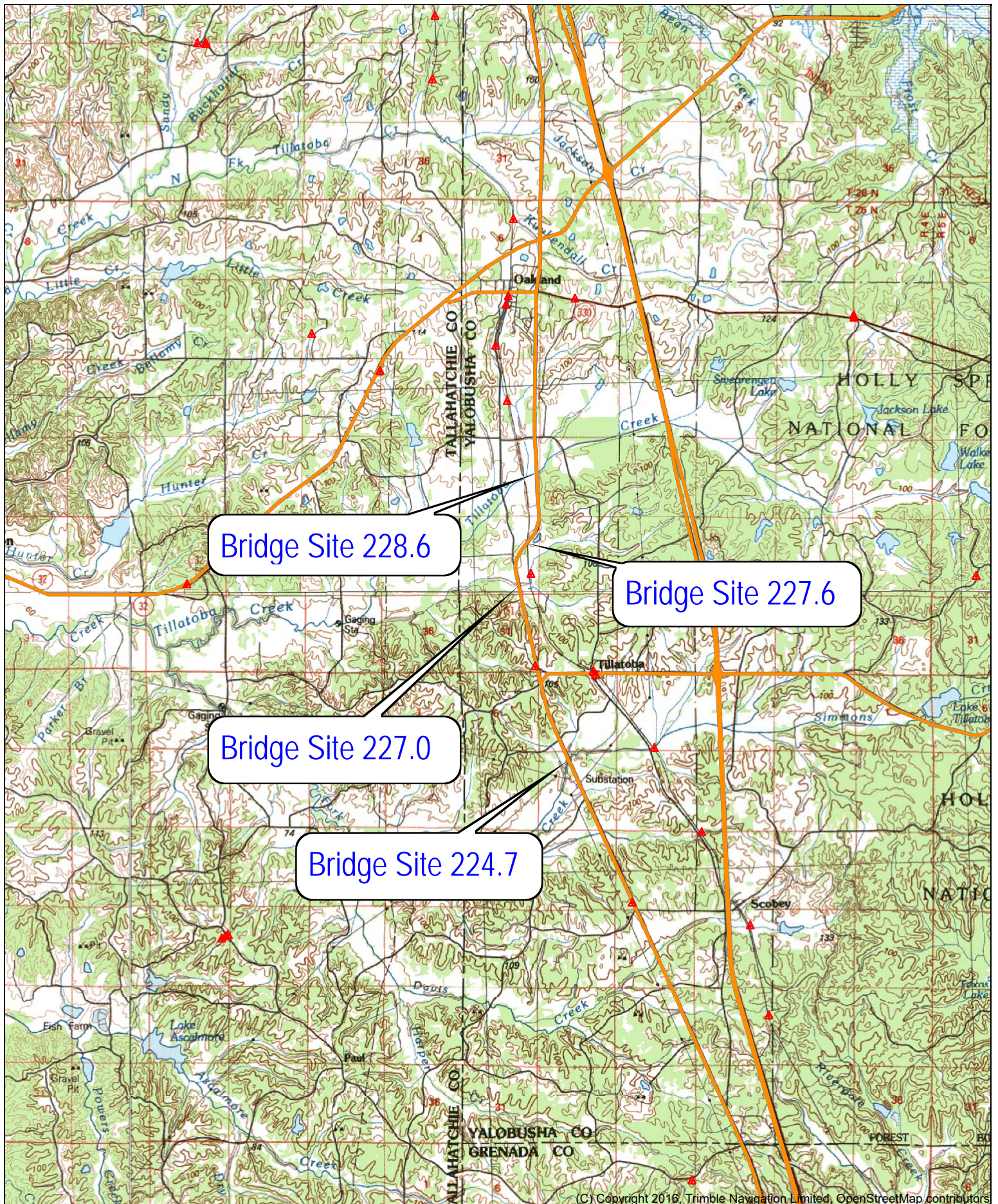
***Yalobusha 51***  
***STBG-2901-00(025); 103332-301000***

Corps of Engineers Nationwide 23

MDEQ Water Quality Certification

## Location Map





Name: Yalobusha  
Date: 07/25/22  
Scale: 1 inch = 8,333 ft.

Location: 033° 59' 50.9145" N, 089° 55' 04.2601" W  
FMS: 103332/301000  
Yalobusha US 51



## Table of Impacts

**Table 1. Wetland Data Point Summary Table**

Data Point	Wetland ID#	Latitude	Longitude	Station	Section-Township-Range	Area from ROW to ROW (Acres)	Cowardin Classification	Impact
DP-1	NW-1	34.025302	89.909033		19-25N-7W		Upland	No impacts
DP-2	NW-2	34.022848	89.908905		19-25N-7W		Upland	No impacts
DP-3	W-1	34.021522	89.908730	515+80	26-25N-7W		PFO	1.00 acres Permanent fill 1.21 acres Temporary fill
DP-4	NW-3	34.018820	89.908640		26-25N-7W		Upland	No impacts
DP-5	NW-4	34.010292	89.909770		30-25N-7W		Upland	No impacts
DP-6	NW-5	34.002045	89.913272		30-25N-7W		Upland	No impacts
DP-7	W-2	34.001094	89.912905	445+10	30-25N-7W		PFO	0.16 acres Permanent fill 0.23 acres Temporary fill
DP-8	NW-6	34.000265	89.912763	442+00	30-25N-7W		Upland	0.04 acres Temporary fill
DP-9	NW-7	34.970551	89.902380		5-24N-7W		Upland	No impacts
DP-10	W-3	34.971061	89.902983	331+25	5-24N-7W		PFO	0.02 acres Permanent fill 0.09 acres Temporary fill
DP-11	W-4	34.969541	89.903256	325+00	8-24N-7W		PEM	0.92 acres Permanent fill 0.80 acres Temporary fill
DP-12	NW-8	34.969699	89.901745		8-24N-7W		Upland	No impacts

DP - Data point- collection point for sampling data for wetland assessment

W – Wetland areas described as wetlands

PFO – Palustrine Forested

PEM – Palustrine Emergent

PSS – Palustrine Shrub-Scrub

Station Numbers are approximate

*\*Latitude and Longitude in Decimal Degrees, NAD 83, State Plane – The location of the Data Point*

*\*Wetland Impacts are based on preliminary slope stakes boundaries*

Wetland Summary:	Total Present (acres)	Permanent Fill (acres)	Temporary Fill (acres)
Forested	2.67	1.18	1.57
Shrub-Scrub	1.47	0	0
Emergent	0.71	0.92	0.80
Herb/Mowed	2.39	0	0
Crop/Farmed	4.30	0	0
<b>Total</b>	<b>11.54</b>	<b>2.10</b>	<b>2.37</b>

**Table 2. Channel Assessment Table**

CA #	Latitude	Longitude	Section-Township-Range	Station	Type	Length in Project Area (feet)	Channel Width (feet)	Name	Impact
1	34.0219	89.90934	19-25N-7W	525+95.00	P	370	50' TB	Tillatoba	14 linear feet of impacts due to shading from new bridge will occur; temporary impacts due to new bridge construction. 30 linear feet of impacts due to shading from temporary bridge will occur.
-1	34.0237	89.90847	19-25N-7W	477+22.60	I	300	8' TB	None	14 linear feet of impacts due to shading from new bridge will occur; temporary impacts due to new bridge construction.
4	34.0012	89.91414	30-25N-7W	446+75.50	P	365	80' TB	Tillatoba	12 linear feet of impacts due to shading from new bridge will occur; temporary impacts due to new bridge construction. 30 linear feet of impacts due to shading from temporary bridge will occur. 170 linear feet of impacts due to placing riprap in the channel.
5	33.9703	89.90273	8-24N-7W		I	150	20' TB	None	
6	33.9687	89.90245	8-24N-7W	322+95.00	P	590	80' TB	Simmons	12 linear feet of impacts due to shading from new bridge will occur; temporary impacts due to new bridge construction. 30 linear feet of impacts due to shading from temporary bridge will occur. 70 linear feet of impacts due to placing riprap in the channel.

CA- Channel Assessment- Channel Assessment point location

OW- Other Water

Type:

P-Perennial

I-Intermittent

E-Ephemeral

Station numbers (Sta.) are approximate

*\*Latitude and Longitude in Decimal Degrees, NAD 83, State Plane – The location of the CA Form Data Point*

*\*Impacts are based on preliminary slope stakes boundaries*

CA Summary:	Total Present (feet)	New Bridge Width Shade/ Clear (ft)	Temporary Bridge Width Shade/Clear (ft)	Culvert/ Pipe (ft)	Rip-Rap/ Armor (ft)	Relocate and Fill (ft)	New Channel with Rip-Rap (ft)
Perennial	2308	38	90	0	240	0	0
Intermittent	761	14	0	0	0	0	0
Ephemeral	0	0	0	0	0	0	0
Wet Ditch	1725	0	0	0	0	0	0
<b>Total</b>	<b>4794</b>	<b>52</b>	<b>90</b>	<b>0</b>	<b>240</b>	<b>0</b>	<b>0</b>

Note: Sheet ECD-17 will be included with the plans.

# Roadway and Bridge Plans

GENERAL INDEX

INCLUDED THIS PROJECT	BEGIN WITH SHEET
<input checked="" type="checkbox"/> ROADWAY .....	1
<input checked="" type="checkbox"/> PERMANENT SIGNS .....	1001
<input type="checkbox"/> TRAFFIC SIGNALS .....	2001
<input type="checkbox"/> ITS COMPONENTS .....	3001
<input type="checkbox"/> LIGHTING .....	4001
<input type="checkbox"/> (RESERVED) .....	5001
<input checked="" type="checkbox"/> ROADWAY STANDARD DWGS .....	6001
<input type="checkbox"/> BOX CULVERT STD. DRAWINGS (LRFD) .....	7001
<input type="checkbox"/> BOX CULVERT STD. DRAWINGS (STD. SPEC.)	7501
<input checked="" type="checkbox"/> BRIDGE .....	8001
<input checked="" type="checkbox"/> CROSS SECTIONS .....	9001

BRIDGE STRUCTURES REQ'D.

SITE 1

Ⓐ BRIDGE # 224.7  
STA. 322+95.000 TO 326+75.000  
BRIDGE LENGTH 380' SKEW 15° RT. FWD.  
SPANS REQUIRED 1@75', 1@150', 1@90', 1@65'

SITE 2

Ⓑ BRIDGE # 227.0  
STA. 446+75.500 TO 448+25.500  
BRIDGE LENGTH 150'  
SPANS REQUIRED 1@150'

SITE 3

Ⓒ BRIDGE # 227.6  
STA. 477+22.60 TO 480+22.60  
BRIDGE LENGTH 300' SKEW 45° LT. FWD.  
SPANS REQUIRED 1@85', 1@145', 1@70'

SITE 4

Ⓓ BRIDGE # 228.6  
STA. 525+95.000 TO 528+65.000  
BRIDGE LENGTH 270'  
SPANS REQUIRED 1@80', 1@110', 1@80'

CONVENTIONAL SYMBOLS

COUNTY LINE .....	
TOWN CORPORATION LINE .....	
SECTION LINE .....	
EXISTING ROAD OR TRAVELED WAY .....	
PROPOSED ROAD OR TRAVELED WAY .....	
RAILROAD .....	
SURVEY LINE .....	
BRIDGES .....	

STATE OF MISSISSIPPI

MISSISSIPPI DEPARTMENT OF TRANSPORTATION

PLAN AND PROFILE OF PROPOSED  
STATE HIGHWAY  
FEDERAL AID PROJECT NO. STBG-2901-00(025)

US HWY 51 BRIDGE REPLACEMENTS (BRIDGE NUMBERS 224.7, 227.0, 227.6, & 228.6)  
IN YALOBUSHA COUNTY

END PROJECT  
1543+66.441  
(HWY 51 STATIONING)

SITE 4

BRIDGE# 228.6

SITE 3

BRIDGE# 227.6

SITE 2

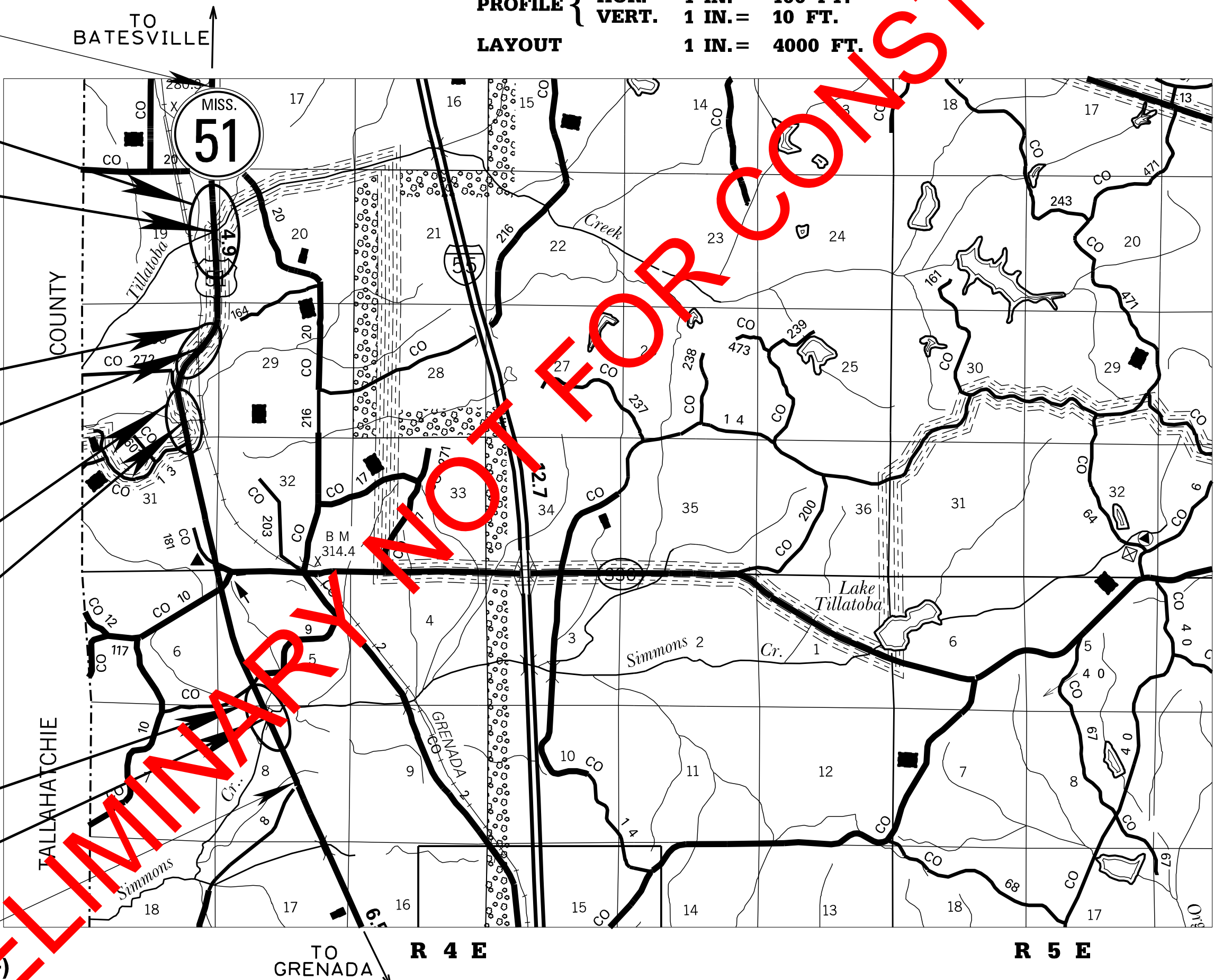
BRIDGE# 227.0

SITE 1

BRIDGE# 224.7

BEGIN PROJECT  
314+40.000  
(HWY 51 STATIONING)

SCALES	
PLAN	1 IN. = 100 FT.
PROFILE { HOR. VERT.	1 IN. = 100 FT.
LAYOUT	1 IN. = 10 FT.
	1 IN. = 4000 FT.

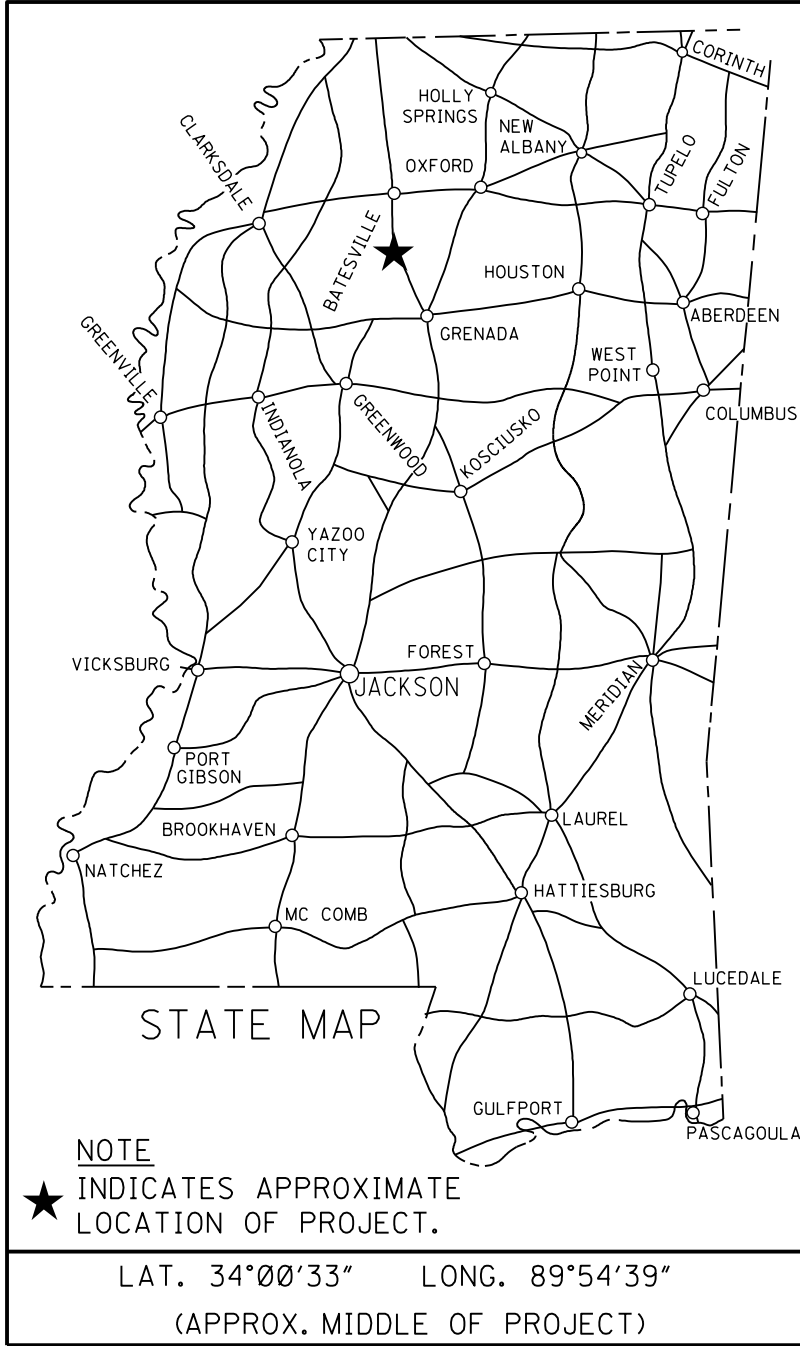


EQUATIONS

EXCEPTIONS

R.O.W. FMS 103332 /201000	
PLANS STAGE	DATE PRINTED
<input type="checkbox"/> CONCEPTUAL	6/12/18
<input type="checkbox"/> PRE-R.O.W.	2/19/19
<input type="checkbox"/> FIELD INSPECTION	5/10/19
<input type="checkbox"/> R.O.W. PLANS TO SMD	1/22/20
<input type="checkbox"/> FINAL R.O.W.	8/21/20
<input type="checkbox"/> R.O.W. REVISION	
<input checked="" type="checkbox"/> OFFICE REVIEW	10/08/21

STATE	PROJECT NUMBER	SHEET NO.
MISSISSIPPI	STBG-2901-00(025)	1



NOTE  
★ INDICATES APPROXIMATE  
LOCATION OF PROJECT.  
LAT. 34°00'33" LONG. 89°54'39"  
(APPROX. MIDDLE OF PROJECT)

DESIGN CONTROL	
55 MPH = V (SPEED DESIGN)	
ADT (2022) = 1600 ; ADT (2042) = 2000	
DHV = 237 ; D = 50 % T = 8 %	
PERMITS ACQUIRED BY MDOT	
WETLANDS AND WATERS PERMITS	
NATIONWIDE #14	<input type="checkbox"/>
NATIONWIDE (OTHER)*	<input type="checkbox"/>
GENERAL*	<input type="checkbox"/>
INDIVIDUAL (404)*	<input type="checkbox"/>
STORMWATER PERMIT	
Y REQUIRED (NOI SUBMITTED BY MDOT (DISTURBED AREA = 5 ACRES))	<input type="checkbox"/>
S REQUIRED (NOI TO BE SUBMITTED BY CONTRACTOR (1 TO 4.99 ACRES))	<input type="checkbox"/>
N NO STORMWATER PERMIT REQUIRED (<1 ACRE)	<input type="checkbox"/>
APPROVED BY:	

P S & E DATE:

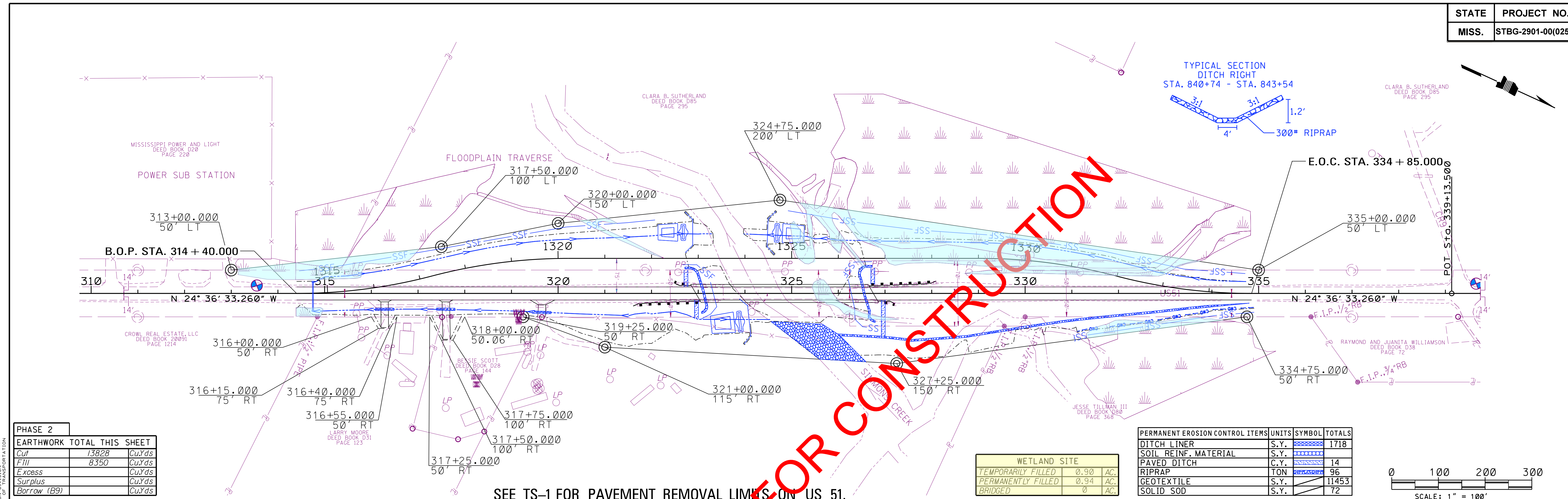
APPROVED:	
DEPUTY EXECUTIVE DIRECTOR / CHIEF ENGINEER	
EXECUTIVE DIRECTOR	



PRELIMINARY  
NOT FOR  
CONSTRUCTION



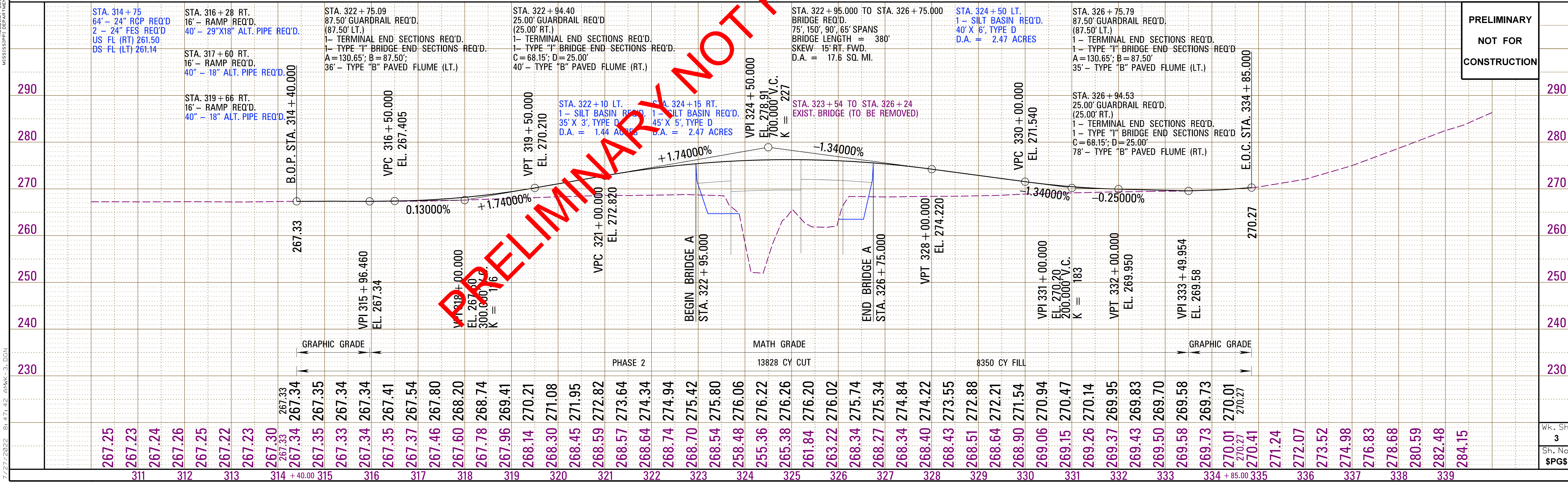
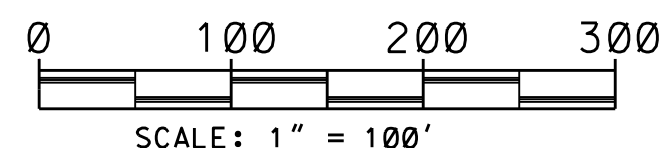
STATE	PROJECT NO.
MISS.	STBG-2901-00(025)



PHASE 2		
EARTHWORK TOTAL THIS SHEET		
Cut	13828	Cu.Yds
Fill	8350	Cu.Yds
Excess		Cu.Yds
Surplus		Cu.Yds
Borrow (B9)		Cu.Yds







WETLAND SITE		
TEMPORARILY FILLED	0.90	AC.
PERMANENTLY FILLED	0.94	AC.
BRIDGED	0	AC.

PERMANENT EROSION CONTROL ITEMS	UNITS	SYMBOL	TOTALS
DITCH LINER	S.Y.		1718
SOIL REINF. MATERIAL	S.Y.		
PAVED DITCH	C.Y.		14
RIPRAP	TON		96
GEOTEXTILE	S.Y.		11453
SOLID SOD	S.Y.		72

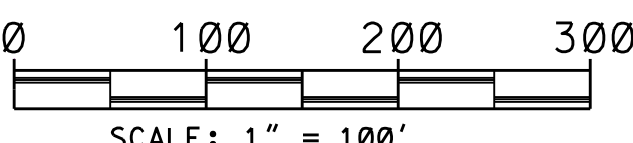




WETLAND SITE		
TEMPORARILY FILLED	0.27	AC.
PERMANENTLY FILLED	0.16	AC.
BRIDGED	0	AC.

PERMANENT EROSION CONTROL ITEMS	UNITS	SYMBOL	TOTALS
DITCH LINER	S.Y.		2194
SOIL REINF. MATERIAL	S.Y.		
PAVED DITCH	C.Y.		11
RIPRAP	TON		55
GEOTEXTILE	S.Y.		14625
SOLID SOD	S.Y.		64

SEE TS-1 FOR PAVEMENT REMOVAL LIMITS ON US 51.





STATE	PROJECT NO.
MISS.	STBG-2901-00(025)

Curve H051-S3.1  
Δ = 53° 32' 14.025" (RT)  
D = 2° 59' 42.720"  
L = 1,787.434'  
T = 964.971'  
R = 1,912.920'  
BK N 12° 53' 14.607" W  
AH N 40° 38' 59.419" E  
PC 455+09.500  
PT 472+96.934

SUPER EL. 0.066 FT/FT WIDTH  
EXTRA WIDTH ON INSIDE 0 FT  
SEE DWG. N/A CASE

SEE SUPERELEVATION  
DIAGRAM IN PLAN VIEW

B.M. ELEV. 314.81  
DESC. PCM 19  
STA. 475+71 18.0' LT

FLOODPLAIN TRAVERSE

PERMANENT EASEMENT

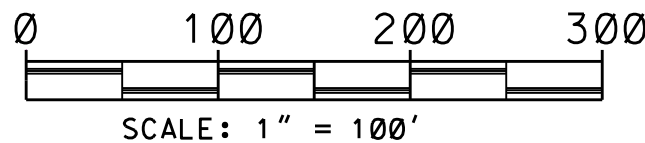
Curve H051-S3.4  
Δ = 44° 25' 07.262" (LT)  
D = 2° 14' 47.400"  
L = 1,977.239'  
T = 1,041.303'  
R = 2,550.446'  
BK N 40° 41' 37.417" E  
AH N 3° 43' 29.845" W  
PC 481+14.930  
PT 500+92.170

SUPER EL. 0.052 FT/FT WIDTH  
EXTRA WIDTH ON INSIDE 0 FT  
SEE DWG. N/A CASE

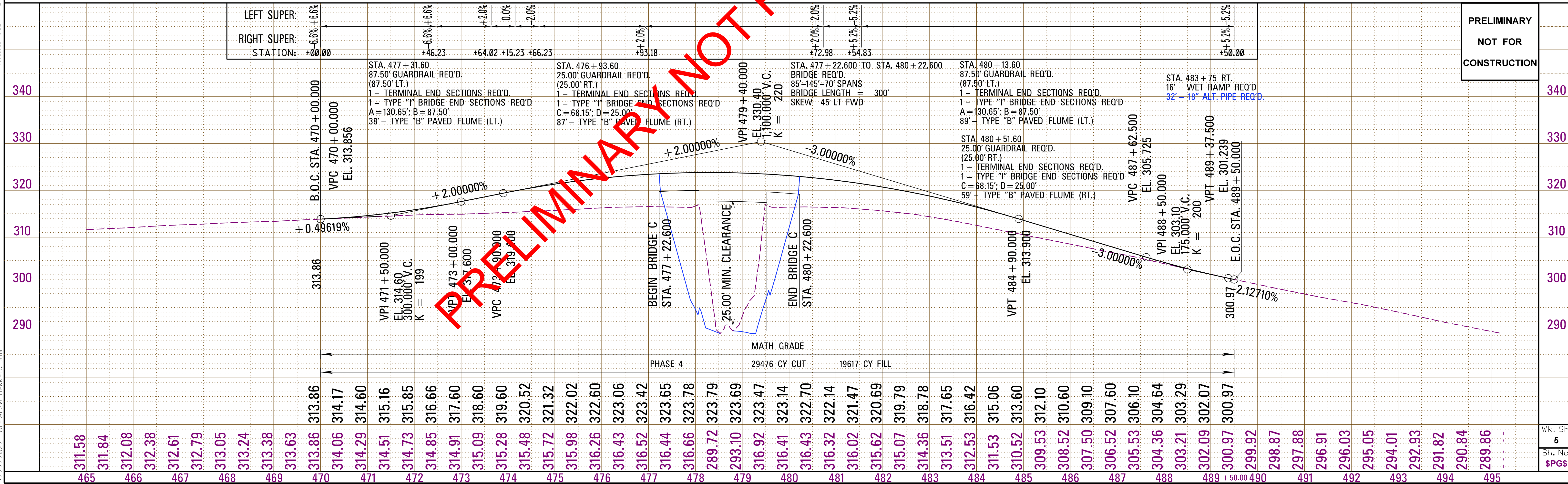
SEE SUPERELEVATION  
DIAGRAM IN PLAN VIEW

PHASE 4	EARTHWORK TOTAL THIS SHEET
Cut	29476 Cu.Yds
Fill	19617 Cu.Yds
Excess	Cu.Yds
Surplus	Cu.Yds
Borrow (B9)	Cu.Yds

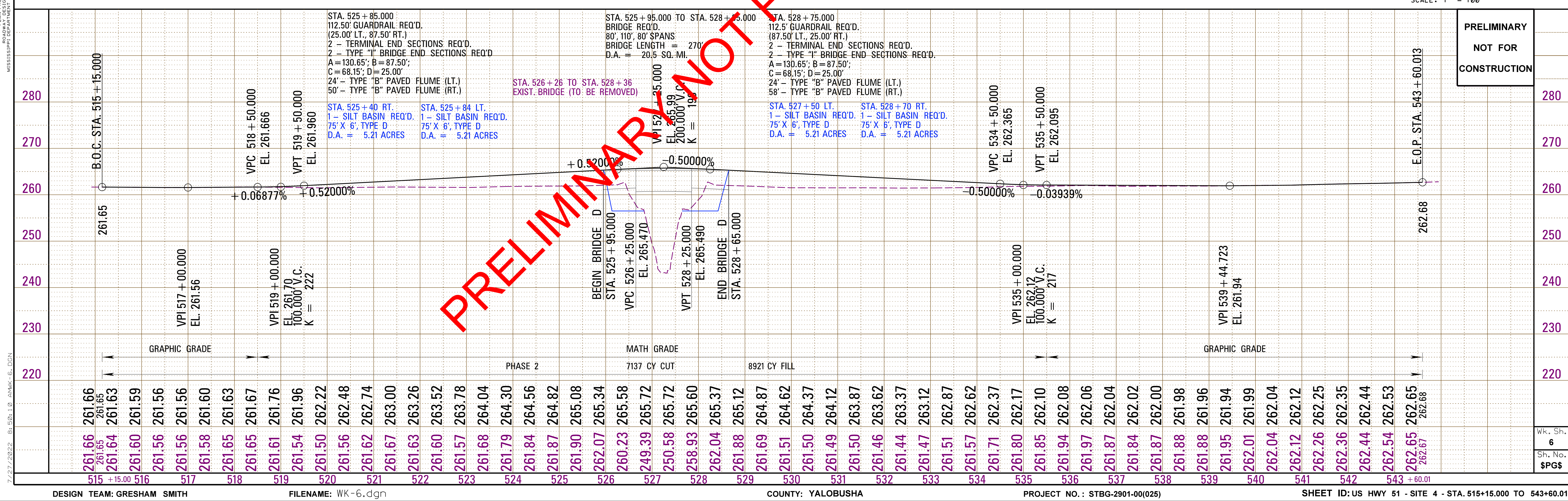
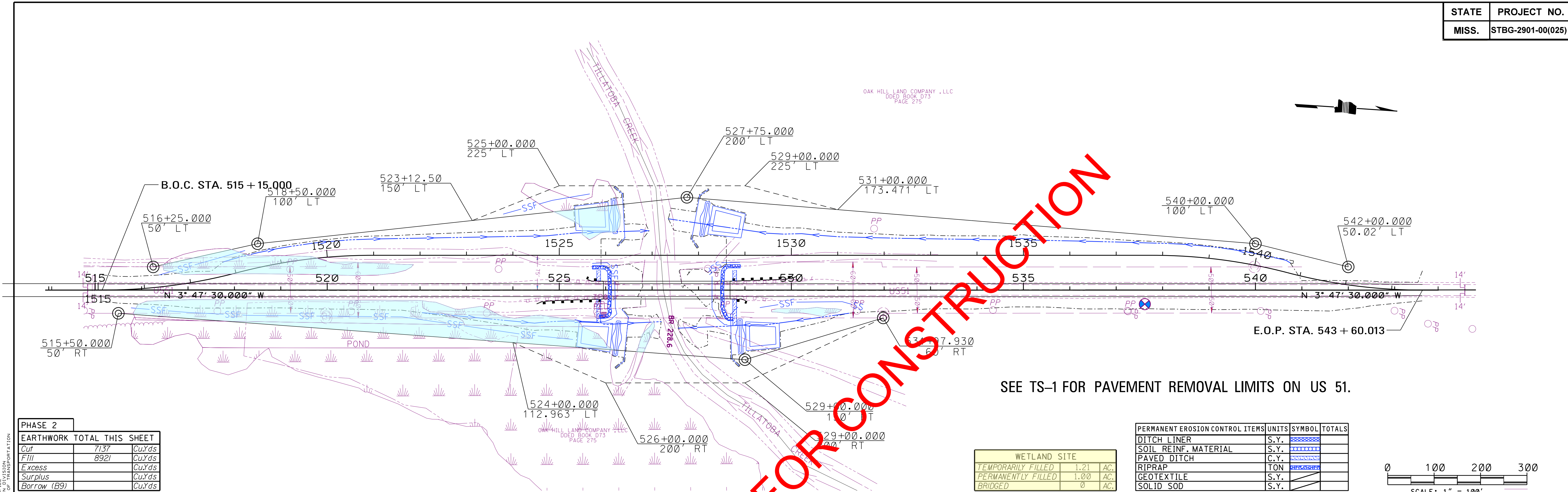
PERMANENT EROSION CONTROL ITEMS	UNITS	SYMBOL	TOTALS
DITCH LINER	S.Y.		
SOIL REINF. MATERIAL	S.Y.		
PAVED DITCH	C.Y.		
RIPRAP	TON		
GEOTEXTILE	S.Y.		
SOLID SOD	S.Y.		



SEE TS-1 FOR PAVEMENT REMOVAL LIMITS ON US 51.

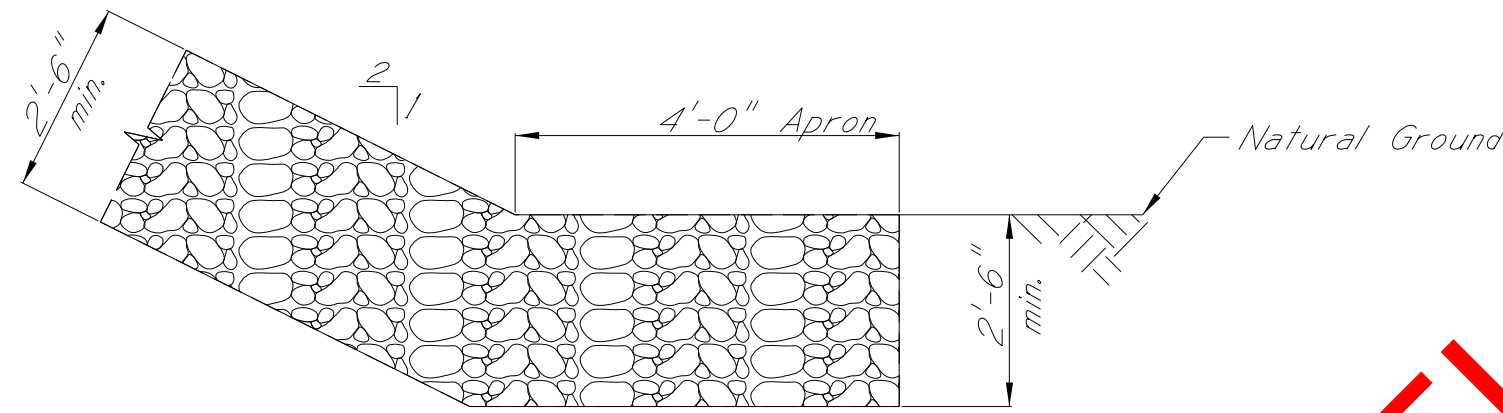
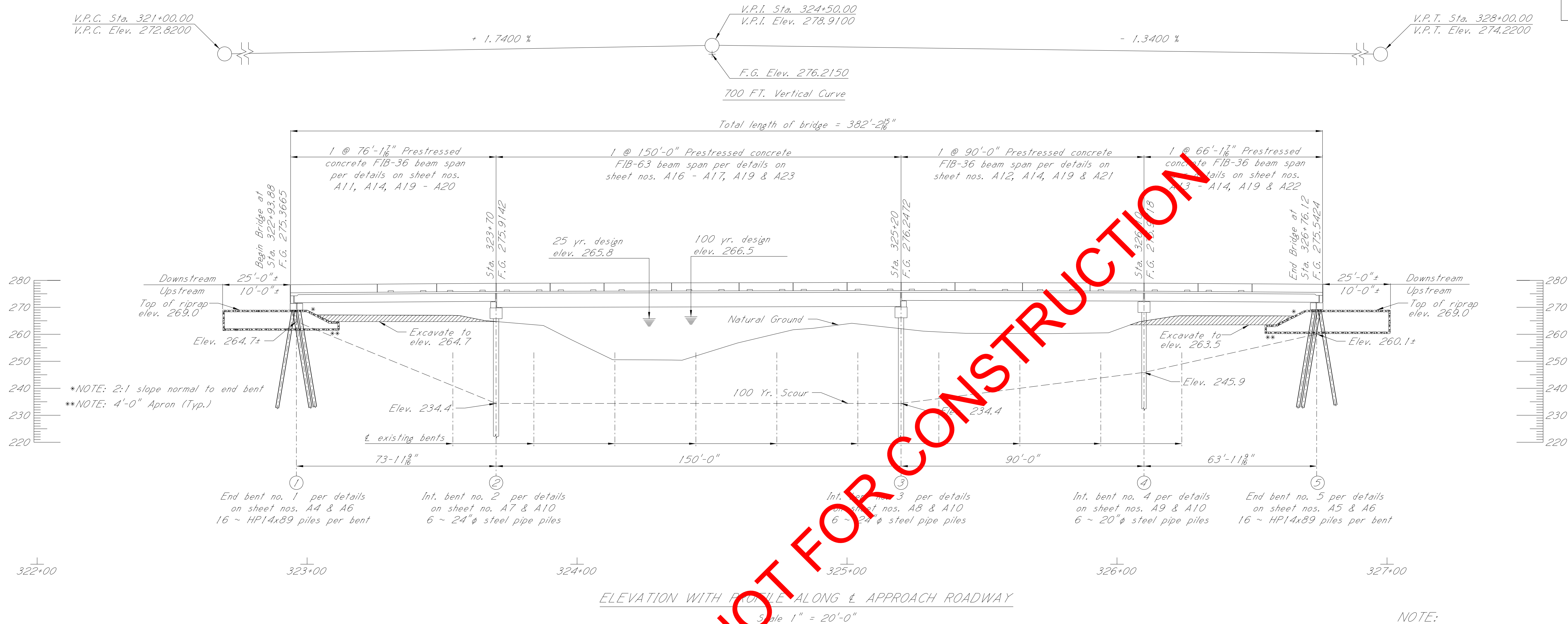








STATE	PROJECT NO.
MISS.	STBG-2901-00(025)



RIPRAP TOE DETAILS

REQUIRED ULTIMATE PILE BEARING CAPACITY AND TIP ELEVATION SCHEDULE						
Bent No.	Pile Type & Size	Required Ult. Bearing (Tons)	Min Tip Elevation	Est. Length (Ft.)	Controlling Limit State	PDA Factor
1	HP14x89	111	244.7	55	Strength I	0.65
2	Steel Pipe Pile, 24"φ	385	213.3	95	Strength I	0.65
3	Steel Pipe Pile, 24"φ	398	213.3	95	Strength I	0.65
4	Steel Pipe Pile, 20"φ	274	224.6	85	Strength I	0.65
5	HP14x89	104	238.2	55	Strength I	0.65

500 Year Scour Elevations	
Bent no.	Elevation
1	264.7
2	233.3
3	233.3
4	244.6
5	258.2

PDA TEST PILE SCHEDULE		
Bent No.	Min. Length.-Ft.	Tip Elevation
1	65	204.5
3	115	153.1
5	65	204.7

NOTE:

Geotextile fabric is required under all riprap. All riprap and geotextile fabric shown on the bridge plans are included in the bridge quantities

DRAINAGE DATA:

Drainage area . . . . . 17.6 sq. mi.  
025 (U.S.G.S.) . . . . . 4,460 cfs  
0100 (U.S.G.S.) . . . . . 5,710 cfs  
Effective area . . . . . 1,067 sq. ft.

DESIGN DATA:

Specifications . . A.A.S.H.T.O., LRFD 9th edition, 2020  
Loading . . . . . HL-93  
Roadway width . . . . . 36'-0" gutter to gutter  
Concrete . . . . . Class "AA" (4,000 psi)  
Class "BDX" (4,500 psi)  
Stay-in-place metal forms . . . 18 lbs./ft<sup>2</sup> (between flanges)  
Seismic performance zone . . . 1  
Seismic soil site class . . . . C  
Seismic operational class . . . Other

SPECIAL PROVISIONS:

Test Piles. . . . . 907-803  
Concrete Bridges and Structures . . . 907-804

NOTE:

PDA monitored Steel H-Piles shall be at least 10 feet longer than planned production pile lengths

NOTE:

PDA monitored Steel Pipe Piles shall be at least 20 feet longer than planned production pile lengths

NOTE:

For information plans, see working no. INFO-A1  
Additional information on the existing bridge is available upon request from MDOT Bridge Division

NOTE:

Existing embankment shall be removed to natural ground elevation 264.7' from Sta. 322+93.88 to Sta. 323+88 and natural ground elevation 263.5' from Sta. 324+80 to Sta. 326+76.12 once traffic is no longer being served.



MISSISSIPPI DEPARTMENT OF TRANSPORTATION  
BRIDGE AT STA. 322+93.88  
US 51 OVER  
SIMMONS CREEK  
LAYOUT

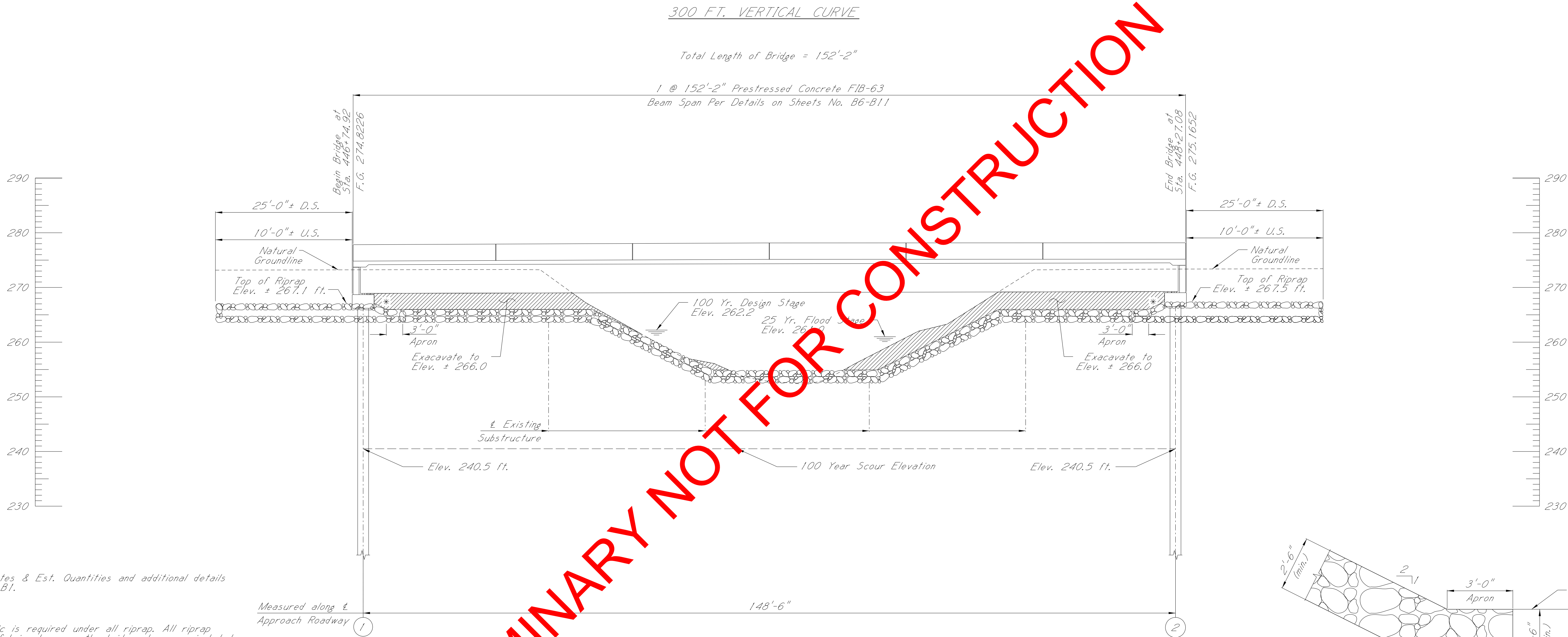
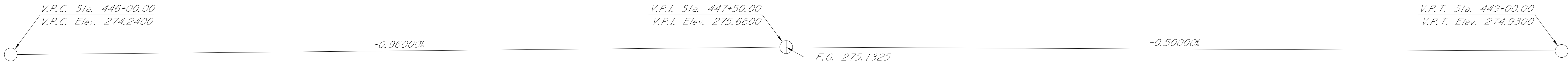
FMS: 103332 / 301000  
COUNTY: YALOBUSHA  
PROJECT NUMBER: STBG-2901-00(025)

DESIGNER Jim Fairly  
DETAILER Jim Fairly  
CHECKER David Henry  
ISSUE DATE 2022-11-22  
DIRECTOR OF STRUCTURES, STATE BRIDGE ENGINEER - SCOTT WESTERFIELD, P.E.  
DEP. DIR. OF STRUCTURES, ASST. STATE BRIDGE ENGINEER - MICAH DEW, P.E.

WORKING NUMBER  
A2 OF A26  
SHEET NUMBER  
8005







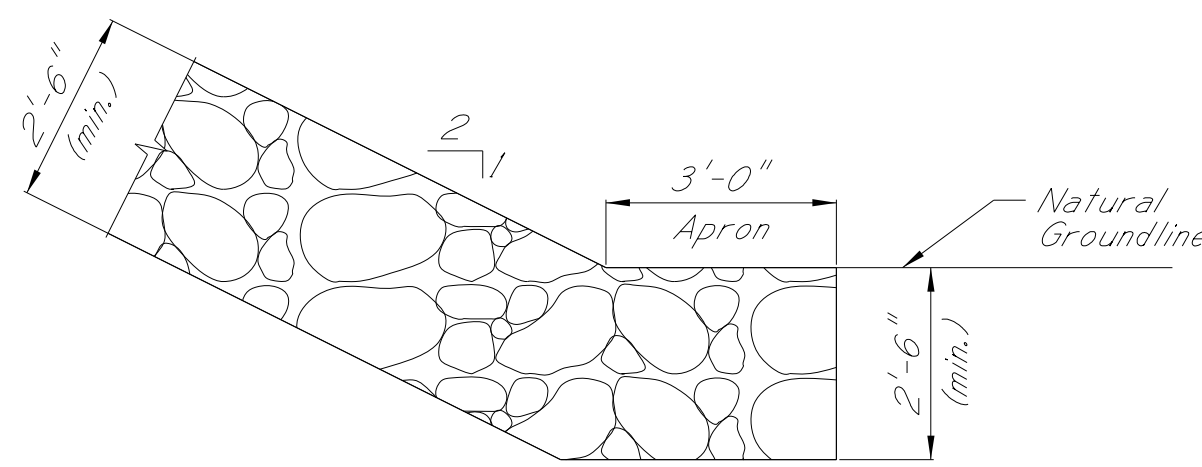
NOTE:  
For General Notes & Est. Quantities and additional details see Sheet No. B1.

NOTE:  
Geotextile fabric is required under all riprap. All riprap and geotextile fabric shown on the bridge plans are included in the bridge quantities.

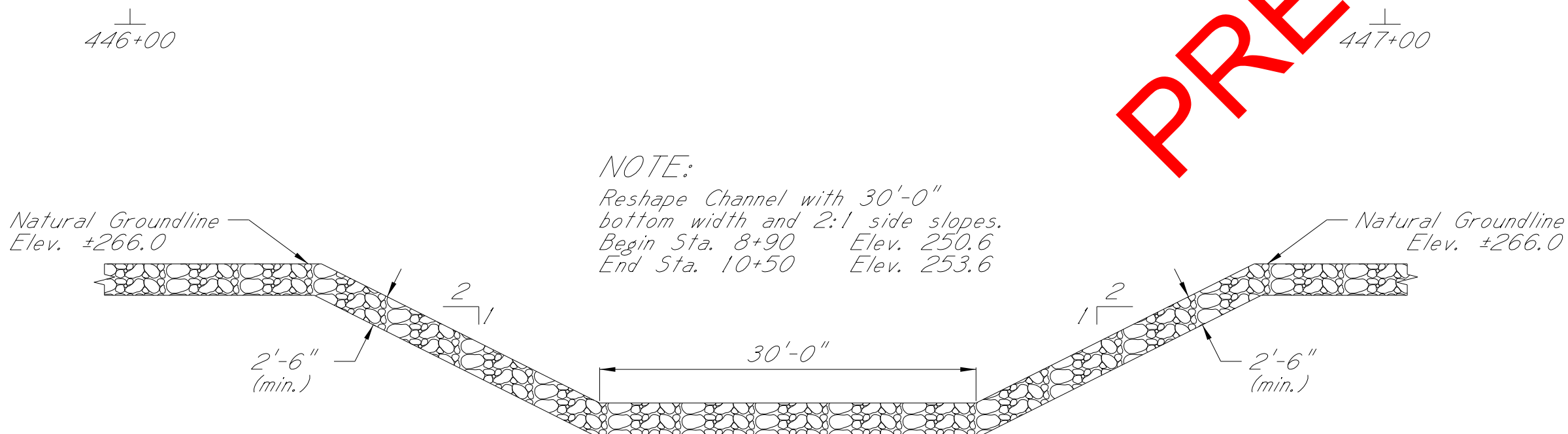
\*NOTE:  
2:1 Slope Normal to End Bent.

Steel Pipe Pile End Bents No. 1 & No. 2  
Per Details, on Sheets No. B4-B5.  
11 ~ 24" Piles Per End Bent.

ELEVATION WITH PROFILE ALONG & APPROACH ROADWAY  
Scale: 1" = 10'-0"



RIPRAP APRON DETAILS



CHANNEL REVETMENT DETAILS

500 Year Scour Elevations	
Bent no.	Elevation
1	240.2
2	240.2

SPECIAL PROVISIONS:  
Test Piles . . . . . 903-803  
Concrete Bridges and Structures . . . . . 903-804

DESIGN DATA:  
Specifications . . . . . A.A.S.H.T.O., LRFD 9th Edition, 2020  
Loading . . . . . HL-93  
Roadway width . . . . . 36'-0" Gutter to Gutter  
Concrete . . . . . Class "AA" (4,000 p.s.i.)  
Class "BDA" (4,500 p.s.i.)  
Stay-in-Place metal forms . . . 18lbs./ft<sup>2</sup> (between flanges)  
Seismic Performance Zone . . . 2  
Seismic Soil Site Class . . . C  
Seismic Operational Class . . . Other

DRAINAGE DATA:  
Drainage area . . . . . 3.82 sq. mi.  
Total Q100 (U.S.G.S.) . . . . . 3,350 c.f.s.  
Total Q25 (U.S.G.S.) . . . . . 2,660 c.f.s.  
Effective area . . . . . 251.7 sq. ft.



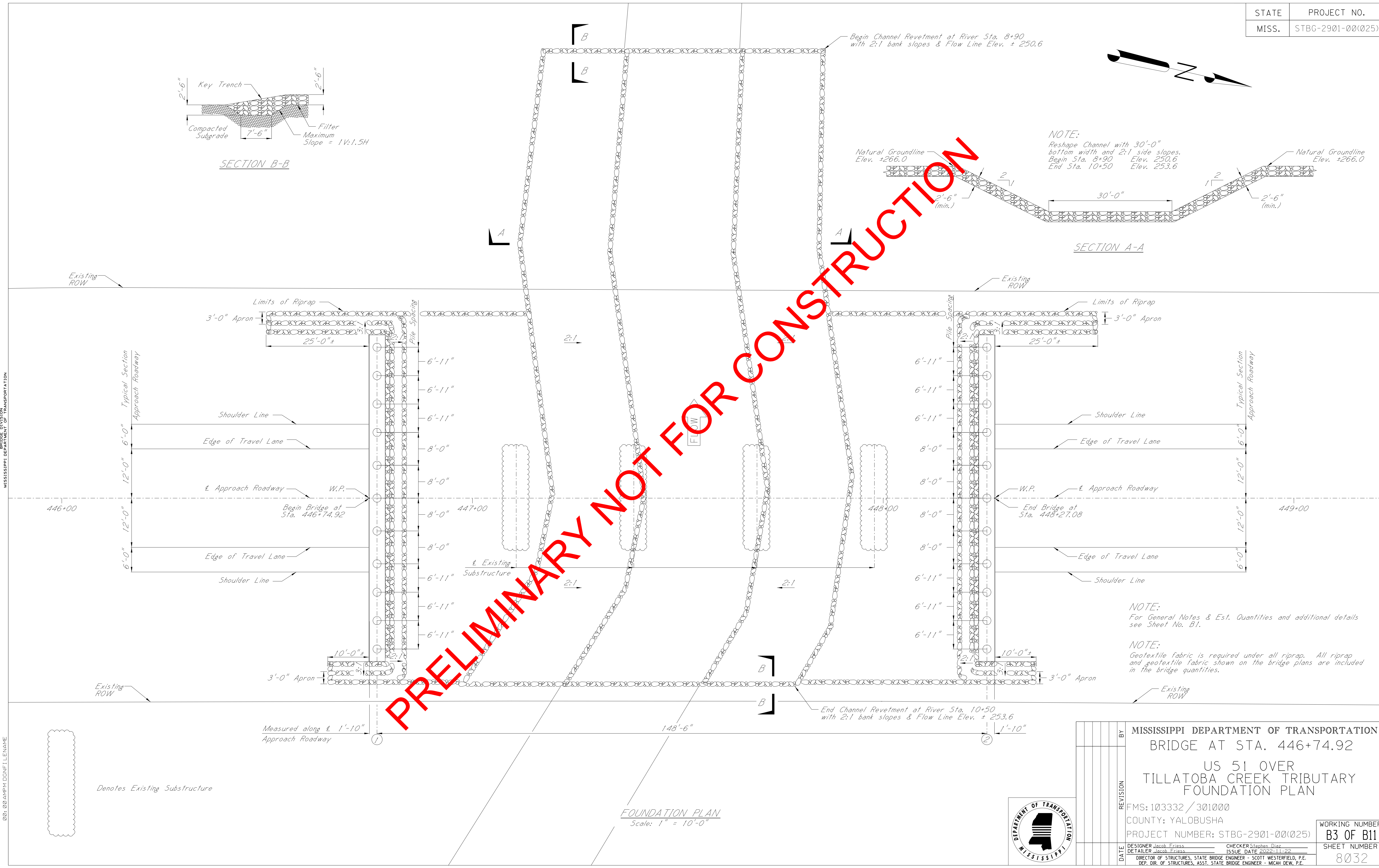
MISSISSIPPI DEPARTMENT OF TRANSPORTATION  
BRIDGE AT STA. 446+74.92  
US 51 OVER  
TILLATOBA CREEK TRIBUTARY  
LAYOUT

FMS: 103332 / 301000  
COUNTY: YALOBUSHA  
PROJECT NUMBER: STBG-2901-00(025)

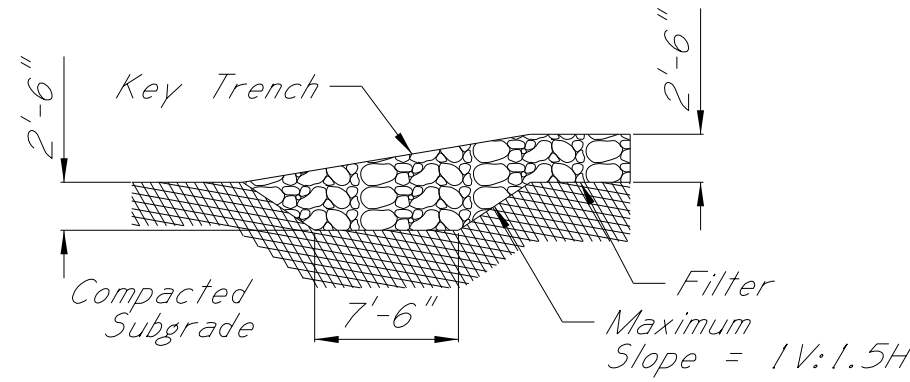
DESIGNER Jacob Friess  
DETAILER Jacob Friess  
CHECKER Stephen Diaz  
ISSUE DATE 2022-11-22  
DIRECTOR OF STRUCTURES, STATE BRIDGE ENGINEER - SCOTT WESTERFIELD, P.E.  
DEP. DIR. OF STRUCTURES, ASST. STATE BRIDGE ENGINEER - MICAH DEW, P.E.

WORKING NUMBER  
B2 OF B11  
SHEET NUMBER  
8031

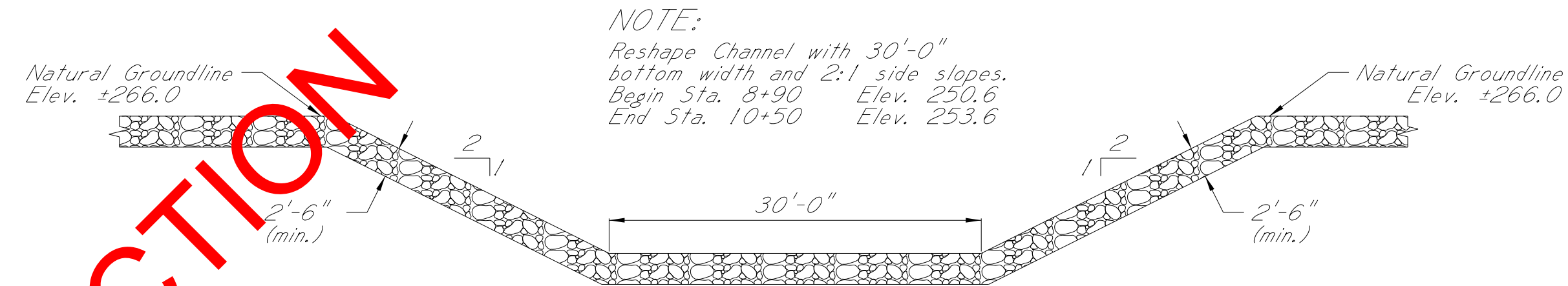




STATE	PROJECT NO.
MISS.	STBG-2901-00(025)



SECTION B-B



NOTE:  
Reshape Channel with 30'-0" bottom width and 2:1 side slopes. Begin Sta. 8+90 Elev. 250.6 End Sta. 10+50 Elev. 253.6

SECTION A-A

FOUNDATION PLAN  
Scale: 1" = 10'-0"

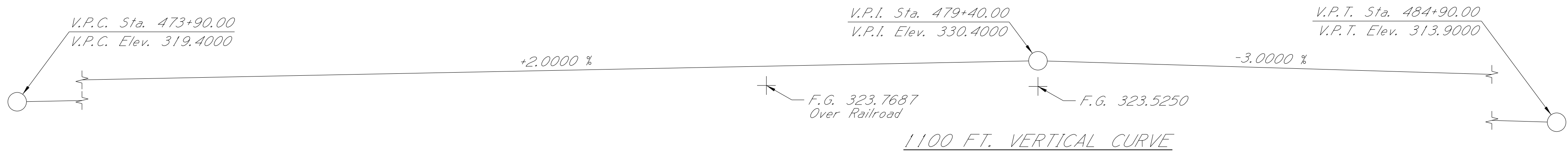


NOTE:  
For General Notes & Est. Quantities and additional details see Sheet No. B1.

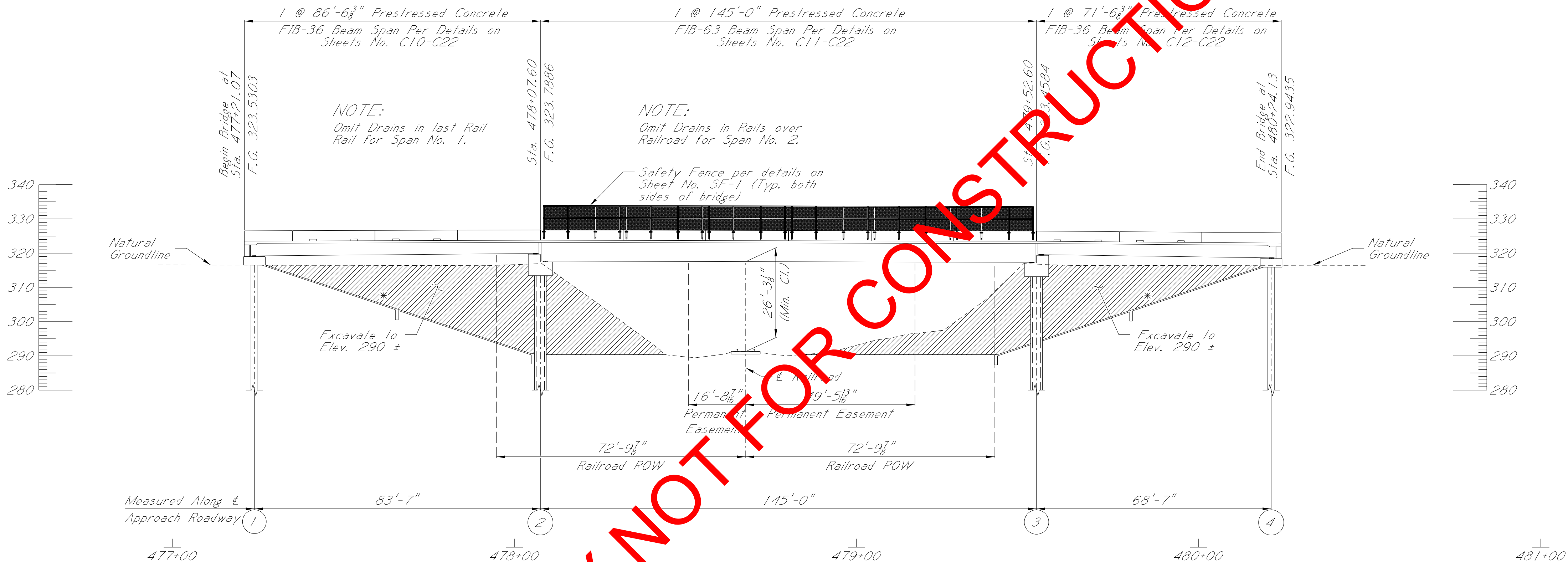
NOTE:  
Geotextile fabric is required under all riprap. All riprap and geotextile fabric shown on the bridge plans are included in the bridge quantities.

BY		MISSISSIPPI DEPARTMENT OF TRANSPORTATION	
		BRIDGE AT STA. 446+74.92	
		US 51 OVER	
		TILLATOBA CREEK TRIBUTARY	
		FOUNDATION PLAN	
REVISION		FMS: 103332 / 301000	
		COUNTY: YALOBUSHA	
		PROJECT NUMBER: STBG-2901-00(025)	
DATE		DESIGNER Jacob Friess	CHECKER Stephen Diaz
		DETAILER Jacob Friess	ISSUE DATE 2022-11-22
		DIRECTOR OF STRUCTURES, STATE BRIDGE ENGINEER - SCOTT WESTERFIELD, P.E.	
		DEP. DIR. OF STRUCTURES, ASST. STATE BRIDGE ENGINEER - MICAH DEW, P.E.	
		WORKING NUMBER	
		B3 OF B11	
		SHEET NUMBER	
		8032	





Total Length of Bridge = 303'-0 3/4"



Steel Pipe Pile End Bents No. 1 & 4  
Per Details on Sheets No. C4-C6.  
9 ~ 24"  $\phi$  Piles Per End Bent.

Steel Pipe Pile Int. Bents No. 2 & 3  
Per Details on Sheets No. C7-C9.  
5 ~ 30"  $\phi$  Piles Per End Bent.

DESIGN DATA:

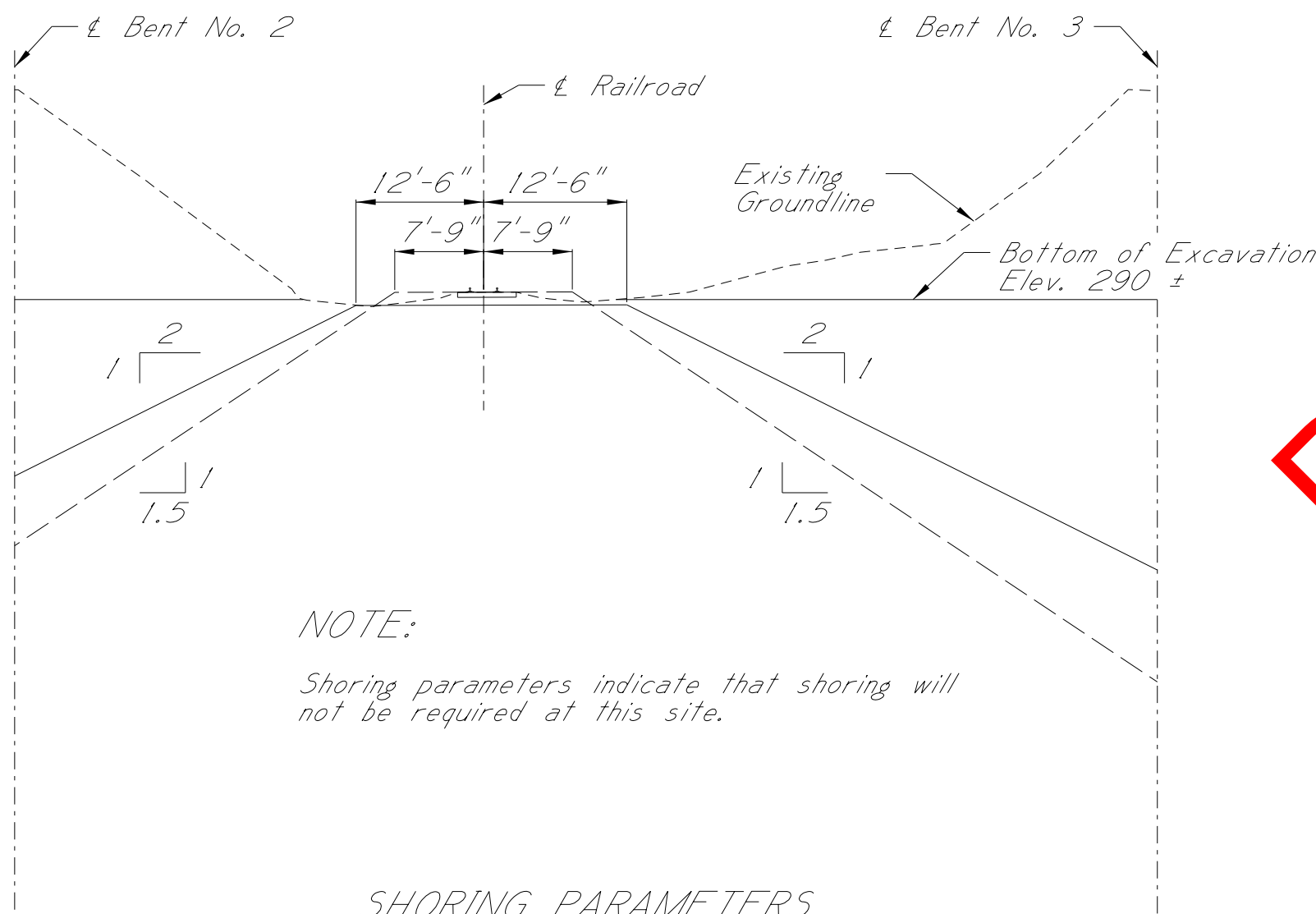
Specifications. . . . . A.A.S.H.T.O., LRFD 9th Edition, 2020  
Loading. . . . . HL-93  
Roadway width. . . . . 36'-0" Gutter to Gutter  
Concrete. . . . . Class "AA" (4,000 p.s.i.)  
Class "BDX" (4,500 p.s.i.)  
Stay-in-Place metal forms. . . 18lbs./ft<sup>2</sup> (between flanges)  
Seismic Performance Zone. . . 2  
Seismic Soil Site Class. . . . C  
Seismic Operational Class. . . Other

NOTE:

For General Notes & Est. Quantities and additional details  
see Sheet No. C1.

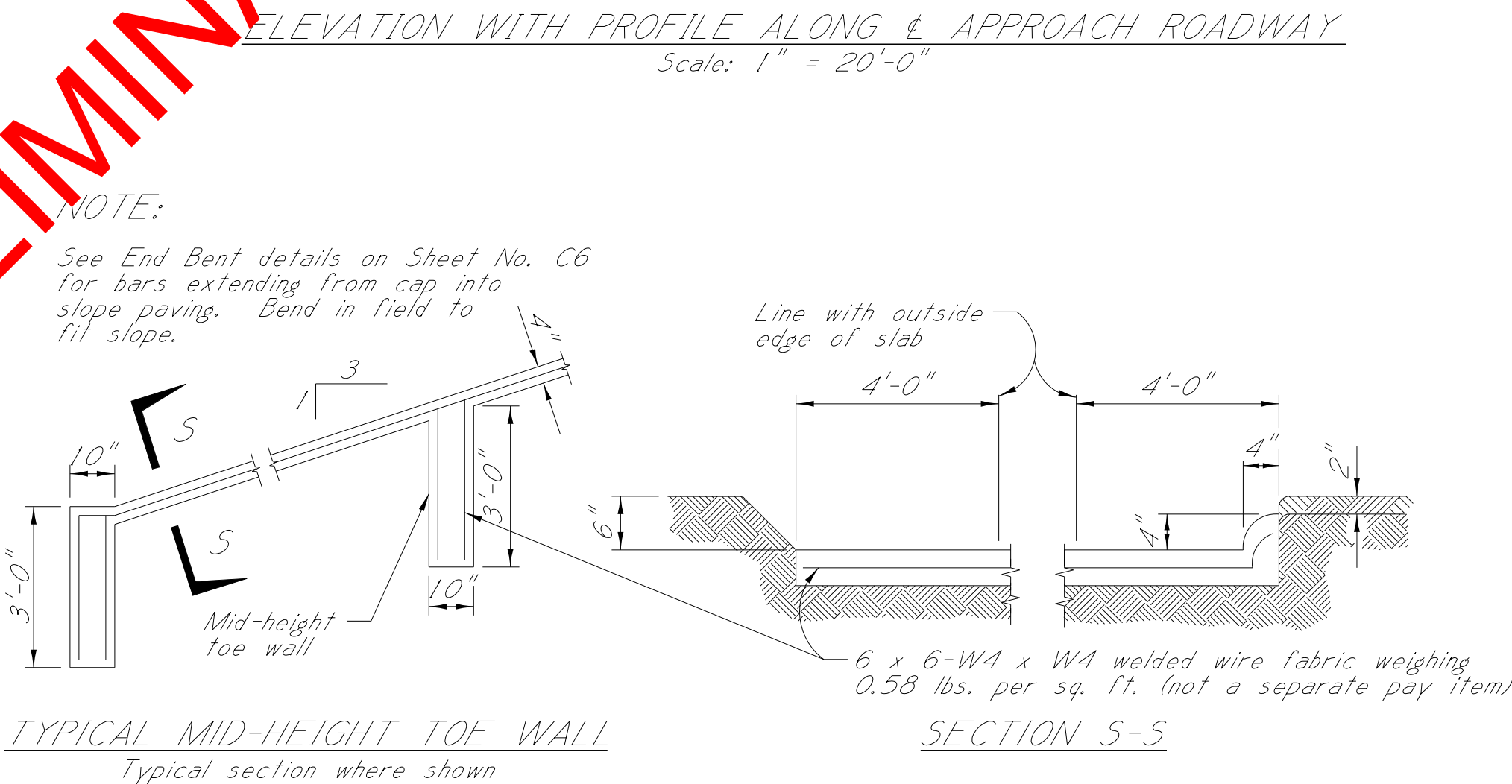
\*NOTE:

3:1 Slope Normal to End Bent.



NOTE:  
Shoring parameters indicate that shoring will  
not be required at this site.

SHORING PARAMETERS



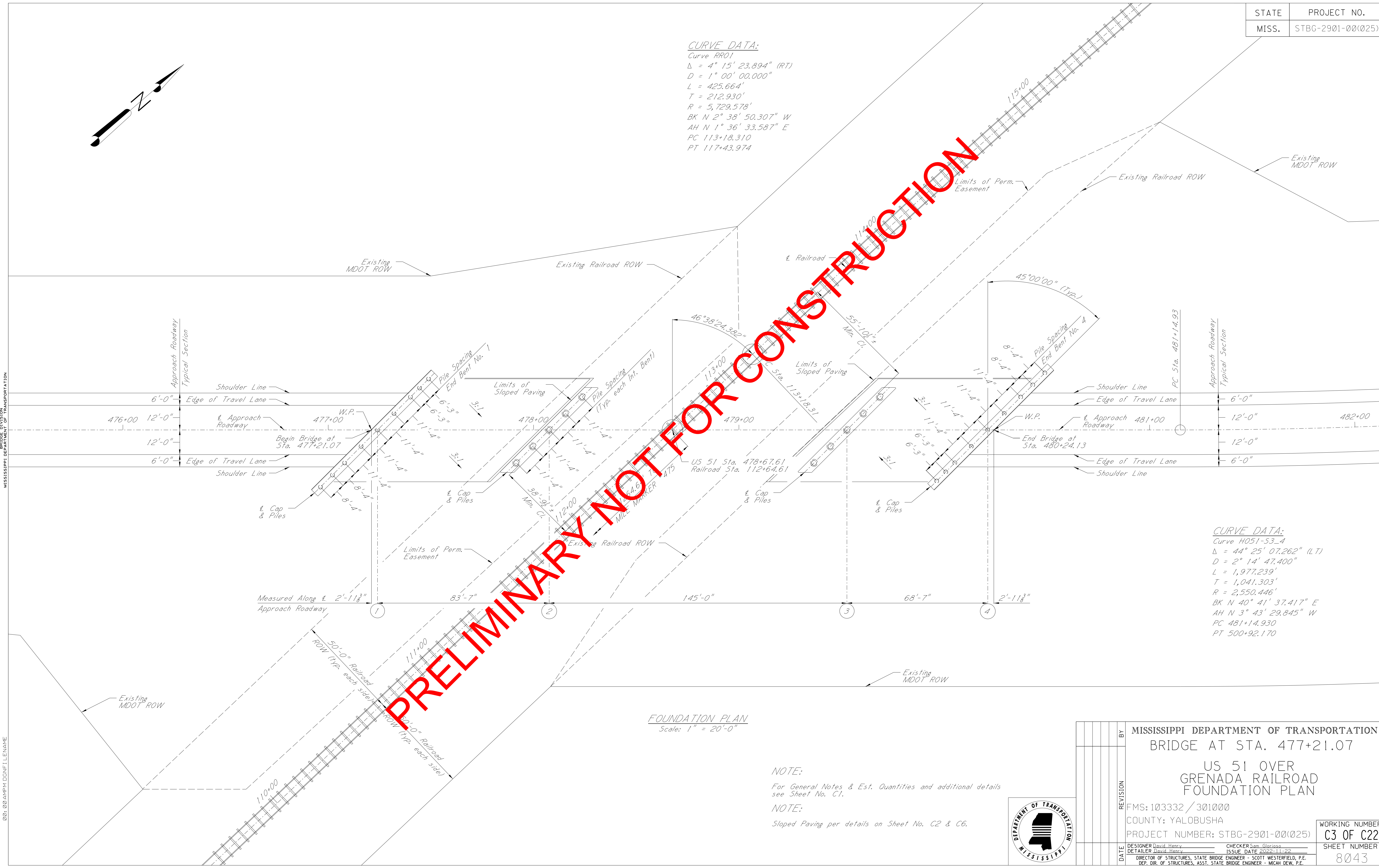
TYPICAL MID-HEIGHT TOE WALL  
Typical section where shown

SLOPE PAVING DETAILS



BY		MISSISSIPPI DEPARTMENT OF TRANSPORTATION	
		BRIDGE AT STA. 477+21.07	
		US 51 OVER GRENEADA RAILROAD LAYOUT	
		FMS: 103332 / 301000	
		COUNTY: YALOBUSHA	
		PROJECT NUMBER: STBG-2901-00(025)	
		DESIGNER David Henry	
		CHECKER Sam Glorioso	
		DATE 2022-11-22	
		DIRECTOR OF STRUCTURES, STATE BRIDGE ENGINEER - SCOTT WESTERFIELD, P.E.	
		DEP. DIR. OF STRUCTURES, ASS. STATE BRIDGE ENGINEER - MICAH DEW, P.E.	
		WORKING NUMBER C2 OF C22	
		SHEET NUMBER 8042	





CURVE DATA:  
Curve RR01  
 $\Delta = 4^\circ 15' 23.894''$  (RT)  
 $D = 1^\circ 00' 00.000''$   
 $L = 425.664'$   
 $T = 212.930'$   
 $R = 5,729.578'$   
BK N  $2^\circ 38' 50.307''$  W  
AH N  $1^\circ 36' 33.587''$  E  
PC 113+18.310  
PT 117+43.974

CURVE DATA:  
Curve H051-53\_4  
 $\Delta = 44^\circ 25' 07.262''$  (LT)  
 $D = 2^\circ 14' 47.400''$   
 $L = 1,977.239'$   
 $T = 1,041.303'$   
 $R = 2,550.446'$   
BK N  $40^\circ 41' 37.417''$  E  
AH N  $3^\circ 43' 29.845''$  W  
PC 481+14.930  
PT 500+92.170

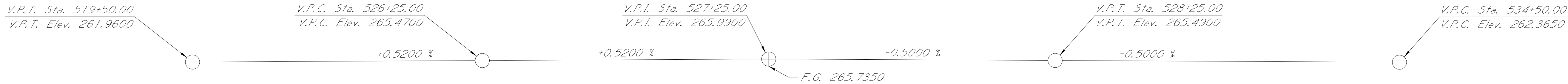
FOUNDATION PLAN  
Scale: 1" = 20'-0"

NOTE:  
For General Notes & Est. Quantities and additional details see Sheet No. C1.

NOTE:  
Sloped Paving per details on Sheet No. C2 & C6.

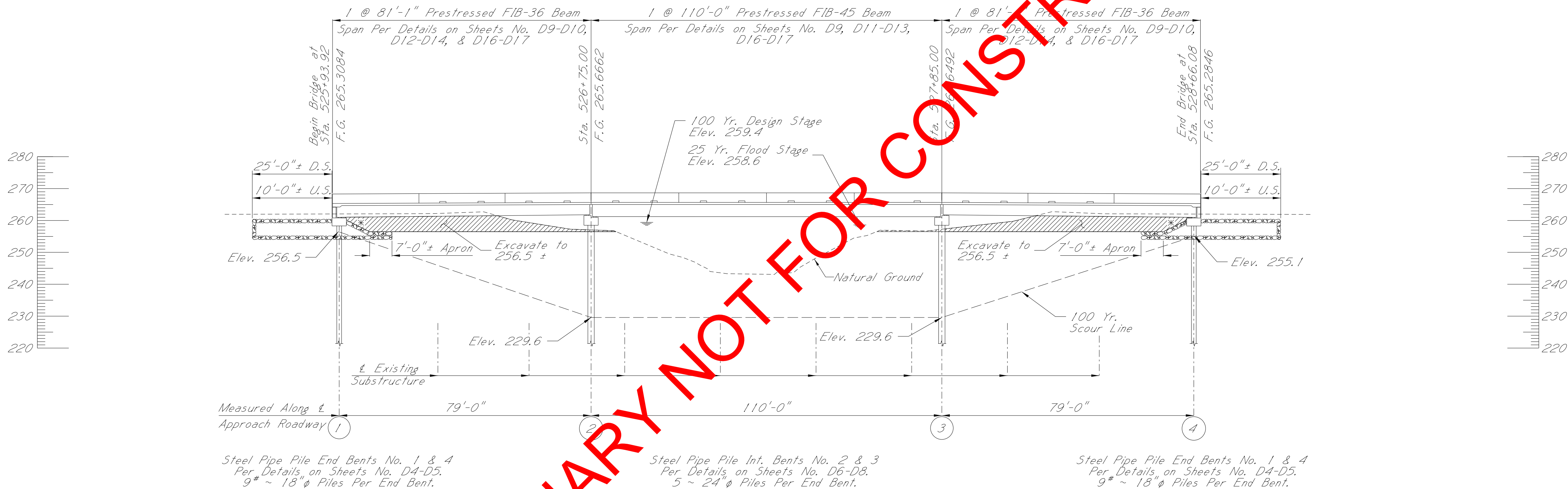


		MISSISSIPPI DEPARTMENT OF TRANSPORTATION	
		BRIDGE AT STA. 477+21.07	
		US 51 OVER	
		GRENADA RAILROAD	
		FOUNDATION PLAN	
		FMS: 103332 / 301000	
		COUNTY: YALOBUSHA	
		PROJECT NUMBER: STBG-2901-00(025)	
DATE	DESIGNER David Henry	CHECKER Sam Glorioso	WORKING NUMBER C3 OF C22
	DETAILER David Henry	ISSUE DATE 2022-11-22	
DIRECTOR OF STRUCTURES, STATE BRIDGE ENGINEER - SCOTT WESTERFIELD, P.E. DEP. DIR. OF STRUCTURES, ASST. STATE BRIDGE ENGINEER - MICAH DEW, P.E.			SHEET NUMBER 8043



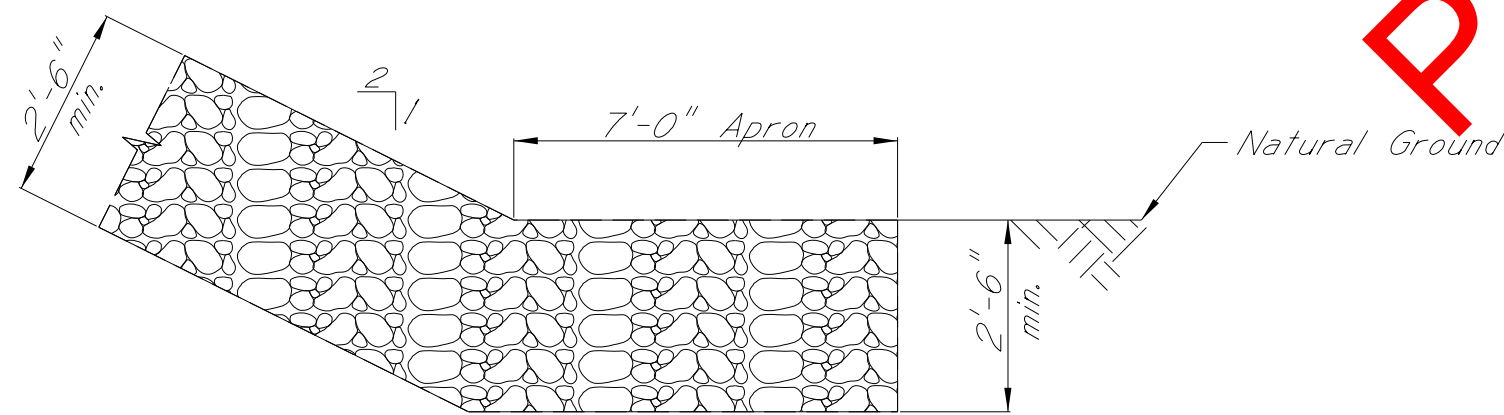
200 FT. VERTICAL CURVE

Total Length of Bridge = 272'-2"



ELEVATION WITH PROFILE ALONG & APPROACH ROADWAY  
Scale: 1" = 20'-0"

500 Year Scour Elevations	
Bent no.	Elevation
1	256.5
2	225.1
3	225.1
4	255.1



RIPRAP TOE DETAILS

DESIGN DATA:

Specifications. . . . . A.A.S.H.T.O., LRFD 9th Edition, 2020  
Loading. . . . . HL-93  
Roadway width. . . . . 36'-0" Gutter to Gutter  
Concrete. . . . . Class "AA" (4,000 p.s.i.)  
Class "BDX" (4,500 p.s.i.)  
Stay-in-Place metal forms. . . 18lbs./ft<sup>2</sup> (between flanges)  
Seismic Performance Zone. . . 2  
Seismic Soil Site Class. . . . C  
Seismic Operational Class. . . Other

NOTE:

Geotextile fabric is required under all riprap. All riprap and geotextile fabric shown on the bridge plans are included in the bridge quantities.

NOTE:

For General Notes & Est. Quantities and additional details see Sheet No. D1.

\*NOTE:

2:1 Slope Normal to End Bent.

DRAINAGE DATA:

Drainage area. . . . . 20.5 sq. mi.  
Total 025 (U.S.G.S.) . . . . . 4,390 c.f.s.  
Effective area . . . . . 905.0 sq. ft.

SPECIAL PROVISIONS:

Test Piles. . . . . 907-803  
Concrete Bridges and Structures . . . 907-804



MISSISSIPPI DEPARTMENT OF TRANSPORTATION  
BRIDGE AT STA. 525+93.92

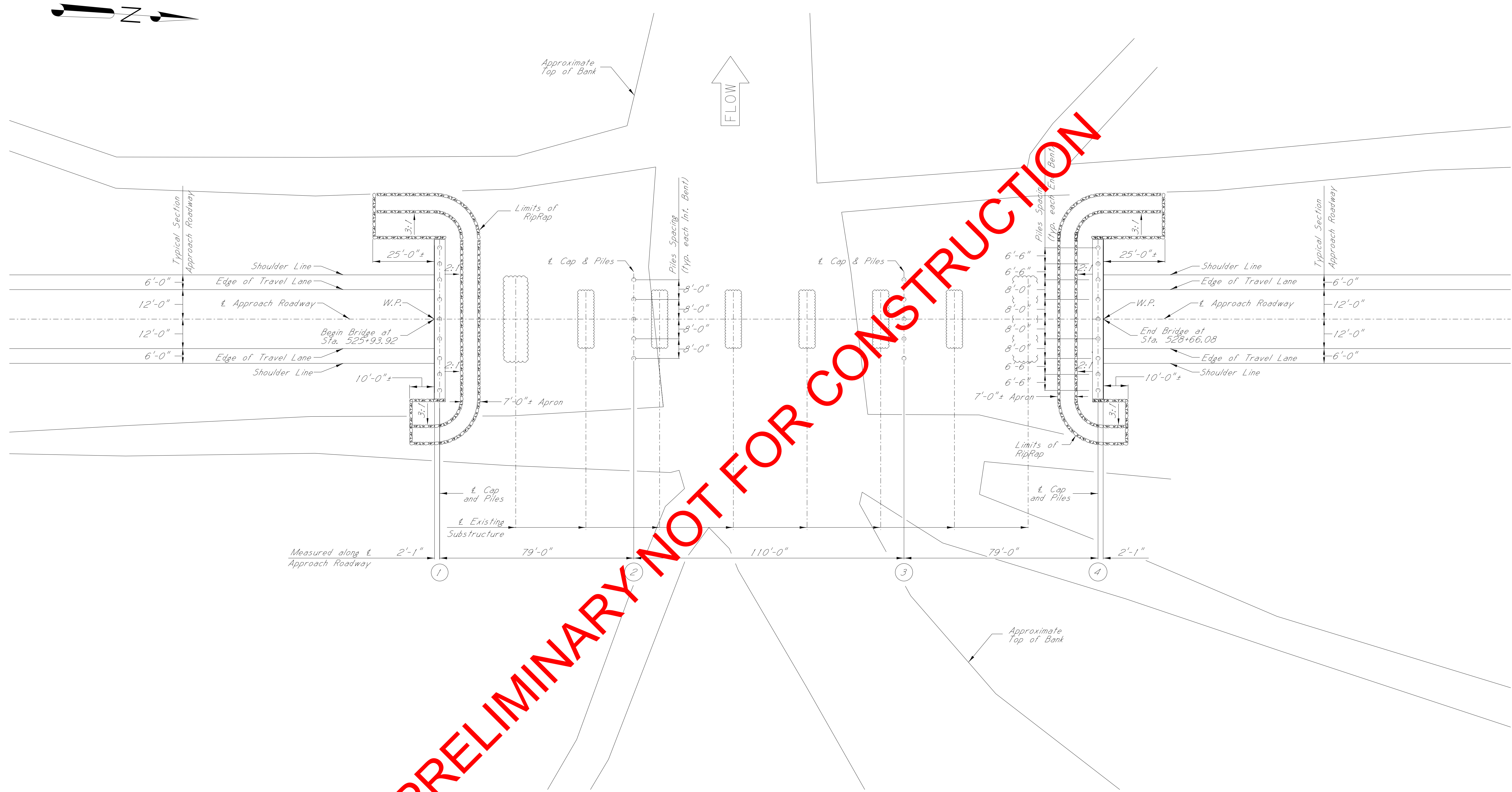
US 51 OVER  
TILLATOBA CREEK  
LAYOUT

FMS: 103332 / 301000  
COUNTY: YALOBUSHA  
PROJECT NUMBER: STBG-2901-00(025)

DESIGNER: Carlye Waldon  
CHECKER: Barrett Germond  
DETAILER: Carlye Waldon  
ISSUE DATE: 2022-11-22  
DIRECTOR OF STRUCTURES, STATE BRIDGE ENGINEER - SCOTT WESTERFIELD, P.E.  
DEP. DIR. OF STRUCTURES, ASST. STATE BRIDGE ENGINEER - MICAH DEW, P.E.

WORKING NUMBER  
D2 OF D17  
SHEET NUMBER  
8064





NOTE:  
For General Notes & Est. Quantities and additional details see Sheet No. D1.

NOTE:  
Geotextile fabric is required under all riprap. All riprap and geotextile fabric shown on the bridge plans are included in the bridge quantities.

— Denotes Existing Substructure

FOUNDATION PLAN  
Scale: 1" = 20'-0"



				BY	MISSISSIPPI DEPARTMENT OF TRANSPORTATION
					BRIDGE AT STA. 525+93.92
					US 51 OVER
					TILLATOBA CREEK
					FOUNDATION PLAN
				REVISION	FMS: 103332 / 301000
					COUNTY: YALOBUSHA
					PROJECT NUMBER: STBG-2901-00(025)
				DATE	DESIGNER: Carlye Waldon DETAILER: Carlye Waldon CHECKER: Barrett Germond ISSUE DATE: 2022-11-22 DIRECTOR OF STRUCTURES, STATE BRIDGE ENGINEER - SCOTT WESTERFIELD, P.E. DEP. DIR. OF STRUCTURES, ASST. STATE BRIDGE ENGINEER - MICAH DEW, P.E.
					WORKING NUMBER D3 OF D17 SHEET NUMBER 8065



**SPECIAL CONDITIONS**  
**NATIONWIDE PERMIT No. 23**

Approved Categorical Exclusions

Activities undertaken, assisted, authorized, regulated, funded, or financed, in whole or in part, by another Federal agency or department where:

(a) That agency or department has determined, pursuant to the Council on Environmental Quality's implementing regulations for the National Environmental Policy Act (40 CFR part 1500 et seq.), that the activity is categorically excluded from the requirement to prepare an environmental impact statement or environmental assessment analysis, because it is included within a category of actions which neither individually nor cumulatively have a significant effect on the human environment; and

(b) The Office of the Chief of Engineers (Attn: CECW-CO) has concurred with that agency's or department's determination that the activity is categorically excluded and approved the activity for authorization under NWP 23.

The Office of the Chief of Engineers may require additional conditions, including pre-construction notification, for authorization of an agency's categorical exclusions under this NWP.

Notification: Certain categorical exclusions approved for authorization under this NWP require the permittee to submit a pre-construction notification to the district engineer prior to commencing the activity (see general condition 32). The activities that require pre-construction notification are listed in the appropriate Regulatory Guidance Letter(s).

(Authorities: Sections 10 and 404)

Note: The agency or department may submit an application for an activity believed to be categorically excluded to the Office of the Chief of Engineers (Attn: CECW-CO). Prior to approval for authorization under this NWP of any agency's activity, the Office of the Chief of Engineers will solicit public comment. As of the date of issuance of this NWP, agencies with approved categorical exclusions are: the Bureau of Reclamation, Federal Highway Administration, and U.S. Coast Guard. Activities approved for authorization under this NWP as of the date of this notice are found in Corps Regulatory Guidance Letter 05-07. Any future approved categorical exclusions will be announced in Regulatory Guidance Letters and posted on this same web site.

## **2021 Nationwide Permits General Conditions, District Engineer's Decision and Further Information**

### **2021 Nationwide Permit General Conditions**

Note: To qualify for NWP authorization, the prospective permittee must comply with the following general conditions, as applicable, in addition to any regional or case-specific conditions imposed by the division engineer or district engineer. Prospective permittees should contact the appropriate Corps district office to determine if regional conditions have been imposed on an NWP. Prospective permittees should also contact the appropriate Corps district office to determine the status of Clean Water Act Section 401 water quality certification and/or Coastal Zone Management Act consistency for an NWP. Every person who may wish to obtain permit authorization under one or more NWPs, or who is currently relying on an existing or prior permit authorization under one or more NWPs, has been and is on notice that all of the provisions of 33 CFR 330.1 through 330.6 apply to every NWP authorization. Note especially 33 CFR 330.5 relating to the modification, suspension, or revocation of any NWP authorization.

1. Navigation. (a) No activity may cause more than a minimal adverse effect on navigation.

(b) Any safety lights and signals prescribed by the U.S. Coast Guard, through regulations or otherwise, must be installed and maintained at the permittee's expense on authorized facilities in navigable waters of the United States.

(c) The permittee understands and agrees that, if future operations by the United States require the removal, relocation, or other alteration, of the structure or work herein authorized, or if, in the opinion of the Secretary of the Army or his or her authorized representative, said structure or work shall cause unreasonable obstruction to the free navigation of the navigable waters, the permittee will be required, upon due notice from the Corps of Engineers, to remove, relocate, or alter the structural work or obstructions caused thereby, without expense to the United States. No claim shall be made against the United States on account of any such removal or alteration.

2. Aquatic Life Movements. No activity may substantially disrupt the necessary life cycle movements of those species of aquatic life indigenous to the waterbody, including those species that normally migrate through the area, unless the activity's primary purpose is to impound water. All permanent and temporary crossings of waterbodies shall be suitably culverted, bridged, or otherwise designed and constructed to maintain low flows to sustain the movement of those aquatic species. If a bottomless culvert cannot be used, then the crossing should be designed and constructed to minimize adverse effects to aquatic life movements.

3. Spawning Areas. Activities in spawning areas during spawning seasons must be avoided to the maximum extent practicable. Activities that result in the physical



destruction (e.g., through excavation, fill, or downstream smothering by substantial turbidity) of an important spawning area are not authorized.

4. Migratory Bird Breeding Areas. Activities in waters of the United States that serve as breeding areas for migratory birds must be avoided to the maximum extent practicable.

5. Shellfish Beds. No activity may occur in areas of concentrated shellfish populations, unless the activity is directly related to a shellfish harvesting activity authorized by NWP 4 and 48, or is a shellfish seeding or habitat restoration activity authorized by NWP 27.

6. Suitable Material. No activity may use unsuitable material (e.g., trash, debris, car bodies, asphalt, etc.). Material used for construction or discharged must be free from toxic pollutants in toxic amounts (see section 307 of the Clean Water Act).

7. Water Supply Intakes. No activity may occur in the proximity of a public water supply intake, except where the activity is for the repair or improvement of public water supply intake structures or adjacent bank stabilization.

8. Adverse Effects From Impoundments. If the activity creates an impoundment of water, adverse effects to the aquatic system due to accelerating the passage of water, and/or restricting its flow must be minimized to the maximum extent practicable.

9. Management of Water Flows. To the maximum extent practicable, the pre-construction course, condition, capacity, and location of open waters must be maintained for each activity, including stream channelization, storm water management activities, and temporary and permanent road crossings, except as provided below. The activity must be constructed to withstand expected high flows. The activity must not restrict or impede the passage of normal or high flows, unless the primary purpose of the activity is to impound water or manage high flows. The activity may alter the pre-construction course, condition, capacity, and location of open waters if it benefits the aquatic environment (e.g., stream restoration or relocation activities).

10. Fills Within 100-Year Floodplains. The activity must comply with applicable FEMA-approved state or local floodplain management requirements.

11. Equipment. Heavy equipment working in wetlands or mudflats must be placed on mats, or other measures must be taken to minimize soil disturbance.

12. Soil Erosion and Sediment Controls. Appropriate soil erosion and sediment controls must be used and maintained in effective operating condition during construction, and all exposed soil and other fills, as well as any work below the ordinary high water mark or high tide line, must be permanently stabilized at the earliest practicable date. Permittees are encouraged to perform work within waters of the United States during periods of low-flow or no-flow, or during low tides.

13. Removal of Temporary Structures and Fills. Temporary structures must be removed, to the maximum extent practicable, after their use has been discontinued. Temporary fills must be removed in their entirety and the affected areas returned to pre-construction elevations. The affected areas must be revegetated, as appropriate.

14. Proper Maintenance. Any authorized structure or fill shall be properly maintained, including maintenance to ensure public safety and compliance with applicable NWP general conditions, as well as any activity-specific conditions added by the district engineer to an NWP authorization.

15. Single and Complete Project. The activity must be a single and complete project. The same NWP cannot be used more than once for the same single and complete project.

16. Wild and Scenic Rivers. (a) No NWP activity may occur in a component of the National Wild and Scenic River System, or in a river officially designated by Congress as a “study river” for possible inclusion in the system while the river is in an official study status, unless the appropriate Federal agency with direct management responsibility for such river, has determined in writing that the proposed activity will not adversely affect the Wild and Scenic River designation or study status.

(b) If a proposed NWP activity will occur in a component of the National Wild and Scenic River System, or in a river officially designated by Congress as a “study river” for possible inclusion in the system while the river is in an official study status, the permittee must submit a pre-construction notification (see general condition 32). The district engineer will coordinate the PCN with the Federal agency with direct management responsibility for that river. Permittees shall not begin the NWP activity until notified by the district engineer that the Federal agency with direct management responsibility for that river has determined in writing that the proposed NWP activity will not adversely affect the Wild and Scenic River designation or study status.

(c) Information on Wild and Scenic Rivers may be obtained from the appropriate Federal land management agency responsible for the designated Wild and Scenic River or study river (e.g., National Park Service, U.S. Forest Service, Bureau of Land Management, U.S. Fish and Wildlife Service). Information on these rivers is also available at: <http://www.rivers.gov/>.

17. Tribal Rights. No activity or its operation may impair reserved tribal rights, including, but not limited to, reserved water rights and treaty fishing and hunting rights.

18. Endangered Species. (a) No activity is authorized under any NWP which is likely to directly or indirectly jeopardize the continued existence of a threatened or endangered species or a species proposed for such designation, as identified under the Federal Endangered Species Act (ESA), or which will directly or indirectly destroy or adversely modify designated critical habitat or critical habitat proposed for such designation. No activity is authorized under any NWP which “may affect” a listed species or critical



habitat, unless ESA section 7 consultation addressing the consequences of the proposed activity on listed species or critical habitat has been completed. See 50 CFR 402.02 for the definition of “effects of the action” for the purposes of ESA section 7 consultation, as well as 50 CFR 402.17, which provides further explanation under ESA section 7 regarding “activities that are reasonably certain to occur” and “consequences caused by the proposed action.”

(b) Federal agencies should follow their own procedures for complying with the requirements of the ESA (see 33 CFR 330.4(f)(1)). If pre-construction notification is required for the proposed activity, the Federal permittee must provide the district engineer with the appropriate documentation to demonstrate compliance with those requirements. The district engineer will verify that the appropriate documentation has been submitted. If the appropriate documentation has not been submitted, additional ESA section 7 consultation may be necessary for the activity and the respective federal agency would be responsible for fulfilling its obligation under section 7 of the ESA.

(c) Non-federal permittees must submit a pre-construction notification to the district engineer if any listed species (or species proposed for listing) or designated critical habitat (or critical habitat proposed such designation) might be affected or is in the vicinity of the activity, or if the activity is located in designated critical habitat or critical habitat proposed for such designation, and shall not begin work on the activity until notified by the district engineer that the requirements of the ESA have been satisfied and that the activity is authorized. For activities that might affect Federally-listed endangered or threatened species (or species proposed for listing) or designated critical habitat (or critical habitat proposed for such designation), the pre-construction notification must include the name(s) of the endangered or threatened species (or species proposed for listing) that might be affected by the proposed activity or that utilize the designated critical habitat (or critical habitat proposed for such designation) that might be affected by the proposed activity. The district engineer will determine whether the proposed activity “may affect” or will have “no effect” to listed species and designated critical habitat and will notify the non-Federal applicant of the Corps’ determination within 45 days of receipt of a complete pre-construction notification. For activities where the non-Federal applicant has identified listed species (or species proposed for listing) or designated critical habitat (or critical habitat proposed for such designation) that might be affected or is in the vicinity of the activity, and has so notified the Corps, the applicant shall not begin work until the Corps has provided notification that the proposed activity will have “no effect” on listed species (or species proposed for listing or designated critical habitat (or critical habitat proposed for such designation), or until ESA section 7 consultation or conference has been completed. If the non-Federal applicant has not heard back from the Corps within 45 days, the applicant must still wait for notification from the Corps.

(d) As a result of formal or informal consultation or conference with the FWS or NMFS the district engineer may add species-specific permit conditions to the NWP.

(e) Authorization of an activity by an NWP does not authorize the "take" of a threatened or endangered species as defined under the ESA. In the absence of separate authorization (e.g., an ESA Section 10 Permit, a Biological Opinion with "incidental take" provisions, etc.) from the FWS or the NMFS, the Endangered Species Act prohibits any person subject to the jurisdiction of the United States to take a listed species, where "take" means to harass, harm, pursue, hunt, shoot, wound, kill, trap, capture, or collect, or to attempt to engage in any such conduct. The word "harm" in the definition of "take" means an act which actually kills or injures wildlife. Such an act may include significant habitat modification or degradation where it actually kills or injures wildlife by significantly impairing essential behavioral patterns, including breeding, feeding or sheltering.

(f) If the non-federal permittee has a valid ESA section 10(a)(1)(B) incidental take permit with an approved Habitat Conservation Plan for a project or a group of projects that includes the proposed NWP activity, the non-federal applicant should provide a copy of that ESA section 10(a)(1)(B) permit with the PCN required by paragraph (c) of this general condition. The district engineer will coordinate with the agency that issued the ESA section 10(a)(1)(B) permit to determine whether the proposed NWP activity and the associated incidental take were considered in the internal ESA section 7 consultation conducted for the ESA section 10(a)(1)(B) permit. If that coordination results in concurrence from the agency that the proposed NWP activity and the associated incidental take were considered in the internal ESA section 7 consultation for the ESA section 10(a)(1)(B) permit, the district engineer does not need to conduct a separate ESA section 7 consultation for the proposed NWP activity. The district engineer will notify the non-federal applicant within 45 days of receipt of a complete pre-construction notification whether the ESA section 10(a)(1)(B) permit covers the proposed NWP activity or whether additional ESA section 7 consultation is required.

(g) Information on the location of threatened and endangered species and their critical habitat can be obtained directly from the offices of the FWS and NMFS or their world wide web pages at <http://www.fws.gov/> or <http://www.fws.gov/ipac> and <http://www.nmfs.noaa.gov/pr/species/esa/> respectively.

19. Migratory Birds and Bald and Golden Eagles. The permittee is responsible for ensuring that an action authorized by an NWP complies with the Migratory Bird Treaty Act and the Bald and Golden Eagle Protection Act. The permittee is responsible for contacting the appropriate local office of the U.S. Fish and Wildlife Service to determine what measures, if any, are necessary or appropriate to reduce adverse effects to migratory birds or eagles, including whether "incidental take" permits are necessary and available under the Migratory Bird Treaty Act or Bald and Golden Eagle Protection Act for a particular activity.

20. Historic Properties. (a) No activity is authorized under any NWP which may have the potential to cause effects to properties listed, or eligible for listing, in the National Register of Historic Places until the requirements of Section 106 of the National Historic Preservation Act (NHPA) have been satisfied.



(b) Federal permittees should follow their own procedures for complying with the requirements of section 106 of the National Historic Preservation Act (see 33 CFR 330.4(g)(1)). If pre-construction notification is required for the proposed NWP activity, the Federal permittee must provide the district engineer with the appropriate documentation to demonstrate compliance with those requirements. The district engineer will verify that the appropriate documentation has been submitted. If the appropriate documentation is not submitted, then additional consultation under section 106 may be necessary. The respective federal agency is responsible for fulfilling its obligation to comply with section 106.

(c) Non-federal permittees must submit a pre-construction notification to the district engineer if the NWP activity might have the potential to cause effects to any historic properties listed on, determined to be eligible for listing on, or potentially eligible for listing on the National Register of Historic Places, including previously unidentified properties. For such activities, the pre-construction notification must state which historic properties might have the potential to be affected by the proposed NWP activity or include a vicinity map indicating the location of the historic properties or the potential for the presence of historic properties. Assistance regarding information on the location of, or potential for, the presence of historic properties can be sought from the State Historic Preservation Officer, Tribal Historic Preservation Officer, or designated tribal representative, as appropriate, and the National Register of Historic Places (see 33 CFR 330.4(g)). When reviewing pre-construction notifications, district engineers will comply with the current procedures for addressing the requirements of section 106 of the National Historic Preservation Act. The district engineer shall make a reasonable and good faith effort to carry out appropriate identification efforts commensurate with potential impacts, which may include background research, consultation, oral history interviews, sample field investigation, and/or field survey. Based on the information submitted in the PCN and these identification efforts, the district engineer shall determine whether the proposed NWP activity has the potential to cause effects on the historic properties. Section 106 consultation is not required when the district engineer determines that the activity does not have the potential to cause effects on historic properties (see 36 CFR 800.3(a)). Section 106 consultation is required when the district engineer determines that the activity has the potential to cause effects on historic properties. The district engineer will conduct consultation with consulting parties identified under 36 CFR 800.2(c) when he or she makes any of the following effect determinations for the purposes of section 106 of the NHPA: no historic properties affected, no adverse effect, or adverse effect.

(d) Where the non-Federal applicant has identified historic properties on which the proposed NWP activity might have the potential to cause effects and has so notified the Corps, the non-Federal applicant shall not begin the activity until notified by the district engineer either that the activity has no potential to cause effects to historic properties or that NHPA section 106 consultation has been completed. For non-federal permittees, the district engineer will notify the prospective permittee within 45 days of receipt of a complete pre-construction notification whether NHPA section 106 consultation is

required. If NHPA section 106 consultation is required, the district engineer will notify the non-Federal applicant that he or she cannot begin the activity until section 106 consultation is completed. If the non-Federal applicant has not heard back from the Corps within 45 days, the applicant must still wait for notification from the Corps.

(e) Prospective permittees should be aware that section 110k of the NHPA (54 U.S.C. 306113) prevents the Corps from granting a permit or other assistance to an applicant who, with intent to avoid the requirements of section 106 of the NHPA, has intentionally significantly adversely affected a historic property to which the permit would relate, or having legal power to prevent it, allowed such significant adverse effect to occur, unless the Corps, after consultation with the Advisory Council on Historic Preservation (ACHP), determines that circumstances justify granting such assistance despite the adverse effect created or permitted by the applicant. If circumstances justify granting the assistance, the Corps is required to notify the ACHP and provide documentation specifying the circumstances, the degree of damage to the integrity of any historic properties affected, and proposed mitigation. This documentation must include any views obtained from the applicant, SHPO/THPO, appropriate Indian tribes if the undertaking occurs on or affects historic properties on tribal lands or affects properties of interest to those tribes, and other parties known to have a legitimate interest in the impacts to the permitted activity on historic properties.

21. Discovery of Previously Unknown Remains and Artifacts. Permittees that discover any previously unknown historic, cultural or archeological remains and artifacts while accomplishing the activity authorized by an NWP, they must immediately notify the district engineer of what they have found, and to the maximum extent practicable, avoid construction activities that may affect the remains and artifacts until the required coordination has been completed. The district engineer will initiate the Federal, Tribal, and state coordination required to determine if the items or remains warrant a recovery effort or if the site is eligible for listing in the National Register of Historic Places.

22. Designated Critical Resource Waters. Critical resource waters include, NOAA-managed marine sanctuaries and marine monuments, and National Estuarine Research Reserves. The district engineer may designate, after notice and opportunity for public comment, additional waters officially designated by a state as having particular environmental or ecological significance, such as outstanding national resource waters or state natural heritage sites. The district engineer may also designate additional critical resource waters after notice and opportunity for public comment.

(a) Discharges of dredged or fill material into waters of the United States are not authorized by NWPs 7, 12, 14, 16, 17, 21, 29, 31, 35, 39, 40, 42, 43, 44, 49, 50, 51, 52, 57 and 58 for any activity within, or directly affecting, critical resource waters, including wetlands adjacent to such waters.

(b) For NWPs 3, 8, 10, 13, 15, 18, 19, 22, 23, 25, 27, 28, 30, 33, 34, 36, 37, 38, and 54, notification is required in accordance with general condition 32, for any activity proposed by permittees in the designated critical resource waters including wetlands adjacent to



those waters. The district engineer may authorize activities under these NWP's only after she or he determines that the impacts to the critical resource waters will be no more than minimal.

23. Mitigation. The district engineer will consider the following factors when determining appropriate and practicable mitigation necessary to ensure that the individual and cumulative adverse environmental effects are no more than minimal:

(a) The activity must be designed and constructed to avoid and minimize adverse effects, both temporary and permanent, to waters of the United States to the maximum extent practicable at the project site (i.e., on site).

(b) Mitigation in all its forms (avoiding, minimizing, rectifying, reducing, or compensating for resource losses) will be required to the extent necessary to ensure that the individual and cumulative adverse environmental effects are no more than minimal.

(c) Compensatory mitigation at a minimum one-for-one ratio will be required for all wetland losses that exceed 1/10-acre and require pre-construction notification, unless the district engineer determines in writing that either some other form of mitigation would be more environmentally appropriate or the adverse environmental effects of the proposed activity are no more than minimal, and provides an activity-specific waiver of this requirement. For wetland losses of 1/10-acre or less that require pre-construction notification, the district engineer may determine on a case-by-case basis that compensatory mitigation is required to ensure that the activity results in only minimal adverse environmental effects.

(d) Compensatory mitigation at a minimum one-for-one ratio will be required for all losses of stream bed that exceed 3/100-acre and require pre-construction notification, unless the district engineer determines in writing that either some other form of mitigation would be more environmentally appropriate or the adverse environmental effects of the proposed activity are no more than minimal, and provides an activity-specific waiver of this requirement. This compensatory mitigation requirement may be satisfied through the restoration or enhancement of riparian areas next to streams in accordance with paragraph (e) of this general condition. For losses of stream bed of 3/100-acre or less that require pre-construction notification, the district engineer may determine on a case-by-case basis that compensatory mitigation is required to ensure that the activity results in only minimal adverse environmental effects. Compensatory mitigation for losses of streams should be provided, if practicable, through stream rehabilitation, enhancement, or preservation, since streams are difficult-to-replace resources (see 33 CFR 332.3(e)(3)).

(e) Compensatory mitigation plans for NWP activities in or near streams or other open waters will normally include a requirement for the restoration or enhancement, maintenance, and legal protection (e.g., conservation easements) of riparian areas next to open waters. In some cases, the restoration or maintenance/protection of riparian areas may be the only compensatory mitigation required. If restoring riparian areas

involves planting vegetation, only native species should be planted. The width of the required riparian area will address documented water quality or aquatic habitat loss concerns. Normally, the riparian area will be 25 to 50 feet wide on each side of the stream, but the district engineer may require slightly wider riparian areas to address documented water quality or habitat loss concerns. If it is not possible to restore or maintain/protect a riparian area on both sides of a stream, or if the waterbody is a lake or coastal waters, then restoring or maintaining/protecting a riparian area along a single bank or shoreline may be sufficient. Where both wetlands and open waters exist on the project site, the district engineer will determine the appropriate compensatory mitigation (e.g., riparian areas and/or wetlands compensation) based on what is best for the aquatic environment on a watershed basis. In cases where riparian areas are determined to be the most appropriate form of minimization or compensatory mitigation, the district engineer may waive or reduce the requirement to provide wetland compensatory mitigation for wetland losses.

(f) Compensatory mitigation projects provided to offset losses of aquatic resources must comply with the applicable provisions of 33 CFR part 332.

(1) The prospective permittee is responsible for proposing an appropriate compensatory mitigation option if compensatory mitigation is necessary to ensure that the activity results in no more than minimal adverse environmental effects. For the NWP, the preferred mechanism for providing compensatory mitigation is mitigation bank credits or in-lieu fee program credits (see 33 CFR 332.3(b)(2) and (3)). However, if an appropriate number and type of mitigation bank or in-lieu credits are not available at the time the PCN is submitted to the district engineer, the district engineer may approve the use of permittee-responsible mitigation.

(2) The amount of compensatory mitigation required by the district engineer must be sufficient to ensure that the authorized activity results in no more than minimal individual and cumulative adverse environmental effects (see 33 CFR 330.1(e)(3)). (See also 33 CFR 332.3(f).)

(3) Since the likelihood of success is greater and the impacts to potentially valuable uplands are reduced, aquatic resource restoration should be the first compensatory mitigation option considered for permittee-responsible mitigation.

(4) If permittee-responsible mitigation is the proposed option, the prospective permittee is responsible for submitting a mitigation plan. A conceptual or detailed mitigation plan may be used by the district engineer to make the decision on the NWP verification request, but a final mitigation plan that addresses the applicable requirements of 33 CFR 332.4(c)(2) through (14) must be approved by the district engineer before the permittee begins work in waters of the United States, unless the district engineer determines that prior approval of the final mitigation plan is not practicable or not necessary to ensure timely completion of the required compensatory mitigation (see 33 CFR 332.3(k)(3)). If permittee-responsible mitigation is the proposed option, and the proposed compensatory mitigation site is located on land in which another federal



agency holds an easement, the district engineer will coordinate with that federal agency to determine if proposed compensatory mitigation project is compatible with the terms of the easement.

(5) If mitigation bank or in-lieu fee program credits are the proposed option, the mitigation plan needs to address only the baseline conditions at the impact site and the number of credits to be provided (see 33 CFR 332.4(c)(1)(ii)).

(6) Compensatory mitigation requirements (e.g., resource type and amount to be provided as compensatory mitigation, site protection, ecological performance standards, monitoring requirements) may be addressed through conditions added to the NWP authorization, instead of components of a compensatory mitigation plan (see 33 CFR 332.4(c)(1)(ii)).

(g) Compensatory mitigation will not be used to increase the acreage losses allowed by the acreage limits of the NWPs. For example, if an NWP has an acreage limit of 1/2-acre, it cannot be used to authorize any NWP activity resulting in the loss of greater than 1/2-acre of waters of the United States, even if compensatory mitigation is provided that replaces or restores some of the lost waters. However, compensatory mitigation can and should be used, as necessary, to ensure that an NWP activity already meeting the established acreage limits also satisfies the no more than minimal impact requirement for the NWPs.

(h) Permittees may propose the use of mitigation banks, in-lieu fee programs, or permittee-responsible mitigation. When developing a compensatory mitigation proposal, the permittee must consider appropriate and practicable options consistent with the framework at 33 CFR 332.3(b). For activities resulting in the loss of marine or estuarine resources, permittee-responsible mitigation may be environmentally preferable if there are no mitigation banks or in-lieu fee programs in the area that have marine or estuarine credits available for sale or transfer to the permittee. For permittee-responsible mitigation, the special conditions of the NWP verification must clearly indicate the party or parties responsible for the implementation and performance of the compensatory mitigation project, and, if required, its long-term management.

(i) Where certain functions and services of waters of the United States are permanently adversely affected by a regulated activity, such as discharges of dredged or fill material into waters of the United States that will convert a forested or scrub-shrub wetland to a herbaceous wetland in a permanently maintained utility line right-of-way, mitigation may be required to reduce the adverse environmental effects of the activity to the no more than minimal level.

24. Safety of Impoundment Structures. To ensure that all impoundment structures are safely designed, the district engineer may require non-Federal applicants to demonstrate that the structures comply with established state or federal, dam safety criteria or have been designed by qualified persons. The district engineer may also

require documentation that the design has been independently reviewed by similarly qualified persons, and appropriate modifications made to ensure safety.

25. Water Quality. (a) Where the certifying authority (state, authorized tribe, or EPA, as appropriate) has not previously certified compliance of an NWP with CWA section 401, a CWA section 401 water quality certification for the proposed discharge must be obtained or waived (see 33 CFR 330.4(c)). If the permittee cannot comply with all of the conditions of a water quality certification previously issued by certifying authority for the issuance of the NWP, then the permittee must obtain a water quality certification or waiver for the proposed discharge in order for the activity to be authorized by an NWP.

(b) If the NWP activity requires pre-construction notification and the certifying authority has not previously certified compliance of an NWP with CWA section 401, the proposed discharge is not authorized by an NWP until water quality certification is obtained or waived. If the certifying authority issues a water quality certification for the proposed discharge, the permittee must submit a copy of the certification to the district engineer. The discharge is not authorized by an NWP until the district engineer has notified the permittee that the water quality certification requirement has been satisfied by the issuance of a water quality certification or a waiver.

(c) The district engineer or certifying authority may require additional water quality management measures to ensure that the authorized activity does not result in more than minimal degradation of water quality.

26. Coastal Zone Management. In coastal states where an NWP has not previously received a state coastal zone management consistency concurrence, an individual state coastal zone management consistency concurrence must be obtained, or a presumption of concurrence must occur (see 33 CFR 330.4(d)). If the permittee cannot comply with all of the conditions of a coastal zone management consistency concurrence previously issued by the state, then the permittee must obtain an individual coastal zone management consistency concurrence or presumption of concurrence in order for the activity to be authorized by an NWP. The district engineer or a state may require additional measures to ensure that the authorized activity is consistent with state coastal zone management requirements.

27. Regional and Case-By-Case Conditions. The activity must comply with any regional conditions that may have been added by the Division Engineer (see 33 CFR 330.4(e)) and with any case specific conditions added by the Corps or by the state, Indian Tribe, or U.S. EPA in its CWA section 401 Water Quality Certification, or by the state in its Coastal Zone Management Act consistency determination.

28. Use of Multiple Nationwide Permits. The use of more than one NWP for a single and complete project is authorized, subject to the following restrictions:

(a) If only one of the NWPs used to authorize the single and complete project has a specified acreage limit, the acreage loss of waters of the United States cannot exceed



the acreage limit of the NWP with the highest specified acreage limit. For example, if a road crossing over tidal waters is constructed under NWP 14, with associated bank stabilization authorized by NWP 13, the maximum acreage loss of waters of the United States for the total project cannot exceed 1/3-acre.

(b) If one or more of the NWPs used to authorize the single and complete project has specified acreage limits, the acreage loss of waters of the United States authorized by those NWPs cannot exceed their respective specified acreage limits. For example, if a commercial development is constructed under NWP 39, and the single and complete project includes the filling of an upland ditch authorized by NWP 46, the maximum acreage loss of waters of the United States for the commercial development under NWP 39 cannot exceed 1/2-acre, and the total acreage loss of waters of United States due to the NWP 39 and 46 activities cannot exceed 1 acre.

29. Transfer of Nationwide Permit Verifications. If the permittee sells the property associated with a nationwide permit verification, the permittee may transfer the nationwide permit verification to the new owner by submitting a letter to the appropriate Corps district office to validate the transfer. A copy of the nationwide permit verification must be attached to the letter, and the letter must contain the following statement and signature:

“When the structures or work authorized by this nationwide permit are still in existence at the time the property is transferred, the terms and conditions of this nationwide permit, including any special conditions, will continue to be binding on the new owner(s) of the property. To validate the transfer of this nationwide permit and the associated liabilities associated with compliance with its terms and conditions, have the transferee sign and date below.”

---

(Transferee)

---

(Date)

30. Compliance Certification. Each permittee who receives an NWP verification letter from the Corps must provide a signed certification documenting completion of the authorized activity and implementation of any required compensatory mitigation. The success of any required permittee-responsible mitigation, including the achievement of ecological performance standards, will be addressed separately by the district engineer. The Corps will provide the permittee the certification document with the NWP verification letter. The certification document will include:

- (a) A statement that the authorized activity was done in accordance with the NWP authorization, including any general, regional, or activity-specific conditions;
- (b) A statement that the implementation of any required compensatory mitigation was completed in accordance with the permit conditions. If credits from a mitigation bank or in-lieu fee program are used to satisfy the compensatory mitigation requirements, the certification must include the documentation required by 33 CFR 332.3(l)(3) to confirm that the permittee secured the appropriate number and resource type of credits; and
- (c) The signature of the permittee certifying the completion of the activity and mitigation.

The completed certification document must be submitted to the district engineer within 30 days of completion of the authorized activity or the implementation of any required compensatory mitigation, whichever occurs later.

31. Activities Affecting Structures or Works Built by the United States. If an NWP activity also requires review by, or permission from, the Corps pursuant to 33 U.S.C. 408 because it will alter or temporarily or permanently occupy or use a U.S. Army Corps of Engineers (USACE) federally authorized Civil Works project (a "USACE project"), the prospective permittee must submit a pre-construction notification. See paragraph (b)(10) of general condition 32. An activity that requires section 408 permission and/or review is not authorized by an NWP until the appropriate Corps office issues the section 408 permission or completes its review to alter, occupy, or use the USACE project, and the district engineer issues a written NWP verification.

32. Pre-Construction Notification. (a) *Timing.* Where required by the terms of the NWP, the prospective permittee must notify the district engineer by submitting a pre-construction notification (PCN) as early as possible. The district engineer must determine if the PCN is complete within 30 calendar days of the date of receipt and, if the PCN is determined to be incomplete, notify the prospective permittee within that 30 day period to request the additional information necessary to make the PCN complete. The request must specify the information needed to make the PCN complete. As a general rule, district engineers will request additional information necessary to make the PCN complete only once. However, if the prospective permittee does not provide all of the requested information, then the district engineer will notify the prospective permittee that the PCN is still incomplete and the PCN review process will not commence until all of the requested information has been received by the district engineer. The prospective permittee shall not begin the activity until either:

- (1) He or she is notified in writing by the district engineer that the activity may proceed under the NWP with any special conditions imposed by the district or division engineer; or
- (2) 45 calendar days have passed from the district engineer's receipt of the complete PCN and the prospective permittee has not received written notice from the district or division engineer. However, if the permittee was required to notify the Corps pursuant to



general condition 18 that listed species or critical habitat might be affected or are in the vicinity of the activity, or to notify the Corps pursuant to general condition 20 that the activity might have the potential to cause effects to historic properties, the permittee cannot begin the activity until receiving written notification from the Corps that there is “no effect” on listed species or “no potential to cause effects” on historic properties, or that any consultation required under Section 7 of the Endangered Species Act (see 33 CFR 330.4(f)) and/or section 106 of the National Historic Preservation Act (see 33 CFR 330.4(g)) has been completed. If the proposed activity requires a written waiver to exceed specified limits of an NWP, the permittee may not begin the activity until the district engineer issues the waiver. If the district or division engineer notifies the permittee in writing that an individual permit is required within 45 calendar days of receipt of a complete PCN, the permittee cannot begin the activity until an individual permit has been obtained. Subsequently, the permittee’s right to proceed under the NWP may be modified, suspended, or revoked only in accordance with the procedure set forth in 33 CFR 330.5(d)(2).

(b) *Contents of Pre-Construction Notification:* The PCN must be in writing and include the following information:

- (1) Name, address and telephone numbers of the prospective permittee;
- (2) Location of the proposed activity;
- (3) Identify the specific NWP or NWP(s) the prospective permittee wants to use to authorize the proposed activity;
- (4) (i) A description of the proposed activity; the activity’s purpose; direct and indirect adverse environmental effects the activity would cause, including the anticipated amount of loss of wetlands, other special aquatic sites, and other waters expected to result from the NWP activity, in acres, linear feet, or other appropriate unit of measure; a description of any proposed mitigation measures intended to reduce the adverse environmental effects caused by the proposed activity; and any other NWP(s), regional general permit(s), or individual permit(s) used or intended to be used to authorize any part of the proposed project or any related activity, including other separate and distant crossings for linear projects that require Department of the Army authorization but do not require pre-construction notification. The description of the proposed activity and any proposed mitigation measures should be sufficiently detailed to allow the district engineer to determine that the adverse environmental effects of the activity will be no more than minimal and to determine the need for compensatory mitigation or other mitigation measures.
- (ii) For linear projects where one or more single and complete crossings require pre-construction notification, the PCN must include the quantity of anticipated losses of wetlands, other special aquatic sites, and other waters for each single and complete crossing of those wetlands, other special aquatic sites, and other waters (including those single and complete crossings authorized by an NWP but do not require PCNs).

This information will be used by the district engineer to evaluate the cumulative adverse environmental effects of the proposed linear project, and does not change those non-PCN NWP activities into NWP PCNs.

(iii) Sketches should be provided when necessary to show that the activity complies with the terms of the NWP. (Sketches usually clarify the activity and when provided results in a quicker decision. Sketches should contain sufficient detail to provide an illustrative description of the proposed activity (e.g., a conceptual plan), but do not need to be detailed engineering plans);

(5) The PCN must include a delineation of wetlands, other special aquatic sites, and other waters, such as lakes and ponds, and perennial and intermittent streams, on the project site. Wetland delineations must be prepared in accordance with the current method required by the Corps. The permittee may ask the Corps to delineate the special aquatic sites and other waters on the project site, but there may be a delay if the Corps does the delineation, especially if the project site is large or contains many wetlands, other special aquatic sites, and other waters. Furthermore, the 45-day period will not start until the delineation has been submitted to or completed by the Corps, as appropriate;

(6) If the proposed activity will result in the loss of greater than 1/10-acre of wetlands or 3/100-acre of stream bed and a PCN is required, the prospective permittee must submit a statement describing how the mitigation requirement will be satisfied, or explaining why the adverse environmental effects are no more than minimal and why compensatory mitigation should not be required. As an alternative, the prospective permittee may submit a conceptual or detailed mitigation plan.

(7) For non-federal permittees, if any listed species (or species proposed for listing) or designated critical habitat (or critical habitat proposed for such designation) might be affected or is in the vicinity of the activity, or if the activity is located in designated critical habitat (or critical habitat proposed for such designation), the PCN must include the name(s) of those endangered or threatened species (or species proposed for listing) that might be affected by the proposed activity or utilize the designated critical habitat (or critical habitat proposed for such designation) that might be affected by the proposed activity. For NWP activities that require pre-construction notification, Federal permittees must provide documentation demonstrating compliance with the Endangered Species Act;

(8) For non-federal permittees, if the NWP activity might have the potential to cause effects to a historic property listed on, determined to be eligible for listing on, or potentially eligible for listing on, the National Register of Historic Places, the PCN must state which historic property might have the potential to be affected by the proposed activity or include a vicinity map indicating the location of the historic property. For NWP activities that require pre-construction notification, Federal permittees must provide documentation demonstrating compliance with section 106 of the National Historic Preservation Act;



(9) For an activity that will occur in a component of the National Wild and Scenic River System, or in a river officially designated by Congress as a “study river” for possible inclusion in the system while the river is in an official study status, the PCN must identify the Wild and Scenic River or the “study river” (see general condition 16); and

(10) For an NWP activity that requires permission from, or review by, the Corps pursuant to 33 U.S.C. 408 because it will alter or temporarily or permanently occupy or use a U.S. Army Corps of Engineers federally authorized civil works project, the pre-construction notification must include a statement confirming that the project proponent has submitted a written request for section 408 permission from, or review by, the Corps office having jurisdiction over that USACE project.

(c) *Form of Pre-Construction Notification:* The nationwide permit pre-construction notification form (Form ENG 6082) should be used for NWP PCNs. A letter containing the required information may also be used. Applicants may provide electronic files of PCNs and supporting materials if the district engineer has established tools and procedures for electronic submittals.

(d) *Agency Coordination:* (1) The district engineer will consider any comments from Federal and state agencies concerning the proposed activity’s compliance with the terms and conditions of the NWPs and the need for mitigation to reduce the activity’s adverse environmental effects so that they are no more than minimal.

(2) Agency coordination is required for: (i) all NWP activities that require pre-construction notification and result in the loss of greater than 1/2-acre of waters of the United States; (ii) NWP 13 activities in excess of 500 linear feet, fills greater than one cubic yard per running foot, or involve discharges of dredged or fill material into special aquatic sites; and (iii) NWP 54 activities in excess of 500 linear feet, or that extend into the waterbody more than 30 feet from the mean low water line in tidal waters or the ordinary high water mark in the Great Lakes.

(3) When agency coordination is required, the district engineer will immediately provide (e.g., via e-mail, facsimile transmission, overnight mail, or other expeditious manner) a copy of the complete PCN to the appropriate Federal or state offices (FWS, state natural resource or water quality agency, EPA, and, if appropriate, the NMFS). With the exception of NWP 37, these agencies will have 10 calendar days from the date the material is transmitted to notify the district engineer via telephone, facsimile transmission, or e-mail that they intend to provide substantive, site-specific comments. The comments must explain why the agency believes the adverse environmental effects will be more than minimal. If so contacted by an agency, the district engineer will wait an additional 15 calendar days before making a decision on the pre-construction notification. The district engineer will fully consider agency comments received within the specified time frame concerning the proposed activity’s compliance with the terms and conditions of the NWPs, including the need for mitigation to ensure that the net adverse environmental effects of the proposed activity are no more than minimal. The

district engineer will provide no response to the resource agency, except as provided below. The district engineer will indicate in the administrative record associated with each pre-construction notification that the resource agencies' concerns were considered. For NWP 37, the emergency watershed protection and rehabilitation activity may proceed immediately in cases where there is an unacceptable hazard to life or a significant loss of property or economic hardship will occur. The district engineer will consider any comments received to decide whether the NWP 37 authorization should be modified, suspended, or revoked in accordance with the procedures at 33 CFR 330.5.

(4) In cases of where the prospective permittee is not a Federal agency, the district engineer will provide a response to NMFS within 30 calendar days of receipt of any Essential Fish Habitat conservation recommendations, as required by section 305(b)(4)(B) of the Magnuson-Stevens Fishery Conservation and Management Act.

(5) Applicants are encouraged to provide the Corps with either electronic files or multiple copies of pre-construction notifications to expedite agency coordination.

## **2021 District Engineer's Decision**

1. In reviewing the PCN for the proposed activity, the district engineer will determine whether the activity authorized by the NWP will result in more than minimal individual or cumulative adverse environmental effects or may be contrary to the public interest. If a project proponent requests authorization by a specific NWP, the district engineer should issue the NWP verification for that activity if it meets the terms and conditions of that NWP, unless he or she determines, after considering mitigation, that the proposed activity will result in more than minimal individual and cumulative adverse effects on the aquatic environment and other aspects of the public interest and exercises discretionary authority to require an individual permit for the proposed activity. For a linear project, this determination will include an evaluation of the single and complete crossings of waters of the United States that require PCNs to determine whether they individually satisfy the terms and conditions of the NWP(s), as well as the cumulative effects caused by all of the crossings of waters of the United States authorized by an NWP. If an applicant requests a waiver of an applicable limit, as provided for in NWPs 13, 36, or 54, the district engineer will only grant the waiver upon a written determination that the NWP activity will result in only minimal individual and cumulative adverse environmental effects.

2. When making minimal adverse environmental effects determinations the district engineer will consider the direct and indirect effects caused by the NWP activity. He or she will also consider the cumulative adverse environmental effects caused by activities authorized by an NWP and whether those cumulative adverse environmental effects are no more than minimal. The district engineer will also consider site specific factors, such as the environmental setting in the vicinity of the NWP activity, the type of resource that will be affected by the NWP activity, the functions provided by the aquatic resources that will be affected by the NWP activity, the degree or magnitude to which the aquatic

resources perform those functions, the extent that aquatic resource functions will be lost as a result of the NWP activity (e.g., partial or complete loss), the duration of the adverse effects (temporary or permanent), the importance of the aquatic resource functions to the region (e.g., watershed or ecoregion), and mitigation required by the district engineer. If an appropriate functional or condition assessment method is available and practicable to use, that assessment method may be used by the district engineer to assist in the minimal adverse environmental effects determination. The district engineer may add case-specific special conditions to the NWP authorization to address site-specific environmental concerns.

3. If the proposed activity requires a PCN and will result in a loss of greater than 1/10-acre of wetlands or 3/100-acre of stream bed, the prospective permittee should submit a mitigation proposal with the PCN. Applicants may also propose compensatory mitigation for NWP activities with smaller impacts, or for impacts to other types of waters. The district engineer will consider any proposed compensatory mitigation or other mitigation measures the applicant has included in the proposal in determining whether the net adverse environmental effects of the proposed activity are no more than minimal. The compensatory mitigation proposal may be either conceptual or detailed. If the district engineer determines that the activity complies with the terms and conditions of the NWP and that the adverse environmental effects are no more than minimal, after considering mitigation, the district engineer will notify the permittee and include any activity-specific conditions in the NWP verification the district engineer deems necessary. Conditions for compensatory mitigation requirements must comply with the appropriate provisions at 33 CFR 332.3(k). The district engineer must approve the final mitigation plan before the permittee commences work in waters of the United States, unless the district engineer determines that prior approval of the final mitigation plan is not practicable or not necessary to ensure timely completion of the required compensatory mitigation. If the prospective permittee elects to submit a compensatory mitigation plan with the PCN, the district engineer will expeditiously review the proposed compensatory mitigation plan. The district engineer must review the proposed compensatory mitigation plan within 45 calendar days of receiving a complete PCN and determine whether the proposed mitigation would ensure that the NWP activity results in no more than minimal adverse environmental effects. If the net adverse environmental effects of the NWP activity (after consideration of the mitigation proposal) are determined by the district engineer to be no more than minimal, the district engineer will provide a timely written response to the applicant. The response will state that the NWP activity can proceed under the terms and conditions of the NWP, including any activity-specific conditions added to the NWP authorization by the district engineer.

4. If the district engineer determines that the adverse environmental effects of the proposed activity are more than minimal, then the district engineer will notify the applicant either: (a) that the activity does not qualify for authorization under the NWP and instruct the applicant on the procedures to seek authorization under an individual permit; (b) that the activity is authorized under the NWP subject to the applicant's submission of a mitigation plan that would reduce the adverse environmental effects so that they are no more than minimal; or (c) that the activity is authorized under the NWP



with specific modifications or conditions. Where the district engineer determines that mitigation is required to ensure no more than minimal adverse environmental effects, the activity will be authorized within the 45-day PCN period (unless additional time is required to comply with general conditions 18, 20, and/or 31), with activity-specific conditions that state the mitigation requirements. The authorization will include the necessary conceptual or detailed mitigation plan or a requirement that the applicant submit a mitigation plan that would reduce the adverse environmental effects so that they are no more than minimal. When compensatory mitigation is required, no work in waters of the United States may occur until the district engineer has approved a specific mitigation plan or has determined that prior approval of a final mitigation plan is not practicable or not necessary to ensure timely completion of the required compensatory mitigation.

## **2021 Further Information**

1. District engineers have authority to determine if an activity complies with the terms and conditions of an NWP.
2. NWPs do not obviate the need to obtain other federal, state, or local permits, approvals, or authorizations required by law.
3. NWPs do not grant any property rights or exclusive privileges.
4. NWPs do not authorize any injury to the property or rights of others.
5. NWPs do not authorize interference with any existing or proposed Federal project (see general condition 31).



# State of Mississippi

TATE REEVES  
Governor

## MISSISSIPPI DEPARTMENT OF ENVIRONMENTAL QUALITY

CHRIS WELLS, EXECUTIVE DIRECTOR

October 12, 2021

Jennifer Mallard  
U.S Army Corps of Engineers,  
Vicksburg District  
4155 Clay Street  
Vicksburg, Mississippi 39183-3435

Re: US Army Corps of Engineers  
Nationwide Permit No. 23  
WQC No. WQC2021049

Pursuant to Section 401 of the Federal Water Pollution Control Act (33 U. S. C. 1251, 1341), the Office of Pollution Control (OPC) issues this Certification, after public notice and opportunity for public hearing, to the U.S. Army Corps of Engineers, an applicant for a Federal License or permit to conduct the following activity:

US Army COE, Nationwide Permits:

Nationwide Permits (NWP) are general permits issued on a nationwide basis to streamline the authorization of activities that have no more than minimal and cumulative adverse effects on the aquatic environment. The U.S. Army Corps of Engineers issues NWPs to authorize certain activities that require Department of the Army permits under Section 404 of the Clean Water Act and/or Section 10 of the Rivers and Harbors Act of 1899.

23. *Approved Categorical Exclusions.* Activities undertaken, assisted, authorized, regulated, funded, or financed, in whole or in part, by another Federal agency or department where:

(a) That agency or department has determined, pursuant to the Council on Environmental Quality's implementing regulations for the National Environmental Policy Act (40 CFR part 1500 et seq.), that the activity is categorically excluded from the requirement to prepare an environmental impact statement or environmental assessment analysis, because it is included within a category of actions which neither individually nor cumulatively have a significant effect on the human environment; and

(b) The Office of the Chief of Engineers (Attn: CECW-CO) has concurred with that agency's or department's determination that the activity is categorically excluded and approved the activity for authorization under NWP 23.

The Office of the Chief of Engineers may require additional conditions, including preconstruction notification, for authorization of an agency's categorical exclusions under this NWP.

Notification: Certain categorical exclusions approved for authorization under this NWP require the permittee to submit a pre-construction notification to the district engineer prior to commencing the activity (see general condition 32). The activities that require pre-construction notification are listed in the appropriate Regulatory Guidance Letter(s). (Authorities: Sections 10 and 404)

**Note:** The agency or department may submit an application for an activity believed to be categorically excluded to the Office of the Chief of Engineers (Attn: CECW-CO). Prior to approval for authorization under this NWP of any agency's activity, the Office of the Chief of Engineers will solicit public comment. As of the date of issuance of this NWP, agencies with approved categorical exclusions are: the Bureau of Reclamation, Federal Highway Administration, and U.S. Coast Guard. Activities approved for authorization under this NWP as of the date of this notice are found in Corps Regulatory Guidance Letter 05-07. Any future approved categorical exclusions will be announced in Regulatory Guidance Letters and posted on this same web site. [NWP No. 23, WQC2021049].

The Office of Pollution Control certifies that the above-described activity will be in compliance with the applicable provisions of Sections 301, 302, 303, 306, and 307 of the Federal Water Pollution Control Act and Section 49-17-29 of the Mississippi Code of 1972, if the applicant complies with the following conditions:

1. The permittee shall obtain appropriate wastewater permits and/or approvals for the proposed activity prior to the commencement of construction activities. (11 Miss. Admin. Code Pt. 6, R. 1.1.1.B) (Statement A)
2. For projects greater than five acres of total ground disturbances including clearing, grading, excavating, or other construction activities, the applicant shall obtain the necessary coverage under the State of Mississippi's Large Construction Storm Water General NPDES Permit. For projects greater than one, to less the five acres of total ground disturbances including clearing, grading, excavating, or other construction activities, the applicant shall follow the conditions and



limitations of the State of Mississippi's Small Construction Storm Water General NPDES Permit. No construction activities shall begin until the necessary approvals and/or permits have been obtained. (11 Miss. Admin. Code Pt. 6, R. 1.1.1.B.) (Statement A & B)

3. Turbidity outside the limits of a 750-foot mixing zone shall not exceed the ambient turbidity by more than 50 Nephelometric Turbidity Units. (11 Miss. Admin. Code Pt. 6, R. 2.2.A.) (Statement C)
4. No sewage, oil, refuse, or other pollutants shall be discharged into the watercourse. (11 Miss. Admin. Code Pt. 6, R. 2.2.A.(3)) (Statement C)

As part of the Scope of Review for Application Decisions, 11 Mississippi Administrative Code Part 6, Rule 1.3.4(B), the above conditions are necessary for the Department to ensure that appropriate measures will be taken to eliminate unreasonable degradation and irreparable harm to waters of the State, such that the activity will not meet the criteria for denial:

(A) Denial of wastewater permits and/or approvals by the State with regard to the proposed activities.

(B) Nonpoint source/storm water management practices necessary to protect water quality have not been proposed.

(C) The proposed activity permanently alters the aquatic ecosystem such that water quality criteria are violated and/or it no longer supports its existing or classified uses. An example is the channelization of streams

The Office of Pollution Control also certifies that there are no limitations under Section 302 nor standards under Sections 306 and 307 of the Federal Water Pollution Control Act which are applicable to the applicant's above-described activity.

This certification is valid for the project as proposed. Any deviations without proper modifications and/or approvals may result in a violation of the 401 Water Quality Certification. If you have any questions, please contact the Department.

Sincerely,



Krystal Rudolph, P.E., BCEE  
Chief, Environmental Permits Division

KR: ld

cc: U.S. Army Corps of Engineers, Mobile District  
U.S. Army Corps of Engineers, Memphis District  
U.S. Army Corps of Engineers, Nashville District  
U.S. Army Corps of Engineers, New Orleans District  
Mississippi Department of Marine Resources  
U.S. Fish and Wildlife Service  
U.S. Environmental Protection Agency, Region 4