



Bridge & Box Bridge Replacement on SR 18 between Claiborne County Line & Hinds County Line, Bridge Nos. 19.2, 19.4, & 23.0, & between Copiah County Line & SR 27, Bridge No. 25.1, known as Federal Aid Project Nos. STP/EXB-0039-01(013) / 103045301 & STP/EXB-0039-02(048) / 102469301 in Copiah & Hinds Counties.

Line No.	Item Code	Adj Code	Quantity	Units	Description [Fixed Unit Price]
<b>Roadway Items</b>					
0010	201-A001		1	Lump Sum	Clearing and Grubbing
0020	201-B001		1	Acre	Clearing and Grubbing
0030	202-A001		1	Lump Sum	Removal of Obstructions
0040	202-B004		54	Square Yard	Removal of Asphalt Driveways, All Depths
0050	202-B008		33,442	Square Yard	Removal of Asphalt Pavement, All Depths, Including Soil Cement Base
0060	202-B017		1	Each	Removal of Box Bridge
0070	202-B018		1	Each	Removal of Box Culvert
0080	202-B023		3	Each	Removal of Bridge
0090	202-B050		176	Linear Feet	Removal of Concrete Combination Curb & Gutter
0100	202-B126		1,162	Linear Feet	Removal of Fence, All Types
0110	202-B150		2,700	Linear Feet	Removal of Guard Rail Including Post, Blockouts & Hardware
0120	202-B191		249	Linear Feet	Removal of Pipe, 8" And Above
0130	202-B206		12	Each	Removal of Right-Of-Way Marker
0140	202-B215		20	Each	Removal of Sign Including Post & Footing
0150	203-EX020	(E)	85,200	Cubic Yard	Borrow Excavation, AH, FME, Class B9
0160	203-G001	(E)	50,100	Cubic Yard	Excess Excavation, FM, AH
0170	206-A001	(S)	511	Cubic Yard	Structure Excavation
0180	206-B001	(E)	45	Cubic Yard	Select Material for Undercuts, Contractor Furnished, FM
0190	209-A005		12,389	Square Yard	Geotextile Stabilization, Type V, Non-Woven
0200	213-C001		48	Ton	Superphosphate
0210	217-A001		4,236	Square Yard	Ditch Liner
0220	220-A001		48	Acre	Insect Pest Control [\$30.00]
0230	221-A001	(S)	4	Cubic Yard	Concrete Paved Ditch
0240	223-A001		444	Acre	Mowing [\$50.00]
0250	225-A001		96	Acre	Grassing
0260	225-B001		48	Ton	Agricultural Limestone
0270	225-C001		189	Ton	Mulch, Vegetative Mulch
0280	226-A001		96	Acre	Temporary Grassing
0290	229-A001		3,400	Square Yard	Erosion Mat
0300	234-A001		6,902	Linear Feet	Temporary Silt Fence
0310	234-C001		5,357	Linear Feet	Super Silt Fence
0320	235-A001		160	Each	Temporary Erosion Checks

Line No.	Item Code	Adj Code	Quantity	Units	Description [Fixed Unit Price]
0330	236-A008		7	Each	Silt Basin, Type D
0340	237-A002		1,021	Linear Feet	Wattles, 20"
0350	245-A001		234	Linear Feet	Silt Dike
0360	246-B001		234	Each	Rockbags
0370	249-A001		190	Ton	Riprap for Erosion Control
0380	304-B005	(GT)	9,900	Ton	Granular Material, Class 5, Group E
0390	307-C004	(M)	13,573	Square Yard	6" Soil-Lime-Water Mixing, Class C
0400	307-D001		185	Ton	Lime
0410	307-S001	(A3)	4,751	Gallon	Bituminous Curing Seal
0420	321-A003		2	Mile	6" In-Grade Preparation
0430	403-A002	(BA1)	6,484	Ton	12.5-mm, MT, Asphalt Pavement
0440	403-A005	(BA1)	5,547	Ton	19-mm, MT, Asphalt Pavement
0450	403-A014	(BA1)	5,725	Ton	9.5-mm, MT, Asphalt Pavement
0460	403-C002	(BA1)	892	Ton	19-mm, MT, Asphalt Pavement, Trench Widening
0470	406-A002		3,200	Square Yard	Cold Milling of Bituminous Pavement, All Depths
0480	407-A001	(A2)	4,435	Gallon	Asphalt for Tack Coat
0490	413-E001		281	Linear Feet	Sawing and Sealing Transverse Joints in Asphalt Pavement
0500	423-A001		5	Mile	Rumble Strips, Ground In
0510	501-E001		281	Linear Feet	Expansion Joints, Without Dowels
0520	502-A001	(C)	606	Square Yard	Reinforced Cement Concrete Bridge End Pavement
0530	503-C010		800	Linear Feet	Saw Cut, Full Depth
0540	601-A001	(S)	328	Cubic Yard	Class "B" Structural Concrete
0550	601-B001	(S)	2	Cubic Yard	Class "B" Structural Concrete, Minor Structures
0560	602-A001	(S)	61,661	Pounds	Reinforcing Steel
0570	603-ALT003	(S)	880	Linear Feet	18" Type A Alternate Pipe
0580	603-ALT004	(S)	96	Linear Feet	18" Type B Alternate Pipe
0590	603-ALT006	(S)	88	Linear Feet	24" Type A Alternate Pipe
0600	603-ALT009	(S)	48	Linear Feet	30" Type A Alternate Pipe
0610	603-ALT013	(S)	56	Linear Feet	36" x 23" Type A Alternate Pipe
0620	603-CA026	(S)	96	Linear Feet	24" Reinforced Concrete Pipe, Class III
0630	603-CA055	(S)	64	Linear Feet	36" Reinforced Concrete Pipe, Class III
0640	603-CA065	(S)	104	Linear Feet	36" Reinforced Concrete Pipe, Class V, Jacked or Bored
0650	603-CB004	(S)	2	Each	24" Reinforced Concrete End Section
0660	603-CB006	(S)	4	Each	36" Reinforced Concrete End Section

Line No.	Item Code	Adj Code	Quantity	Units	Description [Fixed Unit Price]
0670	603-CE008	(S)	88	Linear Feet	29" x 18" Concrete Arch Pipe, Class A III
0680	603-CE018	(S)	104	Linear Feet	44" x 27" Concrete Arch Pipe, Class A III
0690	603-CF003	(S)	2	Each	29" x 18" Concrete Arch Pipe End Section
0700	603-CF005	(S)	2	Each	44" x 27" Concrete Arch Pipe End Section
0710	605-AA001	(S)	156	Square Yard	Geotextile for Subsurface Drainage, Type III
0720	605-O002	(S)	281	Linear Feet	4" Perforated Sewer Pipe for Underdrains, SDR 23.5
0730	605-P002	(S)	30	Linear Feet	4" Non-perforated Sewer Pipe for Underdrains, SDR 23.5
0740	605-W001	(GY)	10	Cubic Yard	Filter Material for Combination Storm Drain and/or Underdrains, Type A, FM
0750	606-B002		1,138	Linear Feet	Guard Rail, Class A, Type 1, 'W' Beam
0770	606-D022		11	Each	Guard Rail, Bridge End Section, Type I
0780	606-E001		11	Each	Guard Rail, Terminal End Section
0790	615-A001	(S)	120	Linear Feet	Concrete Bridge End Barrier, 32"
0800	617-A001		96	Each	Right-of-Way Marker
0810	618-A001		1	Lump Sum	Maintenance of Traffic
0820	618-C001		1	Lump Sum	Construction and Removal of Detour Bridge
0830	618-E001		1,624	Linear Feet	Detour Bridge Piling
0840	618-F001		1	Lump Sum	Detour Bridge PDA Test Pile
0850	619-A1003		33,876	Linear Feet	Temporary Traffic Stripe, Continuous White, Paint
0860	619-A1007		5,140	Linear Feet	Temporary Traffic Stripe, Continuous White, Type 1 or 2 Tape
0870	619-A2003		3,046	Linear Feet	Temporary Traffic Stripe, Continuous Yellow, Paint
0880	619-A3004		1,716	Linear Feet	Temporary Traffic Stripe, Skip White, Paint
0890	619-A4003		16,173	Linear Feet	Temporary Traffic Stripe, Skip Yellow, Paint
0900	619-A4007		3,335	Linear Feet	Temporary Traffic Stripe, Skip Yellow, Type 1 or 2 Tape
0910	619-A5002		620	Linear Feet	Temporary Traffic Stripe, Detail, Paint
0920	619-C7001		502	Each	Two-Way Yellow Reflective High Performance Raised Marker
0930	619-D1001		470	Square Feet	Standard Roadside Construction Signs, Less than 10 Square Feet
0940	619-D2001		1,322	Square Feet	Standard Roadside Construction Signs, 10 Square Feet or More
0950	619-G4001		432	Linear Feet	Barricades, Type III, Double Faced
0960	619-G4005		476	Linear Feet	Barricades, Type III, Single Faced
0970	619-G5001		217	Each	Free Standing Plastic Drums
0980	619-G7001		13	Each	Warning Lights, Type "B"
0990	619-K1001		100	Linear Feet	Installation and Removal of Guard Rail, Type I, Class A
1000	619-K4001		4	Each	Installation and Removal of Guardrail, Terminal End Section

Line No.	Item Code	Adj Code	Quantity	Units	Description [Fixed Unit Price]
1010	620-A001		1	Lump Sum	Mobilization
1020	622-A004		1	Each	Engineer's Field Office Building, Type 3
1030	626-C001		26,040	Linear Feet	6" Thermoplastic Double Drop Edge Stripe, Continuous White
1040	626-D002		12,453	Linear Feet	6" Thermoplastic Double Drop Traffic Stripe, Skip Yellow
1050	626-E002		2,520	Linear Feet	6" Thermoplastic Double Drop Traffic Stripe, Continuous Yellow
1060	626-G004		2,288	Linear Feet	Thermoplastic Double Drop Detail Stripe, White
1070	626-G005		357	Linear Feet	Thermoplastic Double Drop Detail Stripe, Yellow
1080	626-H002		593	Linear Feet	Thermoplastic Double Drop Legend, White
1090	627-J001		153	Each	Two-Way Clear Reflective High Performance Raised Markers
1100	627-L001		376	Each	Two-Way Yellow Reflective High Performance Raised Markers
1105	629-A003		1	Each	Vehicular Impact Attenuator, 55 MPH
1110	630-A001		43	Square Feet	Standard Roadside Signs, Sheet Aluminum, 0.080" Thickness
1120	630-A003		174	Square Feet	Standard Roadside Signs, Sheet Aluminum, 0.125" Thickness
1130	630-C003		171	Linear Feet	Steel U-Section Posts, 3.0 lb/ft
1140	630-E004		262	Pounds	Structural Steel Angles & Bars, 7/16" x 2 1/2" Flat Bar
1150	630-F006		55	Each	Delineators, Guard Rail, White
1160	630-G003		6	Each	Type 3 Object Markers, OM-3L, Post Mounted
1170	630-G007		6	Each	Type 3 Object Markers, OM-3R, Post Mounted
1180	630-K003		210	Linear Feet	Welded & Seamless Steel Pipe Posts, 4"
1190	699-A001		1	Lump Sum	Roadway Construction Stakes
1200	907-630-O004		4	Each	Remove and Reset Sign, All Sizes
1210	907-906001		720	Hours	Trainees [\$5.00]
<b>ALTERNATE GROUP AA NUMBER 1</b>					
1220	304-F001	(GT)	15,405	Ton	3/4" and Down Crushed Stone Base
<b>ALTERNATE GROUP AA NUMBER 2</b>					
1230	304-F002	(GT)	15,405	Ton	Size 610 Crushed Stone Base
<b>ALTERNATE GROUP AA NUMBER 3</b>					
1240	304-F003	(GT)	15,405	Ton	Size 825B Crushed Stone Base
<b>ALTERNATE GROUP BB NUMBER 1</b>					
1250	308-A001		158	Ton	Cement
1260	308-B002	(M)	13,573	Square Yard	Soil-Cement-Water Mixing, Optional Mixers, Base
1270	308-S001	(A3)	4,751	Gallon	Bituminous Curing Seal
<b>ALTERNATE GROUP BB NUMBER 2</b>					
1280	311-A003	(M)	13,573	Square Yard	6" Processing Lime and Fly Ash Treated Course

Line No.	Item Code	Adj Code	Quantity	Units	Description [Fixed Unit Price]
1290	311-B001		94	Ton	Lime
1300	311-C002		2,478	Ton	Fly Ash, Class C or F
1310	311-S001	(A3)	4,751	Gallon	Bituminous Curing Seal
<b>ALTERNATE GROUP CC NUMBER 1</b>					
1320	605-W002	(GY)	177	Cubic Yard	Filter Material for Combination Storm Drain and/or Underdrains, Type B, FM
<b>ALTERNATE GROUP CC NUMBER 2</b>					
1330	605-W003	(GY)	177	Cubic Yard	Filter Material for Combination Storm Drain and/or Underdrains, Type C, FM
<b>ALTERNATE GROUP DD NUMBER 1</b>					
1340	907-624-B002		5,141	Linear Feet	6" Inverted Profile Thermoplastic Traffic Stripe, Continuous White
1350	907-624-C001		2,587	Linear Feet	6" Inverted Profile Thermoplastic Traffic Stripe, Skip Yellow
<b>ALTERNATE GROUP DD NUMBER 2</b>					
1360	628-B001		5,141	Linear Feet	6" Cold Plastic Traffic Stripe, Continuous White
1370	628-C002		2,587	Linear Feet	6" Cold Plastic Traffic Stripe, Skip Yellow
<b>Bridge Items</b>					
1380	501-K001		11,422	Square Yard	Transverse Grooving
1390	803-B001		6	Each	Conventional Static Pile Load Test [\$5,000.00]
1400	803-D002	(S)	2,165	Linear Feet	HP 12 x 53 Steel Piling
1410	803-D006	(S)	3,740	Linear Feet	HP 14 x 73 Steel Piling
1420	803-D007	(S)	11,885	Linear Feet	HP 14 x 89 Steel Piling
1430	803-I003	(S)	11	Each	PDA Test Pile, HP Steel Pile
1440	803-I004	(S)	4	Each	PDA Test Pile, Steel Pipe Pile
1450	803-J001	(S)	7	Each	Pile Restrike
1460	804-A001	(S)	999	Cubic Yard	Bridge Concrete, Class AA
1470	804-A004	(S)	3,296	Cubic Yard	Bridge Concrete, Class BD
1480	804-C002	(S)	6,583	Linear Feet	100' Prestressed Concrete Beam, Type IV
1490	804-C059	(S)	839	Linear Feet	140' Prestressed Concrete Beam, Type BT-72
1500	804-C065	(S)	477	Linear Feet	40' Prestressed Concrete Beam, Type I+2
1510	804-C121	(S)	3,811	Linear Feet	80' Prestressed Concrete Beam, Type III
1520	805-A001	(S)	850,557	Pounds	Reinforcement
1530	810-A007	(S)	1,193,402	Pounds	Structural Steel, A 709, Grade 50W
1540	810-A008	(S)	210,550	Pounds	Structural Steel, A 709, Grade HPS 70W
1550	811-D001	(S)	20	Each	Disc Bearing Device
1560	813-A002	(S)	5,150	Linear Feet	Concrete Railing, 32"
1570	815-A007	(S)	6,092	Ton	Loose Riprap, Size 300

<b>Line No.</b>	<b>Item Code</b>	<b>Adj Code</b>	<b>Quantity</b>	<b>Units</b>	<b>Description [Fixed Unit Price]</b>
1580	815-E001	(S)	6,766	Square Yard	Geotextile under Riprap
1590	822-A012		93	Linear Feet	4" Neoprene Expansion Joint
1600	907-803-PP004		2,515	Linear Feet	30" Steel Pipe Piling, Wall Thickness 0.750"

# ADDENDUM

STATE	PROJECT NO.
MISS.	STP/EXB-0039-01(013) STP/EXB-0039-02(048)

DESCRIPTION OF SHEET	WKG. NO.	SH. NO.	DESCRIPTION OF SHEET	WKG. NO.	SH. NO.
TITLE SHEET (1)		1	PHASE 1 - TRAFFIC CONTROL TYPICAL SECTION	TCTS1-2	54
DETAILED INDEX AND GENERAL NOTES (4)			PHASE 1 - TRAFFIC CONTROL PLANS - SITE 1	TC1-1	55
DETAILED INDEX	DI-1	2	PHASE 1 - TRAFFIC CONTROL PLANS - SITE 2	TC1-2	56
DETAILED INDEX	DI-2	3	PHASE 1 - TRAFFIC CONTROL PLANS - SITE 3	TC1-3	57
GENERAL NOTES	GN-1	4	PHASE 1 - TRAFFIC CONTROL PLANS - SITE 4	TC1-4	58
GENERAL NOTES	GN-2	5	PHASE 1 - TRAFFIC CONTROL PLANS - SITE 4	TC1-5	59
TYPICAL SECTION SHEETS (7)			PHASE 2 - TRAFFIC CONTROL TYPICAL SECTION	TCTS2-1	60
WIDEN AND OVERLAY - SITES 1 & 4	TS-1	6	PHASE 2 - TRAFFIC CONTROL PLANS - SITE 1	TC2-1	61
MAINLINE TRANSITIONS - SITES 1 & 4	TS-2	7	PHASE 2 - TRAFFIC CONTROL PLANS - SITE 2	TC2-2	62
NEW CONSTRUCTION AND REMOVAL OF EXISTING EMBANKMENT - SITES 1 & 4	TS-3	8	PHASE 2 - TRAFFIC CONTROL PLANS - SITE 3	TC2-3	63
WIDEN AND OVERLAY - SITES 2 & 3	TS-4	9	PHASE 2 - TRAFFIC CONTROL PLANS - SITE 4	TC2-4	64
NEW CONSTRUCTION - SITE 3	TS-5	10	PHASE 2 - TRAFFIC CONTROL PLANS - SITE 4	TC2-5	65
CONSTRUCTION AND REMOVAL OF DETOUR ROAD - SITES 2 & 3	TS-6	11	PHASE 3 - TRAFFIC CONTROL TYPICAL SECTION	TCTS3-1	66
LOCAL ROAD - SITE 4	TS-7	12	PHASE 3 - TRAFFIC CONTROL PLANS - SITE 2	TC3-1	67
QUANTITY SHEETS (16)			PHASE 3 - TRAFFIC CONTROL PLANS - SITE 3	TC3-2	68
SUMMARY OF QUANTITIES	SQ-1	13	CONSTRUCTION SIGNING PLANS (6)		
SUMMARY OF QUANTITIES	SQ-2	14	CONSTRUCTION SIGNING - SITE 1 B.O.P. TO STA. 563+00.000	CS-1	69
SUMMARY OF QUANTITIES	SQ-3	15	CONSTRUCTION SIGNING - SITE 1 STA. 563+00.000 TO STA. 592+40.000	CS-2	70
SUMMARY OF QUANTITIES	SQ-4	16	CONSTRUCTION SIGNING - SITE 2	CS-3	71
SUMMARY OF QUANTITIES	SQ-5	17	CONSTRUCTION SIGNING - SITE 3	CS-4	72
SUMMARY OF QUANTITIES	SQ-6	18	CONSTRUCTION SIGNING - SITE 4 B.O.P. TO STA. 50+00.000	CS-5	73
SUMMARY OF QUANTITIES	SQ-7	19	CONSTRUCTION SIGNING - SITE 4 STA. 50+00.000 TO E.O.P.	CS-6	74
SUMMARY OF QUANTITIES	SQ-8	20	PAVEMENT MARKINGS DETAIL SHEETS (8)		
SUMMARY OF QUANTITIES	SQ-9	21	PAVEMENT MARKINGS - SITE 1 B.O.P. TO STA. 557+00.000	PMD-1	75
SUMMARY OF QUANTITIES	SQ-10	22	PAVEMENT MARKINGS - SITE 1 STA. 557+00.000 TO STA. 581+00.000	PMD-2	76
SUMMARY OF QUANTITIES	SQ-11	23	PAVEMENT MARKINGS - SITE 1 STA. 581+00.000 TO STA. 592+40.000	PMD-3	77
SUMMARY OF QUANTITIES	SQ-12	24	PAVEMENT MARKINGS - SITE 2 STA. 280+00.000 TO STA. 302+64.513	PMD-4	78
STANDARD ROADSIDE SIGN QUANTITIES	SRS-1	25	PAVEMENT MARKINGS - SITE 3 STA. 315+60.950 TO STA. 333+67.800	PMD-5	79
ESTIMATED QUANTITIES - REMOVAL ITEMS, BRIDGE END PAVEMENT	EQ-1	26	PAVEMENT MARKINGS - SITE 4 STA. 25+00.000 TO STA. 48+86.000	PMD-6	80
ESTIMATED QUANTITIES - EARTHWORK	EQ-2	27	PAVEMENT MARKINGS - SITE 4 STA. 48+86.000 TO E.O.P.	PMD-7	81
ESTIMATED QUANTITIES - EARTHWORK CONT'D	EQ-3	28	PAVEMENT MARKINGS - TRAXLER ROAD - SITE 4 STA. 8+20.000 TO STA. 16+00.000	PMD-8	82
ESTIMATED QUANTITIES - PAVEMENT MARKINGS, EROSION CONTROL ITEMS	EQ-4	29	EROSION CONTROL PLAN (9)		
ESTIMATED QUANTITIES - GUARD RAIL	EQ-5	30	SITE 1 - B.O.P. TO STA. 563+00.000	ECP-3	83
ESTIMATED QUANTITIES - DRIVEWAYS	EQ-6	31	SITE 1 - STA. 563+00.000 TO STA. 592+40.000	ECP-4	84
ESTIMATED QUANTITIES - DRIVEWAYS CONT'D	EQ-7	32	SITE 2 - MAINLINE	ECP-5	85
ESTIMATED QUANTITIES - SIDE DRAINS	EQ-8	33	SITE 2 - DETOUR	ECP-6	86
ESTIMATED QUANTITIES - BOX CULVERTS, BOX BRIDGES, DRAINAGE STRUCTURES	EQ-9	34	SITE 3 - MAINLINE	ECP-7	87
SUMMARY OF TRAFFIC CONTROL ITEMS	EQ-10	35	SITE 3 - DETOUR	ECP-8	88
ESTIMATED QUANTITIES FOR TRAFFIC CONTROL SIGNS - COPIAH TOTAL	EQ-11	36	SITE 4 - STA. 25+00.000 TO STA. 54+00.000	ECP-9	89
ESTIMATED QUANTITIES FOR TRAFFIC CONTROL SIGNS - HINDS TOTAL	EQ-12	37	SITE 4 - STA. 51+00.000 TO E.O.P.	ECP-10	90
PLAN AND PROFILE SHEETS (9)			SITE 4 - LOCAL TRAXLER ROAD	ECP-10A	91
SITE 1: B.O.P. TO STA. 563+00.000	3	38	SPECIAL DESIGN SHEETS (58)		
SITE 1: STA. 563+00.000 TO STA. 592+40.000	4	39	VEGETATION SCHEDULE	VS-1	92
SITE 2 MAINLINE	5	40	RIGHT-OF-WAY MARKERS - SITE 1	RWC-1	93
SITE 2 DETOUR	6	41	RIGHT-OF-WAY MARKERS - SITE 2	RWC-2	94
SITE 3 MAINLINE	7	42	RIGHT-OF-WAY MARKERS - SITE 3	RWC-3	95
SITE 3 DETOUR	8	43	RIGHT-OF-WAY MARKERS - SITE 4	RWC-4	96
SITE 4: STA. 25+00.000 TO STA. 54+00.000	9	44	BRIDGE END PAVEMENT (WITH RAIL, OVERLAY, AND SLEEPER SLAB)	BEPR-SS	97
SITE 4: STA. 51+00.000 - EOP	10	45	33.5" BRIDGE END PAVEMENT RAIL	BEPR-1B	98
SITE 4: LOCAL ROAD TRAXLER	10A	46	MISCELLANEOUS TYPICAL SECTION DETAILS	MTSD	99
INTERSECTION DETAIL SHEET (1)			TYPICAL TEMPORARY EROSION/SEDIMENT CONTROL APPLICATIONS	ECD-1	100
SITES 1, 3, AND 4	ID-1	47			
FORM GRADE SHEETS (5)					
FORM GRADE - SITE 1 MYLES STATION ROAD	FG-1	48			
FORM GRADE - SITE 1 REALIGNMENT TIE-IN	FG-2	49			
FORM GRADE - SITE 3 BISHOP DRIVE	FG-3	50			
FORM GRADE - SITE 4 CHAPMAN ROAD	FG-4	51			
FORM GRADE - SITE 4 TRAXLER ROAD	FG-5	52			
TRAFFIC CONTROL PLAN (16)					
PHASE 1 - TRAFFIC CONTROL TYPICAL SECTION	TCTS1-1	53			

9/21/2017 11:29 AM DI.DGN



**ROADWAY DESIGN**

PS & E PLANS-03/10/2017		
FMS CON. *103045/301000 102469/301000		
REVISIONS		
DATE	SHEET NO.	BY
6/21/17	13-24,26,97	MJW
8/18/17	13-24	MJW
9/21/17	13-24,30,42	MJW

MISSISSIPPI DEPARTMENT OF TRANSPORTATION	
<b>DETAILED INDEX</b>	
PROJECT NO. STP/EXB-0039-01(013)02(048) COUNTY : COPIAH/HINDS	
WORKING NUMBER	DI-1
SHEET NUMBER	2
FILENAME: DI.DGN	
DESIGN TEAM	PICKERING CHECKED MJW DATE 03/10/17






**ADDENDUM**

STATE	PROJECT NO.
MISS	STP/EXB-0039-01(013)/STP/EXB-0039-02(048)

SUMMARY OF QUANTITIES (SHEET 1)				
PAY ITEM NO.	PAY ITEM	UNIT	HINDS : 102469-301000	
			Prelim	Final
201-A001	Clearing and Grubbing	LS	1	
201-B001	Clearing and Grubbing	ACRE	1	
202-A001	Removal of Obstructions	LS	1	②
202-B008	Removal of Asphalt Pavement, All Depths, Including Soil Cement Base	SY	11,667	
202-B023	Removal of Bridge	EA	1	④
202-B050	Removal of Concrete Combination Curb & Gutter	LF	176	
202-B126	Removal of Fence, All Types	LF	486	
202-B150	Removal of Guard Rail Including Post, Blockouts & Hardware	LF	450	⑤
202-B191	Removal of Pipe, 8" And Above	LF	195	
202-B206	Removal of Right-Of-Way Marker	EA	6	
202-B215	Removal of Sign Including Post & Footing	EA	2	
203-EX020	Borrow Excavation, AH, FME, Class B9	CY	54,950	③
203-G001	Excess Excavation, FM, AH	CY	17,600	③
206-A001	Structure Excavation	CY	28	
209-A005	Geotextile Stabilization, Type V, Non-Woven	SY	3,158	
213-C001	Superphosphate	TON	18	
217-A001	Ditch Liner	SY	1,312	
220-A001	Insect Pest Control	ACRE	18	
221-A001	Concrete Paved Ditch	CY	1	①
223-A001	Mowing	ACRE	204	
225-A001	Grassing	ACRE	36	
225-B001	Agricultural Limestone	TON	18	
225-C001	Mulch, Vegetative Mulch	TON	70	
226-A001	Temporary Grassing	ACRE	36	
229-A001	Erosion Mat	SY	1,200	
234-A001	Temporary Silt Fence	LF	2,171	①
234-C001	Super Silt Fence	LF	2,716	
235-A001	Temporary Erosion Checks	EA	42	
236-A008	Silt Basin, Type D	EA	4	
237-A002	Wattles, 20"	LF	60	
245-A001	Silt Dike	LF	60	
246-B001	Rockbags	EA	60	
249-A001	Riprap for Erosion Control	TON	49	
304-B005	Granular Material, Class 5, Group E	TON	4,700	②
	ALTERNATIVE ITEMS-CRUSHED STONE			
304-F001	3/4" and Down Crushed Stone Base	TON	4,559	
	OR			
304-F002	Size 610 Crushed Stone Base	TON	4,559	
	OR			
304-F003	Size 825B Crushed Stone Base	TON	4,559	
307-C004	6" Soil-Lime-Water Mixing, Class C	SY	5,511	
307-D001	Lime	TON	75	

- ① INCLUDES 60 LF FOR DITCH CHECKS AND 2,111 LF FOR ROADWAYS
- ② ROUNDED TO NEAREST 50 WHEN INCREASED BY 20% FOR SHRINKAGE. HINDS COUNTY: INCLUDES 3,750 TON FOR ROADWAYS AND 950 TON FOR DRIVEWAYS
- ③ ROUNDED TO NEAREST 50 WHEN INCREASED BY 25 PERCENT
- ④ BRIDGE NO. 25.1 AT STA 46+77 SPANS:  
1@34.5',2@35.25',2@53.25',1@81.25',  
1@81.75',1@120.83',1@34.5'
- ⑤ 450' GUARD RAIL REMOVAL @ BRIDGE NO. 25.1


BRIDGE END QUANTITIES	MW	ADDITION AND CHANGES TO QUANTITIES	MW	By	Revision	<b>MISSISSIPPI DEPARTMENT OF TRANSPORTATION</b> <b>SUMMARY OF QUANTITIES</b>	
	06/21/2017		08/18/2017				
Proj No: STP/EXB-0039-02(048) County: HINDS FILENAME : SQS.dgn Design Team Pickering						Working Number SQ-1	Sheet Number 13
Checked MJW Date 3/10/17							

**ADDENDUM**

STATE	PROJECT NO.
MISS	STP/EXB-0039-01(013)/STP/EXB-0039-02(048)

SUMMARY OF QUANTITIES (SHEET 2)				
PAY ITEM NO.	PAY ITEM	UNIT	HINDS : 102469-301000	
			Prelim	Final
307-S001	Bituminous Curing Seal	GAL	1,929	
	ALTERNATIVE ITEMS-SOIL TREATMENT			
308-A001	Cement	TON	64	① ②
308-B002	Soil-Cement-Water Mixing, Optional Mixers, Base	SY	5,511	
308-S001	Bituminous Curing Seal	GAL	1,929	
	OR			
311-A003	6" Processing Lime and Fly Ash Treated Course	SY	5,511	① ②
311-B001	Lime	TON	38	
311-C002	Fly Ash, Class C or F	TON	2,200	
311-S001	Bituminous Curing Seal	GAL	1,929	
321-A003	6" In-Grade Preparation	MI	1	⑥
403-A002	12.5-mm, MT, Asphalt Pavement	TON	1,451	②
403-A005	19-mm, MT, Asphalt Pavement	TON	1,561	
403-A014	9.5-mm, MT, Asphalt Pavement	TON	2,861	①
403-C002	19-mm, MT, Asphalt Pavement, Trench Widening	TON	30	②
406-A002	Cold Milling of Bituminous Pavement, All Depths	SY	800	
407-A001	Asphalt for Tack Coat	GAL	701	
413-E001	Sawing and Sealing Transverse Joints in Asphalt Pavement	LF	94	
423-A001	Rumble Strips, Ground In	MI	2	
501-E001	Expansion Joints, Without Dowels	LF	94	
502-A001	Reinforced Cement Concrete Bridge End Pavement	SY	202	
601-B001	Class "B" Structural Concrete, Minor Structures	CY	1	⑤
603-ALT003	18" Type A Alternate Pipe	LF	352	③
603-ALT009	30" Type A Alternate Pipe	LF	48	③
603-ALT013	36" x 23" Type A Alternate Pipe	LF	56	③
603-CA026	24" Reinforced Concrete Pipe, Class III	LF	96	
603-CA055	36" Reinforced Concrete Pipe, Class III	LF	64	
603-CA065	36" Reinforced Concrete Pipe, Class V, Jacked or Bored	LF	104	
603-CB004	24" Reinforced Concrete End Section	EA	2	
603-CB006	36" Reinforced Concrete End Section	EA	4	
605-AA001	Geotextile for Subsurface Drainage, Type III	SY	52	①
605-O002	4" Perforated Sewer Pipe for Underdrains, SDR 23.5	LF	94	①
605-P002	4" Non-perforated Sewer Pipe for Underdrains, SDR 23.5	LF	10	①
605-W001	Filter Material for Combination Storm Drain and/or Underdrains, Type A, FM	CY	3	①
	ALTERNATIVE ITEMS-FILTER MATERIAL			
605-W002	Filter Material for Combination Storm Drain and/or Underdrains, Type B, FM	CY	59	①
	OR			
605-W003	Filter Material for Combination Storm Drain and/or Underdrains, Type C, FM	CY	59	①
606-B002	Guard Rail, Class A, Type 1, 'W' Beam	LF	425	④
606-D022	Guard Rail, Bridge End Section, Type I	EA	4	

- ① INCLUDES 1,418 TONS FOR ROADWAYS AND 33 TONS FOR DRIVEWAYS
- ② INCLUDES 1,517 TONS FOR ROADWAYS AND 43 TONS FOR DRIVEWAYS
- ③ TYPE A OR B ALTERNATE REINFORCED CONCRETE PIPE CLASS III OR CORRUGATED POLYETHYLENE PIPE OR POLY VINYL CHLORIDE PIPE
- ④ LENGTH OF GUARD RAIL BASED ON A TERMINAL SECTION OF 37.5 FEET. FOR ANY OTHER LENGTH TERMINAL, THE LENGTH OF NORMAL GUARDRAIL WILL BE ADJUSTED.
- ⑤ 1 CUBIC YARD FOR SIGN POSTS
- ⑥ SITE 4 LIMITS: STA 32+14 TO STA 32+50  
SITE 4 LIMITS: STA 60+50 TO STA 63+96


BRIDGE END QUANTITIES	MW	ADDITION AND CHANGES TO QUANTITIES	By	Date	Revision		<b>MISSISSIPPI DEPARTMENT OF TRANSPORTATION</b> <b>SUMMARY OF QUANTITIES</b>
	MW						
06/21/2017		08/18/2017					Proj No: STP/EXB-0039-02(048) County: HINDS FILENAME : SQS.dgn Design Team Pickering      Checked MJW Date 3/10/17
							Working Number SQ-2 Sheet Number 14

**ADDENDUM**

STATE	PROJECT NO.
MISS	STP/EXB-0039-01(013)/STP/EXB-0039-02(048)

**SUMMARY OF QUANTITIES (SHEET 3)**

PAY ITEM NO.	PAY ITEM	UNIT	HINDS : 102469-301000	
			Prelim	Final
606-E001	Guard Rail, Terminal End Section	EA	4	
615-A001	Concrete Bridge End Barrier, 32"	LF	40	
617-A001	Right-of-Way Marker	EA	30	
618-A001	Maintenance of Traffic	LS	1	
619-A1003	Temporary Traffic Stripe, Continuous White, Paint	LF	9,932	
619-A1007	Temporary Traffic Stripe, Continuous White, Type 1 or 2 Tape	LF	1,400	
619-A2003	Temporary Traffic Stripe, Continuous Yellow, Paint	LF	1,806	
619-A3004	Temporary Traffic Stripe, Skip White, Paint	LF	531	
619-A4003	Temporary Traffic Stripe, Skip Yellow, Paint	LF	4,200	
619-A4007	Temporary Traffic Stripe, Skip Yellow, Type 1 or 2 Tape	LF	700	
619-A5002	Temporary Traffic Stripe, Detail, Paint	LF	252	
619-C7001	Two-Way Yellow Reflective High Performance Raised Marker	EA	123	
619-D1001	Standard Roadside Construction Signs, Less than 10 Square Feet	SF	187	
619-D2001	Standard Roadside Construction Signs, 10 Square Feet or More	SF	414	
619-G4001	Barricades, Type III, Double Faced	LF	360	
619-G4005	Barricades, Type III, Single Faced	LF	24	
619-G5001	Free Standing Plastic Drums	EA	83	
619-G7001	Warning Lights, Type "B"	EA	3	
620-A001	Mobilization	LS	1	
	ALTERNATIVE ITEMS-BRIDGE STRIPE			
907-624-B002	6" Inverted Profile Thermoplastic Traffic Stripe, Continuous White	LF	1,400	
907-624-C001	6" Inverted Profile Thermoplastic Traffic Stripe, Skip Yellow	LF	700	
	OR			
628-B001	6" Cold Plastic Traffic Stripe, Continuous White	LF	1,400	
628-C002	6" Cold Plastic Traffic Stripe, Skip Yellow	LF	700	
626-C001	6" Thermoplastic Double Drop Edge Stripe, Continuous White	LF	9,982	
626-D002	6" Thermoplastic Double Drop Traffic Stripe, Skip Yellow	LF	4,291	
626-E002	6" Thermoplastic Double Drop Traffic Stripe, Continuous Yellow	LF	1,520	
626-G004	Thermoplastic Double Drop Detail Stripe, White	LF	1,026	
626-G005	Thermoplastic Double Drop Detail Stripe, Yellow	LF	118	
626-H002	Thermoplastic Double Drop Legend, White	LF	277	
627-J001	Two-Way Clear Reflective High Performance Raised Markers	EA	67	
627-L001	Two-Way Yellow Reflective High Performance Raised Markers	EA	125	
630-A001	Standard Roadside Signs, Sheet Aluminum, 0.080" Thickness	SF	20	
630-A003	Standard Roadside Signs, Sheet Aluminum, 0.125" Thickness	SF	102	
630-C003	Steel U-Section Posts, 3.0 lb/ft	LF	115	
630-E004	Structural Steel Angles & Bars, 7/16" x 2 1/2" Flat Bar	LBS	131	
630-F006	Delineators, Guard Rail, White	EA	18	
630-G003	Type 3 Object Markers, OM-3L, Post Mounted	EA	2	
630-G007	Type 3 Object Markers, OM-3R, Post Mounted	EA	2	
630-K003	Welded & Seamless Steel Pipe Posts, 4"	LF	105	


By	<b>MISSISSIPPI DEPARTMENT OF TRANSPORTATION</b>	
	<b>SUMMARY OF QUANTITIES</b>	
Revision		
Date	FILENAME : SQS.dgn Design Team Pickering	Working Number SQ-3
	Checked MJW Date 3/10/12	Sheet Number 15

**ADDENDUM**

STATE	PROJECT NO.
MISS	STP/EXB-0039-01(013)/STP/EXB-0039-02(048)

**SUMMARY OF QUANTITIES (SHEET 4)**

PAY ITEM NO.	PAY ITEM	UNIT	HINDS : 102469-301000	
			Prelim	Final
907-630-O004	Remove and Reset Sign, All Sizes	EA	4	
699-A001	Roadway Construction Stakes	LS	1	

<b>MISSISSIPPI DEPARTMENT OF TRANSPORTATION</b>		
<b>SUMMARY OF QUANTITIES</b>		
By	Proj No: STP/EXB-0039-02(048)	
Revision	County: HINDS	
Date	FILENAME : SQS.dgn	Working Number
	Design Team Pickering	SQ-4
	Checked MJW Date 3/10/17	Sheet Number
		16

**ADDENDUM**

STATE	PROJECT NO.
MISS	STP/EXB-0039-01(013)/STP/EXB-0039-02(048)

**SUMMARY OF QUANTITIES (SHEET 5)**

PAY ITEM NO.	PAY ITEM	UNIT	COPIAH : 103045-301000	
			Prelim	Final
201-A001	Clearing and Grubbing	LS	1	
202-A001	Removal of Obstructions	LS	1	
202-B004	Removal of Asphalt Driveways, All Depths	SY	54	
202-B008	Removal of Asphalt Pavement, All Depths, Including Soil Cement Base	SY	21,775	
202-B017	Removal of Box Bridge	EA	1	
202-B018	Removal of Box Culvert	EA	1	
202-B023	Removal of Bridge	EA	2	
202-B126	Removal of Fence, All Types	LF	676	
202-B150	Removal of Guard Rail Including Post, Blockouts & Hardware	LF	2,250	
202-B191	Removal of Pipe, 8" And Above	LF	54	
202-B206	Removal of Right-Of-Way Marker	EA	6	
202-B215	Removal of Sign Including Post & Footing	EA	18	
203-EX020	Borrow Excavation, AH, FME, Class B9	CY	30,250	
203-G001	Excess Excavation, FM, AH	CY	32,500	
206-A001	Structure Excavation	CY	483	
206-B001	Select Material for Undercuts, Contractor Furnished, FM	CY	45	
209-A005	Geotextile Stabilization, Type V, Non-Woven	SY	9,231	
213-C001	Superphosphate	TON	30	
217-A001	Ditch Liner	SY	2,924	
220-A001	Insect Pest Control	ACRE	30	
221-A001	Concrete Paved Ditch	CY	3	
223-A001	Mowing	ACRE	240	
225-A001	Grassing	ACRE	60	
225-B001	Agricultural Limestone	TON	30	
225-C001	Mulch, Vegetative Mulch	TON	119	
226-A001	Temporary Grassing	ACRE	60	
229-A001	Erosion Mat	SY	2,200	
234-A001	Temporary Silt Fence	LF	4,731	
234-C001	Super Silt Fence	LF	2,641	
235-A001	Temporary Erosion Checks	EA	118	
236-A008	Silt Basin, Type D	EA	3	
237-A002	Wattles, 20"	LF	961	
245-A001	Silt Dike	LF	174	
246-B001	Rockbags	EA	174	
249-A001	Riprap for Erosion Control	TON	141	
304-B005	Granular Material, Class 5, Group E	TON	5,200	
	ALTERNATIVE ITEMS-CRUSHED STONE			
304-F001	3/4" and Down Crushed Stone Base	TON	10,846	
	OR			
304-F002	Size 610 Crushed Stone Base	TON	10,846	
	OR			
304-F003	Size 825B Crushed Stone Base	TON	10,846	

②

⑤

⑤

④

⑥

③

③


①

①

②

- ① INCLUDES 174 LF FOR DITCH CHECKS AND 3,770 LF FOR ROADWAYS
- ② ROUNDED TO NEAREST 50 WHEN INCREASED BY 20% FOR SHRINKAGE.  
INCLUDES 4,200 TON FOR ROADWAYS AND 1,000 TON FOR DRIVEWAYS
- ③ ROUNDED TO NEAREST 50 WHEN INCREASED BY 25 PERCENT
- ④ BRIDGE NO. 19.2 AT STA 566+88  
SPANS: 1@57.25', 1@60', 1@180', 1@60', 1@40', 1@20'  
BRIDGE NO. 19.4 AT STA 578+30  
SPANS: 14@20'
- ⑤ BOX CULVERT AT STA 288+57  
BOX BRIDGE AT STA 323+63
- ⑥ 512.5' GUARD RAIL REMOVAL @ BRIDGE NO. 19.2  
912.5' GUARD RAIL REMOVAL @ BRIDGE NO. 19.4  
412.5' GUARD RAIL REMOVAL @ BOX CULVERT, SITE 2, STA. 288+59  
412.5' GUARD RAIL REMOVAL @ BOX BRIDGE, SITE 3, STA. 323+63  
450' GUARD RAIL REMOVAL @ BRIDGE NO. 25.1

①

BRIDGE END QUANTITIES	MW	By	<b>MISSISSIPPI DEPARTMENT OF TRANSPORTATION</b> <b>SUMMARY OF QUANTITIES</b>	
	MW			
ADDITION AND CHANGES TO QUANTITIES	Date	Revision	Proj No: STP/EXB-0039-01(013) County: COPIAH	Sheet Number SQ-5
06/21/2017	08/18/2017		FILENAME : SQS.dgn Design Team Pickering	Checked MJW Date 3/10/17 17


**ADDENDUM**

STATE	PROJECT NO.
MISS	STP/EXB-0039-01(013)/STP/EXB-0039-02(048)

**SUMMARY OF QUANTITIES (SHEET 6)**

PAY ITEM NO.	PAY ITEM	UNIT	COPIAH : 103045-301000		
			Prelim	Final	
307-C004	6" Soil-Lime-Water Mixing, Class C	SY	8,062		
307-D001	Lime	TON	110		
307-S001	Bituminous Curing Seal	GAL	2,822		
	ALTERNATIVE ITEMS-SOIL TREATMENT				
308-A001	Cement	TON	94		① ②
308-B002	Soil-Cement-Water Mixing, Optional Mixers, Base	SY	8,062		
308-S001	Bituminous Curing Seal	GAL	2,822		
	OR				
311-A003	6" Processing Lime and Fly Ash Treated Course	SY	8,062		① ②
311-B001	Lime	TON	56		
311-C002	Fly Ash, Class C or F	TON	278		
311-S001	Bituminous Curing Seal	GAL	2,822		
321-A003	6" In-Grade Preparation	MI	1		⑦
403-A002	12.5-mm, MT, Asphalt Pavement	TON	5,033		②
403-A005	19-mm, MT, Asphalt Pavement	TON	3,986		
403-A014	9.5-mm, MT, Asphalt Pavement	TON	2,864		①
403-C002	19-mm, MT, Asphalt Pavement, Trench Widening	TON	862		②
406-A002	Cold Milling of Bituminous Pavement, All Depths	SY	2,400		
407-A001	Asphalt for Tack Coat	GAL	3,734		
413-E001	Sawing and Sealing Transverse Joints in Asphalt Pavement	LF	187		
423-A001	Rumble Strips, Ground In	MI	3		
501-E001	Expansion Joints, Without Dowels	LF	187		
502-A001	Reinforced Cement Concrete Bridge End Pavement	SY	404		
503-C010	Saw Cut, Full Depth	LF	800		
601-A001	Class "B" Structural Concrete	CY	328		④
601-B001	Class "B" Structural Concrete, Minor Structures	CY	1		⑤
602-A001	Reinforcing Steel	LBS	61,661		⑥
603-ALT003	18" Type A Alternate Pipe	LF	528		③
603-ALT004	18" Type B Alternate Pipe	LF	96		③
603-ALT006	24" Type A Alternate Pipe	LF	88		③
603-CE008	29" x 18" Concrete Arch Pipe, Class A III	LF	88		
603-CE018	44" x 27" Concrete Arch Pipe, Class A III	LF	104		
603-CF003	29" x 18" Concrete Arch Pipe End Section	EA	2		
603-CF005	44" x 27" Concrete Arch Pipe End Section	EA	2		
605-AA001	Geotextile for Subsurface Drainage, Type III	SY	104		①
605-O002	4" Perforated Sewer Pipe for Underdrains, SDR 23.5	LF	187		①
605-P002	4" Non-perforated Sewer Pipe for Underdrains, SDR 23.5	LF	20		①
605-W001	Filter Material for Combination Storm Drain and/or Underdrains, Type A, FM	CY	7		①
	ALTERNATIVE ITEMS-FILTER MATERIAL				
605-W002	Filter Material for Combination Storm Drain and/or Underdrains, Type B, FM	CY	118		①
	OR				

- ① INCLUDES 2,824 TONS FOR ROADWAYS AND 40 TONS FOR DRIVEWAYS
- ② INCLUDES 2,323 TONS FOR ROADWAYS, 54 TONS FOR DRIVEWAYS, 2,655 TONS FOR LEVELING
- ③ TYPE A OR B ALTERNATE REINFORCED CONCRETE PIPE CLASS III OR CORRUGATED POLYETHYLENE PIPE OR POLY VINYL CHLORIDE PIPE
- ④ INCLUDES 301 CUBIC YARDS FOR BOX BRIDGE AND 27 CUBIC YARDS FOR BOX CULVERTS
- ⑤ 1 CUBIC YARD FOR SIGN POSTS
- ⑥ INCLUDES 57,766 POUNDS FOR BOX BRIDGE, AND 3,895 POUNDS FOR BOX CULVERTS
- ⑦ SITE 1 LIMITS: STA 536+50 TO STA 557+00

BRIDGE END QUANTITIES	MW		By	<b>MISSISSIPPI DEPARTMENT OF TRANSPORTATION</b> <b>SUMMARY OF QUANTITIES</b>	
	ADDITION AND CHANGES TO QUANTITIES	MW			
06/21/2017	Date	08/18/2017	Date	FILENAME : SQS.dgn	Sheet Number 18
		Design Team Pickering	Checked MJW Date 3/10/17		

**ADDENDUM**

STATE	PROJECT NO.
MISS	STP/EXB-0039-01(013)/STP/EXB-0039-02(048)

<b>SUMMARY OF QUANTITIES (SHEET 7)</b>				
PAY ITEM NO.	PAY ITEM	UNIT	COPIAH : 103045-301000	
			Prelim	Final
605-W003	Filter Material for Combination Storm Drain and/or Underdrains, Type C, FM	CY	118	
606-B002	Guard Rail, Class A, Type 1, 'W' Beam	LF	713	
606-D022	Guard Rail, Bridge End Section, Type I	EA	7	
606-E001	Guard Rail, Terminal End Section	EA	7	
615-A001	Concrete Bridge End Barrier, 32"	LF	80	
617-A001	Right-of-Way Marker	EA	66	
618-A001	Maintenance of Traffic	LS	1	
618-C001	Construction and Removal of Detour Bridge	LS	1	
618-E001	Detour Bridge Piling	LF	1,624	
618-F001	Detour Bridge PDA Test Pile	LS	1	
619-A1003	Temporary Traffic Stripe, Continuous White, Paint	LF	23,944	
619-A1007	Temporary Traffic Stripe, Continuous White, Type 1 or 2 Tape	LF	3,740	
619-A2003	Temporary Traffic Stripe, Continuous Yellow, Paint	LF	1,240	
619-A3004	Temporary Traffic Stripe, Skip White, Paint	LF	1,185	
619-A4003	Temporary Traffic Stripe, Skip Yellow, Paint	LF	11,973	
619-A4007	Temporary Traffic Stripe, Skip Yellow, Type 1 or 2 Tape	LF	2,635	
619-A5002	Temporary Traffic Stripe, Detail, Paint	LF	368	
619-C7001	Two-Way Yellow Reflective High Performance Raised Marker	EA	379	
619-D1001	Standard Roadside Construction Signs, Less than 10 Square Feet	SF	283	
619-D2001	Standard Roadside Construction Signs, 10 Square Feet or More	SF	908	
619-G4001	Barricades, Type III, Double Faced	LF	72	
619-G4005	Barricades, Type III, Single Faced	LF	452	
619-G5001	Free Standing Plastic Drums	EA	134	
619-G7001	Warning Lights, Type "B"	EA	10	
619-K1001	Installation and Removal of Guard Rail, Type I, Class A	LF	100	
619-K4001	Installation and Removal of Guardrail, Terminal End Section	EA	4	
620-A001	Mobilization	LS	1	
622-A004	Engineer's Field Office Building, Type 3	EA	1	
	<b>ALTERNATIVE ITEMS-BRIDGE STRIPE</b>			
907-624-B002	6" Inverted Profile Thermoplastic Traffic Stripe, Continuous White	LF	3,741	
907-624-C001	6" Inverted Profile Thermoplastic Traffic Stripe, Skip Yellow	LF	1,887	
	OR			
628-B001	6" Cold Plastic Traffic Stripe, Continuous White	LF	3,741	
628-C002	6" Cold Plastic Traffic Stripe, Skip Yellow	LF	1,887	
626-C001	6" Thermoplastic Double Drop Edge Stripe, Continuous White	LF	16,058	
626-D002	6" Thermoplastic Double Drop Traffic Stripe, Skip Yellow	LF	8,162	
626-E002	6" Thermoplastic Double Drop Traffic Stripe, Continuous Yellow	LF	1,000	
626-G004	Thermoplastic Double Drop Detail Stripe, White	LF	1,262	
626-G005	Thermoplastic Double Drop Detail Stripe, Yellow	LF	239	
626-H002	Thermoplastic Double Drop Legend, White	LF	316	
627-J001	Two-Way Clear Reflective High Performance Raised Markers	EA	86	

⚠


①

②

⚠

- ① LENGTH OF GUARD RAIL BASED ON A TERMINAL SECTION OF 37.5 FEET. FOR ANY OTHER LENGTH TERMINAL, THE LENGTH OF NORMAL GUARDRAIL WILL BE ADJUSTED.
- ② FOR DETOUR BRIDGE AT STA 23+30 TO 24+30 WITH 1@100' MINIMUM SPAN LENGTH REQUIRED

⚠

BRIDGE END QUANTITIES	MW	ADDITION AND CHANGES TO QUANTITIES	By	Date	Revision		<b>MISSISSIPPI DEPARTMENT OF TRANSPORTATION</b> <b>SUMMARY OF QUANTITIES</b>
	MW						
06/21/2017		08/18/2017					Proj No: STP/EXB-0039-01(013) County: COPIAH FILENAME : SQS.dgn Design Team Pickering
							Working Number SQ-7 Sheet Number 19 Checked MJW Date 3/10/17

**ADDENDUM**


STATE	PROJECT NO.
MISS	STP/EXB-0039-01(013)/STP/EXB-0039-02(048)

**SUMMARY OF QUANTITIES (SHEET 8)**

PAY ITEM NO.	PAY ITEM	UNIT	COPIAH : 103045-301000	
			Prelim	Final
627-L001	Two-Way Yellow Reflective High Performance Raised Markers	EA	251	
629-A003	Vehicle Impact Attenuator, 55 MPH	EA	1	
630-A001	Standard Roadside Signs, Sheet Aluminum, 0.080" Thickness	SF	23	
630-A003	Standard Roadside Signs, Sheet Aluminum, 0.125" Thickness	SF	72	
630-C003	Steel U-Section Posts, 3.0 lb/ft	LF	56	
630-E004	Structural Steel Angles & Bars, 7/16" x 2 1/2" Flat Bar	LBS	131	
630-F006	Delineators, Guard Rail, White	EA	37	
630-G003	Type 3 Object Markers, OM-3L, Post Mounted	EA	4	
630-G007	Type 3 Object Markers, OM-3R, Post Mounted	EA	4	
630-K003	Welded & Seamless Steel Pipe Posts, 4"	LF	105	
699-A001	Roadway Construction Stakes	LS	1	

3

3

MVA	By	<b>MISSISSIPPI DEPARTMENT OF TRANSPORTATION</b>	
	Revision	<b>SUMMARY OF QUANTITIES</b>	
GUARDRAIL REVISION	Date	Proj No: STP/EXB-0039-01(013)	
	Date	County: COPIAH	
09/21/2017	Design Team Pickering	Checked MJW Date 3/10/17	Working Number SQ-8
			Sheet Number 20



**ADDENDUM**

STATE	PROJECT NO.
MISS	STP/EXB-0039-01(013)/STP/EXB-0039-02(048)


**SUMMARY OF QUANTITIES (SHEET 9)**

PAY ITEM NO.	PAY ITEM	UNIT	Total Amount	
			Prelim	Final
201-A001	Clearing and Grubbing	LS	1	
201-B001	Clearing and Grubbing	ACRE	1	
202-A001	Removal of Obstructions	LS	1	
202-B004	Removal of Asphalt Driveways, All Depths	SY	54	
202-B008	Removal of Asphalt Pavement, All Depths, Including Soil Cement Base	SY	33,442	
202-B017	Removal of Box Bridge	EA	1	
202-B018	Removal of Box Culvert	EA	1	
202-B023	Removal of Bridge	EA	3	
202-B050	Removal of Concrete Combination Curb & Gutter	LF	176	
202-B126	Removal of Fence, All Types	LF	1,162	
202-B150	Removal of Guard Rail Including Post, Blockouts & Hardware	LF	2,700	
202-B191	Removal of Pipe, 8" And Above	LF	249	
202-B206	Removal of Right-Of-Way Marker	EA	12	
202-B215	Removal of Sign Including Post & Footing	EA	20	
203-EX020	Borrow Excavation, AH, FME, Class B9	CY	85,200	
203-G001	Excess Excavation, FM, AH	CY	50,100	
206-A001	Structure Excavation	CY	511	
206-B001	Select Material for Undercuts, Contractor Furnished, FM	CY	45	
209-A005	Geotextile Stabilization, Type V, Non-Woven	SY	12,389	
213-C001	Superphosphate	TON	48	
217-A001	Ditch Liner	SY	4,236	
220-A001	Insect Pest Control	ACRE	48	
221-A001	Concrete Paved Ditch	CY	4	
223-A001	Mowing	ACRE	444	
225-A001	Grassing	ACRE	96	
225-B001	Agricultural Limestone	TON	48	
225-C001	Mulch, Vegetative Mulch	TON	189	
226-A001	Temporary Grassing	ACRE	96	
229-A001	Erosion Mat	SY	3,400	
234-A001	Temporary Silt Fence	LF	6,902	
234-C001	Super Silt Fence	LF	5,357	
235-A001	Temporary Erosion Checks	EA	160	
236-A008	Silt Basin, Type D	EA	7	
237-A002	Wattles, 20"	LF	1,021	
245-A001	Silt Dike	LF	234	
246-B001	Rockbags	EA	234	
249-A001	Riprap for Erosion Control	TON	190	
304-B005	Granular Material, Class 5, Group E	TON	9,900	
	ALTERNATIVE ITEMS-CRUSHED STONE			
304-F001	3/4" and Down Crushed Stone Base	TON	15,405	
	OR			
304-F002	Size 610 Crushed Stone Base	TON	15,405	
	OR			

- ① INCLUDES 174 LF FOR DITCH CHECKS AND 3,770 LF FOR ROADWAYS
- ② ROUNDED TO NEAREST 50 WHEN INCREASED BY 20% FOR SHRINKAGE.  
INCLUDES 4,200 TON FOR ROADWAYS AND 1,000 TON FOR DRIVEWAYS
- ③ ROUNDED TO NEAREST 50 WHEN INCREASED BY 25 PERCENT
- ④ BRIDGE NO. 19.2 AT STA 566+88  
SPANS: 1@57.25', 1@60', 1@180', 1@60', 1@40', 1@20'  
BRIDGE NO. 19.4 AT STA 578+30  
SPANS: 14@20'
- ⑤ BOX CULVERT AT STA 288+57  
BOX BRIDGE AT STA 323+63
- ⑥ 512.5' GUARD RAIL REMOVAL @ BRIDGE NO. 19.2  
912.5' GUARD RAIL REMOVAL @ BRIDGE NO. 19.4  
412.5' GUARD RAIL REMOVAL @ BOX CULVERT, SITE 2, STA. 288+59  
412.5' GUARD RAIL REMOVAL @ BOX BRIDGE, SITE 3, STA. 323+63  
450' GUARD RAIL REMOVAL @ BRIDGE NO. 25.1
- ⑦ INCLUDES 60 LF FOR DITCH CHECKS AND 2,111 LF FOR ROADWAYS
- ⑧ ROUNDED TO NEAREST 50 WHEN INCREASED BY 20% FOR SHRINKAGE.  
HINDS COUNTY: INCLUDES 3,750 TON FOR ROADWAYS AND 950 TON FOR DRIVEWAYS
- ⑨ ROUNDED TO NEAREST 50 WHEN INCREASED BY 25 PERCENT
- ⑩ BRIDGE NO. 25.1 AT STA 46+77  
SPANS: 1@34.5', 2@35.25', 2@53.25', 1@81.25', 1@81.75', 1@120.83', 1@34.5'
- ⑪ 450' GUARD RAIL REMOVAL @ BRIDGE NO. 25.1

②  
⑤  
④ ⑩  
⑥ ⑪  
③ ⑨  
③ ⑨  
① ⑦  
② ⑧



06/21/2017	BRIDGE END QUANTITIES	MW	By	<b>MISSISSIPPI DEPARTMENT OF TRANSPORTATION</b> <b>SUMMARY OF QUANTITIES - PROJECT TOTALS</b>  Proj No: STP/EXB-0039-01(013)/STP/EXB-0039-0 FMS: 102469-301000/103045-301000  FILENAME : SQS.dgn Design Team Pickering Checked MJW Date 3/10/17
06/21/2017	BRIDGE END QUANTITIES	MW		
06/19/2017	ADDITION AND CHANGES TO QUANTITIES	MW		
06/18/2017	ADDITION AND CHANGES TO QUANTITIES	MW		
				Working Number SQ-9  Sheet Number 21

**ADDENDUM**

STATE	PROJECT NO.
MISS	STP/EXB-0039-01(013)/STP/EXB-0039-02(048)

**SUMMARY OF QUANTITIES (SHEET 10)**

PAY ITEM NO.	PAY ITEM	UNIT	Total Amount	
			Prelim	Final
304-F003	Size 825B Crushed Stone Base	TON	15,405	
307-C004	6" Soil-Lime-Water Mixing, Class C	SY	13,573	
307-D001	Lime	TON	185	
307-S001	Bituminous Curing Seal	GAL	4,751	
	ALTERNATIVE ITEMS-SOIL TREATMENT			
308-A001	Cement	TON	158	
308-B002	Soil-Cement-Water Mixing, Optional Mixers, Base	SY	13,573	
308-S001	Bituminous Curing Seal	GAL	4,751	
	OR			
311-A003	6" Processing Lime and Fly Ash Treated Course	SY	13,573	
311-B001	Lime	TON	94	
311-C002	Fly Ash, Class C or F	TON	2,478	
311-S001	Bituminous Curing Seal	GAL	4,751	
321-A003	6" In-Grade Preparation	MI	2	
403-A002	12.5-mm, MT, Asphalt Pavement	TON	6,484	
403-A005	19-mm, MT, Asphalt Pavement	TON	5,547	
403-A014	9.5-mm, MT, Asphalt Pavement	TON	5,725	
403-C002	19-mm, MT, Asphalt Pavement, Trench Widening	TON	892	
406-A002	Cold Milling of Bituminous Pavement, All Depths	SY	3,200	
407-A001	Asphalt for Tack Coat	GAL	4,435	
413-E001	Sawing and Sealing Transverse Joints in Asphalt Pavement	LF	281	
423-A001	Rumble Strips, Ground In	MI	5	
501-E001	Expansion Joints, Without Dowels	LF	281	
502-A001	Reinforced Cement Concrete Bridge End Pavement	SY	606	
503-C010	Saw Cut, Full Depth	LF	800	
601-A001	Class "B" Structural Concrete	CY	328	
601-B001	Class "B" Structural Concrete, Minor Structures	CY	2	
602-A001	Reinforcing Steel	LBS	61,661	
603-ALT003	18" Type A Alternate Pipe	LF	880	
603-ALT004	18" Type B Alternate Pipe	LF	96	
603-ALT006	24" Type A Alternate Pipe	LF	88	
603-ALT009	30" Type A Alternate Pipe	LF	48	
603-ALT013	36" x 23" Type A Alternate Pipe	LF	56	
603-CA026	24" Reinforced Concrete Pipe, Class III	LF	96	
603-CA055	36" Reinforced Concrete Pipe, Class III	LF	64	
603-CA065	36" Reinforced Concrete Pipe, Class V, Jacked or Bored	LF	104	
603-CB004	24" Reinforced Concrete End Section	EA	2	
603-CB006	36" Reinforced Concrete End Section	EA	4	
603-CE008	29" x 18" Concrete Arch Pipe, Class A III	LF	88	
603-CE018	44" x 27" Concrete Arch Pipe, Class A III	LF	104	
603-CF003	29" x 18" Concrete Arch Pipe End Section	EA	2	

① ②

① ②

⑦ ⑫

② ⑨

① ⑧

②

④

⑤ ⑪

⑥

③ ⑩

③

③

⑩

⑩

- ① INCLUDES 2,824 TONS FOR ROADWAYS AND 40 TONS FOR DRIVEWAYS
- ② INCLUDES 2,323 TONS FOR ROADWAYS, 54 TONS FOR DRIVEWAYS, 2,655 TONS FOR LEVELING
- ③ TYPE A OR B ALTERNATE REINFORCED CONCRETE PIPE CLASS III OR CORRUGATED POLYETHYLENE PIPE OR POLY VINYL CHLORIDE PIPE
- ④ INCLUDES 301 CUBIC YARDS FOR BOX BRIDGE AND 27 CUBIC YARDS FOR BOX CULVERTS
- ⑤ 1 CUBIC YARD FOR SIGN POSTS
- ⑥ INCLUDES 57,766 POUNDS FOR BOX BRIDGE, AND 3,895 POUNDS FOR BOX CULVERTS
- ⑦ SITE 1 LIMITS: STA 536+50 TO STA 557+00
- ⑧ INCLUDES 1,418 TONS FOR ROADWAYS AND 33 TONS FOR DRIVEWAYS
- ⑨ INCLUDES 1,517 TONS FOR ROADWAYS AND 43 TONS FOR DRIVEWAYS
- ⑩ TYPE A OR B ALTERNATE REINFORCED CONCRETE PIPE CLASS III OR CORRUGATED POLYETHYLENE PIPE OR POLY VINYL CHLORIDE PIPE
- ⑪ 1 CUBIC YARD FOR SIGN POSTS
- ⑫ SITE 4 LIMITS: STA 32+14 TO STA 32+50  
SITE 4 LIMITS: STA 60+50 TO STA 63+96

① ② ③ ④

06/21/2017	BRIDGE END QUANTITIES	MW	By	<b>MISSISSIPPI DEPARTMENT OF TRANSPORTATION</b> <b>SUMMARY OF QUANTITIES - PROJECT TOTALS</b>  Proj No: STP/EXB-0039-01(013)/STP/EXB-0039-0 FMS: 102469-301000/103045-301000  Working Number SQ-10  Sheet Number 22
06/21/2017	BRIDGE END QUANTITIES	MW		
06/19/2017	ADDITION AND CHANGES TO QUANTITIES	MW		
06/18/2017	ADDITION AND CHANGES TO QUANTITIES	MW		
06/18/2017	ADDITION AND CHANGES TO QUANTITIES	MW		
06/21/2017	BRIDGE END QUANTITIES	MW	Design Team Pickering	Checked MJW Date 3/10/17






**ADDENDUM**

STATE	PROJECT NO.
MISS	STP/EXB-0039-01(013)/STP/EXB-0039-02(048)

SUMMARY OF QUANTITIES (SHEET 12)				
PAY ITEM NO.	PAY ITEM	UNIT	Total Amount	
			Prelim	Final
628-C002	6" Cold Plastic Traffic Stripe, Skip Yellow	LF	2,587	
626-C001	6" Thermoplastic Double Drop Edge Stripe, Continuous White	LF	26,040	
626-D002	6" Thermoplastic Double Drop Traffic Stripe, Skip Yellow	LF	12,453	
626-E002	6" Thermoplastic Double Drop Traffic Stripe, Continuous Yellow	LF	2,520	
626-G004	Thermoplastic Double Drop Detail Stripe, White	LF	2,288	
626-G005	Thermoplastic Double Drop Detail Stripe, Yellow	LF	357	
626-H002	Thermoplastic Double Drop Legend, White	LF	593	
627-J001	Two-Way Clear Reflective High Performance Raised Markers	EA	153	
627-L001	Two-Way Yellow Reflective High Performance Raised Markers	EA	376	
629-A003	Vehicular Impact Attenuator, 55 MPH	EA	1	
630-A001	Standard Roadside Signs, Sheet Aluminum, 0.080" Thickness	SF	43	
630-A003	Standard Roadside Signs, Sheet Aluminum, 0.125" Thickness	SF	174	
630-C003	Steel U-Section Posts, 3.0 lb/ft	LF	171	
630-E004	Structural Steel Angles & Bars, 7/16" x 2 1/2" Flat Bar	LBS	262	
630-F006	Delineators, Guard Rail, White	EA	55	
630-G003	Type 3 Object Markers, OM-3L, Post Mounted	EA	6	
630-G007	Type 3 Object Markers, OM-3R, Post Mounted	EA	6	
630-K003	Welded & Seamless Steel Pipe Posts, 4"	LF	210	
907-630-O004	Remove and Reset Sign, All Sizes	EA	4	
699-A001	Roadway Construction Stakes	LS	1	

3

3


09/21/2017	GUARDRAIL REVISION	MW	<b>MISSISSIPPI DEPARTMENT OF TRANSPORTATION</b> <b>SUMMARY OF QUANTITIES - PROJECT TOTALS</b>	
09/21/2017	GUARDRAIL REVISIONS	MW		
09/21/2017	By	Revision	Proj No: STP/EXB-0039-01(013)/STP/EXB-0039-0 FMS: 102469-301000/103045-301000	Working Number SQ-12
09/21/2017	Date	Design Team Pickering	FILENAME : SQS.dgn Checked MJW Date 3/10/17	Sheet Number 24

**ADDENDUM**

STATE	PROJECT NO.
MISS.	STP/EXB-0039-01(013) STP/EXB-0039-02(048)

GUARD RAIL REQUIRED														
WK. NO.	STATION	STATE STD. (INSTALL)	GUARD RAIL LENGTHS				CABLE ANCHOR TYPE "1"	TERMINAL SECTION	BRIDGE END SECTION TYPE I	SINGLE DELINEATORS		TEMP. GUARD RAIL	TEMP. TERMINAL END SECTION	REMARKS
			DIST. A	DIST. B	DIST. C	DIST. D				WHITE	YELLOW			
4	565+45 RT		193.1	150.0				1	6					
4	565+45 LT				105.6	62.5		1	3					
4	582+55 RT				105.6	62.5		1	3					
4	582+55 LT		193.1	150.0				1	6					
7	322+83 RT		155.6	112.5				1	4					
7	322+83 LT				105.6	62.5		1	3					
7	324+43 LT		155.6	112.5				1	4					
8	24+00 RT								2		25.0	1		
8	24+00 LT								2		25.0	1		
8	24+50 RT								2		25.0	1		
8	24+50 LT								2		25.0	1		
TOTAL - COPIAH				L. F. 525.0		L. F. 187.5	EACH	EACH 7	EACH 7	EACH 37	EACH	L.F. 100	EACH 4	
9	46+10 RT		193.1	150.0				1	6					
9	46+10 LT				105.6	62.5		1	3					
10	53+10 RT				105.6	62.5		1	3					
10	53+10 LT		193.1	150.0				1	6					
TOTAL - HINDS				L. F. 300.0		L. F. 125.0	EACH	EACH 4	EACH 4	EACH 18	EACH	L.F. 0	EACH 0	
TOTAL - PROJECT				L.F. 825.0		L.F. 312.5	EACH	EACH 11.0	EACH 11.0	EACH 55.0	EACH 0.0	L.F. 100.0	EACH 4.0	

9/21/2017 11:25 AM EQ.DGN MISSISSIPPI DEPARTMENT OF TRANSPORTATION

MISSISSIPPI DEPARTMENT OF TRANSPORTATION <b>ESTIMATED QUANTITIES</b> GUARD RAIL		 COUNTY: COPIAH/HINDS PROJ. NUM.: STP/EXB-0039-01(013)/02(048) WORKING NUMBER EQ-5
FILENAME: EQ.DGN DESIGN TEAM PICKERING CHECKED DATE 03/10/17	SHEET NUMBER 30	

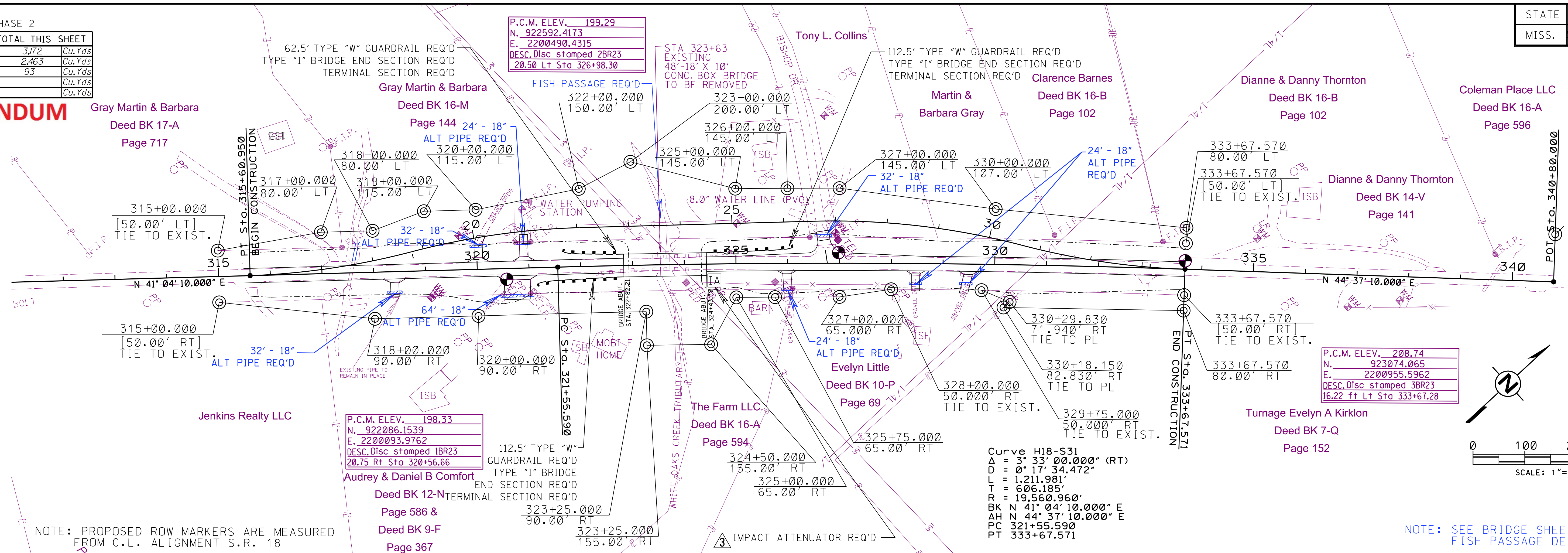
STATE	PROJECT NO.
MISS.	STP/EXB-0039-01(013)

PHASE 2

EARTHWORK TOTAL THIS SHEET		
Cut	3,172	Cu.Yds
Fill	2,463	Cu.Yds
Excess	93	Cu.Yds
Surplus		Cu.Yds
Borrow (B9)		Cu.Yds

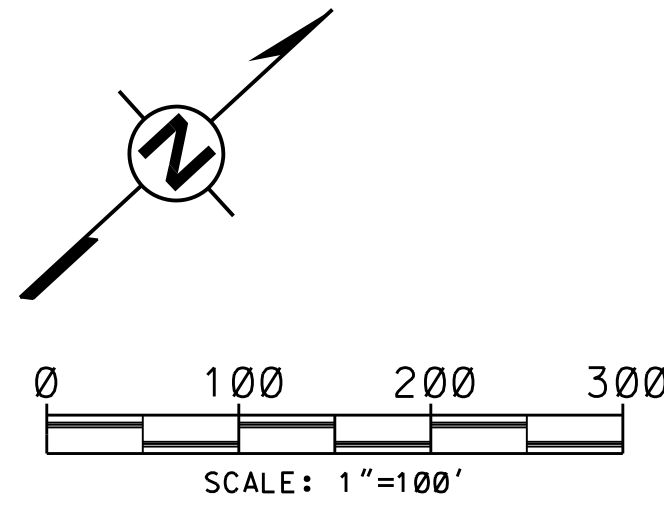
REVISIONS	
DATE	BY
06/21/17	MJW
08/18/17	MJW
09/21/17	MJW

**ADDENDUM**

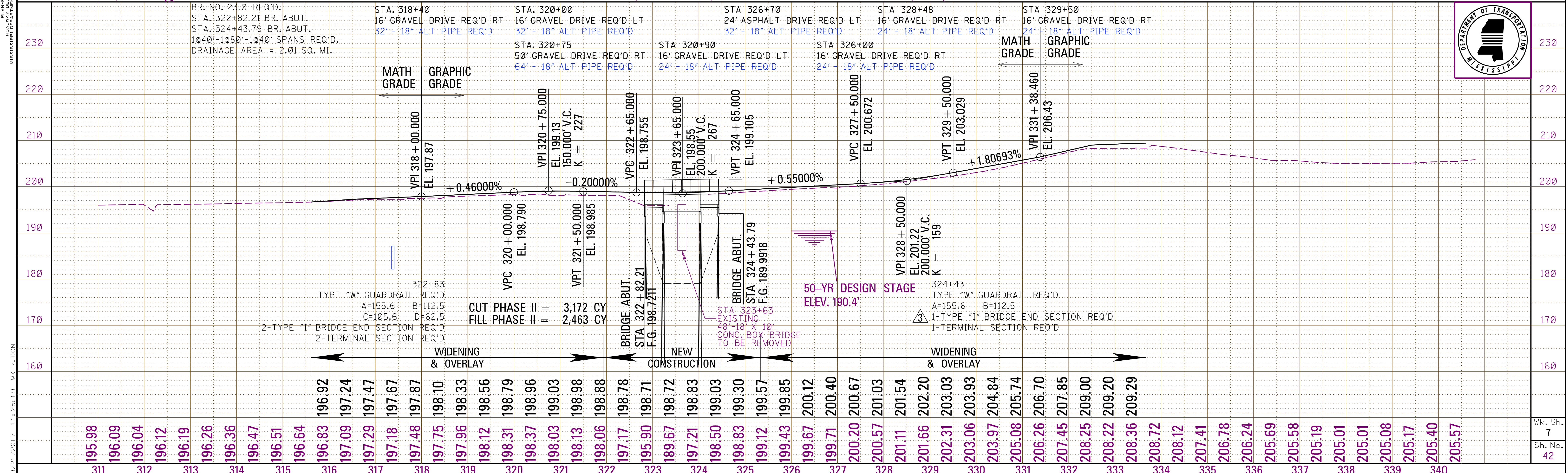


NOTE: PROPOSED ROW MARKERS ARE MEASURED FROM C.L. ALIGNMENT S.R. 18

NOTE: SEE BRIDGE SHEET FP-1 FOR FISH PASSAGE DETAILS



9/21/2017 11:25:19 WK 7.DGN



Wk. Sh. 7  
Sh. No. 42