

SECTION 905 -- PROPOSAL (CONTINUED)

I (We) hereby certify by digital signature and electronic submission via Bid Express of the Section 905 proposal below, that all certifications, disclosures and affidavits incorporated herein are deemed to be duly executed in the aggregate, fully enforceable and binding upon delivery of the bid proposal. I (We) further acknowledge that this certification shall not extend to the bid bond or alternate security which must be separately executed for the benefit of the Commission. This signature does not cure deficiencies in any required certifications, disclosures and/or affidavits. I (We) also acknowledge the right of the Commission to require full and final execution on any certification, disclosure or affidavit contained in the proposal at the Commission's election upon award. Failure to so execute at the Commission's request within the time allowed in the Standard Specifications for execution of all contract documents will result in forfeiture of the bid bond or alternate security.

Bidder acknowledges receipt of and has added to and made a part of the proposal and contract documents the following addendum (addenda):

ADDENDUM NO. <u> 1 </u>	DATED <u> 12/23/2017 </u>	ADDENDUM NO. <u> </u>	DATED <u> </u>
ADDENDUM NO. <u> </u>	DATED <u> </u>	ADDENDUM NO. <u> </u>	DATED <u> </u>
ADDENDUM NO. <u> </u>	DATED <u> </u>	ADDENDUM NO. <u> </u>	DATED <u> </u>

Number	Description
--------	-------------

- | | |
|---|--|
| 1 | Revised Table of Contents; Revised NTB No. 2; Deleted NTB Nos. 423, & 425; Revised NTB No. 510; Deleted SP 907-659-1; Revised Bid Items; Revised or Added Plan Sheet 2, 16, 26, 2001, 2023, & 3017; Amendment EBS Download Required. |
|---|--|

TOTAL ADDENDA: 1
(Must agree with total addenda issued prior to opening of bids)

Respectfully Submitted,

DATE _____

Contractor

BY _____
Signature

TITLE _____

ADDRESS _____

CITY, STATE, ZIP _____

PHONE _____

FAX _____

E-MAIL _____

(To be filled in if a corporation)

Our corporation is chartered under the Laws of the State of _____ and the names, titles and business addresses of the executives are as follows:

_____ President	_____ Address
--------------------	------------------

_____ Secretary	_____ Address
--------------------	------------------

_____ Treasurer	_____ Address
--------------------	------------------

The following is my (our) itemized proposal.
 HSIP-0018-03(024)/ 106863303000
 Oktibbeha County(ies)

Revised 01/26/2016

**MISSISSIPPI DEPARTMENT OF TRANSPORTATION
TABLE OF CONTENTS**

PROJECT: HSIP-0018-03(024)/106863303 - Oktibbeha

Section 901 - Advertisement

Section 904 - Notice to Bidders

#1	Governing Specification
#2	Status of ROW, w/ Attachments
#3	Final Cleanup
#7	Disadvantaged Business Enterprise In Federal-Aid Highway Construction, w/ Supplement
#8	Errata and Modifications to the 2017 Standard Specifications
#9	Federal Bridge Formula
#10	DUNS Requirement for Federal Funded Projects
#12	MASH Compliant Devices
#113	Tack Coat
#114	Right-of-Way Plat
#296	Reduced Speed Limit Signs
#418	Contract Time
#419	Specialty Items
#420	Sequence of Operations
#422	Lane Closure Restrictions
#424	Cooperation Between Contractors
#445	Mississippi Agent and Qualified Nonresident Agent
#457	Portable Construction Lighting
#507	Liquidated Damages
#508	Pull Box Correction
#509	Additional Cleaning Requirements
#510	Training Provisions
906	Required Federal Contract Provisions -- FHWA 1273, w/Supplements

Section 907 - Special Provisions

907-102-2	Bidding Requirements and Conditions
907-103-2	Award and Execution of Contract
907-619-1	Construction Safety Fence
907-650-3	On-Street Video Equipment
907-661-1	Fiber Optic Cable
907-663-3	Networking Equipment
907-666-1	Bluetooth Detection System

Section 905 - Proposal, Proposal Bid Items, Combination Bid Proposal

Certification of Performance - Prior Federal-Aid Contracts

Certification Regarding Non-Collusion, Debarment and Suspension

SAM.GOV Registration and DUNS Number

Section 902 - Contract Form

Section 903 - Contract Bond Forms

PROJECT: HSIP-0018-03(024)/106863303 - Oktibbeha

Form -- OCR-485

(REVISIONS TO THE ABOVE WILL BE INDICATED ON THE SECOND SHEET
OF SECTION 905 AS ADDENDA)

12/27/2017 12:42 PM

MISSISSIPPI DEPARTMENT OF TRANSPORTATION

SECTION 904 - NOTICE TO BIDDERS NO. 2

CODE: (IS)

DATE: 03/01/2017

SUBJECT: Status of Right-of-Way

Although it is desirable to have acquired all rights-of-way and completed all railroad agreements, utility adjustments and work to be performed by others prior to receiving bids, sometimes it is not considered to be in the public interest to wait until each and every such clearance has been obtained. The bidder is hereby advised of possible unacquired rights-of-way, relocations, railroad agreements and utilities adjustments which have not been completed.

The status of right-of-way acquisition, utility adjustments, encroachments, potentially contaminated sites, railroad facilities, improvements, and asbestos contamination are set forth in the following attachments.

In the event right of entry is not available to ALL parcels of right-of-way and/or all work that is to be accomplished by others on the date set forth in the contract for the Notice to Proceed is not complete, the Department will issue a restricted Notice to Proceed.

STATUS OF RIGHT-OF-WAY

HSIP-0018-03(024)

106863-303000

Oktibbeha County

December 19, 2017

All rights of way and legal rights of entry have been acquired, except:

None.

ASBESTOS CONTAMINATION STATUS OF BUILDINGS
TO BE REMOVED BY THE CONTRACTOR

HSIP-0018-03(024)

106863-303000

Oktibbeha County

September 18, 2017

Reference is made to notices to bidders entitled "Asbestos National Emission Standards for Hazardous Air Pollutants (NESHAP)" and "Removal of Obstructions".

The following pertinent information is furnished concerning asbestos containing materials (ACMs), if any, found in buildings to be removed by the Contractor.

There are no buildings in the contract to be removed.

STATUS OF POTENTIALLY CONTAMINATED SITES

HSIP-0018-03(024)

106863-303000

Oktibbeha County

September 18, 2017

This project has been inspected and there was no visible indication of potentially contaminated sites within the proposed right of way.

MISSISSIPPI DEPARTMENT OF TRANSPORTATION

Inter-Departmental Memorandum

TO: ROW Division
Trudi Loflin

DATE: December 18, 2017

FROM: District 1
Jamie McDonald *JM.*

SUBJECT OR PROJECT NO: HSIP-0018-03(024)
106863/303000

INFORMATION COPY TO:

COUNTY: Oktibbeha

Asst. Chief Engineer – Pre Construction
District Engineer (Holley)
Project Engineer
Project File

District 1 Status Report

1. **STATUS OF RIGHT OF WAY:** All ROW necessary for construction has been acquired.
2. **STATUS OF ENCROACHMENTS:** There are no encroachments onto the Right of way within the limits of the project.
3. **STATUS OF AFFECTED RAILROAD OPERATING FACILITIES:** None affected.
4. **STATUS OF REQUIRED UTILITY RELOCATIONS:** All known utilities in conflict have been relocated.
5. **STATUS OF CONSTRUCTION AGREEMENT:** This project has a MOU in lieu of the construction agreement and has been signed by the City of Starkville and executed.

Improvements to be included in Notice to Bidders to be removed by the Construction Contractor
FMS Construction Project No: 106863-303000
External ROW No: HSIP-0018-03(024)

Parcel No:
Station No:
Property Owner:
Description/Pictures:

NA

MISSISSIPPI DEPARTMENT OF TRANSPORTATION

SECTION 904 - NOTICE TO BIDDERS NO. 510

CODE: (SP)

DATE: 11/21/2017

SUBJECT: Employee Training Requirements

PROJECT: HSIP-0018-03(024) / 106863303 – Oktibbeha County

Bidders are hereby advised the MDOT Employee Training requirements referred to in Special Provisions 907-650-2 and 907-661-1 **WILL NOT** be required and should be disregarded.

Work necessary to install Median Barrier on MS 12 from West of Eckford Drive to Russell Street, known as Federal Aid Project No. HSIP-0018-03(024) / 106863303 in Oktibbeha County.

Line No.	Item Code	Adj Code	Quantity	Units	Description [Fixed Unit Price]
Roadway Items					
0010	202-B004		98	Square Yard	Removal of Asphalt Driveways, All Depths
0020	202-B052		605	Square Yard	Removal of Concrete Driveways, All Depths
0030	202-B059		26	Square Yard	Removal of Concrete Median & Island Pavement, All Depths
0040	202-B062		737	Square Yard	Removal of Concrete Overlaid w/ Asphalt Pavement, All Depths
0050	202-B080		92	Square Yard	Removal of Concrete Sidewalk
0060	202-B083		10	Square Yard	Removal of Concrete Slope Paving
0070	202-B089		1,041	Linear Feet	Removal of Curb &/or Curb and Gutter, All Types
0080	202-B114		100	Linear Feet	Removal of Debris and Sand From Pipe, All Sizes
0090	202-B135		4	Each	Removal of Guard Post
0100	202-B165		6	Each	Removal of Inlets, All Sizes
0110	202-B172		720	Square Feet	Removal of Legend, All Types
0120	202-B186		217	Square Feet	Removal of Overhead Sign Panels
0130	202-B191		8	Linear Feet	Removal of Pipe, 8" And Above
0140	202-B213		17	Each	Removal of Sign
0150	202-B215		29	Each	Removal of Sign Including Post & Footing
0160	202-B240		2,000	Linear Feet	Removal of Traffic Stripe
0170	203-EX041	(E)	200	Cubic Yard	Borrow Excavation, AH, LVM, Class B9-6
0180	203-G002	(E)	450	Cubic Yard	Excess Excavation, LVM, AH
0190	206-A001	(S)	67	Cubic Yard	Structure Excavation
0200	209-A004		1,389	Square Yard	Geotextile Stabilization, Type V
0210	211-C001	(E)	49	Cubic Yard	Topsoil for Plant Holes, Contractor Furnished
0220	216-A001		942	Square Yard	Solid Sodding
0230	219-A001		19	Thousand Gallon	Watering [\$20.00]
0240	220-A001		1	Acre	Insect Pest Control [\$30.00]
0250	223-A001		1	Acre	Mowing [\$50.00]
0260	226-A001		1	Acre	Temporary Grassing
0270	230-D001		292	Square Feet	Bed Preparation
0280	233-A003		17	Cubic Yard	Tree Bark Mulch, Type III
0290	233-A005		33	Cubic Yard	Tree Bark Mulch, Type V
0300	234-A001		600	Linear Feet	Temporary Silt Fence
0310	234-D001		2	Each	Inlet Siltation Guard
0320	237-A001		200	Linear Feet	Wattles, 12"

Line No.	Item Code	Adj Code	Quantity	Units	Description [Fixed Unit Price]
0330	237-A002		200	Linear Feet	Wattles, 20"
0340	246-A001		200	Linear Feet	Sandbags
0350	403-A005	(BA1)	203	Ton	19-mm, MT, Asphalt Pavement
0360	403-A014	(BA1)	3,317	Ton	9.5-mm, MT, Asphalt Pavement
0370	406-A002		30,275	Square Yard	Cold Milling of Bituminous Pavement, All Depths
0380	407-A001	(A2)	3,036	Gallon	Asphalt for Tack Coat
0390	503-C006		1,053	Linear Feet	Saw Cut, 6-inch
0400	503-C010		6,900	Linear Feet	Saw Cut, Full Depth
0410	601-B001	(S)	38	Cubic Yard	Class "B" Structural Concrete, Minor Structures
0420	602-A001	(S)	4,825	Pounds	Reinforcing Steel
0430	603-CA011	(S)	56	Linear Feet	18" Reinforced Concrete Pipe, Class III
0440	603-CA026	(S)	72	Linear Feet	24" Reinforced Concrete Pipe, Class III
0450	603-SB031	(S)	1	Each	24" Branch Connections, Stub into Inlet
0460	604-A001		632	Pounds	Castings
0470	608-A001	(S)	200	Square Yard	Concrete Sidewalk, Without Reinforcement
0480	608-C001		102	Square Feet	Detectable Warning Panels
0490	609-B002	(S)	457	Linear Feet	Concrete Curb, Header
0500	609-B003	(S)	3,053	Linear Feet	Concrete Curb, Special Design
0510	609-D012	(S)	1,157	Linear Feet	Combination Concrete Curb and Gutter Type 3A Modified
0520	609-D014	(S)	816	Linear Feet	Combination Concrete Curb and Gutter Type 3B Modified
0530	614-B001	(S)	206	Square Yard	Concrete Driveway, With Reinforcement
0540	616-A001	(S)	13	Square Yard	Concrete Median and/or Island Pavement, 10-inch
0550	616-A004	(S)	210	Square Yard	Concrete Median and/or Island Pavement, 4-inch
0560	617-A001		28	Each	Right-of-Way Marker
0570	618-A001		1	Lump Sum	Maintenance of Traffic
0580	619-A1001		4	Mile	Temporary Traffic Stripe, Continuous White
0590	619-A2001		4	Mile	Temporary Traffic Stripe, Continuous Yellow
0600	619-A3001		4	Mile	Temporary Traffic Stripe, Skip White
0610	619-A5001		13,390	Linear Feet	Temporary Traffic Stripe, Detail
0620	619-A6001		3,813	Square Feet	Temporary Traffic Stripe, Legend
0630	619-A6002		7,988	Linear Feet	Temporary Traffic Stripe, Legend
0640	619-D1001		49	Square Feet	Standard Roadside Construction Signs, Less than 10 Square Feet
0650	619-D2001		344	Square Feet	Standard Roadside Construction Signs, 10 Square Feet or More
0660	619-D3001		1	Each	Remove and Reset Signs, All Sizes

Line No.	Item Code	Adj Code	Quantity	Units	Description [Fixed Unit Price]
0670	619-E3001		2	Each	Changeable Message Sign
0680	619-G4001		18	Linear Feet	Barricades, Type III, Double Faced
0690	619-G5001		750	Each	Free Standing Plastic Drums
0700	619-G7001		2	Each	Warning Lights, Type "B"
0710	619-H1001		1	Lump Sum	Traffic Signals
0720	620-A001		1	Lump Sum	Mobilization
0730	626-A004		2	Mile	6" Thermoplastic Traffic Stripe, Skip White
0740	626-B003		2,593	Linear Feet	6" Thermoplastic Traffic Stripe, Continuous White
0750	626-C004		2	Mile	6" Thermoplastic Edge Stripe, Continuous White
0760	626-F003		1	Mile	6" Thermoplastic Edge Stripe, Continuous Yellow
0770	626-G002		3,083	Linear Feet	Thermoplastic Detail Stripe, White
0780	626-G003		2,580	Linear Feet	Thermoplastic Detail Stripe, Yellow
0790	626-H004		1,575	Square Feet	Thermoplastic Legend, White
0800	626-H005		3,826	Linear Feet	Thermoplastic Legend, White
0810	627-K001		369	Each	Red-Clear Reflective High Performance Raised Markers
0820	627-L001		27	Each	Two-Way Yellow Reflective High Performance Raised Markers
0830	630-A001		152	Square Feet	Standard Roadside Signs, Sheet Aluminum, 0.080" Thickness
0840	630-A003		133	Square Feet	Standard Roadside Signs, Sheet Aluminum, 0.125" Thickness
0850	630-B002		387	Square Feet	Interstate Directional Signs, Bolted Extruded Aluminum Panels, Ground Mounted
0860	630-B003		219	Square Feet	Interstate Directional Signs, Bolted Extruded Aluminum Panels, Overhead Mounted
0870	630-C002		22	Linear Feet	Steel U-Section Posts, 2.0 lb/ft
0880	630-C003		300	Linear Feet	Steel U-Section Posts, 3.0 lb/ft
0890	630-D007		42	Linear Feet	Structural Steel Beams, W6 x 15
0900	630-D008		43	Linear Feet	Structural Steel Beams, W6 x 9
0910	630-E001		44	Pounds	Structural Steel Angles & Bars, 3 1/2" x 3 1/2" x 1/4" Angles
0920	630-E002		37	Pounds	Structural Steel Angles & Bars, 3" x 3" x 1/4" Angles
0930	630-E004		31	Pounds	Structural Steel Angles & Bars, 7/16" x 2 1/2" Flat Bar
0940	630-K001		14	Linear Feet	Welded & Seamless Steel Pipe Posts, 3 1/2"
0950	630-K003		16	Linear Feet	Welded & Seamless Steel Pipe Posts, 4"
0960	632-A007		2	Each	Solid State Traffic Cabinet Assembly, Type III Cabinet, Type 1 Controller
0970	632-A010		2	Each	Solid State Traffic Cabinet Assembly, Type IV Cabinet, Type 1 Controller
0980	632-C001		1	Each	Modify Existing Traffic Signal Cabinet Assembly
0990	633-A001		2	Each	Uninterruptable Power Supply

Line No.	Item Code	Adj Code	Quantity	Units	Description [Fixed Unit Price]
1000	634-A020		1	Each	Traffic Signal Equipment Pole, Type II, 17' Shaft, 50' Arm
1010	634-A170		2	Each	Traffic Signal Equipment Pole, Type VI, 8' Shaft
1020	634-A242		1	Each	Traffic Signal Equipment Pole, Type II(L), 30' Shaft, 35' Arm
1030	634-A244		3	Each	Traffic Signal Equipment Pole, Type II(L), 30' Shaft, 45' Arm
1040	634-A245		2	Each	Traffic Signal Equipment Pole, Type II(L), 30' Shaft, 50' Arm
1050	634-A247		1	Each	Traffic Signal Equipment Pole, Type II(L), 30' Shaft, 60' Arm
1060	634-A527		1	Each	Traffic Signal Equipment Pole, Type III(L), 30' Shaft, 45' & 50' Arm
1070	634-A534		1	Each	Traffic Signal Equipment Pole, Type III(L), 30' Shaft, 50' & 55' Arm
1080	634-A550		1	Each	Traffic Signal Equipment Pole, Type III(L), 30' Shaft, 70' & 70' Arm
1090	634-A622		1	Each	Traffic Signal Equipment Pole, Type III(L), 22' Shaft, 55' & 70' Arm
1100	634-C005		50	Cubic Yard	Pole Foundations, Class "B" Concrete
1110	635-A059		29	Each	Traffic Signal Head, Type 1
1120	635-A065		10	Each	Traffic Signal Head, Type 2 FYA
1130	635-A070		4	Each	Traffic Signal Head, Type 3
1140	635-A073		1	Each	Traffic Signal Head, Type 4
1150	635-A076		2	Each	Traffic Signal Head, Type 6
1160	635-A079		1	Each	Traffic Signal Head, Type 7R
1170	636-B016		180	Linear Feet	Electric Cable, Underground in Conduit, IMSA 20-1, AWG 14, 5 Conductor
1180	636-B018		1,605	Linear Feet	Electric Cable, Underground in Conduit, IMSA 20-1, AWG 14, 8 Conductor
1190	636-B036		860	Linear Feet	Electric Cable, Underground in Conduit, THHN, AWG #10, 2 Conductor
1200	636-B051		185	Linear Feet	Electric Cable, Underground in Conduit, THHN, AWG #6, 3 Conductor
1210	636-C009		1,063	Linear Feet	Electric Cable, Aerial Supported, IMSA 20-1, AWG 14, 8 Conductor
1220	637-A009		20	Each	Pull Box Enclosure, Type 2, Tier 22
1230	637-A013		5	Each	Pull Box Enclosure, Type 4, Tier 22
1240	637-A015		7	Each	Pull Box Enclosure, Type 5, Tier 22
1250	637-C026		85	Linear Feet	Traffic Signal Conduit, Underground, Type 4, 1"
1260	637-C028		200	Linear Feet	Traffic Signal Conduit, Underground, Type 4, 2"
1270	637-C030		235	Linear Feet	Traffic Signal Conduit, Underground, Type 4, 3"
1280	637-D001		75	Linear Feet	Traffic Signal Conduit, Underground Drilled or Jacked, Rolled Pipe, 1"
1290	637-D003		735	Linear Feet	Traffic Signal Conduit, Underground Drilled or Jacked, Rolled Pipe, 3"
1300	637-D004		350	Linear Feet	Traffic Signal Conduit, Underground Drilled or Jacked, Rolled Pipe, 4"
1310	637-I001		6,490	Linear Feet	Traffic Signal Conduit Bank, Underground, Drilled or Jacked, Rolled Pipe, 2 @ 2"
1320	637-I002		1,160	Linear Feet	Traffic Signal Conduit Bank, Underground, Drilled or Jacked, Rolled Pipe, 2"

Line No.	Item Code	Adj Code	Quantity	Units	Description [Fixed Unit Price]
1330	639-B001		16	Each	Optical Detector
1340	639-C001		4	Each	Multimode Phase Selector
1350	639-E001		2,290	Linear Feet	Optical Detector Cable
1360	641-A002		16	Each	Signal Stop Bar Radar Detection, 1 Sensor, Type 2
1370	641-B002		8	Each	Signal Advanced Radar Detection, 1 Sensor, Type 2
1380	641-C001		2	Each	ITS Radar Detection, 1 Sensor
1390	641-D001		2,950	Linear Feet	Radar Detection Communication Cable
1400	645-B001		2	Each	Accessible Pedestrian Detection Assembly
1410	647-A001		1	Lump Sum	Removal of Existing Traffic Signal Equipment
1420	653-A002		43	Square Feet	Traffic Sign, Type III
1430	653-B003		104	Square Feet	Street Name Sign, Type III
1440	660-A004		1	Each	Equipment Cabinet, Type C
1450	699-A001		1	Lump Sum	Roadway Construction Stakes
1460	815-D001	(S)	28	Cubic Yard	Concrete Slope Paving
1470	907-619-S001		400	Linear Feet	Construction Safety Fence
1480	907-650-A002		11	Each	On Street Video Equipment, Fixed Type
1490	907-650-A003		3	Each	On Street Video Equipment, PTZ Type
1510	907-661-A004		6,315	Linear Feet	Fiber Optic Cable, 72 SM
1520	907-661-B002		1,350	Linear Feet	Fiber Optic Drop Cable, 12 SM
1530	907-663-A001		3	Each	Network Switch, Type A
1540	907-663-A002		2	Each	Network Switch, Type B
1550	907-663-A005		1	Each	Network Switch, Type E
1560	907-666-A001		2	Each	Bluetooth Detection System, Type A
ALTERNATE GROUP AA NUMBER 1					
1570	304-H001	(GY)	485	Cubic Yard	3/4" and Down Crushed Stone Base, LVM
ALTERNATE GROUP AA NUMBER 2					
1580	304-H002	(GY)	485	Cubic Yard	Size 610 Crushed Stone Base, LVM
ALTERNATE GROUP AA NUMBER 3					
1590	304-H003	(GY)	485	Cubic Yard	Size 825B Crushed Stone Base, LVM

STATE	PROJECT NO.
MISS.	HSIP-0018-03(024)

WKG. NO. _____ SH. NO. _____

DESCRIPTION OF SHEET

DESCRIPTION OF SHEET

TITLE SHEET (1)

DETAILED INDEX & GENERAL NOTES (5)

DETAILED INDEX
DETAILED INDEX
DETAILED INDEX

GENERAL NOTES
GENERAL NOTES

TYPICAL SECTION SHEETS (6)

TYPICAL SECTIONS - HWY 12
TYPICAL SECTIONS - HWY 12
TYPICAL SECTIONS - MILL & OVERLAY
TYPICAL SECTIONS - SPECIAL CURB DETAILS
TYPICAL SECTIONS - SPECIAL CURB DETAILS
TYPICAL SECTIONS - TRENCH WIDENING, SIDEWALK REPLACEMENT.

QUANTITY SHEETS (14)

SUMMARY OF QUANTITIES
SUMMARY OF QUANTITIES
SUMMARY OF QUANTITIES
SUMMARY OF QUANTITIES

ESTIMATED QUANTITIES - DRAINAGE STRUCTURES
ESTIMATED QUANTITIES - JUNCTION BOXES, CURB AND GUTTER
ESTIMATED QUANTITIES - SIDEWALK, DRIVEWAYS, CAP EXISTING INLET

ESTIMATED QUANTITIES - PERMANENT EROSION CONTROL
ESTIMATED QUANTITIES - TRAFFIC CONTROL ITEMS, PAVEMENT MARKINGS
ESTIMATED QUANTITIES - TRAFFIC CONTROL SIGNS

ESTIMATED QUANTITIES - STANDARD ROADSIDE SIGNS
ESTIMATED QUANTITIES - REMOVAL ITEMS
ESTIMATED QUANTITIES - TRAFFIC SIGNAL
ESTIMATED QUANTITIES - ITS ITEMS

PLAN & PROFILE SHEETS (13)

PLAN VIEW - B.O.P. TO STA. 1751+60
PLAN VIEW - STA. 1751+60 TO STA. 1757+60
PLAN VIEW - STA. 1757+60 TO STA. 1763+60
DRAINAGE PROFILES - HWY 12
PLAN VIEW - STA. 1763+60 TO STA. 1769+60
PLAN VIEW - STA. 1769+60 TO STA. 1775+60
PLAN VIEW - S. MONTOMERY ST. / MS HWY 12
DRAINAGE PROFILES - HWY 12
PLAN VIEW - STA. 1775+60 TO STA. 1781+60
PLAN VIEW - STA. 1781+60 TO STA. 1787+60
PLAN VIEW - BLACKJACK RD AND SPRING ST / MS HWY 12
PLAN VIEW - B.O.P. TO STA. 1772+00
PLAN VIEW - STA. 1772+00 TO E.O.P.

FORM GRADE SHEETS (3)

FORM GRADE - INTERSECTION AT STA. 1762+01.000 RT., 1762+11.133 LT.
FORM GRADE - INTERSECTION AT STA. 1772+67.851 LT.
FORM GRADE - INTERSECTION AT STA. 1772+74.524 RT.

PAVEMENT MARKING SHEETS (2)

PAVEMENT MARKING DETAILS - SR 12 B.O.P TO STA. 1770+00
PAVEMENT MARKING DETAILS - SR 12 STA. 1770+00 TO E.O.P.

TRAFFIC CONTROL SHEETS (5)

CONSTRUCTION SIGNING
TRAFFIC CONTROL PLAN - NARRATIVE
TRAFFIC CONTROL PLAN - SRI2 MEDIUM
TRAFFIC CONTROL PLAN - OUTSIDE LANE CLOSURE
TRAFFIC CONTROL PLAN - SRI2 LANE SHIFT

SPECIAL DESIGN SHEETS (18)

MISCELLANEOUS CONSTRUCTION DETAILS - INLET CAP, DRIVEWAY DETAIL
MISCELLANEOUS CONSTRUCTION DETAILS
MISCELLANEOUS CONSTRUCTION DETAILS
MISCELLANEOUS CONSTRUCTION DETAILS
VEGETATION SCHEDULE

RIGHT-OF-WAY MARKERS COORDINATES
EASEMENT COORDINATES

PLAN VIEW - B.O.P. TO STA. 1751+60
PLAN VIEW - STA. 1751+60 TO STA. 1757+60
PLAN VIEW - STA. 1757+60 TO STA. 1763+60
DRAINAGE PROFILES - HWY 12
PLAN VIEW - STA. 1763+60 TO STA. 1769+60
PLAN VIEW - STA. 1769+60 TO STA. 1775+60
PLAN VIEW - S. MONTOMERY ST. / MS HWY 12
DRAINAGE PROFILES - HWY 12
PLAN VIEW - STA. 1775+60 TO STA. 1781+60
PLAN VIEW - STA. 1781+60 TO STA. 1787+60
PLAN VIEW - BLACKJACK RD AND SPRING ST / MS HWY 12

FG-1 40
FG-2 41
FG-3 42

PM-1 43
PM-2 44

DCS-1 45
TC-NAR 46
TC-1 47
TC-2 48
TC-3 49

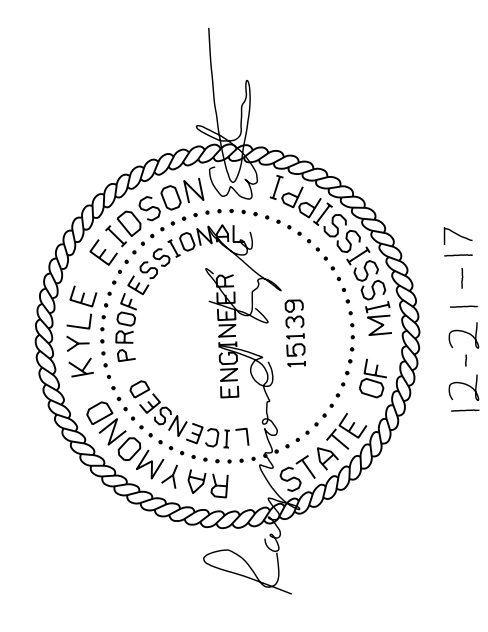
MCD-1 50
MCD-2 51
MCD-3 52
MCD-4 53
VS-1 54

RWM-1 55
REC-1 56

ECP3 57
ECP4 58
ECP5 59
ECP5A 60
ECP6 61
ECP7 62
ECP7A 63
ECP7B 64
ECP8 65
ECP9 66
ECP9A 67

NEEL-SCHAFFER

PS & E PLANS-DATE: 9-13-2017	
FMS CON. # 106863-303000	
REVISIONS	
DATE	SHEET NO. BY
12/21/17	16, 26, 2001, 2023, 3017 DMM



12-21-17

MISSISSIPPI DEPARTMENT OF TRANSPORTATION

DETAILED INDEX

COUNTY: OK TIBBEHA
PROJ. NUM.: HSIP-0018-03(024)

WORKING NUMBER: DI-1
SHEET NUMBER: 2

FILENAME: DI.DGN
DESIGN TEAM: NEEL-SCHAFFER/CHECKED

DATE	

ADDENDUM

STATE	PROJECT NO.
MISS	HSIP-0018-03(024)

SUMMARY OF QUANTITIES (SHEET 4)

PAY ITEM NO.	PAY ITEM	UNIT	OKTIBBEHA : 106863-303000	
			Prelim	Final
637-C030	Traffic Signal Conduit, Underground, Type 4, 3"	LF	235	
637-D001	Traffic Signal Conduit, Underground Drilled or Jacked, Rolled Pipe, 1"	LF	75	
637-D003	Traffic Signal Conduit, Underground Drilled or Jacked, Rolled Pipe, 3"	LF	735	
637-D004	Traffic Signal Conduit, Underground Drilled or Jacked, Rolled Pipe, 4"	LF	350	
637-I001	Traffic Signal Conduit Bank, Underground, Drilled or Jacked, Rolled Pipe, 2 @ 2"	LF	6,490	
637-I002	Traffic Signal Conduit Bank, Underground, Drilled or Jacked, Rolled Pipe, 2"	LF	1,160	
639-B001	Optical Detector	EA	16	
639-C001	Multimode Phase Selector	EA	4	
639-E001	Optical Detector Cable	LF	2,290	
641-A002	Signal Stop Bar Radar Detection, 1 Sensor, Type 2	EA	16	
641-B002	Signal Advanced Radar Detection, 1 Sensor, Type 2	EA	8	
641-C001	ITS Radar Detection, 1 Sensor	EA	2	
641-D001	Radar Detection Communication Cable	LF	2,950	
645-B001	Accessible Pedestrian Detection Assembly	EA	2	
647-A001	Removal of Existing Traffic Signal Equipment	LS	1	
907-650-A002	On Street Video Equipment, Fixed Type	EA	11	
907-650-A003	On Street Video Equipment, PTZ Type	EA	3	
653-A002	Traffic Sign, Type III	SF	43	
653-B003	Street Name Sign, Type III	SF	104	
660-A004	Equipment Cabinet, Type C	EA	1	
907-661-A004	Fiber Optic Cable, 72 SM	LF	6,315	
907-661-B002	Fiber Optic Drop Cable, 12 SM	LF	1,350	
907-663-A001	Network Switch, Type A	EA	3	
907-663-A002	Network Switch, Type B	EA	2	
907-663-A005	Network Switch, Type E	EA	1	
907-666-A001	Bluetooth Detection System, Type A	EA	2	
699-A001	Roadway Construction Stakes	LS	1	
815-D001	Concrete Slope Paving	CY	28	

- ① INCLUDES ALL BRACKETS AND HARDWARE REQUIRED TO MOUNT SIGN TO MAST ARM.
- ② PEDESTRIAN PUSHBUTTONS SHALL BE BLACK IN COLOR AND BE ACCESSIBLE PEDESTRIAN SYSTEM (APS), REMOTE CONTROL MODULE (CONFIGURATOR - IF SUPPLIED) TO REMAIN IN CONTROLLER CABINET.
- ③ PAY ITEM FOR DETECTORS SHALL INCLUDE ALL MATERIALS, EQUIPMENT, LABOR, AND INCIDENTALS NECESSARY TO INSTALL A COMPLETE AND OPERATIONAL SYSTEM. POWER/COMMUNICATION CABLING SHALL BE MEASURED UNDERGROUND HORIZONTALLY ALONG THE CONDUIT ONLY IN THE HORIZONTAL PLANE. NO ADDITIONAL QUANTITY SHALL BE ADDED FOR DEPTH OR CHANGE IN ELEVATION. THIS CABLE SHALL BE PAID FOR FROM THE CONTROLLER TO THE MAST ARM. THE CABLE SHALL ALSO BE MEASURED VERTICALLY ALONG THE MAST ARM SHAFT (TYPICALLY 15' TO 20' DEPENDING ON MOUNTING HEIGHT). CABLE REQUIRED HORIZONTALLY ALONG THE MAST ARM SHALL BE COST ABSORBED. CONTRACTOR SHALL REMOVE ALL EXISTING SIGNAL HEADS, POLES, ARMS, POLE AND CABINET FOUNDATIONS, PULLBOXES, AND REMOVAL OF ALL EXISTING ELECTRICAL CABLE. CONTRACTOR SHALL COORDINATE THE DELIVERY OF RETAINED EQUIPMENT TO THE CITY OF STARKVILLE. STARKVILLE UTILITIES (SU). RETAINED EQUIPMENT INCLUDES SIGNAL HEADS, SIGNS, DETECTION EQUIPMENT, CABINET AND INTERNAL COMPONENTS INCLUDING CONFLICT MONITOR AND CONTROLLER.
- ⑤ ESTIMATED QUANTITY FOR FUTURE WATER AND ELECTRICITY ACCESS TO MEDIAN ISLANDS
- ⑥ ALL CCTV CAMERAS SHALL BE DIGITAL (IP ADDRESSABLE) AND CONNECTED TO THE MDOT FIBER. INCLUDES ALL EQUIPMENT NECESSARY FOR A COMPLETE AND OPERABLE UNIT. CABLES REQUIRED TO SUPPLY POWER, VIDEO, AND/OR CONTROL WILL NOT BE MEASURED FOR SEPARATE PAYMENT AND SHALL BE COST ABSORBED.
- ⑦ ALL DETECTION DEVICES (ITS RDS, ITS BDS, SRDS) SHALL BE IP ADDRESSABLE AND CONNECTED TO THE MDOT FIBER.
- ⑧ TO PROVIDE SYNCHRONIZATION WITH THE WEST PROJECT, CONTRACTOR SHALL SUPPLY ITERIS VANTAGE VELOCITY BLUETOOTH DETECTION SYSTEM. BLUETOOTH DETECTION UNITS SHALL UTILIZE EXISTING BLUETOOTH DETECTION SYSTEM SERVER SUPPLIED IN THE WEST PROJECT.
- ⑨ TO PROVIDE SYNCHRONIZATION WITH THE WEST PROJECT, CONTRACTOR SHALL SUPPLY CISCO IE-4010-16S12P ETHERNET SWITCH, 4010 SERIES FOR THE TYPE E NETWORK SWITCH.
- ⑩ TO PROVIDE SYNCHRONIZATION WITH THE WEST PROJECT, CONTRACTOR SHALL SUPPLY AUTOSCOPE RTMS Sx-300 FOR THE ITS RADAR DETECTION.
- ⑪ TO PROVIDE SYNCHRONIZATION WITH THE WEST PROJECT, CONTRACTOR SHALL SUPPLY TKH SIOURA MODEL HSD820H3PRH DOME CAMERA, PTZ FOR THE PTZ CAMERA.
- ⑫ CONDUIT SHALL BE MEASURED FROM CENTER TO CENTER OF PULLBOX AND/OR FOUNDATION. MEASUREMENT OF UNDERGROUND CONDUIT SHALL BE ONLY IN THE HORIZONTAL PLANE. NO ADDITIONAL QUANTITY SHALL BE ADDED FOR DEPTH OR CHANGE IN ELEVATION. TRACER WIRE, MARKING TAPE, AND CONDUIT DETECTION WIRE ARE NOT REQUIRED, UNLESS SPECIFICALLY CALLED OUT IN THE PLANS.
- ⑬ CONTRACTOR IS TO ESTABLISH COMMUNICATIONS BETWEEN ALL INSTALLED SIGNAL AND ITS EQUIPMENT AND THE STATEWIDE TMC (COST ABSORBED). ALL SIGNAL CONTROLLERS CONTAINED WITHIN THIS PROJECT SHALL COMMUNICATE WITH EXISTING MASTER CONTROLLER INSTALLED UNDER WEST PROJECT AT SR 12 & AIRPORT/STARK RD.
- ⑭ POWER/COMMUNICATION CABLING FOR BLUETOOTH DETECTORS SHALL BE COST ABSORBED.



By	Revision
MB	deleted pay item, moved notes
Date	12/21/2017
Design Team	Neel-Schaffner
Checked	
Date	09-08-22
Working Number	SQ-4
Sheet Number	16

**MISSISSIPPI DEPARTMENT OF TRANSPORTATION
SUMMARY OF QUANTITIES**



Proj No: HSIP-0018-03(024)
County: OKTIBBEHA

FILENAME : sq_Final

STATE	PROJECT NO.
MISS.	HSIP-0018-03(024)

ESTIMATED QUANTITIES -- ITS ITEMS

Pay Item Number	Description	Units	ITS-1 SR 12 1747+00 - 1777+00	ITS-2 SR 12 1777+00 - E.O.P.	ITS-3 SR 12 @ S Montgomery	ITS-4 SR 12 @ Spring / Blackjack	ITS-5 SR 12 @ Russell	Grand Total
	ITS ITEMS							
636-B051	Electric Cable, Underground in Conduit, THHN, AWG #6, 3 Conductor	LF					15	15 *
637-A009	Pull Box Enclosure, Type 2, Tier 22	EA	1					1 *
637-A013	Pull Box Enclosure, Type 4, Tier 22	EA	1					1 *
637-A015	Pull Box Enclosure, Type 5, Tier 22	EA	2	5				7
637-C026	Traffic Signal Conduit, Underground, Type 4, 1"	LF					15	15 *
637-C028	Traffic Signal Conduit, Underground, Type 4, 2"	LF		20				20 *
637-I001	Traffic Signal Conduit Bank, Underground, Drilled or Jacked, Rolled Pipe, 2 @ 2"	LF	3015	3475				6490
637-I002	Traffic Signal Conduit Bank, Underground, Drilled or Jacked, Rolled Pipe, 2"	LF	1140	20				1160
641-C001	ITS Radar Detection, 1 Sensor	EA				1	1	2
641-D001	Radar Detection Communication Cable	LF				40	45	85 *
907-650-A002	On Street Video Equipment, Fixed Type	EA			3	4	4	11
907-650-A003	On Street Video Equipment, PTZ Type	EA			1	1	1	3
660-A004	Equipment Cabinet, Type C	EA					1	1
907-661-A004	Fiber Optic Cable, 72 SM	EA	3015	3300				6315
907-661-B002	Fiber Optic Drop Cable, 12 SM	EA	1170	180				1350
907-663-A002	Network Switch, Type B	EA					1	1 *
907-663-A005	Network Switch, Type E	EA					1	1
907-666-A001	Bluetooth Detection System, Type A	EA				1	1	2

- NOTES:**
- SEE SUMMARY OF QUANTITIES (SQ-3 & SQ-4) FOR PAY ITEM FOOTNOTES.
 - SEE PROJECT NOTES (PN-1) FOR PROJECT SPECIFIC NOTES.
 - * - THESE PAY ITEMS SHOW UP ON BOTH THE TRAFFIC SIGNAL AND ITS ESTIMATED QUANTITY SHEETS.

MISSISSIPPI DEPARTMENT OF TRANSPORTATION	
ESTIMATED QUANTITIES	
ITS ITEMS	
BY	DATE
DM	12/21/17
REVISION	DELETED PAY ITEM
COUNTY: OK TIBBEHA	
PROJ. NUM.: HSIP-0018-03(024)	
FILENAME: RECAP.DGN	WORKING NUMBER
DESIGN: TEAMNEEL-SCHAFFER/CHECKED	EQ-10
DATE	SHEET NUMBER
	26

UTILITIES

- EXISTING UNDERGROUND UTILITIES SHOWN ON THE DRAWINGS BASED UPON THE BEST INFORMATION AVAILABLE TO THE ENGINEER. THE CONTRACTOR SHALL BE RESPONSIBLE FOR MAKING HIS OWN INDEPENDENT INVESTIGATIONS, INCLUDING SUB-SURFACE INVESTIGATIONS AS MAY BE NECESSARY TO LOCATE UTILITIES WITHIN THE PROJECT LIMITS. IN ADDITION, THE CONTRACTOR SHALL NOTIFY MDOT DISTRICT ONE MAINTENANCE PERSONNEL AT LEAST TWO WEEKS IN ADVANCE OF WORK WITHIN EACH AREA, SO THAT MDOT UTILITIES CAN BE FIELD LOCATED.
- THE CONTRACTOR SHALL MAKE THE APPLICATION FOR POWER SERVICE, COORDINATING WITH MDOT AND LOCAL OFFICIALS IN ADVANCE OF REQUIRING THE ELECTRICAL SERVICES. IF ELECTRICAL SERVICE REQUIRES A SERVICE METER TO BE INSTALLED, CONTRACTOR TO CONTACT THE ELECTRIC UTILITY OWNER. ANY INSTALLATIONS OF AERIAL POWER CIRCUITS, POWER PANELS OR WOOD POLES TO PROVIDE POWER SERVICE SHALL MEET LOCAL EPA REQUIREMENTS AND BE COST ABSORBED. CONTRACTOR SHALL ESTABLISH POWER SERVICE IN HIS OR HER BILLING ADDRESS, AND SHALL PAY ALL UTILITY CONNECTION CHARGES AND CHARGES FOR SERVICE UNTIL FINAL PROJECT ACCEPTANCE. THIS ALSO INCLUDES ANY TEMPORARY SIGNALS THAT MAY BE REQUIRED. ALL TRANSFORMERS AND/OR TERMINAL BLOCKS NEEDED AT THE POWER SERVICE POINT OR AT THE DEVICE LOCATIONS SHALL BE COST ABSORBED IN OTHER ITEMS.
- CONTRACTOR SHALL BE RESPONSIBLE FOR ALL UTILITY MAKE-READY COST INCURRED TO PROVIDE POWER AND COMMUNICATION SERVICES TO THE EQUIPMENT, NOT A SEPARATE PAY ITEM (COST ABSORBED UNDER OTHER SIGNAL / ITS ITEMS). THE CONTRACTOR SHALL BE RESPONSIBLE FOR MAKING AN INDEPENDENT INVESTIGATION INTO UTILITY MAKE-READY COST FOR BIDDING PURPOSES.
- POWER SERVICES REQUIRED TO BE PROVIDED BY STARKVILLE UTILITIES (SU). FOR THEIR INSTALLATIONS, THE SIGNAL CONTRACTOR WILL RUN CONDUIT TO THE BASE OF THE POWER SERVICE POLE AND INSTALL A TYPE 1 (STEEL) 90. CONTRACTOR WILL SUPPLY SU RIGID CONDUIT AND WEATHER HEAD FOR THEM TO INSTALL UP THE SERVICE POLE. CONTRACTOR TO PULL ALL WIRE FROM THE METER BASE UP THE SERVICE POLE AND LEAVE A PIGTAIL OUT THE WEATHER HEAD FOR SU TO CONNECT THE SERVICE. ALL MATERIAL TO BE SUPPLIED BY THE CONTRACTOR AND INCLUDED IN THE APPROPRIATE PAY ITEMS, NO PAYMENT FOR VERTICAL RUNS. CONTACT FOR STARKVILLE UTILITIES IS JASON HORNER (662-268-7973).
- NO COMMUNICATION SERVICES ARE REQUIRED AT FIBER TERMINATION CABINET AT SR 12 AND RUSSELL STREET (SEE ITS-5). THIS CABINET IS REQUIRED FOR FUTURE CITY OF STARKVILLE AND MSU FIBER LINES.

TRAFFIC SIGNALS

- ANY ADJUSTMENTS OF SIGNAL HEADS, ADJUSTMENT OF SIGNAL TIMINGS OR OTHER REQUIREMENTS TO BETTER MAINTAIN TRAFFIC OPERATION TO BE PERFORMED BY SIGNAL CONTRACTOR (COST ABSORBED). SIGNAL CONTRACTOR IS ALSO RESPONSIBLE FOR INSTALLATION OF TEMPORARY SIGNAL SYSTEMS AT SR 12 AND JACKSON STREET, AT SR 12 AND S MONTGOMERY STREET, AND AT SR 12 AND SPRING STREET / BLACKJACK ROAD. THIS IS TO BE PAID UNDER 619-H1001, TRAFFIC SIGNALS - LUMP SUM (SEE TEMP-1, TEMP-2, & TEMP-3). TEMPORARY SIGNALS REQUIRE SIGNAL STOP BAR RADAR DETECTION (INCLUDED UNDER PAY ITEM 619-H1001).
- ALL TRAFFIC SIGNAL CONTROLLERS SHALL BE NEW, INCLUDING MMU2. GPS CLOCK NOT REQUIRED. THEY SHALL BE THE CURRENT VERSION OF SIEMENS EAGLE TRAFFIC SIGNAL CONTROLLERS WITH SEPAC SOFTWARE, ETHERNET READY, AND COMPATIBLE WITH MDOT'S EXISTING TRAFFIC SIGNAL MANAGEMENT SOFTWARE. ALL TRAFFIC SIGNAL CONTROLLER FIRMWARE SHALL BE CAPABLE OF DELAYING THE ONSET OF THE FLASHING YELLOW ARROW. SIGNAL CONTROLLER SHALL BE ECOMM COMPATIBLE. ALL MMU'S SHALL BE ETHERNET READY, 16 CHANNEL, AND CAPABLE OF RUNNING 12 DIFFERENT MODES OF FLASHING YELLOW ARROW OPERATION.
- TRAFFIC SIGNAL CONTROLLER CABINET SHALL HAVE A 16 LOAD BAY FACILITY, REAR ACCESS DOOR, LAPTOP TRAY, AND DUAL POSITION INTERNAL LED LIGHTING. ALL TRAFFIC SIGNAL CONTROLLER CABINETS SHALL HAVE A 5 POSITION CARD RACK AND ONE 175 WATT MINIMUM POWER SUPPLY AND 4 AVAILABLE SLOTS. CONTROLLER CABINET SHALL HAVE A 30 AMP MAIN BREAKER AND A THIRD AUXILIARY BREAKER IF A CAMERA PANEL IS CALLED FOR IN THE PLANS. PAY ITEM FOR SOLID STATE TRAFFIC ACTUATED CONTROLLER SHALL INCLUDE ALL MATERIALS, INCIDENTALS, AND LABOR NECESSARY TO INSTALL A COMPLETE AND OPERATIONAL UNIT.

PROJECT NOTES FOR TRAFFIC SIGNALS AND ITS INSTALLATIONS

TRAFFIC SIGNALS (CON'T.)

- POWER SERVICE PANELS SHALL BE GROUND MOUNTED PEDESTALS (SEE TSD-12), AS SPECIFIED IN SECTION 722.13.3, EXCEPT THEY SHALL BE NON-PAINTED ALUMINUM, RATHER THAN LIGHT GREEN. GROUND MOUNTED PEDESTALS SHALL BE COST ABSORBED.
- TRAFFIC SIGNAL MAST ARM AND PEDESTAL POLES SHALL BE HOT DIPPED GALVANIZED WITH DARK BRONZE FINISH (FINISH COLOR TO MATCH WEST PROJECT POLES). DESIGN WIND SPEED FOR TRAFFIC SIGNAL POLES SHALL BE 90 MPH, ACCORDING TO THE 2013 AASHTO SPECIFICATIONS. USE FATIGUE CATEGORY II, USE 50-YEAR DESIGN SERVICE LIFE. DO NOT CONSIDER GALLOPING OR TRUCK-INDUCED GUSTS. ICE LOADS INCLUDED. REINFORCED HANDHOLE SHALL BE A MINIMUM NOMINAL SIZE OF 4" X 26".
- TRAFFIC SIGNAL MAST ARM POLES WITH LUMINAIRES SHALL HAVE LED FIXTURES. LUMINAIRE AND PHOTOELECTRIC CONTROL SHALL REPLACE 250W HID. 120-277 VOLT. FIXTURE SHALL HAVE A LUMEN PER WATT (LPW) RATIO OF 100 OR GREATER. 4000K LED COLOR TEMPERATURE WITH 7-PIN PHOTOCCELL RECEPTACLE, GRAY IN COLOR. MANUFACTURER TO PROVIDE 10 YR WARRANTY WITH DATE PERMANENTLY STAMPED OR LABELED IN FIXTURE. GENERAL ELECTRIC PART #ERLH011B140AGRAY, HOWARD LIGHTING PART #L402L100W40KT310GRM, AMERICAN ELECTRIC PART #ATBMBMVOLTR3P7, OR EATON VERD-G-A02-D-U-T3-4N7-10K-AP ONLY. FIXTURE AND PHOTO CELL TO BE PROVIDED BY THE CONTRACTOR. (COST ABSORBED). VERTICAL RUNS OF LUMINAIRE CABLE SHALL BE COST ABSORBED.
- TRAFFIC SIGNAL HEADS SHALL BE BLACK IN COLOR WITH BLACK BACK PLATES.
- PEDESTRIAN HEADS AND PUSHBUTTONS SHALL BE BLACK IN COLOR. PUSHBUTTON WITH SIGN TO BE PAID SEPARATELY. PEDESTRIAN PUSHBUTTONS SHALL BE ACCESSIBLE PEDESTRIAN SYSTEM (APS). REMOTE CONTROL MODULE (CONFIGURATOR - IF SUPPLIED) TO REMAIN IN CONTROLLER CABINET.
- UNDERGROUND SIGNAL CABLE SHALL BE MEASURED UNDERGROUND HORIZONTALLY ALONG THE CONDUIT ONLY IN THE HORIZONTAL PLANE. NO ADDITIONAL QUANTITY SHALL BE ADDED FOR DEPTH OR CHANGE IN ELEVATION. AERIAL SIGNAL CABLE SHALL BE MEASURED VERTICALLY ALONG THE MAST ARM POLE AND HORIZONTALLY ALONG THE MAST ARM.
- ALL PULLBOXES SHALL BE TIER 22.
- CONDUIT SHALL BE MEASURED FROM CENTER TO CENTER OF PULLBOX AND/OR FOUNDATION. MEASUREMENT OF UNDERGROUND CONDUIT SHALL BE ONLY IN THE HORIZONTAL PLANE. NO ADDITIONAL QUANTITY SHALL BE ADDED FOR DEPTH OR CHANGE IN ELEVATION. TRACER WIRE, MARKING TAPE, AND CONDUIT DETECTION WIRE ARE NOT REQUIRED, UNLESS SPECIFICALLY CALLED OUT IN THE PLANS.
- SIGNAL DETECTION SHALL BE RADAR. DETECTION SYSTEMS REQUIRE BOTH STOP BAR AND ADVANCE DETECTION. PAY ITEM FOR DETECTORS SHALL INCLUDE ALL MATERIALS, EQUIPMENT, LABOR, AND INCIDENTALS NECESSARY TO INSTALL A COMPLETE AND OPERATIONAL SYSTEM. ALL NECESSARY POWER/COMMUNICATION CABLING TO BE COST ABSORBED. TSI PLANS SHOW A GENERIC LAYOUT FOR RADAR DETECTION. DETECTOR MAY BE RELOCATED PER TYPE OF EQUIPMENT SUPPLIED. NO EXTRA PAY FOR MOVING OF DETECTORS. CONTRACTOR SHALL HAVE MANUFACTURER CERTIFIED PERSON OR SUPPLIER REPRESENTATIVE ON SITE DURING INSTALLATION.
- CONTRACTOR SHALL REMOVE ALL EXISTING SIGNAL EQUIPMENT THAT IS NO LONGER REQUIRED. THIS INCLUDES SIGNAL HEADS, POLES, ARMS, POLE AND CABINET FOUNDATIONS, PULLBOXES, AND REMOVAL OF ALL EXISTING ELECTRICAL CABLE. CONTRACTOR SHALL COORDINATE THE DELIVERY OF RETAINED EQUIPMENT TO THE CITY OF STARKVILLE - STARKVILLE UTILITIES (SU). RETAINED EQUIPMENT INCLUDES SIGNAL HEADS, SIGNS, DETECTION EQUIPMENT, CABINET AND INTERNAL COMPONENTS INCLUDING CONFLICT MONITOR AND CONTROLLER. SEE TEMPORARY SIGNAL PLANS FOR RETAINED EQUIPMENT ITEMS. DELIVERY AND STORAGE OF REMOVED EQUIPMENT IS NOT A SEPARATE PAY ITEM AND SHALL BE PAID FOR UNDER PAY ITEM 647-A001.
- NETWORK SWITCHES IN CONTROLLER CABINETS TO BE CONNECTED TO FIBER OPTIC CABLE. ALL SPLICES AND CONNECTIONS TO BE COST ABSORBED.
- ALL SIGNALS SHOULD BE INTERCONNECTED TO EXISTING MASTER CONTROLLER INSTALLED IN THE WEST PROJECT AT SR 12 AND STARK ROAD / AIRPORT ROAD. (COST ABSORBED).
- SIGNALS TIMINGS WILL BE FURNISHED BY MDOT, SUPPLIED BY NEEL-SCHAFFER.
- SEE WORKING NUMBER TSD-1 FOR ADDITIONAL GENERAL NOTES.

ITS EQUIPMENT

- MDOT RECENTLY COMPETED A PROJECT OF TEN INTERSECTIONS ON SR 12 TO THE WEST OF THIS PROJECT (REFERRED TO AS THE WEST PROJECT). THE FOLLOWING LISTED EQUIPMENT SHALL BE REQUIRED TO BE SUPPLIED TO PROVIDE SYNCHRONIZATION WITH THE WEST PROJECT: 641-C001 | ITS RADAR DETECTION, 1 SENSOR | EA - AUTOSCOPE RTMS Sx-300 907-650-A003 | ON STREET VIDEO EQUIPMENT, PTZ TYPE | EA - TKH SIQURA MODEL HSD820H3PRH DOME CAMERA, PTZ 907-663-A005 | NETWORK SWITCH, TYPE E | EA - CISCO IE-4010-16512P ETHERNET SWITCH, 4010 SERIES 907-666-A001 | BLUETOOTH DETECTION SYSTEM, TYPE A | EA - ITERIS VANTAGE VELOCITY
- THE CONTRACTOR SHALL ESTABLISH COMMUNICATIONS BETWEEN ALL INSTALLED SIGNAL AND ITS EQUIPMENT AND THE MDOT STATEWIDE TMC. (COST ABSORBED UNDER OTHER BID ITEMS).
- ALL CCTV CAMERAS SHALL BE DIGITAL (IP ADDRESSABLE) AND CONNECTED TO THE MDOT FIBER. INCLUDES ALL EQUIPMENT NECESSARY FOR A COMPLETE AND OPERABLE UNIT. CABLES REQUIRED TO SUPPLY POWER, VIDEO, AND/OR CONTROL WILL NOT BE MEASURED FOR SEPARATE PAYMENT AND SHALL BE COST ABSORBED.
- ALL DETECTION DEVICES (ITS RDS, ITS BDS, SRDS, AND EXISTING SENSYS WIRELESS VEHICLE DETECTION SYSTEM) SHALL BE IP ADDRESSABLE AND CONNECTED TO THE MDOT FIBER. CONNECTION OF THE EXISTING SENSYS WIRELESS VEHICLE DETECTION SYSTEM AT SR 12 AND RUSSELL STREET SHALL BE COST ABSORBED. BLUETOOTH DETECTION UNITS SHALL UTILIZE EXISTING BLUETOOTH DETECTION SYSTEM SERVER SUPPLIED IN THE WEST PROJECT.
- CONTRACTOR SHALL FIELD VERIFY CAMERA SITES LOCATION AND ORIENTATION FOR COMPLETE COVERAGE OF ROADWAY PRIOR TO INSTALLING CAMERAS, RDS, OR BDS. LOCATIONS AND ORIENTATIONS TO BE APPROVED BY THE PROJECT ENGINEER.
- FIELD LOCATION ADJUSTMENTS MAY BE REQUIRED AT TIME OF EQUIPMENT INSTALLATION DUE TO POTENTIAL CONFLICTS OR OTHER FACTORS THAT WERE UNIDENTIFIABLE DURING THE PROJECT DESIGN PHASE. ANY REQUIRED ADJUSTMENT'S SHALL BE APPROVED BY THE PROJECT ENGINEER.
- AT CAMERA SITES WHERE THE SITE IS LOCATED ON TRAFFIC SIGNAL MAST ARM POLE, GROUND ROD FOR POLE SHALL BE CONNECTED TO GROUND ROD GRID FOR TRAFFIC SIGNAL CONTROLLER CABINET (SEE CCTV-2) WITH AN AWG #10 GREEN WIRE IN CONDUIT, COST SHALL BE ABSORBED. ALL COMMUNICATION AND POWER CABLES FROM TRAFFIC SIGNAL CONTROLLER TO PTZ CAMERA / RDS & BDS DETECTORS TO BE COST ABSORBED.
- ALL FIBER OPTIC PULLBOXES SHALL BE EITHER TYPE 4 OR TYPE 5 AS NOTED ON THE PLANS. EACH BELOW GROUND PULLBOX SHALL INCLUDE ADDITIONAL FIBER CABLE SLACK (SEE SPEC. PROVISION 907-661 FOR DETAILS.) THE ADDITIONAL CABLE SHALL BE COST ABSORBED UNDER APPROPRIATE PAY ITEMS.
- ALL FIBER SPLICES REQUIRED TO CONNECT TRUNK AND DROP CABLE TO NEW AND EXISTING EQUIPMENT SHALL NOT BE A SEPARATE PAY ITEM, BUT SHALL BE ABSORBED UNDER ITEM NOS. 907-661-A OR 907-661-B.
- A TRACER WIRE SHALL BE INSTALLED IN CONDUIT THAT CARRIES FIBER OPTIC AND/OR COMMUNICATION CABLE. CONDUIT THAT CARRIES FIBER OPTIC AND/OR COMMUNICATION CABLE SHALL CONTAIN AN AWG #10 ORANGE TRACER WIRE, COST SHALL BE ABSORBED UNDER PAY ITEM NO. 907-661-A OR 907-661-B.
- PAYMENT FOR SIGNAL CABLE, FIBER OPTIC CABLE, POWER CABLE, COMMUNICATION CABLE, AND CONDUIT SHALL BE MEASURED BASED ON HORIZONTAL MEASUREMENTS, NO ADDITIONAL PAYMENT WILL BE MADE FOR ANY VERTICAL RUNS OR SLACK IN PULLBOXES.
- SEE WORKING NUMBER ITS-GN FOR ADDITIONAL GENERAL NOTES.

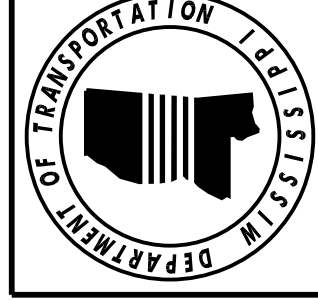
DATE	BY	REVISION
12/21/17		REVISED NOTES

MISSISSIPPI DEPARTMENT OF TRANSPORTATION

PROJECT NOTES

TRAFFIC SIGNALS AND ITS INSTALLATIONS

COUNTY: OK TIBBEHA
 PROJ. NUM.: HSIP-0018-03(024)
 FILENAME: PN.DGN
 WORKING NUMBER: PN-1
 SHEET NUMBER: 2001



GENERAL NOTES:
 1. THE PEDESTAL SHALL BE OF NEMA TYPE 3R RAINPROOF CONSTRUCTION AND SHALL BE UL LISTED AS "ENCLOSED INDUSTRIAL CONTROL EQUIPMENT" (UL 508A). EXTERNAL CONSTRUCTION SHALL COMPLY WITH UL50 REQUIREMENTS AND SHALL BE UNPAINTED ALUMINUM.

2. NOMINAL SIZE OF THE PEDESTAL SHALL BE 48" H X 16" W X 16" D. DIMENSION SHOWN ARE TYPICAL. CONTRACTOR TO VERIFY ALL DIMENSIONS WITH MANUFACTURER PRIOR TO INSTALLATION.

3. PEDESTAL SHALL HAVE A VOLTAGE RATING OR 120V/240V SINGLE PHASE WITH AN AMPERAGE RATING OF 800A.

4. HINGES SHALL BE STAINLESS STEEL AND OF THE CONTINUOUS PIANO HINGE TYPE.

5. THE PEDESTAL MOUNTING BOLTS SHALL NOT BE EXTERNALLY ACCESSIBLE. THE PEDESTAL SHALL BE ABLE TO BE EMBEDDED IN CONCRETE OR USE ANCHOR BOLTS FOR MOUNTING ON CONCRETE BASE. EITHER PEDESTAL MOUNTING BASE OR ANCHOR BOLT KIT SHALL BE REQUIRED FOR INSTALLATION.

6. THE SERVICE PEDESTAL SHALL HAVE THREE SEPARATE ISOLATED SECTIONS FOR METERING EQUIPMENT, UTILITY TERMINATION AND CUSTOMER EQUIPMENT.

7. THE METERING SECTION SHALL BE PAD-LOCKABLE AND SEALABLE AND HAVE A HINGED SWING HOOD WITH AN INTEGRAL HINGED POLYCARBONATE SEALABLE WINDOW FOR ACCESS TO DEMAND METERS. METER SOCKET TYPE SHALL MEET THE REQUIREMENTS OF THE SERVING UTILITY.

8. THE UTILITY TERMINATION SECTION SHALL BE PAD-LOCKABLE AND SEALABLE AND SHALL HAVE A STAINLESS STEEL HANDLE PROVIDED ON A LIFT-OFF COVER. SUFFICIENT CLEARANCE SHALL BE PROVIDED FOR A 4- INCH DIAMETER CONDUIT FOR UTILITY CABLES ENTRANCE. UTILITY LANDING LUGS SHALL BE UL LISTED AND SHALL ACCOMMODATE #6 350 KCMIL CONDUCTORS.

9. THE CUSTOMER COMPARTMENT DOOR SHALL BE HINGED ON THE LEFT HAND SIDE. A STAINLESS PAD- LOCKABLE HASP SHALL BE PROVIDED TO SECURE CUSTOMER COMPARTMENT. AN OUTDOOR RATED HEAVY DUTY COMBINATION LOCK SHALL BE PROVIDED TO LOCK THE CUSTOMER COMPARTMENT DOOR. A DOOR KEEPER SHALL BE PROVIDED TO KEEP THE DOOR IN AN OPEN POSITION. A PRINT POCKET SHALL BE PROVIDED ON THE INSIDE OF THE DOOR IN A WEATHERPROOF SLEEVE. REQUIRED UL LABELING SHALL BE LOCATED ON THE INSIDE OF THE CUSTOMER DOOR. DISTRIBUTION AND CONTROL EQUIPMENT SHALL BE BEHIND AN INTERNAL DEAD-FRONT DOOR WITH A QUARTER-TURN SECURING LATCH AND SHALL BE HINGED TO OPEN MORE THAN 90 DEGREES. THE DEAD-FRONT DOOR SHALL BE HINGED ON THE SAME SIDE AS THE CUSTOMER SECTION DOOR.

10. ALL DISTRIBUTION AND CONTROL EQUIPMENT SHALL BE FACTORY WIRED USING 600 VOLT WIRE SIZED TO NEC AND UL REQUIREMENTS.

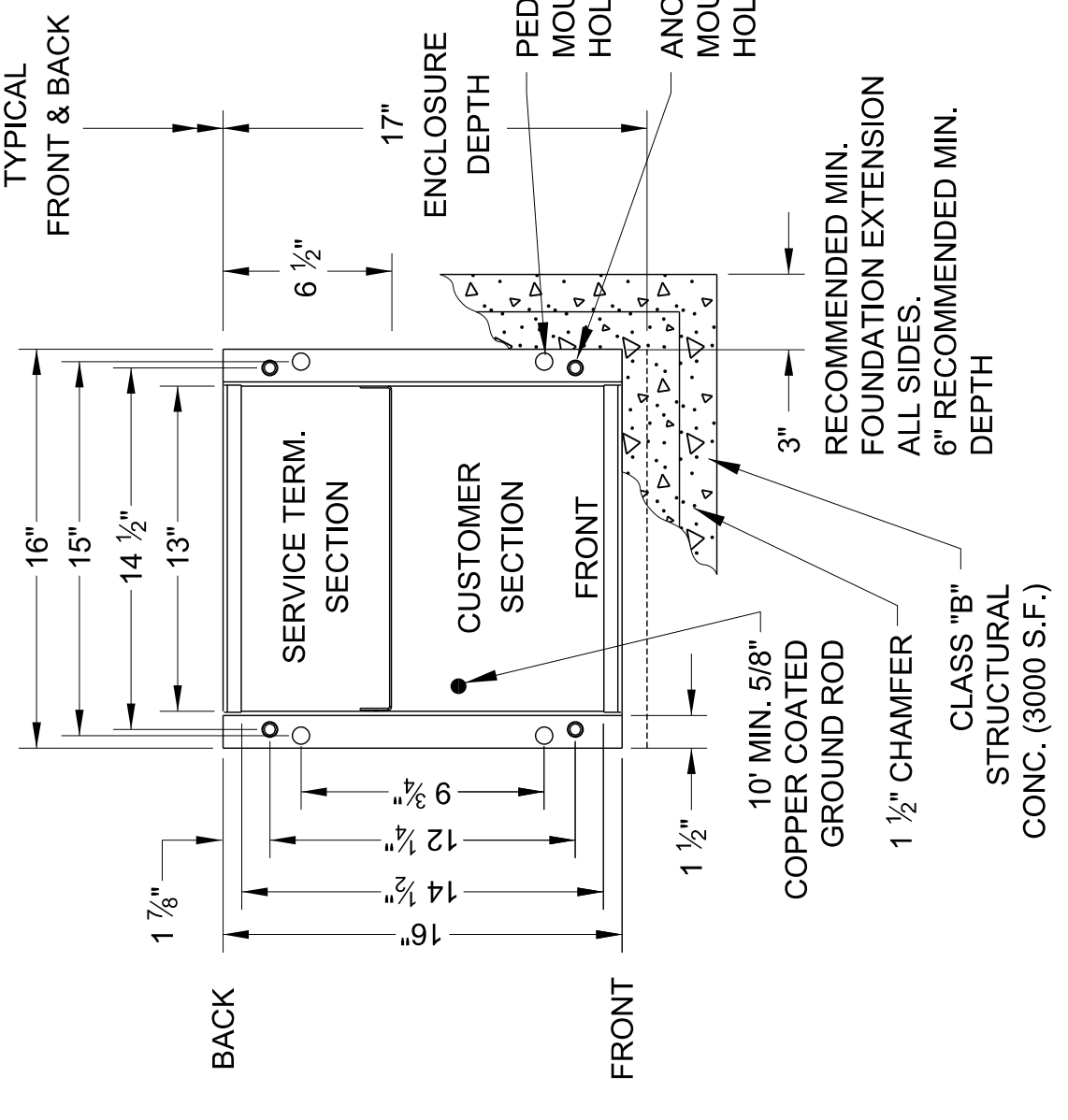
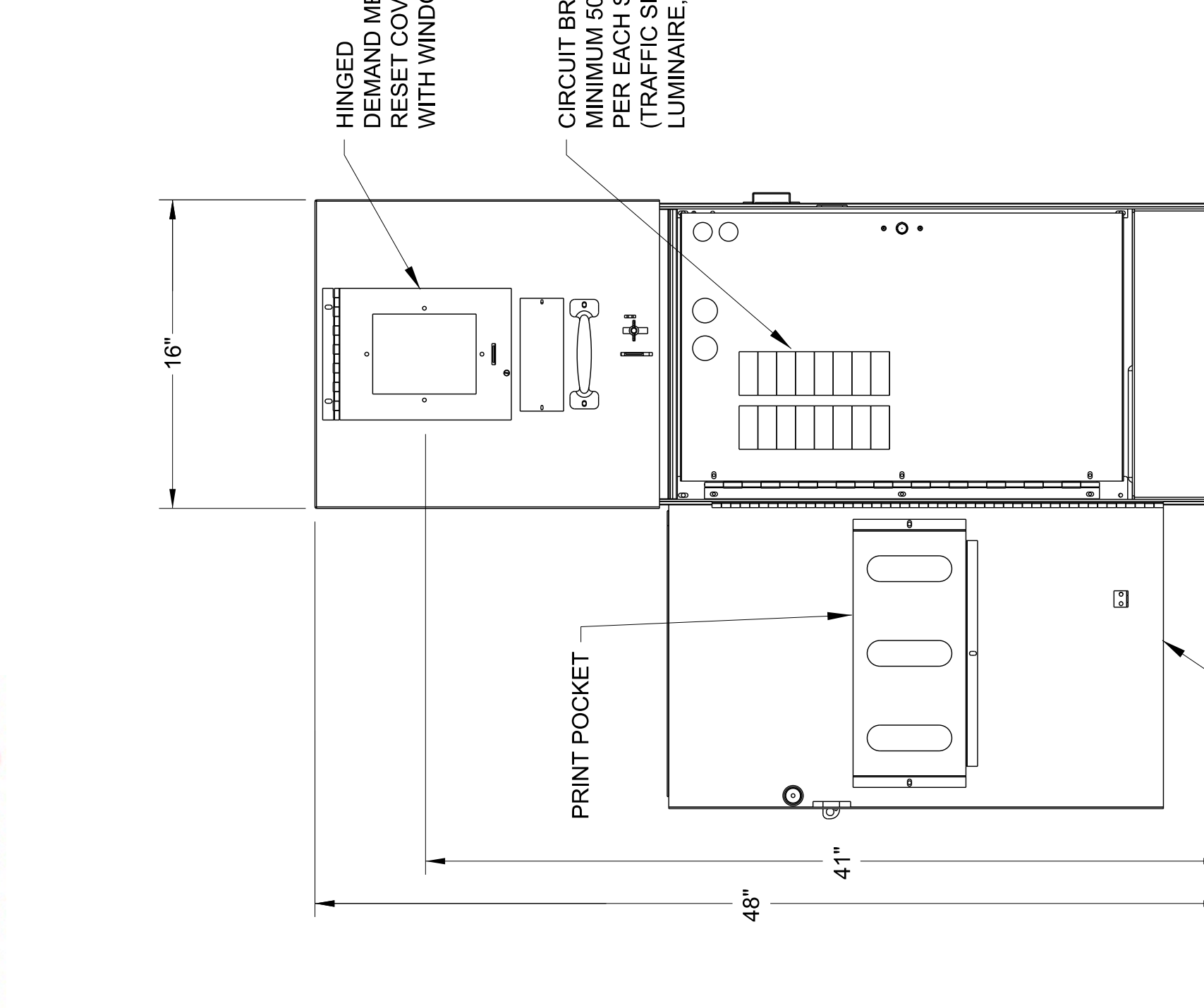
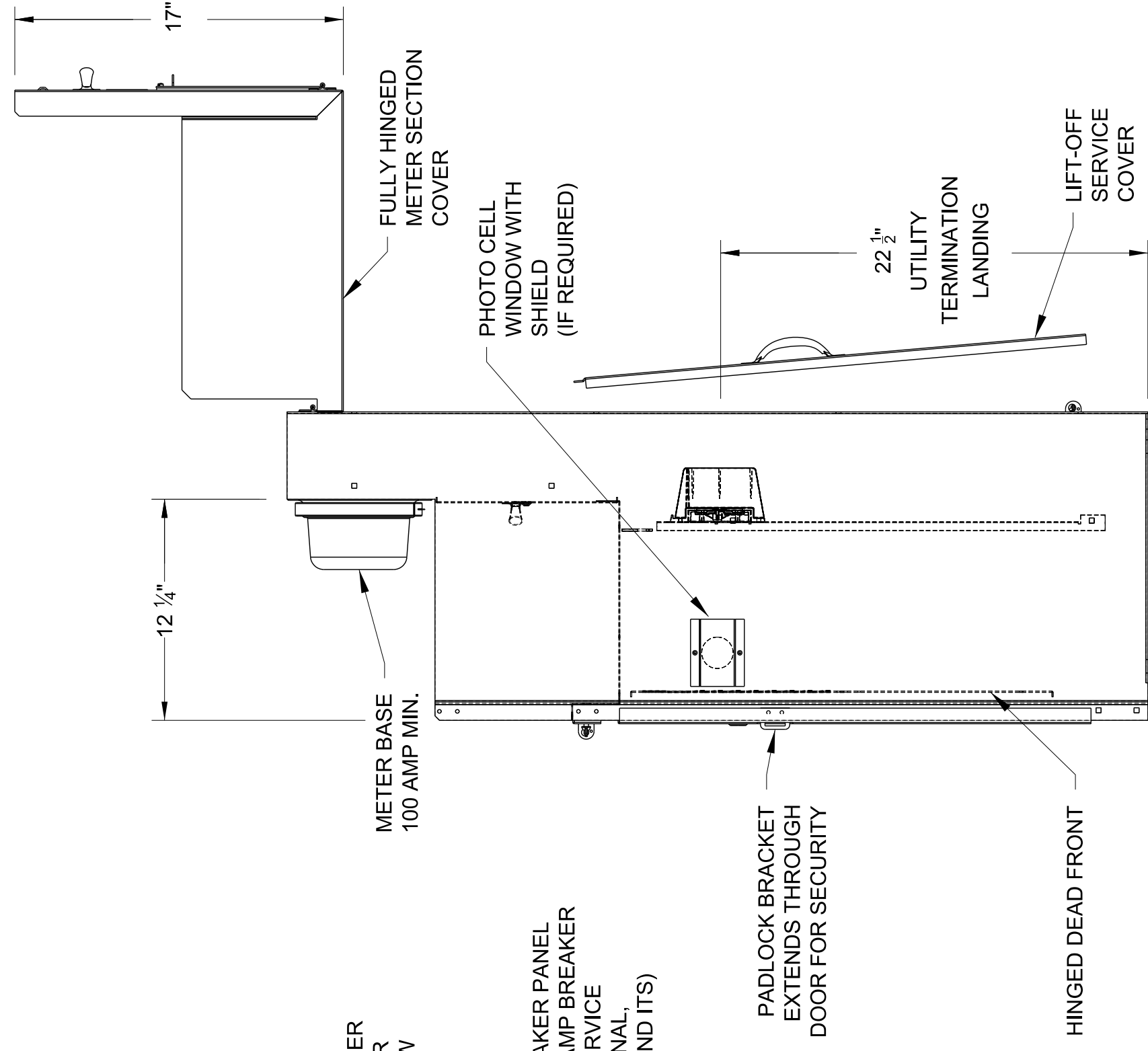
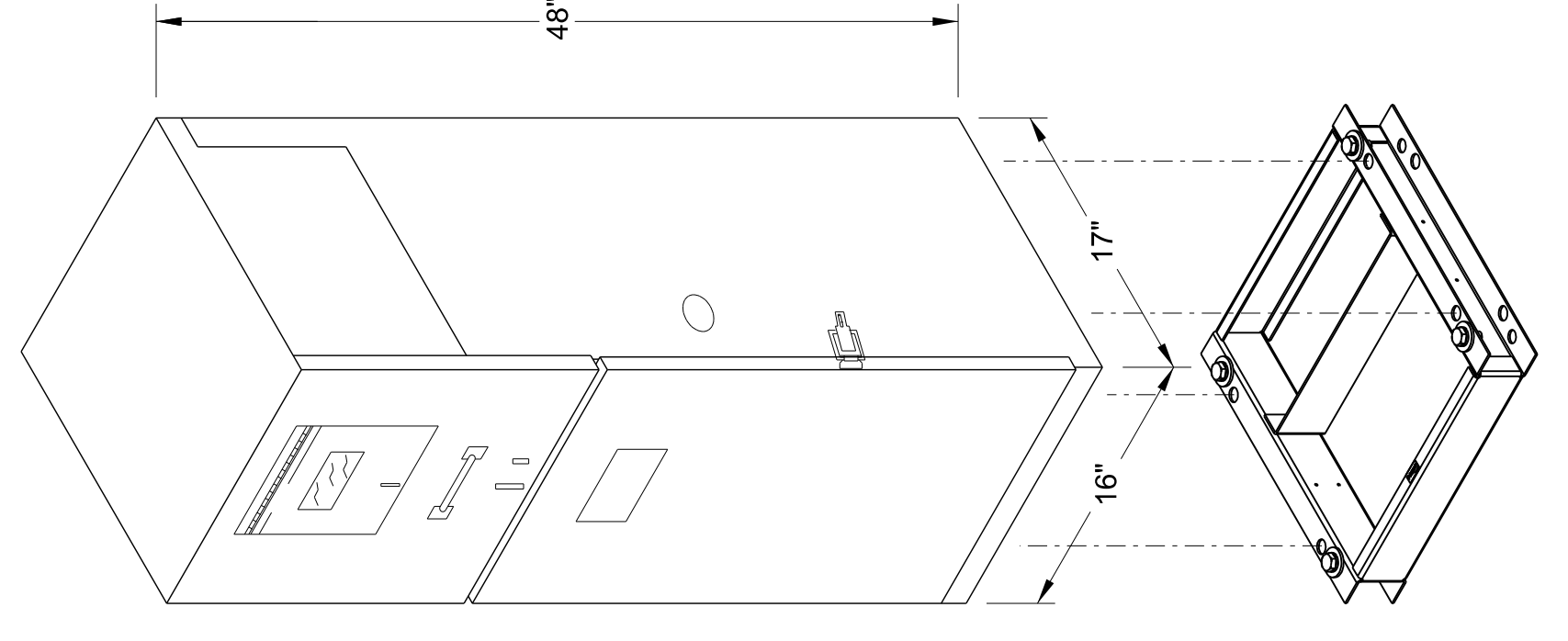
11. THE SERVICE PEDESTAL SHALL BE RATED FOR OPERATION AT 10K MINIMUM (AIC) AMPS INTERRUPTING CAPACITY. THE PROVIDED DOCUMENTATION SHALL LIST CIRCUIT BREAKER COMBINATIONS AND THOSE TO BE USED FOR DE-RATED OPERATION FOR SERIES RATINGS. CIRCUIT BREAKERS SHALL BE PERMANENTLY LABELED WITH ENGRAVED NAME PLATES.

12. THE PANEL SHALL CONTAIN AS A MINIMUM A 50 AMP BREAKER PER EACH SERVICE (TRAFFIC SIGNAL, LUMINAIRE, AND ITS IF ITS EQUIPMENT IS INSTALLED ON PROJECT).

13. PHOTO CELL SHALL BE REQUIRED IF THE PROJECT WILL INSTALL LUMINAIRES AND/OR ILLUMINATED STREET NAME SIGNS.

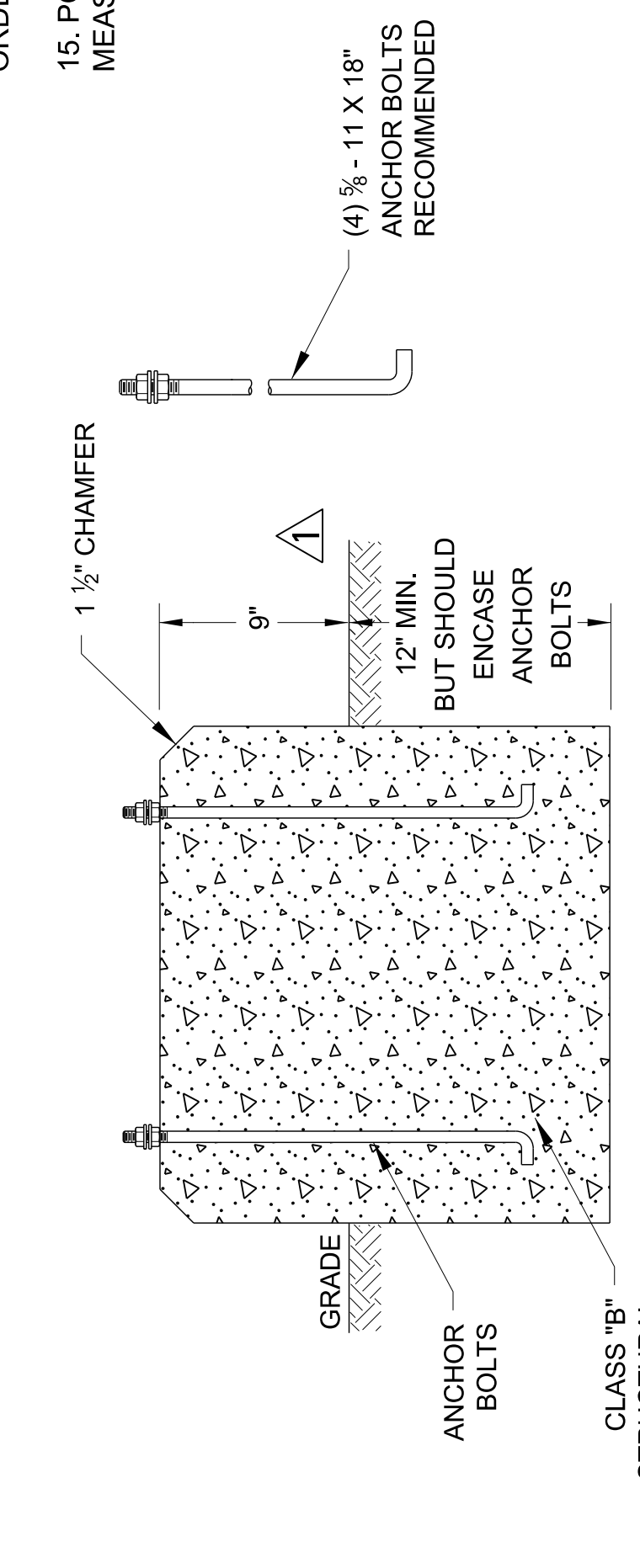
14. THE SERVING UTILITY SHALL BE CONSULTED FOR REQUIREMENTS BEFORE ORDERING OR INSTALLING EQUIPMENT.

15. POWER SERVICE PEDESTAL AS SPECIFIED IN THE PROJECT PLANS, WILL BE MEASURED AS A UNIT PER EACH.



MOUNTING BASE DETAIL

NOT TO SCALE



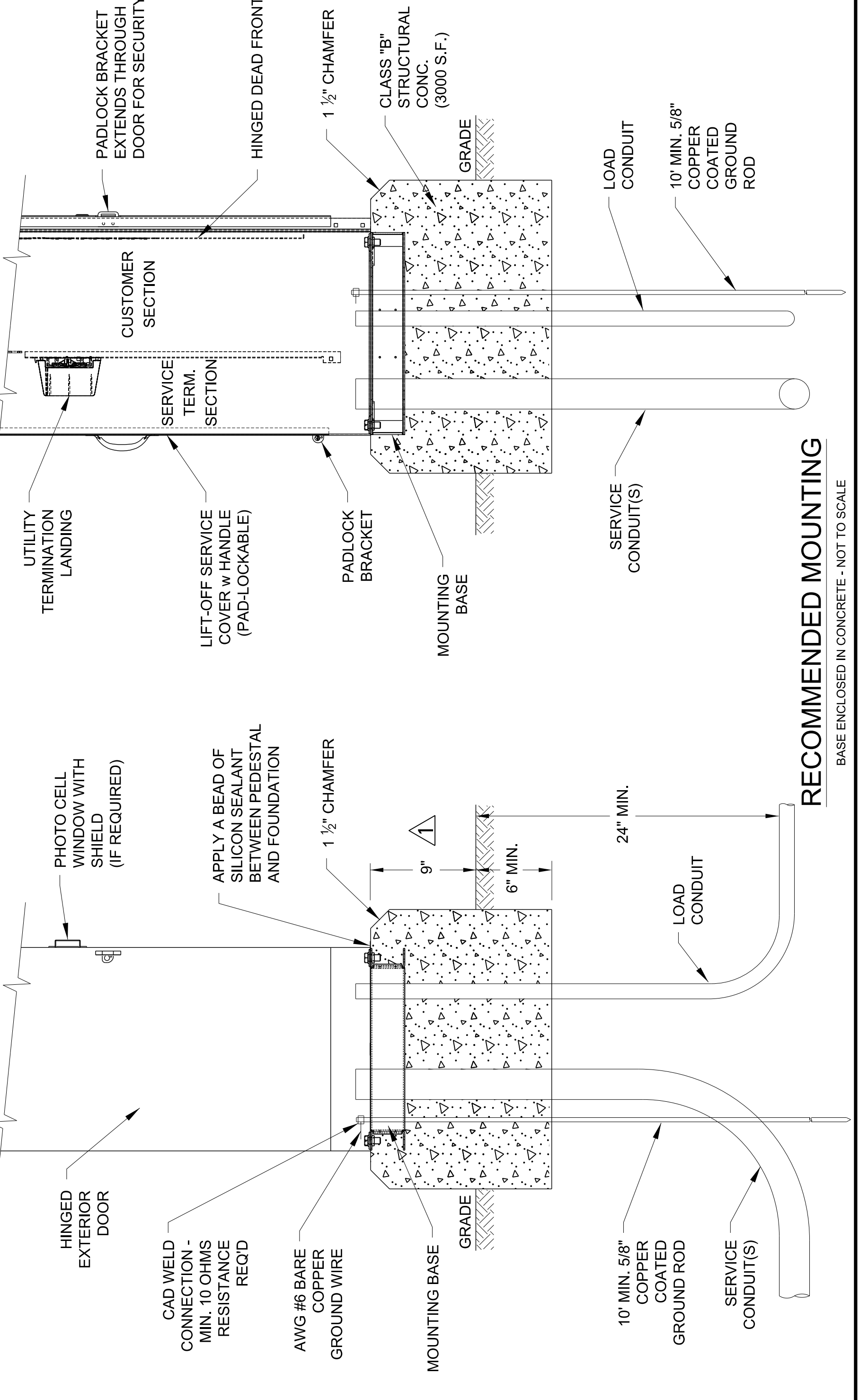
OPTIONAL MOUNTING

NO BASE, MOUNT DIRECTLY ON FOUNDATION - NOT TO SCALE



16" COMMERCIAL PEDESTAL

NOT TO SCALE



RECOMMENDED MOUNTING

BASE ENCLOSED IN CONCRETE - NOT TO SCALE

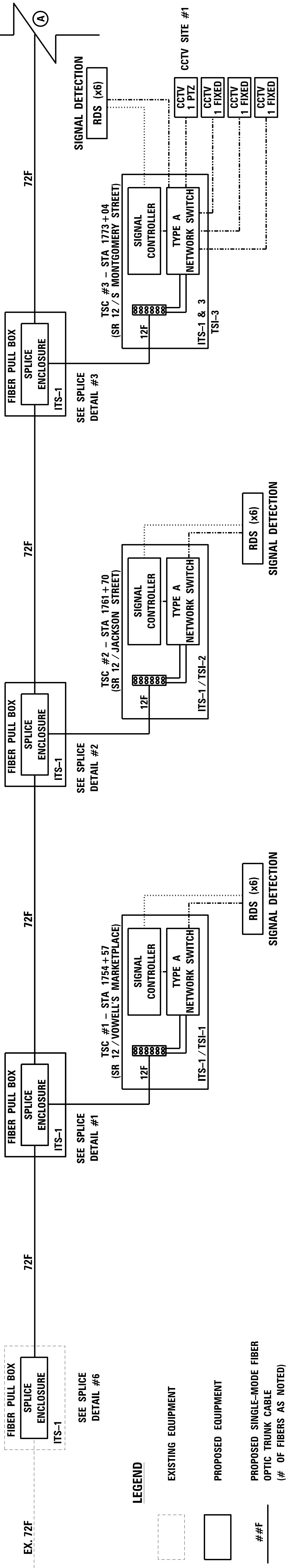
MISSISSIPPI DEPARTMENT OF TRANSPORTATION
 ROADWAY DESIGN DIVISION
 STANDARD PLAN

**GROUND MOUNTED
 POWER SERVICE
 PEDESTAL**

DATE	12/21/17	REVISION	REVISED DETAILS
BY	DM		

STATE	PROJECT NO.
MISS.	HSIP-0018-03(024)

STA. 1746+85
FULL SPlice EXISTING FIBER TO NEW FIBER IN PULL BOX 200' SLACK REQ'D.



EX. 72F

SEE SPlice DETAIL #6

SEE SPlice DETAIL #1

SEE SPlice DETAIL #2

SEE SPlice DETAIL #3

LEGEND

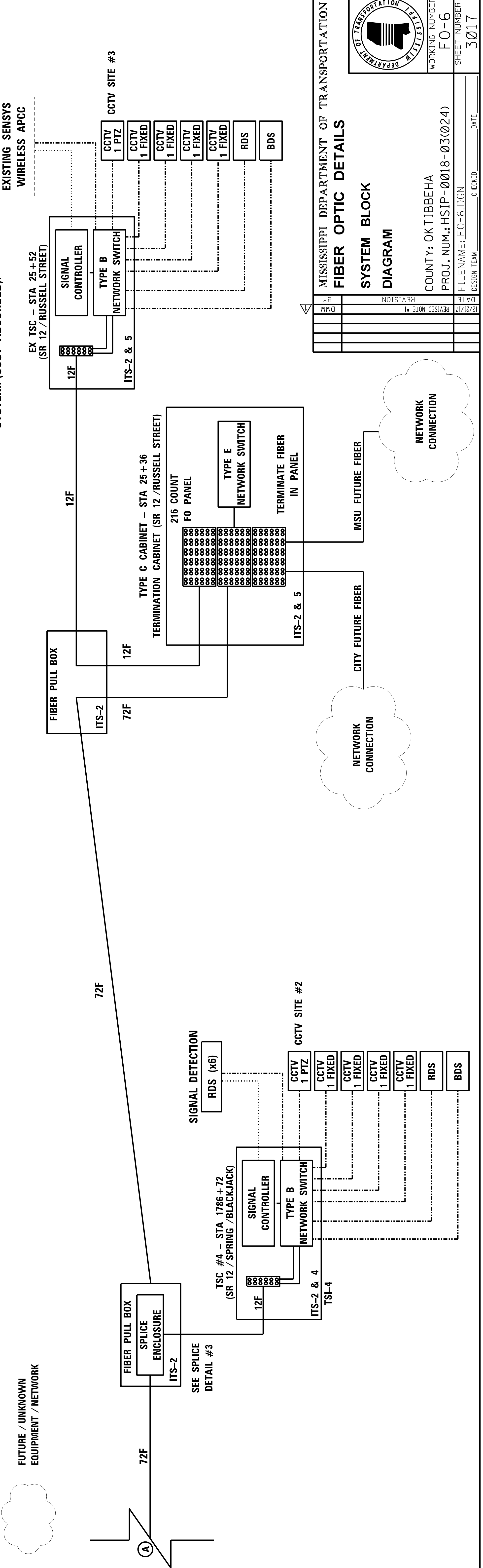
- EXISTING EQUIPMENT
- PROPOSED EQUIPMENT
- PROPOSED SINGLE-MODE FIBER OPTIC TRUNK CABLE (# OF FIBERS AS NOTED)
- PROPOSED SINGLE-MODE FIBER OPTIC DROP CABLE (PRE-TERMINATED)
- PROPOSED CAT 6 ETHERNET CABLE / COMPOSITE CABLE (PER MANUFACTURER'S RECOMMENDATIONS)
- PROPOSED CABLE CONNECTION BETWEEN SIGNAL CONTROLLER AND RADAR UNITS (PER MANUFACTURER'S RECOMMENDATIONS)
- FUTURE / UNKNOWN EQUIPMENT / NETWORK

12F

NOTES:

1. THE CONTRACTOR IS REQUIRED TO ESTABLISH COMMUNICATIONS BETWEEN THE INTERCONNECTED SIGNALS /ITS EQUIPMENT AND THE MDT STATEWIDE TMC. (COST ABSORBED UNDER OTHER BID ITEMS).
2. THE CONTRACTOR SHALL COORDINATE WITH MDT FOR IP ADDRESSES ON ALL NETWORKABLE DEVICES. DEVICES INCLUDE BUT NOT LIMITED TO: CONTROLLERS, CONFLICT MONITORS, AND DETECTION UNITS (ITS AND SIGNAL).

THE CONTRACTOR IS REQUIRED TO TIE EXISTING DETECTION UNITS (SENSYS WIRELESS) INTO COMMUNICATION SYSTEM. (COST ABSORBED).



SEE SPlice DETAIL #3

SEE SPlice DETAIL #2

SEE SPlice DETAIL #3

DATE	REVISION	BY
12/21/17	REVISED NOTE #1	DM

DESIGN TEAM	CHECKED	DATE
FILENAME: FO-6.DGN		
WORKING NUMBER	FO-6	SHEET NUMBER
COUNTY: OK TIBBEHA		3017
PROJ. NUM.: HSIP-0018-03(024)		

MISSISSIPPI DEPARTMENT OF TRANSPORTATION
FIBER OPTIC DETAILS
SYSTEM BLOCK DIAGRAM