

SECTION 905 -- PROPOSAL (CONTINUED)

I (We) hereby certify by digital signature and electronic submission via Bid Express of the Section 905 proposal below, that all certifications, disclosures and affidavits incorporated herein are deemed to be duly executed in the aggregate, fully enforceable and binding upon delivery of the bid proposal. I (We) further acknowledge that this certification shall not extend to the bid bond or alternate security which must be separately executed for the benefit of the Commission. This signature does not cure deficiencies in any required certifications, disclosures and/or affidavits. I (We) also acknowledge the right of the Commission to require full and final execution on any certification, disclosure or affidavit contained in the proposal at the Commission's election upon award. Failure to so execute at the Commission's request within the time allowed in the Standard Specifications for execution of all contract documents will result in forfeiture of the bid bond or alternate security.

Bidder acknowledges receipt of and has added to and made a part of the proposal and contract documents the following addendum (addenda):

ADDENDUM NO.	<u>1</u>	DATED	<u>2/14/2022</u>	ADDENDUM NO.	_____	DATED	_____
ADDENDUM NO.	_____	DATED	_____	ADDENDUM NO.	_____	DATED	_____
ADDENDUM NO.	_____	DATED	_____	ADDENDUM NO.	_____	DATED	_____

Number

Description

- 1 Revised Notice To Bidders No. 3853; Revised Bid Items; Revised/Added Plan Sheet No. 2, 9-10, 2001-2003, and 2005-2007; Amendment EBSx Download Required.

TOTAL ADDENDA: 1

(Must agree with total addenda issued prior to opening of bids)

Respectfully Submitted,

DATE _____

Contractor

BY _____

Signature

TITLE _____

ADDRESS _____

CITY, STATE, ZIP _____

PHONE _____

FAX _____

E-MAIL _____

(To be filled in if a corporation)

Our corporation is chartered under the Laws of the State of _____ and the names, titles and business addresses of the executives are as follows:

President

Address

Secretary

Address

Treasurer

Address

The following is my (our) itemized proposal.

NH-0014-01(075)/ 107938301000

Pike County(ies)

Revised 01/26/2016

MISSISSIPPI DEPARTMENT OF TRANSPORTATION

SECTION 904 - NOTICE TO BIDDERS NO. 3853

DATE: 02/14/2022

SUBJECT: Specialty Items

PROJECT: NH-0014-01(075)/107938301 - PIKE

Pursuant to the provisions of Section 108, the following work items are hereby designated as "Specialty Items" for this contract. Bidders are reminded that these items must be subcontracted in order to be considered as specialty items.

CATEGORY: PAVEMENT STRIPING AND MARKING

Line No	Pay Item	Description
0160	626-A001	6" Thermoplastic Double Drop Traffic Stripe, Skip White
0170	626-C002	6" Thermoplastic Double Drop Edge Stripe, Continuous White
0180	626-D001	6" Thermoplastic Double Drop Traffic Stripe, Skip Yellow
0190	626-E001	6" Thermoplastic Double Drop Traffic Stripe, Continuous Yellow
0200	626-G002	Thermoplastic Detail Stripe, White
0210	626-G003	Thermoplastic Detail Stripe, Yellow
0220	626-H004	Thermoplastic Legend, White
0230	626-H005	Thermoplastic Legend, White
0240	627-J001	Two-Way Clear Reflective High Performance Raised Markers
0250	627-L001	Two-Way Yellow Reflective High Performance Raised Markers
0260	627-P001	Two-Way Blue Reflective High Performance Raised Markers

CATEGORY: TRAFFIC CONTROL - PERMANENT

Line No	Pay Item	Description
0270	635-A059	Traffic Signal Head, Type 1
0280	635-A060	Traffic Signal Head, Type 1A
0290	635-A065	Traffic Signal Head, Type 2 FYA
0300	635-A071	Traffic Signal Head, Type 3A
0310	635-A073	Traffic Signal Head, Type 4
0320	635-A074	Traffic Signal Head, Type 4R
0330	647-A001	Removal of Existing Traffic Signal Equipment
0380	907-634-B001	Traffic Signal Equipment Pole Shaft Extension, 10'
0400	907-634-G001	Traffic Signal Equipment Pole Mast Arm Extension
0410	907-634-I004	Wood Pole, Class III Height 45'
0420	907-636-C007	Electric Cable, Aerial Supported, IMSA 20-1, AWG 14, 5 Conductor
0430	907-637-C028	Traffic Signal Conduit, Underground, Type 4, 2"
0440	907-637-D002	Traffic Signal Conduit, Underground Drilled or Jacked, Rolled Pipe, 2"
0450	907-640-A001	Vehicle Loop Assemblies
0460	907-640-B001	Shielded Cable, AWG #14, 2 Conductor
0470	907-643-A004	Video Vehicle Detection Sensor, Type 1A
0480	907-643-B001	Video Vehicle Detection Cable
0490	907-643-E001	Multi-Sensor Vehicle Detection Sensor
0500	907-643-F001	Multi-Sensor Vehicle Detection Cable

CATEGORY: TRAFFIC CONTROL - PERMANENT

Line No	Pay Item	Description
0510	907-662-D002	Radio Interconnect, Broadband, Short Range
0520	907-663-A001	Network Switch, Type A

CATEGORY: TRAFFIC CONTROL - TEMPORARY

Line No	Pay Item	Description
0080	619-A1001	Temporary Traffic Stripe, Continuous White
0090	619-A2001	Temporary Traffic Stripe, Continuous Yellow
0100	619-A3001	Temporary Traffic Stripe, Skip White
0110	619-A4002	Temporary Traffic Stripe, Skip Yellow
0120	619-A5001	Temporary Traffic Stripe, Detail
0130	619-A6001	Temporary Traffic Stripe, Legend
0140	619-A6002	Temporary Traffic Stripe, Legend

Mill & Overlay approximately 2 miles on SR 24 from the JCT of I-55 east to the JCT of US 51, known as Federal Aid Project No. NH-0014-01(075) / 107938301 in Pike County.

Line No.	Item Code	Adj Code	Quantity	Units	Description [Fixed Unit Price]
Roadway Items					
0010	203-G002	(E)	207	Cubic Yard	Excess Excavation, LVM, AH
0020	304-A008	(GY)	86	Cubic Yard	Granular Material, LVM, Class 6, Group D
0030	403-A014	(BA1)	9,252	Ton	9.5-mm, MT, Asphalt Pavement
0040	406-D001		108,703	Square Yard	Fine Milling of Bituminous Pavement, All Depths
0050	407-A001	(A2)	8,829	Gallon	Asphalt for Tack Coat
0060	618-A001		1	Lump Sum	Maintenance of Traffic
0070	618-B001		1	Square Feet	Additional Construction Signs [\$10.00]
0080	619-A1001		10	Mile	Temporary Traffic Stripe, Continuous White
0090	619-A2001		7	Mile	Temporary Traffic Stripe, Continuous Yellow
0100	619-A3001		8	Mile	Temporary Traffic Stripe, Skip White
0110	619-A4002		4	Mile	Temporary Traffic Stripe, Skip Yellow
0120	619-A5001		22,670	Linear Feet	Temporary Traffic Stripe, Detail
0130	619-A6001		4,466	Square Feet	Temporary Traffic Stripe, Legend
0140	619-A6002		6,006	Linear Feet	Temporary Traffic Stripe, Legend
0150	620-A001		1	Lump Sum	Mobilization
0160	626-A001		4	Mile	6" Thermoplastic Double Drop Traffic Stripe, Skip White
0170	626-C002		5	Mile	6" Thermoplastic Double Drop Edge Stripe, Continuous White
0180	626-D001		1	Mile	6" Thermoplastic Double Drop Traffic Stripe, Skip Yellow
0190	626-E001		3	Mile	6" Thermoplastic Double Drop Traffic Stripe, Continuous Yellow
0200	626-G002		7,884	Linear Feet	Thermoplastic Detail Stripe, White
0210	626-G003		9,365	Linear Feet	Thermoplastic Detail Stripe, Yellow
0220	626-H004		2,233	Square Feet	Thermoplastic Legend, White
0230	626-H005		3,004	Linear Feet	Thermoplastic Legend, White
0240	627-J001		103	Each	Two-Way Clear Reflective High Performance Raised Markers
0250	627-L001		1,306	Each	Two-Way Yellow Reflective High Performance Raised Markers
0260	627-P001		16	Each	Two-Way Blue Reflective High Performance Raised Markers
0270	635-A059		5	Each	Traffic Signal Head, Type 1
0280	635-A060		7	Each	Traffic Signal Head, Type 1A
0290	635-A065		9	Each	Traffic Signal Head, Type 2 FYA
0300	635-A071		3	Each	Traffic Signal Head, Type 3A
0310	635-A073		1	Each	Traffic Signal Head, Type 4
0320	635-A074		1	Each	Traffic Signal Head, Type 4R

Line No.	Item Code	Adj Code	Quantity	Units	Description [Fixed Unit Price]
0330	647-A001		1	Lump Sum	Removal of Existing Traffic Signal Equipment
0340	907-632-B004		1	Each	Remove and Replace Existing Traffic Signal Cabinet Assembly, Type II Cabinet, Type 1 Controller
0350	907-632-C001		5	Each	Modify Existing Traffic Signal Cabinet Assembly
0360	907-632-D001		3	Each	Solid State Traffic Actuated Controller, Type 1
0370	907-632-G001		3	Each	Malfunction Management Unit
0380	907-634-B001		2	Each	Traffic Signal Equipment Pole Shaft Extension, 10'
0400	907-634-G001		2	Each	Traffic Signal Equipment Pole Mast Arm Extension
0410	907-634-I004		1	Each	Wood Pole, Class III Height 45'
0420	907-636-C007		1,026	Linear Feet	Electric Cable, Aerial Supported, IMSA 20-1, AWG 14, 5 Conductor
0430	907-637-C028		55	Linear Feet	Traffic Signal Conduit, Underground, Type 4, 2"
0440	907-637-D002		200	Linear Feet	Traffic Signal Conduit, Underground Drilled or Jacked, Rolled Pipe, 2"
0450	907-640-A001		2,581	Linear Feet	Vehicle Loop Assemblies
0460	907-640-B001		197	Linear Feet	Shielded Cable, AWG #14, 2 Conductor
0470	907-643-A004		3	Each	Video Vehicle Detection Sensor, Type 1A
0480	907-643-B001		432	Linear Feet	Video Vehicle Detection Cable
0490	907-643-E001		3	Each	Multi-Sensor Vehicle Detection Sensor
0500	907-643-F001		522	Linear Feet	Multi-Sensor Vehicle Detection Cable
0510	907-662-D002		7	Each	Radio Interconnect, Broadband, Short Range
0520	907-663-A001		6	Each	Network Switch, Type A

ADDENDUM

DESCRIPTION OF SHEET

TITLE AND LAYOUT SHEET (1)	
DETAILED INDEX (1)	
GENERAL NOTES (1)	
TYPICAL SECTION SHEETS (5)	
TYPICAL SECTION - SR 24 MAINLINE	
TYPICAL SECTION - SR 24 MAINLINE	
TYPICAL SECTION - SR 24 MAINLINE	
TYPICAL SECTION - SR 24 MAINLINE	
TYPICAL SECTION - INTERCHANGE RAMPS	
QUANTITY SHEETS (4)	
SUMMARY OF QUANTITIES	
ESTIMATED QUANTITIES FOR MILLING, ASPHALT, AND GRANULAR MATERIAL	
ESTIMATED QUANTITIES FOR TRAFFIC CONTROL SIGNS	
PLAN & PROFILE SHEETS (16)	
STA. 1100+00 TO STA. 1108+00	
STA. 1108+00 TO STA. 1114+00	
STA. 1114+00 TO STA. 1126+00	
STA. 1126+00 TO STA. 1135+00	
STA. 1135+00 TO STA. 1144+00	
STA. 1144+00 TO STA. 1153+00	
STA. 1153+00 TO STA. 1162+00	
STA. 1162+00 TO STA. 1171+00	
STA. 1171+00 TO STA. 1180+00	
STA. 1180+00 TO STA. 1189+00	
STA. 1189+00 TO STA. 1198+00	
STA. 1198+00 TO STA. 1207+00	
STA. 1207+00 TO STA. 1216+00	
STA. 1216+00 TO STA. 1225+00	
SR 24 @ LASALLE, US 51 / BROADWAY	
STA. 1225+00 TO STA. 1230+12.653	

SPECIAL DESIGN SHEETS (6)	
DETAIL OF CONSTRUCTION SIGNING - SR 24	
DETAIL OF CONSTRUCTION SIGNING - SR 24	
DETAIL FOR CURB AND ISLAND PAINTING	
DETAIL OF STRIPING CHANNELIZED INTERSECTIONS	
GUARDRAIL: TYPICAL INSTALLATION FOR ROADSIDE HAZARDS ON DIVIDED HIGHWAYS	
GUARDRAIL: POST INSTALLATION IN PAVED AREAS	

TRAFFIC SIGNAL SHEETS (15)	
TRAFFIC SIGNAL: SR 24 @ N.W. & S.W. INTERCHANGE RAMPS	
TRAFFIC SIGNAL: SR 24 @ WENDY'S	
TRAFFIC SIGNAL: SR 24 @ PARKLANE	
TRAFFIC SIGNAL: SR 24 @ OLD LIBERTY RD	
TRAFFIC SIGNAL: SR 24 @ BENDAT	
TRAFFIC SIGNAL: SR 24 @ LASALLE, US 51 / BROADWAY	
TRAFFIC SIGNAL: SR 24 @ MAGNOLIA STREET	
TRAFFIC SIGNAL GENERAL NOTES	
TRAFFIC SIGNAL HEADS, TRAFFIC SIGNAL SIGNS AND WIND SPEEDS	
CURVED MAST ARM AND PEDESTAL POLE DETAILS	
CONTROLLER CABINET AND POWER SERVICE DETAILS	
LOOP DETECTOR DETAILS	
VIDEO / MULTI-SENSOR DETECTION INSTALLATION FOR TRAFFIC SIGNALS	
SPAN WIRE DETAILS	
POLE EXTENSION AND CAMERA MOUNTING DETAILS	

WKG. NO. SH. NO.

1	
DI-1	
GN-1	
TS-1	
TS-2	
TS-3	
TS-4	
TS-5	
SQ-1	
SQ-2	
EQ-1	
TCPQ-1	
WK3	
WK4	
WK5	
WK6	
WK7	
WK8	
WK9	
WK10	
WK11	
WK12	
WK13	
WK14	
WK15	
WK16	
WK16A	
WK17	
DCS-1	
DCS-2	
DCIS-1	
PMD-4	
GR-4B-MOD	
GR-PI	

TSI-1	2001
TSI-2	2002
TSI-3	2003
TSI-4	2004
TSI-5	2005
TSI-6	2006
TSI-7	2007
TSI-8	2008
TSI-9	2009
TSI-10	2010
TSI-11	2011
TSI-12	2012
TSI-13	2013
TSI-14	2014
TSI-15	2015

FMS CON: 107538 / 301000	STATE	PROJECT NO.
MISS.	MISS.	NH-0014-01(075)

STANDARD DRAWINGS (14)	PM-1	6051
PAVEMENT MARKING DETAILS FOR 2-LANE AND 4-LANE DIVIDED HIGHWAYS	PM-2	6052
PAVEMENT MARKING DETAILS FOR 3-LANE 4-LANE AND 5-LANE UNDIVIDED ROADWAYS	PM-3	6053
PAVEMENT MARKING LEGEND DETAILS	PM-4	6054
4-LANE TO 2-LANE TRANSITION AT INTERCHANGE	PM-5	6055
2-WAY RAISED PAVEMENT MARKERS AT INTERSECTING ROADS (2-LANE)	PM-6	6056
TRAFFIC CONTROL PLAN WITH FLAGGER (ONE-LANE CLOSURE OF TWO-WAY TRAFFIC)	PM-7	6057
(4-LANE) MEDIAN LANE OR OUTSIDE LANE CLOSURE (WORK DAY ONLY)	PM-8	6058
TRAFFIC CONTROL PLAN FOR POSTED SPEED LIMIT LESS THAN 65MPH	PM-9	6059
(4-LANE) MEDIAN LANE OR OUTSIDE LANE CLOSURE (EXTENDED PERIOD)	PM-10	6060
HIGHWAY SIGN AND BARRICADE DETAIL FOR CONSTRUCTION PROJECTS	PM-11	6061
TRAFFIC CONTROL PLAN MOBILE OPERATIONS MULTILANE ROADS AND TWO-LANE ROADS	PM-12	6062
TRAFFIC CONTROL PLANS UNEVEN PAVEMENT DETAILS	PM-13	6063
TEMPORARY STRIPING FOR TRAFFIC CONTROL 2-LANE AND 4-LANE DIVIDED HIGHWAYS	PM-14	6064
TEMPORARY STRIPING FOR TRAFFIC CONTROL 4-LANE AND 5-LANE UNDIVIDED ROADWAYS	PM-15	6065
TRAFFIC CONTROL DETAILS DRUM PLACEMENT AND SHOULDER CLOSURE	PM-16	6066

TOTAL SHEETS (63)

DISTRICT 7		
PS & E PLANS-DATE 06/29/2021		
FMS CON. * 107538/301000		
REVISIONS		
DATE	SHEET NO.	BY
10/13/21	2,9,10,20,24,2015	CLH
02/04/22	9, 20B1-20C3,20D5-20E7	CLH

10/1/21	Added and removed a sheet	DATE	10/1/21
11/1/21	Added and removed a sheet	DATE	11/1/21
12/1/21	Added and removed a sheet	DATE	12/1/21
1/1/22	Added and removed a sheet	DATE	1/1/22
2/1/22	Added and removed a sheet	DATE	2/1/22
3/1/22	Added and removed a sheet	DATE	3/1/22
4/1/22	Added and removed a sheet	DATE	4/1/22
5/1/22	Added and removed a sheet	DATE	5/1/22
6/1/22	Added and removed a sheet	DATE	6/1/22
7/1/22	Added and removed a sheet	DATE	7/1/22
8/1/22	Added and removed a sheet	DATE	8/1/22
9/1/22	Added and removed a sheet	DATE	9/1/22
10/1/22	Added and removed a sheet	DATE	10/1/22
11/1/22	Added and removed a sheet	DATE	11/1/22
12/1/22	Added and removed a sheet	DATE	12/1/22
1/1/23	Added and removed a sheet	DATE	1/1/23
2/1/23	Added and removed a sheet	DATE	2/1/23
3/1/23	Added and removed a sheet	DATE	3/1/23
4/1/23	Added and removed a sheet	DATE	4/1/23
5/1/23	Added and removed a sheet	DATE	5/1/23
6/1/23	Added and removed a sheet	DATE	6/1/23
7/1/23	Added and removed a sheet	DATE	7/1/23
8/1/23	Added and removed a sheet	DATE	8/1/23
9/1/23	Added and removed a sheet	DATE	9/1/23
10/1/23	Added and removed a sheet	DATE	10/1/23
11/1/23	Added and removed a sheet	DATE	11/1/23
12/1/23	Added and removed a sheet	DATE	12/1/23
1/1/24	Added and removed a sheet	DATE	1/1/24
2/1/24	Added and removed a sheet	DATE	2/1/24
3/1/24	Added and removed a sheet	DATE	3/1/24
4/1/24	Added and removed a sheet	DATE	4/1/24
5/1/24	Added and removed a sheet	DATE	5/1/24
6/1/24	Added and removed a sheet	DATE	6/1/24
7/1/24	Added and removed a sheet	DATE	7/1/24
8/1/24	Added and removed a sheet	DATE	8/1/24
9/1/24	Added and removed a sheet	DATE	9/1/24
10/1/24	Added and removed a sheet	DATE	10/1/24
11/1/24	Added and removed a sheet	DATE	11/1/24
12/1/24	Added and removed a sheet	DATE	12/1/24
1/1/25	Added and removed a sheet	DATE	1/1/25
2/1/25	Added and removed a sheet	DATE	2/1/25
3/1/25	Added and removed a sheet	DATE	3/1/25
4/1/25	Added and removed a sheet	DATE	4/1/25
5/1/25	Added and removed a sheet	DATE	5/1/25
6/1/25	Added and removed a sheet	DATE	6/1/25
7/1/25	Added and removed a sheet	DATE	7/1/25
8/1/25	Added and removed a sheet	DATE	8/1/25
9/1/25	Added and removed a sheet	DATE	9/1/25
10/1/25	Added and removed a sheet	DATE	10/1/25
11/1/25	Added and removed a sheet	DATE	11/1/25
12/1/25	Added and removed a sheet	DATE	12/1/25
1/1/26	Added and removed a sheet	DATE	1/1/26
2/1/26	Added and removed a sheet	DATE	2/1/26
3/1/26	Added and removed a sheet	DATE	3/1/26
4/1/26	Added and removed a sheet	DATE	4/1/26
5/1/26	Added and removed a sheet	DATE	5/1/26
6/1/26	Added and removed a sheet	DATE	6/1/26
7/1/26	Added and removed a sheet	DATE	7/1/26
8/1/26	Added and removed a sheet	DATE	8/1/26
9/1/26	Added and removed a sheet	DATE	9/1/26
10/1/26	Added and removed a sheet	DATE	10/1/26
11/1/26	Added and removed a sheet	DATE	11/1/26
12/1/26	Added and removed a sheet	DATE	12/1/26
1/1/27	Added and removed a sheet	DATE	1/1/27
2/1/27	Added and removed a sheet	DATE	2/1/27
3/1/27	Added and removed a sheet	DATE	3/1/27
4/1/27	Added and removed a sheet	DATE	4/1/27
5/1/27	Added and removed a sheet	DATE	5/1/27
6/1/27	Added and removed a sheet	DATE	6/1/27
7/1/27	Added and removed a sheet	DATE	7/1/27
8/1/27	Added and removed a sheet	DATE	8/1/27
9/1/27	Added and removed a sheet	DATE	9/1/27
10/1/27	Added and removed a sheet	DATE	10/1/27
11/1/27	Added and removed a sheet	DATE	11/1/27
12/1/27	Added and removed a sheet	DATE	12/1/27
1/1/28	Added and removed a sheet	DATE	1/1/28
2/1/28	Added and removed a sheet	DATE	2/1/28
3/1/28	Added and removed a sheet	DATE	3/1/28
4/1/28	Added and removed a sheet	DATE	4/1/28
5/1/28	Added and removed a sheet	DATE	5/1/28
6/1/28	Added and removed a sheet	DATE	6/1/28
7/1/28	Added and removed a sheet	DATE	7/1/28
8/1/28	Added and removed a sheet	DATE	8/1/28
9/1/28	Added and removed a sheet	DATE	9/1/28
10/1/28	Added and removed a sheet	DATE	10/1/28
11/1/28	Added and removed a sheet	DATE	11/1/28
12/1/28	Added and removed a sheet	DATE	12/1/28
1/1/29	Added and removed a sheet	DATE	1/1/29
2/1/29	Added and removed a sheet	DATE	2/1/29
3/1/29	Added and removed a sheet	DATE	3/1/29
4/1/29	Added and removed a sheet	DATE	4/1/29
5/1/29	Added and removed a sheet	DATE	5/1/29
6/1/29	Added and removed a sheet	DATE	6/1/29
7/1/29	Added and removed a sheet	DATE	7/1/29
8/1/29	Added and removed a sheet	DATE	8/1/29
9/1/29	Added and removed a sheet	DATE	9/1/29
10/1/29	Added and removed a sheet	DATE	10/1/29
11/1/29	Added and removed a sheet	DATE	11/1/29
12/1/29	Added and removed a sheet	DATE	12/1/29
1/1/30	Added and removed a sheet	DATE	1/1/30
2/1/30	Added and removed a sheet	DATE	2/1/30
3/1/30	Added and removed a sheet	DATE	3/1/30
4/1/30	Added and removed a sheet	DATE	4/1/30
5/1/30	Added and removed a sheet	DATE	5/1/30
6/1/30	Added and removed a sheet	DATE	6/1/30
7/1/30	Added and removed a sheet	DATE	7/1/30
8/1/30	Added and removed a sheet	DATE	8/1/30
9/1/30	Added and removed a sheet	DATE	9/1/30
10/1/30	Added and removed a sheet	DATE	10/1/30
11/1/30	Added and removed a sheet	DATE	11/1/30
12/1/30	Added and removed a sheet	DATE	12/1/30
1/1/31	Added and removed a sheet	DATE	1/1/31
2/1/31	Added and removed a sheet	DATE	2/1/31
3/1/31	Added and removed a sheet	DATE	3/1/31
4/1/31	Added and removed a sheet	DATE	4/1/31
5/1/31	Added and removed a sheet	DATE	5/1/31
6/1/31	Added and removed a sheet	DATE	6/1/31
7/1/31	Added and removed a sheet	DATE	7/1/31
8/1/31	Added and removed a sheet	DATE	8/1/31
9/1/31	Added and removed a sheet	DATE	9/1/31
10/1/31	Added and removed a sheet	DATE	10/1/31
11/1/31	Added and removed a sheet	DATE	11/1/31
12/1/31	Added and removed a sheet	DATE	12/1/31
1/1/32	Added and removed a sheet	DATE	1/1/32
2/1/32	Added and removed a sheet	DATE	2/1/32
3/1/32	Added and removed a sheet	DATE	3/1/32
4/1/32	Added and removed a sheet	DATE	4/1/32
5/1/32	Added and removed a sheet	DATE	5/1/32
6/1/32	Added and removed a sheet	DATE	6/1/32
7/1/32	Added and removed a sheet	DATE	7/1/32
8/1/32	Added and removed a sheet	DATE	8/1/32
9/1/32	Added and removed a sheet	DATE	9/1/32
10/1/32	Added and removed a sheet	DATE	10/1/32
11/1/32	Added and removed a sheet	DATE	11/1/32
12/1/32	Added and removed a sheet	DATE	12/1/32
1/1/33	Added and removed a sheet	DATE	1/1/33
2/1/33	Added and removed a sheet	DATE	2/1/33
3/1/33	Added and removed a sheet	DATE	3/1/33
4/1/33	Added and removed a sheet	DATE	4/1/33
5/1/33	Added and removed a sheet	DATE	5/1/33
6/1/33	Added and removed a sheet	DATE	6/1/33
7/1/33	Added and removed a sheet	DATE	7/1/33
8/1/33	Added and removed a sheet	DATE	8/1/33
9/1/33	Added and removed a sheet	DATE	9/1/33
10/1/33	Added and removed a sheet	DATE	10/1/33
11/1/33	Added and removed a sheet	DATE	11/1/33
12/1/33	Added and removed a sheet	DATE	12/1/33
1/1/34	Added and removed a sheet	DATE	1/1/34
2/1/34	Added and removed a sheet	DATE	2/1/34
3/1/34	Added and removed a sheet	DATE	3/1/34
4/1/34	Added and removed a sheet	DATE	4/1/34
5/1/34	Added and removed a sheet	DATE	5/1/34
6/1/34	Added and removed a sheet	DATE	6/1/34
7/1/34	Added and removed a sheet	DATE	7/1/34
8/1/34	Added and removed a sheet	DATE	8/1/34
9/1/34	Added and removed a sheet	DATE	9/1/34
10/1/34	Added and removed a sheet	DATE	10/1/34
11/1/34	Added and removed a sheet	DATE	11/1/34
12/1/34	Added and removed a sheet	DATE	12/1/34
1/1/35	Added and removed a sheet	DATE	1/1/35
2/1/35	Added and removed a sheet	DATE	2/1/35
3/1/35	Added and removed a sheet	DATE	3/1/35
4/1/35	Added and removed a sheet	DATE	4/1/35
5/1/35	Added and removed a sheet	DATE	5/1/35
6/1/35	Added and removed a sheet	DATE	6/1/35
7/1/35	Added and removed a sheet	DATE	7/1/35
8/1/35	Added and removed a sheet	DATE	8/1/35
9/1/35	Added and removed a sheet	DATE	9/1/35
10/1/35	Added and removed a sheet	DATE	10/1/35
11/1/35	Added and removed a sheet	DATE	11/1/35
12/1/35	Added and removed a sheet	DATE	12/1/35
1/1/36	Added and removed a sheet	DATE	1/1/36
2/1/36	Added and removed a sheet	DATE	2/1/36
3/1/36	Added and removed a sheet	DATE	3/1/36
4/1/36	Added and removed a sheet	DATE	4/1/36
5/1/36	Added and removed a sheet	DATE	5/1/36
6/1/36	Added and removed a sheet	DATE	6/1/36
7/1/36	Added and removed a sheet	DATE	7/1/36
8/1/36	Added and removed a sheet	DATE	8/1/36
9/1/36	Added and removed a sheet	DATE	9/1/36
10/1/36	Added and removed a sheet	DATE	10/1/36
11/1/36	Added and removed a sheet	DATE	11/1/36
12/1/36	Added and removed a sheet	DATE	12/1/36
1/1/37	Added and removed a sheet	DATE	1/1/37
2/1/37	Added and removed a sheet	DATE	2/1/37
3/1/37	Added and removed a sheet	DATE	3/1/37
4/1/37	Added and removed a sheet	DATE	4/1/37
5/1/37	Added and removed a sheet	DATE	5/1/37
6/1/37	Added and removed a sheet	DATE	6/1/37
7/1/37	Added and removed a sheet	DATE	7/1/37
8/1/37	Added and removed a sheet	DATE	8/1/37
9/1/37	Added and removed a sheet	DATE	9/1/37
10/1/37	Added and removed a sheet	DATE	10/1/37
11/1/37	Added and removed a sheet	DATE	11/1/37
12/1/37	Added and removed a sheet	DATE	12/1/37
1/1/38	Added and removed a sheet	DATE	1/1/38
2/1/38	Added and removed a sheet	DATE	2/1/38
3/1/38	Added and removed a sheet	DATE	3/1/38
4/1/38	Added and removed a sheet	DATE	4/1/38
5/1/38	Added and removed a sheet	DATE	5/1/38
6/1/38	Added and removed a sheet	DATE	6/1/38
7/1/38	Added and removed a sheet	DATE	7/1/38
8/1/38	Added and removed a sheet	DATE	8/1/38
9/1/38	Added and		

ADDENDUM

STATE	MISS	PROJECT NO.
		NH-0014-01(075)

SUMMARY OF QUANTITIES (SHEET 1)

PAY ITEM NO.	PAY ITEM	UNIT	PIKE : 107938-301000	
			Prelim	Final
203-G002	Excess Excavation, LVM, AH	CY	207	
304-A008	Granular Material, LVM, Class 6, Group D	CY	86	
403-A014	9.5-mm, MT, Asphalt Pavement	TON	9,252	
406-D001	Fine Milling of Bituminous Pavement, All Depths	SY	108,703	
407-A001	Asphalt for Tack Coat	GAL	8,829	
618-A001	Maintenance of Traffic	LS	1	
618-B001	Additional Construction Signs	SF	1	
619-A1001	Temporary Traffic Stripe, Continuous White	MI	10	
619-A2001	Temporary Traffic Stripe, Continuous Yellow	MI	7	
619-A3001	Temporary Traffic Stripe, Skip White	MI	8	
619-A4002	Temporary Traffic Stripe, Skip Yellow	MI	4	
619-A5001	Temporary Traffic Stripe, Detail	LF	22,670	
619-A6001	Temporary Traffic Stripe, Legend	SF	4,466	
619-A6002	Temporary Traffic Stripe, Legend	LF	6,006	
620-A001	Mobilization	LS	1	
626-A001	6" Thermoplastic Double Drop Traffic Stripe, Skip White	MI	4	
626-C002	6" Thermoplastic Double Drop Edge Stripe, Continuous White	MI	5	
626-D001	6" Thermoplastic Double Drop Traffic Stripe, Skip Yellow	MI	1	
626-E001	6" Thermoplastic Double Drop Traffic Stripe, Continuous Yellow	MI	3	
626-G002	Thermoplastic Detail Stripe, White	LF	7,884	
626-G003	Thermoplastic Detail Stripe, Yellow	LF	9,365	
626-H004	Thermoplastic Legend, White	SF	2,233	
626-H005	Thermoplastic Legend, White	LF	3,004	
627-J001	Two-Way Clear Reflective High Performance Raised Markers	EA	103	
627-L001	Two-Way Yellow Reflective High Performance Raised Markers	EA	1,306	
627-P001	Two-Way Blue Reflective High Performance Raised Markers	EA	16	
907-632-B004	Remove and Replace Existing Traffic Signal Cabinet Assembly, Type II Cabinet, Type 1 Controller	EA	1	
907-632-C001	Modify Existing Traffic Signal Cabinet Assembly	EA	5	
907-632-D001	Solid State Traffic Actuated Controller, Type 1	EA	3	
907-632-G001	Malfunction Management Unit	EA	3	
907-634-B001	Traffic Signal Equipment Pole Shaft Extension, 10'	EA	2	
907-634-G001	Traffic Signal Equipment Pole Mast Arm Extension	EA	2	
907-634-I004	Wood Pole, Class III Height 45'	EA	1	
635-A059	Traffic Signal Head, Type 1	EA	5	
635-A060	Traffic Signal Head, Type 1A	EA	7	
635-A065	Traffic Signal Head, Type 2 FYA	EA	9	
635-A071	Traffic Signal Head, Type 3A	EA	3	
635-A073	Traffic Signal Head, Type 4	EA	1	
635-A074	Traffic Signal Head, Type 4R	EA	1	
907-636-C007	Electric Cable, Aerial Supported, IMSA 20-1, AWG 14, 5 Conductor	LF	1,026	
907-637-C028	Traffic Signal Conduit, Underground, Type 4, 2"	LF	55	
907-637-D002	Traffic Signal Conduit, Underground Drilled or Jacked, Rolled Pipe, 2"	LF	200	
907-640-A001	Vehicle Loop Assemblies	LF	2,581	
907-640-B001	Shielded Cable, AWG #14, 2 Conductor	LF	197	

- 1) COVERS ALL RE-PHASING/MODIFICATION OF THE EXISTING TRAFFIC SIGNAL CABINETS, RECONFIGURING RADIOS, AND ANY INCIDENTAL MATERIALS AT I-55, MAGNOLIA CROSSING/WENDY'S, PARKLANE, US 51, AND MAGNOLIA NECESSARY TO ACCOMPLISH THE WORK ILLUSTRATED IN THE PLANS.
- 2) SHALL BE LOCATED ON THE SOUTH SIDE OF SR 24 NEAR STATION 1161+50 SO THAT THE TREE LINE DOES NOT INTERFERE WITH THE SIGNAL.
- 3) ONLY TO BE USED AS DIRECTED BY THE PROJECT ENGINEER IF THE EXISTING CONDUIT IS DETERMINED TO BE UNUSABLE.
- 4) CONTACT TRAFFIC ENGINEERING SO THAT THE TIMINGS FROM THE OLD CONTROLLERS CAN BE SWAPPED TO THE NEW CONTROLLERS.
- 5) LOCATED AT BENDAT.
- 6) TYPE "A" HEADS SHALL BE LOUVERED.
- 7) MINIMUM VERTICAL CLEARANCE OF 18' +- 1' SHALL BE MAINTAINED ON ALL TRAFFIC SIGNAL HEADS. HEADS SHALL BE ADJUSTED SO THAT THE RED SECTION INDICATIONS ARE APPROXIMATELY THE SAME HEIGHT. SEE TSD-3C AND TSD-12. (COST ABSORBED)

MISSISSIPPI DEPARTMENT OF TRANSPORTATION
SUMMARY OF QUANTITIES

By	CLH	Checked	Date
Reviewed	RTMS		
PROJ NO: NH-0014-01(075) COUNTY: PIKE		FILENAME: 107938 SQS	Sheet Number 9
Working Number SQ-1			

ADDENDUM

STATE	MISS
PROJECT NO.	NH-0014-01(075)

SUMMARY OF QUANTITIES (SHEET 2)

PAY ITEM NO.	PAY ITEM	UNIT	PIKE : 107938-301000	
			Prelim	Final
907-643-A004	Video Vehicle Detection Sensor, Type 1A	EA	3	
907-643-B001	Video Vehicle Detection Cable	LF	432	
907-643-E001	Multi-Sensor Vehicle Detection Sensor	EA	3	
907-643-F001	Multi-Sensor Vehicle Detection Cable	LF	522	
647-A001	Removal of Existing Traffic Signal Equipment	LS	1	
907-662-B002	Radio Interconnect, Signal Control, Installed in Existing Controller Cabinet	EA	0	
907-662-C001	Radio Interconnect, Signal Control Repeater	EA	0	
907-662-D002	Radio Interconnect, Broadband, Short Range	EA	7	
907-663-A001	Network Switch, Type A	EA	6	
907-663-D001	Category 6 Cable, Installed in Conduit	LF	0	

- ① CONTROLLERS, MMU'S, AND RADIOS TO BE SALVAGED TO MDOT.
- ② INCLUDES ALL EQUIPMENT, MATERIALS, COMMUNICATIONS, AND POWER CABLING NECESSARY FOR A COMPLETE AND OPERABLE UNIT. INCLUDES 6 RADIOS LOCATED AT EACH SIGNALIZED INTERSECTION, AS WELL AS 1 SOLAR POWERED REPEATER RADIO LOCATED NEAR OLD LIBERTY RD (STA. 1151+50). SOLAR POWER UNIT SHALL BE COST ABSORBED. LOCATED AT WENDY'S PARKLANE, THE REPEATER AT OLD LIBERTY RD, BENDAT, US 51, AND MAGNOLIA.

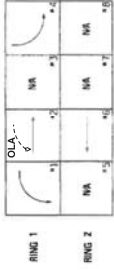


CLH	Revision	MISSISSIPPI DEPARTMENT OF TRANSPORTATION SUMMARY OF QUANTITIES	
10/04/2022	DELETED PAY ITEMS/ADDED PAY ITEMS	PROJ NO: NH-0014-01(075) COUNTY: PIKE FILENAME: 107938 SQS	Working Number SQ-2 Sheet Number 10
	Design Team	Checked	Date

ADDENDUM

FMS CON: 107538 /301000
STATE PROJECT NO.
MISS. NH-0014-01(075)

SIGNAL PHASING



OLA +GRN -G/Y RED
Ø2 Ø1 3.0

OLA ■ LS9

PREEMPTION
001 : 1.6,OLA
002 : 2
003 : 4

FLASHING OPERATION - YELLOW PHASE 3, 4, 5
RED PHASE 4, OLA
NO FLASH PHASE 1

NOTES:
1) CONTROLLER ADDRESS 001
2) RE-PHASE /MODIFY CABINET TO ACCOMMODATE
FYA (907-632-C001)

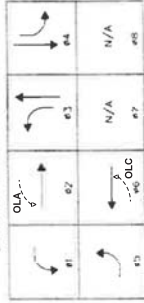
WORK REQUIRED

NUMBER	SIZE	DETECTOR	COMMENTS	PERIMETER	LEAD-IN	LENGTH
1	6' X 50'	MS1	VIDEO			
2A	6' X 6'	1-3	LOCATED 330' FROM STOP LINE	24'	23'	47'
2B	6' X 6'	1-4	LOCATED 330' FROM STOP LINE	24'	11'	35'
4A	6' X 50'	VD1	VIDEO			
4B	6' X 50'	VD1	VIDEO			
6A	6' X 6'	MS1	RADAR			
6B	6' X 6'	MS1	RADAR			
			LOCATED 330' FROM STOP LINE			
			LOCATED 330' FROM STOP LINE			
			TOTALS	48'	34'	82'

MISSISSIPPI DEPARTMENT OF TRANSPORTATION	
TRAFFIC SIGNAL	
SR 24 @ N.W. & S.W.	
INTERCHANGE RAMPS	
PROJ. NO.: NH-0014-01(075)	
COUNTY: PIKE	
FILE NAME: 132SR 24 @ Inter. Ramps.dwg	DATE
DESIGN TEAM	CHECKED
2001	

ADDENDUM

SIGNAL PHASING DIAGRAM

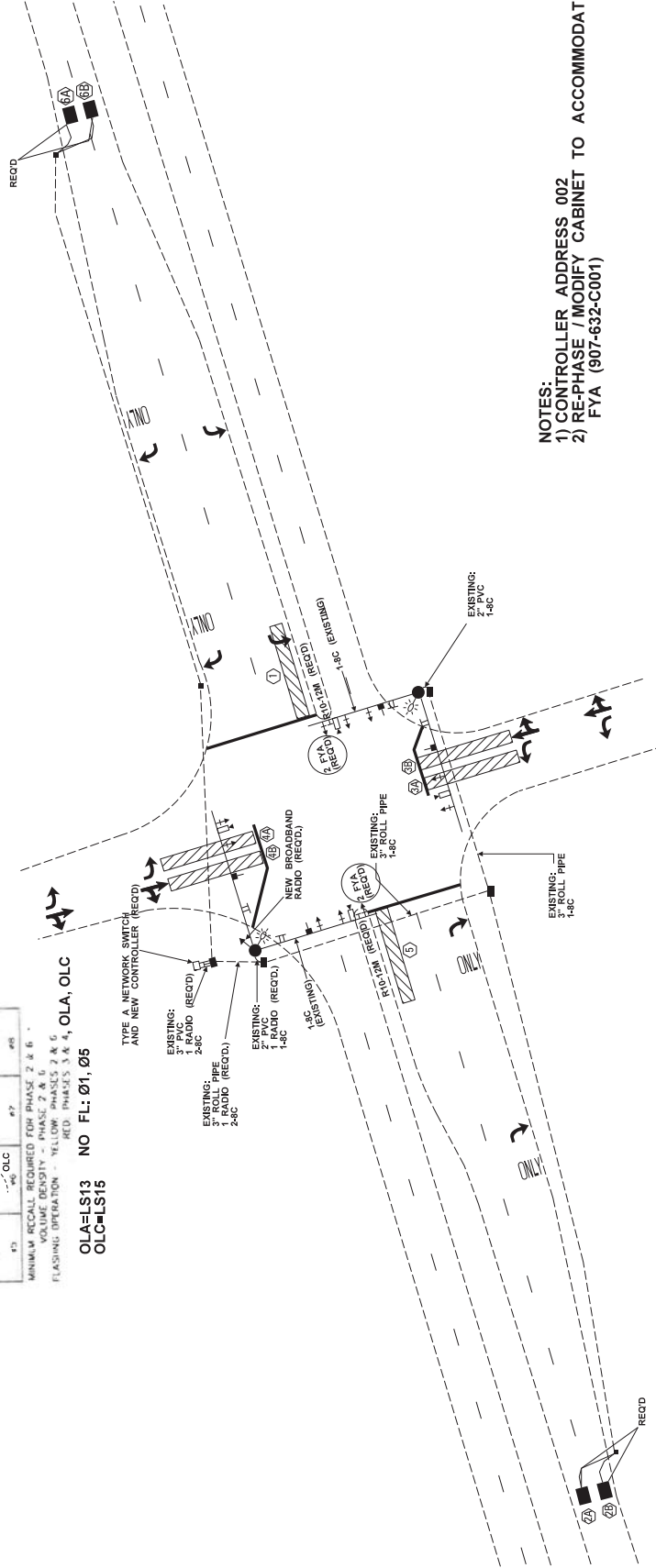


MINIMUM RECALL REQUIRED FOR PHASE 2 & 6 -
VOLUME DENSITY - PHASE 2 & 6
FLASHING OPERATION - RED PHASES 3 & 4, OLA, OLC

OLA=LS13
OLC=LS15
NO FL: Ø1, Ø5

+GRN	-GY	RED
OLA Ø2	Ø1	Ø1
OLC Ø6	Ø5	Ø3

PREEMPTION
ØD1 : 1.6 OLA
ØD2 : 2.5 OLC
ØD3 : 3
ØD4 : 4



NOTES:
1) CONTROLLER ADDRESS 002
2) RE-PHASE / MODIFY CABINET TO ACCOMMODATE FYA (907-632-C001)

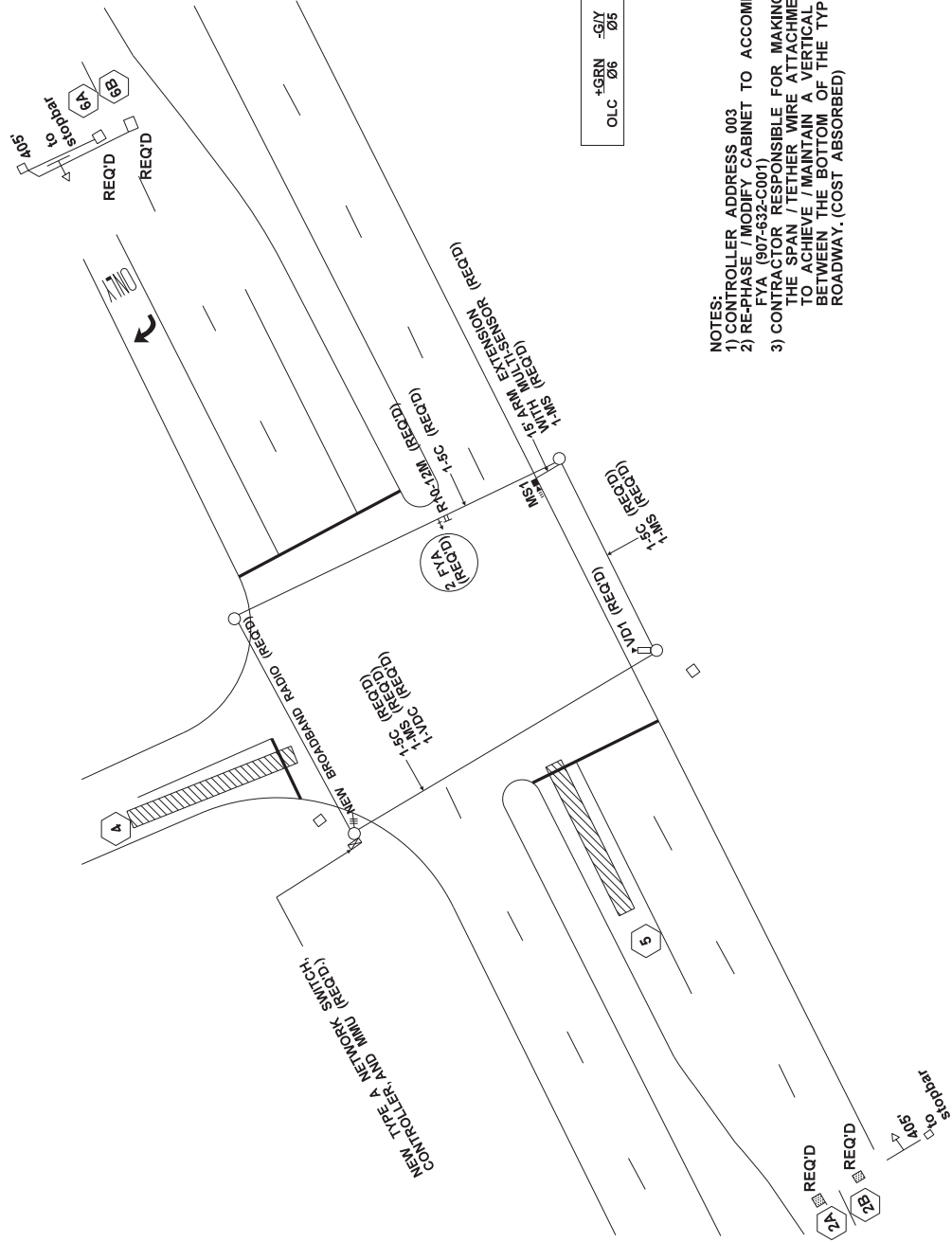
WORK REQUIRED

NUMBER	SIZE	TURN/CAMERA	AMP-CHANNEL	PERIMETER	LEAD-IN	LENGTH	COMMENTS	VIDEO	EXISTING	REQD
1	6' X 50'	VD1	1	24'	34'	58'	LOCATED 330' FROM STOP LINE	LOCATED 330' FROM STOP LINE	EXISTING	REQD
2A	6' X 6'	3	1	24'	19'	43'	LOCATED 330' FROM STOP LINE	LOCATED 330' FROM STOP LINE	EXISTING	REQD
2B	6' X 6'	3	1	24'	19'	43'	LOCATED 330' FROM STOP LINE	LOCATED 330' FROM STOP LINE	EXISTING	REQD
3A	6' X 50'	VD2	1	24'	19'	43'	LOCATED 330' FROM STOP LINE	LOCATED 330' FROM STOP LINE	EXISTING	REQD
3B	6' X 50'	VD2	1	24'	19'	43'	LOCATED 330' FROM STOP LINE	LOCATED 330' FROM STOP LINE	EXISTING	REQD
4A	6' X 50'	VD3	1	24'	19'	43'	LOCATED 330' FROM STOP LINE	LOCATED 330' FROM STOP LINE	EXISTING	REQD
4B	6' X 50'	VD3	1	24'	19'	43'	LOCATED 330' FROM STOP LINE	LOCATED 330' FROM STOP LINE	EXISTING	REQD
5	6' X 50'	VD4	1	24'	19'	43'	LOCATED 330' FROM STOP LINE	LOCATED 330' FROM STOP LINE	EXISTING	REQD
6A	6' X 6'	3	1	24'	16'	40'	LOCATED 330' FROM STOP LINE	LOCATED 330' FROM STOP LINE	EXISTING	REQD
6B	6' X 6'	3	1	24'	29'	53'	LOCATED 330' FROM STOP LINE	LOCATED 330' FROM STOP LINE	EXISTING	REQD

MISSISSIPPI DEPARTMENT OF TRANSPORTATION	
TRAFFIC SIGNAL	
SR 24 @ WENDY'S	
PROJ. NO.: NH-0014-01(075)	
COUNTY: PIKE	
FILE NAME: 134/SR 24 @ Wendy's.CDD	DESIGN TEAM
DATE	DATE
BY	REVISION
WORKING NUMBER TSI-2	
SHEET NUMBER 2002	

ADDENDUM

FMS CON: 107538 /301000
STATE PROJECT NO.
MISS. NH-0014-01(075)



OLC=LS11

N/U	1	2	3	4
N/U	5	6	7	8

2 & 6 MIN REL

FLASH:
2.6 - YELLOW
5 - NO FLASH
4 - RED

PREEMPTION
0D1 : 06
0D2 : 02 Ø5, OLC
0D3 : 04

- NOTES:
- 1) CONTROLLER ADDRESS 003
 - 2) RE-PHASE / MODIFY CABINET TO ACCOMMODATE FYA (907-632-C001)
 - 3) CONTRACTOR RESPONSIBLE FOR MAKING ADJUSTMENTS TO THE SPAN / TETHER WIRE ATTACHMENT HEIGHTS IN ORDER TO ACHIEVE / MAINTAIN A VERTICAL CLEARANCE OF 18 FEET BETWEEN THE BOTTOM OF THE TYPE 2 FYA HEAD AND THE ROADWAY. (COST ABSORBED)

WORK REQUIRED

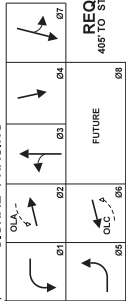
NUMBER	SIZE	DETECTOR	COMMENTS	PERMETER	LEAD-IN	LENGTH
2A	6' X 6'	MS1	RADAR LOCATED 405' FROM STOP LINE			
2B	6' X 6'	MS1	RADAR LOCATED 405' FROM STOP LINE			
4	6' X 50'	VD1				
5	6' X 50'	MS1				
6A	6' X 6'	2-1	LOCATED 405' FROM STOP LINE	24'	22'	48'
6B	6' X 6'	2-2	LOCATED 405' FROM STOP LINE	24'	27'	51'
TOTALS				48'	49'	97'

MISSISSIPPI DEPARTMENT OF TRANSPORTATION	
TRAFFIC SIGNAL	
SR 24 @ PARKLANE	
PROJECT NO.: NH-0014-01(075)	
COUNTY: PIKE	
WORKING NUMBER	FILE NAME: 135SR 24 @ Parklane.dgn
TST-3	DESIGN TEAM
SHEET NUMBER	DATE
2003	

ADDENDUM

PREEMPTION
0D1 : 1,6,OLA
0D2 : 2,5,OLC
0D3 : 7

SIGNAL PHASING



FLASH:
2.6 - YELLOW
1.5 - NO FLASH
OLC-LS11 3,4,7,OLA,OLC - RED

+GRN -GY RED
OLA Ø2 Ø1 3.0
OLC Ø6 Ø5 3.0

- NOTES:
- 1) CONTROLLER ADDRESS 005
 - 2) RE-PHASE / MODIFY CABINET TO ACCOMMODATE RTA (307-632-0001)
 - 3) SIGNAL HEADS SHALL BE LINED UP OVER THE CENTERLINE OF THE LANES. TYPE "A" HEADS SHALL BE DIRECTIONALLY VISIBLE THROUGH THE USE OF LOUVERS.
 - 4) CONTRACTOR RESPONSIBLE FOR MAKING ADJUSTMENTS TO THE SPAN / EITHER WIRE ATTACHMENT HEIGHTS IN ORDER TO ACHIEVE / MAINTAIN A VERTICAL CLEARANCE OF 18 FEET BETWEEN THE BOTTOM OF THE TYPE 2 RTA HEADS AND THE ROADWAY. (COST ABSORBED)

WORK REQUIRED

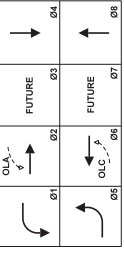
NUMBER	SIZE	URNS	COMMENTS	PERIMETER	LEAD-IN	LENGTH
1	6' X 6'	2-4-2	2-1	162'	63'	215'
2A	6' X 6'	3	1-1	24'	63'	87'
2B	6' X 6'	3	1-2	24'	52'	76'
3A	6' X 50'	2-4-2	3-1	162'	46'	207'
3B	6' X 50'	2-4-2	3-1	162'	34'	196'
4	6' X 50'	2-4-2	2-4	162'	55'	217'
5	6' X 50'	2-4-2	2-2	162'	66'	228'
6A	6' X 6'	3	1-3	24'	23'	47'
6B	6' X 6'	3	1-4	24'	18'	42'
7A	6' X 50'	2-4-2	3-2	162'	42'	204'
7B	6' X 50'	2-4-2	3-3	162'	30'	192'
7C	6' X 50'	2-4-2	3-4	162'	14'	176'
TOTALS				1,392'	495'	1,887'

MISSISSIPPI DEPARTMENT OF TRANSPORTATION	
TRAFFIC SIGNAL	
SR 24 @ LASALLE,	
US 51 / BROADWAY	
PROJ. NO.: NH-0014-01(075)	
COUNTY: PIKE	
WORKING NUMBER	FILE NAME: 137SR 24 @ Lasalle.dgn
TST-6	DESIGN TEAM
SHEET NUMBER	DATE
2006	

ADDENDUM

FMS CON: 107938/301000
STATE PROJECT NO.
MISS. NH-0014-01(075)

SIGNAL PHASING

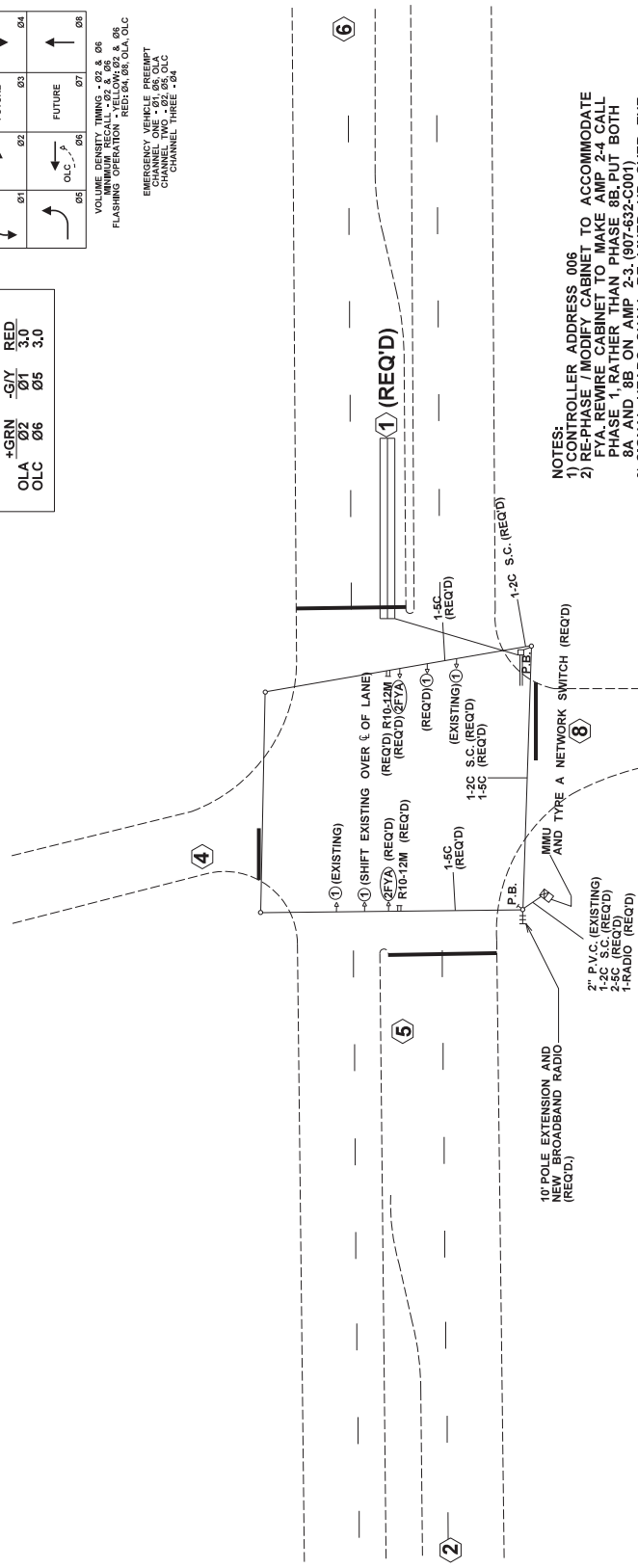


OLA=LS9
OLC=LS11

NO FLASH: Ø1, Ø5

VOLUME TRAFFIC: Ø1 & Ø2
MINIMUM RECALL: Ø2 & Ø3
FLASHING OPERATION: YELLOW, Ø2 & Ø3
EMERGENCY VEHICLE PREEMPT
CHANNEL TWO: Ø2, Ø5, OLC
CHANNEL THREE: Ø4

+GRN	-G/Y	RED
OLA Ø2	Ø1	3.0
OLC Ø6	Ø5	3.0



- NOTES:
- 1) CONTROLLER ADDRESS 006
 - 2) RE-PHASE / MODIFY CABINET TO ACCOMMODATE FYA. REWIRE CABINET TO MAKE AMP 2-4 CALL PHASE 1, RATHER THAN PHASE 8B. PUT BOTH 8A AND 8B ON AMP 2-3. (907-632-C001)
 - 3) SIGNAL HEADS SHALL BE LINED UP OVER THE CENTER OF THE LANES.
 - 4) CONTRACTOR RESPONSIBLE FOR MAKING ADJUSTMENTS TO THE SPAN / TETHER WIRE ATTACHMENT HEIGHTS IN ORDER TO ACHIEVE / MAINTAIN A VERTICAL CLEARANCE OF 18 FEET BETWEEN THE BOTTOM OF THE TYPE 2 FYA HEADS AND THE ROADWAY. (COST ABSORBED)

DETECTOR LOOP CHART (REQ'D)				
NUMBER	SIZE	URNS	AMP	PERIMETER
1	6'X50'	2-4-2	2-4	162'
				60'
				222'

MISSISSIPPI DEPARTMENT OF TRANSPORTATION	
TRAFFIC SIGNAL	
SR 24 @ MAGNOLIA ST.	
PROJ. NO.: NH-0014-01(075)	
COUNTY: PIKE	
FILE NAME: Magnolia_Street.dgn	DATE
DESIGN TEAM	2007