

**SECTION 905 -- PROPOSAL (CONTINUED)**

I (We) hereby certify by digital signature and electronic submission via Bid Express of the Section 905 proposal below, that all certifications, disclosures and affidavits incorporated herein are deemed to be duly executed in the aggregate, fully enforceable and binding upon delivery of the bid proposal. I (We) further acknowledge that this certification shall not extend to the bid bond or alternate security which must be separately executed for the benefit of the Commission. This signature does not cure deficiencies in any required certifications, disclosures and/or affidavits. I (We) also acknowledge the right of the Commission to require full and final execution on any certification, disclosure or affidavit contained in the proposal at the Commission's election upon award. Failure to so execute at the Commission's request within the time allowed in the Standard Specifications for execution of all contract documents will result in forfeiture of the bid bond or alternate security.

Bidder acknowledges receipt of and has added to and made a part of the proposal and contract documents the following addendum (addenda):

ADDENDUM NO. <u>  1  </u>	DATED <u>  3/22/2023  </u>	ADDENDUM NO. _____	DATED _____
ADDENDUM NO. _____	DATED _____	ADDENDUM NO. _____	DATED _____
ADDENDUM NO. _____	DATED _____	ADDENDUM NO. _____	DATED _____

Number	Description
1	Revised Bid Items; Revised or Added Plan Sheet Nos. 2, 10, 12, 8001, 8004-8005, 8022; Amendment EBSx Download Required.

TOTAL ADDENDA:   1    
(Must agree with total addenda issued prior to opening of bids)

Respectfully Submitted,

DATE \_\_\_\_\_

\_\_\_\_\_  
Contractor

BY \_\_\_\_\_  
Signature

TITLE \_\_\_\_\_

ADDRESS \_\_\_\_\_

CITY, STATE, ZIP \_\_\_\_\_

PHONE \_\_\_\_\_

FAX \_\_\_\_\_

E-MAIL \_\_\_\_\_

(To be filled in if a corporation)

Our corporation is chartered under the Laws of the State of \_\_\_\_\_ and the names, titles and business addresses of the executives are as follows:

_____ President	_____ Address
_____ Secretary	_____ Address
_____ Treasurer	_____ Address

The following is my (our) itemized proposal.

STP-2906-00(005)/ 106088301000

Union County(ies)

Revised 01/26/2016

Bridge Replacement on SR 178 over East Branch Lockes Creek (Bridge No. 55.3), known as Federal Aid Project No. STP-2906-00(005) / 106088301 in Union County.

Line No.	Item Code	Adj Code	Quantity	Units	Description [Fixed Unit Price]
<b>Roadway Items</b>					
0010	201-B001		7	Acre	Clearing and Grubbing
0020	202-A001		1	Lump Sum	Removal of Obstructions
0030	202-B007		5,920	Square Yard	Removal of Asphalt Pavement, All Depths
0040	202-B150		390	Linear Feet	Removal of Guard Rail Including Post, Blockouts & Hardware
0050	202-B191		89	Linear Feet	Removal of Pipe, 8" And Above
0060	202-B215		4	Each	Removal of Sign Including Post & Footing
0070	203-A001	(E)	9,548	Cubic Yard	Unclassified Excavation, FM, AH
0080	203-EX020	(E)	2,302	Cubic Yard	Borrow Excavation, AH, FME, Class B9
0090	203-F001	(E)	1,751	Cubic Yard	Channel Excavation, FM
0100	203-G001	(E)	1,000	Cubic Yard	Excess Excavation, FM, AH
0110	209-A005		8,626	Square Yard	Geotextile Stabilization, Type V, Non-Woven
0120	213-C001		4	Ton	Superphosphate
0130	216-A001		522	Square Yard	Solid Sodding
0140	217-A001		178	Square Yard	Ditch Liner
0150	219-A001		11	Thousand Gallon	Watering [\$20.00]
0160	220-A001		4	Acre	Insect Pest Control [\$30.00]
0170	221-A001	(S)	13	Cubic Yard	Concrete Paved Ditch
0180	223-A001		14	Acre	Mowing [\$50.00]
0190	225-A001		7	Acre	Grassing
0200	225-B001		4	Ton	Agricultural Limestone
0210	225-C001		14	Ton	Mulch, Vegetative Mulch
0220	226-A001		7	Acre	Temporary Grassing
0230	235-A001		50	Each	Temporary Erosion Checks
0240	237-A002		1,000	Linear Feet	Wattles, 20"
0250	239-A001		200	Linear Feet	Temporary Slope Drains
0260	246-B001		100	Each	Rockbags
0270	249-A001		200	Ton	Riprap for Erosion Control
0280	249-B001		62	Cubic Yard	Remove and Reset Riprap
0290	304-B001	(GT)	2,106	Ton	Granular Material, Class 3, Group C
0300	403-A002	(BA1)	736	Ton	12.5-mm, MT, Asphalt Pavement
0310	403-A005	(BA1)	1,017	Ton	19-mm, MT, Asphalt Pavement
0320	403-A014	(BA1)	725	Ton	9.5-mm, MT, Asphalt Pavement

Line No.	Item Code	Adj Code	Quantity	Units	Description [Fixed Unit Price]
0330	406-D001		1,893	Square Yard	Fine Milling of Bituminous Pavement, All Depths
0340	407-A001	(A2)	1,191	Gallon	Asphalt for Tack Coat
0350	413-E001		79	Linear Feet	Sawing and Sealing Transverse Joints in Asphalt Pavement
0360	423-A001		1	Mile	Rumble Strips, Ground In
0370	501-E001		82	Linear Feet	Expansion Joints, Without Dowels
0380	502-A001	(C)	165	Square Yard	Reinforced Cement Concrete Bridge End Pavement
0390	603-ALT003	(S)	48	Linear Feet	18" Type A Alternate Pipe
0400	603-ALT006	(S)	48	Linear Feet	24" Type A Alternate Pipe
0410	605-AA001	(S)	45	Square Yard	Geotextile for Subsurface Drainage, Type III
0420	605-O002	(S)	80	Linear Feet	4" Perforated Sewer Pipe for Underdrains, SDR 23.5
0430	605-P002	(S)	10	Linear Feet	4" Non-perforated Sewer Pipe for Underdrains, SDR 23.5
0440	605-W001	(GY)	3	Cubic Yard	Filter Material for Combination Storm Drain and/or Underdrains, Type A, FM
0450	606-B001		225	Linear Feet	Guard Rail, Class A, Type 1
0460	606-D022		4	Each	Guard Rail, Bridge End Section, Type I
0470	606-E002		4	Each	Guard Rail, Terminal End Section, Bi-Directional
0480	615-A024	(S)	40	Linear Feet	Concrete Bridge End Barrier, 37.5"
0490	617-A001		5	Each	Right-of-Way Marker
0500	618-A001		1	Lump Sum	Maintenance of Traffic
0510	619-A1003		11,200	Linear Feet	Temporary Traffic Stripe, Continuous White, Paint
0520	619-A2003		1,200	Linear Feet	Temporary Traffic Stripe, Continuous Yellow, Paint
0530	619-A4003		4,800	Linear Feet	Temporary Traffic Stripe, Skip Yellow, Paint
0540	619-A5002		1,732	Linear Feet	Temporary Traffic Stripe, Detail, Paint
0550	619-A6007		66	Square Feet	Temporary Traffic Stripe, Legend, Type 1 or 2 Tape
0560	619-D1001		157	Square Feet	Standard Roadside Construction Signs, Less than 10 Square Feet
0570	619-D2001		388	Square Feet	Standard Roadside Construction Signs, 10 Square Feet or More
0580	619-G4001		72	Linear Feet	Barricades, Type III, Double Faced
0590	619-G4005		48	Linear Feet	Barricades, Type III, Single Faced
0600	619-G5001		50	Each	Free Standing Plastic Drums
0610	619-G7001		12	Each	Warning Lights, Type "B"
0620	620-A001		1	Lump Sum	Mobilization
0640	626-C001		5,062	Linear Feet	6" Thermoplastic Double Drop Edge Stripe, Continuous White
0650	626-D002		2,303	Linear Feet	6" Thermoplastic Double Drop Traffic Stripe, Skip Yellow
0660	626-E002		500	Linear Feet	6" Thermoplastic Double Drop Traffic Stripe, Continuous Yellow
0670	626-G004		244	Linear Feet	Thermoplastic Double Drop Detail Stripe, White

Line No.	Item Code	Adj Code	Quantity	Units	Description [Fixed Unit Price]
0680	626-G005		622	Linear Feet	Thermoplastic Double Drop Detail Stripe, Yellow
0690	626-H001		39	Square Feet	Thermoplastic Double Drop Legend, White
0700	627-J001		15	Each	Two-Way Clear Reflective High Performance Raised Markers
0710	627-K001		5	Each	Red-Clear Reflective High Performance Raised Markers
0720	627-L001		106	Each	Two-Way Yellow Reflective High Performance Raised Markers
0730	630-A003		25	Square Feet	Standard Roadside Signs, Sheet Aluminum, 0.125" Thickness
0740	630-C003		36	Linear Feet	Steel U-Section Posts, 3.0 lb/ft
0750	630-C005		60	Linear Feet	Square Tube Posts, 2.0 lb/ft
0760	630-C1001		4	Linear Feet	Square Post Inner Sleeve
0770	630-F006		14	Each	Delineators, Guard Rail, White
0780	630-G005		4	Each	Type 3 Object Markers, OM-3R or OM-3L, Post Mounted
0790	699-A001		1	Lump Sum	Roadway Construction Stakes
0800	815-A007	(S)	753	Ton	Loose Riprap, Size 300
0810	815-F002	(S)	200	Ton	Sediment Control Stone
0820	907-234-A001		5,700	Linear Feet	Temporary Silt Fence
0830	907-234-C001		900	Linear Feet	Super Silt Fence
0840	907-619-E3001		2	Each	Changeable Message Sign
0850	907-899-A001		1	Lump Sum	Railway-Highway Provisions
<b>ALTERNATE GROUP AA NUMBER 1</b>					
0860	304-F001	(GT)	3,910	Ton	3/4" and Down Crushed Stone Base
<b>ALTERNATE GROUP AA NUMBER 2</b>					
0870	304-F002	(GT)	3,910	Ton	Size 610 Crushed Stone Base
<b>ALTERNATE GROUP AA NUMBER 3</b>					
0880	304-F003	(GT)	3,910	Ton	Size 825B Crushed Stone Base
<b>ALTERNATE GROUP BB NUMBER 1</b>					
0890	605-W002	(GY)	57	Cubic Yard	Filter Material for Combination Storm Drain and/or Underdrains, Type B, FM
<b>ALTERNATE GROUP BB NUMBER 2</b>					
0900	605-W003	(GY)	57	Cubic Yard	Filter Material for Combination Storm Drain and/or Underdrains, Type C, FM
<b>ALTERNATE GROUP CC NUMBER 1</b>					
0910	907-624-B002		400	Linear Feet	6" Inverted Profile Thermoplastic Traffic Stripe, Continuous White
0920	907-624-C001		200	Linear Feet	6" Inverted Profile Thermoplastic Traffic Stripe, Skip Yellow
<b>ALTERNATE GROUP CC NUMBER 2</b>					
0930	628-H001		400	Linear Feet	6" High Performance Cold Plastic Traffic Stripe, Continuous White
0940	628-I002		200	Linear Feet	6" High Performance Cold Plastic Traffic Stripe, Skip Yellow

**Bridge Items**

Line No.	Item Code	Adj Code	Quantity	Units	Description [Fixed Unit Price]
0950	203-F001	(E)	371	Cubic Yard	Channel Excavation, FM
0960	501-K001		719	Square Yard	Transverse Grooving
0970	803-P001	(S)	825	Linear Feet	24" Steel Pipe Piling, Wall Thickness 0.500"
0980	803-P007	(S)	850	Linear Feet	18" Steel Pipe Piling, Wall Thickness 0.500"
0990	804-C193	(S)	715	Linear Feet	120' Prestressed Concrete Beam, Type FIB-45
1000	804-C210	(S)	472	Linear Feet	40' Prestressed Concrete Beam, Type MFIB-25
1010	805-A001	(S)	74,694	Pounds	Reinforcement
1020	805-C001	(S)	3,030	Pounds	Reinforcement, Corrosion Resistant
1030	813-A004	(S)	405	Linear Feet	Concrete Railing, 36"
1040	815-A007	(S)	1,567	Ton	Loose Riprap, Size 300
1050	815-E001	(S)	1,255	Square Yard	Geotextile under Riprap
1060	907-803-B001	(S)	1	Each	Conventional Static Pile Load Test [\$5,000.00]
1070	907-803-I004	(S)	2	Each	PDA Test Pile, Steel Pipe Pile
1080	907-803-J001	(S)	2	Each	Pile Restrike
1090	907-804-A001	(S)	226	Cubic Yard	Bridge Concrete, Class BDx
1100	907-804-A002	(S)	160	Cubic Yard	Bridge Concrete, Class AA
1110	907-823-A001		78	Linear Feet	Preformed Joint Seal, Type I



**ADDENDUM**

STATE	PROJECT NO.
MISS	STP-2906-00(005)

**SUMMARY OF QUANTITIES (SHEET 1)**

PAY ITEM NO.	PAY ITEM	UNIT	UNTON : 106088-301000	
			Prelim	Final
201-B001	Clearing and Grubbing	ACRE	7	
202-A001	Removal of Obstructions	LS	1	①
202-B007	Removal of Asphalt Pavement, All Depths	SY	5,920	⑩
202-B150	Removal of Guard Rail Including Post, Blockouts & Hardware	LF	390	②
202-B191	Removal of Pipe, 8" And Above	LF	89	
202-B215	Removal of Sign Including Post & Footing	EA	4	
203-A001	Unclassified Excavation, FM, AH	CY	9,548	
203-EX020	Borrow Excavation, AH, FME, Class B9	CY	2,302	⑥
203-F001	Channel Excavation, FM	CY	1,751	⑭
203-G001	Excess Excavation, FM, AH	CY	1,000	④
209-A005	Geotextile Stabilization, Type V, Non-Woven	SY	8,626	
213-C001	Superphosphate	TON	4	
216-A001	Solid Sodding	SY	522	⑪
217-A001	Ditch Liner	SY	178	⑫
219-A001	Watering	KGAL	11	
220-A001	Insect Pest Control	ACRE	4	
221-A001	Concrete Paved Ditch	CY	13	③
223-A001	Mowing	ACRE	14	
225-A001	Grassing	ACRE	7	
225-B001	Agricultural Limestone	TON	4	
225-C001	Mulch, Vegetative Mulch	TON	14	
226-A001	Temporary Grassing	ACRE	7	
907-234-A001	Temporary Silt Fence	LF	5,700	④
907-234-C001	Super Silt Fence	LF	900	④
235-A001	Temporary Erosion Checks	EA	50	④
237-A002	Wattles, 20"	LF	1,000	④
239-A001	Temporary Slope Drains	LF	200	④
246-B001	Rockbags	EA	100	④
249-A001	Riprap for Erosion Control	TON	200	④
249-B001	Remove and Reset Riprap	CY	62	⑬
304-B001	Granular Material, Class 3, Group C	TON	2,106	⑤ ⑦
304-F001	3/4" and Down Crushed Stone Base	TON	3,910	⑤
304-F002	OR Size 610 Crushed Stone Base	TON	3,910	⑤
304-F003	OR Size 825B Crushed Stone Base	TON	3,910	⑤ ①
403-A002	12.5-mm, MT, Asphalt Pavement	TON	736	⑨
403-A005	19-mm, MT, Asphalt Pavement	TON	1,017	
403-A014	9.5-mm, MT, Asphalt Pavement	TON	725	⑧
406-D001	Fine Milling of Bituminous Pavement, All Depths	SY	1,893	
407-A001	Asphalt for Tack Coat	GAL	1,191	

- ① FOR REMOVAL OF EXISTING BRIDGE #55.3 (8 SPANS @ 20' FOR TOTAL OF 160' ) CAST-IN-PLACE CONCRETE DECK ON TIMBER PILING.
- ② INCLUDES THE REMOVAL OF BRIDGE END SECTIONS, TERMINAL END SECTIONS, POST,BLOCKOUTS, HARDWARE, ETC.(AS MEASURED FROM BEGINNING OF BRIDGE END SECTION TO TERMINAL END SECTION) AND OBJECT MARKERS.
- ③ 11 C.Y. FOR TYPE "B" FLUMES AND 1.45 C.Y. FOR EDGE DRAIN OUTLET AT BRIDGE END PAVEMENT.
- ④ TO BE USED AS DIRECTED BY THE ENGINEER.
- ⑤ QUANTITY INCLUDES 20% INCREASE
- ⑥ 25% SHRINKAGE FACTOR WAS USE.
- ⑦ INCLUDES 206 TONS FOR RAMPS ON SR 178 SEE EQ-4.
- ⑧ INCLUDES 3.943 TONS FOR RAMPS ON SR178 SEE EQ-4.
- ⑨ INCLUDES 5.266 TONS FOR RAMPS ON SR 178 SEE EQ-4.
- ⑩ INCLUDES ANY SOIL CEMENT UNDER EXISTING ROADWAY.
- ⑪ INCLUDES 72 S.Y. AT PAVED FLUMES, 450 S.Y. FOR SLOPE RIGHT SIDE ROADWAY STA.477+50 TO 480+00
- ⑫ FOR SOLID SODDING
- ⑬ BASED OFF OF 200 TONS OF RIPRAP FOR EROSION CONTROL.
- ⑭ SEE BRIDGE SHEET WK.NO. 3 OF 18 FOR BANK STABILIZATION.



<b>MISSISSIPPI DEPARTMENT OF TRANSPORTATION</b>	
<b>SUMMARY OF QUANTITIES</b>	
	Working Number <b>SQ-1</b>
PROJ NO: STP-2906-00(005) COUNTY: UNION	
FILENAME: SQS106088-301000 Design Team <small>smith</small> Checked Date 2-09-2022	
Sheet Number <b>10</b>	Revision
DATE	REVISION
03/10/2023	REVISED QUANTITY, ADD PAY ITEM

**ADDENDUM**


STATE	PROJECT NO.
MISS	STP-2906-00(005)

**SUMMARY OF QUANTITIES (SHEET 3)**

PAY ITEM NO.	PAY ITEM	UNIT	UNTON : 106088-301000	
			Prelim	Final
626-C001	6" Thermoplastic Double Drop Edge Stripe, Continuous White	LF	5,062	
626-D002	6" Thermoplastic Double Drop Traffic Stripe, Skip Yellow	LF	2,303	
626-E002	6" Thermoplastic Double Drop Traffic Stripe, Continuous Yellow	LF	500	
626-G004	Thermoplastic Double Drop Detail Stripe, White	LF	244	
626-G005	Thermoplastic Double Drop Detail Stripe, Yellow	LF	622	
626-H001	Thermoplastic Double Drop Legend, White	SF	39	
627-J001	Two-Way Clear Reflective High Performance Raised Markers	EA	15	
627-K001	Red-Clear Reflective High Performance Raised Markers	EA	5	
627-L001	Two-Way Yellow Reflective High Performance Raised Markers	EA	106	
630-A003	Standard Roadside Signs, Sheet Aluminum, 0.125" Thickness	SF	25	
630-C003	Steel U-Section Posts, 3.0 lb/ft	LF	36	③
630-C005	Square Tube Posts, 2.0 lb/ft	LF	60	③
630-C1001	Square Post Inner Sleeve	LF	4	④
630-F006	Delineators, Guard Rail, White	EA	14	
630-G005	Type 3 Object Markers, OM-3R or OM-3L, Post Mounted	EA	4	③
699-A001	Roadway Construction Stakes	LS	1	
815-A007	Loose Riprap, Size 300	TON	753	②
815-F002	Sediment Control Stone	TON	200	①
907-899-A001	Railway-Highway Provisions	LS	1	④

- ① TO BE USED AS DIRECTED BY THE ENGINEER.
- ② SEE EQ-5 FOR LOCATION.
- ③ SEE WK.NO. PSP-1 FOR DETAILS.
- ④ SEE WK.NO. SSH-2.0 FOR DETAILS.



<b>MISSISSIPPI DEPARTMENT OF TRANSPORTATION</b> <b>SUMMARY OF QUANTITIES</b>		
PROJ NO: STP-2906-00(005) COUNTY: UNION		Working Number <b>SQ-3</b>
FILENAME: SQS106088-301000		Sheet Number <b>12</b>
03/10/2022 REVISD QUANTITY, ADD PAY ITEM	Date 2/09/2022	Design Team smth
03/10/2022 REVISD QUANTITY, ADD PAY ITEM	Date 2/09/2022	Checked smth



# ADDENDUM

DESCRIPTION OF SHEETS WORKING NO(S). SHEET NO(S).

DETAILED INDEX (BRIDGE)	DI-BR-1	8001
SUMMARY OF QUANTITIES (BRIDGE ITEMS)	50-BR-1	8002
SR 178 ACROSS EAST BRANCH LOCKES CREEK AT STA. 467+36.85	1 OF 18	8003
ESTIMATED QUANTITIES AND GENERAL NOTES	2 OF 18	8004
SR 178 ACROSS EAST BRANCH LOCKES CREEK BRIDGE LAYOUT	3 OF 18	8005
SR 178 ACROSS EAST BRANCH LOCKES CREEK BRIDGE FOUNDATION PLAN	4 OF 18	8006
END BENT NOS. 1 & 4 DETAILS	5 OF 18	8007
END BENT DETAILS	6 OF 18	8008
INT. BENT NO. 2 DETAILS	7 OF 18	8009
INT. BENT NO. 3 DETAILS	8 OF 18	8010
INT. BENT DETAILS	9 OF 18	8011
40 FT. SPAN NO. 1 & 3 & 120 FT. SPAN NO. 2	10 OF 18	8012
40 FT. SPAN DETAILS	11 OF 18	8013
120 FT. SPAN DETAILS	12 OF 18	8014
ADDITIONAL SPAN DETAILS	13 OF 18	8015
MISCELLANEOUS SPAN DETAILS	14 OF 18	8016
40 FT. BEAM NO. 40-1 DETAILS TYPE MF1B-25	15 OF 18	8017
120 FT. BEAM NO. 120-1 DETAILS TYPE F1B-45	16 OF 18	8018
20° R.F. SKEW BEAM END DETAILS	17 OF 18	8019
BEARING PAD LAYOUT & BEAM END DETAILS	18 OF 18	8020
BEARING DETAILS		
SR 178 ACROSS EAST BRANCH LOCKES CREEK AT STA. 467+36.85		
GENERALIZED SOIL PROFILE	GSP-1	8021
BRIDGE EROSION CONTROL PLANS		
EROSION CONTROL ELEVATION	ECBR-1	8022
EROSION CONTROL PLAN	ECBR-2	8023
RAILING DETAILS		
3'-0" RAILING DETAILS	RD-36A	8024
3'-0" RAILING DETAILS (SLOTTED DRAIN)	RD-36B	8025

BRIDGE DIVISION		
REVISIONS		
DATE	SHEET NO.	BY
3/16/23	8004-8005, & 8022	AWH



DESIGNED BY: ALEX HAWKINS  
 DETAILED BY: ALEX HAWKINS  
 CHECKED BY: JOSH FOSTER  
 DATE: 2022-10-03

FMS CON: 106088/301000  
 PROJECT NO.: STP-2906-00(005)  
 COUNTRY: UNION

BRIDGE AT STA. 467+36.85  
 SR 178 ACROSS  
 EAST BRANCH LOCKES CREEK  
 DETAILED INDEX

WK. NO.  
 DI-BR-1  
 SHEET NO.  
 8001

# ADDENDUM

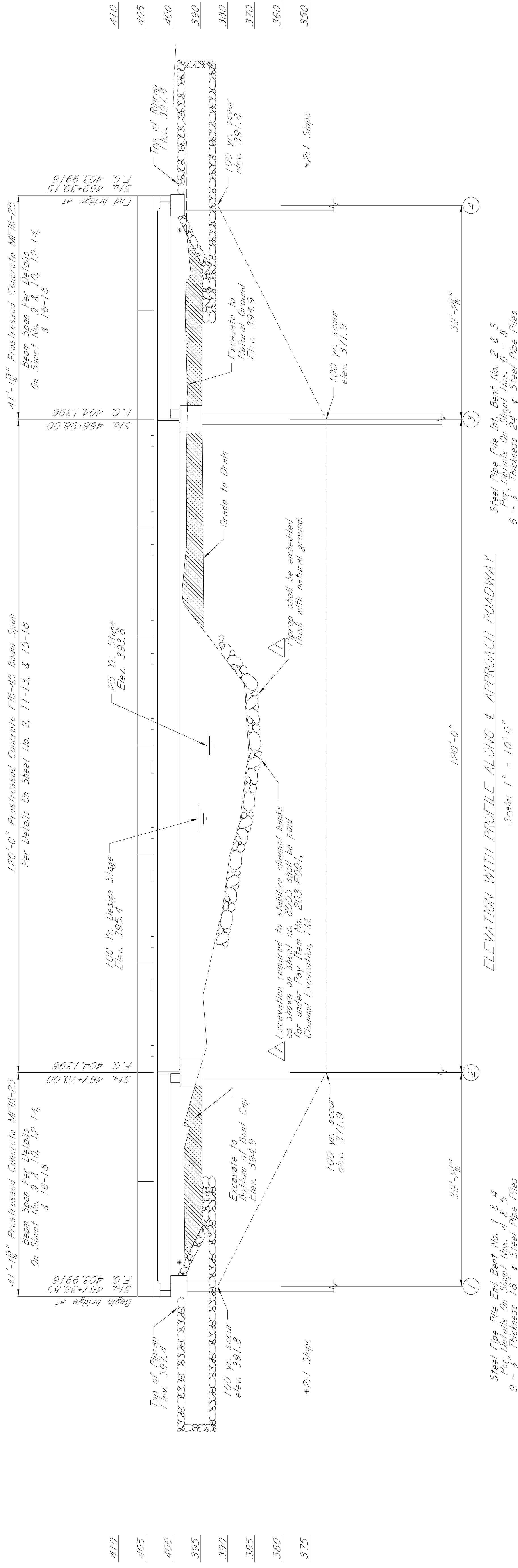
V.P.C. Sta. 467+26.00  
V.P.C. Elev. 403.9400

V.P.I. Sta. 468+38.00  
V.P.I. Elev. 404.5000  
F.G. Elev. 404.2200

V.P.T. Sta. 469+50.00  
V.P.T. Elev. 403.9400

## 224 FT. VERTICAL CURVE

Total Length of Bridge = 202'-3 3/8"

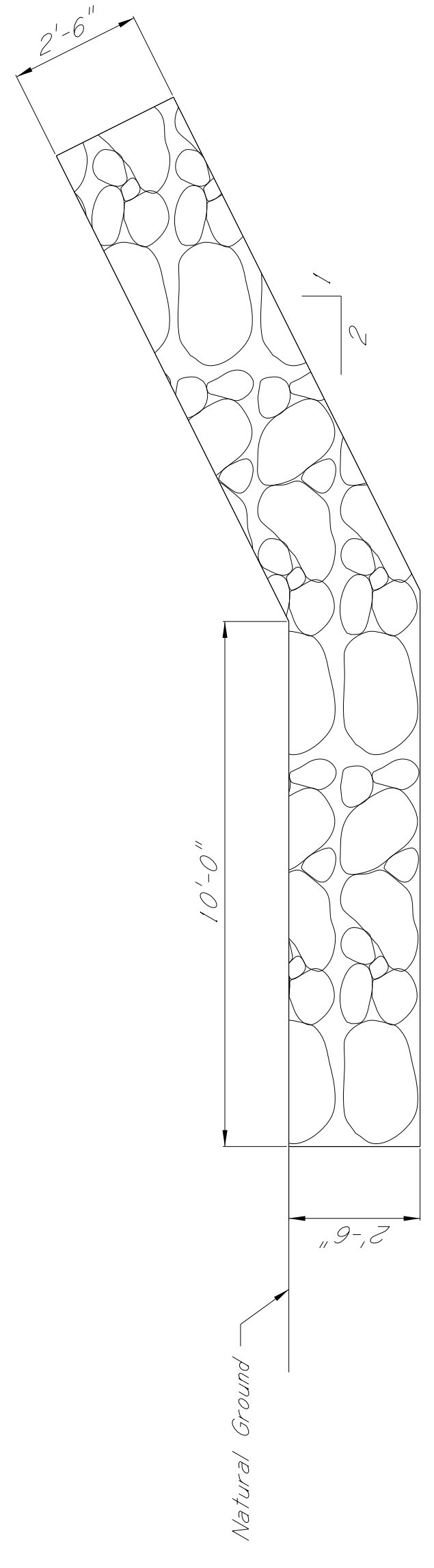


△ NOTE: Existing roadway embankment shall be removed to natural ground elevation 394.9' under the proposed bridge and shall be shown accordingly on all plans. This work is included under the Roadway pay item Excess Excavation.

NOTE:  
Geotextile fabric is required under all riprap. All riprap and geotextile fabric shown on the bridge plans are included in the bridge quantities.

DESIGN DATA:  
Specifications . . . . . A.A.S.H.T.O., LRFD 9th Edition, 2020  
Loadings . . . . . HL-93  
Roadway width . . . . . 36'-0" Gutter to gutter  
Concrete . . . . . Class "AA" (4,000 p.s.i.)  
Class "BDX" (4,500 p.s.i.)  
Stay-in-Place metal forms . . . 18lbs./ft<sup>2</sup> (between flanges)  
Seismic Performance Zone . . . 2  
Seismic Soil Site Class . . . . . C  
Seismic Operational Class . . . . . Other

Bent no.	Elevation
1	390.5
2	370.6
3	370.6
4	390.5



DRAINAGE DATA:  
Drainage area . . . . . 4.11 sq. mi.  
0.25 (U.S.G.S.) . . . . . 1,560 c.f.s.  
Effective area . . . . . 396.6 sq. ft.  
0.100 (U.S.G.S.) . . . . . 1,970 c.f.s.

DATE	REVISION	BY
3/16/23	Revised and added notes	AWH

WK. NO. 2 OF 18  
SHEET NO. 8004

BRIDGE AT STA. 467+36.85  
SR 178 ACROSS  
EAST BRANCH LOCKS CREEK  
LAYOUT

FMS CON: 106088/301000  
PROJECT NO.: STP-2906-00(005)  
COUNTRY: UNION

DESIGNED BY: ALEX HAWKINS  
DETAILED BY: ALEX HAWKINS  
CHECKED BY: JOSH FOSTER  
DATE: 2022-10-03





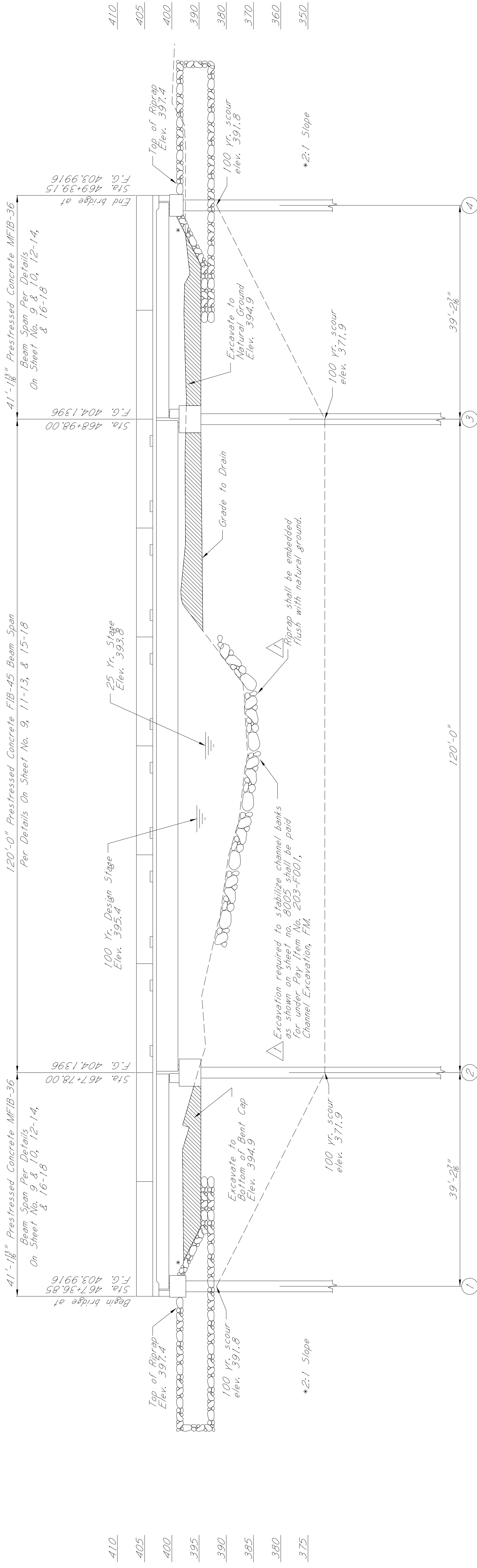
**ADDENDUM**

V.P.C. Sta. 467+26.00  
V.P.C. Elev. 403.9400

V.P.I. Sta. 468+38.00  
V.P.I. Elev. 404.5000  
F.G. Elev. 404.2200

V.P.T. Sta. 469+50.00  
V.P.T. Elev. 403.9400

**224 FT. VERTICAL CURVE**  
Total Length of Bridge = 202'-3 3/8"

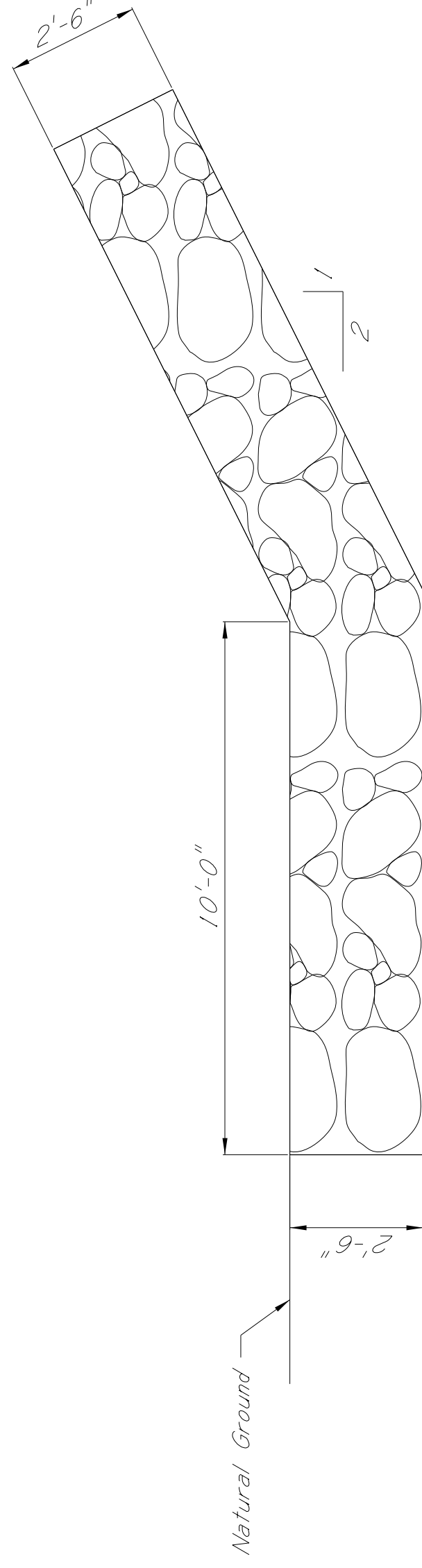


△ NOTE: Existing roadway embankment shall be removed to natural ground elevation 394.9' under the proposed bridge and shall be shown accordingly on all plans. This work is included under the Roadway pay item Excess Excavation.

△ NOTE: Geotextile fabric is required under all riprap. All riprap and geotextile fabric shown on the bridge plans are included in the bridge quantities.

△ NOTE:

1. No dirt shall be pushed into the creek.
2. If a platform for working is needed, then riprap may be used.
3. Minimize disturbance for working is needed, then riprap may be used.
4. If the bent is in close proximity to the banks, then riprap shall be placed prior to pile driving.
5. Riprap shall be placed on slopes immediately after pile driving.
6. Clearing should be kept to a minimum and grubbing only where required.
7. Turbidity curtain may be required.



500 Year Scour Elevations	
Bent no.	Elevation
1	390.5
2	370.6
3	370.6
4	390.5

**DRAINAGE DATA:**  
Drainage area . . . . . 4.11 sq. mi.  
0.25 (U.S.G.S.) . . . . . 1,560 c.f.s.  
Effective area . . . . . 396.6 sq. ft.  
0.100 (U.S.G.S.) . . . . . 1,970 c.f.s.

DATE	REVISION	BY
3/15/23	Revised and added notes	AWH

**BRIDGE AT STA. 467+36.85  
EROSION CONTROL  
ELEVATION**

FMS CON: 106088/301000

PROJECT NO.: STP-2906-00(005)

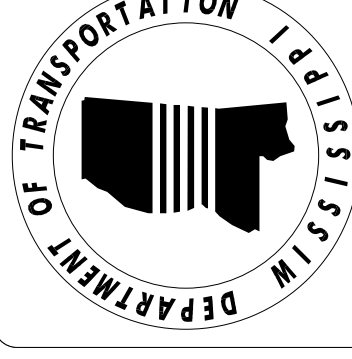
COUNTRY: UNION

DESIGNED BY: ALEX HAWKINS

DETAILED BY: ALEX HAWKINS

CHECKED BY: JOSH FOSTER

DATE: 2022-10-03



WK. NO.  
EC-BR-1

SHEET NO.  
8022