

**SECTION 905 -- PROPOSAL (CONTINUED)**

I (We) hereby certify by digital signature and electronic submission via Bid Express of the Section 905 proposal below, that all certifications, disclosures and affidavits incorporated herein are deemed to be duly executed in the aggregate, fully enforceable and binding upon delivery of the bid proposal. I (We) further acknowledge that this certification shall not extend to the bid bond or alternate security which must be separately executed for the benefit of the Commission. This signature does not cure deficiencies in any required certifications, disclosures and/or affidavits. I (We) also acknowledge the right of the Commission to require full and final execution on any certification, disclosure or affidavit contained in the proposal at the Commission's election upon award. Failure to so execute at the Commission's request within the time allowed in the Standard Specifications for execution of all contract documents will result in forfeiture of the bid bond or alternate security.

Bidder acknowledges receipt of and has added to and made a part of the proposal and contract documents the following addendum (addenda):

ADDENDUM NO. <u>  1  </u>	DATED <u>  4/19/2023  </u>	ADDENDUM NO. _____	DATED _____
ADDENDUM NO. _____	DATED _____	ADDENDUM NO. _____	DATED _____
ADDENDUM NO. _____	DATED _____	ADDENDUM NO. _____	DATED _____

Number	Description
1	Revised Bid Items; Revised or Added Plan Sheet Nos. 2,14-15, 17-18; Amendment EBSx Download Required.

TOTAL ADDENDA:   1    
(Must agree with total addenda issued prior to opening of bids)

Respectfully Submitted,

DATE \_\_\_\_\_

\_\_\_\_\_  
Contractor

BY \_\_\_\_\_  
Signature

TITLE \_\_\_\_\_

ADDRESS \_\_\_\_\_

CITY, STATE, ZIP \_\_\_\_\_

PHONE \_\_\_\_\_

FAX \_\_\_\_\_

E-MAIL \_\_\_\_\_

(To be filled in if a corporation)

Our corporation is chartered under the Laws of the State of \_\_\_\_\_ and the names, titles and business addresses of the executives are as follows:

_____	President	Address
-------	-----------	---------

_____	Secretary	Address
-------	-----------	---------

_____	Treasurer	Address
-------	-----------	---------

The following is my (our) itemized proposal.

BR-0054-02(025)/ 106113302000 & BR-0054-02(025)/ 106113303000  
Copiah & Hinds County(ies)

Revised 01/26/2016

Bridge Replacement on SR 27 over Little White Oak Creek (Bridge No. 93.1), known as Federal Aid Project Nos. BR-0054-02(025) / 106113302 & 303 in Copiah & Hinds Counties.

Line No.	Item Code	Adj Code	Quantity	Units	Description [Fixed Unit Price]
<b>Roadway Items</b>					
0010	201-B001		7	Acre	Clearing and Grubbing
0020	202-A001		1	Lump Sum	Removal of Obstructions
0030	202-B007		6,348	Square Yard	Removal of Asphalt Pavement, All Depths
0040	202-B018		2	Each	Removal of Box Culvert
0050	202-B158		516	Linear Feet	Removal of Guard Rail, Including Rails, Posts and Terminal Ends
0060	202-B191		21	Linear Feet	Removal of Pipe, 8" And Above
0070	202-B240		2,000	Linear Feet	Removal of Traffic Stripe
0080	203-A001	(E)	4,353	Cubic Yard	Unclassified Excavation, FM, AH
0090	203-EX021	(E)	21,546	Cubic Yard	Borrow Excavation, AH, FME, Class B9-6
0100	203-F001	(E)	3,556	Cubic Yard	Channel Excavation, FM
0110	203-G001	(E)	13,312	Cubic Yard	Excess Excavation, FM, AH
0120	206-A001	(S)	835	Cubic Yard	Structure Excavation
0130	206-B001	(E)	82	Cubic Yard	Select Material for Undercuts, Contractor Furnished, FM
0140	209-A005		3,100	Square Yard	Geotextile Stabilization, Type V, Non-Woven
0150	213-C001		5	Ton	Superphosphate
0160	216-A001		98	Square Yard	Solid Sodding
0170	217-A001		359	Square Yard	Ditch Liner
0180	219-A001		2	Thousand Gallon	Watering [\$20.00]
0190	220-A001		5	Acre	Insect Pest Control [\$30.00]
0200	221-A001	(S)	11	Cubic Yard	Concrete Paved Ditch
0210	223-A001		18	Acre	Mowing [\$50.00]
0220	224-A001		196	Square Yard	Soil Reinforcing Mat
0230	225-A001		9	Acre	Grassing
0240	225-B001		27	Ton	Agricultural Limestone
0250	225-C001		19	Ton	Mulch, Vegetative Mulch
0260	226-A001		9	Acre	Temporary Grassing
0270	229-A001		264	Square Yard	Erosion Mat
0280	237-A002		260	Linear Feet	Wattles, 20"
0290	246-B002		520	Linear Feet	Rockbags
0300	247-A001		2	Each	Temporary Stream Diversion
0310	249-A001		260	Ton	Riprap for Erosion Control
0320	304-A005	(GY)	2,300	Cubic Yard	Granular Material, LVM, Class 5, Group D

Line No.	Item Code	Adj Code	Quantity	Units	Description [Fixed Unit Price]
0330	403-A001	(BA1)	750	Ton	12.5-mm, HT, Asphalt Pavement
0340	403-A004	(BA1)	1,695	Ton	19-mm, HT, Asphalt Pavement
0350	403-A013	(BA1)	532	Ton	9.5-mm, HT, Asphalt Pavement
0370	403-D001	(BA1)	494	Ton	12.5-mm, HT, Asphalt Pavement, Polymer Modified
0380	403-D007	(BA1)	669	Ton	9.5-mm, HT, Asphalt Pavement, Polymer Modified
0390	406-D001		1,000	Square Yard	Fine Milling of Bituminous Pavement, All Depths
0400	407-A001	(A2)	1,885	Gallon	Asphalt for Tack Coat
0410	408-A002	(A3)	2,197	Gallon	Asphalt for Prime Coat, Cut-Back MC-70 or Emulsified EA-1
0420	413-E001		86	Linear Feet	Sawing and Sealing Transverse Joints in Asphalt Pavement
0430	423-A001		2	Mile	Rumble Strips, Ground In
0440	501-K001		27	Square Yard	Transverse Grooving
0450	502-A001	(C)	184	Square Yard	Reinforced Cement Concrete Bridge End Pavement
0460	601-A001	(S)	310	Cubic Yard	Class "B" Structural Concrete
0470	602-A001	(S)	58,934	Pounds	Reinforcing Steel
0480	603-ALT016	(S)	112	Linear Feet	48" Type A Alternate Pipe
0490	603-CA131	(S)	104	Linear Feet	84" Reinforced Concrete Pipe, Class III
0500	605-AA001	(S)	70	Square Yard	Geotextile for Subsurface Drainage, Type III
0510	605-T001	(S)	88	Linear Feet	4" Perforated Pipe for Underdrains
0520	605-U001	(S)	36	Linear Feet	4" Non-perforated Pipe for Underdrains
0530	605-W001	(GY)	5	Cubic Yard	Filter Material for Combination Storm Drain and/or Underdrains, Type A, FM
0540	606-B001		250	Linear Feet	Guard Rail, Class A, Type 1
0550	606-D022		4	Each	Guard Rail, Bridge End Section, Type I
0560	606-E005		4	Each	Guard Rail, Terminal End Section, Flared
0570	615-A024	(S)	40	Linear Feet	Concrete Bridge End Barrier, 37.5"
0580	617-A001		34	Each	Right-of-Way Marker
0590	618-A001		1	Lump Sum	Maintenance of Traffic
0600	618-C001		1	Lump Sum	Construction and Removal of Detour Bridge
0610	618-E001		1,700	Linear Feet	Detour Bridge Piling
0620	618-F001		1	Lump Sum	Detour Bridge PDA Test Pile
0630	619-A1002		10,200	Linear Feet	Temporary Traffic Stripe, Continuous White
0640	619-A2002		10,110	Linear Feet	Temporary Traffic Stripe, Continuous Yellow
0650	619-A2008		1,950	Linear Feet	Temporary Traffic Stripe, Continuous Yellow, Type 1 or 2 Tape
0660	619-A4001		3,500	Linear Feet	Temporary Traffic Stripe, Skip Yellow
0670	619-A5003		2,625	Linear Feet	Temporary Traffic Stripe, Detail, Type 1 Tape

Line No.	Item Code	Adj Code	Quantity	Units	Description [Fixed Unit Price]
0680	619-C7001		48	Each	Two-Way Yellow Reflective High Performance Raised Marker
0690	619-D1001		114	Square Feet	Standard Roadside Construction Signs, Less than 10 Square Feet
0700	619-D2001		348	Square Feet	Standard Roadside Construction Signs, 10 Square Feet or More
0710	619-F3001		16	Each	Delineators, Guard Rail, White
0720	619-G4001		24	Linear Feet	Barricades, Type III, Double Faced
0730	619-G4005		48	Linear Feet	Barricades, Type III, Single Faced
0740	619-G5001		53	Each	Free Standing Plastic Drums
0750	619-G7001		8	Each	Warning Lights, Type "B"
0760	619-K1001		100	Linear Feet	Installation and Removal of Guard Rail, Type I, Class A
0770	619-K2001		4	Each	Installation and Removal of Guard Rail, Bridge End Section
0780	619-K4001		4	Each	Installation and Removal of Guardrail, Terminal End Section
0790	620-A001		1	Lump Sum	Mobilization
0800	626-C001		5,124	Linear Feet	6" Thermoplastic Double Drop Edge Stripe, Continuous White
0810	626-D002		1,775	Linear Feet	6" Thermoplastic Double Drop Traffic Stripe, Skip Yellow
0820	626-E002		3,059	Linear Feet	6" Thermoplastic Double Drop Traffic Stripe, Continuous Yellow
0830	627-L001		35	Each	Two-Way Yellow Reflective High Performance Raised Markers
0840	630-A001		6	Square Feet	Standard Roadside Signs, Sheet Aluminum, 0.080" Thickness
0850	630-A003		37	Square Feet	Standard Roadside Signs, Sheet Aluminum, 0.125" Thickness
0860	630-C003		117	Linear Feet	Steel U-Section Posts, 3.0 lb/ft
0870	630-F006		18	Each	Delineators, Guard Rail, White
0880	630-G005		4	Each	Type 3 Object Markers, OM-3R or OM-3L, Post Mounted
0890	699-A001		1	Lump Sum	Roadway Construction Stakes
0900	815-A007	(S)	3,341	Ton	Loose Riprap, Size 300
0910	815-E001	(S)	2,600	Square Yard	Geotextile under Riprap
0920	907-234-C001		2,600	Linear Feet	Super Silt Fence
0930	907-234-F001		472	Linear Feet	Turbidity Barrier
0940	907-630-PP002		12	Square Feet	Roadside Directional Signs, Sheet Aluminum, 0.125" Thickness, Ground Mounted
<b>ALTERNATE GROUP AA NUMBER 1</b>					
0950	304-H001	(GY)	840	Cubic Yard	3/4" and Down Crushed Stone Base, LVM
<b>ALTERNATE GROUP AA NUMBER 2</b>					
0960	304-H002	(GY)	840	Cubic Yard	Size 610 Crushed Stone Base, LVM
<b>ALTERNATE GROUP AA NUMBER 3</b>					
0970	304-H003	(GY)	840	Cubic Yard	Size 825B Crushed Stone Base, LVM
<b>ALTERNATE GROUP BB NUMBER 1</b>					

Line No.	Item Code	Adj Code	Quantity	Units	Description [Fixed Unit Price]
0980	605-W002	(GY)	66	Cubic Yard	Filter Material for Combination Storm Drain and/or Underdrains, Type B, FM
<b>ALTERNATE GROUP BB NUMBER 2</b>					
0990	605-W003	(GY)	66	Cubic Yard	Filter Material for Combination Storm Drain and/or Underdrains, Type C, FM
<b>Bridge Items</b>					
1000	501-K001		889	Square Yard	Transverse Grooving
1010	803-P001	(S)	855	Linear Feet	24" Steel Pipe Piling, Wall Thickness 0.500"
1020	803-P007	(S)	1,260	Linear Feet	18" Steel Pipe Piling, Wall Thickness 0.500"
1030	804-C192	(S)	694	Linear Feet	100' Prestressed Concrete Beam, Type FIB-36
1040	804-C208	(S)	833	Linear Feet	60' Prestressed Concrete Beam, Type FIB-36
1050	805-A001	(S)	72,602	Pounds	Reinforcement
1060	805-C001	(S)	3,028	Pounds	Reinforcement, Corrosion Resistant
1070	813-A004	(S)	445	Linear Feet	Concrete Railing, 36"
1080	815-A007	(S)	1,514	Ton	Loose Riprap, Size 300
1090	815-E001	(S)	894	Square Yard	Geotextile under Riprap
1100	907-803-B001	(S)	1	Each	Conventional Static Pile Load Test [\$5,000.00]
1110	907-803-I004	(S)	2	Each	PDA Test Pile, Steel Pipe Pile
1120	907-803-J001	(S)	2	Each	Pile Restrike
1130	907-804-A001	(S)	291	Cubic Yard	Bridge Concrete, Class BDx
1140	907-804-A002	(S)	162	Cubic Yard	Bridge Concrete, Class AA
1150	907-823-A001		85	Linear Feet	Preformed Joint Seal, Type I

**ADDENDUM**

**DESCRIPTION OF SHEET**

TITLE SHEET, DETAILED INDEX, AND GENERAL NOTES - (5)

TITLE SHEET  
DETAILED INDEX  
DETAILED INDEX  
GENERAL NOTES  
GENERAL NOTES

TYPICAL SECTIONS - (5)

TYPICAL SECTIONS - SR 27 NEW CONSTRUCTION  
TYPICAL SECTIONS - SR 27 WIDENING & OVERLAY  
TYPICAL SECTIONS - SR 27 DETOUR ROAD  
TYPICAL SECTIONS - BRIDGE END SHOULDER DETAIL  
TYPICAL SECTIONS - BRIDGE END PAVEMENT DETAIL

QUANTITY SHEETS - (17)

SUMMARY OF QUANTITIES - COPIAH CO.  
SUMMARY OF QUANTITIES - COPIAH CO.  
SUMMARY OF QUANTITIES - COPIAH CO.  
SUMMARY OF QUANTITIES - HINDS CO.  
SUMMARY OF QUANTITIES - HINDS CO.  
SUMMARY OF QUANTITIES - HINDS CO.  
SUMMARY OF QUANTITIES - TOTAL  
SUMMARY OF QUANTITIES - TOTAL  
SUMMARY OF QUANTITIES - TOTAL  
ESTIMATED QUANTITIES - REMOVAL ITEMS  
ESTIMATED QUANTITIES - EARTHWORK AND GUARDRAIL  
ESTIMATED QUANTITIES - PAVEMENT MARKINGS AND BRIDGE END PAVEMENT  
ESTIMATED QUANTITIES - EROSION CONTROL, FLUMES, PIPES, AND BOX CULVERTS  
ESTIMATED QUANTITIES - STANDARD ROADSIDE SIGNS  
ESTIMATED QUANTITIES - PERMANENT SIGN ASSEMBLIES  
ESTIMATED QUANTITIES - TRAFFIC CONTROL ITEMS  
ESTIMATED QUANTITIES - TRAFFIC CONTROL SIGNS

RIGHT-OF-WAY COORDINATE SHEET (1)

RIGHT-OF-WAY COORDINATE SHEET

PLAN & PROFILE SHEETS - (2)

STA. 389+25 TO STA. 20+75 - SR 27  
STA. 5+24 TO STA. 30+56 - DETOUR

SPECIAL DESIGN SHEETS - (11)

CONSTRUCTION SIGNING  
TRAFFIC CONTROL PLAN - PHASE 1  
TRAFFIC CONTROL PLAN - PHASE 2  
TRAFFIC CONTROL PLAN - PHASE 3  
PAVEMENT MARKINGS - B.O.P TO E.O.P.  
EROSION CONTROL PLAN - SR 27  
EROSION CONTROL PLAN - RIPARIAN BUFFER DETAILS  
EROSION CONTROL PLAN - DETOUR  
VEGETATION SCHEDULE  
BRIDGE END PAVEMENT WITH RAIL, OVERLAY, AND SLEEPER SLAB (NEW CONSTRUCTION)  
BRIDGE END PAVEMENT RAIL (37.5" RAIL HEIGHT)

PERMANENT SIGNING PLANS - (1)

PERMANENT SIGNING PLAN

STANDARD DRAWINGS - ROADWAY DESIGN SHEETS (2017) - (60)

PAVEMENT MARKING DETAILS FOR 2-LANE & 4-LANE DIVIDED ROADWAYS  
RUMBLE STRIPES 2-LANE HIGHWAYS (ASPHALT LANES, 2-FT ASPHALT SHOULDERS)  
TYPICAL TEMPORARY EROSION CONTROL / SEDIMENT CONTROL APPLICATIONS  
DETAILS OF SEDIMENT BARRIER APPLICATIONS

WKG. NO.

DI-1  
DI-2  
GN-1  
GN-2

TS-1  
TS-2  
TS-3  
TS-4  
TS-5

SQ-1  
SQ-2  
SQ-3  
SQ-4  
SQ-5  
SQ-6  
SQ-7  
SQ-8  
SQ-9

EQ-1  
EQ-2  
EQ-3  
EQ-4  
EQ-5  
EQ-6  
EQ-7  
EQ-8

RCS-1

3  
3A

CS-1

TC-1  
TC-2  
TC-3

PM-1

ECP-3  
ECP-RB-3  
ECP-3A

VS-1  
SDBE-1  
SDBER-1

PSP-1

PM-1  
RS-1  
ECD-1  
ECD-2

**DESCRIPTION OF SHEET**

STANDARD DRAWINGS - ROADWAY DESIGN SHEETS (2017) - (CONT.)

DETAILS OF SILT FENCE INSTALLATION  
DITCH CHECK STRUCTURES, TYPICAL APPLICATIONS AND DETAILS  
TEMPORARY EROSION, SEDIMENT, AND WATER POLLUTION CONTROL MEASURES (SILT FENCE AND HAY BALE DITCH CHECKS)

DETAILS OF EROSION CONTROL WATTLE DITCH CHECK  
DETAILS OF EROSION CONTROL SILT DIKE DITCH CHECK  
ROCK DITCH CHECK  
ROCK FILTER DAM

ROCK DITCH CHECK WITH SUMP EXCAVATION AND ROCK FILTER DAM  
TYPICAL APPLICATIONS AND DETAILS FOR INLET CONSTRUCTION  
TYPICAL PROTECTION DETAILS FOR SEDIMENT CONTROL STONE ON GRADES AND SAGS  
INLET PROTECTION DETAILS OF WATTLES  
INLET PROTECTION DETAILS OF MANUFACTURED INLET PROTECTION DEVICE  
INLET PROTECTION DETAILS OF SANDBAGS  
STABILIZED CONSTRUCTION ENTRANCE  
TEMPORARY CULVERT STREAM CROSSING  
TEMPORARY STREAM DIVERSION (BOX EXTENSION)

FLOATING TURBIDITY CURTAIN  
DETAILS OF EROSION CONTROL SANDBAG DITCH CHECK  
SEDIMENT RETENTION BARRIER  
DETAILS OF TYPICAL DITCH TREATMENTS  
DITCH TREATMENT INSTALLATION DETAIL FOR SOIL REINFORCING MAT  
TYPICAL TEMPORARY EROSION CONTROL MEASURES (SLOPE DRAIN AND TYPE A SILT BASIN)  
SUPER SILT FENCE

EROSION CONTROL BLANKET  
GUARDRAIL: "W" BEAM (WOOD POSTS)  
GUARDRAIL: THRIE BEAM (WOOD POSTS)  
GUARDRAIL: "W" BEAM (STEEL POSTS)  
GUARDRAIL: BRIDGE END SECTION-TYPE I (WOOD POSTS)(NEW CONSTRUCTION)  
GUARDRAIL: BRIDGE END SECTION-TYPE I (STEEL POSTS)(NEW CONSTRUCTION)  
GUARDRAIL: TYPICAL INSTALLATION AT BRIDGE APPROACHES FOR 2-LANE, 2-WAY HIGHWAY  
GUARDRAIL: RUB RAIL HARDWARE  
GUARDRAIL (TEMPORARY): TYPICAL INSTALLATION AT DETOUR BRIDGE END

GUARDRAIL: MISCELLANEOUS HARDWARE  
STANDARD ROADSIDE SIGN ASSEMBLY AND INSTALLATION  
STANDARD ROADSIDE SIGN ASSEMBLY AND INSTALLATION  
TYPICAL INSTALLATION AND DETAILS OF DELINEATORS AND DISTANCE REFERENCE SIGNS  
TYPICAL GUARDRAIL DELINEATION  
SIGNING DETAILS FOR BRIDGE APPROACHES  
TRAFFIC CONTROL PLAN WITH FLAGGER (ONE-LANE CLOSURE OF TWO-WAY TRAFFIC)  
SHORT DURATION CLOSING OF TWO-LANE TWO-WAY HIGHWAYS  
HIGHWAY SIGN AND BARRICADE DETAILS FOR CONSTRUCTION PROJECTS  
TRAFFIC CONTROL PLAN MOBILE OPERATIONS MULTILANE ROADS AND TWO-LANE ROADS  
TRAFFIC CONTROL PLAN: UNEVEN PAVEMENT DETAILS  
TEMPORARY STRIPING FOR TRAFFIC CONTROL 2-LANE AND 4-LANE DIVIDED HIGHWAYS  
LOCATION OF R16-3 SIGNS (SPEEDING FINES DOUBLE)  
TRAFFIC CONTROL DETAILS DRUM PLACEMENT AND SHOULDER CLOSURE  
RIGHT-OF-WAY MARKER

TYPICAL GRADING TRANSITION BETWEEN CUTS AND FILLS  
GUIDE BANK (SPUR DIKE): EARTH  
SUPERELEVATION CASE 1 ROTATION ABOUT CENTERLINE  
SUPERELEVATION RUNOFF CASE 1 ROTATION ABOUT CENTERLINE  
MISCELLANEOUS DETAIL SHEET, 1. STACKED PIPE JOINTS, 2. EXCAVATION AT GRADE POINTS  
DETAILS OF PAVED FLUMES  
PIPE CULVERT INSTALLATION  
FLEXIBLE PIPE CULVERT INSTALLATION

VEGETATION SCHEDULE

BRIDGE END PAVEMENT WITH RAIL, OVERLAY, AND SLEEPER SLAB (NEW CONSTRUCTION)

BRIDGE END PAVEMENT RAIL (37.5" RAIL HEIGHT)

PERMANENT SIGNING PLANS - (1)

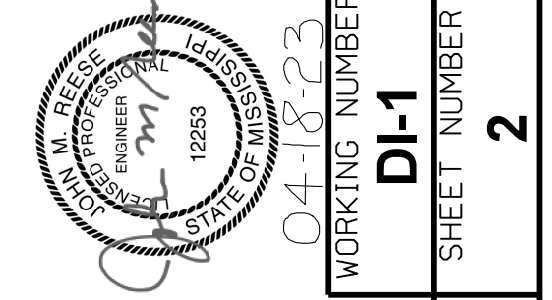
PERMANENT SIGNING PLAN

STANDARD DRAWINGS - ROADWAY DESIGN SHEETS (2017) - (60)

PAVEMENT MARKING DETAILS FOR 2-LANE & 4-LANE DIVIDED ROADWAYS  
RUMBLE STRIPES 2-LANE HIGHWAYS (ASPHALT LANES, 2-FT ASPHALT SHOULDERS)  
TYPICAL TEMPORARY EROSION CONTROL / SEDIMENT CONTROL APPLICATIONS  
DETAILS OF SEDIMENT BARRIER APPLICATIONS

Table with 3 columns: DATE, SHEET NO., BY. Row 1: 4/17/23, 14, 15, 17, 18, RCG.

MISSISSIPPI DEPARTMENT OF TRANSPORTATION DETAILED INDEX. Includes project number BR-0054-02(025), county COPIAH & HINDS, and sheet number 2.



PROJ. NO.: BR-0054-02(025)  
COUNTY: COPIAH & HINDS  
FILE NAME: D:\DGN  
DESIGN TEAM: FA  
CHECKED: \_\_\_\_\_  
DATE: \_\_\_\_\_

WORKING NUMBER: DI-1  
SHEET NUMBER: 2



**ADDENDUM**

STATE	PROJECT NO.
MISS	BR-0054-02(025)/BR-0054-02(025)

**SUMMARY OF QUANTITIES (SHEET 4)**

PAY ITEM NO.	PAY ITEM	UNIT	HINDS : 106113-303000	
			Prelim	Final
201-B001	Clearing and Grubbing	ACRE	6	
202-A001	Removal of Obstructions	LS	1	
202-B007	Removal of Asphalt Pavement, All Depths	SY	5,490	
202-B018	Removal of Box Culvert	EA	2	
202-B158	Removal of Guard Rail, Including Rails, Posts and Terminal Ends	LF	516	
202-B191	Removal of Pipe, 8" And Above	LF	0	
202-B240	Removal of Traffic Stripe	LF	1,000	
203-A001	Unclassified Excavation, FM, AH	CY	4,171	
203-EX021	Borrow Excavation, AH, FME, Class B9-6	CY	20,073	
203-F001	Channel Excavation, FM	CY	3,556	
203-G001	Excess Excavation, FM, AH	CY	12,397	
206-A001	Structure Excavation	CY	835	
206-B001	Select Material for Undercuts, Contractor Furnished, FM	CY	82	
209-A005	Geotextile Stabilization, Type V, Non-Woven	SY	3,100	
213-C001	Superphosphate	TON	4	
216-A001	Solid Sodding	SY	98	
217-A001	Ditch Liner	SY	227	
219-A001	Watering	KGAL	2	
220-A001	Insect Pest Control	ACRE	4	
221-A001	Concrete Paved Ditch	CY	11	
223-A001	Mowing	ACRE	16	
224-A001	Soil Reinforcing Mat	SY	62	
225-A001	Grassing	ACRE	8	
225-B001	Agricultural Limestone	TON	23	
225-C001	Mulch, Vegetative Mulch	TON	16	
226-A001	Temporary Grassing	ACRE	8	
229-A001	Erosion Mat	SY	264	
907-234-C001	Super Silt Fence	LF	1,950	
907-234-F001	Turbidity Barrier	LF	472	
237-A002	Wattles, 20"	LF	220	
246-B002	Rockbags	LF	440	
247-A001	Temporary Stream Diversion	EA	2	
249-A001	Riprap for Erosion Control	TON	220	
304-A005	Granular Material, LVM, Class 5, Group D	CY	2,060	
304-H001	3/4" and Down Crushed Stone Base, LVM	CY	840	
	OR			
304-H002	Size 610 Crushed Stone Base, LVM	CY	840	
	OR			
304-H003	Size 825B Crushed Stone Base, LVM	CY	840	
403-A001	12.5-mm, HT, Asphalt Pavement	TON	632	
403-A004	19-mm, HT, Asphalt Pavement	TON	1,530	
403-A013	9.5-mm, HT, Asphalt Pavement	TON	416	

- ① Includes, but not limited to, aprons, parapets, fence, footings, and/or other underground obstructions.
- ② Br. No. 93.1, Spans 1 @ 30', 1 @ 60', 1 @ 30'
- ③ 34' of 12'X8' at Sta. 1+76 and 35' of 12'X5' at Sta. 14+62.
- ④ Includes removal of bridge end section, terminal end section, rail, posts, blockouts, hardware, etc. (as measured from beginning of bridge end section to end of terminal end section), and object markers.
- ⑤ To be used for unsuitable material found at box culverts.
- ⑥ Includes 76 SY adjacent to paved flumes and 22 SY around underdrain outlet aprons at bridge ends.
- ⑦ Includes 9 CY for paved flumes and 2 CY for underdrain outlet aprons at bridge ends.
- ⑧ 211 CY for pipes and 624 CY for box culverts.
- ⑨ Includes 50% increase from calculated quantity.



RCG	Revised Pay Item	Date
By	Revision	Date

**MISSISSIPPI DEPARTMENT OF TRANSPORTATION**  
**SUMMARY OF QUANTITIES**

PROJ NO: BR-0054-02(025)  
 COUNTY: HINDS

FILENAME: SQS

Working Number: SQ-4  
 04-18-23

Design Team EA Checked Date  
 Sheet Number 14





STATE	PROJECT NO.
MISS	BR-0054-02(025)/BR-0054-02(025)

**ADDENDUM**

**SUMMARY OF QUANTITIES (SHEET 5)**

PAY ITEM NO.	PAY ITEM	UNIT	HINDS : 106113-303000	
			Prelim	Final
403-D001	12.5-mm, HT, Asphalt Pavement, Polymer Modified	TON	494	
403-D007	9.5-mm, HT, Asphalt Pavement, Polymer Modified	TON	532	
406-D001	Fine Milling of Bituminous Pavement, All Depths	SY	500	
407-A001	Asphalt for Tack Coat	GAL	1,631	
408-A002	Asphalt for Prime Coat, Cut-Back MC-70 or Emulsified EA-1	GAL	1,897	
413-E001	Sawing and Sealing Transverse Joints in Asphalt Pavement	LF	86	
423-A001	Rumble Strips, Ground In	MI	1	
501-K001	Transverse Grooving	SY	27	
502-A001	Reinforced Cement Concrete Bridge End Pavement	SY	184	
601-A001	Class "B" Structural Concrete	CY	310	
602-A001	Reinforcing Steel	LBS	58,934	
603-ALT016	48" Type A Alternate Pipe	LF	112	
603-CA131	84" Reinforced Concrete Pipe, Class III	LF	104	
605-AA001	Geotextile for Subsurface Drainage, Type III	SY	70	
605-T001	4" Perforated Pipe for Underdrains	LF	88	
605-U001	4" Non-perforated Pipe for Underdrains	LF	36	
605-W001	Filter Material for Combination Storm Drain and/or Underdrains, Type A, FM	CY	5	
605-W002	Filter Material for Combination Storm Drain and/or Underdrains, Type B, FM	CY	66	
605-W003	Filter Material for Combination Storm Drain and/or Underdrains, Type C, FM	CY	66	
606-B001	Guard Rail, Class A, Type 1	LF	250	
606-D022	Guard Rail, Bridge End Section, Type I	EA	4	
606-E005	Guard Rail, Terminal End Section, Flared	EA	4	
615-A024	Concrete Bridge End Barrier, 37.5"	LF	40	
617-A001	Right-of-Way Marker	EA	26	
618-A001	Maintenance of Traffic	LS	1	
618-C001	Construction and Removal of Detour Bridge (Sta. 16+28-Sta. 17+27)	LS	1	
618-E001	Detour Bridge Piling	LF	1,700	
618-F001	Detour Bridge PDA Test Pile	LS	1	
619-A1002	Temporary Traffic Stripe, Continuous White	LF	7,690	
619-A2002	Temporary Traffic Stripe, Continuous Yellow	LF	7,600	
619-A2008	Temporary Traffic Stripe, Continuous Yellow, Type 1 or 2 Tape	LF	975	
619-A4001	Temporary Traffic Stripe, Skip Yellow	LF	3,500	
619-A5003	Temporary Traffic Stripe, Detail, Type 1 Tape	LF	1,175	
619-C7001	Two-Way Yellow Reflective High Performance Raised Marker	EA	36	
619-D1001	Standard Roadside Construction Signs, Less than 10 Square Feet	SF	79	
619-D2001	Standard Roadside Construction Signs, 10 Square Feet or More	SF	190	
619-F3001	Delineators, Guard Rail, White	EA	16	
619-G4001	Barricades, Type III, Double Faced	LF	12	
619-G4005	Barricades, Type III, Single Faced	LF	24	
619-G5001	Free Standing Plastic Drums	EA	39	

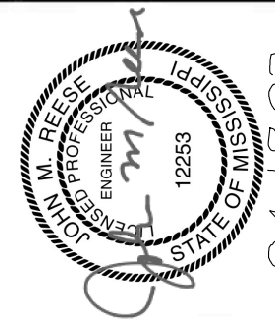


① ②  
②

- ① See Working Number EQ-4 for pipe alternates.
- ② Temporary pipe.



**MISSISSIPPI DEPARTMENT OF TRANSPORTATION**  
**SUMMARY OF QUANTITIES**



04-18-23  
 Working Number  
**SQ-5**

PROJ NO: BR-0054-02(025)  
 COUNTY: HINDS

4-17-23  
 Removed Pay Item  
 Date  
 Revision  
 RCG

Design Team EA  
 Checked  
 Date  
 Sheet Number  
**15**

FILENAME: SQS



**ADDENDUM**

STATE	PROJECT NO.
MISS	BR-0054-02(025)/BR-0054-02(025)

**SUMMARY OF QUANTITIES (SHEET 7)**

PAY ITEM NO.	PAY ITEM	UNIT	Total Amount		
			Prelim	Final	
201-B001	Clearing and Grubbing	ACRE	7		①
202-A001	Removal of Obstructions	LS	1		③
202-B007	Removal of Asphalt Pavement, All Depths	SY	6,348		
202-B018	Removal of Box Culvert	EA	2		④
202-B158	Removal of Guard Rail, Including Rails, Posts and Terminal Ends	LF	516		⑤
202-B191	Removal of Pipe, 8" And Above	LF	21		②
202-B240	Removal of Traffic Stripe	LF	2,000		
203-A001	Unclassified Excavation, FM, AH	CY	4,353		
203-EX021	Borrow Excavation, AH, FME, Class B9-6	CY	21,546		
203-F001	Channel Excavation, FM	CY	3,556		
203-G001	Excess Excavation, FM, AH	CY	13,312		
206-A001	Structure Excavation	CY	835		⑨
206-B001	Select Material for Undercuts, Contractor Furnished, FM	CY	82		⑥
209-A005	Geotextile Stabilization, Type V, Non-Woven	SY	3,100		
213-C001	Superphosphate	TON	5		
216-A001	Solid Sodding	SY	98		⑦
217-A001	Ditch Liner	SY	359		
219-A001	Watering	KGAL	2		
220-A001	Insect Pest Control	ACRE	5		
221-A001	Concrete Paved Ditch	CY	11		⑧
223-A001	Mowing	ACRE	18		
224-A001	Soil Reinforcing Mat	SY	196		
225-A001	Grassing	ACRE	9		
225-B001	Agricultural Limestone	TON	27		
225-C001	Mulch, Vegetative Mulch	TON	19		
226-A001	Temporary Grassing	ACRE	9		
229-A001	Erosion Mat	SY	264		
907-234-C001	Super Silt Fence	LF	2,600		
907-234-F001	Turbidity Barrier	LF	472		
237-A002	Wattles, 20"	LF	260		
246-B002	Rockbags	LF	520		
247-A001	Temporary Stream Diversion	EA	2		
249-A001	Riprap for Erosion Control	TON	260		
304-A005	Granular Material, LVM, Class 5, Group D	CY	2,300		⑩
304-H001	3/4" and Down Crushed Stone Base, LVM	CY	840		⑩
	OR				
304-H002	Size 610 Crushed Stone Base, LVM	CY	840		⑩
	OR				
304-H003	Size 825B Crushed Stone Base, LVM	CY	840		⑩
403-A001	12.5-mm, HT, Asphalt Pavement	TON	750		
403-A004	19-mm, HT, Asphalt Pavement	TON	1,695		
403-A013	9.5-mm, HT, Asphalt Pavement	TON	532		

- ① Includes, but not limited to, aprons, parapets, fence, footings, and/or other underground obstructions.
- ② Does not include abandoned utility lines.
- ③ Br. No. 93.1, Spans 1 @ 30', 1 @ 60', 1 @ 30'
- ④ 34' of 12'X8' at Sta. 1+76 and 35' of 12'X5' at Sta. 14+62.
- ⑤ Includes removal of bridge end section, terminal end section, rail, posts, blockouts, hardware, etc. (as measured from beginning of bridge end section to end of terminal end section), and object markers.
- ⑥ To be used for unsuitable material found at box culverts.
- ⑦ Includes 76 SY adjacent to paved flumes and 22 SY around underdrain outlet aprons at bridge ends.
- ⑧ Includes 9 CY for paved flumes and 2 CY for underdrain outlet aprons at bridge ends.
- ⑨ 211 CY for pipes and 624 CY for box culverts.
- ⑩ Includes 50% increase from calculated quantity.



Revised Pay Item	RCG	Date	4-17-23
Revision	By	Working Number	SQ-7
MISSISSIPPI DEPARTMENT OF TRANSPORTATION SUMMARY OF QUANTITIES - PROJECT TOTALS			
PROJ NO: BR-0054-02(025)/BR-0054-02(025) FMS: 106113-302000/106113-303000 FILENAME: SQS Design Team EA			
		Checked	Date
		Sheet Number	17



**ADDENDUM**

STATE	PROJECT NO.
MISS	BR-0054-02(025)/BR-0054-02(025)

**SUMMARY OF QUANTITIES (SHEET 8)**

PAY ITEM NO.	PAY ITEM	UNIT	Total Amount	
			Prelim	Final
403-D001	12.5-mm, HT, Asphalt Pavement, Polymer Modified	TON	494	
403-D007	9.5-mm, HT, Asphalt Pavement, Polymer Modified	TON	669	
406-D001	Fine Milling of Bituminous Pavement, All Depths	SY	1,000	
407-A001	Asphalt for Tack Coat	GAL	1,885	
408-A002	Asphalt for Prime Coat, Cut-Back MC-70 or Emulsified EA-1	GAL	2,197	
413-E001	Sawing and Sealing Transverse Joints in Asphalt Pavement	LF	86	
423-A001	Rumble Strips, Ground In	MI	2	
501-K001	Transverse Grooving	SY	27	
502-A001	Reinforced Cement Concrete Bridge End Pavement	SY	184	
601-A001	Class "B" Structural Concrete	CY	310	
602-A001	Reinforcing Steel	LBS	58,934	
603-ALT016	48" Type A Alternate Pipe	LF	112	
603-CA131	84" Reinforced Concrete Pipe, Class III	LF	104	
605-AA001	Geotextile for Subsurface Drainage, Type III	SY	70	
605-T001	4" Perforated Pipe for Underdrains	LF	88	
605-U001	4" Non-perforated Pipe for Underdrains	LF	36	
605-W001	Filter Material for Combination Storm Drain and/or Underdrains, Type A, FM	CY	5	
605-W002	Filter Material for Combination Storm Drain and/or Underdrains, Type B, FM	CY	66	
605-W003	Filter Material for Combination Storm Drain and/or Underdrains, Type C, FM	CY	66	
606-B001	Guard Rail, Class A, Type 1	LF	250	
606-D022	Guard Rail, Bridge End Section, Type I	EA	4	
606-E005	Guard Rail, Terminal End Section, Flared	EA	4	
615-A024	Concrete Bridge End Barrier, 37.5"	LF	40	
617-A001	Right-of-Way Marker	EA	34	
618-A001	Maintenance of Traffic	LS	1	
618-C001	Construction and Removal of Detour Bridge (Sta. 16+28-Sta. 17+27)	LS	1	
618-E001	Detour Bridge Piling	LF	1,700	
618-F001	Detour Bridge PDA Test Pile	LS	1	
619-A1002	Temporary Traffic Stripe, Continuous White	LF	10,200	
619-A2002	Temporary Traffic Stripe, Continuous Yellow	LF	10,110	
619-A2008	Temporary Traffic Stripe, Continuous Yellow, Type 1 or 2 Tape	LF	1,950	
619-A4001	Temporary Traffic Stripe, Skip Yellow	LF	3,500	
619-A5003	Temporary Traffic Stripe, Detail, Type 1 Tape	LF	2,625	
619-C7001	Two-Way Yellow Reflective High Performance Raised Marker	EA	48	
619-D1001	Standard Roadside Construction Signs, Less than 10 Square Feet	SF	114	
619-D2001	Standard Roadside Construction Signs, 10 Square Feet or More	SF	348	
619-F3001	Delineators, Guard Rail, White	EA	16	
619-G4001	Barricades, Type III, Double Faced	LF	24	
619-G4005	Barricades, Type III, Single Faced	LF	48	
619-G5001	Free Standing Plastic Drums	EA	53	

- ① See Working Number EQ-4 for pipe alternates.
- ② Temporary pipe.



**MISSISSIPPI DEPARTMENT OF TRANSPORTATION**  
**SUMMARY OF QUANTITIES - PROJECT TOTALS**

RCG	Removed Pay Item	4-17-23
by	Revision	

PROJ NO: BR-0054-02(025)/BR-0054-02(025)  
 Working Number  
**SQ-8**

FMS: 106113-302000/106113-303000

FILENAME: SQS  
 Design Team EA Checked Date

Sheet Number  
**18**

04-18-23