

SECTION 905 -- PROPOSAL (CONTINUED)

I (We) hereby certify by digital signature and electronic submission via Bid Express of the Section 905 proposal below, that all certifications, disclosures and affidavits incorporated herein are deemed to be duly executed in the aggregate, fully enforceable and binding upon delivery of the bid proposal. I (We) further acknowledge that this certification shall not extend to the bid bond or alternate security which must be separately executed for the benefit of the Commission. This signature does not cure deficiencies in any required certifications, disclosures and/or affidavits. I (We) also acknowledge the right of the Commission to require full and final execution on any certification, disclosure or affidavit contained in the proposal at the Commission's election upon award. Failure to so execute at the Commission's request within the time allowed in the Standard Specifications for execution of all contract documents will result in forfeiture of the bid bond or alternate security.

Bidder acknowledges receipt of and has added to and made a part of the proposal and contract documents the following addendum (addenda):

ADDENDUM NO. <u>1</u>	DATED <u>8/17/2023</u>	ADDENDUM NO. _____	DATED _____
ADDENDUM NO. <u>2</u>	DATED <u>8/18/2023</u>	ADDENDUM NO. _____	DATED _____
ADDENDUM NO. _____	DATED _____	ADDENDUM NO. _____	DATED _____

Number	Description
1	Revised or Added Plan Sheet Nos. 2, 4.1, 7-9, 10-13; Revised Bid Items; Amendment EBSx Download Required.
2	Revised or Added Plan Sheet Nos. 2, 4.1, 10-12, 18, 4001-4004; Revised Bid Items; Amendment EBSx Download Required.

TOTAL ADDENDA: 2
(Must agree with total addenda issued prior to opening of bids)

Respectfully Submitted,

DATE _____

Contractor

BY _____
Signature

TITLE _____

ADDRESS _____

CITY, STATE, ZIP _____

PHONE _____

FAX _____

E-MAIL _____

(To be filled in if a corporation)

Our corporation is chartered under the Laws of the State of _____ and the names, titles and business addresses of the executives are as follows:

_____ President	_____ Address
_____ Secretary	_____ Address
_____ Treasurer	_____ Address

The following is my (our) itemized proposal.
STBG-0086-00(009)/ 108824301000
Harrison County(ies)

Revised 01/26/2016



DESIGNED BY: _____
 CHECKED BY: _____
 DATE: _____

FMS CON: 108824/301000
 PROJECT NO.: STRG-0086-00(009)
 COUNTY: HARRISON

DETAILED INDEX

WK. NO. **DL-1**
 SHEET NO. **Z**

ADDENDUM

WORKING SHEET NO.

DESCRIPTION OF SHEET

INTERSECTION DETAIL SHEETS (2)		
INTERSECTION DETAIL - SOUTH ROUNDABOUT	ID-1	29
INTERSECTION DETAIL - NORTH ROUNDABOUT	ID-2	30
FORM GRADES (2)		
FORM GRADE DETAILS - SOUTH ROUNDABOUT	FG-1	31
FORM GRADE DETAILS - NORTH ROUNDABOUT	FG-2	32
TRAFFIC CONTROL SHEETS (14)		
DETAIL OF CONSTRUCTION SIGNING	DCS-1	33
DETAIL OF CONSTRUCTION SIGNING	DCS-2	34
DETAIL OF CONSTRUCTION SIGNING	DCS-3	35
DETAIL OF CONSTRUCTION SIGNING	DCS-4	36
TRAFFIC CONTROL - PHASE 1	TCP-1-1	37
TRAFFIC CONTROL - PHASE 1	TCP-1-2	38
TRAFFIC CONTROL - PHASE 2	TCP-2-1	39
TRAFFIC CONTROL - PHASE 2	TCP-2-2	40
TRAFFIC CONTROL - PHASE 3A	TCP-3A-1	41
TRAFFIC CONTROL - PHASE 3A	TCP-3A-1	42
TRAFFIC CONTROL - PHASE 3B	TCP-3B-1	43
TRAFFIC CONTROL - PHASE 3B	TCP-3B-2	44
TRAFFIC CONTROL - PHASE 4	TCP-4-1	45
TRAFFIC CONTROL - PHASE 4	TCP-4-2	46
MISCELLANEOUS DETAIL SHEETS (10)		
VEGETATION SCHEDULE	VS-1	47
EROSION CONTROL PLAN	ECP-3	48
EROSION CONTROL PLAN	ECP-4	49
EROSION CONTROL PLAN	ECP-5	50
EROSION CONTROL PLAN	ECP-6	51
EROSION CONTROL PLAN	ECP-7	52
EROSION CONTROL PLAN	ECP-8	53
EROSION CONTROL PLAN	ECP-9	54
EROSION CONTROL PLAN	ECP-10	55
PAVEMENT MARKING DETAILS	PMD-1	56

WORKING SHEET NO.

DESCRIPTION OF SHEET

TITLE SHEET		1
DETAILED INDEX AND GENERAL NOTES (6)		
DETAILED INDEX	DI-1	2
DETAILED INDEX	DI-2	3
DETAILED INDEX	DI-3	4
REVISIONS		4.1
GENERAL NOTES	GN-1	5
GENERAL NOTES	GN-2	6
TYPICAL SECTIONS (3)		
TYPICAL SECTIONS - SHRINER BLVD.	TS-1	7
TYPICAL SECTIONS - SHRINER BLVD.	TS-2	8
TYPICAL SECTIONS - RAMPS	TS-3	9
QUANTITY SHEETS (9)		
SUMMARY OF QUANTITIES	SQ-1	10
SUMMARY OF QUANTITIES	SQ-2	11
SUMMARY OF QUANTITIES	SQ-3	12
ESTIMATED QUANTITIES	EQ-1	13
ESTIMATED QUANTITIES	EQ-2	14
ESTIMATED QUANTITIES	EQ-3	15
ESTIMATED QUANTITIES	EQ-4	16
ESTIMATED QUANTITIES	EQ-5	17
ESTIMATED QUANTITIES	EQ-6	18
PLAN & PROFILE SHEETS (10)		
NORTHBOUND SHRINER BLVD	WK-3	19
NORTHBOUND SHRINER BLVD	WK-4	20
SOUTHBOUND SHRINER BLVD	WK-5	21
SOUTHBOUND SHRINER BLVD	WK-6	22
SOUTHWEST RAMP	WK-7	23
SOUTHEAST RAMP	WK-8	24
NORTHWEST RAMP	WK-9	25
NORTHEAST RAMP	WK-10	26
SOUTH ROUNDABOUT	WK-11	27
NORTH ROUNDABOUT	WK-12	28

PS & E PLANS DATE: 6/17/23	
FMS CON. # 108824/301000	
REVISIONS	
BY	DATE
8/17/23	2, 4, 7, 8, 9, 10
8/17/23	1, 11, 12, 13
8/17/23	2, 4, 11, 10, 11, 16
8/17/23	4001, 4002, 4003, 4004

ADDENDUM



DESIGNED BY: _____
 CHECKED BY: _____
 DATE: _____
 PROJECT NO.: STBG-0086-00(009)
 COUNTY: HARRISON
 FMS CON: 108824/301000

REVISIONS

WK. NO. _____
 SHEET NO. **4.1**

SUMMARY OF REVISIONS

DATE	1st ORDER	ADDENDUM	2nd ORDER	BY	WK. NO.	DESCRIPTION
8-3-23		X		VOLKERT	DI-1	ADDED REVISIONS SHEET
8-3-23		X		VOLKERT	TS-1	UPDATED TYPICAL. ADDED DETAIL LABEL.
8-3-23		X		VOLKERT	TS-2	UPDATED TYPICAL.
8-3-23		X		VOLKERT	TS-3	UPDATED TYPICAL.
8-3-23		X		VOLKERT	SQ-1	UPDATED QUANTITIES.
8-3-23		X		VOLKERT	EQ-1	UPDATED QUANTITY RECAP.
8-15-23		X		VOLKERT	SQ-1	REVISED QUANTITIES AND FOOTNOTES
8-15-23		X		VOLKERT	EQ-1	REVISED QUANTITIES
8-17-23		X		VOLKERT	SQ-1	REVISED QUANTITIES
8-17-23		X		VOLKERT	SQ-2	REVISED QUANTITIES
8-17-23		X		VOLKERT	EQ-6	REVISED QUANTITIES
8-17-23		X		VOLKERT	LN-1	REVISED NOTES
8-17-23		X		VOLKERT	LA-1	REVISED CALLOUTS.
8-17-23		X		VOLKERT	LA-2	REVISED CALLOUTS.
8-17-23		X		VOLKERT	LD-1	REVISED DETAILS AND NOTES

ADDENDUM

SUMMARY OF QUANTITIES (SHEET 1)

PAY ITEM NO.	PAY ITEM	UNIT	HARRISON : 108824-301000	
			Prelim	Final
201-A001	Clearing and Grubbing	LS	1	
202-B007	Removal of Asphalt Pavement, All Depths	SY	2,130	
202-B088	Removal of Curb & Gutter, All Types	LF	1,015	
202-B092	Removal of Curb, All Types	LF	491	
202-B191	Removal of Pipe, 8" And Above	LF	21	
202-B215	Removal of Sign Including Post & Footing	EA	10	
203-A001	Unclassified Excavation, FM, AH	CY	695	
203-EX017	Borrow Excavation, AH, FME, Class B7	CY	3,625	
203-G001	Excess Excavation, FM, AH	CY	50	
206-A001	Structure Excavation	CY	19	
209-A005	Geotextile Stabilization, Type V, Non-Woven	SY	3,693	
211-B001	Topsail for Slope Treatment, Contractor Furnished	CY	167	
213-C001	Superphosphate	TON	1	
216-A001	Solid Sodding	SY	13,140	
219-A001	Watering	KGAL	263	
220-A001	Insect Pest Control	ACRE	2	
223-A001	Mowing	ACRE	2	
226-A001	Temporary Grassing	ACRE	2	
907-234-A001	Temporary Silt Fence	LF	600	
237-A002	Wattles, 20"	LF	725	
245-A001	Silt Dike	LF	250	
246-B002	Rockbags	LF	280	
304-F001	3/4" and Down Crushed Stone Base	TON	1,552	
	OR			
304-F002	Size 610 Crushed Stone Base	TON	1,552	
	OR			
304-F003	Size 825B Crushed Stone Base	TON	1,552	
403-A002	12.5-mm, MT, Asphalt Pavement	TON	684	
403-A005	19-mm, MT, Asphalt Pavement	TON	409	
403-A006	19-mm, ST, Asphalt Pavement	TON	511	
403-A014	9.5-mm, MT, Asphalt Pavement	TON	513	
406-D001	Fine Milling of Bituminous Pavement, All Depths	SY	2,481	
407-A001	Asphalt for Tack Coat	GAL	807	
503-C010	Saw Cut, Full Depth	LF	3,307	
601-B001	Class "B" Structural Concrete, Minor Structures	CY	43	
602-A001	Reinforcing Steel	LBS	4,045	
603-CA011	18" Reinforced Concrete Pipe, Class III	LF	608	
603-CA040	30" Reinforced Concrete Pipe, Class III	LF	8	
603-CB003	18" Reinforced Concrete End Section	EA	6	
603-CB005	30" Reinforced Concrete End Section	EA	1	

ADDENDUM

- 1 QUANTITY FOR REMOVAL OF QUICK CURB AND DELINEATORS IN ASPHALT PAVEMENT
- 2 ESTIMATED QUANTITY, TO BE USED AS DIRECTED BY THE ENGINEER
- 3 QUANTITY BASED ON ALL DISTURBED CONSTRUCTION AREAS TO RECEIVE SOLID SODDING AS PERMANENT GRASSING
- 4 QUANTITY INCLUDES 198 TONS FOR TEMPORARY WIDENING
- 5 QUANTITY INCLUDES 149 TONS FOR TEMPORARY WIDENING
- 6 QUANTITY INCLUDES 1810 LF TO REMOVE EXISTING PAVEMENT AT CLEAN LINES AND 1497 LF TO REMOVE THE TEMP. WIDENING AT CLEAN LINES
- 7 QUANTITY INCLUDES 35.13 CY FOR INLETS AND TOE WALLS, AND 7.61 CY FOR JUNCTION BOXES
- 8 QUANTITY INCLUDES 3444 LBS FOR INLETS AND 601 LBS FOR JUNCTION BOXES
- 9 QUANTITY INCLUDES 20% SHRINKAGE
- 10 178 CY OF EARTHWORK. 3447 CY SHOULDER MATERIAL INCLUDING A 20% SHRINKAGE.



DESIGNED BY:
CHECKED BY:
DATE:

FMS CON: 108824/301000
PROJECT NO.: STBG-0086-00(009)
COUNTY: HARRISON

SUMMARY OF QUANTITIES

WK. NO. **50-1**
SHEET NO. **10**

ADDENDUM

SUMMARY OF QUANTITIES (SHEET 2)

PAY ITEM NO.	PAY ITEM	UNIT	HARRISON : 108824-301000	
			Prelim	Final
603-CE018	44" x 27" Concrete Arch Pipe, Class A III	LF	40	
603-CE028	58" x 36" Concrete Arch Pipe, Class A III	LF	8	
603-CF005	44" x 27" Concrete Arch Pipe End Section	EA	2	
603-CF007	58" x 36" Concrete Arch Pipe End Section	EA	1	
604-A001	Castings	LBS	1,766	
604-B001	Gratings	LBS	800	
609-B003	Concrete Curb, Special Design	LF	1,270	
609-C001	Concrete Integral Curb, Type 1	LF	471	
609-D012	Combination Concrete Curb and Gutter Type 3A Modified	LF	4,708	
616-A001	Concrete Median and/or Island Pavement, 10-inch	SY	19	
616-A003	Concrete Median and/or Island Pavement, 12-inch	SY	1,150	
907-616-C003	Colored and Imprinted Concrete Median and Island Pavement, 4-inch Thickness	SF	2,249	
618-A001	Maintenance of Traffic	LS	1	
619-A1003	Temporary Traffic Stripe, Continuous White, Paint	LF	8,614	
619-A2003	Temporary Traffic Stripe, Continuous Yellow, Paint	LF	4,159	
619-A5002	Temporary Traffic Stripe, Detail, Paint	LF	2,164	
619-A6003	Temporary Traffic Stripe, Legend, Paint	SF	557	
619-D1001	Standard Roadside Construction Signs, Less than 10 Square Feet	SF	48	
619-D2001	Standard Roadside Construction Signs, 10 Square Feet or More	SF	160	
907-619-E3001	Changeable Message Sign	EA	2	
619-G4001	Barricades, Type III, Double Faced	LF	32	
619-G4005	Barricades, Type III, Single Faced	LF	32	
619-G5001	Free Standing Plastic Drums	EA	123	
620-A001	Mobilization	LS	1	
626-C001	6" Thermoplastic Double Drop Edge Stripe, Continuous White	LF	3,616	
626-E002	6" Thermoplastic Double Drop Traffic Stripe, Continuous Yellow	LF	757	
626-F002	6" Thermoplastic Double Drop Edge Stripe, Continuous Yellow	LF	2,281	
626-G004	Thermoplastic Double Drop Detail Stripe, White	LF	371	
626-G005	Thermoplastic Double Drop Detail Stripe, Yellow	LF	918	
626-H001	Thermoplastic Double Drop Legend, White	SF	488	
627-L001	Two-Way Yellow Reflective High Performance Raised Markers	EA	4	
630-A001	Standard Roadside Signs, Sheet Aluminum, 0.080" Thickness	SF	94	
630-A003	Standard Roadside Signs, Sheet Aluminum, 0.125" Thickness	SF	72	
630-A005	Standard Roadside Signs, Sheet Aluminum, 0.1" Thickness	SF	128	
630-C001	Square Tube Posts, 4.0 lb/ft	LF	196	
630-C005	Square Tube Posts, 2.0 lb/ft	LF	128	
682-A018	Underground Branch Circuit, AWG 2, 3 Conductor	LF	50	
682-A039	Underground Branch Circuit, AWG 8, 3 Conductor	LF	3,406	
682-B037	Underground Branch Circuit, Jacked or Bored, AWG 8, 3 Conductor	LF	276	
682-C009	Structure Mounted Branch Circuit, AWG 10, 3 Conductor	LF	498	
682-D004	Underground Pull Box With Concrete Pad	EA	31	

ADDENDUM
 ① STAMPED PATTERN SHALL BE APPROVED BY THE CITY. PRIOR TO INSTALLATION, A 4'X4' TEST SECTION SHALL BE SHOWN TO THE CITY FOR APPROVAL, COST TO BE ABSORBED.



DESIGNED BY: _____
 CHECKED BY: _____
 DATE: _____

FMS CON: 108824/301000
 PROJECT NO.: STRG-0086-00(009)
 COUNTY: HARRISON

SUMMARY OF QUANTITIES

WK. NO. **SO-2**
 SHEET NO. **11**



ADDENDUM

ADDENDUM



DESIGNED BY:	
DETAILED BY:	
CHECKED BY:	
DATE:	
FMS CON: 108824/301000	
PROJECT NO.: STBG-0086-00(009)	
COUNTY: HARRISON	

SUMMARY OF QUANTITIES

WK. NO. **SO-3**
SHEET NO. **12**

PAY ITEM NO.	PAY ITEM	UNIT	HARRISON : 108824-301000	
			Prelim	Final
682-F001	Secondary Power Controller	EA	1	
683-B200	Lighting Assembly, Low Mast, LED, Type 30-1-10-17	EA	22	
683-C001	Lighting Assembly, Underpass, Type A	EA	4	
684-A005	Pole Foundation, 36" Diameter	CY	87	
684-B005	Slip Casing, 36" Diameter	LF	330	
699-A001	Roadway Construction Stakes	LS	1	

SUMMARY OF QUANTITIES (SHEET 3)



DESIGNED BY: _____
 DETAILED BY: _____
 CHECKED BY: _____
 DATE: _____

FMS CON: 108824/301000
 PROJECT NO.: STBG-0086-00(009)
 COUNTY: HARRISON

GENERAL NOTES AND LEGEND

WK. NO. LN-1
 SHEET NO. 4001

ADDENDUM

- AT
- AMERICAN WIRE GAUGE
- BRANCHING OF PROJECT
- BRANCH
- CENTERLINE
- CIRCUIT
- END OF PROJECT
- EXPOSED
- HIGH PRESSURE SODIUM
- ILLUMINATING ENGINEERING SOCIETY
- LAMP ASSEMBLY NUMBER
- LUMP SUM
- LEFT
- METER
- MISSISSIPPI DEPARTMENT OF TRANSPORTATION
- NORTHWEST
- NOMINAL PIPE SIZE
- NORTHWEST
- ON CENTER
- RIGHT NYL CHLORIDE
- RIGHT
- SOUTHEAST
- SECONDARY POWER CONTROL
- THERMOPLASTIC HEAT AND MOISTURE RESISTANT
- UNDERGROUND
- LIGHT EMITTING DIODE

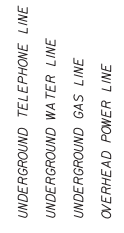
- A.M.G.
- BROCH
- C.K.T.
- E.O.P.
- H.P.S.
- I.E.S.
- L.S.
- L.T.
- M
- ME
- M.F.
- W.F.S.
- W.P.
- D.C.
- R.T.
- S.E.
- S.P.C.
- T.W.
- UNDO.
- LED

- 1 ALL LIGHTING ASSEMBLY LOCATIONS WILL BE STAKED IN THE FIELD BY THE CONTRACTOR. THESE LOCATIONS SHALL BE APPROVED BY THE ENGINEER PRIOR TO CONSTRUCTION OF THE ASSEMBLIES. COST OF STAKING SHALL BE ABSORBED IN OTHER ITEMS.
- 2 ALL QUANTITIES SHOWN FOR BRANCH CIRCUITS ARE APPROXIMATE AND MAY NOT REFLECT LENGTHS REQUIRED BY THE TERRAIN IN THE FIELD.
- 3 THE COST OF DISPOSING OF MATERIALS DEEMED EXCESS EXCAVATION SHALL BE ABSORBED FOR PAYMENT IN OTHER ITEMS.
- 4 CONTRACTOR SHALL PROVIDE TOUCH UP GALVANIZING SUPPLIED BY POLE MANUFACTURER TO MATCH POLE FINISH.
- 5 EXISTING UNDERGROUND UTILITY LINES ARE SHOWN ON THE DRAWINGS BASED UPON THE BEST INFORMATION AVAILABLE TO THE ENGINEER. THE ENGINEER CANNOT AND DOES NOT WARRANT THAT THIS INFORMATION IS COMPLETE OR ACCURATE. THE CONTRACTOR MUST COORDINATE DIRECTLY WITH THE INVOLVED UTILITY OWNERS (INCLUDING MISSISSIPPI POWER AND LIGHT UTILITIES) TO LOCATE AND MARK ALL UTILITIES OF CONSTRUCTION. COORDINATE LOCATION OF MDT LINES THROUGH THE HATTIESBURG DISTRICT OFFICE.
- 6 METAL POLES SHALL BE SHIPPED TO SITE LOCATION SECURED WITH NYLON OR OTHER SUITABLE TIE DOWN MEANS TO PREVENT DAMAGE TO POLE SURFACE. CABLE OR CHAIN LASHINGS ARE NOT TO BE USED.
- 7 A TREMIE SHALL BE USED TO PLACE CONCRETE FOR FOUNDATIONS.
- 8 HIGH MAST AND NON-BREAKAWAY POLES SHALL BE LOCATED OUTSIDE THE CLEAR ZONE, UNLESS PROTECTED BY GUARDRAIL OR BARRIER. POLES IN MEDIAN SHALL BE LOCATED AS CLOSE TO THE MEDIAN AS POSSIBLE. OTHER POLES SHALL BE PLACED AS SHOWN IN THE DETAILS.
- 9 THE DIMENSIONS OF CONCRETE MAINTENANCE PAD MAY BE ADJUSTED TO FIT THE FIELD CONDITIONS WHENEVER CONCRETE PAVED. THE JUNCTION BOX SHOULD BE LOCATED ON THE UPHILL SLOPE OF THE PAD TO REDUCE THE LIKELIHOOD OF WATER FLOWING INTO THE BOX. THE COST OF THE 6"x6" WIRE FABRIC REINFORCEMENT OR SUBSTITUTED SYNTHETIC FIBERS (MEETING THE REQUIREMENT OF SUBSECTION 711) SHALL BE INCLUDED IN THE UNIT COST OF THE JUNCTION BOX WITH CONCRETE PAD.
- 10 COORDINATES OF POLE LOCATIONS IS CENTER OF POLE FOUNDATION. THE CONTROLLING DIMENSION IS INDICATED IN DETAIL ON SHEET 4006.
- 11 STRUCTURE MOUNTED CONDUIT SHALL BE RIGID GALVANIZED STEEL. TRANSITION FROM PVS TO RIGID GALVANIZED STEEL SHALL BE MADE BELOW GRADE.



LOW MAST LIGHTING ASSEMBLY DESIGNATION AND CIRCUIT NO., 30FT. POLE - 175 WATT LED, TYPE II DISTRIBUTION LUMINAIRES. (TYPE 30-1-10-175)

UNDERGROUND SECONDARY BRANCH CIRCUIT, NO. OF CONDUCTORS



TYPE	MANUFACTURER	CATALOG NUMBER
LOW MAST	HOLOPHANE	MOLEDM_P2_40K_MVOL_T_MJR
UNDERPASS	EATON-MCGRAW EDISON	TT-02-740-UWO

- CONTRACTOR SHALL SUBMIT PHOTOMETRIC ANALYSIS OF THE PROJECT USING THE PROPOSED LUMINAIRES TO INDICATE THE PROPOSED LUMINAIRES MEET THE FOLLOWING LIGHTING REQUIREMENTS:
1. AVERAGE MAINTAINED ILLUMINATION 1.6FC
 2. UNIFORMITY (AVERAGE TO MINIMUM) RATIO 3:1
 3. LIGHTING LOSS FACTOR (LLF) 0.81
 4. MINIMUM LUMENS OUTPUT FOR LUMINAIRE
 5. NOMINAL LUMENS OUTPUT FOR LUMINAIRE
- UNDERPASS 5273 LUMENS



MDOT
MISSISSIPPI DEPARTMENT OF TRANSPORTATION

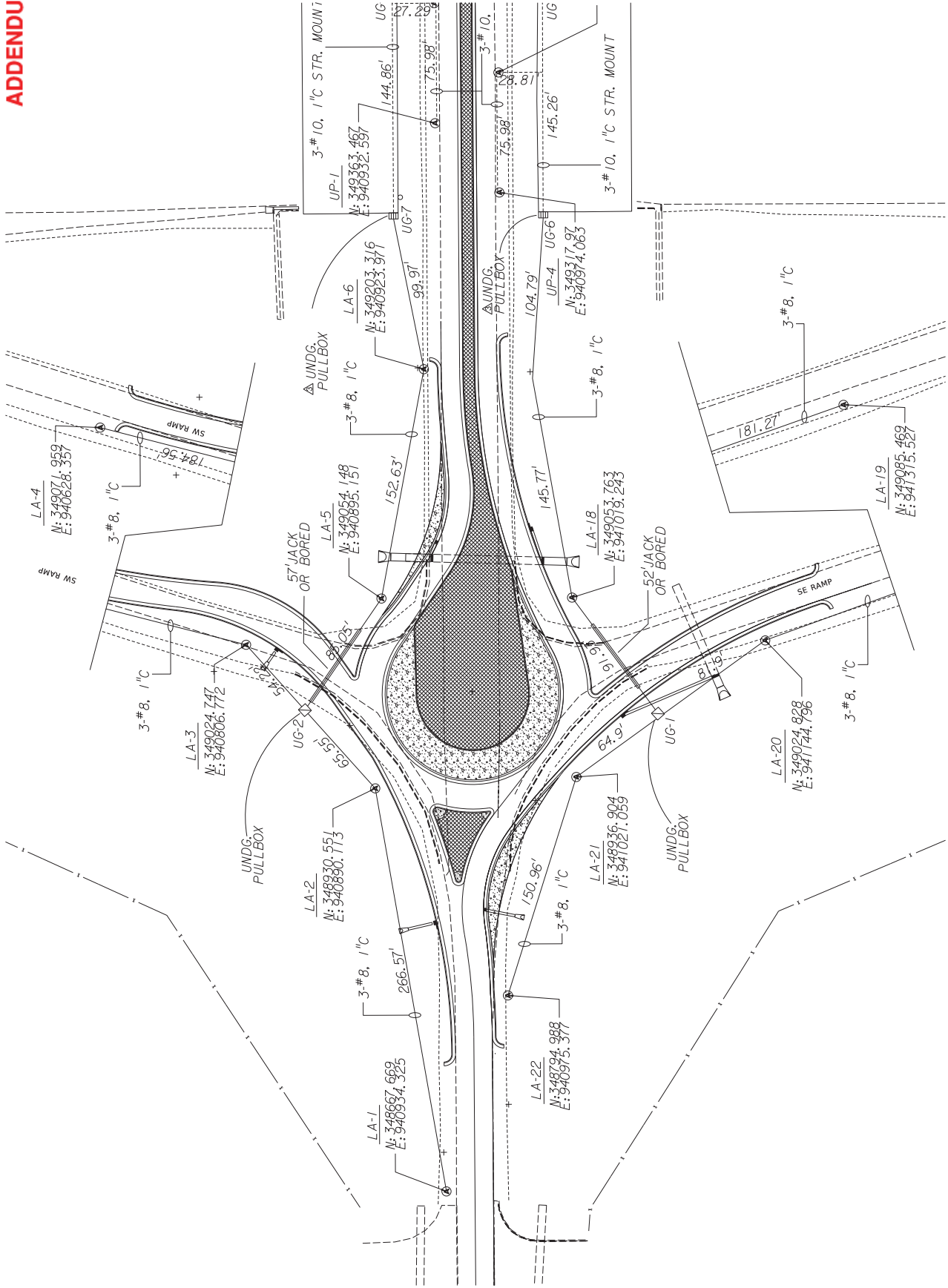
DESIGNED BY:
CHECKED BY:
DATE:

FMS CON: 108824/301000
PROJECT NO.: STBG-0086-00(009)
COUNTY: HARRISON

LOW MAST LIGHTING LAYOUT

WK. NO. LA-1
SHEET NO. 4002

ADDENDUM





MISSISSIPPI DEPARTMENT OF TRANSPORTATION
MDOT

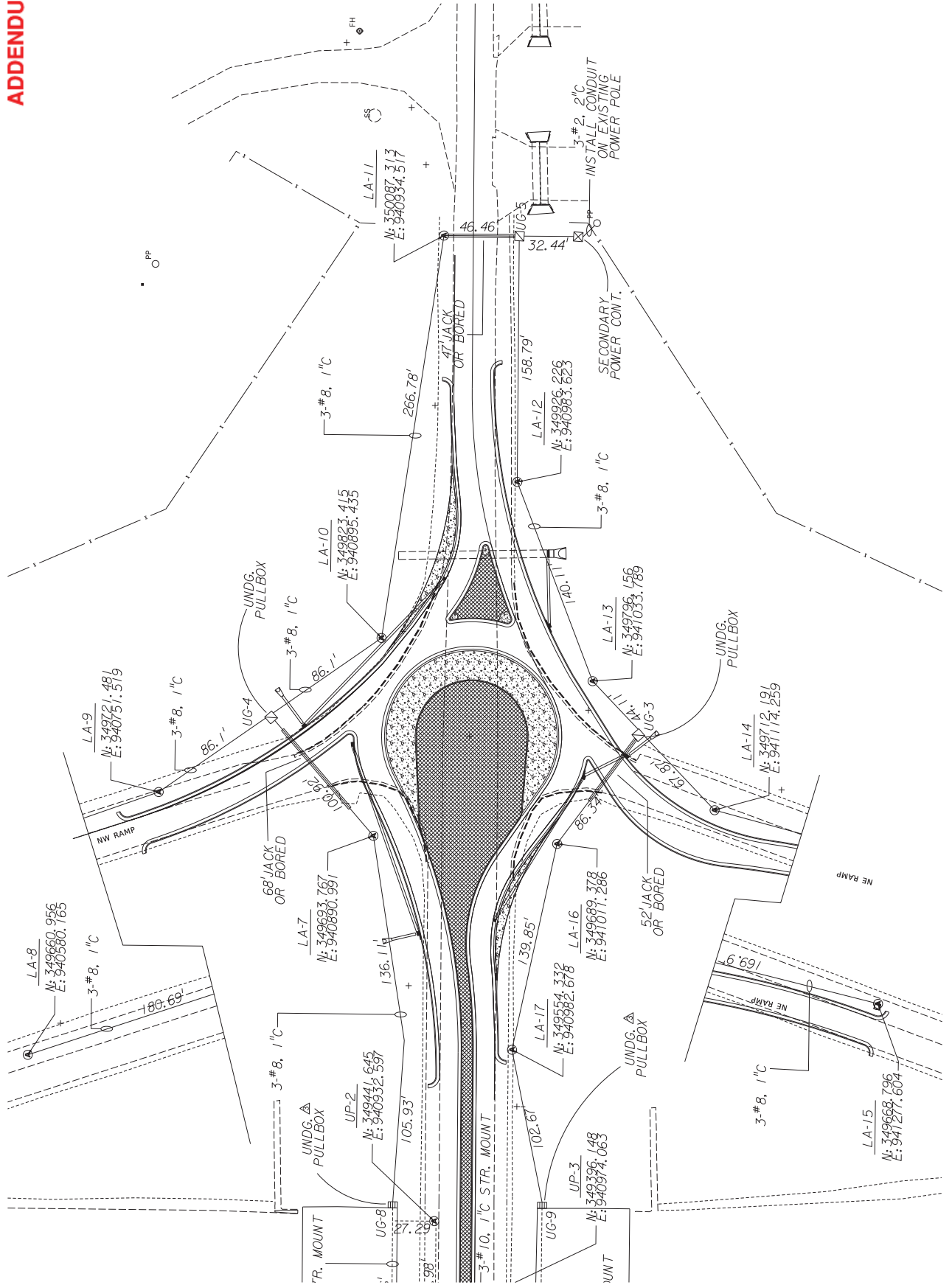
DESIGNED BY:
CHECKED BY:
DATE:

FMS CON: 108824/301000
PROJECT NO.: STBG-0086-00(009)
COUNTY: HARRISON

LOW MAST LIGHTING LAYOUT

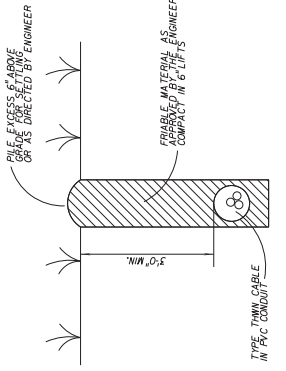
WK. NO. LA-2
SHEET NO. 4003

ADDENDUM

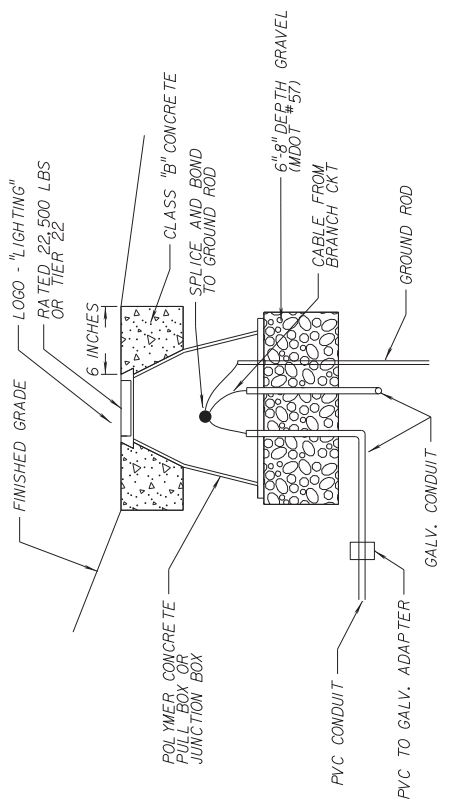




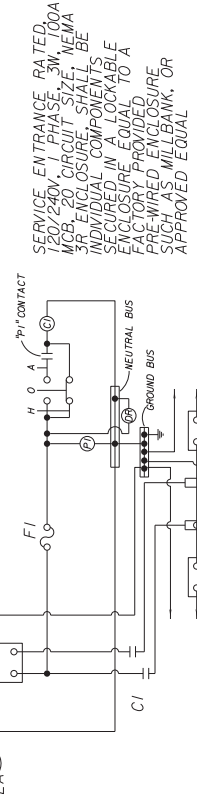
ADDENDUM



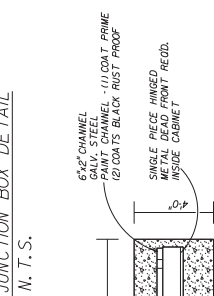
CABLE TRENCHING DETAIL
N. T. S.



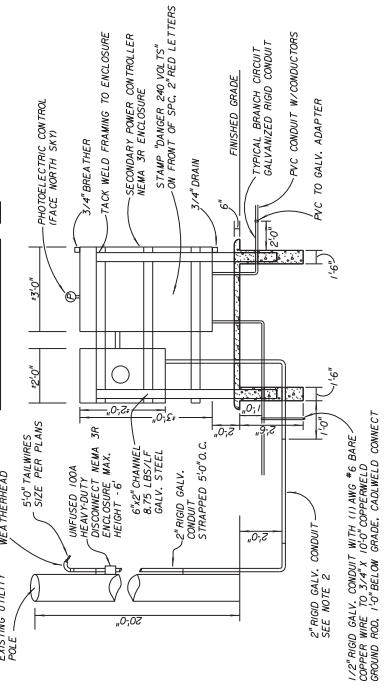
UNDERGROUND JUNCTION BOX DETAIL
N. T. S.



SCHEMATIC OF LIGHTING DETAIL
N. T. S.



SECONDARY POWER CONTROLLER DETAIL
N. T. S.



SECONDARY POWER CONTROLLER DETAIL
N. T. S.

NOTE
ALL COMPONENTS LOCATED INSIDE NEMA 3R EXCEPT THOSE NOTED WITH (C)
LABEL BREAKERS AS TO CIRCUIT NUMBER
USE PHOTOLIC ENGRAVED LABELS
H.O.A. - HAND-OFF-AUTO. SELECTOR SWITCH
C1 - CONTACTOR
CB - CIRCUIT BREAKER (NO. AS RECD. ON SCHEDULE)
DR - DUPLEX RECEPTACLE
PI - PHOTOELECTRIC CONTROL

1. ALL ITEMS SHOWN IN THIS DETAIL EXCEPT AS NOTED, SHALL BE INCLUDED IN PAY ITEM 682-FOOT.
2. CONDUIT AND CONDUCTOR FROM RISER POLE TO SPC SHALL BE IN PAY ITEM 682-240.6.

SERVICE ENTRANCE RATED, 120/240V, 1 PHASE, 3W, 100A MCB, 20 CIRCUIT SIZE, NEMA 3R ENCLOSURE SHALL BE INDIVIDUAL COMPONENTS SELECTED IN ACCORDANCE TO A FACTORY PROVIDED PRE-WIRED ENCLOSURE SUCH AS MILLBANK, OR APPROVED EQUAL

Roundabout Construction on Shriners Blvd. at I-10, known as Federal Aid Project No. STBG-0086-00(009) / 108824301 in Harrison County.

Line No.	Item Code	Adj Code	Quantity	Units	Description [Fixed Unit Price]
Roadway Items					
0010	201-A001		1	Lump Sum	Clearing and Grubbing
0020	202-B007		2,130	Square Yard	Removal of Asphalt Pavement, All Depths
0030	202-B088		1,015	Linear Feet	Removal of Curb & Gutter, All Types
0040	202-B092		491	Linear Feet	Removal of Curb, All Types
0050	202-B191		21	Linear Feet	Removal of Pipe, 8" And Above
0060	202-B215		10	Each	Removal of Sign Including Post & Footing
0070	203-A001	(E)	695	Cubic Yard	Unclassified Excavation, FM, AH
0080	203-EX017	(E)	3,625	Cubic Yard	Borrow Excavation, AH, FME, Class B7
0090	203-G001	(E)	50	Cubic Yard	Excess Excavation, FM, AH
0100	206-A001	(S)	19	Cubic Yard	Structure Excavation
0110	209-A005		3,693	Square Yard	Geotextile Stabilization, Type V, Non-Woven
0120	211-B001	(E)	167	Cubic Yard	Topsoil for Slope Treatment, Contractor Furnished
0130	213-C001		1	Ton	Superphosphate
0140	216-A001		13,140	Square Yard	Solid Sodding
0150	219-A001		263	Thousand Gallon	Watering [\$20.00]
0160	220-A001		2	Acre	Insect Pest Control [\$30.00]
0170	223-A001		2	Acre	Mowing [\$50.00]
0200	226-A001		2	Acre	Temporary Grassing
0210	237-A002		725	Linear Feet	Wattles, 20"
0220	245-A001		250	Linear Feet	Silt Dike
0230	246-B002		280	Linear Feet	Rockbags
0240	403-A002	(BA1)	684	Ton	12.5-mm, MT, Asphalt Pavement
0250	403-A005	(BA1)	409	Ton	19-mm, MT, Asphalt Pavement
0260	403-A006	(BA1)	511	Ton	19-mm, ST, Asphalt Pavement
0270	403-A014	(BA1)	513	Ton	9.5-mm, MT, Asphalt Pavement
0280	406-D001		2,481	Square Yard	Fine Milling of Bituminous Pavement, All Depths
0290	407-A001	(A2)	807	Gallon	Asphalt for Tack Coat
0300	503-C010		3,307	Linear Feet	Saw Cut, Full Depth
0310	601-B001	(S)	43	Cubic Yard	Class "B" Structural Concrete, Minor Structures
0320	602-A001	(S)	4,045	Pounds	Reinforcing Steel
0330	603-CA011	(S)	608	Linear Feet	18" Reinforced Concrete Pipe, Class III
0340	603-CA040	(S)	8	Linear Feet	30" Reinforced Concrete Pipe, Class III
0350	603-CB003	(S)	6	Each	18" Reinforced Concrete End Section

Line No.	Item Code	Adj Code	Quantity	Units	Description [Fixed Unit Price]
0360	603-CB005	(S)	1	Each	30" Reinforced Concrete End Section
0370	603-CE018	(S)	40	Linear Feet	44" x 27" Concrete Arch Pipe, Class A III
0380	603-CE028	(S)	8	Linear Feet	58" x 36" Concrete Arch Pipe, Class A III
0390	603-CF005	(S)	2	Each	44" x 27" Concrete Arch Pipe End Section
0400	603-CF007	(S)	1	Each	58" x 36" Concrete Arch Pipe End Section
0410	604-A001		1,766	Pounds	Castings
0420	604-B001		800	Pounds	Gratings
0430	609-B003	(S)	1,270	Linear Feet	Concrete Curb, Special Design
0440	609-C001	(S)	471	Linear Feet	Concrete Integral Curb, Type 1
0450	609-D012	(S)	4,708	Linear Feet	Combination Concrete Curb and Gutter Type 3A Modified
0460	616-A001	(S)	19	Square Yard	Concrete Median and/or Island Pavement, 10-inch
0470	616-A003	(S)	1,150	Square Yard	Concrete Median and/or Island Pavement, 12-inch
0480	618-A001		1	Lump Sum	Maintenance of Traffic
0490	619-A1003		8,614	Linear Feet	Temporary Traffic Stripe, Continuous White, Paint
0500	619-A2003		4,159	Linear Feet	Temporary Traffic Stripe, Continuous Yellow, Paint
0510	619-A5002		2,164	Linear Feet	Temporary Traffic Stripe, Detail, Paint
0520	619-A6003		557	Square Feet	Temporary Traffic Stripe, Legend, Paint
0530	619-D1001		48	Square Feet	Standard Roadside Construction Signs, Less than 10 Square Feet
0540	619-D2001		160	Square Feet	Standard Roadside Construction Signs, 10 Square Feet or More
0550	619-G4001		32	Linear Feet	Barricades, Type III, Double Faced
0560	619-G4005		32	Linear Feet	Barricades, Type III, Single Faced
0570	619-G5001		123	Each	Free Standing Plastic Drums
0580	620-A001		1	Lump Sum	Mobilization
0590	626-C001		3,616	Linear Feet	6" Thermoplastic Double Drop Edge Stripe, Continuous White
0600	626-E002		757	Linear Feet	6" Thermoplastic Double Drop Traffic Stripe, Continuous Yellow
0610	626-F002		2,281	Linear Feet	6" Thermoplastic Double Drop Edge Stripe, Continuous Yellow
0620	626-G004		371	Linear Feet	Thermoplastic Double Drop Detail Stripe, White
0630	626-G005		918	Linear Feet	Thermoplastic Double Drop Detail Stripe, Yellow
0640	626-H001		488	Square Feet	Thermoplastic Double Drop Legend, White
0650	627-L001		4	Each	Two-Way Yellow Reflective High Performance Raised Markers
0660	630-A001		94	Square Feet	Standard Roadside Signs, Sheet Aluminum, 0.080" Thickness
0670	630-A003		72	Square Feet	Standard Roadside Signs, Sheet Aluminum, 0.125" Thickness
0680	630-A005		128	Square Feet	Standard Roadside Signs, Sheet Aluminum, 0.1" Thickness

Line No.	Item Code	Adj Code	Quantity	Units	Description [Fixed Unit Price]
0690	630-C001		196	Linear Feet	Square Tube Posts, 4.0 lb/ft
0700	630-C005		128	Linear Feet	Square Tube Posts, 2.0 lb/ft
0710	682-A018		50	Linear Feet	Underground Branch Circuit, AWG 2, 3 Conductor
0720	682-A039		3,406	Linear Feet	Underground Branch Circuit, AWG 8, 3 Conductor
0730	682-B037		276	Linear Feet	Underground Branch Circuit, Jacked or Bored, AWG 8, 3 Conductor
0740	682-C009		498	Linear Feet	Structure Mounted Branch Circuit, AWG 10, 3 Conductor
0750	682-D002		4	Each	Structure Mounted Pull Box
0760	682-D004		31	Each	Underground Pull Box With Concrete Pad
0770	682-F001		1	Each	Secondary Power Controller
0780	683-B200		22	Each	Lighting Assembly, Low Mast, LED, Type 30-1-10-17
0790	683-C001		4	Each	Lighting Assembly, Underpass, Type A
0800	684-A005		87	Cubic Yard	Pole Foundation, 36" Diameter
0810	684-B005		330	Linear Feet	Slip Casing, 36" Diameter
0820	699-A001		1	Lump Sum	Roadway Construction Stakes
0830	907-234-A001		600	Linear Feet	Temporary Silt Fence
0840	907-616-C003	(S)	2,249	Square Feet	Colored and Imprinted Concrete Median and Island Pavement, 4-inch Thickness
0850	907-619-E3001		2	Each	Changeable Message Sign
ALTERNATE GROUP AA NUMBER 1					
0860	304-F001	(GT)	1,552	Ton	3/4" and Down Crushed Stone Base
ALTERNATE GROUP AA NUMBER 2					
0870	304-F002	(GT)	1,552	Ton	Size 610 Crushed Stone Base
ALTERNATE GROUP AA NUMBER 3					
0880	304-F003	(GT)	1,552	Ton	Size 825B Crushed Stone Base