

SECTION 905 -- PROPOSAL (CONTINUED)

I (We) hereby certify by digital signature and electronic submission via Bid Express of the Section 905 proposal below, that all certifications, disclosures and affidavits incorporated herein are deemed to be duly executed in the aggregate, fully enforceable and binding upon delivery of the bid proposal. I (We) further acknowledge that this certification shall not extend to the bid bond or alternate security which must be separately executed for the benefit of the Commission. This signature does not cure deficiencies in any required certifications, disclosures and/or affidavits. I (We) also acknowledge the right of the Commission to require full and final execution on any certification, disclosure or affidavit contained in the proposal at the Commission's election upon award. Failure to so execute at the Commission's request within the time allowed in the Standard Specifications for execution of all contract documents will result in forfeiture of the bid bond or alternate security.

Bidder acknowledges receipt of and has added to and made a part of the proposal and contract documents the following addendum (addenda):

| | | | |
|---------------------------|----------------------------|--------------------|-------------|
| ADDENDUM NO. <u> 1 </u> | DATED <u> 7/18/2024 </u> | ADDENDUM NO. _____ | DATED _____ |
| ADDENDUM NO. _____ | DATED _____ | ADDENDUM NO. _____ | DATED _____ |
| ADDENDUM NO. _____ | DATED _____ | ADDENDUM NO. _____ | DATED _____ |

| Number | Description |
|--------|--|
| 1 | Revised Bid Items; Revised or Added Plan Sheet Nos. 2-3, 6-7, 9-11, 16, 18 & 25; Amendment EBSx Download Required. |

TOTAL ADDENDA: 1
(Must agree with total addenda issued prior to opening of bids)

Respectfully Submitted,

DATE _____

Contractor

BY _____
Signature

TITLE _____

ADDRESS _____

CITY, STATE, ZIP _____

PHONE _____

FAX _____

E-MAIL _____

(To be filled in if a corporation)

Our corporation is chartered under the Laws of the State of _____ and the names, titles and business addresses of the executives are as follows:

President Address

Secretary Address

Treasurer Address

The following is my (our) itemized proposal.

BR-0016-01(034)/ 106912301000

Sunflower County(ies)

Revised 01/26/2016

MISSISSIPPI DEPARTMENT OF TRANSPORTATION

Inter-Departmental Memorandum

TO: Contract Administration Director
Via: Chief Engineer

DATE: July 18, 2024

FROM: Ass't. State Construction Engineer
Bradley K. Swain, P.E.

SUBJECT OR PROJECT NO: BR-0016-01(034)/ 106912301000

INFORMATION COPY TO:

COUNTY: Sunflower

District Engineer (Mr. Andy McNair)
Project Engineer
Central Records
File (Zivic)

The purpose of this addendum is to make the following changes:

Revised Bid Items; Revised or Added Plan Sheet Nos. 2-3, 6-7, 9-11, 16, 18 & 25; Amendment EBSx Download Required.

Also attached is Sheet 2 of Section 905 – Proposal (Addendum No. 1) which has been changed for the bidders acknowledgement of receipt and to incorporate in the bid proposal. This sheet shall be substituted for similar sheet now in the proposals.

BKS/bs

Attachments:

This will constitute formal approval of this addendum:

Transportation Department Approval:

Office of Chief Engineer

Date

Bridge Replacement on SR 8 over the Quiver River (Bridge No. 31.2), known as Federal Aid Project No. BR-0016-01(034) / 106912301 in Sunflower County.

| Line No. | Item Code | Adj Code | Quantity | Units | Description [Fixed Unit Price] |
|----------------------|-----------|----------|----------|-----------------|---|
| Roadway Items | | | | | |
| 0010 | 201-B001 | | 7 | Acre | Clearing and Grubbing |
| 0020 | 202-A001 | | 1 | Lump Sum | Removal of Obstructions |
| 0030 | 202-B007 | | 4,490 | Square Yard | Removal of Asphalt Pavement, All Depths |
| 0040 | 202-B136 | | 600 | Linear Feet | Removal of Guard Rail |
| 0050 | 202-B191 | | 16 | Linear Feet | Removal of Pipe, 8" And Above |
| 0060 | 203-A001 | (E) | 1,831 | Cubic Yard | Unclassified Excavation, FM, AH |
| 0070 | 203-EX020 | (E) | 12,625 | Cubic Yard | Borrow Excavation, AH, FME, Class B9 |
| 0080 | 209-A001 | | 49 | Square Yard | Geotextile Stabilization, Type III |
| 0090 | 209-A005 | | 5,525 | Square Yard | Geotextile Stabilization, Type V, Non-Woven |
| 0100 | 213-A001 | | 14 | Ton | Agricultural Limestone |
| 0110 | 213-C001 | | 4 | Ton | Superphosphate |
| 0120 | 215-A001 | | 14 | Ton | Vegetative Materials for Mulch |
| 0130 | 216-A001 | | 83 | Square Yard | Solid Sodding |
| 0140 | 217-A001 | | 1,111 | Square Yard | Ditch Liner |
| 0150 | 219-A001 | | 2 | Thousand Gallon | Watering [\$20.00] |
| 0160 | 220-A001 | | 4 | Acre | Insect Pest Control [\$30.00] |
| 0170 | 221-A001 | (S) | 14 | Cubic Yard | Concrete Paved Ditch |
| 0180 | 223-A001 | | 14 | Acre | Mowing [\$50.00] |
| 0190 | 225-A001 | | 7 | Acre | Grassing |
| 0200 | 226-A001 | | 7 | Acre | Temporary Grassing |
| 0210 | 235-A001 | | 70 | Each | Temporary Erosion Checks |
| 0220 | 237-A002 | | 315 | Linear Feet | Wattles, 20" |
| 0230 | 239-A001 | | 500 | Linear Feet | Temporary Slope Drains |
| 0240 | 246-B001 | | 125 | Each | Rockbags |
| 0270 | 403-A003 | (BA1) | 550 | Ton | 12.5-mm, ST, Asphalt Pavement |
| 0280 | 403-A006 | (BA1) | 671 | Ton | 19-mm, ST, Asphalt Pavement |
| 0290 | 403-A015 | (BA1) | 650 | Ton | 9.5-mm, ST, Asphalt Pavement |
| 0300 | 406-D001 | | 902 | Square Yard | Fine Milling of Bituminous Pavement, All Depths |
| 0310 | 407-A001 | (A2) | 966 | Gallon | Asphalt for Tack Coat |
| 0320 | 423-A001 | | 1 | Mile | Rumble Strips, Ground In |
| 0330 | 501-E001 | | 89 | Linear Feet | Expansion Joints, Without Dowels |
| 0340 | 501-I001 | | 89 | Linear Feet | Joint Filler, Wooden Board |

| Line No. | Item Code | Adj Code | Quantity | Units | Description [Fixed Unit Price] |
|----------|-----------|----------|----------|-------------|--|
| 0350 | 502-A001 | (C) | 183 | Square Yard | Reinforced Cement Concrete Bridge End Pavement |
| 0360 | 601-B002 | (S) | 3 | Cubic Yard | Class "C" Structural Concrete, Minor Structures |
| 0370 | 603-CA011 | (S) | 48 | Linear Feet | 18" Reinforced Concrete Pipe, Class III |
| 0380 | 605-O002 | (S) | 89 | Linear Feet | 4" Perforated Sewer Pipe for Underdrains, SDR 23.5 |
| 0390 | 605-P002 | (S) | 10 | Linear Feet | 4" Non-perforated Sewer Pipe for Underdrains, SDR 23.5 |
| 0400 | 605-W001 | (GY) | 4 | Cubic Yard | Filter Material for Combination Storm Drain and/or Underdrains, Type A, FM |
| 0410 | 606-B001 | | 300 | Linear Feet | Guard Rail, Class A, Type 1 |
| 0420 | 606-D022 | | 4 | Each | Guard Rail, Bridge End Section, Type I |
| 0430 | 606-E001 | | 4 | Each | Guard Rail, Terminal End Section |
| 0440 | 615-A024 | (S) | 40 | Linear Feet | Concrete Bridge End Barrier, 37.5" |
| 0450 | 617-A001 | | 8 | Each | Right-of-Way Marker |
| 0460 | 618-C001 | | 1 | Lump Sum | Construction and Removal of Detour Bridge |
| 0470 | 618-D001 | | 1 | Lump Sum | Construction and Removal of Detour |
| 0480 | 618-E001 | | 970 | Linear Feet | Detour Bridge Piling |
| 0490 | 618-F001 | | 1 | Lump Sum | Detour Bridge PDA Test Pile |
| 0500 | 619-A1003 | | 6,300 | Linear Feet | Temporary Traffic Stripe, Continuous White, Paint |
| 0510 | 619-A4003 | | 2,000 | Linear Feet | Temporary Traffic Stripe, Skip Yellow, Paint |
| 0520 | 619-A5002 | | 2,000 | Linear Feet | Temporary Traffic Stripe, Detail, Paint |
| 0530 | 619-A6004 | | 96 | Linear Feet | Temporary Traffic Stripe, Legend, Paint |
| 0540 | 619-C7001 | | 25 | Each | Two-Way Yellow Reflective High Performance Raised Marker |
| 0550 | 619-D1001 | | 46 | Square Feet | Standard Roadside Construction Signs, Less than 10 Square Feet |
| 0560 | 619-D2001 | | 263 | Square Feet | Standard Roadside Construction Signs, 10 Square Feet or More |
| 0570 | 619-F3001 | | 18 | Each | Delineators, Guard Rail, White |
| 0580 | 619-G4001 | | 24 | Linear Feet | Barricades, Type III, Double Faced |
| 0590 | 619-G4005 | | 48 | Linear Feet | Barricades, Type III, Single Faced |
| 0600 | 619-G5001 | | 20 | Each | Free Standing Plastic Drums |
| 0610 | 619-G7001 | | 2 | Each | Warning Lights, Type "B" |
| 0620 | 619-H2002 | | 2 | Each | Traffic Signal, Portable, Type 2 |
| 0630 | 620-A001 | | 1 | Lump Sum | Mobilization |
| 0640 | 626-C001 | | 4,000 | Linear Feet | 6" Thermoplastic Double Drop Edge Stripe, Continuous White |
| 0650 | 626-D002 | | 2,000 | Linear Feet | 6" Thermoplastic Double Drop Traffic Stripe, Skip Yellow |
| 0660 | 627-L001 | | 25 | Each | Two-Way Yellow Reflective High Performance Raised Markers |
| 0670 | 630-A003 | | 18 | Square Feet | Standard Roadside Signs, Sheet Aluminum, 0.125" Thickness |
| 0680 | 630-C003 | | 36 | Linear Feet | Steel U-Section Posts, 3.0 lb/ft |

| Line No. | Item Code | Adj Code | Quantity | Units | Description [Fixed Unit Price] |
|------------------------------------|---------------|----------|----------|-------------|--|
| 0690 | 630-C005 | | 30 | Linear Feet | Square Tube Posts, 2.0 lb/ft |
| 0700 | 630-C1001 | | 6 | Linear Feet | Square Post Inner Sleeve |
| 0710 | 630-G005 | | 4 | Each | Type 3 Object Markers, OM-3R or OM-3L, Post Mounted |
| 0720 | 699-A001 | | 1 | Lump Sum | Roadway Construction Stakes |
| 0730 | 907-234-A001 | | 200 | Linear Feet | Temporary Silt Fence |
| 0740 | 907-234-C001 | | 500 | Linear Feet | Super Silt Fence |
| 0750 | 907-234-F001 | | 625 | Linear Feet | Turbidity Barrier |
| 0760 | 907-618-A001 | | 1 | Lump Sum | Maintenance of Traffic |
| 0770 | 907-619-E3001 | | 2 | Each | Changeable Message Sign |
| ALTERNATE GROUP AA NUMBER 1 | | | | | |
| 0780 | 304-F001 | (GT) | 2,500 | Ton | 3/4" and Down Crushed Stone Base |
| ALTERNATE GROUP AA NUMBER 2 | | | | | |
| 0790 | 304-F002 | (GT) | 2,500 | Ton | Size 610 Crushed Stone Base |
| ALTERNATE GROUP AA NUMBER 3 | | | | | |
| 0800 | 304-F003 | (GT) | 2,500 | Ton | Size 825B Crushed Stone Base |
| ALTERNATE GROUP BB NUMBER 1 | | | | | |
| 0810 | 605-W002 | (GY) | 54 | Cubic Yard | Filter Material for Combination Storm Drain and/or Underdrains, Type B, FM |
| ALTERNATE GROUP BB NUMBER 2 | | | | | |
| 0820 | 605-W003 | (GY) | 54 | Cubic Yard | Filter Material for Combination Storm Drain and/or Underdrains, Type C, FM |
| Bridge Items | | | | | |
| 0830 | 501-K001 | | 1,789 | Square Yard | Transverse Grooving |
| 0840 | 803-P001 | (S) | 1,155 | Linear Feet | 24" Steel Pipe Piling, Wall Thickness 0.500" |
| 0850 | 803-P007 | (S) | 1,615 | Linear Feet | 18" Steel Pipe Piling, Wall Thickness 0.500" |
| 0860 | 803-P008 | (S) | 1,070 | Linear Feet | 20" Steel Pipe Piling, Wall Thickness 0.500" |
| 0870 | 804-C170 | (S) | 805 | Linear Feet | 135' Prestressed Concrete Beam, Type FIB-54 |
| 0880 | 804-C201 | (S) | 1,130 | Linear Feet | 95' Prestressed Concrete Beam, Type FIB-36 |
| 0890 | 804-C208 | (S) | 712 | Linear Feet | 60' Prestressed Concrete Beam, Type FIB-36 |
| 0900 | 805-A001 | (S) | 255,704 | Pounds | Reinforcement |
| 0910 | 805-C001 | (S) | 6,060 | Pounds | Reinforcement, Corrosion Resistant |
| 0920 | 813-A004 | (S) | 894 | Linear Feet | Concrete Railing, 36" |
| 0930 | 815-A007 | (S) | 940 | Ton | Loose Riprap, Size 300 |
| 0940 | 815-E001 | (S) | 752 | Square Yard | Geotextile under Riprap |
| 0950 | 907-803-B001 | (S) | 1 | Each | Conventional Static Pile Load Test [\$5,000.00] |
| 0960 | 907-803-I004 | (S) | 3 | Each | PDA Test Pile, Steel Pipe Pile |

| Line No. | Item Code | Adj Code | Quantity | Units | Description [Fixed Unit Price] |
|-----------------|------------------|-----------------|-----------------|--------------|---------------------------------------|
| 0970 | 907-803-J001 | (S) | 3 | Each | Pile Restrike |
| 0980 | 907-804-A001 | (S) | 548 | Cubic Yard | Bridge Concrete, Class BDx |
| 0990 | 907-804-A002 | (S) | 225 | Cubic Yard | Bridge Concrete, Class AA |
| 1000 | 907-823-A002 | | 88 | Linear Feet | Preformed Joint Seal, Type II |

ADDENDUM

| | |
|-------|-----------------|
| STATE | PROJECT NO. |
| MISS. | BR-0016-01(034) |

WKG. NO. SH. NO.

DESCRIPTION OF SHEET

WKG. NO. SH. NO.

| | | | |
|---|---------|--|----|
| TITLE SHEET | | | |
| DETAILED INDEX AND GENERAL NOTES SHEETS (4) | | | |
| DETAILED INDEX | DI-1 | | 2 |
| DETAILED INDEX | DI-2 | | 3 |
| GENERAL NOTES | GN-1 | | 4 |
| GENERAL NOTES | GN-2 | | 5 |
| TYPICAL SECTION SHEETS (3) | | | |
| TYPICAL SECTIONS - SR 8 - NEW CONSTRUCTION AND MILLING & OVERLAY | TS-1 | | 6 |
| TYPICAL SECTIONS - SR 8 - DETOUR | TS-2 | | 7 |
| MISCELLANEOUS TYPICAL SECTION DETAILS | MSD-1 | | 8 |
| SUMMARY OF QUANTITY SHEETS (2) | | | |
| SUMMARY OF QUANTITIES | SQ-1 | | 9 |
| SUMMARY OF QUANTITIES | SQ-2 | | 10 |
| ESTIMATED QUANTITY SHEETS (4) | | | |
| ESTIMATED QUANTITIES - SIDE DRAINS AND GUARDRAIL | EQ-1 | | 11 |
| ESTIMATED QUANTITIES - EARTHWORK, TRAFFIC CONTROL ITEMS AND BRIDGE END PAVEMENT | EQ-2 | | 12 |
| ESTIMATED QUANTITIES - REMOVAL ITEMS | EQ-3 | | 13 |
| ESTIMATED QUANTITIES FOR TRAFFIC CONTROL SIGNS | TCP-Q | | 14 |
| PLAN AND PROFILE SHEETS (4) | | | |
| STA. 684+50 - STA. 694+00 | 3 | | 15 |
| STA. 85+08.903 - STA. 94+00 - DETOUR | 3A | | 16 |
| STA. 694+00 - STA. 703+50 | 4 | | 17 |
| STA. 94+00 - STA. 102+06.097 - DETOUR | 4A | | 18 |
| SPECIAL DESIGN SHEETS (14) | | | |
| VEGETATION SCHEDULE | VS-1 | | 19 |
| CONSTRUCTION SIGNING | DCS-1 | | 20 |
| TRAFFIC CONTROL PLAN - HWY. 8 @ QUIVER RIVER PHASE 1 & 3 | TC-1 | | 21 |
| TRAFFIC CONTROL PLAN - HWY. 8 @ QUIVER RIVER PHASE 2 | TC-2 | | 22 |
| TRAFFIC CONTROL PLAN - HWY. 8 @ QUIVER RIVER PHASE 2 | TC-2A | | 23 |
| TRAFFIC CONTROL PLAN - HWY. 8 @ QUIVER RIVER PHASE 2 | TC-2B | | 24 |
| PORTABLE TRAFFIC SIGNAL INSTALLATION | TTS-1 | | 25 |
| RIPARIAN BUFFER - BRIDGE NO. 31.2 | ECP-RB | | 26 |
| EROSION CONTROL PLAN | ECP-3 | | 27 |
| EROSION CONTROL PLAN | ECP-4 | | 28 |
| RIGHT OF WAY MARKERS | ROW-1 | | 29 |
| BRIDGE END PAVEMENT WITH RAIL, OVERLAY AND SLEEPER SLAB (NEW CONSTRUCTION) | SDBE-1 | | 30 |
| BRIDGE END PAVEMENT RAIL (37.5" RAIL HEIGHT) | SDBER-1 | | 31 |
| SIGN SUPPORT HARDWARE - 2.0" SQUARE POST | TSS-2 | | 32 |

| | | | |
|--|--------|--|------|
| STANDARD DRAWING SHEETS (52) | | | |
| BRIDGE END PAVEMENT WITH RAIL, OVERLAY, AND SLEEPER SLAB (NEW CONSTRUCTION) | BE-1 | | 6007 |
| PAVEMENT MARKING DETAILS FOR 2-LANE & 4-LANE DIVIDED ROADWAYS | PM-1 | | 6051 |
| TYPICAL TEMPORARY EROSION SEDIMENT CONTROL/SEDIMENT CONTROL APPLICATIONS | ECD-1 | | 6101 |
| DETAILS OF SEDIMENT BARRIER APPLICATIONS | ECD-2 | | 6102 |
| DETAILS OF SILT FENCE INSTALLATION | ECD-3 | | 6103 |
| DITCH CHECK STRUCTURES, TYPICAL APPLICATIONS AND DETAILS | ECD-4 | | 6104 |
| TEMPORARY EROSION, SEDIMENT, AND WATER POLLUTION CONTROL MEASURES (SILT FENCE AND HAY BALE DITCH CHECKS) | ECD-5 | | 6105 |
| DETAILS OF EROSION CONTROL WATTLE DITCH CHECK | ECD-6 | | 6106 |
| DETAILS OF EROSION CONTROL SILT DIKE DITCH CHECK | ECD-7 | | 6107 |
| ROCK DITCH CHECK | ECD-8 | | 6108 |
| ROCK FILTER DAM | ECD-9 | | 6109 |
| ROCK DITCH CHECK WITH SLUMP EXCAVATION AND ROCK FILTER DAM | ECD-10 | | 6110 |
| TYPICAL APPLICATIONS AND DETAILS FOR INLET CONSTRUCTION | ECD-11 | | 6111 |
| INLET PROTECTION DETAILS FOR SEDIMENT CONTROL | | | |
| STONE ON GRADES AND SACS | ECD-12 | | 6112 |
| INLET PROTECTION DETAILS OF WATTLES | ECD-13 | | 6113 |
| INLET PROTECTION DETAILS OF MANUFACTURED INLET PROTECTION DEVICE | ECD-14 | | 6114 |
| INLET PROTECTION DETAILS OF SANDBAGS | ECD-15 | | 6115 |
| STABILIZED CONSTRUCTION ENTRANCE | ECD-16 | | 6116 |
| TEMPORARY STREAM DIVERSION | ECD-18 | | 6118 |
| TEMPORARY STREAM DIVERSION (BOX EXTENSION) | ECD-19 | | 6119 |
| FLOATING TURBIDITY CURTAIN | ECD-20 | | 6120 |
| DETAILS OF EROSION CONTROL SANDBAG DITCH CHECK | ECD-21 | | 6121 |
| SEDIMENT RETENTION BARRIER | ECD-22 | | 6122 |
| DETAILS OF TYPICAL DITCH TREATMENTS | DT-1 | | 6123 |
| DITCH TREATMENT INSTALLATION DETAIL | | | |
| FOR SOIL REINFORCING MAT | DT-1A | | 6124 |
| TYPICAL TEMPORARY EROSION CONTROL MEASURES (SLOPE DRAIN AND TYPE A SILT BASIN) | BAS-A | | 6125 |
| SUPER SILT FENCE | SSF-1 | | 6130 |
| GUARDRAIL: "W" BEAM (STEEL POSTS) | GR-1B | | 6203 |
| GUARDRAIL: BRIDGE END SECTION - TYPE I (STEEL POSTS) (NEW CONSTRUCTION) | GR-2G | | 6211 |
| GUARDRAIL TYPICAL INSTALLATION AT BRIDGE APPROACHES FOR 2-LANE, 2-WAY HIGHWAY | GR-4A | | 6215 |
| GUARDRAIL: RUB RAIL HARDWARE | GR-RR | | 6218 |
| GUARDRAIL (TEMPORARY): TYPICAL INSTALLATION AT DETOUR BRIDGE ENDS | TGR-1 | | 6219 |

| |
|----------------------------|
| PS & E PLANS-DATE 3/8/2024 |
| FMS CON. # 106912/301000 |
| REVISIONS |
| DATE 7/18/24 |
| SHEET NO. 3 |
| BY 7, 9-11, 16, 18, 25 |
| GTW |

WALDON

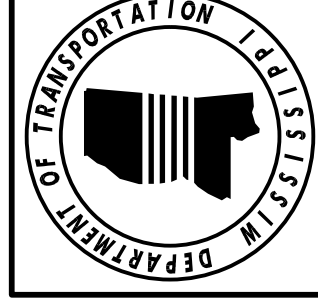
MISSISSIPPI DEPARTMENT OF TRANSPORTATION

DETAILED INDEX

PROJ. NO.: BR-0016-01(034)
COUNTY: SUNFLOWER

FILE NAME: DL.GDN
DESIGN TEAM: WALDON

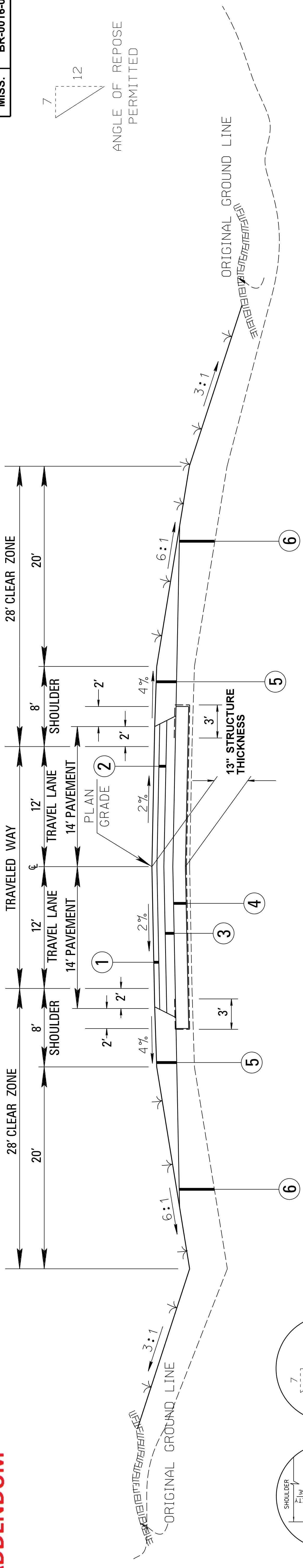
WORKING NUMBER: DI-1
SHEET NUMBER: 2



ADDENDUM

FMS CON: 106912 / 301000

| | |
|-------|-----------------|
| STATE | PROJECT NO. |
| MISS. | BR-0016-01(034) |

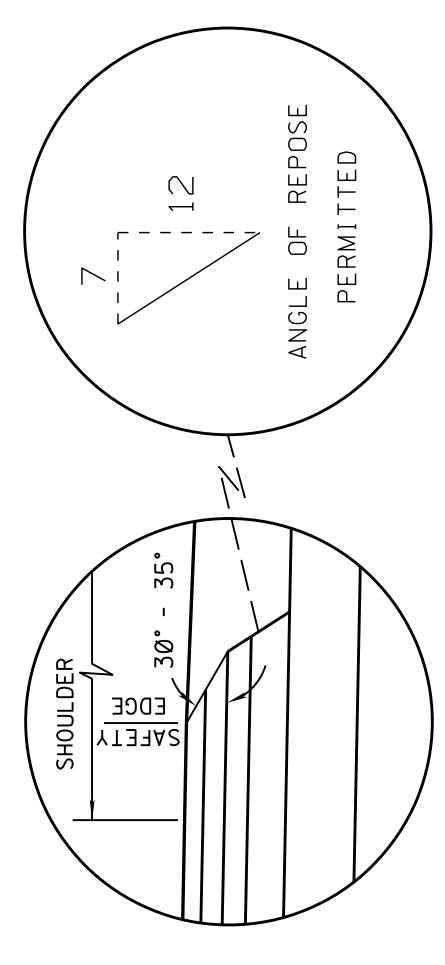


NEW CONSTRUCTION SR 8

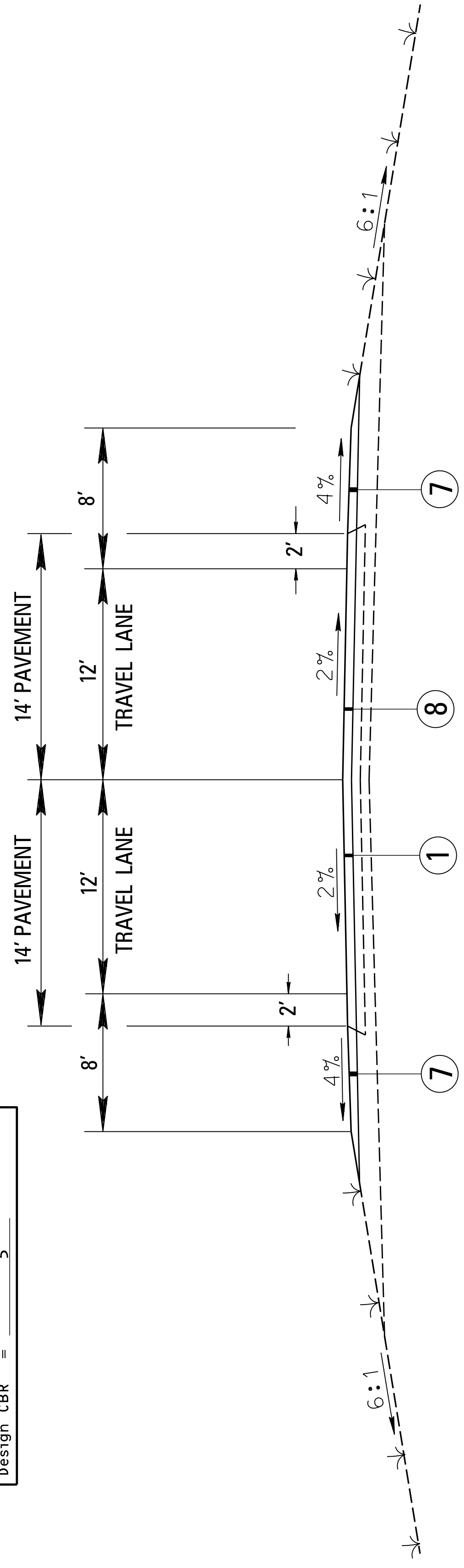
STA. 684+93.2661 - BRIDGE ABUT. STA. 691+85
BRIDGE ABUT. STA. 696+30 - STA. 702+46.1176

| DATA FOR PAVEMENT DETERMINATION | |
|---------------------------------|---------------|
| (C 2025) ADT = | 1,650 Current |
| (C 2035) ADT = | 1,900 Design |
| (C 2045) ADT = | 2,200 Design |
| DHV = | 210 |
| D = | 60 % of DHV |
| T = | 15 % of DHV |
| T (total) = | 1,445 / 1000 |
| 18K (Rigid) = | 935 / 1000 |
| 18K (Flex) = | 935 / 1000 |
| Design CBR = | 5 |

SAFETY EDGE REQ'D
TOP 2 LIFTS ONLY
(NOT A PAY ITEM)
NEW CONSTRUCTION



- ① 1.50" ASPHALT PAVEMENT, ST (9.5mm MIXTURE) (1 @ 1.5") REQ'D.
- ② 2.50" ASPHALT PAVEMENT, ST (12.5mm MIXTURE) (1 @ 2.5") REQ'D.
- ③ 3.0" ASPHALT PAVEMENT, ST (19mm MIXTURE) (1 @ 3.0") REQ'D.
- ④ 6.00" CRUSHED STONE W / GEOTEXTILE FABRIC (NON-WOVEN) REQ'D.
- ⑤ 7.00" CRUSHED STONE W / GEOTEXTILE FABRIC (NON-WOVEN) REQ'D.
- ⑥ BORROW MATERIAL (B-9) REQ'D.
- ⑦ 1.50" CRUSHED STONE W / GEOTEXTILE FABRIC (NON-WOVEN) REQ'D.
- ⑧ 1.50" & VAR. FINE MILLING REQ'D.



MILLING & OVERLAY SR 8

B.O.P. STA. 684+00.0371 - STA. 684+93.2661
STA. 702+46.1176 - E.O.P. STA. 704+00

INDICATES AREA TO BE TREATED IN ACCORDANCE WITH
THE VEGETATION SCHEDULE. SEE WK. SH. NO. VS-1

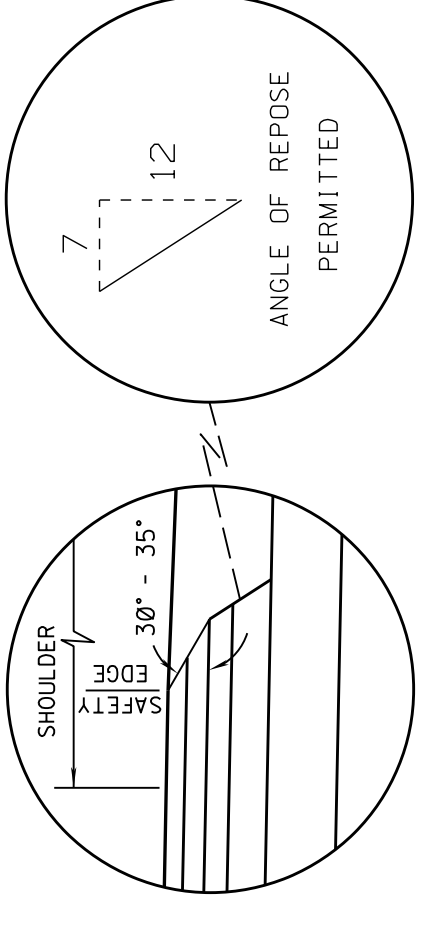
NOT TO SCALE

| | |
|--|------|
| MISSISSIPPI DEPARTMENT OF TRANSPORTATION | |
| TYPICAL SECTIONS | |
| NEW CONSTRUCTION | |
| MILLING & OVERLAY | |
| S.R. 8 | |
| PROJ. NO.: BR-0016-01(034) | |
| COUNTY: SUNFLOWER | |
| WORKING NUMBER | TS-1 |
| SHEET NUMBER | 6 |

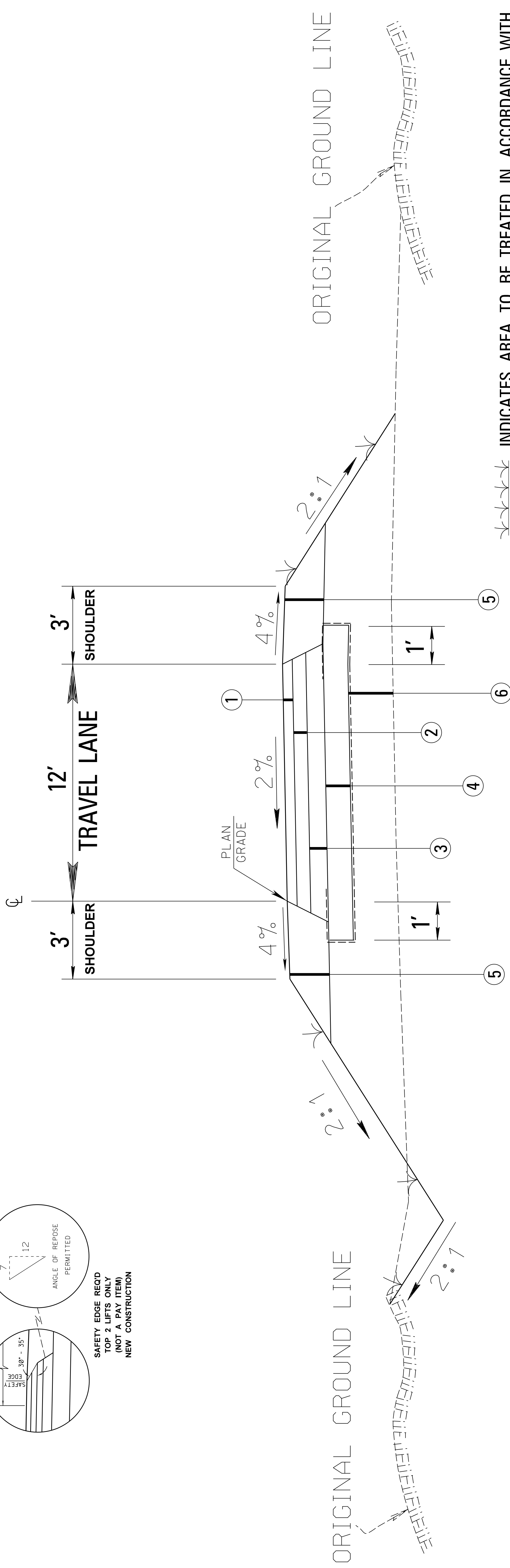


| | |
|--------------|-----------------|
| BY | GTW |
| DATE | 7/17/24 |
| REVISION | REVISED TYPICAL |
| FILE NAME: | typ8.dgn |
| DESIGN TEAM: | B. LEWIS |
| CHECKED: | |
| DATE: | |

ADDENDUM



SAFETY EDGE REQ'D
TOP 2 LIFTS ONLY
(NOT A PAY ITEM)
NEW CONSTRUCTION



INDICATES AREA TO BE TREATED IN ACCORDANCE WITH THE VEGETATION SCHEDULE. SEE WK. SH. NO. VS-1

- ① 1.50" ASPHALT PAVEMENT, ST (9.5mm MIXTURE) (1 @ 1.5") REQ'D.
- ② 2.50" ASPHALT PAVEMENT, ST (12.5mm MIXTURE) (1 @ 2.5") REQ'D.
- ③ 3.0" ASPHALT PAVEMENT, ST (19mm MIXTURE) (1 @ 3.0") REQ'D.
- ④ 6.00" CRUSHED STONE W / GEOTEXTILE FABRIC (NON-WOVEN) REQ'D.
- ⑤ 7.00" CRUSHED STONE W / GEOTEXTILE FABRIC (NON-WOVEN) REQ'D.
- ⑥ BORROW MATERIAL (B-9) REQ'D.

DETOUR

| | |
|--|------------------|
| MISSISSIPPI DEPARTMENT OF TRANSPORTATION | |
| TYPICAL SECTION | |
| SR 8 DETOUR | |
| PROJ. NO.: BR-0016-01(034) | WORKING NUMBER |
| COUNTY: SUNFLOWER | TS-2 |
| FILE NAME: Typ8.dgn | SHEET NUMBER |
| DESIGN TEAM: B. LEWIS | CHECKED |
| DATE | DATE |
| 7/17/24 | 7/17/24 |
| REVISION TYPICAL | REVISION TYPICAL |
| BY | BY |
| GTW | GTW |



ADDENDUM


| | |
|-------|-----------------|
| STATE | PROJECT NO. |
| MISS | BR-0016-01(034) |

SUMMARY OF QUANTITIES (SHEET 1)

| PAY ITEM NO. | PAY ITEM | UNIT | SUNFLOWER : 106912-301000 | |
|--------------|--|------|---------------------------|-------|
| | | | Prelim | Final |
| 201-B001 | Clearing and Grubbing | ACRE | 7 | |
| 202-A001 | Removal of Obstructions | LS | 1 | |
| 202-B007 | Removal of Asphalt Pavement, All Depths | SY | 4,490 | |
| 202-B136 | Removal of Guard Rail | LF | 600 | |
| 202-B191 | Removal of Pipe, 8" And Above | LF | 16 | |
| 203-A001 | Unclassified Excavation, FM, AH | CY | 1,831 | |
| 203-EX020 | Borrow Excavation, AH, FME, Class B9 | CY | 12,625 | |
| 209-A001 | Geotextile Stabilization, Type III | SY | 49 | |
| 209-A005 | Geotextile Stabilization, Type V, Non-Woven | SY | 5,525 | |
| 213-A001 | Agricultural Limestone | TON | 14 | |
| 213-C001 | Superphosphate | TON | 4 | |
| 215-A001 | Vegetative Materials for Mulch | TON | 14 | |
| 216-A001 | Solid Sodding | SY | 83 | |
| 217-A001 | Ditch Liner | SY | 1,111 | |
| 219-A001 | Watering | KGAL | 2 | |
| 220-A001 | Insect Pest Control | ACRE | 4 | |
| 221-A001 | Concrete Paved Ditch | CY | 14 | |
| 223-A001 | Mowing | ACRE | 14 | |
| 225-A001 | Grassing | ACRE | 7 | |
| 226-A001 | Temporary Grassing | ACRE | 7 | |
| 907-234-A001 | Temporary Silt Fence | LF | 200 | |
| 907-234-C001 | Super Silt Fence | LF | 500 | |
| 907-234-F001 | Turbidity Barrier | LF | 625 | |
| 235-A001 | Temporary Erosion Checks | EA | 70 | |
| 237-A002 | Wattles, 20" | LF | 315 | |
| 239-A001 | Temporary Slope Drains | LF | 500 | |
| 246-B001 | Rockbags | EA | 125 | |
| 304-F001 | 3/4" and Down Crushed Stone Base | TON | 2,500 | |
| | OR | | | |
| 304-F002 | Size 610 Crushed Stone Base | TON | 2,500 | |
| | OR | | | |
| 304-F003 | Size 825B Crushed Stone Base | TON | 2,500 | |
| 403-A003 | 12.5-mm, ST, Asphalt Pavement | TON | 550 | |
| 403-A006 | 19-mm, ST, Asphalt Pavement | TON | 671 | |
| 403-A015 | 9.5-mm, ST, Asphalt Pavement | TON | 650 | |
| 406-D001 | Fine Milling of Bituminous Pavement, All Depths | SY | 902 | |
| 407-A001 | Asphalt for Tack Coat | GAL | 966 | |
| 423-A001 | Rumble Strips, Ground In | MI | 1 | |
| 501-E001 | Expansion Joints, Without Dowels | LF | 89 | |
| 501-I001 | Joint Filler, Wooden Board | LF | 89 | |
| 502-A001 | Reinforced Cement Concrete Bridge End Pavement | SY | 183 | |
| 601-B002 | Class "C" Structural Concrete, Minor Structures | CY | 3 | |
| 603-CA011 | 18" Reinforced Concrete Pipe, Class III | LF | 48 | |
| 605-O002 | 4" Perforated Sewer Pipe for Underdrains, SDR 23.5 | LF | 89 | |

- ① 1 @ 30', 1 @ 40", 1 @ 59'-9", 1 @ 59'-9", 1 @ 90', 1 @ 59'-9", 1 @ 30' SPANS
- ② 25% SHRINKAGE FACTOR.
- ③ INCLUDES 11 C.Y. FOR PAVED FLUMES AT BRIDGE ENDS AND 3 C.Y. FOR UNDERDRAIN APRONS.



| | |
|---|---|
| MISSISSIPPI DEPARTMENT OF TRANSPORTATION SUMMARY OF QUANTITIES | |
|  | Working Number SQ-1 |
| PROJ NO: BR-0016-01(034) COUNTY: SUNFLOWER | |
| FILENAME: SQ-8-final-2023-12-15 Design Team WALDON Checked | Sheet Number 9 Date 12-15-2023 |

| | |
|------------|--------------------|
| GW | REVISION |
| 07/18/2024 | REVISED QUANTITIES |


ADDENDUM

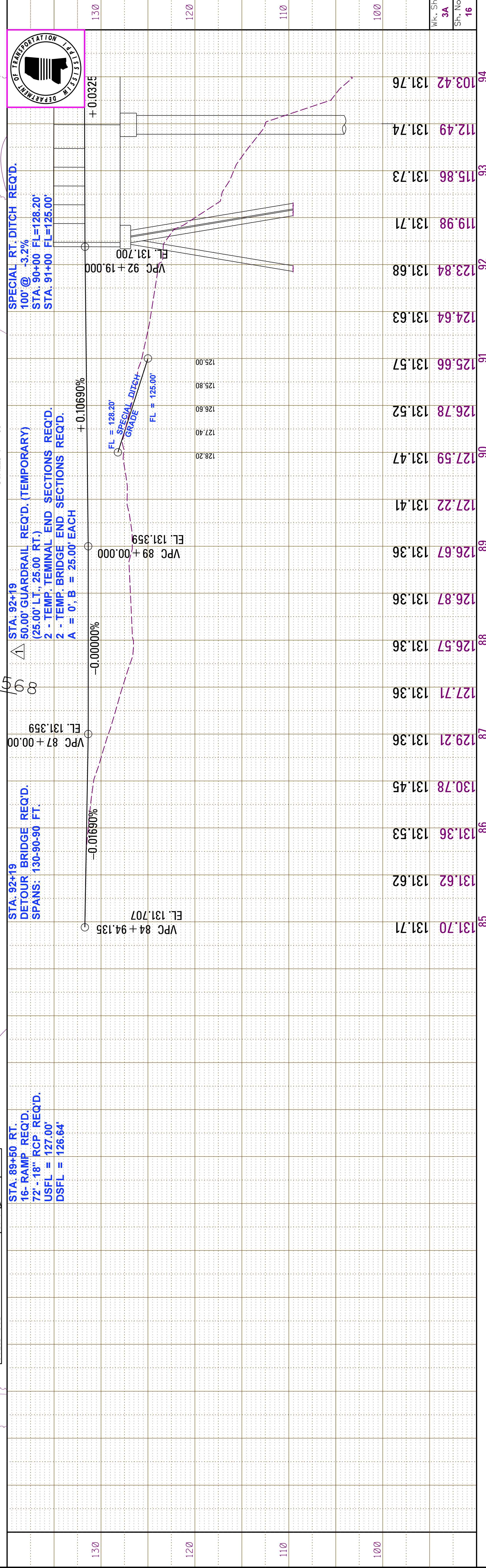
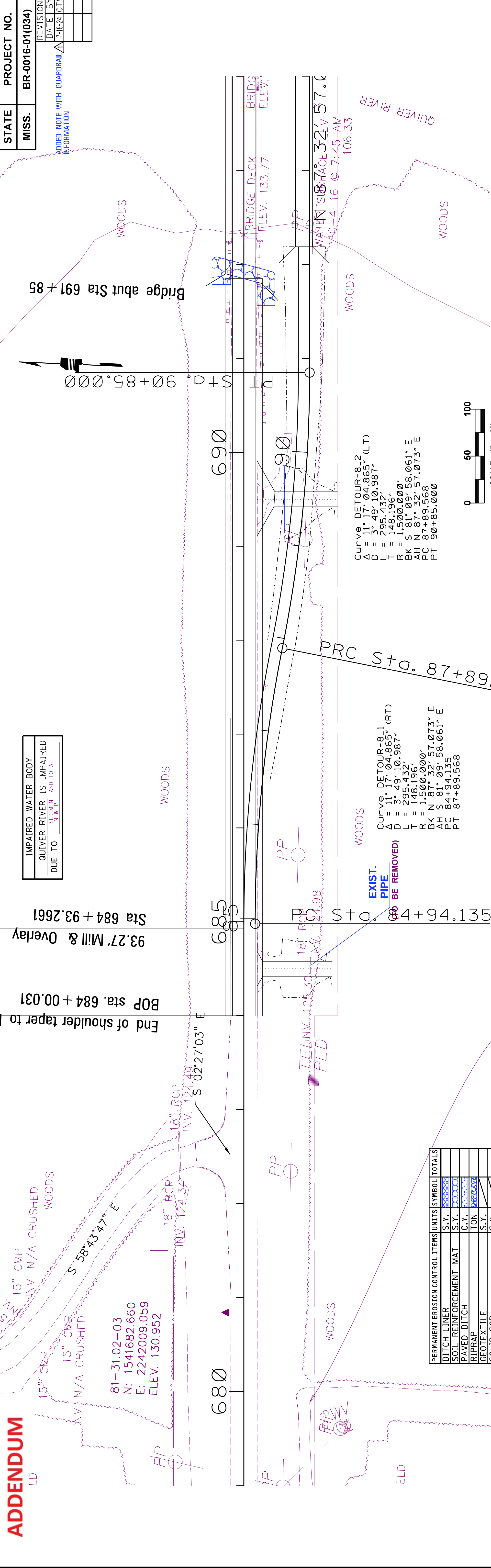
| | |
|-------|-----------------|
| STATE | PROJECT NO. |
| MISS | BR-0016-01(034) |

SUMMARY OF QUANTITIES (SHEET 2)

| PAY ITEM NO. | PAY ITEM | UNIT | SUNFLOWER : 106912-301000 | |
|---------------|--|------|---------------------------|-------|
| | | | Prelim | Final |
| 605-P002 | 4" Non-perforated Sewer Pipe for Underdrains, SDR 23.5 | LF | 10 | |
| 605-W001 | Filter Material for Combination Storm Drain and/or Underdrains, Type A, FM | CY | 4 | |
| 605-W002 | Filter Material for Combination Storm Drain and/or Underdrains, Type B, FM | CY | 54 | |
| | OR | | | |
| 605-W003 | Filter Material for Combination Storm Drain and/or Underdrains, Type C, FM | CY | 54 | |
| 606-B001 | Guard Rail, Class A, Type 1 | LF | 300 | |
| 606-D022 | Guard Rail, Bridge End Section, Type I | EA | 4 | |
| 606-E001 | Guard Rail, Terminal End Section | EA | 4 | |
| 615-A024 | Concrete Bridge End Barrier, 37.5" | LF | 40 | |
| 617-A001 | Right-of-Way Marker | EA | 8 | |
| 618-A001 | Maintenance of Traffic | LS | 1 | |
| 618-C001 | Construction and Removal of Detour Bridge | LS | 1 | |
| 618-D001 | Construction and Removal of Detour | LS | 1 | |
| 618-E001 | Detour Bridge Piling | LF | 970 | |
| 618-F001 | Detour Bridge PDA Test Pile | LS | 1 | |
| 619-A1003 | Temporary Traffic Stripe, Continuous White, Paint | LF | 6,300 | |
| 619-A4003 | Temporary Traffic Stripe, Skip Yellow, Paint | LF | 2,000 | |
| 619-A5002 | Temporary Traffic Stripe, Detail, Paint | LF | 2,000 | |
| 619-A6004 | Temporary Traffic Stripe, Legend, Paint | LF | 96 | |
| 619-C7001 | Two-Way Yellow Reflective High Performance Raised Marker | EA | 25 | |
| 619-D1001 | Standard Roadside Construction Signs, Less than 10 Square Feet | SF | 46 | |
| 619-D2001 | Standard Roadside Construction Signs, 10 Square Feet or More | SF | 263 | |
| 907-619-E3001 | Changeable Message Sign | EA | 2 | |
| 619-F3001 | Delineators, Guard Rail, White | EA | 18 | |
| 619-G4001 | Barricades, Type III, Double Faced | LF | 24 | |
| 619-G4005 | Barricades, Type III, Single Faced | LF | 48 | |
| 619-G5001 | Free Standing Plastic Drums | EA | 20 | |
| 619-G7001 | Warning Lights, Type "B" | EA | 2 | |
| 619-H2002 | Traffic Signal, Portable, Type 2 | EA | 2 | |
| 620-A001 | Mobilization | LS | 1 | |
| 626-C001 | 6" Thermoplastic Double Drop Edge Stripe, Continuous White | LF | 4,000 | |
| 626-D002 | 6" Thermoplastic Double Drop Traffic Stripe, Skip Yellow | LF | 2,000 | |
| 627-L001 | Two-Way Yellow Reflective High Performance Raised Markers | EA | 25 | ① |
| 630-A003 | Standard Roadside Signs, Sheet Aluminum, 0.125" Thickness | SF | 18 | ① |
| 630-C003 | Steel U-Section Posts, 3.0 lb/ft | LF | 36 | ② |
| 630-C005 | Square Tube Posts, 2.0 lb/ft | LF | 30 | ② |
| 630-C1001 | Square Post Inner Sleeve | LF | 6 | ② |
| 630-G005 | Type 3 Object Markers, OM-3R or OM-3L, Post Mounted | EA | 4 | ① |
| 699-A001 | Roadway Construction Stakes | LS | 1 | |

- ① SEE STANDARD SN-9 FOR DETAILS.
- ② SEE SHEET TSS-2 FOR DETAILS.

| | |
|---|-------------------------------|
| MISSISSIPPI DEPARTMENT OF TRANSPORTATION | |
| SUMMARY OF QUANTITIES | |
|  | Working Number SQ-2 |
| PROJ NO: BR-0016-01(034) COUNTY: SUNFLOWER | |
| Design Team WALDON | Checked Date 12-15-2023 |
| FILENAME: SQ-8-final-2023-12-15 | Sheet Number 10 |



ADDENDUM
LD

81-31.02-03
N: 1541682.660
E: 2242009.059
ELEV. 130.952

18" RCP
INV. 124.49
S 02°27'03" E

93.27" Mill & Overlay
Sta 684 + 93.2661

BOP sta. 684 + 00.031
End of shoulder taper to

18" RCP
INV. 124.98

51.46 + 4 + 0.135

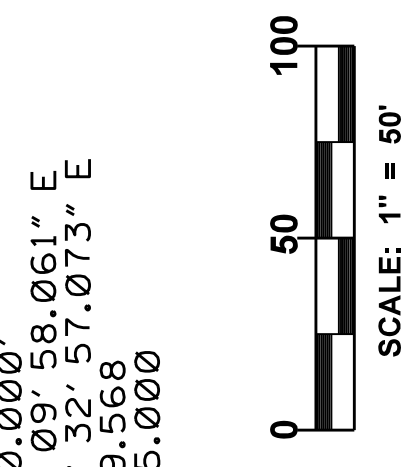
685

690

| PERMANENT EROSION CONTROL ITEMS | UNITS | SYMBOL | TOTALS |
|---------------------------------|-------|--------|--------|
| DITCH LINER | S.Y. | | |
| SOIL REINFORCEMENT MAT | S.Y. | | |
| PAVED DITCH | C.Y. | | |
| PIPE | TON | | |
| GEOTEXTILE | S.Y. | | |
| SOLID SOD | S.Y. | | |

Curve DETOUR-8.1
Δ = 11° 17' 04.865" (RT)
D = 3' 49' 10.987"
L = 295.432'
T = 148.196'
BK N 87° 32' 57.073" E
AH S 81° 09' 58.061" E
PC 84+94.135
PT 87+89.568

Curve DETOUR-8.2
Δ = 11° 17' 04.865" (LT)
D = 3' 49' 10.987"
L = 295.432'
T = 148.196'
BK S 81° 09' 58.061" E
AH N 87° 32' 57.073" E
PC 87+89.568
PT 90+85.000



STA: 89+50 RT.
16' RAMP REQ'D.
72' - 18" RCP REQ'D.
USFL = 127.00'
DSFL = 126.64'

STA: 92+19
DETOUR BRIDGE REQ'D.
SPANS: 130-90-90 FT.

STA: 92+19
50.00' GUARDRAIL REQ'D. (TEMPORARY)
(25.00' LT., 25.00' RT.)
2 - TEMP. TERMINAL END SECTIONS REQ'D.
A = 0', B = 25.00' EACH

SPECIAL RT. DITCH REQ'D.
100' @ -3.2%
STA. 90+00 FL=128.20'
STA. 91+00 FL=125.00'

ADDENDUM

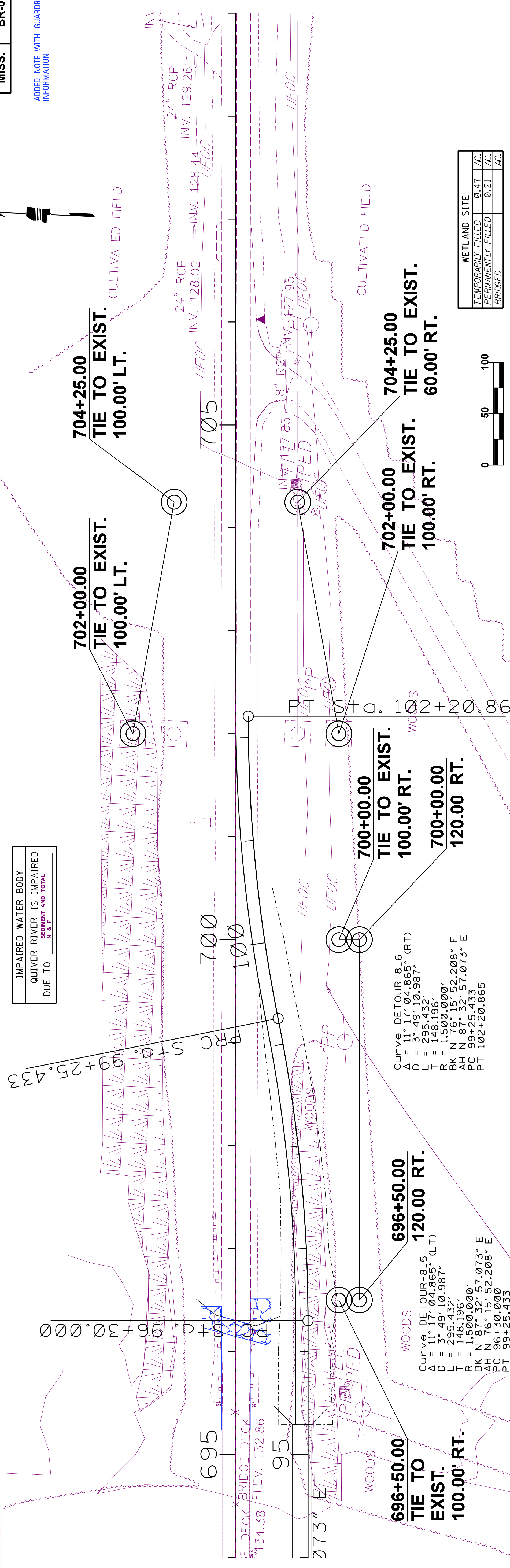
IMPAIRED WATER BODY
 QUIVER RIVER IS IMPAIRED
 DUE TO _____
 N & P
 SEGMENT AND TOTAL

| | |
|-------|-----------------|
| STATE | PROJECT NO. |
| MISS. | BR-0016-01(034) |

| | |
|-----------|-----|
| REVISIONS | |
| DATE | BY |
| 7-18-24 | GTW |

ADDED NOTE WITH GUARDRAIL INFORMATION

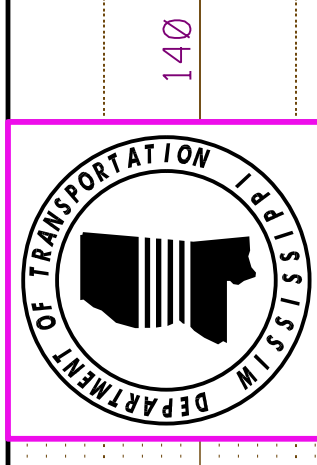
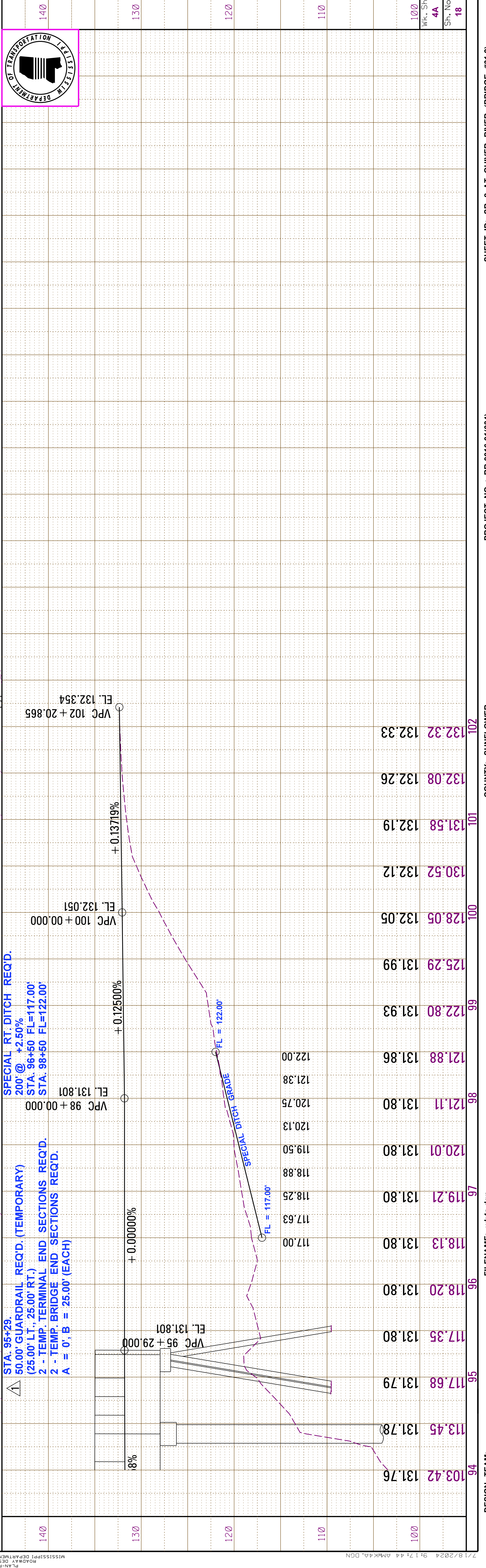
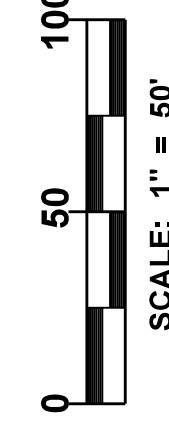
FMS CON: 106912 / 301000



Curve DETOUR-8.6
 Δ = 11° 17' 04.865" (RT)
 D = 3° 49' 10.987"
 L = 295.432'
 T = 148.196'
 BK N 76° 15' 52.208" E
 AH N 87° 32' 57.073" E
 PC 99+25.433
 PT 102+20.865

Curve DETOUR-8.5
 Δ = 11° 17' 04.865" (LT)
 D = 3° 49' 10.987"
 L = 295.432'
 R = 1.500' 0000"
 BK N 87° 32' 57.073" E
 AH N 76° 15' 52.208" E
 PC 96+30.000
 PT 99+25.433

| WETLAND SITE | |
|--------------------|----------|
| TEMPORARILY FILLED | 0.47 AC. |
| PERMANENTLY FILLED | 0.21 AC. |
| BRIDGED | |

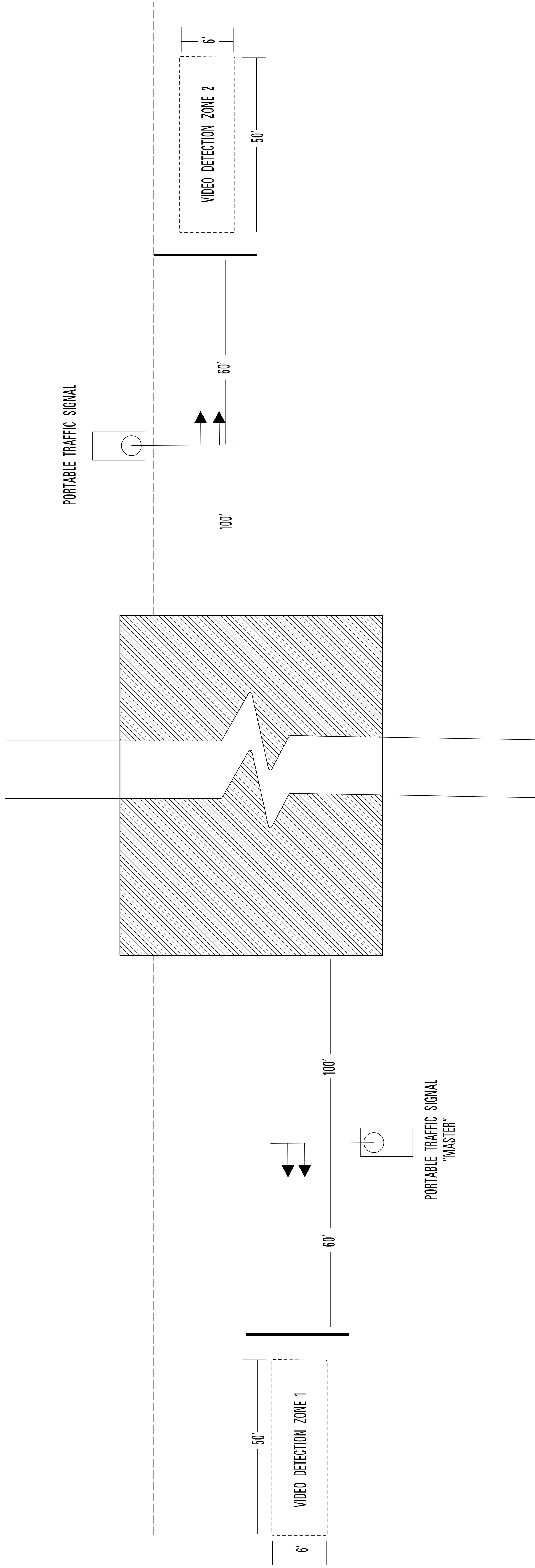


ADDENDUM

NOTE:

1. ALL TRAFFIC CONTROL DEVICES SHALL COMPLY WITH MUTCD (LATEST EDITION).
2. ALL SIGNALS AND TIMINGS SHALL BE COORDINATED THROUGH PRETIMED SIGNAL ACTUATION.
3. CONTRACTOR TO NOTIFY SIGNAL ENGINEER IN TRAFFIC ENGINEERING DIVISION TO BE PRESENT DURING PROGRAMMING. SIGNAL ENGINEER: (601) 359-1454
4. VIDEO DETECTION SHALL BE USED IN CONJUNCTION WITH PORTABLE TRAFFIC SIGNALS. ALL VIDEO EQUIPMENT SHALL BE INCLUDED UNDER PAY ITEM 619-H2002, TRAFFIC SIGNAL, PORTABLE, TYPE 2.
5. SIGNALS SHALL COMMUNICATE WITH ONE ANOTHER TO ENSURE NO CONFLICT BETWEEN THEM.
6. DRAWING DEPICTS ONLY ONE PHASE OF CONSTRUCTION, BUT IT IS APPLICABLE FOR ALL PHASES.
7. TEMPORARY PORTABLE TRAFFIC SIGNALS SHALL DISPLAY A MINIMUM OF TWO (2) SIGNAL HEADS FOR EACH APPROACH.

| | |
|-------|-----------------|
| STATE | PROJECT NO. |
| MISS. | BR-0016-01(034) |



NOT TO SCALE

WORK ZONE

| | |
|--|-------------------------------|
| MISSISSIPPI DEPARTMENT OF TRANSPORTATION | |
| PORTABLE TRAFFIC SIGNAL INSTALLATION | |
| PROJ. NO.: BR-0016-01(034) | |
| COUNTY: SUNFLOWER | |
| 7/18/24 | REVISD PROJECT NO. AND COUNTY |
| BY | REVISION |
| MISSISSIPPI DEPARTMENT OF TRANSPORTATION | |
| WORKING NUMBER | |
| TTS-1 | |
| SHEET NUMBER | |
| 25 | |