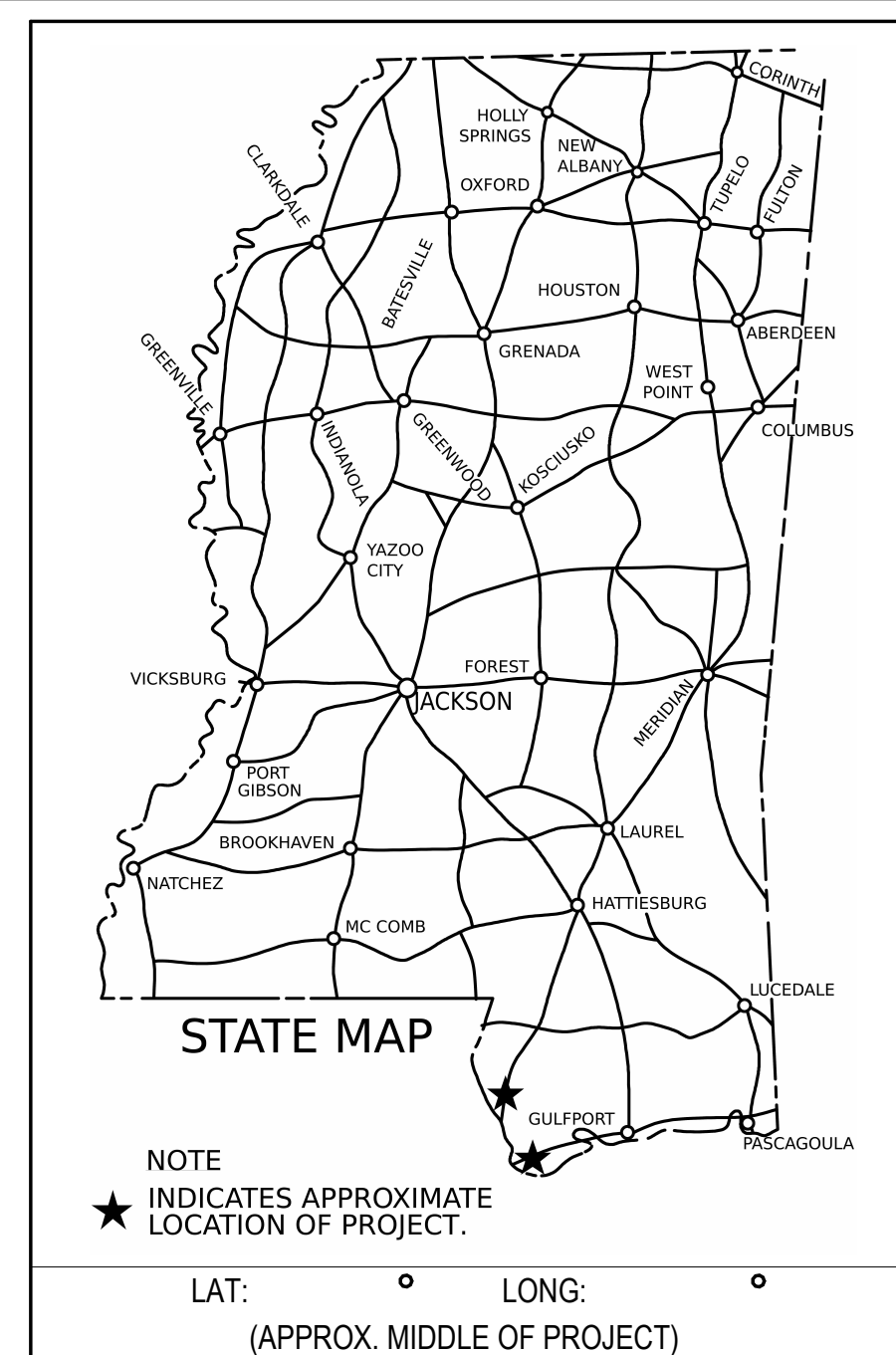


STATE OF MISSISSIPPI  
MISSISSIPPI DEPARTMENT OF TRANSPORTATION

DISTRICT SIX WELCOME CENTER  
RENOVATIONS

STATE PROJ. NO.S BWO-6070-23(003), BWO-6197-55(004)

HANCOCK & PEARL RIVER  
COUNTIES



PERMITS ACQUIRED  
BY MDOT

WETLANDS AND WATERS PERMITS

|                     | WATERS | WETLANDS |
|---------------------|--------|----------|
| NATIONWIDE #14      | N      | N        |
| NATIONWIDE (OTHER)* | N      | N        |
| GENERAL *           | N      | N        |
| INDIVIDUAL (404)*   | N      | N        |

STORMWATER PERMIT

|   |   |
|---|---|
| Y | REQUIRED. CNOI SUBMITTED BY MDOT (DISTURBED AREA=5 ACRES)       |
| S | REQUIRED. SCNOI TO BE SUBMITTED BY CONTRACTOR (1 TO 4.99 ACRES) |
| N | NO STORMWATER PERMIT REQUIRED (<1 ACRE)                         |

APPROVED BY:

CONSTRUCTION PROJECT DATA

| EXTERNAL PROJ. NO.                                 | FMS & DETAIL                                 |
|--|--|
| <b>BWO-6070-23(003)</b><br><b>BWO-6197-55(004)</b> | <b>503755/301000</b><br><b>503755/302000</b> |



ARCHITECTURAL

P S & E DATE: 8-26-2024

APPROVED:

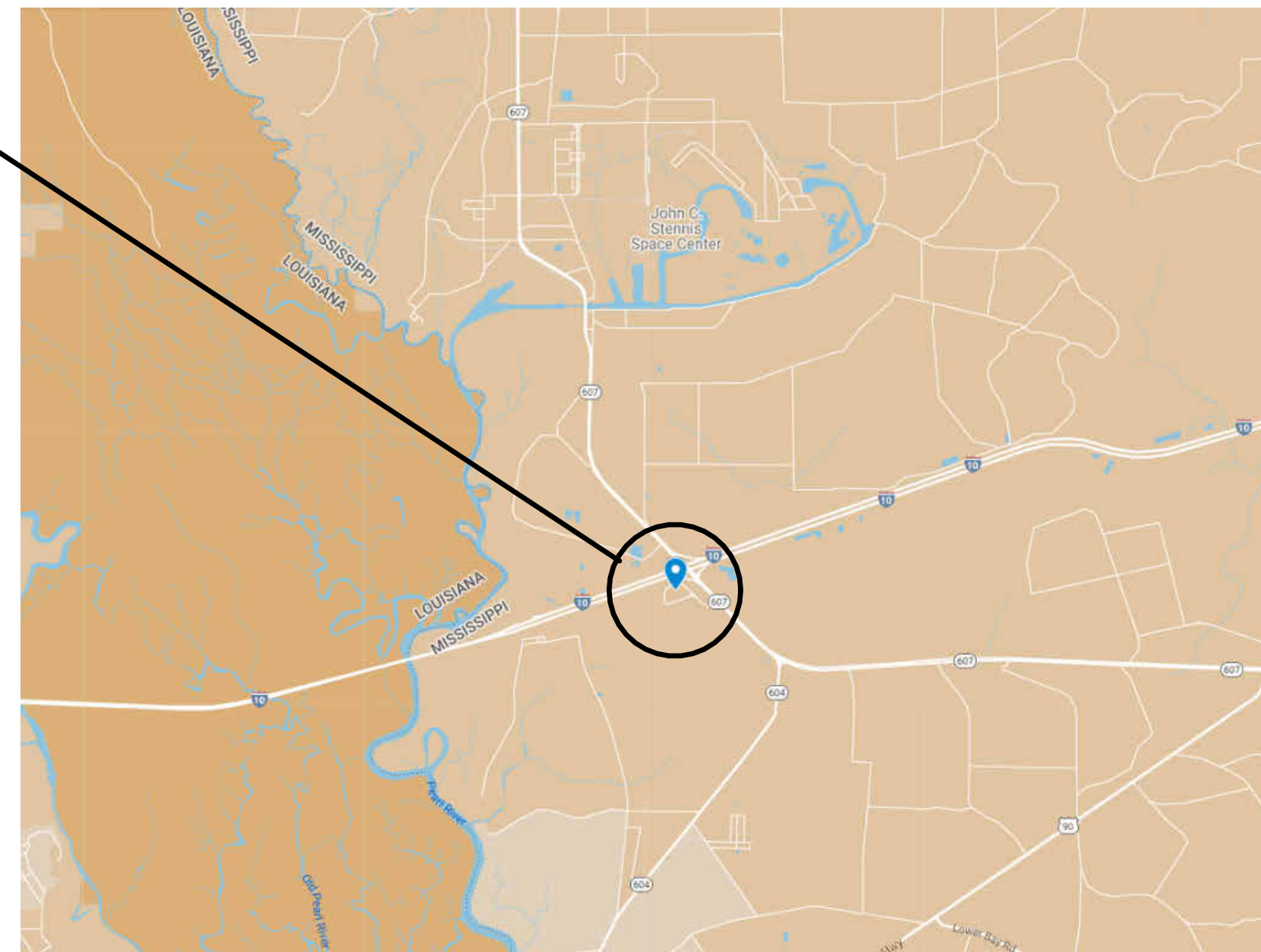
DEPUTY EXECUTIVE DIRECTOR / CHIEF ENGINEER

EXECUTIVE DIRECTOR



PROJECT LOCATION

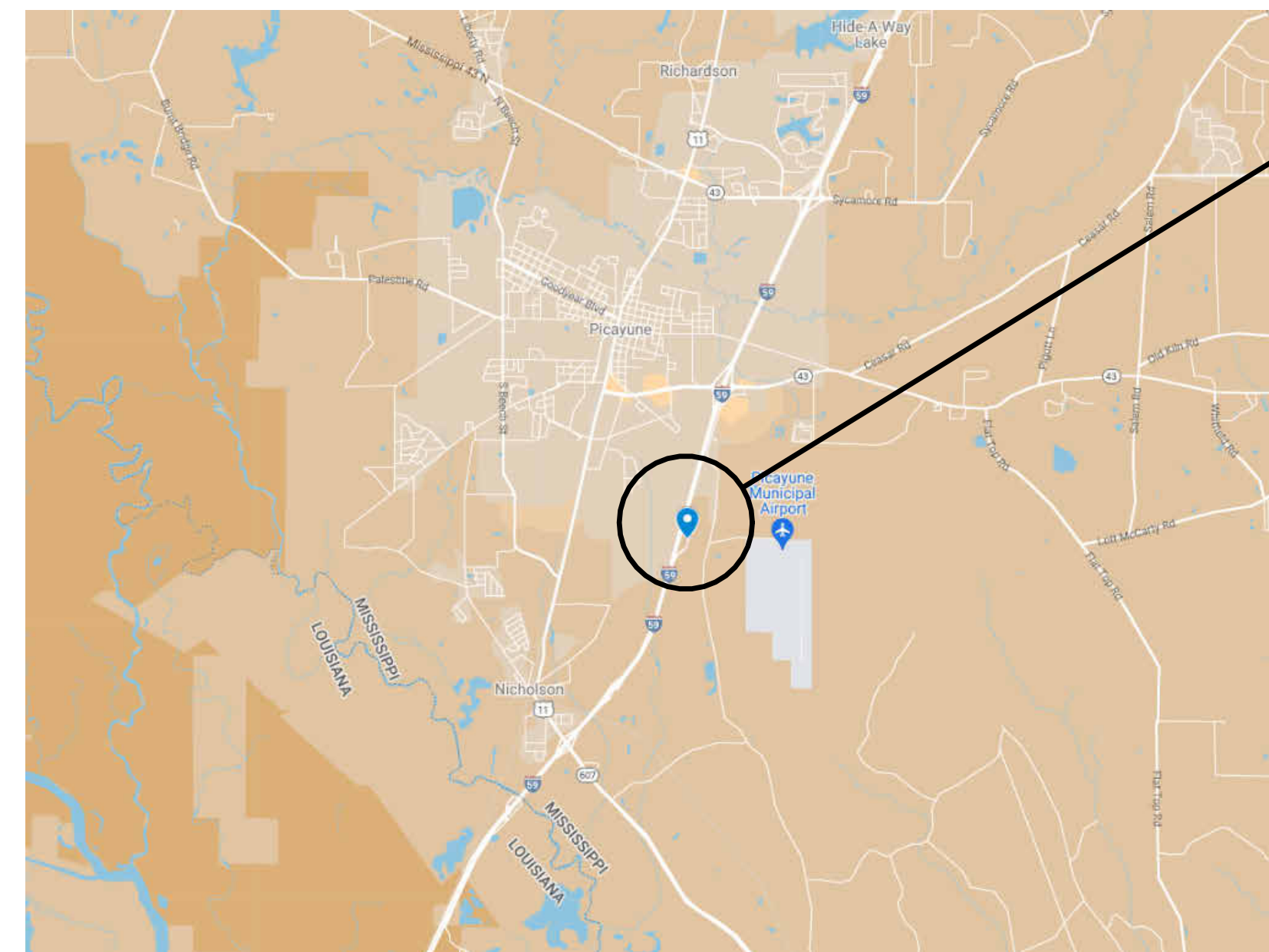
30.31293, -89.59967



HANCOCK

PROJECT LOCATION

30.49715, -89.66922



PEARL RIVER

DISTRICT SIX WELCOME CENTER  
 RENOVATIONS  
 HANCOCK, PEARL RIVER



| No. | Description | Date | Issued by |
|-----|-------------|------|-----------|
|     |             |      |           |
|     |             |      |           |
|     |             |      |           |
|     |             |      |           |
|     |             |      |           |
|     |             |      |           |
|     |             |      |           |
|     |             |      |           |
|     |             |      |           |
|     |             |      |           |

DESIGNED BY: ASU  
 DETAILLED BY: SMW  
 CHECKED BY: JRP  
 DATE: 8-26-2024

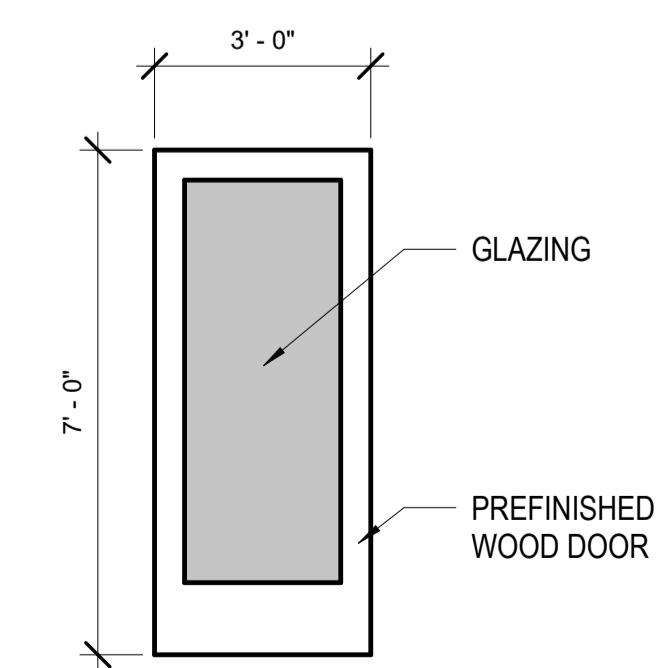
**HANCOCK CO. WELCOME CENTER BUILDING**

**HANCOCK KEYNOTES**

- 1 REMOVE DOOR AND REPLACE WITH NEW DOOR AND HARDWARE. SEE SPECIFICATION.
- 2 REMOVE CURTAIN RODS AND PATCH HOLES.
- 3 REPLACE DRINKING FOUNTAIN (OWNER FURNISHED)
- 4 REPLACE TOILET PARTITIONS (IN ALL RESTROOMS) AND URINAL SCREENS (IN MEN'S RESTROOMS). SEE SPECIFICATION.
- 5 EXISTING FIBERGLASS DOOR. REMOVE HARDWARE, CLEAN, AND REUSE. PREP AND PAINT EXISTING FIBERGLASS DOOR. SEE SPECIFICATION. REINSTALL DOOR AND HARDWARE.
- 6 REPLACE MISSING COPPER DOWNSPOUT.
- 7 REPAIR DOOR. PROVIDE NEW FLOOR MOUNTED CLOSER TO MATCH EXISTING. REPLACE DOOR HINGES/KNUCKLES TO MATCH EXISTING. REMOVE BULLETIN BOARD AND PATCH HOLES.
- 8 REMOVE BULLETIN BOARD AND PATCH HOLES.
- 9 PRESSURE WASH EXTERIOR OF BUILDING. TAKE CARE NOT TO DAMAGE SURFACES. COMPLETELY REMOVE ALL MOLD, MILDEW, AND OTHER FOREIGN SUBSTANCES.
- 10 PRESSURE WASH WELCOME CENTER SIGN. TAKE CARE NOT TO DAMAGE SURFACES.
- 11 CLEAN RESTROOM WALL AND FLOOR TILE AND GROUT. PRETREAT ALL GROUT SPOTS AND STAINS. USE CHEMICAL DISINFECTANT AND SHIELDED HIGH PRESSURE CLEANING AND EXTRACTION TO REMOVE ALL FOREIGN SUBSTANCES. THOROUGHLY DRY ALL TILE AREAS AND SEAL FLOOR TILE GROUT WITH LATICRETE STONETECH HEAVY DUTY GROUT SEALER OR APPROVED EQUAL.
- 12 PAINT INTERIOR BRICK WALLS. REFER TO COLOR DESIGN SPECIFICATION AND PAINT SPECIFICATION
- 13 PAINT ALL PREVIOUSLY PAINTED INTERIOR SURFACES ON FIRST FLOOR. PAINT ALL PREVIOUSLY PAINTED SURFACES, UP TO AND INCLUDING SPIRAL STAIRCASE LANDING. THE REMAINDER OF THE SECOND FLOOR IS EXCLUDED FROM THE LIMITS OF WORK. REFER TO COLOR DESIGN SPECIFICATION AND PAINT SPECIFICATION
- 14 PAINT ALL PREVIOUSLY PAINTED EXTERIOR SURFACES, INCLUDING EXTERIOR COLUMNS. REFER TO COLOR DESIGN SPECIFICATION AND PAINT SPECIFICATION
- 15 STRIP WAX FROM BRICK FLOORS. CLEAN AND SEAL BRICK WITH PROSOCO SURE KLEAN WEATHER SEAL SILOXANE PD OR APPROVED EQUAL. APPLY ACCORDING TO MANUFACTURER'S RECOMMENDATIONS.
- 16 CAULK WINDOWS AND RE-PUTTY MUNTINS AT GLAZING AS NEEDED BEFORE PAINTING.
- 17 INSTALL NEW LITERATURE RACKS AS DIRECTED. (OWNER FURNISHED)
- 18 INSTALL PETWAY STATIONS AS DIRECTED. (OWNER FURNISHED)
- 19 REMOVE EXISTING WALL MOUNTED TV AND MOUNT AS DIRECTED. REMOVE UNUSED SURFACE MOUNTED TV CABLES AS DIRECTED. PATCH HOLES PRIOR TO PAINTING.
- 20 ALL SALVAGE ITEMS TO BE REMOVED CAREFULLY AND RETURNED TO OWNER.

**HANCOCK ELECTRICAL NOTES**

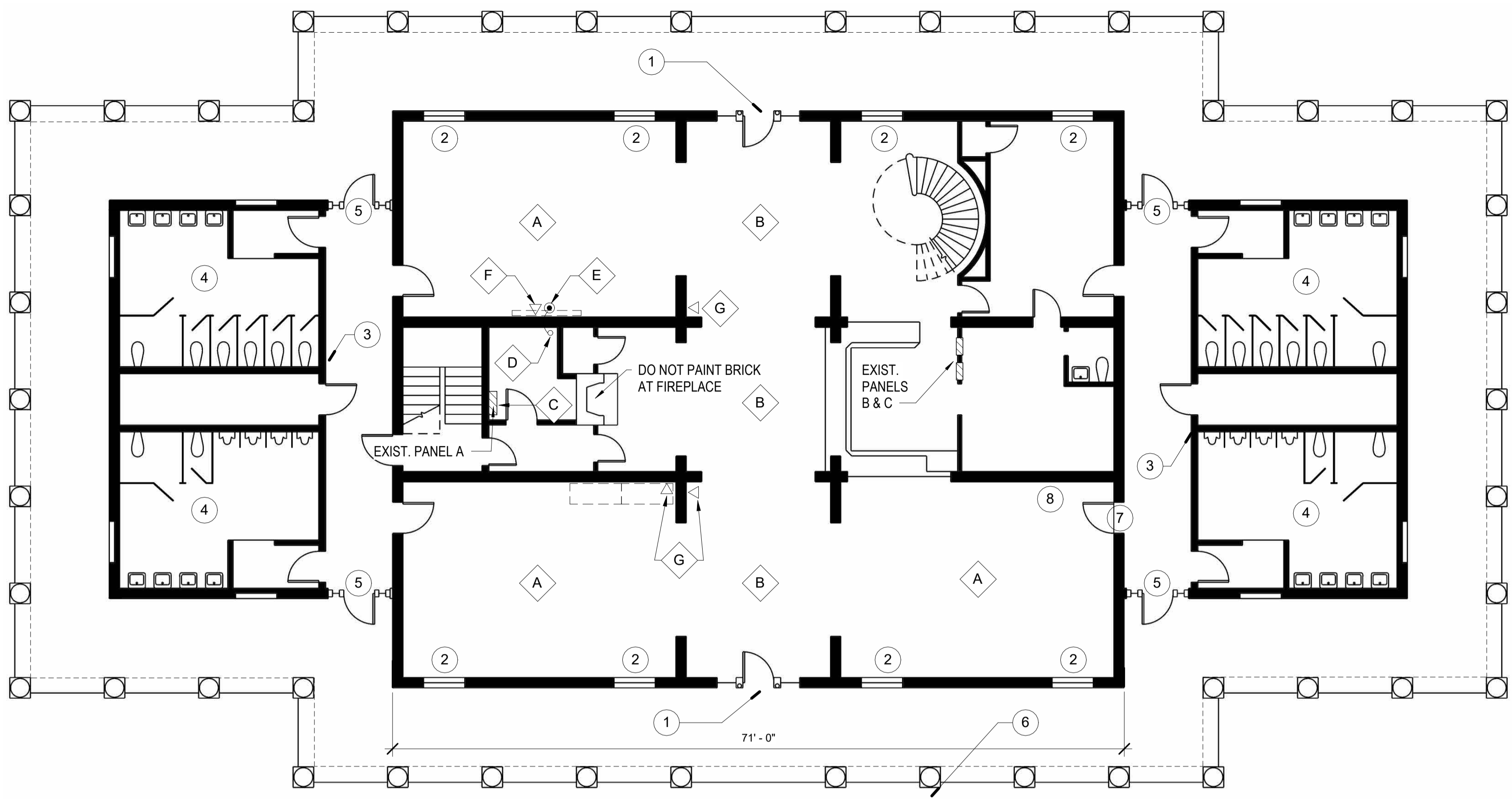
- A REPLACE CHANDELIER WITH OWNER FURNISHED 8 BULB CHANDELIER FIXTURE. PROVIDE (8) 6 WATT LED CANDELABRA BULBS. MOUNT FIXTURE 9' - 0" A.F.F.
- B REPLACE CHANDELIER WITH OWNER FURNISHED 6 BULB CHANDELIER FIXTURE. PROVIDE (6) 6 WATT LED CANDELABRA BULBS. MOUNT FIXTURE 9' - 0" A.F.F.
- C PROVIDE AND INSTALL A DEDICATED 110V-15AMP CIRCUIT FROM EXISTING PANEL (VERIFY AVAILABLE SPACE IN PANEL) TO VIDEO WALL LOCATION AS SHOWN ON PLANS (VIDEO WALL PROVIDED AND INSTALLED BY OTHERS). FLEXIBLE METAL CONDUIT ALLOWED IN CONCEALED SPACES (PROVIDE GROUND CONDUCTOR). STRAP AS PER NEC.
- D DROP POWER CIRCUIT FROM J-BOX (IN ATTIC SPACE) THRU CEILING WITH 14 GAUGE, 3-CONDUCTOR S/O CORD ON THIS SIDE OF WALL, THEN ROUTE THRU WALL AT 72" A.F.F. ROUTE IN LEAST CONSPICUOUS LOCATION POSSIBLE. STRAP CORD TO WALL AS REQUIRED.
- E TERMINATE S/O CORD ON THIS SIDE OF WALL WITH A STRAIGHT BLADE CONNECTOR, 15 AMP, 125 V, NEMA 5-15R, 2P, 3W, BLACK. PROVIDE 12" PIGTAIL FROM WALL TO END OF CORD.
- F DATA LOCATION AT 72" A.F.F. FOR VIDEO WALL. DATA CABLING PROVIDED AND INSTALLED BY OTHERS.
- G PROVIDE AND INSTALL DATA OUTLET BOX EQUAL TO WIREMOLD SURE-SNAP 400 SERIES (#2348S-51) WITH APPROPRIATE COVER PLATE AT THIS LOCATION FOR INFORMATION KIOSK (KIOSK PROVIDED BY OTHERS), AND/OR WORK DESKS (WORK DESKS PROVIDED BY OTHERS). MOUNT BOX DIRECTLY ABOVE BASE MOULDING. PROVIDE WIREMOLD SERIES 400 RACEWAY #400BAC OR EQUAL. INSTALL RACEWAY IN LEAST CONSPICUOUS LOCATION, SUCH AS IN CORNERS AND ALONG TOP OF BASE MOULDING. AVOID ROUTING ON OPEN WALLS. (DATA CABLE TO BE PROVIDED AND INSTALLED BY OTHERS.)



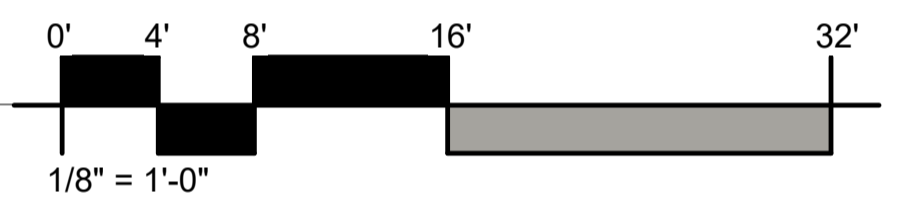
- CONDUIT DROP
- ▽ DATA OUTLET
- STRAIGHT BLADE CONNECTOR

**1 ENTRY DOOR ELEVATION**  
 3/8" = 1'-0"

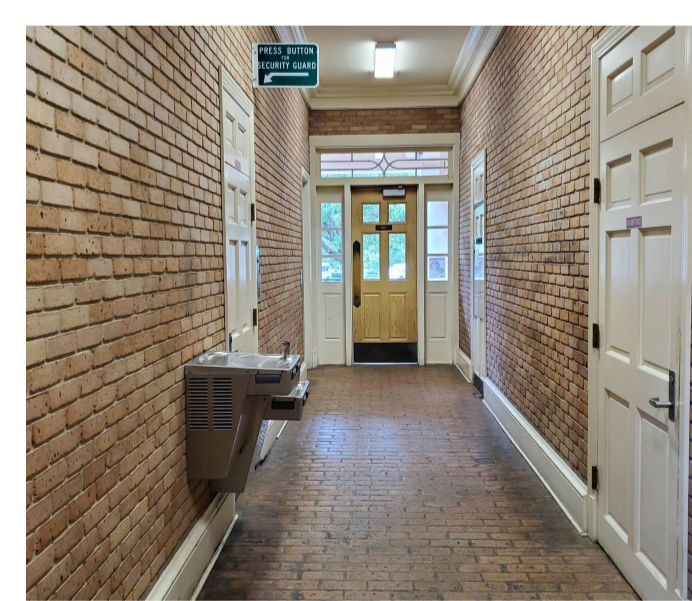
**ELEC/DATA LEGEND**  
 1/4" = 1'-0"



**HANCOCK WELCOME CENTER FLOOR PLAN**  
 1/8" = 1'-0"



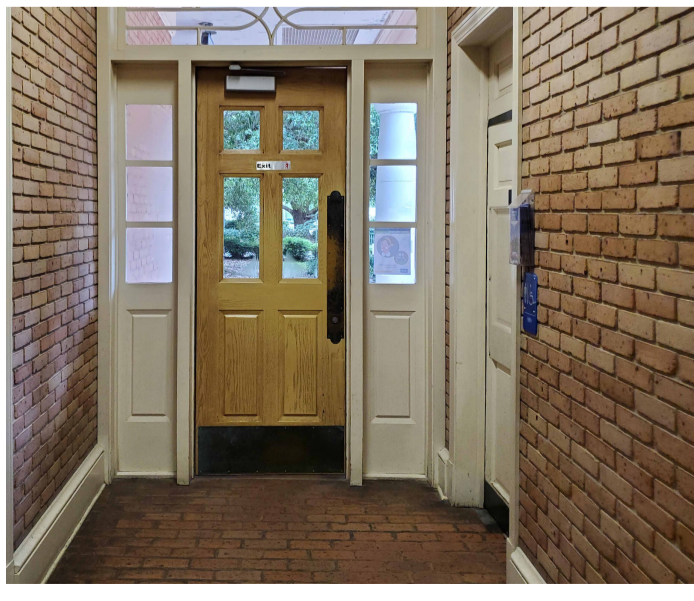
1



3



4



5



6



14



B



| No. | Description | Date | Issued by |
|-----|-------------|------|-----------|
|     |             |      |           |
|     |             |      |           |
|     |             |      |           |
|     |             |      |           |
|     |             |      |           |
|     |             |      |           |
|     |             |      |           |
|     |             |      |           |
|     |             |      |           |
|     |             |      |           |

DESIGNED BY: ASU  
 DETAILED BY: SMW  
 CHECKED BY: JRP  
 DATE: 8-26-2024

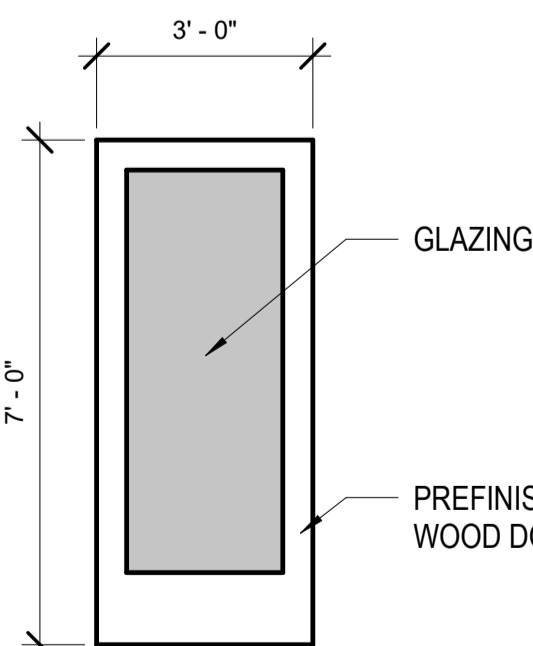
PEARL RIVER CO. WELCOME CENTER BUILDING

**PEARL RIVER NOTES**

- 1 REMOVE DOOR AND REPLACE WITH NEW DOOR AND HARDWARE. SEE SPECIFICATION.
- 2 REMOVE CURTAIN RODS AND PATCH HOLES.
- 3 REPLACE DRINKING FOUNTAIN (OWNER FURNISHED). REMOVE SOLID SURFACE BACKSPLASH. PATCH AND REPAIR BRICK AS REQUIRED PRIOR TO PAINTING.
- 4 EXISTING FIBERGLASS DOOR. REMOVE HARDWARE, CLEAN, AND REUSE. PREP AND PAINT EXISTING FIBERGLASS DOOR. SEE SPECIFICATION. REINSTALL DOOR AND HARDWARE.
- 5 REMOVE BULLETIN BOARD AND PATCH HOLES.
- 6 PRESSURE WASH EXTERIOR OF BUILDING. TAKE CARE NOT TO DAMAGE SURFACES. COMPLETELY REMOVE ALL MOLD, MILDEW, AND OTHER FOREIGN SUBSTANCES.
- 7 PAINT ALL PREVIOUSLY PAINTED SURFACES (INTERIOR AND EXTERIOR). REFER TO COLOR DESIGN SPECIFICATION AND PAINT SPECIFICATION
- 8 CAULK WINDOWS AND RE-PUTTY MUNTINS AT GLAZING AS NEEDED.
- 9 CLEAN RESTROOM WALL AND FLOOR TILE AND GROUT. PRETREAT ALL GROUT SPOTS AND STAINS. USE CHEMICAL DISINFECTANT AND SHIELDED HIGH PRESSURE CLEANING AND EXTRACTION TO REMOVE ALL FOREIGN SUBSTANCES. THOROUGHLY DRY ALL TILE AREAS AND SEAL FLOOR TILE GROUT WITH LATICRETE STONETECH HEAVY DUTY GROUT SEALER OR APPROVED EQUAL.
- 10 PAINT INTERIOR BRICK WALLS. REFER TO COLOR DESIGN SPECIFICATION AND PAINT SPECIFICATION
- 11 STRIP WAX FROM BRICK FLOORS. CLEAN AND SEAL BRICK WITH PROSOCO SURE KLEAN WEATHER SEAL SILOXANE PD OR APPROVED EQUAL. APPLY ACCORDING TO MANUFACTURER'S RECOMMENDATIONS.
- 12 CLEAN AND PAINT PICNIC PAVILIONS.
- 13 INSTALL NEW LITERATURE RACKS AS DIRECTED. (OWNER FURNISHED)
- 14 INSTALL PETWAY STATIONS AS DIRECTED. (OWNER FURNISHED)
- 15 REMOVE EXISTING WALL MOUNTED TV AND MOUNT AS DIRECTED. REMOVE UNUSED SURFACE MOUNTED TV CABLES AS DIRECTED. PATCH HOLES PRIOR TO PAINTING.
- 16 CHECK FOUNTAIN FOR LEAKS AND PATCH AS REQUIRED. REPLACE FOUNTAIN PUMP. MAKE FOUNTAIN OPERATIONAL. CLEAN FOUNTAIN OF ALL EFFLORESCENCE AND SEAL.
- 17 ALL SALVAGE ITEMS TO BE REMOVED CAREFULLY AND RETURNED TO OWNER.

**PEARL RIVER ELECTRICAL NOTES**

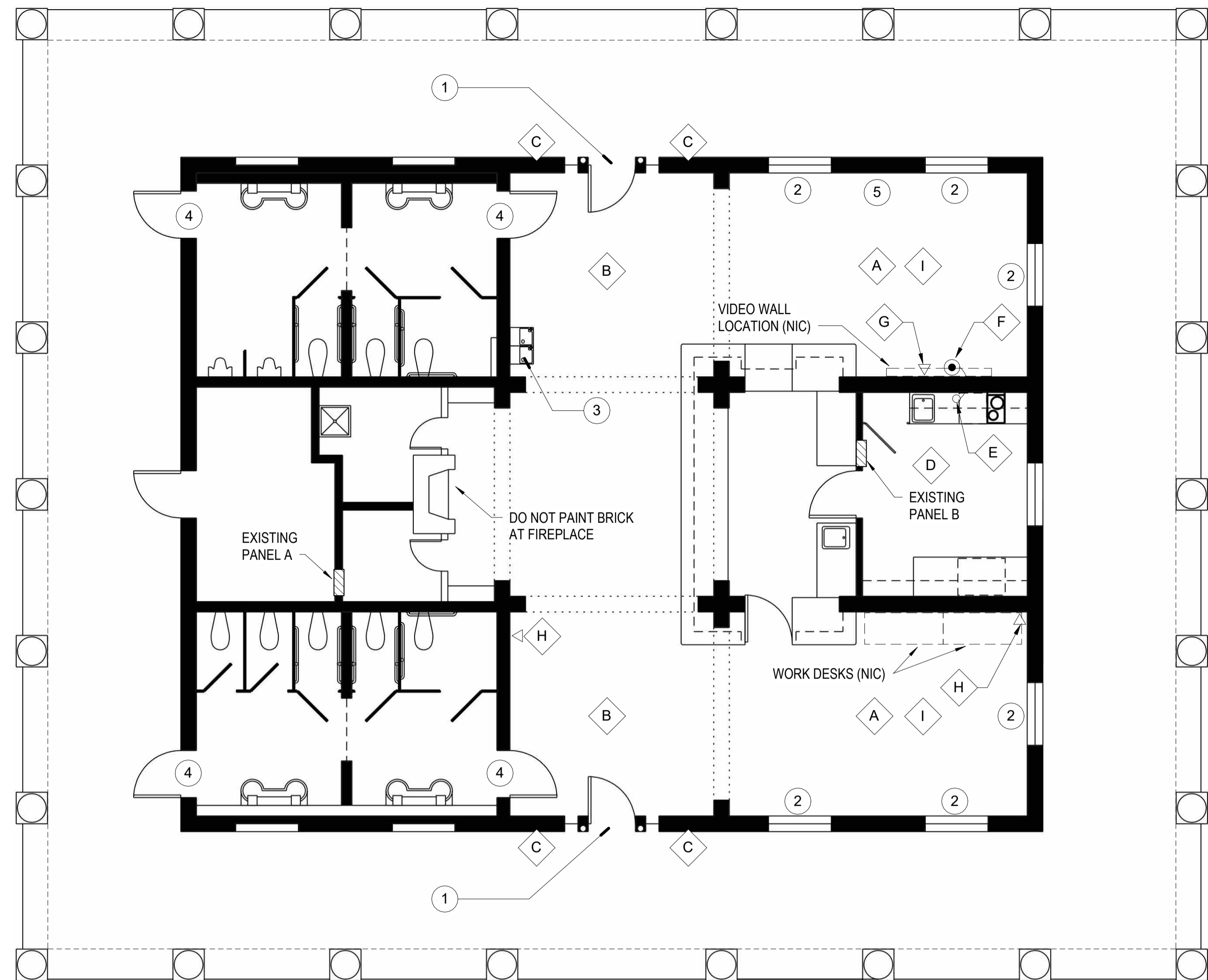
- A REPLACE CHANDELIER WITH OWNER FURNISHED 8 BULB CHANDELIER FIXTURE. PROVIDE (8) 6 WATT LED CANDELABRA BULBS. MOUNT FIXTURE 9' - 0" A.F.F.
- B REPLACE CHANDELIER WITH OWNER FURNISHED 6 BULB CHANDELIER FIXTURE. PROVIDE (6) 6 WATT LED CANDELABRA BULBS. MOUNT FIXTURE 9' - 0" A.F.F.
- C REPLACE EXISTING EXTERIOR WALL SCONZE WITH FOREVER BRIGHT, MODEL CORAL GABLE, BY SPJ LIGHTING OR APPROVED EQUAL.
- D PROVIDE AND INSTALL A DEDICATED 110V-15AMP CIRCUIT FROM EXISTING PANEL (VERIFY AVAILABLE SPACE IN PANEL) TO VIDEO WALL LOCATION AS SHOWN ON PLANS (VIDEO WALL PROVIDED AND INSTALLED BY OTHERS). FLEXIBLE METAL CONDUIT ALLOWED IN CONCEALED SPACES (PROVIDE GROUND CONDUCTOR). STRAP AS PER NEC.
- E DROP POWER CIRCUIT FROM J-BOX (IN ATTIC SPACE) THRU CEILING WITH 14 GAUGE, 3-CONDUCTOR S/O CORD ON THIS SIDE OF WALL, THEN ROUTE THRU WALL AT 72" A.F.F. ROUTE IN LEAST CONSPICUOUS LOCATION POSSIBLE. STRAP CORD TO WALL AS REQUIRED.
- F TERMINATE S/O CORD ON THIS SIDE OF WALL WITH A STRAIGHT BLADE CONNECTOR, 15 AMP, 125 V, NEMA 5-15R, 2P, 3W, BLACK. PROVIDE 12" PIGTAIL FROM WALL TO END OF CORD.
- G DATA LOCATION AT 72" A.F.F. FOR VIDEO WALL. DATA CABLING PROVIDED AND INSTALLED BY OTHERS.
- H PROVIDE AND INSTALL DATA OUTLET BOX EQUAL TO WIREMOLD SURE-SNAP 400 SERIES (#2348S-51) WITH APPROPRIATE COVER PLATE AT THIS LOCATION FOR INFORMATION KIOSK (KIOSK PROVIDED BY OTHERS), AND/OR WORK DESKS (WORK DESKS PROVIDED BY OTHERS). MOUNT BOX DIRECTLY ABOVE BASE MOULDING. PROVIDE WIREMOLD SERIES 400 RACEWAY #400BAC OR EQUAL. INSTALL RACEWAY IN LEAST CONSPICUOUS LOCATION, SUCH AS IN CORNERS AND ALONG TOP OF BASE MOULDING. AVOID ROUTING ON OPEN WALLS. (DATA CABLE TO BE PROVIDED AND INSTALLED BY OTHERS.)
- I REMOVE EXISTING TRACK LIGHTING AND PROVIDE BOX COVER AS REQUIRED (PAINT TO MATCH CEILING). PATCH CEILING PRIOR TO PAINTING.



- CONDUIT DROP
- ▽ DATA OUTLET
- STRAIGHT BLADE CONNECTOR

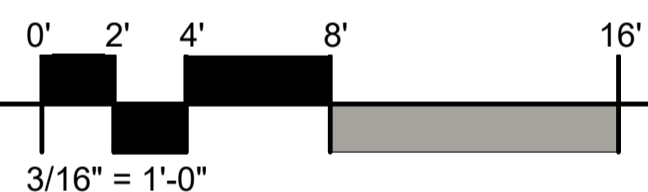
**1 ENTRY DOOR ELEVATION**  
 3/8" = 1'-0"

**ELEC/DATA LEGEND**  
 1/4" = 1'-0"



**2 PEARL RIVER WELCOME CENTER FLOOR PLAN**

3/16" = 1'-0"



1



2



3



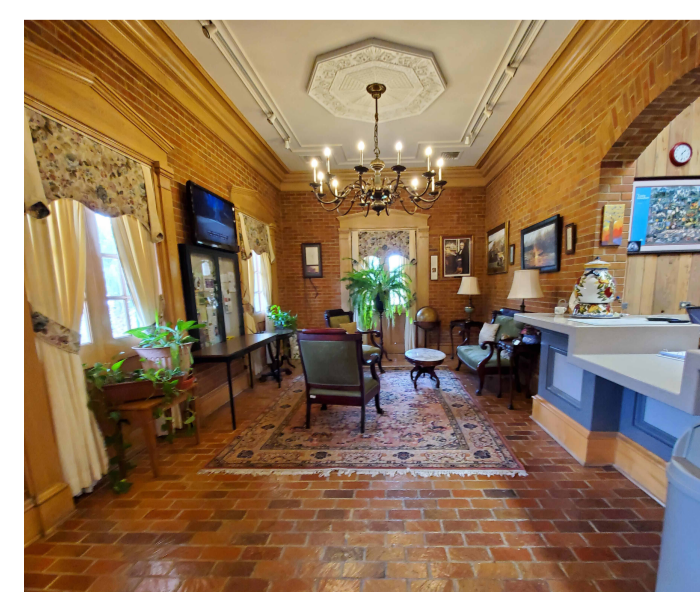
5



5



16



A

I