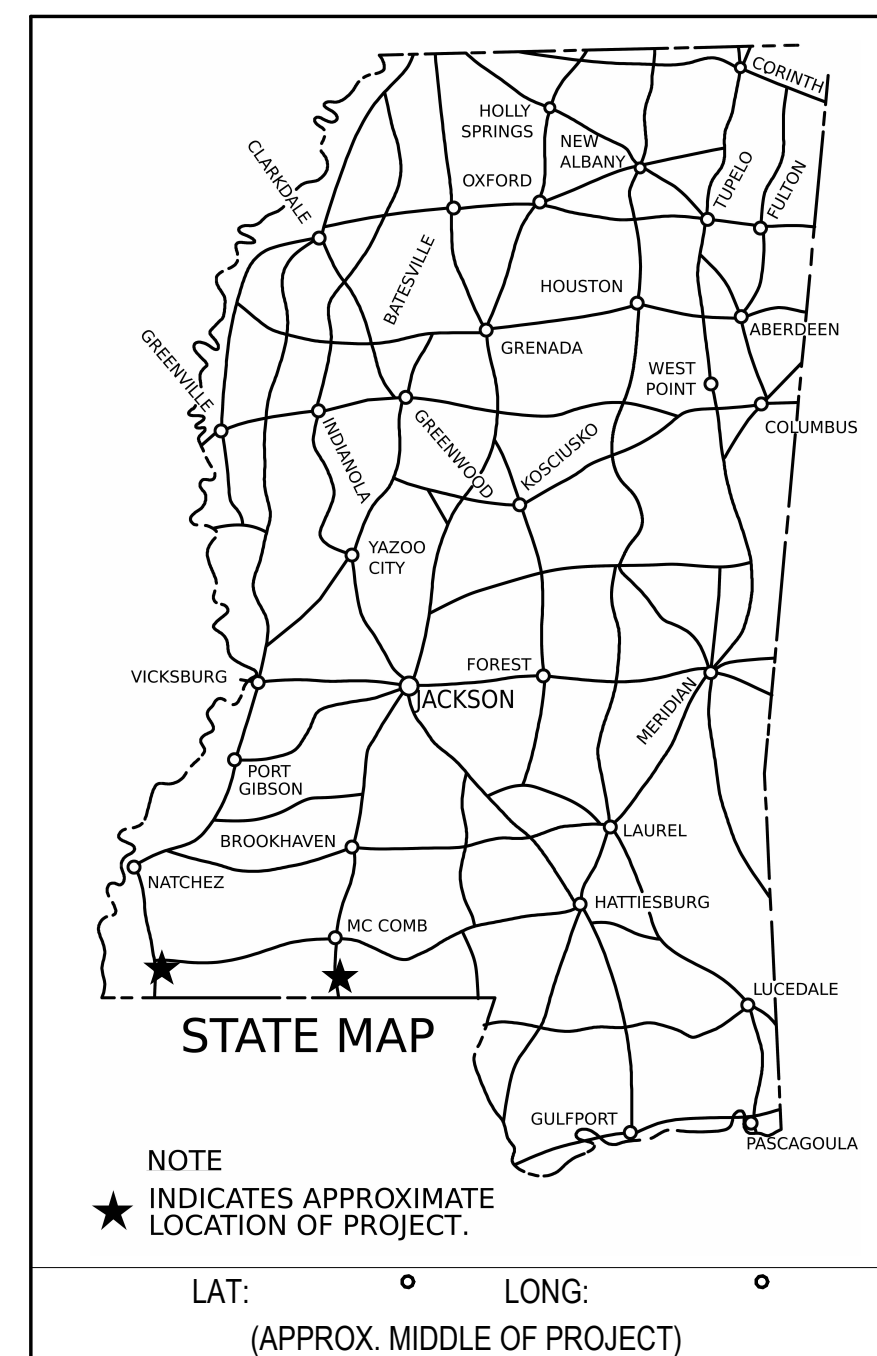


**STATE OF MISSISSIPPI
MISSISSIPPI DEPARTMENT OF TRANSPORTATION**

**DISTRICT SEVEN WELCOME
CENTER RENOVATIONS**

STATE PROJ. NO.S BWO-7124-57(003), BWO-7135-79(003)

**PIKE & WILKINSON
COUNTIES**



**PERMITS ACQUIRED
BY MDOT**

WETLANDS AND WATERS PERMITS		
	WATERS	WETLANDS
NATIONWIDE #14	N	N
NATIONWIDE (OTHER)*	N	N
GENERAL *	N	N
INDIVIDUAL (404)*	N	N
STORMWATER PERMIT		N
Y	REQUIRED. CNOI SUBMITTED BY MDOT (DISTURBED AREA=5 ACRES)	
S	REQUIRED. SCNOI TO BE SUBMITTED BY CONTRACTOR (1 TO 4.99 ACRES)	
N	NO STORMWATER PERMIT REQUIRED (<1 ACRE)	
APPROVED BY:		

CONSTRUCTION PROJECT DATA

EXTERNAL PROJ. NO.	FMS & DETAIL
BWO-7124-57(003) BWO-7135-79(003)	503755/303000 503755/304000



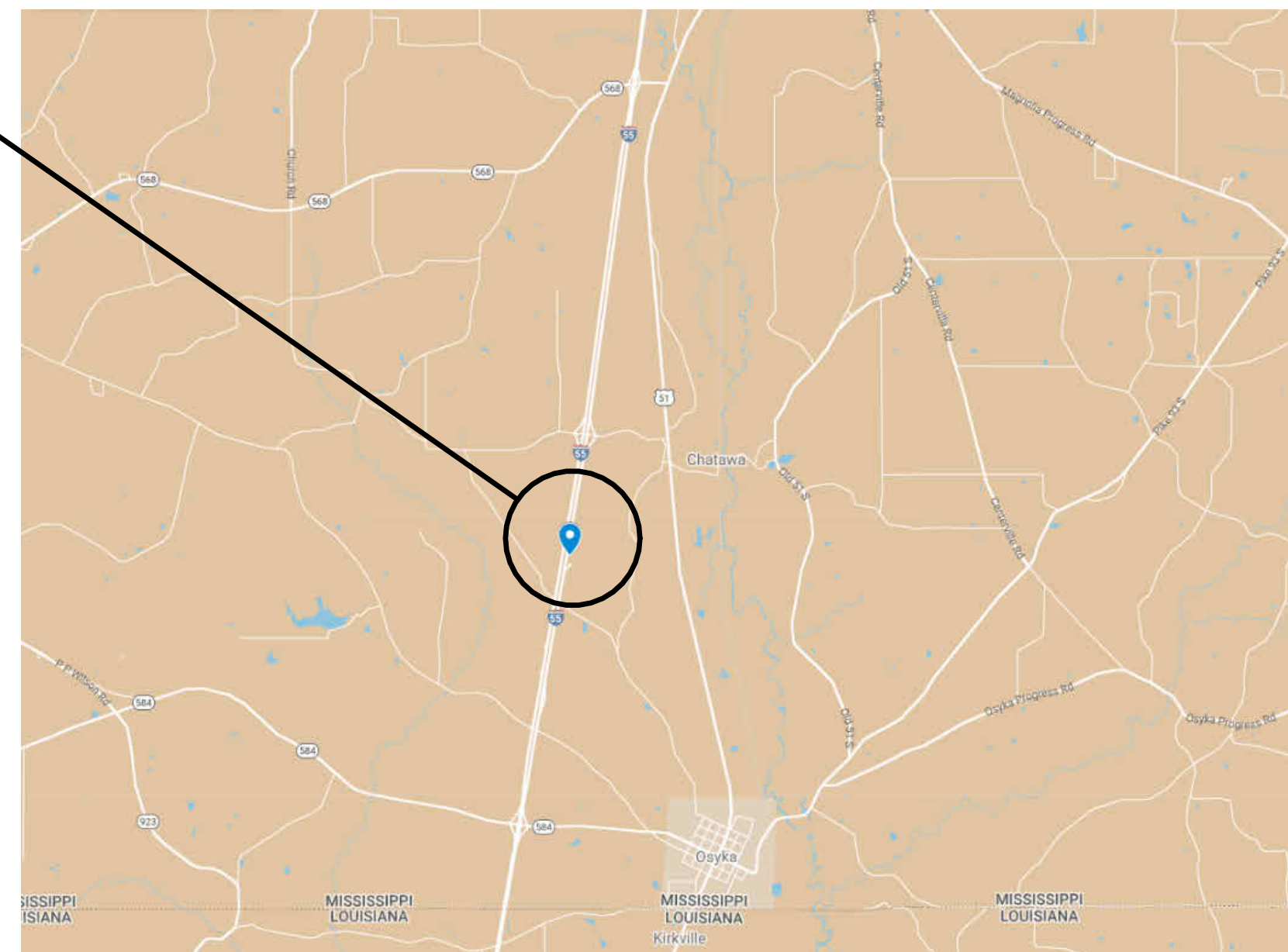
ARCHITECTURAL

P S & E DATE: 8-26-2024
APPROVED:
DEPUTY EXECUTIVE DIRECTOR / CHIEF ENGINEER
EXECUTIVE DIRECTOR



PROJECT LOCATION

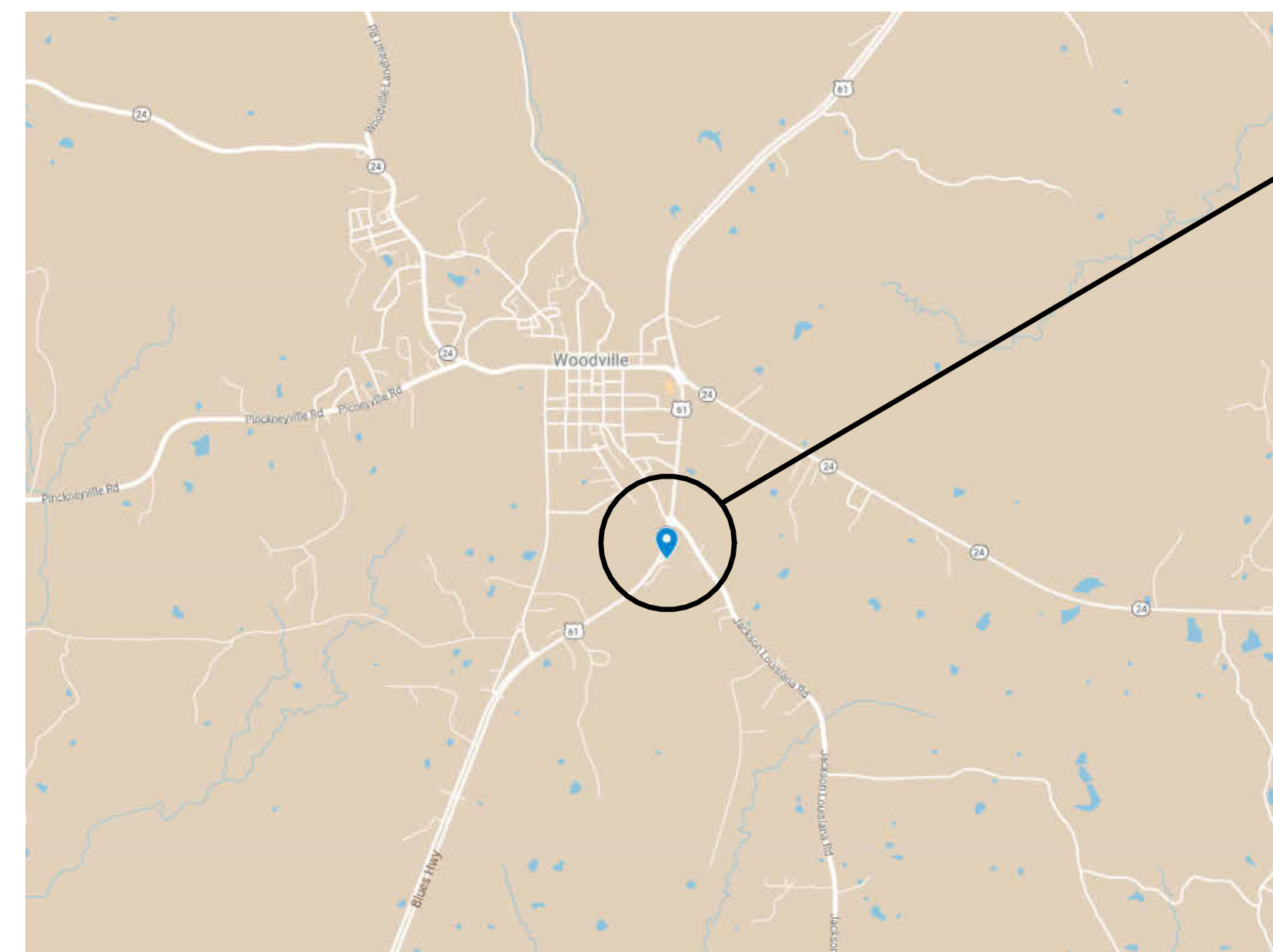
31.04746, -90.49552



PIKE

PROJECT LOCATION

31.09114, -91.29363



WILKINSON

DISTRICT SEVEN WELCOME CENTER RENOVATIONS

PIKE, WILKINSON



No.	Description	Date	Issued by

DESIGNED BY: ASU
 DETAILED BY: SMW
 CHECKED BY: JRP
 DATE: 8-26-2024

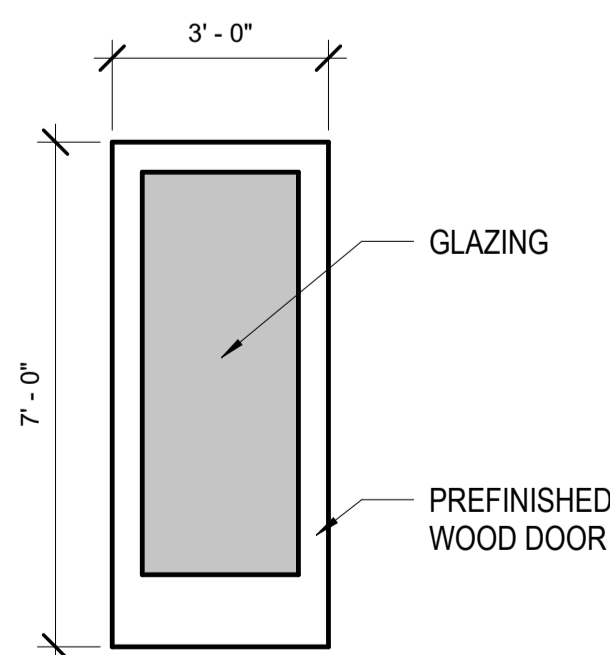
PIKE CO. WELCOME CENTER BUILDING

PIKE NOTES

- 1 REMOVE DOOR AND REPLACE WITH NEW DOOR AND HARDWARE. SEE SPECIFICATION.
- 2 REMOVE CURTAIN RODS AND PATCH HOLES.
- 3 REPLACE DRINKING FOUNTAIN (OWNER FURNISHED). REMOVE SOLID SURFACE BACKSPASH. PATCH AND REPAIR BRICK AS REQUIRED PRIOR TO PAINTING.
- 4 EXISTING FIBERGLASS DOOR. REMOVE HARDWARE, CLEAN, AND REUSE. PREP AND PAINT EXISTING FIBERGLASS DOOR. SEE SPECIFICATION. REINSTALL DOOR AND HARDWARE.
- 5 REMOVE BULLETIN BOARD AND PATCH HOLES.
- 6 PRESSURE WASH EXTERIOR OF BUILDING. TAKE CARE NOT TO DAMAGE SURFACES. COMPLETELY REMOVE ALL MOLD, MILDEW, AND OTHER FOREIGN SUBSTANCES.
- 7 PAINT ALL PREVIOUSLY PAINTED SURFACES (INTERIOR AND EXTERIOR). REFER TO COLOR DESIGN SPECIFICATION AND PAINT SPECIFICATION
- 8 CAULK WINDOWS AND RE-PUTTY MUNTINS AT GLAZING AS NEEDED.
- 9 CLEAN RESTROOM WALL AND FLOOR TILE AND GROUT. PRETREAT ALL GROUT SPOTS AND STAINS. USE CHEMICAL DISINFECTANT AND SHIELDED HIGH PRESSURE CLEANING AND EXTRACTION TO REMOVE ALL FOREIGN SUBSTANCES. THOROUGHLY DRY ALL TILE AREAS AND SEAL FLOOR TILE GROUT WITH LATICRETE STONETECH HEAVY DUTY GROUT SEALER OR APPROVED EQUAL.
- 10 PAINT INTERIOR BRICK WALLS. REFER TO COLOR DESIGN SPECIFICATION AND PAINT SPECIFICATION
- 11 STRIP WAX FROM BRICK FLOORS. CLEAN AND SEAL BRICK WITH PROSOCO SURE KLEAN WEATHER SEAL SILOXANE PD OR APPROVED EQUAL. APPLY ACCORDING TO MANUFACTURER'S RECOMMENDATIONS.
- 12 CLEAN AND PAINT PICNIC PAVILIONS.
- 13 INSTALL NEW LITERATURE RACKS AS DIRECTED. (OWNER FURNISHED)
- 14 INSTALL PETWAY STATIONS AS DIRECTED. (OWNER FURNISHED)
- 15 REMOVE EXISTING WALL MOUNTED TV AND MOUNT AS DIRECTED. REMOVE UNUSED SURFACE MOUNTED TV CABLES AS DIRECTED. PATCH HOLES PRIOR TO PAINTING.
- 16 ALL SALVAGE ITEMS TO BE REMOVED CAREFULLY AND RETURNED TO OWNER.

PIKE ELECTRICAL NOTES

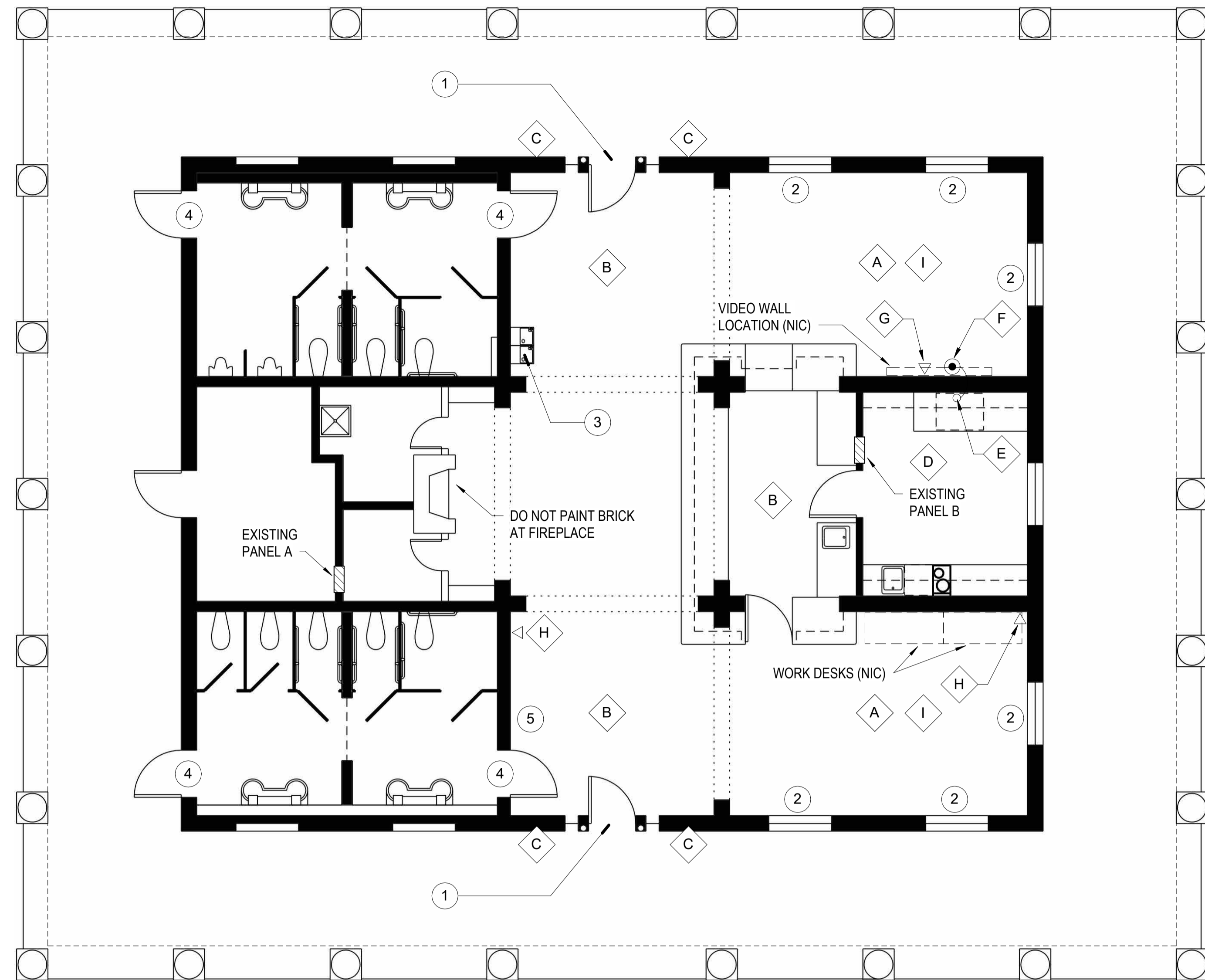
- A REPLACE CHANDELIER WITH OWNER FURNISHED 8 BULB CHANDELIER FIXTURE. PROVIDE (8) 6 WATT LED CANDELABRA BULBS. MOUNT FIXTURE 9' - 0" A.F.F.
- B REPLACE CHANDELIER WITH OWNER FURNISHED 6 BULB CHANDELIER FIXTURE. PROVIDE (6) 6 WATT LED CANDELABRA BULBS. MOUNT FIXTURE 9' - 0" A.F.F.
- C REPLACE EXISTING EXTERIOR WALL SCONZE WITH FOREVER BRIGHT, MODEL CORAL GABLE, BY SPJ LIGHTING OR APPROVED EQUAL.
- D PROVIDE AND INSTALL A DEDICATED 110V-15AMP CIRCUIT FROM EXISTING PANEL (VERIFY AVAILABLE SPACE IN PANEL) TO VIDEO WALL LOCATION AS SHOWN ON PLANS (VIDEO WALL PROVIDED AND INSTALLED BY OTHERS). FLEXIBLE METAL CONDUIT ALLOWED IN CONCEALED SPACES (PROVIDE GROUND CONDUCTOR). STRAP AS PER NEC.
- E DROP POWER CIRCUIT FROM J-BOX (IN ATTIC SPACE) THRU CEILING WITH 14 GAUGE, 3-CONDUCTOR S/O CORD ON THIS SIDE OF WALL, THEN ROUTE THRU WALL AT 72" A.F.F. ROUTE IN LEAST CONSPICUOUS LOCATION POSSIBLE. STRAP CORD TO WALL AS REQUIRED.
- F TERMINATE S/O CORD ON THIS SIDE OF WALL WITH A STRAIGHT BLADE CONNECTOR. 15 AMP, 125 V, NEMA 5-15R, 2P, 3W, BLACK. PROVIDE 12" PIGTAIL FROM WALL TO END OF CORD.
- G DATA LOCATION AT 72" A.F.F. FOR VIDEO WALL. DATA CABLING PROVIDED AND INSTALLED BY OTHERS.
- H PROVIDE AND INSTALL DATA OUTLET BOX EQUAL TO WIREMOLD SURE-SNAP 400 SERIES (#2348S-51) WITH APPROPRIATE COVER PLATE AT THIS LOCATION FOR INFORMATION KIOSK (KIOSK PROVIDED BY OTHERS), AND/OR WORK DESKS (WORK DESKS PROVIDED BY OTHERS). MOUNT BOX DIRECTLY ABOVE BASE MOULDING. PROVIDE WIREMOLD SERIES 400 RACEWAY #400BAC OR EQUAL. INSTALL RACEWAY IN LEAST CONSPICUOUS LOCATION, SUCH AS IN CORNERS AND ALONG TOP OF BASE MOULDING. AVOID ROUTING ON OPEN WALLS. (DATA CABLE TO BE PROVIDED AND INSTALLED BY OTHERS.)
- I REMOVE EXISTING TRACK LIGHTING AND PROVIDE BOX COVER AS REQUIRED (PAINT TO MATCH CEILING). PATCH CEILING PRIOR TO PAINTING.



1 ENTRY DOOR ELEVATION
 3/8" = 1'-0"

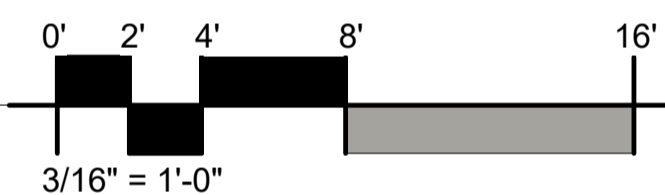
ELEC/DATA LEGEND
 1/4" = 1'-0"

- CONDUIT DROP
- ▽ DATA OUTLET
- STRAIGHT BLADE CONNECTOR



PIKE WELCOME CENTER FLOOR PLAN

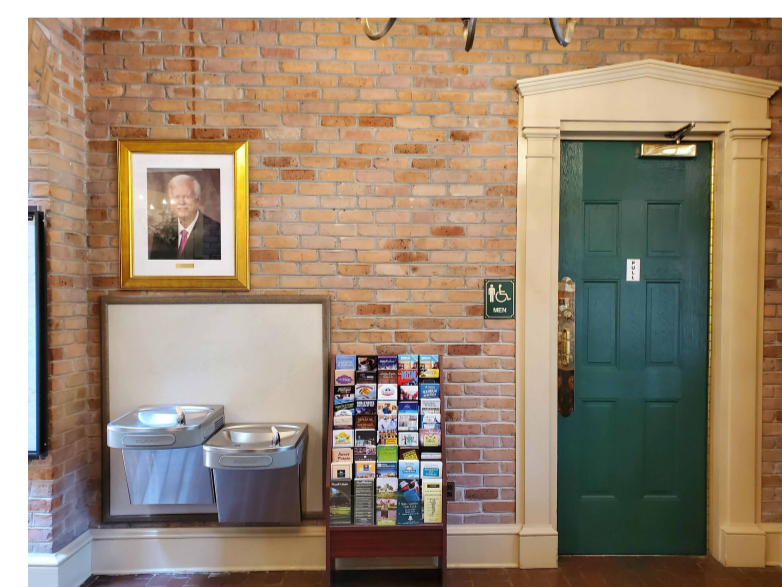
3/16" = 1'-0"



1



2



3



5



12



13



No.	Description	Date	Issued by

DESIGNED BY: ASU
 DETAILED BY: SMW
 CHECKED BY: JRP
 DATE: 8-26-2024

WILKINSON CO. WELCOME CENTER BUILDING

WILKINSON NOTES

- 1 STRIP, SAND, STAIN AND RESEAL DOOR TO MATCH EXISTING.
- 2 REMOVE CURTAIN RODS AND PATCH HOLES.
- 3 EXISTING FIBERGLASS DOOR. REMOVE HARDWARE, CLEAN, AND REUSE. PREP AND PAINT EXISTING FIBERGLASS DOOR. SEE SPECIFICATION. REINSTALL DOOR AND HARDWARE.
- 6 PRESSURE WASH WELCOME CENTER SIGN. TAKE CARE NOT TO DAMAGE SURFACES.
- 7 PRESSURE WASH EXTERIOR OF BUILDING. TAKE CARE NOT TO DAMAGE SURFACES. COMPLETELY REMOVE ALL MOLD, MILDEW, AND OTHER FOREIGN SUBSTANCES.
- 8 PAINT ALL PREVIOUSLY PAINTED SURFACES (INTERIOR AND EXTERIOR). REFER TO COLOR DESIGN SPECIFICATION AND PAINT SPECIFICATION.
- 9 CAULK WINDOWS AND RE-PUTTY MUNTINS AT GLAZING AS NEEDED.
- 10 CLEAN RESTROOM WALL AND FLOOR TILE AND GROUT. PRETREAT ALL GROUT SPOTS AND STAINS. USE CHEMICAL DISINFECTANT AND SHIELDED HIGH PRESSURE CLEANING AND EXTRACTION TO REMOVE ALL FOREIGN SUBSTANCES. THOROUGHLY DRY ALL TILE AREAS AND SEAL FLOOR TILE GROUT WITH LATICRETE STONETECH HEAVY DUTY GROUT SEALER OR APPROVED EQUAL.
- 11 PROTECT CONCRETE FLOOR. CLEAN AND MOP AFTER ALL WORK HAS BEEN COMPLETED.
- 12 INSTALL NEW LITERATURE RACKS AS DIRECTED. (OWNER FURNISHED)
- 13 INSTALL PETWAY STATIONS AS DIRECTED. (OWNER FURNISHED)

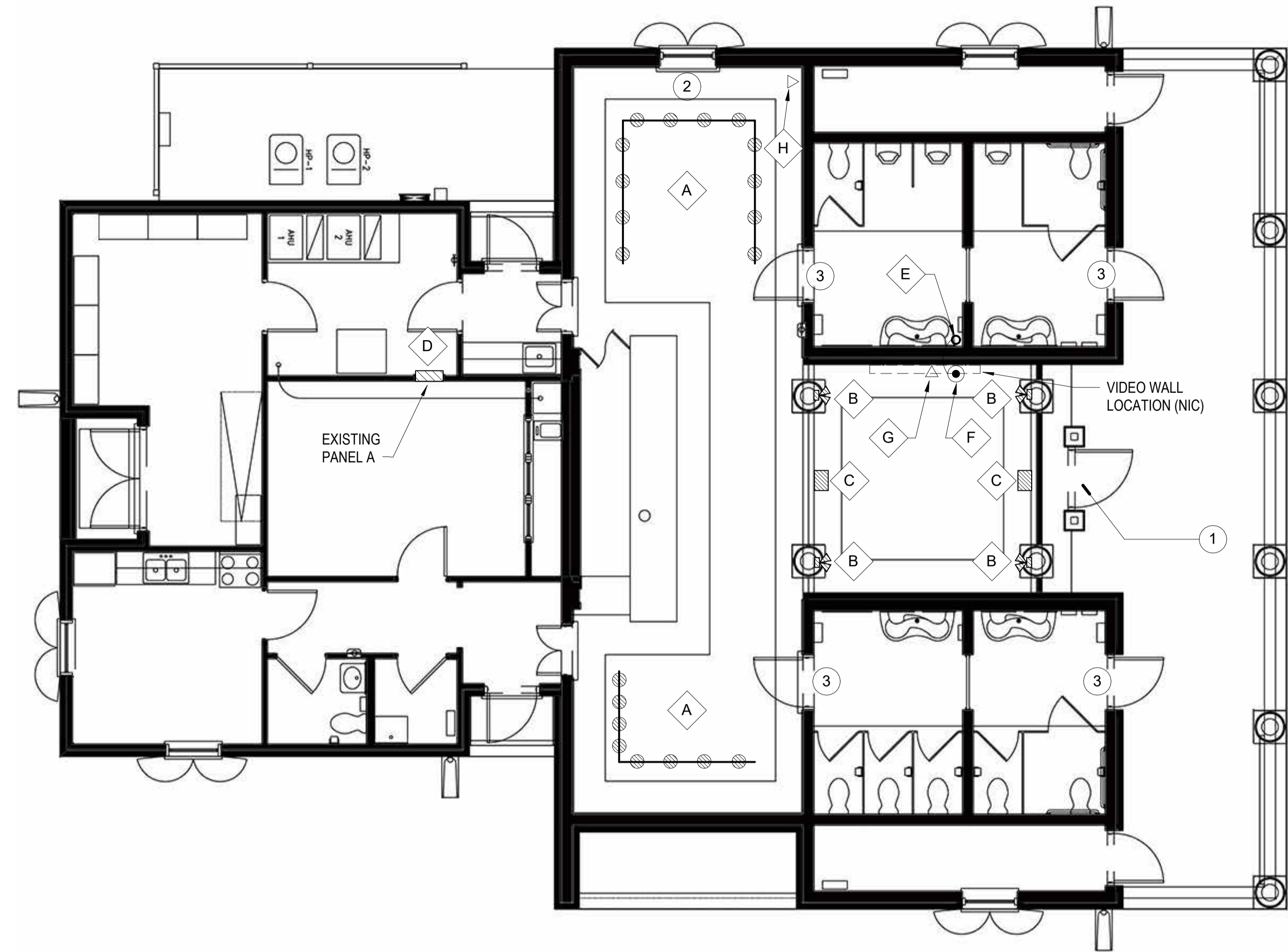
WILKINSON ELECTRICAL NOTES

- A REPLACE EXISTING TRACK LIGHTING HEADS WITH JUNO TL381L TRAC HEAD (WHITE) OR APPROVED EQUAL.
- B REPLACE EXISTING FLOOD LIGHTS WITH FUSION SERIES FPR1-LED-WM-1200L-DIM10-MVOLT-FL-35K-90-WH BY ELITE LIGHTING OR APPROVED EQUAL.
- C REPLACE EXISTING WALLPACKS WITH LEOTEK CAT NO. ES1 24H MV WW W WH 530 OR APPROVED EQUAL. MOUNT FACING UP.
- D PROVIDE AND INSTALL A DEDICATED 110V-15AMP CIRCUIT FROM EXISTING PANEL (VERIFY AVAILABLE SPACE IN PANEL) TO VIDEO WALL LOCATION AS SHOWN ON PLANS (VIDEO WALL PROVIDED AND INSTALLED BY OTHERS). FLEXIBLE METAL CONDUIT ALLOWED IN CONCEALED SPACES (PROVIDE GROUND CONDUCTOR). STRAP AS PER NEC.
- E DROP POWER CIRCUIT FROM J-BOX (IN ATTIC SPACE) THRU CEILING WITH 14 GAUGE, 3-CONDUCTOR S/O CORD ON THIS SIDE OF WALL. THEN ROUTE THRU WALL AT 72" A.F.F. ROUTE IN LEAST CONSPICUOUS LOCATION POSSIBLE. STRAP CORD TO WALL AS REQUIRED.
- F TERMINATE S/O CORD ON THIS SIDE OF WALL WITH A STRAIGHT BLADE CONNECTOR, 15 AMP, 125 V, NEMA 5-15R, 2P, 3W, BLACK. PROVIDE 12" PIGTAIL FROM WALL TO END OF CORD.
- G DATA LOCATION AT 72" A.F.F. FOR VIDEO WALL. DATA CABLING PROVIDED AND INSTALLED BY OTHERS.
- H PROVIDE AND INSTALL DATA OUTLET BOX EQUAL TO WIREMOLD SURE-SNAP 400 SERIES (#2348S-51) WITH APPROPRIATE COVER PLATE AT THIS LOCATION FOR INFORMATION KIOSK (KIOSK PROVIDED BY OTHERS), AND/OR WORK DESKS (WORK DESKS PROVIDED BY OTHERS). MOUNT BOX DIRECTLY ABOVE BASE MOULDING. PROVIDE WIREMOLD SERIES 400 RACEWAY #400BAC OR EQUAL. INSTALL RACEWAY IN LEAST CONSPICUOUS LOCATION, SUCH AS IN CORNERS AND ALONG TOP OF BASE MOULDING. AVOID ROUTING ON OPEN WALLS. (DATA CABLE TO BE PROVIDED AND INSTALLED BY OTHERS.)

- CONDUIT DROP
- ▽ DATA OUTLET
- STRAIGHT BLADE CONNECTOR
- ◻ EXISTING FLOOD LIGHT
- ◻ EXISTING WALLPACK
- EXISTING TRACK LIGHTING

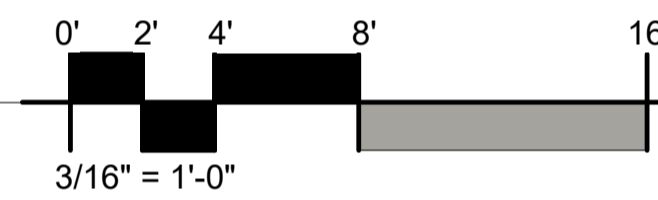
ELEC/DATA LEGEND

1/4" = 1'-0"



WILKINSON WELCOME CENTER FLOOR PLAN

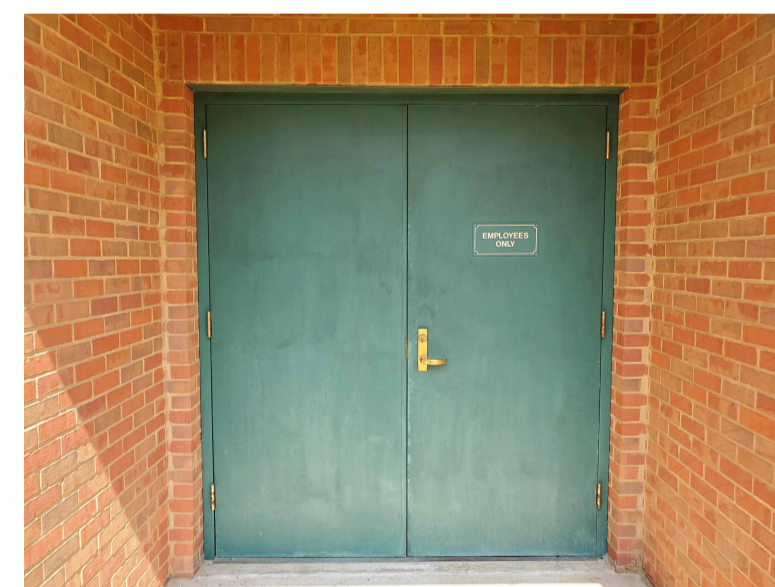
3/16" = 1'-0"



1 8



7 8



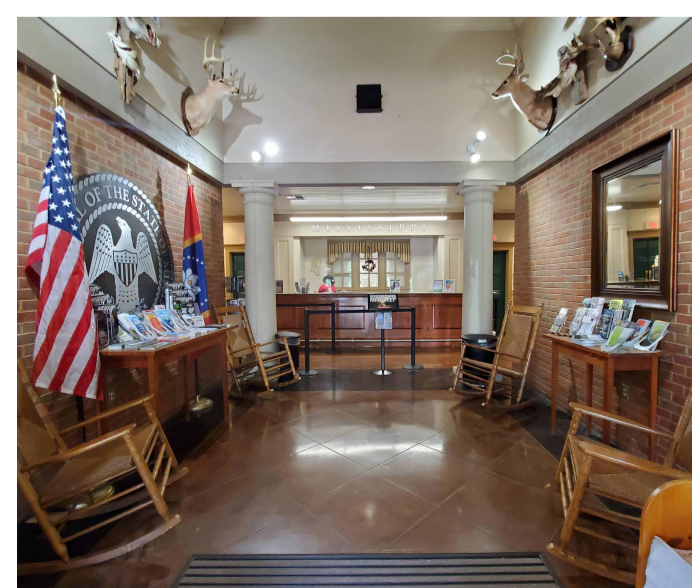
8



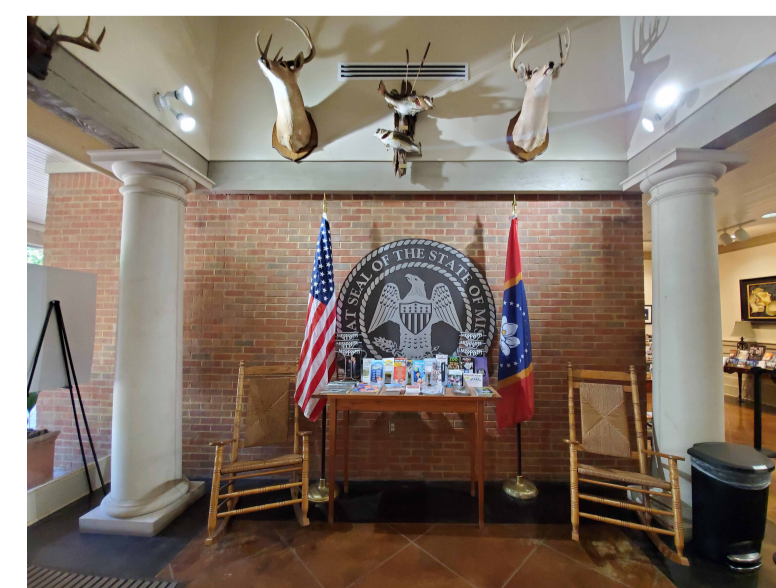
8 A



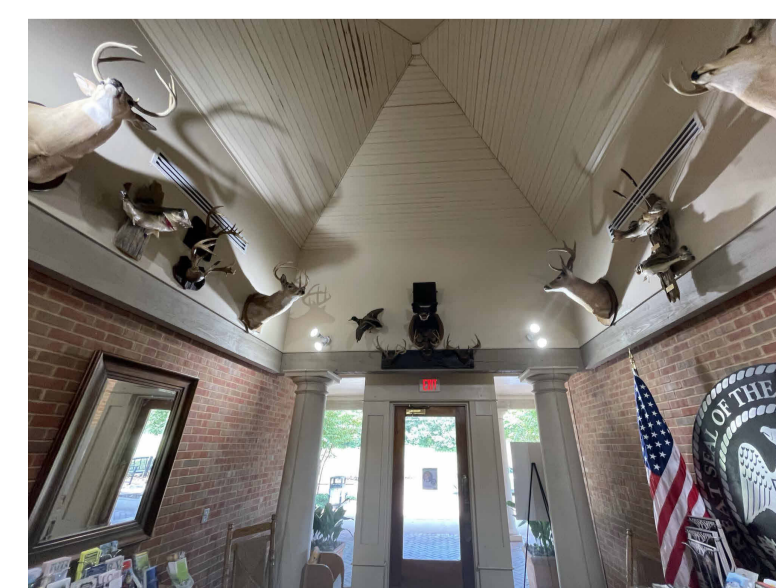
8 A



8 B C



8 B C



8 B C