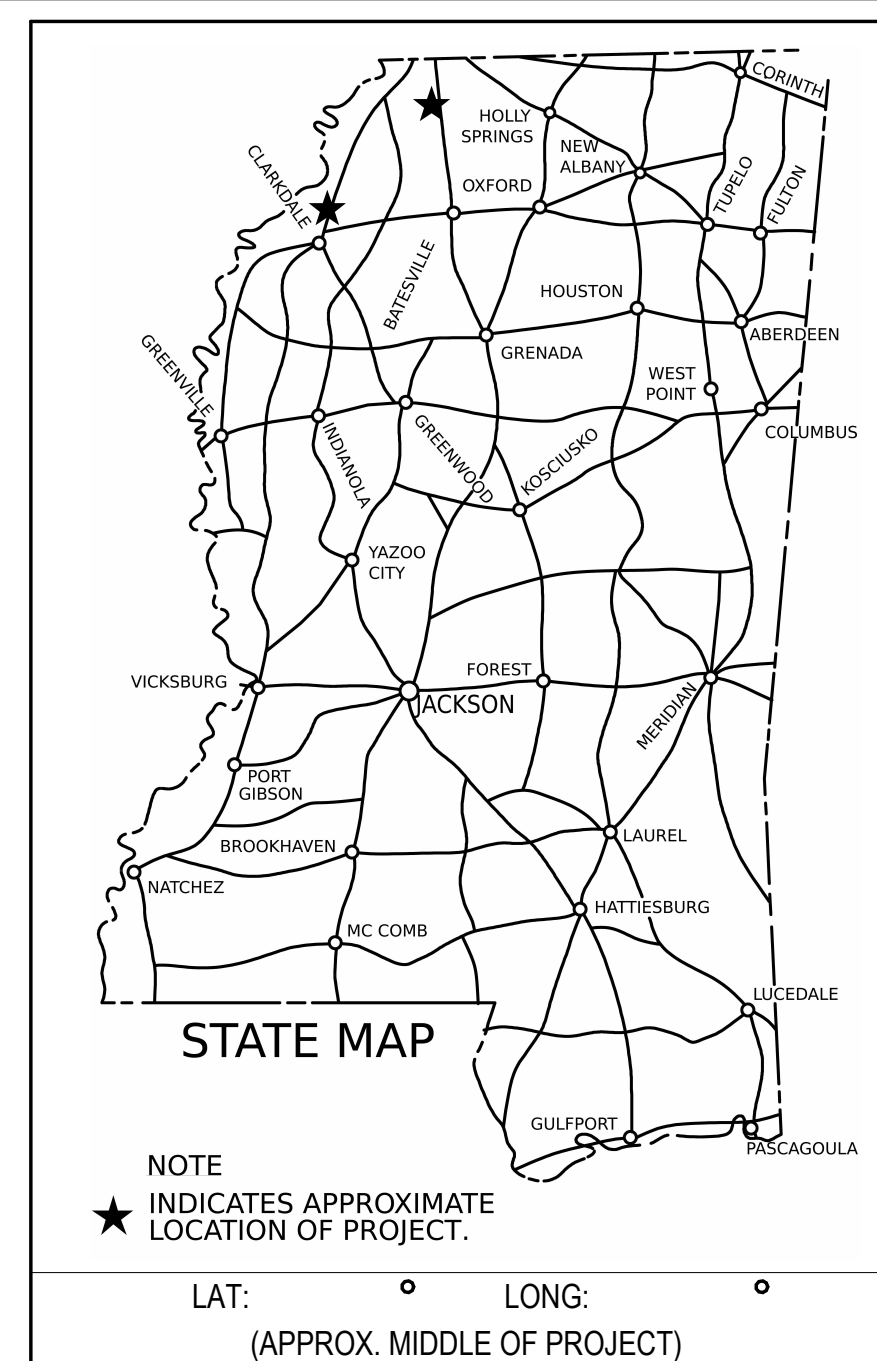


STATE OF MISSISSIPPI
MISSISSIPPI DEPARTMENT OF TRANSPORTATION

DISTRICT TWO WELCOME CENTER
RENOVATIONS

STATE PROJ. NO.S BWO-2162-14(002), BWO-2199-17(003)

COAHOMA & DESOTO
COUNTIES



PERMITS ACQUIRED
BY MDOT

WETLANDS AND WATERS PERMITS		
	WATERS	WETLANDS
NATIONWIDE #14	<input type="checkbox"/>	<input type="checkbox"/>
NATIONWIDE (OTHER)*	<input type="checkbox"/>	<input type="checkbox"/>
GENERAL *	<input type="checkbox"/>	<input type="checkbox"/>
INDIVIDUAL (404)*	<input type="checkbox"/>	<input type="checkbox"/>
STORMWATER PERMIT		<input type="checkbox"/>
Y	REQUIRED. CNOI SUBMITTED BY MDOT (DISTURBED AREA=5 ACRES)	
S	REQUIRED. SCNOI TO BE SUBMITTED BY CONTRACTOR (1 TO 4.99 ACRES)	
N	NO STORMWATER PERMIT REQUIRED (<1 ACRE)	
APPROVED BY:		

CONSTRUCTION PROJECT DATA

EXTERNAL PROJ. NO.	FMS & DETAIL
BWO-2162-14(002) BWO-2199-17(003)	503757/303000 503757/304000



ARCHITECTURAL

P S & E DATE: 8-26-2024

APPROVED:

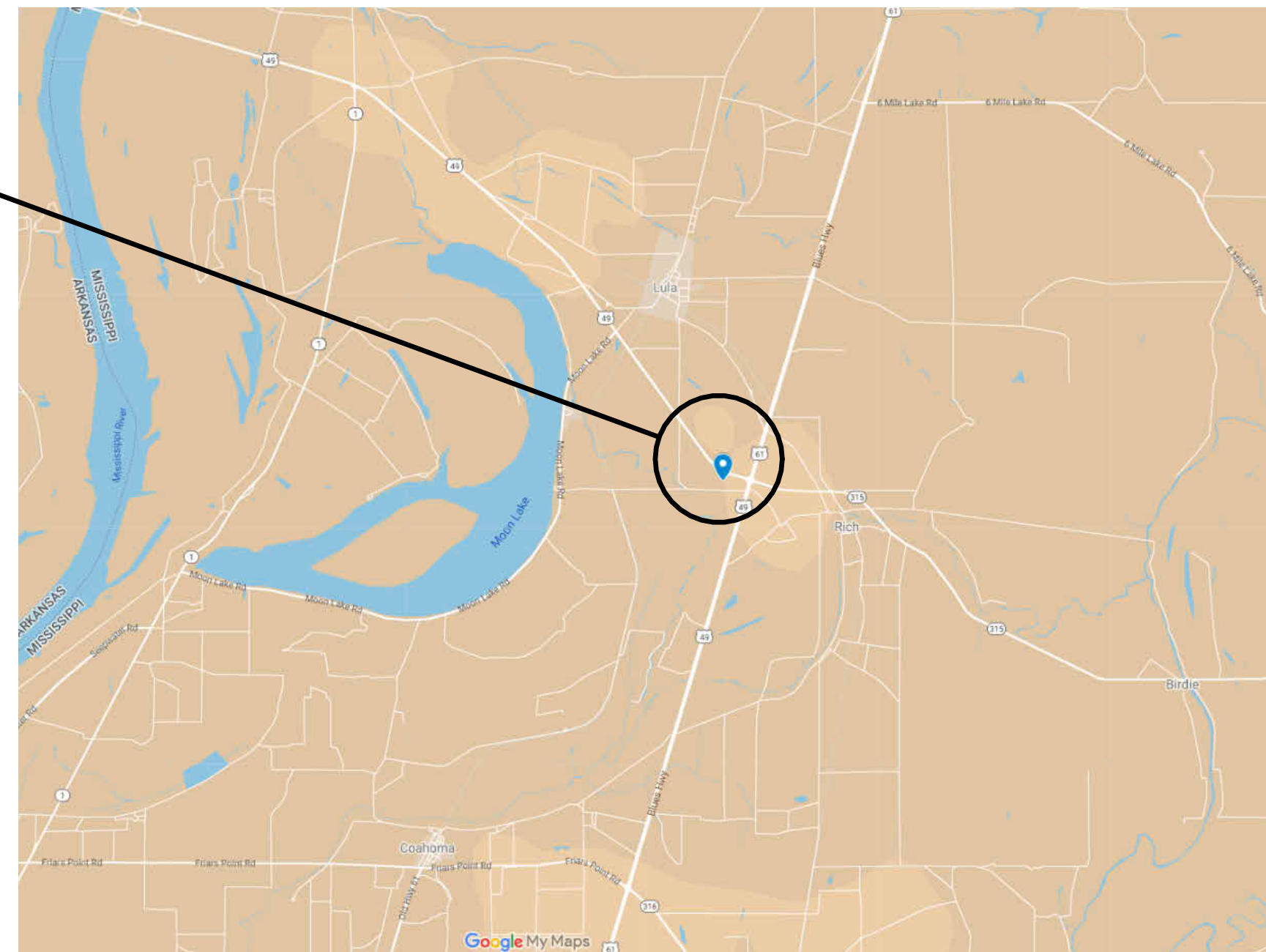
DEPUTY EXECUTIVE DIRECTOR / CHIEF ENGINEER

EXECUTIVE DIRECTOR



PROJECT LOCATION

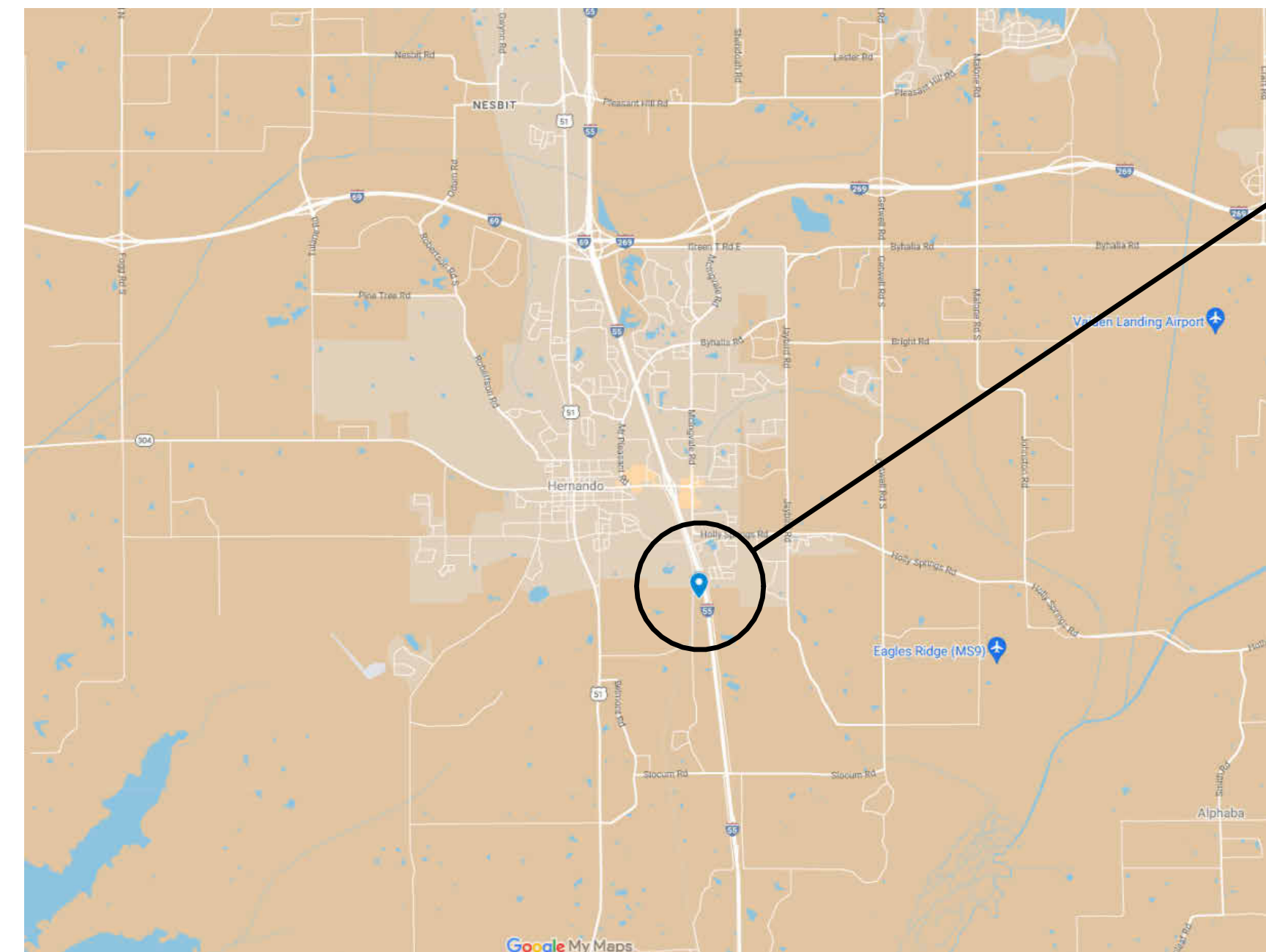
34.42339, -90.46811



COAHOMA

PROJECT LOCATION

34.80664, -89.97093



DESOTO

DISTRICT TWO WELCOME CENTER RENOVATIONS COAHOMA, DESOTO



No.	Description	Date	Issued by

DESIGNED BY: ASU
 DETAILED BY: SMW
 CHECKED BY: JRP
 DATE: 8-26-2024

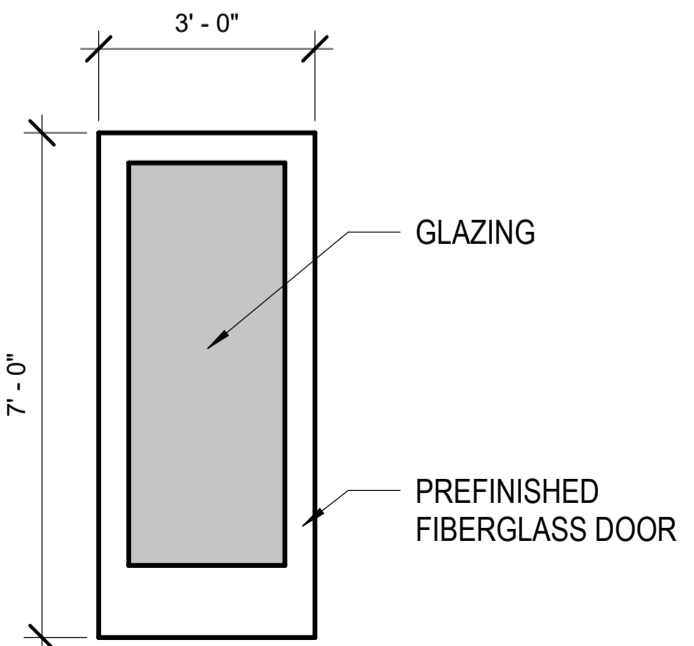
COAHOMA CO. WELCOME CENTER BUILDING

COAHOMA NOTES

- 1 REMOVE DOOR AND REPLACE WITH NEW DOOR AND HARDWARE. SEE SPECIFICATION.
- 2 REMOVE CURTAIN RODS AND PATCH HOLES.
- 3 REPLACE DRINKING FOUNTAIN (OWNER FURNISHED). PATCH AND REPAIR BRICK AS REQUIRED PRIOR TO PAINTING.
- 4 REPLACE HANDWASHING STATION WITH BRADLEY TLX-2 WITH VERGE METRO FAUCETS OR APPROVED EQUAL. FAUCET SENSORS TO BE CONNECTED TO HOUSE POWER.
- 5 REPLACE THREE (3) HAND DRYERS (PER RESTROOM) WITH BRADLEY MODEL 2923-28W001 OR APPROVED EQUAL.
- 6 REPAIR CEILING PRIOR TO PAINTING.
- 7 EXISTING DOOR - REMOVE HARDWARE, CLEAN, AND REUSE. PREP AND PAINT EXISTING DOOR. SEE SPECIFICATION. REINSTALL DOOR AND HARDWARE.
- 8 REMOVE BULLETIN BOARD AND PATCH HOLES.
- 9 PRESSURE WASH EXTERIOR OF BUILDING. TAKE CARE NOT TO DAMAGE SURFACES. COMPLETELY REMOVE ALL MOLD, MILDEW, AND OTHER FOREIGN SUBSTANCES.
- 10 PRESSURE WASH WELCOME CENTER SIGN. TAKE CARE NOT TO DAMAGE SURFACES.
- 11 CLEAN RESTROOM WALL AND FLOOR TILE AND GROUT. PRETREAT ALL GROUT SPOTS AND STAINS. USE CHEMICAL DISINFECTANT AND SHIELDED HIGH PRESSURE CLEANING AND EXTRACTION TO REMOVE ALL FOREIGN SUBSTANCES. THOROUGHLY DRY ALL TILE AREAS AND SEAL FLOOR TILE GROUT WITH LATI-CRETE STONETECH HEAVY DUTY GROUT SEALER OR APPROVED EQUAL.
- 12 PAINT INTERIOR BRICK WALLS. REFER TO COLOR DESIGN SPECIFICATION AND PAINT SPECIFICATION.
- 13 PAINT ALL PREVIOUSLY PAINTED INTERIOR SURFACES. REFER TO COLOR DESIGN SPECIFICATION AND PAINT SPECIFICATION.
- 14 PAINT ALL PREVIOUSLY PAINTED EXTERIOR SURFACES. REFER TO COLOR DESIGN SPECIFICATION AND PAINT SPECIFICATION.
- 15 STRIP WAX FROM BRICK FLOORS. CLEAN AND SEAL BRICK WITH PROSOCO SURE KLEAN WEATHER SEAL SILOXANE PD OR APPROVED EQUAL. APPLY ACCORDING TO MANUFACTURER'S RECOMMENDATIONS.
- 16 CAULK WINDOWS AND RE-PUTTY MUNTINS AT GLAZING AS NEEDED BEFORE PAINTING.
- 17 INSTALL NEW LITERATURE RACKS AS DIRECTED. (OWNER FURNISHED)
- 18 INSTALL PETWAY STATIONS AS DIRECTED. (OWNER FURNISHED)
- 19 REMOVE EXISTING WALL MOUNTED TV AND MOUNT AS DIRECTED. REMOVE UNUSED SURFACE MOUNTED TV CABLES AS DIRECTED. PATCH HOLES PRIOR TO PAINTING.
- 20 REMOVE TRACK LIGHTING. COVER BOX WITH PLATE AND PATCH CEILING PRIOR TO PAINTING.
- 21 THERE IS NO EXISTING FIXTURE AT THIS LOCATION. PROVIDE NECESSARY ABOVE CEILING SUPPORTS FOR THE INSTALLATION OF THE NEW LIGHT FIXTURE. REUSE TRACK LIGHTING CIRCUIT FOR POWER AND CONTROL.
- 22 ALL SALVAGE ITEMS TO BE REMOVED CAREFULLY AND RETURNED TO OWNER.

COAHOMA ELECTRICAL NOTES

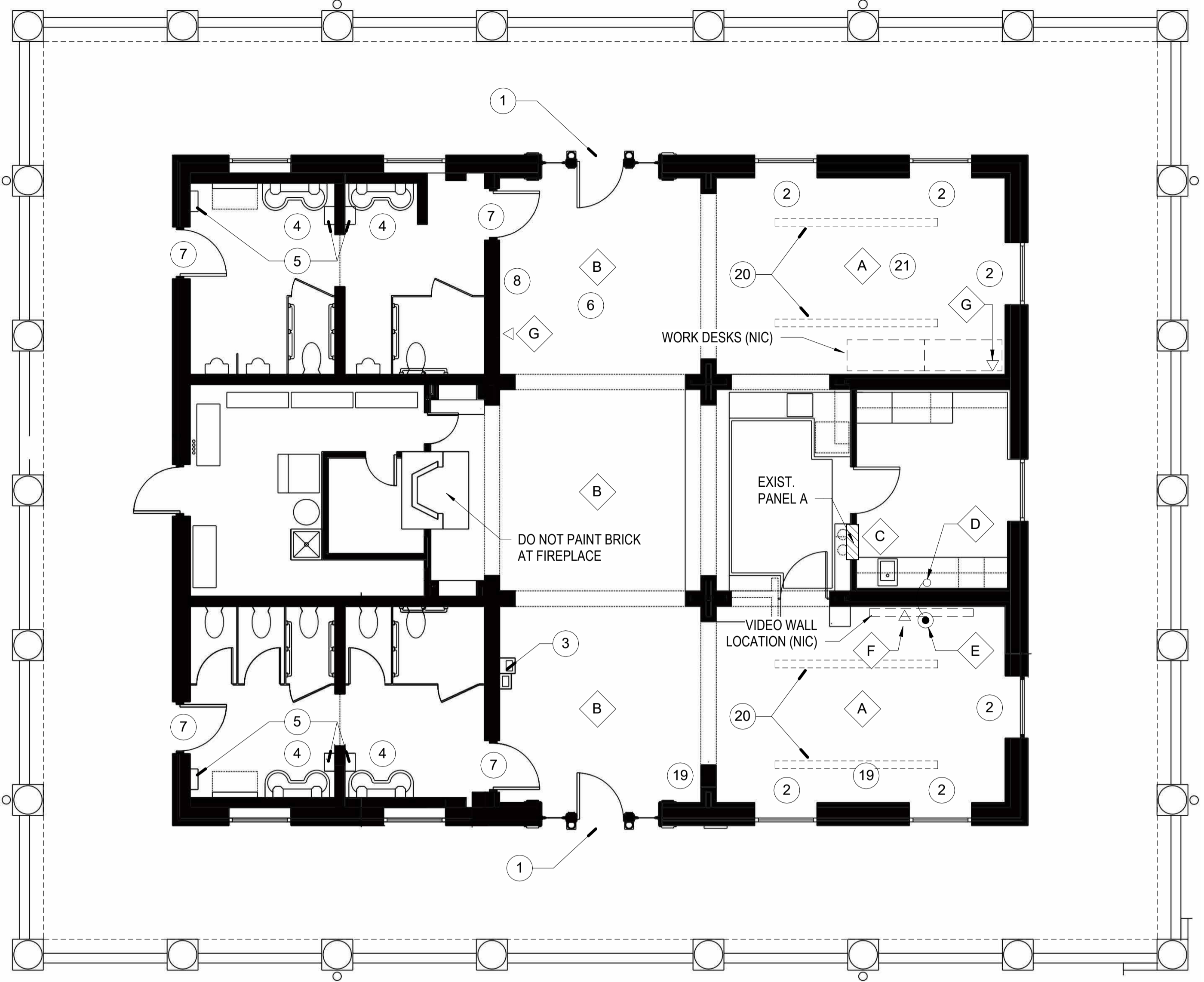
- A REPLACE CHANDELIER WITH OWNER FURNISHED 8 BULB CHANDELIER FIXTURE. PROVIDE (8) 6 WATT LED CANDELABRA BULBS. MOUNT FIXTURE 9' - 0" A.F.F.
- B REPLACE CHANDELIER WITH OWNER FURNISHED 6 BULB CHANDELIER FIXTURE. PROVIDE (6) 6 WATT LED CANDELABRA BULBS. MOUNT FIXTURE 9' - 0" A.F.F.
- C PROVIDE AND INSTALL A DEDICATED 110V-15AMP CIRCUIT FROM EXISTING PANEL (VERIFY AVAILABLE SPACE IN PANEL) TO VIDEO WALL LOCATION AS SHOWN ON PLANS (VIDEO WALL PROVIDED AND INSTALLED BY OTHERS). FLEXIBLE METAL CONDUIT ALLOWED IN CONCEALED SPACES (PROVIDE GROUND CONDUCTOR). STRAP AS PER NEC.
- D DROP POWER CIRCUIT FROM J-BOX (IN ATTIC SPACE) THRU CEILING WITH 14 GAUGE, 3-CONDUCTOR S/O CORD ON THIS SIDE OF WALL, THEN ROUTE THRU WALL AT 72" A.F.F. ROUTE IN LEAST CONSPICUOUS LOCATION POSSIBLE. STRAP CORD TO WALL AS REQUIRED.
- E TERMINATE S/O CORD ON THIS SIDE OF WALL WITH A STRAIGHT BLADE CONNECTOR, 15 AMP, 125 V, NEMA 5-15R, 2P, 3W, BLACK. PROVIDE 12" PIGTAIL FROM WALL TO END OF CORD.
- F DATA LOCATION AT 72" A.F.F. FOR VIDEO WALL. DATA CABLING PROVIDED AND INSTALLED BY OTHERS.
- G PROVIDE AND INSTALL DATA OUTLET BOX EQUAL TO WIREMOLD SURE-SNAP 400 SERIES (#2348S-51) WITH APPROPRIATE COVER PLATE AT THIS LOCATION FOR INFORMATION KIOSK (KIOSK PROVIDED BY OTHERS), AND/OR WORK DESKS (WORK DESKS PROVIDED BY OTHERS). MOUNT BOX DIRECTLY ABOVE BASE MOULDING. PROVIDE WIREMOLD SERIES 400 RACEWAY #400BAC OR EQUAL. INSTALL RACEWAY IN LEAST CONSPICUOUS LOCATION, SUCH AS IN CORNERS AND ALONG TOP OF BASE MOULDING. AVOID ROUTING ON OPEN WALLS. (DATA CABLE TO BE PROVIDED AND INSTALLED BY OTHERS.)



1 ENTRY DOOR ELEVATION
 3/8" = 1'-0"

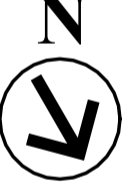
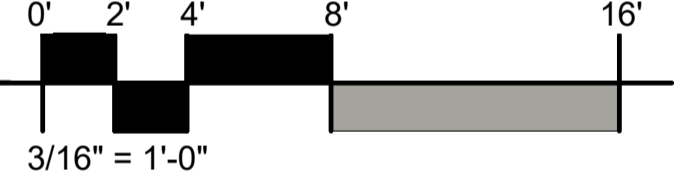
ELEC/DATA LEGEND
 1/4" = 1'-0"

- CONDUIT DROP
- ▽ DATA OUTLET
- STRAIGHT BLADE CONNECTOR



COAHOMA WELCOME CENTER FLOOR PLAN

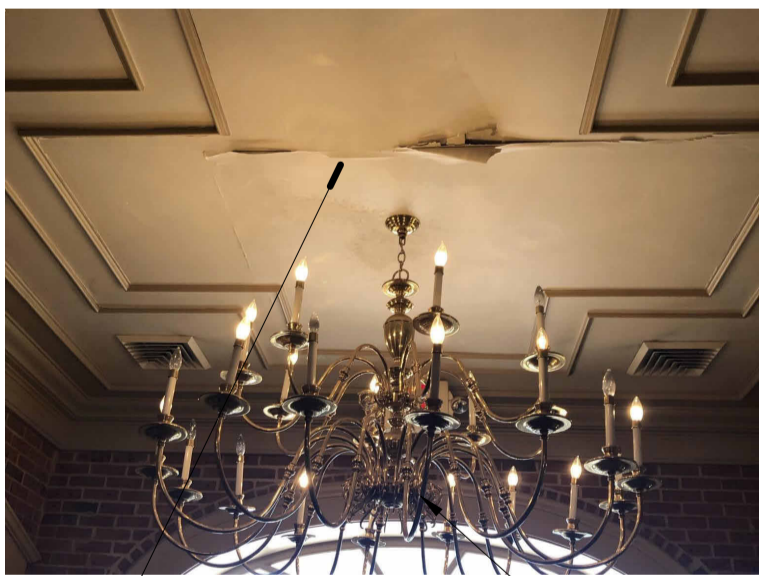
3/16" = 1'-0"



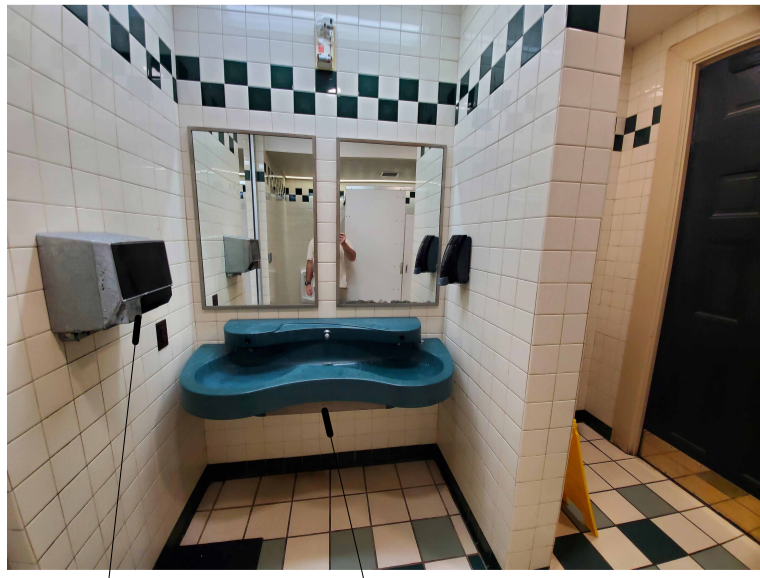
1



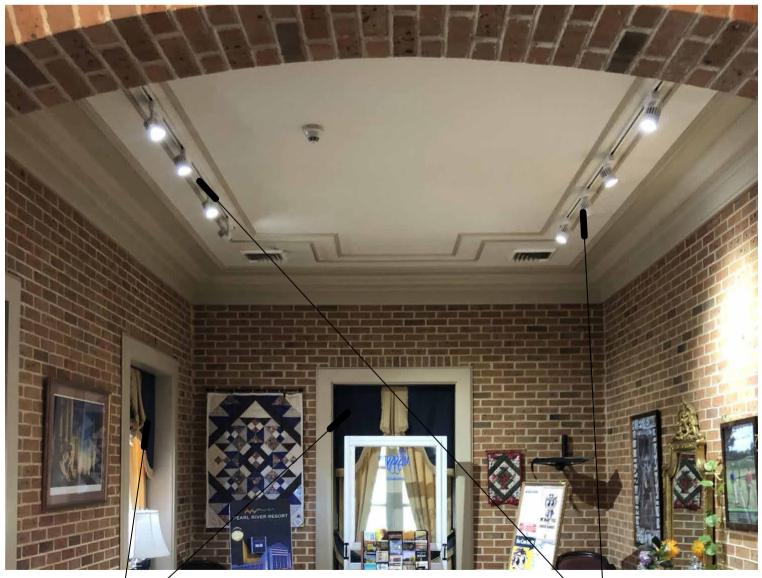
4



6



5



2

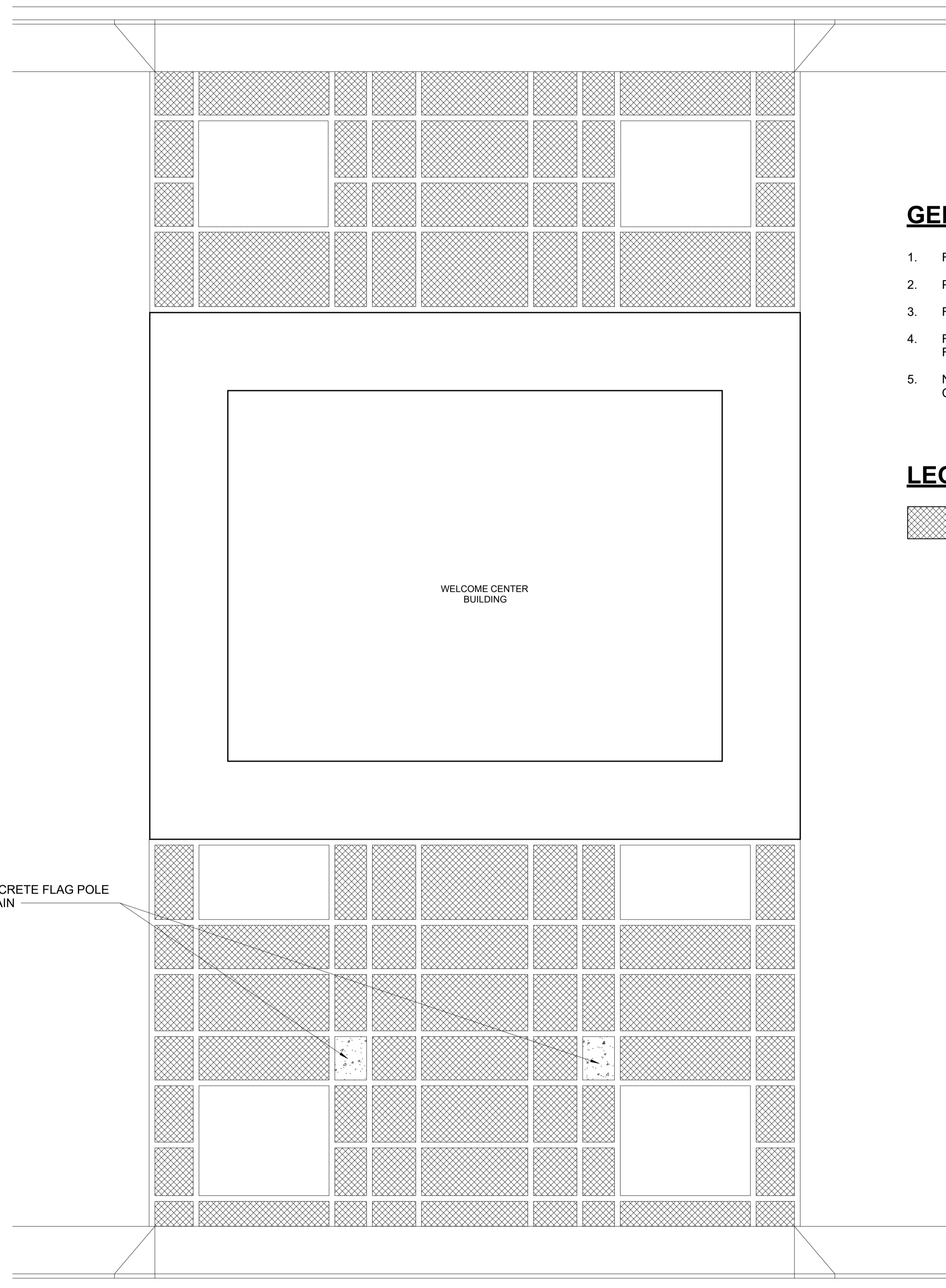
DISTRICT TWO WELCOME CENTER RENOVATIONS
COAHOMA, DESOTO



No.	Description	Date	Issued by

DESIGNED BY: ASU
 DETAILED BY: SMW
 CHECKED BY: JRP
 DATE: 8-26-2024

COAHOMA CO. WELCOME CENTER HARDSCAPE



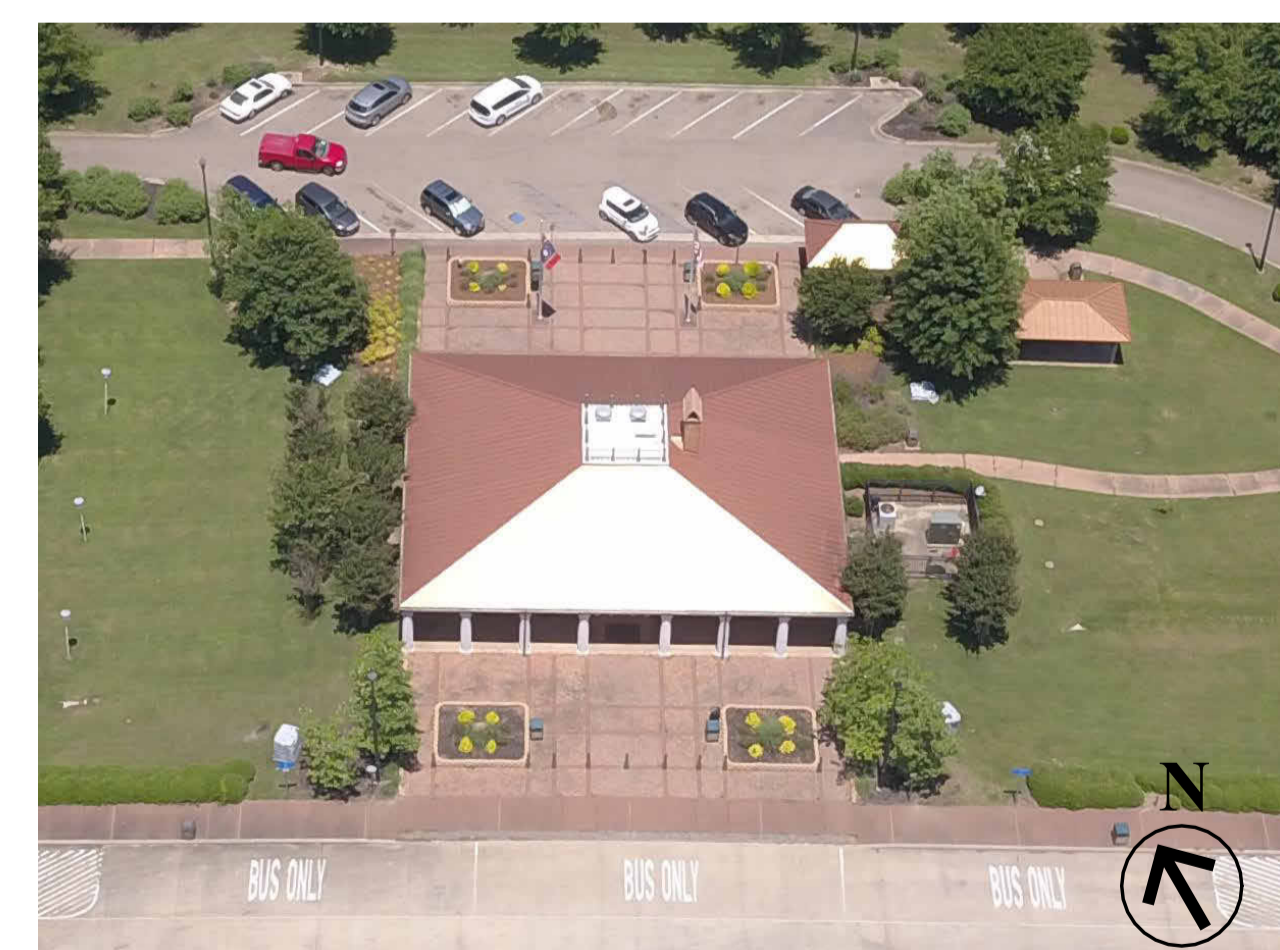
GENERAL NOTES

1. REMOVE AND DISPOSE OF EXISTING BRICK PAVERS.
2. PAVER AREA IS APPROXIMATELY 3450 SF. FIELD VERIFY.
3. FILL VOIDS AND COMPACT AS NECESSARY.
4. REPLACE PAVERS WITH POURED CONCRETE, 3500 PSI, FIBER REINFORCED, BROOM FINISH, TOOLED EDGES.
5. NEW CONCRETE SHALL BE LEVEL WITH EXISTING CONCRETE BORDERS.

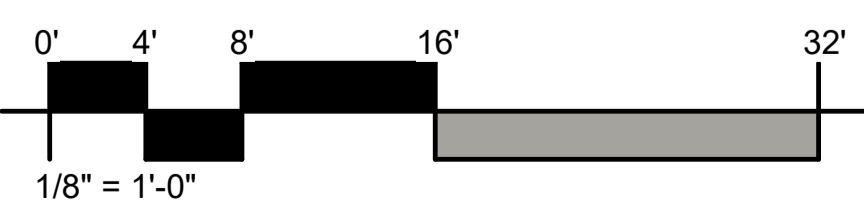
LEGEND

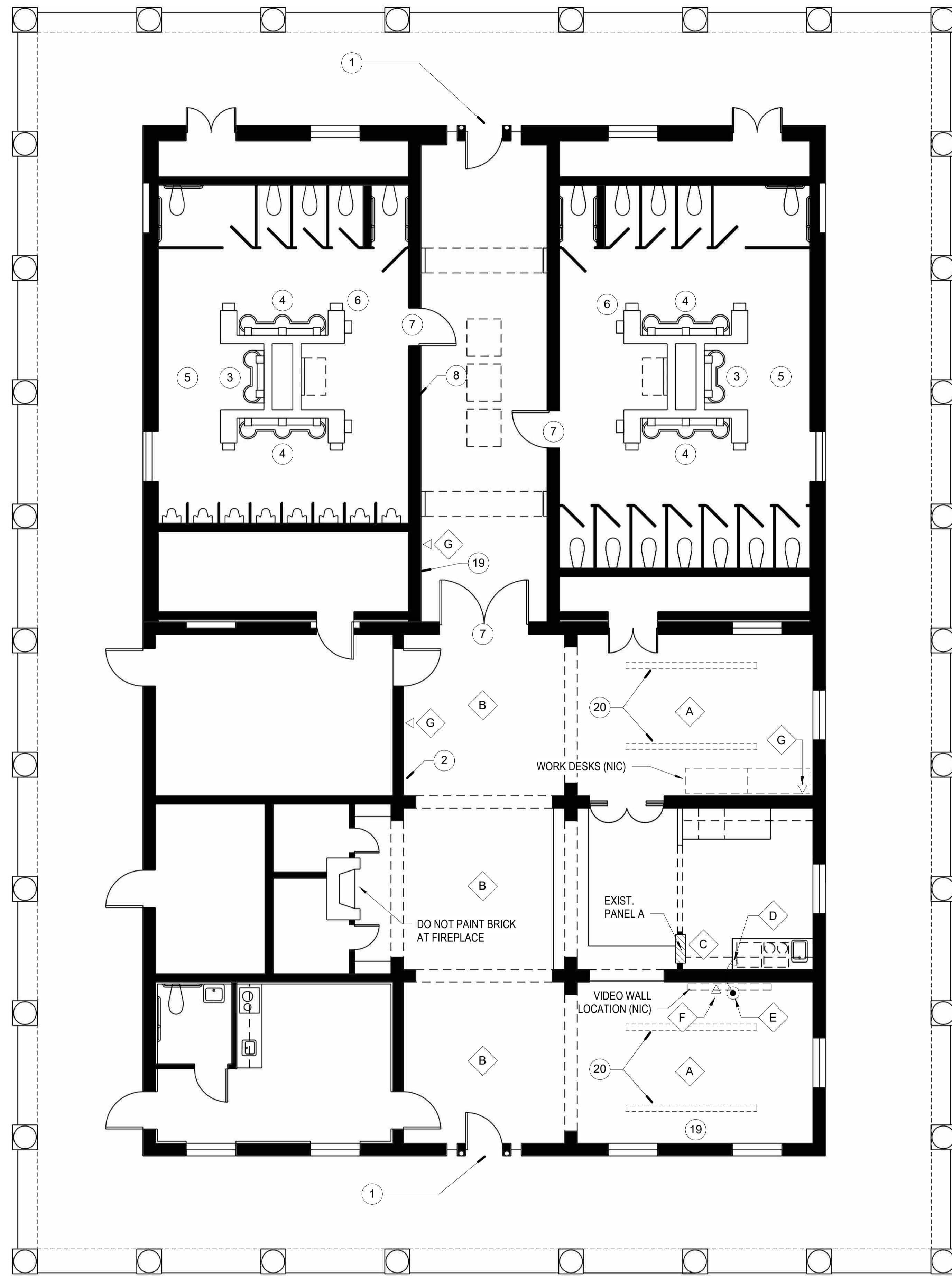
 EXISTING BRICK PAVERS TO BE REMOVED

EXISTING CONDITIONS

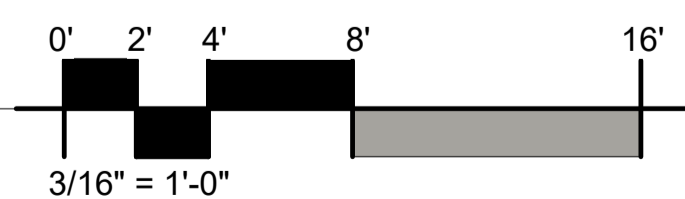


1 COAHOMA WELCOME CENTER PAVING PLAN
 1/8" = 1'-0"





DESOTO WELCOME CENTER FLOOR PLAN
3/16" = 1'-0"

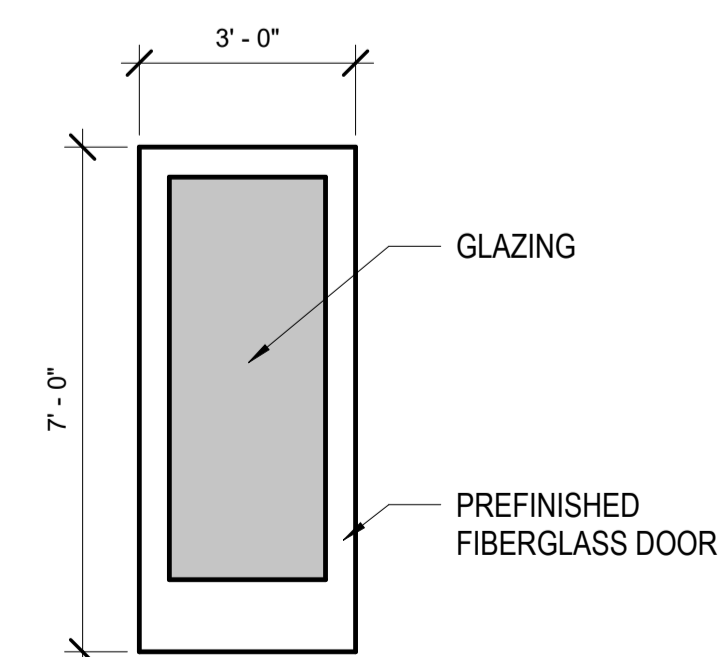


DESOTO NOTES

- 1 REMOVE DOOR AND REPLACE WITH NEW DOOR AND HARDWARE. SEE SPECIFICATION.
- 2 REPLACE DRINKING FOUNTAIN (OWNER FURNISHED). PATCH AND REPAIR BRICK AS REQUIRED PRIOR TO PAINTING.
- 3 REPLACE HANDWASHING STATION WITH BRADLEY TLX-2 WITH VERGE METRO FAUCETS OR APPROVED EQUAL. FAUCET SENSORS TO BE CONNECTED TO HOUSE POWER.
- 4 REPLACE HANDWASHING STATION WITH BRADLEY TLX-3 WITH VERGE METRO FAUCETS OR APPROVED EQUAL. FAUCET SENSORS TO BE CONNECTED TO HOUSE POWER.
- 5 REPLACE EIGHT (8) 24" X 36" MIRRORS (PER RESTROOM) WITH BRADLEY MODEL 781 OR APPROVED EQUAL.
- 6 REPLACE FIVE (5) HAND DRYERS (PER RESTROOM) WITH BRADLEY MODEL 2923-28W001 OR APPROVED EQUAL.
- 7 EXISTING DOOR - REMOVE HARDWARE, CLEAN, AND REUSE. PREP AND PAINT EXISTING DOOR. SEE SPECIFICATION. REINSTALL DOOR AND HARDWARE.
- 8 REMOVE BULLETIN BOARD AND PATCH HOLES.
- 9 PRESSURE WASH EXTERIOR OF BUILDING. TAKE CARE NOT TO DAMAGE SURFACES. COMPLETELY REMOVE ALL MOLD, MILDEW, AND OTHER FOREIGN SUBSTANCES.
- 10 PRESSURE WASH WELCOME CENTER SIGN. TAKE CARE NOT TO DAMAGE SURFACES.
- 11 CLEAN RESTROOM WALL AND FLOOR TILE AND GROUT. PRETREAT ALL GROUT SPOTS AND STAINS. USE CHEMICAL DISINFECTANT AND SHIELDED HIGH PRESSURE CLEANING AND EXTRACTION TO REMOVE ALL FOREIGN SUBSTANCES. THOROUGHLY DRY ALL TILE AREAS AND SEAL FLOOR TILE GROUT WITH LATICRETE STONETECH HEAVY DUTY GROUT SEALER OR APPROVED EQUAL.
- 12 PAINT INTERIOR BRICK WALLS. REFER TO COLOR DESIGN SPECIFICATION AND PAINT SPECIFICATION
- 13 PAINT ALL PREVIOUSLY PAINTED INTERIOR SURFACES. REFER TO COLOR DESIGN SPECIFICATION AND PAINT SPECIFICATION
- 14 PAINT ALL PREVIOUSLY PAINTED EXTERIOR SURFACES. REFER TO COLOR DESIGN SPECIFICATION AND PAINT SPECIFICATION
- 15 STRIP WAX FROM BRICK FLOORS. CLEAN AND SEAL BRICK WITH PROSOCO SURE KLEAN WEATHER SEAL SILOXANE PD OR APPROVED EQUAL. APPLY ACCORDING TO MANUFACTURER'S RECOMMENDATIONS.
- 16 CAULK WINDOWS AND RE-PUTTY MUNTINS AT GLAZING AS NEEDED BEFORE PAINTING.
- 17 INSTALL NEW LITERATURE RACKS AS DIRECTED. (OWNER FURNISHED)
- 18 INSTALL PETWAY STATIONS AS DIRECTED. (OWNER FURNISHED)
- 19 REMOVE EXISTING WALL MOUNTED TV AND MOUNT AS DIRECTED. REMOVE UNUSED SURFACE MOUNTED TV CABLES AS DIRECTED. PATCH HOLES PRIOR TO PAINTING.
- 20 REMOVE TRACK LIGHTING. COVER BOX WITH PLATE AND PATCH CEILING PRIOR TO PAINTING.
- 21 ALL SALVAGE ITEMS TO BE REMOVED CAREFULLY AND RETURNED TO OWNER.

DESOTO ELECTRICAL NOTES

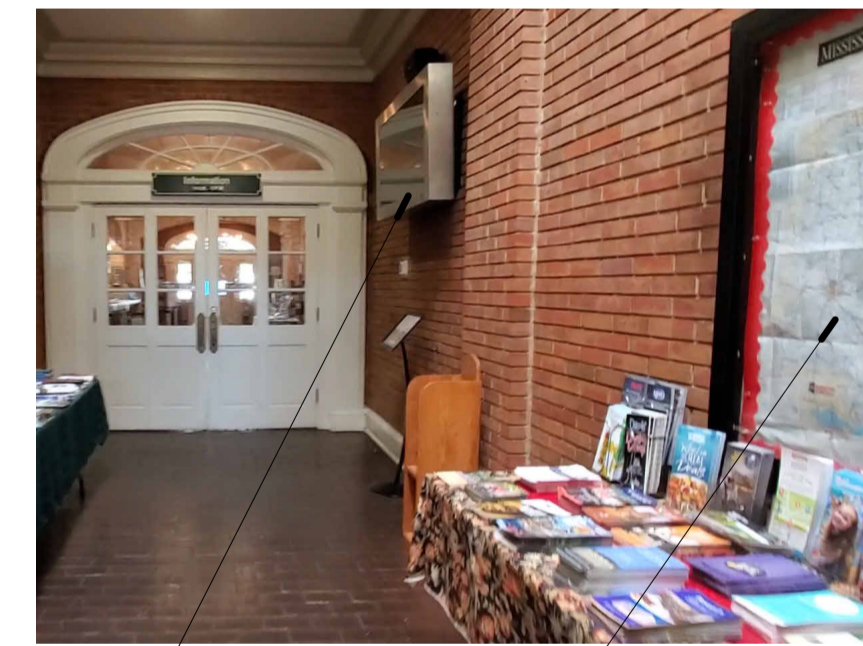
- A REPLACE CHANDELIER WITH OWNER FURNISHED 8 BULB CHANDELIER FIXTURE. PROVIDE (8) 6 WATT LED CANDELABRA BULBS. MOUNT FIXTURE 9' - 0" A.F.F.
- B REPLACE CHANDELIER WITH OWNER FURNISHED 6 BULB CHANDELIER FIXTURE. PROVIDE (6) 6 WATT LED CANDELABRA BULBS. MOUNT FIXTURE 9' - 0" A.F.F.
- C PROVIDE AND INSTALL A DEDICATED 110V-15AMP CIRCUIT FROM EXISTING PANEL (VERIFY AVAILABLE SPACE IN PANEL) TO VIDEO WALL LOCATION AS SHOWN ON PLANS (VIDEO WALL PROVIDED AND INSTALLED BY OTHERS). FLEXIBLE METAL CONDUIT ALLOWED IN CONCEALED SPACES (PROVIDE GROUND CONDUCTOR). STRAP AS PER NEC.
- D DROP POWER CIRCUIT FROM J-BOX (IN ATTIC SPACE) THRU CEILING WITH 14 GAUGE, 3-CONDUCTOR S/O CORD ON THIS SIDE OF WALL, THEN ROUTE THRU WALL AT 72" A.F.F. ROUTE IN LEAST CONSPICUOUS LOCATION POSSIBLE. STRAP CORD TO WALL AS REQUIRED.
- E TERMINATE S/O CORD ON THIS SIDE OF WALL WITH A STRAIGHT BLADE CONNECTOR, 15 AMP, 125 V, NEMA 5-15R, 2P, 3W, BLACK. PROVIDE 12" PIGTAIL FROM WALL TO END OF CORD.
- F DATA LOCATION AT 72" A.F.F. FOR VIDEO WALL. DATA CABLING PROVIDED AND INSTALLED BY OTHERS.
- G PROVIDE AND INSTALL DATA OUTLET BOX EQUAL TO WIREMOLD SURE-SNAP 400 SERIES (#2348S-51) WITH APPROPRIATE COVER PLATE AT THIS LOCATION FOR INFORMATION KIOSK (KIOSK PROVIDED BY OTHERS), AND/OR WORK DESKS (WORK DESKS PROVIDED BY OTHERS). MOUNT BOX DIRECTLY ABOVE BASE MOULDING. PROVIDE WIREMOLD SERIES 400 RACEWAY #400BAC OR EQUAL. INSTALL RACEWAY IN LEAST CONSPICUOUS LOCATION, SUCH AS IN CORNERS AND ALONG TOP OF BASE MOULDING. AVOID ROUTING ON OPEN WALLS. (DATA CABLE TO BE PROVIDED AND INSTALLED BY OTHERS.)



1 ENTRY DOOR ELEVATION
3/8" = 1'-0"

ELEC/DATA LEGEND
1/4" = 1'-0"

- CONDUIT DROP
- ▽ DATA OUTLET
- STRAIGHT BLADE CONNECTOR



FMS CON. 503757/304000

PROJECT NO. BWO-2199-17(003)

COUNTY DESOTO

DISTRICT TWO WELCOME CENTER
RENOVATIONS
COAHOMA, DESOTO



No.	Description	Date	Issued by

DESIGNED BY: ASU
 DETAILED BY: SMW
 CHECKED BY: JRP
 DATE: 8-26-2024

DESOTO CO.
WELCOME CENTER
BUILDING

WORKING NO. **A103**

SHEET NO. 4

DISTRICT TWO WELCOME CENTER RENOVATIONS
COAHOMA, DESOTO



No.	Description	Date	Issued by

DESIGNED BY: ASU
 DETAILED BY: SMW
 CHECKED BY: JRP
 DATE: 8-26-2024

DESOTO CO.
 WELCOME CENTER
 HARDSCAPE

WORKING NO. **A104**

SHEET NO. 5

EXISTING CONDITIONS

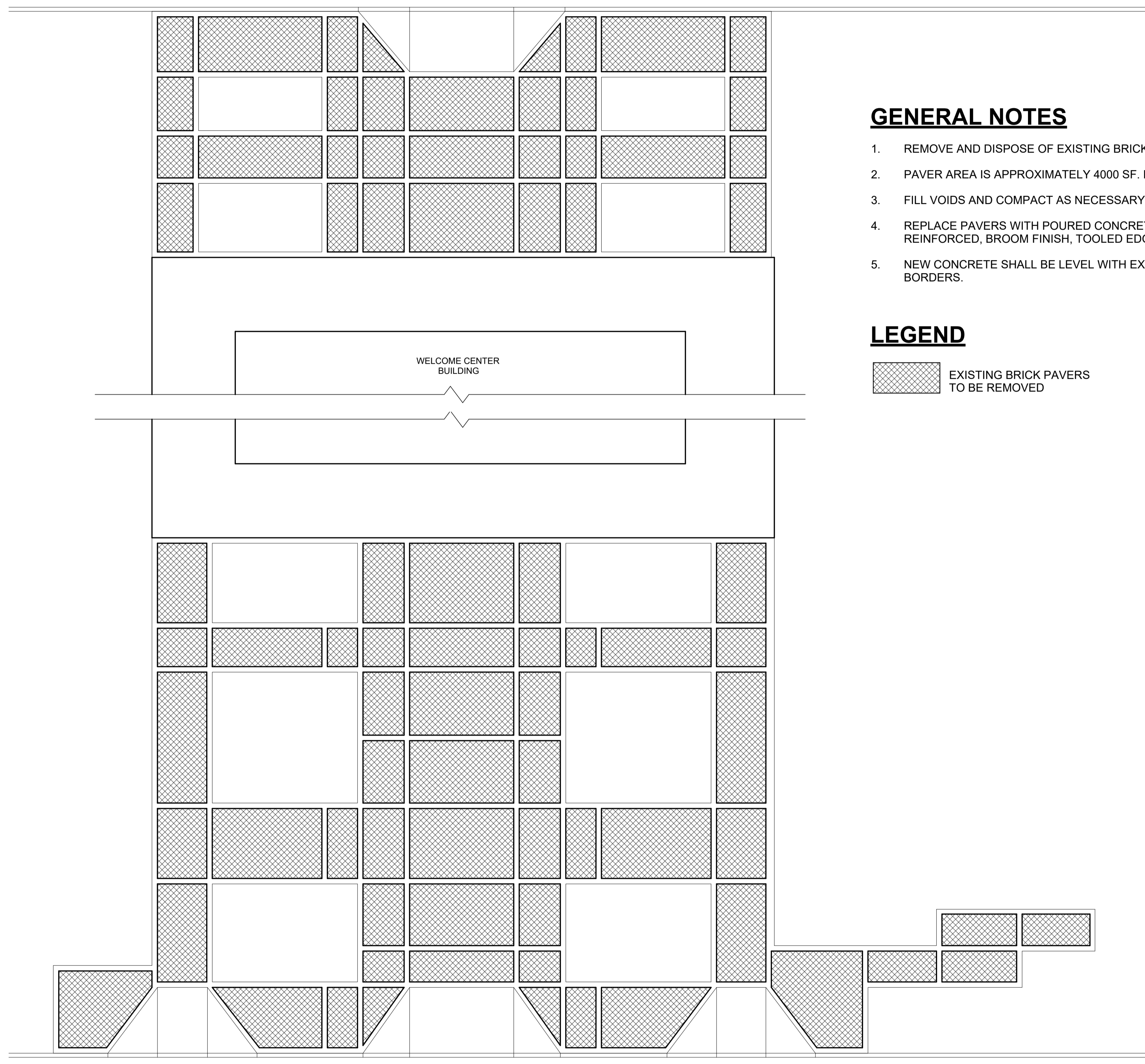


GENERAL NOTES

1. REMOVE AND DISPOSE OF EXISTING BRICK PAVERS.
2. PAVER AREA IS APPROXIMATELY 4000 SF. FIELD VERIFY.
3. FILL VOIDS AND COMPACT AS NECESSARY.
4. REPLACE PAVERS WITH POURED CONCRETE, 3500 PSI, FIBER REINFORCED, BROOM FINISH, TOOLED EDGES.
5. NEW CONCRETE SHALL BE LEVEL WITH EXISTING CONCRETE BORDERS.

LEGEND

EXISTING BRICK PAVERS TO BE REMOVED



1 DESOTO WELCOME CENTER EXISTING PAVING PLAN
 1/8" = 1'-0"

