

SECTION 905 -- PROPOSAL (CONTINUED)

I (We) hereby certify by digital signature and electronic submission via Bid Express of the Section 905 proposal below, that all certifications, disclosures and affidavits incorporated herein are deemed to be duly executed in the aggregate, fully enforceable and binding upon delivery of the bid proposal. I (We) further acknowledge that this certification shall not extend to the bid bond or alternate security which must be separately executed for the benefit of the Commission. This signature does not cure deficiencies in any required certifications, disclosures and/or affidavits. I (We) also acknowledge the right of the Commission to require full and final execution on any certification, disclosure or affidavit contained in the proposal at the Commission's election upon award. Failure to so execute at the Commission's request within the time allowed in the Standard Specifications for execution of all contract documents will result in forfeiture of the bid bond or alternate security.

Bidder acknowledges receipt of and has added to and made a part of the proposal and contract documents the following addendum (addenda):

ADDENDUM NO. <u>1</u>	DATED <u>10/16/2024</u>	ADDENDUM NO. _____	DATED _____
ADDENDUM NO. <u>2</u>	DATED <u>10/30/2024</u>	ADDENDUM NO. _____	DATED _____
ADDENDUM NO. <u>3</u>	DATED <u>11/1/2024</u>	ADDENDUM NO. _____	DATED _____

Number	Description
1	Postponed til October 31, 2024; Amendment EBSx Download Required.
2	Postponed til November 07, 2024; Amendment EBSx Download Required.
3	Revised Table of Contents; Revised NTB No. 5926; Added NTB No. 6469; Revised Bid Items; Revised or Added Plan Sheet Nos. 2-3, 9-17, 21-22, 32-33 & 8001-8003; Amendment EBSx Download Required.

TOTAL ADDENDA: 3
 (Must agree with total addenda issued prior to opening of bids)

Respectfully Submitted,
 DATE _____

 Contractor
 BY _____
 Signature
 TITLE _____
 ADDRESS _____
 CITY, STATE, ZIP _____
 PHONE _____
 FAX _____
 E-MAIL _____

(To be filled in if a corporation)

Our corporation is chartered under the Laws of the State of _____ and the names, titles and business addresses of the executives are as follows:

_____	President	Address
_____	Secretary	Address
_____	Treasurer	Address

The following is my (our) itemized proposal.
 BR-0018-01(026)/ 106109301000 & BR-0018-01(026)/ 106109302000
 Humphreys & Washington County(ies)
 Revised 01/26/2016

MISSISSIPPI DEPARTMENT OF TRANSPORTATION
TABLE OF CONTENTS

PROJECT: BR-0018-01(026)/106109301 - Humphreys
BR-0018-01(026)/106109302 - Washington

Section 901 - Advertisement

Section 904 - Notice to Bidders

#1	Governing Specification, w/ Supplement
#2	Status of ROW, w/ Attachments
#3	Final Cleanup
#113	Tack Coat
#296	Reduced Speed Limit Signs
#445	Mississippi Agent or Qualified Nonresident Agent
#516	Errata and Modifications to the 2017 Standard Specifications
#757	Additional Erosion Control Requirements
#1225	Early Notice to Proceed
#1226	Material Storage Under Bridges
#1241	Fuel and Material Adjustments
#1434	Erosion Control Plan
#1963	Guardrail Pads
#2172	App for Storm Water Reports
#2206	MASH Compliant Devices
#2273	Mississippi Special Fuel Tax Law
#2782	DBE Pre-Bid Meeting
#2954	Reflective Sheeting for Signs
#3676	Asphalt Gyrotory Compactor Internal Angle Calibration
#3713	Fabrication Schedule
#3963	Super Silt Fence
#4113	Unique Entity ID Requirement For Federal Funded Projects
#4638	Storm Water Discharge Associated with Construction Activity (> 5 Acres)
#4699	Right-of-Way Plat
#4702	App for Traffic Control Report
#5086	Detail of Square Tube Sign Posts
#5551	Federal Bridge Formula
#5605	Disadvantaged Business Enterprise In Federal-Aid Highway Construction, w/ Supplement
#5750	Manual on Uniform Traffic Control Devices (MUTCD)
#5925	Contract Time
#5926	Specialty Items
#5927	Placement of Fill Material in Federally Regulated Areas
#5928	Removal of Obstructions
#5930	Corps of Engineers, w/ Attachments
#5931	Restricted Area
#6138	Correction to Pavement Markings
#6195	Retroreflectivity Requirements
#6469	Additional Construction Requirements
906	Required Federal Contract Provisions -- FHWA 1273, w/Supplements

**PROJECT: BR-0018-01(026)/106109301 - Humphreys
BR-0018-01(026)/106109302 - Washington**

Section 907 - Special Provisions

907-101-1	Definitions and Terms
907-102-2	Bidding Requirements and Conditions
907-105-2	Control of Work
907-106-2	Control of Materials
907-107-2	Contractor's Erosion Control Plan
907-108-4	Subletting of Contract
907-109-5	Measurement and Payment
907-234-1	Silt Fence
907-413-2	Cleaning and Sealing Joints and Cracks
907-618-12	Traffic Control Management
907-619-5	Traffic Control for Construction Zones
907-626-11	Thermoplastic Markings
907-627-1	Raised Pavement Markings
907-700-1	Materials and Tests
907-701-3	Hydraulic Cement
907-702-4	Bituminous Materials
907-703-2	Gradation
907-705-1	Stone Riprap
907-707-3	Joint Materials
907-708-4	Concrete Pipe
907-711-2	Plain Steel Wire
907-712-1	Fence and Guardrail
907-713-1	Waterproofing Admixture
907-714-3	Miscellaneous Materials
907-718-1	Timber and Dimension Lumber
907-720-3	Pavement Marking Materials
907-721-4	Materials for Signing
907-803-5	Test Piles, w/ Supplement
907-803-7	Non-Destructive Testing of Drilled Shafts
907-804-11	Concrete Bridges and Structures, w/ Supplement

906-8 Training Special Provisions

Section 905 - Proposal, Proposal Bid Items, Combination Bid Proposal

Certification of Performance - Prior Federal-Aid Contracts

Certification Regarding Non-Collusion, Debarment and Suspension

SAM.GOV Registration and Unique Entity ID

Section 902 - Contract Form

Section 903 - Contract Bond Forms

Form -- OCR-485

Pile and Driving Equipment Data Form

Progress Schedule

(REVISIONS TO THE ABOVE WILL BE INDICATED ON THE SECOND SHEET
OF SECTION 905 AS ADDENDA)

10/16/2024 01:05 PM

MISSISSIPPI DEPARTMENT OF TRANSPORTATION

SECTION 904 - NOTICE TO BIDDERS NO. 5926

DATE: 10/16/2024

SUBJECT: Specialty Items

PROJECT: BR-0018-01(026)/106109301 & BR-0018-01(026)/106109302 - HUMPHREYS & WASHINGTON

Pursuant to the provisions of Section 108, the following work items are hereby designated as "Specialty Items" for this contract. Bidders are reminded that these items must be subcontracted in order to be considered as specialty items.

CATEGORY: EROSION CONTROL

Line No	Pay Item	Description
0150	213-C001	Superphosphate
0160	216-A001	Solid Sodding
0170	217-A001	Ditch Liner
0180	219-A001	Watering
0190	220-A001	Insect Pest Control
0200	221-A001	Concrete Paved Ditch
0210	223-A001	Mowing
0220	224-A001	Soil Reinforcing Mat
0230	225-A001	Grassing
0240	225-B001	Agricultural Limestone
0250	225-C001	Mulch, Vegetative Mulch
0260	226-A001	Temporary Grassing
0270	229-A001	Erosion Mat
0280	237-A002	Wattles, 20"
0290	247-A001	Temporary Stream Diversion
0300	249-A001	Riprap for Erosion Control
0780	907-234-C001	Super Silt Fence

CATEGORY: GUARDRAIL, GUIDERAIL

Line No	Pay Item	Description
0580	606-B001	Guard Rail, Class A, Type 1
0590	606-D022	Guard Rail, Bridge End Section, Type I
0600	606-E001	Guard Rail, Terminal End Section

CATEGORY: MISCELLANEOUS/ SPECIALTY WORK ITEMS

Line No	Pay Item	Description
0440	423-A001	Rumble Strips, Ground In

CATEGORY: PAVEMENT STRIPING AND MARKING

Line No	Pay Item	Description
0820	907-626-C011	6" Thermoplastic Double Drop Edge Stripe, Continuous White
0830	907-626-D004	6" Thermoplastic Double Drop Traffic Stripe, Skip Yellow
0840	907-626-E004	6" Thermoplastic Double Drop Traffic Stripe, Continuous Yellow
0850	907-626-G006	Thermoplastic Double Drop Detail Stripe, White
0860	907-626-H007	Thermoplastic Double Drop Legend, White
0870	907-627-J001	Two-Way Clear Reflective High Performance Raised Markers

0880 907-627-L001 Two-Way Yellow Reflective High Performance Raised Markers

CATEGORY: SURVEY AND STAKING

Line No	Pay Item	Description
0750	699-A001	Roadway Construction Stakes

CATEGORY: TRAFFIC CONTROL - PERMANENT

Line No	Pay Item	Description
0700	630-A001	Standard Roadside Signs, Sheet Aluminum, 0.080" Thickness
0710	630-A003	Standard Roadside Signs, Sheet Aluminum, 0.125" Thickness
0720	630-C005	Square Tube Posts, 2.0 lb/ft
0730	630-F006	Delineators, Guard Rail, White
0740	630-G005	Type 3 Object Markers, OM-3R or OM-3L, Post Mounted
0890	907-630-PP002	Roadside Directional Signs, Sheet Aluminum, 0.125" Thickness, Ground Mounted

CATEGORY: TRAFFIC CONTROL - TEMPORARY

Line No	Pay Item	Description
0622	619-A1002	Temporary Traffic Stripe, Continuous White
0624	619-A2002	Temporary Traffic Stripe, Continuous Yellow
0626	619-A4001	Temporary Traffic Stripe, Skip Yellow
0628	619-A5001	Temporary Traffic Stripe, Detail
0629	619-A6002	Temporary Traffic Stripe, Legend
0630	619-D1001	Standard Roadside Construction Signs, Less than 10 Square Feet
0640	619-D2001	Standard Roadside Construction Signs, 10 Square Feet or More
0650	619-G4001	Barricades, Type III, Double Faced
0660	619-G4005	Barricades, Type III, Single Faced
0670	619-G5001	Free Standing Plastic Drums
0810	907-619-E3001	Changeable Message Sign

MISSISSIPPI DEPARTMENT OF TRANSPORTATION

SECTION 904 - NOTICE TO BIDDERS NO. 6469

CODE: (SP)

DATE: 10/14/2024

SUBJECT: Additional Construction Requirements

**PROJECT: BR-0018-01(026) / 106109301 & BR-0018-01(026) / 106109302
Humphreys & Washington Counties**

Bidders are hereby advised that due to the deterioration of the existing asphalt pavement on the west end of the Sunflower River bridge, remedial action will need to be taken as an initial construction phase. The Contractor shall fine mill both lanes on the west end of the bridge to a depth of 1 ½ inches and a distance of 150 feet from the bridge end and place 1 ½ inches of 9.5-mm, ST, Asphalt Pavement. Temporary stripe and RPM's will also be required.

Bridge Replacement on SR 12 over the Sunflower River (Bridge No. 23.9), known as Federal Aid Project Nos. BR-0018-01(026) / 106109301 & 302 in Humphreys & Washington Counties.

Line No.	Item Code	Adj Code	Quantity	Units	Description [Fixed Unit Price]
Roadway Items					
0010	201-B001		11	Acre	Clearing and Grubbing
0020	202-A001		1	Lump Sum	Removal of Obstructions
0030	202-B004		991	Square Yard	Removal of Asphalt Driveways, All Depths
0040	202-B007		8,276	Square Yard	Removal of Asphalt Pavement, All Depths
0050	202-B019		43	Linear Feet	Removal of Box Culvert
0060	202-B023		1	Each	Removal of Bridge
0070	202-B158		664	Linear Feet	Removal of Guard Rail, Including Rails, Posts and Terminal Ends
0080	202-B191		111	Linear Feet	Removal of Pipe, 8" And Above
0090	203-A001	(E)	7,719	Cubic Yard	Unclassified Excavation, FM, AH
0100	203-EX020	(E)	87,887	Cubic Yard	Borrow Excavation, AH, FME, Class B9
0110	203-G001	(E)	12,126	Cubic Yard	Excess Excavation, FM, AH
0120	206-A001	(S)	253	Cubic Yard	Structure Excavation
0130	206-B001	(E)	26	Cubic Yard	Select Material for Undercuts, Contractor Furnished, FM
0140	209-A005		5,488	Square Yard	Geotextile Stabilization, Type V, Non-Woven
0150	213-C001		13	Ton	Superphosphate
0160	216-A001		214	Square Yard	Solid Sodding
0170	217-A001		779	Square Yard	Ditch Liner
0180	219-A001		5	Thousand Gallon	Watering [\$20.00]
0190	220-A001		27	Acre	Insect Pest Control [\$30.00]
0200	221-A001	(S)	2	Cubic Yard	Concrete Paved Ditch
0210	223-A001		52	Acre	Mowing [\$50.00]
0220	224-A001		223	Square Yard	Soil Reinforcing Mat
0230	225-A001		27	Acre	Grassing
0240	225-B001		52	Ton	Agricultural Limestone
0250	225-C001		52	Ton	Mulch, Vegetative Mulch
0260	226-A001		27	Acre	Temporary Grassing
0270	229-A001		200	Square Yard	Erosion Mat
0280	237-A002		500	Linear Feet	Wattles, 20"
0290	247-A001		1	Each	Temporary Stream Diversion
0300	249-A001		500	Ton	Riprap for Erosion Control
0310	304-D002	(GT)	95	Ton	Granular Material, Crushed Stone
0320	307-C004	(M)	9,277	Square Yard	6" Soil-Lime-Water Mixing, Class C

Line No.	Item Code	Adj Code	Quantity	Units	Description [Fixed Unit Price]
0330	307-D001		125	Ton	Lime
0340	307-S001	(A3)	2,320	Gallon	Bituminous Curing Seal
0350	308-A001		84	Ton	Cement
0360	308-B003	(M)	9,277	Square Yard	Soil-Cement-Water Mixing, Optional Mixers, Design Soil
0370	308-S001	(A3)	2,320	Gallon	Bituminous Curing Seal
0380	403-A003	(BA1)	1,486	Ton	12.5-mm, ST, Asphalt Pavement
0390	403-A006	(BA1)	4,082	Ton	19-mm, ST, Asphalt Pavement
0400	403-A015	(BA1)	1,826	Ton	9.5-mm, ST, Asphalt Pavement
0410	403-C003	(BA1)	65	Ton	19-mm, ST, Asphalt Pavement, Trench Widening
0420	406-D001		3,122	Square Yard	Fine Milling of Bituminous Pavement, All Depths
0430	407-A001	(A2)	2,624	Gallon	Asphalt for Tack Coat
0440	423-A001		2	Mile	Rumble Strips, Ground In
0450	502-A001	(C)	186	Square Yard	Reinforced Cement Concrete Bridge End Pavement
0460	601-A001	(S)	94	Cubic Yard	Class "B" Structural Concrete
0470	601-B001	(S)	2	Cubic Yard	Class "B" Structural Concrete, Minor Structures
0480	602-A001	(S)	15,390	Pounds	Reinforcing Steel
0490	603-CA011	(S)	256	Linear Feet	18" Reinforced Concrete Pipe, Class III
0500	603-CA026	(S)	120	Linear Feet	24" Reinforced Concrete Pipe, Class III
0510	603-CB004	(S)	2	Each	24" Reinforced Concrete End Section
0520	603-CE008	(S)	56	Linear Feet	29" x 18" Concrete Arch Pipe, Class A III
0530	603-CF003	(S)	2	Each	29" x 18" Concrete Arch Pipe End Section
0540	605-AA001	(S)	50	Square Yard	Geotextile for Subsurface Drainage, Type III
0550	605-T001	(S)	90	Linear Feet	4" Perforated Pipe for Underdrains
0560	605-U001	(S)	10	Linear Feet	4" Non-perforated Pipe for Underdrains
0570	605-W001	(GY)	4	Cubic Yard	Filter Material for Combination Storm Drain and/or Underdrains, Type A, FM
0580	606-B001		250	Linear Feet	Guard Rail, Class A, Type 1
0590	606-D022		4	Each	Guard Rail, Bridge End Section, Type I
0600	606-E001		4	Each	Guard Rail, Terminal End Section
0612	615-A004	(S)	40	Linear Feet	Concrete Bridge End Barrier, 43.5"
0620	617-A001		46	Each	Right-of-Way Marker
0622	619-A1002		20,086	Linear Feet	Temporary Traffic Stripe, Continuous White
0624	619-A2002		13,709	Linear Feet	Temporary Traffic Stripe, Continuous Yellow
0626	619-A4001		5,276	Linear Feet	Temporary Traffic Stripe, Skip Yellow
0628	619-A5001		2,971	Linear Feet	Temporary Traffic Stripe, Detail

Line No.	Item Code	Adj Code	Quantity	Units	Description [Fixed Unit Price]
0629	619-A6002		1,202	Linear Feet	Temporary Traffic Stripe, Legend
0630	619-D1001		48	Square Feet	Standard Roadside Construction Signs, Less than 10 Square Feet
0640	619-D2001		698	Square Feet	Standard Roadside Construction Signs, 10 Square Feet or More
0650	619-G4001		72	Linear Feet	Barricades, Type III, Double Faced
0660	619-G4005		192	Linear Feet	Barricades, Type III, Single Faced
0670	619-G5001		98	Each	Free Standing Plastic Drums
0680	620-A001		1	Lump Sum	Mobilization
0690	622-B001		1	Each	Engineer's Field Office Building, Type 2 LO
0700	630-A001		40	Square Feet	Standard Roadside Signs, Sheet Aluminum, 0.080" Thickness
0710	630-A003		54	Square Feet	Standard Roadside Signs, Sheet Aluminum, 0.125" Thickness
0720	630-C005		198	Linear Feet	Square Tube Posts, 2.0 lb/ft
0730	630-F006		18	Each	Delineators, Guard Rail, White
0740	630-G005		8	Each	Type 3 Object Markers, OM-3R or OM-3L, Post Mounted
0750	699-A001		1	Lump Sum	Roadway Construction Stakes
0760	815-A007	(S)	80	Ton	Loose Riprap, Size 300
0770	815-E001	(S)	54	Square Yard	Geotextile under Riprap
0780	907-234-C001		10,550	Linear Feet	Super Silt Fence
0790	907-413-E001		90	Linear Feet	Sawing and Sealing Transverse Joints in Asphalt Pavement
0800	907-618-A001		1	Lump Sum	Maintenance of Traffic
0810	907-619-E3001		4	Each	Changeable Message Sign
0820	907-626-C011		11,087	Linear Feet	6" Thermoplastic Double Drop Edge Stripe, Continuous White
0830	907-626-D004		5,276	Linear Feet	6" Thermoplastic Double Drop Traffic Stripe, Skip Yellow
0840	907-626-E004		4,709	Linear Feet	6" Thermoplastic Double Drop Traffic Stripe, Continuous Yellow
0850	907-626-G006		2,771	Linear Feet	Thermoplastic Double Drop Detail Stripe, White
0860	907-626-H007		801	Linear Feet	Thermoplastic Double Drop Legend, White
0870	907-627-J001		144	Each	Two-Way Clear Reflective High Performance Raised Markers
0880	907-627-L001		101	Each	Two-Way Yellow Reflective High Performance Raised Markers
0890	907-630-PP002		34	Square Feet	Roadside Directional Signs, Sheet Aluminum, 0.125" Thickness, Ground Mounted
0900	907-906001		1,040	Hours	Trainees [\$5.00]
ALTERNATE GROUP AA NUMBER 1					
0910	304-F001	(GT)	13,970	Ton	3/4" and Down Crushed Stone Base
ALTERNATE GROUP AA NUMBER 2					
0920	304-F002	(GT)	13,970	Ton	Size 610 Crushed Stone Base
ALTERNATE GROUP AA NUMBER 3					

Line No.	Item Code	Adj Code	Quantity	Units	Description [Fixed Unit Price]
0930	304-F003	(GT)	13,970	Ton	Size 825B Crushed Stone Base
ALTERNATE GROUP BB NUMBER 1					
0940	605-W002	(GY)	56	Cubic Yard	Filter Material for Combination Storm Drain and/or Underdrains, Type B, FM
ALTERNATE GROUP BB NUMBER 2					
0950	605-W003	(GY)	56	Cubic Yard	Filter Material for Combination Storm Drain and/or Underdrains, Type C, FM
Bridge Items					
0960	501-K001		3,638	Square Yard	Transverse Grooving
0970	803-K014	(S)	900	Linear Feet	Drilled Shaft, 84" Diameter
0980	803-L009	(S)	1	Each	Test Shaft, 84" Diameter
0990	803-M012	(S)	145	Linear Feet	Trial Shaft, 84" Diameter
1000	803-N001	(S)	90	Linear Feet	Exploration
1008	803-O013	(S)	300	Linear Feet	Permanent Casing, 84" Diameter
1020	803-P008	(S)	2,720	Linear Feet	20" Steel Pipe Piling, Wall Thickness 0.500"
1030	805-A001	(S)	383,522	Pounds	Reinforcement
1040	810-A007	(S)	2,321,681	Pounds	Structural Steel, A 709, Grade 50W
1050	810-A008	(S)	338,644	Pounds	Structural Steel, A 709, Grade HPS 70W
1060	811-D001	(S)	16	Each	Disc Bearing Device
1070	813-A003	(S)	1,819	Linear Feet	Concrete Railing, 42"
1080	815-A007	(S)	3,750	Ton	Loose Riprap, Size 300
1090	815-E001	(S)	2,160	Square Yard	Geotextile under Riprap
1100	907-803-B001	(S)	1	Each	Conventional Static Pile Load Test [\$5,000.00]
1110	907-803-I004	(S)	4	Each	PDA Test Pile, Steel Pipe Pile
1120	907-803-J001	(S)	4	Each	Pile Restrike
1130	907-804-A002	(S)	509	Cubic Yard	Bridge Concrete, Class AA
1140	907-804-A004	(S)	1,153	Cubic Yard	Bridge Concrete, Class BD
1150	907-822-PP004		83	Linear Feet	7" Segmental Expansion Joint

ADDENDUM

DESCRIPTION OF SHEET

TITLE SHEET, DETAILED INDEX, AND GENERAL NOTES - (5)
 TITLE SHEET
 DETAILED INDEX
 DETAILED INDEX
 GENERAL NOTES
 GENERAL NOTES
 TYPICAL SECTIONS - (3)
 TYPICAL SECTIONS - SR 12 MAINLINE NEW CONSTRUCTION AND WIDENING & OVERLAY
 TYPICAL SECTIONS - LOCAL ROADS NEW CONSTRUCTION AND WIDENING & OVERLAY
 TYPICAL SECTIONS - SR 12 MAINLINE TRANSITION AND EMBANKMENT REMOVAL

QUANTITY SHEETS - (17)
 SUMMARY OF QUANTITIES - HUMPHREYS CO.
 SUMMARY OF QUANTITIES - HUMPHREYS CO.
 SUMMARY OF QUANTITIES - HUMPHREYS CO.
 SUMMARY OF QUANTITIES - WASHINGTON CO.
 SUMMARY OF QUANTITIES - WASHINGTON CO.
 SUMMARY OF QUANTITIES - WASHINGTON CO.
 SUMMARY OF QUANTITIES - TOTAL
 SUMMARY OF QUANTITIES - TOTAL
 SUMMARY OF QUANTITIES - TOTAL
 ESTIMATED QUANTITIES - REMOVAL ITEMS
 ESTIMATED QUANTITIES - BOX CULVERTS, SIDE DRAINS, AND EROSION CONTROL
 ESTIMATED QUANTITIES - DRAINAGE STRUCTURES
 ESTIMATED QUANTITIES - TRAFFIC CONTROL ITEMS
 ESTIMATED QUANTITIES - PAVEMENT MARKINGS AND DRIVEWAYS REQUIRED
 ESTIMATED QUANTITIES - BRIDGE END PAVEMENT, EARTHWORK, AND GUARDRAIL REQUIRED
 ESTIMATED QUANTITIES - PERMANENT SIGN ASSEMBLIES AND STANDARD ROADSIDE SIGNS
 ESTIMATED QUANTITIES - TRAFFIC CONTROL SIGNS
 PLAN & PROFILE SHEETS - (5)
 MAINLINE - SR 12 - WASHINGTON CO. - STA. 488+00 TO STA. 517+00
 LOCAL ROAD - SUNFLOWER RIVER ROAD - WASHINGTON CO. - STA. 11+00 TO STA. 23+50
 MAINLINE - SR 12 - HUMPHREYS CO. - STA. 517+00 TO 541+50
 LOCAL ROAD - RIVER ROAD - HUMPHREYS CO. - STA. 8+00 TO STA. 11+33.846
 LOCAL ROAD - COLE LAKE ROAD - HUMPHREYS CO. - STA. 0+00 TO STA. 2+91.72

SPECIAL DESIGN SHEETS - ROADWAY DRAWINGS (26)
 RIGHT-OF-WAY MARKERS
 BRIDGE END PAVEMENT WITH RAIL, OVERLAY, AND SLEEPER SLAB
 43.5" BRIDGE END PAVEMENT RAIL
 MISCELLANEOUS TYPICAL SECTION DETAILS
 SIGN SUPPORT HARDWARE - 2.0" SQUARE POST
 INTERSECTION DETAIL - SR 12 MAINLINE & SUNFLOWER RIVER ROAD
 INTERSECTION DETAIL - SR 12 MAINLINE, COLE LAKE ROAD, & RIVER ROAD
 PRELIMINARY EROSION CONTROL PLAN - SR 12 MAINLINE - WASHINGTON CO. - STA. 488+00 TO STA. 517+00
 PRELIMINARY EROSION CONTROL PLAN - RIPARIAN BUFFER
 PRELIMINARY EROSION CONTROL PLAN - SUNFLOWER RIVER ROAD - WASHINGTON CO. - STA. 11+00 TO STA. 23+50
 PRELIMINARY EROSION CONTROL PLAN - SR 12 MAINLINE - HUMPHREYS CO. - STA. 517+00 TO STA. 541+50
 PRELIMINARY EROSION CONTROL PLAN - RIVER ROAD - HUMPHREYS CO. - STA. 8+00 TO STA. 11+33.846
 PRELIMINARY EROSION CONTROL PLAN - COLE LAKE ROAD - HUMPHREYS CO. - STA. 0+00 TO STA. 2+91.72
 DETAIL OF CONSTRUCTION SIGNING - SR 12 MAINLINE & SUNFLOWER RIVER ROAD - WASHINGTON CO.
 DETAIL OF CONSTRUCTION SIGNING - SR 12 MAINLINE, COLE LAKE ROAD, & RIVER ROAD - HUMPHREYS CO.
 DETAIL OF CONSTRUCTION SIGNING - LOCAL ROAD CLOSURE - CMS BOARD DETAIL
 TRAFFIC CONTROL PLAN - SR 12 MAINLINE - WASHINGTON CO. - PHASE I
 TRAFFIC CONTROL PLAN - SR 12 MAINLINE, COLE LAKE ROAD, & RIVER ROAD - HUMPHREYS CO. - PHASE I
 TRAFFIC CONTROL PLAN - SR 12 MAINLINE & SUNFLOWER RIVER ROAD - WASHINGTON CO. - PHASE I
 TRAFFIC CONTROL PLAN - SR 12 MAINLINE - WASHINGTON CO. - PHASE II
 TRAFFIC CONTROL PLAN - SR 12 MAINLINE, COLE LAKE ROAD, & RIVER ROAD - HUMPHREYS CO. - PHASE II
 TRAFFIC CONTROL PLAN - SR 12 MAINLINE & SUNFLOWER RIVER ROAD - WASHINGTON CO. - PHASE II

WKG. NO.

DESCRIPTION OF SHEET

SH. NO.

PAVEMENT MARKING DETAIL - SR 12 MAINLINE (BOP - STA. 507+00)
 PAVEMENT MARKING DETAIL - SR 12 MAINLINE (521+00 - EOP), COLE LAKE ROAD, & RIVER ROAD INTERSECTION
 PAVEMENT MARKING DETAIL - SR 12 MAINLINE & SUNFLOWER RIVER ROAD INTERSECTION
 VEGETATION SCHEDULE - DISTRICT 3 - ALL TYPE PROJECTS - MS DELTA
 PERMANENT SIGNING PLANS - (3)
 PERMANENT SIGNING PLAN - SR 12 MAINLINE
 PERMANENT SIGNING PLAN - SR 12 MAINLINE, COLE LAKE ROAD, & RIVER ROAD
 PERMANENT SIGNING PLAN - SR 12 MAINLINE & SUNFLOWER RIVER ROAD
 STANDARD DRAWINGS - ROADWAY DESIGN SHEETS (2017) - (65)

PAVEMENT MARKING DETAILS FOR 2-LANE & 4-LANE DIVIDED ROADWAYS
 2-WAY RAISED PAVEMENT MARKERS AT INTERSECTING ROADS (2-LANE)
 RUMBLE STRIPES 2-LANE HIGHWAYS (ASPHALT LANES, 2-FT ASPHALT SHOULDERS)
 TYPICAL TEMPORARY EROSION CONTROL/SEDIMENT CONTROL APPLICATIONS
 DETAILS OF SEDIMENT BARRIER APPLICATIONS
 DETAILS OF SILT FENCE INSTALLATION
 DITCH CHECK STRUCTURES, TYPICAL APPLICATIONS AND DETAILS
 TEMPORARY EROSION, SEDIMENT, AND WATER POLLUTION CONTROL MEASURES (SILT FENCE AND HAY BALE DITCH CHECKS)
 DETAILS OF EROSION CONTROL WATTLE DITCH CHECK
 DETAILS OF EROSION CONTROL SILT DIKE DITCH CHECK
 ROCK DITCH CHECK
 ROCK FILTER DAM
 ROCK DITCH CHECK WITH SUMP EXCAVATION AND ROCK FILTER DAM
 TYPICAL APPLICATIONS AND DETAILS FOR INLET CONSTRUCTION
 INLET PROTECTION DETAILS FOR SEDIMENT CONTROL STONE ON GRADES AND SAGS
 INLET PROTECTION DETAILS OF WATTLES
 INLET PROTECTION DETAILS OF MANUFACTURED INLET PROTECTION DEVICE
 INLET PROTECTION DETAILS OF SANDBAGS
 STABILIZED CONSTRUCTION ENTRANCE
 TEMPORARY CULVERT STREAM CROSSING
 TEMPORARY STREAM DIVERSION
 TEMPORARY STREAM DIVERSION (BOX EXTENSIONS)
 FLOATING TURBIDITY CURTAIN
 DETAILS OF EROSION CONTROL SANDBAG DITCH CHECK
 SEDIMENT RETENTION BARRIER
 DETAILS OF TYPICAL DITCH TREATMENTS
 DITCH TREATMENT INSTALLATION DETAIL FOR SOIL REINFORCING MAT
 GUARDRAIL: "W" BEAM (STEEL POSTS)
 GUARDRAIL: BRIDGE END SECTION-TYPE "I" (STEEL POSTS) (NEW CONSTRUCTION)
 GUARDRAIL: TYPICAL INSTALLATION AT BRIDGE APPROACHES FOR 2-LANE, 2-WAY HIGHWAY
 GUARDRAIL: MISCELLANEOUS HARDWARE
 STANDARD ROADSIDE SIGNS
 STANDARD ROADSIDE SIGNS
 STANDARD ROADSIDE SIGN ASSEMBLY AND INSTALLATION
 STANDARD ROADSIDE SIGN ASSEMBLY AND INSTALLATION
 BREAKAWAY SIGN SUPPORTS
 BREAKAWAY SIGN SUPPORTS
 BREAKAWAY SIGN SUPPORTS
 TYPICAL INSTALLATION AND DETAILS OF DELINEATORS AND DISTANCE REFERENCE SIGNS
 SIGNING DETAILS FOR BRIDGE APPROACHES

RCS-1
 BEPR-SS
 BEPR-IC
 MTSO-1
 TSS-2
 ID-1
 ID-2
 ECP-3
 ECP-RB-3
 ECP-3A
 ECP-4
 ECP-4A
 ECP-4B
 DCS-1
 DCS-2
 DCS-3
 TC-1
 TC-2
 TC-3
 TC-4
 TC-5
 TC-6

PMD-1 53
 PMD-2 54
 PMD-3 55
 VS-1 56

PW-1 6051
 PW-11 6061
 RS-1 6064
 ECD-1 6101
 ECD-2 6102
 ECD-3 6103
 ECD-4 6104
 ECD-5 6105
 ECD-6 6106
 ECD-7 6107
 ECD-8 6108
 ECD-9 6109
 ECD-10 6110
 ECD-11 6111
 ECD-12 6112
 ECD-13 6113
 ECD-14 6114
 ECD-15 6115
 ECD-16 6116
 ECD-17 6117
 ECD-18 6118
 ECD-19 6119
 ECD-20 6120
 ECD-21 6121
 ECD-22 6122
 DT-1 6123
 DT-1A 6124
 GR-1B 6203
 GR-2G 6211
 GR-4A 6215
 GR-HW 6221
 SN-3A 6304
 SN-3B 6305
 SN-4 6306
 SN-4A 6307
 SN-6 6310
 SN-6A 6311
 SN-6B 6312
 SN-8 6314
 SN-8C 6317
 SN-9 6318

WKG. NO.

SH. NO.

PMD-1 53
 PMD-2 54
 PMD-3 55
 VS-1 56

PW-1 6051
 PW-11 6061
 RS-1 6064
 ECD-1 6101
 ECD-2 6102
 ECD-3 6103
 ECD-4 6104
 ECD-5 6105
 ECD-6 6106
 ECD-7 6107
 ECD-8 6108
 ECD-9 6109
 ECD-10 6110
 ECD-11 6111
 ECD-12 6112
 ECD-13 6113
 ECD-14 6114
 ECD-15 6115
 ECD-16 6116
 ECD-17 6117
 ECD-18 6118
 ECD-19 6119
 ECD-20 6120
 ECD-21 6121
 ECD-22 6122
 DT-1 6123
 DT-1A 6124
 GR-1B 6203
 GR-2G 6211
 GR-4A 6215
 GR-HW 6221
 SN-3A 6304
 SN-3B 6305
 SN-4 6306
 SN-4A 6307
 SN-6 6310
 SN-6A 6311
 SN-6B 6312
 SN-8 6314
 SN-8C 6317
 SN-9 6318

STATE	PROJECT NO.
MISS.	BR-0018-01(026)

**MISSISSIPPI DEPARTMENT OF TRANSPORTATION
DETAILED INDEX**

10/16/24	LWM	ADDED AN EXTRA SQ SHEET
10/17/24	LWM	SMARPEO STANDARD FOR SPECIAL DESIGN
10/17/24	LWM	ADDED A STANDARD DRAINING
	BY	REVISION

PS & E PLANS-DATE: 9/18/2024	
FMS CON. # 106109/301000&302000	
REVISIONS	
DATE	SHEET NO.
10/7/24	2-3, 9-16
10/16/24	2-3, 9-17, 21-22, 30-33
10/18/24	32, 33
	SR

WIENTJES

FILE NAME: D:\gdn	CHECKED	DATE
DESIGN TEAM	WIENTJES	
PROJECT NO.: BR-0018-01(026)	COUNTY: WASHINGTON/HUMPHREYS	
WORKING NUMBER	DI-1	SHEET NUMBER
		2

ADDENDUM

DESCRIPTION OF SHEET

TRAFFIC CONTROL PLAN WITH FLAGGER (ONE-LANE CLOSURE OF TWO-WAY TRAFFIC)
SHORT DURATION CLOSING OF TWO-LANE TWO-WAY HIGHWAYS
HIGHWAY SIGN AND BARRICADE DETAILS FOR CONSTRUCTION PROJECTS
TRAFFIC CONTROL PLAN MOBILE OPERATIONS MULTILANE ROADS AND TWO-LANE ROADS
TRAFFIC CONTROL PLAN: UNEVEN PAVEMENT DETAILS
TEMPORARY STRIPING FOR TRAFFIC CONTROL 2-LANE AND 4-LANE DIVIDED HIGHWAYS
LOCATION OF R16-3 SIGNS (SPEEDING FINES DOUBLED)
TRAFFIC CONTROL DETAILS DRUM PLACEMENT AND SHOULDER CLOSURE
PERMANENT BARRICADE WITH BERM
RIGHT-OF-WAY MARKER
RURAL DRIVEWAYS
TYPICAL GRADING TRANSITION BETWEEN CUTS & FILLS
SLIGHT FLARE
SUPERELEVATION - CASE I (ROTATION ABOUT CENTERLINE)
SUPERELEVATION RUNOFF - CASE I (ROTATION ABOUT THE CENTERLINE)
MISCELLANEOUS DETAIL SHEET I. STACKED PIPE JOINTS 2. EXCAVATION AT GRADE POINTS
TYPICAL PLANTING DETAILS FOR TREES & SHRUBS
PIPE CULVERT INSTALLATION
FLARED END SECTION FOR CONCRETE PIPE
FLARED END SECTION FOR CONCRETE ARCH PIPE
DETAILS OF NORMAL UNDERDRAIN AND STORM DRAIN USED AS UNDERDRAIN
NORMAL UNDERDRAIN TYPE II
PRECAST CONCRETE BOX CULVERT
PRECAST CONCRETE BOX CULVERT END SECTION

STANDARD DRAWINGS - BRIDGE SHEETS - (7)

BASIC CULVERT DRAWING - COLLAR LOCATIONS - NORMAL AND SKEWED CULVERTS GROUP I DIAGRAMS
COLLAR DETAILS FOR BOX STRUCTURES
BARREL DETAILS - SINGLE CELL - HEIGHT 6 FT. - SPANS 6 - 20 FT. - SHEET 1 OF 3
BARREL DETAILS - SINGLE CELL - HEIGHT 6 FT. - SPANS 6 - 20 FT. - SHEET 2 OF 3
BARREL DETAILS - SINGLE CELL - HEIGHT 6 FT. - SPANS 6 - 20 FT. - SHEET 3 OF 3
WINGS WITH 3:1 SLOPE FOR BASIC CULVERT DRAWING - SINGLE CELL - 0° SKEW DETAILS
- HEIGHTS 6 FT. - SPANS 6 - 20 FT. - SHEET 1 OF 2
WINGS WITH 3:1 SLOPE FOR BASIC CULVERT DRAWING - SINGLE CELL - 0° SKEW DETAILS
- HEIGHTS 6 FT. - SPANS 6 - 20 FT. - SHEET 2 OF 2

SPECIAL DESIGN BRIDGE SHEETS - SEE BRIDGE SHEETS BEGINNING ON 8001

CROSS SECTIONS - (83)

STA. 488+00 TO STA. 493+25.891 (EX. SR 12 MAINLINE - BOP)
STA. 493+25.891 TO STA. 538+01.118 (SR 12 MAINLINE, PHASE I)
STA. 493+25.891 TO STA. 538+01.118 (SR 12 MAINLINE, PHASE II)
STA. 538+01.118 TO STA. 541+50 (EX. SR 12 MAINLINE - EOP)
STA. 10+00 TO STA. 24+77.813 (SUNFLOWER RIVER ROAD)
STA. 8+00 TO STA. 11+33.846 (RIVER ROAD)
STA. 0+00 TO STA. 2+91.72 (COLE LAKE ROAD)
STA. 500+00 TO STA. 526+25 (EX. SR 12 REMOVAL)

TOTAL SHEETS (NOT INCLUDING BRIDGE SHEETS) - (214) 

WKG. NO.

SH. NO.

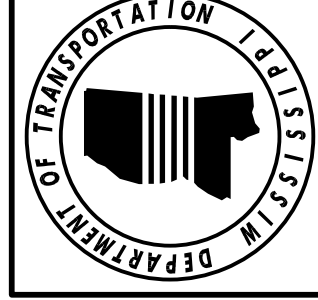
TCP-1 6351
TCP-6 6356
TCP-8 6358
TCP-9 6359
TCP-12 6362
TCP-13 6363
TCP-15 6365
TCP-16 6366
TCP-17 6367
RW-1 6401
RD-1 6403
GT-1 6404
SF-1 6405
SE-2A 6408
SE-3A 6413
MDS-1 6425
PD-1 6428
PI-1 6501
FE-1 6530
FE-1A 6531
UD-1 6533
UD-2 6534
PBC-1 6538
PBC-2 6539

IBJL-1 7005
ICJ-1 7008
IBS-6 7011
IBS-6 7012
IBS-6 7013
IWS-6-3W 7033
IWS-6-3W 7034

9001-9004
9005-9031
9032-9057
9058-9059
9060-9066
9067-9068
9069-9070
9071-9083

BY	DATE	REVISION
LW		UPDATED SHEET NUMBER TOTALS

MISSISSIPPI DEPARTMENT OF TRANSPORTATION
DETAILED INDEX




PROJ. NO.: BR-0018-01(026)
COUNTY: WASHINGTON/HUMPHREYS
WORKING NUMBER
DI-2
SHEET NUMBER
3
FILE NAME: D:\LGD
DESIGN TEAM: WENTJES
CHECKED: _____
DATE: _____

ADDENDUM

SUMMARY OF QUANTITIES (SHEET 1)

PAY ITEM NO.	PAY ITEM	UNIT	HUMPHREYS : 106109-301000	
			Prelim	Final
201-B001	Clearing and Grubbing	ACRE	3	1
202-A001	Removal of Obstructions	LS	1	1
202-B004	Removal of Asphalt Driveways, All Depths	SY	991	991
202-B007	Removal of Asphalt Pavement, All Depths	SY	1,961	1,961
202-B023	Removal of Bridge	EA	1	1
202-B158	Removal of Guard Rail, Including Rails, Posts and Terminal Ends	LF	332	332
202-B191	Removal of Pipe, 8" And Above	LF	111	111
203-A001	Unclassified Excavation, FM, AH	CY	3,039	3,039
203-EX020	Borrow Excavation, AH, FME, Class B9	CY	24,547	24,547
203-G001	Excess Excavation, FM, AH	CY	1,052	1,052
206-A001	Structure Excavation	CY	60	60
209-A005	Geotextile Stabilization, Type V, Non-Woven	SY	1,968	1,968
213-C001	Superphosphate	TON	3	3
216-A001	Solid Sodding	SY	46	46
217-A001	Ditch Liner	SY	45	45
219-A001	Watering	KGAL	1	1
220-A001	Insect Pest Control	ACRE	6	6
221-A001	Concrete Paved Ditch	CY	1	1
223-A001	Mowing	ACRE	11	11
225-A001	Grassing	ACRE	6	6
225-B001	Agricultural Limestone	TON	11	11
225-C001	Mulch, Vegetative Mulch	TON	11	11
226-A001	Temporary Grassing	ACRE	6	6
229-A001	Erosion Mat	SY	100	100
907-234-C001	Super Silt Fence	LF	3,400	3,400
237-A002	Wattles, 20"	LF	250	250
249-A001	Riprap for Erosion Control	TON	250	250
304-D002	Granular Material, Crushed Stone	TON	15	15
304-F001	3/4" and Down Crushed Stone Base	TON	5,121	5,121
304-F002	OR Size 610 Crushed Stone Base	TON	5,121	5,121
304-F003	OR Size 825B Crushed Stone Base	TON	5,121	5,121
307-C004	6" Soil-Lime-Water Mixing, Class C	SY	3,502	3,502
307-D001	Lime	TON	47	47
307-S001	Bituminous Curing Seal	GAL	876	876
308-A001	Cement	TON	32	32
308-B003	Soil-Cement-Water Mixing, Optional Mixers, Design Soil	SY	3,502	3,502
308-S001	Bituminous Curing Seal	GAL	876	876
403-A003	12.5-mm, ST, Asphalt Pavement	TON	553	553
403-A006	19-mm, ST, Asphalt Pavement	TON	1,518	1,518
403-A015	9.5-mm, ST, Asphalt Pavement	TON	666	666
403-C003	19-mm, ST, Asphalt Pavement, Trench Widening	TON	26	26
406-D001	Fine Milling of Bituminous Pavement, All Depths	SY	1,086	1,086

- 1 INCLUDES, BUT NOT LIMITED TO, APRONS, PARAPETS, FENCE, CONCRETE FOOTINGS, AND/OR OTHER UNDERGROUND OBSTRUCTIONS.
- 2 BRIDGE NO. 23.9 @ STA. 520+00 OVER SUNFLOWER RIVER. 6 SPANS (1 @ 80', 2 @ 151', 1 @ 68', 2 @ 60'.
- 3 INCLUDES REMOVAL OF BRIDGE END SECTION, TERMINAL END SECTION, RAIL, POSTS, BLOCK OUTS, HARDWARE, ETC. (AS MEASURED FROM BEGINNING OF BRIDGE END SECTION TO END OF TERMINAL END SECTION) AND OBJECT MARKERS. DOES NOT INCLUDE ABANDONED UTILITY LINES.
- 4 INCLUDES A 20% INCREASE FROM CALCULATED QUANTITY.
- 5 INCLUDES 4 TONS FOR DRIVEWAYS. (HUMPHREYS CO.)
- 6 INCLUDES 3 TONS FOR DRIVEWAYS. (HUMPHREYS CO.) FOR TREATMENT OF SUBGRADE.
- 7 QUANTITY TO BE USED FOR DRIVEWAYS. (SEE EQ-5)
- 8 INCLUDES 657 CY TO BE USED TO HELP MAINTAIN LOCAL ROAD TRAFFIC DURING CONSTRUCTION.
- 9 INCLUDES A 25% INCREASE FROM CALCULATED QUANTITY.
- 10 REMOVAL OF SHACKS AND FOOTINGS IN THE AREA.
- 11 WETLANDS ON SITE.

MISSISSIPPI DEPARTMENT OF TRANSPORTATION	
SUMMARY OF QUANTITIES	
	Working Number SQ-1
PROJ NO: BR-0018-01(026) COUNTY: HUMPHREYS	
Revision	Date
FILENAME: 106109-301-302-SQS-ADD Design Team: WJENDES Checked: _____	
Sheet Number 9	Date

ADDENDUM


STATE	PROJECT NO.
MISS	BR-0018-01(026)

SUMMARY OF QUANTITIES (SHEET 2)

PAY ITEM NO.	PAY ITEM	UNIT	HUMPHREYS : 106109-301000	
			Prelim	Final
407-A001	Asphalt for Tack Coat	GAL	977	
907-413-E001	Sawing and Sealing Transverse Joints in Asphalt Pavement	LF	45	
423-A001	Rumble Strips, Ground In	MI	1	
502-A001	Reinforced Cement Concrete Bridge End Pavement	SY	93	
601-B001	Class "B" Structural Concrete, Minor Structures	CY	1	
603-CA011	18" Reinforced Concrete Pipe, Class III	LF	88	
603-CA026	24" Reinforced Concrete Pipe, Class III	LF	120	
603-CB004	24" Reinforced Concrete End Section	EA	2	
605-AA001	Geotextile for Subsurface Drainage, Type III	SY	25	
605-T001	4" Perforated Pipe for Underdrains	LF	45	
605-U001	4" Non-perforated Pipe for Underdrains	LF	5	
605-W001	Filter Material for Combination Storm Drain and/or Underdrains, Type A, FM	CY	2	
605-W002	Filter Material for Combination Storm Drain and/or Underdrains, Type B, FM	CY	28	
	OR			
605-W003	Filter Material for Combination Storm Drain and/or Underdrains, Type C, FM	CY	28	
606-B001	Guard Rail, Class A, Type 1	LF	125	
606-D022	Guard Rail, Bridge End Section, Type I	EA	2	
606-E001	Guard Rail, Terminal End Section	EA	2	
615-A004	Concrete Bridge End Barrier, 43.5"	LF	20	
617-A001	Right-of-Way Marker	EA	23	
907-618-A001	Maintenance of Traffic	LS	1	
619-A1002	Temporary Traffic Stripe, Continuous White	LF	6,733	
619-A2002	Temporary Traffic Stripe, Continuous Yellow	LF	4,955	
619-A4001	Temporary Traffic Stripe, Skip Yellow	LF	1,966	
619-A5001	Temporary Traffic Stripe, Detail	LF	1,432	
619-A6002	Temporary Traffic Stripe, Legend	LF	600	
619-D1001	Standard Roadside Construction Signs, Less than 10 Square Feet	SF	24	
619-D2001	Standard Roadside Construction Signs, 10 Square Feet or More	SF	338	
907-619-E3001	Changeable Message Sign	EA	2	
619-G4001	Barricades, Type III, Double Faced	LF	36	
619-G4005	Barricades, Type III, Single Faced	LF	72	
619-G5001	Free Standing Plastic Drums	EA	34	
620-A001	Mobilization	LS	1	
907-626-C011	6" Thermoplastic Double Drop Edge Stripe, Continuous White	LF	3,534	
907-626-D004	6" Thermoplastic Double Drop Traffic Stripe, Skip Yellow	LF	1,966	
907-626-E004	6" Thermoplastic Double Drop Traffic Stripe, Continuous Yellow	LF	1,755	
907-626-G006	Thermoplastic Double Drop Detail Stripe, White	LF	1,432	
907-626-H007	Thermoplastic Double Drop Legend, White	LF	400	
907-627-J001	Two-Way Clear Reflective High Performance Raised Markers	EA	75	
907-627-L001	Two-Way Yellow Reflective High Performance Raised Markers	EA	44	
630-A001	Standard Roadside Signs, Sheet Aluminum, 0.080" Thickness	SF	20	
630-A003	Standard Roadside Signs, Sheet Aluminum, 0.125" Thickness	SF	27	
630-C005	Square Tube Posts, 2.0 lb/ft	LF	99	
630-F006	Delineators, Guard Rail, White	EA	9	

- ① INCLUDES 876 LF FOR BRIDGES. (HUMPHREYS CO.)
- ② TO ACT AS SIDE DRAINS UNDER DRIVEWAYS.
- ③ INCLUDES 430 LF FOR BRIDGES. (HUMPHREYS CO.)
- ④ INCLUDES 265 LF FOR BRIDGES. (HUMPHREYS CO.)

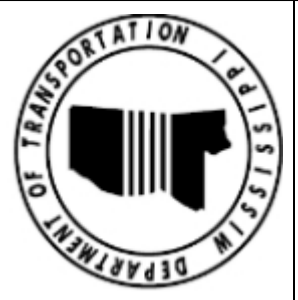


	
MISSISSIPPI DEPARTMENT OF TRANSPORTATION SUMMARY OF QUANTITIES	
PROJ NO: BR-0018-01(026) COUNTY: HUMPHREYS	Working Number SQ-2
FILENAME: 106109-301-302-SQS-ADD Design Team WJENDES	Sheet Number 10
10/07/2024 REPLACED PAY ITEM.	10/15/2024 ADDED PAY ITEMS.
10/15/2024 MW	Revision by

STATE	PROJECT NO.
MISS	BR-0018-01(026)

PAY ITEM NO.	PAY ITEM	UNIT	HUMPHREYS : 106109-301000	
			Prelim	Final
630-G005	Type 3 Object Markers, OM-3R or OM-3L, Post Mounted	EA	2	
907-630-PP002	Roadside Directional Signs, Sheet Aluminum, 0.125" Thickness, Ground Mounted	SF	17	
699-A001	Roadway Construction Stakes	LS	1	

SUMMARY OF QUANTITIES (SHEET 3)

MISSISSIPPI DEPARTMENT OF TRANSPORTATION SUMMARY OF QUANTITIES		 Working Number SQ-3
PROJ NO: BR-0018-01(026) COUNTY: HUMPHREYS		
# Design Team WENTWIDES	# Checked Date	# Sheet Number 11
FILENAME: 106109-301-302-SQS-ADD		

ADDENDUM

SUMMARY OF QUANTITIES (SHEET 4)

PAY ITEM NO.	PAY ITEM	UNIT	WASHINGTON : 106109-302000	
			Prelim	Final
201-B001	Clearing and Grubbing	ACRE	8	1
202-A001	Removal of Obstructions	LS	1	1
202-B007	Removal of Asphalt Pavement, All Depths	SY	6,315	1
202-B019	Removal of Box Culvert	LF	43	1
202-B023	Removal of Bridge	EA	1	1
202-B158	Removal of Guard Rail, Including Rails, Posts and Terminal Ends	LF	332	1
203-A001	Unclassified Excavation, FM, AH	CY	4,680	1
203-EX020	Borrow Excavation, AH, FME, Class B9	CY	63,340	1
203-G001	Excess Excavation, FM, AH	CY	11,074	1
206-A001	Structure Excavation	CY	193	4
206-B001	Select Material for Undercuts, Contractor Furnished, FM	CY	26	1
209-A005	Geotextile Stabilization, Type V, Non-Woven	SY	3,520	1
213-C001	Superphosphate	TON	10	1
216-A001	Solid Sodding	SY	168	1
217-A001	Ditch Liner	SY	734	1
219-A001	Watering	KGAL	4	1
220-A001	Insect Pest Control	ACRE	21	1
221-A001	Concrete Paved Ditch	CY	1	1
223-A001	Mowing	ACRE	41	1
224-A001	Soil Reinforcing Mat	SY	223	1
225-A001	Grassing	ACRE	21	1
225-B001	Agricultural Limestone	TON	41	1
225-C001	Mulch, Vegetative Mulch	TON	41	1
226-A001	Temporary Grassing	ACRE	21	1
229-A001	Erosion Mat	SY	100	1
907-234-C001	Super Silt Fence	LF	7,150	13
237-A002	Wattles, 20"	LF	250	1
247-A001	Temporary Stream Diversion	EA	1	1
249-A001	Riprap for Erosion Control	TON	250	1
304-D002	Granular Material, Crushed Stone	TON	80	9
304-F001	3/4" and Down Crushed Stone Base	TON	8,849	10
304-F002	OR Size 610 Crushed Stone Base	TON	8,849	10
304-F003	OR Size 825B Crushed Stone Base	TON	8,849	10
307-C004	6" Soil-Lime-Water Mixing, Class C	SY	5,775	8
307-D001	Lime	TON	78	8
307-S001	Bituminous Curing Seal	GAL	1,444	8
308-A001	Cement	TON	52	8
308-B003	Soil-Cement-Water Mixing, Optional Mixers, Design Soil	SY	5,775	8
308-S001	Bituminous Curing Seal	GAL	1,444	8
403-A003	12.5-mm, ST, Asphalt Pavement	TON	933	6
403-A006	19-mm, ST, Asphalt Pavement	TON	2,564	1
403-A015	9.5-mm, ST, Asphalt Pavement	TON	1,160	7

- 1 INCLUDES, BUT NOT LIMITED TO, APRONS, PARAPETS, FENCE, CONCRETE FOOTINGS, AND/OR OTHER UNDERGROUND OBSTRUCTIONS.
- 2 BRIDGE NO. 23.9 @ STA. 520+00 OVER SUNFLOWER RIVER. 6 SPANS (1 @ 80', 2 @ 151', 1 @ 68', 2 @ 60'.
- 3 INCLUDES REMOVAL OF BRIDGE END SECTION, TERMINAL END SECTION, RAIL, POSTS, BLOCK OUTS, HARDWARE, ETC. (AS MEASURED FROM BEGINNING OF BRIDGE END SECTION TO END OF TERMINAL END SECTION), AND OBJECT MARKERS.
- 4 INCLUDES 155 CY FOR BOX CULVERTS AND 38 CY FOR PIPES. (WASHINGTON CO.)
- 5 INCLUDES A 20% INCREASE FROM CALCULATED QUANTITY.
- 6 INCLUDES 9 TONS FOR DRIVEWAYS. (WASHINGTON CO.)
- 7 INCLUDES 7 TONS FOR DRIVEWAYS. (WASHINGTON CO.)
- 8 FOR TREATMENT OF SUBGRADE.
- 9 QUANTITY TO BE USED FOR DRIVEWAYS. (SEE EQ-5)
- 10 INCLUDES 1313 CY TO BE USED TO HELP MAINTAIN LOCAL ROAD TRAFFIC DURING CONSTRUCTION.
- 11 INCLUDES A 25% INCREASE FROM CALCULATED QUANTITY.
- 12 REMOVAL OF SHACKS AND FOOTINGS IN THE AREA.
- 13 WETLANDS ON SITE.



MISSISSIPPI DEPARTMENT OF TRANSPORTATION	
SUMMARY OF QUANTITIES	
	Working Number SQ-4
PROJ NO: BR-0018-01(026) COUNTY: WASHINGTON	
Design Team WENDES	Checked Date
FILENAME: 106109-301-302-SQS-ADD	
Sheet Number 12	Date

10/15/2024	ADDED AND REVISED PAY ITEMS.	Revision	by
------------	------------------------------	----------	----

ADDENDUM

STATE	PROJECT NO.
MISS	BR-0018-01(026)

SUMMARY OF QUANTITIES (SHEET 5)

PAY ITEM NO.	PAY ITEM	UNIT	WASHINGTON : 106109-302000	
			Prelim	Final
403-C003	19-mm, ST, Asphalt Pavement, Trench Widening	TON	39	
406-D001	Fine Milling of Bituminous Pavement, All Depths	SY	2,036	
407-A001	Asphalt for Tack Coat	GAL	1,647	
907-413-E001	Sawing and Sealing Transverse Joints in Asphalt Pavement	LF	45	
423-A001	Rumble Strips, Ground In	MI	1	
502-A001	Reinforced Cement Concrete Bridge End Pavement	SY	93	
601-A001	Class "B" Structural Concrete	CY	94	
601-B001	Class "B" Structural Concrete, Minor Structures	CY	1	
602-A001	Reinforcing Steel	LBS	15,390	
603-CA011	18" Reinforced Concrete Pipe, Class III	LF	168	
603-CE008	29" x 18" Concrete Arch Pipe, Class A III	LF	56	
603-CF003	29" x 18" Concrete Arch Pipe End Section	EA	2	
605-AA001	Geotextile for Subsurface Drainage, Type III	SY	25	
605-T001	4" Perforated Pipe for Underdrains	LF	45	
605-U001	4" Non-perforated Pipe for Underdrains	LF	5	
605-W001	Filter Material for Combination Storm Drain and/or Underdrains, Type A, FM	CY	2	
605-W002	Filter Material for Combination Storm Drain and/or Underdrains, Type B, FM	CY	28	
	OR			
605-W003	Filter Material for Combination Storm Drain and/or Underdrains, Type C, FM	CY	28	
606-B001	Guard Rail, Class A, Type 1	LF	125	
606-D022	Guard Rail, Bridge End Section, Type I	EA	2	
606-E001	Guard Rail, Terminal End Section	EA	2	
615-A004	Concrete Bridge End Barrier, 43.5"	LF	20	
617-A001	Right-of-Way Marker	EA	23	
907-618-A001	Maintenance of Traffic	LS	1	
619-A1002	Temporary Traffic Stripe, Continuous White	LF	13,353	
619-A2002	Temporary Traffic Stripe, Continuous Yellow	LF	8,754	
619-A4001	Temporary Traffic Stripe, Skip Yellow	LF	3,310	
619-A5001	Temporary Traffic Stripe, Detail	LF	1,539	
619-A6002	Temporary Traffic Stripe, Legend	LF	602	
619-D1001	Standard Roadside Construction Signs, Less than 10 Square Feet	SF	24	
619-D2001	Standard Roadside Construction Signs, 10 Square Feet or More	SF	360	
907-619-E3001	Changeable Message Sign	EA	2	
619-G4001	Barricades, Type III, Double Faced	LF	36	
619-G4005	Barricades, Type III, Single Faced	LF	120	
619-G5001	Free Standing Plastic Drums	EA	64	
620-A001	Mobilization	LS	1	
622-B001	Engineer's Field Office Building, Type 2 LO	EA	1	
907-626-C011	6" Thermoplastic Double Drop Edge Stripe, Continuous White	LF	7,553	
907-626-D004	6" Thermoplastic Double Drop Traffic Stripe, Skip Yellow	LF	3,310	
907-626-E004	6" Thermoplastic Double Drop Traffic Stripe, Continuous Yellow	LF	2,954	
907-626-G006	Thermoplastic Double Drop Detail Stripe, White	LF	1,339	
907-626-H007	Thermoplastic Double Drop Legend, White	LF	401	
907-627-J001	Two-Way Clear Reflective High Performance Raised Markers	EA	69	

- ① INCLUDES 918 LF FOR BRIDGES. (WASHINGTON CO.)
- ② TO ACT AS SIDE DRAINS UNDER DRIVEWAYS.
- ③ INCLUDES 460 LF FOR BRIDGES. (WASHINGTON CO.)
- ④ INCLUDES 295 LF FOR BRIDGES. (WASHINGTON CO.)



Date	Revision
10/15/2024	ADDED AND REVISED PAY ITEMS.
10/07/2024	REPLACED PAY ITEM.

**MISSISSIPPI DEPARTMENT OF TRANSPORTATION
SUMMARY OF QUANTITIES**



PROJ NO: BR-0018-01(026) COUNTY: WASHINGTON	Working Number SQ-5
FILENAME: 106109-301-302-SQS-ADD	Sheet Number 13

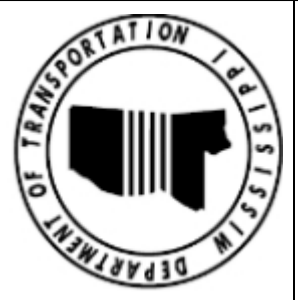
Design Team: WJENDES Checked: _____ Date: _____

ADDENDUM

STATE	PROJECT NO.
MISS	BR-0018-01(026)

① TO BE USED IN RCB APRONS.

PAY ITEM NO.	PAY ITEM	UNIT	WASHINGTON : 106109-302000	
			Prelim	Final
907-627-L001	Two-Way Yellow Reflective High Performance Raised Markers	EA	57	
630-A001	Standard Roadside Signs, Sheet Aluminum, 0.080" Thickness	SF	20	
630-A003	Standard Roadside Signs, Sheet Aluminum, 0.125" Thickness	SF	27	
630-C005	Square Tube Posts, 2.0 lb/ft	LF	99	
630-F006	Delineators, Guard Rail, White	EA	9	
630-G005	Type 3 Object Markers, OM-3R or OM-3L, Post Mounted	EA	6	
907-630-PP002	Roadside Directional Signs, Sheet Aluminum, 0.125" Thickness, Ground Mounted	SF	17	
699-A001	Roadway Construction Stakes	LS	1	
815-A007	Loose Riprap, Size 300	TON	80	①
815-E001	Geotextile under Riprap	SY	54	①

MISSISSIPPI DEPARTMENT OF TRANSPORTATION	
SUMMARY OF QUANTITIES	
	
PROJ NO: BR-0018-01(026) COUNTY: WASHINGTON	
Working Number	SQ-6
Sheet Number	14
# of Revisions	0
# of Design Team W/ENDES	Checked
Date	Date
FILENAME: 106109-301-302-SQS-ADD	


ADDENDUM

STATE	PROJECT NO.
MISS	BR-0018-01(026)

SUMMARY OF QUANTITIES (SHEET 7)

PAY ITEM NO.	PAY ITEM	UNIT	Total Amount	
			Prelim	Final
201-B001	Clearing and Grubbing	ACRE	11	
202-A001	Removal of Obstructions	LS	1	
202-B004	Removal of Asphalt Driveways, All Depths	SY	991	
202-B007	Removal of Asphalt Pavement, All Depths	SY	8,276	
202-B019	Removal of Box Culvert	LF	43	
202-B023	Removal of Bridge	EA	1	
202-B158	Removal of Guard Rail, Including Rails, Posts and Terminal Ends	LF	664	
202-B191	Removal of Pipe, 8" And Above	LF	111	
203-A001	Unclassified Excavation, FM, AH	CY	7,719	
203-EX020	Borrow Excavation, AH, FME, Class B9	CY	87,887	
203-G001	Excess Excavation, FM, AH	CY	12,126	
206-A001	Structure Excavation	CY	253	
206-B001	Select Material for Undercuts, Contractor Furnished, FM	CY	26	
209-A005	Geotextile Stabilization, Type V, Non-Woven	SY	5,488	
213-C001	Superphosphate	TON	13	
216-A001	Solid Sodding	SY	214	
217-A001	Ditch Liner	SY	779	
219-A001	Watering	KGAL	5	
220-A001	Insect Pest Control	ACRE	27	
221-A001	Concrete Paved Ditch	CY	2	
223-A001	Mowing	ACRE	52	
224-A001	Soil Reinforcing Mat	SY	223	
225-A001	Grassing	ACRE	27	
225-B001	Agricultural Limestone	TON	52	
225-C001	Mulch, Vegetative Mulch	TON	52	
226-A001	Temporary Grassing	ACRE	27	
229-A001	Erosion Mat	SY	200	
907-234-C001	Super Silt Fence	LF	10,550	
237-A002	Wattles, 20"	LF	500	
247-A001	Temporary Stream Diversion	EA	1	
249-A001	Riprap for Erosion Control	TON	500	
304-D002	Granular Material, Crushed Stone	TON	95	
304-F001	3/4" and Down Crushed Stone Base	TON	13,970	
	OR			
304-F002	Size 610 Crushed Stone Base	TON	13,970	
	OR			
304-F003	Size 825B Crushed Stone Base	TON	13,970	
307-C004	6" Soil-Lime-Water Mixing, Class C	SY	9,277	
307-D001	Lime	TON	125	
307-S001	Bituminous Curing Seal	GAL	2,320	
308-A001	Cement	TON	84	
308-B003	Soil-Cement-Water Mixing, Optional Mixers, Design Soil	SY	9,277	
308-S001	Bituminous Curing Seal	GAL	2,320	
403-A003	12.5-mm, ST, Asphalt Pavement	TON	1,486	

- ① INCLUDES, BUT NOT LIMITED TO, APRONS, PARAPETS, FENCE, CONCRETE FOOTINGS, AND/OR OTHER UNDERGROUND OBSTRUCTIONS.
- ② BRIDGE NO. 23.9 @ STA. 520+00 OVER SUNFLOWER RIVER. 6 SPANS (1 @ 80', 2 @ 151', 1 @ 68', 2 @ 60'.
- ③ INCLUDES REMOVAL OF BRIDGE END SECTION, TERMINAL END SECTION, RAIL, POSTS, BLOCK OUTS, HARDWARE, ETC. (AS MEASURED FROM BEGINNING OF BRIDGE END SECTION TO END OF TERMINAL END SECTION), AND OBJECT MARKERS.
- ④ INCLUDES 155 CY FOR BOX CULVERTS AND 38 CY FOR PIPES. (WASHINGTON CO.)
- ⑤ INCLUDES A 20% INCREASE FROM CALCULATED QUANTITY.
- ⑥ INCLUDES 9 TONS FOR DRIVEWAYS. (WASHINGTON CO.)
- ⑦ DOES NOT INCLUDE ABANDONED UTILITY LINES.
- ⑧ INCLUDES 4 TONS FOR DRIVEWAYS. (HUMPHREYS CO.)
- ⑨ FOR TREATMENT OF SUBGRADE.
- ⑩ QUANTITY TO BE USED FOR DRIVEWAYS. (SEE EQ-5)
- ⑪ INCLUDES 1313 CY TO BE USED TO HELP MAINTAIN LOCAL ROAD TRAFFIC DURING CONSTRUCTION.
- ⑫ INCLUDES 657 CY TO BE USED TO HELP MAINTAIN LOCAL ROAD TRAFFIC DURING CONSTRUCTION.
- ⑬ INCLUDES A 25% INCREASE FROM CALCULATED QUANTITY.
- ⑭ REMOVAL OF SHACKS AND FOOTINGS IN THE AREA.
- ⑮ WETLANDS ON SITE.

MISSISSIPPI DEPARTMENT OF TRANSPORTATION	
SUMMARY OF QUANTITIES - PROJECT TOTALS	
	
Working Number	SQ-7
PROJ NO: BR-0018-01(026)	
FMS: 106109-301000/106109-302000	
Design Team	WIENIDES
Checked	
Date	
FILENAME: 106109-301-302-SQS-ADD	
Sheet Number	15

ADDENDUM

STATE	PROJECT NO.
MISS	BR-0018-01(026)

SUMMARY OF QUANTITIES (SHEET 8)

PAY ITEM NO.	PAY ITEM	UNIT	Total Amount	
			Prelim	Final
403-A006	19-mm, ST, Asphalt Pavement	TON	4,082	
403-A015	9.5-mm, ST, Asphalt Pavement	TON	1,826	
403-C003	19-mm, ST, Asphalt Pavement, Trench Widening	TON	65	
406-D001	Fine Milling of Bituminous Pavement, All Depths	SY	3,122	
407-A001	Asphalt for Tack Coat	GAL	2,624	
907-413-E001	Sawing and Sealing Transverse Joints in Asphalt Pavement	LF	90	
423-A001	Rumble Strips, Ground In	MI	2	
502-A001	Reinforced Cement Concrete Bridge End Pavement	SY	186	
601-A001	Class "B" Structural Concrete	CY	94	
601-B001	Class "B" Structural Concrete, Minor Structures	CY	2	
602-A001	Reinforcing Steel	LBS	15,390	
603-CA011	18" Reinforced Concrete Pipe, Class III	LF	256	
603-CA026	24" Reinforced Concrete Pipe, Class III	LF	120	
603-CB004	24" Reinforced Concrete End Section	EA	2	
603-CE008	29" x 18" Concrete Arch Pipe, Class A III	LF	56	
603-CF003	29" x 18" Concrete Arch Pipe End Section	EA	2	
605-AA001	Geotextile for Subsurface Drainage, Type III	SY	50	
605-T001	4" Perforated Pipe for Underdrains	LF	90	
605-U001	4" Non-perforated Pipe for Underdrains	LF	10	
605-W001	Filter Material for Combination Storm Drain and/or Underdrains, Type A, FM	CY	4	
605-W002	Filter Material for Combination Storm Drain and/or Underdrains, Type B, FM	CY	56	
	OR			
605-W003	Filter Material for Combination Storm Drain and/or Underdrains, Type C, FM	CY	56	
606-B001	Guard Rail, Class A, Type 1	LF	250	
606-D022	Guard Rail, Bridge End Section, Type I	EA	4	
606-E001	Guard Rail, Terminal End Section	EA	4	
615-A004	Concrete Bridge End Barrier, 43.5"	LF	40	
617-A001	Right-of-Way Marker	EA	46	
907-618-A001	Maintenance of Traffic	LS	1	
619-A1002	Temporary Traffic Stripe, Continuous White	LF	20,086	
619-A2002	Temporary Traffic Stripe, Continuous Yellow	LF	13,709	
619-A4001	Temporary Traffic Stripe, Skip Yellow	LF	5,276	
619-A5001	Temporary Traffic Stripe, Detail	LF	2,971	
619-A6002	Temporary Traffic Stripe, Legend	LF	1,202	
619-D1001	Standard Roadside Construction Signs, Less than 10 Square Feet	SF	48	
619-D2001	Standard Roadside Construction Signs, 10 Square Feet or More	SF	698	
907-619-E3001	Changeable Message Sign	EA	4	
619-G4001	Barricades, Type III, Double Faced	LF	72	
619-G4005	Barricades, Type III, Single Faced	LF	192	
619-G5001	Free Standing Plastic Drums	EA	98	
620-A001	Mobilization	LS	1	
622-B001	Engineer's Field Office Building, Type 2 LO	EA	1	
907-626-C011	6" Thermoplastic Double Drop Edge Stripe, Continuous White	LF	11,087	
907-626-D004	6" Thermoplastic Double Drop Traffic Stripe, Skip Yellow	LF	5,276	

① ③ ②

②

⑤

①

②

②

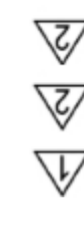
②

②

②

② ④

⑥ ⑦



10/07/2024	MW	REPLACED PAY ITEM.
10/15/2024	MW	ADDED AND REVISED PAY ITEMS.
10/15/2024	MW	ADDED PAY ITEMS.
		Revision
	By	

MISSISSIPPI DEPARTMENT OF TRANSPORTATION
SUMMARY OF QUANTITIES - PROJECT TOTALS

PROJ NO: BR-0018-01(026)
 FMS: 106109-301000/106109-302000

Working Number
SQ-8

Design Team **WNIENDES** Checked Date

FILENAME: 106109-301-302-SQS-ADD
 Sheet Number
16



ADDENDUM

STATE	PROJECT NO.
MISS	BR-0018-01(026)


SUMMARY OF QUANTITIES (SHEET 9)

PAY ITEM NO.	PAY ITEM	UNIT	Total Amount	
			Prelim	Final
907-626-E004	6" Thermoplastic Double Drop Traffic Stripe, Continuous Yellow	LF	4,709	
907-626-G006	Thermoplastic Double Drop Detail Stripe, White	LF	2,771	
907-626-H007	Thermoplastic Double Drop Legend, White	LF	801	
907-627-J001	Two-Way Clear Reflective High Performance Raised Markers	EA	144	
907-627-L001	Two-Way Yellow Reflective High Performance Raised Markers	EA	101	
630-A001	Standard Roadside Signs, Sheet Aluminum, 0.080" Thickness	SF	40	
630-A003	Standard Roadside Signs, Sheet Aluminum, 0.125" Thickness	SF	54	
630-C005	Square Tube Posts, 2.0 lb/ft	LF	198	
630-F006	Delineators, Guard Rail, White	EA	18	
630-G005	Type 3 Object Markers, OM-3R or OM-3L, Post Mounted	EA	8	
907-630-PP002	Roadside Directional Signs, Sheet Aluminum, 0.125" Thickness, Ground Mounted	SF	34	
699-A001	Roadway Construction Stakes	LS	1	
815-A007	Loose Riprap, Size 300	TON	80	
815-E001	Geotextile under Riprap	SY	54	

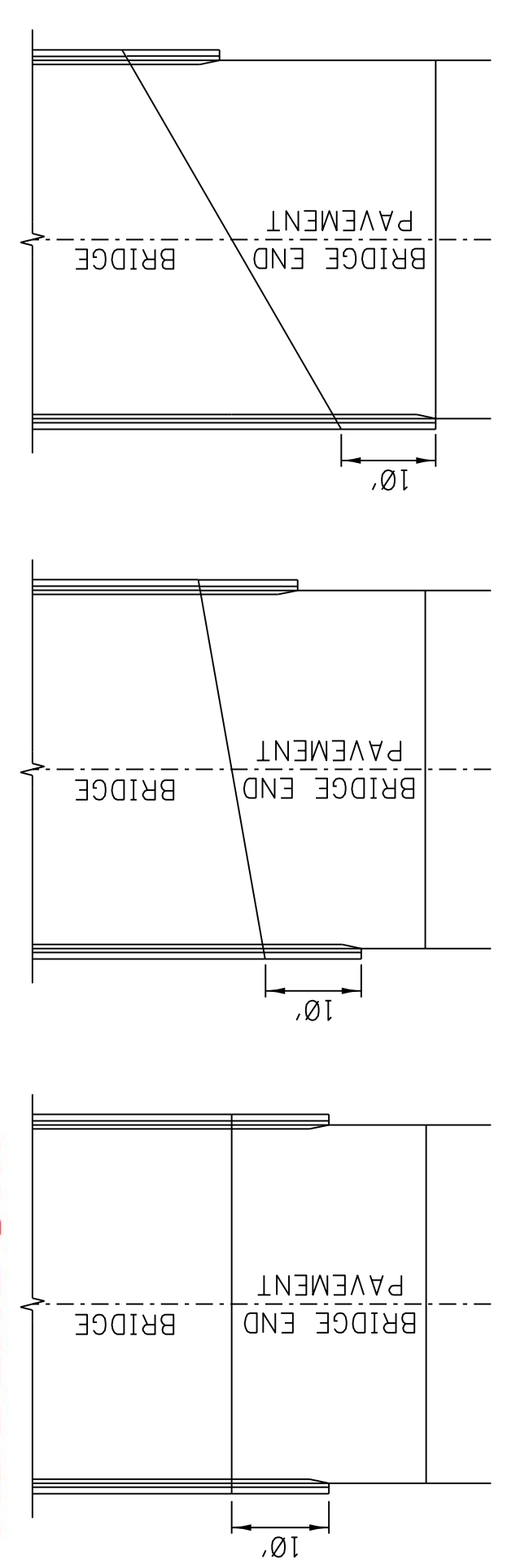
- ① INCLUDES 295 LF FOR BRIDGES. (WASHINGTON CO.)
- ② TO BE USED IN RCB APRONS.
- ③ INCLUDES 265 LF FOR BRIDGES. (HUMPHREYS CO.)

① ③

② ②

MISSISSIPPI DEPARTMENT OF TRANSPORTATION	
SUMMARY OF QUANTITIES - PROJECT TOTALS	
	
PROJ NO: BR-0018-01(026)	Working Number
FMS: 106109-301000/106109-302000	SQ-9
FILENAME: 106109-301-302-SQS-ADD	Sheet Number
Design Team WENDEES	Checked
	Date
	17

ADDENDUM

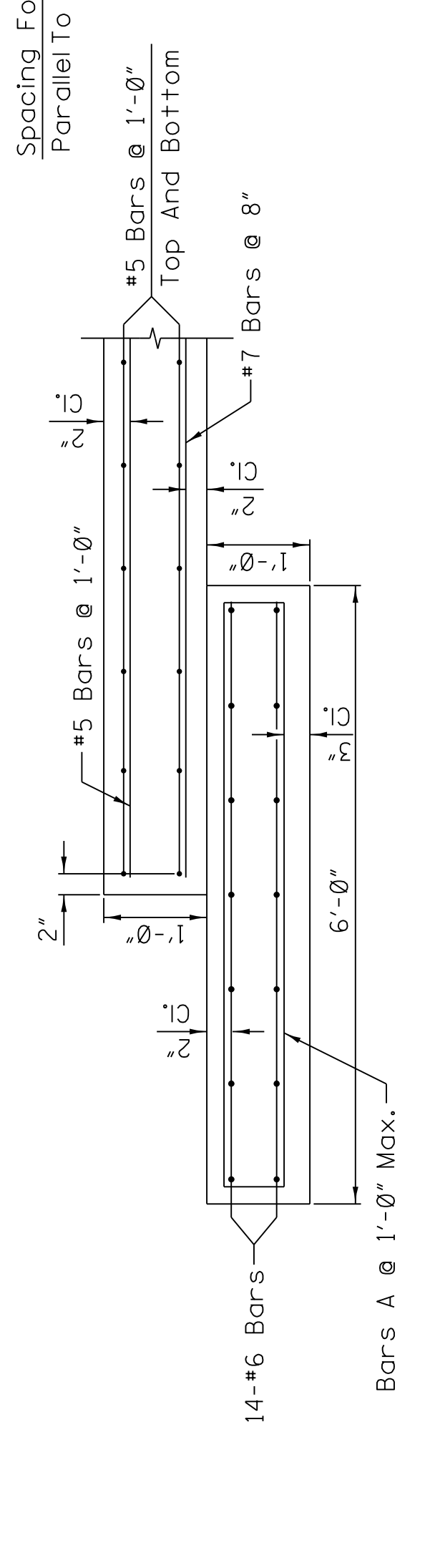
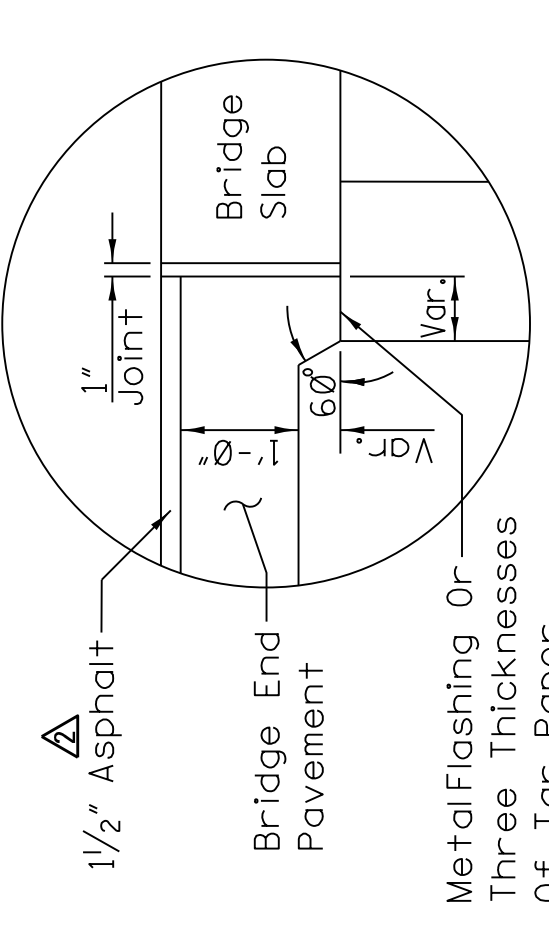


BRIDGE WITH NO SKEW AND 'A' EQUAL TO 10'

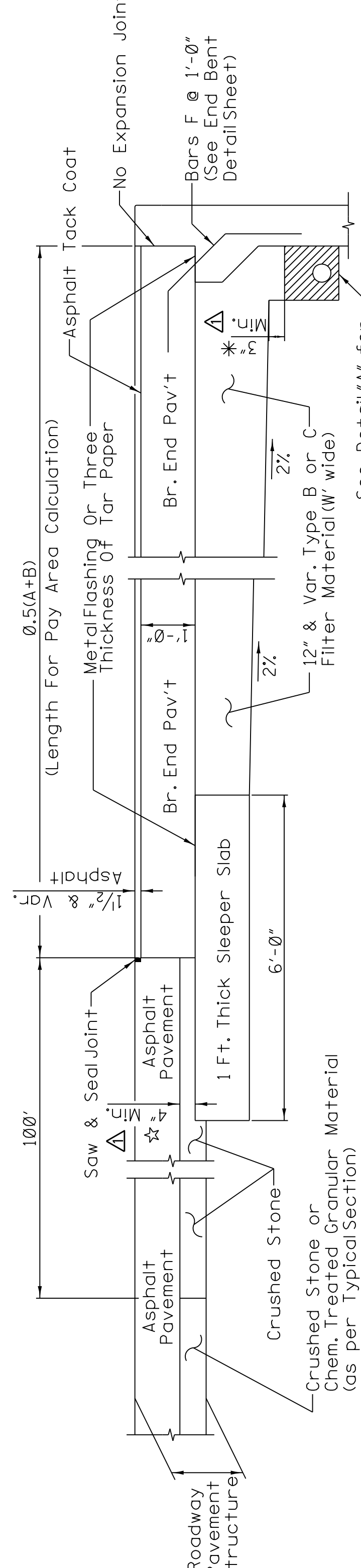
BRIDGE WITH SKEW AND 'A' MORE THAN 10'

BRIDGE WITH SKEW AND 'A' EQUAL TO 10'

DETAIL SHOWING METHOD OF SEATING BRIDGE END PAVEMENT ON BRIDGES WITH NO PAVING BRACKET

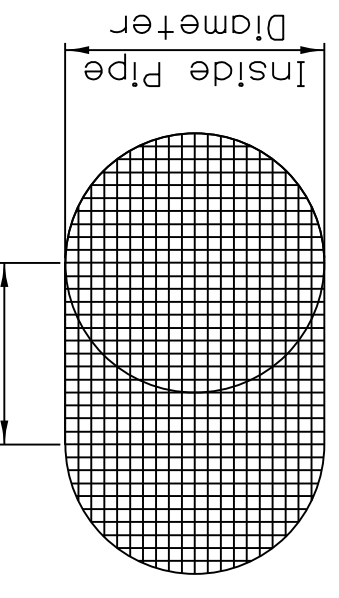


SECTION C-C



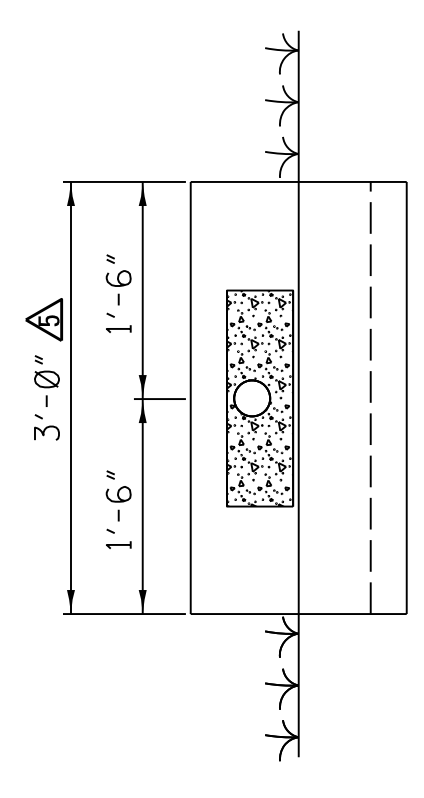
SECTION B-B

☆ NOTE: When area between sleeper slab and asphalt is less than 4", asphalt should be used instead of crushed stone.



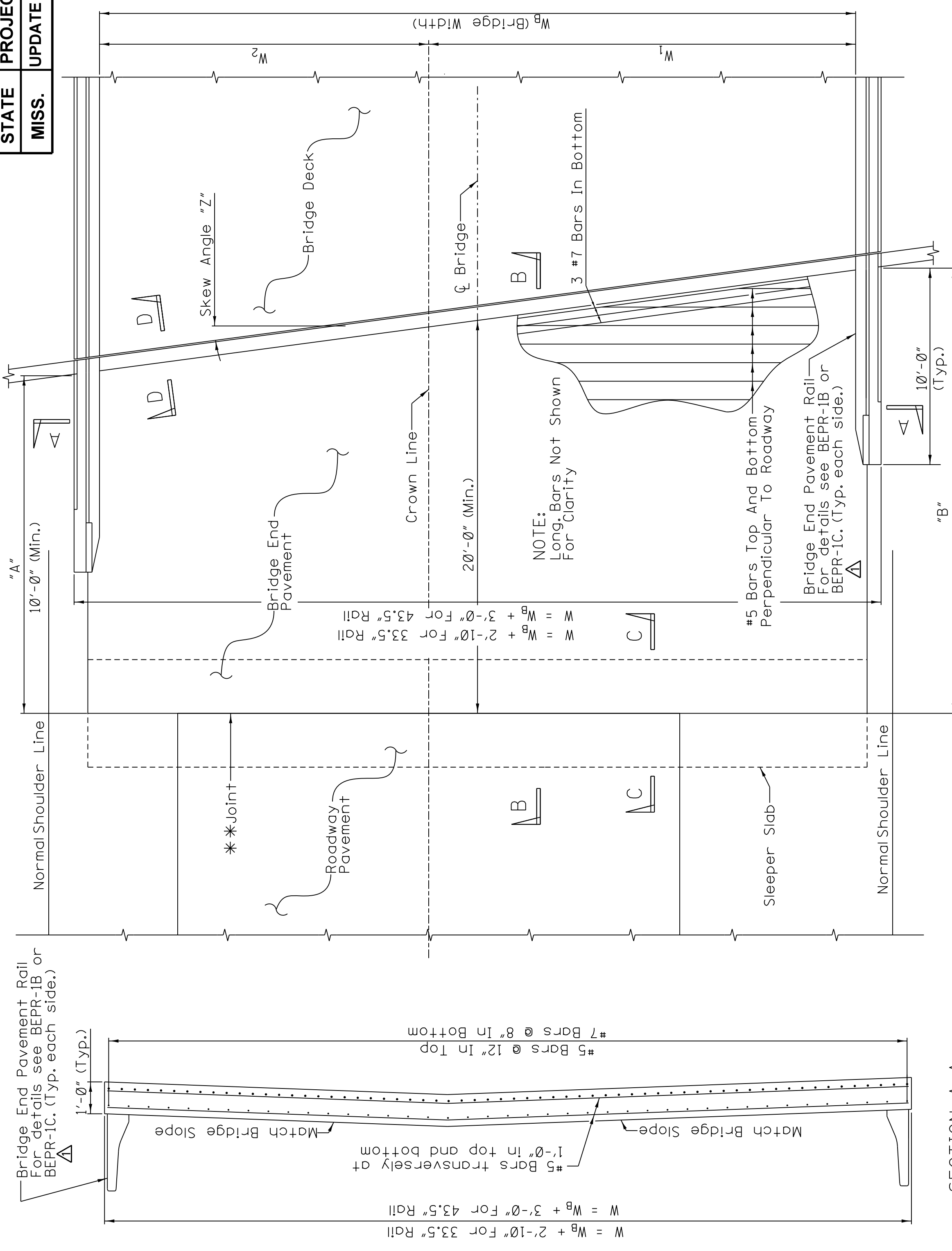
DETAIL OF RODENT SCREEN

3x3 galvanized hardware cloth 0.063 wire or equal formed to fit snug to inside of pipe. (Cost absorbed)



OUTLET APRON DETAIL

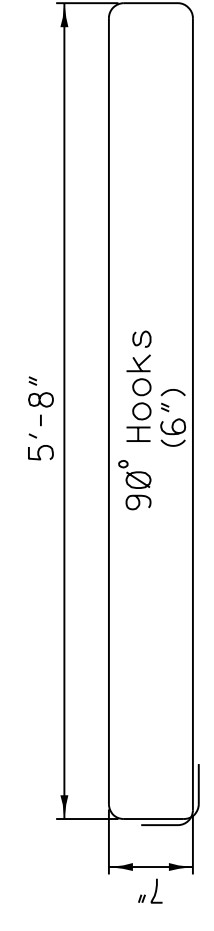
- NOTES:
- 0.363 C.Y. Class "C" concrete required for apron.
 - Small animal guards shall be required on all exposed pipe openings by the end of the work day installed.
 - 4" perforated drain pipe to be installed under the roadway and 2' outside of the shoulder. 4" non-perforated drain pipe to be installed for the remainder to the outlet apron.
 - Under-drain outlets shall be required on both sides of the roadway in normal crown sections and only on the low side of super-elevated sections.



SECTION A-A

☆ NOTE:

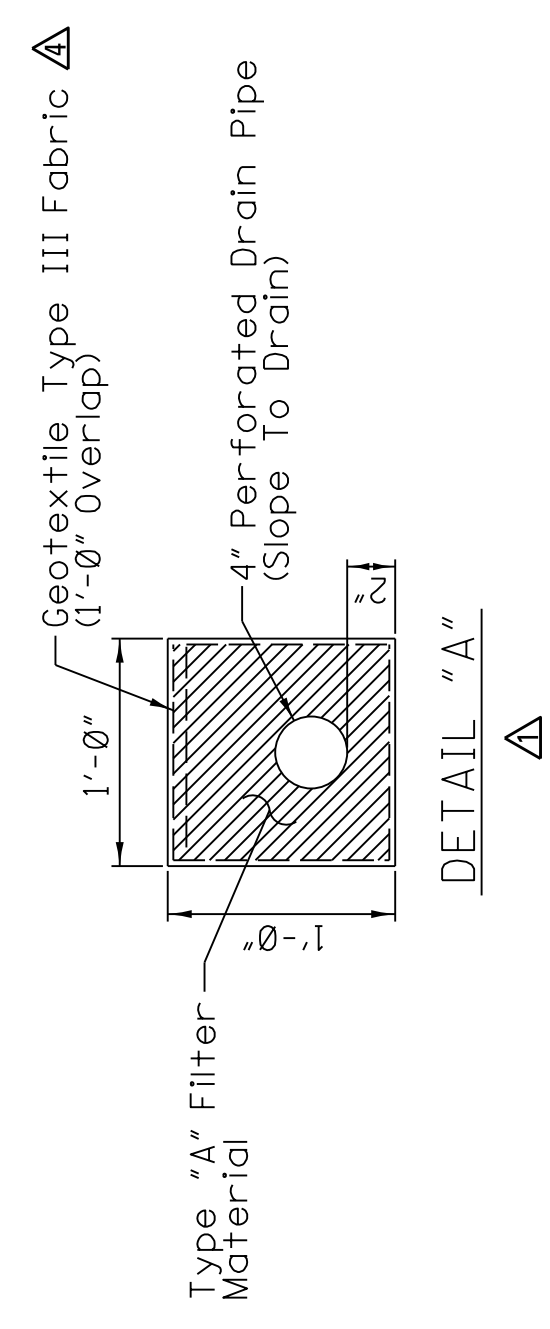
- Premolded Expansion Joint Sealed With Poured Joint Filler (Doweled). This Joint Required Only If Roadway Pavement Is Concrete.



Bars A - #5

BAR BENDING DETAILS

Dimensions Are Out To Out



DETAIL "A"

PLAN AT BRIDGE END

GENERAL NOTES:

- If Bridge End Pavement is constructed in more than one section, longitudinal construction joints with tie bars shall be used. Tie bars shall be #5 bars, 2'-6" long and spaced 2'-6" o.c. Such construction shall be used where indicated on plans.
- Dimensions "A" & "B" are based on a mid-length of 20 feet. Except in no case shall "A" be less than 10'-0". "W", "W₁", "W₂", "A", "B", skew angle "Z" and quantities.
- See quantity section of plans for dimensions "W", "W₁", "W₂", "A", "B", skew angle "Z" and quantities.
- Reinforcement (deformed) may be furnished full length or may be spliced. If bars are spliced, they shall be spliced not less than 30 diameters.
- If top lift is greater than 1.5', the lift shall be transitioned to 1.5" across the length of the bridge end slab.
- Outlets shall be required on both sides in normal crown and only on the low side of super-elevation.
- The bridge end pavement pay item includes Bridge End Pavement, Sleeper Slab and Metal Flashing. All other items shown on this sheet will be paid as indicated elsewhere in the plans.
- Class "B" concrete required for sleeper slab and bridge end pavement. Class "AA" concrete may be used with approval of the engineer (no cost adjustment will be made).

DATE	REVISION	BY
17/17/17	REV. NOTES AND DETAILS	MD
8/29/17	REV. NOTES AND DETAILS	MD
8/29/17	REV. NOTES AND DETAILS	MD
12/12/16	REV. NOTES AND DETAILS	MD
12/12/16	REV. NOTES AND DETAILS	MD

MISSISSIPPI DEPARTMENT OF TRANSPORTATION
BRIDGE END PAVEMENT (WITH RAIL OVERLAY, AND SLEEPER SLAB)
 PROJ. NO.: UPDATE
 COUNTY: UPDATE
 FILENAME: rwd.col
 DESIGN TEAM: UPDATE
 CHECKED: UPDATE
 DATE: 5-4-17

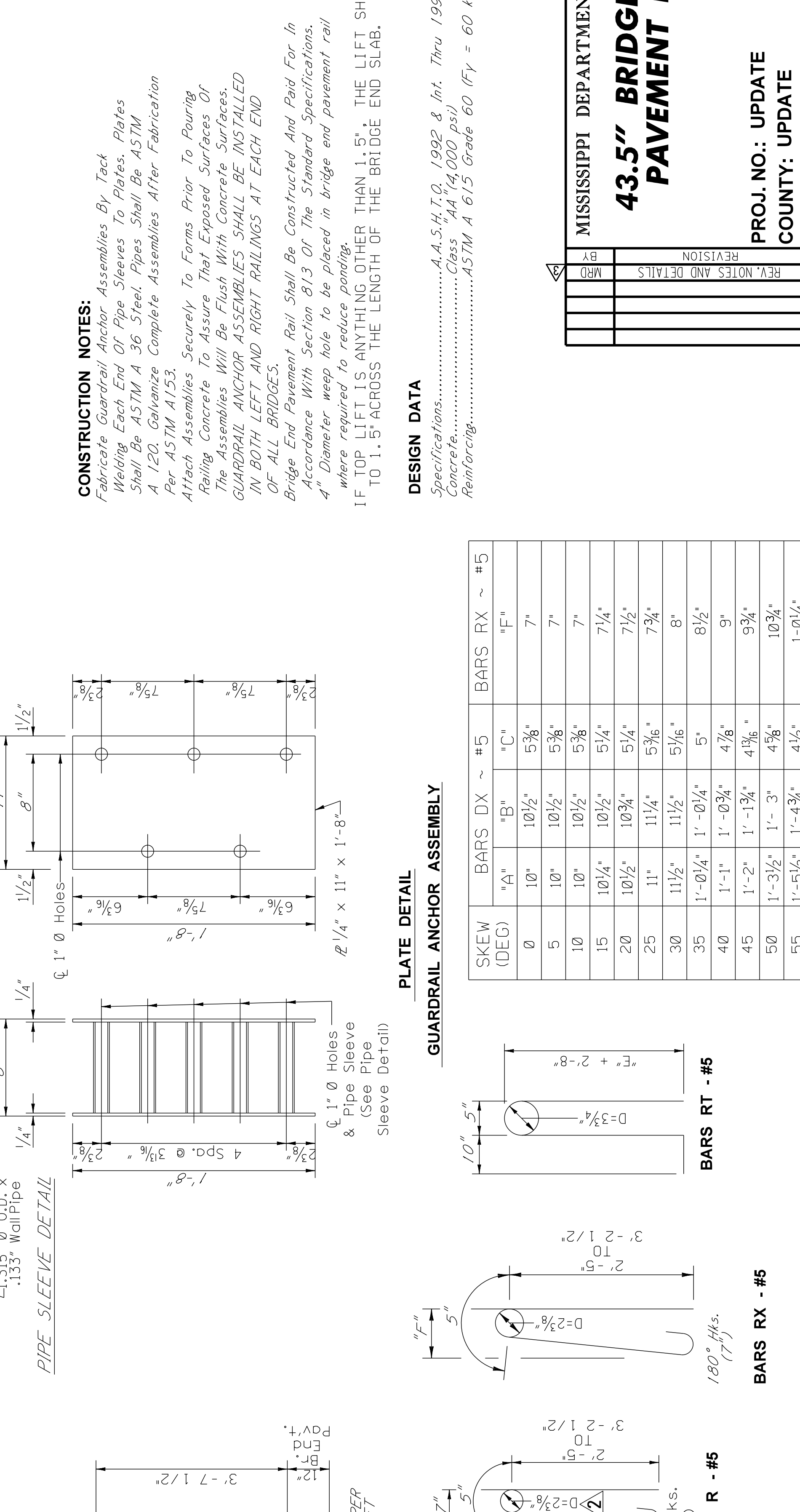
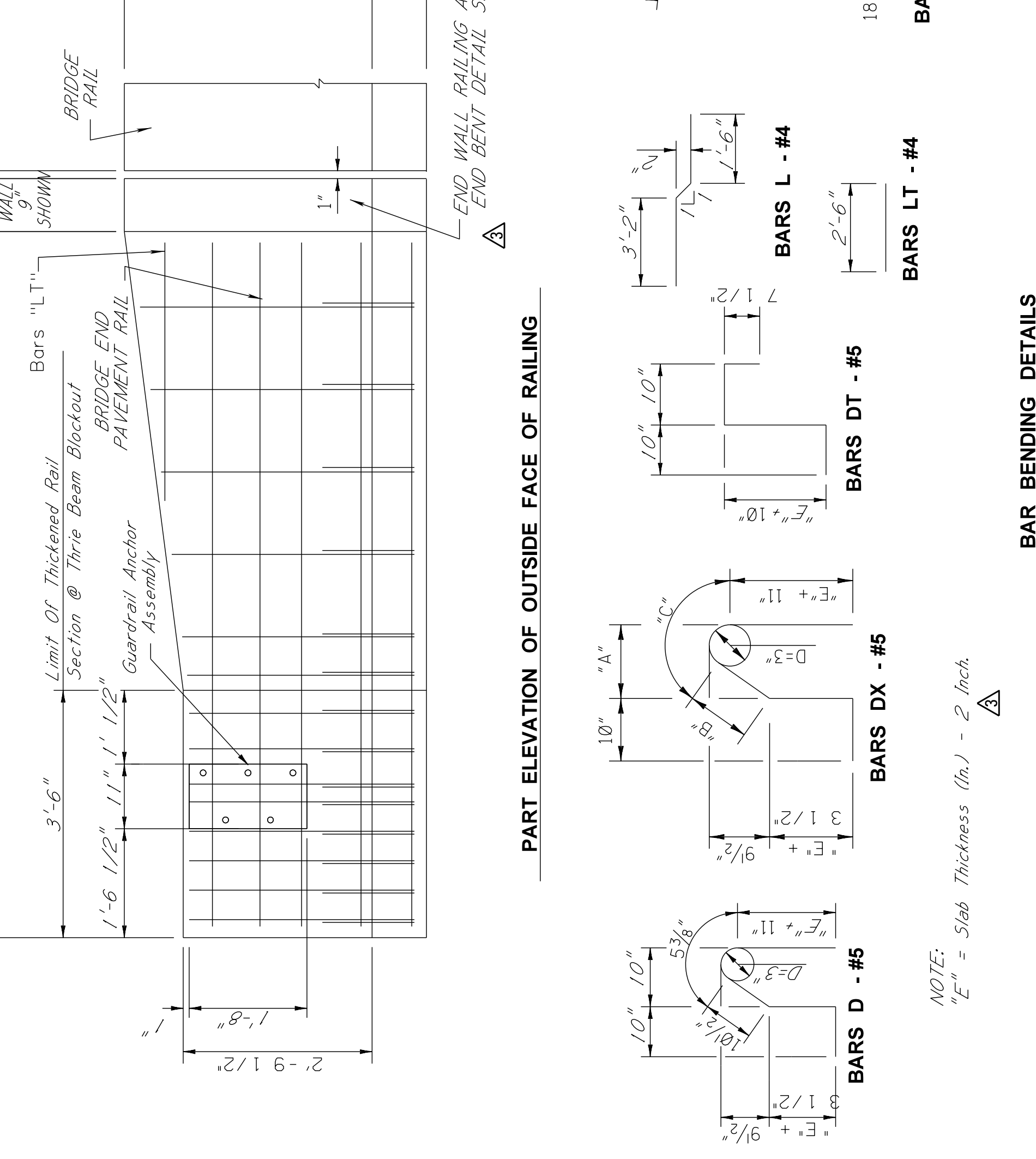
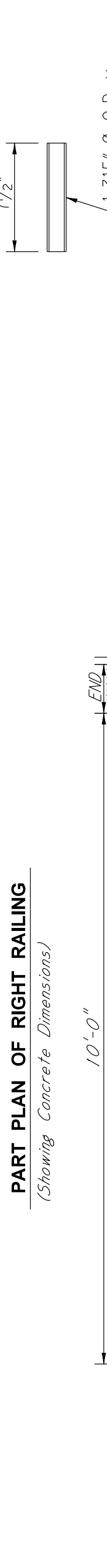
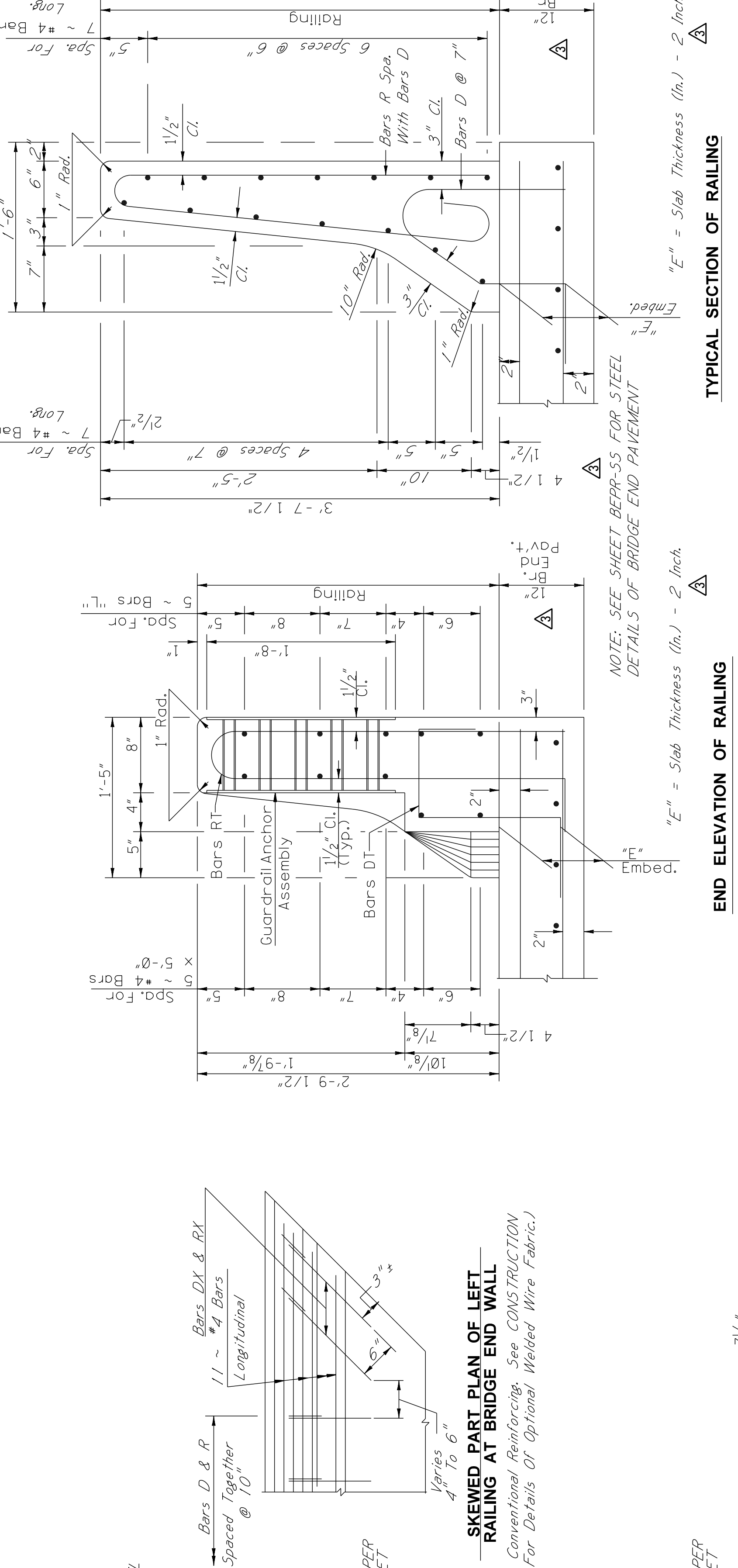
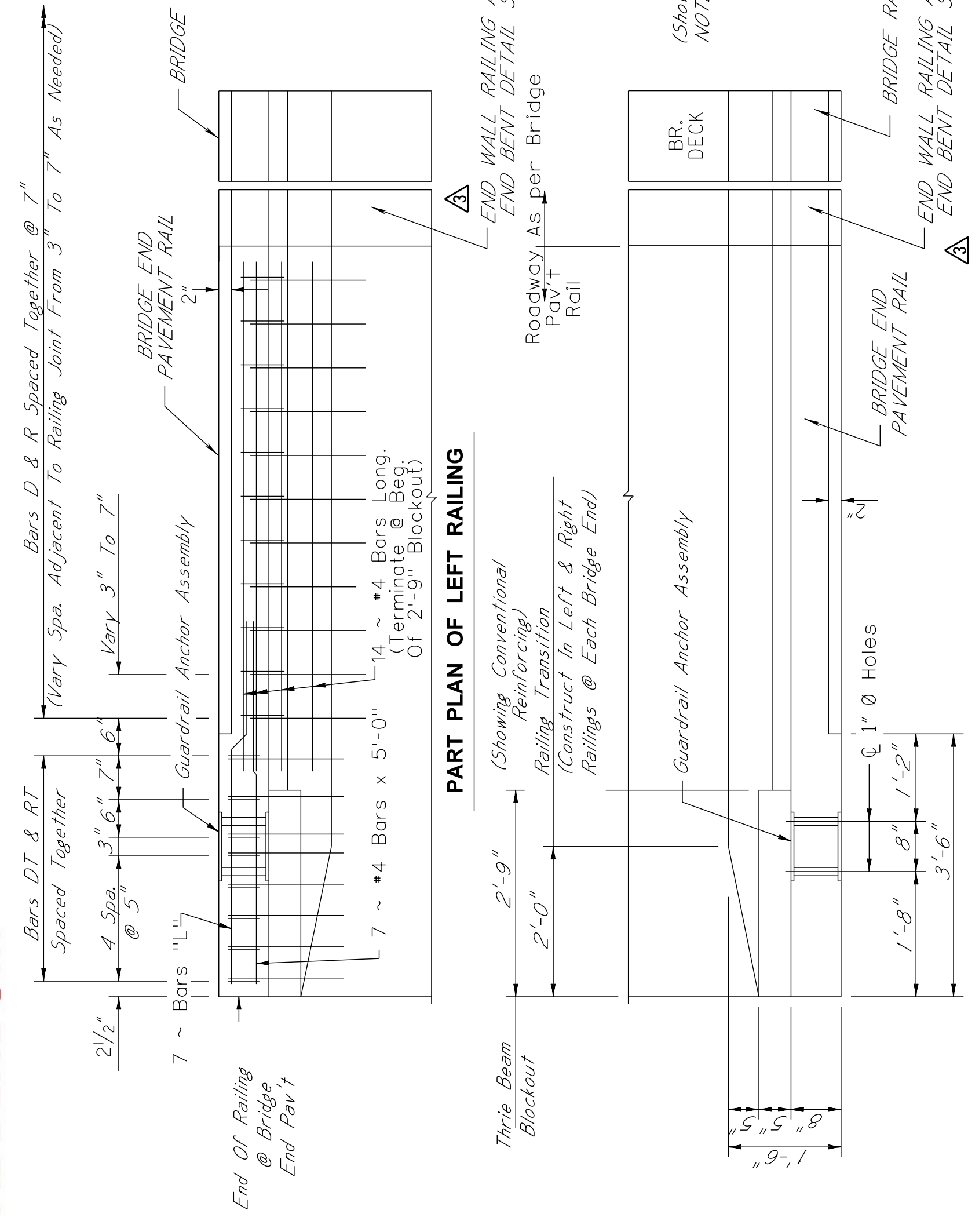
WORKING NUMBER: BEPR-SS
 SHEET NUMBER: 32

PROJ. NO.: UPDATE
 COUNTY: UPDATE

DATE	REVISION	BY
2-12-15	REV. NOTES AND DETAILS	MRD

FILENAME: rwd.col	CHECKED	UPDATE	DATE	2-12-15
DESIGN TEAM				

ADDENDUM



NOTE:
 "E" = Slab Thickness (In.) - 2 Inch

BAR BENDING DETAILS
 Dimensions Are Out To Out

ADDENDUM

STATE	PROJECT NO.
MISS.	BR-0018-01(026)

WORKING NUMBER SHEET NUMBER

WORKING NUMBER SHEET NUMBER

DESCRIPTION OF SHEET

DESCRIPTION OF SHEET

DETAILED INDEX
SUMMARY OF QUANTITIES

DI-BR-1 8001
SO-BR-1 8002

BRIDGE AT STA. 516+55.00 SR 12 OVER SUNFLOWER RIVER

GENERAL NOTES AND QUANTITIES
ELEVATION
FOUNDATION PLAN
END BENT NO. 1
END BENT NO. 4
END BENT DETAILS
INTERMEDIATE BENTS 2 AND 3
INTERMEDIATE BENT DETAILS
DRILLED SHAFT DETAILS
TYPICAL SECTION
TYPICAL CROSS FRAME SECTIONS
DECK PLAN SPAN NO. 1
DECK PLAN SPAN NO. 2
DECK PLAN SPAN NO. 3
FRAMING PLAN
FRAMING PLAN
FRAMING PLAN
FRAMING PLAN
STRUCTURAL STEEL NOTES AND CAMBER DIAGRAMS
FIELD SPLICE DETAILS
CROSS FRAME DETAILS
CROSS FRAME DETAILS
LATERAL BRACING DETAILS
SEGMENTAL JOINT DETAILS
SCUPPER DETAILS
DISC BEARING DETAILS
DISC BEARING DETAILS
DISC BEARING DETAILS
SCHEMATIC ERECTION SEQUENCE DIAGRAM
3'-6" RAILING DETAILS
GENERALIZED SOIL PROFILE
GENERALIZED SOIL PROFILE
TRIAL AND TEST SHAFT DETAILS

1 OF 33 8003
2 OF 33 8004
3 OF 33 8005
4 OF 33 8006
5 OF 33 8007
6 OF 33 8008
7 OF 33 8009
8 OF 33 8010
9 OF 33 8011
10 OF 33 8012
11 OF 33 8013
12 OF 33 8014
13 OF 33 8015
14 OF 33 8016
15 OF 33 8017
16 OF 33 8018
17 OF 33 8019
18 OF 33 8020
19 OF 33 8021
20 OF 33 8022
21 OF 33 8023
22 OF 33 8024
23 OF 33 8025
24 OF 33 8026
25 OF 33 8027
26 OF 33 8028
27 OF 33 8029
28 OF 33 8030
29 OF 33 8031
30 OF 33 8032
31 OF 33 8033
32 OF 33 8034
33 OF 33 8035

SPECIAL DESIGN SHEETS ~ INFORMATION PLANS

PROJECT NO. F.A.S. 13-A-(1)
BRIDGE AT STA. 520+64.25 OVER SUNFLOWER RIVER
ELEVATION, WITH PROFILE ON & RDWY.
DETAILS - PIERS I & III
DETAILS - PIER II
DETAILS - INT. BENTS 2 & 3, CONC. PILES
DETAILS - SPAN CONNECTIONS
DETAILS - END BENTS

8051
8052
8053
8054
8055
8056



BRIDGE DIVISION		
REVISIONS		
DATE	SHEET NO.	BY
5/11/23	8001-8003, 8006-8010, 8022, 8026-8028	JBJ
7/23/24	8003	JBJ
10/17/24	8002, 8003	JBJ

EROSION CONTROL PLAN SHEETS
SR 12 OVER SUNFLOWER RIVER - ELEVATION
SR 12 OVER SUNFLOWER RIVER - PLAN

ECP-1 8036
ECP-2 8037

DESIGNER D. BROUSSARD	CHECKER B. JOHNSON
DATE	ISSUE DATE
10/3/24	5/11/23
REV. R/RAP & GOTEKITE OTY	ADDED REVISION BLOCK
REVISIONS	
JBJ	
JBJ	

DATE: 2/6/23

Stantec

MISSISSIPPI DEPARTMENT OF TRANSPORTATION
DETAILED INDEX
(BRIDGE)
PROJECT BR-0018-01(026)
HUMPHREYS/
WASHINGTON COUNTY
WORKING NUMBER
DI-BR-1
SHEET NUMBER
8001

ADDENDUM

STATE	PROJECT NO.
MISS.	BR-0018-01(026)

SUMMARY OF QUANTITIES									
PAY ITEM NO.	PAY ITEM	UNIT	HUMPHREYS		WASHINGTON		PROJECT TOTALS		
			106109 - 301000	BR-0018-01(026)	106109 - 302000	BR-0018-01(026)	PRELIMINARY	FINAL	PRELIMINARY
	BRIDGE SUMMARY		QUANTITIES		QUANTITIES		QUANTITIES		
			PRELIMINARY	FINAL	PRELIMINARY	FINAL	PRELIMINARY	FINAL	FINAL
501-K001	Transverse Grooving	SY	1,819		1,819		3,638		
907-803-B001	Conventional Static Pile Load Test	EA	1				1		
907-803-I004	PDA Test Pile, Steel Pipe Pile	EA	2		2		4		
907-803-J001	Pile Restrike	EA	2		2		4		
803-K014	Drilled Shaft, 84" Diameter	LF	420		480		900		
803-L009	Test Shaft, 84" Diameter	EA	1				1		
803-M012	Trial Shaft, 84" Diameter	LF	145				145		
803-N001	Exploration	LF	45		45		90		
803-O013	Permanent Casing, 84" Diameter	LF	150		150		300		
803-P008	20" Steel Pipe Piling, Wall Thickness 0.500"	LF	1,360		1,360		2,720		
907-804-A002	Bridge Concrete, Class AA	CY	255		254		509		
907-804-A004	Bridge Concrete, Class BD	CY	576		577		1,153		
805-A001	Reinforcement	LBS	191,761		191,761		383,522		
810-A007	Structural Steel, A 709, Grade 50W	LBS	1,160,841		1,160,840		2,321,681		
810-A008	Structural Steel, A 709, Grade HPS 70W	LBS	169,322		169,322		338,644		
811-D001	Disc Bearing Device	EA	8		8		16		
813-A003	Concrete Railing, 42"	LF	909		910		1,819		
815-A007	Loose Riprap, Size 300	TON	2,030		1,720		3,750		
815-E001	Geotextile under Riprap	SY	1,180		980		2,160		
907-822-PP004	7" Segmental Expansion Joint	LF	41		42		83		



MISSISSIPPI DEPARTMENT OF TRANSPORTATION

SUMMARY OF QUANTITIES

PROJECT BR-0018-01(026)
HUMPHREYS/
WASHINGTON COUNTY

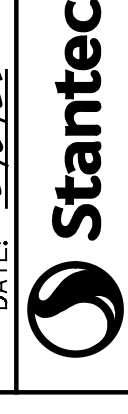
WORKING NUMBER
50-BR-1

SHEET NUMBER
8002

DATE: 2/6/23

DESIGNER	D. BROUSSARD	CHECKER	B. JOHNSON
DATE	5/11/23	ISSUE DATE	5/11/23
REV.	01 & PERM. CASING PAY ITEM	REV.	01 & PERM. CASING QUANTITIES
REVISIONS			

DESIGNER: D. BROUSSARD, LICENSE NO. 19177, PROFESSIONAL ENGINEER, MISSISSIPPI
 CHECKER: B. JOHNSON, LICENSE NO. 19177, PROFESSIONAL ENGINEER, MISSISSIPPI
 DIRECTOR OF STRUCTURES, STATE BRIDGE ENGINEER, MISSISSIPPI
 DEPT. DIR. OF STRUCTURES, ASST. STATE BRIDGE ENGINEER - MICH. DEW. PE.



ADDENDUM

GENERAL NOTES:

Specifications: Mississippi Standard Specifications for Road and Bridge Construction, 2017.
 No change of plans will be permitted except by written approval of the Director of Structures, State Bridge Engineer. Minor changes in details of design or construction procedure may be authorized by the Director of Structures, State Bridge Engineer, provided such changes will not be cause for contract price adjustment.
 The final surface textures of the bridge deck shall be mechanically transverse grooved in accordance with sections 501 and 907-804 of the specifications. See span details for limits of transverse grooving on bridge deck.

Bridge concrete shall be class "AA" or "BD" as indicated in the plans.
 Rating expansion joint material shall be bituminous fiber type unless otherwise noted.
 No payment will be allowed for excavation incidental to the construction of end bents.
 Bar bending details shall be in accordance with "Manual of Standard Practice for Detailing Reinforced Concrete Structures (ACI 313R-94)".
 Reinforcement order lists and required placing plans shall be furnished in accordance with section 805 of the Mississippi Standard Specifications. Partial submittals are not acceptable.
 Concrete surfaces shall receive a class 2 rubbed or spray finish in accordance with the specifications.
 Reinforcing steel shall be A.S.T.M. A615, Grade 60, unless otherwise noted.
 Work for which no pay items are provided in the proposal will not be paid for directly and compensation therefore will be included in the prices and payments for bid items.
 See sheet no. 8021 for camber and deflection notes for steel plate girders.

- * Pay item shall include all expenses necessary to deliver and install required temporary casing.
- ** Itemized Structural Steel, A709, Grade 50W quantity is as follows:
 Girders, Splice Plates: 2,047,690 lb.
 Cross Frames, Stiffeners, Lateral Bracing, Plates: 263,191 lb.
 Shear Studs: 5,206 lb.
 Misc.: (Scuppers, Railside Plates) 5,594 lb.
- *** Quantities for exploration are estimated. Final quantities to be determined by the Director of Structures, State Bridge Engineer.

DRILLED SHAFT NOTES:

The Contractor shall notify the State Geotechnical Engineer at least three (3) days in advance of any shaft (trial, anchor or test) construction. See sheet no. 8035 for test shaft details.
 The wet method of shaft construction using bentonite slurry in conjunction with a permanent surface casing will be necessary in these soil conditions.

Roller-type centralizers are required for construction of all drilled shafts. Under no circumstances shall the pitch of the spiral reinforcement be adjusted to accommodate the installation of the chosen centralizer device.
 Trial shafts shall be constructed as specified in section 803 of the specifications, prior to construction of any test shafts.

The trial shaft shall be constructed at locations shown on sheet no. 8005.
 The trial shaft will require the use of a temporary casing that shall be the same length as the casing specified for production shafts. The Contractor may reuse this casing in a production shaft.
 For computation of quantities, Top of Trial shaft shall be elev. 105.0 (approximate ground). Bottom of the trial shaft shall be elev. -40.0.

Trial shaft reinforcing steel shall be identical to the production shaft reinforcing steel as shown on sheet no. 8011.
 The length of trial shaft reinforcing steel cage shall be 145 ft.
 Test shafts shall be constructed at the locations and to the lengths shown in the TEST SHAFT SCHEDULE unless otherwise directed by the Director of Structures, State Bridge Engineer, and will be paid for as test shafts only.
 A loading test is required for each test shaft per details on sheet no. 8035 and shall be performed as specified in section 803 of the specifications.
 A draft copy of the load test report shall be submitted to the State Geotechnical Engineer within three (3) days of completion of the load test for each test shaft. The final test report shall be submitted to the Director of Structures, State Bridge Engineer, within thirty (30) days.

The load test shall be performed with a temporary casing of equal length to the length specified for production shaft casings.
 For additional test shaft requirements, see notes on sheet no. 8035.
 The tip elevation and quantities shown for production shafts in these plans are for estimating purposes only and may be raised or lowered depending on the outcome of a load test.
 The required ultimate shaft capacities shown in the REQUIRED ULTIMATE SHAFT CAPACITIES AND TIP ELEVATION SCHEDULE on this sheet include the LRFD resistance factors (associated with Extreme Event Limit State) of 1.0 and 0.80 for bearing and uplift, respectively.

INFORMATION PLANS:

Original Plans
 Project No. F.A.S. 13-A-(1), BRIDGE AT STA. 520+64.25 OVER SUNFLOWER RIVER.
 For original bridge plans, see INFORMATION PLANS on sheet nos. 8051-8056.

ESTIMATED QUANTITIES

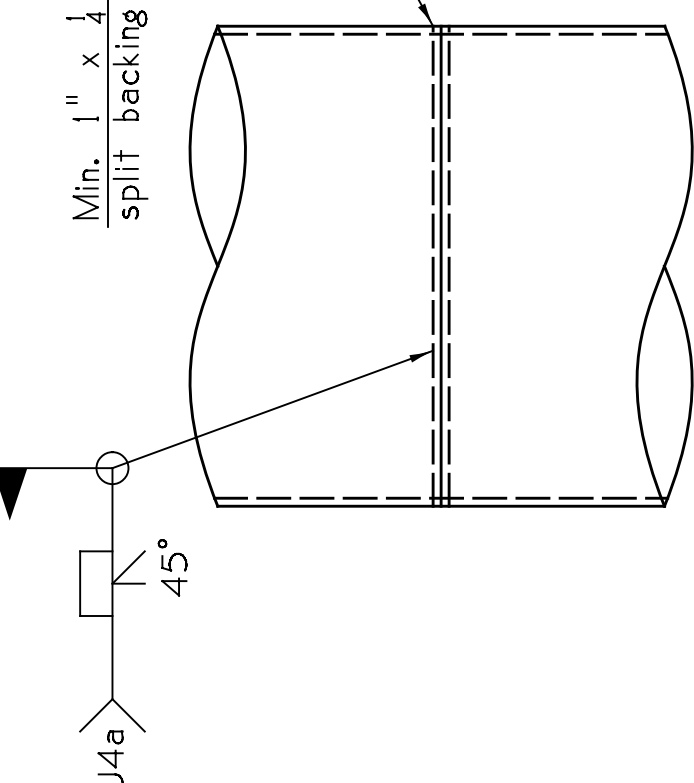
Item	Transverse Grooving	Conventional Static Pile Load Test	PDA Test Pile, Steel Pipe Pile	Pile Restrike	Drilled Shaft, 84" Diameter	Test Shaft, 84" Diameter	Trial Shaft, Diameter	Exploration ***	Permanent Casing, 84" Diameter	20" Steel Pipe, Wall Thickness 0.500	Bridge Concrete, Class "AA"	Bridge Concrete, Class "BD"	Reinforcement**	Structural Steel, A709, Grade 50W	Structural Steel, A709, Grade HPS 70W	Disc Bearing Device	Concrete Railing, 42" High	Loose RipRap, Size 300	Geotextile Under RipRap	7" Segmental Expansion Joint	
Location	S.Y.	Each	Each	Each	L.F.	L.F.	L.F.	L.F.	L.F.	L.F.	C.Y.	C.Y.	Lbs.	Lbs.	Lbs.	Each	L.F.	Ton	S.Y.	L.F.	
Spans	3,637.67																				
End Bents		1	4	4	900	1	145	90.0	300	2,720.0	304.43	1,152.53	334,849	2,321,681	338,644	8	1,818.83	680.0	349.4	82.8	
Int. Bents											204.20		21,612			8		3,053.5	1,810.6		
Totals	3,637.67	1	4	4	900	1	145	90.0	300	2,720.0	508.63	1,152.53	383,522	2,321,681	338,644	16	1,818.83	3,750.0	2,160.0	82.8	

PDA TEST PILE SCHEDULE

Location	Min. Length Feet	Tip Elevation
Bent No. 1	100	7.43
Bent No. 4	100	6.23
Sta. 516+75	100	7.00
Sta. 525+45	100	6.34

NOTE: If possible, PDA test piles shall be vertical piles.
 PDA test pile results for all bents must be submitted to the Director of Structures, State Bridge Engineer, before production pile lengths will be recommended.

① Indicator PDA test pile.



STEEL PIPE PILE SPICE DETAIL

84" SHAFTE REQUIRED ULTIMATE BEARING AND TIP ELEVATION SCHEDULE

Bent No.	Ultimate Moment (FT - Kips)	Ultimate Bearings (Tons)	Min. Tip Elev. For Uplift	Estimated Length (Ft.)	Controlling State	Limit Strength I	LRFD Resistance Factor
2	4682	2158	-54.5	160	Strength I	0.70	0.70
3	4682	2158	-35.0	140	Strength I	0.70	0.70

REQUIRED ULTIMATE PILE BEARING CAPACITY & MINIMUM PILE TIP ELEVATION SCHEDULE

Bent No.	Pile Size	Ultimate Bearings (Tons)	Min. Tip Elev.	Estimated Length (Ft.)	Controlling State	Limit Strength I	LRFD Resistance Factor
1	20" Pipe Pile	347	27.4	80	Strength I	0.65	0.65
4	20" Pipe Pile	347	26.2	80	Strength I	0.65	0.65

NOTE:
 All riprap and geotextile fabric for end bents and channel banks are included in the bridge quantities.

STEEL PIPE PILE NOTES:

All steel pipe piles shall be ASTM A252, Grade 3 (Fy=45,000 psi.) and shall be either seamless or spiral butt-welded.
 Steel pipe piles are intended to be open ended and shall be filled with concrete to a minimum of 15'-0" below existing ground.
 Welding shall comply with ANSI/AWS D1.5 Bridge Welding Code and be done by the ELECTRIC ARC process. Welders shall be certified and electrodes shall be approved. Production piles shall be driven to an elevation no higher than the elevation shown in the REQUIRED ULTIMATE PILE BEARING CAPACITY & MINIMUM PILE TIP ELEVATION SCHEDULE.

The required ultimate pile bearing shown in the REQUIRED ULTIMATE PILE BEARING CAPACITY & MINIMUM PILE TIP ELEVATION SCHEDULE includes the corresponding LRFD resistance factor of $\phi = 0.65$.

The tip elevation of piling, for hydraulic structures, may be determined by the scour line. Steel pipe piles shall be driven with a minimum rated energy no less than 76,000 ft-lbs to the tip elevations specified unless the Contractor's Drivability Analysis utilizing the Contractor's selected alternative hammer is approved by the Director of Structures, State Bridge Engineer.

PDA test piles shall be driven with an approved impact hammer as either an indicator PDA test pile, a PDA test pile, or production piles at the locations shown in the PDA TEST PILE SCHEDULE and will be paid for as test piles only.

The Director of Structures, State Bridge Engineer may authorize test piles driven outside the structural limits.

Pile hammer leads used for all PDA test piles and PDA restrikes shall be large enough to provide a minimum of 3" clearance on each side of the pile in order to properly place and protect PDA gauges and cables.

PDA test piles shall require a 1 day restrike unless otherwise directed by the Director of Structures, State Bridge Engineer.

The first PDA test pile driven shall be an indicator PDA test pile as shown on the FOUNDATION PLAN (Sheet No. 8005) and shall be paid for under item 803-1004, PDA test pile, steel pipe pile. The indicator PDA test pile shall be driven continuously using an approved impact hammer. The full length of the indicator PDA test pile shall be monitored using PDA.

The PDA monitored indicator test pile will be an out of position test pile driven with mandatory restrikes and PDA results analyzed prior to driving any PDA test piles. Based on the results of the PDA indicator pile, the plan lengths of the PDA test piles may change. Therefore, it is recommended to order PDA test piles after the analysis of the PDA indicator test pile is complete. The remaining PDA test piles shall be driven as a continuous operation to the bearing capacity and the minimum ground penetration shown in the PDA TEST PILE SCHEDULE, unless otherwise directed by the Director of Structures, State Bridge Engineer.

When loading tests are required, the maximum test load shall be one and one half (1½) times the minimum bearing capacity.
 Final production pile lengths and driving criteria shall be provided based on the results of the PDA test piles.

DESIGN DATA:

Specifications A.A.S.H.T.O., L.R.F.D. 2017
 Loading HL-93
 Roadway Width 40'-0" Gutter To Gutter
 Concrete (Superstructure) Class "BD" (4,000 p.s.i.)
 Concrete (Substructure) Class "AA" (4,000 p.s.i.)
 Drilled Shaft Concrete Class "DS" (4,000 p.s.i.)
 Reinforcing Steel Casing ASTM A615 Grade 60 (Fy = 60 ksi)
 Temporary Steel Casing ASTM A252, Grade 3 (Fy = 35 ksi)
 Structural Steel ASTM A709, Grade 50W (Fy = 50 ksi) and
 ASTM A709, Grade HPS 70W (Fy = 70 ksi)
 Stay-In-Place Form Allowance 18 psf

DRAINAGE DATA:

Seismic Performance Zone Zone 1
 Seismic Definition Site Class C
 Operational Importance Other

SPECIAL PROVISIONS REQUIRED:

Non-Destructive Testing Of Drilled Shafts No. 907-803
 Maturity Meters In Drilled Shafts No. 907-804
 Concrete Bridges And Structures No. 907-804 (supplement)
 Self-Consolidating Concrete For Drilled Shafts No. 907-810
 Weathering Structural Steel No. 907-811
 Disc Bearings No. 907-811
 Segmental Expansion Joint System No. 907-822

REVISIONS	NO.	DATE	DESCRIPTION
1	1	10/17/22	REV. QUANTITIES & PERM. CASING
2	2	7/23/24	ADD NOT. D.S. SPECIAL PROVISION
3	3	5/11/25	REV. STRUCTURAL STEEL QUANTITIES

DESIGNER: D. JOHNSON
 CHECKER: B. JOHNSON
 ISSUED DATE: 05/16/24
 PROJECT NO.: BR-0018-01(026)
 PROJECT: HUMPHREYS/WASHINGTON COUNTY
 WORKING NUMBER: 1 OF 33
 SHEET NUMBER: 8003

