

GENERAL INDEX

INCLUDED THIS PROJECT	BEGIN WITH SHEET
<input checked="" type="checkbox"/> ROADWAY.....	1
<input checked="" type="checkbox"/> PERMANENT SIGNS.....	1001
<input type="checkbox"/> TRAFFIC SIGNALS.....	2001
<input type="checkbox"/> ITS COMPONENTS.....	3001
<input type="checkbox"/> LIGHTING.....	4001
<input type="checkbox"/> (RESERVED).....	5001
<input checked="" type="checkbox"/> ROADWAY STD. DWGS.....	6001
<input type="checkbox"/> BOX CULVERT STD. DWGS (LRFD).....	7001
<input type="checkbox"/> BOX CULVERT STD. DWGS (STD. SPEC.).....	7501
<input type="checkbox"/> BRIDGE.....	8001
<input checked="" type="checkbox"/> CROSS SECTIONS.....	9001

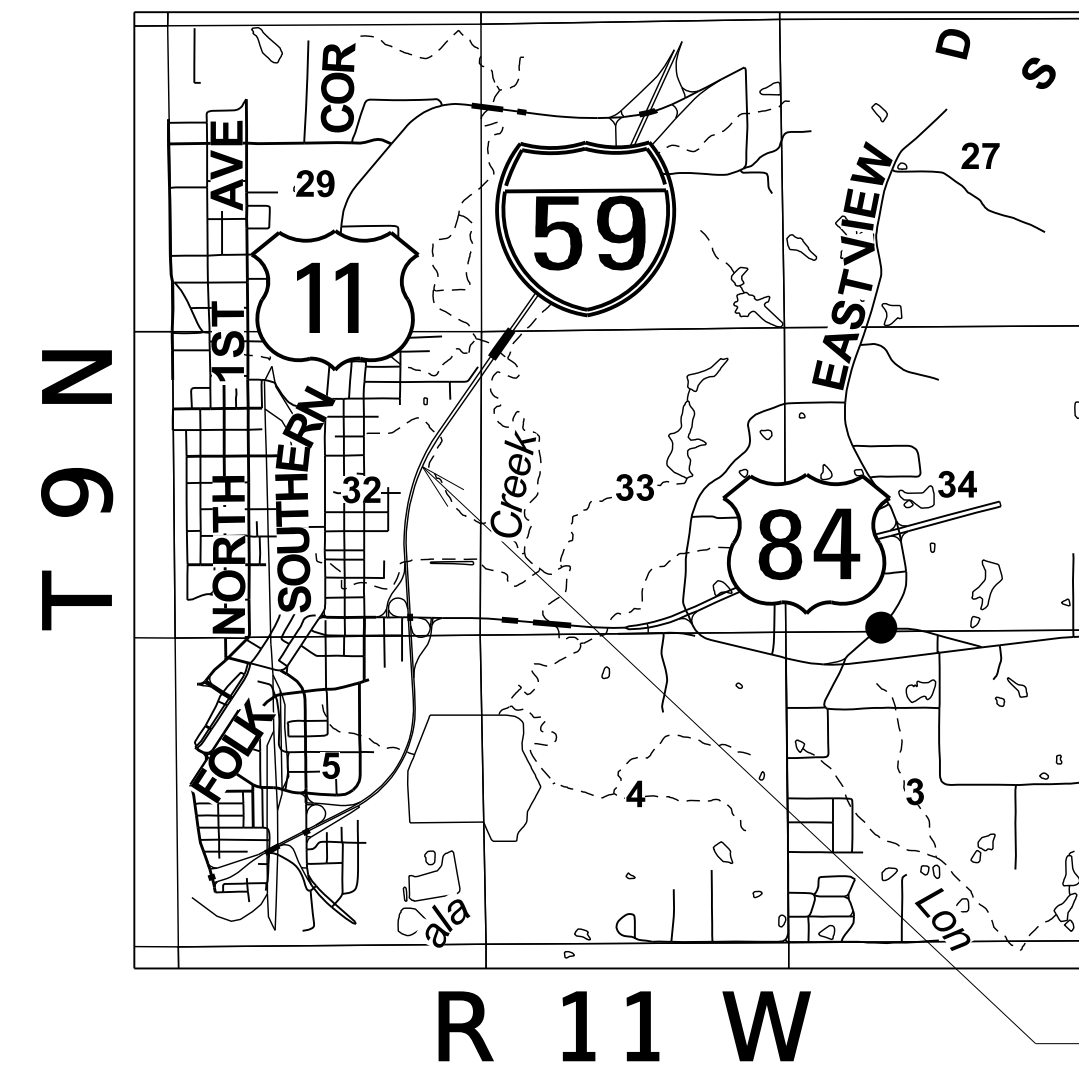
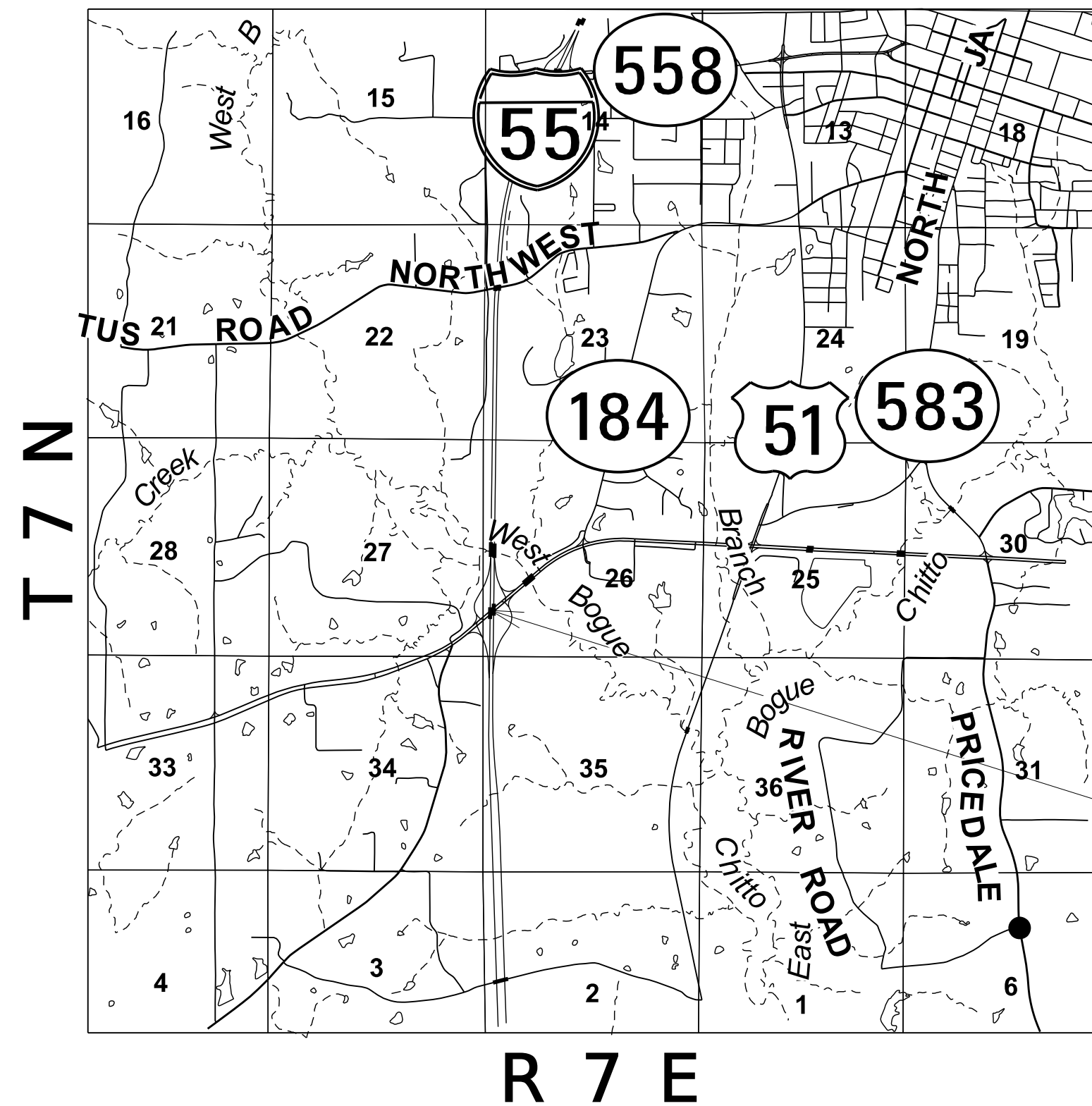
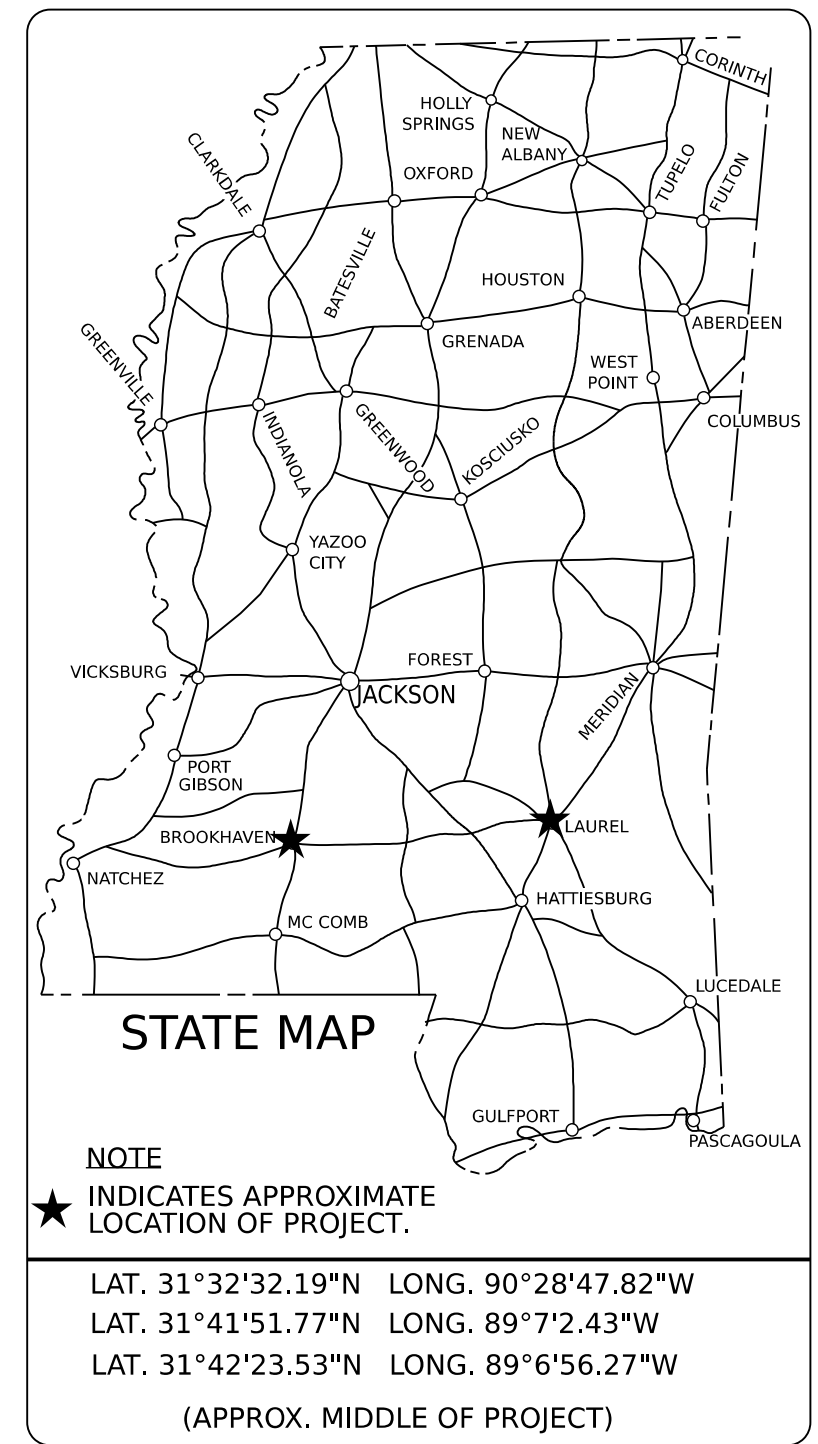
BRIDGE STRUCTURES REQ'D.
N/A

BOX BRIDGES REQ'D.
N/A

**STATE OF MISSISSIPPI
MISSISSIPPI DEPARTMENT OF TRANSPORTATION**

**PLAN AND PROFILE OF
PROPOSED STATE HIGHWAY
FEDERAL AID PROJECT NO. NHPP-0055-01(128)**

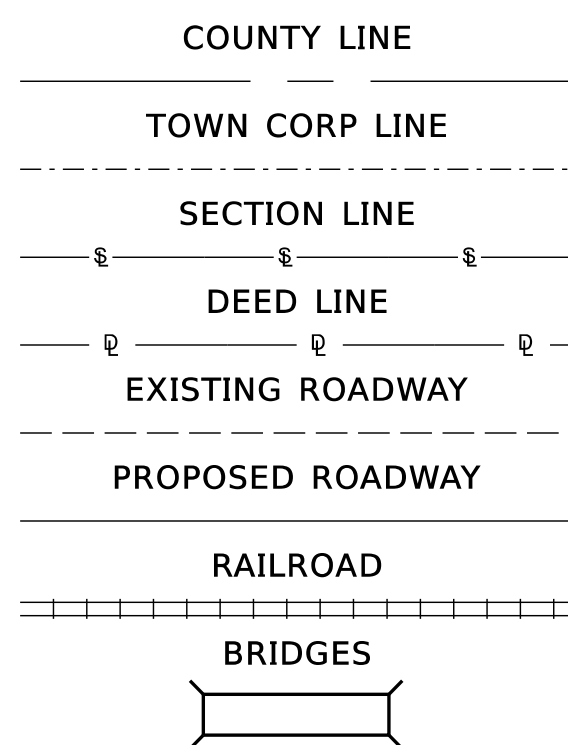
**I-55 RAMP GATES INSTALLATION FROM LA STATE LINE TO US 84
I-59 RAMP GATES INSTALLATION FROM LA STATE LINE TO US 84
US 84 & US 61 INTERCHANGE
US 84 & US 45 INTERCHANGE
LINCOLN, PIKE, FORREST, JONES, LAMAR,
PEARL RIVER, ADAMS, AND WAYNE COUNTIES**



- 109436/301000 - LINCOLN
- 109436/302000 - PIKE
- 109436/303000 - FORREST
- 109436/304000 - JONES
- 109436/305000 - LAMAR
- 109436/306000 - PEARL RIVER
- 109436/307000 - ADAMS
- 109436/308000 - WAYNE

DESIGN CONTROL	
MPH = V (SPEED DESIGN)	
ADT () =	: ADT () =
DHV =	: D = % T = %
PERMITS ACQUIRED BY MDOT	
WETLANDS AND WATERS PERMITS	
NATIONWIDE #14	WATERS WETLANDS <input checked="" type="checkbox"/>
NATIONWIDE (OTHER)*	<input checked="" type="checkbox"/>
GENERAL*	<input checked="" type="checkbox"/>
INDIVIDUAL (404)*	<input checked="" type="checkbox"/>
STORMWATER PERMIT <input checked="" type="checkbox"/>	
Y REQUIRED, CNOI SUBMITTED BY MDOT (DISTURBED AREA=5 ACRES)	
S REQUIRED, SCNOI TO BE SUBMITTED BY CONTRACTOR (1 TO 4.99 ACRES)	
N NO STORMWATER PERMIT REQUIRED (<1 ACRE)	
APPROVED BY: _____	

CONVENTIONAL SYMBOLS



LENGTH DATA		
LENGTH OF ROADWAY	FT.	MI.
LENGTH OF BRIDGES	FT.	MI.
LENGTH OF PROJECT (NET)	FT.	MI.
LENGTH OF EXCEPTIONS	FT.	MI.
LENGTH OF PROJECT (GROSS)	FT.	MI.

EQUATIONS

SCALES

PLAN	1 IN. = 100 FT.
PROFILE	{ HOR. 1 IN. = 100 FT.
	{ VERT. 1 IN. = 10 FT.
LAYOUT	1 IN. = FT.

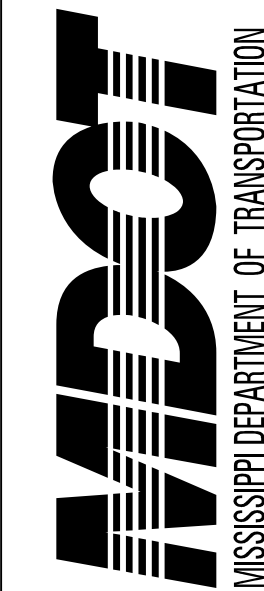
EXCEPTIONS

TITLE SHEET

11/4/2024 4:56:52 PM TITLE_SH.dgn



DESIGNED BY: MCCARTHY	
CONSTRUCTION PROJECT DATA	
EXTERNAL PROJECT NUMBER	NHPP-0055-01(128)
FMS & DETAIL	109436/301000, 109436/302000, 109436/303000, 109436/304000, 109436/305000, 109436/306000, 109436/307000, 109436/308000
P S & E DATE:	
APPROVED:	
DEPUTY EXECUTIVE DIRECTOR / CHIEF ENGINEER	
EXECUTIVE DIRECTOR	



DESIGNED BY: MCCARTHY
 DETAILED BY:
 CHECKED BY:
 DATE:

FMS CON: 109436/301000, 109436/302000, 109436/303000, 109436/304000, 109436/305000, 109436/306000
 PROJECT NO.: NHPP-0055-01(128)
 COUNTY: LINCOLN, PIKE, FORREST, JONES, LAMAR, PEARL RIVER

DETAILED INDEX

SHEET ID
DI-1
 SHEET NO.
2

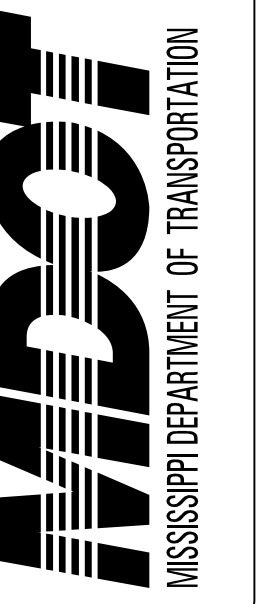
DESCRIPTION OF SHEET	WK. NO.	SH. NO.
TITLE SHEET (1)		1
DETAILED INDEX, SUMMARY OF REVISIONS & GENERAL NOTES (5)		
DETAILED INDEX	DI-1	2
DETAILED INDEX	DI-2	3
SUMMARY OF REVISIONS	REV-1	4
GENERAL NOTES	GN-1	5
GENERAL NOTES	GN-2	6
TYPICAL SECTION (3)		
TYPICAL SECTION-I-55 SW ENTRANCE RAMP	TS-1	7
TYPICAL SECTION- I-55 SW ENTRANCE RAMP & US-84 CROSSOVER	TS-2	8
TYPICAL SECTION-I-59 MEDIAN CROSSOVER	TS-3	9
SUMMARY OF QUANTITY SHEETS (11)		
SUMMARY OF QUANTITIES - LINCOLN COUNTY	SQ-1	10
SUMMARY OF QUANTITIES - LINCOLN COUNTY	SQ-2	11
SUMMARY OF QUANTITIES - PIKE COUNTY	SQ-3	12
SUMMARY OF QUANTITIES - FORREST COUNTY	SQ-4	13
SUMMARY OF QUANTITIES - JONES COUNTY	SQ-5	14
SUMMARY OF QUANTITIES - LAMAR COUNTY	SQ-6	15
SUMMARY OF QUANTITIES - PEARL RIVER COUNTY	SQ-7	16
SUMMARY OF QUANTITIES - ADAMS COUNTY	SQ-8	17
SUMMARY OF QUANTITIES - WAYNE COUNTY	SQ-9	18
SUMMARY OF QUANTITIES - PROJECT TOTALS	SQ-10	19
SUMMARY OF QUANTITIES - PROJECT TOTALS	SQ-11	20
ESTIMATED QUANTITY SHEETS (29)		
ESTIMATED QUANTITIES - I-55 SW ENTRANCE RAMP & US-84 CROSSOVER	EQ-1	21
ESTIMATED QUANTITIES - I-55 SW ENTRANCE RAMP & US-84 CROSSOVER	EQ-2	22
ESTIMATED QUANTITIES - EARTHWORK & EROSION CONTROL I-59 MEDIAN CROSSOVER	EQ-3	23
ESTIMATED QUANTITIES - REMOVAL ITEMS I-59 MEDIAN CROSSOVER	EQ-4	24
I-55 / I-59 CONTRAFLOW - MISSISSIPPI ESTIMATED QUANTITIES	EQ-5	25
I-55 / I-59 CONTRAFLOW - MISSISSIPPI ESTIMATED QUANTITIES	EQ-6	26
I-55 / I-59 CONTRAFLOW - MISSISSIPPI ESTIMATED QUANTITIES	EQ-7	27
I-55 / I-59 CONTRAFLOW - MISSISSIPPI ESTIMATED QUANTITIES	EQ-8	28
I-55 / I-59 CONTRAFLOW - MISSISSIPPI ESTIMATED QUANTITIES	EQ-9	29
I-55 / I-59 CONTRAFLOW - MISSISSIPPI ESTIMATED QUANTITIES	EQ-10	30
I-55 / I-59 CONTRAFLOW - MISSISSIPPI ESTIMATED QUANTITIES	EQ-11	31
I-55 / I-59 CONTRAFLOW - MISSISSIPPI ESTIMATED QUANTITIES	EQ-12	32
I-55 / I-59 CONTRAFLOW - MISSISSIPPI ESTIMATED QUANTITIES	EQ-13	33
I-55 / I-59 CONTRAFLOW - MISSISSIPPI ESTIMATED QUANTITIES	EQ-14	34
I-55 / I-59 CONTRAFLOW - MISSISSIPPI ESTIMATED QUANTITIES	EQ-15	35
I-55 / I-59 CONTRAFLOW - MISSISSIPPI ESTIMATED QUANTITIES	EQ-16	36
I-55 / I-59 CONTRAFLOW - MISSISSIPPI ESTIMATED QUANTITIES	EQ-17	37
I-55 / I-59 CONTRAFLOW - MISSISSIPPI ESTIMATED QUANTITIES	EQ-18	38
I-55 / I-59 CONTRAFLOW - MISSISSIPPI ESTIMATED QUANTITIES	EQ-19	39
I-55 / I-59 CONTRAFLOW - MISSISSIPPI ESTIMATED QUANTITIES	EQ-20	40
I-55 / I-59 CONTRAFLOW - MISSISSIPPI ESTIMATED QUANTITIES	EQ-21	41
I-55 / I-59 CONTRAFLOW - MISSISSIPPI ESTIMATED QUANTITIES	EQ-22	42
I-55 / I-59 CONTRAFLOW - MISSISSIPPI ESTIMATED QUANTITIES	EQ-23	43
I-55 / I-59 CONTRAFLOW - MISSISSIPPI ESTIMATED QUANTITIES	EQ-24	44
I-55 / I-59 CONTRAFLOW - MISSISSIPPI ESTIMATED QUANTITIES	EQ-25	45
I-55 / I-59 CONTRAFLOW - MISSISSIPPI ESTIMATED QUANTITIES	EQ-26	46
I-55 / I-59 CONTRAFLOW - MISSISSIPPI ESTIMATED QUANTITIES	EQ-27	47
ESTIMATED QUANTITIES - MILE MARKER SIGN AREA & SQUARE TUBE POST LENGTH	EQ-28	48
TRAFFIC CONTROL SIGNS - ESTIMATED QUANTITIES	TCP-Q	49
PLAN / PROFILE SHEETS (4)		
I-55 SW ENTRANCE RAMP - WIDENING	WK-3	50
I-55 SW ENTRANCE RAMP - WIDENING	WK-4	51
US-84 CROSSOVER - WIDENING	WK-5	52
I-59 MEDIAN CROSSOVER	WK-6	53
SPECIAL DESIGN SHEETS (25)		
PAVEMENT MARKING DETAIL - I-55 SW ENTRANCE RAMP & US-84 CROSSOVER	PMD-1	54
INTERSECTION DETAIL - I-55 SW ENTRANCE RAMP AND US-84 CROSSOVER	ID-1	55
INTERSECTION DETAIL - I-59 MEDIAN CROSSOVER	ID-2	56
FORM GRADES - I-55 SW ENTRANCE RAMP	FG-1	57

DESCRIPTION OF SHEET	WK. NO.	SH. NO.
FORM GRADES - I-55 SW ENTRANCE RAMP	FG-2	58
FORM GRADES - I-55 SW ENTRANCE RAMP	FG-3	59
FORM GRADES - I-55 SW ENTRANCE RAMP	FG-4	60
FORM GRADES - US-84 CROSSOVER	FG-5	61
FORM GRADES - I-59 MEDIAN CROSSOVER	FG-6	62
DETAILED CONSTRUCTION SIGNS - I-55		
DETAILED CONSTRUCTION SIGNS - US-84	DCS-1	63
DETAILED CONSTRUCTION SIGNS - I-55	DCS-2	64
DETAILED CONSTRUCTION SIGNS - I-55	DCS-3	65
DETAIL OF CONSTRUCTION SIGNING - I-59 MEDIAN CROSSOVER	DCS-4	66
TRAFFIC CONTROL - PHASE 1		
I-55 SB DETOUR PLAN FOR PHASES 2 AND 3	TC-1	67
I-55 SB DETOUR PLAN FOR PHASES 2 AND 3	TC-2	68
I-55 SB DETOUR PLAN FOR PHASES 2 AND 3	TC-3	69
TRAFFIC CONTROL - PHASE 2	TC-4	70
TRAFFIC CONTROL - RAMP - PHASE 2	TC-5	71
TRAFFIC CONTROL - RAMP - PHASE 2	TC-6	72
TRAFFIC CONTROL - RAMP - PHASE 2	TC-7	73
TRAFFIC CONTROL - PHASE 3	TC-8	74
TRAFFIC CONTROL - PHASE 3	TC-9	75
DISTRICT 6 OR 7 VEGETATION SCHEDULE RURAL- GRADE, DRAIN, AND PAVE PROJECTS		
2.5" SQUARE TUBE POST	TSS-1	77
2.0" SQUARE TUBE POST	TSS-2	78
PERMANENT SIGNING PLANS (63)		
EXIT 1 (NON-SERVICE INTERCHANGE)	I55-C1	1001
SCALES (JUST NORTH OF EXIT 1) (NORTHBOUND)	I55-C2	1002
SCALES (JUST NORTH OF EXIT 1) (SOUTHBOUND)	I55-C3	1003
WELCOME CENTER LOCATED JUST NORTH OF EXIT 1	I55-C4	1004
EXIT 4 (CHATAWA RD) (NON-SERVICE INTERCHANGE)	I55-C5	1005
EXIT 8 (MS 568) (NON-SERVICE INTERCHANGE)	I55-C6	1006
EXIT 10 (SERVICE INTERCHANGE) (NB ONLY)	I55-C7	1007
EXIT 13 (SERVICE INTERCHANGE)	I55-C8	1008
EXITS 15A & B (US 98 EAST) (SERVICE INTERCHANGE) (NB ONLY)	I55-C9	1009
EXIT 17 (SERVICE INTERCHANGE)	I55-C10	1010
EXIT 18 (SERVICE INTERCHANGE)	I55-C11	1011
EXITS 20A & B (US 98 WEST) (SERVICE INTERCHANGE)	I55-C12	1012
EXIT 24 (NON-SERVICE INTERCHANGE)	I55-C13	1013
EXIT 30 (NON-SERVICE INTERCHANGE)	I55-C14	1014
EXIT 38 (US 84) (NORTHBOUND)	I55-C15	1015
EXIT 38 (US 84) (SOUTHBOUND)	I55-C16	1016
INTERSECTION OF US 61 AND US 98	I55-C17	1017
EXIT 1 (SERVICE INTERCHANGE)	I59-C18	1018
SCALES (JUST NORTH OF EXIT 1)	I59-C19	1019
WELCOME CENTER (JUST SOUTH OF PICAYUNE)	I59-C20	1020
EXIT 4 (SERVICE INTERCHANGE)	I59-C21	1021
EXIT 6 (SERVICE INTERCHANGE)	I59-C22	1022
EXIT 10 (NON-SERVICE INTERCHANGE)	I59-C23	1023
EXIT 15 (SERVICE INTERCHANGE)	I59-C24	1024
EXIT 19 (NON-SERVICE INTERCHANGE)	I59-C25	1025
EXIT 27 (SERVICE INTERCHANGE)	I59-C26	1026
EXIT 29 (SERVICE INTERCHANGE)	I59-C27	1027
EXIT 35 (NON-SERVICE INTERCHANGE)	I59-C28	1028
EXIT 41 (SERVICE INTERCHANGE)	I59-C29	1029
EXIT 51 (SERVICE INTERCHANGE)	I59-C30	1030
REST AREA (JUST SOUTH OF HATTIESBURG)	I59-C31	1031
EXIT 59 (SERVICE INTERCHANGE)	I59-C32	1032
US 49 / US 98	I59-C33	1033
EXIT 60 (SERVICE INTERCHANGE)	I59-C34	1034
EXIT 65 (SERVICE INTERCHANGE)	I59-C35	1035
EXIT 67 (SERVICE INTERCHANGE, CLOSED ON CONTRAFLOW SIDE DUE TO GEOMETRICS)	I59-C36	1036
EXIT 69 (SERVICE INTERCHANGE)	I59-C37	1037
EXIT 73 (NON-SERVICE INTERCHANGE)	I59-C38	1038
EXIT 76 (NON-SERVICE INTERCHANGE)	I59-C39	1039
EXIT 78 (NON-SERVICE INTERCHANGE)	I59-C40	1040
EXIT 80 (NON-SERVICE INTERCHANGE)	I59-C41	1041
EXIT 85 (SERVICE INTERCHANGE)	I59-C42	1042
EXIT 88 (SERVICE INTERCHANGE)	I59-C43	1043
EXIT 90 (SERVICE INTERCHANGE)	I59-C44	1044
EXIT 93 (NON-SERVICE INTERCHANGE)	I59-C45	1045
EXIT 95A (SERVICE INTERCHANGE)	I59-C46	1046
EXIT 95C (SERVICE INTERCHANGE)	I59-C47	1047
EXIT 96A - 4TH AVE & MASONITE DR (NON-SERVICE INTERCHANGE)	I59-C48	1048

PLAN SHEET

11/4/2024 4:56:58 PM Di.dgn

DESCRIPTION OF SHEET	WK. NO.	SH. NO.
EXIT 96B - SR 15 S / COOK AVE (NON-SERVICE INTERCHANGE)	I59-C49	1049
EXIT 97 - US 84 / CHANTILLY ST - ALL NB TRAFFIC MUST EXIT	I59-C50	1050
EXIT 99 - US 11 / N LAUREL (ALL SB TRAFFIC MUST EXIT)	I59-C51	1051
INTERSECTION OF US 98 AND US 45	I59-C52	1052
I-55 / I-59 CONTRAFLOW - MISSISSIPPI MISCELLANEOUS SIGNING DETAILS	MSD-1	1053
I-55 / I-59 CONTRAFLOW - MISSISSIPPI MISCELLANEOUS SIGNING DETAILS	MSD-2	1054
I-55 / I-59 CONTRAFLOW - MISSISSIPPI MISCELLANEOUS SIGNING DETAILS	MSD-3	1055
I-55 / I-59 CONTRAFLOW - MISSISSIPPI MISCELLANEOUS SIGNING DETAILS	MSD-4	1056
I-55 / I-59 CONTRAFLOW - MISSISSIPPI MISCELLANEOUS SIGNING DETAILS	MSD-5	1057
I-55 / I-59 CONTRAFLOW - MISSISSIPPI MISCELLANEOUS SIGNING DETAILS	MSD-6	1058
I-55 / I-59 CONTRAFLOW - MISSISSIPPI MISCELLANEOUS SIGNING DETAILS	MSD-7	1059
I-55 / I-59 CONTRAFLOW - MISSISSIPPI MISCELLANEOUS SIGNING DETAILS	MSD-8	1060
I-55 / I-59 CONTRAFLOW - MISSISSIPPI MISCELLANEOUS SIGNING DETAILS	MSD-9	1061
MISCELLANEOUS SIGNING DETAILS - DOUBLE FACED MILE MARKER	MSD-10	1062
I-55 / I-59 DROP GATE DETAILS	DGD-1	1063
STANDARD DRAWING - ROADWAY SHEETS (25)		
PAVEMENT MARKING DETAILS FOR INTERCHANGE ENTRANCE RAMPS (PARALLEL AND TAPER)	PM-3	6053
PAVEMENT MARKING LEGEND DETAILS	PM-6	6056
TYPICAL PAVEMENT MARKING DETAIL FOR MEDIAN CROSSOVERS	PM-9	6059
TYPICAL TEMPORARY EROSION/SEDIMENT CONTROL APPLICATIONS	ECD-1	6101
DETAILS OF SILT FENCE INSTALLATION	ECD-3	6103
DITCH CHECK STRUCTURES, TYPICAL APPLICATIONS AND DETAILS	ECD-4	6104
TYMPORARY EROSION, SEDIMENT, AND WATER POLLUTION CONTROL MEASURES (SILT FENCE AND HAY BALE DITCH CHECKS)	ECD-5	6105
DETAILS OF EROSION CONTROL WATTLE DITCH CHECK	ECD-6	6106
TYPICAL APPLICATIONS AND DETAILS FOR INLET CONSTRUCTION	ECD-11	6111
INLET PROTECTION DETAILS OF WATTLES	ECD-13	6113
STANDARD ROADSIDE SIGNS	SN-3	6303
STANDARD ROADSIDE SIGN ASSEMBLY AND INSTALLATION	SN-4	6306
TYPICAL INSTALLATION AND DETAILS OF DELINEATORS AND DISTANCE REFERENCE SIGNS	SN-8	6314
TYPICAL INSTALLATION OF DELINEATORS	SN-8A	6315
TYPICAL CROSSOVER DELINEATION	SN-8B	6316
TRAFFIC CONTROL PLAN FOR POSTED SPEED LIMIT LESS THAN 65 MPH (4-LANE: MEDIAN LANE OR OUTSIDE LANE CLOSURE) (WORK DAY ONLY)	TCP-2	6352
TRAFFIC CONTROL PLAN FOR POSTED SPEED LIMIT LESS THAN 65 MPH (4-LANE: MEDIAN LANE OR OUTSIDE LANE CLOSURE) (EXTENDED PERIOD)	TCP-3	6353
LOCATION OF R16-3 SIGNS (SPEEDING FINES DOUBLED)	TCP-15	6365
TRAFFIC CONTROL DETIALS DRUM PLACEMENT AND SHOULDER CLOSURE	TCP-16	6366
DRIVEWAYS, CURB & GUTTER, & SIDEWALK	SD-1	6419
PIPE CULVERT INSTALLATION	PI-1	6501
CONCRETE PIPE COLLAR	PC-1	6503
TYPE I MEDIAN INLET (24" PIPE AND UNDER)	MI-1	6508
DETAILS OF GRATES FOR MEDIAN INLETS	IG-1	6516
PAVED INLET APRON AND MEDIAN DITCH PLUG	PA-1	6520
CROSS SECTIONS (14)		
I-55 SW ENTRANCE RAMP STA. 17+84.39 TO STA. 25+72.14		9001-9005
I-55 SW ENTRANCE RAMP STA. 100+00.33 TO STA. 102+50.00		9006-9007
US 84 MEDIAN CROSSOVER STA 1233+06.66 TO STA. 1232+99.30		9008-9009
US 84 MEDIAN CROSSOVER ALONG PIPE		9010
I-59 MEDIAN CROSSOVER STA. 680+00.00 TO STA. 685+00.00		9011-9014
TOTAL SHEETS = 180		



DESIGNED BY: MCCARTHY
 DETAILED BY:
 CHECKED BY:
 DATE:

FMS CON: 109436/301000, 109436/302000, 109436/303000, 109436/304000, 109436/305000, 109436/306000
 PROJECT NO.: NHPP-0055-01(128)
 COUNTY: LINCOLN, PIKE, FORREST, JONES, LAMAR, PEARL RIVER

DETAILED INDEX



SUMMARY OF REVISIONS						
DATE	1st ORDER	ADDENDUM	2nd ORDER	BY	SHEET ID	DESCRIPTION

DESIGNED BY: MCCARTHY

DETAILED BY:

CHECKED BY:

DATE:

FMS CON: 109436/1000, 109436/302000, 109436/3000, 109436/504000, 109436/305000, 109436/306000

PROJECT NO.: NHPP-0055-01(128)

COUNTY: LINCOLN, PIKE, FORREST, JONES, LAMAR, PEARL RIVER

SUMMARY OF REVISIONS

SHEET ID
REV-1

SHEET NO.
4

GENERAL NOTES



DESIGNED BY: MCCARTHY
DETAILED BY:
CHECKED BY:
DATE: 8/2/2024

FMS CON: 109436/301000, 109436/302000, 109436/303000, 109436/304000, 109436/305000, 109436/306000
PROJECT NO.: NHPP-0055-01(128)
COUNTY: LINCOLN, PIKE, FORREST, JONES, LAMAR, PEARL RIVER

GENERAL NOTES

SHEET ID GN-1
SHEET NO. 5

BRIDGES AND WALLS

1. STORAGE OF FLAMMABLE MATERIALS WILL NOT BE ALLOWED UNDER ANY BRIDGE STRUCTURES WITHOUT WRITTEN APPROVAL FROM THE PROJECT ENGINEER. SEE NOTICE TO BIDDERS ENTITLED "MATERIAL STORAGE UNDER BRIDGES" FOR MORE INFORMATION

DRAINAGE STRUCTURES

2. ALL PIPE JOINTS ARE TO BE WRAPPED IN 24-INCH WIDE TYPE V GEOTEXTILE FABRIC. ALL PICKUP HOLES SHALL BE PLUGGED AND COVERED WITH TYPE V GEOTEXTILE FABRIC, THE COST OF WHICH SHALL BE ABSORBED IN OTHER ITEMS BID.

3. CURB AND GUTTER VERTICAL DIMENSIONS SHOWN IN THE DETAIL DRAWINGS ARE FOR A CURB IN THE "CATCH" CONFIGURATION AND SHALL BE CONSIDERED TO BE MINIMUM DIMENSIONS. THE DIMENSIONS MAY BE MODIFIED AS NECESSARY FOR "SPILL" CURB AND GUTTER, BUT SHALL NOT BE LESS THAN THE MINIMUM SHOWN.

4. THE COST FOR REMOVAL OF ALL HEADWALLS AND WINGWALLS (PIPES, BOX CULVERTS, BOX BRIDGES) SHALL BE ABSORBED IN OTHER ITEMS BID.

5. THE CONTRACTOR SHALL BE RESPONSIBLE FOR PROTECTING EXISTING STRUCTURES SUCH AS, BUT NOT LIMITED TO, PIPES, INLETS, APRONS, AND BRIDGES FROM DAMAGE WHICH MIGHT OCCUR DURING CONSTRUCTION. THE CONTRACTOR SHALL REPLACE OR REPAIR, AS DIRECTED BY THE ENGINEER, ANY STRUCTURES DAMAGED DURING THE LIFE OF THE CONTRACT. NO PAYMENT WILL BE MADE FOR REPLACEMENT OR REPAIR OF DAMAGED ITEMS.

EARTHWORK

6. 25% SHRINKAGE FACTOR USED IN THE EARTHWORK CALCULATIONS IS FOR DESIGN ESTIMATING PURPOSES ONLY.

7. THE TOP THREE FEET AND VARIABLE OF THE DESIGN SOILS (BOTH NATURAL AND EMBANKMENT) SHALL BE CONSTRUCTED OF SOIL CLASSIFIED AS B9-6 OR BETTER, PER MDOT SPECIFICATION 703.21, AT THE INTERSTATE 55 AND US HIGHWAY 84 INTERCHANGE IMPROVEMENTS, AND B7 OR BETTER, PER MDOT SPECIFICATION 703.21, AT THE INTERSTATE 59 MEDIAN CROSSOVER IMPROVEMENT. FOR ADDITIONAL DETAILS THE CONTRACTOR IS REFERRED TO THE NOTICE TO BIDDERS ON DESIGN SOIL MATERIAL IN THE CONTRACT PROPOSAL DOCUMENT.

8. VOIDS CREATED BY THE REMOVAL OF, BUT NOT LIMITED TO, POSTS, CONCRETE ANCHORS, AND FOOTINGS SHALL BE BACKFILLED AND TAMPED IN ACCORDANCE WITH SECTION 203 OF THE MISSISSIPPI STANDARD SPECIFICATIONS FOR ROAD AND BRIDGE CONSTRUCTION, THE COST OF WHICH WILL BE ABSORBED IN OTHER ITEMS BID.

9. SMALL AMOUNTS OF EXCAVATION MAY BE NECESSARY AT SOME OF THE SITES. THIS MATERIAL MAY BE USED AS E.S.F.E. MATERIAL AND WILL BE PAID FOR AS BORROW. NO E.S.F.E. MATERIALS SHALL BE REMOVED FROM THE PROJECT WITHOUT THE APPROVAL OF THE ENGINEER.

10. VEGETATIVE MATERIAL WILL BE REMOVED PRIOR TO PLACEMENT OF GRANULAR MATERIAL. THE COST OF WHICH SHALL BE ABSORBED IN OTHER ITEMS BID.

ENVIRONMENTAL & CLEARING

11. NO TEMPORARY CULVERT STREAM CROSSINGS WILL BE ALLOWED.

EROSION CONTROL - TEMPORARY

12. WIRE FENCE BACKING WILL BE REQUIRED FOR ALL SILT FENCE. (SEE WK. NO. ECD-3)

13. THE EROSION CONTROL DEVICES REFERENCED IN THESE PLANS ARE A MINIMUM REQUIREMENT. IT IS THE RESPONSIBILITY OF THE CONTRACTOR TO ENSURE THAT SILT DOES NOT LEAVE THE RIGHT OF WAY OR CONTAMINATE WATERS OF THE U.S. DURING CONSTRUCTION. THE CONTRACTOR SHALL SUBMIT AN EROSION CONTROL PLAN PRIOR TO COMMENCEMENT OF WORK AND MAINTAIN THE PLAN DURING CONSTRUCTION. ANY ADDITIONAL SILT BASINS NOT SHOWN IN THE PLANS SHALL BE INCLUDED IN THE CONTRACTORS EROSION CONTROL PLAN PRIOR TO SUBMITTING FOR APPROVAL.

PAVEMENT, BASE, AND SHOULDERS

14. THE CONTRACTOR SHALL REPAIR ANY DAMAGE TO THE PAVED OR UNPAVED SHOULDER THAT MIGHT OCCUR DURING CONSTRUCTION. ANY REPAIR TO SHOULDER WILL BE IN ACCORDANCE WITH THE APPLICABLE SECTIONS OF THE MISSISSIPPI STANDARD SPECIFICATIONS FOR ROAD AND BRIDGE CONSTRUCTION. NO PAYMENT WILL BE MADE FOR REPAIR OF DAMAGED SHOULDER.

15. WHERE MILLING IS REQUIRED, THE CONTRACTOR SHALL PROVIDE OUTLETS IN THE EXISTING SHOULDERS AT SUFFICIENT INTERVALS TO PREVENT POOLING OR STANDING WATER ON THE MILLED SURFACE, THE COST OF WHICH SHALL BE ABSORBED IN OTHER ITEMS BID.

PLANS

16. IF COLORS ARE USED ON PLAN/PROFILE SHEETS, THEY ARE INTENDED TO VISUALLY EASE THE LOCATION OF ELEMENTS FOR USERS OF THESE DRAWINGS. ALTHOUGH THE INTENT IS TO CATEGORIZE EVERYTHING AS EITHER EXISTING OR PROPOSED, IT IS THE END USER'S RESPONSIBILITY TO ENSURE ALL ELEMENTS ARE INTERPRETED CORRECTLY, REGARDLESS OF COLOR.

17. ALL ADDENDA TO THESE PLANS WILL BE POSTED TO WWW.MDOT.MS.GOV UNDER THE PROPOSAL ADDENDA COLUMN. BIDDERS ARE ADVISED THAT HARD COPIES OF ADDENDA FOR THIS PROJECT WILL NOT BE MAILED. IT IS THE BIDDER'S RESPONSIBILITY TO CHECK AND SEE IF ANY ADDENDA HAVE BEEN POSTED FOR THIS PROJECT.

TRAFFIC CONTROL - PERMANENT

18. INSTALLATION DATES SHALL BE CLEARLY WRITTEN IN BOLD BLACK MARKINGS ON THE BACK BOTTOM HALF OF ALL SIGNS WITH A PERMANENT MARKING STICK THAT IS WATERPROOF, FADE RESISTANT AND MARKS ON WET OR DRY SURFACES.

19. ALL POST, PIPE, AND I-BEAM LENGTHS IN THESE PLANS ARE ESTIMATES. POST LENGTHS FOR ALL SIGNS SHALL BE VERIFIED IN THE FIELD BY THE CONTRACTOR PRIOR TO FABRICATION.

20. DIRECT-APPLIED LEGEND, BORDER, AND/OR SHIELDS ARE TO BE USED ON ALL SIGNS. DIGITALLY PRODUCED SIGN COPY, SHIELDS, LEGEND, SYMBOLS, OR IMAGES WILL NOT BE ALLOWED WITHOUT WRITTEN APPROVAL FROM MDOT'S PROJECT ENGINEER.

21. ALL PERMANENT SIGNS SHALL CONFORM TO THE LATEST EDITION OF THE MANUAL ON UNIFORM TRAFFIC CONTROL DEVICES.

22. ALL SIGN LOCATIONS SHALL BE APPROVED BY THE PROJECT ENGINEER PRIOR TO INSTALLATION.

23. THE RETROREFLECTIVE SIGN SHEETING ON PERMANENT GROUND-MOUNTED SIGNS SHALL BE AS FOLLOWS: BROWN BACKGROUND SHEETING ON GUIDE SIGNS SHALL BE MINIMUM TYPE VIII; GREEN AND BLUE BACKGROUND SHEETING ON GUIDE SIGNS SHALL BE MINIMUM TYPE IX; ALL WHITE, YELLOW, FLOURESCENT YELLOW AND FLOURESCENT YELLOW/GREEN SHEETING SHALL BE TYPE XI. ALL SIGN SHEETING ON OVERHEAD SIGNS SHALL BE TYPE XI.

24. ALL EXISTING SIGNS AND SUPPORTS REMOVED UNDER THIS PROJECT SHALL BECOME THE PROPERTY OF THE CONTRACTOR AND ARE NOT A SEPARATE PAY ITEM.

25. REMOVAL OF RAISED PAVEMENT MARKERS THAT ARE IN CONFLICT WITH REQUIRED CONSTRUCTION IS NOT CONSIDERED A SEPARATE PAY ITEM. COST TO BE ABSORBED IN OTHER ITEMS BID.

26. REMOVAL OF OBJECT MARKERS IS NOT CONSIDERED A SEPARATE PAY ITEM, AND SHALL BE ABSORBED IN OTHER ITEMS BID.

27. EXISTING SPECIFIC SERVICE (BUSINESS LOGO) SIGNS ARE TO REMAIN IN PLACE UNLESS NOTED IN THE PLANS OR DIRECTED OTHERWISE BY THE PROJECT ENGINEER. LOGO SIGNS THAT REQUIRE RELOCATION OR REMOVAL WILL BE DONE SO BY MISSISSIPPI LOGOS, INC. (601-853-7100).

28. MISSISSIPPI LOGOS, INC. SHALL BE NOTIFIED (601-853-7100) IF THERE ARE ANY CHANGES MADE TO ANY INTERCHANGE RAMP DESIGNATION OR CONFIGURATION.

29. CONTRAFLOW SIGNS ARE TO BE MANUFACTURED WITH A PIANO HINGE IN THE MIDDLE OF THE SIGN SO THAT IT CAN BE FOLDED AND OUT OF VIEW WHEN NOT IN USE.

30. BLACK VINYL SHEETING SHALL BE APPLIED TO THE BACK OF THE HINGED SIGNS. SHEETING SHALL BE AS SPECIFIED IN ITEM 21.

31. RAMP GATE LOCATIONS TO BE STAKED BY CONTRACTOR FOR APPROVAL OF LOCATION AND ARM LENGTH BY PROJECT ENGINEER PRIOR TO ORDERING.

32. GALVANIZED BARS AND MOUNTING HARDWARE TO BE ABSORBED IN OTHER ITEMS FOR SIGNS TO BE INSTALLED.

TRAFFIC CONTROL - TEMPORARY

33. THE LOCATION AND SPACING OF SIGNS, SHOWN ON THE TRAFFIC CONTROL PLANS, ARE APPROXIMATE AND MAY BE ADJUSTED AS NECESSARY TO FIT FIELD CONDITIONS.

34. ALL TRAFIC CONTROL DEVICES ON THIS PROJECT SHALL COMPLY WITH PART VI OF THE MUTCD (LATEST EDITION).

35. ALL PLASTIC DRUMS SHALL HAVE A BALLASTING COLLAR MADE FROM RECYCLED TRUCK TIRES OR OTHER SUITABLE MATERIAL.

36. FLOURESCENT ORANGE SHEETING SHALL BE USED ON ALL CONSTRUCTION AND TRAFFIC CONTROL SIGNS EXCEPT FOR THOSE DESIGNATED ON THE PLANS TO BE BLACK LEGEND AND BORDER ON WHITE BACKGROUND.

37. THE CONTRACTOR SHALL COVER OR REMOVE ANY TEMPORARY TRAFFIC CONTROL SIGNS SHOWN IN THE TRAFFIC CONTROL PLAN THAT DO NOT APPLY TO THE CURRENT PHASE.

38. THE RETROREFLECTIVE SIGN SHEETING ON RIGID, TEMPORARY TRAFFIC CONTROL (ORANGE) SIGNS SHALL BE MINIMUM TYPE IX.)

39. TEMPORARY STRIPING SHALL CONFORM TO FINISHED STRIPE SPECIFICAITONS FOR ALIGNMENT, NEATNESS, AND STRAIGHTNESS.

UTILITIES

40. UTILITIES SHOWN ON THE DRAWINGS ARE SHOWN IN THEIR ORIGINAL LOCATION BASED UPON THE BEST INFORMATION AVAILABLE TO THE ENGINEER. UTILITIES THAT WERE FOUND TO BE IN CONFLICT WITH CONSTRUCTION HAVE BEEN RELOCATED. PERMITS ARE ON FILE WITH THE DEPARTMENT SHOWING THE APPROXIMATE LOCATION OF UTILITIES RELOCATED WITHIN THE RIGHT-OF-WAY. THE ENGINEER CAN NOT AND DOES NOT WARRANT THAT THIS INFORMATION IS COMPLETE OR ACCURATE. THE CONTRACTOR MUST COORDINATE DIRECTLY WITH THE INVOLVED UTILITY OWNERS TO HAVE UNDERGROUND UTILITY LINES FIELD LOCATED IN ADVANCE OF CONSTRUCTION.

- 41. LIST OF PUBLIC UTILITIES
A. AT&T - TERRY ALLEN - 512 BROOKMAN DRIVE, BROOKHAVEN, MS 39601 - (601) 669-8478
B. CABLE ONE/SPARKLIGHT - ROBERT HOPKINS - 230 5TH AVENUE, MCCOMB, MS 39648 - (601) 757-1324
C. C-SPIRE - WESLEY THOMPSON - 1018 HIGHLAND COLONY PARKWAY, JACKSON, MS 39157 - (601) 674-2600
D. ENTERGY - DAVID GOSS - 520 HIGHWAY 51 SOUTH, BROOKHAVEN, MS 39601 - (601) 834-4728
E. FRANKLIN TELEPHONE - RICKY SMITH - P.O. BOX 446, BUDE, MS 39630 - (601) 384-3355

PLAN SHEET

11/7/2024 3:31:56 PM GN.dgn

GENERAL NOTES CONTINUED

MISCELLANEOUS

41. THE CONTRACTOR IS RESPONSIBLE FOR FIELD-VERIFICATION OF EXISTING GRADES AND MAKING ADJUSTMENTS AS NECESSARY WITH THE APPROVAL OF THE PROJECT ENGINEER.

42. THE CONTRACTOR SHALL COORDINATE AND CONDUCT WORK AT LOCAL ROADS AND DRIVEWAYS IN A MANNER SUCH THAT ACCESS IS NOT INTERRUPTED UNNECESSARILY. ACCESS SHALL BE PRESERVED IN THE BEST MANNER POSSIBLE. COORDINATION AND COMMUNICATION WITH LANDOWNERS MAY BE NECESSARY TO PREVENT INTERRUPTION OF DRIVEWAY ACCESS.



DESIGNED BY: MCCARTHY
DETAILED BY:
CHECKED BY:
DATE:

FMS CON: 109436/301000, 109436/302000,
109436/303000, 109436/304000,
109436/305000, 109436/306000
PROJECT NO.: NHPP-0055-01(128)
COUNTY: LINCOLN, PIKE,
FORREST, JONES,
LAMAR, PEARL RIVER

GENERAL NOTES

SHEET ID
GN-2

SHEET NO.
6

PLAN SHEET

11/4/2024 4:57:11 PM GN.dgn