

**GENERAL INDEX**

INCLUDED THIS PROJECT	BEGIN WITH SHEET
<input checked="" type="checkbox"/> ROADWAY.....	1
<input checked="" type="checkbox"/> PERMANENT SIGNS.....	1001
<input type="checkbox"/> TRAFFIC SIGNALS.....	2001
<input type="checkbox"/> ITS COMPONENTS.....	3001
<input type="checkbox"/> LIGHTING.....	4001
<input type="checkbox"/> (RESERVED).....	5001
<input checked="" type="checkbox"/> ROADWAY STD. DWGS.....	6001
<input checked="" type="checkbox"/> BOX CULVERT STD. DWGS (LRFD).....	7001
<input type="checkbox"/> BOX CULVERT STD. DWGS (STD. SPEC.).....	7501
<input checked="" type="checkbox"/> BRIDGE.....	8001
<input checked="" type="checkbox"/> CROSS SECTIONS.....	9001

**BRIDGE STRUCTURES REQ'D.**

BRIDGE A - NO. 52.0 SR 19 @ CUSHTUSIA CREEK  
LT. STA. 591+81.92 TO STA. 592+84.08  
1@100'

BRIDGE B - NO. 52.1 SR 19 @ CUSHTUSIA CREEK  
LT. STA. 597+33.92 TO STA. 600+96.08  
3@120'

BRIDGE C - NO. 52.3 SR 19 @ CUSHTUSIA CREEK  
LT. STA. 608+42.92 TO STA. 609+45.08  
1@100'

BRIDGE D - NO. 52.4 SR 19 @ CUSHTUSIA CREEK  
LT. STA. 614+76.92 TO STA. 615+79.08  
1@100'

BRIDGE E - NO. 52.5 SR 19 @ CUSHTUSIA CREEK  
LT. STA. 619+30.92 TO STA. 620+33.08  
1@100'

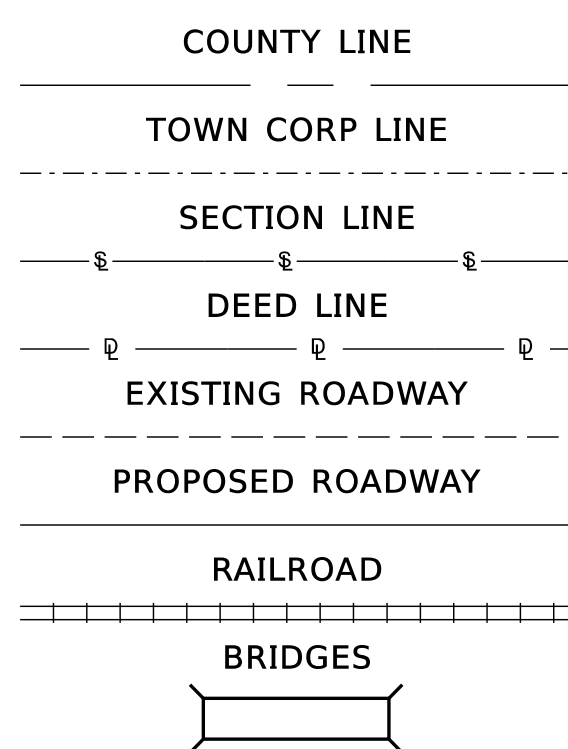
BRIDGE F - NO. 49.2 SR 19 @ COONSHUCK CANAL  
LT. STA. 441+28.75 TO STA. 443+71.25  
RT. STA. 442+08.75 TO STA. 444+51.25  
1@70' - 1@100' - 1@70'

BRIDGE G - NO. 51.3 SR 19 @ BLINKER CREEK  
LT. STA. 554+28.92 TO STA. 556+71.08  
RT. STA. 553+68.92 TO STA. 556+11.08  
1@60' - 1@120' - 1@60'

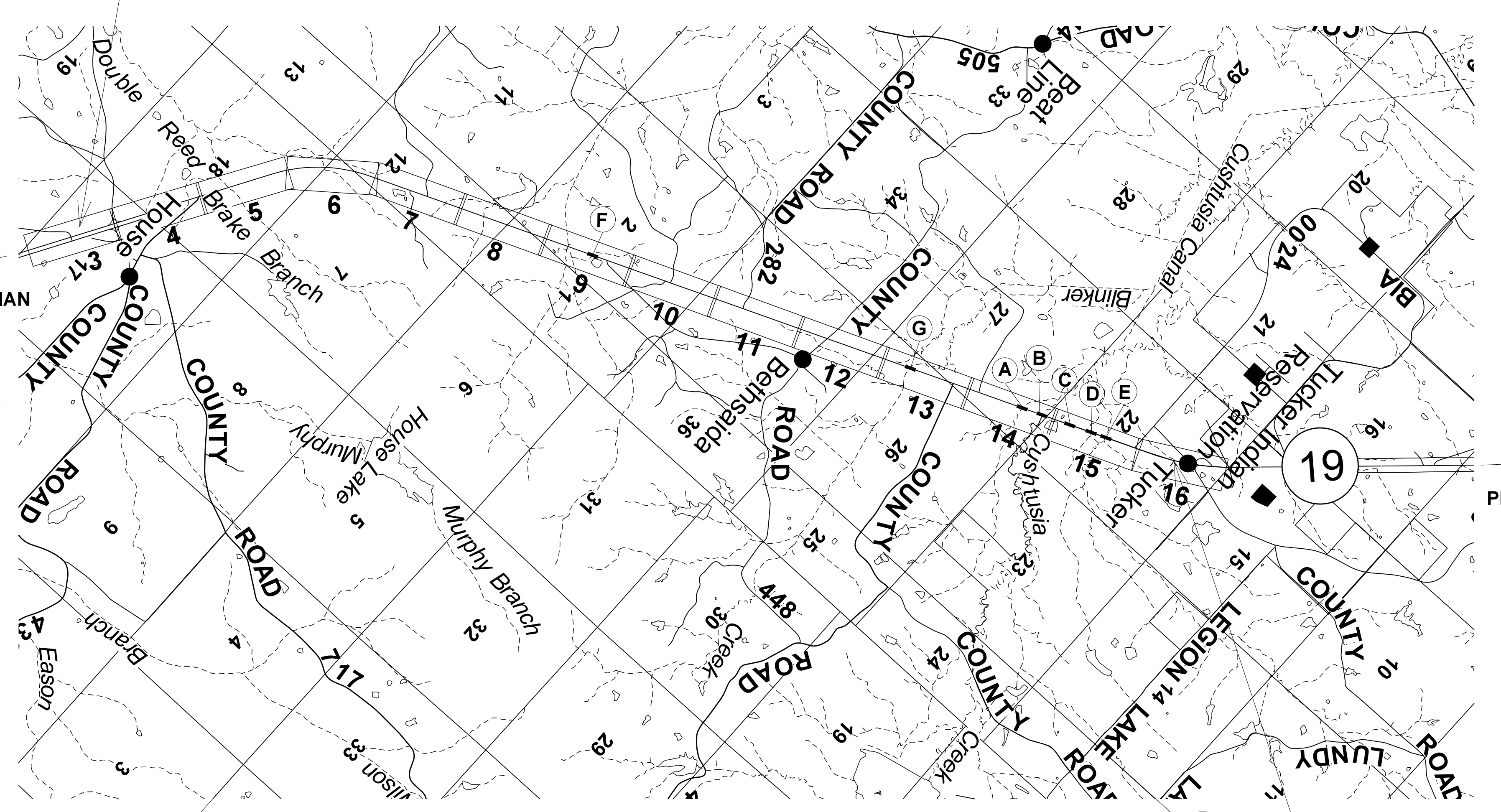
**BOX BRIDGE REQ'D.**

BRIDGE - DBL 12'X6' BOX BRIDGE  
LT. STA. 331+68 TO STA. 331+92  
RT. STA. 332+38 TO STA. 332+62  
1@24"

**CONVENTIONAL SYMBOLS**



**B.O.P.  
STA. 280+00**



**EQUATIONS**

Sta 377+65.686 (BK) = Sta. 377+76.922 (AH) LT.  
Sta 376+85.349 (BK) = Sta. 377+76.922 (AH) RT.

**SCALES**

PLAN 1 IN. = 100 FT.  
PROFILE HOR. 1 IN. = 100 FT.  
VERT. 1 IN. = 10 FT.  
LAYOUT 1 IN. = 5000 FT.

**EXCEPTIONS**

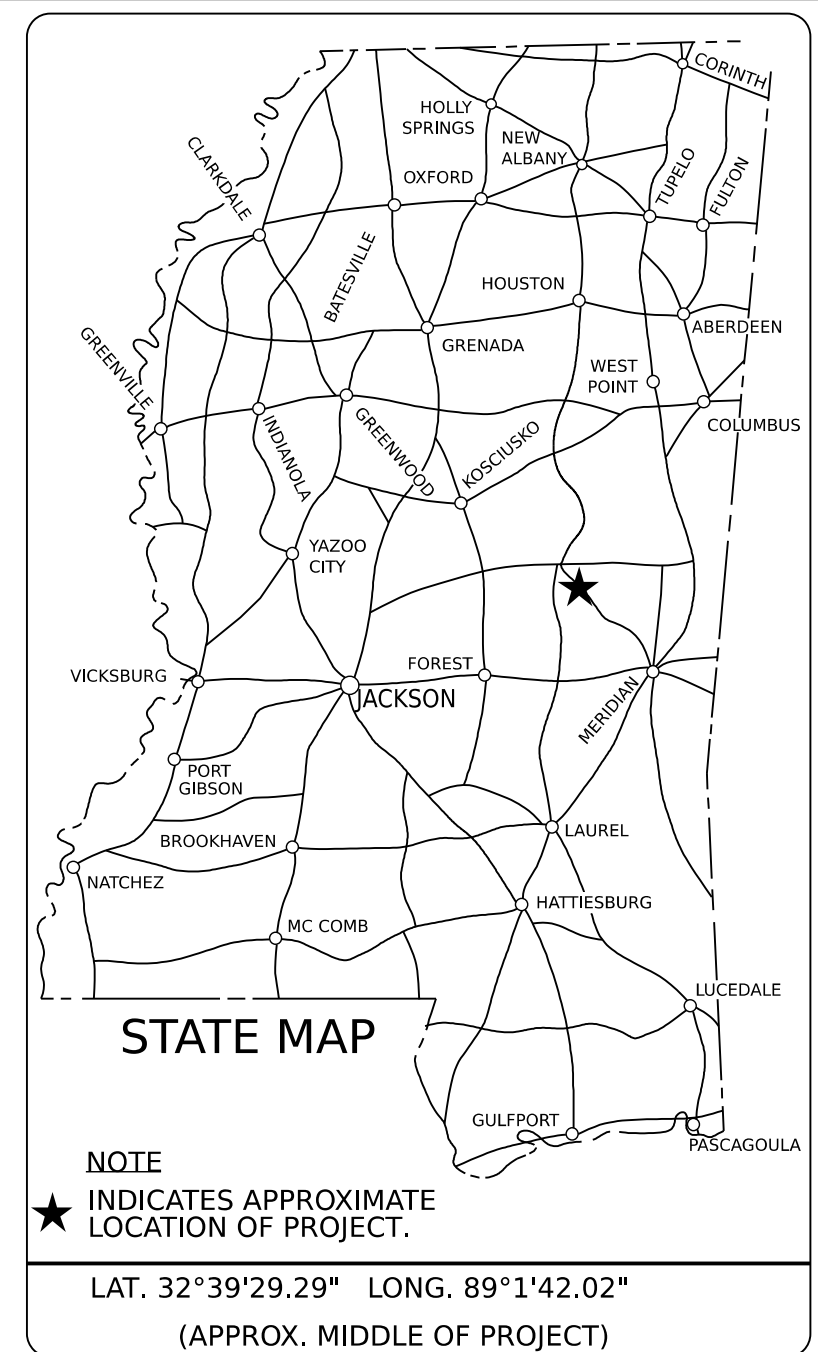
NONE

**E.O.P.  
STA. 641+55**

**STATE OF MISSISSIPPI  
MISSISSIPPI DEPARTMENT OF TRANSPORTATION**

**PLAN AND PROFILE OF  
PROPOSED STATE HIGHWAY  
FEDERAL AID PROJECT NO. STP-0026-01(072)**

**SR 19 FROM SR 492 TO TUCKER DRIVE  
NESHOBA COUNTY**



**DESIGN CONTROL**

65 MPH = V (SPEED DESIGN)  
ADT (2020) = 6600 : ADT (2040) = 8800  
DHV = 970 : D = 50 % T = 10 %

**PERMITS ACQUIRED BY MDOT**

**WETLANDS AND WATERS PERMITS**

	NATIONWIDE #14	NATIONWIDE (OTHER)*	GENERAL*	INDIVIDUAL (404)*	WATERS	WETLANDS
	<input type="checkbox"/>	<input type="checkbox"/>	<input type="checkbox"/>	<input type="checkbox"/>	<input type="checkbox"/>	<input type="checkbox"/>
	<input type="checkbox"/>	<input type="checkbox"/>	<input type="checkbox"/>	<input type="checkbox"/>	<input type="checkbox"/>	<input type="checkbox"/>
	<input type="checkbox"/>	<input type="checkbox"/>	<input type="checkbox"/>	<input type="checkbox"/>	<input type="checkbox"/>	<input type="checkbox"/>

**STORMWATER PERMIT**

REQUIRED, CNOI SUBMITTED BY MDOT (DISTURBED AREA=5 ACRES)  
 REQUIRED, SCNOI TO BE SUBMITTED BY CONTRACTOR (1 TO 4.99 ACRES)  
 NO STORMWATER PERMIT REQUIRED (<1 ACRE)

APPROVED BY: \_\_\_\_\_

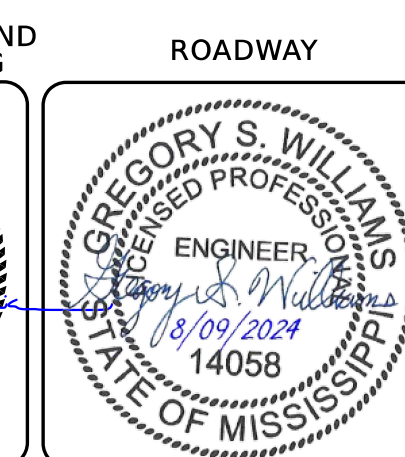
DESIGNED BY: GRESHAM SMITH

**CONSTRUCTION PROJECT DATA**

EXTERNAL PROJECT NUMBER	STP-0026-01(072)
FMS & DETAIL	101649/301000

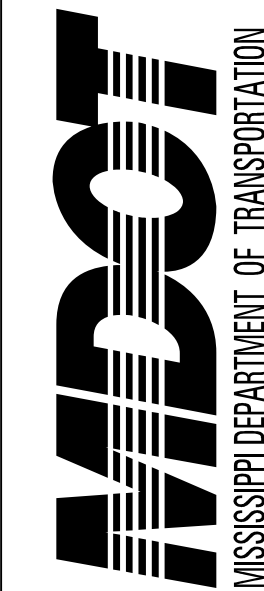
P S & E DATE: 08/09/24

APPROVED:  
  
DEPUTY EXECUTIVE DIRECTOR / CHIEF ENGINEER  
  
EXECUTIVE DIRECTOR



PLAN SHEET

DATE 9:58:04 AM TITLE\_SH.dgn



DESIGNED BY: GRESHAM SMITH  
 DETAILED BY: HU  
 CHECKED BY: MJ  
 DATE: 07/01/2024

FMS CON: 101649/301000  
 PROJECT NO.: STP-0026-01(072)  
 COUNTY: NESHOMA

**DETAILED INDEX**

SHEET ID  
**DI-1**  
 SHEET NO.  
**2**



DESCRIPTION OF SHEET	WKG. NO.	SH. NO.
<b>ROADWAY</b>		
TITLE SHEET		1
<b>DETAILED INDEX &amp; GENERAL NOTES (6)</b>		
DETAILED INDEX	DI-1	2
DETAILED INDEX	DI-2	3
DETAILED INDEX	DI-3	4
DETAILED INDEX	DI-4	5
GENERAL NOTES	GN-1	6
GENERAL NOTES	GN-2	7
<b>TYPICAL SECTION SHEETS (22)</b>		
TYPICAL SECTIONS - SR 19 - MILL & OVERLAY	TS-1	8
TYPICAL SECTIONS - SR 19 - MEDIAN U-TURN	TS-2	9
TYPICAL SECTIONS - J-TURN AND TURN LANES	TS-3	10
TYPICAL SECTIONS - SR 492	TS-4	11
TYPICAL SECTIONS - J-TURN ISLAND	TS-5	12
TYPICAL SECTIONS - J-TURN AND TURN LANES	TS-6	13
TYPICAL SECTIONS - MEDIAN U-TURN	TS-7	14
TYPICAL SECTIONS - SR19 - 4 LANE NEW CONSTRUCTION	TS-8	15
TYPICAL SECTIONS - SR19 - 4 LANE NEW CONSTRUCTION	TS-9	16
TYPICAL SECTIONS - SR19 - 4 LANE NEW CONSTRUCTION	TS-10	17
TYPICAL SECTIONS - SR19 - WIDEN & OVERLAY	TS-11	18
TYPICAL SECTIONS - MEDIAN U-TURN	TS-12	19
TYPICAL SECTIONS - J-TURN AND TURN LANES	TS-13	20
TYPICAL SECTIONS - J-TURN	TS-14	21
TYPICAL SECTIONS - J-TURN AND TURN LANES	TS-15	22
TYPICAL SECTIONS - MEDIAN U-TURN	TS-16	23
TYPICAL SECTIONS - BENCHING DETAILS	TS-17	24
TYPICAL SECTIONS - CROSSOVERS	TS-18	25
TYPICAL SECTIONS - MISCELLANEOUS DETAILS	TS-19	26
TYPICAL SECTIONS - LOCAL ROADS	TS-20	27
TYPICAL SECTIONS - CHANNELIZED INTERSECTION	TS-21	28
TYPICAL SECTIONS - TEMPORARY CONNECTION	TS-22	29
<b>SUMMARY OF QUANTITIES &amp; ESTIMATED QUANTITIES (26)</b>		
SUMMARY OF QUANTITIES	SQ-1	30
SUMMARY OF QUANTITIES	SQ-2	31
SUMMARY OF QUANTITIES	SQ-3	32
SUMMARY OF QUANTITIES	SQ-4	33
SUMMARY OF QUANTITIES	SQ-5	34
ESTIMATED QUANTITIES - REMOVAL	EQ-1	35
ESTIMATED QUANTITIES - EARTHWORK	EQ-2	36
ESTIMATED QUANTITIES - EROSION CONTROL	EQ-3	37
ESTIMATED QUANTITIES - DRAINAGE STRUCTURES	EQ-4	38
ESTIMATED QUANTITIES - DRAINAGE STRUCTURES	EQ-5	39
ESTIMATED QUANTITIES - BOX CULVERTS	EQ-6	40
ESTIMATED QUANTITIES - JUNCTION BOXES	EQ-7	41
ESTIMATED QUANTITIES - INCIDENTAL ITEMS	EQ-8	42
ESTIMATED QUANTITIES - DRIVEWAYS & SIDE DRAINS	EQ-9	43
ESTIMATED QUANTITIES - GUARDRAIL, BRIDGE END PAVEMENT, AND DELINEATORS	EQ-10	44
ESTIMATED QUANTITIES - PERMANENT PAVEMENT MARKINGS	EQ-11	45
ESTIMATED QUANTITIES - STANDARD ROADSIDE SIGNS ASSEMBLIES REQUIRED	EQ-12	46
ESTIMATED QUANTITIES - STANDARD ROADSIDE SIGNS ASSEMBLIES REQUIRED	EQ-13	47
ESTIMATED QUANTITIES - STANDARD ROADSIDE SIGNS ASSEMBLIES REQUIRED	EQ-14	48
ESTIMATED QUANTITIES - STANDARD ROADSIDE SIGNS ASSEMBLIES REQUIRED	EQ-15	49
ESTIMATED QUANTITIES - STANDARD ROADSIDE SIGNS ASSEMBLIES REQUIRED	EQ-16	50
ESTIMATED QUANTITIES - STANDARD ROADSIDE SIGNS ASSEMBLIES REQUIRED	EQ-17	51
ESTIMATED QUANTITIES - STANDARD ROADSIDE SIGNS	EQ-18	52
ESTIMATED QUANTITIES - STANDARD ROADSIDE SIGNS	EQ-19	53
ESTIMATED QUANTITIES - DIRECTIONAL SIGN ASSEMBLIES REQUIRED	EQ-20	54
ESTIMATED QUANTITIES - TRAFFIC CONTROL SIGNS	EQ-TC	55
<b>PLAN &amp; PROFILE SHEETS (40)</b>		
SR 19 SB - B.O.P. TO STA. 293+50	3LT	56
SR 19 NB - B.O.P. TO STA. 293+50	3RT	57
SR 19 SB - STA. 293+50 TO STA. 321+50	4LT	58
SR 19 NB - STA. 293+50 TO STA. 321+50	4RT	59
COUNTY ROAD 298 - STA. 40+00 TO STA. 44+00	4A	60

DESCRIPTION OF SHEET	WKG. NO.	SH. NO.
<b>PLAN &amp; PROFILE SHEETS (CONTINUED)</b>		
SR 19 - TEMPORARY CONNECTION - STA. 1300+00 TO STA. 1313+00	4B	61
SR 19 SB - STA. 321+50 TO STA. 349+50	5LT	62
SR 19 NB - STA. 321+50 TO STA. 349+50	5RT	63
SR 19 SB - STA. 349+50 TO STA. 377+50	6LT	64
SR 19 NB - STA. 349+50 TO STA. 378+50	6RT	65
SR 19 SB - STA. 377+50 TO STA. 405+50	7LT	66
SR 19 NB - STA. 377+50 TO STA. 405+50	7RT	67
COUNTY ROAD 1505 & COUNTY ROAD 270 - STA. 26+00 TO STA. 37+25	7A	68
SR 19 SB - STA. 405+50 TO STA. 433+50	8LT	69
SR 19 NB - STA. 405+50 TO STA. 433+50	8RT	70
SR 19 SB - STA. 433+50 TO STA. 461+50	9LT	71
SR 19 NB - STA. 433+50 TO STA. 461+50	9RT	72
COUNTY ROAD 517 - STA. 37+00 TO STA. 43+00	9A	73
SR 19 SB - STA. 461+50 TO STA. 489+50	10LT	74
SR 19 NB - STA. 461+50 TO STA. 489+50	10RT	75
COUNTY ROAD 515 - STA. 30+75 TO STA. 32+75	10A	76
SR 19 SB - STA. 489+50 TO STA. 517+50	11LT	77
SR 19 NB - STA. 489+50 TO STA. 517+50	11RT	78
COUNTY ROAD 282 - STA. 27+25 TO STA. 32+50	11A	79
SR 19 SB - 517+50 TO STA. 545+50	12LT	80
SR 19 NB - STA. 517+50 TO STA. 545+50	12RT	81
COUNTY ROAD 448 - STA. 29+00 TO STA. 37+00	12A	82
SR 19 SB - 545+50 TO STA. 573+50	13LT	83
SR 19 NB - 545+50 TO STA. 573+50	13RT	84
COUNTY ROAD 450 - STA. 33+00 TO STA. 37+00	13A	85
SR 19 SB - STA. 573+50 TO STA. 601+50	14LT	86
SR 19 NB - STA. 573+50 TO STA. 601+50	14RT	87
COUNTY ROAD 525 - STA. 30+00 TO STA. 32+50	14A	88
SR 19 - TEMPORARY CONNECTION - STA. 1575+00 TO STA. 1589+00	14B	89
SR 19 SB - STA. 601+50 TO STA. 629+50	15LT	90
SR 19 NB - STA. 601+50 TO STA. 629+50	15RT	91
COUNTY ROAD 24 - STA. 30+00 TO STA. 32+75	15A	92
SR 19 - TEMPORARY CONNECTION - STA. 1620+87 TO STA. 1629+00	15B	93
SR 19 SB - STA. 629+50 TO E.O.P.	16LT	94
SR 19 NB - STA. 629+50 TO E.O.P.	16RT	95
<b>EROSION CONTROL SHEETS (45)</b>		
EROSION CONTROL - SR 19 SB - B.O.P. TO STA. 293+50	ECP-3LT	96
EROSION CONTROL - SR 19 NB - B.O.P. TO STA. 293+50	ECP-3RT	97
EROSION CONTROL - SR 19 SB - STA. 293+50 TO STA. 321+50	ECP-4LT	98
EROSION CONTROL - SR 19 NB - STA. 293+50 TO STA. 321+50	ECP-4RT	99
EROSION CONTROL - COUNTY ROAD 298 - STA. 40+00 TO STA. 44+00	ECP-4A	100
EROSION CONTROL - SR 19 TEMPORARY CONNECTION - STA. 1300+00 TO STA. 1313+00	ECP-4B	101
EROSION CONTROL - SR 19 SB - STA. 321+50 TO STA. 349+50	ECP-5LT	102
EROSION CONTROL - SR 19 NB - STA. 321+50 TO STA. 349+50	ECP-5RT	103
EROSION CONTROL - SR 19 SB - STA. 349+50 TO STA. 377+50	ECP-6LT	104
EROSION CONTROL - SR 19 NB - STA. 349+50 TO STA. 378+50	ECP-6RT	105
EROSION CONTROL - SR 19 SB - STA. 377+50 TO STA. 405+50	ECP-7LT	106
EROSION CONTROL - SR 19 NB - STA. 377+50 TO STA. 405+50	ECP-7RT	107
EROSION CONTROL - COUNTY ROAD 1505 & COUNTY ROAD 270 - STA. 26+00 TO STA. 37+25	ECP-7A	108
EROSION CONTROL - SR 19 SB - STA. 405+50 TO STA. 433+50	ECP-8LT	109
EROSION CONTROL - SR 19 NB - STA. 405+50 TO STA. 433+50	ECP-8RT	110
EROSION CONTROL - SR 19 SB - STA. 433+50 TO STA. 461+50	ECP-9LT	111
EROSION CONTROL - SR 19 NB - STA. 433+50 TO STA. 461+50	ECP-9RT	112
EROSION CONTROL - COUNTY ROAD 517 - STA. 37+00 TO STA. 43+00	ECP-9A	113
RIPARIAN BUFFER - SR 19 - BRIDGE 49.2	EC-RB-9B	114

PS & E PLANS-DATE 08/09/2024		
FMS CON. # 101649/301000		
REVISIONS		
DATE	SHEET NO.	BY
9/17/24	4, 30, 261, 268	MJ

PLAN SHEET

9/17/2024 1:30:34 AM Di.dgn



DESIGNED BY: GRESHAM SMITH  
 DETAILED BY: HU  
 CHECKED BY: MJ  
 DATE: 07/01/2024

FMS CON: 101649/301000  
 PROJECT NO.: STP-0026-01(072)  
 COUNTY: NESHOMA

**DETAILED INDEX**

SHEET ID  
**DI-2**  
 SHEET NO.  
**3**



PAVEMENT MARKING AND PERMANENT SIGNING

WKG. NO. SH. NO.

DESCRIPTION OF SHEET

DESCRIPTION OF SHEET	WKG. NO.	SH. NO.
<b>EROSION CONTROL SHEETS (CONTINUED)</b>		
EROSION CONTROL - SR 19 SB - STA. 461+50 TO STA. 489+50	ECP-10LT	115
EROSION CONTROL - SR 19 NB - STA. 461+50 TO STA. 489+50	ECP-10RT	116
EROSION CONTROL - COUNTY ROAD 515 - STA. 30+75 TO STA. 32+75	ECP-10A	117
EROSION CONTROL - SR 19 SB - STA. 489+50 TO STA. 517+50	ECP-11LT	118
EROSION CONTROL - SR 19 NB - STA. 489+50 TO STA. 517+50	ECP-11RT	119
EROSION CONTROL - COUNTY ROAD 282 - STA. 27+25 TO STA. 32+50	ECP-11A	120
EROSION CONTROL - SR 19 SB - 517+50 TO STA. 545+50	ECP-12LT	121
EROSION CONTROL - SR 19 NB - STA. 517+50 TO STA. 545+50	ECP-12RT	122
EROSION CONTROL - COUNTY ROAD 448 - STA. 29+00 TO STA. 37+00	ECP-12A	123
EROSION CONTROL - SR 19 SB - 545+50 TO STA. 573+50	ECP-13LT	124
EROSION CONTROL - SR 19 NB - 545+50 TO STA. 573+50	ECP-13RT	125
EROSION CONTROL - COUNTY ROAD 450 - STA. 33+00 TO STA. 37+00	ECP-13A	126
RIPARIAN BUFFER - SR 19 - BRIDGE 51.3	EC-RB-13B	127
EROSION CONTROL - SR 19 SB - STA. 573+50 TO STA. 601+50	ECP-14LT	128
EROSION CONTROL - SR 19 NB - STA. 573+50 TO STA. 601+50	ECP-14RT	129
EROSION CONTROL - COUNTY ROAD 525 - STA. 30+00 TO STA. 32+50	ECP-14A	130
EROSION CONTROL - SR 19 TEMPORARY CONNECTION - STA. 1575+00 TO STA. 1589+00	ECP-14B	131
RIPARIAN BUFFER - SR 19 - BRIDGE 52.0 & BRIDGE 52.1	EC-RB-14C	132
EROSION CONTROL - SR 19 SB - STA. 601+50 TO STA. 629+50	ECP-15LT	133
EROSION CONTROL - SR 19 NB - STA. 601+50 TO STA. 629+50	ECP-15RT	134
EROSION CONTROL - COUNTY ROAD 24 - STA. 30+00 TO STA. 32+75	ECP-15A	135
EROSION CONTROL - SR 19 TEMPORARY CONNECTION - STA. 1620+87 TO STA. 1629+00	ECP-15B	136
RIPARIAN BUFFER - SR 19 - BRIDGE 52.3 & BRIDGE 52.4	EC-RB-15C	137
RIPARIAN BUFFER - SR 19 - BRIDGE 52.3 & BRIDGE 52.4	EC-RB-15D	138
EROSION CONTROL - SR 19 SB - STA. 629+50 TO E.O.P.	ECP-16LT	139
EROSION CONTROL - SR 19 NB - STA. 629+50 TO E.O.P.	ECP-16RT	140
<b>CONSTRUCTION SIGNING (4)</b>		
DETAIL OF CONSTRUCTION SIGNING	DCS-1	141
DETAIL OF CONSTRUCTION SIGNING	DCS-2	142
DETAIL OF CONSTRUCTION SIGNING	DCS-3	143
DETAIL OF CONSTRUCTION SIGNING	DCS-4	144
<b>TRAFFIC CONTROL PLAN (32)</b>		
TRAFFIC CONTROL PLAN - NARRATIVE	TC-GN1	145
TRAFFIC CONTROL PLAN - PHASE 1 - SB LANES STA. 575+00 TO STA. 597+75	TC-1	146
TRAFFIC CONTROL PLAN - PHASE 1 - SB LANES STA. 597+75 TO STA. 631+25	TC-2	147
TRAFFIC CONTROL PLAN - PHASE 1 - SB LANES STA. 631+25 TO STA. 641+55	TC-3	148
TRAFFIC CONTROL PLAN - PHASE 2 - NB LANES STA. 301+00 TO STA. 325+00	TC-4	149
TRAFFIC CONTROL PLAN - PHASE 2 - NB LANES STA. 325+00 TO STA. 359+00	TC-5	150
TRAFFIC CONTROL PLAN - PHASE 2 - NB LANES STA. 359+00 TO STA. 393+00	TC-6	151
TRAFFIC CONTROL PLAN - PHASE 2 - NB LANES STA. 393+00 TO STA. 426+50	TC-7	152
TRAFFIC CONTROL PLAN - PHASE 2 - NB LANES STA. 426+50 TO STA. 460+00	TC-8	153
TRAFFIC CONTROL PLAN - PHASE 2 - NB LANES STA. 460+00 TO STA. 493+50	TC-9	154
TRAFFIC CONTROL PLAN - PHASE 2 - NB LANES STA. 493+50 TO STA. 527+00	TC-10	155
TRAFFIC CONTROL PLAN - PHASE 2 - NB LANES STA. 527+00 TO STA. 560+50	TC-11	156
TRAFFIC CONTROL PLAN - PHASE 2 - NB LANES STA. 561+50 TO STA. 594+00	TC-12	157
TRAFFIC CONTROL PLAN - PHASE 2 - NB LANES STA. 594+00 TO STA. 627+50	TC-13	158
TRAFFIC CONTROL PLAN - PHASE 2 - NB LANES STA. 627+50 TO STA. 652+00	TC-14	159
TRAFFIC CONTROL PLAN - PHASE 3 - SB LANES STA. 305+00 TO STA. 325+00	TC-15	160
TRAFFIC CONTROL PLAN - PHASE 3 - SB LANES STA. 325+00 TO STA. 359+00	TC-16	161
TRAFFIC CONTROL PLAN - PHASE 3 - SB LANES STA. 359+00 TO STA. 393+00	TC-17	162
TRAFFIC CONTROL PLAN - PHASE 3 - SB LANES STA. 393+00 TO STA. 426+50	TC-18	163
TRAFFIC CONTROL PLAN - PHASE 3 - SB LANES STA. 426+50 TO STA. 460+00	TC-19	164
TRAFFIC CONTROL PLAN - PHASE 3 - SB LANES STA. 460+00 TO STA. 493+50	TC-20	165
TRAFFIC CONTROL PLAN - PHASE 3 - SB LANES STA. 493+50 TO STA. 527+00	TC-21	166
TRAFFIC CONTROL PLAN - PHASE 3 - SB LANES STA. 527+00 TO STA. 560+50	TC-22	167
TRAFFIC CONTROL PLAN - PHASE 3 - SB LANES STA. 561+50 TO STA. 594+00	TC-23	168
TRAFFIC CONTROL PLAN - PHASE 3 - SB LANES STA. 594+00 TO STA. 627+50	TC-24	169
TRAFFIC CONTROL PLAN - PHASE 3 - SB LANES STA. 627+50 TO STA. 652+00	TC-25	170
TRAFFIC CONTROL PLAN - PHASE 4 - STA. 280+00 TO STA. 294+00	TC-26	171
TRAFFIC CONTROL PLAN - PHASE 4 - STA. 294+00 TO STA. 325+00	TC-27	172
TRAFFIC CONTROL PLAN - PHASE 4 - STA. 525+00 TO STA. 530+00	TC-28	173
TRAFFIC CONTROL PLAN - PHASE 5 - STA. 280+00 TO STA. 294+00	TC-29	174
TRAFFIC CONTROL PLAN - PHASE 5 - STA. 294+00 TO STA. 325+00	TC-30	175
TRAFFIC CONTROL PLAN - PHASE 6 - STA. 280+00 TO STA. 294+00	TC-31	176
<b>INTERSECTION DETAIL SHEETS (28)</b>		
SR 492 AT SR 19 STA. 284+80 TO STA. 290+40	ID-1	177

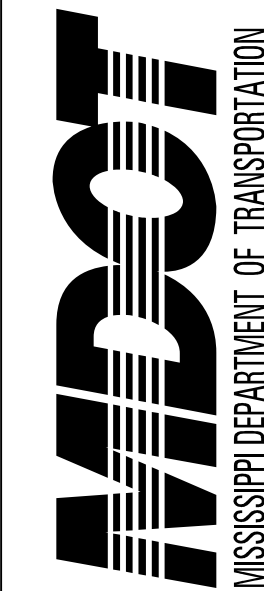
DESCRIPTION OF SHEET

WKG. NO. SH. NO.

DESCRIPTION OF SHEET	WKG. NO.	SH. NO.
<b>INTERSECTION DETAIL SHEETS (CONTINUED)</b>		
SR 492 AT SR 19 STA. 290+40 TO STA. 296+00	ID-2	178
SR 492 AT SR 19 STA. 296+00 TO STA. 301+50	ID-3	179
SR 492 AT SR 19 STA. 301+50 TO STA. 307+00	ID-4	180
SR 492 AT SR 19 ISLAND STA. 291+20 TO STA. 296+80	ID-5	181
COUNTY ROAD 298 AT SR 19 STA. 310+00 TO STA. 315+60	ID-6	182
COUNTY ROAD 298 AT SR 19 STA. 315+60 TO STA. 321+20	ID-7	183
COUNTY ROAD 270 AT SR 19 STA. 387+20 LT TO STA. 392+80 LT	ID-8	184
COUNTY ROAD 270 AT SR 19 STA. 392+80 LT TO STA. 398+40 LT	ID-9	185
COUNTY ROAD 1505 AT SR 19 STA. 387+20 RT TO STA. 392+80 RT	ID-10	186
COUNTY ROAD 1505 AT SR 19 STA. 392+80 RT TO STA. 398+40 RT	ID-11	187
COUNTY ROAD 517 AT SR 19 STA. 454+20 TO STA. 459+80	ID-12	188
COUNTY ROAD 517 AT SR 19 STA. 459+80 TO STA. 465+40	ID-13	189
COUNTY ROAD 515 AT SR 19 STA. 473+40 TO STA. 478+80	ID-14	190
COUNTY ROAD 282 AT SR 19 STA. 495+20 TO STA. 500+60	ID-15	191
COUNTY ROAD 282 AT SR 19 STA. 500+70 TO STA. 506+20	ID-16	192
COUNTY ROAD 448 AT SR 19 STA. 516+00 TO STA. 521+60	ID-17	193
COUNTY ROAD 448 AT SR 19 STA. 521+60 TO STA. 527+20	ID-18	194
COUNTY ROAD 448 AT SR 19 STA. 527+20 TO STA. 532+80	ID-19	195
COUNTY ROAD 448 AT SR 19 STA. 532+80 TO STA. 538+40	ID-20	196
COUNTY ROAD 448 AT SR 19 STA. 29+00 TO STA. 33+80	ID-21	197
COUNTY ROAD 448 AT SR 19 STA. 33+80 TO STA. 37+00	ID-22	198
COUNTY ROAD 450 AT SR 19 STA. 564+20 TO STA. 569+80	ID-23	199
COUNTY ROAD 450 AT SR 19 STA. 569+80 TO STA. 575+40	ID-24	200
COUNTY ROAD 525 AT SR 19 STA. 572+40 TO STA. 578+00	ID-25	201
COUNTY ROAD 525 AT SR 19 STA. 578+00 TO STA. 583+60	ID-26	202
COUNTY ROAD 24 AT SR 19 STA. 624+40 TO STA. 630+00	ID-27	203
COUNTY ROAD 24 AT SR 19 STA. 630+00 TO STA. 635+20	ID-28	204
<b>PAVEMENT MARKING DETAILS (28)</b>		
SR 19 - B.O.P. TO STA. 294+20	PMD-1	205
SR 19 - STA. 293+80 TO STA. 308+20	PMD-2	206
SR 19 - STA. 307+80 TO STA. 322+20	PMD-3	207
SR 19 - STA. 321+80 TO STA. 336+20	PMD-4	208
SR 19 - STA. 336+20 TO STA. 350+20	PMD-5	209
SR 19 - STA. 350+00 TO STA. 364+00	PMD-6	210
SR 19 - STA. 364+00 TO STA. 378+80	PMD-7	211
SR 19 - STA. 378+80 TO STA. 393+00	PMD-8	212
SR 19 - STA. 392+80 TO STA. 407+00	PMD-9	213
SR 19 - AT CR 1505/270 - STA. 26+00 TO STA. 28+60	PMD-9A	214
SR 19 - STA. 406+80 TO STA. 421+20	PMD-10	215
SR 19 - STA. 420+80 TO STA. 430+00	PMD-11	216
SR 19 - STA. 434+80 TO STA. 449+00	PMD-12	217
SR 19 - STA. 448+20 TO STA. 463+00	PMD-13	218
SR 19 - STA. 462+80 TO STA. 477+00	PMD-14	219
SR 19 - STA. 476+80 TO STA. 491+00	PMD-15	220
SR 19 - STA. 490+80 TO STA. 505+00	PMD-16	221
SR 19 - AT CR 282 STA. 27+56 TO STA. 28+80	PMD-16A	222
SR 19 - STA. 504+80 TO STA. 519+00	PMD-17	223
SR 19 - STA. 518+80 TO STA. 533+00	PMD-18	224
SR 19 - STA. 533+80 TO STA. 547+00	PMD-19	225
SR 19 - STA. 546+80 TO STA. 561+00	PMD-20	226
SR 19 - STA. 560+80 TO STA. 575+00	PMD-21	227
SR 19 - STA. 574+80 TO STA. 589+00	PMD-22	228
SR 19 - STA. 588+80 TO STA. 603+00	PMD-23	229
SR 19 - STA. 602+80 TO STA. 617+00	PMD-24	230
SR 19 - STA. 616+80 TO STA. 631+00	PMD-25	231

PLAN SHEET

8/8/2024 4:07:10 PM Di.dgn



DESIGNED BY: GRESHAM SMITH  
 DETAILED BY: HU  
 CHECKED BY: MJ  
 DATE: 07/01/2024

FMS CON: 101649/301000  
 PROJECT NO.: STP-0026-01(072)  
 COUNTY: NESHOMA

DETAILED INDEX

SHEET ID  
**DI-3**  
 SHEET NO.  
**4**



DESCRIPTION OF SHEET	WKG. NO.	SH. NO.
<b>PAVEMENT MARKING DETAILS (CONTINUED)</b>		
SR 19 - STA. 630+80 TO E.O.P.	PMD-26	232
<b>FORM GRADES (8)</b>		
FORM GRADES - SR 19 MEDIAN U-TURN AT STA. 286+00	FG-1	233
FORM GRADES - MEDIAN CROSSOVER AT SR 19 / SR 492 INTERSECTION	FG-2	234
FORM GRADES - SR 19 MEDIAN U-TURN AT STA. 306+00	FG-3	235
FORM GRADES - SR 19 MEDIAN CROSSOVER AT STA. 314+00	FG-4	236
FORM GRADES - CR 448 AT SR 19	FG-5	237
FORM GRADES - SR 19 MEDIAN U-TURN AT STA. 517+00	FG-6	238
FORM GRADES - SR 19 MEDIAN CROSSOVER AT STA. 527+50	FG-7	239
FORM GRADES - SR 19 MEDIAN U-TURN AT STA. 537+50	FG-8	240
<b>MISCELLANEOUS ROADWAY ITEMS (29)</b>		
<b>VEGETATION SCHEDULE</b>	VS-1	241
CONTROL POINT LAYOUT SHEET - B.O.P. TO STA. 308+50	CPL-1	242
CONTROL POINT LAYOUT SHEET - STA. 308+50 TO STA. 336+50	CPL-2	243
CONTROL POINT LAYOUT SHEET - STA. 336+50 TO STA. 364+50	CPL-3	244
CONTROL POINT LAYOUT SHEET - STA. 364+50 TO STA. 393+50	CPL-4	245
CONTROL POINT LAYOUT SHEET - STA. 393+50 TO STA. 420+50	CPL-5	246
CONTROL POINT LAYOUT SHEET - STA. 420+50 TO STA. 448+50	CPL-6	247
CONTROL POINT LAYOUT SHEET - STA. 448+50 TO STA. 476+50	CPL-7	248
CONTROL POINT LAYOUT SHEET - STA. 476+50 TO STA. 504+50	CPL-8	249
CONTROL POINT LAYOUT SHEET - STA. 504+50 TO STA. 532+50	CPL-9	250
CONTROL POINT LAYOUT SHEET - STA. 532+50 TO STA. 560+50	CPL-10	251
CONTROL POINT LAYOUT SHEET - STA. 560+50 TO STA. 589+50	CPL-11	252
CONTROL POINT LAYOUT SHEET - STA. 589+50 TO STA. 616+50	CPL-12	253
CONTROL POINT LAYOUT SHEET - STA. 616+50 TO STA. 644+50	CPL-13	254
CONTROL POINT LAYOUT SHEET - STA. 644+50 TO E.O.P.	CPL-14	255
ROW COORDINATE SHEET	RMC-1	256
ROW COORDINATE SHEET	RMC-2	257
ROW COORDINATE SHEET	RMC-3	258
ROW COORDINATE SHEET	RMC-4	259
EASEMENT COORDINATE SHEET	ESC-1	260
SPECIAL DESIGN SLOTTED CURB DETAILS	SD-SC1	261
SAND BLANKET TYPICAL SECTION & DETAIL	SBD-1	262
SAND BLANKET TYPICAL SECTION & DETAIL	SBD-2	263
SAND BLANKET TYPICAL SECTION & DETAIL	SBD-3	264
SAND BLANKET TYPICAL SECTION & DETAIL	SBD-4	265
SIGN SUPPORT HARDWARE 2.0" SQUARE POST	TSS-1	266
SIGN SUPPORT HARDWARE 2.5" SQUARE POST	TSS-2	267
BRIDGE END PAVEMENT WITH RAIL, OVERLAY, AND SLEEPER SLAB (NEW CONSTRUCTION)	SDBE-1	268
<b>PERMANENT SIGNING SHEETS (26)</b>		
SR 19 - B.O.P. TO STA. 294+40	PSP-1	1001
SR 19 - STA. 294+40 TO STA. 308+80	PSP-2	1002
SR 19 - STA. 308+80 TO STA. 309+20	PSP-3	1003
SR 19 - STA. 324+20 TO STA. 337+60	PSP-4	1004
SR 19 - STA. 337+80 TO STA. 351+80	PSP-5	1005
SR 19 - STA. 352+60 TO STA. 366+20	PSP-6	1006
SR 19 - STA. 367+00 TO STA. 381+60	PSP-7	1007
SR 19 - STA. 381+80 TO STA. 396+00	PSP-8	1008
SR 19 - STA. 396+20 TO STA. 410+40	PSP-9	1009
SR 19 - STA. 410+60 TO STA. 424+80	PSP-10	1010
SR 19 - STA. 425+00 TO STA. 439+20	PSP-11	1011
SR 19 - STA. 439+40 TO STA. 453+60	PSP-12	1012
SR 19 - STA. 453+80 TO STA. 468+00	PSP-13	1013
SR 19 - STA. 468+20 TO STA. 482+40	PSP-14	1014
SR 19 - STA. 482+60 TO STA. 496+80	PSP-15	1015
SR 19 - STA. 497+00 TO STA. 511+20	PSP-16	1016
SR 19 - STA. 511+40 TO STA. 524+60	PSP-17	1017
SR 19 - STA. 525+80 TO STA. 540+00	PSP-18	1018
SR 19 - STA. 540+00 TO STA. 554+40	PSP-19	1019
SR 19 - STA. 544+60 TO STA. 568+80	PSP-20	1020
SR 19 - STA. 569+00 TO STA. 583+20	PSP-21	1021
SR 19 - STA. 583+40 TO STA. 597+60	PSP-22	1022
SR 19 - STA. 597+80 TO STA. 612+00	PSP-23	1023
SR 19 - STA. 612+20 TO STA. 626+20	PSP-24	1024
SR 19 - STA. 626+60 TO STA. 640+80	PSP-25	1025
DIRECTIONAL SIGN DETAIL	DSD-1	1026

DESCRIPTION OF SHEET	WKG. NO.	SH. NO.
<b>STANDARD DRAWINGS (90)</b>		
33.5" BRIDGE END PAVEMENT RAIL	BER-1	6009
CONCRETE ISLAND PAVEMENT DETAILS	CIP-1	6011
PAVEMENT MARKING DETAILS FOR 2-LANE & 4-LANE DIVIDED ROADWAYS	PM-1	6051
PAVEMENT MARKING LEGEND DETAILS	PM-6	6056
TYPICAL PAVEMENT MARKING DETAIL FOR MEDIAN CROSSOVERS	PM-9	6059
2-WAY RAISED PAVEMENT MARKERS AT INTERSECTING ROADS (4-LANE)	PM-12	6062
RUMBLE STRIPES 4-LANE HIGHWAYS (ASPHALT LANES, 2-FT OR WIDER ASPHALT SHOULDERS)	RS-2	6065
TYPICAL TEMPORARY EROSION / SEDIMENT CONTROL APPLICATIONS	ECD-1	6101
DETAILS OF SEDIMENT BARRIER APPLICATIONS	ECD-2	6102
DETAILS OF SILT FENCE INSTALLATION	ECD-3	6103
DITCH CHECK STRUCTURES, TYPICAL APPLICATIONS AND DETAILS	ECD-4	6104
TEMPORARY EROSION, SEDIMENT, AND WATER POLLUTION CONTROL MEASURES	ECD-5	6105
DETAILS OF EROSION CONTROL WATTLE DITCH CHECK	ECD-6	6106
DETAILS OF EROSION CONTROL SILT DIKE DITCH CHECK	ECD-7	6107
ROCK DITCH CHECK	ECD-8	6108
ROCK FILTER DAM	ECD-9	6109
ROCK DITCH CHECK WITH SUMP EXCAVATION AND ROCK FILTER DAM	ECD-10	6110
TYPICAL APPLICATIONS AND DETAILS FOR INLET CONSTRUCTION	ECD-11	6111
INLET PROTECTION DETAILS FOR SEDIMENT CONTROL STONE ON GRADES AND SAGS	ECD-12	6112
INLET PROTECTION DETAILS OF WATTLES	ECD-13	6113
INLET PROTECTION DETAILS OF MANUFACTURED INLET PROTECTION DEVICE	ECD-14	6114
INLET PROTECTION DETAILS OF SANDBAGS	ECD-15	6115
STABILIZED CONSTRUCTION ENTRANCE	ECD-16	6116
TEMPORARY STREAM DIVERSION	ECD-18	6118
TEMPORARY STREAM DIVERSION (BOX EXTENSIONS)	ECD-19	6119
FLOATING TURBIDITY CURTAIN	ECD-20	6120
DETAILS OF EROSION CONTROL SANDBAG DITCH CHECK	ECD-21	6121
SEDIMENT RETENTION BARRIER	ECD-22	6122
DETAILS OF TYPICAL DITCH TREATMENTS	DT-1	6123
DITCH TREATMENT INSTALLATION DETAIL FOR SOIL REINFORCING MAT	DT-1A	6124
SUPER SILT FENCE	SSF-1	6130
EROSION CONTROL BLANKET	ECB-1	6131
GUARD RAIL : "W" BEAM (WOOD POSTS)	GR-1	6201
GUARD RAIL : THRIE BEAM (WOOD POSTS)	GR-1A	6202
GUARDRAIL: "W" BEAM (STEEL POSTS)	GR-1B	6203
GUARDRAIL: BRIDGE END SECTION-TYPE I (STEEL POSTS) (NEW CONSTRUCTION)	GR-2G	6211
GUARDRAIL: TYPICAL INSTALLATION AT BRIDGE APPROACHES FOR DIVIDED HIGHWAYS	GR-4	6214
GUARDRAIL: RUB RAIL HARDWARE	GR-RR	6218
GUARDRAIL (TEMPORARY): TYPICAL INSTALLATION AT BRIDGE END DURING CONSTRUCTION PHASES	TGR-2	6220
GUARDRAIL: MISCELLANEOUS HARDWARE	GR-HW	6221
ROUTE SHIELDS AND "EXIT ONLY" PANELS	SN-2	6302
STANDARD ROADSIDE SIGNS	SN-3	6303
STANDARD ROADSIDE SIGNS	SN-3A	6304
STANDARD ROADSIDE SIGNS	SN-3B	6305
TYPICAL CROSSOVER DELINEATION	SN-8B	6316
TYPICAL GUARDRAIL DELINEATION	SN-8C	6317
SIGNING DETAILS FOR BRIDGE APPROACHES	SN-9	6318
TRAFFIC CONTROL PLAN WITH FLAGGER (ONE-LANE CLOSURE OF TWO-WAY TRAFFIC)	TCP-1	6351
TRAFFIC CONTROL PLAN FOR POSTED SPEED LIMIT LESS THAN 65 MPH (4-LANE: MEDIAN LANE OR OUTSIDE LANE CLOSURE) (WORK DAY ONLY)	TCP-2	6352
TRAFFIC CONTROL PLAN FOR POSTED SPEED LIMIT LESS THAN 65 MPH (4-LANE: MEDIAN LANE OR OUTSIDE LANE CLOSURE) (EXTENDED PERIOD)	TCP-3	6353
HIGHWAY SIGN AND BARRICADE DETAILS FOR CONSTRUCTION PROJECTS	TCP-8	6358
TRAFFIC CONTROL PLAN MOBILE OPERATIONS MULTILANE ROADS AND TWO-LANE ROADS	TCP-9	6359
TRAFFIC CONTROL PLAN FOR TEMPORARY CONSTRUCTION CROSSOVER (WORK DAY ONLY)	TCP-11	6361
TRAFFIC CONTROL PLAN: UNEVEN PAVEMENT DETAILS	TCP-12	6362

REVISIONS	
DATE	BY
09/17/24	MJ

REMOVED STANDARD DRAWING SHEET. ADDED SPECIAL DESIGN SHEET.

PLAN SHEET

9/17/2024 1:19:04 AM Di.dgn



## GENERAL NOTES

### BRIDGES AND WALLS

- (1) THE BRIDGE DECKS SHALL BE GROOVED AND ALL BRIDGE JOINTS SHALL BE SEALED PRIOR TO OPENING THE BRIDGES TO TRAFFIC.
- (2) STORAGE OF FLAMMABLE MATERIALS WILL NOT BE ALLOWED UNDER ANY BRIDGE STRUCTURES WITHOUT WRITTEN APPROVAL FROM THE PROJECT ENGINEER. SEE NOTICE TO BIDDERS ENTITLED "MATERIAL STORAGE UNDER BRIDGES" FOR MORE INFORMATION.

### DRAINAGE STRUCTURES

- (3) ALL PIPE JOINTS ARE TO BE WRAPPED IN 24-INCH WIDE TYPE V GEOTEXTILE FABRIC. ALL PICKUP HOLES SHALL BE PLUGGED AND COVERED WITH TYPE V GEOTEXTILE FABRIC, THE COST OF WHICH SHALL BE ABSORBED IN OTHER ITEMS BID.
- (4) THE COST OF ANY COLLARS REQUIRED TO CONNECT CONCRETE FLARED END SECTIONS SHALL BE ABSORBED IN THE COST FOR NON-CONCRETE PIPE.
- (5) FULL COLLARS ARE TO BE USED AT ALL BOX CULVERT EXTENSIONS AND AT ALL BOX CULVERT CONSTRUCTION JOINTS. (SEE WK. NO. ICJ-1 FOR DETAILS)
- (6) THE COST OF ANY COLLARS REQUIRED TO CONNECT CONCRETE FLARED END SECTIONS TO NON-CONCRETE PIPE SECTIONS SHALL BE ABSORBED IN THE COST FOR NON-CONCRETE PIPE.
- (7) CURB AND GUTTER VERTICAL DIMENSIONS SHOWN IN THE DETAIL DRAWINGS ARE FOR A CURB IN THE "CATCH" CONFIGURATION AND SHALL BE CONSIDERED TO BE MINIMUM DIMENSIONS. THE DIMENSIONS MAY BE MODIFIED AS NECESSARY FOR "SPILL" CURB AND GUTTER, BUT SHALL NOT BE LESS THAN THE MINIMUM SHOWN.
- (8) THE COST FOR REMOVAL OF ALL HEADWALLS AND WINGWALLS (PIPES, BOX CULVERTS, BOX BRIDGES) SHALL BE ABSORBED IN OTHER ITEMS BID.
- (9) THE CONTRACTOR SHALL BE RESPONSIBLE FOR PROTECTING EXISTING STRUCTURES SUCH AS, BUT NOT LIMITED TO, PIPES, INLETS, APRONS, AND BRIDGES FROM DAMAGE WHICH MIGHT OCCUR DURING CONSTRUCTION. THE CONTRACTOR SHALL REPLACE OR REPAIR, AS DIRECTED BY THE ENGINEER, ANY STRUCTURES DAMAGED DURING THE LIFE OF THE CONTRACT. NO PAYMENT WILL BE MADE FOR REPLACEMENT OR REPAIR OF DAMAGED ITEMS.

### EARTHWORK

- (10) A SOIL PROFILE HAS BEEN PREPARED FOR THIS PROJECT USING SAMPLES TAKEN FROM HOLES AT THE LOCATIONS INDICATED IN THE TEST REPORTS. THIS SOIL PROFILE IS ON FILE IN THE DISTRICT AND CENTRAL CONSTRUCTION OFFICES AND IS AVAILABLE FOR EXAMINATION. THE DEPARTMENT DOES NOT GUARANTEE THAT THE MATERIALS AS SHOWN IN THE REPORTS ARE NECESSARILY TO BE FOUND OUTSIDE THE TEST HOLES.
- (11)   25   % SHRINKAGE FACTOR USED IN THE EARTHWORK CALCULATIONS IS FOR DESIGN ESTIMATING PURPOSES ONLY.
- (12) THE TOP THREE FEET AND VARIABLE OF THE DESIGN SOILS (BOTH NATURAL AND EMBANKMENT) SHALL BE CONSTRUCTED OF SOIL CLASSIFIED AS   B17   OR BETTER, PER MDOT SPECIFICATIONS 703.21, EXCEPT AT UNDERCUT LOCATIONS DESIGNATED ON THE PLANS OR AS DIRECTED BY THE ENGINEER TO RECEIVE CLASS B-15 BORROW EXCAVATION. EXTREME CARE SHALL BE EXERCISED IN UNDERCUT AREAS, AND THE UNDERCUT DEPTH MAY BE ADJUSTED AT CROSS DRAINS AS DIRECTED BY THE ENGINEER. FOR ADDITIONAL DETAILS THE CONTRACTOR IS REFERRED TO THE NOTICE TO BIDDERS ON DESIGN SOIL MATERIAL IN THE CONTRACT PROPOSAL DOCUMENT.
- (13) VOIDS CREATED BY THE REMOVAL OF, BUT NOT LIMITED TO, POSTS, CONCRETE ANCHORS, AND FOOTINGS SHALL BE BACKFILLED AND TAMPED IN ACCORDANCE WITH SECTION 203 OF *THE MISSISSIPPI STANDARD SPECIFICATIONS FOR ROAD AND BRIDGE CONSTRUCTION*. THE COST OF WHICH WILL BE ABSORBED IN OTHER ITEMS BID.
- (14) WORK ON STRUCTURES FOR THIS PROJECT REQUIRES EXCAVATION IN THE IMMEDIATE VICINITY OF TRAFFIC AND ADJACENT PROPERTIES. THEREFORE, THE RISK OF A FAILURE OCCURRING DURING EXCAVATION REQUIRES THAT EXTREME CAUTION BE EXERCISED. THE CONTRACTOR SHALL BE RESPONSIBLE FOR PLACING WHAT BRACING, SHORING, OR GROUND SUPPORT SYSTEM THAT IS DEEMED NECESSARY TO PREVENT A FAILURE AND PROTECT THE PERSONS WORKING NEAR THE EXCAVATION, THE PUBLIC THAT MAY BE ABOVE THE EXCAVATION, OR ANY STRUCTURES ADJACENT TO THE EXCAVATION. ALL COSTS FOR DESIGNING, DRAWING, AND CONSTRUCTING THE FACILITY SHALL BE INCLUDED IN THE PRICE BID FOR CONTRACT ITEMS.
- (15) VEGETATIVE MATERIAL WILL BE REMOVED PRIOR TO PLACEMENT OF GRANULAR MATERIAL. THE COST OF WHICH SHALL BE ABSORBED IN OTHER ITEMS BID.
- (16) THIN LAYERS OF ROCK ENCOUNTERED DURING EXCAVATION WHICH CAN BE REMOVED WITH TRADITIONAL EXCAVATION EQUIPMENT WILL BE PAID FOR AS UNCLASSIFIED EXCAVATION.
- (17) PRIOR TO EARTHWORK OPERATIONS, THE EXISTING TOP 4" TOPSOIL IS TO BE STRIPPED AND STOCKPILED. AFTER THE GRADING OPERATIONS ARE COMPLETED, SAID TOPSOIL SHALL BE PLACED ON ALL AREAS THAT ARE NOT TO BE PAVED OR OTHERWISE PROTECTED, IN ACCORDANCE WITH SECTION 211 OF THE SPECIFICATIONS, OR THE VEGETATION SCHEDULE (SEE WK. SH. VS-1). EXISTING TOPSOIL AND ALL COSTS ASSOCIATED WITH STRIPPING, HAULING, STOCKPILING, AND PLACEMENT OF THE EXISTING TOPSOIL IS TO BE ABSORBED IN OTHER EARTHWORK ITEMS.

## GENERAL NOTES (CONTINUED)

### ENVIRONMENTAL & CLEARING

- (18) THE MISSISSIPPI DEPARTMENT OF TRANSPORTATION HAS MADE A COMMITMENT TO THE FOLLOWING ITEMS IN THE APPROVED ENVIRONMENTAL DOCUMENT. THE CONTRACTOR SHALL USE ALL PRACTICAL STANDARD PROCEDURES AND MEASURES, INCLUDING BEST MANAGEMENT PRACTICES, TO AVOID OR MINIMIZE IMPACTS.
  - (A) SINCE TREE CLEARING IS REQUIRED, IT IS RECOMMENDED THAT ANY TREE REMOVAL ACTIVITIES REQUIRED TAKE PLACE IN THE NON-MATERNITY (SEPTEMBER 1 - MAY 14) SEASON FOR THE NORTHERN LONG-EARED BAT.
- (19) NO TEMPORARY CULVERT STREAM CROSSINGS WILL BE ALLOWED.
- (20) FOR CLEARING LIMITS ADJACENT TO THE STREAMS AT STATION(S) 442+00,555+00,592+00, 599+00, 609+00, 615+00, and 620+00. SEE WORKING SHEET NUMBERS ECP-RB-9B, ECP-RB-13B, ECP-RB-14B, ECP-RB-15B, ECP-RB-15C. THE CLEARING LIMITS SHOWN ON THESE SHEETS ARE ONLY FOR THE RIPARIAN BUFFER CLEARING. CLEARING AT OTHER LOCATIONS SHOULD STILL APPLY.

### EROSION CONTROL - TEMPORARY

- (21) WIRE FENCE BACKING WILL BE REQUIRED FOR ALL SILT FENCE. (SEE WK. NO. ECD-3)
- (22) THE EROSION CONTROL DEVICES REFERENCED IN THESE PLANS ARE A MINIMUM REQUIREMENT. IT IS THE RESPONSIBILITY OF THE CONTRACTOR TO ENSURE THAT SILT DOES NOT LEAVE THE RIGHT OF WAY OR CONTAMINATE WATERS OF THE U. S. DURING CONSTRUCTION. THE CONTRACTOR SHALL SUBMIT AN EROSION CONTROL PLAN PRIOR TO COMMENCEMENT OF WORK AND MAINTAIN THE PLAN DURING CONSTRUCTION. ANY ADDITIONAL SILT BASINS NOT SHOWN IN THE PLANS SHALL BE INCLUDED IN THE CONTRACTOR'S EROSION CONTROL PLAN PRIOR TO SUBMITTING FOR APPROVAL.
- (23) ALL ITEMS OF WORK ASSOCIATED WITH THE INSTALLATION OF A CONSTRUCTION ENTRANCE SHALL BE ABSORBED IN OTHER ITEMS OF WORK.

### PAVEMENT, BASE, AND SHOULDERS

- (24) THE CONTRACTOR SHALL REPAIR ANY DAMAGE TO THE PAVED OR UNPAVED SHOULDER THAT MIGHT OCCUR DURING CONSTRUCTION. ANY REPAIR TO SHOULDER WILL BE IN ACCORDANCE WITH THE APPLICABLE SECTIONS OF *THE MISSISSIPPI STANDARD SPECIFICATIONS FOR ROAD AND BRIDGE CONSTRUCTION*. NO PAYMENT WILL BE MADE FOR REPAIR OF DAMAGED SHOULDER.
- (25) TEMPORARY PAVEMENT JOINTS (PAPER JOINTS) SHALL BE EMPLOYED AT ALL LOCATIONS REQUIRING TRAFFIC TO TRAVERSE AN UNEVEN PAVEMENT JOINT. PAPER JOINTS SHALL BE A MINIMUM OF 9 FEET IN LENGTH AND SHALL BE ADEQUATELY MAINTAINED.
- (26) WHERE MILLING IS REQUIRED, THE CONTRACTOR SHALL PROVIDE OUTLETS IN THE EXISTING SHOULDERS AT SUFFICIENT INTERVALS TO PREVENT POOLING OR STANDING WATER ON THE MILLED SURFACE, THE COST OF WHICH SHALL BE ABSORBED IN OTHER ITEMS BID.

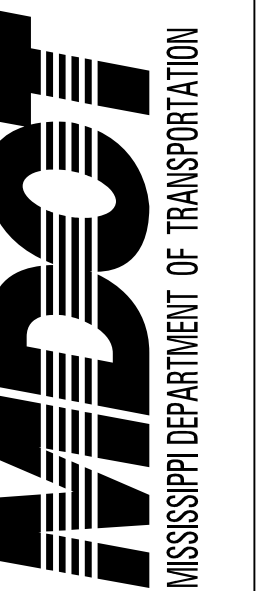
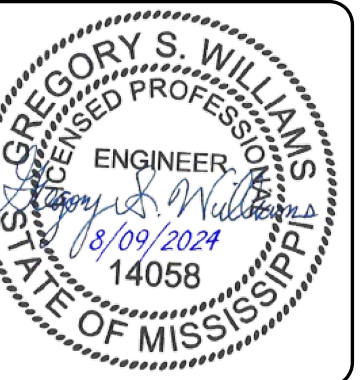
### PLANS

- (27) IF COLORS ARE USED ON PLAN/PROFILE SHEETS, THEY ARE INTENDED TO VISUALLY EASE THE LOCATION OF ELEMENTS FOR USERS OF THESE DRAWINGS. ALTHOUGH THE INTENT IS TO CATEGORIZE EVERYTHING AS EITHER EXISTING OR PROPOSED, IT IS THE END USER'S RESPONSIBILITY TO ENSURE ALL ELEMENTS ARE INTERPRETED CORRECTLY, REGARDLESS OF COLOR.
- (28) ALL ADDENDA TO THESE PLANS WILL BE POSTED TO [WWW.MDOT.MS.GOV](http://WWW.MDOT.MS.GOV) UNDER THE PROPOSAL ADDENDA COLUMN. BIDDERS ARE ADVISED THAT HARD COPIES OF ANY ADDENDA FOR THIS PROJECT WILL NOT BE MAILED. IT IS THE BIDDER'S RESPONSIBILITY TO CHECK AND SEE IF ANY ADDENDA HAVE BEEN POSTED FOR THIS PROJECT.
- (29) SEE BRIDGE PLANS FOR DETAILED INDEX SHEET(S), ESTIMATED AND SUMMARY OF QUANTITY SHEETS, AND EROSION CONTROL SHEETS.

### ROADSIDE BARRIERS

- (30) ALL DIMENSIONS AND SPACINGS FOR BRIDGE RAIL CONNECTORS SHALL BE VERIFIED IN THE FIELD BY THE CONTRACTOR PRIOR TO FABRICATION.

**NOTICE:**  
THE NOTES CONTAINED HEREON ARE SPECIFIC TO THE SUBJECT PROJECT AND SHOULD BE REVIEWED IN DETAIL BY THE CONTRACTOR PER SECTION 102.05 OF THE STANDARD SPECIFICATIONS. THE BIDDER IS REQUIRED TO EXAMINE CAREFULLY THE SITE OF THE PROPOSED WORK, THE PROPOSAL, PLANS, STANDARD SPECIFICATIONS, SPECIAL PROVISIONS, NOTICES TO BIDDERS, AND CONTRACT FORMS BEFORE SUBMITTING A PROPOSAL.



DESIGNED BY: GRESHAM SMITH

DETAILED BY: JD

CHECKED BY: MJ

DATE: 07/17/2024

FMS CON: 101649/301000

PROJECT NO.: STP-0026-01(072)

COUNTY: NESHOMA

GENERAL NOTES

SHEET ID  
**GN-1**

SHEET NO.  
**6**

PLAN SHEET

8/8/2024 4:07:23 PM GN.dgn

GENERAL NOTES (CONTINUED)

TRAFFIC CONTROL - PERMANENT

- (31) INSTALLATION DATES SHALL BE CLEARLY WRITTEN IN BOLD BLACK MARKINGS ON THE BACK BOTTOM HALF OF ALL SIGNS WITH A PERMANENT MARKING STICK THAT IS WATERPROOF, FADE RESISTANT AND MARKS ON WET OR DRY SURFACES.
- (32) ALL POST, PIPE, AND I-BEAM LENGTHS IN THESE PLANS ARE ESTIMATES. POST LENGTHS FOR ALL SIGNS SHALL BE VERIFIED IN THE FIELD BY THE CONTRACTOR PRIOR TO FABRICATION.
- (33) ALL EXISTING SIGNS WHICH ARE TO BE REMOVED AS A PART OF THIS PROJECT THAT ARE NOT IN CONFLICT WITH CONSTRUCTION SHALL REMAIN IN PLACE UNTIL NEW SIGNS ARE INSTALLED UNLESS NOTED OR DIRECTED OTHERWISE BY THE PROJECT ENGINEER. ROADWAY SIGNS THAT ARE IN CONFLICT WITH CONSTRUCTION SHALL BE REMOVED AND RELOCATED BY THE CONTRACTOR AS DIRECTED BY THE ENGINEER, THE COST OF WHICH SHALL BE ABSORBED IN OTHER ITEMS BID.
- (34) DIRECT-APPLIED LEGEND, BORDER, AND/OR SHIELDS ARE TO BE USED ON ALL GUIDE SIGNS. DIGITALLY PRODUCED SIGN COPY, SHIELDS, LEGEND, SYMBOLS, OR IMAGES WILL NOT BE ALLOWED WITHOUT WRITTEN APPROVAL FROM MDOT'S PROJECT ENGINEER.
- (35) ALL PERMANENT SIGNS SHALL CONFORM TO THE LATEST EDITION OF THE MANUAL ON UNIFORM TRAFFIC CONTROL DEVICES.
- (36) ALL SIGN LOCATIONS SHALL BE APPROVED BY THE PROJECT ENGINEER PRIOR TO INSTALLATION.
- (37) THE RETROREFLECTIVE SIGN SHEETING ON PERMANENT GROUND-MOUNTED SIGNS SHALL BE AS FOLLOWS: BROWN BACKGROUND SHEETING ON GUIDE SIGNS SHALL BE MINIMUM TYPE VIII; GREEN AND BLUE BACKGROUND SHEETING ON GUIDE SIGNS SHALL BE MINIMUM TYPE IX; ALL WHITE, YELLOW, FLUORESCENT YELLOW AND FLUORESCENT YELLOW/GREEN SHEETING SHALL BE TYPE XI. ALL SIGN SHEETING ON OVERHEAD SIGNS SHALL BE TYPE XI.
- (38) ALL EXISTING SIGNS AND SUPPORTS REMOVED UNDER THIS PROJECT SHALL BECOME THE PROPERTY OF THE CONTRACTOR AND ARE NOT A SEPARATE PAY ITEM.
- (39) ALL SIDE ROAD, STOP SIGN MOUNTED STREET NAME SIGNS TO BE SALVAGED AND STORED AT THE DIRECTION OF THE PROJECT ENGINEER FOR DELIVERY TO THE COUNTY (NOT A SEPARATE PAY ITEM).
- (40) REMOVAL OF RAISED PAVEMENT MARKERS THAT ARE IN CONFLICT WITH REQUIRED CONSTRUCTION IS NOT CONSIDERED A SEPARATE PAY ITEM. COST TO BE ABSORBED IN OTHER ITEMS BID.
- (41) REMOVAL OF OBJECT MARKERS IS NOT CONSIDERED A SEPARATE PAY ITEM, AND SHALL BE ABSORBED IN OTHER ITEMS BID.

TRAFFIC CONTROL - TEMPORARY

- (42) THE LOCATION AND SPACING OF SIGNS, SHOWN ON THE TRAFFIC CONTROL PLANS, ARE APPROXIMATE AND MAY BE ADJUSTED AS NECESSARY TO FIT FIELD CONDITIONS.
- (43) ALL TRAFFIC CONTROL DEVICES ON THIS PROJECT SHALL COMPLY WITH PART VI OF THE MUTCD (LATEST EDITION).
- (44) ALL PLASTIC DRUMS SHALL HAVE A BALLASTING COLLAR MADE FROM RECYCLED TRUCK TIRES OR OTHER SUITABLE MATERIAL.
- (45) FLUORESCENT ORANGE SHEETING SHALL BE USED ON ALL CONSTRUCTION AND TRAFFIC CONTROL SIGNS EXCEPT FOR THOSE DESIGNATED ON THE PLANS TO BE BLACK LEGEND AND BORDER ON WHITE BACKGROUND.
- (46) THE CONTRACTOR SHALL COORDINATE WITH THE CONTRACTOR FROM ADJACENT PROJECT(S) IN IMPLEMENTING THE TRAFFIC CONTROL PLAN AS DIRECTED BY THE ENGINEER. ALL CONFLICTING SIGNS SHALL BE COVERED OR REMOVED AS DIRECTED BY THE ENGINEER.
- (47) THE CONTRACTOR SHALL COVER OR REMOVE ANY TEMPORARY TRAFFIC CONTROL SIGNS SHOWN IN THE TRAFFIC CONTROL PLAN THAT DO NOT APPLY TO THE CURRENT PHASE.
- (48) THE RETROREFLECTIVE SIGN SHEETING ON RIGID, TEMPORARY TRAFFIC CONTROL (ORANGE) SIGNS SHALL BE MINIMUM TYPE IX.
- (49) TEMPORARY STRIPING SHALL CONFORM TO FINISHED STRIPE SPECIFICATIONS FOR ALIGNMENT, NEATNESS, AND STRAIGHTNESS.

UTILITIES

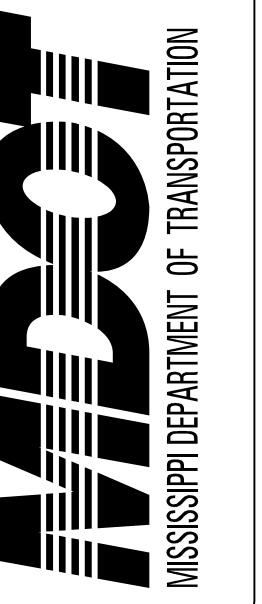
- (50) UTILITIES ON THE DRAWINGS ARE SHOWN IN THEIR ORIGINAL LOCATION BASED UPON THE BEST INFORMATION AVAILABLE TO THE ENGINEER. UTILITIES THAT WERE FOUND TO BE IN CONFLICT WITH CONSTRUCTION HAVE BEEN RELOCATED. PERMITS ARE ON FILE WITH THE DEPARTMENT SHOWING THE APPROXIMATE LOCATION OF UTILITIES RELOCATED WITHIN THE RIGHT-OF-WAY. THE ENGINEER CAN NOT AND DOES NOT WARRANT THAT THIS INFORMATION IS COMPLETE OR ACCURATE. THE CONTRACTOR MUST COORDINATE DIRECTLY WITH THE INVOLVED UTILITY OWNERS TO HAVE UNDERGROUND UTILITY LINES FIELD LOCATED IN ADVANCE OF CONSTRUCTION.
- (51) LIST OF PUBLIC UTILITIES
  - A. POWER - CENTRAL EPA PHILADELPHIA - 601-267-5671
  - B. WATER - PHILADELPHIA UTILITIES - 601-656-3781, CENTRAL WATER ASSOCIATION - 601-656-6171
  - C. TELEPHONE - AT&T DISTRIBUTION GREENWOOD - 662-453-2447
  - D. GAS - CENTERPOINT ENERGY LAUREL/PHILADELPHIA - 601-656-2931
  - E. INTERNET - IN-LINE - 601-956-8909, MAXXSOUTH BROADBAND - 800-457-5351

GENERAL NOTES (CONTINUED)

MISCELLANEOUS

- (52) SOME WORK IS REQUIRED OUTSIDE THE PROJECT LIMITS. NO ADDITIONAL COMPENSATION WILL BE MADE FOR SUCH WORK EXCEPT AS PROVIDED BY SPECIFIC PAY ITEMS INCLUDED IN THE PLANS.
- (53) THE CONTRACTOR SHALL BE RESPONSIBLE FOR MAINTAINING AND RELOCATING MAIL BOXES AS NECESSARY TO MAINTAIN CONTINUOUS MAIL SERVICE THROUGHOUT THE LIFE OF THE PROJECT, THE COST OF WHICH SHALL BE ABSORBED IN OTHER ITEMS BID.
- (54) THE CONTRACTOR IS RESPONSIBLE FOR FIELD-VERIFICATION OF EXISTING GRADES AND MAKING ADJUSTMENTS AS NECESSARY WITH THE APPROVAL OF THE PROJECT ENGINEER.
- (55) THE CONTRACTOR SHALL COORDINATE AND CONDUCT WORK AT LOCAL ROADS AND DRIVEWAYS IN A MANNER SUCH THAT ACCESS IS NOT INTERRUPTED UNNECESSARILY. ACCESS SHALL BE PRESERVED IN THE BEST MANNER POSSIBLE. COORDINATION AND COMMUNICATION WITH LANDOWNERS MAY BE NECESSARY TO PREVENT INTERRUPTION OF DRIVEWAY ACCESS.
- (57) REMOVAL OF SIGNS SHALL BE REQUIRED OUTSIDE OF PROJECT LIMITS. THEY RELATE TO BEGINNING AND END OF 4 LANE. THESE SIGNS ARE TO BE REMOVED AND COST IS ABSORBED.

**NOTICE:**  
 THE NOTES CONTAINED HEREON ARE SPECIFIC TO THE SUBJECT PROJECT AND SHOULD BE REVIEWED IN DETAIL BY THE CONTRACTOR PER SECTION 102.05 OF THE STANDARD SPECIFICATIONS. THE BIDDER IS REQUIRED TO EXAMINE CAREFULLY THE SITE OF THE PROPOSED WORK, THE PROPOSAL, PLANS, STANDARD SPECIFICATIONS, SPECIAL PROVISIONS, NOTICES TO BIDDERS, AND CONTRACT FORMS BEFORE SUBMITTING A PROPOSAL.



DESIGNED BY: GRESHAM SMITH  
 DETAILED BY: JD  
 CHECKED BY: MJ  
 DATE: 07/17/2024

FMS CON: 101649/301000  
 PROJECT NO.: STP-0026-01(072)  
 COUNTY: NESHOPA

GENERAL NOTES

SHEET ID GN-2

SHEET NO. 7