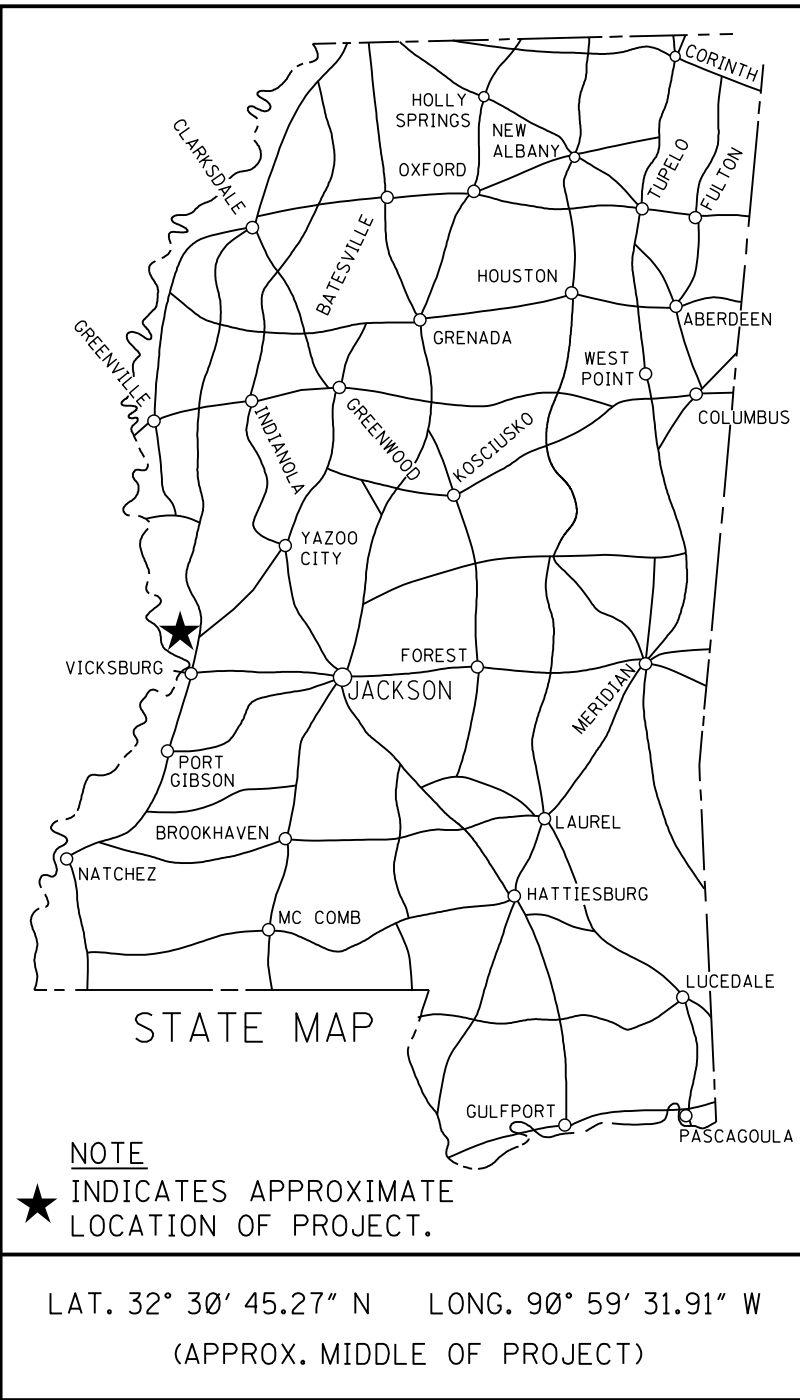


STATE	PROJECT NUMBER	SHEET NO.
MISSISSIPPI	STBG-0400-00(031)	1



DESIGN CONTROL
55 MPH = V (SPEED DESIGN)

ADT (2025) = 800 ; ADT (2045) = 1100
DHV = 120 ; D = 50 % T = 21 %

PERMITS ACQUIRED BY MDOT		
WETLANDS AND WATERS PERMITS		
	WATERS	WETLANDS
NATIONWIDE #14	<input type="checkbox"/> N	<input type="checkbox"/> N
NATIONWIDE (OTHER)*	<input type="checkbox"/> Y	<input type="checkbox"/> Y
GENERAL*	<input type="checkbox"/> N	<input type="checkbox"/> N
INDIVIDUAL (404)*	<input type="checkbox"/> N	<input type="checkbox"/> N
STORMWATER PERMIT		<input type="checkbox"/> Y
Y	REQUIRED, CNOI SUBMITTED BY MDOT (DISTURBED AREA=5 ACRES)	
S	REQUIRED, SCNOI TO BE SUBMITTED BY CONTRACTOR (1 TO 4.9 ACRES)	
N	NO STORMWATER PERMIT REQUIRED (<1 ACRE)	
APPROVED BY: _____		

P S & E DATE: 6/3/2025

APPROVED: _____
DEPUTY EXECUTIVE DIRECTOR / CHIEF ENGINEER
EXECUTIVE DIRECTOR _____



WARREN COUNTY

1

STATE OF MISSISSIPPI

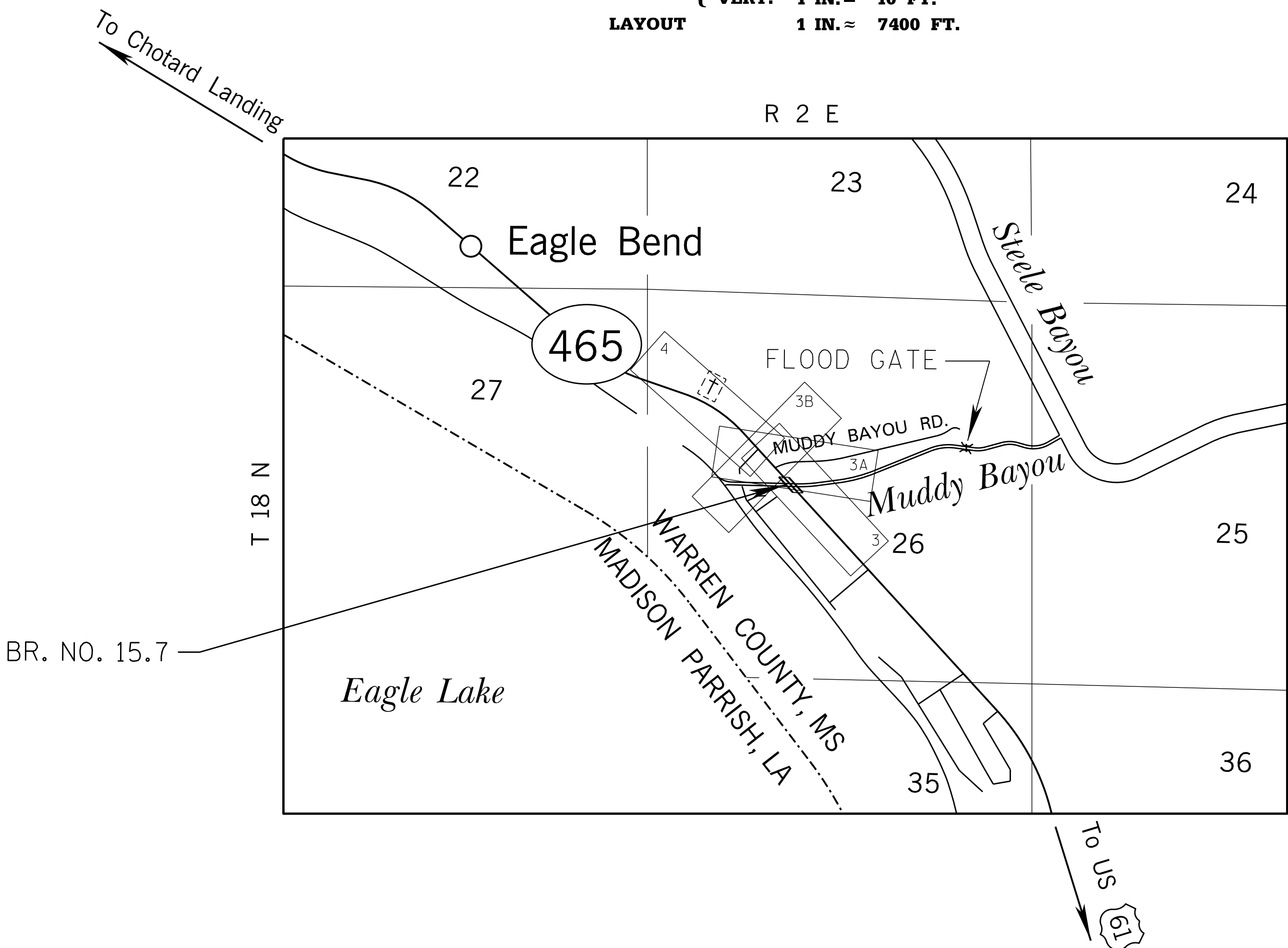
MISSISSIPPI DEPARTMENT OF TRANSPORTATION

PLAN AND PROFILE OF PROPOSED
STATE HIGHWAY
FEDERAL AID PROJECT NO. STBG-0400-00(046)

SR 465
BRIDGE REPLACEMENT AT MUDDY BAYOU, BR. NO. 15.7
WARREN COUNTY

FMS. CONST. NO.: 106110 /301000

PLAN 1 IN. = 100 FT.
PROFILE { HOR. 1 IN. = 100 FT.
VERT. 1 IN. = 10 FT.
LAYOUT 1 IN. = 7400 FT.



EQUATIONS

NONE

EXCEPTIONS

NONE

LENGTH DATA

LENGTH OF ROADWAY	2,841.06 FT.	0.538 MI.
LENGTH OF BRIDGES	443.06 FT.	0.084 MI.
LENGTH OF PROJECT (NET)	3,284.12 FT.	0.622 MI.
LENGTH OF EXCEPTIONS	0.00 FT.	0.000 MI.
LENGTH OF PROJECT (GROSS)	3,284.12 FT.	0.622 MI.

BR-0400-00(046)

106110 /301000

GENERAL INDEX

INCLUDED THIS PROJECT	BEGIN WITH SHEET
<input checked="" type="checkbox"/> ROADWAY	1
<input checked="" type="checkbox"/> PERMANENT SIGNS	1001
<input type="checkbox"/> TRAFFIC SIGNALS	2001
<input type="checkbox"/> ITS COMPONENTS	3001
<input type="checkbox"/> LIGHTING	4001
<input type="checkbox"/> (RESERVED)	5001
<input checked="" type="checkbox"/> ROADWAY STANDARD DWGS	6001
<input type="checkbox"/> BOX CULVERT STD. DRAWINGS (LRFD)	7001
<input type="checkbox"/> BOX CULVERT STD. DRAWINGS (STD. SPEC.)	7501
<input checked="" type="checkbox"/> BRIDGE	8001
<input checked="" type="checkbox"/> CROSS SECTIONS	9001

BRIDGE STRUCTURE REQ'D.

BRIDGE NO. 15.7
SR 465 OVER MUDDY BAYOU
STA. 417+44.47 TO STA. 421+87.53
SPANS: 1 @ 80', 2 @ 100', 2 @ 80'
SKEW: 45° LT. FWD.
TOTAL LENGTH: 44' - 0 3/4"

BOX BRIDGES REQ'D.

NONE

9/8/2025 9:40:15 AM DI.DGN PLAN DIVISION ROADWAY MISSISSIPPI DEPARTMENT OF TRANSPORTATION

1st O.REV.		FMS CON: 106110-301000		STATE	PROJECT NO.
				MISS.	STBG-0400-00(046)
DESCRIPTION OF SHEET		WKG. NO.	SH. NO.	DESCRIPTION OF SHEET	WKG. NO. SH. NO.
TITLE SHEET, DETAILED INDEX, AND GENERAL NOTES - (5)				STANDARD DRAWINGS - ROADWAY DESIGN SHEETS (2017) - (63)	
TITLE SHEET		-	1	PAVEMENT MARKING DETAILS FOR 2-LANE & 4-LANE DIVIDED ROADWAYS	PM-1 6051
DETAILED INDEX		DI-1	2	2-WAY RAISED PAVEMENT MARKERS AT INTERSECTING ROADS (2-LANE)	PM-11 6061
DETAILED INDEX		DI-2	3	RUMBLE STRIPES 2-LANE HIGHWAYS (ASPHALT LANES, 2-FT ASPHALT SHOULDERS)	RS-1 6064
GENERAL NOTES		GN-1	4	TYPICAL TEMPORARY EROSION CONTROL / SEDIMENT CONTROL APPLICATIONS	ECD-1 6101
GENERAL NOTES		GN-2	5	DETAILS OF SEDIMENT BARRIER APPLICATIONS	ECD-2 6102
				DETAILS OF SILT FENCE INSTALLATION	ECD-3 6103
TYPICAL SECTIONS - (5)				DITCH CHECK STRUCTURES, TYPICAL APPLICATIONS AND DETAILS	ECD-4 6104
				TEMPORARY EROSION , SEDIMENT, AND WATER POLLUTION CONTROL MEASURES (SILT FENCE AND HAY BALE DITCH CHECKS)	ECD-5 6105
TYPICAL SECTIONS - SR 465 - NEW CONSTRUCTION & WIDENING & OVERLAY		TS-1	6	DETAILS OF EROSION CONTROL WATTLE DITCH CHECK	ECD-6 6106
TYPICAL SECTIONS - MUDDY BAYOU RD. AND LO-STO RD.		TS-2	7	DETAILS OF EROSION CONTROL SILT DIKE DITCH CHECK	ECD-7 6107
TYPICAL SECTIONS - SR 465 - EXISTING EMBANKMENT REMOVAL		TS-3	8	ROCK DITCH CHECK	ECD-8 6108
TYPICAL SECTIONS - SR 465 - BRIDGE END SHOULDER DETAIL		TS-4	9	ROCK FILTER DAM	ECD-9 6109
TYPICAL SECTIONS - SR 465 - BRIDGE END PAVEMENT DETAIL & PAVED APRON		TS-5	10	ROCK DITCH CHECK WITH SUMP EXCAVATION AND ROCK FILTER DAM	ECD-10 6110
				TYPICAL APPLICATIONS AND DETAILS FOR INLET CONSTRUCTION	ECD-11 6111
QUANTITY SHEETS - (9)				INLET PROTECTION DETAILS FOR SEDIMENT CONTROL STONE ON GRADES AND SAGS	ECD-12 6112
				INLET PROTECTION DETAILS OF WATTLES	ECD-13 6113
SUMMARY OF QUANTITIES - WARREN COUNTY		SQ-1	11	INLET PROTECTION DETAILS OF MANUFACTURED INLET PROTECTION DEVICE	ECD-14 6114
SUMMARY OF QUANTITIES - WARREN COUNTY		SQ-2	12	INLET PROTECTION DETAILS OF SANDBAGS	ECD-15 6115
SUMMARY OF QUANTITIES - WARREN COUNTY		SQ-3	13	STABILIZED CONSTRUCTION ENTRANCE	ECD-16 6116
				TEMPORARY STREAM DIVERSION	ECD-18 6118
ESTIMATED QUANTITIES - REMOVAL ITEMS		EQ-1	14	TEMPORARY STREAM DIVERSION (BOX EXTENSION)	ECD-19 6119
ESTIMATED QUANTITIES - GUARDRAIL, PAVEMENT MARKINGS, BRIDGE END PAVEMENT & EARTHWORK		EQ-2	15	FLOATING TURBIDITY CURTAIN	ECD-20 6120
ESTIMATED QUANTITIES - EROSION CONTROL, FLUMES, CURB & GUTTER, PIPES AND DRIVEWAYS		EQ-3	16	DETAILS OF EROSION CONTROL SANDBAG DITCH CHECK	ECD-21 6121
ESTIMATED QUANTITIES - STANDARD ROADSIDE SIGNS		EQ-4	17	SEDIMENT RETENTION BARRIER	ECD-22 6122
ESTIMATED QUANTITIES - TRAFFIC CONTROL ITEMS AND PERMANENT SIGN ASSEMBLIES		EQ-5	18	DETAILS OF TYPICAL DITCH TREATMENTS	DT-1 6123
ESTIMATED QUANTITIES - TRAFFIC CONTROL SIGNS		EQ-6	19	DITCH TREATMENT INSTALLATION DETAIL FOR SOIL REINFORCING MAT	DT-1A 6124
				TYPICAL TEMPORARY EROSION CONTROL MEASURES (SLOPE DRAIN & TYPE A SILT BASIN)	BAS-A 6125
EASEMENT COORDINATE SHEET (1)				SUPER SILT FENCE	SSF-1 6130
ROW MARKERS AND EASEMENT COORDINATES		RCS-1	20	EROSION CONTROL BLANKET	ECB-1 6131
				GUARDRAIL: "W" BEAM (WOOD POSTS)	GR-1 6201
PLAN & PROFILE SHEETS - (4)				GUARDRAIL: THRIE BEAM (WOOD POSTS)	GR-1A 6202
				GUARDRAIL: "W" BEAM (STEEL POSTS)	GR-1B 6203
SR 465 - STA. 401+45 TO STA. 429+00		3	21	GUARDRAIL: BRIDGE END SECTION-TYPE I (WOOD POSTS) (NEW CONSTRUCTION)	GR-2F 6210
MUDDY BAYOU RD. - STA. 10+00 TO STA. 17+35		3A	22	GUARDRAIL: BRIDGE END SECTION-TYPE I (STEEL POSTS) (NEW CONSTRUCTION)	GR-2G 6211
LO-STO RD. - STA. 18+00 TO STA. 20+00		3B	23	GUARDRAIL: TYPICAL INSTALLATION AT BRIDGE APPROACHES FOR 2-LANE, 2-WAY HIGHWAY	GR-4A 6215
SR 465 - STA. 429+00 TO STA. 434+30		4	24	GUARDRAIL: RUB RAIL HARDWARE	GR-RR 6218
				GUARDRAIL: MISCELLANEOUS HARDWARE	GR-HW 6221
SPECIAL DESIGN SHEETS - (21) ⚠					
				STANDARD ROADSIDE SIGNS	SN-3A 6304
DETAIL OF CONSTRUCTION SIGNING		CS-1	25	STANDARD ROADSIDE SIGNS	SN-3B 6305
TRAFFIC CONTROL PLAN - PHASE 1		TC-1A	26	STANDARD ROADSIDE SIGN ASSEMBLY AND INSTALLATION	SN-4 6306
TRAFFIC CONTROL PLAN - PHASE 1		TC-1B	27	STANDARD ROADSIDE SIGN ASSEMBLY AND INSTALLATION	SN-4A 6307
TRAFFIC CONTROL PLAN - PHASE 1		TC-1C	28		
TRAFFIC CONTROL PLAN - PHASE 2		TC-2A	29	BREAKAWAY SIGN SUPPORTS	SN-6A 6311
TRAFFIC CONTROL PLAN - PHASE 2		TC-2B	30	BREAKAWAY SIGN SUPPORTS	SN-6B 6312
TRAFFIC CONTROL PLAN - PHASE 2		TC-2C	31	TYPICAL INSTALLATION AND DETAILS OF DELINEATORS AND DISTANCE REFERENCE SIGNS	SN-8 6314
				TYPICAL GUARDRAIL DELINEATION	SN-8C 6317
PAVEMENT MARKING - SR 465		PMD-1	32	SIGNING DETAILS FOR BRIDGE APPROACHES	SN-9 6318
				TRAFFIC CONTROL PLAN WITH FLAGGER (ONE-LANE CLOSURE OF TWO WAY TRAFFIC)	TCP-1 6351
INTERSECTION DETAILS - MUDDY BAYOU RD. AND LO-STO RD.		ID-1	33	HIGHWAY SIGN AND BARRICADE DETAILS FOR CONSTRUCTION PROJECTS	TCP-8 6358
				TRAFFIC CONTROL PLAN MOBILE OPERATIONS MULTILANE ROADS AND TWO-LANE ROADS	TCP-9 6359
EROSION CONTROL PLAN - SR 465 - STA. 401+45 TO STA. 429+00		ECP-3	34	TRAFFIC CONTROL PLAN: UNEVEN PAVEMENT DETAILS	TCP-12 6362
EROSION CONTROL PLAN - MUDDY BAYOU RD. - STA. 10+00 TO STA. 17+35		ECP-3A	35	TEMPORARY STRIPING FOR TRAFFIC CONTROL 2-LANE AND 4-LANE DIVIDED HIGHWAYS	TCP-13 6363
EROSION CONTROL PLAN - LO-STO RD. - STA. 18+00 TO STA. 20+00		ECP-3B	36	TRAFFIC CONTROL DETAILS DRUM PLACEMENT AND SHOULDER CLOSURE	TCP-16 6366
EROSION CONTROL PLAN - SR 465 - RIPARIAN BUFFER		ECP-RB-3	37	RIGHT OF WAY MARKER	RW-1 6401
EROSION CONTROL PLAN - SR 465 - STA. 429+00 TO STA. 434+30		ECP-4	38	RURAL DRIVEWAYS	RD-1 6403
				TYPICAL GRADING TRANSITION BETWEEN CUTS AND FILLS	GT-1 6404
VEGETATION SCHEDULE		VS-1	39	SUPERELEVATION TRANSITION FOR LOCAL FACILITIES (V<= 45 MPH)	SE-1 6407
SIGN SUPPORT HARDWARE - 2.5" SQUARE POST		TSS-1	40		
SIGN SUPPORT HARDWARE - 2.0" SQUARE POST		TSS-2	41		
BRIDGE END PAVEMENT		SDBE-1	42		
BRIDGE END PAVEMENT RAIL		SDBER-1	43		
EMBANKMENT SETTLEMENT PLATE DETAILS - SR 465 OVER MUDDY BAYOU		SPD-1	44		
GUARDRAIL: POST INSTALLATION IN PAVED AREAS		SDGR-PI-1	45		
PERMANENT SIGNING PLANS - (1)					
PERMANENT SIGNING PLAN		PSP-1	1001		

FISHER & ARNOLD, INC.		
PS & E PLANS - 6/3/2025		
FMS CON. NO. 106110 / 301000		
REVISIONS		
DATE	SHEET NO.	BY
7/10/25	11, 12 & 13	JMR
7/15/25	2, 3 & 45	JMR
9/8/25	11, 12 & 13	JMR

--	--	--	--	--	--	--	--	--	--	--	--	--	--	--	--	--	--	--	--	--	--	--	--	--	--	--	--	--	--	--	--	--	--	--	--	--	--	--	--	--	--	--	--	--	--	--	--	--	--	--	--	--	--	--	--	--	--	--	--	--	--	--	--	--	--	--	--	--	--	--	--	--	--	--	--	--	--	--	--	--	--	--	--	--	--	--	--	--	--	--	--	--	--	--	--	--	--	--	--	--	--	--	--	--	--	--	--	--	--	--	--	--	--	--	--	--	--	--	--	--	--	--	--	--	--	--	--	--	--	--	--	--	--	--	--	--	--	--	--	--	--	--	--	--	--	--	--	--	--	--	--	--	--	--	--	--	--	--	--	--	--	--	--	--	--	--	--	--	--	--	--	--	--	--	--	--	--	--	--	--	--	--	--	--	--	--	--	--	--	--	--	--	--	--	--	--	--	--	--	--	--	--	--	--	--	--	--	--	--	--	--	--	--	--	--	--	--	--	--	--	--	--	--	--	--	--	--	--	--	--	--	--	--	--	--	--	--	--	--	--	--	--	--	--	--	--	--	--	--	--	--	--	--	--	--	--	--	--	--	--	--	--	--	--	--	--	--	--	--	--	--	--	--	--	--	--	--	--	--	--	--	--	--	--	--	--	--	--	--	--	--	--	--	--	--	--	--	--	--	--	--	--	--	--	--	--	--	--	--	--	--	--	--	--	--	--	--	--	--	--	--	--	--	--	--	--	--	--	--	--	--	--	--	--	--	--	--	--	--	--	--	--	--	--	--	--	--	--	--	--	--	--	--	--	--	--	--	--	--	--	--	--	--	--	--	--	--	--	--	--	--	--	--	--	--	--	--	--	--	--	--	--	--	--	--	--	--	--	--	--	--	--	--	--	--	--	--	--	--	--	--	--	--	--	--	--	--	--	--	--	--	--	--	--	--	--	--	--	--	--	--	--	--	--	--	--	--	--	--	--	--	--	--	--	--	--	--	--	--	--	--	--	--	--	--	--	--	--	--	--	--	--	--	--	--	--	--	--	--	--	--	--	--	--	--	--	--	--	--	--	--	--	--	--	--	--	--	--	--	--	--	--	--	--	--	--	--	--	--	--	--	--	--	--	--	--	--	--	--	--	--	--	--	--	--	--	--	--	--	--	--	--	--	--	--	--	--	--	--	--	--	--	--	--	--	--	--	--	--	--	--	--	--	--	--	--	--	--	--	--	--	--	--	--	--	--	--	--	--	--	--	--	--	--	--	--	--	--	--	--	--	--	--	--	--	--	--	--	--	--	--	--	--	--	--	--	--	--	--	--	--	--	--	--	--	--	--	--	--	--	--	--	--	--	--	--	--	--	--	--	--	--	--	--	--	--	--	--	--	--	--	--	--	--	--	--	--	--	--	--	--	--	--	--	--	--	--	--	--	--	--	--	--	--	--	--	--	--	--	--	--	--	--	--	--	--	--	--	--	--	--	--	--	--	--	--	--	--	--	--	--	--	--	--	--	--	--	--	--	--	--	--	--	--	--	--	--	--	--	--	--	--	--	--	--	--	--	--	--	--	--	--	--	--	--	--	--	--	--	--	--	--	--	--	--	--	--	--	--	--	--	--	--	--	--	--	--	--	--	--	--	--	--	--	--	--	--	--	--	--	--	--	--	--	--	--	--	--	--	--	--	--	--	--	--	--	--	--	--	--	--	--	--	--	--	--	--	--	--	--	--	--	--	--	--	--	--	--	--	--	--	--	--	--	--	--	--	--	--	--	--	--	--	--	--	--	--	--	--	--	--	--	--	--	--	--	--	--	--	--	--	--	--	--	--	--	--	--	--	--	--	--	--	--	--	--	--	--	--	--	--	--	--	--	--	--	--	--	--	--	--	--	--	--	--	--	--	--	--	--	--	--	--	--	--	--	--	--	--	--	--	--	--	--	--	--	--	--	--	--	--	--	--	--	--	--	--	--	--	--	--	--	--	--	--	--	--	--	--	--	--	--	--	--	--	--	--	--	--	--	--	--	--	--	--	--	--	--	--	--	--	--	--	--	--	--	--	--	--	--	--	--	--	--	--	--	--	--	--	--	--	--	--	--	--	--	--	--	--	--	--	--	--	--	--	--	--	--	--	--	--	--	--	--	--	--	--	--	--	--	--	--	--	--	--	--	--	--	--	--	--	--	--	--	--	--	--	--	--	--	--	--	--	--	--	--	--	--	--	--	--	--	--	--	--	--	--	--	--	--	--	--	--	--	--	--	--	--	--	--	--	--	--	--	--	--	--	--	--	--	--	--	--	--	--	--	--	--	--	--	--	--	--	--	--	--	--	--	--	--	--	--	--	--	--	--	--	--	--	--	--	--	--	--	--	--	--	--	--	--	--	--	--	--	--	--	--	--	--	--	--	--	--	--	--	--	--	--	--	--	--	--	--	--	--	--	--	--	--	--	--	--	--	--	--	--	--	--	--	--	--	--	--	--	--	--	--	--	--	--	--	--	--	--	--	--	--	--	--	--	--	--	--	--	--	--	--	--	--	--	--	--	--	--	--	--	--	--	--	--	--	--	--	--	--	--	--	--	--	--	--	--	--	--	--	--	--	--	--	--	--	--	--	--	--	--	--	--	--	--	--	--	--	--	--	--	--	--	--	--	--	--	--	--	--	--	--	--	--	--	--	--	--	--	--	--	--	--	--	--	--	--	--	--	--	--	--	--	--	--	--	--	--	--	--	--	--	--	--	--	--	--	--	--	--	--	--	--	--	--	--	--	--	--	--	--	--	--	--	--	--	--	--	--	--	--	--	--	--	--	--	--	--	--	--	--	--	--	--	--	--	--	--	--	--	--	--	--	--	--	--	--	--	--	--	--	--	--	--	--	--	--	--	--	--	--	--	--	--	--	--	--	--	--	--	--	--	--	--	--	--	--	--	--	--	--	--	--	--	--	--	--	--	--	--	--	--	--	--	--	--	--	--	--	--	--	--	--	--	--	--	--	--	--	--	--	--	--	--	--	--	--	--	--	--	--	--	--	--	--	--	--	--	--	--	--	--	--	--	--	--	--	--	--	--	--	--	--	--	--	--	--	--	--	--	--	--	--	--	--	--	--	--	--	--	--	--	--	--	--	--	--	--	--	--	--	--	--	--	--	--	--	--	--	--	--	--	--	--	--	--	--	--	--	--	--	--	--	--	--	--	--	--	--	--	--	--	--	--	--	--



STATE	PROJECT NO.
MISS.	STBG-0400-00(046)

DESCRIPTION OF SHEET	WKG. NO.	SH. NO.
STANDARD DRAWINGS - ROADWAY DESIGN SHEETS (2017) - (CON'T.)		
SUPERELEVATION CASE 1 ROTATION ABOUT THE CENTERLINE	SE-2A	6408
SUPERELEVATION RUNOFF CASE 1 ROTATION ABOUT THE CENTERLINE	SE-3A	6413
DRIVEWAYS, CURB & GUTTER, & SIDEWALK	SD-1	6419
MISCELLANEOUS DETAIL SHEET, 1. STACKED PIPE JOINTS, 2. EXCAVATION AT GRADE POINTS	MDS-1	6425
DETAILS OF PAVED FLUMES	PF-1	6426
PIPE CULVERT INSTALLATION	PI-1	6501
FLARED END SECTION FOR CONCRETE PIPE	FE-1	6530

SR 465 - STA. 402+00 TO STA. 434+20
MUDDY BAYOU RD. - STA. 10+27 TO STA. 17+54
LO-STO RD. - STA. 17+84 TO STA. 19+80

TOTAL SHEETS (EXCLUDING BRIDGE SHEETS) - 127 
(SEE SHEET 8001 FOR BRIDGE SHEETS)

--	--	--	--	--	--	--	--	--	--	--	--	--	--	--	--	--	--	--	--	--	--	--	--	--	--	--	--	--	--	--	--	--	--	--	--	--	--	--	--	--	--	--	--	--	--	--	--	--	--	--	--	--	--	--	--	--	--	--	--	--	--	--	--	--	--	--	--	--	--	--	--	--	--	--	--	--	--	--	--	--	--	--	--	--	--	--	--	--	--	--	--	--	--	--	--	--	--	--	--	--	--	--	--	--	--	--	--	--	--	--	--	--	--	--	--	--	--	--	--	--	--	--	--	--	--	--	--	--	--	--	--	--	--	--	--	--	--	--	--	--	--	--	--	--	--	--	--	--	--	--	--	--	--	--	--	--	--	--	--	--	--	--	--	--	--	--	--	--	--	--	--	--	--	--	--	--	--	--	--	--	--	--	--	--	--	--	--	--	--	--	--	--	--	--	--	--	--	--	--	--	--	--	--	--	--	--	--	--	--	--	--	--	--	--	--	--	--	--	--	--	--	--	--	--	--	--	--	--	--	--	--	--	--	--	--	--	--	--	--	--	--	--	--	--	--	--	--	--	--	--	--	--	--	--	--	--	--	--	--	--	--	--	--	--	--	--	--	--	--	--	--	--	--	--	--	--	--	--	--	--	--	--	--	--	--	--	--	--	--	--	--	--	--	--	--	--	--	--	--	--	--	--	--	--	--	--	--	--	--	--	--	--	--	--	--	--	--	--	--	--	--	--	--	--	--	--	--	--	--	--	--	--	--	--	--	--	--	--	--	--	--	--	--	--	--	--	--	--	--	--	--	--	--	--	--	--	--	--	--	--	--	--	--	--	--	--	--	--	--	--	--	--	--	--	--	--	--	--	--	--	--	--	--	--	--	--	--	--	--	--	--	--	--	--	--	--	--	--	--	--	--	--	--	--	--	--	--	--	--	--	--	--	--	--	--	--	--	--	--	--	--	--	--	--	--	--	--	--	--	--	--	--	--	--	--	--	--	--	--	--	--	--	--	--	--	--	--	--	--	--	--	--	--	--	--	--	--	--	--	--	--	--	--	--	--	--	--	--	--	--	--	--	--	--	--	--	--	--	--	--	--	--	--	--	--	--	--	--	--	--	--	--	--	--	--	--	--	--	--	--	--	--	--	--	--	--	--	--	--	--	--	--	--	--	--	--	--	--	--	--	--	--	--	--	--	--	--	--	--	--	--	--	--	--	--	--	--	--	--	--	--	--	--	--	--	--	--	--	--	--	--	--	--	--	--	--	--	--	--	--	--	--	--	--	--	--	--	--	--	--	--	--	--	--	--	--	--	--	--	--	--	--	--	--	--	--	--	--	--	--	--	--	--	--	--	--	--	--	--	--	--	--	--	--	--	--	--	--	--	--	--	--	--	--	--	--	--	--	--	--	--	--	--	--	--	--	--	--	--	--	--	--	--	--	--	--	--	--	--	--	--	--	--	--	--	--	--	--	--	--	--	--	--	--	--	--	--	--	--	--	--	--	--	--	--	--	--	--	--	--	--	--	--	--	--	--	--	--	--	--	--	--	--	--	--	--	--	--	--	--	--	--	--	--	--	--	--	--	--	--	--	--	--	--	--	--	--	--	--	--	--	--	--	--	--	--	--	--	--	--	--	--	--	--	--	--	--	--	--	--	--	--	--	--	--	--	--	--	--	--	--	--	--	--	--	--	--	--	--	--	--	--	--	--	--	--	--	--	--	--	--	--	--	--	--	--	--	--	--	--	--	--	--	--	--	--	--	--	--	--	--	--	--	--	--	--	--	--	--	--	--	--	--	--	--	--	--	--	--	--	--	--	--	--	--	--	--	--	--	--	--	--	--	--	--	--	--	--	--	--	--	--	--	--	--	--	--	--	--	--	--	--	--	--	--	--	--	--	--	--	--	--	--	--	--	--	--	--	--	--	--	--	--	--	--	--	--	--	--	--	--	--	--	--	--	--	--	--	--	--	--	--	--	--	--	--	--	--	--	--	--	--	--	--	--	--	--	--	--	--	--	--	--	--	--	--	--	--	--	--	--	--	--	--	--	--	--	--	--	--	--	--	--	--	--	--	--	--	--	--	--	--	--	--	--	--	--	--	--	--	--	--	--	--	--	--	--	--	--	--	--	--	--	--	--	--	--	--	--	--	--	--	--	--	--	--	--	--	--	--	--	--	--	--	--	--	--	--	--	--	--	--	--	--	--	--	--	--	--	--	--	--	--	--	--	--	--	--	--	--	--	--	--	--	--	--	--	--	--	--	--	--	--	--	--	--	--	--	--	--	--	--	--	--	--	--	--	--	--	--	--	--	--	--	--	--	--	--	--	--	--	--	--	--	--	--	--	--	--	--	--	--	--	--	--	--	--	--	--	--	--	--	--	--	--	--	--	--	--	--	--	--	--	--	--	--	--	--	--	--	--	--	--	--	--	--	--	--	--	--	--	--	--	--	--	--	--	--	--	--	--	--	--	--	--	--	--	--	--	--	--	--	--	--	--	--	--	--	--	--	--	--	--	--	--	--	--	--	--	--	--	--	--	--	--	--	--	--	--	--	--	--	--	--	--	--	--	--	--	--	--	--	--	--	--	--	--	--	--	--	--	--	--	--	--	--	--	--	--	--	--	--	--	--	--	--	--	--	--	--	--	--	--	--	--	--	--	--	--	--	--	--	--	--	--	--	--	--	--	--	--	--	--	--	--	--	--	--	--	--	--	--	--	--	--	--	--	--	--	--	--	--	--	--	--	--	--	--	--	--	--	--	--	--	--	--	--	--	--	--	--	--	--	--	--	--	--	--	--	--	--	--	--	--	--	--	--	--	--	--	--	--	--	--	--	--	--	--	--	--	--	--	--	--	--	--	--	--	--	--	--	--	--	--	--	--	--	--	--	--	--	--	--	--	--	--	--	--	--	--	--	--	--	--	--	--	--	--	--	--	--	--	--	--	--	--	--	--	--	--	--	--	--	--	--	--	--	--	--	--	--	--	--	--	--	--	--	--	--	--	--	--	--	--	--	--	--	--	--	--	--	--	--	--	--	--	--	--	--	--	--	--	--	--	--	--	--	--	--	--	--	--	--	--	--	--	--	--	--	--	--	--	--	--	--	--	--	--	--	--	--	--	--	--	--	--	--	--	--	--	--	--	--	--	--	--	--	--	--	--	--	--	--	--	--	--	--	--	--	--	--	--	--	--	--	--	--	--	--	--	--	--	--	--	--	--	--	--	--	--	--	--	--	--	--	--	--	--	--	--	--	--	--	--	--	--	--	--	--	--	--	--	--	--	--	--	--	--	--	--	--	--	--	--	--	--	--	--	--	--	--	--	--	--

STATE	PROJECT NO.
MISS.	STBG-0400-00(046)

GENERAL NOTES (CONT.)

- (22) ALL EXISTING SIGNS WHICH ARE TO BE REMOVED AS A PART OF THIS PROJECT ARE NOT IN CONFLICT WITH CONSTRUCTION SHALL REMAIN IN PLACE UNTIL NEW SIGNS ARE INSTALLED UNLESS NOTED OR DIRECTED OTHERWISE BY THE PROJECT ENGINEER. ROADWAY SIGNS THAT ARE IN CONFLICT WITH CONSTRUCTION SHALL BE REMOVED AND RELOCATED BY THE CONTRACTOR AS DIRECTED BY THE ENGINEER, THE COST OF WHICH SHALL BE ABSORBED IN OTHER ITEMS BID.
- (23) ALL PERMANENT SIGNS SHALL CONFORM TO THE LATEST EDITION OF THE MANUAL ON UNIFORM TRAFFIC CONTROL DEVICES.
- (24) ALL SIGN LOCATIONS SHALL BE APPROVED BY THE PROJECT ENGINEER PRIOR TO INSTALLATION.
- (25) THE RETROREFLECTIVE SIGN SHEETING ON PERMANENT GROUND-MOUNTED SIGNS SHALL BE AS FOLLOWS: ALL WHITE, YELLOW, FLUORESCENT YELLOW, AND FLUORESCENT YELLOW/GREEN SHEETING SHALL BE TYPE XI.
- (26) ALL EXISTING SIGNS AND SUPPORTS REMOVED UNDER THIS PROJECT SHALL BECOME THE PROPERTY OF THE CONTRACTOR AND ARE NOT A SEPARATE PAY ITEM.
- (27) ALL SIDE ROAD, STOP SIGN MOUNTED STREET NAME SIGNS ARE TO BE SALVAGED AND STORED AT THE DIRECTION OF THE PROJECT ENGINEER FOR DELIVERY TO THE CITY OR COUNTY (NOT A SEPARATE PAY ITEM).
- (28) REMOVAL OF RAISED PAVEMENT MARKERS THAT ARE IN CONFLICT WITH REQUIRED CONSTRUCTION IS NOT CONSIDERED A SEPARATE PAY ITEM. COST TO BE ABSORBED IN OTHER ITEMS BID.
- (29) REMOVAL OF OBJECT MARKERS IS NOT CONSIDERED A SEPARATE PAY ITEM, AND SHALL BE ABSORBED IN OTHER ITEMS BID.

UTILITIES

- 30 THE LOCATION AND SPACING OF SIGNS SHOWN ON THE TRAFFIC CONTROL PLANS ARE APPROXIMATE AND MAY BE ADJUSTED AS NECESSARY TO FIT FIELD CONDITIONS.
 - 31 ALL TRAFFIC CONTROL DEVICES ON THIS PROJECT SHALL COMPLY WITH PART VI OF THE **MUTCD** (LATEST EDITION).
 - 32 ALL PLASTIC DRUMS SHALL HAVE A BALLASTING COLLAR MADE FROM RECYCLED TIRES OR OTHER SUITABLE MATERIAL.
 - 33 FLUORESCENT ORANGE SHEETING SHALL BE USED ON ALL CONSTRUCTION AND TRAFFIC CONTROL SIGNS EXCEPT FOR THOSE DESIGNATED ON THE PLANS TO BE BLACK LEGEND AND BORDER ON WHITE BACKGROUND.
 - 34 THE RETROREFLECTIVE SIGN SHEETING ON RIGID, TEMPORARY TRAFFIC CONTROL (ORANGE) SIGNS SHALL BE TYPE IX.
 - 35 TEMPORARY STRIPING SHALL CONFORM TO FINISHED STRIPE SPECIFICATIONS FOR ALIGNMENT, NEATNESS AND STRAIGHTNESS.
- UTILITIES
- 36 UTILITIES ON THE DRAWINGS ARE SHOWN IN THEIR ORIGINAL LOCATION BASED UPON THE BEST INFORMATION AVAILABLE TO THE ENGINEER. UTILITIES THAT WERE FOUND TO BE IN CONFLICT WITH CONSTRUCTION HAVE BEEN RELOCATED. PERMITS ARE ON FILE WITH THE DEPARTMENT SHOWING THE APPROXIMATE LOCATION OF UTILITIES RELOCATED WITHIN THE RIGHT-OF-WAY. THE ENGINEER CAN NOT AND DOES NOT WARRANT THAT THIS INFORMATION IS COMPLETE OR ACCURATE. THE CONTRACTOR MUST COORDINATE DIRECTLY WITH THE INVOLVED UTILITY OWNERS TO HAVE UNDERGROUND UTILITY LINES FIELD LOCATED IN ADVANCE OF CONSTRUCTION.
 - 37 FOR LIST OF PUBLIC UTILITIES, SEE WORKING NO. 3.

SOME WORK IS REQUIRED OUTSIDE THE PROJECT LIMITS. NO ADDITIONAL COMPENSATION WILL BE MADE FOR SUCH WORK EXCEPT AS PROVIDED BY SPECIFIC PAY ITEMS INCLUDED IN THE PLANS.

- 39) THE CONTRACTOR IS RESPONSIBLE FOR FIELD-VERIFICATION OF EXISTING GRADES AND MAKING ADJUSTMENTS AS NECESSARY WITH THE APPROVAL OF THE PROJECT ENGINEER.
- 40) THE CONTRACTOR SHALL COORDINATE AND CONDUCT WORK AT LOCAL ROADS AND DRIVEWAYS IN A MANNER SUCH THAT ACCESS IS NOT INTERRUPTED UNNECESSARILY. ACCESS SHALL BE PRESERVED IN THE BEST MANNER POSSIBLE. COORDINATION AND COMMUNICATION WITH LANDOWNERS MAY BE NECESSARY TO PREVENT INTERRUPTION OF DRIVEWAY ACCESS.
- 41) THE CONTRACTOR SHALL BE RESPONSIBLE FOR MAINTAINING AND RELOCATING MAIL BOXES AS NECESSARY TO MAINTAIN CONTINUOUS MAIL SERVICE THROUGHOUT THE LIFE OF THE PROJECT, THE COST OF WHICH SHALL BE ABSORBED IN OTHER ITEMS BID.

THE NOTES CONTAINED HEREON ARE SPECIFIC TO THE SUBJECT PROJECT AND SHOULD BE REVIEWED IN DETAIL BY THE CONTRACTOR. PER SECTION 102.05 OF THE STANDARD SPECIFICATIONS, "THE BIDDER IS REQUIRED TO EXAMINE CAREFULLY THE SITE OF THE PROPOSED WORK, THE PROPOSAL, PLANS, STANDARD SPECIFICATIONS, SPECIAL PROVISIONS, NOTICES TO BIDDERS, AND CONTRACT FORMS BEFORE SUBMITTING A PROPOSAL."

[illegible]

STATE OF MISSISSIPPI

MISSISSIPPI DEPARTMENT OF TRANSPORTATION

STATE	PROJECT NUMBER	SHEET NO.
MISSISSIPPI	STBG-0400-00(047) STBG-0400-00(048)	1

GENERAL INDEX

INCLUDED THIS PROJECT	BEGIN WITH SHEET
<input checked="" type="checkbox"/> ROADWAY	1
<input type="checkbox"/> PERMANENT SIGNS	1001
<input type="checkbox"/> TRAFFIC SIGNALS	2001
<input type="checkbox"/> ITS COMPONENTS	3001
<input type="checkbox"/> LIGHTING	4001
<input type="checkbox"/> (RESERVED)	5001
<input checked="" type="checkbox"/> ROADWAY STANDARD DWGS	6001
<input type="checkbox"/> BOX CULVERT STD. DRAWINGS (LRFD)	7001
<input type="checkbox"/> BOX CULVERT STD. DRAWINGS (STD. SPEC.)	7501
<input type="checkbox"/> BRIDGE	8001
<input checked="" type="checkbox"/> CROSS SECTIONS	9001

BRIDGE STRUCTURES REQ'D.
NONE

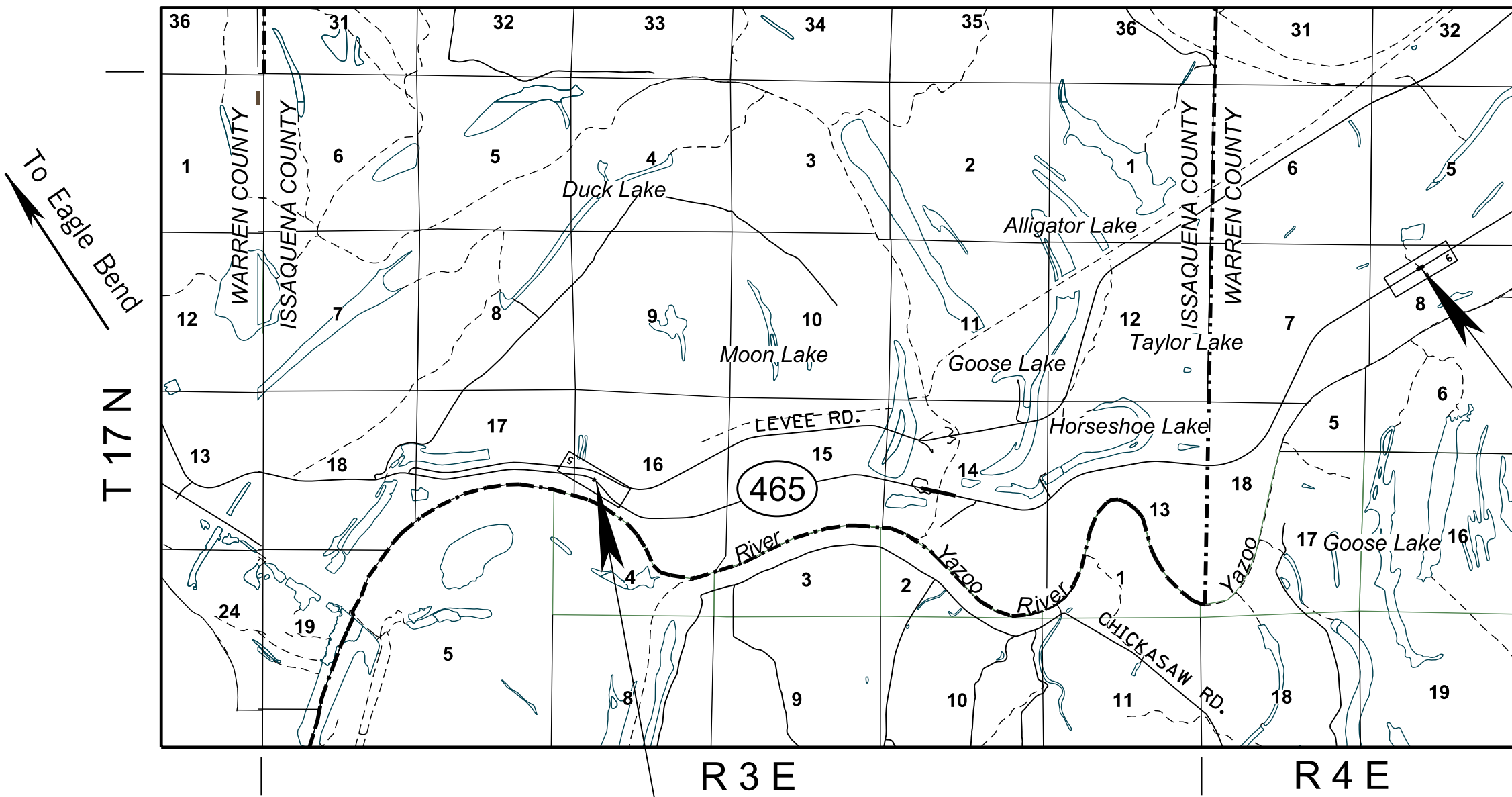
BOX BRIDGES REQ'D.
NONE

PLAN AND PROFILE OF PROPOSED
STATE HIGHWAY
FEDERAL AID PROJ. NOS. STBG-0400-00(047)
STBG-0400-00(048)

SR 465 BRIDGE REPLACEMENT
BRIDGE NOS. 8.7 AND 2.6
ISSAQUENA & WARREN COUNTIES

FMS CON. NO. 106110/302000 ISSAQUENA CO.
106110/303000 WARREN CO.

SCALES		
PLAN		1 IN. = 100 FT.
PROFILE {	HOR.	1 IN. = 100 FT.
	VERT.	1 IN. = 10 FT.
LAYOUT		1 IN. = 3000 FT.



SITE 2
BR. NO. 2.6

SITE 1
BR. NO. 8.7

EQUATIONS
NONE

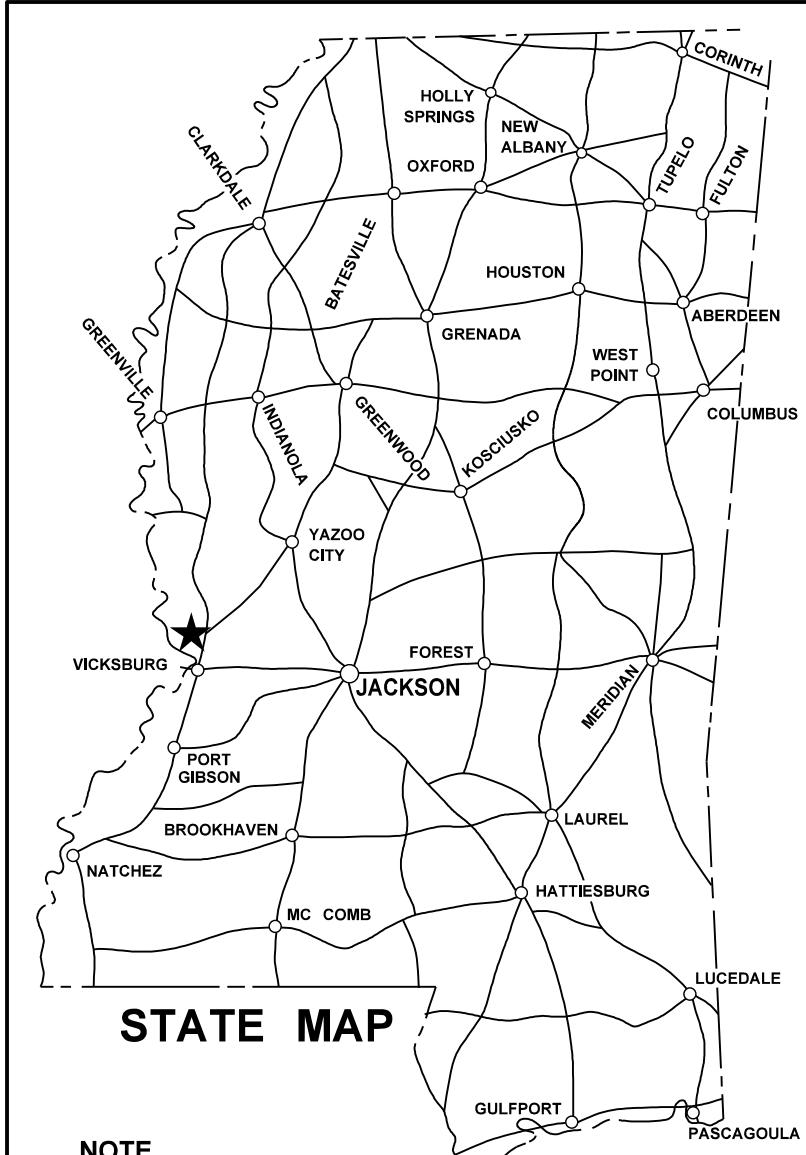
EXCEPTIONS
NONE

LENGTH DATA

ISSAQUENA CO.			
LENGTH OF ROADWAY	868.80	FT.	0.165
LENGTH OF BRIDGES	0.00	FT.	0.000
LENGTH OF PROJECT (NET)			0.165
LENGTH OF EXCEPTIONS	0.00	FT.	0.000
LENGTH OF PROJECT (GROSS)			0.165

WARREN CO.			
LENGTH OF ROADWAY	950.00	FT.	0.180
LENGTH OF BRIDGES	0.00	FT.	0.000
LENGTH OF PROJECT (NET)			0.180
LENGTH OF EXCEPTIONS	0.00	FT.	0.000
LENGTH OF PROJECT (GROSS)			0.180

TOTAL			
LENGTH OF ROADWAY	1,818.80	FT.	0.344
LENGTH OF BRIDGES	0.00	FT.	0.00
LENGTH OF PROJECT (NET)			0.344
LENGTH OF EXCEPTIONS			0.000
LENGTH OF PROJECT (GROSS)			0.344



NOTE
★ INDICATES APPROXIMATE
LOCATION OF PROJECT.
LAT. 32°27'08"N LONG. 90°52'39"W
(APPROX. MIDDLE OF PROJECT)

DESIGN CONTROL	
55 MPH	= V (SPEED DESIGN)
ADT (2025) = 800	: ADT (2045) = 1100
DHV = 120	: D = 50 % T = 21 %

PERMITS ACQUIRED BY MDOT		
WETLANDS AND WATERS PERMITS		
	WATERS	WETLANDS
NATIONWIDE #14	<input type="checkbox"/> N	<input type="checkbox"/> N
NATIONWIDE (OTHER)*	<input type="checkbox"/> Y	<input type="checkbox"/> N
GENERAL*	<input type="checkbox"/> N	<input type="checkbox"/> N
INDIVIDUAL (404)*	<input type="checkbox"/> N	<input type="checkbox"/> N
STORMWATER PERMIT <input type="checkbox"/> S		
Y	REQUIRED, CNOI SUBMITTED BY MDOT (DISTURBED AREA = 5 ACRES)	
S	REQUIRED, CNOI TO BE SUBMITTED BY CONTRACTOR (1 TO 4.99 ACRES)	
N	NO STORMWATER PERMIT REQUIRED (<1 ACRE)	
APPROVED BY: _____		

P S & E DATE: 08/28/2025

APPROVED: _____
DEPUTY EXECUTIVE DIRECTOR / CHIEF ENGINEER
EXECUTIVE DIRECTOR



FISHER & ARNOLD, INC.		
PS & E PLANS - 08/28/2025		
FMS CON. NO. 106110 / 302000 & 303000		
REVISIONS		
DATE	SHEET NO.	BY

[illegible]

GENERAL NOTES

GENERAL NOTES (CONT.)

- ⑪ WIRE FENCE BACKING WILL BE REQUIRED FOR ALL SILT FENCE. (SEE WK. NO. ECD-3)

EROSION CONTROL - TEMPORARY

- 12) THE EROSION CONTROL DEVICES REFERENCED IN THESE PLANS ARE A MINIMUM REQUIREMENT. IT IS THE RESPONSIBILITY OF THE CONTRACTOR TO ENSURE THAT SILT DOES NOT LEAVE THE RIGHT OF WAY OR CONTAMINATE WATERS OF THE U. S. DURING CONSTRUCTION. THE CONTRACTOR SHALL SUBMIT AN EROSION CONTROL PLAN PRIOR TO COMMENCEMENT OF WORK AND MAINTAIN THE PLAN DURING CONSTRUCTION. ANY ADDITIONAL SILT BASINS NOT SHOWN IN THE PLANS SHALL BE INCLUDED IN THE CONTRACTOR'S EROSION CONTROL PLAN PRIOR TO SUBMITTING FOR APPROVAL.

ALL ITEMS OF WORK ASSOCIATED WITH THE INSTALLATION OF A CONSTRUCTION ENTRANCE SHALL BE ABSORBED IN OTHER ITEMS OF WORK.

- PAVEMENT, BASE, AND SHOULDERS
- ⑭ WHERE MILLING IS REQUIRED, THE CONTRACTOR SHALL PROVIDE OUTLETS IN THE EXISTING SHOULDERS AT SUFFICIENT INTERVALS TO PREVENT POOLING OR STANDING WATER ON THE MILLED SURFACE, THE COST OF WHICH SHALL BE ABSORBED IN OTHER ITEMS BID.

- ## PAVEMENT, BASE, AND SHOULDERS

- ## PLANS
- ⑮ IF COLORS ARE USED ON PLAN/PROFILE SHEETS, THEY ARE INTENDED TO VISUALLY EASE THE LOCATION OF ELEMENTS FOR USERS OF THESE DRAWINGS. ALTHOUGH THE INTENT IS TO CATEGORIZE EVERYTHING AS EITHER EXISTING OR PROPOSED, IT IS THE END USER'S RESPONSIBILITY TO ENSURE ALL ELEMENTS ARE INTERPRETED CORRECTLY, REGARDLESS OF COLOR.

- 16 ALL ADDENDA TO THESE PLANS WILL BE POSTED TO WWW.MDOT.MS.GOV UNDER THE PROPOSAL ADDENDA COLUMN. BIDDERS ARE ADVISED THAT HARD COPIES OF ANY ADDENDA FOR THIS PROJECT WILL NOT BE MAILED. IT IS THE BIDDER'S RESPONSIBILITY TO CHECK AND SEE IF ANY ADDENDA HAVE BEEN POSTED FOR THIS PROJECT.

- ## ROADSIDE BARRIERS

- 17) ALL DIMENSIONS AND SPACINGS FOR BRIDGE RAIL CONNECTORS SHALL BE VERIFIED IN THE FIELD BY THE CONTRACTOR PRIOR TO FABRICATION.

- TRAFFIC CONTROL - PERMANENT

18. ALL EXISTING SIGNS WHICH ARE TO BE REMOVED AS A PART OF THIS PROJECT THAT ARE NOT IN CONFLICT WITH CONSTRUCTION SHALL REMAIN IN PLACE UNTIL NEW SIGNS ARE INSTALLED UNLESS NOTED OR DIRECTED OTHERWISE BY THE PROJECT ENGINEER. ROADWAY SIGNS THAT ARE IN CONFLICT WITH CONSTRUCTION SHALL BE REMOVED AND RELOCATED BY THE CONTRACTOR AS DIRECTED BY THE ENGINEER, THE COST OF WHICH SHALL BE ABSORBED IN OTHER ITEMS BID.

- ## ENVIRONMENTAL & CLEARING

- (NOTES CONTINUED NEXT SHEET)

[illegible]

STATE	PROJECT NO.
MISS.	STBG-0400-00(047) STBG-0400-00(048)

20 ALL SIDE ROAD, STOP SIGN MOUNTED STREET NAME SIGNS ARE TO BE SALVAGED AND STORED AT THE DIRECTION OF THE PROJECT ENGINEER FOR DELIVERY TO THE CITY (NOT A SEPARATE PAY ITEM).

- 21) REMOVAL OF RAISED PAVEMENT MARKERS THAT ARE IN CONFLICT WITH REQUIRED CONSTRUCTION IS NOT CONSIDERED A SEPARATE PAY ITEM. COST TO BE ABSORBED IN OTHER ITEMS BID.

- 22 REMOVAL OF OBJECT MARKERS IS NOT CONSIDERED A SEPARATE PAY ITEM, AND SHALL BE ABSORBED IN OTHER ITEMS BID.

TRAFFIC CONTROL - TEMPORARY

- 23 THE LOCATION AND SPACING OF SIGNS SHOWN ON THE TRAFFIC CONTROL PLANS ARE APPROXIMATE AND MAY BE ADJUSTED AS NECESSARY TO FIT FIELD CONDITIONS.

- ②4 ALL TRAFFIC CONTROL DEVICES ON THIS PROJECT SHALL COMPLY WITH PART VI OF THE **MUTCD** (LATEST EDITION).

- (25) ALL PLASTIC DRUMS SHALL HAVE A BALLASTING COLLAR MADE FROM RECYCLED TIRES OR OTHER SUITABLE MATERIAL.

- 26) FLUORESCENT ORANGE SHEETING SHALL BE USED ON ALL CONSTRUCTION AND TRAFFIC CONTROL SIGNS EXCEPT FOR THOSE DESIGNATED ON THE PLANS TO BE BLACK LEGEND AND BORDER ON WHITE BACKGROUND.

- ②7 THE RETROREFLECTIVE SIGN SHEETING ON RIGID, TEMPORARY TRAFFIC CONTROL (ORANGE) SIGNS SHALL BE TYPE IX.

- ②⑧ TEMPORARY STRIPING SHALL CONFORM TO FINISHED STRIPE SPECIFICATIONS FOR ALIGNMENT, NEATNESS AND STRAIGHTNESS.

UTILITIES

- 29 UTILITIES ON THE DRAWINGS ARE SHOWN IN THEIR ORIGINAL LOCATION BASED UPON THE BEST INFORMATION AVAILABLE TO THE ENGINEER. UTILITIES THAT WERE FOUND TO BE IN CONFLICT WITH CONSTRUCTION HAVE BEEN RELOCATED. PERMITS ARE ON FILE WITH THE DEPARTMENT SHOWING THE APPROXIMATE LOCATION OF UTILITIES RELOCATED WITHIN THE RIGHT-OF-WAY. THE ENGINEER CAN NOT AND DOES NOT WARRANT THAT THIS INFORMATION IS COMPLETE OR ACCURATE. THE CONTRACTOR MUST COORDINATE DIRECTLY WITH THE INVOLVED UTILITY OWNERS TO HAVE UNDERGROUND UTILITY LINES FIELD LOCATED IN ADVANCE OF CONSTRUCTION.

- ③⑩ FOR LIST OF PUBLIC UTILITIES, SEE WORKING NO. 3.

MISCELLANEOUS

- 31) SOME WORK IS REQUIRED OUTSIDE THE PROJECT LIMITS. NO ADDITIONAL COMPENSATION WILL BE MADE FOR SUCH WORK EXCEPT AS PROVIDED BY SPECIFIC PAY ITEMS INCLUDED IN THE PLANS.

- 32 THE CONTRACTOR IS RESPONSIBLE FOR FIELD-VERIFICATION OF EXISTING GRADES AND MAKING ADJUSTMENTS AS NECESSARY WITH THE APPROVAL OF THE PROJECT ENGINEER.

- 33 THE CONTRACTOR SHALL COORDINATE AND CONDUCT WORK AT LOCAL ROADS AND DRIVEWAYS IN A MANNER SUCH THAT ACCESS IS NOT INTERRUPTED UNNECESSARILY. ACCESS SHALL BE PRESERVED IN THE BEST MANNER POSSIBLE. COORDINATION AND COMMUNICATION WITH LANDOWNERS MAY BE NECESSARY TO PREVENT INTERRUPTION OF DRIVEWAY ACCESS.

- 34) THE CONTRACTOR SHALL BE RESPONSIBLE FOR MAINTAINING AND RELOCATING MAIL BOXES AS NECESSARY TO MAINTAIN CONTINUOUS MAIL SERVICE THROUGHOUT THE LIFE OF THE PROJECT, THE COST OF WHICH SHALL BE ABSORBED IN OTHER ITEMS BID.

THE NOTES CONTAINED HEREON ARE SPECIFIC TO THE SUBJECT PROJECT AND SHOULD BE REVIEWED IN DETAIL BY THE CONTRACTOR. PER SECTION 102.05 OF THE STANDARD SPECIFICATIONS, "THE BIDDER IS REQUIRED TO EXAMINE CAREFULLY THE SITE OF THE PROPOSED WORK, THE PROPOSAL, PLANS, STANDARD SPECIFICATIONS, SPECIAL PROVISIONS, NOTICES TO BIDDERS, AND CONTRACT FORMS BEFORE SUBMITTING A PROPOSAL."

[illegible]