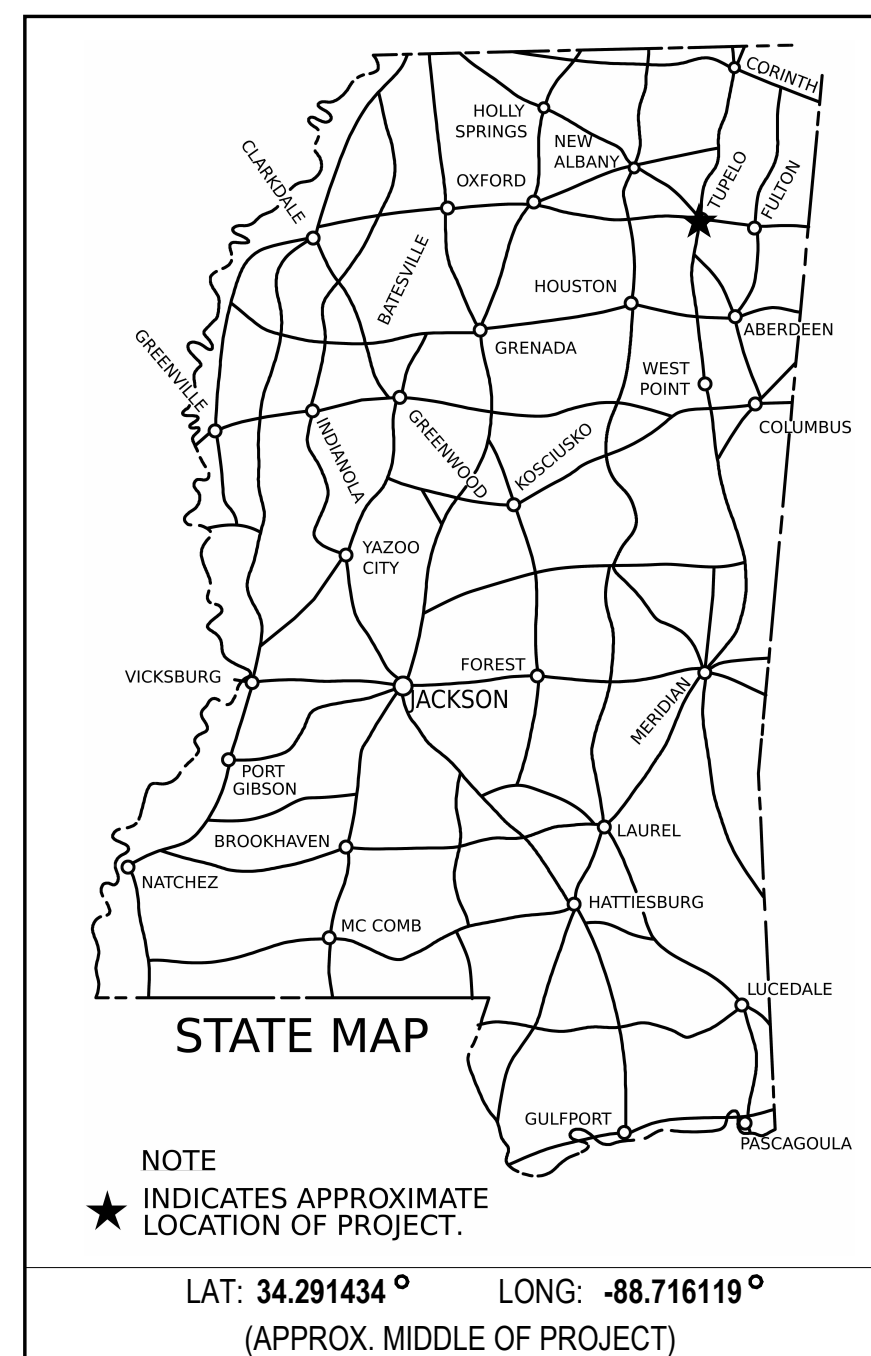


**STATE OF MISSISSIPPI
MISSISSIPPI DEPARTMENT OF TRANSPORTATION**

District 1 Shop Electrical Upgrade

STATE PROJ. NO. BWO-1051-41(004)

LEE COUNTY



PROJECT LOCATION

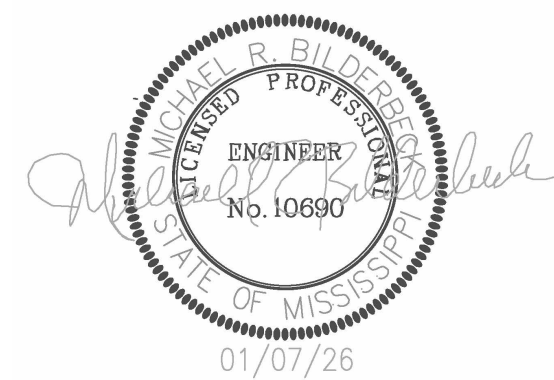
1909 N Gloster St.
Tupelo, MS 38804

Google Earth

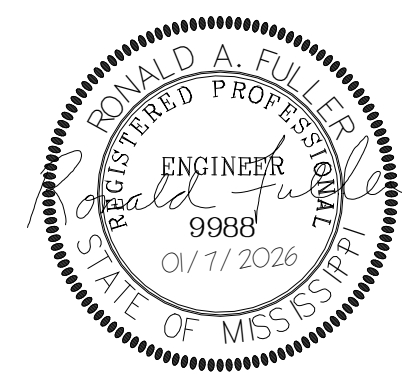


PERMITS ACQUIRED BY MDOT		
WETLANDS AND WATERS PERMITS		
	WATERS	WETLANDS
NATIONWIDE #14	N	N
NATIONWIDE (OTHER)*	N	N
GENERAL *	N	N
INDIVIDUAL (404)*	N	N
STORMWATER PERMIT		N
Y	REQUIRED. CNOI SUBMITTED BY MDOT (DISTURBED AREA=5 ACRES)	
S	REQUIRED. SCNOI TO BE SUBMITTED BY CONTRACTOR (1 TO 4.99 ACRES)	
N	NO STORMWATER PERMIT REQUIRED (<1 ACRE)	
APPROVED BY:		

CONSTRUCTION PROJECT DATA	
EXTERNAL PROJ. NO.	FMS & DETAIL
BWO-1051-41(004)	503808-301000



MECHANICAL



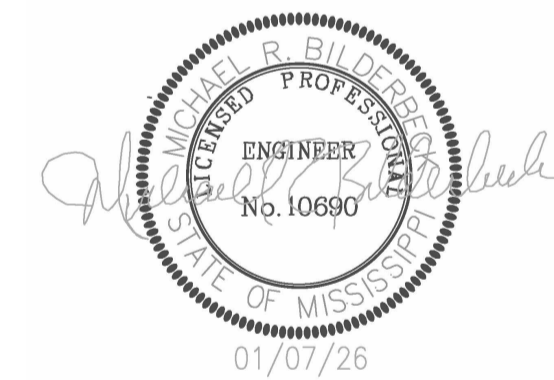
ELECTRICAL



P S & E DATE: 1-7-2026
APPROVED:
DEPUTY EXECUTIVE DIRECTOR / CHIEF ENGINEER
EXECUTIVE DIRECTOR

District 1 Shop Electrical Upgrade

1909 North Gloster Street
Tupelo, MS 38804



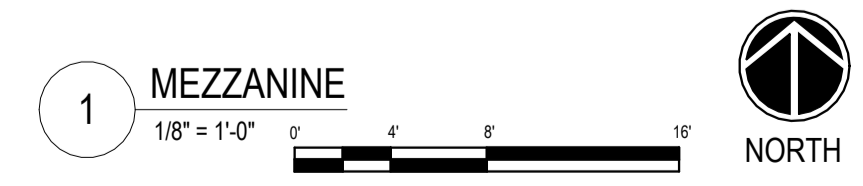
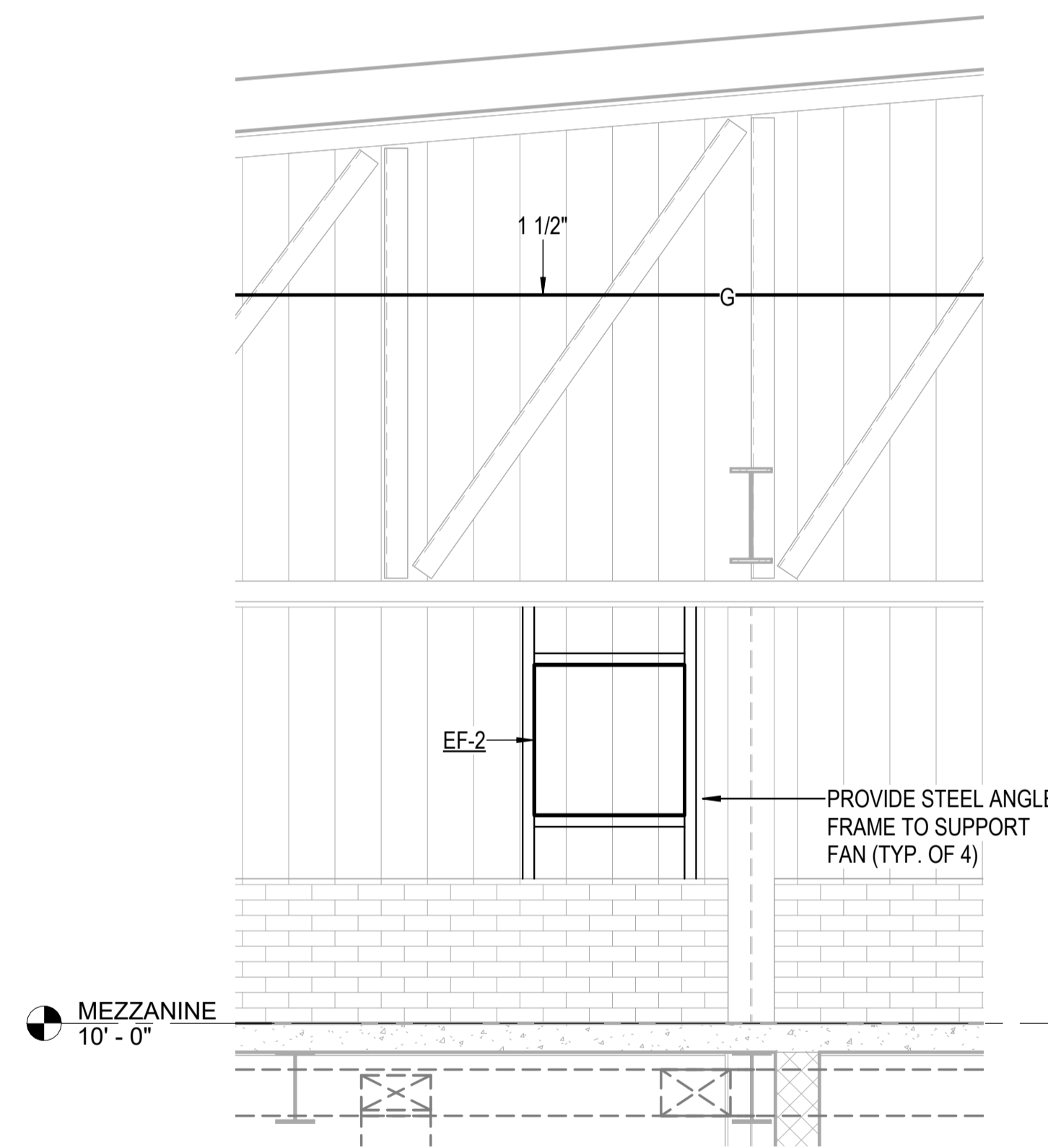
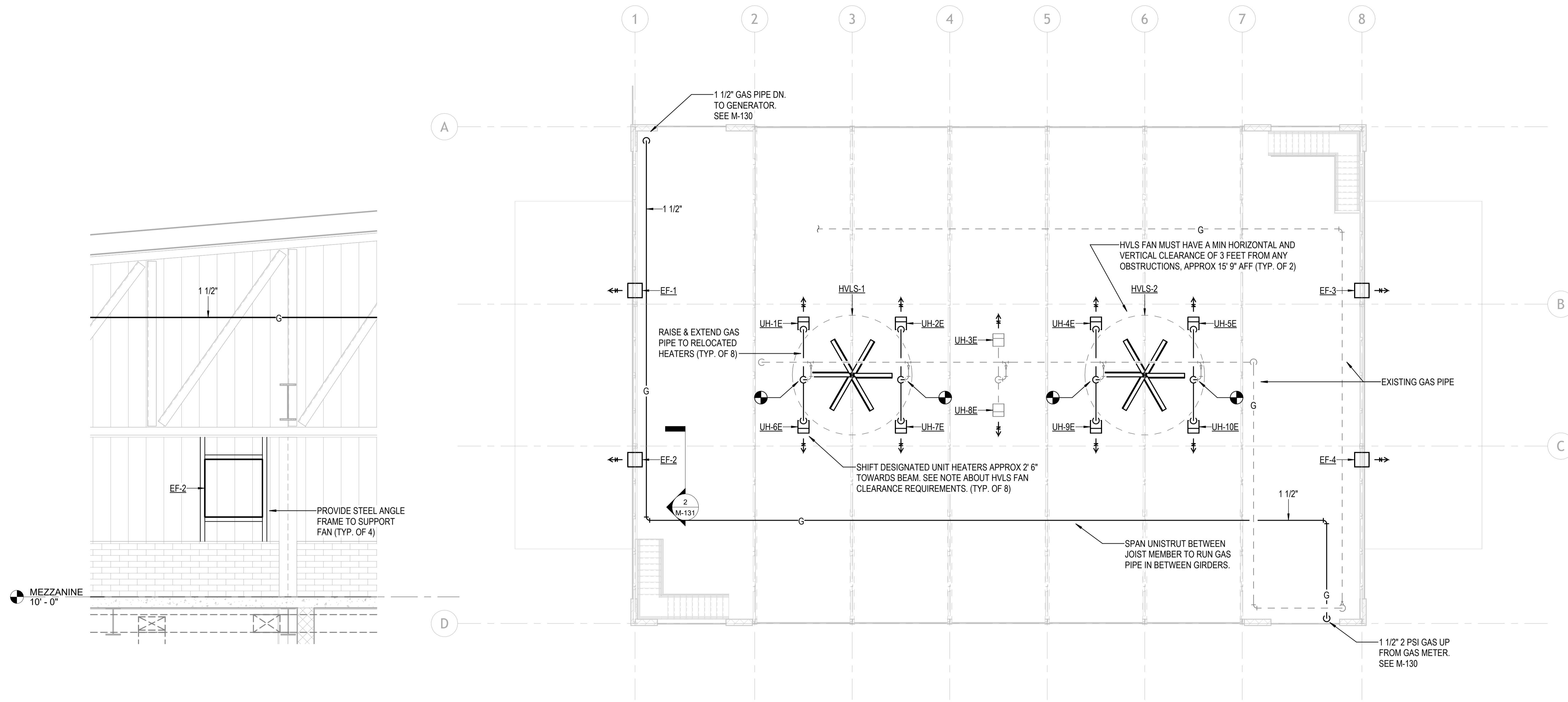
No.	Description	Date	Issued by

DESIGNED BY: JAM
 DETAILED BY: JAM
 CHECKED BY: MRB
 DATE: January 7, 2026

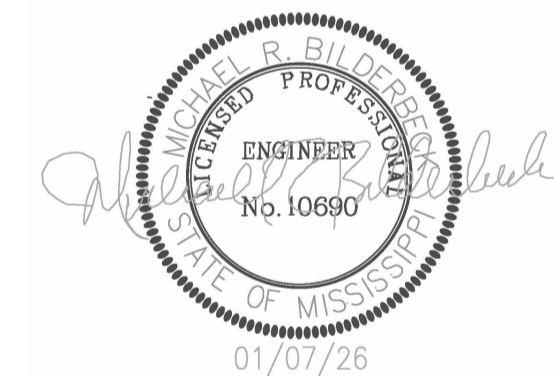
MEZZANINE PLAN

WORKING NO. **M-131**

SHEET NO. 4



District 1 Shop Electrical Upgrade
 1909 North Gloster Street
 Tupelo, MS 38804



No.	Description	Date	Issued by

DESIGNED BY: JAM
 DETAILED BY: JAM
 CHECKED BY: MRB
 DATE: January 7, 2026

SCHEDULES

FAN SCHEDULE										
UNIT	TYPE	AIR FLOW (cfm)	EXT. S.P.	DRIVE	ELEC. DATA			SERVICE	BASIS OF DESIGN-GREENHECK (OR EQUAL BY COOK)	NOTES
					HP	FLA	VOLTAGE			
EF-1,2,3,4	WALL PROPELLER	5,000	0.4	DIRECT	1	-	208V/1Ø	MEZZANINE	AER-20-02-0625-VG	1, 3
HVLS-1,2	12' HVLS	71,000	-	DIRECT	3/4	7	208V/1Ø	SHOP AREA	DC-6-12	2

- WALL HOUSING WITH DISCHARGE SHUTTER, BIRDSCREEN, & MOTOR GUARD.
- PROVIDE CONTROLLER EQUAL TO GREENHECK "HVLS KEYPAD CONTROLLER".
- MAX WALL DIMENSION 34x34.

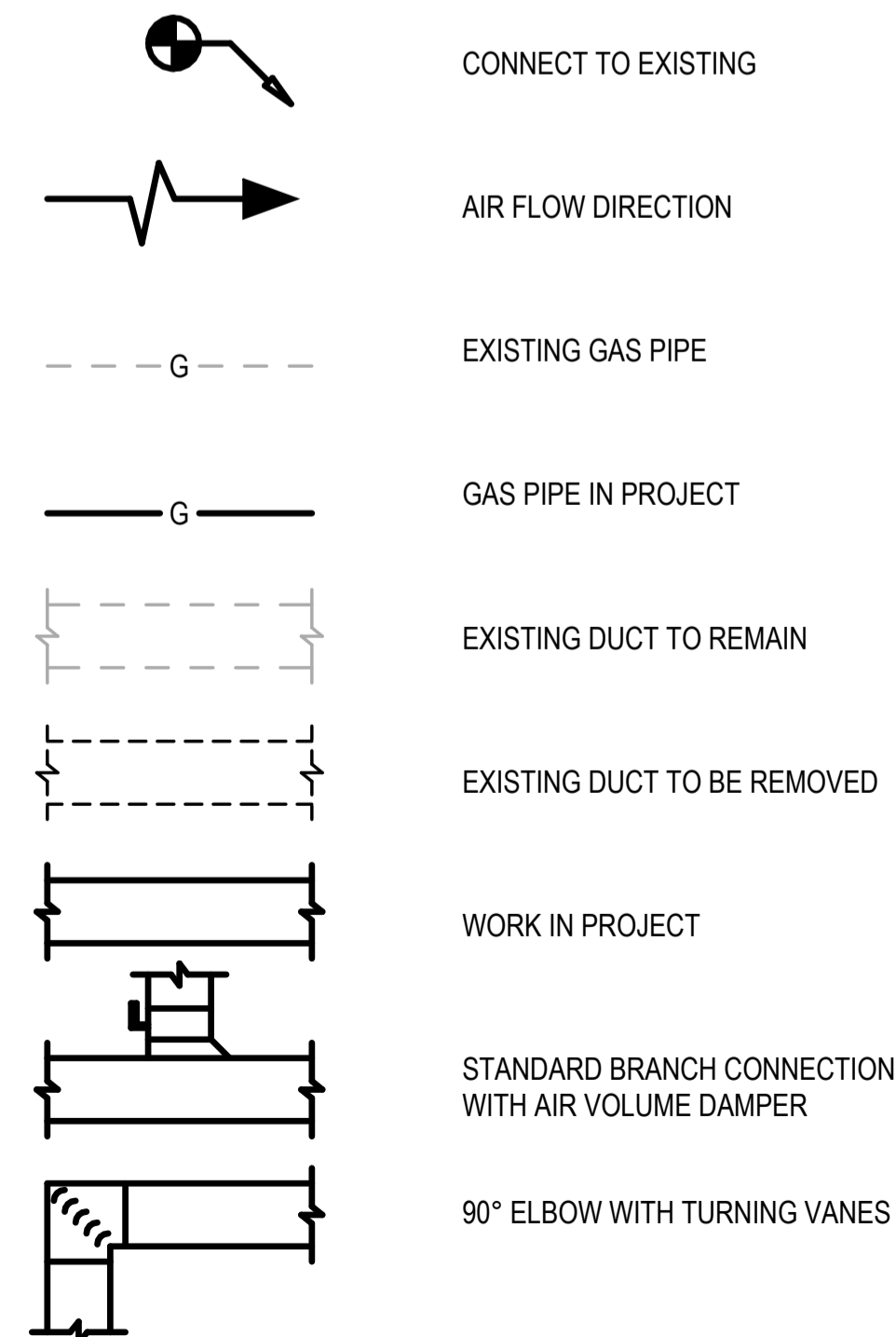
KITCHEN HOOD SCHEDULE													
UNIT	TYPE	AIR FLOW (cfm)	EXT. S.P.	DRIVE	ELEC. DATA			HOOD DIMENSIONS (in.)			SERVICE	BASIS OF DESIGN-GREENHECK	NOTES
					HP	FLA	VOLTAGE	LENGTH	WIDTH	HEIGHT			
KH-1	WALL MOUNTED	250	N/A	DIRECT	-	1.2	115V/1Ø	30	24	12.5	EXISTING ELECTRIC RANGE	GRRS	1, 2, 3, 4

- SELF-CONTAINED FIRE SUPPRESSION SYSTEM.
- RECIRCULATING AIRFLOW
- HOOD-MOUNTED LCD SCREEN.
- MANUAL PULL STATION

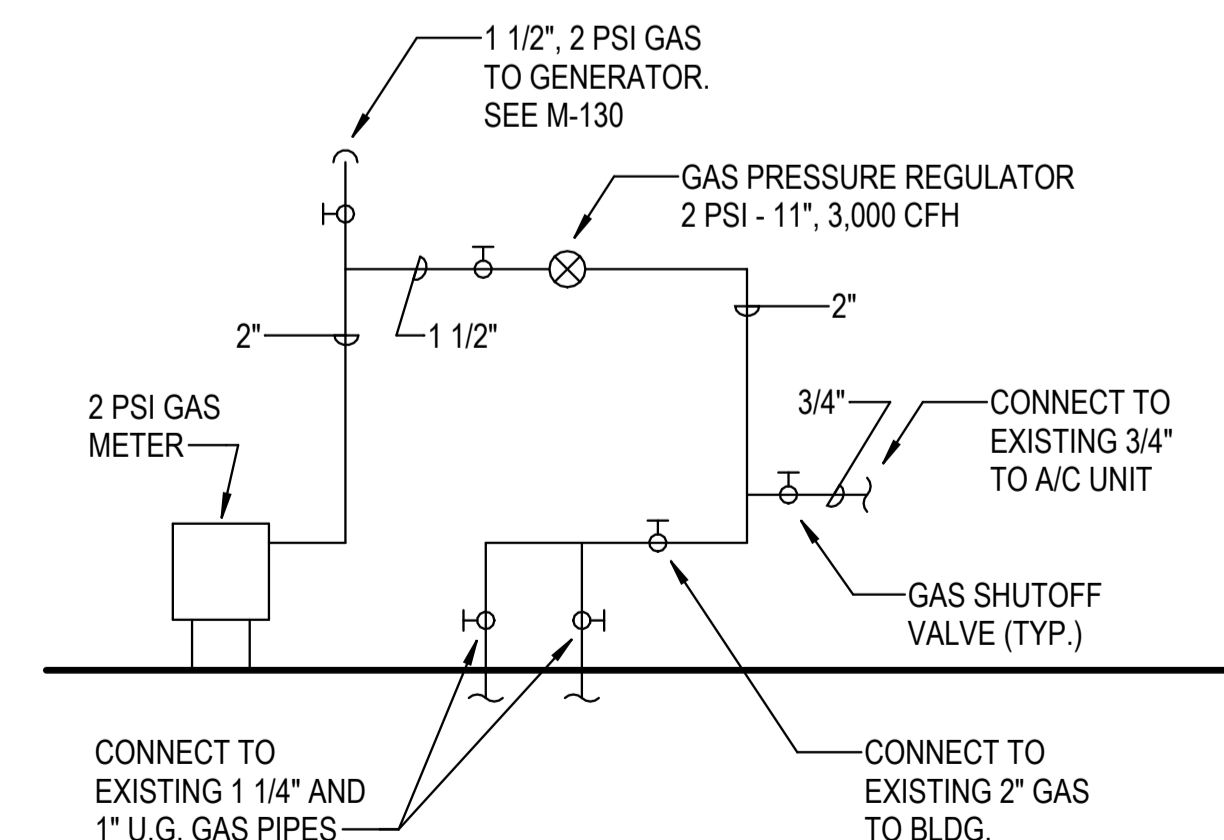
EXISTING AIR CONDITIONER UNIT SCHEDULE												
MARK	CFM	COOLING DATA (95 AMBIENT)			ELECTRICAL DATA			NAT. GAS		RHEEM	AREA SERVED	NOTES
		ENT. AIR		NET CAP (MBH)	V/PH/Hz	MCA	MOCP	INPUT MBH	OUTPUT MBH			
		DB	WB									
AC-1E	1,600	80	67	48	208/1/60	21	30	80	65	RGEA1604	NORTH OFFICES	1
AC-2E	1,000	80	67	30	208/1/60	21	30	80	65	RGEA1430	SOUTH OFFICES	2

- INSTALL A TIME DELAY RELAY IN THE MOTOR STARTING CIRCUIT. SET THE DELAY TO 5 SECONDS.
- INSTALL A TIME DELAY RELAY IN THE MOTOR STARTING CIRCUIT. SET THE DELAY TO 10 SECONDS.

LEGEND



GAS LOAD SCHEDULE	
EQUIPMENT	INPUT IN MBH
INSIDE BUILDING	
GENERATOR	2,150 MBH
WATER HEATER	36 MBH
RADIANT HEATERS	1,030 MBH
AC-1,2	180 MBH
OUTSIDE BUILDING	
PRESSURE WASHER	450 MBH
UNIT HEATERS	1,260 MBH
TOTAL MBH/CFH	5,106 MBH



1 GAS METER SCHEMATIC
N.T.S.

