

LOOKING



VISION 21

Mississippi Looking A.H.E.A.D.

(Advocating Highways for Economic Advancement and Development)

A.H.E.A.D.



1987 Four-Lane
Highway Program
including Vision 21

June 30, 2012





Mike Tagert
Northern District Commissioner



Dick Hall
Central District Commissioner,
Chairman



Tom King
Southern District Commissioner



Melinda McGrath
Interim Executive Director/
Chief Engineer



Mark McConnell
Deputy Executive Director/
Chief Engineer



Lisa Hancock
Deputy Executive Director/
Administration

Contents

A Brief History	3
Executive Summary	4
Map: 1987 Four-Lane Highway Program	6
Brief Summary of Phases I, II and III	7
Projects to be Let to Contract	7
Financial Report	
Receipts and Disbursements	8
Projected vs. Actual Receipts for Fiscal Years 1988-2011	11
Highway Segments Open to Traffic	12
Map: Status of Construction	14
List of Construction Projects	15
Right of Way Not Acquired	22
Map: Status of Right of Way	23
Vision 21 Program	25
Gaming Highway Program	27

Mississippi Looking A.H.E.A.D. is a report published by the Public Affairs Division of the Mississippi Department of Transportation (MDOT). Correspondence should be directed to MDOT, Attn. Public Affairs Division, P.O. Box 1850, Jackson, MS 39215-1850. *Mississippi Looking A.H.E.A.D.* is available to the general public upon request by writing to the address given above, by emailing comments@mdot.state.ms.us, or by calling (601) 359-7074. This annual report is also available for viewing on the Internet at www.goMDOT.com.

A Brief History

In 1987, the Mississippi Legislature passed a long-range highway program, which was one of the most comprehensive in the country. The program was estimated to cost \$1.6 billion and expected to build 1,077 miles of four-lane highways over a 14-year period.

The highways were to be built in phases based primarily on vehicle count and road capacity. Three phases were established with each having a mileage goal and an estimated cost.

Highway user revenues were dedicated to build the system. In 1998, the Mississippi Department of Transportation was given the authority to borrow \$200 million through revenue bonds if funding resources dictated.

Major sources of funding designated to pay for the program included a motor fuel tax, a \$5 car tag fee, a highway contractor's tax, federal aid, and proceeds from the revenue bonds.

In the 2002 Legislative Session, Phase IV was incorporated into Vision 21, a needs-based highway program.



Pictured are lawmakers and highway officials who were instrumental in securing passage of the 1987 Four-Lane Highway Program. They are (from left to right): Charlie Williams, H. L. Merideth, Billy McCoy, John David Pennebaker, Anse Dees, Bill Minor, John William Powell, Sam W. Waggoner, Zack Stewart, Robert Joiner, John R. Tabb, Ollie Mohamed, and Robert Montgomery; (seated): Morris Lewis, Buddie Newman, and Brad Dye.

Executive Summary

Fiscal Year 2012

Mississippi's transportation system isn't just about highways anymore. With a commitment to rails, ports, public transit and air services, our state is truly multimodal. But in moving our citizens and our goods, we cannot overlook the monumental impact an enhanced highway system has made.

This enhanced highway system didn't just happen. In 1987, state lawmakers put into place a means to fund this effort and through a shared vision among legislative leaders and grass-roots advocates, the 1987 Four-Lane Highway Program (or A.H.E.A.D.* Program as it is sometimes called) was formed.

The Mississippi Department of Transportation's goal at the inception of the 1987 Program was that every Mississippian would be linked to a four-lane highway within 30 miles or 30 minutes. MDOT continues to make great strides toward reaching that goal.

Mississippians have already realized the increase in economic activity and safety that four-lane highways bring. As of June 30, 2012, 1,075.2 miles of new four-lane highway are in use by the public.

This report summarizes the status of Vision 21 Construction Projects as of June 30, 2012. It also provides a record of funding and investments throughout the history of the Vision 21 program — documenting Mississippi's steady progress toward its vision.

* A.H.E.A.D. is an acronym for Advocating Highways for Economic Advancement and Development.

Where are we today?

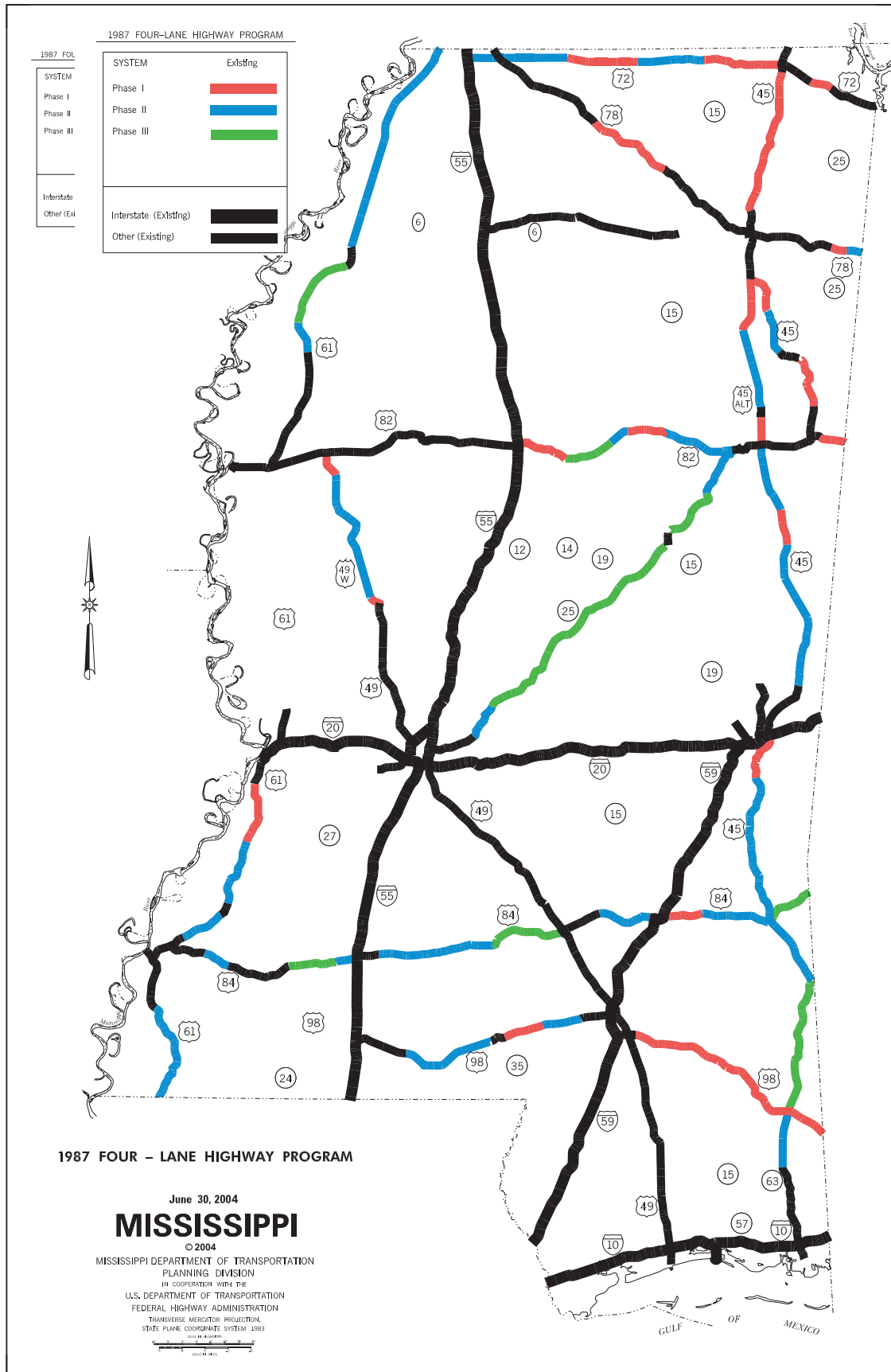
The original drafters of the 1987 Program intended that the work be completed in phases that overlapped each other with most of the work being conducted in Phase II. Detailed information about the projects that have been completed is on pages 12-13 and those that are left to be let to contract is available on page 7.

Phase IV of the program is now part of Vision 21, a needs-based highway program passed by the Mississippi Legislature during the 2002 session. An account of Vision 21 projects for 2012 can be found on page 26.

Today major industries and smaller businesses can be found popping up all around our state. At least part of the credit can go to the original A.H.E.A.D members who came together two decades ago with a dream for a statewide four-lane highway system that would benefit all of Mississippi. Credit should also be given to the legislative leaders and MDOT personnel who worked diligently to continue their “vision” through Vision 21.

MDOT remains committed to the 1987 Four-Lane Highway Program and Vision 21 Program. However, the funding structure put in place with the Four-Lane Program legislation has not been adjusted since its passage in 1987 and the state’s transportation revenues are not keeping pace with needs of the state’s transportation system. Quite simply, there is not enough transportation funding to address the state’s maintenance needs, let alone address system capacity needs. As a result, MDOT has been forced to shift to a maintenance-only approach and focus first on system preservation. With the support of our legislators, the Transportation Commission and the MDOT staff are committed to finding a solution so that Mississippi continues to move AHEAD with a Vision for the future.

Map: 1987 Four-Lane Highway Program



Brief Summary of Phases I, II and III

Miles Open to Four-Lane Traffic.	1,082.1
Miles Currently Under Construction	0.0
Miles Remaining to be Let	5.9
TOTAL miles improved once Phases I, II and III have been completed	1,088.0

Remaining Projects to be Let to Contract

Fiscal Year 2012 (July 1, 2011 - June 30, 2012)

Phase I

All highway segments of Phase I are completed.

Phase III

All highway segments of Phase III are completed or under contract.

Fiscal Year 2012 (July 1, 2011 - June 30, 2012)

Phase II

County	Highway	Project Description
Claiborne	US 61	From the Natchez Trace Parkway to the four-lane section north of Port Gibson. Grade, drain, bridge and pave four lanes.



Financial Report

	FY 1993	FY 1994	FY 1995	FY 1996	FY 1997	FY 1998	FY 1999	FY 2000	FY 2001
Receipts									
Fuel Tax	60.5	63.9	65.0	66.7	67.5	72.2	74.2	78.0	74.5
Lubricating Oil Tax	1.1	1.1	1.2	1.2	1.1	1.1	1.2	1.3	1.2
Contractor's Tax	2.9	3.7	1.6	1.7	5.9	5.5	5.5	4.8	4.6
Tag Fees	10.3	10.2	11.3	11.4	11.6	11.9	12.1	12.3	12.6
Debt Service Funds	20.9	25.5	42.0	42.0	42.0	42.0	42.0	42.0	42.0
Federal Funds	64.8	67.7	55.7	61.9	54.8	49.8	25.2	61.3	50.9
State Matching Funds	5.2	5.2	6.8	6.8	6.8	6.8	6.8	6.8	6.8
Interest Income								8.5	5.5
Other Income/adjustments			0.1	0.2		0.5	0.8	1.2	
Bond Proceeds							203.9		
Total Receipts	165.7	177.3	183.7	191.9	189.7	189.8	371.7	216.2	198.1
Disbursements									
Highway Expenditures	147.8	147.4	156.7	203.7	230.0	235.2	256.9	276.9	184.1
Debt Service								26.8	26.7
Total Disbursements	147.8	147.4	156.7	203.7	230.0	235.2	256.9	303.7	210.8
Excess Receipts Over (Under) Disbursements	(17.9)	29.9	27.0	(11.8)	(40.3)	(45.4)	114.8	(87.5)	(12.7)



1987 Four-Lane Highway Program

Receipts and Disbursements (in Millions of Dollars)

FY 2002	FY 2003	FY 2004	FY 2005	FY 2006	FY 2007	FY2008	FY2009	FY2010	FY2011	FY2012	Totals*
75.5	75.4	81.5	78.5	81.3	82.0	80.5	78.5	74.0	77.2	75.7	1732.0
1.1	1.1	1.1	1.1	1.3	1.0	1.0	1.0	0.9	1.0	0.9	27.4
3.7	4.6	6.5	4.3	3.3	3.6	1.9	1.8	0.8	9.1	2.9	89.1
12.7	13.0	13.5	14.5	15.3	15.0	14.8	15.0	15.2	14.9	15.4	309.0
42.0	42.0	42.0	42.0	42.0	42.0	42.0	42.0	42.0	42.0	42.0	838.9
70.9	63.2	53.0	51.5	50.6	82.2	77.2	91.8	102.3	94.8	124.0	1501.0
6.8	6.8	6.8	6.8	6.8	6.8	6.8	6.8	6.8	6.8	6.8	170.1
4.5	2.0	0.9	0.5	1.4	2.3	2.4	0.9	0.5	0.3	0.2	29.9
0.3	1.6	0.1	1.0	-1.0	0.2	0.6	1.4	0.8	0.8	9.5	18.1
											203.9
217.5	209.7	205.4	200.2	201.0	235.1	227.2	239.2	243.3	246.9	277.4	4,919.4
165.4	158.5	173.3	153.5	138.0	166.2	172.9	235.0	220.4	204.2	301.6	4,383.7
22.5	27.0	26.8	26.6	26.3	26.1	25.9	25.7	0.0	0.0	0.0	260.4
187.9	185.5	200.1	180.1	164.3	192.3	198.8	260.7	220.4	204.2	301.6	4,644.1
29.6	24.2	5.3	20.1	36.7	42.8	28.5	(21.5)	22.9	42.7	(24.2)	275.3

* Totals include FY 1988-1992;
not included due to space limitations



Projected vs. Actual Receipts

For Fiscal Years 1988-2012

(in Millions of Dollars)

	<u>Projected</u>	<u>Actual</u>
Fuel Tax/Oil Tax	1,666.8	1,759.4
Contractor's Tax	66.0	89.1
Tag Fees	276.5	309.0
Debt Service Funds	848.6	838.9
Federal Funds	1,159.5	1,501.0
State Matching Funds	167.3	170.1
Other	12.0	48.0
Bond Proceeds	<u>200.0</u>	<u>203.9</u>
Total Receipts	4,396.7	4,919.4

Highway Segments Open to Traffic

as of June 30, 2012

PHASE I

Route	Description	Miles	Cost	County(ies)
1 US 45 from Lauderdale/Clarke Ln to Corinth				
	US 45 between Saltillo & Corinth	38.2	105,545,878.83	Alcorn, Lee, Prentiss
	US 45 between New Wren & Shannon	11.6	41,666,313.16	Lee, Monroe
	US 45 between Columbus Air Force Base & Aberdeen	16.7	52,703,170.88	Lowndes, Monroe
	US 45 between Macon Bypass & Brooksville	12.1	18,017,359.26	Noxubee
	US 45 from South of Clarke Co Line to I-59	12.1	57,732,476.74	Clarke, Lauderdale
2 US 45A from US 82 to Shannon				
	US 45A South of Okolona to Shannon	14.1	48,859,819.31	Chickasaw, Lee, Monroe
	US 45A between US 82 & West Point	7.1	19,064,790.88	Clay, Lowndes
3 US 49W from US 49 to Yazoo River				
	US 49W from Yazoo City to Carter Road	4.7	50,010,434.54	Yazoo
4 US 49W from Inverness to Indianola				
	US 49W between Inverness & Indianola	5.4	10,791,650.43	Sunflower
5 US 61 from Port Gibson to South of Vicksburg				
	US 61 between Port Gibson & Yokena	14.2	35,112,885.19	Claiborne, Warren
6 US 72 from Mt Pleasant to Burnsville				
	US 72 between Stricklin & Burnsville	7.0	11,733,320.68	Alcorn, Tishomingo
	US 72 between Walnut & Corinth	20.1	61,551,254.64	Alcorn, Tippah
	US 72 between Mt Pleasant & SR 5	20.3	52,916,229.59	Benton, Marshall
7 US 78 from Holly Springs to Tremont				
	US 78 between Fulton Bypass & Tremont	9.3	32,982,267.77	Itawamba
	US 78 between Holly Springs & New Albany Bypass	23.7	80,927,176.33	Benton, Marshall, Union
8 US 82 from I-55 to Alabama Line				
	US 82 between SR 12 & Alabama Line	8.4	25,448,632.43	Lowndes
	US 82 from 2 Miles W of Eupora to SR 15	12.1	44,191,580.31	Webster
	US 82 from Winona Bypass to Kilmichael	14.0	41,338,102.21	Montgomery
9 US 84 from I-59 to Jones/Wayne Co Line				
	US 84 between Laurel(I-59) & Jones/Wayne Co Line	10.6	25,784,167.07	Jones, Wayne
10 US 98 from Columbia to Alabama Line				
	US 98 from 1.5 Miles E of US 49 to Alabama Line	60.2	116,234,538.98	Forrest, George, Greene, Perry
	US 98 between Columbia & Marion/Lamar Co Line	7.5	7,640,786.25	Marion

PHASE II

Route	Description	Miles	Cost	County(ies)
1 SR 25 from SR 471 to Starkville				
	SR 25 between SR 471 & SR 43	9.9	9,514,840.41	Rankin
	SR 25 from Winston County Ln to Starkville Bypass	14.7	61,243,577.85	Oktibbeha
2 SR 63 from Jackson/George County Ln to Lucedale				
	SR 63 from Jackson/George County Ln to Lucedale	16.1	40,846,809.61	George
3 SR 302 from I-55 Southaven to US 72 Mt Pleasant				
	SR 302 from I-55 Southaven to Mt Pleasant	30.2	142,327,385.68	DeSoto, Marshall
4 US 45 from Alabama Ln North to US 278				
	US 45 from Aberdeen to US 278	12.7	47,149,655.47	Monroe
	US 45 from Kemper/Lauderdale Cl to Macon	38.1	69,396,145.95	Kemper, Lauderdale, Noxubee
	US 45 from State Line Relocation to Lauderdale Cl	61.4	270,171,733.48	Clarke, Greene, Wayne
5 US 45A from West Point to 4 Mi South of Okolona				
	US 45A from West Point to 4 Mi South of Okolona	21.7	57,144,599.52	Chickasaw, Clay, Monroe

Route	Description	Miles	Cost	County(ies)
6 US 45A from Brooksville to US 82	US 45A from Brooksville to US 82	19.7	81,129,210.85	Lowndes, Noxubee
7 US 49W from Yazoo River to Inverness	US 49W from Yazoo River (Carter Rd) to Inverness	34.3	76,824,623.62	Humphreys, Sunflower, Yazoo
8 US 61 from Louisiana Ln to Tennessee Ln	US 61 from Clarksdale Bypass to Tn State Ln	57.8	151,169,341.45	Coahoma, DeSoto, Tunica
	US 61 from Merigold to Shelby	11.8	31,001,172.09	Bolivar
	US 61 from Washington to Fayette Bypass	12.2	41,643,864.26	Adams, Jefferson
	US 61 from Louisiana State Line to Wilkinson/Adams CL	29.6	92,116,304.20	Adams, Wilkinson
	US 61 from Fayette Bypass to Port Gibson	13.3	52,889,566.74	Claiborne, Jefferson
9 US 72 from SR 5 to Walnut	US 72 between SR 5 & Walnut	16.8	52,225,661.86	Benton, Tippah
10 US 78 from Tremont to Alabama Line	US 78 between Tremont & Alabama Line	4.0	13,378,924.12	Itawamba
11 US 82 from Montgomery/Webster Line to Starkville	US 82 from Montgomery/Webster Ln East to Eupora	6.5	24,220,324.88	Webster
	US 82 from Mathiston to Starkville Bypass	21.5	118,019,828.62	Choctaw, Oktibbeha, Webster
12 US 84 from Leesdale to Waynesboro	US 84 from Jones/Wayne Co Ln to Waynesboro	20.6	46,025,840.13	Wayne
	US 84 from Covington Co Ln to Laurel	14.2	29,860,133.79	Jones
	US 84 between Auburn Road & I-55	5.5	3,956,286.24	Lincoln
	US 84 between Leesdale & Roxie	7.1	6,122,675.52	Franklin
	US 84 from Brookhaven Bypass to Prentiss	32.9	170,806,632.54	Jefferson Davis, Lawrence, Lincoln
13 US 98 from Pike/Walthall Line to W of Hattiesburg	US 98 between Marion/Lamar County Ln & SR 589	10.6	16,008,853.35	Lamar
	US 98 from Bogue Chitto River to Columbia	26.3	64,243,580.89	Marion, Pike, Walthall

PHASE III

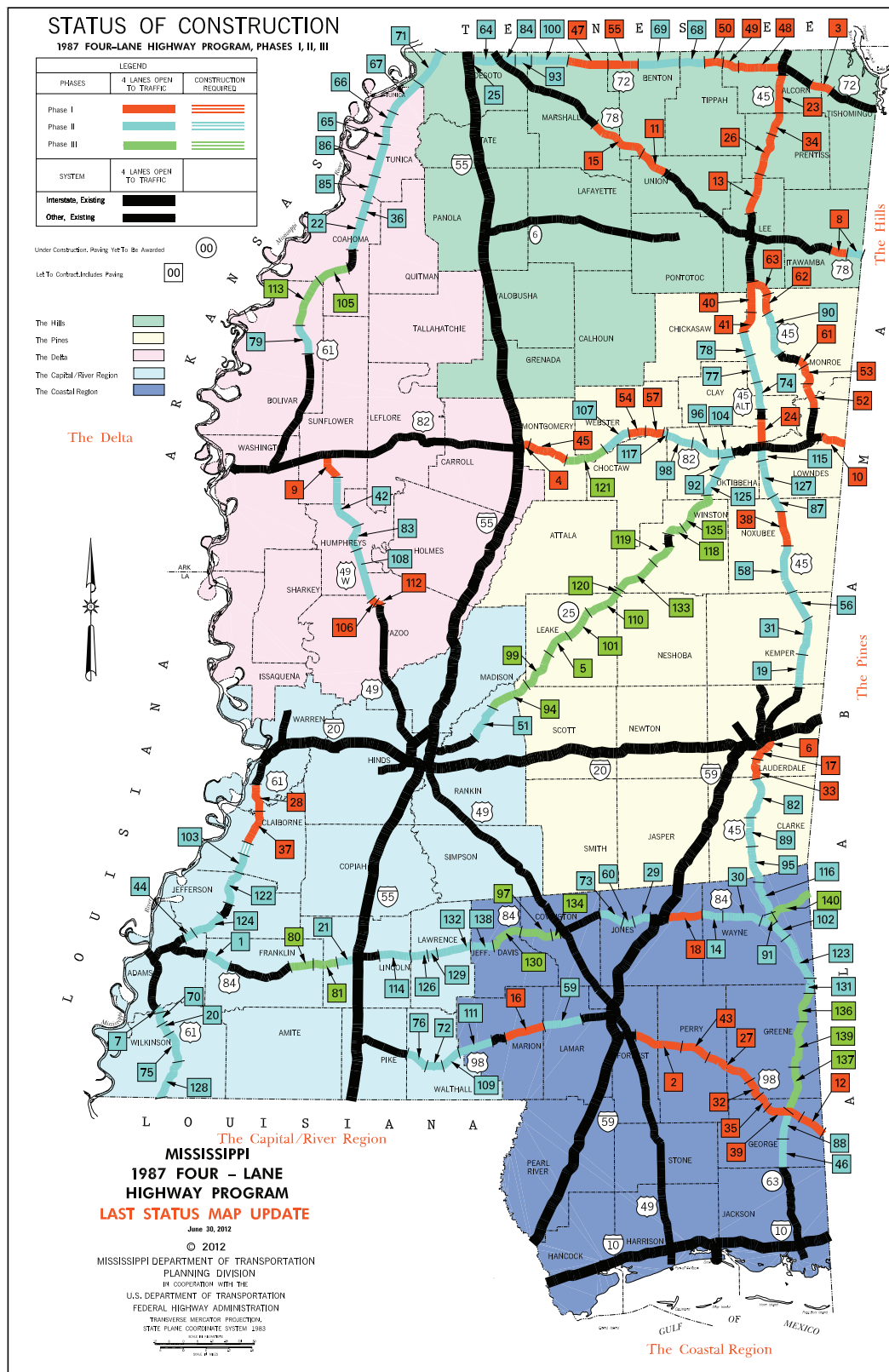
Route	Description	Miles	Cost	County(ies)
1 SR 25 from SR 43 to Winston/Oktibbeha Co Ln	SR 25 from SR 43 to Louisville	74.1	176,640,046.25	Attala, Leake, Rankin, Scott, Winston
	SR 25 from Oktibbeha CI	16.4	62,184,181.45	Winston
2 SR 63 from Lucedale North to US 45 at State Line	SR 57 from Turkey Creek to State Line	8.4	18,118,351.74	Greene, Wayne
	*SR 63 from Lucedale/US 98 to Turkey Creek	24.4	108,419,857.30	George, Greene
3 US 61 from Shelby to US 49	US 61 from Shelby to US 49	20.2	66,441,311.97	Bolivar, Coahoma
4 US 82 from Kilmichael to Montgomery/Webster Co Ln	US 82 from Kilmichael to Webster CI	9.3	37,613,098.32	Montgomery
5 US 84 from Eddiceton to Alabama State Line	US 84 from Eddiceton to Auburn Road	13.0	43,503,762.30	Franklin, Lincoln
	US 84 from Prentiss thru Collins Bypass	20.5	93,400,057.24	Covington, Jefferson Davis
	*US 84 from Waynesboro to Alabama State Line	10.0	61,586,734.54	Wayne

As of June 2012

1075.20 \$3,377,597,809.70

Construction costs may change due to incidental changes after a segment of highway is open to traffic. Slight differences in mileage totals are the result of rounding figures. Highway routes are according to Mississippi Code SEC. 65-3-97.

1987 Four-Lane Highway Program Map: Status of Construction



1987 Four-Lane Highway Program List of Construction Projects

(Map with corresponding key numbers on page 14)

Key	County	Highway	Project Description
1	Franklin	US 84	From Leesdale to Roxie, 7.1 miles. Four lanes open to traffic.
2	Forrest & Perry	US 98	From 1.5 miles east of US 49 to 1.0 mile east of SR 29, 15.4 miles. Four lanes open to traffic.
3	Alcorn & Tishomingo	US 72	From Stricklin to Burnsville, 7.0 miles. Four lanes open to traffic.
4	Montgomery	US 82	The US 82 Winona Bypass, 3.0 miles. Four lanes open to traffic.
5	Leake	SR 25	From SR 16 to SR 35 (the Carthage Bypass), 9.2 miles. Four lanes open to traffic.
6	Lauderdale	US 45	From SR 19 northward to the US 45 Bypass at I-59, 1.3 miles. Four lanes open to traffic.
7	Wilkinson & Adams	US 61	Homochitto River Bridge and approaches, 2.0 miles. Four lanes open to traffic.
8	Itawamba	US 78	From the interchange south of Fulton to the Alabama State Line, 12.8 miles. Four lanes open to traffic.
9	Sunflower	US 49W	From the Inverness Bypass to Indianola, 7.2 miles. Four lanes open to traffic.
10	Lowndes	US 82	From SR 12 to the Alabama State Line, 7.7 miles. Four lanes open to traffic.
11	Benton & Union	US 78	From Hickory Flat to the west end of the New Albany Bypass, 9.1 miles. Four lanes open to traffic.
12	George	US 98	From the Lucedale Bypass to the Alabama State Line, 6.9 miles. Four lanes open to traffic.
13	Lee	US 45	From Saltillo to SR 370, 9.7 miles. Four lanes open to traffic.
14	Wayne	US 84	From the Jones County Line to 3.0 miles east of Whistler, 9.6 miles. Four lanes open to traffic.
15	Marshall & Benton	US 78	From the Holly Springs Bypass to Hickory Flat, 14.6 miles. Four lanes open to traffic.
16	Marion	US 98	From Columbia to the Lamar County Line, 8.2 miles. Four lanes open to traffic.
17	Lauderdale	US 45	From 5.0 miles north of the Clarke County Line to SR 19, 6.1 miles. Four lanes open to traffic.
18	Jones	US 84	From I-59 to the Wayne County Line, 10.6 miles. Four lanes open to traffic.

Key	County	Highway	Project Description
19	Lauderdale & Kemper	US 45	Northbound from 2.0 miles north of Lauderdale to Porterville, 11.1 miles. Four lanes open to traffic.
20	Wilkinson	US 61	Replace bridges at Buffalo River, 1.5 miles. Four lanes open to traffic.
21	Lincoln	US 84	From Auburn Road to I-55, 5.5 miles. Four lanes open to traffic.
22	Coahoma	US 61	From the Clarksdale Bypass northward, 7.0 miles. Four lanes open to traffic.
23	Alcorn	US 45	From the Prentiss County Line to Corinth, 10.3 miles. Four lanes open to traffic.
24	Lowndes & Clay	US 45A	From US 82 north to West Point, 7.1 miles. Four lanes open to traffic.
25	DeSoto	SR 302	From Airways Blvd. to Swinnea Road, 1.1 miles. Four lanes open to traffic.
26	Prentiss	US 45	From SR 370 to SR 4, 12.4 miles. Four lanes open to traffic.
27	Perry & Greene	US 98	From 2.0 miles west of the Perry/Greene County Line to Little Oktibee Creek, 9.2 miles. Four lanes open to traffic.
28	Warren	US 61	From the Big Black River Bridge to the beginning of four lanes at Yokena, 7.0 miles. Four lanes open to traffic.
29	Jones	US 84	From SR 28 to the beginning of four lanes west of Laurel, 1.8 miles. Four lanes open to traffic.
30	Wayne	US 84	From 3.0 miles east of Whistler to the Waynesboro Bypass, 4.2 miles. Four lanes open to traffic.
31	Kemper	US 45	From Porterville to Scooba, northbound, 10.1 miles. Four lanes open to traffic.
32	Greene	US 98	From Little Oktibee Creek to the East Relief Bridge over the Chickasawhay River, 5.8 miles. Four lanes open to traffic.
33	Lauderdale & Clarke	US 45	From 1.0 mile south of the Clarke County Line to the Meridian Bypass, 6.3 miles. Four lanes open to traffic.
34	Prentiss	US 45	From SR 4 to the Alcorn County Line, 6.1 miles. Four lanes open to traffic.
35	Greene & George	US 98	From the East Relief Bridge over the Chickasawhay River to the Lucedale Bypass, 3.4 miles. Four lanes open to traffic.
36	Coahoma	US 61	From 7.0 miles north of Clarksdale to US 49 near Lula, 6.2 miles. Four lanes open to traffic.
37	Claiborne	US 61	From Port Gibson to the Big Black River, 7.8 miles. Also, replaced bridge at Kennison Creek approximately 1.0 mile south of the Big Black River. Four lanes open to traffic.

Key County		Highway	Project Description
38	Noxubee	US 45	From the south end of the Macon Bypass to Brooksville, 12.1 miles. Four lanes open to traffic.
39	George	US 98	The Lucedale Bypass, 9.7 miles. Four lanes open to traffic.
40	Monroe & Lee	US 45A	From south of SR 41 to Shannon, 8.7 miles. Four lanes open to traffic.
41	Chickasaw & Monroe	US 45A	From 4.0 miles south of Okolona to south of SR 41, 5.4 miles. Four lanes open to traffic.
42	Humphreys & Sunflower	US 49W	From SR 12 to Inverness, 15.0 miles. Four lanes open to traffic.
43	Perry	US 98	From 1.0 mile east of SR 29 to 2.0 miles west of the Greene County Line, 9.9 miles. Four lanes open to traffic.
44	Adams	US 61	From 0.3 mile north of the Natchez Trace Parkway to the Jefferson County Line, 2.8 miles. Four lanes open to traffic.
45	Montgomery	US 82	From the Winona Bypass to Kilmichael, 11.0 miles. Four lanes open to traffic.
46	George	SR 63	From the Jackson County Line to the Lucedale Bypass, 7.4 miles. Four lanes open to traffic.
47	Marshall	US 72	From Mount Pleasant eastward to the Benton County Line, 12.0 miles. Four lanes open to traffic.
48	Alcorn	US 72	From Goose Creek Bottom to Corinth, 11.1 miles. Four lanes open to traffic.
49	Alcorn	US 72	From 1.0 mile east of the Tippah County Line to Goose Creek Bottom, 3.8 miles. Four lanes open to traffic.
50	Tippah & Alcorn	US 72	From Walnut to 1.0 mile east of the Alcorn County Line, 5.7 miles. Four lanes open to traffic.
51	Rankin	SR 25	From SR 471 to SR 43, 9.9 miles. Four lanes open to traffic.
52	Lowndes & Monroe	US 45	From Columbus Air Force Base to McKinley Creek, 8.0 miles. Four lanes open to traffic.
53	Monroe	US 45	From McKinley Creek to the interchange at SR 25 and SR 8 near Lackey, 6.1 miles. Four lanes open to traffic.
54	Webster	US 82	From 2.0 miles west of Eupora eastward, 5.8 miles. Four lanes open to traffic.
55	Benton	US 72	From the Marshall County Line to SR 5, 8.3 miles. Four lanes open to traffic.
56	Kemper	US 45	From Scooba to the Noxubee County Line, northbound, 7.3 miles. Four lanes open to traffic.
57	Webster	US 82	From 5.8 miles east of Eupora to one-half mile west of SR 15, 6.4 miles. Four lanes open to traffic.

Key	County	Highway	Project Description
58	Noxubee	US 45	From the Kemper County Line to the Macon Bypass, 9.6 miles. Four lanes open to traffic.
59	Lamar	US 98	From the Marion County Line to SR 589, 10.6 miles. Four lanes open to traffic.
60	Jones	US 84	From SR 29 to SR 28 west of Laurel, 3.5 miles. Four lanes open to traffic.
61	Monroe	US 45	From Lackey to near Aberdeen, 2.7 miles. Four lanes open to traffic.
62	Monroe	US 45	From New Wren to Town Creek, 4.96 miles. Four lanes open to traffic.
63	Monroe & Lee	US 45	From Town Creek to Shannon, 6.614 miles. Four lanes open to traffic.
64	DeSoto	SR 302	From Swinnea Road to US 78, 9.902 miles. Four lanes open to traffic.
65	Tunica	US 61	From SR 4, south of Tunica, to State Aid Road 72, 5.7 miles. Four lanes open to traffic.
66	Tunica	US 61	From State Aid Road 72 to 6.0 miles north of Tunica, 4.3 miles. Four lanes open to traffic.
67	Tunica & DeSoto	US 61	From 6.0 miles north of Tunica to SR 3, 9.2 miles. Four lanes open to traffic.
68	Tippah	US 72	From the Benton County Line to the four-lane section at Walnut, 6.0 miles. Four lanes open to traffic.
69	Benton	US 72	From east of the Wolfe River to the Tippah County Line, 10.0 miles. Four lanes open to traffic.
70	Wilkinson	US 61	From north of the Buffalo River to the Adams County Line, 7.3 miles. Four lanes open to traffic.
71	DeSoto	US 61	From SR 3 to the Tenn. State Line, 9.9 miles. Four lanes open to traffic.
72	Walthall	US 98	The Tylertown Bypass, 5.1 miles. Four lanes open to traffic.
73	Jones	US 84	From the Covington County Line to west of SR 29, 8.9 miles. Four lanes open to traffic.
74	Clay & Monroe	US 45A	From north of West Point to SR 25, 8.2 miles. Four lanes open to traffic.
75	Wilkinson	US 61	From SR 563 to the Buffalo River, 6.7 miles. Four lanes open to traffic.
76	Pike & Walthall	US 98	From the Bogue Chitto River to the west end of the Tylertown Bypass, 6.6 miles. Four lanes open to traffic.
77	Monroe	US 45A	From SR 25 to SR 8, 6.7 miles. Four lanes open to traffic.

Key	County	Highway	Project Description
78	Monroe & Chickasaw	US 45A	From SR 8 to 4.0 miles south of Okolona, 6.8 miles. Four lanes open to traffic.
79	Bolivar	US 61	From Merigold to Shelby, 11.76 miles. Four lanes open to traffic.
80	Franklin	US 84	From Eddiceton to Lucien, 7.4 miles. Four lanes open to traffic.
81	Franklin & Lincoln	US 84	From Lucien to Auburn Road, 5.8 miles. Four lanes open to traffic.
82	Clarke	US 45	From the Clarkco State Park to 1.0 mile south of the Lauderdale County Line, 8.5 miles. Four lanes open to traffic.
83	Humphreys	US 49W	From Silver City to SR 12 West at Belzoni, 6.3 miles. Four lanes open to traffic.
84	DeSoto	SR 302	From US 78 to 1.5 miles east of Hacks Cross Road, 4.9 miles. Four lanes open to traffic.
85	Coahoma & Tunica	US 61	From US 49 near Lula to Dundee, 7.1 miles. Four lanes open to traffic.
86	Tunica	US 61	From Dundee to SR 4, 8.4 miles. Four lanes open to traffic.
87	Noxubee	US 45	From Brooksville to the Lowndes County Line, 4.6 miles. Four lanes open to traffic.
88	George	SR 63	The Lucedale Bypass, 8.7 miles. Four lanes open to traffic.
89	Clarke	US 45	From DeSoto to Clarkco State Park, 11.5 miles. Four lanes open to traffic.
90	Monroe	US 45	From Aberdeen to New Wren, 12.7 miles. Four lanes open to traffic.
91	Wayne	US 45	The Waynesboro Bypass, 6.6 miles. Four lanes open to traffic.
92	Oktibbeha	SR 25	From existing SR 25 south of Starkville to the interchange with relocated US 82 northwest of Starkville, 8.4 miles. Four lanes open to traffic.
93	DeSoto & Marshall	SR 302	From 1.5 miles east of Hacks Cross Road to 1.0 mile west of SR 309, 4.4 miles. Four lanes open to traffic.
94	Rankin, Scott & Leake	SR 25	From SR 43 to Ludlow, 11.4 miles. Four lanes open to traffic.
95	Wayne & Clarke	US 45	From Hiwanee to DeSoto (Shubuta Bypass), 10.0 miles. Four lanes open to traffic.
96	Oktibbeha	US 82	From 2.7 miles west of Adaton to the interchange with relocated SR 25 northwest of Starkville, 7.7 miles. Four lanes open to traffic.
97	Covington/Jefferson Davis	US 84	From the Jefferson Davis County Line to Collins, 12.5 miles. Grading completed on two lanes. Four lanes open to traffic.

Key	County	Highway	Project Description
98	Oktibbeha	US 82	From the Choctaw County Line to 2.7 miles west of Adaton, 7.32 miles. Grade, drain and bridge. Four lanes open to traffic.
99	Leake	SR 25	From Ludlow to SR 16, 9.6 miles. Four lanes open to traffic.
100	Marshall	SR 302	From 1.0 mile west of SR 309 to Mt. Pleasant, 9.939 miles. Grade, drain and bridge four lanes on new location. Four lanes open to traffic.
101	Leake	SR 25	From SR 35 to Renfro, 7.3 miles. Four lanes open to traffic.
102	Wayne	US 45	A. From the North Waynesboro Bypass, 2.2 miles. Grade, drain and bridge four lanes on new location. Awarded 7/1996. B. From Winchester to US 84 (South Waynesboro Bypass) 5.9 miles. Grade, drain and bridge four lanes on new location. Four lanes open to traffic.
103	Claiborne	US 61	From the Jefferson County Line to 1.0 mile south of the Natchez Trace south of Port Gibson, 3.636 miles. Grade, drain and bridge two lanes parallel to existing US 61. Four lanes open to traffic.
104	Oktibbeha	US 82	From relocated SR 25 to Clayton Village (Starkville Bypass), 4.894 miles. Four lanes open to traffic.
105	Coahoma	US 61	From the Bolivar County Line to US 49 (bypass near Clarksdale), 9.53 miles. Four lanes open to traffic.
106	Yazoo	US 49W	From the US 49W and SR 3 interchange to Carter Road, 2.86 miles. Four lanes open to traffic.
107	Webster	US 82	From the Montgomery County Line to Eupora Bypass, 6.534 miles. Four lanes open to traffic.
108	Yazoo & Humphreys	US 49W	From Carter Road to Silver City, 13.0 miles. Four lanes open to traffic.
109	Walthall	US 98	From the east end of the Tylertown Bypass to the Marion County Line, 5.05 miles. Four lanes open to traffic.
110	Leake	SR 25	From Renfro to the Attala County Line, 9.6 miles. Four lanes open to traffic.
111	Marion	US 98	From the Walthall County Line to Foxworth, 9.5 miles. Four lanes open to traffic.
112	Yazoo	US 49W	From Yazoo City to SR 3, 1.8 miles. Grade, drain, bridge, and pave four lanes on new location. Four lanes open to traffic.
113	Bolivar	US 61	From Shelby to Coahoma County Line, 10.7 miles. Four lanes open to traffic.
114	Lincoln	US 84	From the Brookhaven Bypass to the Lawrence County Line, 7.3 miles. Four lanes open to traffic.

Key County	Highway	Project Description
115 Lowndes	US 45A	From Artesia Road to US 82 near Mayhew, 5.7 miles. Four lanes open to traffic.
116 Wayne	US 45	From the Waynesboro Bypass to Hiwanee, 6.7 miles. Four lanes open to traffic.
117 Webster & Choctaw	US 82	From 0.5 mile west of SR 15 to Oktibbeha County Line, 1.62 miles. Grade, drain, bridge, and pave four lanes on new location. Four lanes open to traffic.
118 Winston	SR 25	From SR 15 to Old SR 25 north of Louisville, 6.2 miles. Grade, drain, bridge, and pave two lanes parallel to existing lanes. Four lanes open to traffic.
119 Winston	SR 25	From Noxapater Creek to Louisville Relocation, 5.9 miles. Four lanes open to traffic.
120 Attala & Winston	SR 25	From the Leake County Line to SR 19, 2.0 miles. Grade, drain, bridge and pave four lanes parallel to existing lanes. Four lanes open to traffic.
121 Montgomery	US 82	From Kilmichael to the Webster County Line, 9.3 miles. Grade, drain and bridge two lanes. Four lanes open to traffic.
122 Jefferson	US 61	From the Fayette Bypass to 0.077 mile north of the Claiborne County Line, 9.7 miles. Grade, drain and bridge two lanes. Four lanes open to traffic.
123 Wayne	US 45	From SR 42 at State Line to Winchester 13.1 miles. Grade, drain and bridge two additional lanes. Four lanes open to traffic.
124 Jefferson	US 61	From the Adams County Line to south of Fayette, 9.4 miles. Grade, drain, bridge and pave. Four lanes open to traffic.
125 Oktibbeha	SR 25	From the Winston County Line to the Starkville Bypass, 6.25 miles. Grade, drain, bridge and pave. Four lanes open to traffic.
126 Lawrence	US 84	From Lincoln County Line to Old SR 27, 7.9 miles. Grade, drain and bridge two lanes. Four lanes open to traffic.
127 Lowndes	US 45A	From Noxubee County Line to Artesia Road, 9.4 miles. Grade, drain and bridge two lanes. Four lanes open to traffic.
128 Wilkinson	US 61	From Louisiana State Line to SR 563, 10.8 miles. Four lanes open to traffic.
129 Lawrence	US 84	From Old SR 27 to the east end of the Monticello Bypass, 4.0 miles. Grade, drain, bridge and pave four lanes. Four lanes open to traffic.
130 Jefferson Davis	US 84	Between Prentiss and the Covington County Line, 5.0 miles. Grade, drain and bridge two lanes. Four lanes open to traffic.

Key County	Highway	Project Description
131 Wayne & Green	US 45	Stateline relocation (US 45, SR 57 and SR 42), 3.313 miles. Grade, drain, bridge and pave four lanes parallel and new location. Four lanes open to traffic.
132 Lawrence	US 84	From the east end of the Monticello Bypass to the Jefferson Davis County line, 4.8 miles. Grade, drain, bridge and pave four lanes. Four lanes open to traffic.
133 Winston	SR 25	From SR 19 to Noxapater Creek, 18.596 miles. Grade, drain, bridge and pave two lanes parallel and reconstruction of existing lanes. Four lanes open to traffic.
134 Covington	US 84	Collins By-pass from 1.9 miles west of US 49 to 0.5 mile east of US 49, 3.0 miles. Grade, drain and bridge four lanes new location. Four lanes open to traffic.
135 Winston	SR 25	From the Louisville relocation (old SR 25) to the Oktibbeha County line, 10.24 miles. Grade, drain, bridge and pave two lanes parallel and reconstruction of existing lanes. Four lanes open to traffic.
136 Greene	SR 57	From Turkey Creek to Stateline, 8.4 miles. Grade, drain and pave two lanes parallel to existing SR 57. Four lanes open to traffic.
137 Greene & George	SR 63	From Lucedale (US 98) to Leakesville, 14.4 miles. Grade, drain and bridge four lanes on new location. Four lanes open to traffic.
138 Jefferson Davis	US 84	From the Lawrence County Line to Prentiss, 8.948 miles. Grade, drain and bridge two lanes. Four lanes open to traffic.
139 Greene	SR 57	From Leakesville to Turkey Creek, 10 miles. Grade and drain two lanes. Four lanes open to traffic.
140 Wayne	US 84	From Waynesboro to the Alabama state line, 10 miles. Grade, drain and bridge two lanes. Four lanes open to traffic.

1987 Four-Lane Highway Program Right of Way* Activity Underway

All active Right of Way projects under the 1987 Four-lane Program are completed.

1987 Four-Lane Highway Program Right of Way Not Acquired

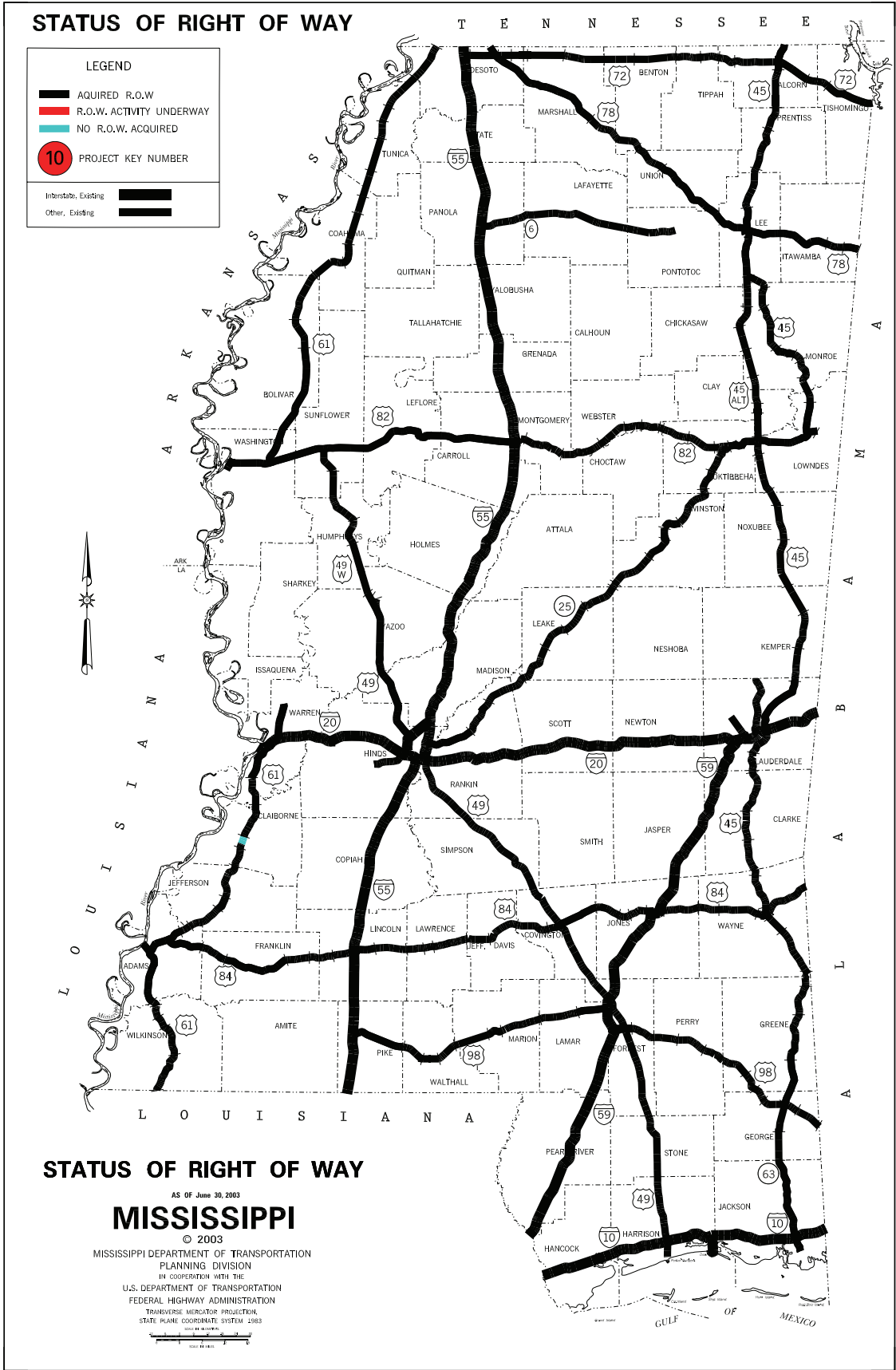
(Corresponds with map on facing page)

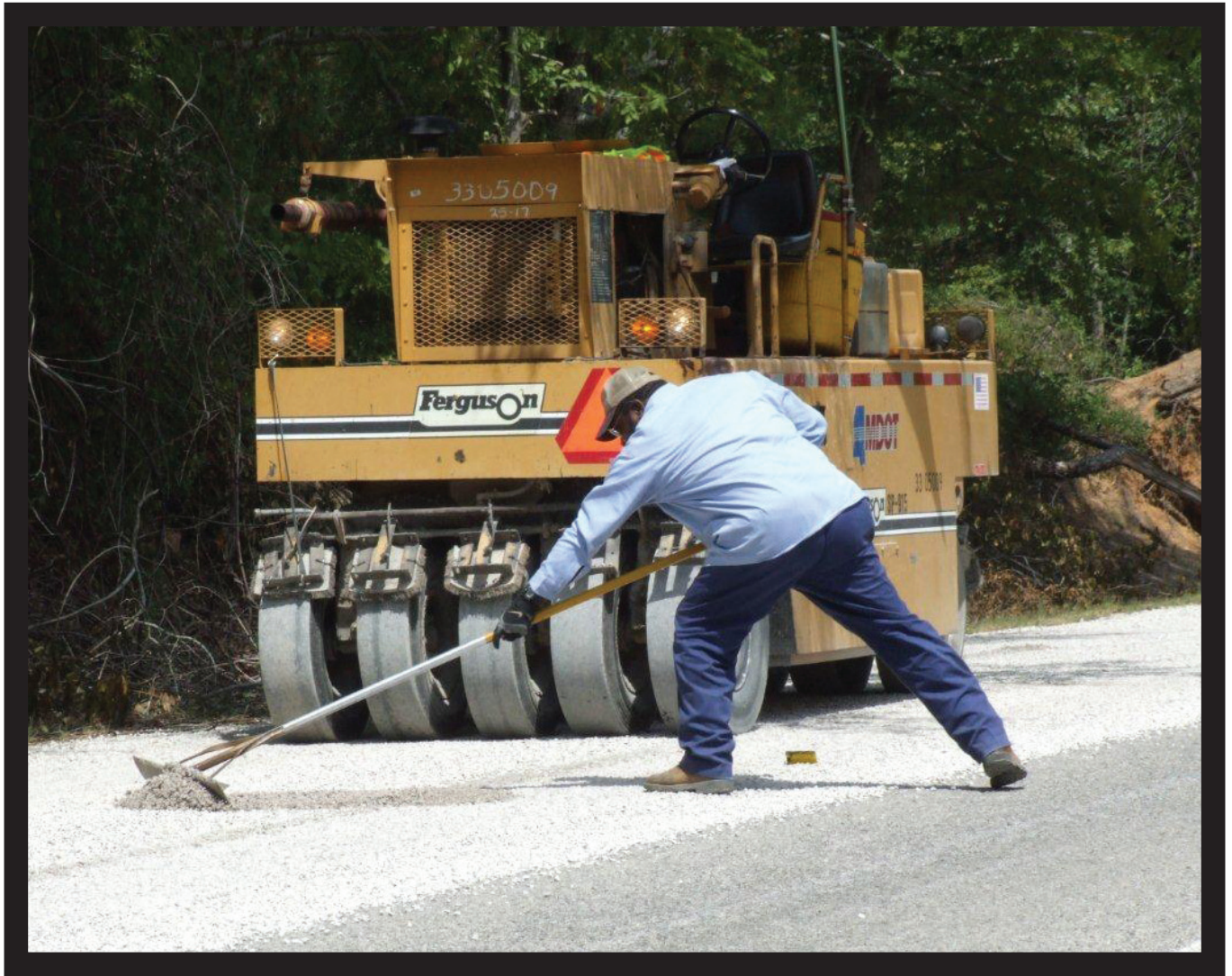
- * US 61 From 1.0 mile south of the Natchez Trace Parkway to the north city limits of Port Gibson; Claiborne County

**Right of Way includes all activities relating to the acquisition of property required to build a highway, such as right of way engineering, title search, appraisal, relocation assistance, utility adjustment and negotiation.*

Map: Status of Right of Way

1987 Four-Lane Highway Program





Vision 21 Program

On April 15, 2002, the Vision 21 bill was signed by Governor Ronnie Musgrove. Vision 21 is a \$3.6 billion “pay-as-you-go” highway proposal to upgrade existing highways, or build new highways where they are needed—most with no new taxes from the public. The legislation reauthorized funding for the four-lane highway construction program at a level that gradually increased to \$200 million a year by fiscal year 2006.

Vision 21 provides for the completion of Phases I, II and III of the 1987 Four-Lane Highway Program; prioritization of Phase IV of the Program and the Gaming Roads Program on a “needs” basis; and special projects that are contingent upon federal or other funding sources, such as the proposed Interstate Highway 69 project, among others.

The legislation also allows MDOT the flexibility to maximize the use of federal funding by allowing the substitution of federal funds for state funds on gaming and maintenance projects.



Vision 21 Activity for Fiscal Year 2012

Design Engineering Activity Underway

<u>Route</u>	<u>Termini</u>	<u>County</u>
State Route 57	From I-10 to Vancleave	Jackson
State Route 15	From State Route 41 to State Route 336	Pontotoc
State Route 6	From I-55 East for 3.11 miles	Pontotoc

Right of Way Activity Underway

<u>Route</u>	<u>Termini</u>	<u>County</u>
State Route 15	From APD Corridor V to Union County Line	Pontotoc
Highway 72	From 302 to Tennessee State Line	Marshall
State Route 15	Pontotoc County Line to Kings Creek South of New Albany	Union
Highway 45E	From Sidon to US Highway 82	Leflore
State Route 57	From Humphrey Road to Vancleave	Jackson
State Route 57	From I-10 to Humphrey Road	Jackson
Interstate 55	From Church Road to State Route 302	Desoto

Construction Activity Underway

<u>Route</u>	<u>Termini</u>	<u>County</u>
State Route 25	From 2.5 miles South of Becker to US 278	Monroe
State Route 8	From Bolivar County Line to Ruleville	Sunflower
Highway 80	Between Brandon and Scott County Line	Rankin
State Route 305	From State Route 4 to the Desoto County Line	Tate
State Route 67/15	At Sangani Boulevard	Harrison
State Route 8	Between Calhoun City and Derma	Calhoun



Gaming Highway Program

Receipts and Disbursements
(in millions of dollars)

FISCAL YEARS	2000	2001	2002	2003	2004	2005	2006	2007	2008	2009	2010	2011	2012	Total**
Receipts														
Gaming Tax*	36.0	36.0	36.0	36.0	36.0		36.0	36.0	36.0	36.0	36.0	36.0	36.0	574.8
Bond/Note Proceeds		100.0	100.0											325.0
Interlocal Proceeds						1.0	38.2	26.7	9.2	43.5	31.0	5.8	15.9	171.2
Federal Funds				36.4	19.5	17.2	14.2	17.2	0.8	4.2	16.9	2.7	3.8	132.9
Fuel Tax				18.2	39.2	36.4								93.8
Other	0.3	0.2	0.4	0.6	0.1	1.9	1.6	0.5	0.5	0.4	0.5	1.7	0.1	11.1
Interest Income/Premium	6.5	3.9	20.3	1.6	1.3	0.1	0.1	0.0						40.6
Total Receipts	42.8	140.1	156.7	92.8	96.1	56.6	90.1	80.4	46.5	84.1	84.4	46.2	55.8	1,349.4
Disbursements														
Highway Disbursements	76.7	79.4	65.5	72.6	64.8	38.1	66.7	42.8	10.3	16.9	70.5	27.1	65.5	888.1
Transfer Contingency Fund						69.0								69.0
Debt Service	10.2	12.4	17.5	29.1	42.6	36.4	35.9	26.5	11.5	34.2	34.4	34.0	25.1	360.0
Total Disbursements	86.9	91.8	83.0	101.7	176.4	74.5	102.6	69.3	21.8	51.2	104.9	61.1	90.6	1,317.0
Excess Receipts Over (Under)														
Disbursements	(44.1)	48.3	73.7	(8.9)	(80.3)	(17.9)	(12.5)	11.1	24.7	32.9	(20.5)	(14.9)	(34.8)	32.4

***Additional Gaming Program receipts directed to Maintenance Program per Section 75-76-129:**

FY 1998	3.2
FY 1999	9.7
FY 2000	15.1
FY 2001	16.2
FY 2002	17.3
FY 2003	17.8
FY 2004	18.2

Note: Since 2005, Gaming funds previously designated for the Maintenance Programs have deposited into the State's General Fund.

** Totals include FY 1995-1999;
not included due to space limitations





MISSISSIPPI DEPARTMENT OF TRANSPORTATION

P. O. Box 1850

Jackson, Mississippi 39215-1850

Mississippi Moving A.H.E.A.D. **FY 2012**

Vision 21

including 1987 Four-Lane Highway Program