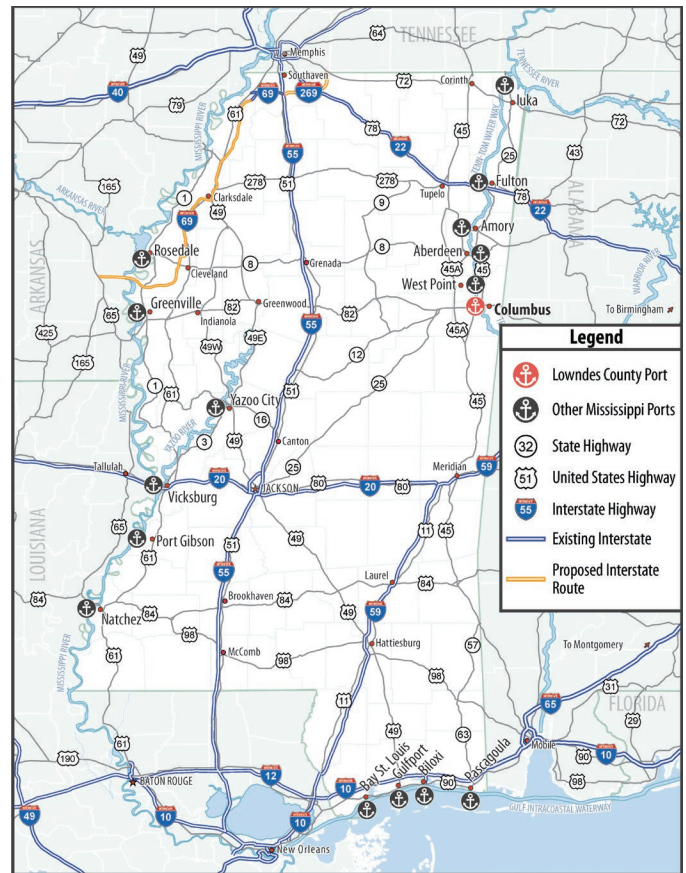


Lowndes County Port

A growing multimodal transportation hub
in Mississippi's Golden Triangle



Location

City: Columbus, MS
County: Lowndes
River: Tennessee-Tombigbee MM 330.0

Connectivity

Road: US 82 (east-west, 4-lane) two miles; US 45 (north-south, 4-lane) two miles
Rail: Onsite Class 1 connections to CPKC, CAGY, AGR, GTRA, and LXVR

Facilities

General cargo dock; Bulk dock with loading conveyor; Barge dock; Barge fleet; Warehouse space, enclosed; Open storage or staging (hard & soft surface); Rail car storage area; Bulk storage or transfer; Liquid storage or transfer; Transload dock; RORO Ramp; Mobile crane; Overhead bridge crane; Truck scales; Material handling forklifts, track-mobile, front-end loaders

Typical Cargoes

Sand & gravel; chemicals; primary non-metal products; lumber & Wood; non-ferrous ores & scrap; primary metal products; coal & coke; iron & steel coils; aluminum

Services

Containerized, dry/liquid/break bulk, & palletized load handling & transfer; General cargo handling & transfer; Barge loading & handling; Foreign trade handling; Barge towing or handling; Truck handling, storage, or transload; Rail-served handling, storage, or transload

Available Land

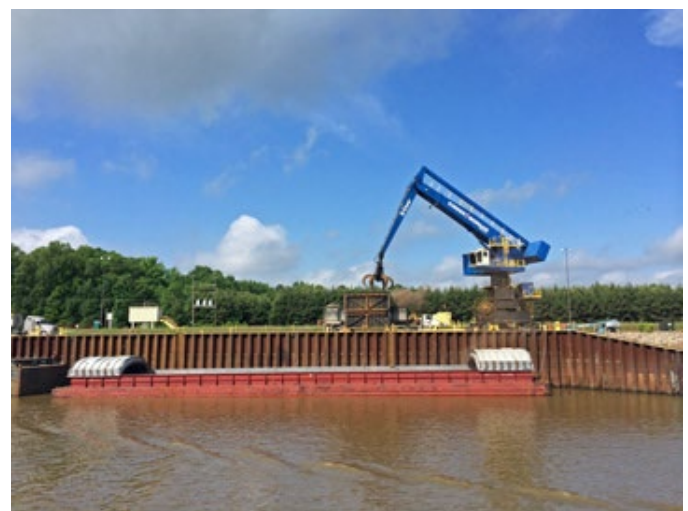
80-acre sites available for development

Learn More About Us

lowndescountyport.org

Contact Us

Port Director: Will Sanders
Phone: 662-329-5886
Email: lcportwls@gmail.com
Address: PO Box 663
Columbus, MS 39703



2025