

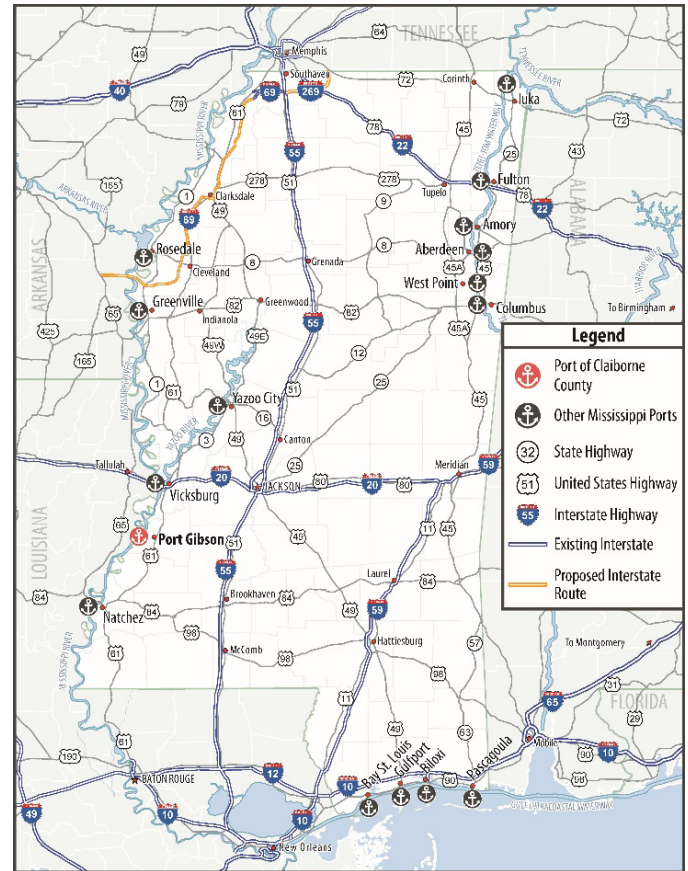
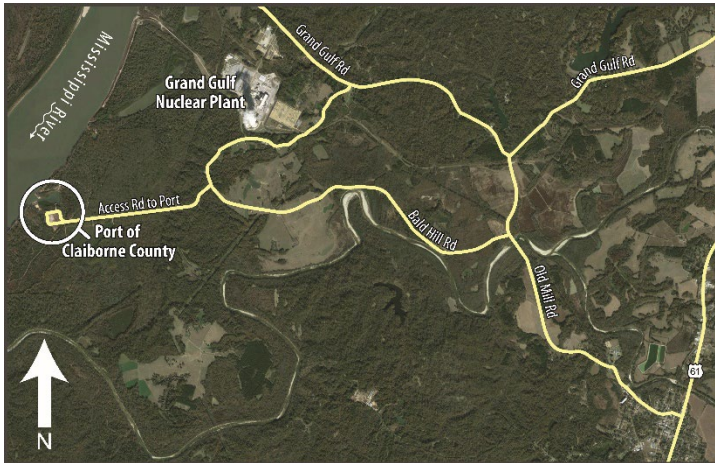
# Port of Claiborne County

On the Mississippi River  
between Natchez and Vicksburg

Access to Grand Gulf Nuclear Power Plant

300 million metric tons of timber in Mississippi  
within a 60-mile radius

County 6<sup>th</sup> highest poultry producer in the state



## Learn More About Us

[claiborneworks.com](http://claiborneworks.com)

## Contact Us

Port Director: Kenneth Ross  
Phone: 601-437-5216  
Email: [kennethross@claibornems.gov](mailto:kennethross@claibornems.gov)  
Address: PO Box 689  
Port Gibson, MS 39150

## Location

City: Port Gibson, MS  
County: Claiborne  
River: Mississippi 404.8

## Connectivity

Road: Access to four-lane North & South US 61; six miles East via Grand Gulf Road and MS 462; I-20 at Vicksburg; 32 miles North  
Rail: Class 1 rail; 32 miles north at Vicksburg

## Facilities

Concrete general cargo dock on a slack water harbor; public boat ramps

## Available Land

Industrial property and buildings available on Highway 61 and on Old Route 2 near Grand Gulf

